

Owner's Manual

CRAFTSMAN[®]

21" Mulching/Side-Discharge PUSH LAWN MOWER

Model No.
247.370320



CAUTION: Before using this product, read this manual and follow all Safety Rules and Operating Instructions.

Sears, Roebuck and Co., Hoffman Estates, IL 60179, U.S.A.

SAFETY

ASSEMBLY

OPERATION

MAINTENANCE

ADJUSTMENTS

STORAGE

PARTS LIST

TABLE OF CONTENTS

Content	Page	Content	Page
Warranty Information	2	Maintenance	12
Safe Operation Practices	3	Service & Adjustment	15
Slope Gauge	6	Storage	17
Assembly	7	Trouble-Shooting	19
Operation	9	Parts List	20

WARRANTY INFORMATION

Two-Year Warranty on Craftsman Lawn Mower

For two years from the date of purchase, when this Craftsman lawn mower is maintained, lubricated, and tuned up according to the instructions in the owner's manual, Sears will repair, free of charge, any defects in material or workmanship. If this lawn mower is used for commercial or rental purposes, this warranty applies for only 90 days from the date of purchase.

This warranty does not cover:

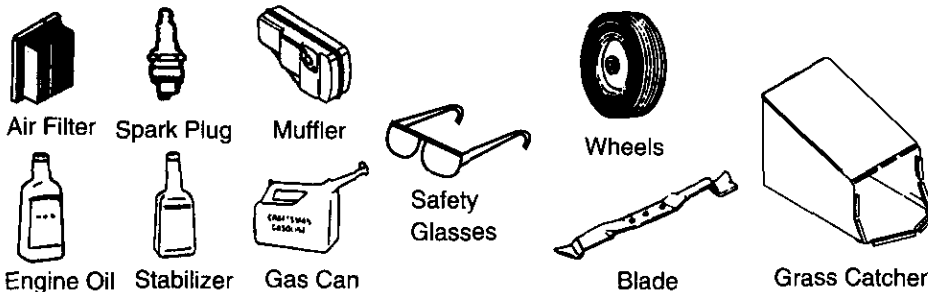
1. Expendable items which become worn during normal use, such as rotary mower blades, blade adapters, belts, air cleaners and spark plug.
2. Repairs necessary because of operator abuse or negligence, including bent crankshafts and the failure to maintain equipment according to the instructions contained in the owner's manual.

WARRANTY SERVICE IS AVAILABLE BY RETURNING THE CRAFTSMAN LAWN MOWER TO THE NEAREST SEARS SERVICE CENTER IN THE UNITED STATES. THIS WARRANTY APPLIES ONLY WHILE THIS PRODUCT IS IN USE IN THE UNITED STATES.

This warranty gives you specific legal rights, and you may also have other rights which vary from state to state. Sears, Roebuck and Co., D/817WA, Hoffman Estates, IL 60179

ACCESSORIES

These accessories were available when the lawn mower was purchased. They are also available at most Sears retail outlets, and service centers. Most Sears stores can order repair parts for you when you provide the model number of your lawn mower.



PRODUCT SPECIFICATIONS	
Horsepower:	5.5 H.P.
Engine Oil	27 oz. SAE 30 oil
Fuel Capacity:	1.5 quarts
Spark Plug	J19LM Gap .030 inches

Please record model number, serial number, and date of purchase here for future reference. You will find this information on the model plate located on the cutting deck of your mower.

Model Number

Serial Number.....

Date of Purchase

SAFE OPERATION PRACTICES



This symbol points out important safety instructions which, if not followed, could endanger the personal safety and/or property of yourself and others. Read and follow all instructions in this manual before attempting to operate your lawn mower. Failure to comply with these instructions may result in personal injury. When you see this symbol—**heed its warning.**



DANGER:

Your lawn mower was built to be operated **according to the rules for safe operation in this manual.** As with any type of power equipment, carelessness or error on the part of the operator can result in serious injury. **If you violate any of these rules, you may cause serious injury to yourself or others.**



This unit is equipped with an internal combustion engine and should not be used on or near any unimproved forest-covered, brush-covered or grass-covered land unless the engine's exhaust system is equipped with a spark arrester meeting applicable local or state laws (if any). If a spark arrester is used, it should be maintained in effective working order by the operator.

In the State of California the above is required by law (Section 4442 of the California Public Resources Code). Other states may have similar laws. Federal laws apply on federal lands. A spark arrester for the muffler is available through your nearest Sears Authorized Service Center (See the REPAIR PARTS section of this manual.)



WARNING: The engine exhaust from this product contains chemicals known to the State of California to cause cancer, birth defects or other reproductive harm.

GENERAL OPERATION

- Read this owner's guide carefully in its entirety before attempting to assemble this machine. Read, understand, and follow all instructions on the machine and in the manual(s) before operation. Be completely familiar with the controls and the proper use of this machine before operating it. Keep this manual in a safe place for future and regular reference, and for ordering replacement parts.
- Your rotary mower is a precision piece of power equipment, not a plaything. Therefore, exercise extreme caution at all times. Your unit has been designed to perform one job: to mow grass. Do not use it for any other purpose.
- Never allow children under 14 years old to operate a power mower. Children 14 years old and over should only operate mower under close parental supervision. Only responsible individuals who are familiar with these rules of safe operation should be allowed to use your mower.
- Keep the area of operation clear of all persons, particularly small children and pets. Stop engine when they are in the vicinity of your mower to help prevent blade contact or thrown object injury. Although the area of operation should be completely cleared of foreign objects, an object may have been overlooked and could be accidentally thrown by the mower in any direction and cause serious personal injury to the operator or any others allowed in the area.
- Thoroughly inspect the area where the equipment is to be used. Remove all stones, sticks, wire, bones, toys and other foreign objects which could be picked up and thrown by the mower in any direction and cause serious personal injury to the operator or any others allowed in the area. Plan your mowing pattern to avoid discharge of material toward roads, sidewalks, bystanders and the like. To help avoid a thrown object's injury, keep children, bystanders and helpers at least 75 feet from the mower while it is in operation.
- Always wear safety glasses or safety goggles during operation or while performing an adjustment or repair, to protect eyes from foreign objects that may be thrown from the machine in any direction.
- Wear sturdy, rough-soled work shoes and close-fitting slacks and shirts. Shirts and pants that cover the arms and legs and steel-toed shoes are recommended. Do not wear loose fitting clothes or jewelry. They can be caught in moving parts. Never operate a unit in bare feet, sandals, slippery or light weight (e.g. canvas) shoes.
- Do not put hands or feet near or under rotating parts. Keep clear of discharge opening at all times as the rotating blade can cause injury.
- Many injuries occur as a result of the mower being pulled over the foot during a fall. Do not hang on to the mower if you are falling; release the handle immediately.
- Never pull the mower toward you while you are

walking. If you must back the mower away from a wall or obstruction first look down and behind, and then follow these steps:

- a. Step back from the mower to fully extend your arms.
 - b. Be sure you are well balanced with sure footing.
 - c. Pull the mower back slowly, no more than half way toward you.
 - d. Repeat these steps as needed.
- Do not operate the mower while under the influence of alcohol or drugs.
 - Do not engage the self-propelled mechanism on units so equipped while starting engine.
 - The blade control handle is a safety device. Never attempt to bypass its operation. Doing so makes the safety device inoperative and may result in personal injury through contact with the rotating blade. The blade control handle must operate easily in both directions and automatically return to the disengaged position when released.
 - Never operate the mower in wet grass. Always be sure of your footing. A slip and fall can cause serious personal injury. Keep a firm hold on the handle and walk, never run. If you feel you are losing your footing, **RELEASE THE BLADE CONTROL HANDLE IMMEDIATELY** and the blade will stop rotating within three seconds.
 - Mow only in daylight or good artificial light.
 - Stop the blade when crossing gravel drives, walks or roads.
 - If the equipment should start to vibrate abnormally, stop the engine and check immediately for the cause. Vibration is generally a warning of trouble.
 - Shut the engine off and wait until the blade comes to a complete stop before removing the grass catcher or unclogging the chute. The cutting blade continues to rotate for a few seconds after the engine is shut off. Never place any part of the body in the blade area until you are sure the blade has stopped rotating.
 - Never operate mower without proper guards, grass catcher, plates or other safety protective devices in place.
 - Muffler and engine become hot and can cause a burn. Do not touch.
 - Only use accessories approved for this machine by the manufacturer. Read, understand, and follow all instructions provided with the approved accessory.
 - If situations occur which are not covered in this manual, use care and good judgment. Contact your dealer for assistance.

SLOPE OPERATION

For your safety, use the slope gauge included as part of this manual to measure slopes before operating this unit on

a slope or hilly area. If the slope is greater than 15 degrees as shown on the slope gauge (page 6), do not operate this unit on that area or serious injury could result.

DO:

- Mow across the face of slopes; never up and down. Exercise extreme caution when changing direction on slopes.
- Watch for holes, ruts, hidden objects, or bumps. Tall grass can hide obstacles.
- Always be sure of your footing. A slip and fall can cause serious personal injury. If you feel you are losing your balance release the blade control handle immediately and the blade will stop in less than 3 seconds.
- **ON MODELS WITH CASTER WHEELS:** Lock both front wheels so they do not pivot while mowing on the face of slopes. To turn the mower, depress the handle and raise the front wheels slightly.

DO NOT:

- Do not mow near drop-offs, ditches or embankments. The operator could lose footing or balance.
- Do not mow slopes greater than 15 degrees as shown on the slope gauge.
- Do not mow on wet grass. Reduced footing could cause slipping.
- **ON MOWERS WITH CASTER WHEELS:** Do Not mow on slopes with casters unlocked since the mower has a tendency to drift down hill.

CHILDREN

Tragic accidents can occur if the operator is not alert to the presence of children. Children are often attracted to the mower and the mowing activity. Never assume that children will remain where you last saw them.

- Keep children out of the mowing area and under the watchful care of a responsible adult other than the operator.
- Be alert and turn mower off if a child enters the area.
- Before and while moving backwards, look behind and down for small children or other objects.
- Never allow children under age 14 to operate the mower. Children 14 years of age and above should read and understand the operation instructions and safety rules in this manual.
- Use extreme care when approaching blind corners, shrubs, trees, or other objects that may obscure your vision of a child or hazard.

SERVICE

- Use extreme care in handling gasoline and other fuels. They are extremely flammable and the vapors are explosive.

- Use only an approved gasoline container.
- Never remove gas cap or add fuel while the engine is running. Allow engine to cool at least two minutes before refueling.
- Replace gasoline cap securely and wipe off any spilled gasoline before starting the engine as it may cause a fire or explosion.
- Extinguish all cigarettes, cigars, pipes and other sources of ignition.
- Never refuel machine indoors because flammable vapors will accumulate in the area.
- Never store the machine or fuel container inside where there is an open flame or spark such as a gas water heater, space heater, or furnace.
- Never run an engine inside a closed area.
- To reduce fire hazard, keep mower free of grass, leaves, or other debris build-up. Clean up oil or fuel spillage. Allow mower to cool at least 5 minutes before storing.
- Before cleaning, repairing, or inspecting, make certain the blade and all moving parts have stopped. Disconnect the spark plug wire, and keep the wire away from the spark plug to prevent accidental starting.
- Check the blade and engine mounting bolts at frequent intervals for proper tightness. Also, visually inspect blade for damage (e.g., bent, cracked or worn). Replace with blade which meets original equipment specifications listed in this manual.
- Keep all nuts, bolts, and screws tight to be sure the equipment is in safe working condition.
- Never tamper with safety devices. Check their proper operation regularly.
- After striking a foreign object, stop the engine, remove the wire from the spark plug, and thoroughly inspect the mower for any damage. Repair the damage before starting and operating the mower.
- Never attempt to make a wheel or cutting height adjustment while the engine is running.
- Grass catcher components are subject to wear, damage and deterioration, which could expose moving parts or allow objects to be thrown. For safety protection, frequently check components and replace with manufacturer's recommended parts, when necessary.
- Mower blades are sharp and can cut. Wrap the blade(s) or wear gloves, and use extra caution when servicing them.
- Do not change the engine governor setting or overspeed the engine. Excessive engine speeds are dangerous.

YOUR RESPONSIBILITY



Restrict the use of this power machine to persons who read, understand and follow the warnings and instructions in this manual and on the machine.

Following are representations of the safety labels on your lawn mower. Maintain safety while operating the mower. Please have the part number ready when re-ordering safety labels.



Part no. 777-1584

SAVE THESE INSTRUCTIONS FOR FUTURE REFERENCE.



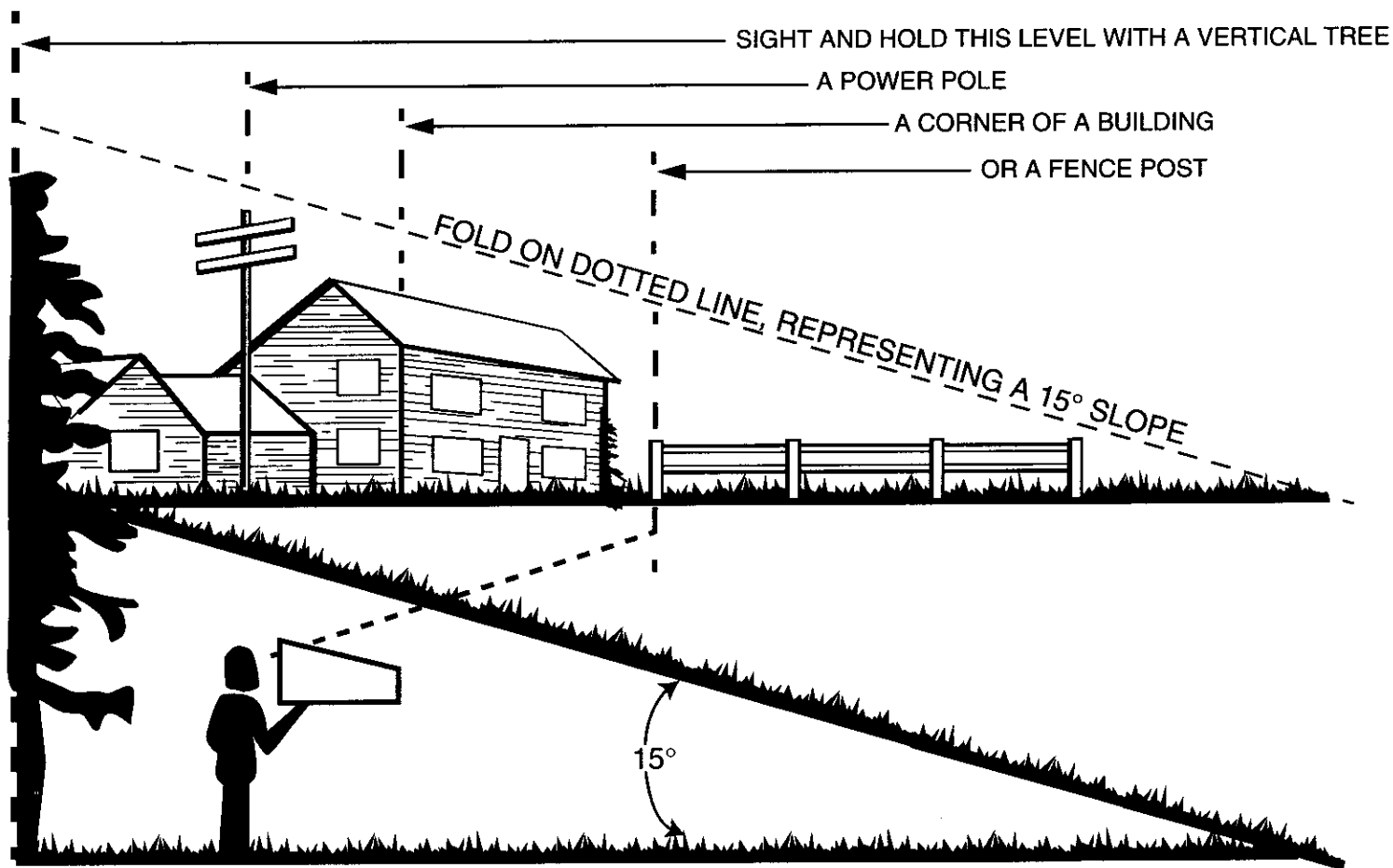
Part no. 777-5270



Part no. 777-1595C

SLOPE GAUGE

USE THIS PAGE AS A GUIDE TO DETERMINE SLOPES WHERE YOU MAY NOT OPERATE SAFELY:



WARNING

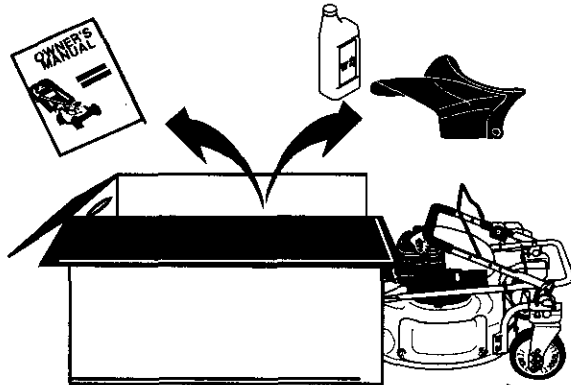
Do not mow on inclines with a slope in excess of 15 degrees (a rise of approximately 2-1/2 feet every 10 feet). A riding mower could overturn and cause serious injury. If operating a walk-behind mower on such a slope, it is extremely difficult to maintain your footing and you could slip, resulting in serious injury. Operate RIDING mowers up and down slopes, never across the face of slopes. Operate WALK-BEHIND mowers across the face of slopes, never up and down slopes.

ASSEMBLY

REMOVING UNIT FROM CARTON

- Remove staples, break glue on top flaps, or cut tape at carton end and peel along top flap to open carton.
- Remove loose parts if included with unit (i.e., owner's manual, etc.). See Figure 1.

1. Remove manual & loose parts



2. Roll unit out

Figure 1

- Cut along dotted lines and lay carton down flat.
- Remove packing material.
- Roll or slide unit out of carton. Check carton thoroughly for loose parts. See Figure 1.

Note: Make sure not to crimp the cables while removing the loose parts or the entire unit from the carton.

IMPORTANT: This unit is shipped **without gasoline or oil in the engine.** Be certain to service engine with gasoline and oil before operating your mower.

NOTE: Reference to right or left hand side of the

mower and/or front or behind the mower is observed from the operating position.

LOOSE PARTS

- a. Side Discharge Chute
- b. Owner's Manual
- c. A Bottle of Engine Oil

TOOLS REQUIRED

- a. Pair of Pliers
- b. Funnel

DISCONNECTING SPARK PLUG

- Before setting up your lawn mower, disconnect the spark plug wire from the spark plug, and ground it against the engine. See Figure 2.
- Attach rubber boot to a bolt on the engine to ground.

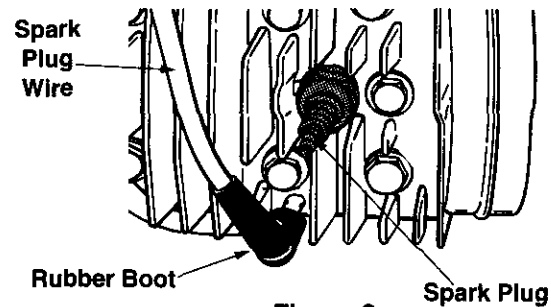


Figure 2

ASSEMBLING HANDLE

- Raise the lower handle in the direction shown in Figure 3A. The lower handle should snap into place.

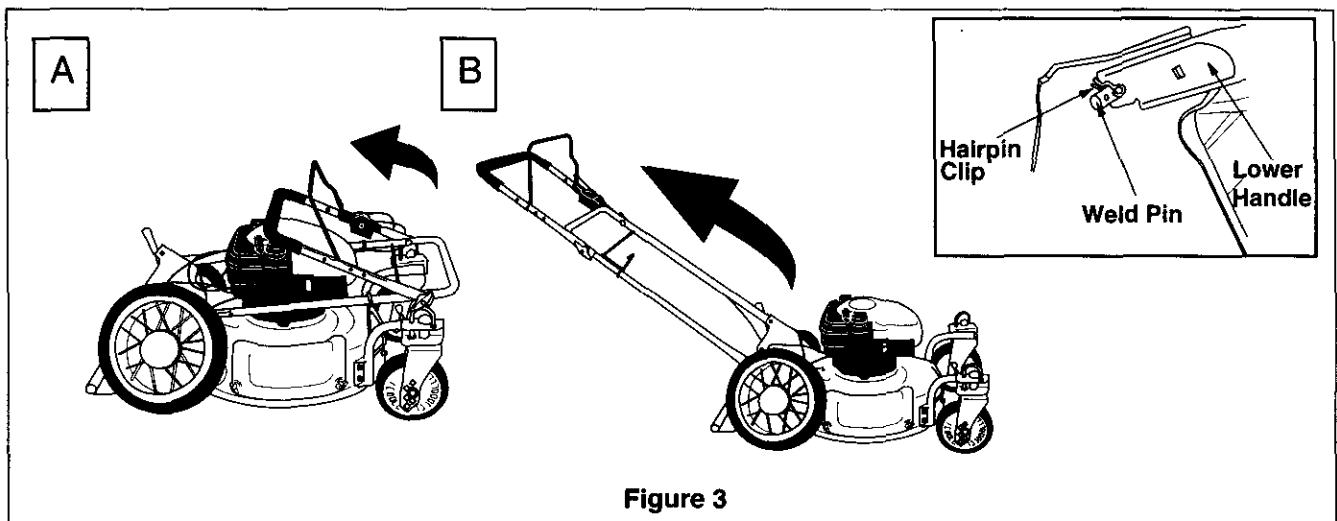


Figure 3

Note: Make sure to route the cables inside the lower handle. Also do not crimp the cables while lifting the handle up.

For shipping purposes, the hairpin clip is placed in the outer hole of the weld pin on the lower handle.

- Remove the hairpin clip from the outer hole of the weld pin.
- Using a pair of pliers, insert the hairpin clip into the inner hole in the weld pin. Repeat on other side. See Figure 3 inset.
- Raise the upper handle in the direction shown in Figure 3B. Tighten the wing nuts which are already on the handle.
- Attach the cables to the lower handle with the two cable ties already on the lower handle. Pull tight the cable ties and cut off the extra.

ATTACHING STARTER ROPE

The rope guide is already attached to the right side of the upper handle of your mower. See Figure 4.

- With the spark plug wire disconnected and grounded, hold the blade control handle against the upper handle, and pull the starter rope out of the engine.
- Slip the rope through the rope guide. Tighten the wing nut holding the rope guide to the upper handle.

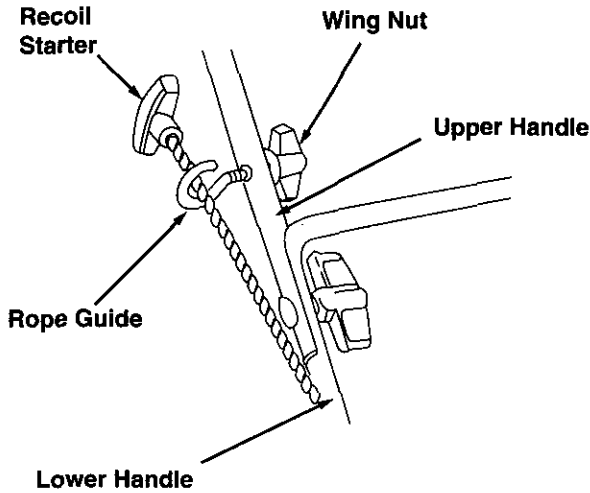


Figure 4

ATTACHING DISCHARGE CHUTE

Your lawn mower was shipped as a mulcher. Remove the mulching cover and attach the side discharge chute for discharging grass clippings.

- Remove three plastic wing nuts holding the

mulching cover to the deck. See Figure 5A. Keep the cover in a safe place for future use. Save the wing nuts.

- Place the side discharge chute on the deck in place of the mulching cover so that the top flange of the discharge chute goes under the deck. See Figure 5B.
- Align the three slots on the chute with the hardware slots on the deck.
- Secure with the wing nuts earlier removed. Tighten the wing nuts.

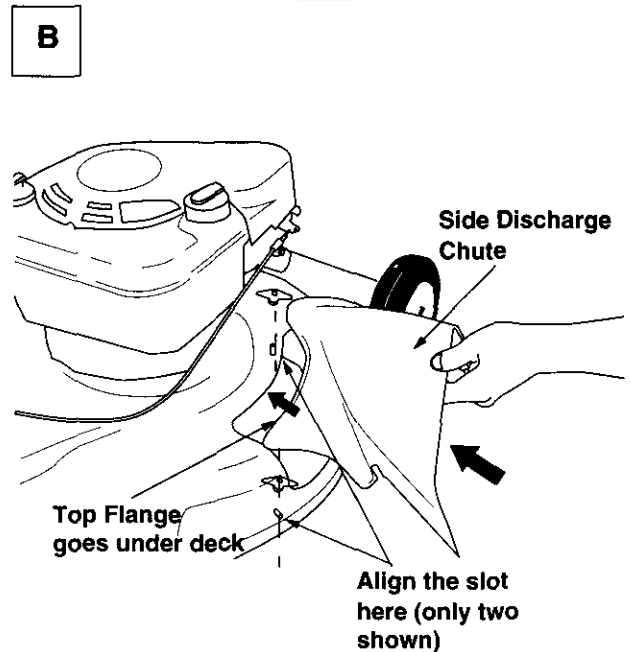
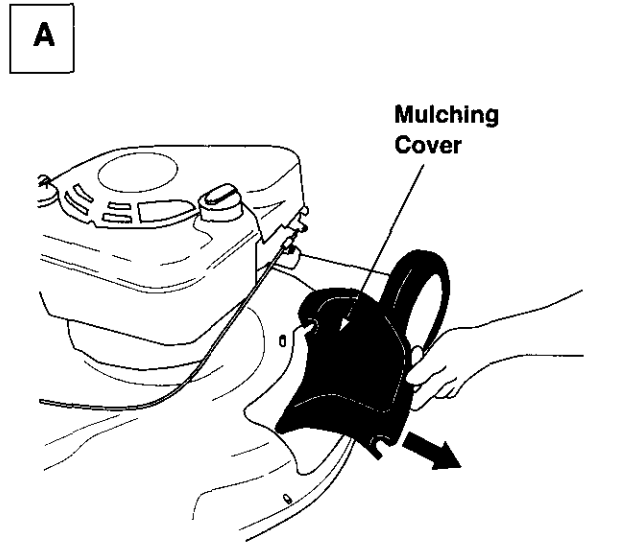


Figure 5

OPERATION

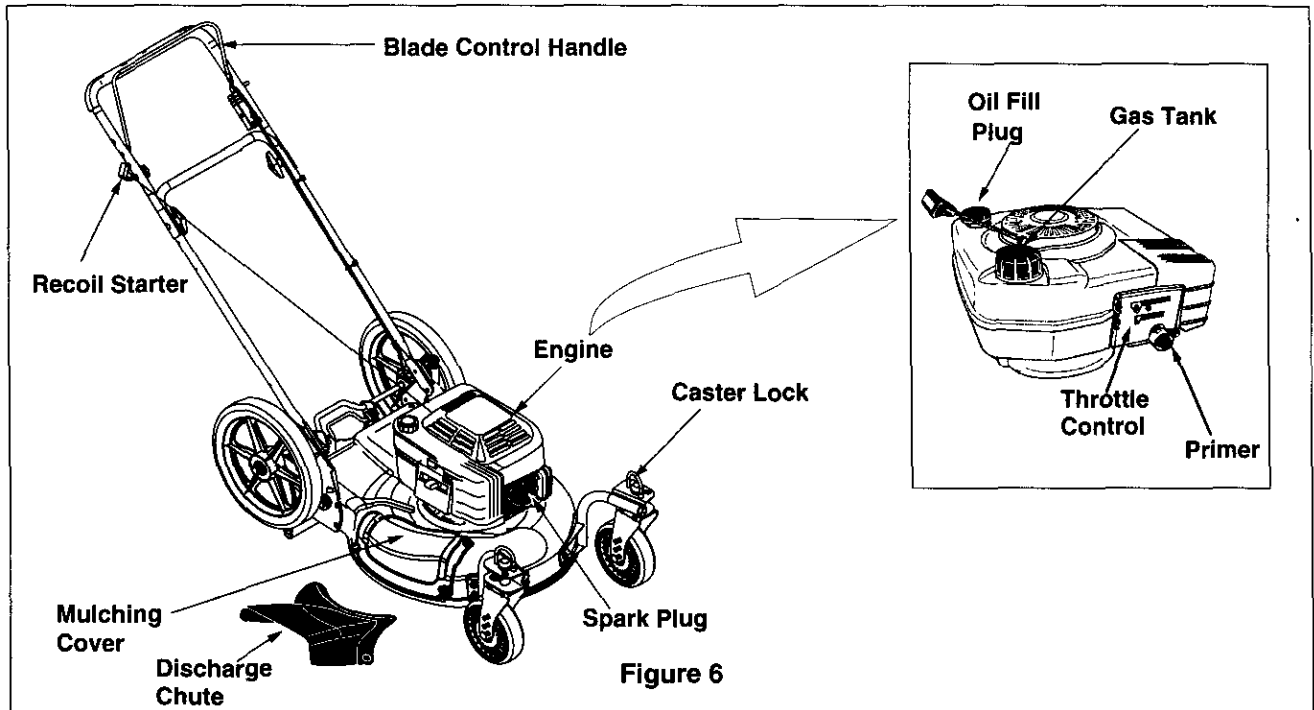
KNOW YOUR LAWN MOWER

(Refer to Figure 6.)

Read this owner's manual and safety rules before operating your lawn mower. Compare the illustrations in Figure 6 with your lawn mower to familiarize yourself with the location of various controls and adjustments. Save this manual for future reference.



The operation of any lawn mower can result in foreign objects being thrown into the operator's eyes and causing severe eye damage. **Always wear safety glasses** while operating the mower, or while performing any adjustments or repairs on it.



Recoil Starter

The recoil starter is attached to the handle. Stand behind the unit and pull the recoil starter to start the unit.

Primer

The primer is used to pump gas into the carburetor. Use it to start a cold engine, but do not use it to restart a warm engine after short shutdown.

Blade Control Handle



WARNING: This control mechanism is a safety device. **Never attempt to bypass** its operations.

The blade control handle is located on the upper handle of the mower. The blade control handle must be depressed in order to operate the unit. Release the blade control handle to stop the engine and blade.

Throttle Control

The throttle control is used to regulate engine speed. It cannot be used to stop the engine.

Caster Wheels

Your mower is equipped with caster wheels in front. The casters can be locked in a straight ahead position for mowing on hills, or can be left unlocked to swivel freely on level ground.

MEETS CPSC BLADE SAFETY STANDARDS

Craftsman Walk-Behind Lawn Mowers conform to the safety standards of the American National Standards Institute and the U.S. Consumer Product Safety Commission.

STOPPING ENGINE

- Release blade control handle to stop the engine and the blade.
- Disconnect spark plug wire and move away from spark plug to prevent accidental starting.



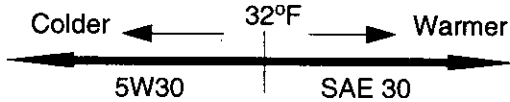
WARNING: Before using your lawn mower, again refer to the **safety rules** on pages 3-5 of this manual. **Always be careful.**

GAS AND OIL FILL-UP

(Refer to Figure 7)

Oil (Packed with unit)

- Only use high quality detergent oil rated with API service classification SF, SG or SH. Select the oil's viscosity grade according to your expected operating temperature. Follow the chart below.



Oil Viscosity Grade Chart

- Use SAE30 oil; *do not use* 10W40 oil.
- Fill oil sump and check the oil level. See Figure 7.
 - a. Position the mower on level ground.
 - b. Clean area around oil fill plug.
 - c. Remove oil fill plug and dipstick.
 - d. Wipe dipstick clean, insert it into oil fill hole and tighten securely.
 - e. Remove dipstick and check oil level. If the oil is not upto FULL mark on the dipstick, pour recommended oil through the oil fill and check the level again.
- Install oil fill plug and dipstick, tighten securely.

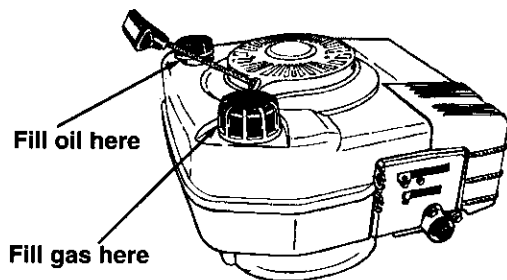


Figure 7

NOTE: Although multi-viscosity oils (5W30, 10W30, etc.) improve starting in cold weather, these multiviscosity oils will result in increased oil consumption when used above 32°F. Check the oil level more frequently to avoid possible engine damage from running low on oil.

Gasoline



Never fill fuel tank indoors, or when engine is running or hot. Do not smoke when filling fuel tank.

- Clean area around fuel cap. Remove cap. See Figure 7.
- Use a funnel to prevent spillage.
- Pour approximately 1.5 quarts of fresh, regular grade, unleaded gasoline slowly to the fuel tank.

IMPORTANT: Never mix engine oil with gasoline.

- Fill tank to 1/2" below the bottom of the filler neck. Wipe any fuel spillage. **Do not fill** fuel tank completely. Provide space for fuel expansion.

STARTING ENGINE



WARNING: Be sure **no one other than the operator** is standing near the lawn mower while starting or operating.

NOTE: To prevent the unit from sliding, place your foot firmly against the tire.

- Attach spark plug wire to spark plug. Make certain the metal cap on the end of the spark plug wire is fastened securely over the metal tip on the spark plug.



Never run engine **indoors or in enclosed, poorly ventilated areas**. Engine exhaust contains carbon monoxide, an odorless and deadly gas.

Keep hands, feet, hair and loose clothing away from any moving parts on engine and lawn mower.

- Move throttle control to FAST position.
- Push primer three times. See Figure 8. Wait about two seconds between each push. In cold weather around 55° F or below, prime five times. **Do not prime to restart a warm engine** after a short shutdown.
- Grasp starter handle and pull rope out slowly until engine reaches the start of compression cycle (rope will pull slightly harder at this point). See Figure 8. Let the rope rewind slowly.
- Pull rope with a rapid, continuous, full arm

stroke. Keeping a firm grip on the starter handle, let the rope return to the starter slowly.

- After the engine starts, move throttle control to desired engine speed.

Note: If engine fails to start after three pulls, repeat steps 2, 3, and 4.

4. Squeeze blade control handle

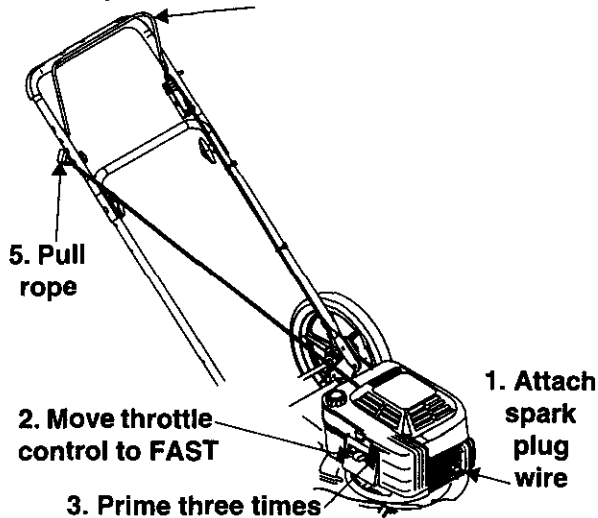


Figure 8

LOCKING CASTERS

If you are cutting grass on a slope, always lock the front wheel casters of your mower for straight ahead operation. On level ground you may leave the casters unlocked to pivot freely.

To turn the mower on a slope with casters locked, depress the handle and raise the front wheels slightly.

- **To lock caster:** Lift and place the lock pin in the larger hole on each caster. See Figure 9.
- **To unlock caster:** Lift and place the lock pin in the smaller hole to allow casters to rotate freely. See figure 9.

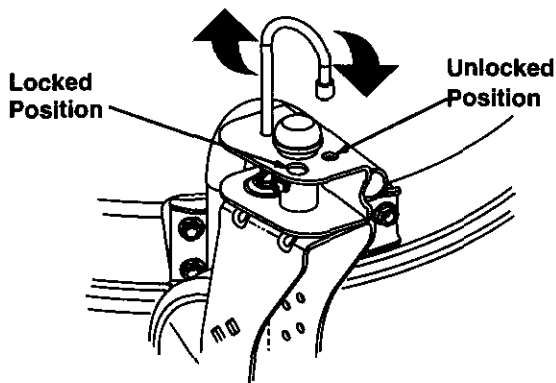


Figure 9



WARNING: Do not mow on slopes with casters unlocked since the mower can drift downhill.

USING YOUR LAWN MOWER

Your mower is designed to operate as a mulching or a side discharge unit.

- For converting from a mulcher to a side discharge unit, refer to instructions on page 8 of this manual.
- For converting from a side discharge unit to a mulcher, replace the side discharge chute with the mulching cover. **Do not operate mower without the mulching cover or the discharge chute properly installed and tightly secured.**
- Be sure that lawn is clear of stones, sticks, wire, or other objects which could damage lawn mower or engine. Such objects could be accidentally thrown by the mower in any direction and cause serious personal injury to the operator and others.
- *For best results, do not cut wet grass* because it tends to stick to the underside of the mower, preventing proper discharge of grass clippings, and could cause you to slip and fall. New grass, thick grass or wet grass may require a narrower cut. Blade speed should be adjusted to the condition of the lawn.
- The *best mowing pattern* is one that allows the clippings to discharge towards the uncut part of the lawn. This permits recutting of the clippings to further pulverize them. When cutting high weeds, discharge towards cut portion, then recut at right angles to first direction.
- For a *healthy lawn*, always cut off one-third or less of the total length of the grass. Lawn should be cut in the fall as long as there is growth.
- This mower is designed to be operated at full throttle to give you the *best cut* and do the most effective job of bagging the cut grass.



WARNING: If you strike a foreign object, stop the engine. Remove spark plug wire from spark plug, thoroughly inspect the mower for any damage. Repair the damage before restarting and operating the mower. Extensive vibration of the mower during operation is an indication of damage. The unit should be promptly inspected and repaired.

HEIGHT ADJUSTMENT

Refer to height adjustments section of this manual on page 16 for instruction on how to adjust the cutting height and the handle height.

For best results in mowing, keep the cutting height position high until it is determined which height is best for your lawn.

MAINTENANCE

GENERAL RECOMMENDATIONS

- Always observe safety rules when performing any maintenance.
- The warranty on this lawn mower does not cover items that have been subjected to operator abuse or negligence. To receive full value from the warranty, operator must maintain the lawn mower as instructed in this manual.
- Changing of engine governed speed will void engine warranty.
- Some adjustments will have to be made periodically to maintain your unit properly.
- All adjustments in the Service and Adjustments section of this manual should be checked at least once each season.
- Follow the maintenance schedule given below.
- Periodically check all fasteners and make sure these are tight.



WARNING: Always stop the engine and disconnect the spark plug wire before performing any maintenance or adjustments.

- Disconnect spark plug wire.
- Drain the gasoline from the lawn mower, or place a piece of plastic under the gas cap.
- Tip the mower so that it rests on the housing. Keep the side with the air cleaner facing up. Hold it firmly.
- Scrape clean the underside of the deck with a suitable tool.
- Put the mower back on its wheels on the ground. If you had put plastic under the gas cap, make sure to remove it now.



WARNING: Never tip the mower more than 90 degrees and **do not leave the mower tipped for any length of time.** Oil can drain into the upper part of the engine causing a starting problem.

NOTE: We do not recommend using a garden hose to clean mower unless the muffler, air filter and carburetor are covered to keep water out. Water in engine can shorten engine life.

CLEANING

The underside of the mower deck should be cleaned after each use to prevent any buildup of grass clippings, leaves, dirt, or other debris. If this debris is allowed to accumulate, it will result in rust and corrosion.



WARNING: Always stop engine, disconnect spark plug wire, and move it away from spark plug before performing any adjustments or repairs.

ENGINE MAINTENANCE

CUSTOMER RESPONSIBILITIES

MAINTENANCE SCHEDULE		After each use	First two hours	Every 25 hours	Every 50 hours	Every 100 hours	Once a season	Before storage	SERVICE DATES				
PRODUCT	Lubricate wheels						✓						
	Lubricate casters			✓									
	Lubricate blade control						✓						
	Clean deck	✓						✓					
	Blade care			✓				✓					
ENGINE	Change oil		✓	✓									
	Service foam filter			✓									
	Replace paper filter					✓							
	Clean engine						✓						
	Check spark plug				✓		✓						
	Check spark arrester (if any)				✓								

Engine Oil

- Only use high quality detergent oil rated with API service classification SF, SG or SH. Select the oil's viscosity grade according to your expected operating temperature. Refer to page 10 of this manual for viscosity chart.
- Stop engine and wait several minutes before checking oil level. With engine on level ground, the oil must be to FULL mark on dipstick .
- Change engine oil after the first five hours of operation, and every twenty-five hours thereafter.

To Change Engine Oil

Change oil after first two operating hours and every 25 operating hours thereafter. Drain oil while engine is warm. Follow the instructions given below.

- Tip the mower with the spark plug facing up.
- Place a container under the dipstick. Pull the dipstick out of oil fill.
- Drain the oil sump empty, collecting oil in an approved container.
- Fill oil sump with 27 ounces of fresh SAE 30 oil. Refer to page 10 of this manual for oil fill-up instructions.

Air Cleaner

The air cleaner prevents damaging dirt, dust, etc., from entering the carburetor and being forced into the engine and is important to engine life and performance. The air cleaner consists of a foam filter (if so equipped), and a paper filter.



WARNING: Never run the engine without air cleaner completely assembled.

To Service Air Cleaner:

1. Replace **paper filter** every 100 hours of use, more often if used in extremely dusty conditions.
2. Service **foam filter** (if so equipped) every three months or after every 25 hours of use. Clean and re-oil daily if used in extremely dusty conditions.
 - Remove cover screw and cover; do not remove screw from cover. See Figure 10 inset.
 - Swing cover down to remove from hinge. See Figure 10.
 - Inspect foam filter for discoloration or dirt accumulation. If either is present, service filter.
 - Wash foam filter in water and detergent solution, and squeeze (do not twist) until all dirt is removed.
 - Rinse the foam filter thoroughly in clear water.

- Wrap in a clean cloth and squeeze (do not twist) until completely dry, or allow to air dry.
- Saturate with engine oil and squeeze (don't twist) to distribute oil and remove excess oil.

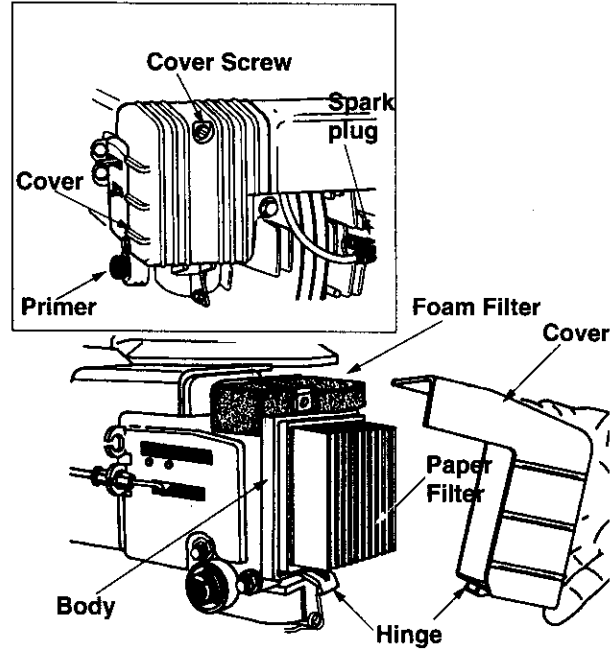


Figure 10

- If necessary, replace paper filter (do not attempt to clean). Install new filter on base.
- Swing cover upward and align hinge on the cover with that on the engine.
- Tighten cover screw securely.

Clean Engine

- Clean engine periodically. Remove dirt and debris with a cloth or brush.
- Frequently remove grass clippings, dirt and debris from cooling fins, air intake screen and levers and linkage. This will help ensure adequate cooling and correct engine speed.

NOTE: Do not clean with a forceful spray of water as water could contaminate the fuel system.

Spark Plug

- Clean spark plug and reset gap to .030" at least once a season or every 50 hours of operation. See Figure 11. Spark plug replacement is recommended at the start of each season. Refer to engine parts list for correct spark plug type.

NOTE: Do not sandblast spark plug. Spark plug should be cleaned by scraping or wire brushing and

washing with a commercial solvent.

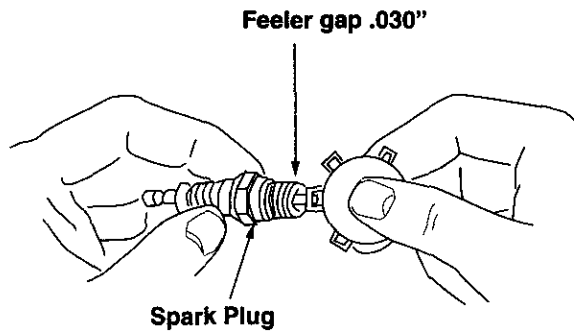


Figure 11

Muffler



WARNING: Do not operate the lawn mower **without a muffler**, or tamper with the exhaust system. Damaged mufflers or spark arresters could create a fire hazard. Temperature of muffler and nearby areas may exceed 150° F (65°C).

- Inspect periodically, and replace if necessary. If your engine is equipped with a spark arrester screen assembly, remove every 50 hours for cleaning and inspection. Replace if damaged.

LUBRICATION

Wheels

- Lubricate the wheels at least once a season with light oil or engine oil. Also, if the wheels are removed for any reason, lubricate the surface of the axle bolt and the inner surface of the wheel with light oil.

Caster Assembly

- Grease fittings are provided for easy lubrication of the swivel pins located on the front caster

assembly. Use a grease gun to lubricate the casters every 25 operating hours or so.

Blade Control Handle

- Lubricate the pivot points on the blade control handle and the brake cable at least once a season with light oil. The blade control handle must operate freely in both directions. For complete lubrication chart, see Figure 12.

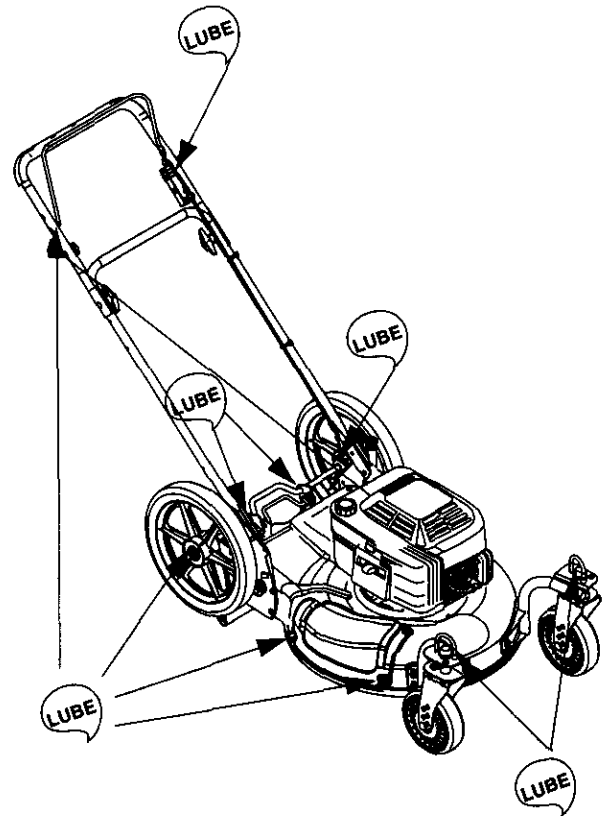


Figure 12

SERVICE & ADJUSTMENTS

BLADE CARE

Periodically inspect the blade adapter for cracks, especially if you strike a foreign object. Replace when necessary.



WARNING: When removing the cutting blade for sharpening or replacement, **protect hands by using heavy gloves or a rag to grasp the cutting blade.**

- Disconnect spark plug wire from spark plug.
- Turn mower on its side making sure that the air filter and the carburetor are up.

To Remove Blade

- Remove the bolt and blade bell support which hold the blade and adapter to the engine crankshaft. See Figure 13.
- Remove the blade and adapter from the crankshaft.

To Replace Blade:

- Before reinstalling the blade and the blade adapter to the unit, lubricate the engine crankshaft and the inner surface of the blade adapter with light oil.
- Install the blade adapter on the crankshaft with the "star" away from the engine. See Figure 13.

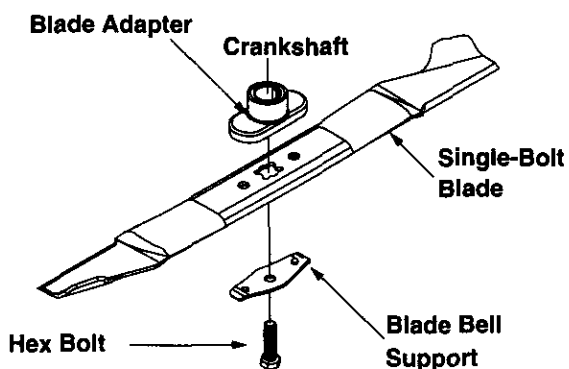


Figure 13

- Place the new blade with the side marked bottom (or with part number) facing away from the adapter.
- Place the bell support next. Make sure to align the tabs in the holes of the blade with the hole in the bell support.
- Insert the hex bolt through the blade assembly. Figure 13 shows the correct order of assembly.
- Use block of wood to hold blade again while you tighten the bolt clockwise. Follow the

recommended torque for the bolt which is 450-600 in.-lbs.

IMPORTANT: The bolt, used to secure the blade to the engine, is specially heat-treated. **Do not substitute.** To order replacement bolt, refer to the Repair Parts section of this manual.



WARNING: To ensure safe operation of your unit, **all nuts and bolts must be checked** periodically for correct tightness.

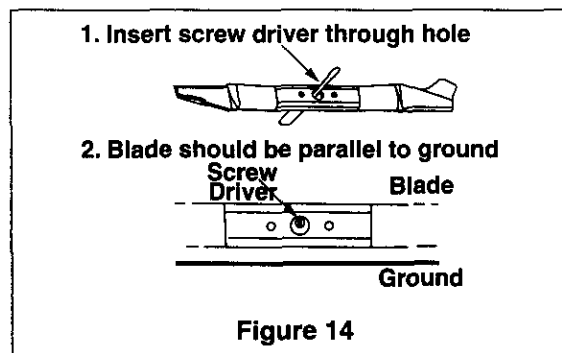
To Sharpen Blade:

The blade can be sharpened with a file or on a grinding wheel. Do not attempt to sharpen while on the mower.

- Follow the original angle of grind as a guide. Make sure that each cutting edge receives an equal amount of grinding to prevent an unbalanced blade.

NOTE: An unbalanced blade will cause excessive vibration when rotating at high speeds, thus causing possible damage to the mower and/or personal injury.

- Test the blade by balancing it on a round shaft screwdriver or a blade balancer. See Figure 14.
- If the blade is not balanced, remove metal from the heavy side until it balances evenly.



ENGINE ADJUSTMENTS



WARNING: Do not make unnecessary adjustments on the engine. Factory settings are satisfactory for most conditions.

If any adjustments are made to the engine while the engine is running, **keep clear of all moving parts. Be careful of heated surfaces and muffler. Keep your hands away from these parts.**

Carburetor

The carburetor has been pre-set at the factory and should not require adjustment.

- If the engine on your mower does not operate properly due to suspected carburetor problems,

take your lawn mower to your nearest SEARS service center.

- Engine performance may be affected in altitudes above 4000 feet. To improve engine performance, install a high altitude adjustment kit, available at the SEARS service center.

NOTE: A dirty air cleaner will cause an engine to run rough. Be certain air cleaner is clean and attached to the carburetor.

Engine Speed



WARNING: Overspeeding engine above the factory setting can be **dangerous**. Do not attempt to increase engine speed or it may result in personal injury. Changing of engine governed speed **will void engine warranty**.

- If you believe the engine is running too fast or too slow, take your lawn mower to the nearest SEARS service center.

ADJUSTING HANDLE HEIGHT

Your mower is shipped with the handle in the higher height position. To lower the handle height, proceed as follows.

- Remove the starter rope from the rope guide.
- Remove the upper handle by removing the hand knobs and carriage bolts. Lay the upper handle out of the way, being careful not to bend or kink the cables.
- Remove the hairpin clips from the weld pins on the handle brackets. Refer to Figure 3 inset. Press out on the legs of the lower handle. Remove lower handle from the mower.
- Turn the lower handle around so the notch on the bottom of the lower handle is facing forward as shown in Figure 15. Reassemble, placing the bottom holes in the handle over the weld pins in the handle mounting bracket.
- Reassemble the upper handle to the lower handle.

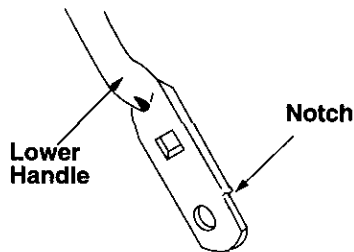


Figure 15

- Place the hairpin clips in the inner holes in the weld pins and attach the starter rope as instructed in the Assembly section.

ADJUSTING CUTTING HEIGHT

IMPORTANT: All wheels must be placed in the **same relative position**. Raise the mower wheels for low cut and lower the wheels for high cut. For rough or uneven lawns, move the height adjustment lever to a higher position. This will help stop scalping of the grass.

Rear Wheel Adjustment

The **rear wheel** cutting height adjustment rod is located between the two rear hi-wheels.

- Squeeze the two adjustment rods together and pull towards the operator.
- Move rods upward or downward to any one of the six height positions and reinsert. See Figure 16.

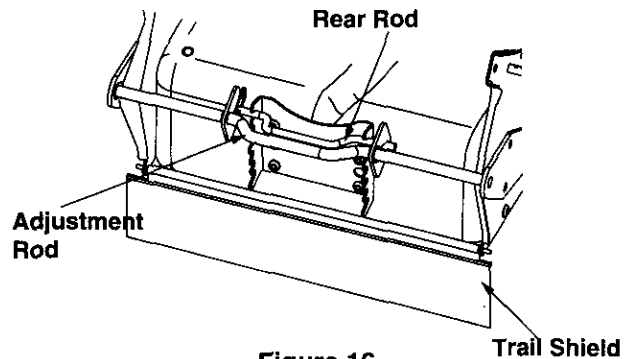


Figure 16

- Make sure that the rear rod sits in the groove of the new height position.

Front Wheel Adjustment

The **front wheel** cutting height is determined by placing the axle rod in one of the six height adjustment positions in each caster assembly on the front wheels.

- To adjust, remove the wing nut from the axle bolt. See Figure 17.
- Slide the axle bolt and spring washer from the assembly and select a cutting height.
- With the spring washer on the axle bolt, reinsert the axle bolt in the square hole desired, through the wheel assembly. See Figure 17.
- Secure with wing nut previously removed.

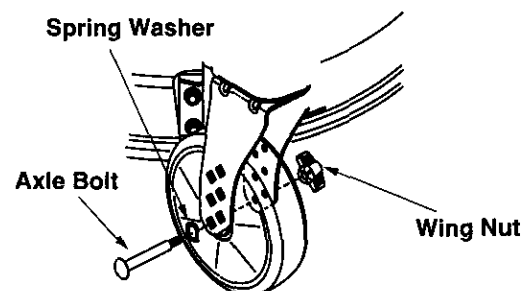


Figure 17

STORAGE

Prepare your lawn mower for storage at the end of the season or **if the unit will not be used for 30 days or more**. Store the mower in a **clean, dry area**.

MOWER

- Clean underside of the mower following instructions in the Maintenance section of this manual.
- Inspect and replace/sharpen blade, if required. Refer to the Maintenance section of this manual for blade care instructions.
- Lubricate mower following the lubrication chart in Figure 12 of this manual.
- You can fold your mower's handle for convenient storage as shown in Figure 18.
 - a. Remove the starter rope from the rope guide.
 - b. Loosen the two hand knobs on the sides of the handle, and let the upper handle fold down to the rear.
 - c. Move the hairpin clips to the outer hole in the weld pins on the handle mounting brackets.
 - d. Spread the sides of the lower handle, and push it forward and down.

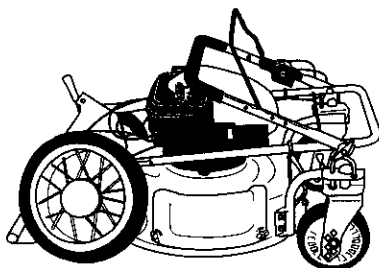


Figure 18

NOTE: When folding the handle for storage or transportation, be careful not to bend or kink the cables.

ENGINE

IMPORTANT: It is important to prevent gum deposits from forming in essential fuel system parts such as carburetor, fuel filter, fuel hose, or tank during storage. Also, experience indicates that alcohol blended fuels (called gasohol or using ethanol or methanol) can attract moisture which leads to separation and formation of acids during storage.

Acidic gas can damage the fuel system of an engine while in storage.

Drain fuel system & carburetor



WARNING: Drain fuel into approved container outdoors **away from open flame**. Be sure engine is cool. **Do not smoke**.

- Drain the fuel tank.
- Start the engine and let it run until the fuel lines and carburetor are empty.
- Drain carburetor by removing bowl drain screw which is located below the carburetor. See Figure 19.

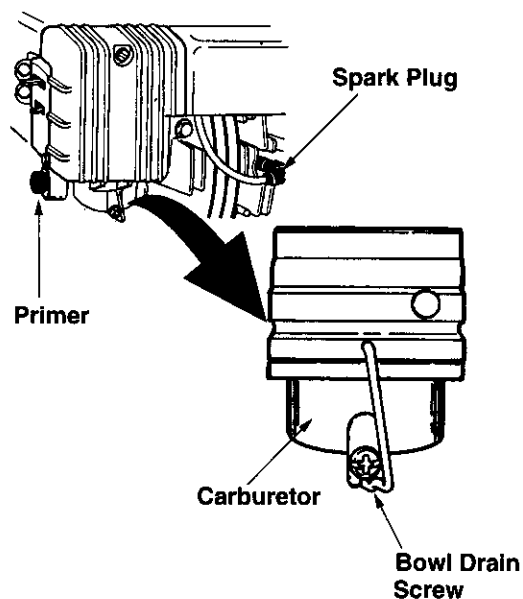


Figure 19

Note: Do not drain carburetor if using fuel stabilizer.



WARNING: Never use engine or carburetor cleaner products in the fuel tank or **permanent damage** may occur.

- Use fresh fuel next season.

Use fuel stabilizer

NOTE: Fuel stabilizer is an acceptable alternative in minimizing the formation of fuel gum deposits during storage.

- Add stabilizer to gasoline in fuel tank or storage container.
- Always follow the mix ratio found on stabilizer container.
- Run engine at least 10 minutes after adding

stabilizer to allow the stabilizer to reach the carburetor.

- Do not drain the gas tank and carburetor if using fuel stabilizer. Drain all the oil from the crankcase (This should be done after the engine has been operated and is still warm) and refill the crankcase with fresh oil.

Oil cylinder bore

After you have drained the fuel tank, protect the inside of the engine as follows:

- Remove spark plug, pour approximately one ounce (30 ml) of engine oil into spark plug hole, and crank slowly to distribute oil.



WARNING: Avoid spray from spark plug hole when cranking the engine slowly.

- Replace spark plug; do not connect spark plug wire.

Change oil

- Change oil if it has not been changed in the last three months. For instructions on how to

change oil refer to the Maintenance section of this manual.

Clean engine

- Clean engine and remove any grass clippings, dirt, or chaff from the exterior of the engine.
- Remove any dirt or debris from cooling fins, air intake screen, levers, and linkage.

OTHER

- Do not store gasoline from one season to another.
- Replace your gasoline can if it starts to rust. Rust and/or dirt in the gasoline will cause problems. Store unit in a clean, dry area. Do not store next to corrosive materials, such as fertilizer.

NOTE: *If storing in an unventilated or metal storage shed, be certain to rustproof the equipment by coating with a light oil or silicone.*

TROUBLE-SHOOTING

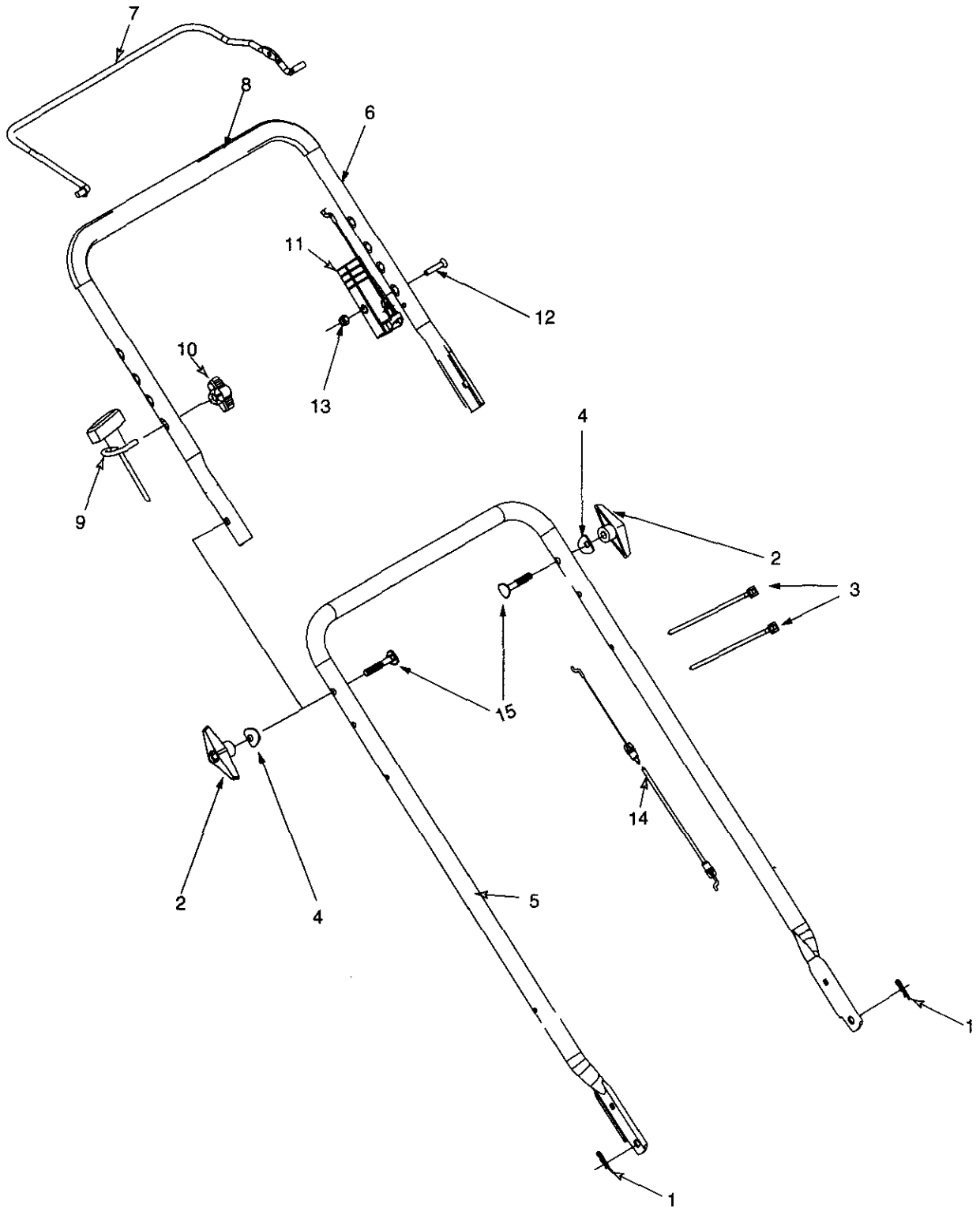
PROBLEM	POSSIBLE CAUSE	CORRECTIVE ACTION
Engine fails to start	<ol style="list-style-type: none"> 1. Blade control handle disengaged 2. Spark plug wire disconnected 3. Throttle control lever not in starting position 4. Fuel tank empty, or stale fuel 5. Blocked fuel line 6. Faulty spark plug 7. Engine flooded 	<ol style="list-style-type: none"> 1. Engage blade control handle. 2. Connect wire to spark plug. 3. Move throttle lever to starting position. 4. Fill tank with fresh, clean fuel. 5. Clean fuel line. 6. Clean, adjust gap or replace. 7. Crank engine with throttle in FAST position.
Engine runs erratic	<ol style="list-style-type: none"> 1. Spark plug wire loose 2. Blocked fuel line or stale fuel 3. Vent in gas cap plugged 4. Water or dirt in fuel system 5. Dirty air cleaner 	<ol style="list-style-type: none"> 1. Connect and tighten spark plug wire. 2. Clean fuel line, fill tank with clean, fresh gasoline. 3. Clear vent. 4. Drain fuel tank. Refill with fresh fuel. 5. Clean air cleaner. Refer to Maintenance section of this manual.
Engine overheats	<ol style="list-style-type: none"> 1. Engine oil level low 2. Air flow restricted 	<ol style="list-style-type: none"> 1. Fill crankcase with proper oil. 2. Clean lawn mower engine.
Occasional skip (hesitates) at high speed	<ol style="list-style-type: none"> 1. Spark plug gap too close 	<ol style="list-style-type: none"> 1. Adjust gap to .030 inches.
Idles poorly	<ol style="list-style-type: none"> 1. Spark plug fouled, faulty, or gap too wide 2. Dirty air cleaner 	<ol style="list-style-type: none"> 1. Reset gap to .030 inches or replace spark plug. 2. Clean air cleaner following instructions on page ---.
Excessive vibration	<ol style="list-style-type: none"> 1. Cutting blade loose or unbalanced 2. Bent cutting blade 3. Bent engine crankshaft 	<ol style="list-style-type: none"> 1. Tighten blade and adapter, balance blade. 2. Replace blade. 3. Contact your SEARS Service Center.
Mower will not mulch grass	<ol style="list-style-type: none"> 1. Engine speed too low 2. Wet grass 3. Excessively high grass 4. Dull blade 	<ol style="list-style-type: none"> 1. Move throttle lever to FAST position. 2. Wait until later to cut. 3. Mow once at a high cutting height, then mow again at desired height. Make a narrower cutting swath (1/2) width. Do not cut off more than 1/3 of the total length. 4. Sharpen or replace blade.
Uneven cut	<ol style="list-style-type: none"> 1. Wheels not in same height position 2. Dull blade 	<ol style="list-style-type: none"> 1. Place all four wheels in same relative height position. 2. Sharpen or replace blade.



For repairs beyond the minor adjustments listed above, please contact your nearest SEARS Service Center.

PARTS LIST

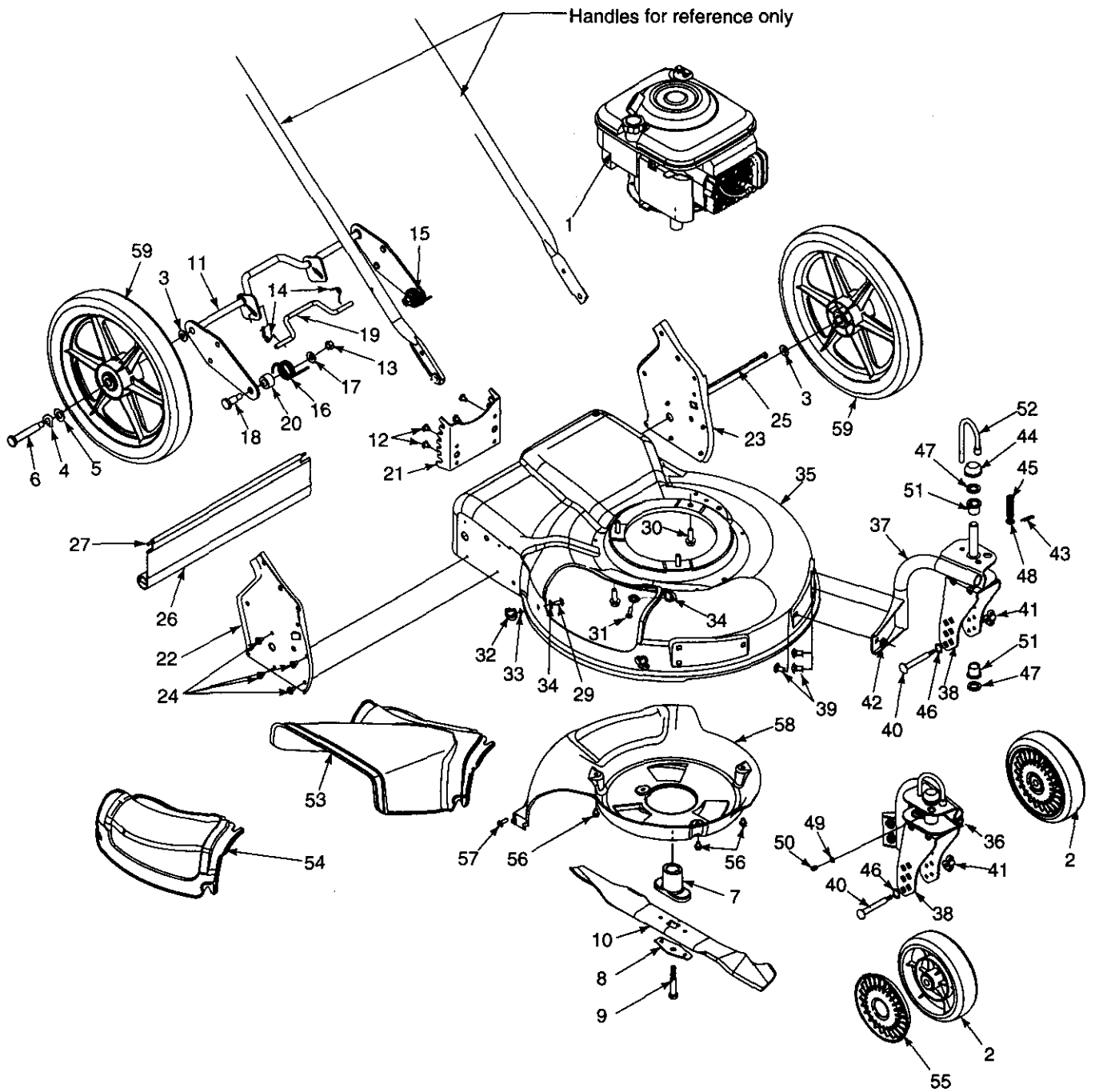
SEARS CRAFTSMAN 5.5 H.P. LAWN MOWER MODEL 247.370320



SEARS CRAFTSMAN 5.5 H.P. LAWN MOWER MODEL 247.370320

Key No.	Part No.	Description
	770-0751M	Owner's Manual (not shown)
1.	714-0104	Hairpin Clip
2.	720-0241	Wing Nut
3.	726-0240	Cable Tie
4.	736-0451	Saddle Washer
5.	749-0907	Lower Handle
6.	749-0439B	Upper handle
7.	747-0824	Control Handle
8.	720-0295	Foam Grip
9.	710-1205	Rope Guide
10.	720-0279	Handle Knob
11.	746-0883	Control Cable Box
12.	710-0605	Oval C-Sunk Scr.
13.	712-0324	Hex L-Nut 1/4-20 Thd.
14.	746-0922	Control Cable
15.	710-1174	Carriage Bolt

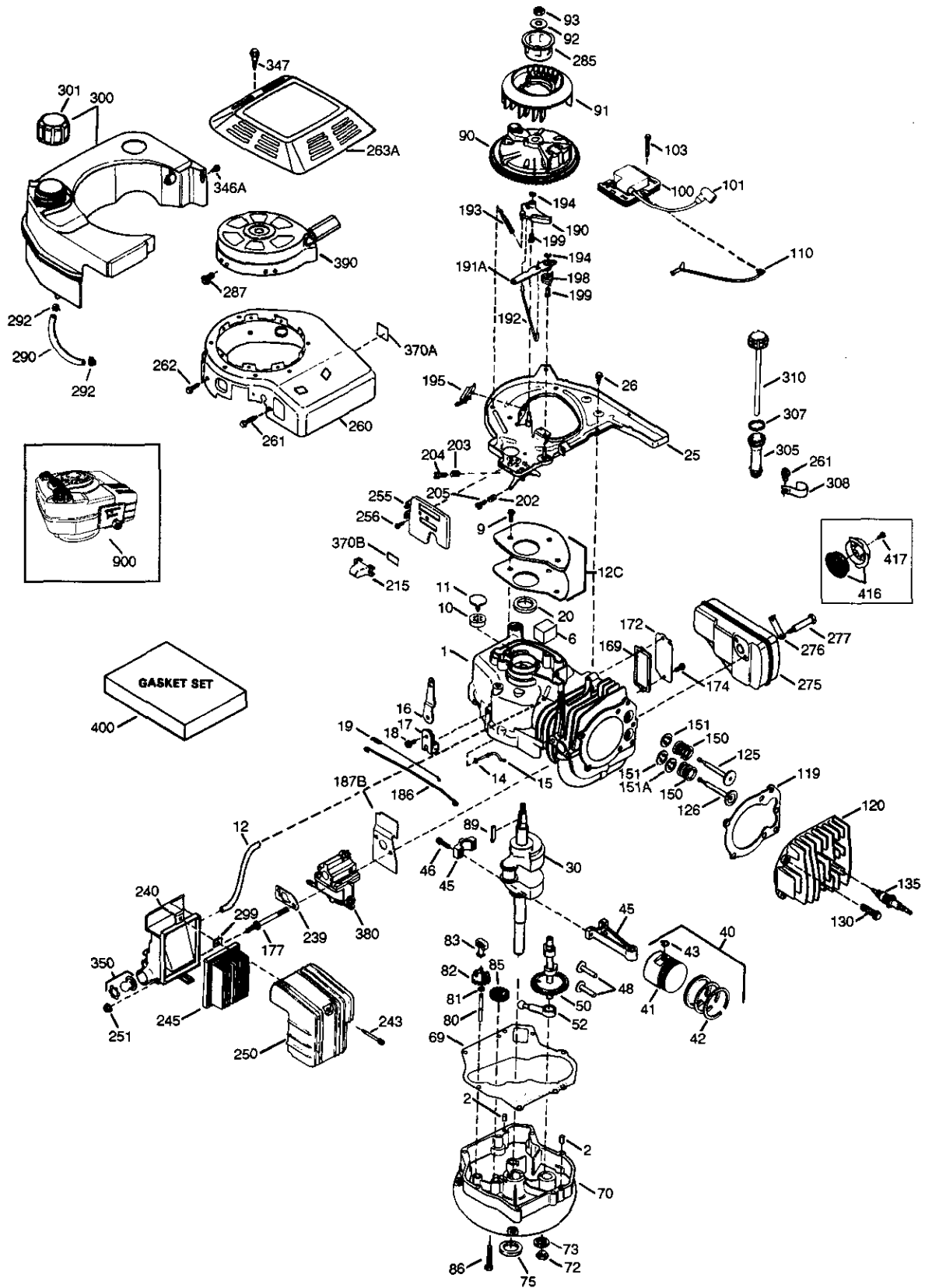
SEARS CRAFTSMAN 5.5 H.P. LAWN MOWER MODEL 247. 370320



SEARS CRAFTSMAN 5.5 H.P. LAWN MOWER MODEL 247.370320

Key No.	Part No.	Description	Key No.	Part No.	Description
1.	143.975512	Engine, CRAFTSMAN 143.975512	30.	710-0654A	TT Screw 3/8 -16 x 1.00
2.	734-1849	Wheel, Front Caster 7 X 2	31.	710-0703	Carriage Screw 1/4-20 x .75
3.	736-0105	Bell Washer .401 X .870 X .063	32.	712-0397	Wing Nut
4.	736-0182	Spring Washer .50 I.D. x 1.0 O.D. x .022	33.	726-0233	Push Nut
5.	736-0272	Flat Washer .510 x 1.0 x .060	34.	736-0204	Flat Washer
6.	738-0481	Shoulder Screw .500 x 2.62: 3/8 -16	35.	782-0049	Deck 21"
7.	748-0377B	Blade Adapter	36.	682-9020	Caster Assembly, RH
8.	736-0524A	Blade Bell Support	37.	682-9021	Caster Assembly, LH
9.	710-1257	Hex Bolt 3/8 - 24 x 2.5 Gr. 8	38.	682-9024	Caster Bracket Assembly
10.	742-0741	Blade 21", Mulching	39.	710-0260	Carriage Bolt 5/16-18 x .62
11.	647-0028	Hi-wheel Height Adj. Support	40.	711-1146	Caster Axle .374 x 2.59
12.	710-1348	AB Screw 1/4-14 x .50	41.	712-0397	Wing Nut
13.	712-3017	Hex Nut 3/8 -16	42.	712-3004A	Flange Nut 5/16-18 Gr.5
14.	732-0845	Torsion Spring	43.	714-0104	Hairpin Clip
15.	732-0843	Torsion Spring, RH	44.	726-0214	Push Cap
16.	732-0844	Torsion Spring, LH	45.	732-0306	Compression Spring
17.	736-0105	Bell Washer .401 x .870 x .063	46.	736-0232	Wave Washer .530 I.D. x .780 O.D.
18.	738-0145	Shoulder Screw .500 x .840	47.	736-0232	Wave Washer .530 I.D. x .780 O.D.
19.	747-0971	Handle, Height Adjustment	48.	736-0264	Flat Washer .330 I.D. x .630 x .06
20.	750-1090	Spacer .500 x 1.0 x .600	49.	736-0931	Fl.Wash. .203 I.D. x .403 x .040
21.	782-0572	Height Adj. Bracket, RH	50.	737-3000	Lube Fitting
22.	682-3054	Handle Bracket, RH	51.	741-0685	Flange Bearing
23.	682-3055	Handle Bracket, LH	52.	747-0924	Lock Pin, Front Wheel
24.	710-1348	AB Screw 1/4-14	53.	731-1832	Discharge Chute
25.	725-0157	Cable Tie	54.	731-1833	Mulching Cover
26.	731-1901	Trail Shield	55.	731-1887	Hubcap
27.	732-0842	Trail Shield Wire	56.	710-0653	Hex Screw, TT 1/4-20 x .375
28.	746-0922	Control Cable 47"	57.	710-1220	HL Screw
29.	710-0134	Carriage Screw 1/4-20 x .62 Gr. 2	58.	731-1828	Rear Baffle
			59.	734-1848	Hi-Wheel 14 X 2

**CRAFTSMAN ENGINE NO. 143.975512 FOR
CRAFTSMAN 5.5 H.P. LAWN MOWER MODEL 247.370320**



**CRAFTSMAN ENGINE NO. 143.975512 FOR
CRAFTSMAN 5.5 H.P. LAWN MOWER MODEL 247.370320**

Key No.	Part No.	Description	Key No.	Part No.	Description
--	0	RPM High 3100 to 3400	46	32610A	Connecting Rod Bolt
--	0	RPM Low 2000 to 2300	48	36030	Valve Lifter
1	36177	Cylinder	50	36031A	Camshaft (MCR)
2	27652	Dowel Pin	52	29914	Oil Pump Ass'y.
6	36059	Breather Element	69	36032A	Mounting Flange Gasket
9	590568	Screw, 10-24 x 3/4"	70	37026	Mounting Flange
10	36002	Breather Valve Body	72	30572	Oil Drain Plug
11	36003	Check Valve	73	28833	Drain Plug Gasket
12	32447	Breather Tube	75	36010	Oil Seal
12C	36005A	Breather Cover & Gasket	80	30574A	Governor Shaft
14	28277	Washer	81	30590A	Washer
15	36006	Governor Rod (Machined)	82	30591	Governor Gear Ass'y.
16	36008	Governor Lever	83	36057	Governor Spool
17	31335	Governor Lever Clamp	85	36034	Idler Gear
18	651018	Screw, Torx	86	650924	Screw, 1/4-20 x 1-9/16"
19	36082	Governor Spring	89	611154	Flywheel Key
20	36010	Oil Seal	90	611155	Flywheel
25	36011	Blower Housing Baffle	91	611156	Flywheel Fan
26	650802	Screw, 1/4-20 x 5/8"	92	650815	Belleville Washer
30	37025	Crankshaft	93	650816	Flywheel Nut
40	36073	Piston, Pin & Ring Set (Std.)	100	34443A	Solid State Ignition
40	36074	Piston, Pin & Ring Set (.010 OS)	101	610118	Spark Plug Cover
40	36075	Piston, Pin & Ring Set (.020 OS)	103	651007	Screw, Torx
41	36070	Piston & Pin Ass'y. (Std.)	110	36054	Ground Wire
41	36071	Piston & Pin Ass'y. (.010 OS)	119	36061	Cylinder Head Gasket
41	36072	Piston & Pin Ass'y. (.020 OS)	120	36120A	Cylinder Head
42	36076	Ring Set (Std.)	125	36471	Exhaust Valve (Std.)
42	36077	Ring Set (.010 OS)	125	36472	Exhaust Valve (1/32" OS)
42	36078	Ring Set (.020 OS)	126	29314B	Intake Valve (Std.)
43	20381	Piston Pin Retaining Ring	126	29315C	Intake Valve (1/32" OS)
45	36023A	Connecting Rod Ass'y.	130	6021A	Screw, 5/16-18 x 1-1/2"

(Table continued on Page 26)

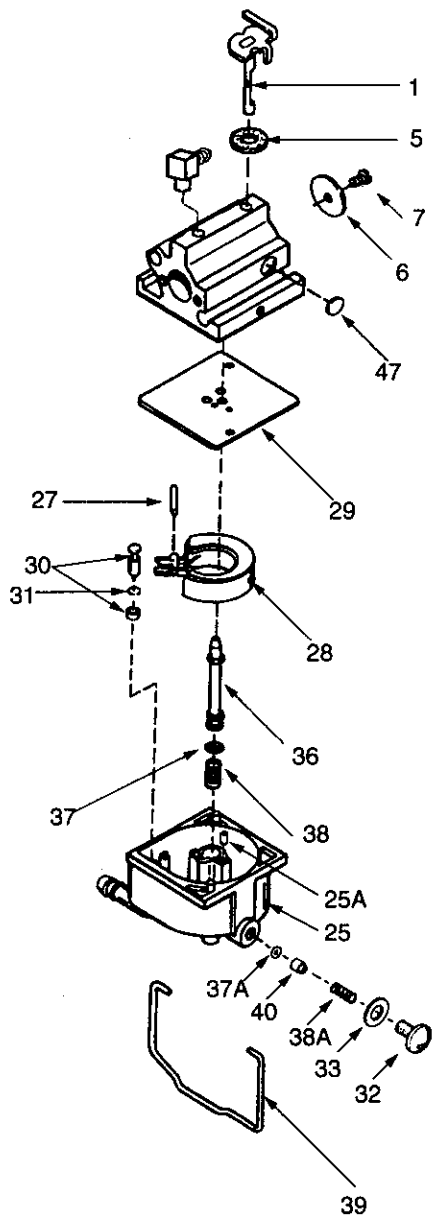
(Table continued from Page 25)

Key No.	Part No.	Description	Key No.	Part No.	Description
135	35395	Spark Plug (J19LM)	260	36153	Blower Housing
150	31672	Valve Spring	261	650737	Screw, 1/4-20 x 1/2"
151	31673	Lower Valve Spring Cap	262	650929	Screw, 1/4-20 x 11/16"
151A	40016	Intake Valve Seal	263A	36156A	Starter Grill
169	27234A	Valve Spring Box Gasket	275	36107	Muffler
172	32755	Valve Spring Box Cover	276	36043	Locking Plate
174	30200	Screw, 10-24 x 9/16	277	650927	Screw, 5/6-18 x 2-11/32
177	650925A	Carburetor Mounting Stud	285	34449A	Starter Cup
186	36009	Governor Link	287	650926	Screw, 8-32 x 21/64"
187B	36035	Carburetor Gasket/Air Baffle	290	34357	Fuel line
190	36013	Brake Lever Ass'y.	292	26460	Fuel Line Clamp
191A	36012	Brake Control Lever	299	650900	U Type Nut Clip
192	36016	Brake Control Lever Link	300	36066	Fuel Tank
193	36015	Brake Spring	301	35355	Fuel Cap
194	36014	Retaining Ring	305	36063	Oil Fill Tube
195	610973	Terminal Ass'y.	307	35499	O Ring
198	36017	Brake Control Lever Spring	308	36040	Fill Tube Clip
199	36018	Brake Lever Bushing	310	36147	Dipstick
202	36482	Compression Spring	346A	28763	Screw, 10-32 x 35/64"
203	31342	Compression Spring	347	650898A	Screw, 10-32 x 27/32"
204	651029	Screw, Torx T-10	350	36045	Primer
205	651030	Screw, Torx T-10	370A	36261	Lubrication Decal
215	36051	Control Knob	370B	36155	Control Decal
239	36048	Carburetor to Cleaner Gasket	380	632671A	Carburetor
240	36044B	Air Cleaner Body	390	590702*	Rewind Starter
243	650899	Screw, 10-32 x 2-3/32"	400	36062B	Gasket Set
245	36046	Air Cleaner Filter	416	36085	Spark Arrester Kit
250	36154	Air Cleaner Cover	417	650760	Screw, 8-32 x 3/8" (Optional)
251	650928	Lock Nut 1/4-20	900	0	Replacement Engine NONE
255	36110	Control Plate	900	0	Replacement S/B 750804, order from 71-999
256	650983	Screw, 8-32 x 21/64"			

* This engine could have been built with 590739 starter.

**CRAFTSMAN ENGINE NO. 143.975512 FOR
CRAFTSMAN 5.5 H.P. LAWN MOWER MODEL 247.370320**

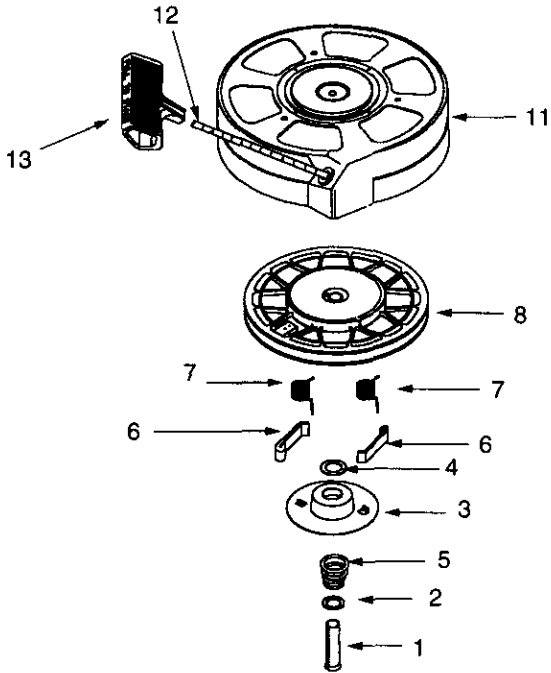
Carburetor No. 632671A



Key No.	Part No.	Description
1.	632539	Throttle Shaft & Lever Assembly
5	632593	Dust Seal
6	632541	Throttle Shutter
7	650506	Throttle Shutter Screw
25	632675	Float Bowl
25A	632701	Idle Restrictor
27	632544	Float Shaft
28	632543	Float
29	632548	Float Bowl to Body Gasket
30	632551	Inlet Needle, Seat & Seat Retainer
31	632637	Seat Retainer
32	632672	Bowl Drain Screw
33	632673	Bowl Drain Washer
36	632674	Main Nozzle Tube
37	632547	O Ring, Main Nozzle Tube
37A	632547	O Ring
38	632545	Spring, Main Nozzle Tube
38A	632545	Spring
39	632549	Float Bowl Retainer
40	632676	Main Fuel Jet
47	632554	Welch Plug, Idle Mixing Well

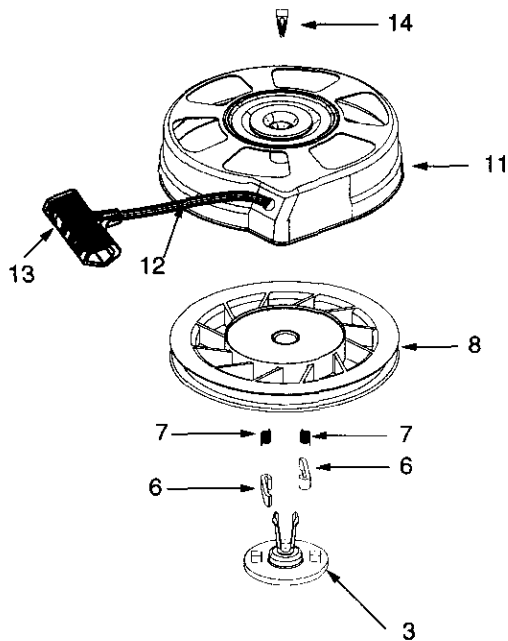
**CRAFTSMAN ENGINE NO. 143.975512 FOR
CRAFTSMAN 5.5 H.P. LAWN MOWER MODEL 247.370320**

Recoil Starter 590702



Key No.	Part No.	Description
--	590702	Recoil Starter
1	590599A	Spring Pin
2	590600	Washer
3	590696	Retainer
4	590601	Washer
5	590697	Brake Spring
6	590698	Starter Dog
7	590699	Dog Spring
8	590700	Pulley & Rewind Spring Ass'y.
11	590703	Starter Housing Ass'y. (40 degree grommet)
12	590535	Starter Rope (98" x 9/64" dia.)
13	590701	Starter Handle

Recoil Starter 590739



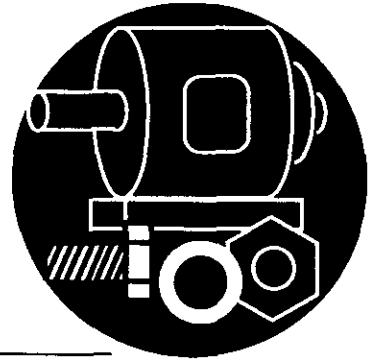
Key No.	Part No.	Description
--	590739	Rewind Starter
3	590740	Retainer
6	590616	Starter Dog
7	590617	Dog Spring
8	590618A	Pulley & Rewind Spring Ass'y.
11	590638	Starter Housing Ass'y (40 Degree Grommet)
12	590535	Starter Rope (98" X 9/64")
13	590701	Starter Handle
14	590741	Locking Tab

**For the repair or replacement parts you need
delivered directly to your home**

Call 7 am - 7 pm, 7 days a week

1-800-366-PART

(1-800-366-7278)



For in-home major brand repair service

Call 24 hours a day, 7 days a week

1-800-4-REPAIR

(1-800-473-7247)



**For the location of a
Sears Parts and Repair Center in your area**

Call 24 hours a day, 7 days a week

1-800-488-1222



**For information on purchasing a Sears
Maintenance Agreement or to inquire
about an existing Agreement**

call 9 am - 5 pm, Monday-Saturday

1-800-827-6655



SEARS

REPAIR SERVICES

America's Repair Specialists