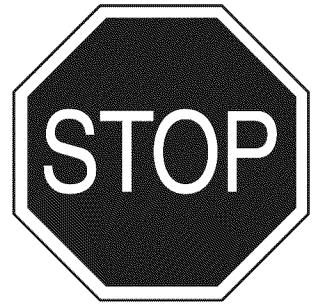


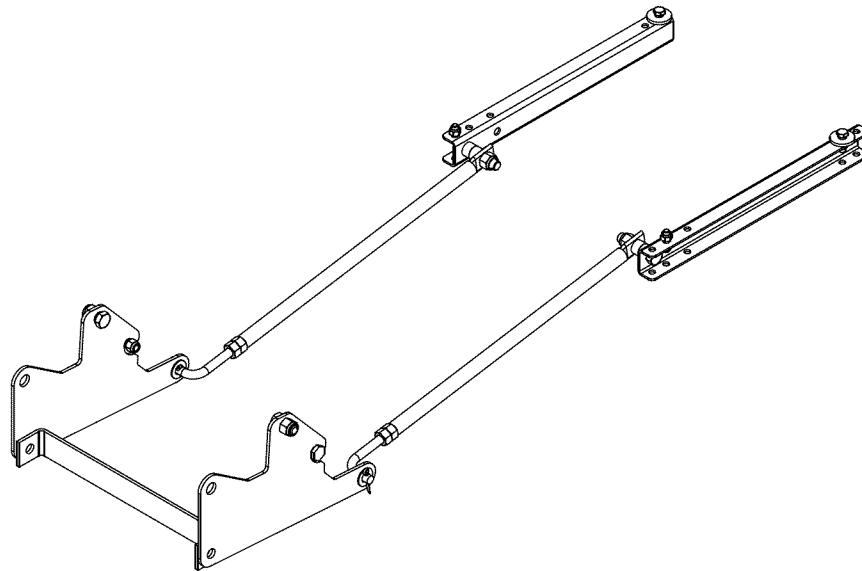
Operator's Manual



BLADE AND SCOOP KIT

DO NOT RETURN TO STORE
For Missing Parts or Assembly
Questions Call 1-866-576-8388

Model No. 486.24116



CAUTION:

Before using this product, read this manual and follow all Safety Rules and Operating Instructions.

- Safety
- Assembly
- Operation
- Maintenance
- Parts

Sears Brands Management Corporation, Hoffman Estates, IL 60179 U.S.A.
www.sears.com/craftsman

TABLE OF CONTENTS

WARRANTY	2
CARTON CONTENTS.....	3
HARDWARE PACKAGE	3
ASSEMBLY	4
REPAIR PARTS ILLUSTRATION.....	7
PARTS ORDERING/SERVICE	BACK PAGE

WARRANTY

CRAFTSMAN FULL WARRANTY

When operated and maintained according to all supplied instructions, if this Craftsman product fails due to a defect in material or workmanship within one year from the date of purchase, return it to any Sears store or other Craftsman outlet in the United States for free replacement.

This warranty applies for only 90 days from the date of purchase if this product is ever used for commercial or rental purposes.

This warranty does not include items considered to be expendable parts that can wear out from normal use within the warranty period.

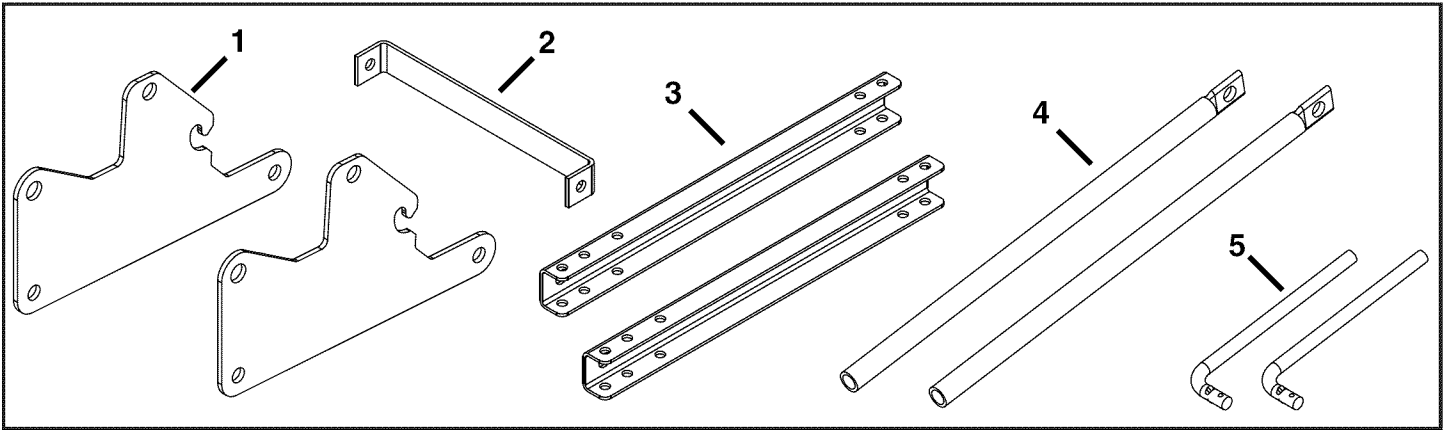
This warranty gives you specific legal rights, and you may also have other rights which vary from state to state.

Sears, Roebuck and Co., Hoffman Estates, IL 60179

DO NOT RETURN TO STORE for Missing Parts or Assembly Questions
Call 1-866-576-8388 Attachment Hotline

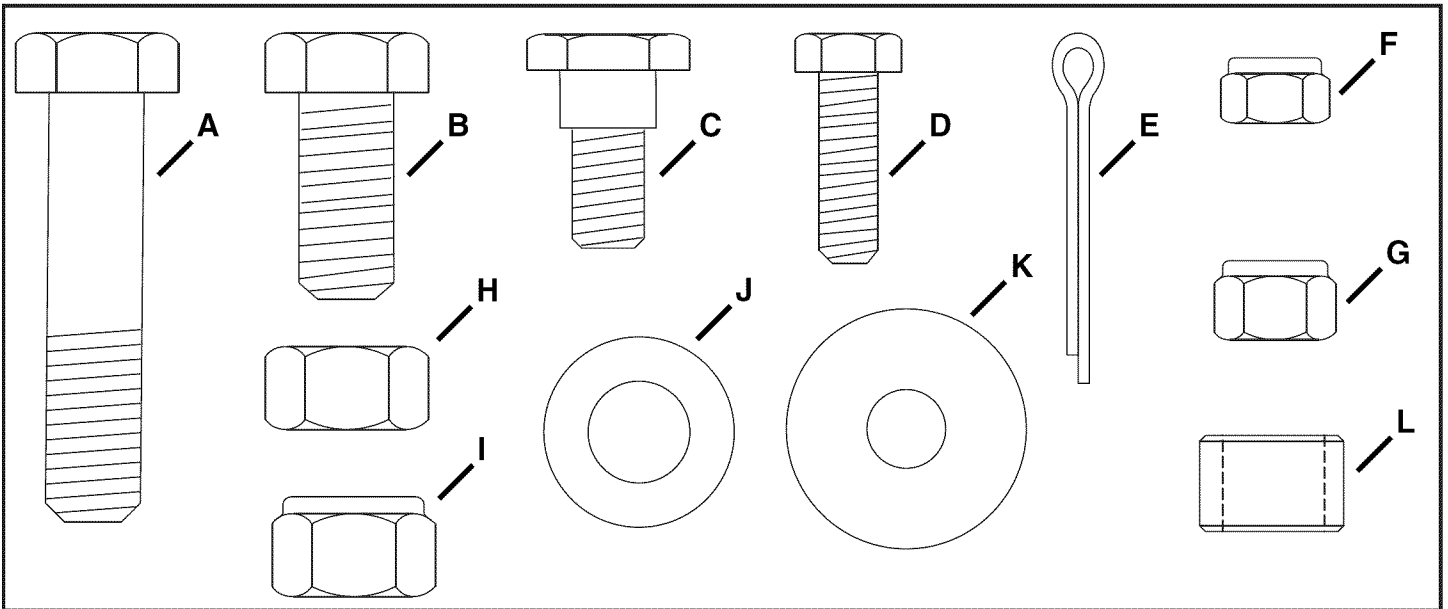
<p>The model number and serial numbers will be found on a decal attached to the [product name].</p> <p>You should record both the serial number and the date of purchase and keep in a safe place for future reference.</p>	<table><tr><td>MODEL NUMBER:</td><td>486.24116</td></tr><tr><td>SERIAL NUMBER:</td><td>_____</td></tr><tr><td>DATE OF PURCHASE:</td><td>_____</td></tr></table>	MODEL NUMBER:	486.24116	SERIAL NUMBER:	_____	DATE OF PURCHASE:	_____
MODEL NUMBER:	486.24116						
SERIAL NUMBER:	_____						
DATE OF PURCHASE:	_____						

CARTON CONTENTS



REF	PART NO.	QTY	DESCRIPTION	REF	PART NO.	QTY	DESCRIPTION
1	27008	2	Mount Bracket	4	41347	2	Long Support Tube
2	25722	1	Frame Brace	5	41346	2	Support Link
3	27009	2	Channel Bracket				

HARDWARE PACKAGE



REF	PART NO.	QTY	DESCRIPTION	REF	PART NO.	QTY	DESCRIPTION
A	HA180183	2	Hex Bolt, 1/2 x 2-1/4"	G	HA21362	2	Nylock Nut, 3/8"
B	710-0865	2	Hex Bolt, 1/2-13 x 1"	H	712-0206	4	Hex Nut, 1/2"
C	48106	2	Shoulder Bolt, 3/8-16 x .9"	I	712-3083	4	Nylock Nut, 1/2"
D	43063	4	Hex Bolt, 5/16-18 x 1"	J	R19171616	4	Washer, .531 x 1 x .059"
E	43010	2	Cotter Pin, 1/8 x 1-1/4"	K	736-0247	2	Washer, .41 x 1.25 x .156"
F	47810	4	Nylock Nut, 5/16"	L	24817	4	Spacer, .53 x .75 x .5"

ASSEMBLY

TOOLS REQUIRED FOR ASSEMBLY

- (2) 1/2" Wrenches
- (1) 9/16" Wrench
- (2) 3/4" Wrenches
- (1) Pliers

IF YOU HAVE A 71-24414 DOZER BLADE:

Use the instructions in this manual in place of the instructions on pages 6 and 7 in the blade manual.

IF YOU HAVE A 71-248474 FRONT SCOOP:

Use the instructions in this manual in place of the instructions on pages 13 and 14 in the scoop manual.



CAUTION! Muffler is hot! Allow engine and muffler to cool down before proceeding with kit installation.

STEP 1: (NOT SHOWN)

- Remove the hood and the mower deck following the instructions in your tractor owner's manual.

STEP 2: (SEE FIGURE 1)

- Remove the heat shield from the front of the tractor by removing the two screws shown from each side of the tractor frame.

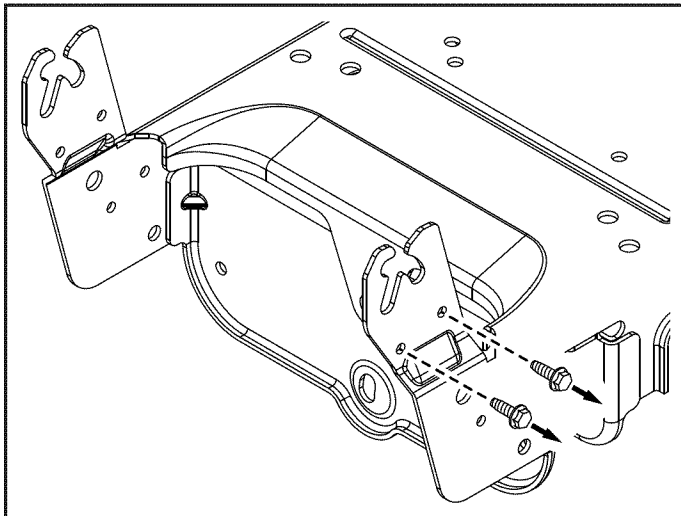


FIGURE 1

STEP 3: (SEE FIGURE 2)

- Attach a channel bracket to the right side of the tractor frame behind the front wheels using two 5/16 x 1" hex bolts, 5/16" nylock nuts, and one large washer.

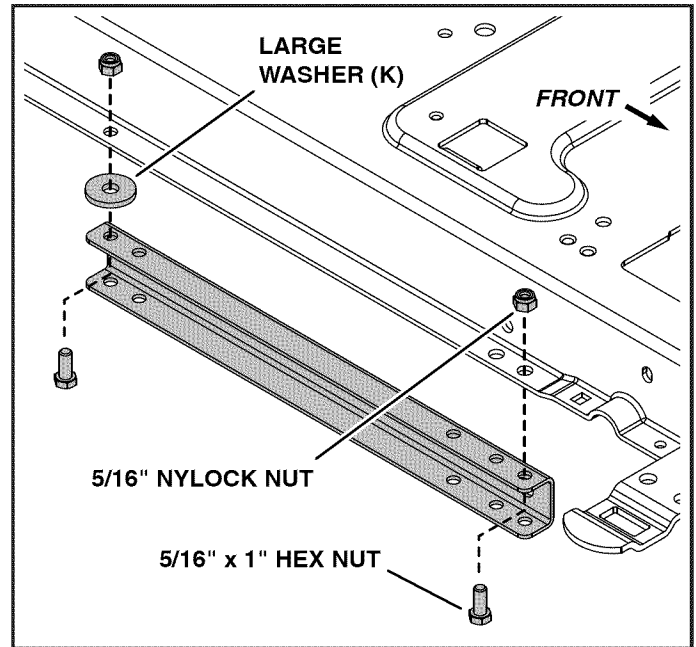


FIGURE 2

STEP 4: (SEE FIGURE 3)

- Attach a channel bracket to the left side of the tractor frame behind the front wheels using two 5/16 x 1" hex bolts, 5/16" nylock nuts, and one large washer.

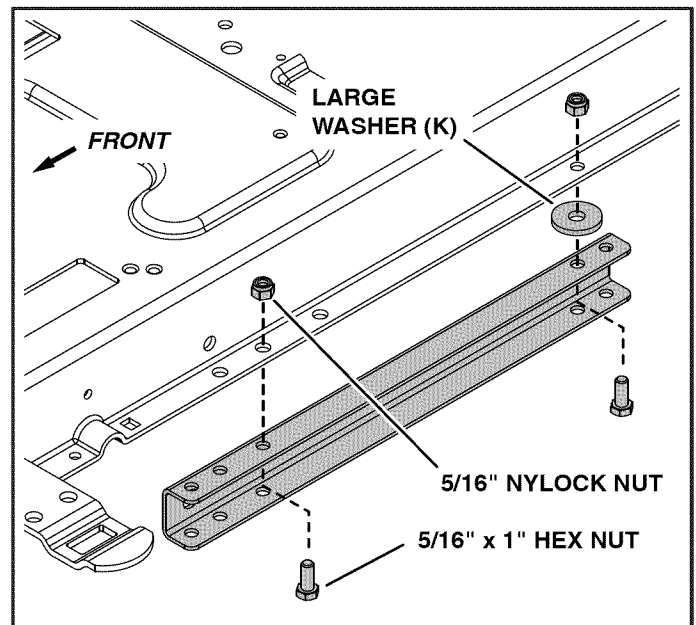


FIGURE 3

STEP 5: (SEE FIGURE 4)

- Assemble a shoulder bolt and a 3/8" nylock nut to the hole shown on each side of the tractor frame.

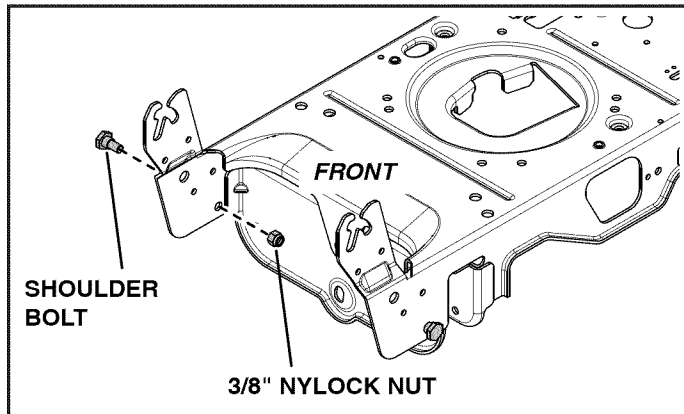


FIGURE 4

STEP 7: (SEE FIGURE 6)

- Attach a support tube to the inside of each channel bracket using a 1/2" x 2-1/4" hex bolt, two spacers and a 1/2" nylock nut. **Do not tighten yet.**

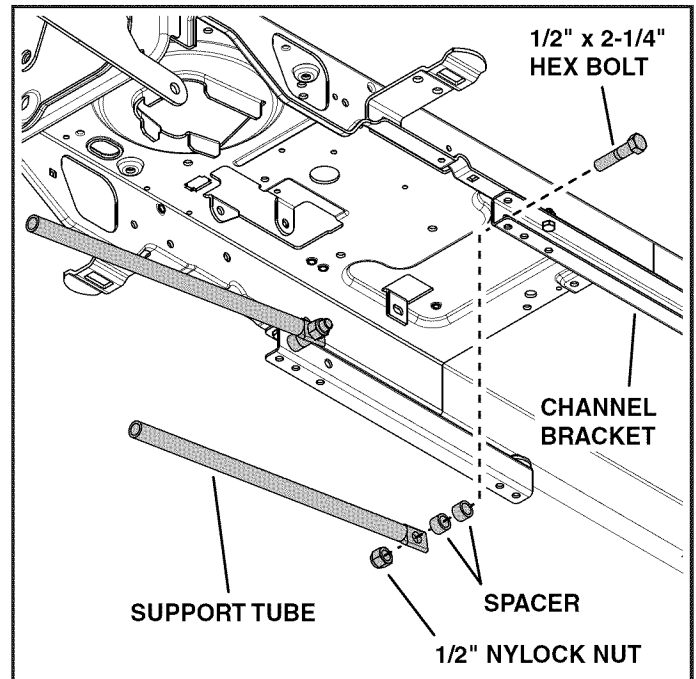


FIGURE 6

STEP 6: (SEE FIGURE 5)

- Place a mount bracket onto each shoulder bolt and attach it to the tractor frame using a 1/2" x 1" hex bolt and a 1/2" nylock nut.

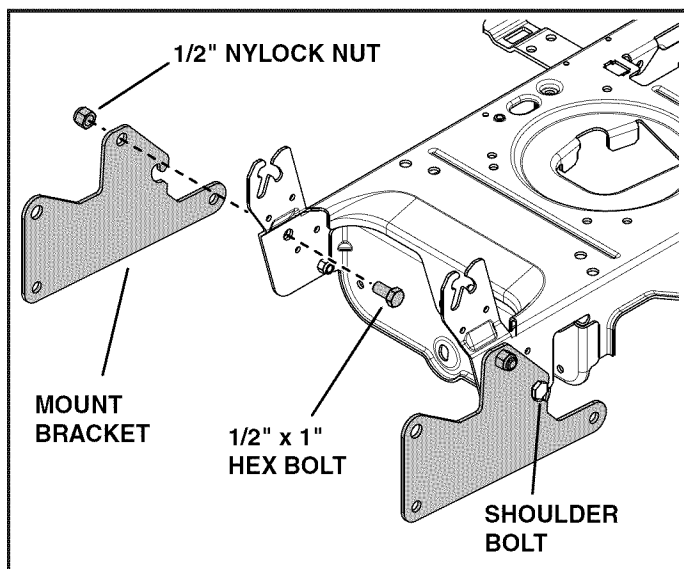


FIGURE 5

STEP 8: (SEE FIGURE 7)

- Assemble two 1/2" hex nuts all the way onto the threads of each support link.

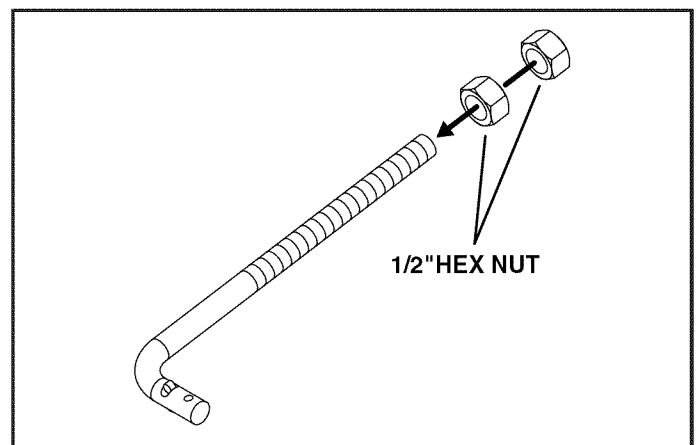


FIGURE 7

STEP 9: (SEE FIGURE 8)

- Insert a support link into a support tube. Assemble a small washer onto the other end of the support link and then insert the link into a mount bracket. Assemble another small washer and a 1/8" cotter pin to the end of the support link. Repeat for other side.

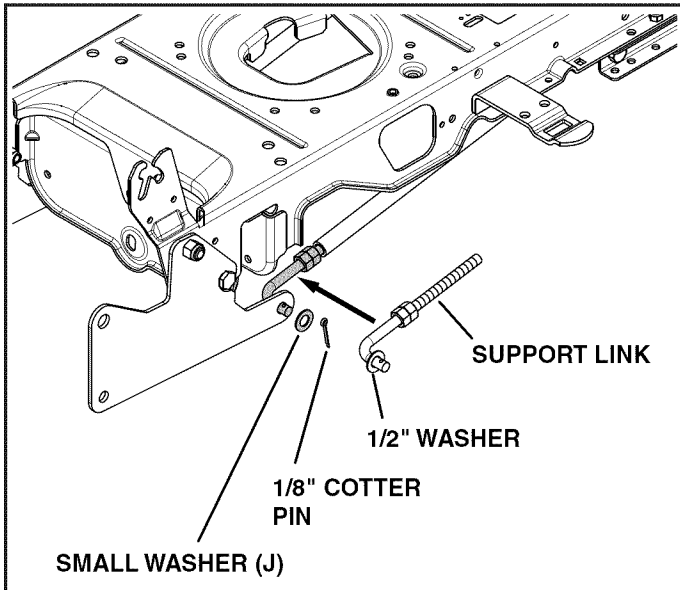


FIGURE 8

STEP 11: (SEE FIGURE 10)

- Attach the frame brace between the mount brackets using the hardware provided with your scoop or blade. (Refer to step 4 in the blade manual or step 21 in the scoop manual.)

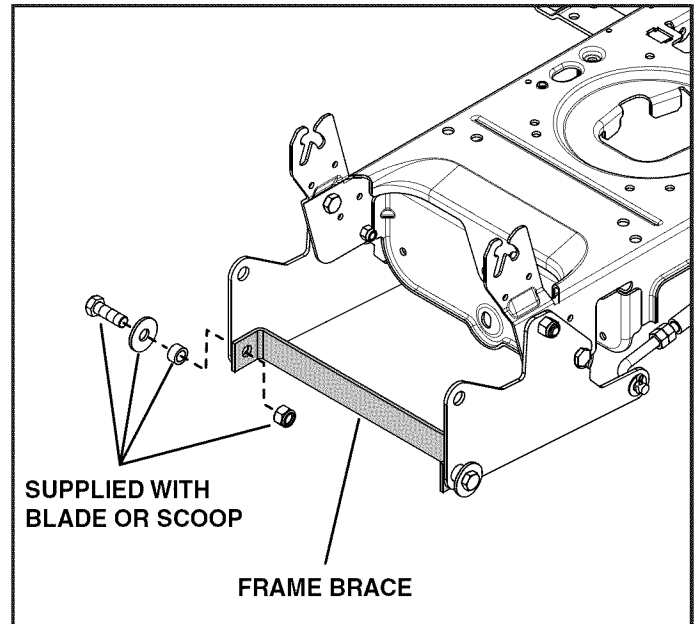


FIGURE 10

STEP 10: (SEE FIGURE 9)

- Tighten the 1/2" nylock nuts that fasten the rear of the support tubes to the channel brackets.
- Screw the 1/2" hex nuts on the support links back against the front of the support tubes until all slack is gone. Tighten the nuts against each other to lock them in place.

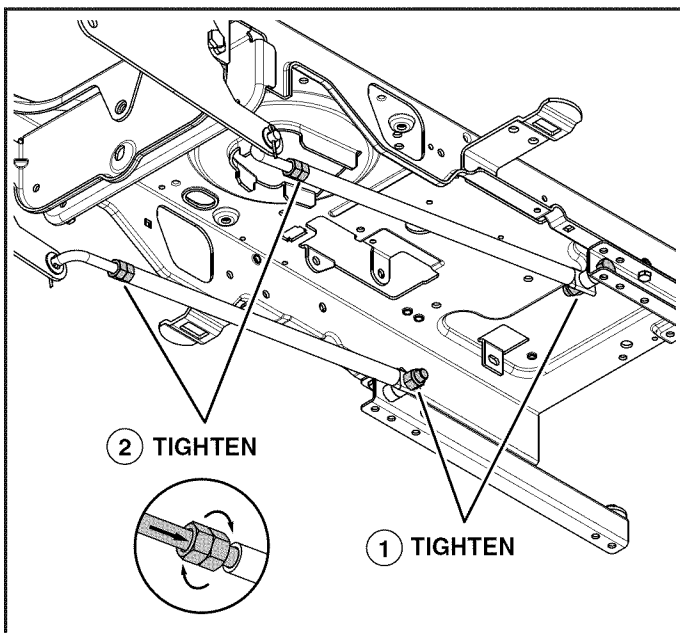


FIGURE 9

STEP 12: (SEE FIGURE 1)

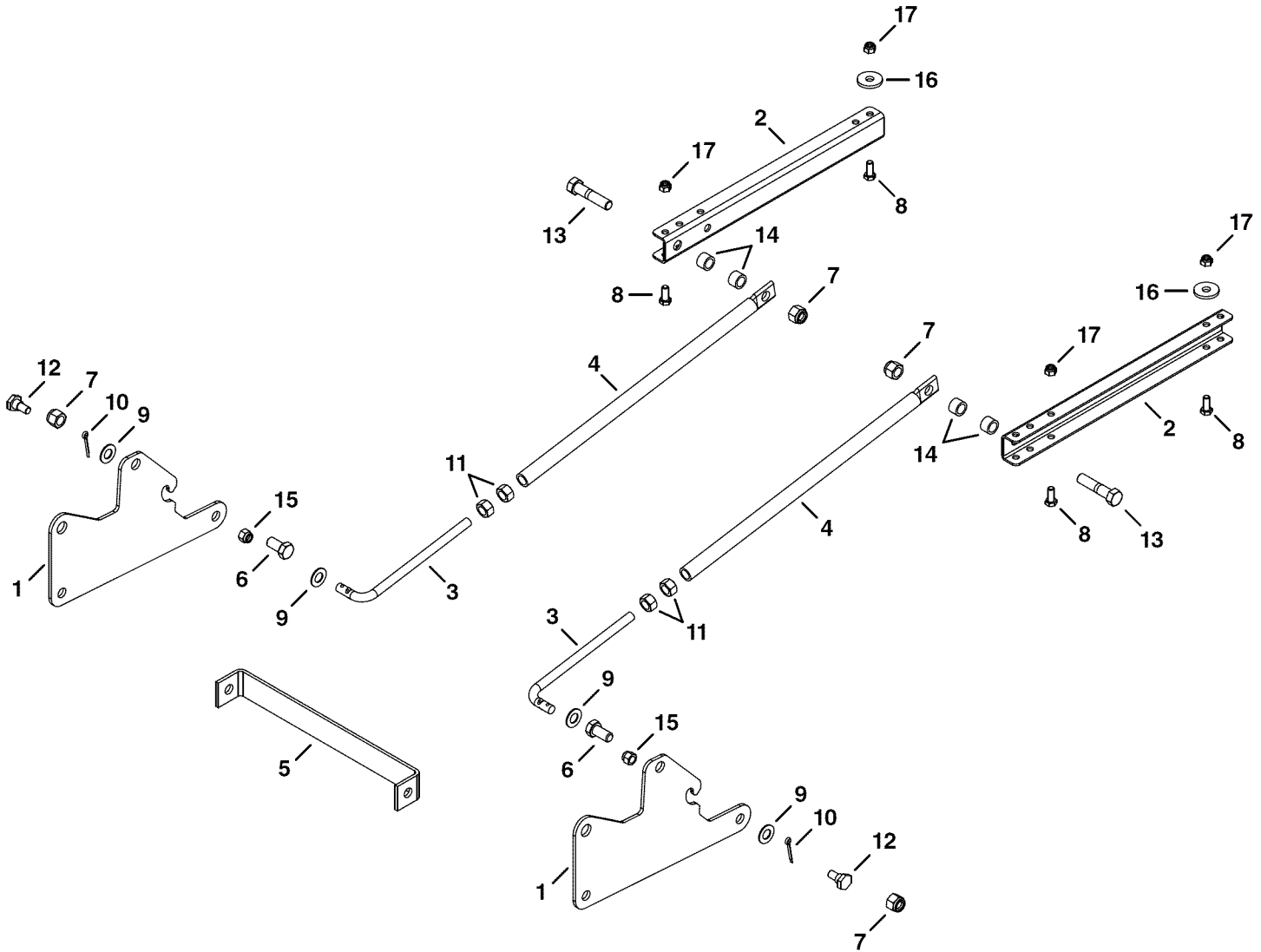
- Replace the heat shield that was removed in step 2.

STEP 13:

- Return to page 8 in the blade manual or page 15 in the scoop manual to continue assembly.

REPAIR PARTS ILLUSTRATION

REPAIR PARTS FOR MODEL 486.24116



REF	PART NO.	QTY	DESCRIPTION	REF	PART NO.	QTY	DESCRIPTION
1	27008	2	Mount Bracket	10	43010	2	Cotter Pin, 1/8 x 1-1/4"
2	27009	2	Channel Bracket	11	712-0206	4	Hex Nut, 1/2"
3	41346	2	Support Link	12	48106	2	Shoulder Bolt, 3/8-16 x .9"
4	41347	2	Long Support Tube	13	HA180183	2	Hex Bolt, 1/2 x 2-1/4"
5	25722	1	Frame Brace	14	24817	4	Spacer, .53 x .75 x .5"
6	710-0865	2	Hex Bolt, 1/2-13 x 1"	15	HA21362	2	Nylock Nut, 3/8"
7	712-3083	4	Nylock Nut, 1/2"	16	736-0247	2	Washer, .41 x 1.25 x .156"
8	43063	4	Hex Bolt, 5/16-18 x 1"	17	47810	4	Nylock Nut, 5/16"
9	R19171616	4	Washer, .531 x 1 x .059"		41375	1	Owners Manual

Get it fixed, at your home or ours!

Your Home

For expert troubleshooting and home solutions advice:

manage my home

www.managemyhome.com

For repair – **in your home** – of **all** major brand appliances, lawn and garden equipment, or heating and cooling systems, **no matter who made it, no matter who sold it!**

For the replacement parts, accessories and owner's manuals that you need to do-it-yourself.

For Sears professional installation of home appliances and items like garage door openers and water heaters.

1-800-4-MY-HOME[®] (1-800-469-4663)

Call anytime, day or night (U.S.A. and Canada)

www.sears.com www.sears.ca

Our Home

For repair of carry-in items like vacuums, lawn equipment, and electronics, call anytime for the location of your nearest

Sears Parts & Repair Service Center

1-800-488-1222 (U.S.A.)

www.sears.com

1-800-469-4663 (Canada)

www.sears.ca

To purchase a protection agreement on a product serviced by Sears:

1-800-827-6655 (U.S.A.)

1-800-361-6665 (Canada)

Para pedir servicio de reparación a domicilio, y para ordenar piezas:

1-888-SU-HOGAR[®]

(1-888-784-6427)

Au Canada pour service en français:

1-800-LE-FOYER^{MC}

(1-800-533-6937)

www.sears.ca



© Registered Trademark / TM Trademark / SM Service Mark of Sears Brands, LLC

© Marca Registrada / TM Marca de Fábrica / SM Marca de Servicio de Sears Brands, LLC

^{MC} Marque de commerce / ^{MD} Marque déposée de Sears Brands, LLC

© Sears Brands, LLC