

APG3010



Owner's Manual  
**2000 WATT  
GENERATOR**



---

# 2000W Generator

---

## Table of Contents

---

Topic	Page
Limited Warranty	3
Safety Guidelines	5
General Precautions	6
Battery	15
Assembly	16
Operation	17
Inspection, Cleaning and Maintenance	21
Installation	22
Specifications	24
General Parts Listings	25

---



**WARNING! READ AND UNDERSTAND ALL SAFETY PRECAUTIONS IN THIS MANUAL BEFORE OPERATING. FAILURE TO COMPLY WITH INSTRUCTIONS IN THIS MANUAL COULD RESULT IN PERSONAL INJURY, PROPERTY DAMAGE, AND/ OR VOIDING OF YOUR WARRANTY. ALL POWER AMERICA WILL NOT BE LIABLE FOR ANY DAMAGE BECAUSE OF FAILURE TO FOLLOW THESE INSTRUCTIONS.**

## Limited Warranty

All-Power America warrants to the original purchaser who uses the product in a consumer application (personal, residential or household usage) that all products covered under this warranty are free from defects in material and workmanship for one year from the date of purchase. All products covered by this limited warranty which are used in commercial applications (i.e. income producing) are warranted to be free of defects in material and workmanship for 90 days from the date of original purchase. Products covered under this warranty include air compressors, air tools, service parts, pressure washers and generators.

All-Power America will repair or replace, at All-Power America's sole option, products or components which have failed within the warranty period. Service will be scheduled according to the normal work flow and business hours at the service center location, and the availability of replacement parts. All decisions of All-Power America with regard to this limited warranty shall be final.

This warranty gives you specific legal rights, and you may also have other rights which vary from state to state.

### RESPONSIBILITY OF ORIGINAL PURCHASER (initial User):

To process a warranty claim on this product, DO NOT return item to the retailer. The product must be evaluated by an Authorized Warranty Service Center. For the location of the nearest Authorized Warranty Service Center contact the retailer or place of purchase.

### **Retain original cash register sales receipt as proof of purchase for warranty to work.**

Use reasonable care in the operation and maintenance of the product as described in the Owner's Manual(s).

Deliver or ship the product to the Authorized Warranty Service Center. Freight costs, if any must be paid by the purchaser.

If the purchaser does not receive satisfactory results from the Authorized Warranty Service Center, the purchaser should contact All-Power America.

---

# 2000W Generator

---

## Limited Warranty (cont'd)

THIS WARRANTY DOES NOT COVER:

- Merchandise sold as reconditioned, used as rental equipment, or floor or display models.
- Merchandise that has become damaged or inoperative because of ordinary wear, misuse, cold, heat, rain, excessive humidity, freeze damage, use of improper chemicals, negligence, accident, failure to operate the product in accordance with the instructions provided in the Owner's Manual(s) supplied with the product, improper maintenance, the use of accessories or attachments not recommended by All-Power America, or unauthorized repair or alterations.
- Repair and transportation costs of merchandise determine not to be defective.
- Costs associated with assembly, required oil, adjustments or other installation and start-up costs.
- Expendable parts or accessories supplied with the product which are expected to become inoperative or unusable after a reasonable period of use.
- Merchandise sold by All-Power America which has been manufactured by and identified as the product of another company, such as gasoline engines. The product manufacturer's warranty, if any, will apply.
- ANY INCIDENTAL, INDIRECT OR CONSEQUENTIAL LOSS, DAMAGE, OR EXPENSE THAT MAY RESULT FROM ANY DEFECTS, FAILURE OR MALFUNCTION OF THE PRODUCT IS NOT COVERED BY THIS WARRANTY. Some states do not allow the exclusion, so it may not apply to you.
- IMPLIED WARRANTIES, INCLUDING THOSE OF MERCHANTABILITY OR FITNESS FOR A PARTICULAR PURPOSE, ARE LIMITED TO ONE YEAR FROM THE DATE OF ORIGINAL PURCHASE. Some states do not allow limitations on how long an implied warranty lasts, so the above limitations may not apply to you.

## Safety Guidelines - Definitions

This manual contains important information that you need to know and understand in order to protect YOUR SAFETY and to PREVENT EQUIPMENT PROBLEMS. The following symbols help you recognize this information. Please read the manual and pay attention to these sections.

### Save These Important Safety Instructions!

Read and understand all of these safety instructions. Be sure to retain them for future use.



**WARNING! WARNINGS INDICATE A CERTAINTY OR STRONG POSSIBILITY OF PERSONAL INJURY OR DEATH IF INSTRUCTIONS ARE NOT FOLLOWED.**



**CAUTION: CAUTIONS INDICATE A POSSIBILITY OF EQUIPMENT DAMAGE IF INSTRUCTIONS ARE NOT FOLLOWED.**



**NOTE: NOTES GIVE HELPFUL INFORMATION**



**WARNING! IMPROPER OPERATION OR MAINTENANCE OF THIS PRODUCT COULD RESULT IN SERIOUS INJURY AND PROPERTY DAMAGE. READ AND UNDERSTAND ALL WARNINGS AND OPERATING INSTRUCTIONS BEFORE USING THIS EQUIPMENT. WHEN USING AIR TOOLS, BASIC SAFETY PRECAUTIONS SHOULD ALWAYS BE FOLLOWED TO REDUCE THE RISK OF PERSONAL INJURY.**

---

# 2000W Generator

---

## General Precautions



**WARNING! FAILURE TO FOLLOW THESE INSTRUCTIONS CAN RESULT IN SEVERE INJURY OR DEATH.**



**CAUTION: FAILURE TO FOLLOW THESE INSTRUCTIONS CAN ALSO RESULT IN DAMAGE TO THE TOOL AND/OR THE ITEM YOU ARE WORKING ON.**

## Carbon Monoxide

When this tool is running, ensure that the area is well ventilated. Never run the engine in an enclosed area. Run the engine in an open area or with an exhaust evacuation system in an enclosed area.



**WARNING! THE EXHAUST CONTAINS POISONOUS CARBON MONOXIDE GAS THAT CAN CAUSE LOSS OF CONSCIOUSNESS AND MAY LEAD TO DEATH.**

## Gasoline and Oil

This product requires oil and fuel. Attempting to start the engine without oil will ruin the engine and void the warranty. Work in well ventilated area. Keep cigarettes, flames or sparks away from the work area or where gasoline is stored.



**WARNING! GASOLINE IS EXTREMELY FLAMMABLE AND IS EXPLOSIVE UNDER CERTAIN CONDITIONS. KEEP OUT OF REACH OF CHILDREN.**

- Gasoline fuel and fumes are flammable and potentially explosive. Use proper fuel storage and handling procedures. Always have multiple ABC class fire extinguishers nearby.
- Keep the generator and surrounding area clean at all times.
- Fuel or oil spills must be cleaned up immediately. Dispose of fluids and cleaning materials as per any local, state, or federal codes and regulations. Store oily rags in a covered metal container.
- Never store fuel or other flammable materials near the generator.

## General Precautions (cont'd)

### Gasoline and Oil (cont'd)

- Do not smoke, or allow sparks, flames or other sources of ignition around the engine and fuel tank. Fuel vapors are explosive.
- Keep grounded conductive objects, such as tools, away from exposed, live electrical parts and connections to avoid sparking or arcing. These events could ignite fumes or vapors.
- Do not refill the fuel tank while the engine is running or while the engine is still hot. Do not operate the generator with known leaks in the fuel system
- Excessive buildup of unburned fuel gases in the exhaust system can create a potentially explosive condition. This buildup can occur after repeated failed start attempts, valve testing, or hot engine shutdown. If this occurs, open exhaust system drain plugs, if equipped, and allow the gases to dissipate before attempting to restart the generator.
- Use only engine manufacturer recommended fuel and oil.

## Hot Components



**WARNING! ENGINE AND EXHAUST SYSTEM PARTS BECOME VERY HOT AND REMAIN HOT FOR SOME TIME AFTER THE ENGINE IS RUN. WEAR INSULATED GLOVES OR WAIT UNTIL THE ENGINE AND EXHAUST SYSTEM HAVE COOLED BEFORE HANDLING THESE PARTS.**

## Power Output

This generator is not designed to power sensitive electronic equipment (including computers and medical devices) without the addition of an approved line conditioner, which is sold separately.



**CAUTION: ATTEMPTING TO POWER SENSITIVE ELECTRONIC EQUIPMENT WITHOUT THE USE OF AN APPROVED LINE CONDITIONER MAY CAUSE DAMAGE TO THE EQUIPMENT. ALL POWER AMERICA IS NOT RESPONSIBLE FOR ANY DIRECT OR INDIRECT DAMAGE CAUSED BY FAILURE TO USE AN APPROVED LINE CONDITIONER.**

---

# 2000W Generator

---

## General Precautions (cont'd)

### Work Area

- Keep your work area clean and well lit. Cluttered benches and dark areas invite accidents.
- Do not operate power tools in explosive atmospheres, such as in the presence of flammable liquids, gases, or dust. Generators create sparks which may ignite the dust or fumes.
- Keep bystanders, children, and visitors away while operating a generator. Provide barriers or shields as needed.

### Electrical Safety

- Grounded tools must be plugged into an outlet properly installed and grounded in accordance with all codes and ordinances. Never remove the grounding prong or modify the plug in any way. Do not use any adapter plugs.
- Grounding provides a low-resistance path to carry electricity away from the user in the event of an electrical malfunction.
- Double insulated tools are equipped with a polarized plug where one blade is wider than the other. This plug fits in a polarized outlet only one way. If the plug does not fit fully in the outlet, reverse the plug. If it still does not fit, contact a qualified electrician to install a polarized outlet. Do not change the plug in any way. Double insulation eliminates the need for the three-wire grounded power cord and grounded power supply system.
- Avoid body contact with grounded surfaces such as pipes, radiators, ranges, and refrigerators. There is an increased risk of electric shock if your body is grounded.
- Do not expose generator to rain or wet conditions. Water entering a generator will increase the risk of electric shock.
- Do not abuse the power cord. Keep power cords away from heat, oil, sharp edges, or moving parts. Replace damaged power cords immediately. Damaged power cords increase the risk of electric shock.
- When operating a power tool outside, use an outdoor extension cord marked "W-A" or "W". These extension cords are rated for outdoor use, and reduce the risk of electric shock.





## General Precautions (cont'd)

### Electrical Safety (cont'd)

- All connections and conduits from the generator to the load must only be installed by trained and licensed electricians, and in compliance with all relevant local, state, and federal electrical codes and standards, and other regulations where applicable.
- The generator must be earth-grounded for fixed installations in accordance with all relevant electrical codes and standards before operation.
- Do not attempt to connect or disconnect load connections while standing in water, or on wet or soggy ground.
- Do not touch electrically energized parts of the generator and interconnecting cables or conductors with any part of the body, or with any non-insulated conductive object.
- Connect the generator only to a load or electrical system (120 volt) that is compatible with the electrical characteristics and rated capacities of the generator.
- Before servicing equipment powered by the generator, disconnect the equipment from its power input.
- Keep all electrical equipment clean and dry. Replace any wiring where the insulation is cracked, cut abraded or otherwise degraded. Replace terminals that are worn, discolored, or corroded. Keep terminals clean and tight.
- Insulate all connections and disconnected wires.
- Guard against electric shock. Prevent body contact with grounded surfaces such as pipes, radiators, ranges, and refrigerator enclosures.

### Personal Safety

- Stay alert. Watch what you are doing, and use common sense when operating a generator. Do not use generator while tired or under the influence of drugs, alcohol, or medication. A moment of inattention while operating generators may result in serious personal injury.
- Dress properly. Do not wear loose clothing or jewelry. Contain long hair. Keep your hair, clothing, and gloves away from moving parts. Loose clothes, jewelry, or long hair can be caught in moving parts.

---

# 2000W Generator

---

## General Precautions (cont'd)

### Personal Safety (cont'd)

- Avoid accidental starting. Make sure the power switch is in its "OFF" position, and disconnect the spark plug wire when not in use.
- Remove adjusting keys or wrenches before turning the generator on. A wrench or a key that is left attached to a rotating part of the generator may result in personal injury.
- Do not overreach. Keep proper footing and balance at all times.
- Use safety equipment. Always wear eye protection. Wear ANSI approved safety impact eye goggles. Dust mask, non-skid safety shoes, hard hat, or hearing protection must be used for appropriate conditions.
- Do not force the generator. Use the correct generator for your application. The correct generator will do the job better and safer at the rate for which it is designed.
- Do not use the generator if the power switch does not turn it on or off. Any generator that cannot be controlled with the power switch is dangerous and must be replaced.

### Generator Use and Care

Make sure the power switch is in its "OFF" position and disconnect the spark plug wire before making any adjustment, changing accessories, or storing the generator. Such preventive safety measures reduce the risk of starting the generator accidentally.

Store idle generators out of reach of children and other untrained persons. Generators are dangerous in the hands of untrained users.

Maintain generators with care. Do not use damaged generator. Tag damaged generators "Do not use" until repaired.

Check for misalignment or binding of moving parts, breakage of parts, and any other condition that may affect the generator's operation. If damaged, have the generator serviced before using. Many accidents are caused by poorly maintained generators.

Use only accessories that are recommended by the manufacturer for your model. Accessories that may be suitable for one generator may become hazardous when used on another generator.

## General Precautions (cont'd)

### Servicing

Maintain labels and name plates on the generator and engine. These carry important information. If unreadable or missing, contact All Power America immediately for a replacement.

Generator service must be performed only qualified repair personnel. Service or maintenance performed by unqualified personnel could result in a risk of injury.

When servicing a generator, use only identical replacement parts. Follow all appropriate instructions in this manual. Use of unauthorized parts or failure to follow maintenance instructions may create a risk of electric shock or injury.

### Heart Pacemakers



**WARNING! PEOPLE WITH PACEMAKERS SHOULD CONSULT THEIR PHYSICIAN(S) BEFORE USING THIS PRODUCT. ELECTROMAGNETIC FIELDS IN CLOSE PROXIMITY TO A HEART PACEMAKER COULD CAUSE INTERFERENCE TO OR FAILURE OF THE PACEMAKER.**

### Installation

- Ensure installation meets all applicable safety, and local and national electrical codes. Have installation performed by a qualified, licensed electrician and building contractor.
- All electrical work, including the earth-ground connection, should be completed by a licensed electrician.
- Any separate fuel storage or generator supply facility must be built or installed in full compliance with all relevant local, state, and federal regulations.
- It is recommended to use the generator only in well ventilated outdoor areas. A running gasoline engine will generate carbon monoxide, a colorless, odorless gas that, if inhaled, can cause serious injury or death. If the generator is installed indoors, exhaust fumes must be piped out of the building using leak-free, heat resistant piping. Pipes and silencer should not use any flammable materials, nor should they be installed near the same. Generator exhaust fumes must be within legal limits and installation must always meet local building codes.

---

# 2000W Generator

---

## General Precautions (cont'd)

### Installation (cont'd)

- If the generator is installed outdoors, it must be weatherproofed and should be soundproofed. It should not be run outdoors without protection to the generator and wiring conduit.
- The generator weighs 62lbs. Two or more people should assist when moving or lifting this product. Never lift the generator using the engine or alternator lifting lugs. Connect lifting equipment to the frame of the generator
- Before lifting the generator, ensure the lift rigging and supporting structure are in good condition, and are rated to lift such a load.
- Keep all personnel away from the suspended generator during relocating.
- The supporting floor/ground surface should be level and strong enough to safely hold the weight of the generator. If the floor/grounded surface is not level, strong cross members should be placed under the full length of the generator frame at its low side.
- Install sound-and weather-proofing only when it is not raining or snowing to avoid trapping moisture within the generator's area.

### Mechanical

- Always make sure the power switch is in its "OFF" position. Disconnect the spark plug wire, and allow the engine to completely cool before carrying out maintenance.
- Check for damaged parts. Before using the generator, any part that appears damaged should be carefully checked to determine that it will operate properly and perform its intended function. Check for alignment and binding of moving parts, any broken parts or mounting fixtures, and any other condition that may affect proper operation technician.
- The generator is designed with guards for protection from moving parts. In any case, care must still be taken to protect personnel and equipment from other mechanical hazards when working around the generator.

## General Precautions (cont'd)

### Mechanical (cont'd)

- Do not operate the generator with safety guards removed. While the generator is running, do not attempt to reach around the safety guard for maintenance or any other reason.
- Keep hands, arms, long hair, loose clothing, and jewelry away from moving parts. Be aware that when engine parts are moving fast they cannot be seen clearly.
- Keep access doors on enclosures closed and locked when access is not required.
- When working on or around the generator always wear protective clothing including ANSI approved safety gloves, safety eye goggles, and safety hat.
- Do not alter or adjust any part of the generator that is assembled and supplied by the manufacturer.
- Always follow and complete scheduled engine and generator maintenance.

### Chemicals

- Avoid contact with hot fuel, oil, exhaust fumes, and hot solid surfaces.
- Avoid body contact with fuels, oils, and lubricants used in the generator. If swallowed, seek medical treatment immediately. Do not induce vomiting if fuel is swallowed. For skin contact, immediately wash with soap and water. For eye contact, immediately flush eyes with clean water and seek medical attention.

### Noise

- Prolonged exposure to noise levels above 85 DBA is hazardous to hearing. Always wear ANSI approved ear protection when operating or working around the generator when it is running.

---

# 2000W Generator

---

## General Precautions (cont'd)

### Extension Cord

If an extension cord (not included) is used, make sure to use only UL approved cords having the correct gauge and length according to the following table:

Nameplate Amps (@ full load)	Cord Lengths			
	0'-50'	50'-100'	100'-150'	150'-200'
0 - 5	16	16	12	12
5.1 - 8	16	14	10	-
8.1 - 12	14	12	-	-
12.1 - 15	12	10	-	-
15 - 20	10	10	-	-

---

## Battery

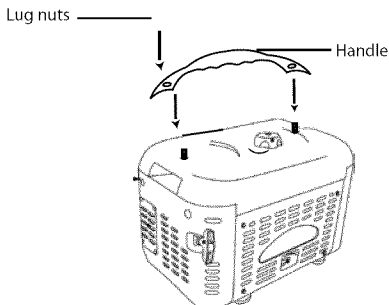
This product does not need a battery.

---

# 2000W Generator

---

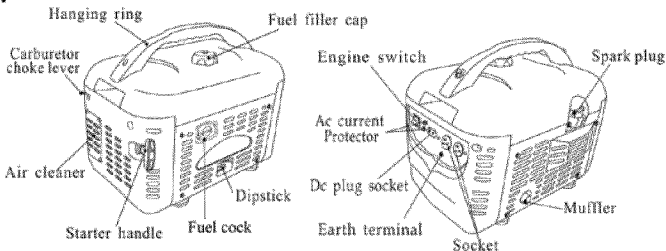
## Assembly



1. Place handle in pre-installed bolts.
2. Screw in lug nuts & tighten till secured.



## Operation



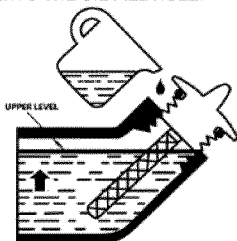
**NOTE: THE PARTS LISTED ABOVE ARE HELPFUL FOR LOCATING THE CONTROLS MENTIONED BELOW.**



**CAUTION: PRIOR TO FIRST USING THE GENERATOR, THE ENGINE MUST BE FILLED HIGH QUALITY SAE 10W-30 GRADE ENGINE OIL. TO DO SO, UNSCREW AND REMOVE THE ENGINE'S OIL DIPSTICK LOCATED AT THE BOTTOM OF THE ENGINE CRANKCASE. FILL THE ENGINE'S CRANKCASE UNTIL THE OIL LEVEL IS LEVEL WITH THE UPPER MARKED LINE ON THE DIPSTICK. THEN, SCREW THE DIPSTICK BACK INTO THE OIL FILL HOLE.**

### Before Starting the Generator

1. Check that the engine power switch is in its "OFF" position (see Oil Picture)
2. Before the first use, remove the fuel tank cap and fill the fuel tank with unleaded gasoline. When fueling, be sure that the fuel strainer is in place. Replace the fuel tank cap. Thereafter, check the engine's fuel gauge for the amount of unleaded gasoline in the fuel tank. If necessary, refill the fuel tank with unleaded gasoline; the generator must be turned off and cooled down before refilling the fuel tank.



---

# 2000W Generator

---

## Operation (cont'd)

### Starting

1. Fill or check the engine oil. (see Fig. 1)
2. Fill or check the gasoline.
3. Disconnect all electrical devices.
4. Open the fuel valve to the "ON" position.
5. Close the choke. (see Fig. 2)
6. Turn engine switch on. (see Fig. 3)
7. Pull the starting cord firmly and quickly and start the engine. (see Fig. 4)
8. Repeat step 7 until engine starts
9. Pull choke to open. (see Fig. 5)

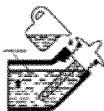


Fig. 1



Fig. 2



Fig. 3



Fig. 4



Fig. 5

## Operation (cont'd)

### Powering 120 Volt AC Tools And Equipment:

1. Prior to powering tools and equipment, make sure the generator's rated voltage, and amperage capacity (120V/AC @ 13.75 AMPs) is adequate to supply all electrical loads that the unit will power. If powering exceeds the generator's capacity, it may be necessary to group one or more of the tools and/or equipment for connection to a separate generator.



**CAUTION: ATTEMPTING TO POWER SENSITIVE ELECTRONIC EQUIPMENT WITHOUT THE USE OF AN APPROVED LINE CONDITIONER MAY CAUSE DAMAGE TO THE EQUIPMENT. ALL POWER AMERICA IS NOT RESPONSIBLE FOR ANY DIRECT OR INDIRECT DAMAGE CAUSED BY FAILURE TO USE AN APPROVED LINE CONDITIONER.**

2. Once the generator is running, simply connect the power cords of 110/120 volt AC powered tools and equipment into the 120 volt AC dual outlets.



**NOTE: THE GENERATOR FEATURES AN AC NON-FUSE CIRCUIT BREAKER TO PROTECT THE AC CIRCUIT IN CASE OF AN OVERLOAD. SHOULD AN OVERLOAD OCCUR, THE BREAKER WILL "TRIP" TO ITS "OFF" POSITION, CAUSING THE GENERATOR TO AUTOMATICALLY SHUT DOWN. IN THIS CASE, REFER TO STEP #1 ABOVE IN THIS POSITION. THEN, RESET THE CIRCUITRY SYSTEM BY TURNING THE CIRCUIT BREAKER TO ITS "ON" POSITION. RESTART THE GENERATOR AND CONTINUE POWERING THE REMAINING TOOLS AND EQUIPMENT.**

3. Note: The Generator features an AC Non-Fuse Circuit Breaker "OFF" position. Turn the fuel valve to its "OFF" position.
4. Disconnect all electrical powered tools and equipment from the generator's 110/120 volt AC dual outlets.
5. After the engine and generator have completely cooled, store generator in a safe, clean, dry location (if not already installed).

---

# 2000W Generator

---

## Operation (cont'd)

### Powering 12 Volt DC tools and Equipment:

1. Prior to powering tools and equipment, make sure the generator's rated voltage, and amperage capacity (12V/DC @ 8.3 AMPS) is adequate to supply all electrical loads that the unit will power. If powering exceeds the generator's capacity, it may be necessary to group one or more of the tools and/or equipment for connection to a separate generator.
2. Connect the power cord of a 12 VDC powered tool or equipment to the DC Terminals.



**CAUTION: MAKE SURE TO CONNECT THE POSITIVE (+) LEAD OF THE POWER CORD TO THE POSITIVE (+) TERMINAL ON THE GENERATOR, AND CONNECT THE NEGATIVE (-) LEAD OF THE POWER CORD TO THE NEGATIVE (-) TERMINAL ON THE GENERATOR.**

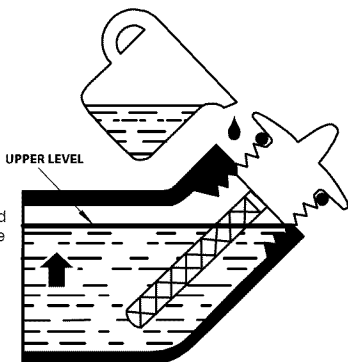
3. Start and run the engine as described in Operations page.
4. When finished using the generator, turn the engine power switch to its "OFF" position. Turn the fuel valve to its "OFF" position.
5. Disconnect the electrical powered tools power cord from the generator's DC terminals.
6. After the engine and generator have completely cooled, store the generator in a safe, clean, dry location (if not already installed in one).

## Inspection, Cleaning, and Maintenance



**WARNING! ALWAYS MAKE SURE THE ENGINE POWER SWITCH IS IN ITS "OFF" POSITION. DISCONNECT THE SPARK PLUG WIRE FROM THE ENGINE. AND ALLOW SUFFICIENT TIME FOR THE ENGINE AND GENERATOR TO COMPLETELY COOL BEFORE PERFORMING ANY INSPECTIONS, MAINTENANCE, OR CLEANING.**

- Before each use, inspect the generator. Check for:
  - Loose screws
  - Misaligned or binding moving parts
  - Cracked or broken parts
  - Damaged electrical wiring
  - Any other condition that may affect safe operation.
- If an engine problem occurs, have it checked by a qualified service technical before further use. Do not use damaged equipment.
- Before each use, make sure the engine's oil and gas levels are adequate. If necessary, fill the crankcase until the oil level is even with the oil fill hole and/or fill the fuel tank.
- Before each use, remove all debris with a soft brush, rag, or vacuum.
- Lubricate all moving parts using a premium quality, lightweight machine oil.
- Every 20 hours of use, drain the old engine oil and replace with high quality SAE 10W-30 grade engine oil.
- Every 300 hours of use, have a qualified, certified technician perform thorough maintenance on the generator and engine.
- For long term storage, either drain fuel into suitable container or add a fuel preservative/ stabilizer (not included) to prevent fuel breakdown.



---

# 2000W Generator

---

## Installation



**NOTE: PRIOR TO POWERING TOOLS AND EQUIPMENT MAKE SURE THE GENERATOR'S RATED VOLTAGE, WATTAGE AND AMPERAGE CAPACITY (120V@-13.75AMPs) IS ADEQUATE TO SUPPLY ALL ELECTRICAL LOADS THAT THE UNIT WILL POWER. IF POWERING EXCEEDS THE GENERATOR'S CAPACITY, IT MAY BE NECESSARY TO GROUP ONE OR MORE OF THE TOOLS AND/OR EQUIPMENT FOR CONNECTION TO A SEPERATE GENERATOR.**

Electrical and other permits may be required for the installation of emergency power systems. Investigate your local building and electrical codes before installing this unit. Installation must be completed by licensed contractors.



**WARNING! THE GENERATOR WEIGHS APPROXIMATELY 62 POUNDS. USE CARE AND THE PROPER LIFTING OR HOISTING EQUIPMENT WHEN MOVING IT TO THE INSTALLATION LOCATION. ALWAYS CONNECT HOIST LINES TO THE FRAME OF THE GENERATOR.**

## General Location

- Make sure to locate and install the generator outdoors where cooling air is readily available.
- Install the generator so that the air inlets and outlets are not blocked by obstructions such as bushes, trees, or snow drifts. Locating it in the path of heavy winds or snowdrifts may require the placement of a barrier for protection. In normal weather conditions, the air vent should face the prevailing wind direction.
- Install the generator on a concrete slab or other area where rain drainage or flood waters can not reach it.
- Generator placement should allow four feet of access to all sides for maintenance.
- Place the generator as close as possible to the electrical tools and equipment being powered to reduce the length of extension cords.
- If the generator is located indoors the engine exhaust must be ventilated to the outdoors using leak-proof, heat resistant flexible metal, flex tubing.

## Installation (cont'd)

### Supporting and Mounting

Mount the generator on a concrete slab capable of supporting the weight of the generator. The slab must extend on all sides beyond the frame by at least one foot. Contact a cement contractor for slab specifications if necessary. Attach the frame to the concrete slab using 3/8" diameter expansion anchor bolts (not supplied).

---

# 2000W Generator

---

## Specifications

### AC electrical

---

Current Output	120V @ 13.75Amps, 60Hz
Continous/rated Wattage	1,650
Peak Wattage	2,000
Outlet	two 120V AC, 3-prong grounded

---

### DC electrical

---

Current Output	12V/DC @ 8.3A
----------------	---------------

---

### Gasoline engine

---

Horsepower	4
Type	4-stroke gasoline engine
Displacement	119cc
Oil capacity	0.6 liters
EPA approved	yes

---

### Fuel

---

Type	Unleaded gasoline
Capacity	2 gallons (7.5 liters)
Running time	9.5 hours (approx.)
Fuel gauge	no

---

### Weight

---

Approximate weight	62lbs.
--------------------	--------

---

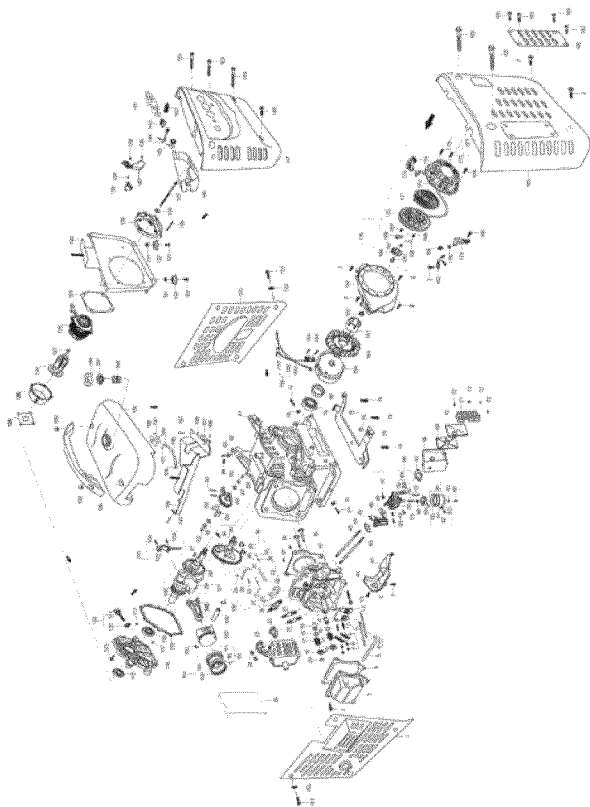


---

# Owner's Manual

---

## General Parts Listing



---

# 2000W Generator

---

## General Parts Listing (cont'd)

<b>APA Part No.</b>	<b>Part. No</b>	<b>Description</b>
APG 3010-01-LF	41221	Muffler pane
APG 3010-02-LF	GB5787-86	Bolt M6-12
APG 3010-03-LF	12310/168F	Cylinder head cover assembly
APG 3010-04-LF	12312/168F	Gasket, cylinder head cover
APG 3010-05-LF	20651/168F	Air duct
APG 3010-06-LF	14250/1P64FV	Pusher
APG 3010-07-LF	14416/168F	Lock nut
APG 3010-08-LF	14413/168F	Sleeve
APG 3010-09-LF	14411/168F	Valve rocker
APG 3010-10-LF	14415/168F	Adjusting bolt for valve gap
APG 3010-11-LF	14410/168F	Valve rocker assembly
APG 3010-12-LF	14261/1P64FV	Pusher guide
APG 3010-13-LF	12256	Bolt M8 55
APG 3010-14-LF	12214/168F	Intake valve guide
APG 3010-15-LF	12215/168F	Exhaust valve guide
APG 3010-16-LF	12219/168F	Circip
APG 3010-17-LF	14755/168F	Valve spring
APG 3010-18-LF	14751/168F	Spring seat, intake valve
APG 3010-19-LF	14757/168F	Spring seat, exhaust valve
APG 3010-20-LF	14758/168F	Cap
APG 3010-21-LF	12253/168F	Stud M8-34
APG 3010-22-LF	18300	Exhaust gasket
APG 3010-23-LF	18000	Muffler

---

# Owner's Manual

---

## General Parts Listing (cont'd)

<b>APA Part No.</b>	<b>Part. No</b>	<b>Description</b>
APG 3010-24-LF	GB41-86	Nut M8
APG 3010-25-LF	18625	Heat insulation
APG 3010-26-LF	34200/168F	Spark plug 6RTC
APG 3010-27-LF	26420	Support panel assembly
APG 3010-28-LF	GB6177-86	Nut M6
APG 3010-29-LF	26331	Regulating
APG 3010-30-LF	26362	Lock bolt
APG 3010-31-LF	26363	Back spring
APG 3010-32-LF	26364	Fine regulating
APG 3010-33-LF	26341	Pulling rod
APG 3010-34-LF	26415	Regulating spring
APG 3010-35-LF	26362	Lock bolt
APG 3010-36-LF	26000	Regulating control system
APG 3010-37-LF	12218/168F	Set pin-10-16
APG 3010-38-LF	14721	Exhaust valve
APG 3010-39-LF	14711	Intake valve
APG 3010-40-LF	12220	Gasket, cylinder head
APG 3010-41-LF	12210	Cylinder head assembly
APG 3010-42-LF	19721	Lead wind cover
APG 3010-43-LF	12252/168F	Stud M6-113
APG 3010-44-LF	12254/168F	Inlet gasket
APG 3010-45-LF	16141	Connecting block
APG 3010-46-LF	16142/168F	Carburetor gasket

---

# 2000W Generator

---

## General Parts Listing (cont'd)

<b>APA Part No.</b>	<b>Part. No</b>	<b>Description</b>
APG 3010-47-LF	16148/168F	Choke switch
APG 3010-48-LF	16280	Throttle unit
APG 3010-49-LF	16422/168F	Spring, mixture adjustment screw
APG 3010-50-LF	16425/168F	Mixture adjustment screw
APG 3010-51-LF	16421/168F	Idle adjustment screw

---

# Owner's Manual

---

## General Parts Listing (cont'd)

<b>APA Part No.</b>	<b>Part. No</b>	<b>Description</b>
APG 3010-52-LF	16332/168F	Choke stem
APG 3010-53-LF	16331/168F	Choke
APG 3010-54-LF	16330/168F	Choke unit
APG 3010-55-LF	16250	Mixture chamber body
APG 3010-56-LF	16251	Main nozzle
APG 3010-57-LF	16240/168F	Float needle
APG 3010-58-LF	16254	Main jet
APG 3010-59-LF	16230/168F	Float
APG 3010-60-LF	16219/168F	Float chamber gasket
APG 3010-61-LF	16211/168F	Float chamber
APG 3010-62-LF	16215/168F	Float chamber drain Screw
APG 3010-63-LF	16216/168F	Washer
APG 3010-64-LF	16210/168F	Float chamber
APG 3010-65-LF	16213/168F	Screw
APG 3010-66-LF	16100	Carburetor assembly
APG 3010-67-LF	17330	Air cleaner gasket
APG 3010-68-LF	17131	Air cleaner housing
APG 3010-69-LF	17132	Filter element
APG 3010-70-LF	17183	Filter Support
APG 3010-71-LF	17111	Air cleaner cover
APG 3010-72-LF	GB818-85	Bolt
APG 3010-73-LF	GB6177-86	Nut M6
APG 3010-74-LF	GB5787-86	Bolt M6-30

---

# 2000W Generator

---

## General Parts Listing (cont'd)

APA Part No.	Part. No	Description
APG 3010-75-LF	GB119-86	set pin- 8.7-6.2-19
APG 3010-76-LF	41162	support panel
APG 3010-77-LF	11212/168F	Drain plug
APG 3010-78-LF	11213/168F	Washer
APG 3010-79-LF	GB276-89	Bearing 62/22
APG 3010-80-LF	13190	Oil seal, crankshaft
APG 3010-81-LF	11100	Crankcase
APG 3010-82-LF	26311/168F	Regulating sway bar
APG 3010-83-LF	26329/168F	Washer
APG 3010-84-LF	26321/168F	Split pin
APG 3010-85-LF	25151/168F	Regulating shaft
APG 3010-86-LF	25164/168F	Snap ring
APG 3010-87-LF	25165/168F	Washer, driven gear
APG 3010-88-LF	25121/168F	Driven gear, regulator
APG 3010-89-LF	25163/168F	Pin
APG 3010-90-LF	25141/168F	Flying block
APG 3010-91-LF	25120/168F	Driven gear, regulator assembly
APG 3010-92-LF	25132/168F	Washer
APG 3010-93-LF	25131/168F	Sliding sleeve
APG 3010-94-LF	14146/168F	Extension spring
APG 3010-95-LF	14100	Camshaft assembly
APG 3010-96-LF	14455/168F	Tappet
APG 3010-97-LF	13118/168F	Woodruff key



---

# 2000W Generator

---

## General Parts Listing (cont'd)

APA Part No.	Part. No	Description
APG 3010-103-LF	13132	Connecting rod cover
APG 3010-104-LF	13133/1P64FV	Bolt
APG 3010-105-LF	13130	Connecting rod
APG 3010-106-LF	13222/1P64FV	Piston pin circlip
APG 3010-107-LF	13211	Piston
APG 3010-108-LF	13221/1P64FV	Piston pin
APG 3010-109-LF	13311	Piston ring
APG 3010-110-LF	13312	Piston ring
APG 3010-111-LF	13322	Side rail
APG 3010-112-LF	13321	Expander
APG 3010-113-LF	13320	Scraper ring set
APG 3010-114-LF	13300	Piston ring set
APG 3010-115-LF	11119	Gasket, crankcase
APG 3010-116-LF	GB276-89	Bearing 62/22
APG 3010-117-LF	11118/168F	Set pin
APG 3010-118-LF	11311	Crankcase cover
APG 3010-119-LF	13180	Oil seal, crankshaft
APG 3010-120-LF	15612/168F	Seal
APG 3010-121-LF	15611/168F	Dipstick
APG 3010-122-LF	15610/168F	Dipstick with seal
APG 3010-123-LF	GB5787-86	Bolt M6-28
APG 3010-124-LF	31134	washer
APG 3010-125-LF	31714	Right cover, generator
APG 3010-126-LF	31715	Rotor assembly
APG 3010-127-LF	GB276-89	Bearing 6204-2ZN
APG 3010-128-LF	31710	Stator assembly



---

# Owner's Manual

---

## General Parts Listing (cont'd)

<b>APA Part No.</b>	<b>Part. No</b>	<b>Description</b>
APG 3010-129-LF	31134	washer
APG 3010-130-LF	41160	Generator support panel
APG 3010-131-LF	GB6177-86	Nut M6
APG 3010-132-LF	42130	Bottom rubber
APG 3010-133-LF	GB5787-86	Bolt M6-25
APG 3010-134-LF	31411	Stay, generator
APG 3010-135-LF	GB95-85	washer 6mm
APG 3010-136-LF	31414	Bolt, M10-26
APG 3010-137-LF	31933	Bolt, M10-265
APG 3010-138-LF	31370	Brush assembly
APG 3010-139-LF	31997	Bolt
APG 3010-140-LF	31600	Voltage regulator
APG 3010-141-LF	35510	Consent (AC)
APG 3010-142-LF	32520	Earth terminal set
APG 3010-143-LF	35520	Consent (DC)
APG 3010-144-LF	31710	Current protector
APG 3010-145-LF	35410	Ignition switch
APG 3010-146-LF	37321	Control panel case
APG 3010-147-LF	37310	Control panel
APG 3010-148-LF	GB5787-86	Bolt M6-16
APG 3010-149-LF	GB5787-86	Bolt M6-70
APG 3010-150-LF	GB5787-86	Bolt M6-35
APG 3010-151-LF	41222	Oil panel
APG 3010-152-LF	GB93-86	Spring ring
APG 3010-153-LF	GB5787-88	Bolt M6-12

# 2000W Generator

## General Parts Listing (cont'd)

APA Part No.	Part. No	Description
AAPG 3010-154-LF	GB5787-86	Screw M6_25
APG 3010-155-LF	34410/168F	Engine stop cable
APG 3010-156-LF	34510/168F	Ignition coil
APG 3010-157-LF	34310/168F	Spark plug cap
APG 3010-158-LF	34500/168F	Ignition coil assembly
APG 3010-159-LF	27500	Flywheel
APG 3010-160-LF	19722	Flywheel fan
APG 3010-161-LF	27371/168F	Starting flange
APG 3010-162-LF	27515/168F	Nut M14-1.5
APG 3010-163-LF	37850/168F	Diode
APG 3010-164-LF	19710	Fan hood assembly
APG 3010-165-LF	27315/168F	Set screw
APG 3010-166-LF	27341/168F	Spring lid
APG 3010-167-LF	27311/168F	Friction spring
APG 3010-168-LF	27331/168F	Ratchet
APG 3010-169-LF	27312/168F	Ratchet spring
APG 3010-170-LF	27351/168F	Starter rolls
APG 3010-171-LF	27319/168F	Spiral spring
APG 3010-172-LF	27380/168F	Casing
APG 3010-173-LF	27313/168F	Rope
APG 3010-174-LF	27361/168F	Pulling handle
APG 3010-175-LF	GB5787-86	Bolt M6-8
APG 3010-176-LF	27300/168F	Recoil starter
APG 3010-177-LF	27100	Recoil starter assembly
APG 3010-178-LF	32211/168F	Plastic clip
APG 3010-179-LF	19810	Crankcase side plate assy
APG 3010-180-LF	GB5787-86	Bolt M6-20

