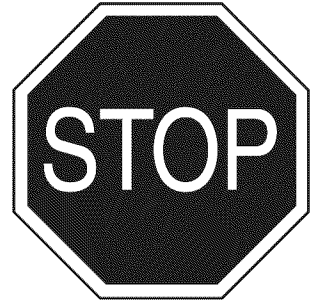


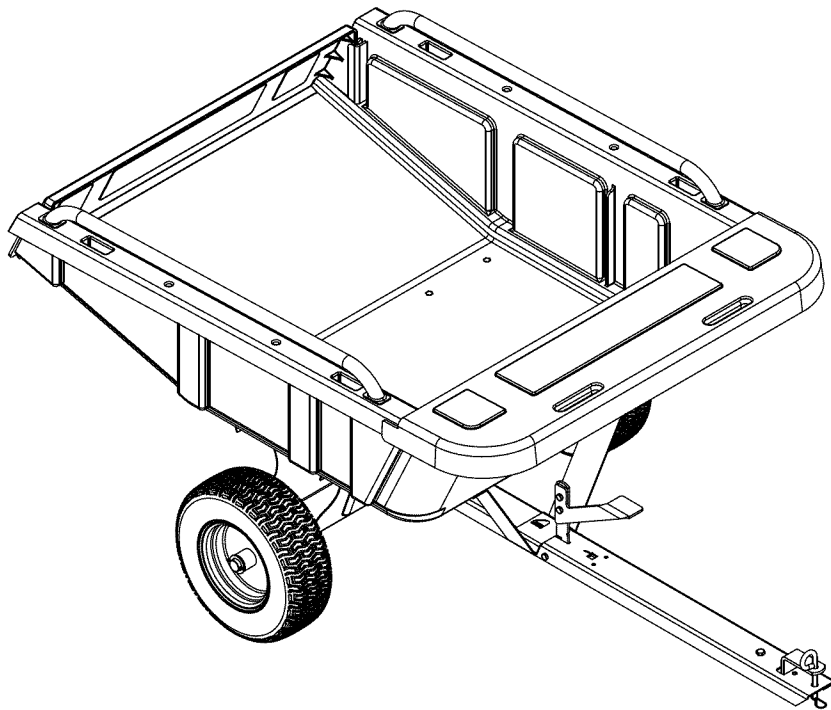
Operator's Manual



PROFESSIONAL POLY CART

Model No. 486.24469

DO NOT RETURN TO STORE
For Missing Parts or Assembly
Questions Call 1-866-576-8388



CAUTION:

Before using this product, read this manual and follow all Safety Rules and Operating Instructions.

- Safety
- Assembly
- Operation
- Maintenance
- Parts

Sears, Roebuck and Co., Hoffman Estates, IL 60179 U.S.A.
www.sears.com/craftsman

TABLE OF CONTENTS

SAFETY..... 2	MAINTENANCE 8
WARRANTY 2	STORAGE 8
FULL SIZE HARDWARE CHART 3	SLOPE GUIDE 9
CARTON CONTENTS..... 4	REPAIR PARTS ILLUSTRATION..... 10
ASSEMBLY..... 4	REPAIR PARTS LIST..... 11
OPERATION..... 7	PARTS ORDERING/SERVICE BACK PAGE



SAFETY



Any power equipment can cause injury if operated improperly or if the user does not understand how to operate the equipment. Exercise caution at all times, when using power equipment.

- Read this owners manual before attempting to assemble or operate the cart.
- Read the vehicle owners manual and know how to operate your tractor before using the cart attachment.
- Do not at any time carry passengers in this cart. It has not been designed to carry passengers.
- Never allow children to operate the tractor or the cart attachment.
- Do not allow adults to operate the tractor or cart attachment without proper instructions.
- Always begin with the transmission in first (low) and gradually increase speed as conditions permit.
- Maximum towing speed is 10 m.p.h.
- Do not tow this cart on highways or public thoroughfares.
- Tow the cart at reduced speed over rough terrain and hillsides or near creeks and ditches to prevent tipping over and loss of control. Do not drive too close to a creek or ditch.
- Vehicle braking and stability may be affected with the attachment of this cart. Do not fill cart to maximum weight capacity without checking the capability of the towing vehicle to safely pull and stop with the cart attached.
- Before operating vehicle on any grade (hill) refer to safety rules in the vehicle owner's manual concerning safe operation on slopes. Refer also to the slope guide on page 9 of this manual. Be aware of changing conditions on slopes. Stay off steep slopes!
- Follow maintenance and lubrication instructions as outlined in this manual.



Look for this symbol to point out important safety precautions. It means — **Attention!!**
Become alert!! Your safety is involved.

WARRANTY

CRAFTSMAN PROFESSIONAL FULL WARRANTY

When operated and maintained according to all supplied instructions, if this Craftsman Professional product fails due to a defect in material or workmanship within two years from the date of purchase, return it to any Sears store or other Craftsman Professional outlet in the United States for free replacement.

This warranty applies for only 90 days from the date of purchase if this product is ever used for commercial or rental purposes. This warranty does not include items considered to expendable parts that can wear out from normal use within the warranty period. This warranty gives you specific legal rights, and you may also have other rights which vary from state to state.

Sears, Roebuck and Co., D817WA, Hoffman Estates, IL 60179

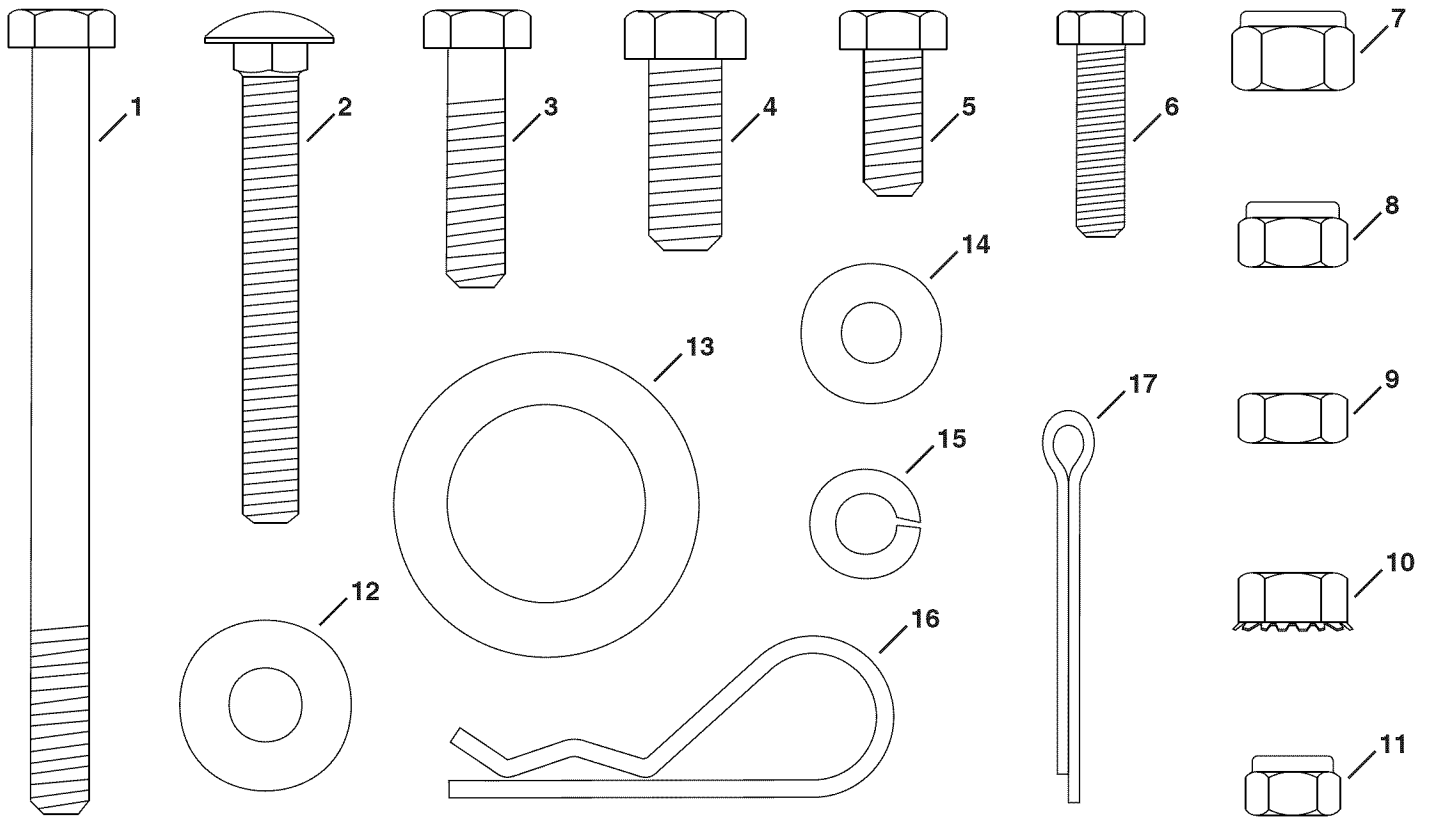
DO NOT RETURN TO STORE for Missing Parts or Assembly Questions

Call 1-866-576-8388 Attachment Hotline

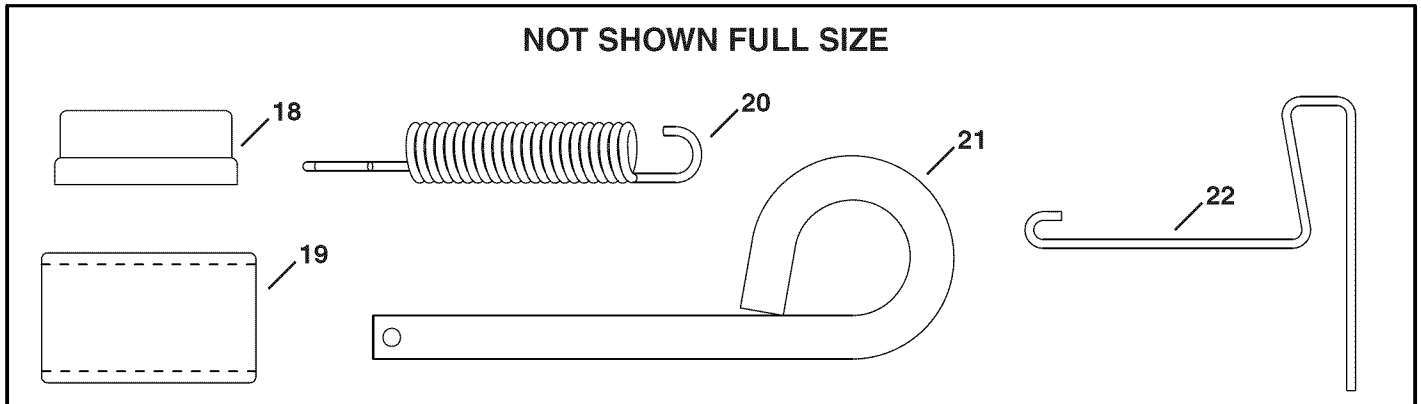
The model number and serial numbers will be found on a decal attached to the Professional Poly Cart. You should record both the serial number and the date of purchase and keep in a safe place for future reference.	<table style="width: 100%; border-collapse: collapse;"> <tr> <td style="width: 60%;">MODEL NUMBER:</td> <td style="width: 40%;">486.24469</td> </tr> <tr> <td>SERIAL NUMBER:</td> <td>_____</td> </tr> <tr> <td>DATE OF PURCHASE:</td> <td>_____</td> </tr> </table>	MODEL NUMBER:	486.24469	SERIAL NUMBER:	_____	DATE OF PURCHASE:	_____
MODEL NUMBER:	486.24469						
SERIAL NUMBER:	_____						
DATE OF PURCHASE:	_____						

FULL SIZE HARDWARE CHART

SHOWN FULL SIZE

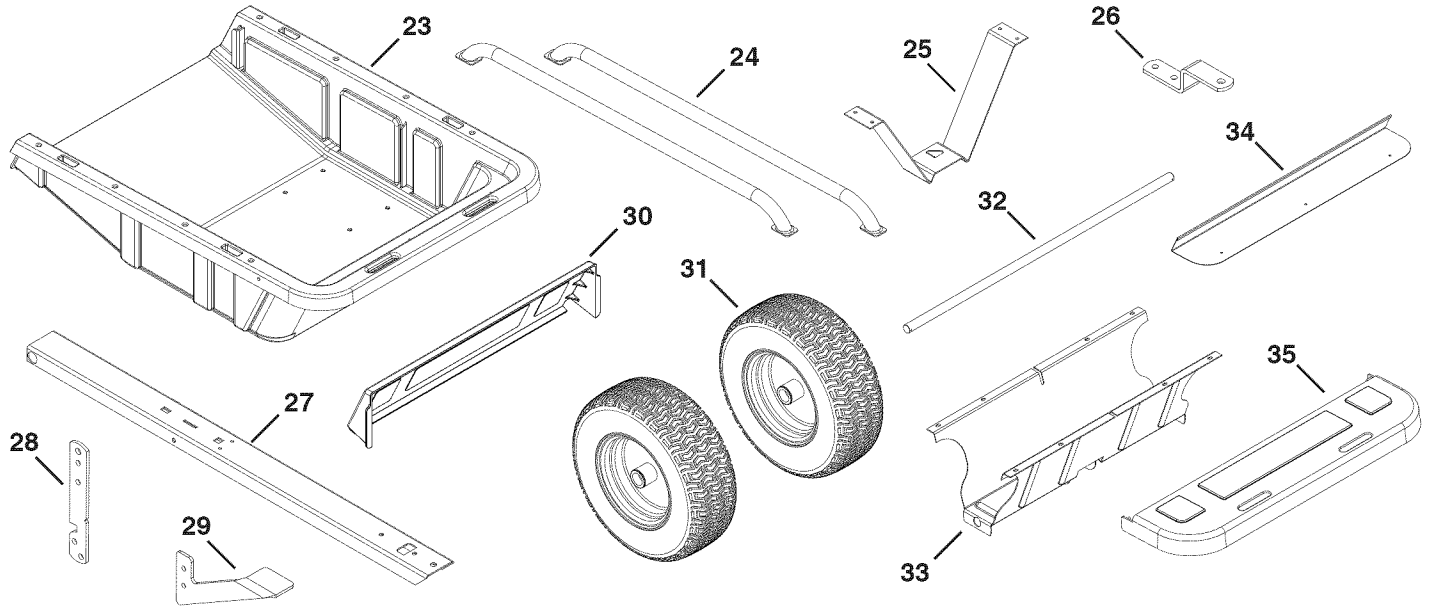


NOT SHOWN FULL SIZE



REF	QTY	DESCRIPTION	REF	QTY	DESCRIPTION
1	1	Hex Bolt, 5/16-18 x 4"	12	4	Washer, 5/16"
2	4	Carriage Bolt, 5/16-18 x 2-1/2"	13	4	Washer, 1.59 x 1.032 x .06"
3	8	Hex Bolt, 5/16-18 x 1-1/4"	14	3	Washer, 1/4"
4	1	Hex Bolt, 3/8-16 x 1"	15	4	Lock Washer, 5/16"
5	2	Hex Bolt, 5/16-18 x 3/4"	16	1	Hair Cotter Pin
6	7	Hex Bolt, 1/4-20 x 1"	17	2	Cotter Pin
7	1	Nylock Nut, 3/8"	18	2	Hub Cap
8	11	Nylock Nut, 5/16"	19	2	Spacer
9	4	Hex Nut, 5/16"	20	1	Extension Spring
10	2	Sims Nut, 5/16"	21	1	Hitch Pin
11	7	Nylock Nut, 1/4"	22	1	Spring Puller Tool

CARTON CONTENTS



REF	QTY	DESCRIPTION	REF	QTY	DESCRIPTION
23	1	Cart Bed	30	1	Tailgate
24	2	Cart Rail	31	2	Wheels
25	1	Latch Stand Bracket	32	1	Axle
26	1	Hitch Bracket	33	1	Wheel Support
27	1	Tongue	34	1	Tool Tray
28	1	Latch Lock Bracket	35	1	Tool Box Lid
29	1	Step Bracket			

ASSEMBLY

TOOLS REQUIRED FOR ASSEMBLY

- (2) 9/16" Wrenches
- (2) 1/2" Wrenches
- (2) 7/16" Wrenches
- (1) Pliers

STEP 1: (SEE FIGURE 1)

- Attach the wheel support to the middle of the cart bed using eight 5/16 x 1-1/4" hex bolts and 5/16" nylock nuts. **Tighten.**

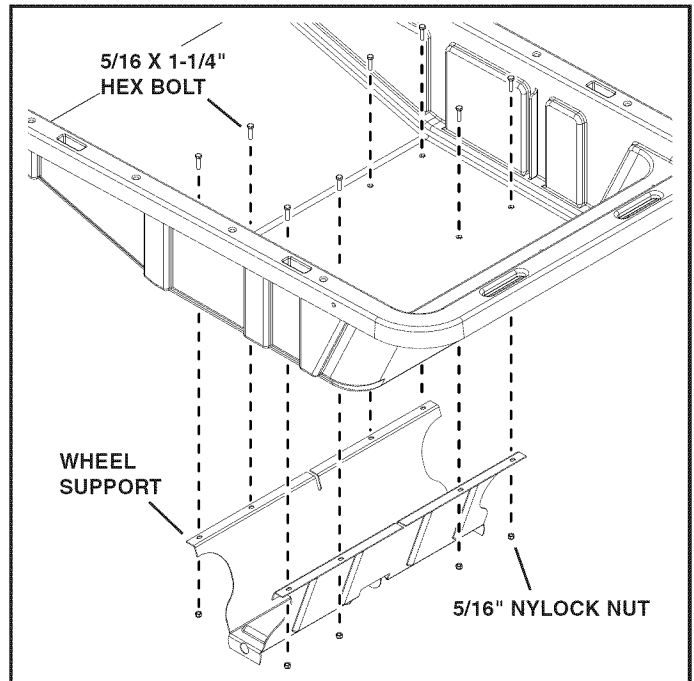


FIGURE 1

STEP 2: (SEE FIGURE 2)

- Assemble the latch stand bracket to the cart bed using four 1/4 x 1" hex bolts and 1/4" nylock nuts. **Tighten.**

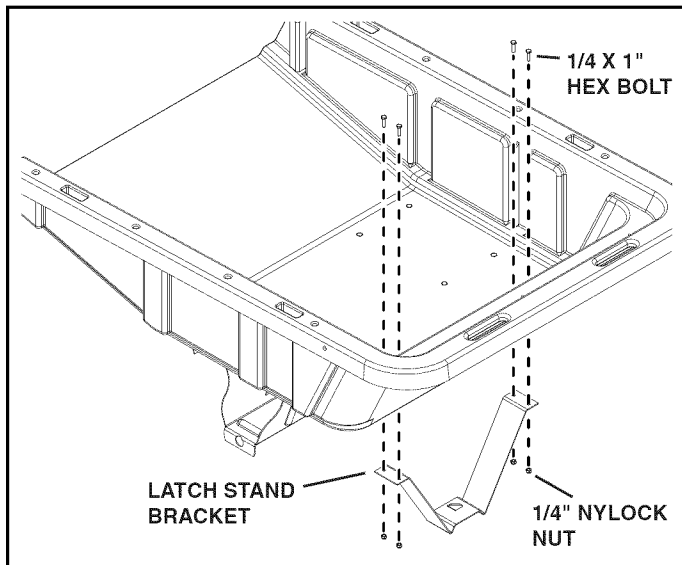


FIGURE 2

STEP 3: (SEE FIGURE 3)

- Turn cart over and place tongue on latch stand bracket and wheel support.
- Slide axle through wheel support and tongue.

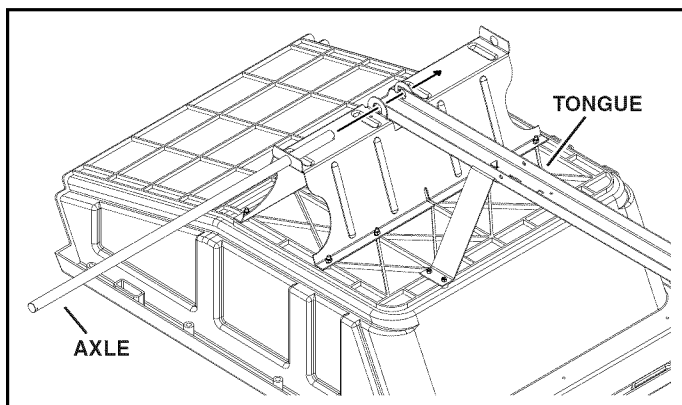


FIGURE 3

STEP 4: (SEE FIGURE 4)

- Assemble the step bracket to the latch lock bracket using two 5/16 x 3/4" hex bolts and 5/16" nylock nuts. **Tighten.**

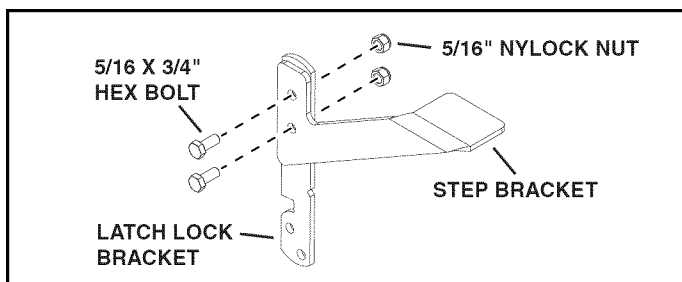


FIGURE 4

STEP 5: (SEE FIGURE 5)

- Slide the step bracket and latch lock bracket into the slot in the tongue.
- Secure the step bracket and latch lock bracket to the tongue using a 5/16 x 4" hex bolt, a 5/16" sims nut on each side of the brackets and a 5/16" nylock nut. Do not over tighten, the bolt should pivot.
- Attach the short end of extension spring to the hole at the bottom of the latch lock bracket.
- Using the spring puller tool, pull the long end of the extension spring down and attach it to the tongue.

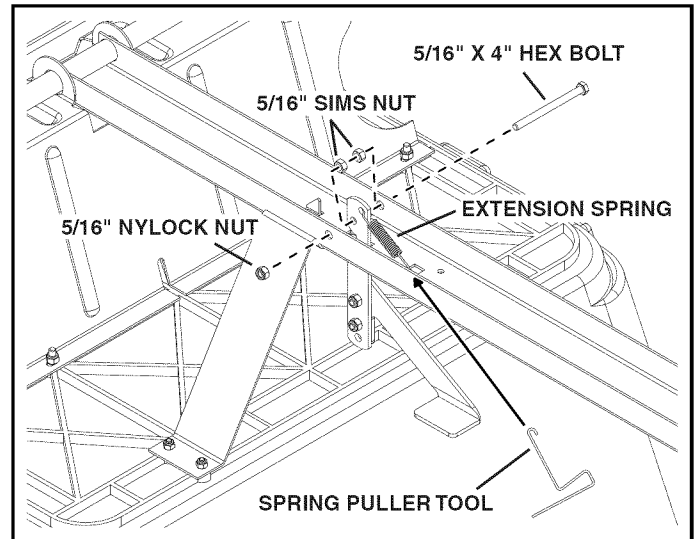


FIGURE 5

STEP 6: (SEE FIGURE 6)

- Assemble a spacer, a 1.59 x 1.032 x .06" washer, a wheel (valve stem facing out), and then another 1.59 x 1.032 x .06" washer to the axle.
- Secure with a 1/8 x 1-1/2" cotter pin, spreading the ends of the cotter pin with a pair of pliers bending the ends around the axle.
- Press hub cap onto washer on outside of wheel.
- Repeat for other wheel.

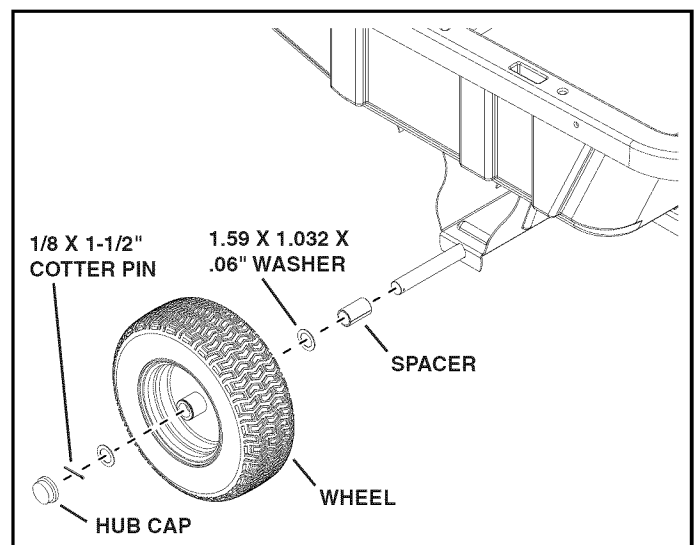


FIGURE 6

STEP 7: (SEE FIGURE 7)

- Slide hitch into slot at end of tongue and secure with a 3/8 x 1" hex bolt and 3/8" nylock nut.
- Assemble hitch pin to hitch bracket and tongue and secure with a hair cotter pin.

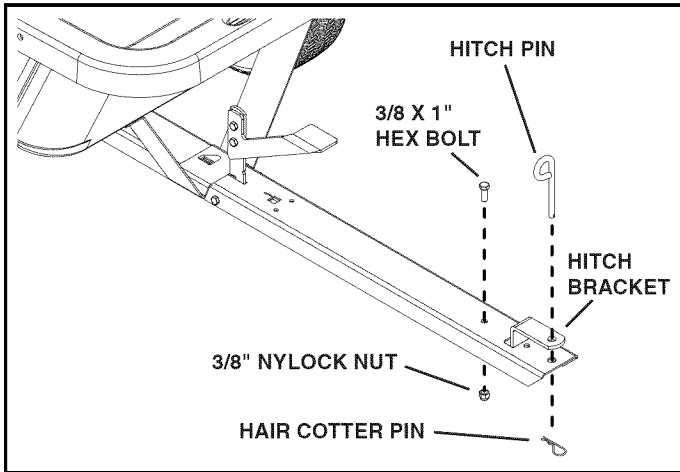


FIGURE 7

STEP 9: (SEE FIGURE 9)

- Attach the tool tray lid to the front of the cart, snapping the plastic posts of lid into the holes in the cart.
- Slide the tailgate down into the slots located at the rear of the cart.

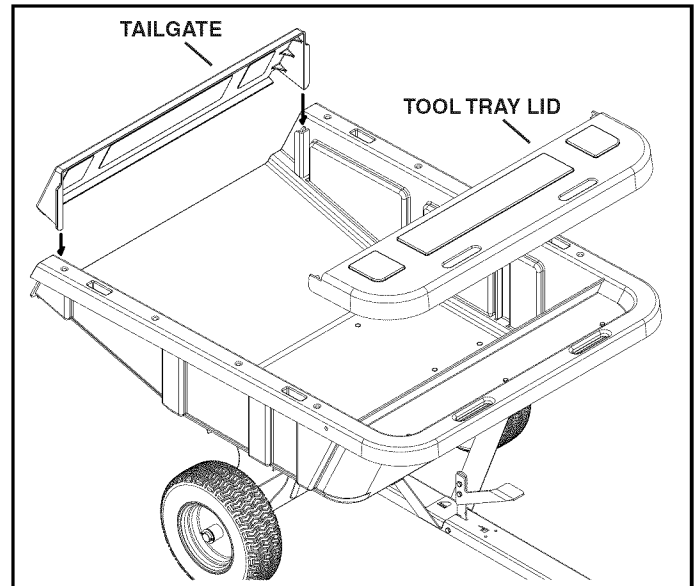


FIGURE 9

STEP 8: (SEE FIGURE 8)

- Attach the tool tray to the front of the cart bed using three 1/4 x 1" hex bolts, 1/4" washers and 1/4" nylock nuts. **Tighten.**

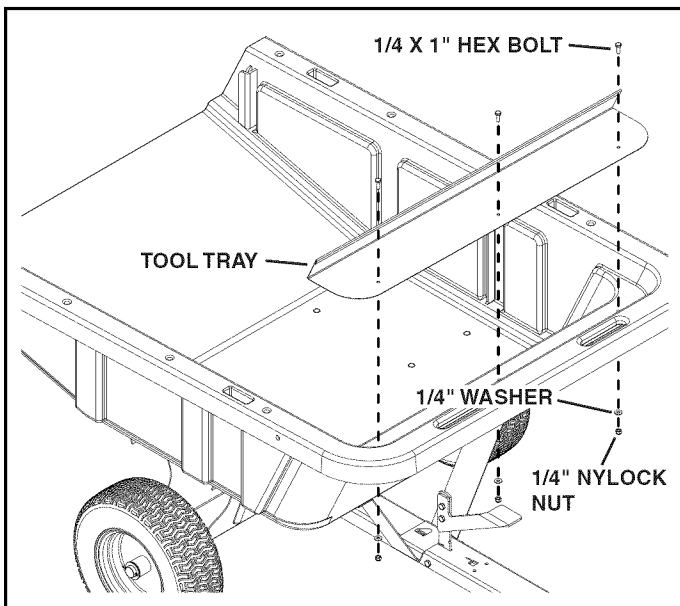


FIGURE 8

STEP 10: (SEE FIGURE 10)

- Slide a 5/16 x 2-1/2" carriage bolt into the ends of the rails.
- Fasten the rails to the cart with the assembled carriage bolts and four 5/16" washers, 5/16" lock washers and 5/16" hex nut.

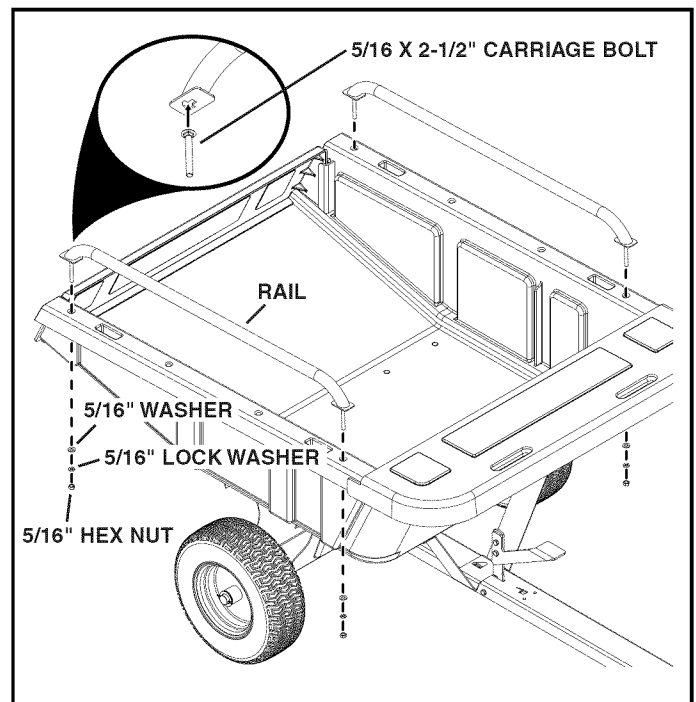
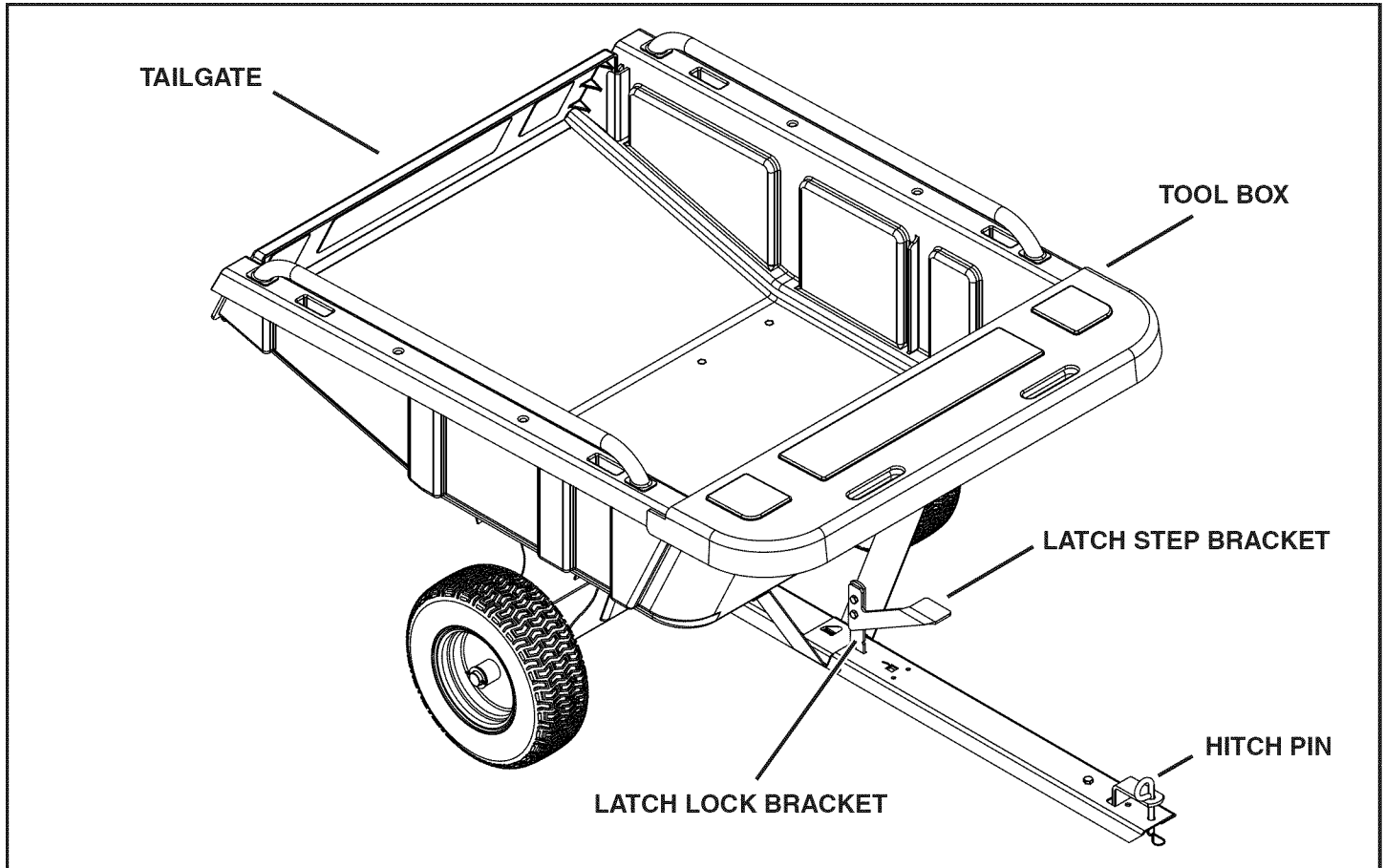


FIGURE 10

OPERATION

KNOW YOUR CART



TOOL BOX

Allows small tools or other equipment to be stored.

LATCH LOCK BRACKET

Secures the cart bed to the tongue.

LATCH STEP BRACKET

Unlocks the latch lock bracket when stepped on.

HITCH PIN

Used to attach cart to tractor.

TAILGATE

Holds material inside cart during transport. Removing allows cart to be dumped.

HOW TO USE YOUR PROFESSIONAL POLY CART

DO NOT EXCEED 800 LB. CAPACITY OF CART

One cubic foot of dirt weighs approximately 80 lbs.



CAUTION: Vehicle braking and stability may be affected with the addition of an accessory or attachment. be aware of changing conditions on slopes.

- The maximum towing speed for this cart is 10 m.p.h.
- Refer to vehicle owners manual for instructions on safe operation on slopes.
- Use slope guide provided on page 9 of this manual to determine whether a slope angle is too steep for safe operation.

- Always test to make sure your tractor has adequate towing and braking capabilities whenever hauling a substantial amount of weight in your cart. Use extra caution when operating on slopes.
- For best handling and traction, distribute the weight of the load evenly in the cart.
- To dump material from the cart, remove the tailgate from rear of cart and then step down on latch step bracket. After emptying, pull the front of the bed down toward the cart tongue until the latch snaps into place. Reinstall tailgate.



CAUTION: To avoid possible injury, be sure no one is near cart before releasing latch.

MAINTENANCE

CUSTOMER RESPONSIBILITIES

Read and follow the maintenance schedule and the procedures listed in the maintenance section.

MAINTENANCE SCHEDULE Fill in dates as you complete regular service.	Service Dates												
	Before each use	After each use	Twice a year	Every season	Before storage								
Check for loose fasteners	X												
Check for worn or damaged parts	X												
Check tire pressure	X												
Lubricate			X										
Clean		X		X									

SCHEDULED MAINTENANCE

- Check for loose fasteners before each use.
- Check for worn or damaged parts before each use.
- Keep tires filled to recommended tire pressure printed on the tire.

- At the beginning of each season, using a light machine oil, lubricate the latch and the latch pivot bolt.
- Pump grease into grease fittings periodically (at least once each season).



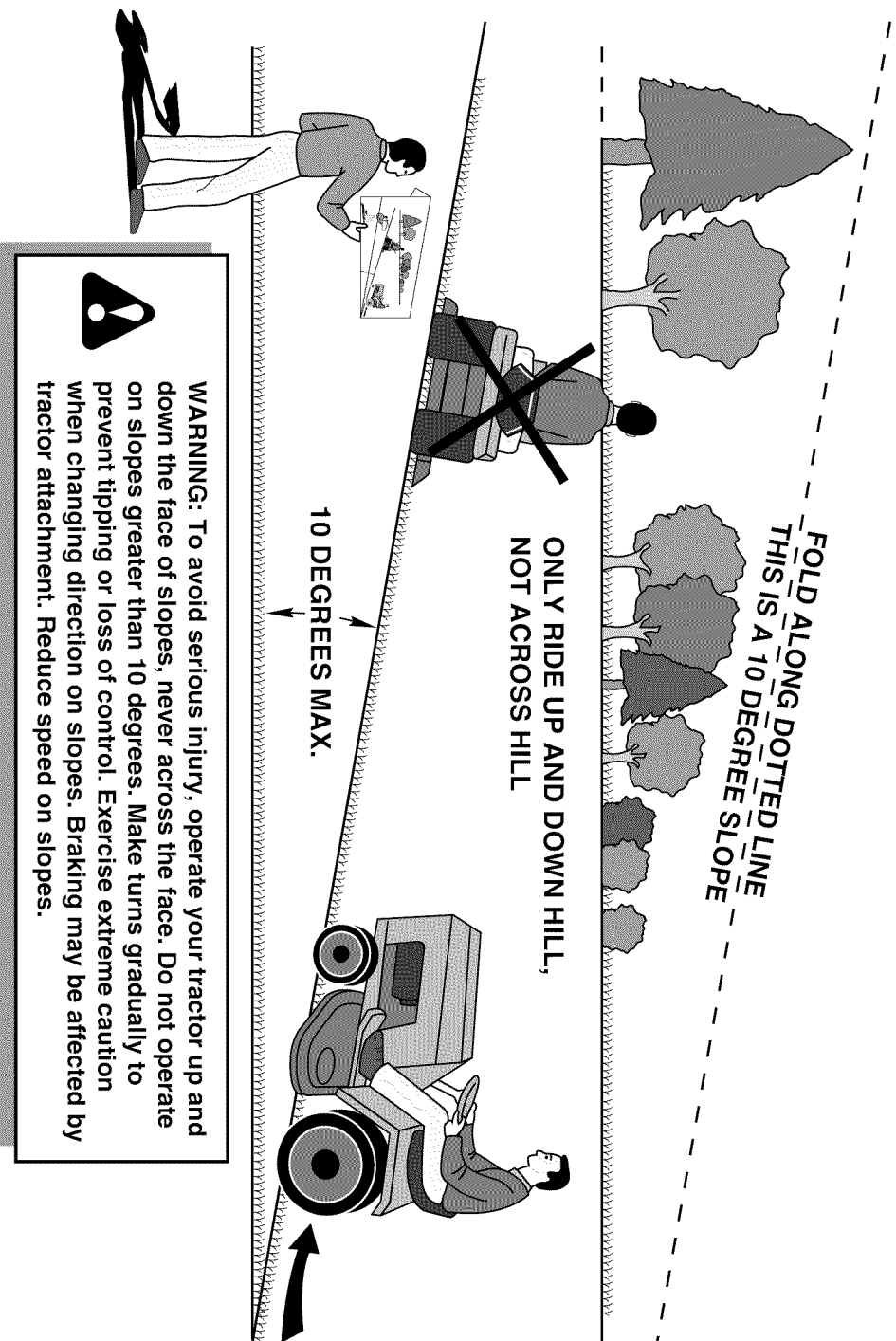
CAUTION: DO NOT inflate tires beyond the maximum recommended pressure printed on side of tire.

STORAGE

STORAGE

- Clean thoroughly before storing.
- Remove any rust from painted surfaces and coat with touch up paint.
- Store in a dry area.

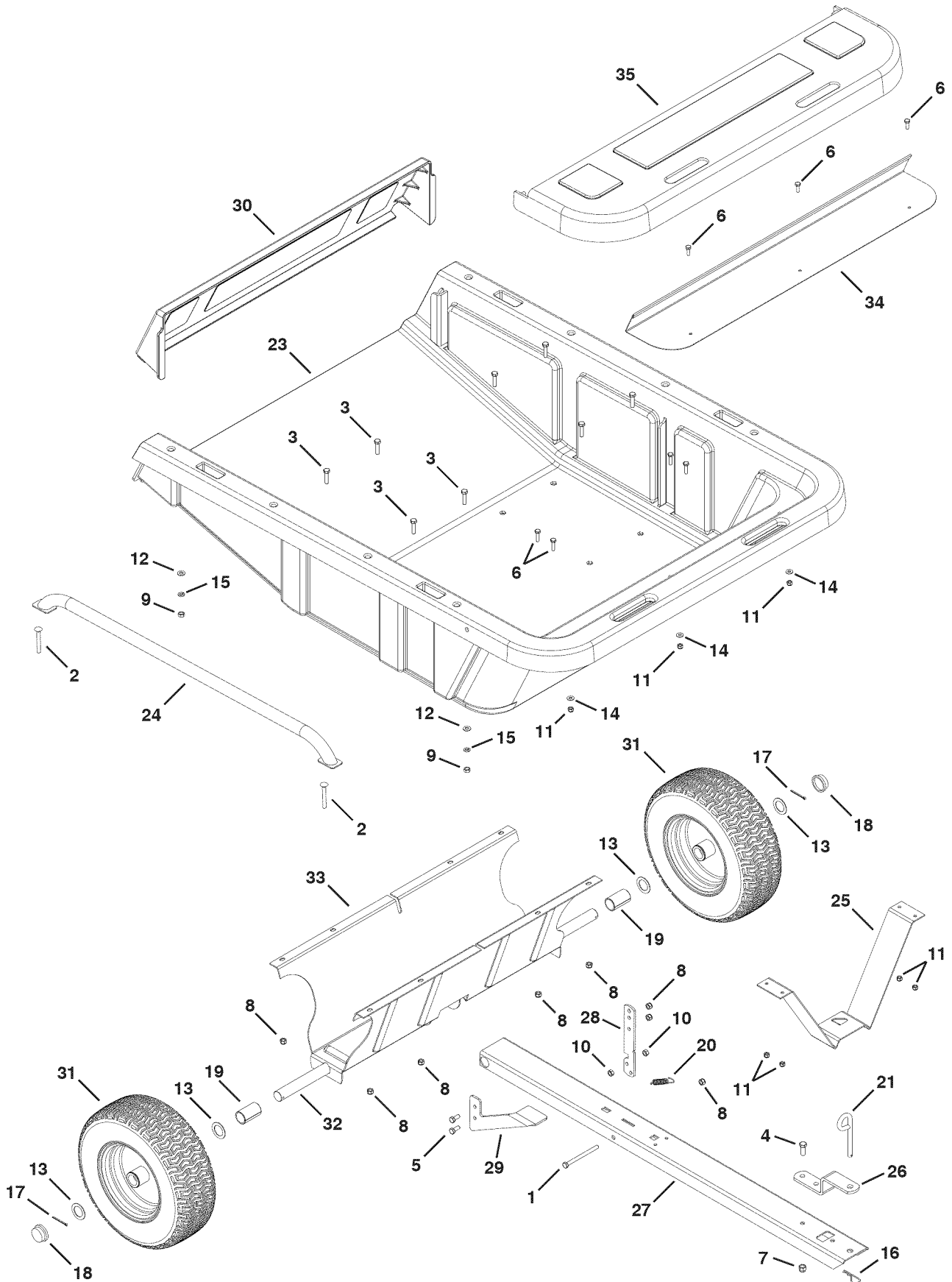
SUGGESTED GUIDE FOR SIGHTING SLOPES FOR SAFE OPERATION OF TRACTOR WITH ATTACHMENT



1. Fold this page along dotted line indicated above.
2. Hold page before you so that its left edge is vertically parallel to a tree trunk or other upright structure.
3. Sight across the fold in the direction of hill slope you want to measure.
4. Compare the angle of the fold with the slope of the hill.

REPAIR PARTS ILLUSTRATION

REPAIR PARTS FOR MODEL 486.24469



REPAIR PARTS LIST

REPAIR PARTS FOR MODEL 486.24469

REF	PART NO	QTY	DESCRIPTION	REF	PART NO	QTY	DESCRIPTION
1	47407	1	Hex Bolt, 5/16-18 x 4"	19	44678	2	Spacer, 1.03 x .25 x 2.06"
2	46324	4	Carriage Bolt, 5/16-18 x 2-1/2"	20	47408	1	Extension Spring
3	43840	8	Hex Bolt, 5/16-18 x 1-1/4"	21	23353	1	Hitch Pin, 3/8 x 3"
4	43001	1	Hex Bolt, 3/8-16 x 1"	22	47622	1	Spring Puller
5	43182	2	Hex Bolt, 5/16-18 x 3/4"	23	41008	1	Cart Bed
6	43661	7	Hex Bolt, 1/4-20 x 1"	24	66579	2	Rail
7	HA21362	1	Nylock Nut, 3/8"	25	24497	1	Latch Stand Bracket
8	47810	11	Nylock Nut, 5/16"	26	23014	1	Hitch Bracket
9	43083	4	Hex Nut, 5/16"	27	26584	1	Tongue
10	46980	2	Sims Nut, 5/16"	28	24498	1	Latch Lock Bracket
11	47189	7	Nylock Nut, 1/4"	29	26533	1	Step Bracket
12	43081	4	Washer, 5/16"	30	41009	1	Tailgate
13	43601	4	Washer, 1.59 x 1.032 x .06"	31	42159	2	Wheel
14	43088	3	Washer, 1/4"	32	25636	1	Axle
15	43086	4	Lock Washer, 5/16"	33	25106	1	Wheel Support
16	43343	1	Hair Cotter Pin, 3/32 x 2-5/16"	34	26530	1	Tool Tray
17	43093	2	Cotter Pin, 1/8 x 1-1/2"	35	42055	1	Tool Box Lid
18	43014	2	Hub Cap		41011	1	Owners Manual

Get it fixed, at your home or ours!

Your Home

For expert troubleshooting and home solutions advice:

manage my home

www.managemyhome.com

For repair – **in your home** – of **all** major brand appliances, lawn and garden equipment, or heating and cooling systems, **no matter who made it, no matter who sold it!**

For the replacement parts, accessories and owner's manuals that you need to do-it-yourself.

For Sears professional installation of home appliances and items like garage door openers and water heaters.

1-800-4-MY-HOME[®] (1-800-469-4663)

Call anytime, day or night (U.S.A. and Canada)

www.sears.com www.sears.ca

Our Home

For repair of carry-in items like vacuums, lawn equipment, and electronics, call anytime for the location of your nearest

Sears Parts & Repair Service Center

1-800-488-1222 (U.S.A.)

www.sears.com

1-800-469-4663 (Canada)

www.sears.ca

To purchase a protection agreement on a product serviced by Sears:

1-800-827-6655 (U.S.A.)

1-800-361-6665 (Canada)

Para pedir servicio de reparación a domicilio, y para ordenar piezas:

1-888-SU-HOGAR[®]

(1-888-784-6427)

Au Canada pour service en français:

1-800-LE-FOYER^{MC}

(1-800-533-6937)

www.sears.ca

Sears