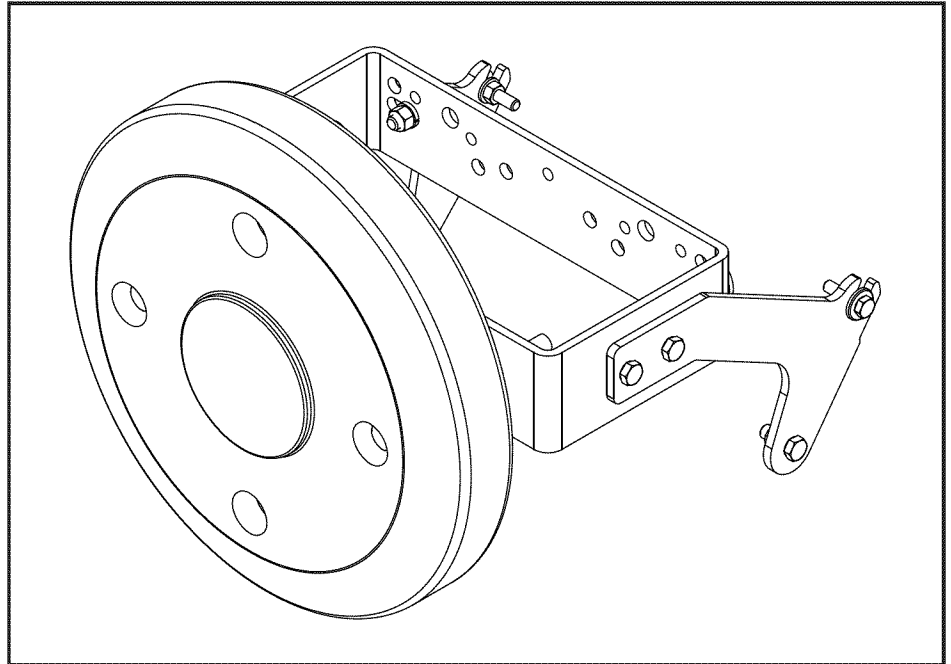


OWNERS MANUAL

**Model No.
45-04371**

CAUTION:
Read Rules for
Safe Operation
and Instructions
Carefully



WEIGHT BRACKET KIT

- **Safety**
- **Assembly**
- **Maintenance**
- **Repair Parts**

SAFETY RULES

Remember, any power equipment can cause injury if operated improperly or if the user does not understand how to operate the equipment. Exercise caution at all times when using power equipment.



LOOK FOR THIS SYMBOL TO POINT OUT IMPORTANT SAFETY PRECAUTIONS. IT MEANS — ATTENTION! BECOME ALERT! YOUR SAFETY IS INVOLVED.



VEHICLE BRAKING AND STABILITY MAY BE AFFECTED WITH THE ADDITION OF AN ACCESSORY OR AN ATTACHMENT. BE AWARE OF CHANGING CONDITIONS ON SLOPES.

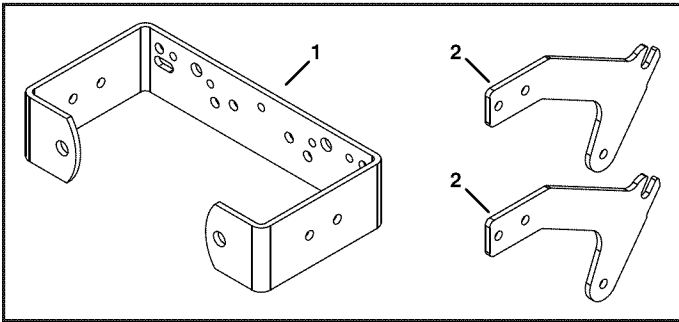
- Refer to your tractor owners manual for "Rules For Safe Operation."
- Do not use more than one 55 lb. weight with this bracket.

- Use 55 lb. weight for snow removal or tilling only.
- Weight must be removed when mower deck is installed.

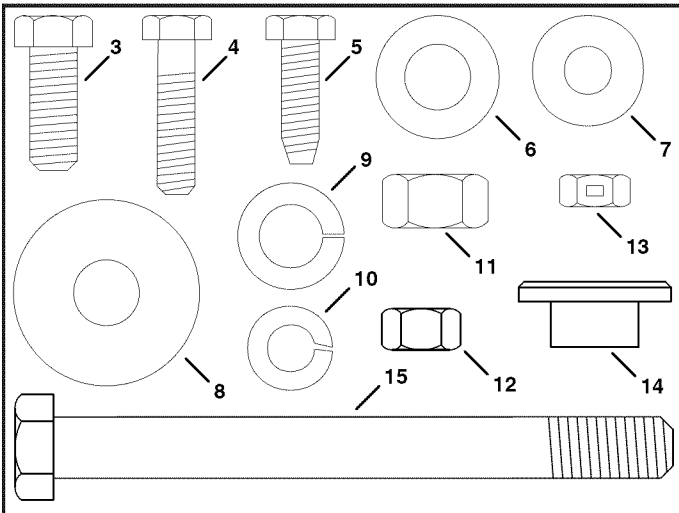
DETERMINE IF YOUR TRACTOR HAS A SINGLE PIECE OR TWO PIECE DRAWBAR

Before assembling your weight bracket kit, find out if your tractor has a single or two piece drawbar.

- Single piece drawbars **WILL NOT** have a seam running horizontally along the drawbar, separating it into a lower and upper half.
- Two piece drawbars **WILL** have a seam running horizontally along the drawbar, separating it into a lower and upper half.



CARTON CONTENTS



HARDWARE PACKAGE

REF	QTY	PART NO	DESCRIPTION
1	1	24215	Weight Bracket
2	2	26553	Weight Bracket Arm
3	6	43001	Hex Bolt, 3/8-16 x 1"
4	2	43840	Hex Bolt, 5/16-18 x 1-1/4"
5	3	44283	Hex Bolt, 5/16-18 x 1" (Thd. Frm)
6	2	R19171616	Washer, .5312 x 1 x .0598"
7	2	43081	Washer, 5/16"
8	2	R19172410	Washer, .5312 x 1.5 x .1345"
9	2	43353	Lock Washer, 1/2"
10	6	43003	Lock Washer, 3/8"
11	2	712-0206	Nex Nut, 1/2-13
12	6	43015	Hex Nut, 3/8-16
13	3	43064	Lock Nut, 5/16-18
14	2	1657-5	Step Bushing
15	2	R74760884	Hex Bolt, 1/2-13 x 5-1/2"

ASSEMBLY OF WEIGHT BRACKET KIT (TWO PIECE DRAWBARS)

1. Assemble the non-slotted end of the weight bracket arms to the sides of the drawbar using two 3/8-16 x 1" hex bolts (3), 3/8" lock washers (10) and 3/8-16 hex nuts (12). See figure 1.
2. Assemble the slotted end of the two weight bracket arms (2) to the sides of the drawbar using two 5/16-18 x 1-1/4" hex bolts (4), step bushings (14), 5/16" washers (7) and 5/16" lock nuts (13). See figure 1.
3. Assemble the weight bracket to the weight bracket arms using four 3/8-16 x 1" hex bolts (3), 3/8" lock washers (10) and 3/8-16 hex nuts (12). See figure 1.
4. Assemble wheel weight to weight bracket (1) using two 1/2" x 5-1/2" hex bolts (15), 1" O.D. washers (6), 1/2" lock washers (9) and 1/2-13 hex nuts (11). Tighten securely. See figure 1.

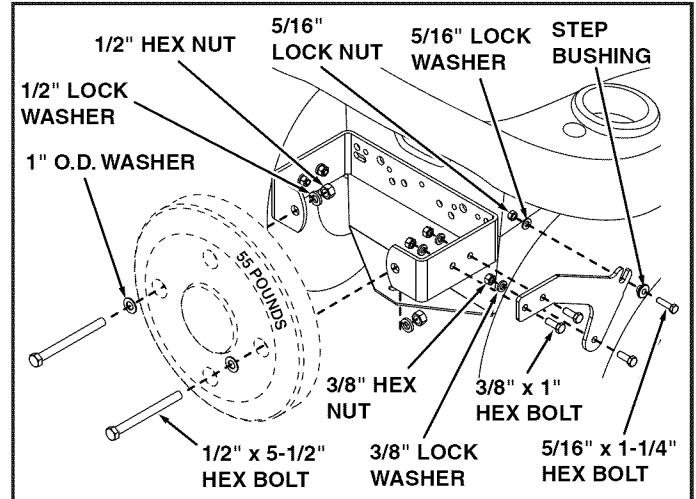


FIGURE 1

ASSEMBLY OF WEIGHT BRACKET KIT (SINGLE PIECE DRAWBARS)

1. Assemble two 1.5" O.D. washers (8) onto two 3/8-16 x 1" hex bolts (3). Insert bolts through drawbar and assemble weight bracket onto bolts. Fasten securely with two 3/8" lock washers (10) and two 3/8-16 hex nuts (12). See figure 2.
2. Assemble wheel weight to weight bracket (1) using two 1/2" x 5-1/2" hex bolts (15), 1" O.D. washers (6), 1/2" lock washers (9) and 1/2-13 hex nuts (11). Tighten securely. See figure 2.

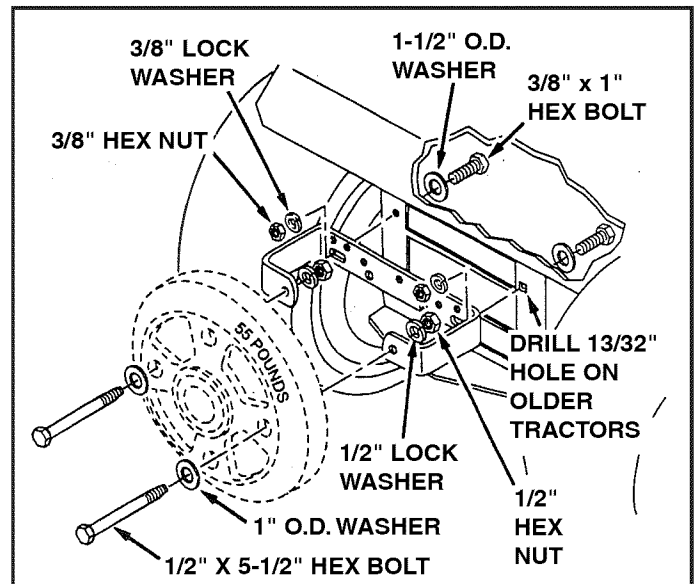


FIGURE 2