

SEARS

DO NOT MAIL REV 0
4-29-92

CRAFTSMAN®

MODEL NUMBER 917.374740 OWNER'S MANUAL

FILE COPY

FILE COPY



FILE COPY

- Assembly
- Operation
- Customer Responsibilities
- Service
- Adjustments
- Repair Parts

Caution:
Read and Follow
all Safety Rules
and Instructions
Before Operating
This Equipment

SEARS, ROEBUCK AND Co., Chicago, IL. 60684 U.S.A.

SAFETY RULES



CAUTION: ALWAYS DISCONNECT SPARK PLUG WIRE AND PLACE WIRE WHERE IT CANNOT CONTACT SPARK PLUG TO PREVENT ACCIDENTAL STARTING WHEN SETTING UP, TRANSPORTING, ADJUSTING OR MAKING REPAIRS.



IMPORTANT

SAFETY STANDARDS REQUIRE OPERATOR PRESENCE CONTROLS TO MINIMIZE THE RISK OF INJURY. YOUR UNIT IS EQUIPPED WITH SUCH CONTROLS. DO NOT ATTEMPT TO DEFEAT THE FUNCTION OF THE OPERATOR PRESENCE CONTROLS UNDER ANY CIRCUMSTANCES.

TRAINING:

- Read this operator's manual carefully. Become familiar with the controls and know how to operate your mower properly. Learn how to quickly stop mower.
- Do not allow children to use your mower. Never allow adults to use mower without proper instructions.
- Keep the area of operation clear of all persons, especially small children and pets.
- Use mower only as the manufacturer intended and as described in this manual.
- Do not operate mower if it has been dropped or damaged in any manner. Always have damage repaired before using your mower.
- Do not use accessory attachments that are not recommended by the manufacturer. Use of such attachments may be hazardous.
- Be aware that the mower blade turns when the engine is running.
- Always stop the engine whenever you leave or are not using your mower, or before crossing driveways, walks, roads, and any gravel-covered areas.
- Never direct discharge of material toward bystanders nor allow anyone near the mower while you are operating it.
- Before cleaning, inspecting, or repairing your mower, stop the engine and make absolutely sure the blade and all moving parts have stopped. Then disconnect the spark plug wire and keep it away from the spark plug to prevent accidental starting.
- Do not continue to run your mower if you hit a foreign object. Follow the procedure outlined above, then repair any damage before restarting and operating you mower.
- Do not change the governor settings or overspeed the engine. Engine damage or personal injury may result.
- Do not operate your mower if it vibrates abnormally. Excessive vibration is an indication of damage; stop the engine, safely check for the cause of vibration and repair as required.
- Do not run the engine indoors. Exhaust fumes are dangerous.
- Never cut grass by pulling the mower towards you. Mow across the face of slopes, never up and down or you might lose your footing. Do not mow excessively steep slopes. Use caution when operating the mower on uneven terrain or when changing directions - maintain good footing.
- Never operate your mower without proper guards, plates, grass catcher or other safety devices in place.

PREPARATION:

- Always thoroughly check the area to be mowed and clear it of all stones, sticks, wires, bones, and other foreign objects. These objects will be thrown by the blade and can cause severe injury.
- Always wear safety glasses or eye shields when starting and while using your mower.
- Dress properly. Do not operate mower when barefoot or wearing open sandals. Wear only solid shoes with good traction when mowing.
- Check fuel tank before starting engine. Do not fill gas tank indoors, when the engine is running or when the engine is hot. Allow the engine to cool for several minutes before filling the gas tank. Clean off any spilled gasoline before starting the engine.
- Always make wheel height adjustments before starting your mower. Never attempt to do this while the engine is running.
- Mow only in daylight or good artificial light.

OPERATION:

- Keep your eyes and mind on your mower and the area being cut. Do not let other interests distract you.
- Do not mow wet or slippery grass. Never run while operating your mower. Always be sure of your footing - keep a firm hold on the handles and walk.
- Do not put hands or feet near or under rotating parts. Keep clear of the discharge opening at all times.

MAINTENANCE AND STORAGE:

- Check the blade and the engine mounting bolts often to be sure they are tightened properly.
- Check all bolts, nuts and screws at frequent intervals for proper tightness to be sure mower is in safe working condition.
- Keep all safety devices in place and working.
- To reduce fire hazard, keep the engine free of grass, leaves or excessive grease and oil.
- Check grass catcher often for deterioration and wear and replace worn bags. Use only replacement bags that are recommended by and comply with specifications of the manufacturer of your mower.
- Always keep a sharp blade on your mower.
- Allow engine to cool before storing in any enclosure.
- Never store mower with fuel in the tank inside a building where fumes may reach an open flame or an ignition source such as a hot water heater, space heater, clothes dryer, etc.



LOOK FOR THIS SYMBOL TO POINT OUT IMPORTANT SAFETY PRECAUTIONS. IT MEANS - ATTENTION!!! BECOME ALERT!!! YOUR SAFETY IS INVOLVED.

CONGRATULATIONS on your purchase of a Sears Craftsman Lawn Mower. It has been designed, engineered and manufactured to give you the best possible dependability and performance.

Should you experience any problems you cannot easily remedy, please contact your nearest Sears Service Center/Department. Sears has competent, well trained technicians and the proper tools to service or repair this unit.

Please read and retain this manual. The instructions will enable you to assemble and maintain your lawn mower properly. Always observe the "SAFETY RULES".

<p>MODEL NUMBER 917.374740</p> <p>SERIAL NUMBER _____</p> <p>DATE OF PURCHASE _____</p> <p>THE MODEL AND SERIAL NUMBERS WILL BE FOUND ON A DECAL ATTACHED TO THE REAR OF THE LAWN MOWER HOUSING.</p> <p>YOU SHOULD RECORD BOTH SERIAL NUMBER AND DATE OF PURCHASE AND KEEP IN A SAFE PLACE FOR FUTURE REFERENCE.</p>
--

PRODUCT SPECIFICATIONS

HORSEPOWER:	5.0
DISPLACEMENT:	10.49 cu. in.
GASOLINE CAPACITY:	1.0 quarts (Unleaded)
OIL (20 oz. Capacity):	SAE 30 (Above 32°F) 5W30 (Below 32°F)
SPARK PLUG (GAP .030 in.): (0.76 mm)	Champion RN4C or Sears STD 360951
VALVE CLEARANCE: Intake:	.004 in.
Exhaust:	.004 in.
SOLID STATE IGNITION AIR GAP:	.0125 in.
BLADE BOLT TORQUE:	35-40 ft.-lbs.

MAINTENANCE AGREEMENT

A Sears Maintenance Agreement is available on this product. Contact your nearest Sears store for details.

CUSTOMER RESPONSIBILITIES

- Read and observe the safety rules.
- Follow a regular schedule in maintaining, caring for and using your lawn mower.
- Follow the instructions under "Customer Responsibilities" and "Storage" sections of this Owner's Manual.

LIMITED TWO YEAR WARRANTY ON CRAFTSMAN POWER MOWER

For two years from date of purchase, when this Craftsman Lawn Mower is maintained, lubricated, and tuned up according to the operating and maintenance instructions in the owner's manual, Sears will repair free of charge any defect in material or workmanship.

If this Craftsman Lawn Mower is used for commercial or rental purposes, this warranty applies for only 90 days from the date of purchase.

This Warranty does not cover:

- Expendable items which become worn during normal use, such as rotary mower blades, blade adapters, belts, air cleaners and spark plug.
- Repairs necessary because of operator abuse or negligence, including bent crankshafts and the failure to maintain the equipment according to the instructions contained in the owner's manual.

WARRANTY SERVICE IS AVAILABLE BY RETURNING THE CRAFTSMAN POWER MOWER TO THE NEAREST SEARS SERVICE CENTER/DEPARTMENT IN THE UNITED STATES. THIS WARRANTY APPLIES ONLY WHILE THIS PRODUCT IS IN USE IN THE UNITED STATES.

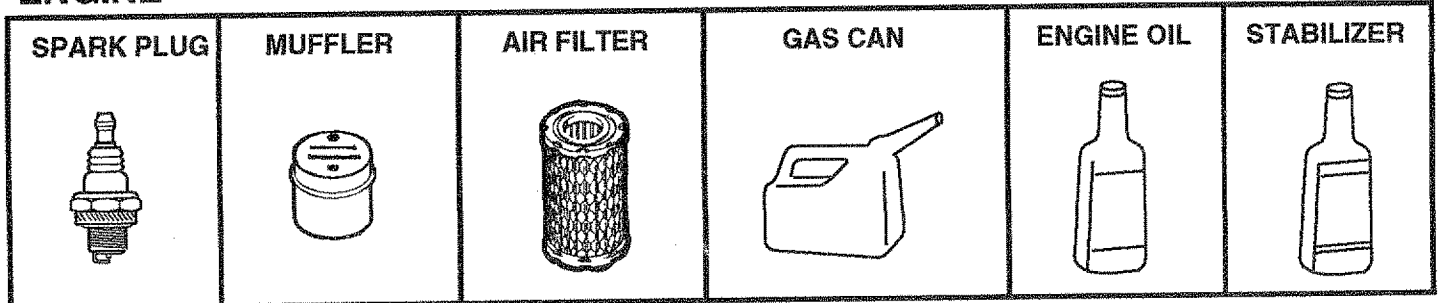
This Warranty gives you specific legal rights, and you may also have other rights which vary from state to state.

SEARS, ROEBUCK AND CO., D/731CR-W SEARS TOWER, CHICAGO, IL 60684

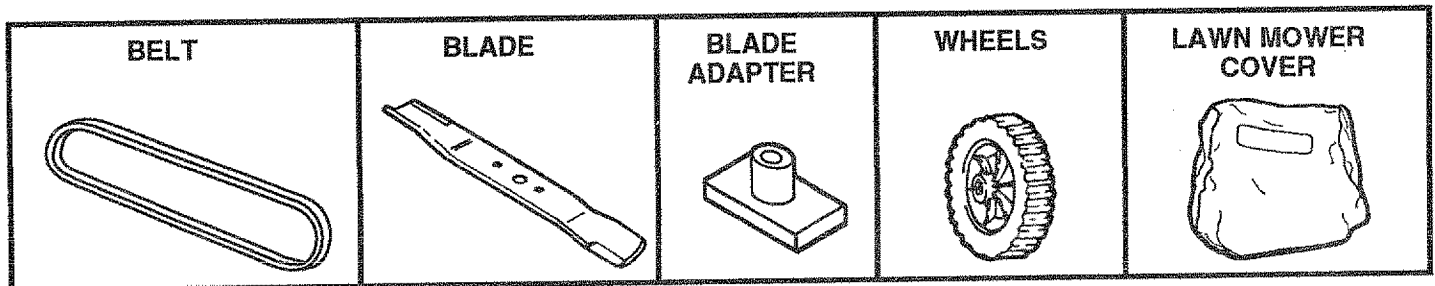
LAWN MOWER ACCESSORIES

These accessories were available when this lawn mower was produced. They are also available at most Sears retail outlets, catalog and service centers. Most Sears stores can also order repair parts for you, when you provide the model number of your lawn mower. Some of these accessories may not apply to your lawn mower.

ENGINE



LAWN MOWER MAINTENANCE



ASSEMBLY

Your lawn mower has been assembled at the factory.

TO REMOVE LAWN MOWER FROM CARTON

- Remove loose parts included with mower.
- Cut down two end corners of carton and lay end panel down flat.
- Remove all packing materials except padding between upper and lower handle and padding holding operator presence control bar to upper handle.
- Roll lawn mower out of carton and check carton thoroughly for additional loose parts.

HOW TO SET UP YOUR LAWN MOWER

TO UNFOLD HANDLE (See Fig. 1)

- Raise handles until lower handle section locks into place in mowing position.
- Raise upper handle section into place on lower handle, remove protective padding and tighten both handle knobs.

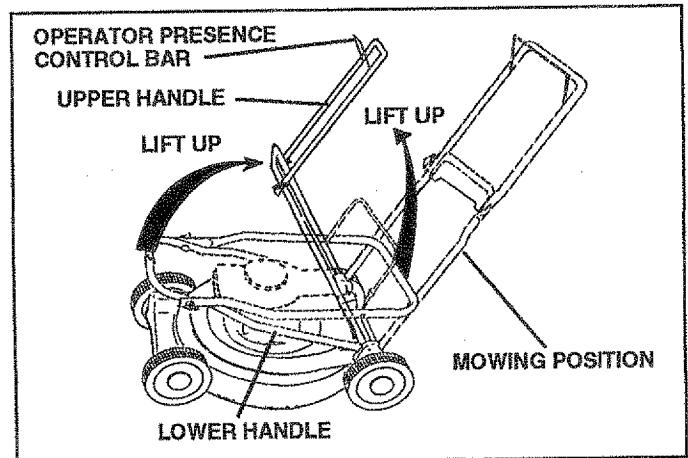


FIG. 1

- Remove handle padding holding operator presence control bar to upper handle.
- Your lawn mower handle can be adjusted for your mowing comfort. Refer to "Adjust Handle" in the Service and Adjustment section of this manual.

ASSEMBLY

TO PREPARE BATTERY (See Fig. 2)

NOTE: Your battery must be charged before you can start your lawn mower.

- Connect battery charger connector (male) to battery connector (female).
- Plug battery charger into 110 volt A.C. outlet.
- Leave battery charger connected for 24 hours before starting your engine for the first time.
- After charging, connect engine connector to battery connector.

Your engine has an integral alternator for partial charging. Connect your battery charger to charge battery as required.

IMPORTANT: THE ENGINE ALTERNATOR WILL NOT CHARGE A DISCHARGED BATTERY.

At the end of the mowing season the battery should be charged for 48 hours to protect the battery during winter storage.

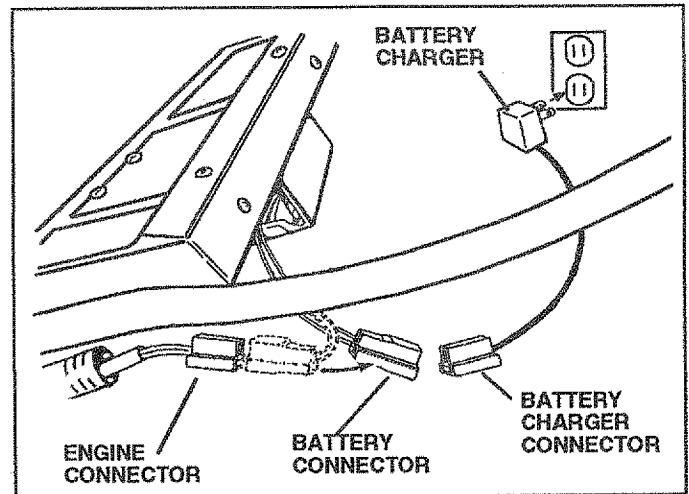


FIG. 2

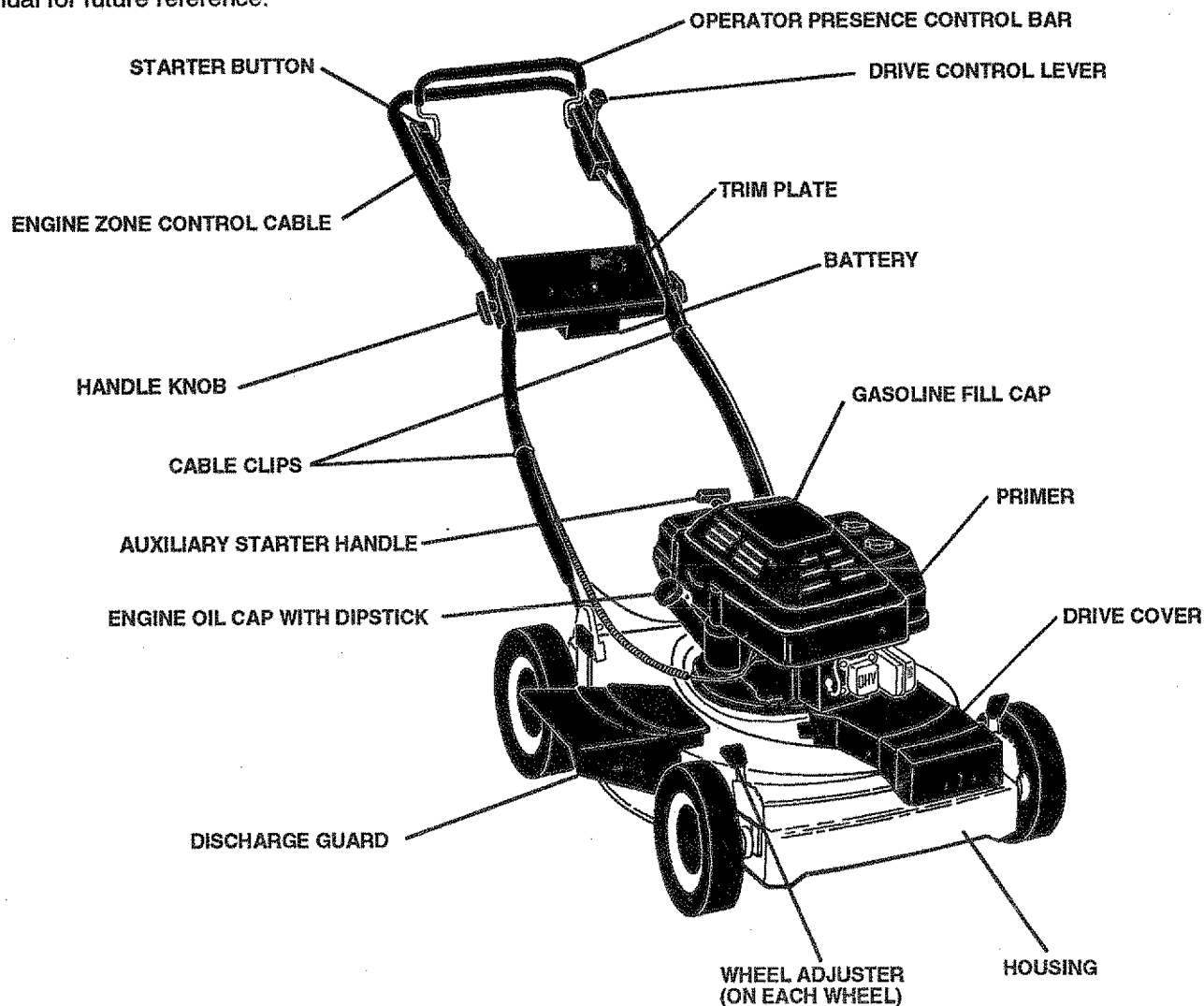


CAUTION: Always disconnect the engine connector from the battery connector to prevent accidental starting when transporting or storing your lawn mower after the season.

OPERATION

KNOW YOUR LAWN MOWER

READ THIS OWNER'S MANUAL AND SAFETY RULES BEFORE OPERATING YOUR LAWN MOWER. Compare the illustrations with your lawn mower to familiarize yourself with the location of various controls and adjustments. Save this manual for future reference.



MEETS CPSC SAFETY REQUIREMENTS

Sears rotary walk-behind power lawn mowers conform to the safety standards of the American National Standards Institute and the U.S. Consumer Product Safety Commission. The blade turns when the engine is running.

PRIMER - pumps additional fuel from the carburetor to the cylinder for use when starting a cold engine.

AUXILIARY STARTER HANDLE - used for starting the engine.

DRIVE CONTROL LEVER - used to engage power-propelled forward motion of lawn mower.

STARTER BUTTON - used for starting the engine.

OPERATION

HOW TO USE YOUR LAWN MOWER ENGINE SPEED

The engine speed was set at the factory for optimum performance. Speed is not adjustable.

ENGINE ZONE CONTROL



CAUTION: Federal regulations require an engine control to be installed on this lawn mower in order to minimize the risk of blade contact injury. Do not under any circumstances attempt to defeat the function of the operator control. The blade turns when the engine is running.

- Your lawn mower is equipped with an operator presence control bar which requires the operator to be positioned behind the lawn mower handle to start and operate the lawn mower.

DRIVE CONTROL (See Fig. 3)

- Self-propelling is controlled by holding the operator presence control bar down to the handle and pushing the drive control lever forward until it clicks; then release the lever.
- Forward motion will stop when the operator presence control bar is released. To stop forward motion without stopping engine, release the operator presence control bar slightly until the drive control disengages. Hold operator presence control bar down to handle to continue mowing without self-propelling.
- To keep drive control engaged when turning corners, push down on handle and lift front wheels off ground while turning lawn mower.

TO ADJUST CUTTING HEIGHT (See Fig. 4)

- Raise wheels for low cut and lower wheels for high cut.
- Wheels are set in low cut for shipping. Adjust cutting height to suit your requirements. Medium position is best for most lawns.
- To change cutting height, squeeze adjuster lever toward wheel. Move wheel up or down to suit your requirements. Be sure all wheels are in the same setting.

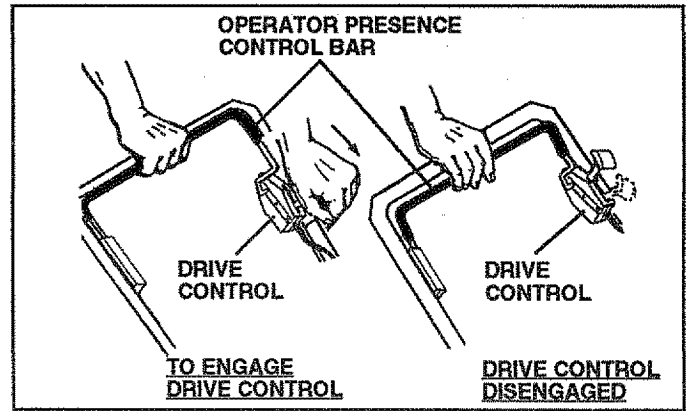


FIG. 3

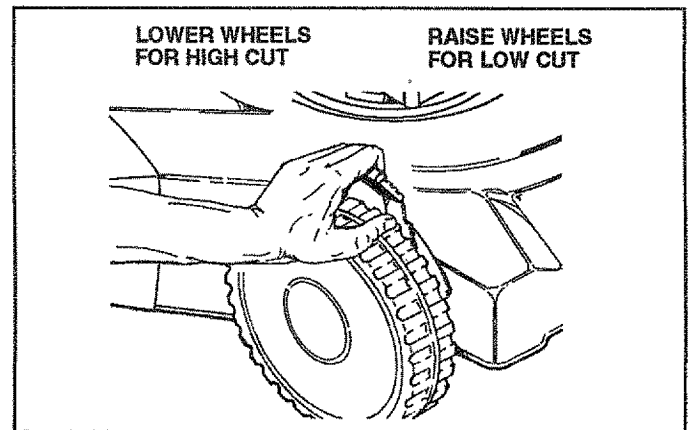


FIG. 4

OPERATION

BEFORE STARTING ENGINE

OIL (See Fig. 5)

A 20 oz. bottle of Pennzoil SAE 30 oil is included with your new lawn mower.

- Remove engine oil cap and fill to the FULL line on the dipstick.
- Use 20 ozs. of oil. For type and grade of oil to use, see "ENGINE" in Customer Responsibilities section of this manual.
- **POUR OIL SLOWLY. DO NOT OVER FILL.**
- Check oil level before each use. Add oil if needed. Fill to FULL line on dipstick.
- To read proper level, tighten engine oil cap each time.
- Reinstall engine oil cap and tighten.
- After the first two (2) hours of mowing, change the oil, and every 25 hours thereafter. You may need to change the oil more often under dusty, dirty conditions.

GAS (See Fig. 5)

- Fill gasoline tank with fresh, clean unleaded gasoline. **DO NOT USE PREMIUM GASOLINE. BE CAREFUL NOT TO OVER FILL TANK.**

WARNING: Experience indicates that alcohol blended fuels (called gasohol or using ethanol or methanol) can attract moisture which leads to separation and formation of acids during storage. Acidic gas can damage the fuel system of an engine while in storage.

To avoid engine problems, the fuel system should be emptied before storage for 30 days or longer. Drain the gas tank, start the engine and let it run until the fuel lines and carburetor are empty. Use fresh fuel next season. See Storage instructions for additional information.

Never use engine or carburetor cleaner products in the fuel tank or permanent damage may occur.

TO START ENGINE (See Fig. 6)

- To start a cold engine, push primer three (3) times before trying to start. Use a firm push. This step is not usually necessary when starting an engine which has already run for a few minutes.
- Hold operator presence control bar down to the handle and push starter button.



CAUTION: Do not crank engine more than five (5) seconds between each time you try to start. Wait 5 to 10 seconds between each time you try to start.

- To start engine using the rope starter, follow the steps above. Exchange the use of the starter button for the starter rope. Do not allow starter rope to snap back.
- To STOP engine, release operator presence control bar.

NOTE: In cooler weather it may be necessary to repeat priming steps. In warmer weather over priming may cause flooding and engine will not start. If you do flood engine, wait a few minutes before attempting to start and **DO NOT** repeat priming steps.

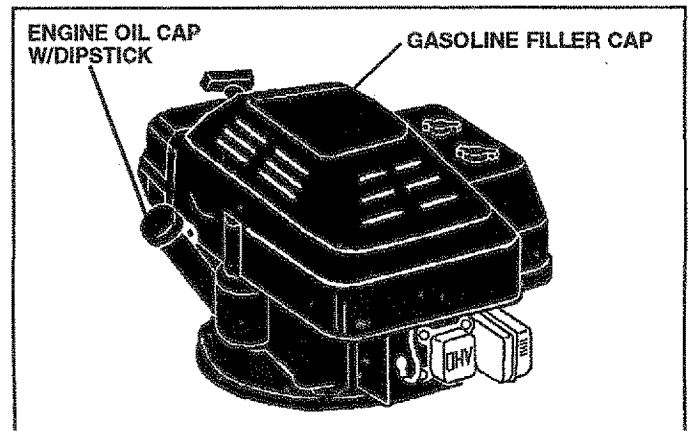


FIG. 5

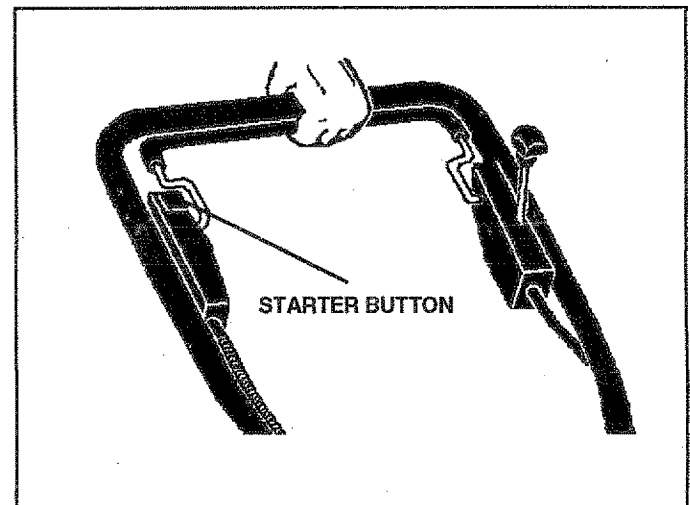


FIG. 6

MOWING TIPS

- Under certain conditions, such as very tall grass, it may be necessary to raise the height of cut to reduce pushing effort and to keep from overloading the engine and leaving clumps of grass clippings.
- For extremely heavy cutting, reduce the width of cut and raise the rear of the lawn mower housing one (1) wheel adjuster setting higher than the front for better discharge of grass.
- For side discharge mowers, cutting in a counter-clockwise direction, starting at the outside of the area to be cut, spreads grass clippings more evenly and puts less load on the engine. To keep clippings off of walkways, flower beds, etc., make the first cuts in a clockwise direction.
- Keep top of engine around starter clear and clean of grass clippings and chaff. This will help engine air flow and extend engine life.

CUSTOMER RESPONSIBILITIES

MAINTENANCE SCHEDULE		SERVICE INTERVALS						SERVICE DATES					
		BEFORE EACH USE	AFTER EACH USE	FIRST 2 HOURS	EVERY 10 HOURS	EVERY 25 HOURS	BEFORE SEASON						
MOWER	Check for Loose Fasteners	✓					✓						
	Clean/Inspect Grass Catcher	✓	✓				✓						
	Clean Lawn Mower		✓				✓						
	Inspect Mower Blades				✓								
	Replace Mower Blades					✓ ³							
	Lubricate Pivot Points					✓		✓					
	Disconnect Battery (Charge 48 hours at end of season)							✓					
ENGINE	Check Engine Oil Level	✓											
	Change Engine Oil		✓		✓ ^{1,2}								
	Clean Air Filter				✓ ²								
	Inspect Muffler				✓								
	Replace Spark Plug						✓						
	Replace Air Filter Paper Cartridge						✓ ^{1,2}						

1 - Change more often when operating under a heavy load or in high ambient temperatures.

2 - Service more often when operating in dirty or dusty conditions.

3 - Replace blades more often when mowing in sandy soil.

GENERAL RECOMMENDATIONS

The warranty on this lawn mower does not cover items that have been subjected to operator abuse or negligence. To receive full value from the warranty, operator must maintain mower as instructed in this manual.

Some adjustments will need to be made periodically to properly maintain your unit.

All adjustments in the Service and Adjustments section of this manual should be checked at least once each season.

- Once a year, replace the spark plug, clean or replace air filter element and check blade for wear. A new spark plug and clean/new air filter element assures proper air-fuel mixture and helps your engine run better and last longer.
- Follow the maintenance schedule in this manual.

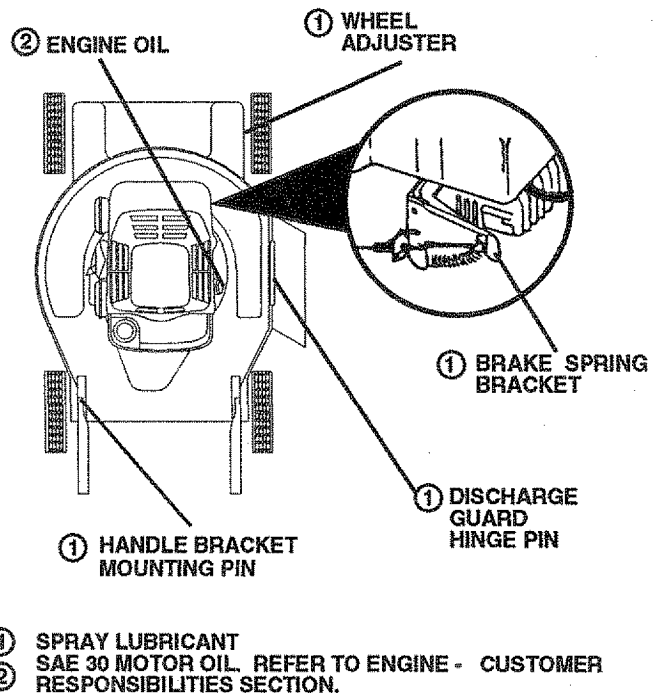
BEFORE EACH USE

- Check engine oil level.
- Check for loose fasteners.

LUBRICATION

Keep unit well lubricated (See "LUBRICATION CHART").

LUBRICATION CHART



IMPORTANT: DO NOT OIL OR GREASE PLASTIC WHEEL BEARINGS. VISCOUS LUBRICANTS WILL ATTRACT DUST AND DIRT THAT WILL SHORTEN THE LIFE OF THE SELF LUBRICATING BEARINGS. IF YOU FEEL THEY MUST BE LUBRICATED, USE ONLY A DRY, POWDERED GRAPHITE TYPE LUBRICANT SPARINGLY.

CUSTOMER RESPONSIBILITIES

LAWN MOWER

Always observe safety rules when performing any maintenance.

TIRES

- Keep tires free of gasoline, oil, or insect control chemicals which can harm rubber.
- Avoid stumps, stones, deep ruts, sharp objects and other hazards that may cause tire damage.

BLADE CARE

For best results, mower blade must be kept sharp. Replace bent or damaged blades.

TO REMOVE BLADE (See Fig. 7)

- Remove spark plug wire from spark plug and place wire where it cannot come in contact with spark plug.
- Turn lawn mower on its side. Make sure air filter and carburetor are up.
- Use a wood block between blade and mower housing to prevent blade from turning when removing blade bolt.
- Protect your hands with gloves and/or wrap blade with heavy cloth.
- Remove blade bolt by turning counter-clockwise. Use a 9/16" box or open-end wrench.
- Remove blade and attaching hardware (bolt, lock washer and hardened washer).

NOTE: Remove the blade adapter and spacer and check the key on crankshaft. The key must be in good condition to work properly. Replace adapter if damaged.

TO REPLACE BLADE (See Fig. 7)

- Position the blade adapter and spacer on the engine crankshaft. Be sure adapter and key on crankshaft are aligned.

IMPORTANT: BLADE BOLT IS GRADE 8 HEAT TREATED. MAKE SURE SPACER IS POSITIONED CORRECTLY INSIDE HUB OF BLADE ADAPTER. IF IT IS NOT POSITIONED CORRECTLY, THE BLADE WILL BE OUT OF LOCATION AND COULD AFFECT THE CUTTING HEIGHT.

- Position blade on the blade adapter.
- Be sure the word TOP (stamped on the blade) is toward the engine.
- Install the blade bolt with the lock washer and hardened washer into blade adapter and crankshaft.
- Use block of wood between blade and lawn mower housing and tighten the blade bolt, turning clockwise.
- The recommended tightening torque is 35-40 ft. lbs.



CAUTION: A loose blade can be dangerous.

Use only Sears authorized replacement blade to get the best cutting results.

NOTE: We do not recommend sharpening blade - but if you do, be sure the blade is balanced.

TO SHARPEN BLADE

Care should be taken to keep the blade balanced. An unbalanced blade will cause excessive vibration when running and eventual damage to lawn mower or engine.

- The blade can be sharpened with a file or on a grinding wheel. Do not attempt to sharpen while on the mower.

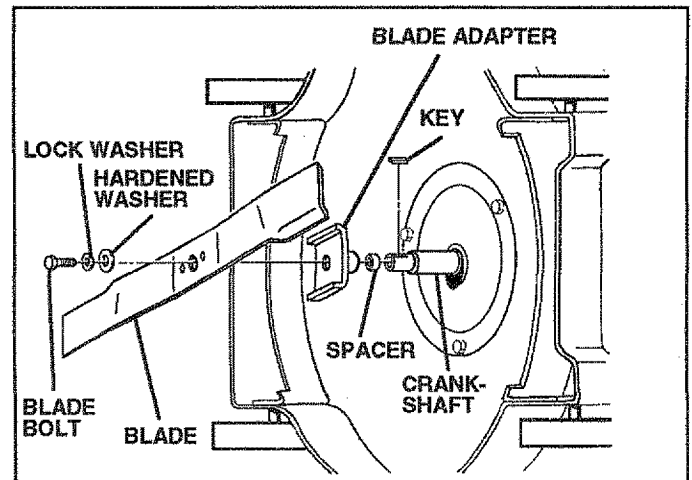


FIG. 7

- To check blade balance, drive a nail into a beam or wall. Leave about one inch of the straight nail exposed. Place center hole of blade over the head of the nail. If blade is balanced, it should remain in a horizontal position. If either end of the blade moves downward, sharpen the heavy end until the blade is balanced.

GEAR CASE

- To keep your drive system working properly, the gear case and area around the drive should be kept clean and free of trash build-up. Clean under the drive cover twice a season.
- The gear case is filled with lubricant to the proper level at the factory. The only time the lubricant needs attention is if service has been performed on the gear case.
- If lubricant is required, use only Texaco Starplex Premium Grease, part no. 750355. Do not substitute.

DRIVE WHEELS

Check front drive wheels each time before you mow to be sure they move freely.

The wheels not turning freely means trash, grass cuttings, etc. are in the drive wheel area and must be cleaned to free drive wheels.

If necessary to clean the drive wheels, check both front wheels.

- Remove hubcaps, hairpin cotter and washers.
- Remove wheels from wheel adjusters.
- Remove any trash or grass cuttings from inside the dust cover, pinion and/or drive wheel gear teeth.
- Put wheels back in place.
- If after cleaning, the drive wheels do not turn freely, contact your nearest Sears Service Center.

GRASS CATCHER

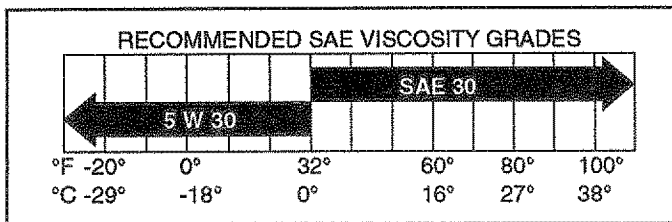
(If purchased as an accessory)

- The grass catcher may be hosed with water, but must be dry when used.
- Check your grass catcher often for damage or deterioration. Through normal use it will wear. If catcher needs replacing, replace only with a manufacturer approved replacement catcher from Sears. Give the lawn mower model number when ordering.

CUSTOMER RESPONSIBILITIES

ENGINE LUBRICATION

Use only high quality detergent oil rated with API service classification SG. Select the oil's SAE viscosity grade according to your expected operating temperature.



NOTE: Although multi-viscosity oils (5W30, 10W30 etc.) improve starting in cold weather, these multi-viscosity oils will result in increased oil consumption when used above 32°F. Check your engine oil level more frequently to avoid possible engine damage from running low on oil. Change the oil after the first two hours of operation and every 25 hours thereafter or at least once a year if the lawn mower is not used for 25 hours in one year. Check the crankcase oil level before starting the engine and after each five (5) hours of continuous use. Tighten oil plug securely each time you check the oil level.

TO CHANGE ENGINE OIL (See Fig. 8)

- Remove engine oil cap; lay aside on a clean surface.
- Tip lawn mower on its side and drain oil into a suitable container. Rock lawn mower back and forth to remove any oil trapped inside of engine.
- Wipe off any spilled oil on lawn mower and on side of engine.
- Fill engine with oil. Fill only to the "FULL" line on the dipstick. **DO NOT OVER FILL.**
- Replace engine oil cap.

AIR FILTER

Your engine will not run properly and may be damaged by using a dirty air filter.

Replace the air filter every year, more often if you mow in very dusty, dirty conditions. Do not wash air filter.

TO CHANGE AIR FILTER (See Fig. 9)

- Loosen and remove the two (2) plastic cap nuts on top of air cleaner cover.
- Lift up and rotate cover to unhook latch on the front end of cover.
- Loosen and remove wing nut and plate holding filter in place.
- Lift up on air filter element and remove.
- Clean off the face of air cleaner seal on top of carburetor. Be careful to keep trash and dirt from dropping into carburetor.
- Put new filter in place.
- Replace plate and wing nut.
- Replace air filter cover. Be sure to hook the front end into the engine blower housing.
- Replace two (2) cap nuts and tighten securely.

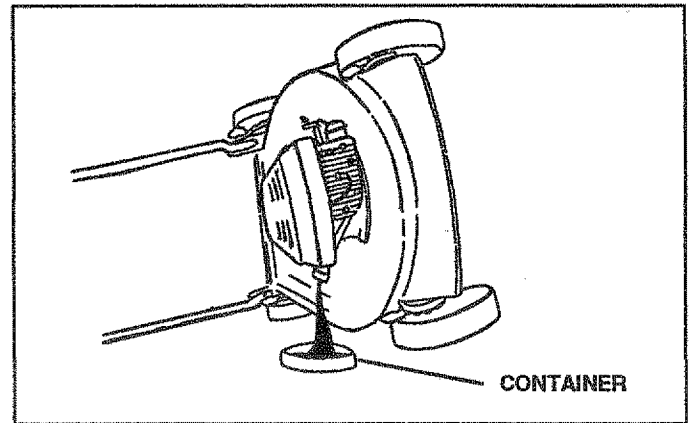


FIG. 8

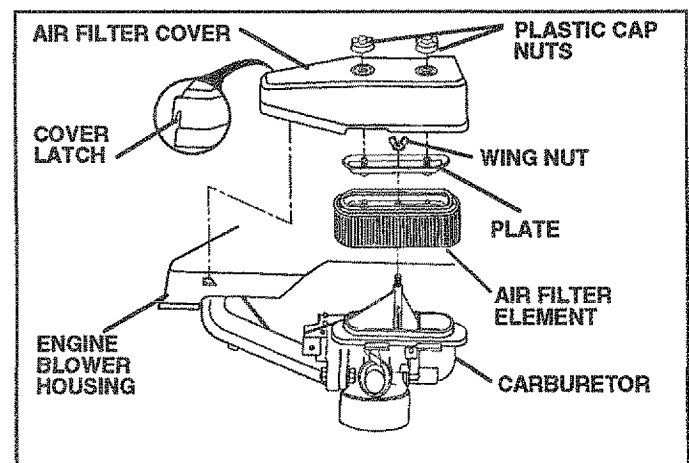


FIG. 9

MUFFLER

Inspect and replace corroded muffler as it could create a fire hazard and/or damage.

SPARK PLUG

Change your spark plug each year to make your engine start easier and run better. Set spark plug gap at .030 inch.

CLEANING

Clean the underside of your mower after each use.

- Turn lawn mower on its side. Make sure air filter and carburetor are up. Clean the underside of your lawn mower by scraping to remove build-up of grass and trash.
- Clean engine often to keep trash from accumulating. A clogged engine runs hotter and shortens engine life.
- Keep finished surfaces and wheels free of all gasoline, oil, etc.
- We **DO NOT** recommend using a garden hose to clean lawn mower unless the electrical system, muffler, air filter and carburetor are covered to keep water out. Water in engine can result in shortening engine life.

CLEAN UNDER DRIVE COVER

Clean under drive cover at least twice a season. Scrape underside of cover with putty knife or similar tool to remove any build-up of trash or grass on underside of drive cover.

SERVICE AND ADJUSTMENTS



CAUTION: BEFORE PERFORMING ANY SERVICE OR ADJUSTMENTS:

- Release control bar.
- Make sure the blade and all moving parts have completely stopped.
- Disconnect spark plug wire from spark plug and place where it cannot come in contact with plug.

LAWN MOWER

TO ADJUST CUTTING HEIGHT

See "TO ADJUST CUTTING HEIGHT" in the Operation section of this manual.

DISCHARGE GUARD

The discharge guard, attached to the discharge opening of your lawn mower, is provided to prevent the possibility of injury resulting from objects being thrown out of the discharge opening into the operator mowing position. If the discharge guard becomes damaged, it should be replaced.

TO REMOVE/REPLACE DRIVE BELT

(See Fig. 10)

- Remove drive cover. Remove belt by pushing down on gear case pulley.
- Turn lawn mower on its side with carburetor and fuel cap up.
- Remove blade.
- Remove belt from engine pulley on crankshaft.
- Install new belt by reversing above steps.
- Always use factory approved belt to assure fit and long life.

TO ADJUST DRIVE CONTROL CABLE

(See Fig. 11)

A drive control cable that needs adjustment will keep your lawn mower from self-propelling properly and can also cause gear case components to wear out sooner.

- Remove drive cover.
- Loosen cable clamp screw "A" and nuts "B" and "C".
- Hold down operator presence control bar to handle and engage drive control.
- Move shifter arm to drive position while rotating front wheels to be sure jaw clutch is engaged. Pull threaded sleeve with pliers. Do not pull on control cable.
- Tighten nut "C" until sleeve is snug.
- Tighten screw "A" and nut "B".
- Push lawn mower back and forth to be sure gear case is engaged.
- Replace drive cover.
- Release operator presence control bar.

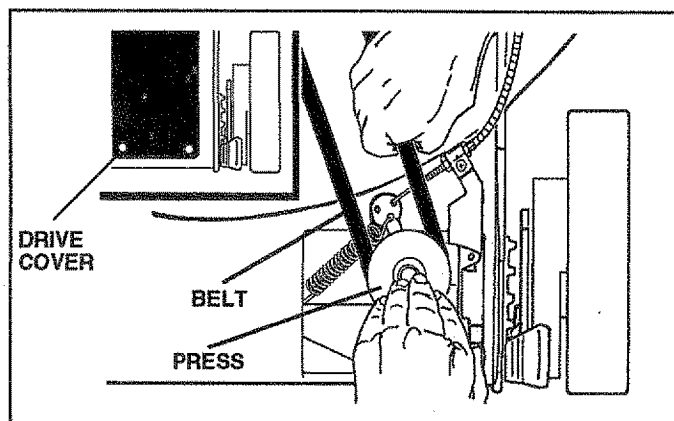


FIG. 10

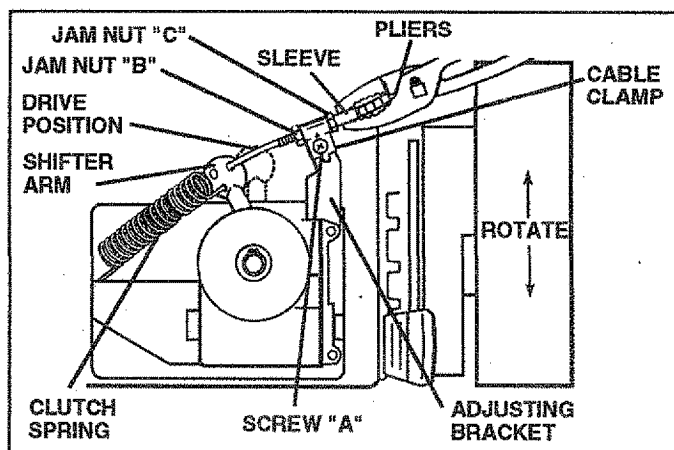


FIG. 11

SERVICE AND ADJUSTMENTS

TO ADJUST HANDLE (See Figs. 12 Thru 14)

Your lawn mower handle can be raised or lowered for your mowing comfort. Four (4) positions are available: high, medium high, medium low and low. Handles are shipped mounted in the medium low position.

- To change from medium low to medium high position, the upper and lower handle sections will have to be turned over (See Fig. 12B).
- Remove the controls and operator presence control bar from the upper handle.
- Remove all parts attached to the lower handle.
- Remove hairpin cotters.
- Disconnect the lower handle from the handle brackets (See Fig. 14).
- Turn the handle over and reassemble the hairpin cotters that have been removed.
- Reassemble the parts to the lower handle.
- Reassemble the controls and the operator presence control bar to the upper handle.



CAUTION: The operator presence control bar must pivot freely to permit blade brake engagement when control bar is released. Do not overtighten the fasteners holding the controls to the upper handle.

- To change from medium low to high position only the upper handle section will have to be turned over (See Fig. 13A).
- To change from medium low to low position, only the lower handle section will have to be turned over (See Fig. 13B).

ENGINE

ENGINE SPEED

Your engine speed has been factory set. Do not attempt to increase engine speed or it may result in personal injury. If you believe that engine is running too fast or too slow, take your mower to an authorized Sears Service Center for repair and adjustment.

CARBURETOR

Your carburetor has been preset at the factory and is not adjustable.

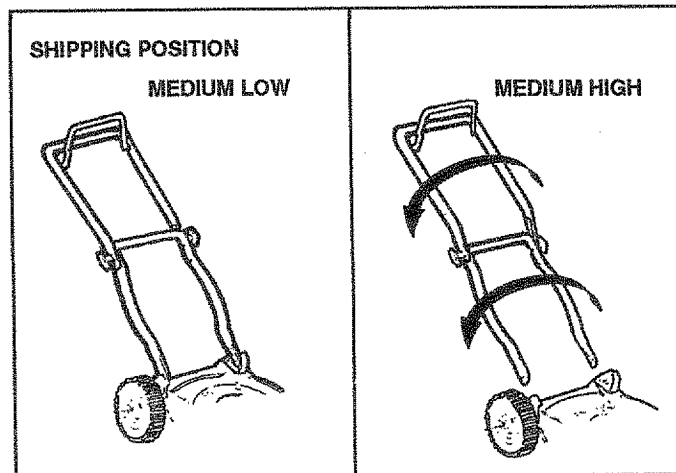


FIG. 12A

FIG. 12B

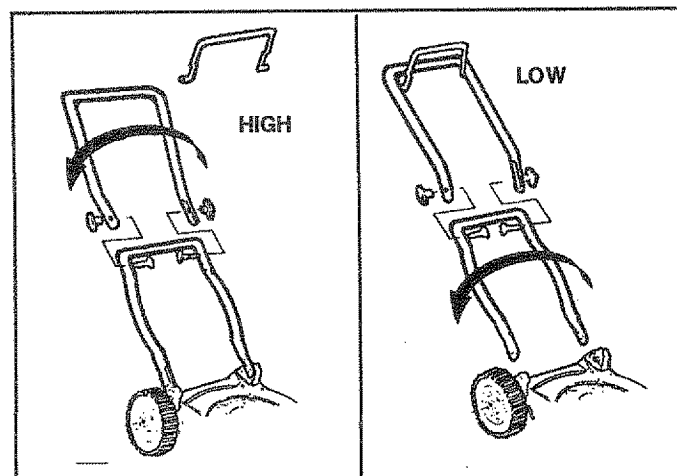


FIG. 13A

FIG. 13B

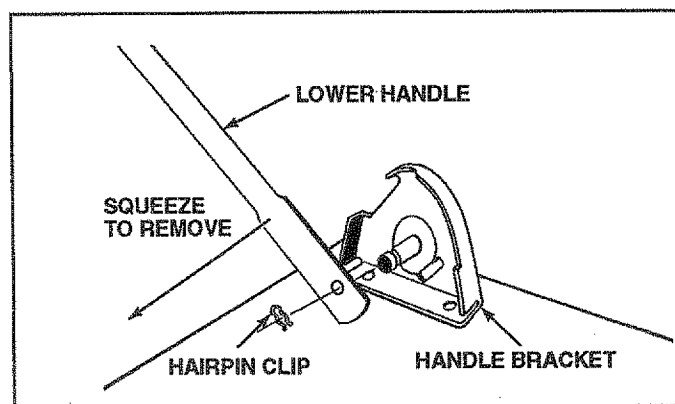


FIG. 14

STORAGE

Immediately prepare your lawn mower for storage at the end of the season or if the unit will not be used for 30 days or more.

LAWN MOWER

When lawn mower is to be stored for a period of time, clean it thoroughly, remove all dirt, grease, leaves, etc. Store in a clean, dry area.

- Clean entire lawn mower (See "CLEANING" in the Customer Responsibilities section of this manual).
- Lubricate as shown in the Customer Responsibilities section of this manual.
- Be sure that all nuts, bolts, screws, and pins are securely fastened. Inspect moving parts for damage, breakage and wear. Replace if necessary.
- Touch up all rusted or chipped paint surfaces; sand lightly before painting.

HANDLE (See Fig. 15)

You can fold your lawn mower handle for storage.

- Squeeze the bottom ends of the lower handle toward each other until the lower handle clears the handle bracket, then move handle forward.
- Loosen upper handle mounting bolts enough to allow upper handle to be folded back.

IMPORTANT: WHEN FOLDING THE HANDLE FOR STORAGE OR TRANSPORTATION, BE SURE TO FOLD THE HANDLE AS SHOWN OR YOU MAY DAMAGE THE CONTROL CABLES.

- When setting up your handle from the storage position, the lower handle will automatically lock into the mowing position.

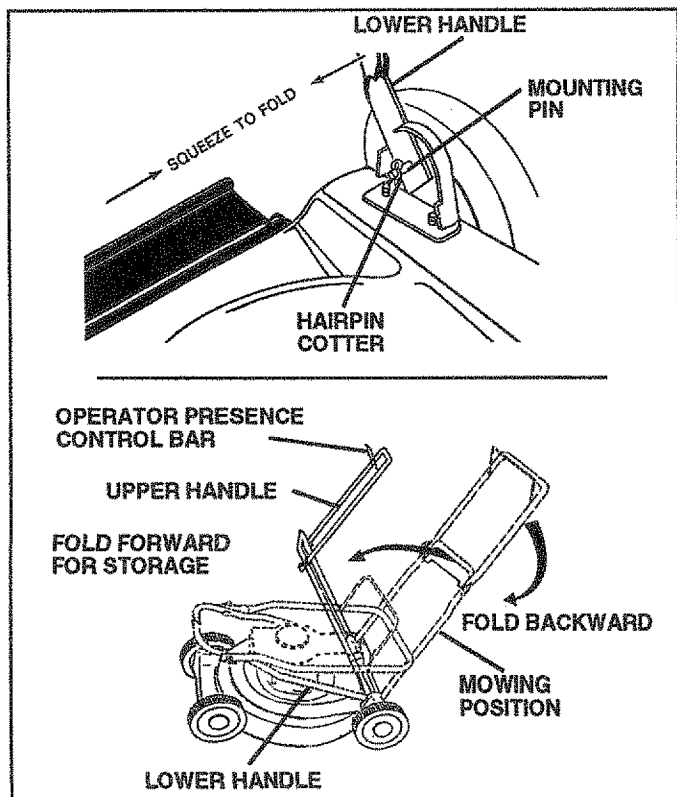


FIG. 15

ENGINE FUEL SYSTEM

IMPORTANT: IT IS IMPORTANT TO PREVENT GUM DEPOSITS FROM FORMING IN ESSENTIAL FUEL SYSTEM PARTS SUCH AS CARBURETOR, FUEL FILTER, FUEL HOSE, OR TANK DURING STORAGE. ALSO, EXPERIENCE INDICATES THAT ALCOHOL BLENDED FUELS (CALLED GASOHOL OR USING ETHANOL OR METHANOL) CAN ATTRACT MOISTURE WHICH LEADS TO SEPARATION AND FORMATION OF ACIDS DURING STORAGE. ACIDIC GAS CAN DAMAGE THE FUEL SYSTEM OF AN ENGINE WHILE IN STORAGE.

- Drain the fuel tank.
- Start the engine and let it run until the fuel lines and carburetor are empty.
- Never use engine or carburetor cleaner products in the fuel tank or permanent damage may occur.
- Use fresh fuel next season.

NOTE: Fuel stabilizer is an acceptable alternative in minimizing the formation of fuel gum deposits during storage. Add stabilizer to gasoline in fuel tank or storage container. Always follow the mix ratio found on stabilizer container. Run engine at least 10 minutes after adding stabilizer to allow the stabilizer to reach the carburetor. Do not drain the gas tank and carburetor if using fuel stabilizer.

ENGINE OIL

Drain oil (with engine warm) and replace with clean engine oil. (See "ENGINE" in the Customer Responsibilities section of this manual).

CYLINDER

- Remove spark plug.
- Pour one ounce (29 ml) of oil through spark plug hole into cylinder.
- Pull starter handle slowly a few times to distribute oil.
- Replace with new spark plug.

OTHER

- Do not store gasoline from one season to another.
- Replace your gasoline can if your can starts to rust. Rust and/or dirt in your gasoline will cause problems.
- If possible, store your unit indoors and cover it to give protection from dust and dirt.
- Cover your unit with a suitable protective cover that does not retain moisture. Do not use plastic. Plastic cannot breathe which allows condensation to form and will cause your unit to rust.

IMPORTANT: NEVER COVER MOWER WHILE ENGINE AND EXHAUST ARE STILL WARM.



CAUTION: Never store the lawn mower with gasoline in the tank inside a building where fumes may reach an open flame or spark. Allow the engine to cool before storing in any enclosure.

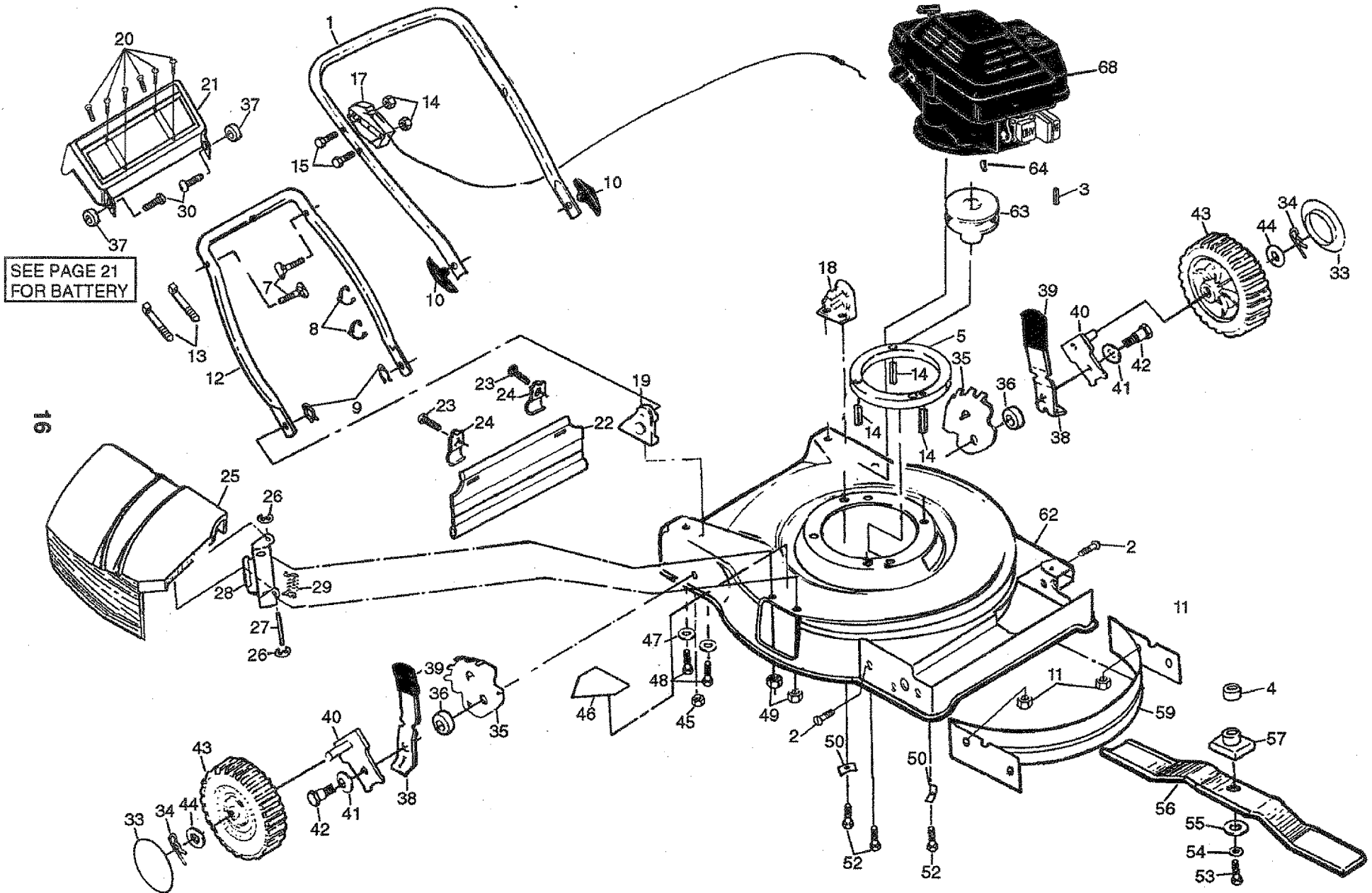
- At the end of the mowing season the battery should be charged for 48 hours to protect the battery during winter storage.



CAUTION: Always disconnect the engine connector from the battery connector to prevent accidental starting when transporting or storing your lawn mower after the season.

REPAIR PARTS

CRAFTSMAN 22" ROTARY LAWN MOWER - MODEL NO. 917.374740



REPAIR PARTS

CRAFTSMAN 22" ROTARY LAWN MOWER - MODEL NO. 917.374740

KEY PART NO.	PART NO.	DESCRIPTION
1	850989X479	Upper Handle
2	74100412	Flat Head Screw
3	74969	Square Key
5	850988	Spacer Assembly (Includes Key No. 14)
7	131959	Handle Bolt
8	85827	Cable Clip
9	51793	Hairpin Cotter
10	63688	Handle Knob
11	63601	Locknut
12	84682X479	Lower Handle
13	66426	Wire Tie
14	850987	Engine Bushing
15	851185	Screw 1/4-20 x 2.75
17	136920	Engine Control
18	135152X417	Handle Bracket Assembly (Left)
19	135151X417	Handle Bracket Assembly (Right)
20	36953	Screw
21	87295	Trim Plate
22	128797	Rear Deflector
23	750097	Hex Washer Head Screw #10-24 x 1/2
24	87584X004	Deflector Bracket
25	750149	Discharge Guard
26	12000014	E-Ring
27	87590	Hinge Rod
28	87593	Housing Bracket
29	87589	Torsion Spring
30	85825	Screw
33	77400	Hubcap
34	85179	Retainer Clip
35	850955	Wheel Adjusting Bracket
36	84920	Spacer
37	85529	Nylon Bushing
38	850855X004	Selector Spring
39	87877	Selector Knob
40	85021X004	Axle Arm Assembly
41	62335	Belleville Washer

KEY PART NO.	PART NO.	DESCRIPTION
42	84921	Shoulder Bolt
43	87748	Wheel & Tire Assembly
44	52160	Washer
45	751592	Locknut 3/18-16
46	85463	Danger Decal
47	59289	Flat Washer
48	55187	Thread Cutting Screw 5/16-18 x 3/4
49	53490	Locknut
50	851201X004	Washer
52	850999	Hex Head Thread Rolling Screw 3/8- 16 x 1-1/8
53	850859	Hex Head Screw 3/8-24 x 1-3/8 (Grd. 8)
54	850263	Helical Lockwasher
55	851074	Hardened Washer
56	103524X	Blade 22"
57	136919X004	Blade Adapter
59	132251X479	Front Baffle
60	134027	Rear Baffle (Not Shown)
62	48192	Lawn Mower Housing (Incl. Ref. #46, 59 & 60)
63	85543	Engine Pulley
64	87677	Hi-Pro Key #HP 505
68	750564	Engine - Craftsman Model No. 143.404112
	136856	Owner's Manual

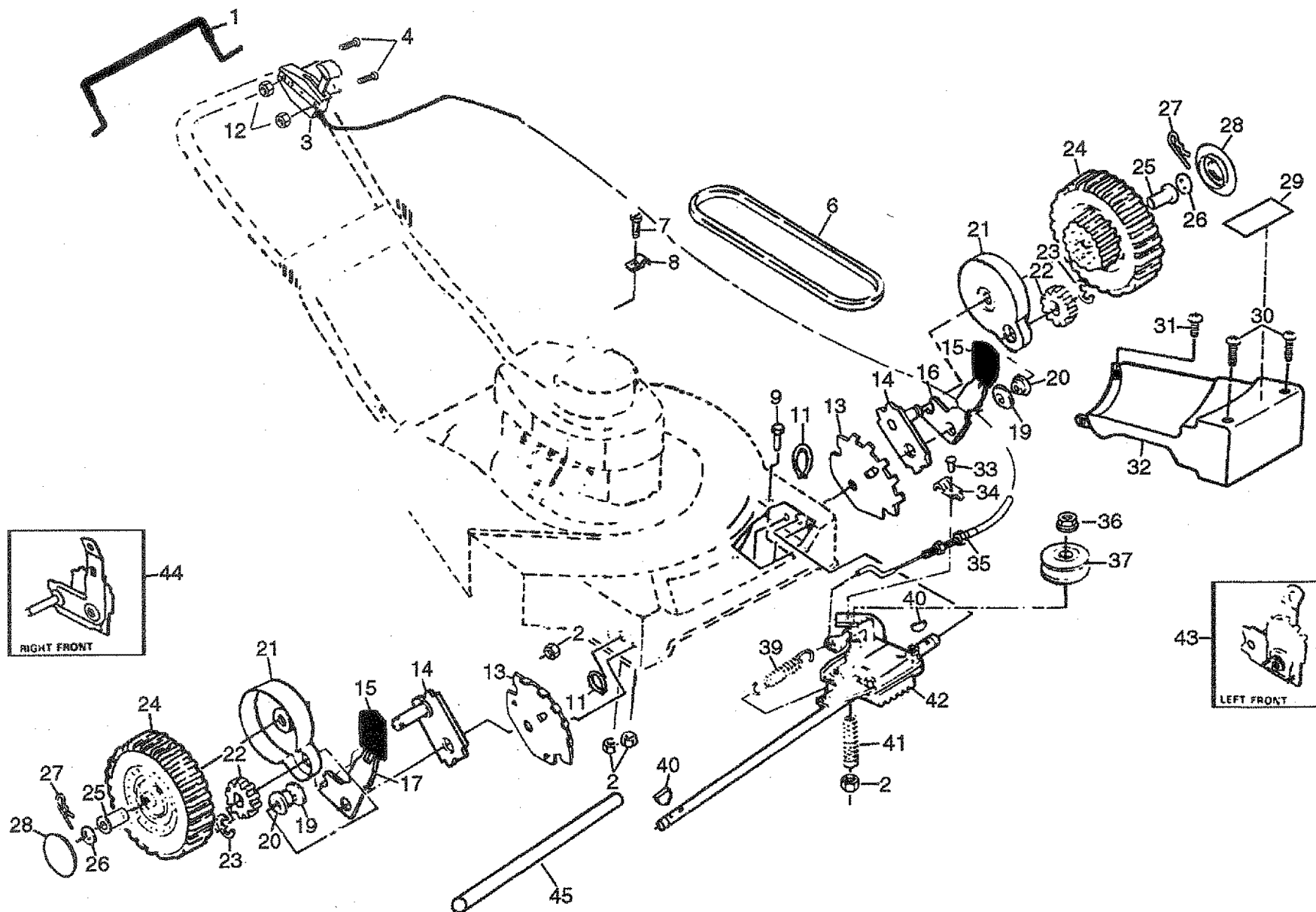
Available accessories not included with lawn mower:

<u>71</u>	33072	Grass Catcher
<u>71</u>	33623	Gas Can (2.5 gal.)
<u>71</u>	33500	Fuel Stabilizer
<u>71</u>	33300	SAE 30W Oil (20 oz.)
<u>71</u>	33722	High Wheel Kit
<u>71</u>	33316	Mower Cover
-----		Mulcher Kit not available for this model

REPAIR PARTS

CRAFTSMAN 22" ROTARY LAWN MOWER - MODEL NO. 917.374740

18



REPAIR PARTS

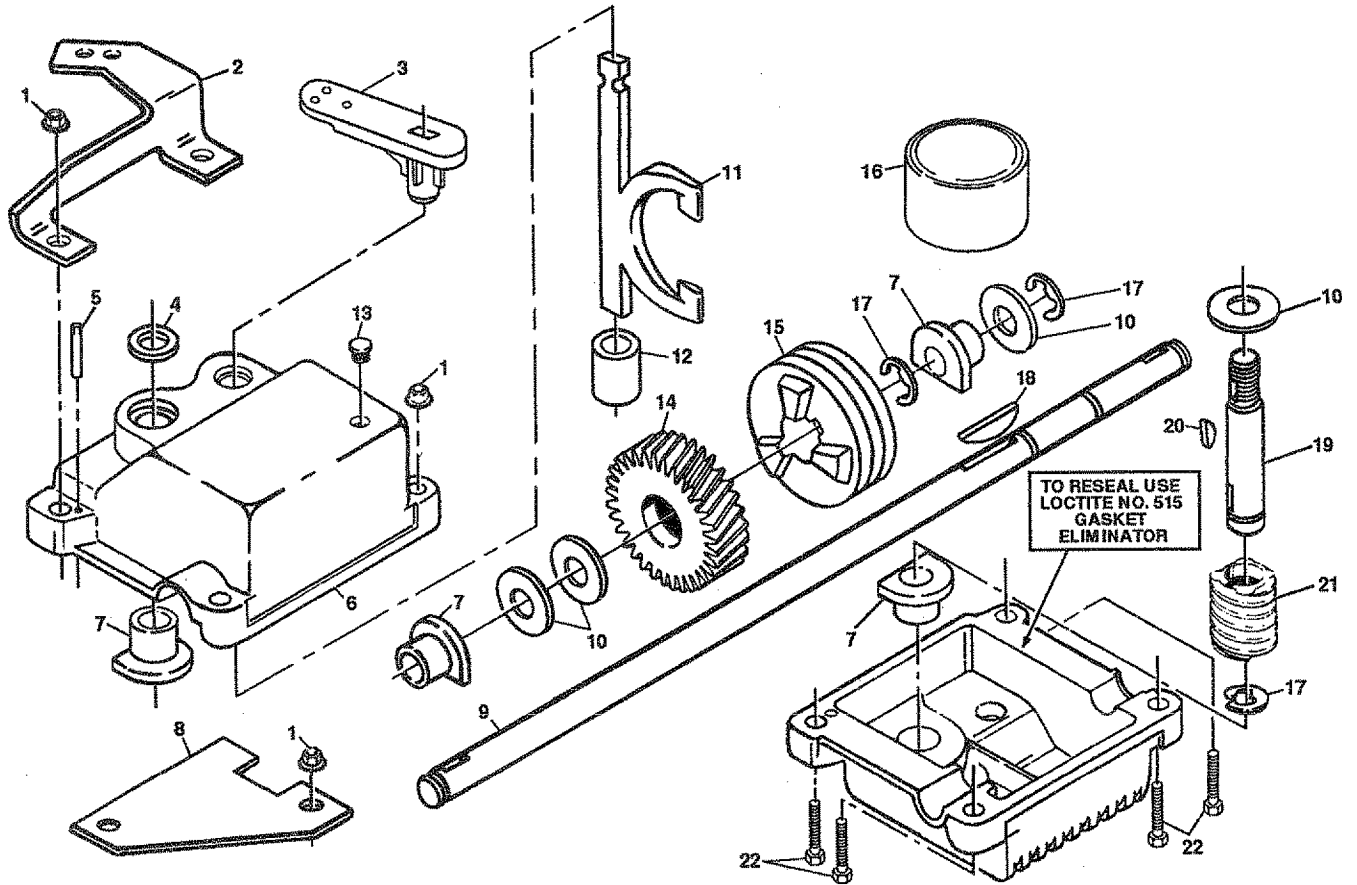
CRAFTSMAN 22" ROTARY LAWN MOWER - MODEL NO. 917.374740

KEY PART NO.	NO.	DESCRIPTION	KEY PART NO.	NO.	DESCRIPTION
1	86814	Control Bar	24	87729	Wheel & Tire Assembly 8.00 x 1.75
2	68038	Locknut 1/4-20	25	86960	Wheel Bushing
3	48225	Control Head Kit	26	52160	Flat Washer
4	86055	Screw #10 x 20 x 2	27	85179	Retainer Clip
6	83691	V-Belt	28	77400	Hubcap
7	750097	Hex Washer Head Screw #10-24 x 1/2	29	751031	Drive Cover Decal
8	87930	Clip Guide (Housing)	30	87866	Pan Head Tapping Screw #10-24 x 2 3/4
9	74760444	Hex Head Bolt 1/4-20 x 2-3/4	31	750097	Hex Washer Head Screw #10-24 x 1/2
11	STD582087	Retaining Ring	32	751029	Drive Cover
12	63601	Locknut #10-24	33	750108	Hex Washer Head Screw #10-24 x 3/8
13	850922	Wheel Adjusting Bracket	34	83700	Cable Clamp
14	88284X004	Axle Arm Assembly	35	48262	Drive Control Cable Kit
15	87877	Selector Knob	36	132010	Flanged Locknut
16	851019X004	Selector Spring (Left)	37	131482	Drive Pulley
17	851021X004	Selector Spring (Right)	39	75192	Spring
19	86274	Belleville Washer	40	STD580014	Woodruff Key #3
20	86273	Bearing Spacer	41	83632	Spring
21	76401	Dust Cover	42	132232	Gear Case Assembly (Complete)
22	74507	Pinion	43	48175	Wheel Adjuster Assembly (Left)
23	STD581050	E-Ring	44	48174	Wheel Adjuster Assembly (Right)
			45	86012	Drive Shaft Cover

**22" POWER- PROPELLED
LAWN MOWER 917.374740**

REPAIR PARTS

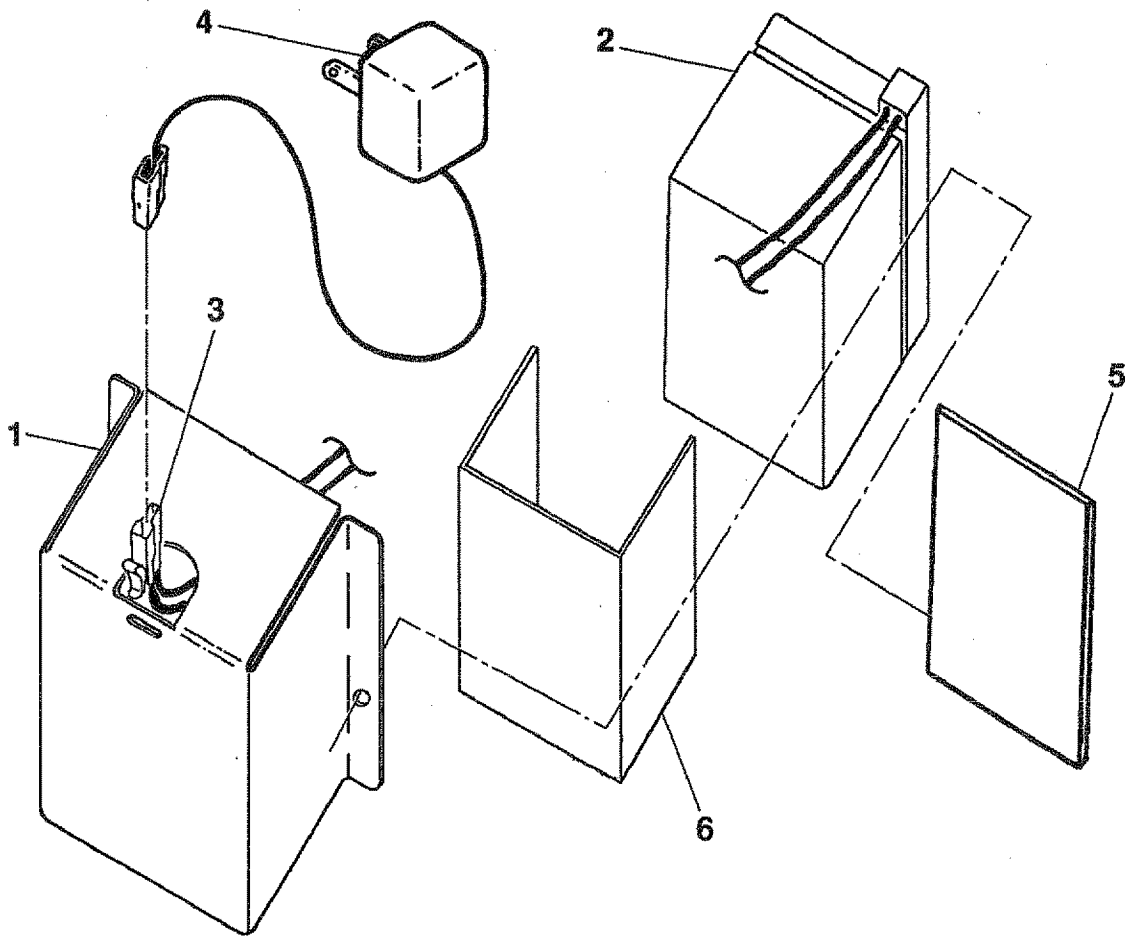
GEAR CASE ASSEMBLY PART NUMBER 132232



KEY PART NO. NO.	DESCRIPTION
1 53838	Locknut, Keps 1/4-20
2 85178	Bracket, Adjusting
3 131483	Shifter
4 57072	Seal
5 57388	Pin, Grooved 1/8 x 1/2
6 48032	Gear Case Halves, Upper and Lower (Includes Key #4, 5 and 7)
7 77881	Bearing
8 77039	Bracket, Spring
9 750430	Drive Shaft
10 57079	Washer, Hardened
11 131484	Yoke, Clutch
12 131485	Bushing

KEY PART NO. NO.	DESCRIPTION
13 86447	Plug
14 133804	Gear, Helical
15 750436	Jaw, Clutch
16 750355	Grease
17 STD581050	E-Ring
18 850848	Key, Hi-Pro
19 131481	Shaft, Worm
20 65692	Key, Woodruff, #3
21 83680	Worm
22 STD522512	Screw, Hex Head 1/4-20 x 1-1/4

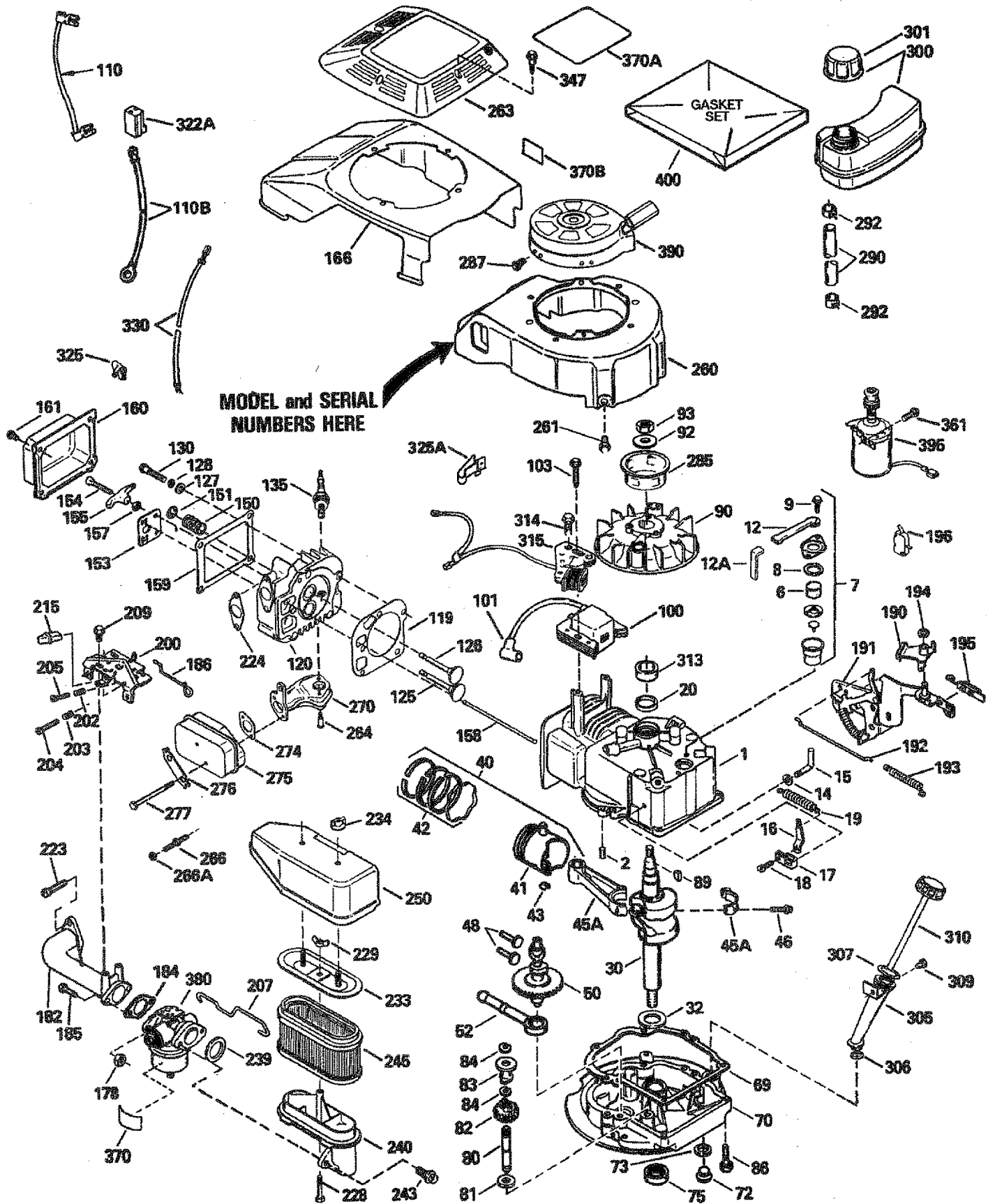
NOTE: All component dimensions given in U.S. inches
1 inch = 25.4 mm



KEY NO.	PART NO.	DESCRIPTION
1	87297X479	Battery Bracket
2	750909	Battery
3	86353	Conector Mounting Clip
4	86342	Battery Charger
5	86649	Battery Pad
6	134861	Battery Wrap

CRAFTSMAN 4-CYCLE ENGINE

MODEL NUMBER 143.404112



CRAFTSMAN 4-CYCLE ENGINE

MODEL NUMBER 143.404112

REF PART NO. NO.	DESCRIPTION	REF PART NO. NO.	DESCRIPTION
1 35805	Cylinder Assembly (Includes Reference Number 2 and 20)	89 611004	Key, Flywheel
2 26727	Pin, Dowel	90 611044	Flywheel
6 33734	Element, Breather	92 650815	Washer, Belleville
7 34214A	Breather Assembly (Includes Reference #6, 8, 9, 12 and 12A)	93 650816	Nut, Flywheel
8 33735	* Gasket, Breather	100 34443A	Solid State Assy.
9 30200	Screw, Sems, Hex Washer Head, Self-Tapping #10-24 x 9/16	101 610118	Cover, Spark Plug
12 33886	Tube, Breather	103 650814	Screw, Sems, Hex Washer Head, Torx #10-24 x 1
12A 34695	Elbow, Breather Tube	110 34961	Wire, Ground
14 28277	Washer, Flat	110B 34970	Wire, Ground
15 30589	Rod, Governor (Includes Reference Number 14)	119 35806	* Gasket, Cylinder Head
16 32651	Lever, Governor	120 35630	Head, Cylinder
17 31335	Clamp, Governor Lever	125 35621	Valve, Exhaust, Standard Size (Includes Reference Number 151)
18 650548	Screw, Hex Washer Head #8-32 x 5/16	35622	Valve, Exhaust, 1/32" Oversize (Includes Reference Number 151)
19 33578	Spring, Extension	126 35619	Valve, Intake, Standard Size (Includes Reference Number 151)
20 32600	Seal, Oil	35620	Valve, Intake, 1/32" Oversize (Includes Reference Number 151)
30 35816	Crankshaft	127 650691	Washer, Flat
32 32323	Washer, Thrust	128 650690	Washer, Belleville
40 35544	Piston, Pin & Ring Assembly, Std. (Includes Reference #41, 42, & 43)	130 650912	Screw, Hex Washer Head 5/16-18 x 1-1/2
35545	Piston, Pin & Ring Assembly, .010" Oversize (Includes Reference Numbers 41, 42, and 43)	135 34645	Spark Plug, Resistor Type (Champion RN-4C or Equivalent)
35546	Piston, Pin & Ring Assembly, .020" Oversize (Includes Reference Numbers 41, 42, and 43)	150 31672	Spring, Valve
41 35541	Piston & Pin Assembly, Standard (Includes Reference Number 43)	151 31673	Cap, Valve Spring Keeper
35542	Piston & Pin Assembly, .010" Oversize (Includes Ref. #43)	153 35623	Guide, Push Rod
35543	Piston & Pin Assembly, .020" Oversize (Includes Ref. #43)	154 650913	Stud, Rocker Arm
42 35547	Ring Set, Piston, Standard Size	155 35624	Arm, Rocker
35548	Ring Set, Piston, .010" Oversize	157 650914	Nut, Hex, Jam
35549	Ring Set, Piston, .020" Oversize	158 35625	Rod, Push
43 20381	Ring, Piston Pin Retaining	159 35626	* Gasket, Rocker Arm Cover
45A 32875	Rod Assembly, Connecting (Includes Reference Number 46)	160 35718	Cover, Rocker Arm
46 32610A	Bolt, Connecting Rod	161 30063	Screw, Sems, Hex Washer Head 1/4-20 x 1/2
48 35616	Valve, Lifter	166 35820	Shroud Assembly
50 33553	Camshaft (Mechanical Compression Release)	178 29752	Nut and Lock Washer 1/4-28
52 29914	Pump Assembly, Oil	182 6201	Screw, Hex Head 1/4-28 x 7/8
69 35261	* Gasket, Mounting Flange	184 26756	* Gasket, Carburetor
70 35810	Flange, Mounting (Includes Reference Numbers 72, 73, 75 and 80)	185 35635	Pipe, Intake
72 30572	Plug, Oil Drain (Includes Reference Number 73)	186 34358	Link, Governor Spring
73 28833	* Gasket, Oil Drain Plug (Not Necessary with Plastic Drain Plug)	190 34968	Lever, Brake
75 27897	Seal, Oil	191 35248	Bracket, S.E. Brake (Includes Reference Number 196)
80 30574	Shaft, Governor	192 34966	Link, Control
81 35479	Washer, Flat	193 34965	Spring, Extension
82 30591	Gear Assembly, Governor (Includes Reference Number 81)	194 32309	Ring, Retaining
83 30588A	Spool, Governor	195 610973	Terminal Assembly
84 29193	Ring, Retaining	196 35035	Switch, Assembly
86 650488	Screw, Sems, Hex 1/4-20 x 1-1/4	200 33205A	Bracket Assembly, Control (Includes Reference #202 thru 205)
		202 33802	Spring, Compression
		203 31342	Spring, Compression
		204 650549	Screw, Fillister Head #5-40 x 7/16
		205 650777	Screw, Fillister Head #6-32 x 21/32

* Indicates Parts Included in Gasket Set, Ref. #400

NOTE: All component dimensions given in U.S. inches
1 inch = 25.4 mm

CRAFTSMAN 4-CYCLE ENGINE

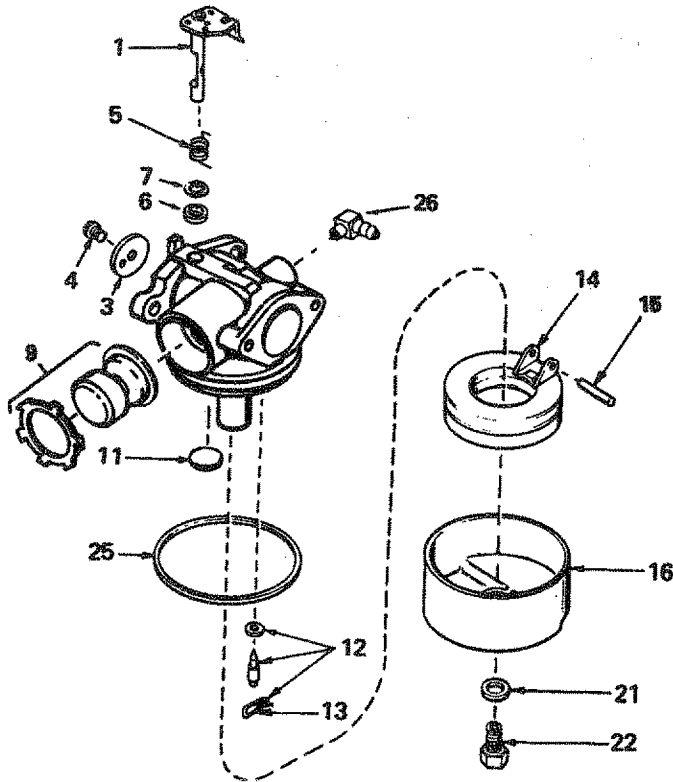
MODEL NUMBER 143.404112

REF PART NO. NO.	DESCRIPTION	REF PART NO. NO.	DESCRIPTION
207 35364	Link, Throttle	301 35355	Cap, Fuel
209 30200	Screw, Sems, Hex Washer Head, Self-Tapping #10-24 x 9/16	305 35819	Tube, Oil Fill
215 35511	Knob, Control	306 34265	* Gasket, Fill Tube
223 650451	Screw, Sems, Hex Head 1/4-20 x 1	307 35499	"O" Ring
224 35629	* Gasket, Intake Pipe	309 650562	Screw, Hex Washer Head, Shakeproof #10-32 x 1/2
228 650934	Stud, Air Cleaner	310 35822	Dipstick, Oil Fill
229 650935	Wing Nut, Special	313 34080	Spacer, Flywheel
233 35818	Bracket, Air Cleaner	314 650767	Screw, Sems, Hex Washer Head, Taptime #8-36 x 5/8
234 650933	Wing Nut, Special 1/4-20	315 34990	Coil, Alternator
239 35848	* Gasket, Air Cleaner	322A 35013	Connector
240 35849	Body, Air Cleaner	325 29443	Clip, Wire
243 650937	Screw, Shoulder, Hex Washer Head #10-32 x 43/64	325A 35249	Retainer, Wire
245 35850	Filter, Air Cleaner, Paper	330 35853	Wire, Ground
250 35823	Cover, Air Cleaner	347 650898	Screw, Shoulder, Hex Washer Head #10-32 x 27/32
260 35817	Housing, Blower	361 650831	Screw, Hex Washer Head, Powerlok Thread 1/4-20 x 15/32
261 650831	Screw, Hex Washer Head, Powerlok Thread 1/4-20 x 15/32	370 35756	Grill, Starter
263 35821	Grill, Starter	370A 35840	Screw, Shoulder, Flat Head, Torx-T30 1/4-20 x 1-7/32
264 650918	Screw, Shoulder, Flat Head, Torx-T30 1/4-20 x 1-7/32	370B 35847	Stud, Manifold
266 650917	Stud, Manifold	380 632577	Nut and Lock Washer 1/4-28
266A 29752	Nut and Lock Washer 1/4-28	390 590637	Manifold Assembly, Exhaust
270 35720	Manifold Assembly, Exhaust	395 34934	* Gasket, Exhaust Manifold
274 35865	* Gasket, Exhaust Manifold	400 35633A	Muffler Assembly
275 35851	Muffler Assembly		Plate, Lock
276 35852	Plate, Lock		Screw, Hex Head 5/16-18 x 3-3/16
277 650729	Screw, Hex Head 5/16-18 x 3-3/16		Hub, Starter
285 35000	Hub, Starter		Screw, Hex Washer Head #8-32 x 1/2
287 650884	Screw, Hex Washer Head #8-32 x 1/2		Line, Fuel
290 29774	Line, Fuel		Clamp, Fuel Line
292 26460	Clamp, Fuel Line		Tank, Fuel (Includes Reference Numbers 292 and 301)
300 35586	Tank, Fuel (Includes Reference Numbers 292 and 301)		
			RPM Settings: Low Speed: 2500 High Speed: 3000
			* Indicates Parts Included in Gasket Set, Ref. #400
			NOTE: All component dimensions given in U.S. inches 1 inch = 25.4 mm

CRAFTSMAN 4-CYCLE ENGINE

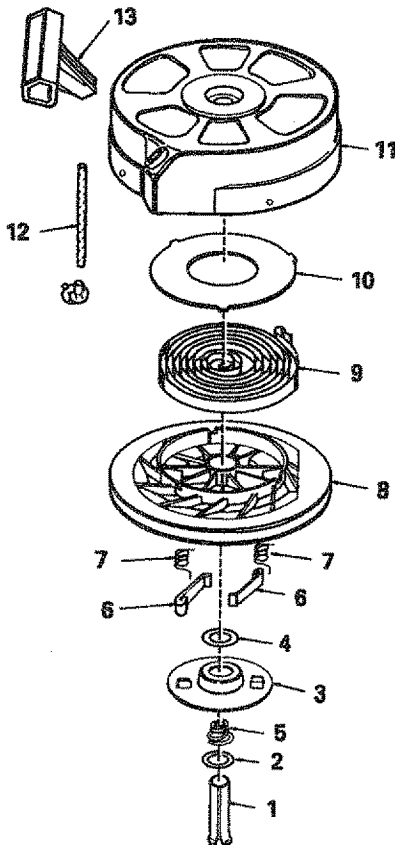
MODEL NUMBER 143.404112

CARBURETOR NO. 632577



REF PART NO.	PART NO.	DESCRIPTION
--	632577	Carburetor
1	631615	Shaft and Lever Assembly, Throttle
3	632504	Shutter, Throttle
4	650506	Screw, Throttle Shutter
5	631767	Spring, Throttle Return
6	631971	Seal, Dust
7	631184	Washer, Flat
9	36045	Primer Assembly
11	631027	Plug, Welch
12	631021	Inlet Needle, Seat & Clip Assembly (Includes Reference Number 13)
13	631022	Clip, Inlet Needle
14	632019	Float, Carburetor
15	631024	Shaft, Float
16	631867	Bowl, Float
21	27110	Gasket, Bowl-to-Body
22	632578	Nut, Float Bowl
25	631028	Gasket, Bowl-to-Body
26	631807	Fitting, Fuel Inlet

REWIND STARTER NO. 590637



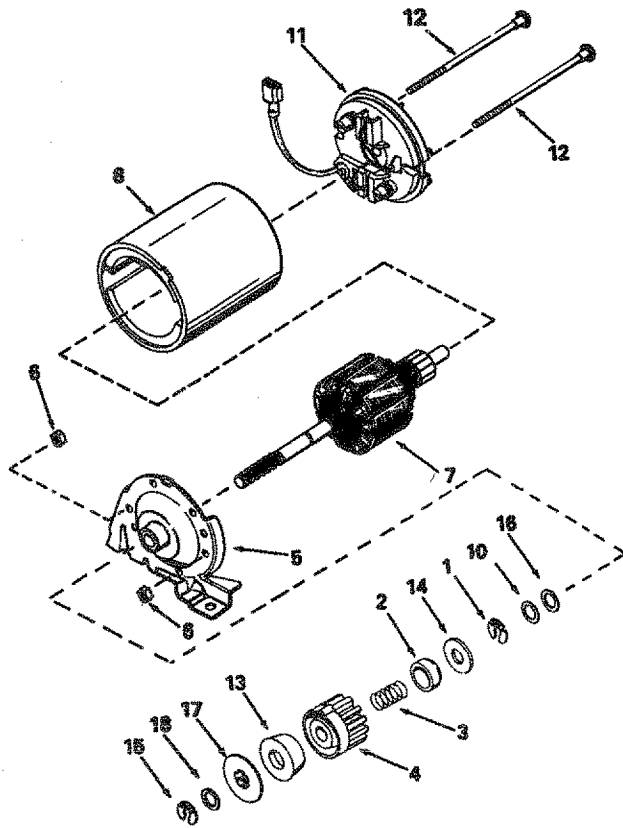
REF PART NO.	PART NO.	DESCRIPTION
--	590637	Starter, Rewind
1	590599A	Pin, Spring (Includes Reference #4)
2	590600	Washer
3	590615	Retainer
4	590601	Washer
5	590598	Spring, Brake
6	590616	Dog, Starter
7	590617	Spring, Dog
8	590618	Pulley
9	590619	Spring, Rewind
10	590620	Cover, Spring
11	590638	Housing Assembly, Starter
12	590535	Rope, Starter (98" Long, 9/64" Dia.)
13	590452	Handle, Starter

NOTE: All component dimensions given in U.S. inches
1 inch = 25.4 mm

CRAFTSMAN 4-CYCLE ENGINE

MODEL NUMBER 143.404112

MOTOR, ELECTRIC STARTER NO. 34934



REF NO.	PART NO.	DESCRIPTION
--	34934	Motor, Electric Starter
1	34955	Ring, Retainer
2	34950	Retainer, Spring
3	34954	Spring
4	34949A	Gear
5	34943	Cap Assembly, Drive End
6	33450	Locknut
7	34944	Armature
8	34945	Housing Assembly
10	590500	Washer, Thrust
11	34942	Cap Assembly, Commutator End (Includes Brushes, Which Cannot Be Serviced Separately)
12	34947	Bolt #10-32 x 3-3/16
13	34946	Driver, Pinion
14	34951	Washer, Cup
15	34952	Ring, Retainer
16	34948	Washer
17	34953	Nut, Drive
18	590608	Washer, Dust

NOTE: All component dimensions given in U.S. inches
1 inch = 25.4 mm

TROUBLESHOOTING POINTS

PROBLEM	CAUSE	CORRECTION
Does not start	<ol style="list-style-type: none"> 1. Dirty air filter. 2. Out of fuel. 3. Stale fuel. 4. Water in fuel. 5. Spark plug wire is disconnected. 6. Bad spark plug. 7. Loose blade or broken blade adapter. 8. Control bar in released position. 9. Control bar defective. 10. Dead Battery. 	<ol style="list-style-type: none"> 1. Clean/replace air filter. 2. Fill fuel tank. 3. Drain tank and refill with fresh clean fuel. 4. Drain fuel tank and carburetor and refill tank with fresh gasoline. 5. Connect wire to plug. 6. Replace spark plug. 7. Tighten blade bolt or replace blade adapter. 8. Depress control bar to handle. 9. Replace control bar. 10. Recharge/Replace Battery.
Loss of power	<ol style="list-style-type: none"> 1. Rear of lawn mower housing/blade dragging in heavy grass. 2. Cutting too much grass. 3. Dirty air filter. 4. Buildup of grass, leaves and trash under mower. 5. Too much oil in engine. 6. Speed too fast. 	<ol style="list-style-type: none"> 1. Set in "Higher Cut" position. 2. Set in "Higher Cut" position. 3. Clean/replace air filter. 4. Clean underside of mower housing. 5. Check oil level. 6. Cut at slower speed.
Poor cut - uneven	<ol style="list-style-type: none"> 1. Worn, bent or loose blade. 2. Wheel heights uneven. 3. Low engine speed. 4. Buildup of grass, leaves, and trash under mower. 	<ol style="list-style-type: none"> 1. Replace blade. Tighten blade bolt. 2. Set all wheels at same height. 3. Set engine speed control in HIGH position. 4. Clean underside of mower housing.
Excessive vibration	<ol style="list-style-type: none"> 1. Worn, bent or loose blade. 2. Bent engine crankshaft. 	<ol style="list-style-type: none"> 1. Replace blade. Tighten blade bolt. 2. Contact Authorized Service Center.
Starter rope hard to pull (Auxiliary Starter)	<ol style="list-style-type: none"> 1. Engine flywheel brake is on when control bar is released. 2. Bent engine crankshaft. 3. Blade adapter broken. 4. Blade dragging in grass. 	<ol style="list-style-type: none"> 1. Depress control bar to upper handle before pulling starter rope. 2. Contact Authorized Service Center. 3. Replace blade adapter. 4. Move lawn mower to cut grass or to hard surface to start engine.
Loss of drive	<ol style="list-style-type: none"> 1. Drive wheels not turning with drive control engaged. 2. Belt not driving. 	<ol style="list-style-type: none"> 1. Adjust or replace drive control cable, if broken. 2. Put belt on pulleys or replace belts, if broken.
Grass catcher not filling (If so equipped)	<ol style="list-style-type: none"> 1. Cutting height too low. 2. Lift on blade worn off. 3. Catcher not venting air. 4. Low engine speed. 	<ol style="list-style-type: none"> 1. Raise cutting height. 2. Replace blade. 3. Clean grass catcher. 4. Set engine speed control in HIGH position.

SEARS

**OWNER'S
MANUAL**

**MODEL NO.
917.374740**

**HOW TO ORDER
REPAIR PARTS**

CRAFTSMAN®

**5.0 HORSEPOWER
22" SIDE DISCHARGE
ELECTRIC START
POWER PROPELLED
ROTARY LAWN MOWER**

Each Lawn Mower has its own model number. Each engine has its own model number.

The model number for your lawn mower will be found on a decal attached to the rear of the lawn mower housing.

The model number for the engine will be found on the Blower Housing of the engine adjacent to the spark plug.

All parts listed here in may be ordered through Sears, Roebuck and Co. Service Centers and most Retail Stores.

**WHEN ORDERING REPAIR PARTS, ALWAYS GIVE THE
FOLLOWING INFORMATION:**

- PRODUCT - "ROTARY LAWN MOWER"
- MODEL NUMBER - 917.374740
- ENGINE - CRAFTSMAN -
MODEL NUMBER 143.404112
- PART NUMBER
- PART DESCRIPTION

Your Sears merchandise has added value when you consider that Sears has service units nationwide staffed with Sears trained technicians...professional technicians specifically trained on Sears products, having the parts, tools and the equipment to insure that we meet our pledge to you, we service what we sell.

136856

04/29/92

Printed in U.S.A.

SEARS, ROEBUCK AND Co., Chicago, IL. 60684 U.S.A.