

SNAPPER®

ASSEMBLY INSTRUCTIONS
OPERATOR'S MANUAL
PARTS LIST

Walk-Behind Mower



32" cut model

Models covered:
SGV13320KW

Actual product may differ slightly from product pictured above

GVTP SM32-R0303.1

1 preliminaries

Congratulations!

You have just purchased one of the finest pieces of outdoor power equipment on the market today. If properly cared for, your new mower will provide years of dependable service. Please read and follow this instruction manual carefully in order to get the most out of your new equipment.

As you carefully uncrate your unit, you will find the following items:

- 1 Mower Unit**
- 1 Caster Kit Box** including:
 - 2 - Caster arms
 - 2 - Caster horns with mounted wheels and spacers
- 1 Fuel Tank assembly complete with cap**
- 1 Handle Bar Kit** including:
 - 1 – Handle assembly with mounted brake and safety levers
 - 1 – Safety instruction display bracket
 - 1 – Deflector chute
 - 1 – Transmission shift lever assembly
 - 2 – Upper brake rods
 - 1 – Package of assembly hardware
 - 1 – Package containing operating manuals and warranty registration

Each product leaves our factory in excellent condition; occasionally, however, some damage may occur during shipment. If any such damage is found upon initial inspection, *immediately* notify the transport carrier who delivered your machine, as they are solely responsible for such damage, as well as any subsequent adjustments necessary.

Before assembly, please take a moment and record your model number and serial number below for future reference (both numbers are located on the silver tag adhered to the rear of the engine deck):

Model number _____

Serial number _____

Also be sure to promptly fill out and return the warranty registration enclosed in your manual packet.

Your new mower requires very little assembly. Simply follow the instructions contained within this manual to begin enjoying the benefits of your new unit.

CALIFORNIA PROPOSITION 65 WARNING

Gasoline and Diesel engine exhaust and some of its constituents are known to the State of California to cause cancer, birth defects and other reproductive harm.

As an owner of off-road gasoline or diesel engine equipment and/or as an employer, you also may have an obligation under the California Occupational Safety and Health Act or under Proposition 65 to warn persons exposed to gas and diesel engine exhaust and/or other Proposition 65 chemicals in and around your workplace. See California Health and Safety Code section 25249.5, Title 22 of the California Code of Regulations at Section 1200 *et seq.*, and Title 8 of the California Code of Regulations Section 5194.

R0303.1

2 *safety rules regarding outdoor power equipment*

PLEASE READ THE FOLLOWING BEFORE ASSEMBLING OR OPERATING UNIT

TRAINING

- Read, understand, and follow all instructions in the manual and on the unit before starting. If the operator(s) or mechanic(s) can not read English it is the owner's responsibility to explain this material to them.
- Become familiar with the safe operation of the equipment, operator controls, and safety signs.
- All operators and mechanics should be trained. The owner is responsible for training the users.
- Only allow responsible adults, who are familiar with the instructions, to operate the unit.
- Never let children or untrained people operate or service the equipment. Local regulations may restrict the age of the operator.
- The owner/user can prevent and is responsible for accidents or injuries occurring to themselves, other people or property.

PREPARATION

- Evaluate the terrain to determine what accessories and attachments are needed to properly and safely perform the job. Use only accessories and attachments approved by the manufacturer.
- Wear appropriate clothing including safety shoes, safety glasses and ear protection. Long hair, loose clothing or jewelry may get tangled in moving parts.
- Inspect the area where the equipment is to be used and remove all objects such as rocks, toys and wire, which can be thrown by the machine.
- Use extra care when handling gasoline and other fuels. They are flammable and vapors are explosive.
 - a) Use only an approved container.
 - b) Never remove fuel cap or add fuel with the engine running. Allow engine to cool before refueling. Do not smoke.
 - c) Never refuel or drain the machine indoors.
- Check that operator's presence controls, safety switches and shields are attached and functioning properly. Do not operate unless they are functioning properly.

OPERATION

- Never run an engine in an enclosed area.
- Mow only in the daylight or with good artificial light, keeping away from holes and hidden hazards.

- Be sure transmission is in neutral and cutting blades are disengaged before starting engine.
- Be sure of your footing while using pedestrian controlled equipment, especially when backing up. Walk, don't run.
- Do not mow in reverse unless absolutely necessary. Always look down and behind before and while traveling in reverse.
- Be aware of the mower discharge direction and do not point it at anyone. Do not operate the mower without either the entire grass catcher or the deflector in place.
- Slow down and use caution when making turns and when changing directions on slopes.
- Never raise deck with the blades running.
- Never leave a running unit unattended. Always disengage cutting blades, set transmission in neutral, stop engine, and remove keys before leaving unit. Keep hands and feet away from the cutting units.
- Disengage the cutting blades when not mowing.
- Never operate with guards not securely in place. Be sure all safety features are attached, adjusted properly and functioning properly.
- Never operate with the discharge deflector raised, removed or altered, unless using a grass catcher.
- Do not change the engine governor setting or over speed the engine.
- Stop on level ground, disengage cutting blades, set transmission in neutral, shut off engine before leaving the operator's position for any reason including emptying the grass catchers or unclogging the chute.
- Stop equipment and inspect blades after striking objects or abnormal vibration occurs. Make necessary repairs before resuming operations.
- Keep hands and feet away from the cutting units.
- Never carry passengers and keep pets and bystanders away.
- Do not operate the unit while under the influence of alcohol or drugs.
- Slow down and use caution when making turns and crossing roads and sidewalks. Stop blades if not mowing.
- Use care when loading or unloading the machine into a trailer or truck.
- Use care when approaching blind corners, shrubs, trees or other objects that may obscure vision.

2 *safety rules regarding outdoor power equipment (cont.)*

SLOPE OPERATION

Slopes are a major factor related to loss-of-control and tip-over accidents, which can result in severe injury or death. All slopes require extra caution. If you cannot back up the slope, or if you feel uneasy on it, do not drive on it.

Do

- Mow across the face of slopes; never up and down.
- Remove obstacles such as rocks, tree limbs, etc.
- Watch for holes, ruts, or bumps. Uneven terrain could overturn the unit. Tall grass can hide obstacles.
- Use slow speed. Choose a slow speed so that you will not have to stop or change speed while on the slope.
- Use extra care with grass catchers or other attachments. These can change the stability of the unit.
- Keep all movement on the slopes slow and gradual. Do not make sudden changes in speed or direction.

Do Not

- Do not start or stop on a slope. If tires lose traction, disengage the blade and proceed slowly straight down the slope.
- Do not turn on slopes unless necessary, and then, turn slowly and gradually downhill, if possible.
- Do not mow near drop-offs, ditches, or embankments. The operator could lose footing or balance or mower could suddenly turn over if a wheel is over the edge of a cliff or ditch, or if an edge caves in.
- Do not mow on wet grass. Reduced footing or traction could cause sliding.
- Do not mow excessively steep slopes.
- Do not use grass catcher on steep slopes.

CHILDREN

Tragic accidents can occur if the operator is not alert to the presence of children. Children are often attracted to the unit and the mowing activity. Never assume that children will remain where you last saw them.

- Keep children out of the mowing area and under the watchful care of another responsible adult.
- Be alert and turn unit off if children enter the area.
- Before and during reverse operation, look behind and down for small children.
- Never carry children. They may fall off and be seriously injured or interfere with safe unit operation.

- Never allow children to operate the unit.
- Use extra care when approaching blind corners, shrubs, trees, or other objects that may obscure vision.

EMISSIONS

- Engine exhaust from this product contains chemicals known, in certain quantities, to cause cancer, birth defects, or other reproductive harm.
- Look for the relevant Emissions Durability Period and Air Index information on the engine emissions label.

MAINTENANCE AND STORAGE

- Always observe safe refueling and fuel handling practices when refueling the unit after transportation or storage.
- Always follow the engine manual instructions for storage preparations before storing the unit for both short and long term periods.
- Always follow the engine manual instructions for proper start-up procedures when returning the unit to service.
- Never store the machine or fuel container inside where there is an open flame, such as in a water heater. Allow unit to cool before storing.
- Shut off fuel while storing or transporting. Do not store fuel near flames or drain indoors.
- Keep all hardware, especially blade attachment bolts, tight and keep all parts in good working condition. Replace all worn or damaged decals.
- Never tamper with safety devices. Check their proper operation regularly.
- Clean grass and debris from cutting units, drives, mufflers, and engine to prevent fires. Clean up oil or fuel spillage.
- Stop and inspect the equipment if you strike an object. Repair, if necessary, before restarting.
- Never make adjustments or repairs with the engine running unless specified otherwise.
- Park machine on level ground. Never allow untrained personnel to service machine.
- Use jack stands to support components when required.
- Carefully release pressure from components with stored energy. (e.g. springs)
- Use care when checking blades. Wrap the blade(s) or wear gloves, and use caution when servicing them. Only replace blades. Never straighten or weld them.
- Keep hands and feet away from moving parts.

2 *safety rules regarding outdoor power equipment (cont.)*

- Grass catcher components are subject to wear, damage, and deterioration, which could expose moving parts or allow objects to be thrown. Frequently check components and replace with manufacturer's recommended parts, when necessary.
- Check brake operation frequently. Adjust and service as required.
- Use only factory authorized replacement parts when making repairs.
- Always comply with factory specifications on all settings and adjustments.
- Only authorized service locations should be utilized for major service and repair requirements.
- Never attempt to make major repairs on this unit unless you have been properly trained. Improper

service procedures can result in hazardous operation, equipment damage and voiding of manufacturer's warranty.

⚠ WARNING

Never operate on slopes greater than 20° (36.4 percent) which is a rise of 7-1/4 feet (220 cm) vertically in 20 feet (607 cm) horizontally.

Select slow ground speed before driving onto slope. In addition to front and rear weights, use extra caution when operating on slopes with rear-mounted grass catcher.

Mow ACROSS the slope, never up and down the face, use caution when changing directions and DO NOT START OR STOP ON SLOPE.

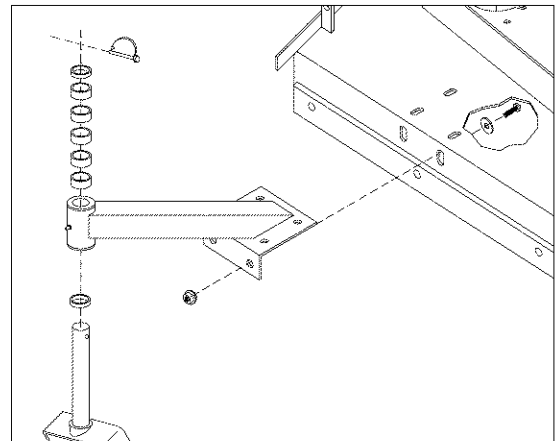
3 *unit assembly*

Note: Please refer to Parts List for correct part identification and placement. Parts list reference numbers are called out by sheet number followed by reference number(s) on that sheet: (1:1) indicates Sheet 1, reference number 1; (2:32,34-38) indicates Sheet 2, reference numbers 32 through 38 excluding 33; etc.

Note: Some assembly steps may already have been completed at the factory. Simply disregard factory-completed steps and proceed to the next assembly step.

CASTER ASSEMBLY

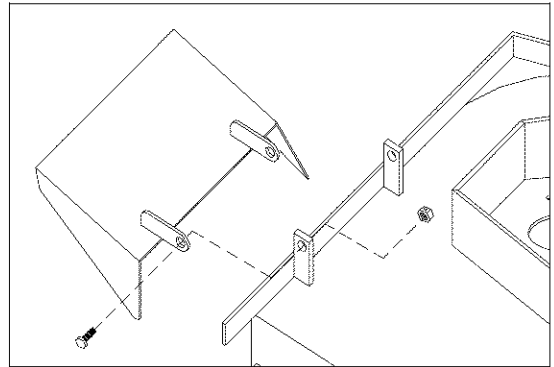
- Remove Lynch pin (1:16) and all but the bottom 1/4" spacer (1:15) from Caster horn (1:13).
- Slide Caster horn up through Caster arm (1:8), securing with same spacers and lynch pin removed in previous step. NOTE: When assembled in this manner, cutting height will be approximately 2-1/2".
- With front of mower propped up, install caster assemblies to front of Blade Deck (1:1) with twelve 3/8" x 1" bolts, flat washers, and serrated flange nuts (1:9-11). (Bolts are installed from inside of mower deck.) Tighten all bolts securely. Lower front of mower.



3 unit assembly (cont.)

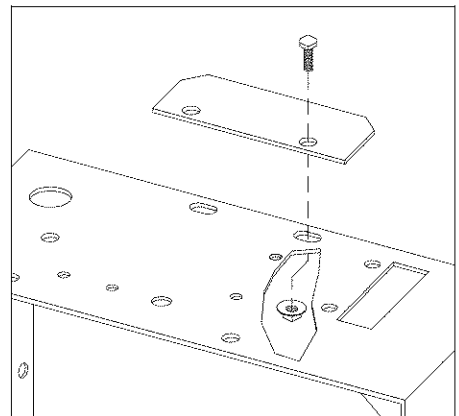
DISCHARGE DEFLECTOR ASSEMBLY

- Attach discharge deflector (1:5) using two 5/16" x 3/4" bolts and lock nuts (1:6-7). CAUTION: Do not over tighten lock nuts.

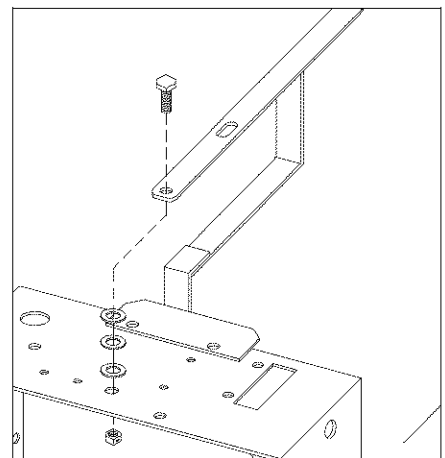


TRANSMISSION SHIFT LEVER ASSEMBLY

- Install Shift indicator panel (2:45) onto rear of engine deck (2:1) with two 5/16 x 3/4" hex bolts (2:47), securing with large serrated flange nuts (2:48). Leave hardware finger tight.



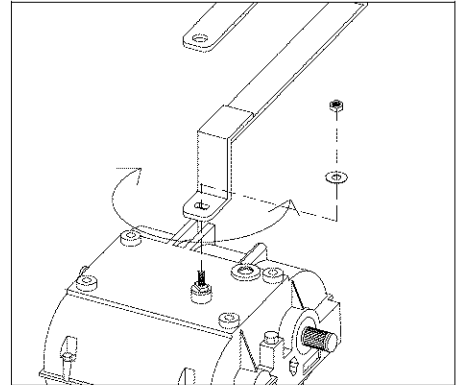
- Remove 3/8" nylon lock nut and flat washer (2:43,44) from shift stud atop transmission (2:14 – location 'A').
- Remove 1/2 x 2-1/2" hex bolt, three oillite washers, and lock nut (2:40-42) from top rear of engine deck.
- Insert same 1/2" bolt down through top forward hole in Shift lever (2:38), slip same three washers up onto threads of bolt, then drop bolt into same hole.



3 *unit assembly (cont.)*

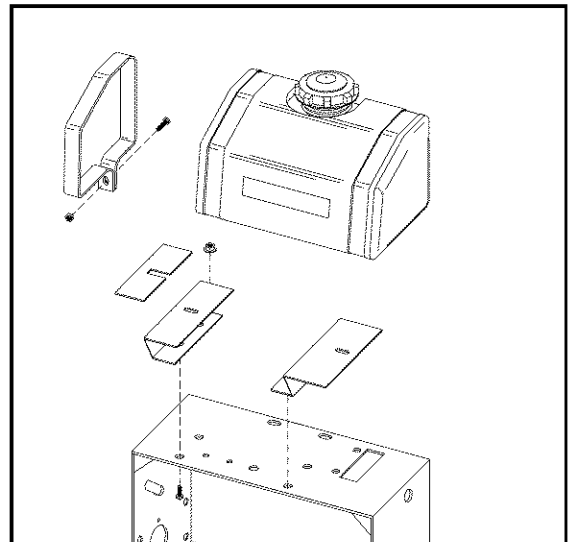
TRANSMISSION SHIFT LEVER ASSEMBLY (cont.)

- Position 'double-D' hole in bottom leg of shift lever onto transmission stud, then slowly move handle of shifter back and forth until hole drops onto matching base of stud.
- Replace washer and nut onto transmission stud. Tighten securely. Replace lock nut onto 1/2" bolt. Tighten snugly while allowing for shifter movement.
- Work shift lever through gear range, adjusting indicator panel for display alignment, then tighten indicator panel hardware.



FUEL TANK ASSEMBLY

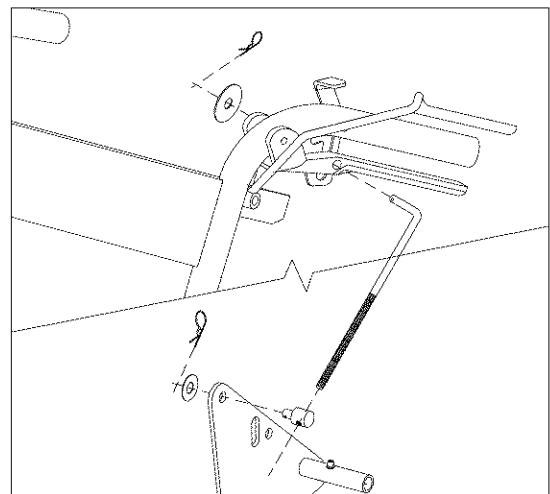
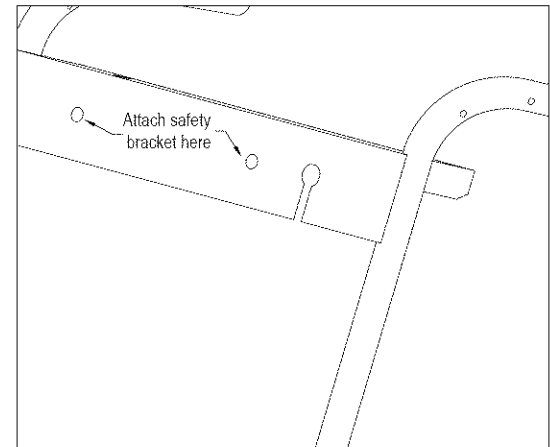
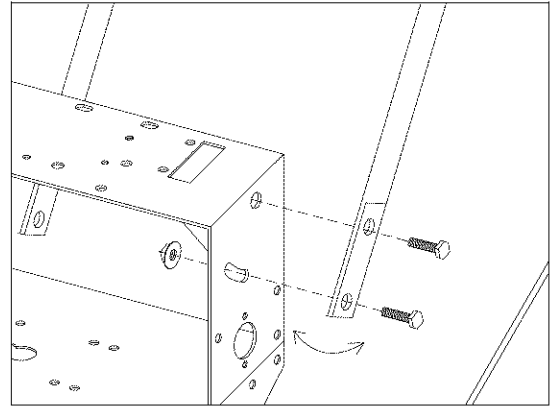
- Install fuel tank mount brackets (2:57, 58) onto engine deck using four 5/16 x 3/4" hex bolts and serrated flange nuts (2:59-60). Do not tighten.
- Place rubber pads (2:61) on top of mount brackets, making sure to not block fuel tank tab slots.
- Place fuel tank (2:65) on top of slotted rubber pads, making sure tabs on bottom of tank drop through slots in tank brackets.
- Slip fuel tank straps (2:62) around ends of tank, making sure bottom of straps slip under top ends of mounting brackets. Secure each strap with one 1/4-20 x 1-1/2" hex bolt and serrated flange nut (2:63-64). Tighten both straps and mounting bracket hardware securely.
- Slip end of fuel line from engine fully onto barbed nipple of fuel elbow (located under tank), securing with supplied spring clamp.



3 unit assembly (cont.)

HANDLE ASSEMBLY INSTALLATION

- Install handle assembly (4:1) to upper portion of engine deck using four 1/2" x 1-1/4" hex bolts and serrated flange nuts (4:3-4). Adjust for comfortable operation, then tighten securely.
- Locate wiring harness and route harness down the right side of handle assembly. Attach harness terminals to engine, transmission and blade clutch using the wiring diagram at the back of this manual as a guide. Attach harness to right handle bar with two plastic tie wraps.
- Route throttle and choke cables (4:22, 22b – attached to handlebar) down left side of handle assembly. Attach each cable to left side of mower handle using metal cable clip. Also install cable routing clip (4:34) onto engine deck – see Sheet 4 of Parts list for location.
- Connect throttle and choke cables to throttle body on lower front of engine – see Throttle/Choke Cable Adjustment in the Maintenance section of this manual for details.
- Also attach the safety instruction display bracket (4:30) to the front of the mower dash with two 5/16-18 x 3/4" hex bolts and serrated flange nuts (4:31-32).
- Install "L" shaped end of upper brake rod (4:9), from outside, through brake handle (4:5) and brake lock handle (4:10). Secure with fender washer and bridge pin (4:14-15). Attach adjustable rod fitting end (3:41) on lower end of rod to side idler plate (3:21) using flat washer and bridge pin (3:42-43). Repeat for other side. **IMPORTANT:** Adjust upper rods for handle comfort and proper drive belt release; also adjust lower brake rods (3:14), by means of 5/16" wing nut (3:20) so that brakes will hold firmly when brake lock handle is engaged.



Your mower is now ready to be started and checked for proper operation. Some minor final adjustments may be required; see the Maintenance portion of this manual.

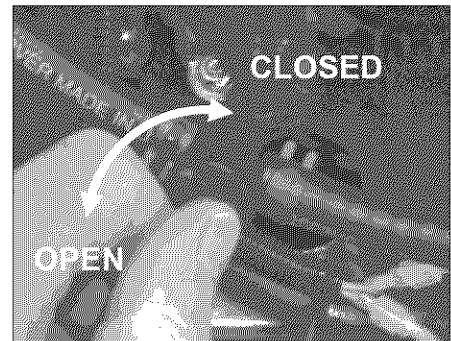
4 *unit operation*

STARTING THE ENGINE

IMPORTANT NOTE: The procedures outlined within this section are general guidelines, and are in no way meant to replace or supercede engine manufacturer's operating instructions. In order to obtain optimum performance from your engine, refer to your engine manual.

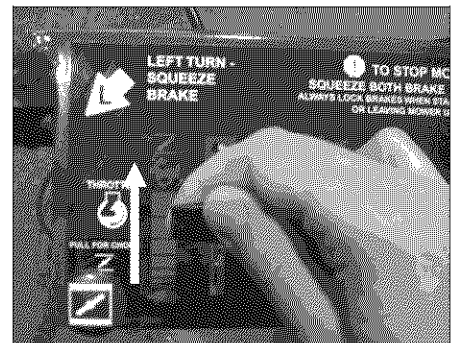
BEFORE STARTING ENGINE:

- Be sure that the unit is completely assembled, all fasteners are tightened securely, and all safety guards and components are in place.
- Be sure to check engine's **oil** and **gasoline***. (See engine manual for recommended oil and gasoline specifications.) **Never** check the engine while it is running or while you are smoking. Check only when engine is cold.
- *** All machines are shipped without oil or gasoline unless otherwise noted.**
- Be sure that in-line fuel valve is set to open position.

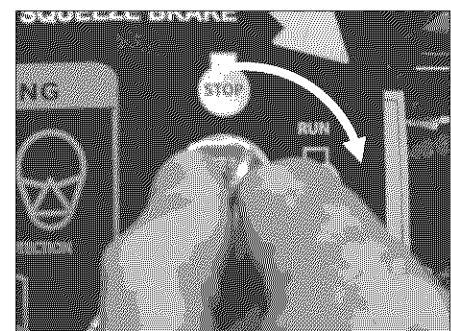


TO START ENGINE:

- Set throttle control fully up to "Choke" position. If your engine has an auxiliary choke, pull the choke knob fully out to engage.



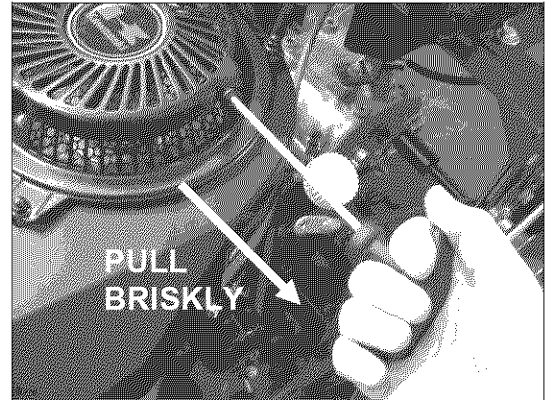
- Turn ignition key to 'run' position.



4 *unit operation (cont.)*

STARTING THE ENGINE (cont.)

- Grasp recoil handle and pull briskly. You may have to pull several times before engine starts. (If engine fails to start within a reasonable amount of time, discontinue and check engine manual for further instructions.) Note: Do not allow recoil rope to snap back into recoil; damage to the rope or recoil could result.
- After engine starts, move throttle control down to approximately half and disengage choke by pushing knob fully in.



TO SHUT ENGINE DOWN:

- Allow engine to idle for 2-3 minutes before shutting down.
- Set throttle control to 'slow' position.
- Turn ignition key to 'off' position.
- If engine is not to be started for a prolonged period, turn fuel valve to closed position.

IMPORTANT NOTE: *If you experience problems with your engine that cannot be satisfactorily resolved by following the instructions contained within the engine manual, contact your local engine dealer, or call the toll-free service number listed in the repair section of the engine manual. All engine service, warranty or otherwise, is required to be performed by a manufacturer-authorized service center. The equipment manufacturer is neither authorized nor responsible for any type of warranty engine service, nor is it equipped to perform any such service.*

MOWER OPERATION

GENERAL RULES TO OBSERVE BEFORE AND DURING OPERATION:

- Inspect your unit before each and every use. Check for worn, bent or broken components, loose fasteners, low or flat tires, etc., and repair or replace prior to operation. **DO NOT OPERATE A DEFECTIVE UNIT – SERIOUS INJURY OR DEATH CAN RESULT.**
- Clear the entire work area of all debris that could cause damage to or become entangled in the unit. Rocks and large branches can wedge themselves between the blades and deck, causing engine seizure, blade damage, or personal injury. If in doubt, remove it.
- Do not start unit until you are ready to begin mowing, and promptly shut off unit as soon as operation is complete.
- Keep hands, feet and clothing away from rotating parts. Never place your feet or hands under mower deck when the engine is running.
- Use proper discretion in selecting your debris removal pattern, especially on uneven terrain. Avoid steep hills, especially if surface is wet. Do not travel straight down slopes exceeding 14 degrees. If tires begin to slip when climbing a slope, the grade is too steep for safe operation. Angle the unit to a less steep slope until tires stop slipping and traction is regained.
- Be keenly aware of your surroundings while operating unit – children and pets can pop out of nowhere.

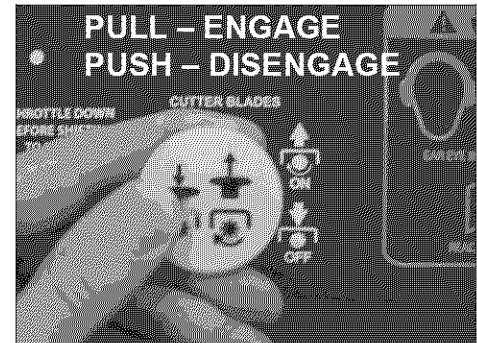
4 *unit operation (cont.)*

- Learn to listen to your machine – being aware of what a well-running unit sounds like can alert you to a potential problem. A straining engine or clanging blades or a slapping belt mean that trouble is almost sure to follow.

ENGAGING THE CUTTING BLADES:

Note: Never engage the mower blades until you are ready to mow and be certain to disengage them when finished. Never attempt any adjustment or repairs when the blades are engaged.

- To engage the cutting blades, simply pull out the blade engage switch knob (4:29), located in the center of the handle dash. To disengage, simply push the knob in. Always be sure cutting blades are disengaged before stopping the mower.

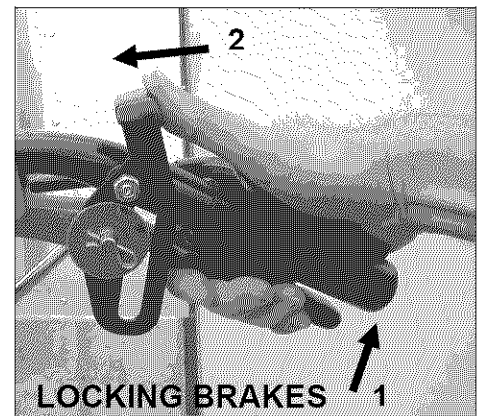


Important safety note: Power to the engine will be immediately cut if both of the safety handles (Parts List Ref #4:18) are released while cutting blades are engaged. This is an important safety feature – do not attempt to defeat it. Serious injury or death may result.

ENGAGING THE TRANSMISSION:

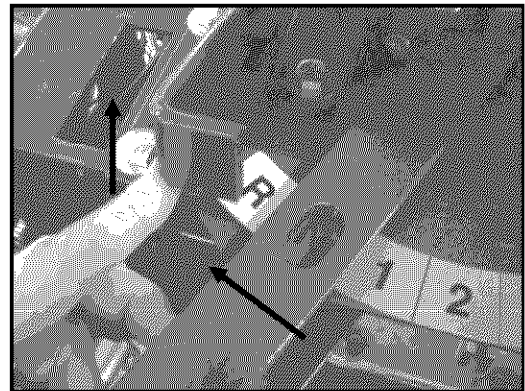
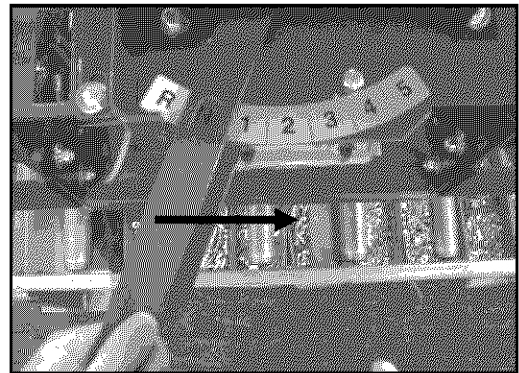
Note: Never attempt any adjustment or repairs with the transmission engaged.

- Always start your mower in neutral with brake handles in locked position.



4 unit operation (cont.)

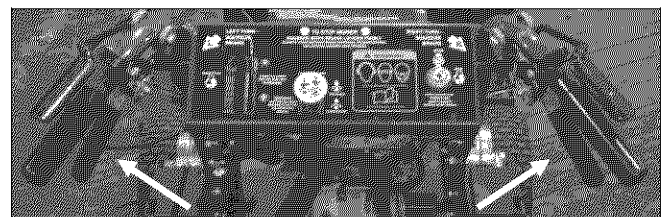
- Move the shift lever to first gear ('1'), unlock brakes, and slowly release the brake handles.
- Your mower has five forward speeds ('1' – '5'); simply slide the shifter lever to the appropriate indicator position to select that gear. The machine can be shifted on the run. **NOTE:** If climbing a hill, the brake squeeze handles might have to be momentarily activated. **CAUTION:** The shift lever should never be left or held in drive position for an extended time when the brake squeeze handles are in the locked position.
- To engage transmission in reverse, slide shifter lever into neutral ('N'), lock both left and right brake thumb locks, lift up on reverse lockout bar (2:51) and slide shifter lever into reverse ('R'); unlock thumb locks and slowly release brake levers. **NOTE: Machine will reverse towards operator. Use caution while using this feature. If control is lost, release grip on handles – see note below.**



Important safety note: Power to the engine will be immediately cut if both of the safety handles (Parts List Ref #4:18) are released while transmission is engaged. This is an important safety feature – do not attempt to defeat it. Serious injury or death may result.

STEERING THE UNIT:

- Squeezing either brake handle will turn the machine in that direction.



squeeze to turn left

squeeze to turn right

ADJUSTING CUTTING HEIGHT:

- See **Adjustments** in the Maintenance section of this manual.

5 *maintenance*

GENERAL:

- Follow **implicitly** the engine manufacturer's recommendations for maintenance.
- Always keep your machine clean - especially the engine deck. Check all adjustments periodically. Also, periodically check that all fasteners are secure. Remember, sharp blades cut better. Always have an extra set on hand. After re-sharpening blades, be certain they are checked for balance. Do not use blades out of balance. Before doing any of these, check your safety and assembly instructions.
- Never make any adjustments to the unit until the engine is **off** and the spark plug wire is disconnected.
- If carburetor adjustment is necessary, stand to one side and **keep feet and hands** in the clear while making adjustments.
- Keep engine free of accumulations of grass, leaves or excessive grease. An accumulation of these combustible materials may result in a fire.
- Store gasoline in a **safe and approved** container in a cool, dry place.
- Keep the unit and any fuel containers in locked storage to prevent children from playing and/or tampering with them.
- Do not store gasoline powered equipment or fuel containers in a basement or any closed area where heating or heat appliances or open pilot lights are present, unless the fuel is completely drained from the power equipment and the fuel containers.

LUBRICATION:

- Your mower is equipped with numerous greaseable assemblies to ensure long life and minimal wear. It is imperative that the owner address these areas. All fittings should be lubricated using a high-performance, automotive quality grease. See maintenance schedule below.

***LUBRICATION CHART**

Qty	Location	Daily	Weekly
2	Caster Wheel Pivots	X	
2	Caster Wheel Bearings	X	
2	Mower Spindle Bearings		X
2	Drive Wheel Bearings		X
All	Pivot Points		X

In addition all linkage points and threaded adjustments should be oiled on a weekly schedule.

*NOTE: This maintenance is necessary to keep your warranty in effect.

5 *maintenance (cont.)*

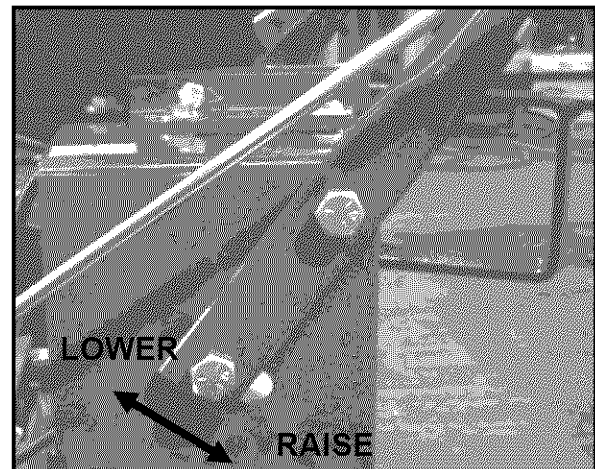
TROUBLESHOOTING:

- **UNIT WILL NOT START:** Check to make sure cutting blades are disengaged. Check to make sure transmission is in neutral. Check fuel and oil levels. Check to make sure throttle control engages engine choke when set to 'start' position; adjust if needed. Check all electrical connections for positive contact; repair or replace as necessary. If condition persists, contact dealer.
- **UNIT STALLS WHEN CUTTING BLADES ENGAGED:** Make sure safety handles are depressed when engaging blades. Check under handle dash to be sure safety rod depresses plunger on safety switch; adjust as necessary – see Safety Switch Rod Adjustment. Check all electrical connections for positive contact; repair or replace as necessary. If condition persists, contact dealer.
- **UNIT STALLS WHEN TRANSMISSION ENGAGED:** Make sure safety handles are depressed when engaging transmission. Check under handle dash to be sure safety rod depresses plunger on safety switch; adjust as necessary – see Safety Switch Rod Adjustment. Check all electrical connections for positive contact; repair or replace as necessary. If condition persists, contact dealer.
- **BLADE CUT POOR:** Replace blade. Note: See Cutting Blade Height Adjustment for proper spacer positioning when replacing blade.
- **BLADE BELT SLIPPING:** See Blade Belt Adjustment.
- **BLADE BELT VIBRATION:** See Blade Belt Adjustment or Blade Deck Pulley Alignment.
- **DRIVE BELTS SLIPPING:** Check spring tension on each drive idler – spring at factory is 8-1/4" oal extended length. If adjustment is needed, see Side Idler Tension Spring Adjustment. If tension is correct, check brake band adjustment. Then check upper and lower brake rod adjustment.
- **DRIVE BELTS ROLL OFF IN REVERSE:** See Drive Pulley Alignment.

ADJUSTMENTS:

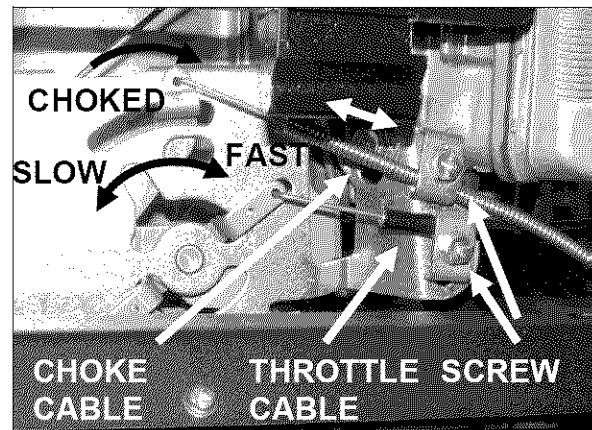
Note: Before making any adjustments or repairs, place the shift lever in the neutral position and the lock brakes. Stop engine and disconnect spark plug wire.

- **HANDLE HEIGHT ADJUSTMENT:** Handle height adjustment is achieved by loosening the four 1/2" bolts securing the handle assembly to the upper portion of the engine deck and raising or lowering the handle assembly for the greatest comfort. Be certain both sides are adjusted the same. After adjustment is made, the upper and lower brake rods may have to be readjusted as well. See brake adjustment.



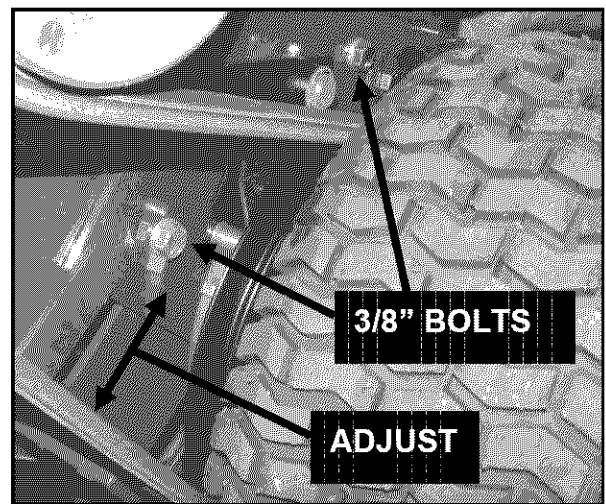
5 maintenance (cont.)

- **THROTTLE/CHOKE CABLE ADJUSTMENT:** Correct throttle cable adjustment allows for full range of motion on engine throttle body in conjunction with throttle control on handle dash. Correct choke cable adjustment engages choke when choke knob is pulled fully out. To adjust either cable, loosen cable clip screw on engine, then slide cable in or out. Retighten screw, recheck, readjust as needed.



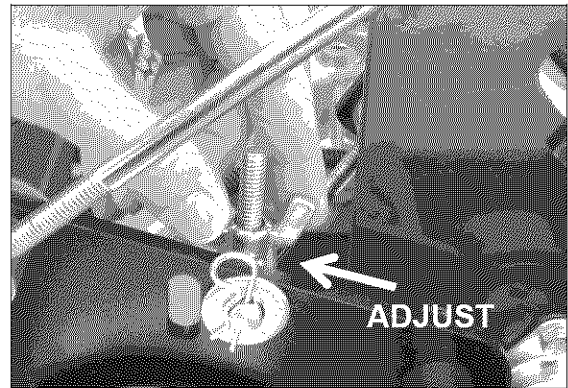
- **SAFETY SWITCH ROD ADJUSTMENT:** Loosen set screws on safety handles, raise each handle approximately 1/4 – 1/2", retighten one set screw, check for uniform contact between both handles with handle assembly, retighten other set screw. Note: tighten set screws to 150 in. lbs.
- **STEERING ADJUSTMENT:** Check tire pressure – 20psi rear, 50psi front. If correct, see Brake adjustment.
- **CUTTING BLADE HEIGHT ADJUSTMENT:** Each blade assembly contains six 1/4" blade spacers: three on the bottom of the spindle assembly between blade and spindle, and three above between the spindle and the blade bolt jam nut. Combined with the axle adjustment set at the factory, cutting height is set at approximately 2-1/2". Cutting blade height can be adjusted to between 1-3/4" and 3-1/4" by removing jam nut and repositioning washers. Retighten jam nut to 60 ft. lbs.

- **AXLE HEIGHT ADJUSTMENT:** Your unit comes with a unique rapid-adjust axle assembly for additional cutting height adjustment. Initial factory adjustment sets the bottom rear edge of the blade deck approximately 1-1/2" above the mowing surface; however, it can be adjusted to 5" in height. To adjust, first position a jack under the rear of engine deck and raise. Loosen the two 3/8" bolts on either side of axle assembly (held in place by press-fit nuts, so only one wrench is needed). Drop or raise axle assembly to provide desired height, then retighten bolts. Remove jack and adjust the front casters by repositioning the spacers. **Note:** Remember that factory-set cutting blade height is 1" above bottom edge of blade deck. **Note:** It is recommended that the front height of the mower be adjusted to 1/4" lower than the rear, to allow for the blades to cut with the leading edge and thus assure a finer cut.

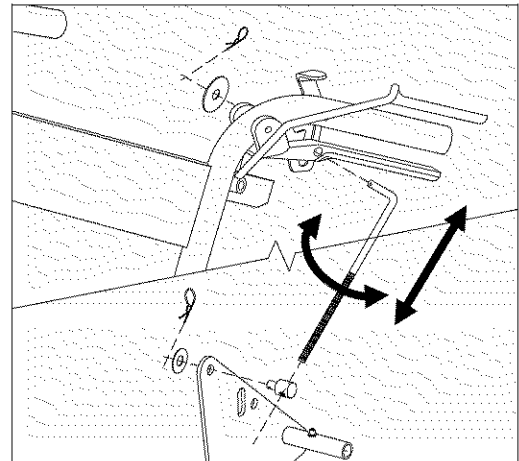


5 maintenance (cont.)

- **BRAKE ADJUSTMENT: LOWER ROD** - The brake assembly has been set at the factory. However, they may periodically need adjustment. As a rule of thumb, the bottom bend of the lower brake rod (3:14) should be $\frac{3}{8}$ " lower than the center of the pivot boss hole in the brake arm (3:5). If adjustment is needed, simply thread the $\frac{5}{16}$ wing nut (3:20) in or out to obtain specified adjustment.

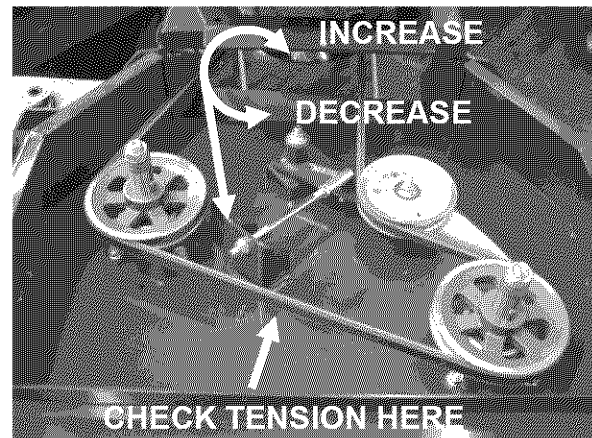


- **UPPER ROD** - To adjust brake handles for comfortable grip, remove bridge pin and fender washer securing top of upper brake rod to brake lever assembly. Slide end of rod out of brake handle, turn rod in or out of rod fitting end replace rod into brake handle, check, readjust as needed; when set to desired position, replace washer and bridge pin. NOTE: After adjustment, be sure mower stops completely and uniformly when brake handles are squeezed.



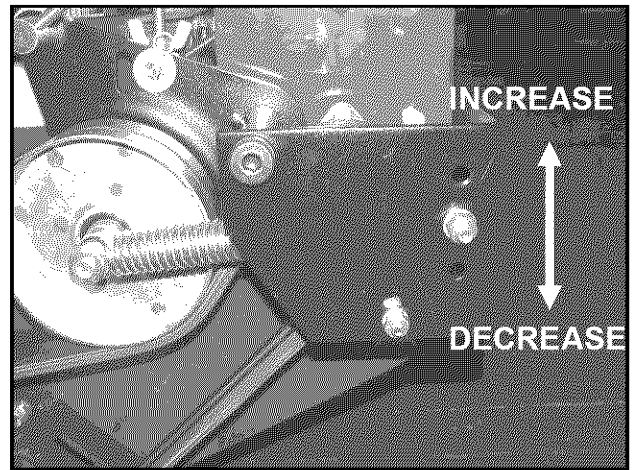
- **BLADE BELT ADJUSTMENT:** We recommend checking belt tension after one hour and then after the next 10 hours of operation, then re-check after each 50 hours of use. To check tension, first engage cutting blades. Place a belt tensioning gauge in the center of the belt span. The gauge should read 10 pounds pressure with a $\frac{3}{8}$ " deflection. To adjust belt tension:

- Loosen the outer nut of the doubled nut set (1:44) securing tensioning rod, then tighten or loosen nut to adjust tension. Recheck, readjust as needed. Tighten inner nut securely against outer nut when final adjustment is achieved.



5 ***maintenance (cont.)***

- **SIDE IDLER TENSION SPRING ADJUSTMENT:** To increase tension, remove nut and lock washer securing rear spring hanger bolt (3:34) in middle tension hole, and replace bolt in uppermost hole. To decrease tension, replace in lowest hole. Replace lock washer and nut, tightening securely. If tension is still slack, replace springs and/or drive belts.



- **BLADE DECK PULLEY ALIGNMENT:** Check initial alignment of each pulley with blade clutch pulley (2:13) on engine shaft with straight edge; adjust as needed by loosening set screws in each pulley and raising or lowering pulley. Retighten set screws to 150 in. lbs. when final adjustment is complete.
- **DRIVE PULLEY ALIGNMENT:** Check to see that drive pulleys are in line with side idler pulley and wheel drive pulley; adjust as needed by loosening set screw in pulley and realigning pulley. Retighten set screws to 150 in. lbs.

REPLACEMENT PARTS:

- Replacement parts are available through your local Snapper dealer.

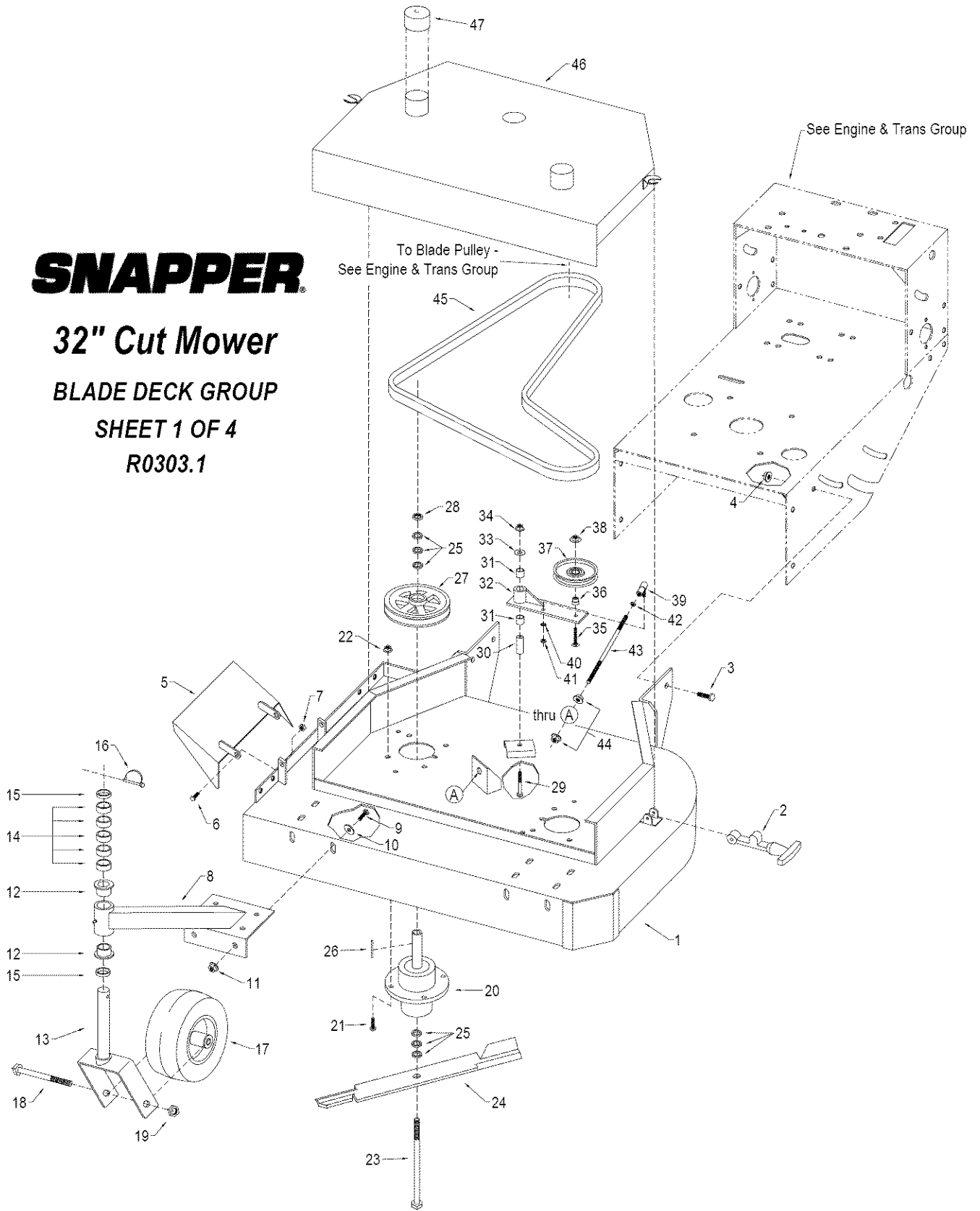
SNAPPER

32" Cut Mower

BLADE DECK GROUP

SHEET 1 OF 4

R0303.1



Snapper 32" Cut Mower

R0303.1

SHEET 1 - BLADE DECK GROUP

REF #	PART #	QTY	DESCRIPTION
1	3010260	1	Blade deck
---	3079166	1	Decal – 'Operating Rules 1-8'
---	3079090	2	Decal – 'Danger – Keep Hands & Feet Away'
---	3079088	1	Decal – 'Danger – Flying Material'
---	3079091	1	Decal – 'Caution-Rotating Parts'
2	3031895	2	Rubber hood strap (w/attaching hardware)
---	3031100	4	3/16 pop rivet (attaches strap receiving cup to hood)
3	3031033	6	3/8-16 x 1" hex bolt
4	3031987	6	3/8-16 small serrated flange nut
5	3027499	1	Discharge deflector
---	3079090	1	Decal – 'Danger – Keep Hands & Feet Away'
---	3079088	1	Decal – 'Danger – Flying Material'
6	3031031	2	5/16-18 x 3/4" hex bolt
7	3031436	2	5/16-18 lock nut
8	3033118	2	Caster arm
---	3031437	2	Grease fitting – 3/16" push-in
9	3031033	12	3/8-16 x 1" hex bolt
10	3031034	12	3/8" flat washer
11	3031987	12	3/8-16 small serrated flange nut
12	3031306	4	1" flange bushing
13	3033117	2	Caster horn
14	3031441	10	Caster height spacer – 1/2"
15	3031442	4	Caster height spacer – 1/4"
---	3031588	2	Caster spacer set (complete 1 side)
16	3031305	2	Lynch pin
17	3033115	2	9-3.50 x 4 wheel & tire assy
18	3033116	2	5/8-11 x 5" hex bolt
19	3031571	2	5/8-11 jam lock nut
20	3036300	2	Spindle assy
21	3031033	8	3/8-16 x 1" hex bolt
22	3031987	8	3/8-16 small serrated flange nut
23	3031892	2	5/8-11 x 9-1/2" hex bolt
24	3021584	2	16" lo-lift blade
25	3031309	12	1/4" spacer
26	3031170	2	Spindle shaft key – 1/4" x 1"
27	3036145	2	Blade belt pulley
---	3031439	4	5/16-18 x 1/4" socket set screw
28	3031893	2	5/8-11 jam nut
29	3031357	1	3/8-16 x 2-1/2" hex bolt
30	3036313	1	Deck idler arm pivot boss
31	3031224	2	3/4" sleeve bushing
32	3023241	1	Deck idler arm
33	3031043	1	1/2" flat washer

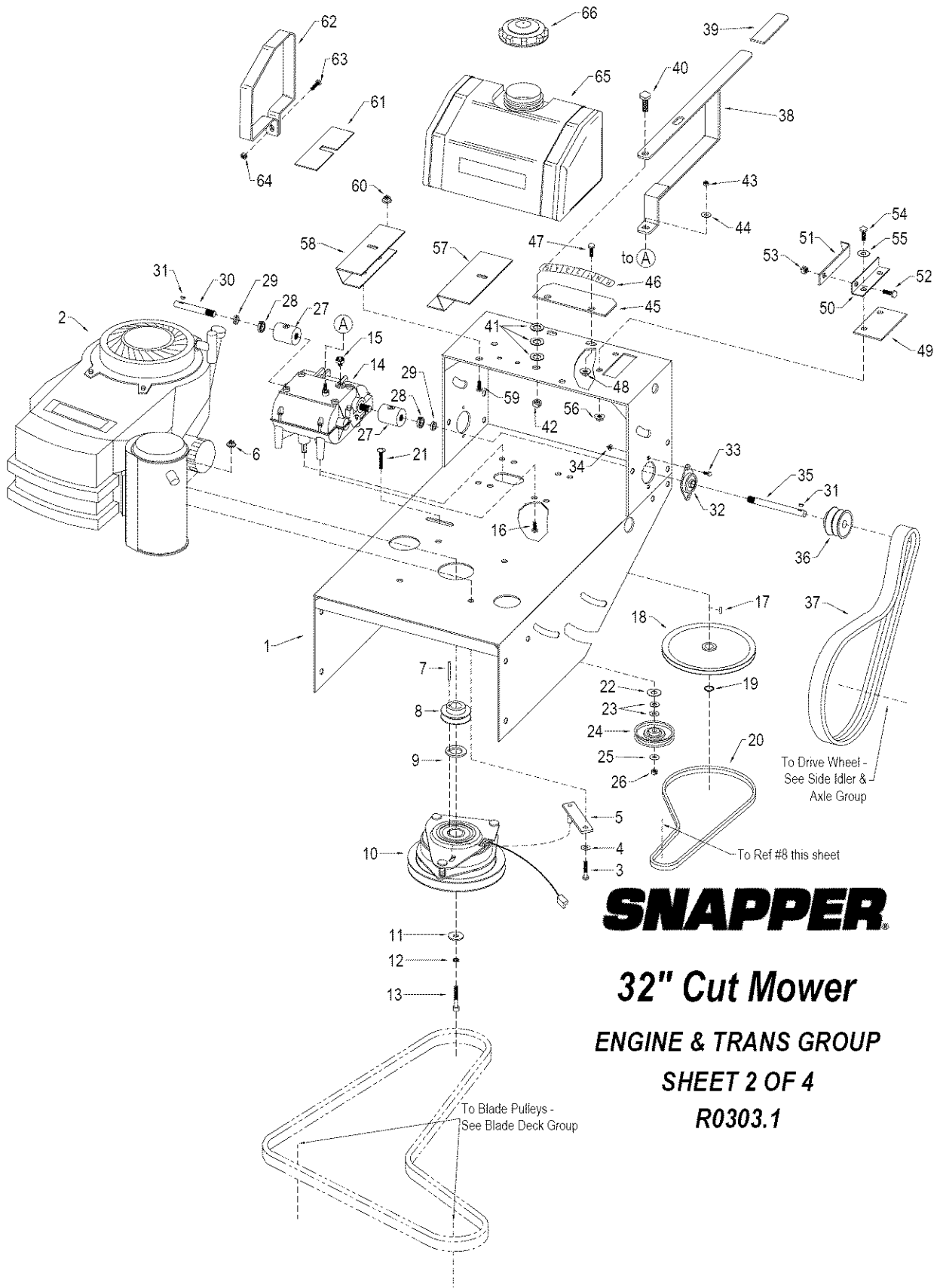
34 3031987 1 3/8-16 small serrated flange nut

Snapper 32" Cut Mower

R0303.1

SHEET 1 - BLADE DECK GROUP (cont.)

REF #	PART #	QTY	DESCRIPTION
35	3031410	1	3/8-16 x 2" carriage bolt
36	3031686	1	3/4" spacer bushing
37	3036120	1	Deck idler pulley
38	3032132	1	3/8-16 large serrated flange nut
39	3031402	1	3/8" ball joint - right hand thread
40	3031008	1	3/8 lock washer
41	3031568	1	3/8-24 jam nut
42	3031568	1	3/8-24 jam nut
43	3036226	1	Deck idler tension rod
44	3031987	2	3/8-16 small serrated flange nut
45	3036206	1	Blade belt
46	3027415	1	Deck hood
---	3031917	1	Mower hood edge trim – 27" length
---	3046580	1	Decal – 'Snapper Pro'
---	3075436	1	Decal – '32'
---	3079090	1	Decal – 'Danger – Keep Hands & Feet Away'
---	3079088	1	Decal – 'Danger – Flying Material'
47	3031900	2	2" rubber hood cap



SNAPPER

32" Cut Mower

ENGINE & TRANS GROUP

SHEET 2 OF 4

R0303.1

Snapper 32" Cut Mower

R0303.1

SHEET 2 - ENGINE & TRANS GROUP

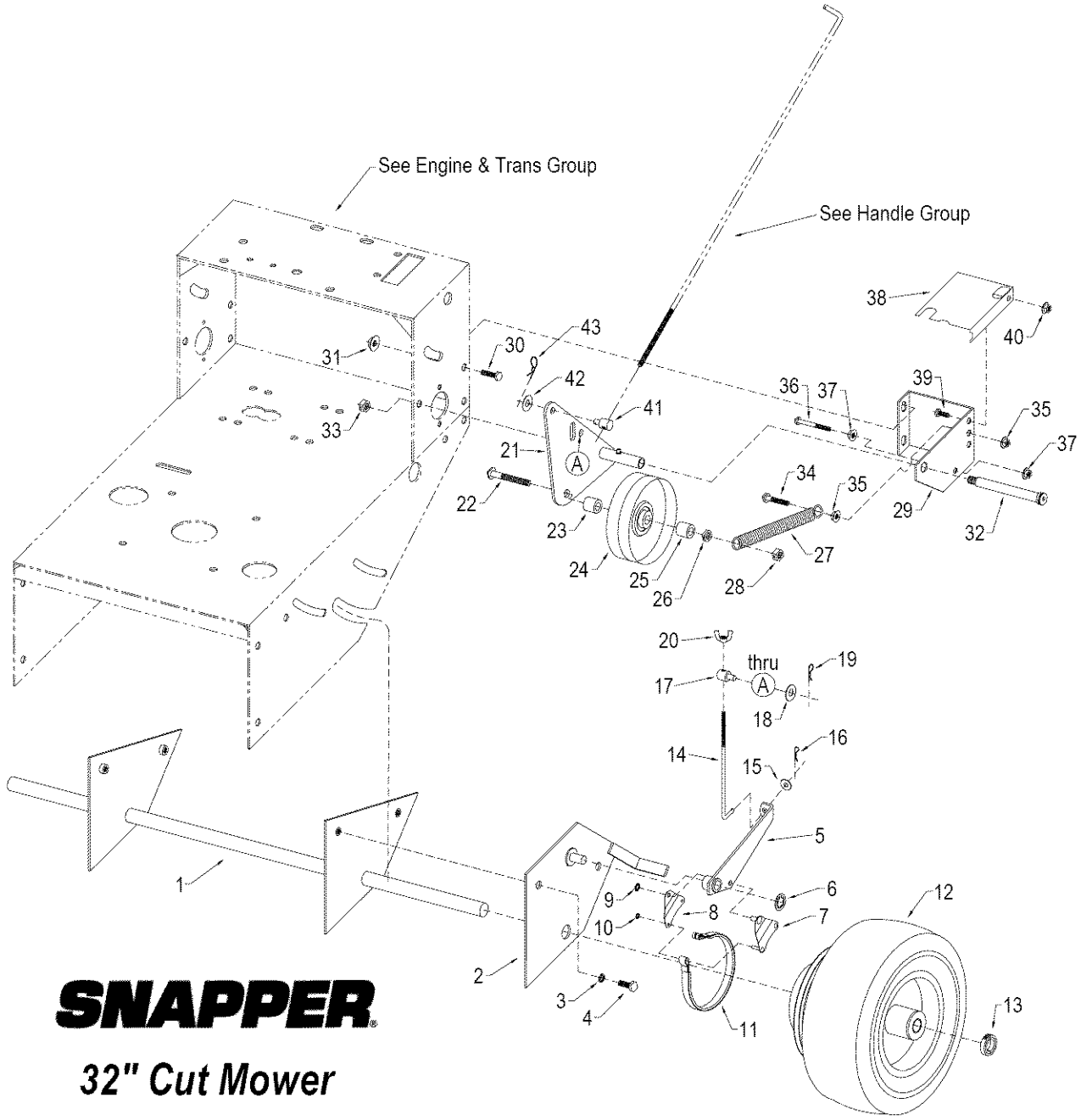
REF #	PART #	QTY	DESCRIPTION (no model designation denotes common)
1	3010261	1	Engine base
---	3027503	1	Blade cam cover plate
---	3031573	2	#10 x 1/2" sheet metal screw
2	3039121	1	Engine - 13hp Kawasaki w/5 amp coil
3	3031006	4	5/16-18 x 1-1/2" hex bolt
4	3031027	1	5/16 flat washer
5	3027273	1	Blade clutch anti-torque pin
6	3031986	4	5/16-18 small serrated flange nut
7	3031665	1	Engine shaft key - 1/4" x 1-7/8"
8	3036143	1	Engine-to-trans pulley
9	3036222	1	1/4" spacer
10	3036325	1	Electric blade clutch
11	3031409	1	7/16" heavy duty washer
12	3031319	1	7/16" lock washer
13	3031414	1	7/16-20 x 2 socket head cap screw
14	3033229	1	Transmission
15	3037088	1	Transmission ball switch
16	3031660	4	5/16-18 x 3/4" 'F' thread bolt
17	3031314	1	#9 woodruff key
18	3036142	1	Transmission pulley
---	3031439	1	5/16-18 x 1/4" socket set screw
19	3031423	1	5/8" snap ring
20	3036140	1	Transmission belt
21	3031388	1	Trans idler bolt
22	3031034	1	3/8" flat washer
23	3025155	2	5/16" SAE washer
24	3036141	1	Trans idler pulley
25	3031027	1	5/16" flat washer
26	3031355	1	3/8-16 lock nut
27	3036301	2	Trans axle coupler
---	3031419	2	Grease fitting - 1/4-28 threaded
28	3031302	2	5/8" locking collar
29	3031309	2	1/4" spacer
30	3036321	1	Trans axle - right
31	3031107	2	#9 woodruff key
32	3036153	2	5/8" bearing unit
33	3031635	4	1/4-20 x 5/8" hex bolt
34	3032129	4	1/4-20 serrated flange nut
35	3036320	1	Trans axle - left
36	3036154	2	2-V drive pulley
---	3031439	2	5/16-18 x 1/4" socket set screw
37	3036155	2	2-V drive belt
38	3023264	1	Shift lever
39	3031722	1	Handle grip - 1/4" x 1-1/4" x 4-1/2"
40	3031461	1	1/2-13 x 2-1/2" hex bolt

Snapper 32" Cut Mower

R0303.1

SHEET 2 - ENGINE & TRANS GROUP (cont.)

REF #	PART #	QTY	DESCRIPTION
41	3023182	3	1/2" oillite washer
42	3031637	1	1/2-13 nylon lock nut
43	3031915	1	3/8-24 nylon lock nut
44	3031034	1	3/8" flat washer
45	3027412	1	Shift panel
46	3079096	1	Shift decal
47	3031031	2	5/16-18 x 3/4" hex bolt
48	3031986	2	5/16-18 small serrated flange nut
49	3027429	1	Manual blade engagement hole cover plate
50	3027420	1	Reverse lockout bracket
51	3027421	1	Reverse lockout bar
52	3031031	1	5/16-18 x 3/4" hex bolt
53	3031436	1	5/16-18 lock nut
54	3031032	2	5/16-18 x 1" hex bolt
55	3031027	2	5/16 flat washer
56	3031986	2	5/16-18 small serrated flange nut
57	3027484	1	Fuel tank mount – left
58	3027485	1	Fuel tank mount – right
59	3031031	4	5/16-18 x 3/4" hex bolt
60	3031986	4	5/16-18 small serrated flange nut
61	3032151	2	Slotted rubber fuel tank pad
62	3034923	2	Fuel tank strap
63	3031292	2	1/4-20 x 1-1/2" hex bolt
64	3032129	2	1/4-20 serrated flange nut
65	3044639	1	Fuel tank
66	-----	1	Fuel cap
---	3031755	1	1/4" rubber fuel line - 12" length
---	3016325	1	In-line fuel shut-off valve
---	3031755	1	1/4" rubber fuel line - 4" length
---	3034095	4	1/2" spring clamp
---	3044640	1	Decal – 'Snapper' (applied to front of fuel tank)



SNAPPER

32" Cut Mower

SIDE IDLER & AXLE GROUP

SHEET 3 OF 4

R0303.1

Snapper 32" Cut Mower

R0303.1

SHEET 3 - SIDE IDLER & AXLE GROUP

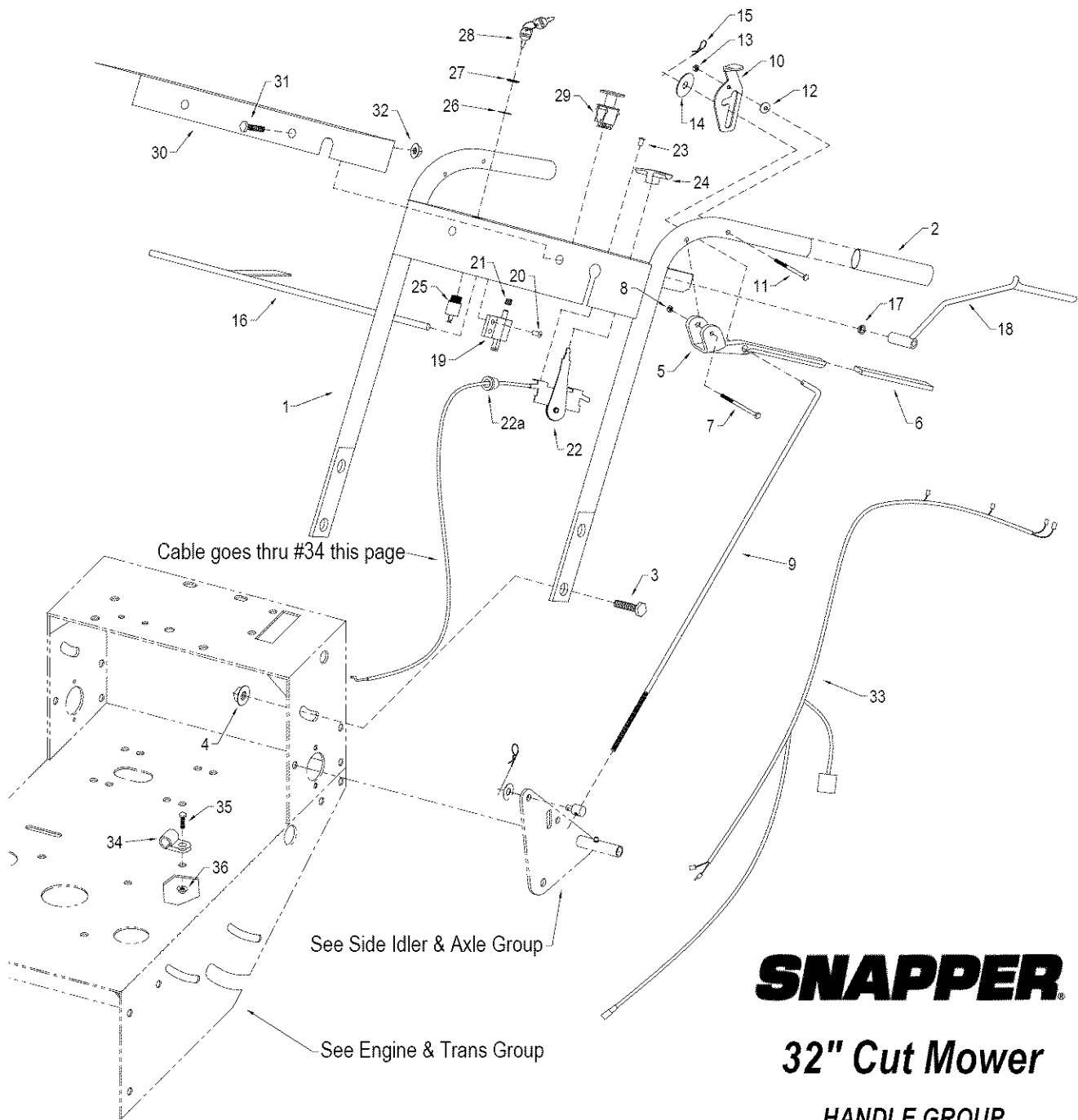
REF #	PART #	QTY	DESCRIPTION
1	3033231	1	Axle assembly
2	3027407	1	Brake pivot plate - left
---	3027408	1	Brake pivot plate - right
3	3031008	4	3/8" lock washer
4	3031033	4	3/8-16 x 1 hex bolt
5	3023152	1	Brake arm - left
---	3023151	1	Brake arm - right
---	3031613	2	Grease fitting – 1/4" push-in
6	3031423	2	5/8" retaining washer
7	3023153	2	Brake link plate w/pins
8	3023154	2	Brake link plate - no pins
9	3031426	2	3/8" push-on washer
10	3031425	4	5/16" push-on washer
11	3031427	2	Brake band
12	3033218	2	13-5.00 x 6 wheel & tire assy (w/pulleys & brake drum)
13	3031583	2	1" locking collar
14	3023150	2	Lower brake rod
15	3031027	2	5/16 flat washer
16	3031382	2	#2 bridge pin
17	3031910	2	Rod fitting end - unthreaded
18	3031027	2	5/16 flat washer
19	3031382	2	#2 bridge pin
20	3031896	2	5/16-18 wing nut w/nylon insert
21	3023255	1	Side idler plate - left
---	3023256	1	Side idler plate - right
---	3031613	2	Grease fitting – 1/4" push-in
22	3031467	2	1/2-13 x 3-1/2" hex bolt
23	3031417	2	1/2" id x 5/8" spacer
24	3036156	2	Side idler pulley
25	3031911	2	1/2" id x 3/8" spacer
26	3031406	2	1/2-13 lock nut
27	3031860	2	Side idler tension spring
28	3031406	2	1/2-13 lock nut
29	3027405	1	Side idler spring bracket - left
---	3027406	1	Side idler spring bracket - right
30	3031033	4	3/8-16 x 1 hex bolt
31	3032132	4	3/8-16 large serrated flange nut
32	3031862	2	5/8 x 4-1/4" shoulder bolt
33	3031406	2	1/2-13 lock nut
34	3031112	2	3/8-16 x 1-1/2" hex bolt
35	3031987	4	3/8-16 small serrated flange nut
36	3031088	2	5/16-18 x 3" hex bolt
37	3031986	4	5/16-18 small serrated flange nut

Snapper 32" Cut Mower

R0303.1

SHEET 3 - SIDE IDLER & AXLE GROUP (cont.)

REF #	PART #	QTY	DESCRIPTION
38	3027511	1	Wheel drive pulley cover – left
---	3027512	1	Wheel drive pulley cover – right
39	3031031	2	5/16-18 x 3/4" hex bolt
40	3031986	2	5/16-18 small serrated flange nut
44	3031383	2	Rod fitting end (trunion)
45	3031027	2	5/16 flat washer
46	3031382	2	#2 bridge pin



SNAPPER

32" Cut Mower

HANDLE GROUP

SHEET 4 OF 4

R0303.1

Snapper 32" Cut Mower

R0303.1

SHEET 4 - HANDLE GROUP

REF #	PART #	QTY	DESCRIPTION
1	3023511	1	Handle assembly
---	3032136	1	Mower dash overlay decal
2	3031283	2	Handle grip - 1"dia x 4-1/2"
3	3031122	4	1/2-13 x 1-1/4" hex bolt
4	3032130	4	1/2-13 serrated flange nut
5	3023259	2	Brake handle
6	3031379	2	Handle grip - 1/4" x 3/4" x 4"
7	3031710	2	1/4-20 x 2" hex bolt
8	3031098	2	1/4-20 lock nut
9	3023131	2	Upper brake rod
10	3023184	1	Brake lock - left
---	3023130	1	Brake lock - right
11	3031292	2	1/4-20 x 1-1/2" hex bolt
12	3031579	2	1/4" spring washer
13	3031098	2	1/4-20 lock nut
14	3031890	2	5/16" fender washer
15	3031381	2	#1 bridge pin
16	3023512	1	Safety switch rod
17	3031693	2	3/8" id flange bushing
18	3023167	1	Safety handle - left
---	3023166	1	Safety handle - right
---	3031439	2	5/16-18 x 1/4" socket set screw
19	3031480	1	Handle safety switch
20	3031100	2	3/16 pop rivet
21	3031585	1	Safety switch spring
22	3035020	1	Throttle control
22a	3032140	1	Snap bushing - .500 id
22b	3035021	1	Auxiliary choke cable (not shown)
---	3079253	1	Decal - 'Pull for Choke' (applied to mower dash overlay)
23	3031100	2	Pop rivet (attaches throttle to handle dash)
---	3031007	2	Throttle cable clip (fastens cable to handlebar)
24	3031584	1	Throttle T-handle
25	3032011	1	Off switch
---	3031808	1	3" jumper wire - 1/4" female to 1/4" ring - Off switch ground
26	3031806	1	5/8" star washer
27	3031581	1	5/8-18 jam nut
28	3039108	1	Key set (set of 2)
29	3032137	1	PTO switch
30	3027504	1	Safety instruction decal bracket
---	3075601	1	Safety instruction decal
31	3031031	2	5/16-18 x 3/4" hex bolt
32	3031986	2	5/16-18 small serrated flange nut
33	3032148	1	Wiring harness

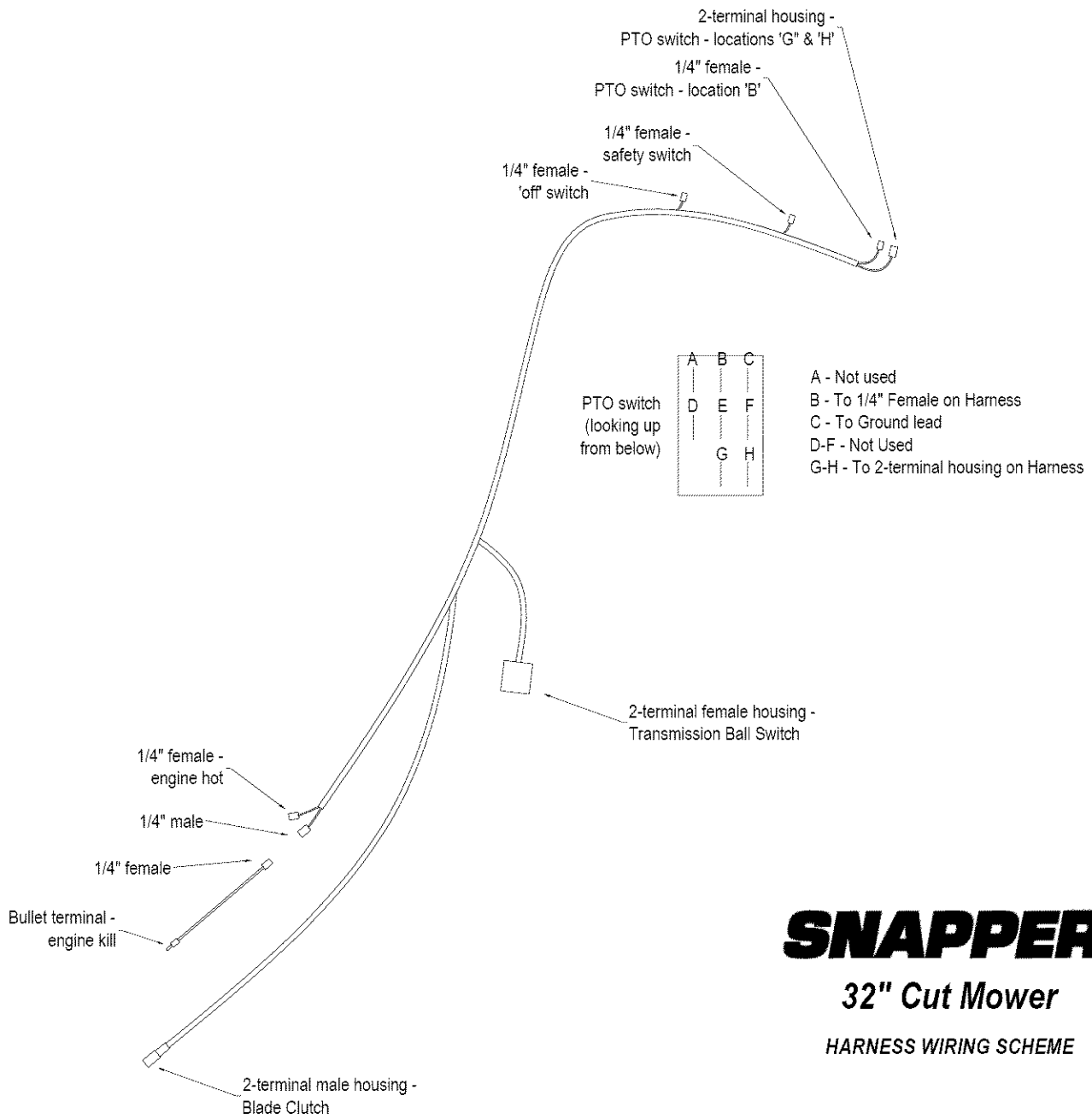
Snapper 32" Cut Mower

R0303.1

SHEET 4 - HANDLE GROUP

REF #	PART #	QTY	DESCRIPTION
---	3031916	1	5" jumper wire – 1/4" female spade to bullet terminal – engine kill
---	3031864	2	8" wire tie (secures harness to handlebar)
---	3032149	1	Multi-lead ground wire – to PTO switch, safety switch & off switch
---	3031635	1	1/4-20 x 5/8" hex bolt (secures multi-lead ground to under handle dash)
---	3031806	1	1/4" star washer
---	3032129	1	1/4-20 serrated flange nut
34	3032012	1	Cable clip (holds throttle and choke cable routings in place)
35	3031635	1	1/4-20 x 5/8" hex bolt
36	3032129	1	1/4-20 serrated flange nut

ALL SPECIFICATIONS SUBJECT TO CHANGE WITHOUT NOTICE



SNAPPER

32" Cut Mower

HARNES WIRING SCHEME

SNAPPER[®]

McDonough, GA 30253 U.S.A.

GVTP SM32-R0303.1