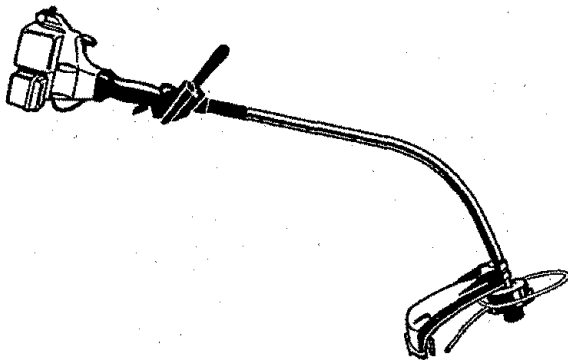


Operator's Manual

CRAFTSMAN[®]
24cc/1.46 cu.in. 2-Cycle
17 Inch Cutting Path
GASOLINE WEEDWACKER[®]

Model No.
358.796190



SAFETY

ASSEMBLY

OPERATION

MAINTENANCE

PARTS LIST

ESPAÑOL



WARNING:
Read and follow all Safety Rules and Operating Instructions before first use of this product.



For answers to your questions about this product:
Call 7 am-7 pm, Mon-Sat; Sun, 10 am-7 pm
1-800-235-5878

Sears, Roebuck and Co., Hoffman Estates, IL 60179 USA

TABLE OF CONTENTS

Warranty Statement	2	Storage	10
Safety Rules	2	Troubleshooting Chart	11
Assembly	4	Emissions Statement	12
Operation	5	Repair Parts List	14
Maintenance	8	Spanish	17
Service & Adjustments	9	Parts and Ordering	Back Cover

WARRANTY STATEMENT

FULL ONE YEAR WARRANTY ON CRAFTSMAN GAS POWERED WEEDWACKER® LINE TRIMMER

For one year from the date of purchase, when this Craftsman Gas Powered Weedwacker® Line Trimmer is maintained, lubricated, and tuned up according to the operating and maintenance instructions in the Operator's Manual, Sears will repair, free of charge, any defect in materials or workmanship.

This warranty excludes nylon line, spark plug, and air filter, which are expendable parts and become worn during normal use.

If this Weedwacker® Line Trimmer is used for commercial purposes, this warranty applies for only 90 days from the date of purchase. If this Weedwacker® Line Trimmer is used for rental purposes, this warranty applies for only 30 days from the date of purchase. This warranty applies only while this product is in use in the United States.

WARRANTY SERVICE IS AVAILABLE BY RETURNING THE WEEDWACKER® LINE TRIMMER TO THE NEAREST SEARS SERVICE CENTER IN THE UNITED STATES.

This warranty gives you specific legal rights, and you may also have other rights which vary from state to state.

Sears, Roebuck and Co., D/817 WA Hoffman Estates, IL 60179

SAFETY RULES

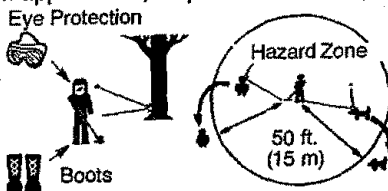
WARNING: When using gardening appliances, basic safety precautions must always be followed to reduce the risk of fire and serious injury. Read and follow all instructions.

This power unit can be dangerous! Operator is responsible for following instructions and warnings on unit and in manual. Read entire Operator's Manual before using unit! Be thoroughly familiar with the controls and the proper use of the unit. Restrict the use of this unit to persons who have read, understand, and will follow the instructions and warnings on the unit and in the manual. Never allow children to operate this unit.

DANGER: Never use blades or flailing devices. This unit is designed for line trimmer use only. Use of any other accessories or attachments will increase the risk of injury.



WARNING: Trimmer line throws objects violently. You and others can be blinded/injured. Wear eye and leg protection. Keep body parts clear of rotating line. Keep children, bystanders, and animals 50 feet (15 m) away. If approached, stop unit immediately.



Safety information on the unit

- If situations occur which are not covered in this manual, use care and good judgement. If you need assistance, contact Sears Service or call the 1-800 number listed on the front of this manual.

OPERATOR SAFETY

- Always wear safety eye protection.
- Always wear long pants, long sleeves, boots, and gloves. Wearing safety leg guards is recommended. Do not go barefoot or wear sandals. Stay clear of spinning line.
- Secure hair above shoulder length. Secure or remove loose clothing or clothing with loosely hanging ties, straps, tassels, etc. They can be caught in moving parts.
- Do not operate when you are tired, ill, or under the influence of alcohol, drugs, or medication.
- Wear hearing protection if you use unit for more than 1-1/2 hours per day.
- Never start or run inside a closed room or building. Breathing exhaust fumes can kill.
- Keep handles free of oil and fuel.

UNIT / MAINTENANCE SAFETY

- Disconnect the spark plug before performing maintenance except carburetor adjustments.
- Look for and replace damaged or loose parts before each use. Look for and repair fuel leaks before use. Keep in good working condition.
- Replace trimmer head parts that are chipped, cracked, broken, or damaged in any other way before using the unit.
- Make sure unit is assembled correctly as shown in this manual.
- Make carburetor adjustments with lower end supported to prevent line from contacting any object.
- Keep others away when making carburetor adjustments.
- Use only recommended Craftsman accessories and replacement parts.

FUEL SAFETY

- Mix and pour fuel outdoors.
- Keep away from sparks or flames.
- Use a container approved for fuel.
- Do not smoke or allow smoking near fuel or the unit.
- Wipe up all fuel spills.

- Move at least 10 feet (3 meters) away from fueling site before starting engine.
- Stop engine and allow to cool before removing fuel cap.

CUTTING SAFETY

- Use only for trimming, mowing, edging, and sweeping. Do not use for pruning or hedge trimming.
- Inspect the area before each use. Remove objects (rocks, broken glass, nails, wire, etc.) which can be thrown by or become entangled in line. Hard objects can damage the trimmer head and be thrown causing serious injury.
- Keep firm footing and balance. Do not overreach.
- Keep all parts of your body away from muffler and spinning line. Keep engine below waist level. A hot muffler can cause serious burns.
- Cutting on left side of the shield will throw debris away from the operator.

TRANSPORTING AND STORAGE

- Allow engine to cool; secure unit before storing or transporting in vehicle.
- Empty the fuel tank before storing or transporting the unit. Use up fuel left in the carburetor by starting the engine and letting it run until it stops.
- Store unit and fuel in area where fuel vapors cannot reach sparks or open flames from water heaters, electric motors or switches, furnaces, etc.
- Store unit so line limiter cannot accidentally cause injury. The unit can be hung by the tube.
- Store unit out of reach of children.
- If situations occur which are not covered in this manual, use care and good judgment. If you need assistance, call 1-800-235-5878.

SPECIAL NOTICE: This unit is not equipped with a temperature limiting muffler and spark arresting screen which meets the requirements of California Codes 4442 and 4443. All U.S. forest land and the states of California, Idaho, Maine, Minnesota, New Jersey, Oregon, and Washington require by law that many internal combustion engines be equipped with a spark arrestor screen. If you operate in a locale where such regulations exist, you are

legally responsible for installing and maintaining the operating condition of these parts. Failure to do so is a viola-

tion of the law. Contact your Sears Service Center for the correct parts.

ASSEMBLY

CARTON CONTENTS

Check carton contents against the following list.

Model 358.796190

- Trimmer
- Shield with wing nut
- Assist Handle with bolt and knob
- Container of Oil
- Spool with 20 ft. of line

Examine parts for damage. Do not use damaged parts.

NOTE: If you need assistance or find parts missing or damaged, call 1-800-235-5878.

It is normal for the fuel filter to rattle in the empty fuel tank.

Finding fuel or oil residue on muffler is normal due to carburetor adjustments and testing done by the manufacturer.

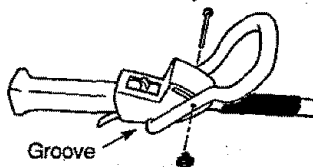
ASSEMBLY

WARNING: If received assembled, repeat all steps to ensure your unit is properly assembled and all fasteners are secure.

Be sure to assemble the handle to the unit before you assemble the shield.

ATTACHING THE HANDLE

(some units are already assembled)



- Assemble handle to the unit as shown; make sure bottom of handle is seated in the groove in the trigger housing.

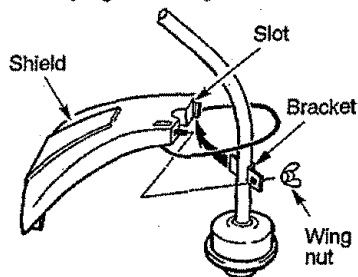
NOTE: Knob must be assembled on the right hand side of the unit as shown in the illustration.

- Make sure the bolt is seated into the hex-shaped hole in the handle.
- Pivot handle to a comfortable position.
- Tighten handle securely.

ATTACHING SHIELD

WARNING: The shield must be properly installed. The shield provides partial protection from the risk of thrown objects to the operator and others and is equipped with a line limiter which cuts excess line to the proper length. The line limiter (on underside of shield) is sharp and can cut you. For proper orientation, see illustration in Operation section.

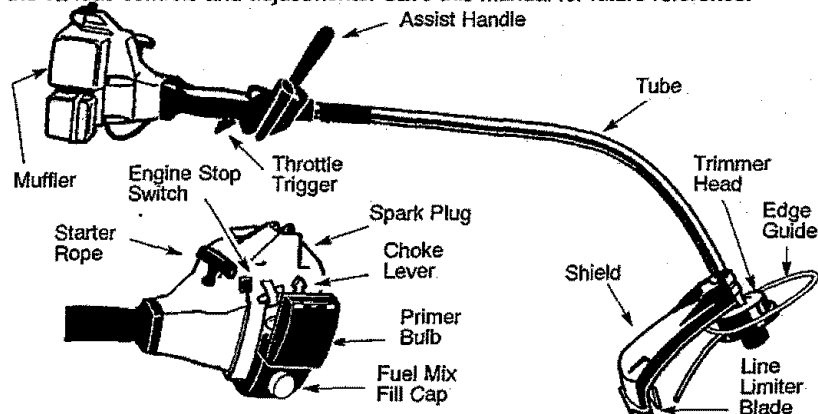
- Remove wing nut from shield.
- Insert bracket into slot as shown.
- Pivot shield until bolt passes through hole in bracket.
- Securely tighten wing nut onto bolt.



OPERATION

KNOW YOUR TRIMMER

READ THIS OPERATOR'S MANUAL AND SAFETY RULES BEFORE OPERATING YOUR UNIT. Compare the illustrations with your unit to familiarize yourself with the location of the various controls and adjustments. Save this manual for future reference.



ENGINE STOP SWITCH

The engine stop switch is used to stop the engine. Push and hold the engine stop switch in the STOP or OFF position until the engine has fully stopped.

PRIMER BULB

The primer bulb removes air from the fuel lines and fills them with fuel. This allows you to start the engine with fewer pulls on the starter rope. Activate the primer bulb by pressing it and allowing it to return to its original form.

CHOKER

The choke helps to supply fuel to the carburetor during starting. This allows you to start a cold engine. Activate the choke by moving choke lever to Full Choke. After engine has started, move choke lever to Off Choke.

EDGE GUIDE

The edge guide protects the unit from contacting the ground during edging.

BEFORE STARTING ENGINE

WARNING: Be sure to read the fuel information in the safety rules before you begin. If you do not understand the safety rules, do not attempt to fuel your unit. Call 1-800-235-5878.

FUELING ENGINE

This engine is certified to operate on unleaded gasoline. Before operation, gasoline must be mixed with a good quality 2-cycle air-cooled engine oil. We recommend Craftsman brand oil. Mix gasoline and oil at a ratio of 40:1 (A 40:1 ratio is obtained by mixing 3.2 ounces of oil with 1 gallon of unleaded gasoline). DO NOT USE automotive oil or boat oil. These oils will cause engine damage. When mixing fuel, follow instructions printed on container. Once oil is added to gasoline, shake

container momentarily to assure that the fuel is thoroughly mixed. Always read and follow the safety rules relating to fuel before fueling your unit.

IMPORTANT

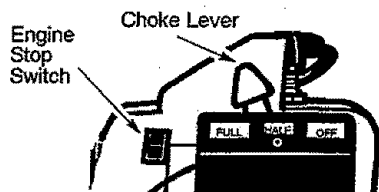
Experience indicates that alcohol blended fuels (called gasohol or using ethanol or methanol) can attract moisture which leads to separation and formation of acids during storage. Acidic gas can damage the fuel system of an engine while in storage.

To avoid engine problems, empty fuel system before storage for 30 days or longer. Drain gas tank, start engine and let it run until fuel lines and carburetor are empty. Use fresh fuel next season. Never use engine or carburetor cleaner products in the fuel tank or permanent damage may occur. See the STORAGE section for additional information.

HOW TO STOP YOUR UNIT

Push and hold the engine stop switch in the STOP or OFF position until the unit has fully stopped.

STARTING YOUR ENGINE



HOW TO START YOUR UNIT

WARNING: The trimmer head will turn while starting the engine. A hot muffler can cause serious burns.

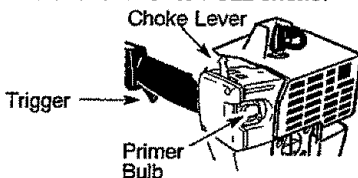
COLD ENGINE STARTING OR STARTING AFTER REFUELING

- Set unit on a flat surface.



Starting Position

- Slowly press primer bulb 6 times.
- Move choke lever to FULL choke.



- Squeeze and hold trigger through all remaining steps.
- Pull starter handle until engine attempts to start, but no more than 5 pulls.
- Move choke lever to HALF choke.
- Pull starter handle until engine runs.
- Allow engine to run 10 seconds, then move choke lever to OFF choke.

RESTARTING A WARM ENGINE

- Move choke lever to OFF choke.
- Pull starter handle until engine starts.
- If engine does not start in 5 pulls, follow instructions in STARTING A COLD ENGINE.

DIFFICULT STARTING OR STARTING A FLOODED ENGINE

Flooded engines can be started by placing the choke lever in the Off Choke position; then, pull the rope to clear the engine of excess fuel. This

could require pulling the starter handle many times depending on how badly the unit is flooded.

If the unit still doesn't start, refer to TROUBLESHOOTING chart or call 1-800-235-5878.

OPERATING INSTRUCTIONS

OPERATING POSITION

ALWAYS WEAR: ← Eye Protection



Cut from your right to your left.

Do not run the engine at a higher speed than necessary. The cutting line will cut efficiently when the engine is run at less than full throttle. At lower speeds, there is less engine noise and vibration. The cutting line will last longer and will be less likely to "weld" onto the spool.

Always release the throttle trigger and allow the engine to return to idle speed when not cutting.

To stop engine:

- Release the throttle trigger.
- Push and hold the engine stop switch in the STOP or OFF position until the unit has fully stopped.

TWIST-N-EDGE

- Pull the tab toward the engine.
- Twist the tube to the edging position; release tab.



TRIMMER LINE ADVANCE

Trimmer line will advance approximately 2 in. (5 cm) each time bottom of trimmer head is tapped on the ground with engine running at full throttle.

The most efficient line length is the maximum length allowed by line limiter. Always keep the shield in place when the tool is being operated.

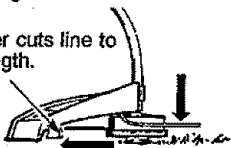
To Advance Line:

- Operate the engine at full throttle.

- Hold the trimmer head parallel to and above the grassy area.
- Tap the bottom of the trimmer head lightly on the ground one time. Approximately 2 in. (5 cm) of line will be advanced with each tap.

To advance line, tap bottom of trimmer head on ground one time.

Line limiter cuts line to proper length.



Always tap the trimmer head on a grassy area. Tapping on surfaces such as concrete or asphalt can cause excessive wear to the trimmer head. If line is worn down to 2 in. (5 cm) or less, more than one tap will be required to obtain the most efficient line length.

WARNING: Use only .080" (2 mm) diameter line. Other sizes of line will not advance properly and can cause serious injury. Do not use other materials such as wire, string, rope, etc. Wire can break off during cutting and become a dangerous missile that can cause serious injury.

CUTTING METHODS

WARNING: Use minimum speed and do not crowd the line when cutting around hard objects (rock, gravel, fence posts, etc.), which can damage the trimmer head, become entangled in the line, or be thrown causing a serious hazard.

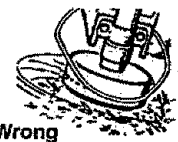
- The tip of the line does the cutting. You will achieve the best performance and minimum line wear by not crowding the line into cutting area. The right and wrong ways are shown below.

Tip of the Line Does The Cutting



Right

Line Crowded Into Work Area



Wrong

- The line will easily remove grass and weeds from around walls, fences, trees and flower beds, but it also can cut the tender bark of trees or shrubs and scar fences. To help avoid damage especially to delicate vegetation

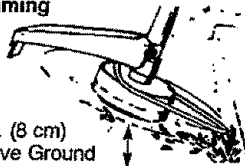
or trees with tender bark, shorten line to 4-5 in. (10-13 cm) and use at less than full throttle.

- For trimming or scalping, use less than full throttle to increase line life and decrease head wear, especially:
 - During light duty cutting.
 - Near objects around which the line can wrap such as small posts, trees or fence wire.
- For mowing or sweeping, use full throttle for a good clean job.

WARNING: Always wear eye protection. Never lean over the trimmer head. Rocks or debris can ricochet or be thrown into eyes and face and cause blindness or other serious injury.

TRIMMING - Hold the bottom of the trimmer head about 3 in. (8 cm) above the ground and at an angle. Allow only the tip of the line to make contact. Do not force trimmer line into work area.

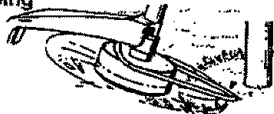
Trimming



3 in. (8 cm)
Above Ground

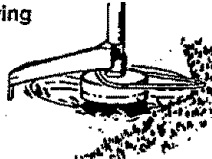
SCALPING - The scalping technique removes unwanted vegetation. Hold the bottom of the trimmer head about 3 in. (8 cm) above the ground and at an angle. Allow the tip of the line to strike the ground around trees, posts, monuments, etc. This technique increases line wear.

Scalping

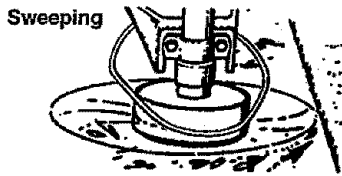


MOWING - Your trimmer is ideal for mowing in places conventional lawn mowers cannot reach. In the mowing position, keep the line parallel to the ground. Avoid pressing the head into the ground as this can scalp the ground and damage the tool.

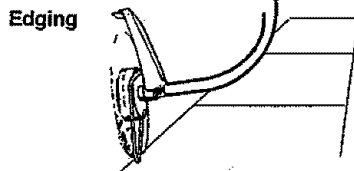
Mowing



SWEEPING - The fanning action of rotating line can be used for a quick and easy clean up. Keep line parallel to and above the surfaces being swept and move the tool from side to side.



EDGING - The Twist-N-Edge feature allows for easy edging of sidewalks, patios, driveways, etc. Adjust trimmer to the edging position. Allow only the tip of the line to make contact. Do not force trimmer line into work area.



MAINTENANCE

MAINTENANCE SCHEDULE

CARE & MAINTENANCE TASK	WHEN TO PERFORM
Check for Loose fasteners and parts	Before each use
Check for damaged or worn parts	Before each use
Clean unit and labels	After each use
Clean air filter	Every 5 hours of operation
Replace spark plug	Yearly

GENERAL RECOMMENDATIONS

The warranty on this unit does not cover items that have been subjected to operator abuse or negligence. To receive full value from the warranty, the operator must maintain unit as instructed in this manual. Various adjustments will need to be made periodically to properly maintain your unit.

CHECK FOR LOOSE FASTENERS AND PARTS

- Spark Plug Boot
- Air Filter
- Housing Screws
- Assist Handle Screws
- Shield Screw

CHECK FOR DAMAGED OR WORN PARTS

Refer replacement of damaged/worn parts to your Sears Service Center.

- Engine Stop Switch - Ensure switch functions properly by pressing and holding the switch in the "Stop" position. Make sure engine stops; then restart engine and continue.
- Fuel Tank - Do not use unit if fuel tank shows signs of damage or leaks.
- Shield - Discontinue use of unit if debris shield is damaged.

CLEAN UNIT & LABELS

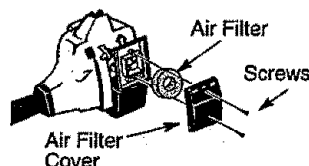
- Clean the unit using a damp cloth with a mild detergent.
- Wipe off unit with a clean dry cloth.

CLEAN AIR FILTER

Do not clean filter in gasoline or other flammable solvent to avoid creating a fire hazard or producing harmful evaporative emissions.

A dirty air filter decreases engine performance and increases fuel consumption and harmful emissions. Always clean after every 5 hours of operation.

- Clean the cover and the area around it to keep dirt and debris from falling into the carburetor chamber when the cover is removed.
- Remove parts as illustrated.
- Wash the filter in soap and water.
- Allow filter to dry.
- Replace parts.



REPLACE SPARK PLUG

Replace the spark plug each year to ensure the engine starts easier and runs better. Set spark plug gap at .025 in. Ignition timing is fixed and nonadjustable.

- Twist, then pull off spark plug boot.

- Remove spark plug from cylinder and discard.
- Replace with Champion RCJ-8Y spark plug and tighten with a 3/4 in. socket wrench (10-12 ft.-lbs).
- Reinstall the spark plug boot.

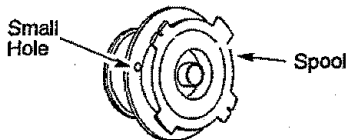
SERVICE AND ADJUSTMENTS

ADVANCING THE CUTTING LINE

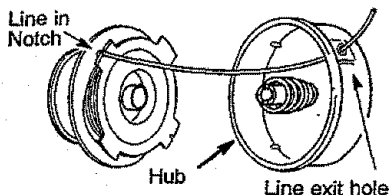
Advance line by tapping bottom of cutting head lightly on the ground while engine is running at full speed. A metal blade attached to the shield will cut the line to the proper length.

REPLACING THE LINE

- Remove the spool by firmly pulling on the tap button.
- Clean entire surface of hub and spool.
- Replace with a pre-wound spool, or cut a length of 20 feet of .080" (2 mm) diameter Craftsman® Pro Trimmer line. Never use wire, rope, string, etc., which can break off and become a dangerous missile.
- Insert about 1/2 inch (1 cm) of one end of the line into the small hole inside the spool.



- Wind the line evenly and tightly onto the spool. Wind in the direction of the arrow found on the spool.
- Push the line into the notch, leaving 3 to 5 inches (7 - 12 cm) unwound.
- Insert the line into the exit hole in the hub as shown in the illustration.
- Align the notch with the line exit hole.
- Push the spool into the hub until it snaps into place.
- Pull the line extending outside the hub to release it from the notch.



CARBURETOR ADJUSTMENT

WARNING: The trimmer head will be spinning during most of this procedure. Wear your protective equipment and observe all safety precautions. After making mixture adjustments, recheck idle speed.

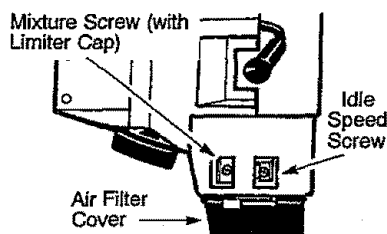
Carburetor adjustment is critical and if done improperly can permanently damage the engine as well as the carburetor. If you require further assistance or are unsure about performing this procedure, call 1-800-235-5878.

Old fuel, a dirty air filter, a dirty fuel filter, or flooding may give the impression of an improperly adjusted carburetor. Check these conditions before adjusting the carburetor.

The carburetor has been carefully set at the factory. Adjustments may be necessary if you notice any of the following conditions:

- Engine will not idle. See "Idle Speed" under adjusting procedure.
- Engine dies or hesitates instead of accelerating. See "Acceleration Check" under adjusting procedure.
- Loss of cutting power. See "Mixture Adjustment" under adjusting procedure.

There are two adjustment screws on the carburetor. They are located in the area just above the primer bulb.



CARBURETOR PRESETS

When making carburetor preset adjustments, do not force plastic limiter caps beyond stops or damage will occur.

If carburetor presets are not needed, proceed to "Adjusting Procedure, Idle Speed."

To adjust presets:

- Turn mixture screw counterclockwise until it stops.
- Turn the idle speed screw clockwise until it stops. Now turn counterclockwise 4-1/2 turns.
- Start engine, cut grass for 3 minutes, and proceed to the adjustment section. If engine does not start, refer to troubleshooting chart or call the 1-800 number listed on the front of this manual.
- If engine performance is acceptable at the preset positions, no further adjustment is necessary.

ADJUSTING PROCEDURE

Idle Speed

Allow engine to idle. Adjust speed until engine runs without stalling.

- Turn clockwise to increase engine speed if engine stalls or dies.
- Turn counterclockwise to decrease speed.

No further adjustments are necessary if performance is satisfactory.

Mixture Adjustment "H"

DO NOT operate engine at full throttle for prolonged periods while making adjustments. Damage to the engine can occur. Extend line to the length allowed by the line limiter and cut some grass. Based on performance while cutting, turn the mixture adjustment in 1/16-turn increments as follows:

- Clockwise until the engine has good power while cutting with no hesitation.

Do not adjust by sound or speed, but judge by how well the engine performs while cutting.

- Counterclockwise if the engine has speed but dies or lacks power while cutting.

After completing adjustments, check for acceleration. Reset if necessary.

Acceleration Check

If engine dies or hesitates instead of accelerating, turn mixture adjustment counterclockwise until you have smooth acceleration. Recheck and adjust as necessary for acceptable performance.

STORAGE

Prepare unit for storage at end of season or if it will not be used for 30 days or more.

WARNING:

- Allow engine to cool, and secure the unit before storing or transporting.
- Store unit and fuel in a well ventilated area where fuel vapors cannot reach sparks or open flames from water heaters, electric motors or switches, furnaces, etc.
- Store unit with all guards in place. Position unit so that any sharp object cannot accidentally cause injury.
- Store unit and fuel well out of the reach of children.

EXTERNAL SURFACES

If your unit is to be stored for a period of time, clean it thoroughly before storage. Store in a clean dry area.

- Lightly oil external metal surfaces.

FUEL SYSTEM

Under Fueling Engine in the Operating Section of this manual, see message labeled **IMPORTANT** regarding the use of gasohol in your engine.

Fuel stabilizer is an acceptable alternative in minimizing the formation of fuel gum deposits during storage. Add stabilizer to the gasoline in the fuel tank or fuel storage container. Follow the mix instructions found on stabilizer container. Run engine at least 5 minutes after adding stabilizer.

CRAFTSMAN 40:1, 2-cycle engine oil (air cooled) is already blended with fuel stabilizer. If you do not use this Sears oil, you can add a fuel stabilizer to your fuel tank.

ENGINE

- Remove spark plug and pour 1 teaspoon of 40:1, 2-cycle engine oil (air cooled) through the spark plug opening. Slowly pull the starter rope 8 to 10 times to distribute oil.
- Replace spark plug with new one of recommended type and heat range.
- Clean air filter.
- Check entire unit for loose screws,

nuts, and bolts. Replace any damaged, broken, or worn parts.

- At the beginning of the next season, use only fresh fuel having the proper gasoline to oil ratio.

OTHER

- Do not store gasoline from one season to another.
- Replace gasoline can if it starts to rust.

TROUBLESHOOTING CHART

TROUBLE	CAUSE	REMEDY
Engine will not start.	<ul style="list-style-type: none"> • Engine flooded. • Fuel tank empty. • Spark plug not firing. • Fuel not reaching carburetor. • Compression low. 	<ul style="list-style-type: none"> • See "Starting Instructions." • Fill tank with correct fuel mixture. • Install new spark plug. • Check for dirty fuel filter; replace. Check for kinked or split fuel line; repair or replace. • Contact Sears Service.
Engine will not idle properly.	<ul style="list-style-type: none"> • Idle speed set too low. • Idle speed set too high. • Carburetor requires adjustment. • Crankshaft seals worn. • Compression low. 	<ul style="list-style-type: none"> • Adjust idle speed screw clockwise to increase speed. • Adjust idle speed screw counter-clockwise to reduce speed. • See "Carburetor Adjustments." • Contact Sears Service. • Contact Sears Service.
Engine will not accelerate, lacks power, or dies under a load.	<ul style="list-style-type: none"> • Air filter dirty. • Spark plug fouled. • Carburetor requires adjustment. • Carbon build up. • Compression low. 	<ul style="list-style-type: none"> • Clean or replace air filter. • Clean or replace spark plug and re-gap. • See "Carburetor Adjustments." • Contact Sears Service. • Contact Sears Service.
Engine smokes excessively.	<ul style="list-style-type: none"> • Choke partially on. • Fuel mixture incorrect. • Air filter dirty. • Carburetor requires adjustment. 	<ul style="list-style-type: none"> • Adjust choke. • Empty fuel tank and refill with correct fuel mixture. • Clean or replace air filter. • See "Carburetor Adjustments."
Engine runs hot.	<ul style="list-style-type: none"> • Fuel mixture incorrect. • Spark plug incorrect. • Carburetor requires adjustment. • Carbon build up. 	<ul style="list-style-type: none"> • See "Fueling Your Unit." • Replace with correct spark plug. • See "Carburetor Adjustments." • Contact Sears Service.

U.S. EPA/CALIFORNIA EMISSION CONTROL WARRANTY STATEMENT

YOUR WARRANTY RIGHTS AND OBLIGATIONS: The U. S. Environmental Protection Agency/California Air Resources Board and SEARS, ROEBUCK AND CO., USA are pleased to explain the emissions control system warranty on your lawn and garden equipment engine. All new utility and lawn and garden equipment engines must be designed, built, and equipped to meet the stringent anti-smog standards. SEARS must warrant the emission control system on your lawn and garden equipment engine for the periods of time listed below provided there has been no abuse, neglect, or improper maintenance of your lawn and garden equipment engine. Your emission control system includes parts such as the carburetor and the ignition system. Where a warrantable condition exists, SEARS will repair your lawn and garden equipment engine at no cost to you. Expenses covered under warranty include diagnosis, parts and labor. **MANUFACTURER'S WARRANTY COVERAGE:** If any emissions related part on your engine (as listed under Emissions Control Warranty Parts List) is defective or a defect in the materials or workmanship of the engine causes the failure of such an emission related part, the part will be repaired or replaced by SEARS. **OWNER'S WARRANTY RESPONSIBILITIES:** As the lawn and garden equipment engine owner, you are responsible for the performance of the required maintenance listed in your Owner's Manual. SEARS recommends that you retain all receipts covering maintenance on your lawn and garden equipment engine, but SEARS cannot deny warranty solely for the lack of receipts or for your failure to ensure the performance of all scheduled maintenance. As the lawn and garden equipment engine owner, you should be aware that SEARS may deny you warranty coverage if your lawn and garden equipment engine or a part of it has failed due to abuse, neglect, improper maintenance, unapproved modifications, or the use of parts not made or approved by the original equipment manufacturer. You are re-

sponsible for presenting your lawn and garden equipment engine to a SEARS authorized repair center as soon as a problem exists. Warranty repairs should be completed in a reasonable amount of time, not to exceed 30 days. If you have any questions regarding your warranty rights and responsibilities, you should contact your nearest authorized service center or call SEARS at 1-800-473-7247. **WARRANTY COMMENCEMENT DATE:** The warranty period begins on the date the lawn and garden equipment engine is purchased. **LENGTH OF COVERAGE:** This warranty shall be for a period of two years from the initial date of purchase. **WHAT IS COVERED: REPAIR OR REPLACEMENT OF PARTS.** Repair or replacement of any warranted part will be performed at no charge to the owner at an approved SEARS servicing center. If you have any questions regarding your warranty rights and responsibilities, you should contact your nearest authorized service center or call SEARS at 1-800-473-7247. **WARRANTY PERIOD:** Any warranted part which is not scheduled for replacement as required maintenance, or which is scheduled only for regular inspection to the effect of "repair or replace as necessary" shall be warranted for 2 years. Any warranted part which is scheduled for replacement as required maintenance shall be warranted for the period of time up to the first scheduled replacement point for that part. **DIAGNOSIS:** The owner shall not be charged for diagnostic labor which leads to the determination that a warranted part is defective if the diagnostic work is performed at an approved SEARS servicing center. **CONSEQUENTIAL DAMAGES:** SEARS may be liable for damages to other engine components caused by the failure of a warranted part still under warranty. **WHAT IS NOT COVERED:** All failures caused by abuse, neglect, or improper maintenance are not covered. **ADD-ON OR MODIFIED PARTS:** The use of add-on or modified parts can be grounds for disallowing a warranty claim. SEARS is not liable to cover failures of warranted

parts caused by the use of add-on or modified parts. **HOW TO FILE A**

CLAIM: If you have any questions regarding your warranty rights and responsibilities, you should contact your nearest authorized service center or call SEARS at 1-800-473-7247.

WHERE TO GET WARRANTY SERVICE: Warranty services or repairs shall be provided at all SEARS service centers. call: 1-800-473-7247. **MAINTENANCE, REPLACEMENT AND REPAIR OF EMISSION RELATED**

PARTS: Any SEARS approved re-

placement part used in the performance of any warranty maintenance or repair on emission related parts will be provided without charge to the owner if the part is under warranty. **EMISION CONTROL WARRANTY**

PARTS LIST: Carburetor, Ignition System: Spark Plug (covered up to maintenance schedule), Ignition Module.

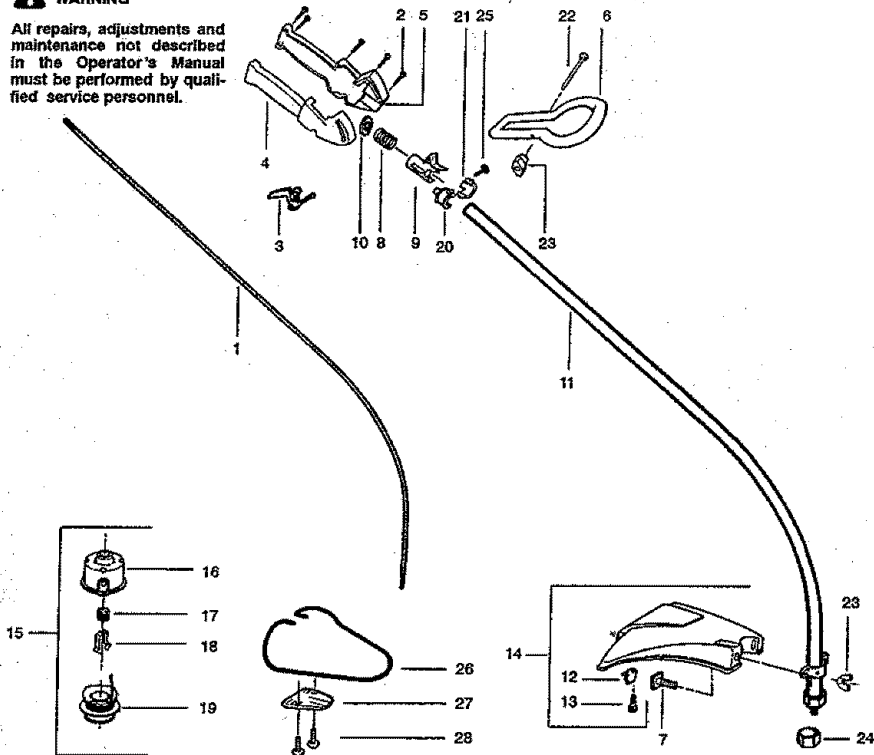
MAINTENANCE STATEMENT: The owner is responsible for the performance of all required maintenance as defined in the owner's manual.

REPAIR PARTS

WARNING

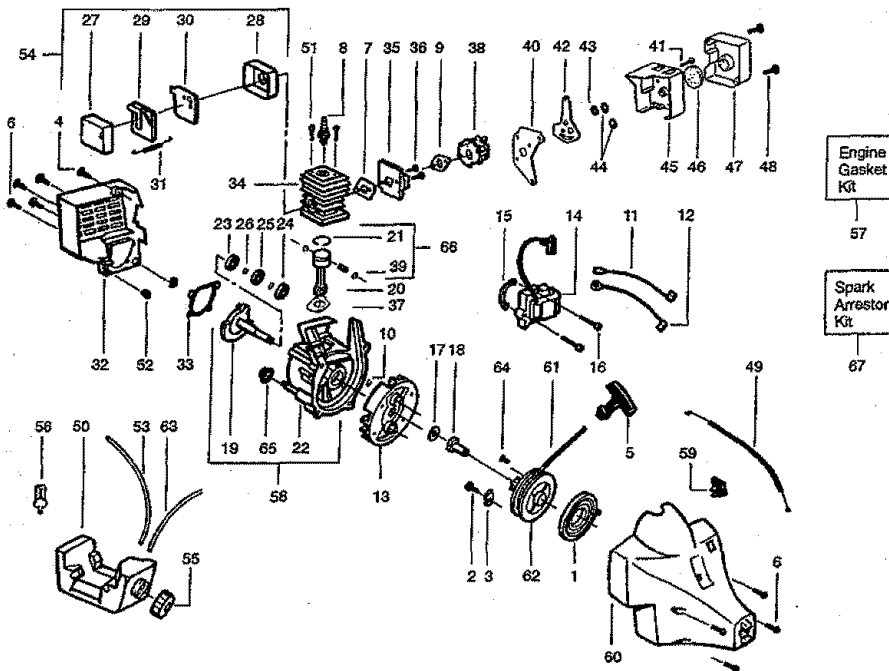
All repairs, adjustments and maintenance not described in the Operator's Manual must be performed by qualified service personnel.

SEARS MODEL 358.796190



Ref.	Part No.	Description	Ref.	Part No.	Description
1.	530053613	Drive Shaft	19.	71-85816	Spool w/Line
2.	530016179	Screw-Throttle Hsg.	20.	530047912	Locator-right
3.	530049107	Trigger	21.	530047911	Locator-left
4.	530047923	Throttle Hsg. (Right)	22.	530016173	Bolt-Handle
5.	530047924	Throttle Hsg. (Left)	23.	530016152	Wingnut
6.	530047919	Assist Handle	24.	530094543	Dust Cup
7.	530015820	Bolt-Shield	25.	530015810	Screw
8.	530042084	Spring-Compression	26.	530049844	Edge Guard
9.	530054060	Actuator	27.	530049845	Clamp-Mounting
10.	530016193	Washer	28.	530015966	Screw
11.	530053609	Drive Shaft Hsg. Ass'y			
12.	530052286	Line Limiter			
13.	530015814	Screw-Line Limiter			
14.	530069930	Shield Kit Ass'y. (Incl. 12 & 13)	Not Shown		
15.	530095500	Cutting Head Ass'y. (Incl. 16-19)		530087757	Operator's Manual
16.	530095380	Hub Ass'y		530047467	Shaft Warning Decal
17.	530401958	Spring		530054054	Shield Decal
18.	530401957	Clip-Retainer-Head		530052301	Starting Instruction Decal
				530047500	Stop Decal

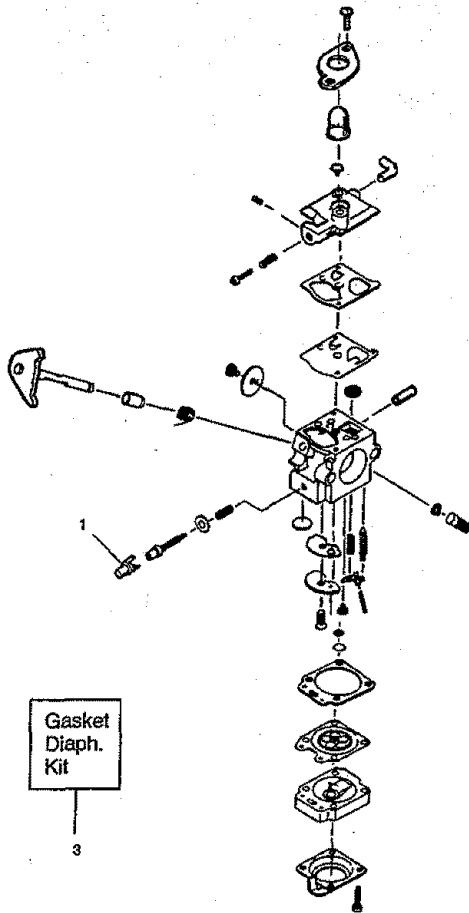
REPAIR PARTS



Ref.	Part No.	Description	Ref.	Part No.	Description	Ref.	Part No.	Description
1.	530042086	Starter Spring	28.	530036577	Muffler Cover	54.	530069870	Muffler Kit (Incl. 27-31)
2.	530015892	Screw	29.	530053500	Muffler Baffle-Exit	55.	530014347	Fuel Cap Assy.
3.	530016168	Retainer-Pulley	30.	530053499	Muffler Baffle-First	56.	530014362	Fuel Pickup Assy
4.	530015880	Screw	31.	530016197	Muffler Spring	57.	530069616	Engine Gasket Kit (Incl. 7,9,33,37)
5.	530027569	Starter Handle	32.	530049377	Rear Shroud	58.	530014729	C'case/C'shaft Assy. (Incl. 10,19,22-26)
6.	530015810	Screw	33.	530019181	Gasket-C'case	59.	530038114	On/Off Switch
7.	530019243	Gasket-Cylinder/Carb.	34.	530069909	Cylinder Kit	60.	530049469	Fan Housing Assy.
8.	Champion	Spark Plug (RCJ-8Y)	35.	530069991	Carb. Adaptor Kit	61.	530069232	Rope Kit
9.	530036421	Gasket-Carb.	36.	530015849	Screw-Carb Adptr.	62.	530069400	Starter Pulley Kit (Incl. 64)
10.	530015945	Retainer Ring-C'case	37.	530019223	Gasket-Cylinder	63.	530069216	Fuel Line-Carb/Tank
11.	530049390	Lead Wire	38.	530069990	Carburetor Assy Kit (Incl. Limiter Cap)	64.	530016080	Screw
12.	530049389	Ground Wire	39.	530015162	Piston Pin Retainer	65.	530036792	Isolator-C'case
13.	530069886	Flywheel Assy.	40.	530047914	Choke Plate	66.	530069987	Piston Kit (Incl. 21,68 & Pin)
14.	530052266	Ignition Module	41.	530015557	Screw	67.	530069380	Spark Arrestor Kit
15.	530036145	Spacer-Ignit. Module	42.	530047916	Choke Lever			
16.	530015954	Screw-Ignit. Module	43.	530015254	Washer			
17.	530015828	Washer-Flat	44.	530015852	Choke Spacer			
18.	530027953	Drive Coupling	45.	530049089	Air Box			
19.	530014532	Crankshaft Assy.	46.	530047932	Air Filter Foam			
20.	530069815	Connecting Rod Assy.	47.	530049079	Air Filter Cover			
21.	530049903	Piston Ring	48.	530015957	Screw-Air Box			
22.	530014861	Crankcase Assy. (Incl. 10 & 23-26)	49.	530049066	Throttle Cable Assy			
23.	530032125	Inner Bearing	50.	530049299	Fuel Tank Assy.			
24.	530032124	Outer Bearing	51.	530015953	Screw-Cylinder			
25.	530019179	C'case Seal	52.	530036793	Shroud Isolator			
26.	530015941	Ret. Ring/C'shaft	53.	530069247	Fuel Line-Carb/Tank			
27.	530036578	Muffler Body						

REPAIR PARTS

Carburetor Assembly Kit Number #53006990 -WA230



Carb.
Repair
Kit

2

Gasket
Diaph.
Kit

3

Ref.	Part No.	Description
1.	530038404	Limiter Cap
2.	530069842	Carburetor Repair Kit
3.	530069844	Gasket/Diaphragm Kit