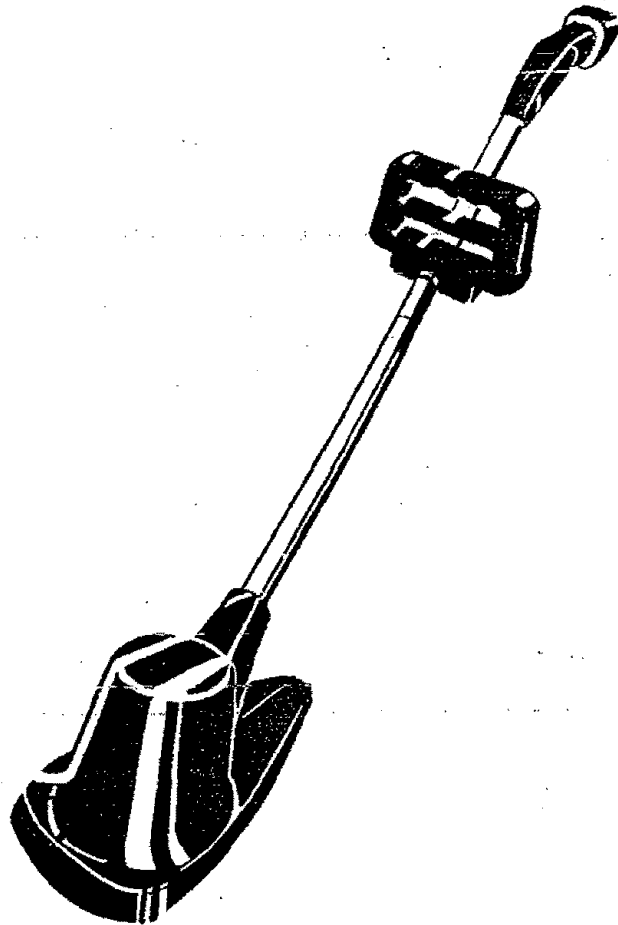


Sears

**owner's  
manual**

MODEL NO.  
257.797901



Sears

**CRAFTSMAN®**

**ELECTRIC WEEDWACKER  
BLADELESS GRASS TRIMMER  
DOUBLE INSULATED**

**CAUTION:**  
Read **RULES** for  
Safe **OPERATION**  
and **INSTRUCTIONS**  
Carefully

- Assembly
- Operating
- Repair Parts

Sold by **SEARS, ROEBUCK AND CO.**, Chicago, IL. 60684 U.S.A.  
and **SIMPSON-SEARS LIMITED**, Toronto, Ontario, Canada.

# IMPORTANT: rules for safe operation

## DOUBLE INSULATION

Double Insulation is a concept in safety, replacing the standard grounded supply system, in electric power tools. The construction of a double insulated tool affords compatible protection to a properly grounded tool without the necessity for using a grounded conductor. The double insulation system eliminates the need for the usual three wire grounded power cord and grounded supply system. Wherever there is electric current in the tool there are two complete sets of insulation to protect the user. All exposed metal parts are isolated from the internal metal motor components with protecting insulation. The lead wires, switch, etc. with their functional insulation have the added protection of non conductive sleeving or housings to complete the double insulation system.

SERVICING OF A TOOL WITH DOUBLE INSULATION REQUIRES EXTREME CARE AND KNOWLEDGE OF THE SYSTEM AND SHOULD BE PERFORMED ONLY BY A QUALIFIED SERVICE TECHNICIAN. FOR SERVICE WE SUGGEST YOU RETURN THE TOOL TO YOUR NEAREST SEARS STORE FOR REPAIR WHICH WILL BE DONE WITH ORIGINAL FACTORY REPLACEMENT PARTS.

SUB-FREEZING TEMPERATURES de-magnetizes the permanent magnets when in operation. Do NOT operate in freezing temperature.

## SAFETY RULES FOR POWER TOOLS

### CAUTION

1. Keep fingers and feet and face clear of line while cutting.
2. Use Safety Goggles.
3. Always wear shoes. Do not operate trimmer while bare-foot or when wearing sandals, canvas or open toed shoes.
4. Keep Children Away. Keep spectators at a safe distance.
5. Do not allow anyone who is not familiar with these rules to use the trimmer.
6. Do not use trimmer as a hedge trimmer.
7. Store indoors in a dry, high, or lock-up place out of reach of children.
8. Don't force this tool. It will work better and safer at the rate it was designed. If motor slows down too much, pull away.
9. Maintain trimmer with care.
10. Do not immerse tool in water or operate in rain.
11. Always unplug cord when tool is unattended.
12. To prevent shock hazard use only a U.L. Approved extension cord suitable for outdoor use. A two wire cord without a ground connection may be used since this tool is double insulated. Cord should be 18 gauge or heavier. More than 100 feet may cause slight loss of power. U.L. Listed cords are available at local Sears Stores.
13. Avoid Dangerous Environment—Do not use this unit in damp or wet areas.



The operation of any power tool can result in foreign objects being thrown into the eyes, which can result in severe eye damage. Always wear safety glasses or eye shields before commencing power tool operation. We recommend Wide Vision Safety Mask for use over spectacles, or standard safety glasses . . . available at Sears retail or catalog stores.

FORESIGHT IS BETTER THAN NO SIGHT.

# ASSEMBLY

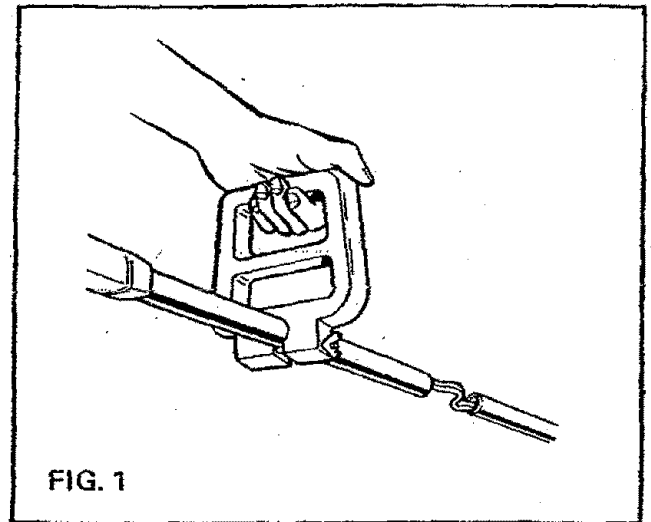
## ASSEMBLY INSTRUCTIONS

Remove trimmer from carton and examine it thoroughly to make sure it is not damaged.

### ATTACHING THE "D" HANDLE

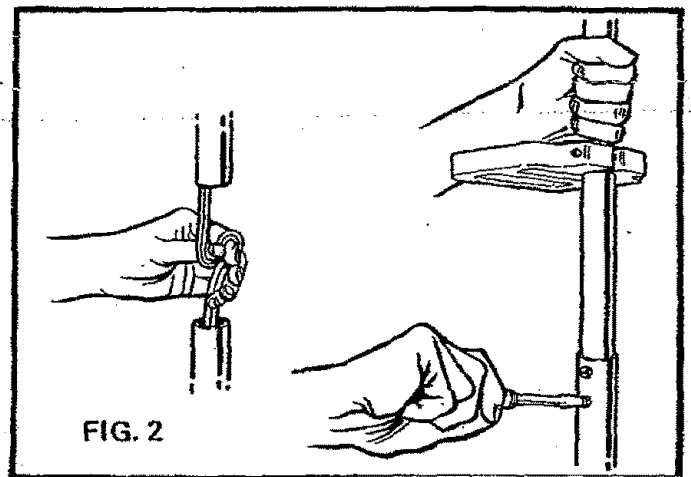
Attach the "D" handle to the upper handle tube before joining the two sections of the tube (see figure 1).

1. Remove the wing nut and bolt from the "D" handle.
2. The wire that is exposed between the two sections of the handle tube will now pass through the slot in the bottom of the "D" handle.
3. Slide the "D" handle up onto the upper tube.
4. Place the bolt into the "D" handle and tighten the wing nut. If the "D" handle is properly mounted, the wing nut will be on the left from the operator's point of view.
5. Complete assembly of the handle tube as shown under "Assembly Instructions" (figure 2).
6. Insert the screws into the handle tube and tighten.
7. Adjust position of "D" handle to conform to height and arm length.



### WARNINGS

Proper Line Length — Do not allow line to extend beyond the recommended line length of 5 5/8" from outer edge of rotary head. Longer line will overload and overheat motor.



## operating instructions

### BEFORE OPERATING

Before Using Your WEEDWACKER, Always Follow These Safety Precautions:

- Always wear SAFETY GOGGLES.
- Cut to your LEFT side.
- Keep people away from you.
- Watch for pieces of wire in the area.
- Tie extension cord to appliance cord (figure 3).

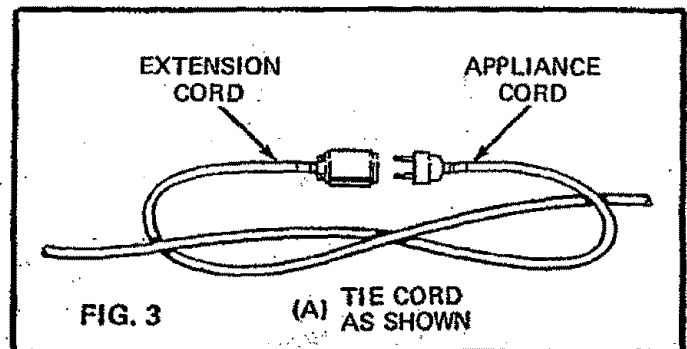
YOUR WEEDWACKER IS ONE OF THE SAFEST LAWN CARE TOOLS (motor driven) BEING PRODUCED TODAY. HOWEVER, DON'T GET A FALSE SENSE OF SAFETY IN USING IT. USE NORMAL SAFETY PROCEDURES AS OUTLINED ABOVE AND GOOD COMMON SENSE.

### Retaining Extension Cord

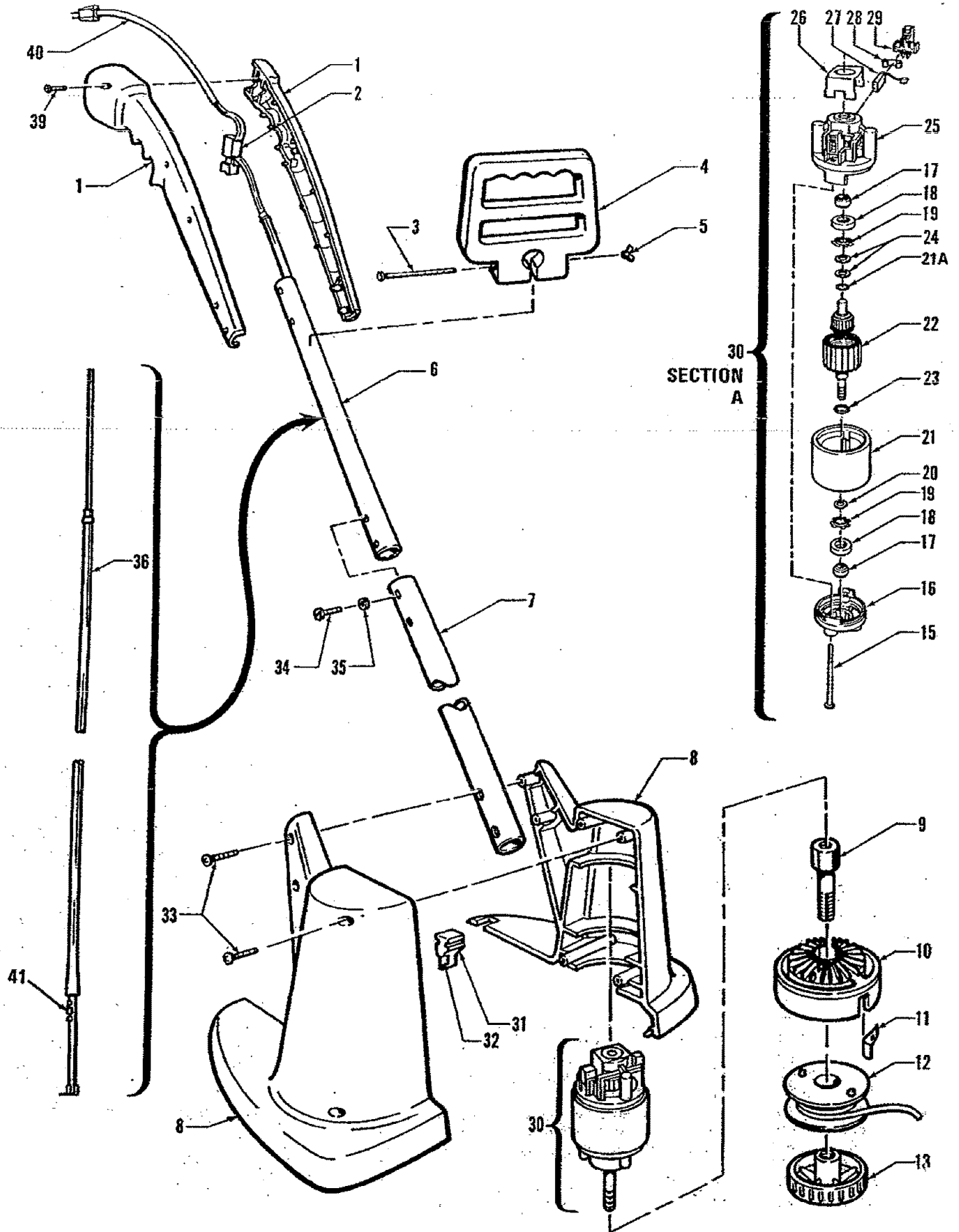
To prevent extension cord from pulling out from appliance cord, tie cords as shown in figure 3.

### HOW TO OPERATE

1. The WEEDWACKER will stir up dust particles which may get into your eyes. Wear safety goggles to prevent this. When you cut to the LEFT SIDE of your WEEDWACKER, it will sling particles FORWARD, away from you. When you cut to the RIGHT SIDE, it will sling particles BACK towards you. ALWAYS CUT TO THE LEFT SIDE ONLY.
2. Your WEEDWACKER can sling objects with adequate velocity to cause harm to others. It will ALWAYS sling small particles of dirt. KEEP PEOPLE AWAY FROM YOU when using your WEEDWACKER just to be safe.
3. Inspect the areas you are going to trim for wires, cord, and any string-like matter to prevent them from getting tangled in the cutting head.



MODEL NO. 257.797901 CRAFTSMAN WEEDWACKER  
Repair Parts



## PARTS LIST

**MODEL NO. 257.797901**

**CRAFTSMAN WEEDWACKER**

PARTS LIST FOR CRAFTSMAN WEEDWACKER

MODEL NO. 257.797901

KEY NO.	PART NO.	DESCRIPTION	QTY.	KEY NO.	PART NO.	DESCRIPTION	QTY.
1.	1924-42	Handle, R.H. and L.H.	1	22.	2251-1	Armature	1
2.	1930-1	Switch, Trigger	1	23.	747-2	Retainer Ring	1
3.	†2181	Bolt, Hex Hd. 1/4-20 x 4	1	24.	2288	Washer, Thrust	2
4.	2827-02	Side Handle	1	25.	2275	End Bell, Brush	1
5.	†437	Wing Nut, 1/4-20.	1	26.	2260	Insulator	1
6.	2225	Tube, Handle, Upper	1	27.	2278	Brush	2
7.	2232	Tube, Handle, Lower	1	28.	2280	Spring, Brush, Constant Load	2
8.	2821-02	Housing, L.H. and R. H.	1	29.	2277	Holder, Brush	2
9.	2233-25	Sleeve, Drive Adapter	1	30.	2250-1	Motor, Complete	1
10.	2231-05	Housing, Head	1	31.	1622-05	Blade Retainer	1
11.	2245	Line Saver	2	32.	1946-2	Blade, Line Cutter	1
12.	2229-05	Spool & Line (85774)	1	33.	2224	Screw, Pan Hd. 10-16 x 1	6
13.	2234-05	Ball Lock	1	34.	97-1	Screw, Hex Hd, Tapping #10 x 3/8	2
15.	2287	Screw, Pan Hd., 10-32 x 3-1/8	2	35.	†713	Washer, Spring Lock #10 size (131096)	2
16.	2276	End Bell, Output	1	36.	1624	Harness	1
17.	2137	Bearing, Self Align	2	39.	1938	Screw, Pan Hd. Hi-Lo, 8-18 x 5/8	6
18.	2286	Oiler, Felt, Bearing	2	40.	2345	Power Cord	1
19.	2285	Retainer, Bearing	2	41.	2780	Rectifier	1
20.	2389-3	Washer, Load	1	42.	88-017-1	Owners Manual (Not shown)	
21.	2270-1	Field Assembly	1				
21A	2467	Retainer Ring	1				

† Denotes standard hardware item — may be purchased locally

"A" — Parts listed in this assembly are shown in the exploded view as Key numbers 15 through 29 and represent an important part of the Double Insulated Safety System. To avoid the possibility of alteration or damage to the Safety System, service requiring these parts should be performed by a qualified service technician. Service required on these parts should be performed by your nearest Sears Electric Motor Shop. Contact your nearest Catalog Order House or Retail Store for servicing of any parts shown in Section "A".

**Sears**  
**owner's**  
**manual**

**MODEL NO.**  
**257.797901**

**Sears**  
**NATIONWIDE**  
**SERVICE**  
**is at**  
**YOUR SERVICE.**

## **How to Order Repair Parts**

The Model Number will be found on a plate attached to your Weedwacker handle tube. Always mention the Model Number when requesting service or repair parts for your Craftsman Weedwacker.

All parts listed herein may be ordered from any SEARS, ROEBUCK AND CO. or SIMPSONS-SEARS LIMITED retail or catalog store.

**WHEN ORDERING REPAIR PARTS, ALWAYS GIVE THE FOLLOWING INFORMATION:**

1. PART NUMBER
2. PART DESCRIPTION
3. MODEL NUMBER - 257.797901
4. NAME OF ITEM - ELECTRIC BLADELESS GRASS TRIMMER DOUBLE INSULATED

If the parts you need are not stocked locally, your order will be electronically transmitted to a Sears Repair Parts Distribution Center for expedited handling.

"Your Sears merchandise has added value when you consider that Sears has service units nationwide staffed with Sears trained technicians . . . professional technicians specifically trained on Sears products, having the parts, tools and equipment to insure that we meet our pledge to you . . . we service what we sell."

### **FULL ONE YEAR WARRANTY ON CRAFTSMAN GRASS TRIMMER 257.797901**

If this Electric Weedwacker fails to perform properly due to a defect in material or workmanship within one year from the date of purchase, Sears will repair it, free of charge.

If this Electric Weedwacker is used for commercial or rental purposes, this warranty applies for only 90 days from the date of purchase.

Warranty service is available by simply contacting the nearest Sears store or Service Center throughout the United States.

This warranty gives you specific legal rights, and you may also have other rights which vary from state to state.

SEARS, ROEBUCK AND CO.  
BSC 41-3  
Sears Tower  
Chicago, IL 60684

**Sold by SEARS, ROEBUCK AND CO., Chicago, IL. 60684 U.S.A.**  
**and SIMPSONS-SEARS LIMITED, Toronto, Ontario, Canada.**