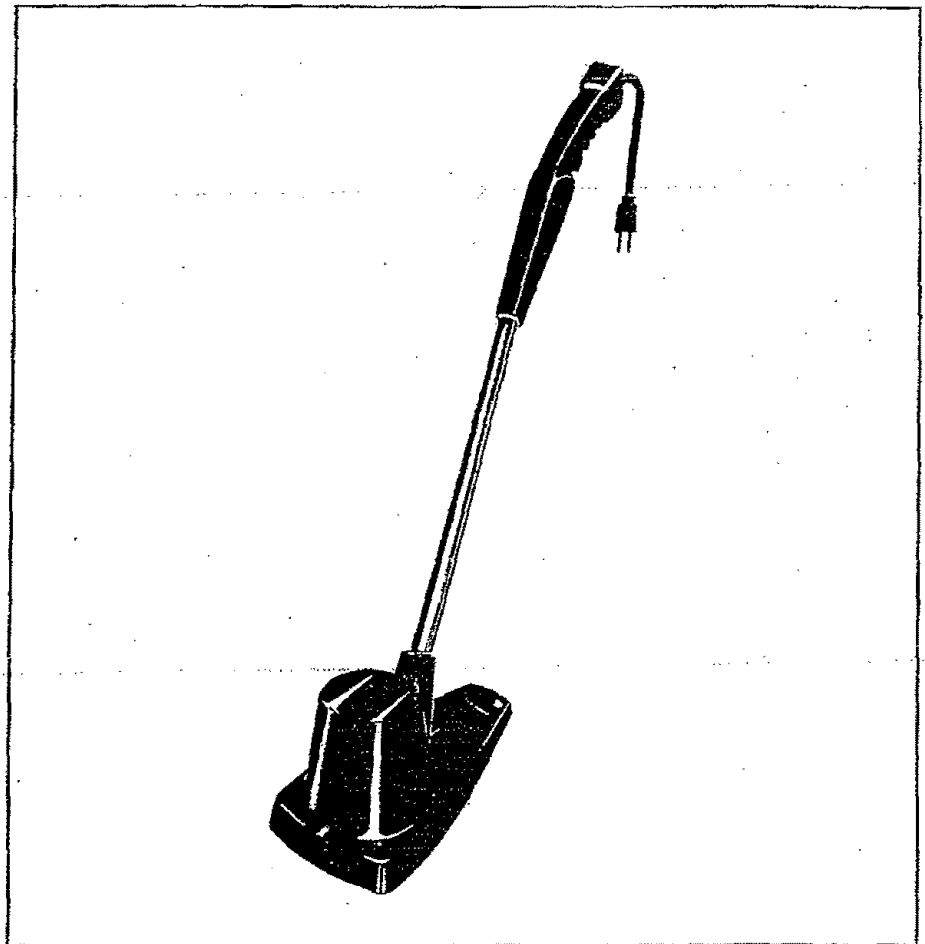


Sears

**owner's
manual**

**MODEL NO.
257.797600**



Sears CRAFTSMAN.

**ELECTRIC WEEDWACKER
BLADELESS GRASS TRIMMER
DOUBLE INSULATED**

CAUTION:
Read **RULES** for
Safe **OPERATION**
and **INSTRUCTIONS**
Carefully

- Assembly
- Operating
- Repair Parts

**Sold by SEARS, ROEBUCK AND CO., Chicago, IL. 60684 U.S.A.
and SIMPSON-SEARS LIMITED, Toronto, Ontario, Canada.**

IMPORTANT: rules for safe operation

DOUBLE INSULATION

Double Insulation is a concept in safety, replacing the standard grounded supply system, in electric power tools. The construction of a double insulated tool affords compatible protection to a properly grounded tool without the necessity for using a grounded conductor. The double insulation system eliminates the need for the usual three wire grounded power cord and grounded supply system. Wherever there is electric current in the tool there are two complete sets of insulation to protect the user. All exposed metal parts are isolated from the internal metal motor components with protecting insulation. The lead wires, switch, etc. with their functional insulation have the added protection of non conductive sleeving or housings to complete the double insulation system.

SERVICING OF A TOOL WITH DOUBLE INSULATION REQUIRES EXTREME CARE AND KNOWLEDGE OF THE SYSTEM AND SHOULD BE PERFORMED ONLY BY A QUALIFIED SERVICE TECHNICIAN. FOR SERVICE WE SUGGEST YOU RETURN THE TOOL TO YOUR NEAREST SEARS STORE FOR REPAIR WHICH WILL BE DONE WITH ORIGINAL FACTORY REPLACEMENT PARTS.

SAFETY RULES FOR POWER TOOLS

CAUTION

1. Keep fingers and feet and face clear of line while cutting.
2. Use Safety Goggles.
3. Always wear shoes. Do not operate trimmer while bare-foot or when wearing sandals, canvas or open toed shoes.
4. Keep Children Away. Keep spectators at a safe distance.
5. Do not allow anyone who is not familiar with these rules to use the trimmer.
6. Do not use trimmer as a hedge trimmer.
7. Store indoors in a dry, high, or lock-up place out of reach of children.
8. Don't force this tool. It will work better and safer at the rate it was designed. If motor slows down too much, pull away.
9. Maintain trimmer with care.
10. Do not immerse tool in water or operate in rain.
11. Always unplug cord when tool is unattended.
12. To prevent shock hazard use only a U.L. Approved extension cord suitable for outdoor use. A two wire cord without a ground connection may be used since this tool is double insulated. Cord should be 18 gauge or heavier. More than 100 feet may cause slight loss of power. U.L. Listed cords are available at local Sears Stores.
13. Avoid Dangerous Environment - Do not use this unit in damp or wet areas.



The operation of any power tool can result in foreign objects being thrown into the eyes, which can result in severe eye damage. Always wear safety glasses or eye shields before commencing power tool operation. We recommend Wide Vision Safety Mask for use over spectacles, or standard safety glasses . . . available at Sears retail or catalog stores.

FORESIGHT IS BETTER THAN NO SIGHT.

YOUR WEEDWACKER IS ONE OF THE SAFEST LAWN CARE TOOLS (motor driven) BEING PRODUCED TODAY. HOWEVER, DON'T GET A FALSE SENSE OF SAFETY IN USING IT. USE NORMAL SAFETY PROCEDURES AS OUTLINED ABOVE AND GOOD COMMON SENSE.

OPERATING INSTRUCTIONS

BEFORE OPERATING

Before Using Your WEEDWACKER, Always Follow These Safety Precautions:

Always wear SAFETY GOGGLES.

Cut to your LEFT side.

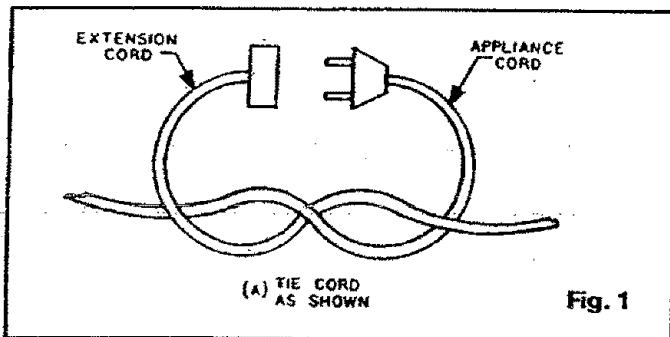
Keep people away from you.

Watch for pieces of wire in the area.

Tie extension cord to appliance cord (figure 1).

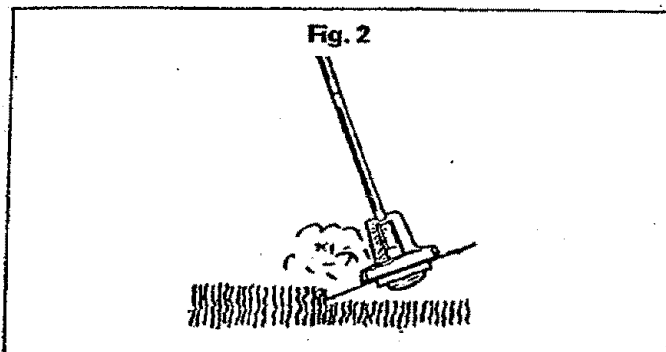
Retaining Extension Cord

To prevent extension cord from pulling out from appliance cord, tie cords as shown in figure 1.



HOW TO OPERATE

1. The WEEDWACKER will stir up dust particles which may get into your eyes. Wear safety goggles to prevent this. When you cut to the LEFT SIDE of your WEEDWACKER, it will sling particles FORWARD, away from you. When you cut to the RIGHT SIDE, it will sling particles BACK towards you. ALWAYS CUT TO THE LEFT SIDE ONLY (see Fig. 2).
2. Your WEEDWACKER can sling objects with adequate velocity to cause harm to others. It will ALWAYS sling small particles of dirt. KEEP PEOPLE AWAY FROM YOU when using your WEEDWACKER just to be safe.
3. Inspect the areas you are going to trim for wires, cord, and any string-like matter to prevent them from getting tangled in the cutting head.
4. **Trimming** — The WEEDWACKER should be tilted slightly with the left or open side down as shown in figure 2.

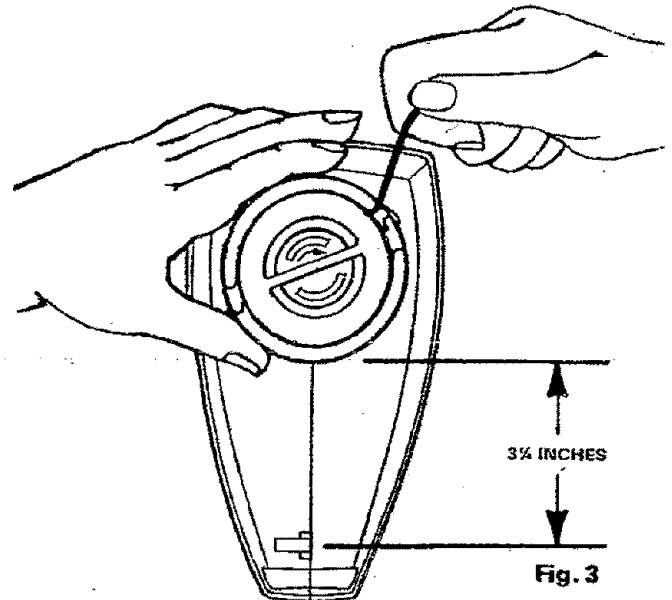


PROPER LINE LENGTH

Nylon line must be proper length to cut efficiently. This should be 3¼ inches as shown in figure 3. If too long it will overload and possibly damage motor.

HOW TO LENGTHEN THE CUTTING LINE

As cord wears additional line may be pulled out by pulling down on cord and unwinding line to the opening on opposite side of rotating head (see figure 3).



To install replacement spool and nylon line. Remove spool (Ref. #9 figure 9) by grasping center rib and twisting left ¼ turn. Pull spool free.

To rewind nylon line. Hold spool in hand with rib side toward you. Wind nylon line clockwise (in direction of arrow). Best results are accomplished with proper length line and maintaining full speed, and cutting only with the tip of the nylon line.

When nylon line becomes frayed, cut off tip.

HOW LONG WILL THE LINE LAST?

This depends upon two (2) factors. 1. Technique. 2. What you are cutting.

1. Technique. Don't force the line. The trick is to let the tip of the line do the cutting.
2. What you are cutting. The line will naturally wear faster when you are cutting against a rock garden as compared to just slashing away at weeds.

SUPPLYING NEW SPOOL or REWINDING SPOOL

WEEDWACKER uses SPECIALLY TREATED MONOFILAMENT NYLON as cutting line. This is available ONLY at Sears stores.

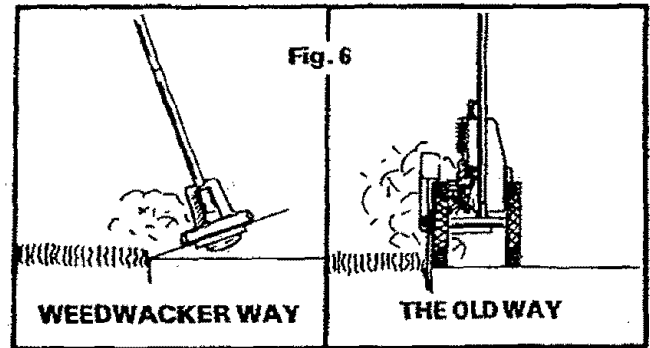
You may purchase a fully wound replacement spool, Part No. 85777 from Sears stores and catalog stores. (Cntd.)

When re-winding, be SURE to wind the line in the direction of the arrow indicated on the spool.

FRAYED ENDS

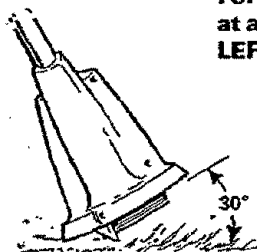
Should your line become frayed, it loses some of its cutting efficiency. To SHARPEN your line, simply snip off the frayed end with a wire snipper – or the like. However, when cutting around bushes having a tender bark, frayed ends work to your advantage.

The Weedwacker is ideal for trimming next to trees, walls, fence and other difficult areas, however, line breakage will occur more frequently from repeated contact against hard objects.



GENERAL TRIMMING

For most trimming the unit is TILTED TO THE LEFT at approximately 30 degrees (Fig. 5).



For most 'trimming', tilt the unit at approximately 30 degrees to the LEFT.

Fig. 5

ALWAYS trim to the LEFT SIDE only because WEEDWACKER will throw the trimming forward. When you trim to the right side, trimmings will be thrown back toward the operator.

HOW TO TRIM WALKWAYS, DRIVEWAYS, CURBS, ETC.

The purpose of EDGING is to keep the grass from growing over walkways, driveways, curbs and the like. Because edging the conventional way was the ONLY way to accomplish this, most people through habit, want to continue edging in this manner. This usually involves DIGGING A TRENCH along the border. We suggest a SAFER and QUICKER METHOD.

Let your grass grow across the trench. Use WEEDWACKER to trim the grass off the walk (or whatever) by SKIMMING ALONG THE TOP OF THE WALK (see illustration below, figure 6).

This method will give your lawn a more 'natural look,' and eliminate the dangers associated with conventional edgers.

MOWING

There is a faster, more efficient way to reach those small hard-to-get-to areas that you can't reach with your lawn mower. USE YOUR WEEDWACKER. Simply pass your WEEDWACKER over the areas you wish to cut, keeping the cutting head parallel to the ground. DO NOT use the usual 30 degree cutting angle when mowing as in figure 5.

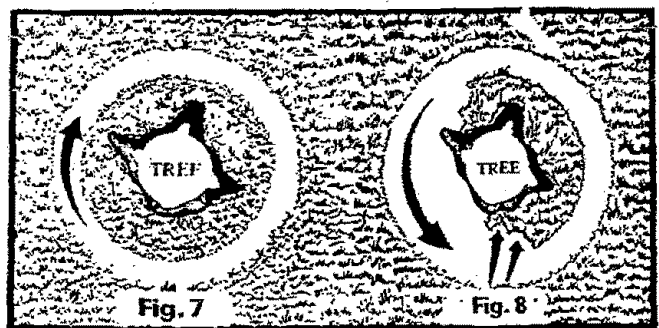
MANICURING — THE PROFESSIONAL YARD-CARE LOOK

For a beautiful manicured look most gardeners "close crop" around trees, bushes, posts, etc. This "close crop" trimming not only improves the appearance of the lawn but it eliminates weekly maintenance in these areas to only three or four times during the entire summer season.

If you'd like to try this, follow the below instructions . . .

STEP 1 — Walk around the tree to the LEFT SIDE, forcing the line into the ground with a 30 degree tilt. Cut the OUTSIDE PERIMETER of the circle (see figure 7 below).

STEP 2 — Next, walk in the OPPOSITE DIRECTION and manicure the INSIDE of the circle, flush to the tree or bush (see figure 8 below).

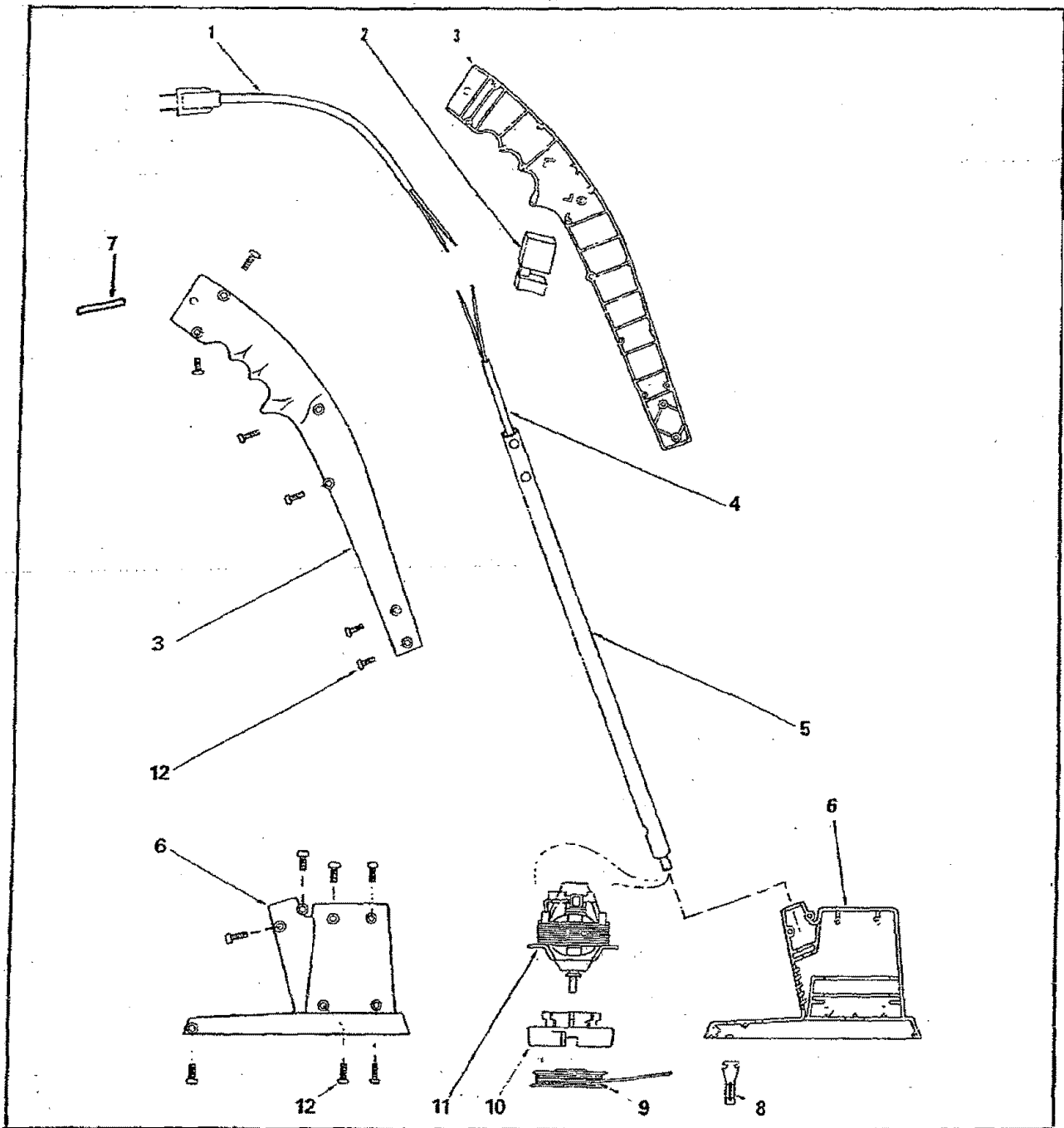


Don't be afraid to go too far out. Make a BIG, WIDE CIRCLE!

RELAX and ENJOY YOUR WEEDWACKER

Your WEEDWACKER is designed for easy cutting. So relax and enjoy working with it. Use your arms and wrists to handle the unit, not your body. With practice, this will become a natural procedure. You should not have to stand on your toes, bend over, lean to one side or the other to operate the unit.

Fig. 9



ELECTRIC WEEDWACKER MODEL 257.797600 PARTS LIST

| REF. | PART NO. | DESCRIPTION | QTY. | REF. | PART NO. | DESCRIPTION | QTY. |
|------|----------|------------------------|------|------|----------|------------------------------|------|
| 1 | 2345 | Power Cord | 1 | 8 | 2927-05 | Blade Retainer | |
| 2 | 1930-1 | Switch | 1 | 9 | 85777 | Spool & Line | 1 |
| 3 | 1924-63 | Handle, L.H. and R.H. | 1 | 10 | 2649-15 | Rotating Head | 1 |
| 4 | 2923 | Harness | 1 | 11 | 00-061 | Motor | 1 |
| 5 | 2920 | Tube, Handle | 1 | 12 | 1938 | Screw, P.H. 8-18 x 5/8 Long. | |
| 6 | 2911-03 | Housing, L.H. and R.H. | 1 | | | Hi Lo Thread | 13 |
| 7 | 2701 | Hang Hook | 1 | 13. | 88-024 | Owners Manual (not shown) | 1 |

DOUBLE INSULATED - WHEN SERVICING USE ONLY IDENTICAL REPLACEMENT PARTS

Sears
owner's
manual

MODEL NO.
257.797600

Sears
NATIONWIDE
SERVICE
is at
YOUR SERVICE.

How to Order Repair Parts

The Model Number will be found on a plate attached to your Weedwacker cover housing. Always mention the Model Number when requesting service or repair parts for your Craftsman Weedwacker.

All parts listed herein may be ordered from any SEARS, ROEBUCK AND CO. or SIMPSONS-SEARS LIMITED retail or catalog store.

WHEN ORDERING REPAIR PARTS, ALWAYS GIVE THE FOLLOWING INFORMATION:

1. PART NUMBER
2. PART DESCRIPTION
3. MODEL NUMBER — **257.797600**
4. NAME OF ITEM — **ELECTRIC BLADELESS GRASS TRIMMER DOUBLE INSULATED**

USE ONLY SEARS REPLACEMENT PARTS.

If the parts you need are not stocked locally, your order will be electronically transmitted to a Sears Repair Parts Distribution Center for expedited handling.

**FULL ONE YEAR WARRANTY ON CRAFTSMAN
ELECTRIC WEEDWACKER 257.797600**

- ❖ If this Craftsman Electric Weedwacker fails to give complete satisfaction within one year from the date of purchase, return it to the nearest Sears store throughout the United States and Sears will repair or replace it free of charge.
- ❖ If any of these Craftsman Electric Weedwackers is used for commercial or rental purposes, this warranty applies for only 90 days from the date of purchase.
- ❖ The warranty gives you specific legal rights and you may also have other rights which vary from state to state.

SEARS, ROEBUCK AND CO.
BSC 41-3
Sears Tower
Chicago, IL 60684

Sold by SEARS, ROEBUCK AND CO., Chicago, IL 60684 U.S.A.
and SIMPSONS-SEARS LIMITED, Toronto, Ontario, Canada.