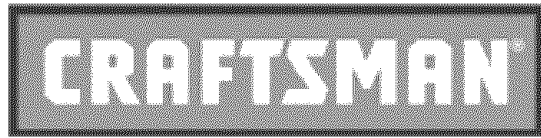


Owner's Manual



Pneumatic **SAND BLASTER**

Model No.
875.167070



WARNING:

Before operating tool, read this manual and follow all Safety Recommendations and Operating Instructions.

- ◆ Safety
- ◆ Warranty
- ◆ Features & Operation
- ◆ Maintenance
- ◆ Español

Distributed by Sears, Roebuck and Co., Hoffman Estates, IL 60179
www.Sears.com

SAFETY INSTRUCTIONS

Read Operating Instructions

Please become familiar with all the instructions and warnings before operating any pneumatic tool.

Always Wear Approved Eye Protection

Impact resistant eye protection should meet or exceed the standards set forth in ANSI Z87.1, Occupational and Educational Eye and Face Protection. Look for marking Z87.1 on your eye protection to ensure that it is an approved style.

Hearing Protection is Recommended

Hearing protection should be used when the noise level exposure equals or exceeds an 8 hour time-weighted average sound level of 85dBA. Process noise, reflective surfaces, other tools being operated nearby, all add to the noise level in a given work area. If you are unable to determine your noise level exposure, we recommend the use of hearing protection.

Avoid Prolonged Exposure to Vibration

Pneumatic tools can vibrate during use. Prolonged exposure to vibration or very repetitive hand and arm movements can cause injury. Discontinue the use of any tool if you experience tingling, numbness, discomfort or pain in your hands or arms. You should consult your physician before resuming use of tool.

90 PSI Maximum

This tool is designed to operate at an air pressure of 125 90 pounds per square inch gauge pressure (125 PSI) maximum, at the tool. Use of higher air pressure can, and may cause injury. Also, the use of higher air pressure places the internal components under loads and stresses they were not designed for, causing premature tool failure.

NOTE: THE AIR SUPPLY SHOULD BE CLEAN, DRY AND PREFERABLY LUBRICATED. FOR BEST RESULTS DRAIN THE MOISTURE FROM YOUR COMPRESSOR DAILY.

WARNING

Some dust created by power sanding, sawing, grinding, drilling and other construction activities contains chemicals known to cause cancer, birth defects or other reproductive harm. Some examples of these chemicals are:

- Lead from lead based paint
- crystalline silica from bricks and cement and other masonry products, and
- arsenic and chromium from chemically-treated lumber.

Your risk from those exposures varies, depending on how often you do this type of work. To reduce your exposure to these chemicals: work in a well ventilated area, and work with approved safety equipment, such as dust masks that are specifically designed to filter out microscopic particles.

WARRANTY

FULL ONE YEAR WARRANTY ON CRAFTSMAN AIR-DRIVE TOOLS

If this Craftsman tool fails to give complete satisfaction within one year from the date of purchase, RETURN IT TO THE NEAREST SEARS STORE IN THE UNITED STATES, and Sears will repair it free of charge. If this Craftsman tool is used for commercial or rental purposes, this warranty applies for only 90 days from the date of purchase. This warranty gives you specific legal rights, and you may also have other rights which vary from state to state.

Distributed by Sears, Roebuck and Co., Dept. 817WA, Hoffman Estates, IL 60179.

FEATURES/SPECIFICATIONS

The Craftsman Model 875.167070 Sand Blaster is ideal for removing rust and paint from a variety of surfaces.

Features

- Compact Design.
- Maintenance free.
- Complete with three tips.

Specifications

Tip Size.....	4.8 mm or 3/16"
Weight.....	2.42 lbs.
Sand Inlet Pipe Size.....	13mm or 1/2"
Average air consumption.....	9.5 SCFM
Suction Capacity.....	0.06 MPA
Recommended hose size.....	3/8" I.D.
Air inlet.....	1/4" NPT
Maximum Air Pressure.....	125 PSI

INSTALLATION / PRE-OP

Pre-Operation

Before the tool is connected to the air supply, clear the air hose of accumulated dust and moisture by running air freely through the air hose for 5-10 seconds. Before removing a tool for service, make sure the air line is shut-off at the compressor. This will prevent the tool from operating if the throttle is accidentally engaged.

Installation (See figure 1)

This tool is designed to operate at 40 - 125 psi. Lower pressure (below 40 psi) will reduce performance of the tool while higher air pressure (over 125 psi) raises the performance of the tool beyond its rated capacity and could cause serious damage to tool and user.

Always use clean dry air. Excessive moisture and dirt will greatly reduce the life of any air motor. We recommend the installation of an in-line filter-regulator-lubricator as close to the tool as possible.

A 3/8" air hose is required up to a length of 8 ft. If more length is required a 1/2" air hose should be used at the compressor. Attach a 3/8" whip hose for the remaining 4 - 8 ft. for flexibility. Be sure all hoses and fittings are the correct size and tightly secured before using air tool.

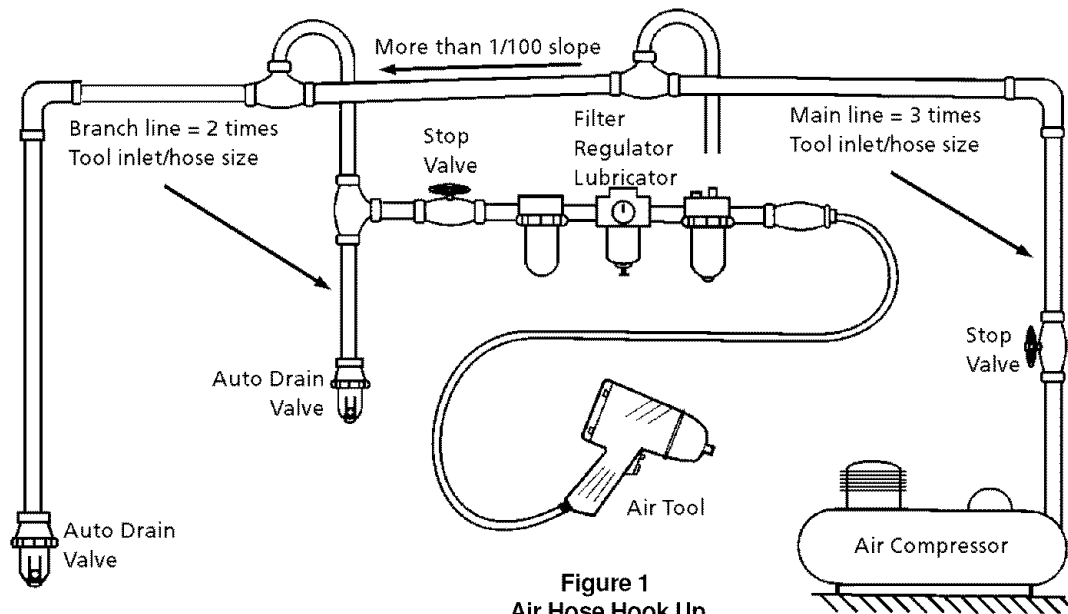


Figure 1
Air Hose Hook Up

OPERATION

Treat your sandblast gun as though it was a loaded pistol NEVER point it at anyone.

Protect yourself. Abrasives will be deflected from the work area. Always use goggles and gloves. Save your lungs. Wear protective mask and work in a well ventilated area.

Protect your children. Keep them away from the blasting area. NEVER allow them to use sandblasting equipment.

Protect other people. Allow no one around unless they are wearing goggles, protective mask, and protective gloves.

Do not work around oily rags or flammable liquids. Sand striking metal could spark and create an explosion.

Make sure air supply is off and lines bled before any service or maintenance.

When sandblasting there will be scattering of sand with considerable force do not blast near automobiles, glass, furniture or other items that can be damaged by this scattering.

Do not spray acids or caustics.

GENERAL BLASTING RULES

The higher the pressure (max. 125PSI), the closer to the work, the quicker the job will be done

Use large grit abrasive to remove material and use small grit to smooth surfaces.

Do not blast near automobiles, glass, furniture, or other items that maybe damaged by over spray of blasting materials

store blasting material in dry area. Used material will have a greater tendency to cake and cause problems

GENERAL BLASTING

Always filter material to remove any caked material. Used material will contain dirt and other matter which has accumulated from previous blasting. This must be removed to prevent clogging of the gun

For small objects use a sandblast booth, if available. If not, a carton cut away can be used as a substitute. This will help prevent scattering of abrasives and will allow abrasives to be trapped for reusing.

Use a compressor that can supply enough air. (See specifications). Too small a compressor will cause air pressure to drop; blaster will not operate satisfactorily

When spraying devices such as carburators stuff rags or paper into the openings to keep from causing internal damage.

As your nozzle wears, adjustments in air pressure and distance from work will have to be changed.

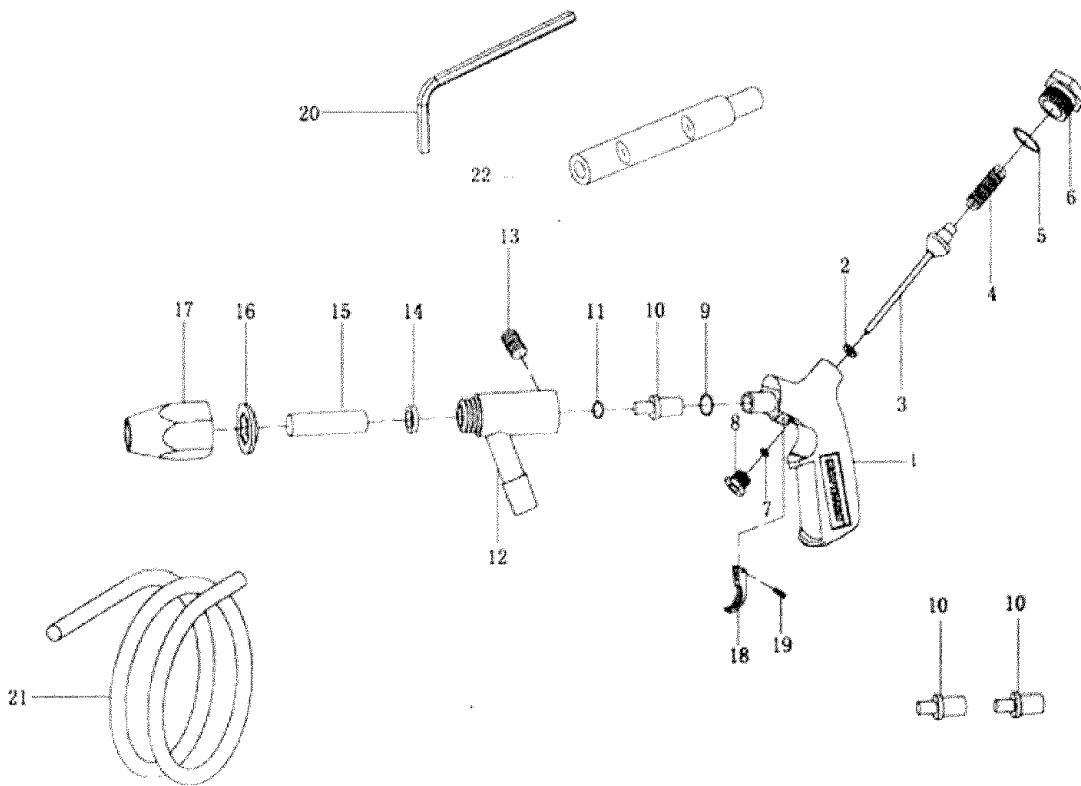
Use the lowest effective pressure on soft wood, etc., to prevent blasting damage, such as pitting the wood.

Whenever the nozzle or jet is removed and replaced. Use a brush to clean the threads on them, as well as the threads in the gun

BLASTING RESULT IS DETERMINED BY MANY FACTORS:

- Size and hardness of blasting abrasives.
- Air volume and pressure.
- Distance from work piece.
- Size of air jet and blasting nozzle. (New)
- Size of air jet and blasting nozzle. (Worn)
- Amount of time a specific area is blasted

**Sears CRAFTSMAN Model 875.167070
SAND BLASTER
Exploded View and Parts List**



Ref.	Part No.	Description	Q'ty	Ref.	Part No.	Description	Q'ty
1	9106731	Gun Body	1	11	9106741	O-Ring	2
2	9106732	Washer	1	12	9106742	Nozzle	1
3	9106733	Needle Valve	1	13	9106743	Screw	1
4	9106734	Spring	1	14	9106744	Washer	1
5	9106735	O-Ring	1	15	9106745	Porcelain Tip	1
6	9106736	Nut	1	16	9106746	Spacer	1
7	9106737	O-Ring	1	17	9106747	Nozzle Head	1
8	9106738	Screw	1	18	9106748	Trigger	1
9	9106739	Washer	1	19	9106749	Trigger Pivot Pin	1
10	9106740A	Fluid Nozzle (1/8")	1	20	9106750	Spanner	1
10	9106740B	Fluid Nozzle (3/32")	1	21	9106751	Black Rubber Tube	1
10	9106740C	Fluid Nozzle (1/8")	1	22	9106752	Steel Tube	1

TROUBLE SHOOTING GUIDE

	CAUSED BY	DUE TO	WHAT TO DO
WON'T SANDBLAST	SLOW OR NO AIR PRESSURE	REGULATOR SET INCORRECTLY, PINCHED HOSE, COMPRESSOR FILTER DIRTY	RESET REGULATOR, STRAIGHTEN HOSE, CLEAN OR REPLACE FILTER
	MATERIAL NOT COMING FROM GUN	MATERIAL TUBE CLOGGED	LOWER PRESSURE BELOW 40 PSI. UNCLOG TUBE BY REMOVING SANDBLASTER FROM MEDIA AND HOLDING A HEAVY CLOTH FIRMLY AGAINST THE NOZZLE AND OPERATING THE GUN
	CLOGGED GUN	DAMP MATERIAL	REPLACE WITH DRY ABRASIVE. DAMP MATERIAL MAYBE DRIED AND USED
GUN WON'T SHUT OFF	TRIGGER STUCK	SAND IN TRIGGER	REMOVE AND CLEAN TRIGGER, REASSEMBLE
		BAD O-RINGS	REMOVE AND REPLACE
SPUTTERING	CLOGGED JET OR NOZZLE	BUILD UP OF ABRASIVE AROUND JET / NOZZLE AREA	REMOVE NOZZLE AND JET CLEAN OUT DIRT. MAKE SURE THREADS ARE CLEAN BEFORE REPLACING
	AIR / ABRASIVE LEAKS AT NOZZLE / JET AREA	NOZZLE OR JET LOOSE	TIGHTEN
	VACUUM LEAK	LOOSE MAT'L TUBE	TIGHTEN