

# GAS FREE-STANDING CONVECTION RANGE

Installation Manual

For Use with Model(s): all gas models

# BOSCH

YOUR LIFE. OUR INSPIRATION.





# Important Safety Instructions

## Table of Contents

Important Safety Instructions .....	1
Preparation .....	3
Installation .....	4
Final Steps .....	5

**Please read all instructions before using this appliance.**

### PARTS PROVIDED:

Anti-Tip Bracket

### TOOLS AND PARTS NEEDED:

- Standard Measuring Tape
- Phillips Head Screwdriver
- 1-1/4" Wrench
- Pencil
- T-20 Torx Screwdriver
- 3/8" Nut Driver
- Screws (2) and Anchors (2) for Anti-tip Bracket (Style will vary depending on mounting surface)
- Pipe Wrench (2)
- Teflon® Tape\* or Pipe Joint Compound (Appropriate for use with LP gas and Natural gas)
- Channel Lock Pliers
- Gas Leak Test Solution
- Level
- Drill and Drill Bit
- Gas Supply Line (Flexible Metal Appliance Connector or Rigid Pipe)
- Gas Shut Off Valve (If not already present)
- Gloves and Safety Goggles

\* Teflon is a registered trademark of DuPont



**WARNING: If the information in this manual is not followed exactly, a fire or explosion may result causing property damage, personal injury or death.**

- **Do not store or use combustible materials, gasoline or other flammable vapors and liquids in the vicinity of this or any other appliance.**
- **WHAT TO DO IF YOU SMELL GAS:**
  - **Do not try to light any appliance.**
  - **Do not touch any electrical switch.**
  - **Do not use any phone in your building.**
  - **Immediately call your gas supplier from a neighbor's phone. Follow the gas supplier's instructions.**
  - **If you cannot reach your gas supplier, call the fire department.**

**Installation and service must be performed by a qualified installer, authorized service agency or the gas supplier.**

- **Remove all tape and packaging before using the range.** Destroy the carton and plastic bags after unpacking the range. Never allow children to play with packaging material.
- **Be sure your appliance is properly installed and grounded by a qualified technician** in accordance with the National Electrical Code ANSI/NFPA No. 7 latest edition and local electrical code requirements.  
Important: Local codes vary. Installation, electrical connections and grounding must comply with all applicable codes.
- **Install only per installation instructions included in the literature package for this range.**
- **Ask your dealer to recommend a qualified technician and an authorized repair service.**
- **Know how to disconnect the power** to the range at the circuit breaker or fuse box in and the gas supply at the shutoff in case of an emergency.
- **Do not repair or replace any part of the appliance unless specifically recommended in the manuals.** All other servicing should be done by a qualified technician. This may reduce the risk of personal injury and damage to the range.
- **When testing the supply piping system at test pressures in excess of 1/2 psig (3.5 kPa), the appliance and its individual shut-off valve must be disconnected from the gas piping system.**
- **When testing the supply piping system at test pressures equal to or less than 1/2 psig (3.5 kPa), the appliance must be isolated from the gas supply piping system by closing its individual manual shut-off valve.**
- **Never modify or alter the construction of a range** by removing leveling legs, panels, wire covers, anti-tip brackets/screws, or any other part of the product.
- **Do not lift door by door handle.** Remove the door for easier handling and installation. See Section 'Removing Oven Door' in Use and Care manual.



## Important Safety Instructions



### WARNING

Before installing, turn power OFF at the service panel. Lock service panel to prevent power from being turned ON accidentally.



### CAUTION

Unit is heavy and requires at least two persons or proper equipment to move.



### WARNING

Stepping, leaning or sitting on the doors or drawers of this range can result in serious injuries and also cause damage to the range. Do not allow children to climb or play around the range. The weight of a child on an open door may cause the range to tip, resulting in serious burns or other injury.



### CAUTION

Do not use the oven or warming drawer (if equipped) for storage.



### WARNING

Do not store items of interest to children in the cabinets above the range or on the backguard of a range. Children climbing on the range to reach items could be seriously injured.

This appliance has been tested in accordance with the following standards:

- ANSI Z21.1, Standard for Household Cooking Appliances (USA)
- CAN 1.1-M81 Interim Reqt # 58 Domestic Cooktops (CANADA)
- CAN/ CSA-C 22.2 No. 61-M89 Household Cooking Ranges

In Canada, installation must be in accordance with CAN 1-B149.1 and .2 Installation Codes for Gas Burning Appliances and/or local codes.

### For Massachusetts Installations:

1. Installation must be performed by a qualified or licensed contractor, plumber or gas fitter qualified or licensed by the state, province or region where this appliance is being installed.
2. Shut-off valve must be a "T" handle gas cock.
3. Flexible gas connector must not be longer than 36 inches.

### High Altitude Installation Note:

This range is CSA certified for safe operation up to an altitude of 10,000 ft. without any modifications.

**Exception:** for use with LP, the range must first be converted using the LP conversion instructions included in this literature package.



### WARNING

#### RANGE TIPPING HAZARD

- All ranges can tip and injury could result. To prevent accidental tipping of the range, attach it to the wall, floor or cabinet by installing the Anti-Tip Device supplied.
- A risk of tip-over may exist if the appliance is not installed in accordance with these instructions.
- If the range is pulled away from the wall for cleaning, service, or any other reason, ensure that the Anti-Tip Device is properly reengaged when the range is pushed back against the wall. In the event of abnormal usage (such as a person standing, sitting, or leaning on an open door), failure to take this precaution could result in tipping of the range. Personal injury might result from spilled hot liquids or from the range itself.

## Steps 1 through 4: Preparation

### 1. Install Ventilation

Bosch strongly recommends the installation of a ventilation hood above this range. For most kitchens a certified hood rating of not less than 300 CFM is recommended. The range hood must be installed according to instructions furnished with the hood.

### 2. Prepare Cabinets

This unit is designed for installation near adjacent walls and projecting surfaces constructed of combustible materials.

Allow a minimum of 30 inches between overhead cabinets where range is to be installed (See Figure 1).

#### Required Clearances\*

##### From cooktop to materials above (See Figure 1)

There must be a minimum clearance of 30 inches between the top of the cooking surface and the bottom of an unprotected wood or metal cabinet.

24 inches is acceptable when the bottom of the wood or metal cabinet is protected by (a) not less than 1/4" of flame retardant material which must be covered with (b) not less than No. 28 MSG sheet metal, 0.015 inch stainless steel or 0.024 inch aluminum or copper.

##### From range walls to adjacent materials (See Figure 1)

No clearance is required from unit walls to adjacent vertical combustible walls on rear, right or left.

Clearance from range top to adjacent vertical walls must be at least 4".

**NOTE:** Some cabinet finishes cannot survive the temperatures allowed by U.L., particularly self-cleaning ovens; the cabinets may discolor or stain. This is most noticeable with laminated cabinets.

### 3. Prepare Gas Supply Line and Electrical Outlet

The gas supply line and electrical outlet must be located in the shaded space in Figure 2.

### 4. Prepare Walls and Floor and Install Anti-Tip Bracket

1. Seal any holes in the walls or floor.
2. Adjust height of range and level by rotating the adjustable leg supports on the bottom of the range, using 1-1/4" wrench.
3. Measure to locate bracket position as shown in Figure 3.
4. Secure bracket with 2 screws adequate for mounting surface, not included. (i.e.; for wood floor use wood screws for concrete floor use concrete anchors and screws).

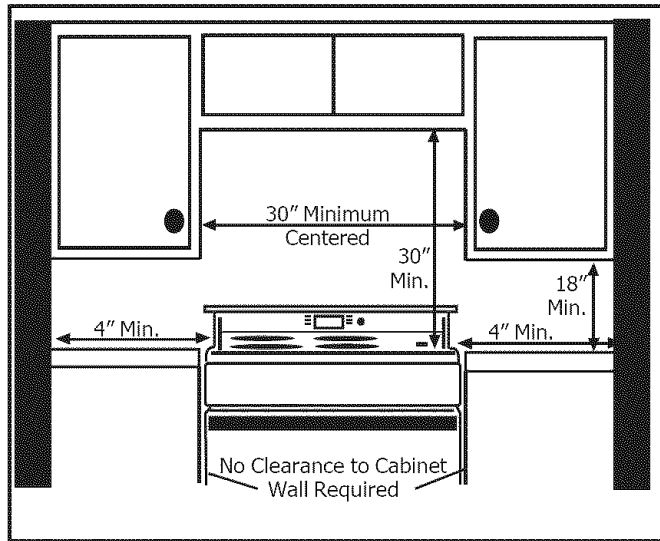


Figure 1: Cabinet Preparation

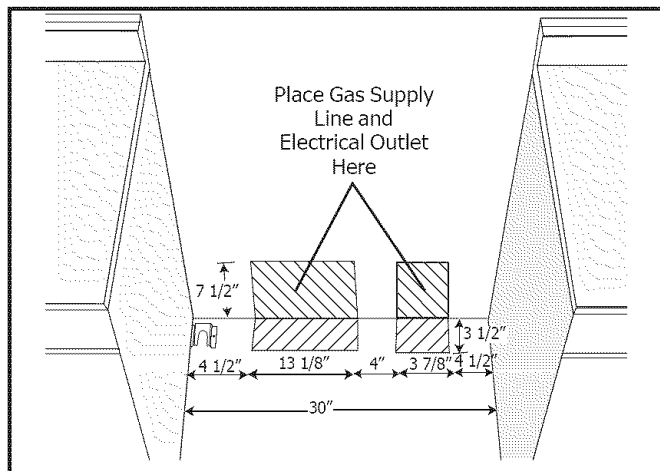


Figure 2: Gas Supply Line and Electrical Outlet Placement

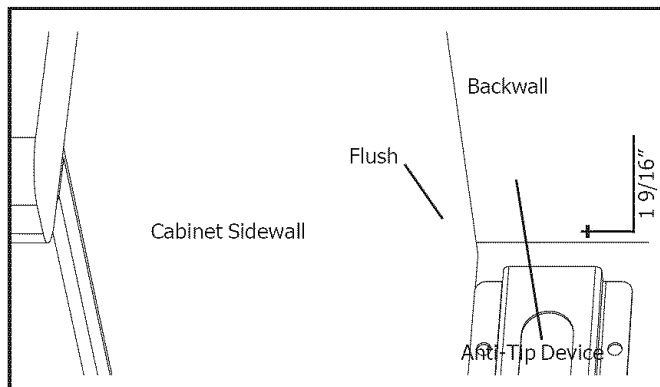


Figure 3

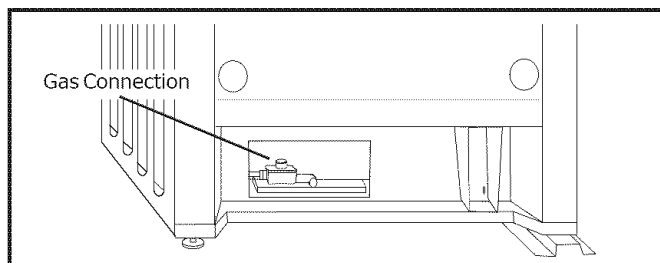


Figure 4

\*Instructions were determined using Standard American cabinets. Standard base cabinets measure 36" high x 24" deep. Cabinets over the cooking surface and cabinets adjacent to those over the cooking surface measure 13 inches deep from backwall. If nonstandard cabinets are used, care should be taken to alter dimensions accordingly.



## Step 5: Installation - Connect Gas Supply

**Important note for LP users:** The range is shipped from the factory for use with natural gas. For use with propane (LP) gas, your range must first be converted using the LP conversion kit.

The gas connection is located below the back panel of the range (See Figure 4, Page 3). It is accessible through the warming drawer access panel or from the back of the range. To reach access panel, remove warming drawer.

Shut off main gas supply valve before disconnecting the old range and leave it off until the new hook-up has been completed. **Don't forget to relight the pilot on other gas appliances when you turn the gas back on.**

The range can be installed using rigid pipe or a CSA International-certified flexible metal appliance connector. If using a flexible connector, always use a new connector.

Apply pipe joint compound or Teflon\* tape appropriate for use with LP gas and Natural gas around all male pipe threads to prevent leaks.

If not already present, install gas shut off valve in an easily accessible location. Make sure all users know where and how to shut off the gas supply to the range.

**Note: The installer should inform the consumer of the location of the gas shut-off valve.**

**Flexible Connector Method** (see Figure 5, this page)

1. Install male 1/2" flare adaptor at the 1/2" NPT internal thread of the range inlet. Use a backup wrench on the elbow fitting to avoid damage.
2. Install male 1/2" or 3/4" flare union adapter on the NPT internal thread of the manual shut-off valve.
3. Connect flexible metal appliance connector.
4. Make sure circuit breaker is off and then plug range cord in to electrical outlet.
5. Push range back into position insuring that range leg slides under the anti-tip bracket. The range will sit 3/4" away from the wall when properly installed.

**Note:** Be careful not to crimp flexible connector!

6. Carefully tip range forward to insure that anti-tip bracket engages and prevents tip-over.

**Rigid Pipe Method** (see Figure 6, this page)

The configuration of the rigid pipe connection will vary depending on the location of the gas pipe stub. Refer to Figure 6 for details.

1. Make sure circuit breaker is off and then plug range cord in to electrical outlet.
2. Push range back into position insuring that range leg slides under the anti-tip bracket. The range will sit 3/4" away from the wall when properly installed.
3. Carefully tip range forward to insure that anti-tip bracket engages and prevents tip-over.
4. Connect pipe to range at union. Access the connection through the access panel behind the warming drawer.

**Note:** Be careful not to apply pressure to warming drawer element during rigid pipe installation.

**Proceed to "Test for Gas Leaks", next column.**

### Test for Gas Leaks

Leak testing is to be conducted by the installer according to the instructions given in this section.

**Turn on Gas.** Apply a non-corrosive leak detection fluid to all joints and fittings in the gas connection between the shut-off valve and the range. Include gas fittings and joints in the range if connections may have been disturbed during installation. **Bubbles appearing around fittings and connections indicate a leak.**

If a leak appears, turn off supply line gas shut-off valve and tighten connections. Retest for leaks by turning on the supply line gas shut-off valve. When leak check is complete (no bubbles appear), test is complete. Wipe off all detection fluid residue. Proceed to Step 6: Final Steps.



### CAUTION

NEVER CHECK FOR LEAKS WITH A FLAME.  
DO NOT CONTINUE TO THE NEXT STEP UNTIL ALL LEAKS ARE ELIMINATED.



### CAUTION

Before you plug in an electrical cord, be sure all controls are in the OFF position.

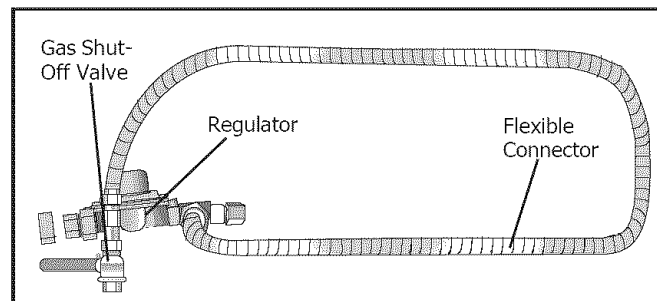


Figure 5: Flexible Connector Method

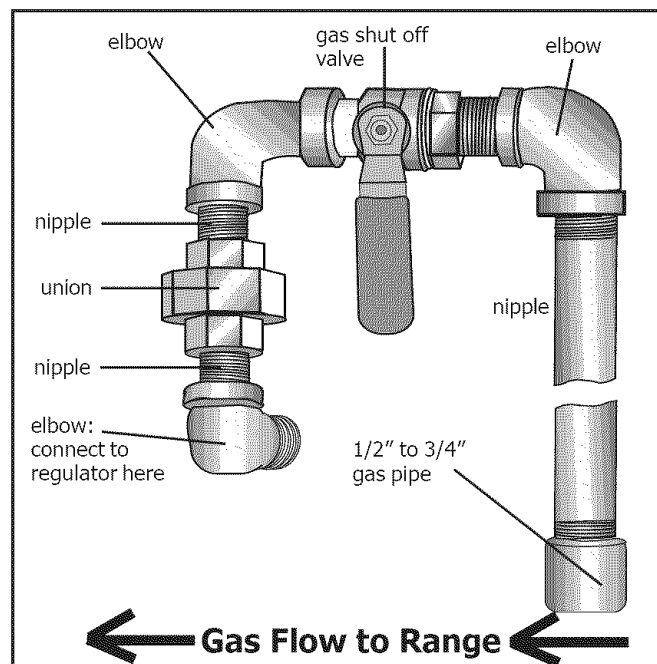


Figure 6: Rigid Pipe Method

## Step 6: Final Steps - Test Burner Function

### 1. Turn on Power at Breaker

If LCD screen flashes and beeps continuously, the wiring is incorrectly installed. Verify that wiring in house is correctly installed. If so, call Bosch Service.

### 2. Test Rangetop Burners

**Test Burner Ignition.** Select a rangetop burner knob. Push down and turn to the flame symbol. The ignitor/spark module will produce a clicking sound. Once the air has been purged from the supply lines, the burner should light within four (4) seconds.

**Test Flame: High Setting.** Turn burner on to HI. See figure 7 for appropriate flame characteristics. If any of the burners continue to burn mostly or completely yellow, call Bosch Service.

**Test Flame: Low Setting.** Turn burner on to LO. Verify that the flame completely surrounds the burner. There should be a flame at each burner port and there should be no air gap between the flame and the burner. If any of the burners do not carry over, call Bosch Service.

Test the ignition and flame of each rangetop burner as described above.

#### WHEN FLAME IS PROPERLY ADJUSTED:

There should be a flame at each rangetop burner port.

There should be no air gap between the flame and the burner port.

### 3. Test Oven Burners

**Remove the oven bottom cover.** Remove the two rear thumb screws, slide cover forward and out.

**Test Bake Burner Ignition.** Set the oven to bake at 350° F. After 30-75 seconds, the burner will ignite. The burner will stay lit until the 350° F is reached and then shut off. From this point forward, the burner will cycle on and off to maintain the temperature.

**Test Bake Burner Flame.** While the burner is lit, inspect the flame. See Figure 6 for proper flame characteristics. If the flame burns completely or mostly yellow, adjust the bake burner air shutter. See Figure 8 (next page) for details.

**Test Broil Burner Ignition.** Set cooking mode to Hi Broil. The burner will ignite after 30-75 seconds.

**Test Broil Burner Flame.** While the burner is lit, inspect the flame. See Figure 6 for proper flame characteristics. If the flame burns completely or mostly yellow, adjust the broil burner air shutter. See Figure 8 (next page) for details.

**Replace oven bottom cover.** Slide cover into place and replace two rear thumb screws.

#### Flame Characteristics

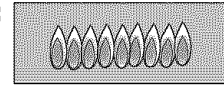
##### Yellow Flames:

Further adjustment is required.



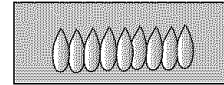
##### Yellow Tips on Outer Cones:

Normal for LP Gas.



##### Soft Blue Flames:

Normal for Natural Gas.



If the flame is completely or mostly yellow, verify that the regulator is set for the correct fuel. After adjustment, retest. Some yellow streaking is normal during the initial start-up. Allow unit to operate 4-5 minutes and re-evaluate before making adjustments.

Figure 7

#### Call Bosch Service at 800-944-2904 if:

1. Any of the burners do not light.
2. The broil burner or bake burner flame goes out before it reaches 350° F.
3. Any of the burners continue to burn yellow.

If flame adjustment is necessary, continue to next page. Otherwise, installation is complete at this point.

## Step 6: Final Steps - Adjust the Flame (if necessary)



**WARNING:**  
Allow Burner(s) to cool before attempting to remove them!

### Adjust Broil Burner Air Shutter (if necessary)

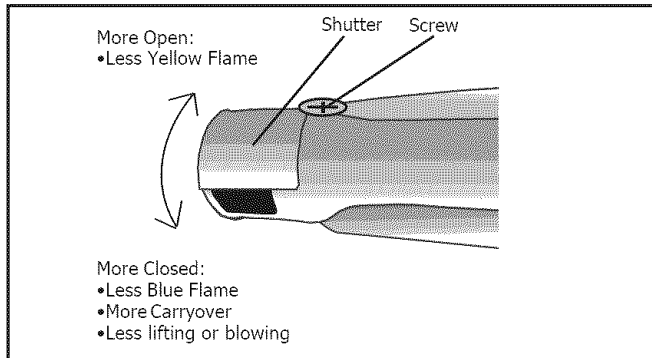


Figure 8

The air shutter is located on the back end of the broil burner. It is attached to the top of the oven cavity with 7 screws. Remove screws and gently pull broil burner assembly straight out being careful not to detach electrical wires. Place broil burner against back wall of oven cavity. Loosen screw and turn shutter. Close the shutter if the flame is lifting or blowing or not carrying over; Open the shutter if it is too yellow (see Figure 8). Tighten screw. Replace broil assembly being careful to feed all wires through the back of the oven. Reinsert all 7 screws.

**Note:** The air shutter on the broil burner fits over the orifice when installed correctly.

**Replacement Parts:** Visit your Bosch dealer for replacement parts. For a dealer near you contact **Bosch Service** at 800-944-2904.

### Adjust Bake Burner Air Shutter (if necessary)

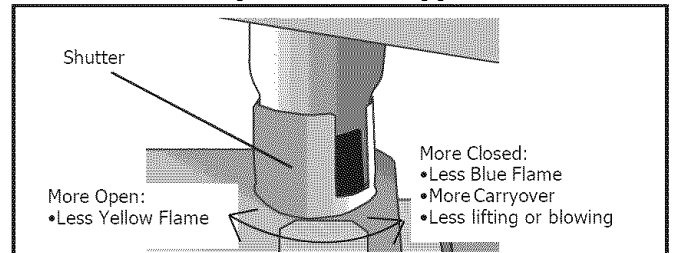


Figure 9

The oven burner air shutter is located near the oven regulator. Reach it through the access hole in the interior back panel of the warming drawer (loosen screws and remove access panel). Loosen screw on shutter. Close the shutter if the flame is lifting or blowing or not carrying over; Open the shutter if it is too yellow. Tighten screw. Reattach cover plate and replace warming drawer (see Figure 9).

BSH reserves the right to change specifications or design without notice. Some models are certified for use in Canada. BSH is not responsible for products which are transported from the United States for use in Canada. Check with your local Canadian distributor or dealer. BSH Home Appliances Corporation, 5551 McFadden Avenue, Huntington Beach, CA 92649.

For the most up to date critical installation dimensions by fax, use your fax handset and call 702/833-3600. Use code #8030.

# **BOSCH**

5551 McFadden Avenue, Huntington Beach, CA 92649 • 800-944-2904  
5060003409 Rev. B (No ECO) 05/04 • © BSH Home Appliances Corporation 2004 • Litho U. S. A.