

## Owner's Manual



# 48" TOW LAWN FINISHER

Model No. 71-24539



### **CAUTION:**

Before using this product,  
read this manual and follow  
all Safety Rules and  
Operating Instructions.

- Safety
- Assembly
- Operation
- Maintenance
- Parts

### **IMPORTANT - READ THIS FIRST!!!**

For Missing Parts or Assembly Questions

Please Call 1-866-576-8388

Mon.-Fri. 7am - 5pm CST.

FAX 217-728-2032 or email [info@agri-fab.com](mailto:info@agri-fab.com)

Missing parts will be sent UPS in 24 hours directly to your home.

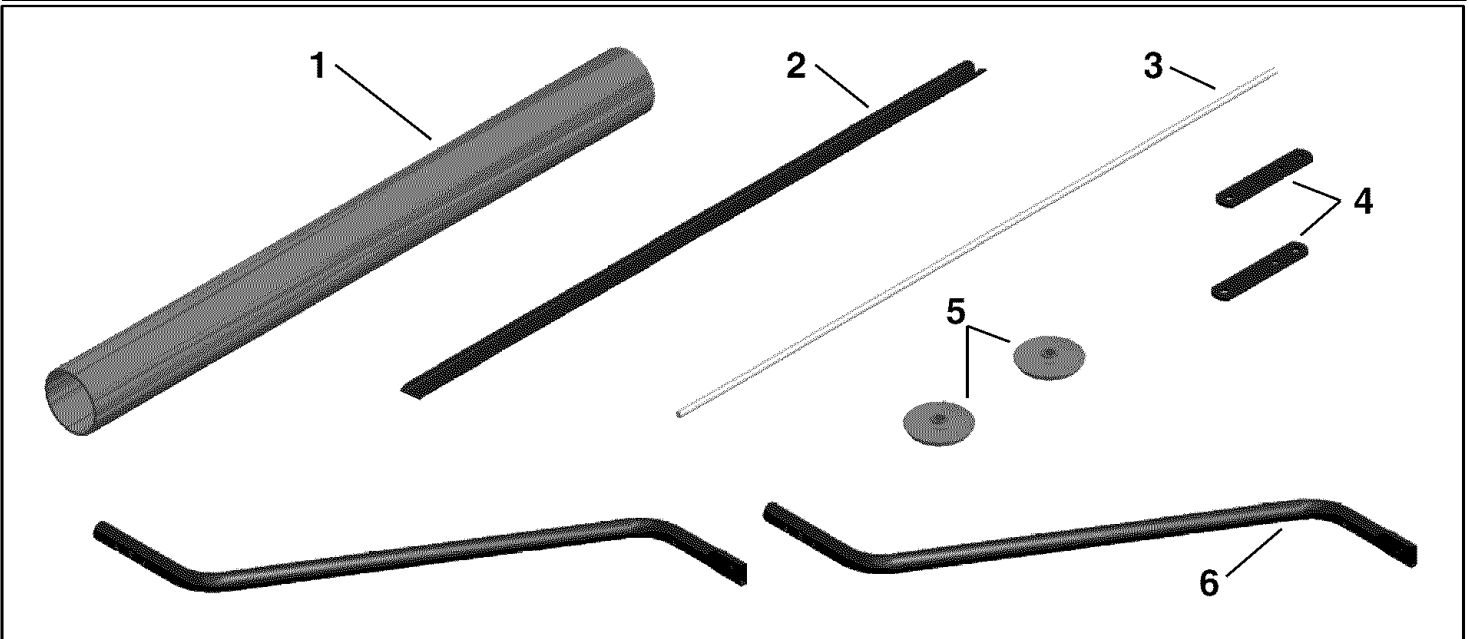
Sears, Roebuck and Co., Hoffman Estates, IL 60179 U.S.A.

[www.sears.com/craftsman](http://www.sears.com/craftsman)

PRINTED IN U.S.A.

FORM NO. 49577 (11/04)

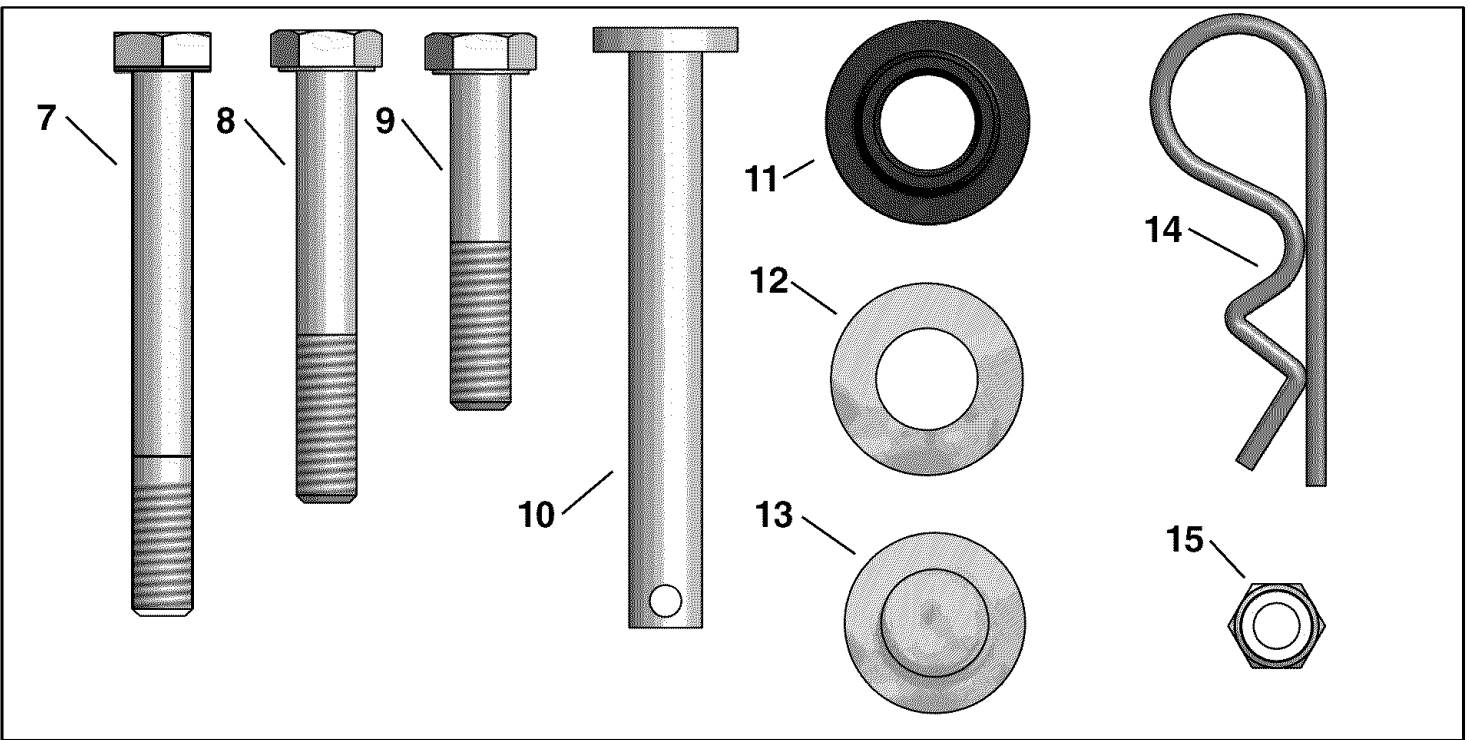
## CARTON CONTENTS



| # | PART # | DESCRIPTION  | QTY |
|---|--------|--------------|-----|
| 1 | 49574  | STRIPER TUBE | 1   |
| 2 | 25505  | SCRAPER BAR  | 1   |
| 3 | 25506  | STRIPER AXLE | 1   |

| # | PART # | DESCRIPTION   | QTY |
|---|--------|---------------|-----|
| 4 | 24192  | HITCH BRACKET | 2   |
| 5 | 49575  | END CAP       | 2   |
| 6 | 49576  | HITCH TUBE    | 2   |

## HARDWARE CONTENTS



| #  | PART # | DESCRIPTION             | QTY |
|----|--------|-------------------------|-----|
| 7  | 44292  | BOLT, HEX 5/16 X 2-1/2" | 2   |
| 8  | 43224  | BOLT, HEX 5/16 X 2-1/4" | 2   |
| 9  | 43084  | BOLT, HEX 5/16 X 1-3/4" | 2   |
| 10 | 47623  | PIN, HITCH              | 1   |
| 11 | 47963  | FLANGE BEARING          | 4   |

| #  | PART #    | DESCRIPTION           | QTY |
|----|-----------|-----------------------|-----|
| 12 | R19171616 | WASHER, 0.53" X 1"    | 4   |
| 13 | 44166     | PALNUT, 1/2"          | 2   |
| 14 | 43343     | HAIRPIN COTTER        | 1   |
| 15 | 47810     | NUT, HEX 5/16" NYLOCK | 6   |

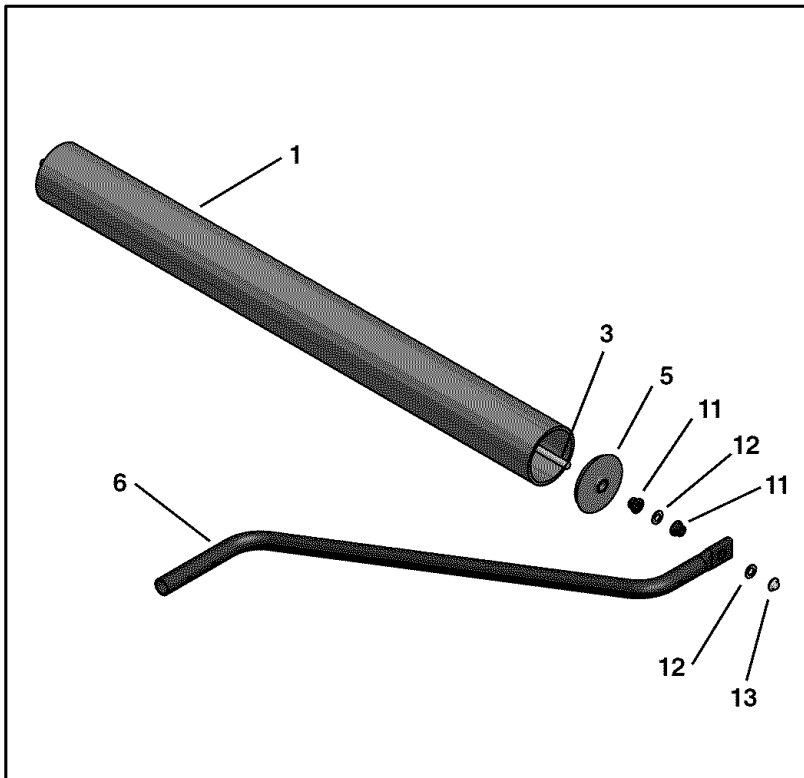


FIGURE 1

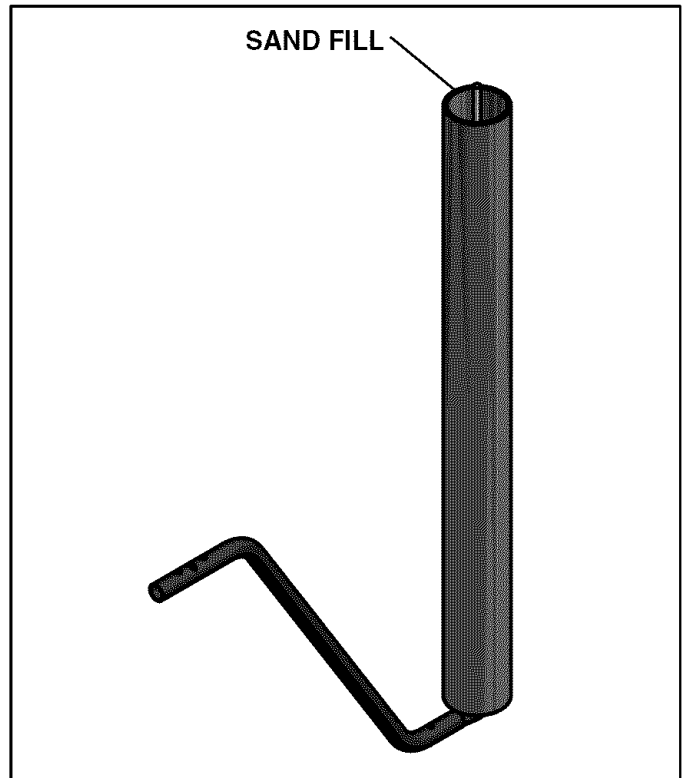


FIGURE 2

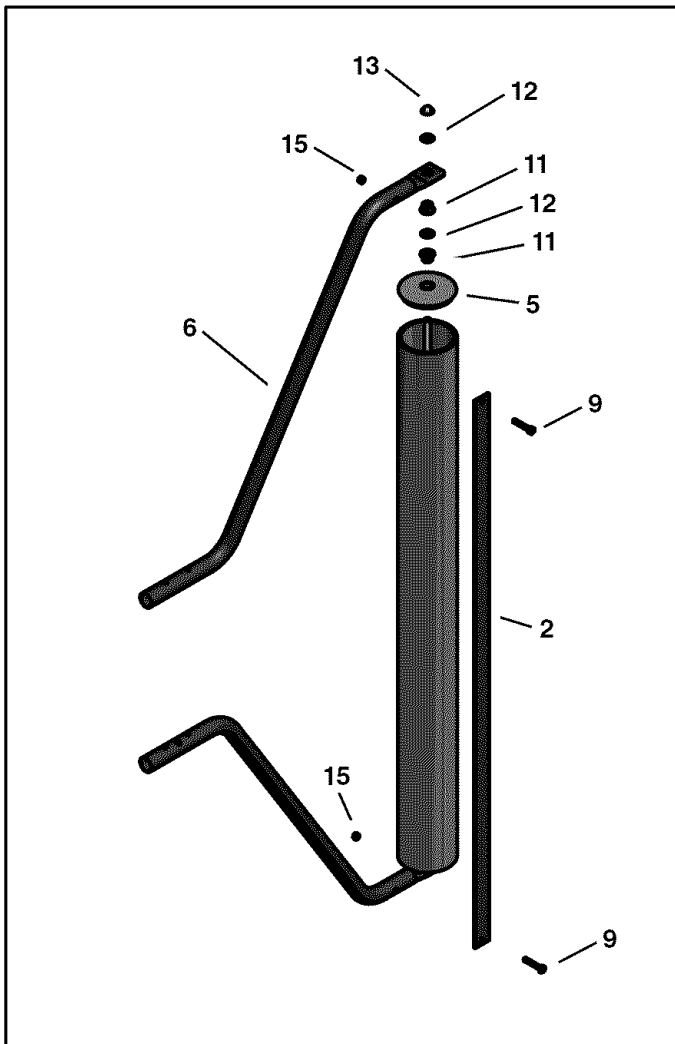


FIGURE 3



FIGURE 4

# ASSEMBLY

## Tools Needed:

- (2) 1/2" Open End Wrench
- (1) Hammer

**\*Refer to Illustrations on page 3.**

### (See Figure 1)

1. Insert one Flange Bearing(11) into the hole in the End Cap(5), and insert End Cap(5) into one end of the Striper Tube(1).
2. Slide the Axle(3) through the Flange Bearing(11) leaving roughly 3" of axle outside the End Cap. Place one Washer(12) over the end of the axle.
3. Insert one Flange Bearing(11) into the hole in the Hitch Tube(6), and slide the Hitch Tube over the axle. Then place one Washer(12) over the axle on the outside of the Hitch Tube.
4. Using a Hammer, tap one 1/2" Palnut(13) over the end of the Axle(3), until it is fully seated.

### (See Figure 2)

5. Place the unit in an upright position and fill the Striper Tube(1) with sand. Leave about 1" of the tube un-filled.

### (See Figure 3)

6. With the unit still standing on end. Insert one Flange Bearing(11) into the hole in the End Cap(5), and insert End Cap(5) over the axle, until it is fully seated in the Striper Tube(1).
7. Place a Washer(12) over the end of the axle.
8. Insert one Flange Bearing(11) into the hole in the Hitch Tube(6) and slide the Hitch Tube over the axle. Then place one Washer(12) over the axle on the outside of the Hitch Tube.
9. Using a Hammer, tap one 1/2" Palnut(13) over the end of the Axle(3), until it is fully seated.
10. Carefully lay the unit down and place the Scraper Bar (2) on top of the Hitch Tubes(6) and secure to each end with one 5/16" x 1-3/4" Hex Bolt(9) and one 5/16" Nylock Nut(15). Make sure both bolts are tight.

### (See Figure 4)

11. Place two 5/16" x 2-1/2" Hex Bolts(7) through the Hitch Tubes, and secure with two 5/16" Nylock Nuts(15).  
DO NOT FULLY TIGHTEN THE NUTS AT THIS TIME.
12. Place two 5/16" x 2-1/4" Hex Bolts(8) through one of the Hitch Brackets(4). From the top, slide the bolts between the two Hitch Tubes, making sure the Bracket Bolts(8) are in between the Tube Bolts(7).
13. Place the other Hitch Bracket(4) on the bottom of the Hitch Tubes and secure with two 5/16" Hex Nuts.  
TIGHTEN ALL BOLTS.

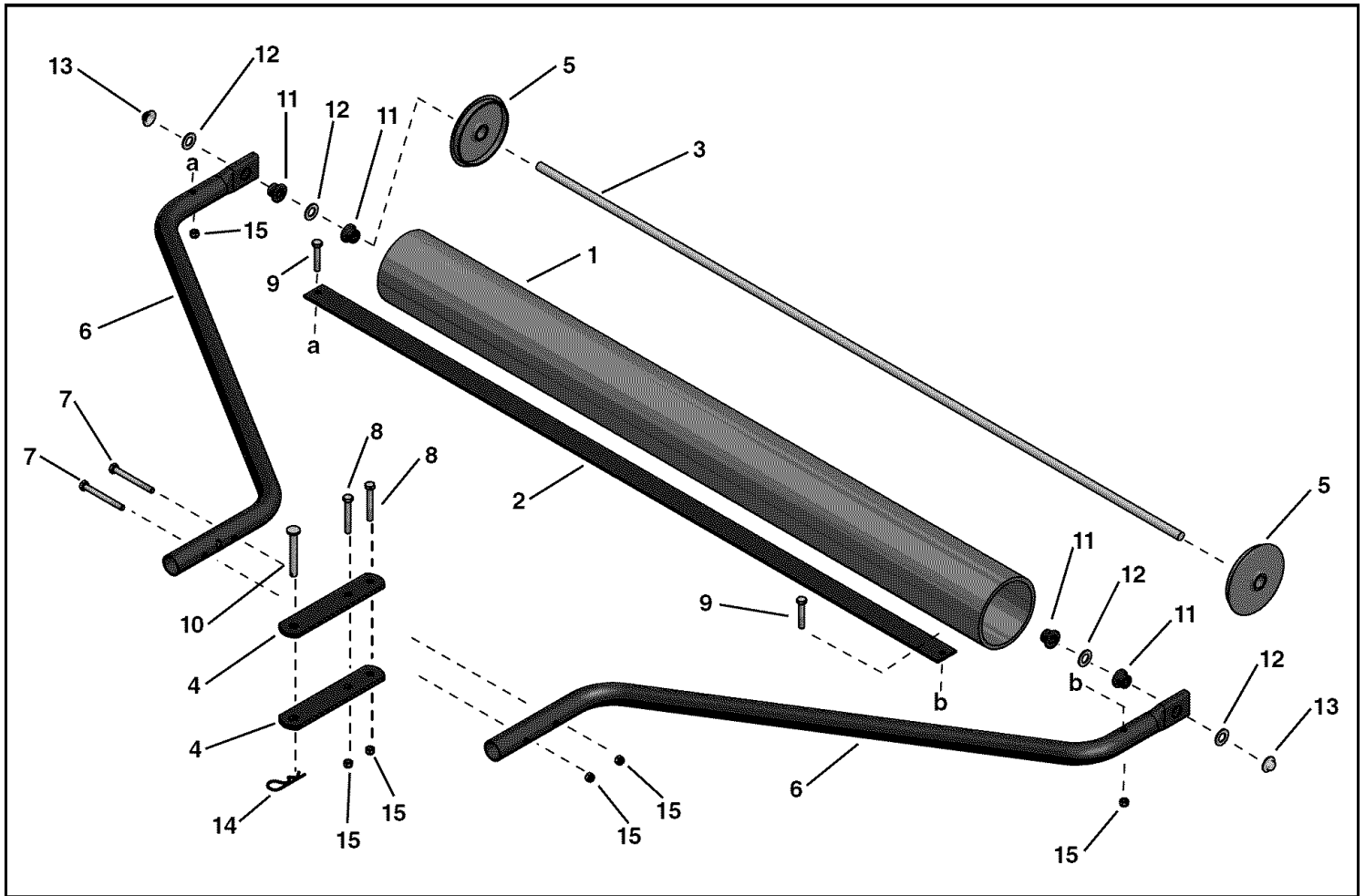
## OPERATION

1. Attach the Lawn Striper behind any Lawn and Garden tractor, with one Hitch Pin(10) and one Hairpin Cotter(14).
2. Tow in a "back and forth" manor across your yard, to create the desired look. This unit can be towed while mowing.

## SPECIFICATIONS

|               |     |
|---------------|-----|
| Roller Length | 48" |
| Roller Dia.   | 4"  |

# PARTS BREAKDOWN



| # | PART # | DESCRIPTION              | QTY |
|---|--------|--------------------------|-----|
| 1 | 49574  | Striper Tube             | 1   |
| 2 | 25505  | Scraper Bar              | 1   |
| 3 | 25506  | Axle                     | 1   |
| 4 | 24192  | Hitch Bracket            | 2   |
| 5 | 49575  | End Cap                  | 2   |
| 6 | 49576  | Hitch Tube               | 2   |
| 7 | 44292  | Bolt, Hex 5/16" x 2-1/2" | 2   |
| 8 | 43224  | Bolt, Hex 5/16" x 2-1/4" | 2   |

| #  | PART #    | DESCRIPTION              | QTY |
|----|-----------|--------------------------|-----|
| 9  | 43084     | Bolt, Hex 5/16" x 1-3/4" | 2   |
| 10 | 47623     | Pin, Hitch               | 1   |
| 11 | 47963     | Flange Bearing           | 4   |
| 12 | R19171616 | Washer, 0.53 x 1"        | 4   |
| 13 | 44166     | 1/2" Palnut              | 2   |
| 14 | 43343     | Pin, Hairpin Cotter      | 1   |
| 15 | 47810     | Nut, Hex 5/16" Nylock    | 6   |

# Get it fixed, at your home or ours!

For repair of major brand appliances **in your own home...**  
no matter who made it, no matter who sold it!

**1-800-4-MY-HOME<sup>SM</sup>** Anytime, day or night  
(1-800-469-4663)

[www.sears.com](http://www.sears.com)

To bring in products such as vacuums, lawn equipment and electronics  
for repair, call for the location of your nearest **Sears Parts & Repair Center.**

**1-800-488-1222** Anytime, day or night

[www.sears.com](http://www.sears.com)

For the replacement parts, accessories and owner's manuals  
that you need to do-it-yourself, call **Sears PartsDirect<sup>SM</sup>!**

**1-800-366-PART** 6 a.m. – 11 p.m. CST,  
(1-800-366-7278) 7 days a week

[www.sears.com/partsdirect](http://www.sears.com/partsdirect)

To purchase or inquire about a Sears Service Agreement:

**1-800-827-6655**

7 a.m. – 5 p.m. CST, Mon. – Sat.

Para pedir servicio de reparación a domicilio,  
y para ordenar piezas con entrega a domicilio:

**1-888-SU-HOGAR<sup>SM</sup>**  
(1-888-784-6427)

Au Canada pour service en français:

**1-877-LE-FOYER<sup>SM</sup>**  
(1-877-533-6937)

