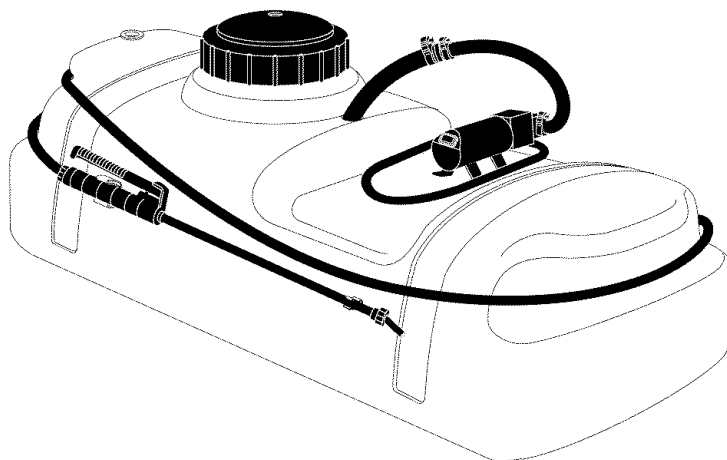


Owner's Manual

CRAFTSMAN®

15 GALLON SKID SPRAYER Model No.486.245341



CAUTION:

Before using this product, read this manual and follow all Safety Rules and Operating Instructions.

- Safety
- Assembly
- Operation
- Maintenance
- Parts

IMPORTANT - READ THIS FIRST!!!

For Missing Parts or Assembly Questions

Please Call 217-728-8388

Mon.-Fri. 7 am - 5 pm CST.

FAX 217-728-2032 or e-mail info@agri-fab.com

Missing parts will be sent UPS in 24 hours directly to your home.

Sears, Roebuck and Co., Hoffman Estates, IL 60179 U.S.A.

www.sears.com/craftsman

PRINTED IN U.S.A.

FORM NO. 48446 (2/02)

TABLE OF CONTENTS

SAFETY RULES	2	STORAGE	5
ASSEMBLY	3	REPAIR PARTS ILLUSTRATION	6
OPERATION	4	REPAIR PARTS LIST	6
MAINTENANCE	5	PARTS ORDERING/SERVICE	Back Page

WARRANTY

LIMITED ONE YEAR WARRANTY ON

For one year from the date of purchase, when this sprayer is maintained and lubricated according to the operating and maintenance instructions in the owner's manual, Sears will repair any defect in material or workmanship free of charge. If this sprayer is used for commercial or rental purposes, this warranty applies for only 90 days from the date of purchase.

This warranty does not cover repairs necessary because of operator negligence or abuse, including the failure to maintain the equipment according to instructions contained in the owner's manual.

WARRANTY SERVICE IS AVAILABLE BY CONTACTING THE NEAREST SEARS SERVICE CENTER/DEPARTMENT IN THE UNITED STATES.

This warranty applies only while this product is in the United States.

This warranty gives you specific legal rights, and you may also have other rights which vary from state to state. Sears, Roebuck and Co. D/817 WA. Hoffman Estates, Chicago, IL 60179

The model number and serial numbers will be found on a decal attached to the sprayer tank.

You should record both the serial number and the date of purchase and keep in a safe place for future reference.

MODEL NUMBER: 486.245341

SERIAL NUMBER: _____

DATE OF PURCHASE: _____



SAFETY



Any power equipment can cause injury if operated improperly or if the user does not understand how to operate the equipment. Exercise caution at all times, when using power equipment.

- Read this owners manual carefully before attempting to assemble or operate this sprayer.
- Read instructions and caution notes for handling and mixing of materials purchased for spraying.
- Wear eye and hand protection and protective clothing when handling and applying lawn chemicals.
- Do not spray on windy days.
- Read chemical labels carefully.



Look for this symbol to point out important safety precautions. It mean--**Attention!! Become alert!! Your safety is involved.**

CONNECTING TO BATTERY

The sprayer is fully assembled at the factory. The only assembly necessary is to hook up the wiring to a **12 volt** power source. The red wire of the two wire set must be connected to the positive post on the battery, or the "HOT" connection on a switch or ammeter. The brown wire may be grounded or connected to the negative battery post.



CAUTION: Never allow negative pin on plug to come in contact with positive "HOT" post on battery. Fire or explosion can result.

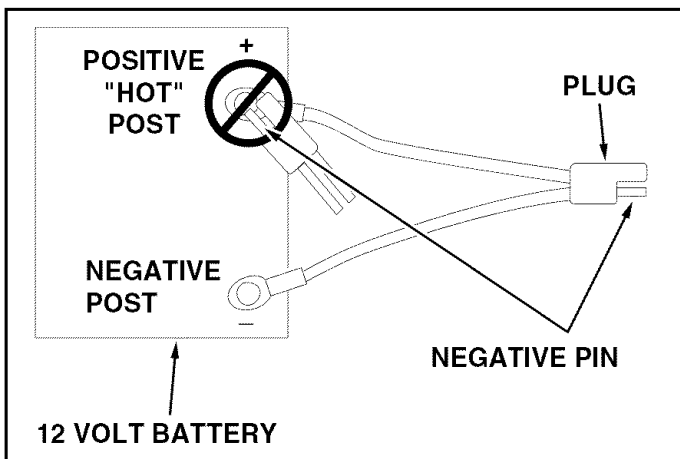


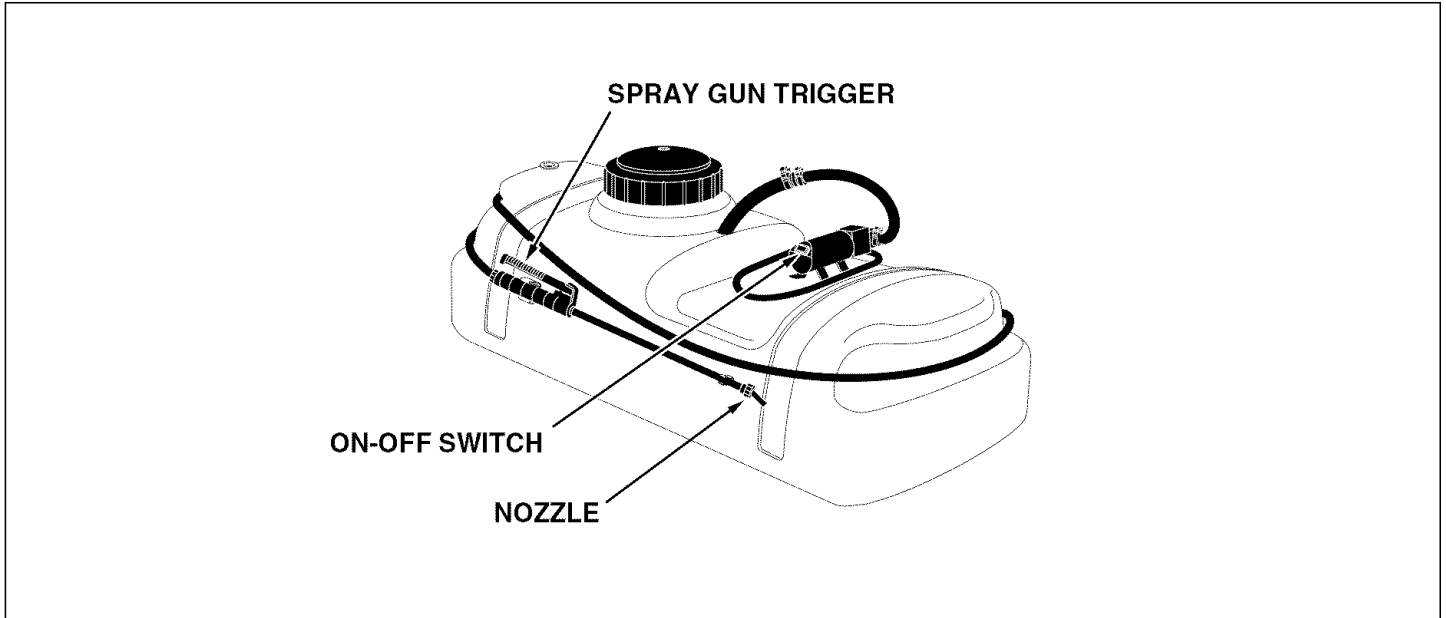
FIGURE 1

OPERATION

KNOW YOUR SPRAYER

Read this owner's manual and safety rules before operating your sprayer.

Compare the illustration below with your sprayer to familiarize yourself with the various controls and their locations.



SPRAY GUN TRIGGER Turns the flow to the nozzle on or off.

NOZZLE Adjusts the spray pattern from a fine mist to a straight stream.

ON-OFF SWITCH Turns the pump motor on or off.

BEFORE STARTING

It is important to test the spray gun with plain water before attempting actual spraying. This will enable you to check the sprayer for leaks and to adjust the spray pattern. If a leak should occur, thread tape may be used to better seal the fitting.

HOW TO START YOUR SPRAYER

- Once the sprayer is connected to a power source flip the sprayer ON-OFF switch on. A pressure switch on the pump will then turn the motor on whenever the system pressure is below 40 psi. The pump will run whenever a pressure drop is caused by squeezing the spray gun trigger.

HOW TO STOP YOUR SPRAYER

- The pump will turn off whenever the spray gun trigger is released and the pressure builds up to 40 psi.
- The pump can also be turned off with the ON-OFF switch located on the pump.

USING YOUR SPRAYER

- The spray gun has an adjustable nozzle which allows the spray pattern to be adjusted from a cone shaped fine mist to a straight stream.
- Do not subject the pump to continuous rapid on and off cycling (one second intervals) for long periods of time. This occurs when the spray gun is adjusted for a very low rate of flow.
- Disconnect the sprayer from the power source or turn the ON-OFF switch off to conserve energy from the battery during periods of idleness. If the resting sprayer is connected and the sprayer switch turned on, the pump will run periodically as the system pressure gradually drops below 40 psi.
- Stay clear of flowers, shrubs and evergreen trees when spraying weed control solutions. Avoid contact of the solution with these sensitive plants.



CAUTION: Wear eye protection, gloves and protective clothing when handling and working with lawn chemicals.

MAINTENANCE

CUSTOMER RESPONSIBILITIES

- Read and follow the maintenance schedule and the maintenance procedures listed in this section.

MAINTENANCE SCHEDULE Fill in dates as you complete regular service.															
	Before each use	After each use	Every season	Before storage	Service Dates										
Check for loose fasteners	X														
Clean the strainer		X													
Clean tank		X													

CHECK FOR LOOSE FASTENERS

- Before each use make a thorough visual check of the sprayer for any bolts and nuts which may have loosened. Retighten any loose bolts and nuts.

CLEANING STRAINER

- Periodically clean the strainer in the end of the intake hose at the bottom of the tank. Remove the nylon swivel nut from the hose, pull out the screen and flush it with clear water.

CLEANING TANK

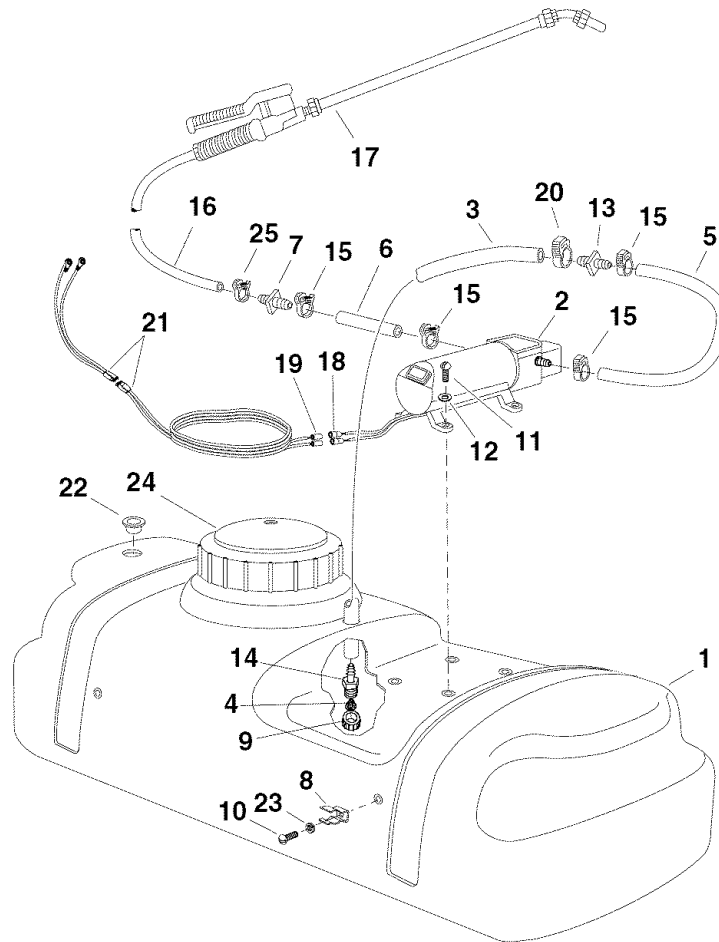
- After each use, fill the tank part way with water, start the sprayer and allow clear water to be pumped through the plumbing system and out through the handgun. Use the handgun to thoroughly wash all internal parts of the tank and the outside of the tank.
- Refill the tank about half full with plain water and a chemical neutralizer and repeat the cleaning instructions above. Flush the entire sprayer with the neutralizing agent. Follow the chemical manufacturers instructions for disposal of all wash or rinsing water.

STORAGE

- Drain all water out of the sprayer, paying special attention to the pump and handgun. These items are especially prone to damage from chemicals and freezing weather.
- The sprayer should be winterized before storage by pumping a 50-50 solution of water and R. V. anti-freeze through the entire plumbing. Proper care and maintenance will prolong the life of the sprayer.

PARTS

REPAIR PARTS FOR 15 GALLON SKID SPRAYER MODEL 486.245341



Ref. No.	Part No.	Qty.	Description	Ref. No.	Part No.	Qty.	Description
1	47752	1	Tank, 15 Gallon	14	46276	1	Adapter, 3/4" GH x 1/2" Barb
2	48297	1	Pump and Motor	15	45026	4	Hose Clamp, 3/8"
3	45022	1	Hose, 1/2" ID (14" Lg.)	16	47393	1	Hose, 1/4" ID (15' Lg.)
4	45024	1	Cap Strainer	17	47406	1	Spray Gun
5	47002	1	Hose, 3/8" ID (10" Lg.)	18	45085	2	Terminal, Female
6	47879	1	Hose, 3/8" ID (4" Lg.)	19	45086	2	Terminal, Male
7	47880	1	Hose Reducer, 3/8" x 1/4"	20	45025	1	Hose Clamp, 1/2"
8	45180	1	Hose Clip	21	46073	1	Connector with Wire
9	45032	1	Swivel Nut, 3/4" Garden Hose	22	46287	1	Plug
10	45040	1	Screw, 10-24 x 1/2" Lg.	23	736-0722	1	Lock Washer, 3/16"
11	47078	4	Screw, 10-24 x 3/4" Lg.	24	46700	1	Lid, Tank
12	43910	4	Flat Washer, #10	25	47405	1	Hose Clamp, 1/4"
13	47005	1	Hose Reducer, 1/2" x 3/8"		48446	1	Owner's Manual

Get it fixed, at your home or ours!

For repair of major brand appliances **in your own home...**
no matter who made it, no matter who sold it!

1-800-4-MY-HOMESM Anytime, day or night
(1-800-469-4663)

www.sears.com

To bring in products such as vacuums, lawn equipment and electronics
for repair, call for the location of your nearest **Sears Parts & Repair Center.**

1-800-488-1222 Anytime, day or night

www.sears.com

For the replacement parts, accessories and owner's manuals
that you need to do-it-yourself, call **Sears PartsDirectSM**!

1-800-366-PART 6 a.m. – 11 p.m. CST,
(1-800-366-7278) 7 days a week

www.sears.com/partsdirect

To purchase or inquire about a Sears Service Agreement:

1-800-827-6655

7 a.m. – 5 p.m. CST, Mon. – Sat.

Para pedir servicio de reparación a domicilio,
y para ordenar piezas con entrega a domicilio:

1-888-SU-HOGARSM
(1-888-784-6427)

Au Canada pour service en français:

1-877-LE-FOYERSM
(1-877-533-6937)

SEARS
HomeCentralSM