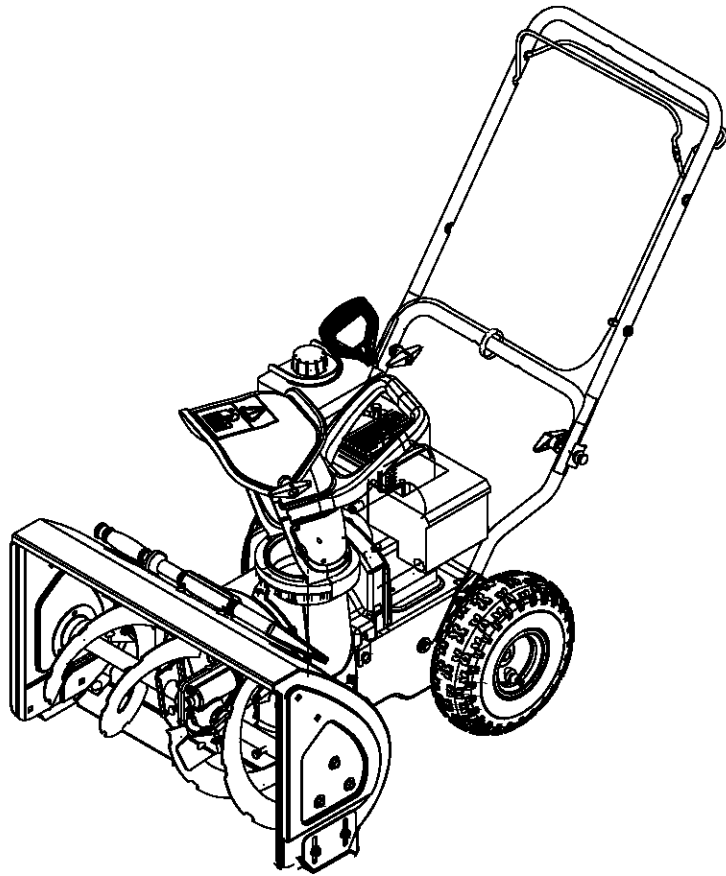


OPERATOR'S MANUAL



Single-Stage Snow Thrower

| | |
|---------------|-------------|
| Models | 140 |
| | 150 |
| | E150 |
| | E162 |
| | E172 |

IMPORTANT: Read safety rules and instructions carefully before operating equipment.

Warning: This unit is equipped with an internal combustion engine and should not be used on or near any unimproved forest-covered, brush-covered or grass-covered land unless the engine's exhaust system is equipped with a spark arrester meeting applicable local or state laws (if any). If a spark arrester is used, it should be maintained in effective working order by the operator. In the State of California the above is required by law (Section 4442 of the California Public Resources Code). Other states may have similar laws. Federal laws apply on federal lands. A spark arrester for the muffler is available through your nearest engine authorized service dealer or contact the service department,

MTD LLC, P.O. BOX 361131 CLEVELAND, OHIO 44136-0019

PRINTED IN U.S.A.
ECO No.

FORM NO. 770-10000F
(10/2003)

TABLE OF CONTENTS

| Content | Page |
|--|------|
| Important Safe Operation Practices | 3 |
| Assembling Your Snow Thrower | 5 |
| Know Your Snow Thrower..... | 7 |
| Operating Your Snow Thrower..... | 8 |
| Making Adjustments..... | 9 |
| Maintaining Your Snow Thrower | 10 |
| Off-Season Storage | 11 |
| Troubleshooting | 11 |
| Accessories & Kits | 12 |
| Parts List..... | 14 |

FINDING MODEL NUMBER

This Operator's Manual is an important part of your new snow thrower. It will help you to assemble, prepare and maintain the unit for best performance. Please read and understand what it says.



Before you start assembling your new snow thrower, please locate the model plate on the equipment and copy the information from it in the space provided below. The information on the model plate is very important if you need help from our Customer Support Department or an authorized dealer.

- You can locate the model number by standing behind the unit in the operating position and looking down at the dash panel. A sample model plate is explained below. For future reference, please copy the model number and the serial number of the equipment in the space below.



Copy the model number here: _____

Copy the serial number here: _____

ENGINE INFORMATION

The engine manufacturer is responsible for all engine-related issues with regards to performance, power-rating, specifications, warranty and service. Please refer to the engine manufacturer's Owner's/Operator's Manual packed separately with your unit for more information.

CALLING CUSTOMER SUPPORT

Please do NOT return the unit to the retailer from which it was purchased, without first contacting Customer Support.

Should you have difficulty assembling this product or have any questions regarding the controls, operation or maintenance of this unit, please call the Customer Support Department.



Call **1- (330) 220-4MTD (4683)** or **1- (800) 800-7310** to reach a Customer Support representative. Please have your unit's model number and serial number ready when you call. See previous section to locate this information. You will be asked to enter the serial number in order to process your call .

For more details about your machine, visit our website at www.mtdproducts.com

SECTION 1: IMPORTANT SAFE OPERATION PRACTICES



WARNING: This symbol points out important safety instructions which, if not followed, could endanger the personal safety and/or property of yourself and others. Read and follow all instructions in this manual before attempting to operate this machine. Failure to comply with these instructions may result in personal injury. When you see this symbol—**heed its warning.**



WARNING: Engine Exhaust, some of its constituents, and certain vehicle components contain or emit chemicals known to State of California to cause cancer and birth defects or other reproductive harm.



DANGER: This machine was built to be operated according to the rules for safe operation in this manual. As with any type of power equipment, carelessness or error on the part of the operator can result in serious injury. This machine is capable of amputating hands and feet and throwing objects. Failure to observe the following safety instructions could result in serious injury or death.

Training

1. Read, understand, and follow all instructions on the machine and in the manual(s) before attempting to assemble and operate. Keep this manual in a safe place for future and regular reference and for ordering replacement parts.
2. Be familiar with all controls and their proper operation. Know how to stop the machine and disengage them quickly.
3. Never allow children under 14 years old to operate this machine. Children 14 years old and over should read and understand the operation instructions and safety rules in this manual and should be trained and supervised by a parent.
4. Never allow adults to operate this machine without proper instruction.
5. Thrown objects can cause serious personal injury. Plan your snow throwing pattern to avoid discharge of material toward roads, bystanders and the like.
6. Keep bystanders, helpers, pets and children at least 75 feet from the machine while it is in operation. Stop machine if anyone enters the area.
7. Exercise caution to avoid slipping or falling, especially when operating in reverse.
8. Let engine and machine adjust to outdoor temperature before starting to clear snow.
9. To avoid personal injury or property damage use extreme care in handling gasoline. Gasoline is extremely flammable and the vapors are explosive. Serious personal injury can occur when gasoline is spilled on yourself or your clothes which can ignite. Wash your skin and change clothes immediately.
 - a. Use only an approved gasoline container.
 - b. Extinguish all cigarettes, cigars, pipes and other sources of ignition.
 - c. Never fuel machine indoors.
 - d. Never remove gas cap or add fuel while the engine is hot or running.
 - e. Allow engine to cool at least two minutes before refueling.
 - f. Never over fill fuel tank. Fill tank to no more than ½ inch below bottom of filler neck to provide space for fuel expansion.
 - g. Replace gasoline cap and tighten securely.
 - h. If gasoline is spilled, wipe it off the engine and equipment. Move machine to another area. Wait 5 minutes before starting the engine.
 - i. Never store the machine or fuel container inside where there is an open flame, spark or pilot light (e.g. furnace, water heater, space heater, clothes dryer etc.).
 - j. Allow machine to cool at least 5 minutes before storing.

Preparation

1. Thoroughly inspect the area where the equipment is to be used. Remove all door mats, newspapers, sleds, boards, wires and other foreign objects which could be tripped over or thrown by the auger/impeller.
2. Always wear safety glasses or eye shields during operation and while performing an adjustment or repair to protect your eyes. Thrown objects which ricochet can cause serious injury to the eyes.
3. Do not operate without wearing adequate winter outer garments. Do not wear jewelry, long scarves or other loose clothing which could become entangled in moving parts. Wear footwear which will improve footing on slippery surfaces.
4. Use a grounded three wire extension cord and receptacle for all units with electric start engines.
5. Adjust collector housing height to clear gravel or crushed rock surfaces.
6. Disengage all clutch levers before starting the engine.
7. Never attempt to make any adjustments while engine is running, except where specifically recommended in the operator's manual.

Operation

1. Do not put hands or feet near rotating parts, in the auger/impeller housing or discharge chute. Contact with the rotating parts can amputate hands and feet.
2. The auger/impeller clutch lever is a safety device. Never bypass its operation. Doing so, makes the machine unsafe and may cause personal injury.
3. The clutch levers must operate easily in both directions and automatically return to the disengaged position when released.
4. Never operate with a missing or damaged discharge chute. Keep all safety devices in place and working.
5. Never run an engine indoors or in a poorly ventilated area. Engine exhaust contains carbon monoxide, an odorless and deadly gas.
6. Do not operate machine while under the influence of alcohol or drugs.

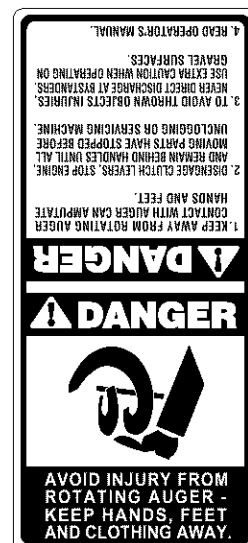
7. Muffler and engine become hot and can cause a burn. Do not touch.
8. Exercise extreme caution when operating on or crossing gravel surfaces. Stay alert for hidden hazards or traffic.
9. Exercise caution when changing direction and while operating on slopes.
10. Plan your snow throwing pattern to avoid discharge towards windows, walls, cars etc. To avoid property damage or personal injury caused by a ricochet.
11. Never direct discharge at children, bystanders and pets or allow anyone in front of the machine.
12. Do not overload machine capacity by attempting to clear snow at too fast of a rate.
13. Never operate this machine without good visibility or light. Always be sure of your footing and keep a firm hold on the handles. Walk, never run.
14. Disengage power to the auger/impeller when transporting or not in use.
15. Never operate machine at high transport speeds on slippery surfaces. Look down and behind and use care when in reverse.
16. If the machine should start to vibrate abnormally, stop the engine, disconnect the spark plug and ground it against the engine. Inspect thoroughly for damage. Repair any damage before starting and operating.
17. Disengage all clutch levers and stop engine before you leave the operating position (behind the handles). Wait until the auger/impeller comes to a complete stop before unclogging the discharge chute, making any adjustments, or inspections.
18. Never put your hand in the discharge or collector openings. Always use a clearing tool to unclog the discharge opening.
19. Use only attachments and accessories approved by the manufacturer (e.g. wheel weights, tire chains, cabs etc.).
20. If situations occur which are not covered in this manual, use care and good judgment. Contact your dealer or telephone 1-800-800-7310 for assistance and the name of your nearest servicing dealer.

Maintenance And Storage

1. Never tamper with safety devices. Check their proper operation regularly.
2. Disengage all clutch levers and stop engine. Wait until the auger/impeller come to a complete stop. Disconnect the spark plug wire and ground against the engine to prevent unintended starting before cleaning, repairing, or inspecting.
3. Check bolts, and screws for proper tightness at frequent intervals to keep the machine in safe working condition. Also, visually inspect machine for any damage.
4. Do not change the engine governor setting or over-speed the engine. The governor controls the maximum safe operating speed of the engine.
5. Snow thrower shave plates and skid shoes are subject to wear and damage. For your safety protection, frequently check all components and replace with original equipment manufacturer's (O.E.M.) parts only. "Use of parts which do not meet the original equipment specifications may lead to improper performance and compromise safety!"
6. Check clutch controls periodically to verify they engage and disengage properly and adjust, if necessary. Refer to the adjustment section in this operator's manual for instructions.
7. Maintain or replace safety and instruction labels, as necessary.
8. Observe proper disposal laws and regulations for gas, oil, etc. to protect the environment.
9. Prior to storing, run machine a few minutes to clear snow from machine and prevent freeze up of auger/impeller.
10. Never store the machine or fuel container inside where there is an open flame, spark or pilot light such as a water heater, furnace, clothes dryer etc.
11. Always refer to the operator's manual for proper instructions on off-season storage.

Your Responsibility:

- Restrict the use of this power machine to persons who read, understand and follow the warnings and instructions in this manual and on the machine.



SECTION 2: ASSEMBLING YOUR SNOW THROWER

NOTE: This Operator's Manual covers several models. **Snow thrower features vary by model.** Not all features discussed in this manual are applicable to all snow thrower models.

Contents of Carton

Before beginning installation, remove all parts from the carton and compare them to Figure 1. Carton contents are listed below with part numbers in parentheses.

- Two Ignition Keys (725-0201, 725-1341B†)
 - † An ignition key with a plastic cover is included with select models only. Two standard ignition keys are included with all other models.

On Models So Equipped:

- Extended Chute Directional Control Assembly (747-0737, 720-0201A & 726-0100)
- One Cotter Pin (714-0507)
- One Saddle Washer (736-0415)
- Two Hex Nuts (712-3010)
- One Eye Bolt (747-0697) w/ Grommet (735-0234)

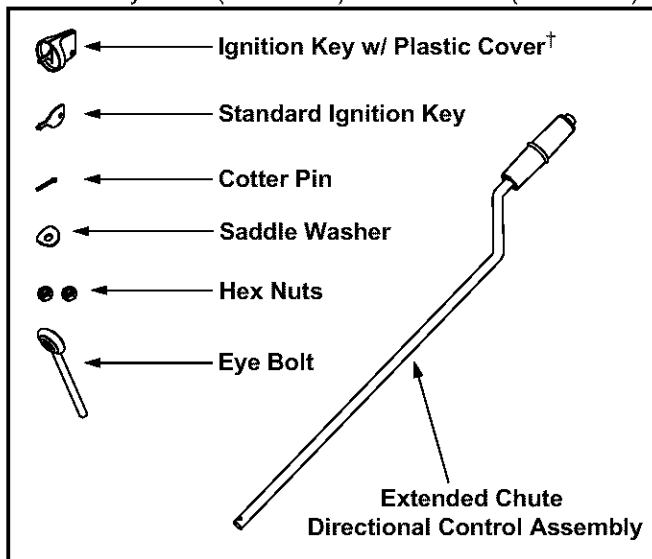


Figure 1

NOTE: All references to left or right side of the snow thrower is from the operating position only.



WARNING: Disconnect the spark plug wire and ground it against the engine to prevent unintended starting.

Positioning the Upper Handle

- Remove packing material, if present, and loosen the wing knobs found on each side of the handle.
- Making sure not to pinch or crimp the cable in the process, pivot the upper handle into the operating position as illustrated in Figure 2 until it clicks into place.

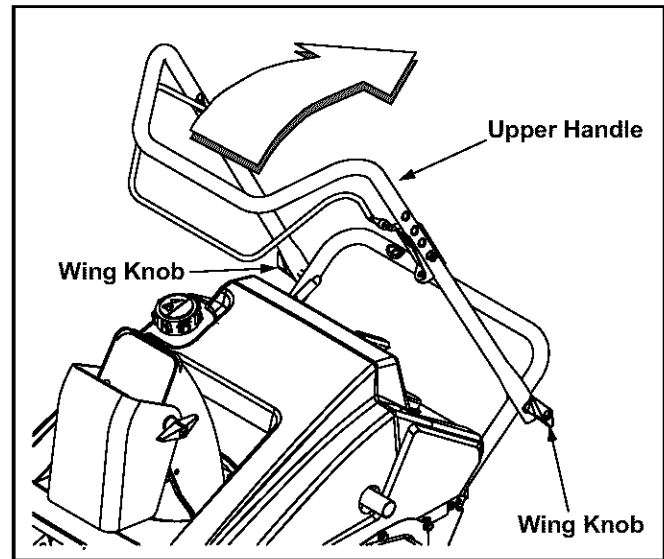


Figure 2

- Tighten the wing knobs to secure the handle in place.

Attaching the Control Cable

The control cable may already be attached to the control handle. If it's not, complete the following steps to attach it to the snow thrower housing.

- Route the control cable **over** the crossbar where the lower handle meets the upper handle.
- Pivot the control handle forward and insert the end of the control cable into the **bottom** hole in the control handle, from the outside to the inside, as shown in Figure 3.

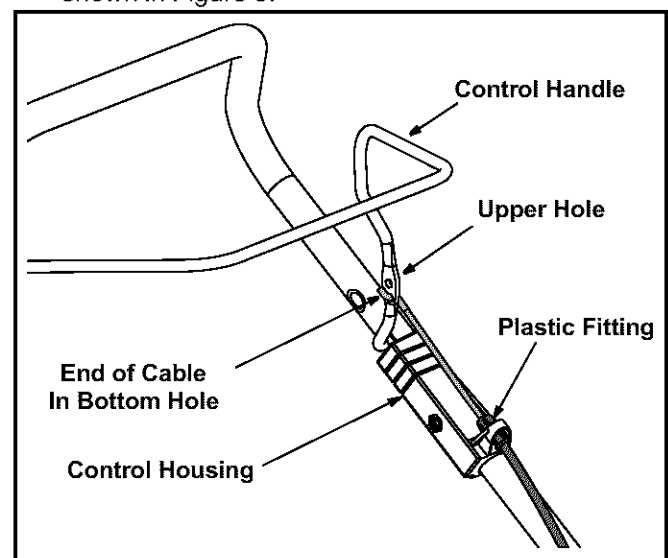


Figure 3

- Push the plastic fitting into the control housing until it clicks in place

NOTE: The upper hole in the control handle provides for adjustment in belt and cable tension. Refer to page 9 of this manual for instructions.

Installing the Chute Directional Control's Eye Bolt (on models so equipped)

To install the upper crank of the chute directional control, proceed as follows:

- Thread one of the hex nuts (they are interchangeable) included in the snow thrower's hardware pack all the way onto the eye bolt.
- Insert the eye bolt into the hole found in the lower handle's crossbar. See Figure 4.
- Fasten the eye bolt to the crossbar with the saddle washer (cupped side UP) and the other hex nut as illustrated in Figure 4. Do NOT tighten at this time.

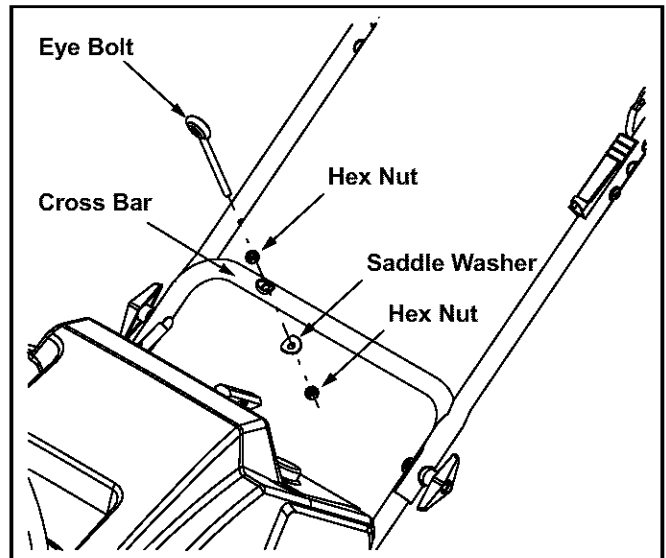


Figure 4

Installing the Extended Chute Directional Control (on models so equipped)

- Insert the chute directional control through the eyebolt and into the coupler found in the top right area of the snow thrower's shroud. See Figure 5.
- Rotate the chute directional control to align the hole in the coupler with the hole in the chute directional control, and insert the cotter pin through both holes. Bend the ends of cotter pin in opposite directions to secure it in place. See Figure 5.
- Thread the eye bolt's lower hex nut upward or downward to adjust the height of the eye bolt so that the chute directional control does not bind in the coupler when operated.
- Finish by threading the upper hex nut downward against the crossbar and tightening securely.

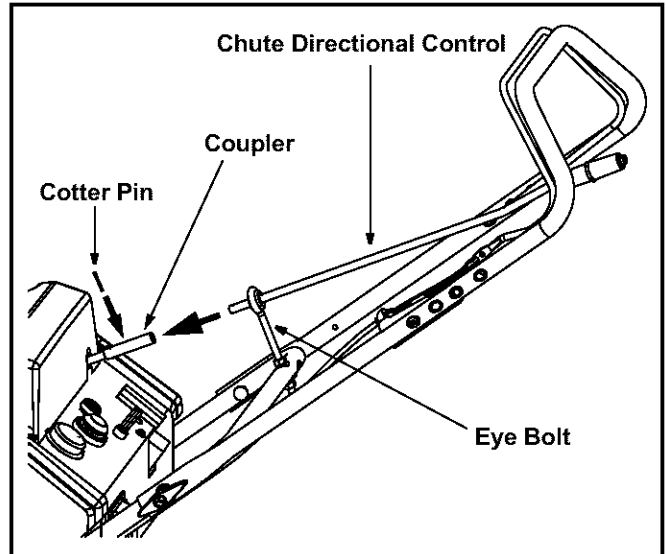


Figure 5

Assembling the Discharge Chute

For shipping reasons, the snow thrower has been packaged with the upper chute pivoted all the way down. To pivot it upward, proceed as follows:

- Turn the chute directional control until the chute opening is facing straight ahead.
- Remove the wing knob, flat washer and carriage bolt from the upper chute. See Figure 6.
- Pivot the upper chute upward **over the lip on the lower chute** so that there is **NO** gap between the upper chute and the lower chute. See Figure 6.
- Resecure with the hardware just removed.

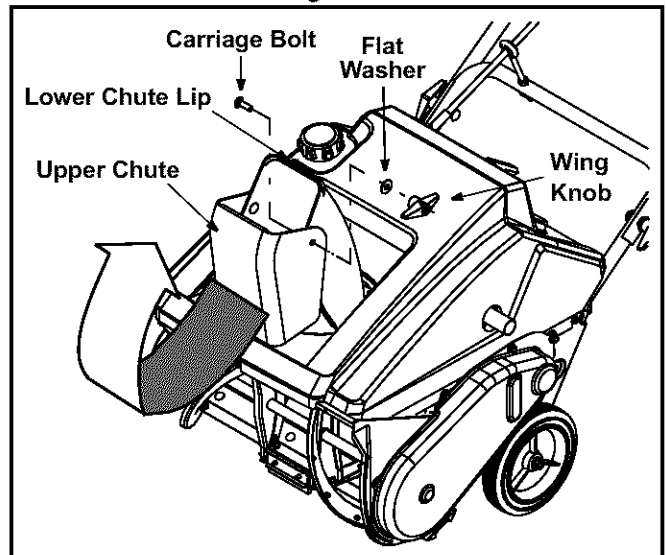
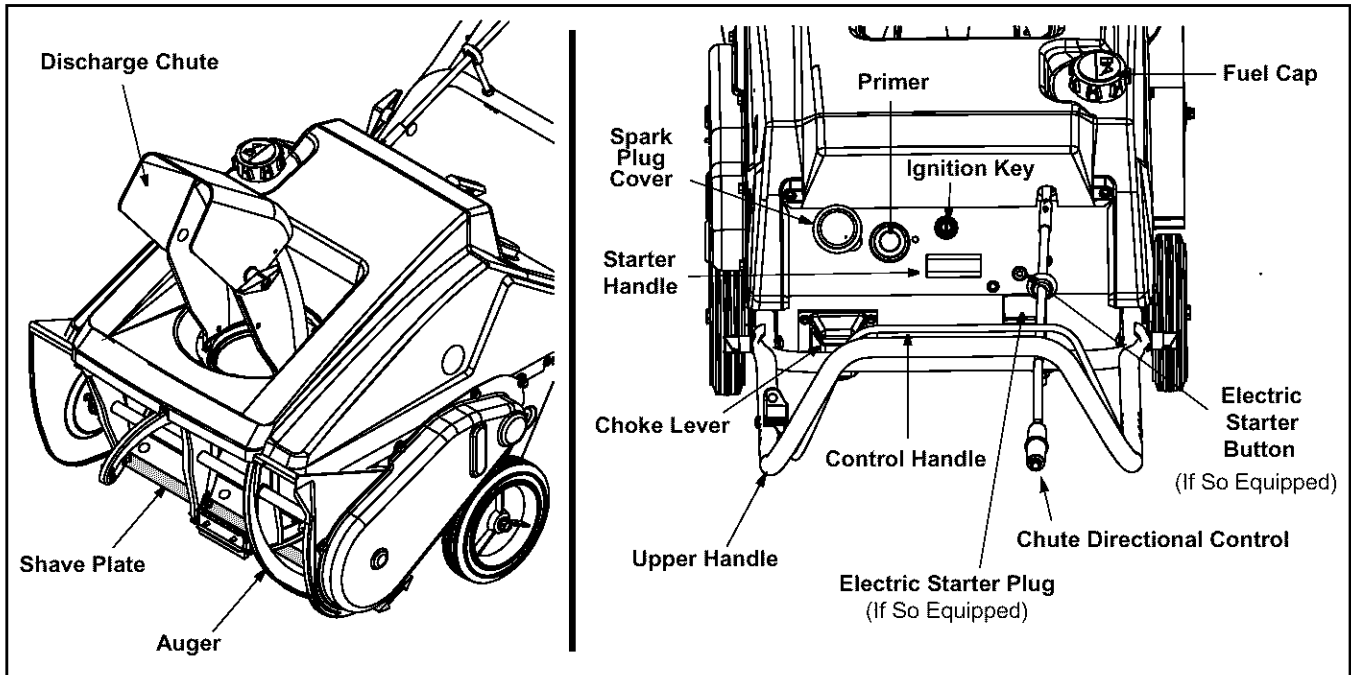


Figure 6

SECTION 3: KNOW YOUR SNOW THROWER



IMPORTANT: This unit runs on a **mixture of gasoline and oil**. Do NOT operate the snow thrower without first reading the *Tecumseh Engines* operator's manual for instructions regarding proper fuel and engine oil.

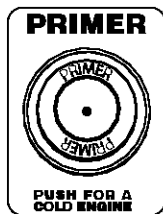
Choke Lever



Activating the choke control closes the choke plate on the carburetor and aids in starting the engine. Refer to the engine manual packed with the snow thrower for more detailed instructions regarding the choke.

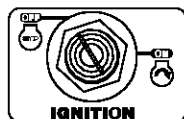
Primer

Depressing the primer forces fuel directly into the engine's carburetor to aid in cold-weather starting. Refer to the engine manual packed with the snow thrower for more detailed instructions regarding the primer.



Ignition Key

The ignition key **must** be present and placed in the "ON" position for the engine to start.



Starter Handle

The starter handle is used to manually start the engine.

Stopping Engine

- Turn ignition key to OFF position and remove it from the snow thrower.

Electric Starter Button (If so equipped)

Pressing the electric starter button engages the engine's electric starter when plugged into a 120V power source

Electric Starter Plug (If so equipped)

Requires use of a two-prong outdoor extension cord (packed with the snow thrower) and a 120V power source/wall outlet.

Spark Plug Cover

Remove the spark plug cover to access the engine's spark plug located beneath it.

Chute Directional Control

Located on right side of dash panel, the chute directional control determines the direction that snow will be discharged. Crank it clockwise to discharge snow to the left; counterclockwise to discharge snow to the right.

Auger

When engaged, the augers rotation picks up snow that enters the auger housing and throws it out the discharge chute. The rubber paddles on the augers also aid in propelling the snow thrower as they come in contact with the pavement.

Auger Control Handle

Located on the upper handle, the auger control handle is used to engage and disengage drive to the auger. Squeeze the control handle against the upper handle to engage the auger; release it to disengage.

Discharge Chute

The pitch of the discharge chute controls the angle at which the snow is thrown. Loosen the wing knob on the side of the discharge chute before pivoting the discharge chute upward or downward. Retighten the knob once the desired position has been achieved.

Shave Plate

The shave plate scrapes along the pavement as the snow thrower is propelled, allowing the snow close to the pavement's surface to be discharged.

SECTION 4: OPERATING YOUR SNOW THROWER



WARNING: Before starting the engine, read, understand, and follow all instructions and warnings on the machine and in this manual before operating.

Fuel And Oil Mixture



WARNING: Use extreme care when handling gasoline. Gasoline is extremely flammable and the vapors are explosive. Never fuel machine indoors or while the engine is hot or running. Extinguish cigarettes, cigars, pipes and other sources of ignition.

Your snow thrower is equipped with a two-cycle engine that requires a mixture of gasoline and two cycle engine oil at a ratio of **50:1**. Refer to the *Tecumseh Engines* operator's manual for detailed instructions regarding oil and gasoline for your snow thrower's engine.

- A plastic **cup** is placed inside the fuel fill opening on the fuel tank (beneath the fuel cap) to keep debris out during product assembly. Remove and discard this cup before filling up the tank.

IMPORTANT: Do NOT operate the snow thrower without the fuel cap securely in place on the fuel tank.

Starting the Engine

- Refer to the *Tecumseh Engines* manual packed with the snow thrower for detailed instructions regarding starting the engine.

Operating the Snow Thrower

- Loosen the wing knob found on the left side of the discharge chute and pivot the upper chute upward or downward to the desired pitch. Retighten the wing knob before operating the snow thrower.
- Crank the chute directional control to position the discharge chute opening in the desired direction. See Figure 7.

NOTE: For more efficient snow clearing, discharge snow downwind whenever possible.

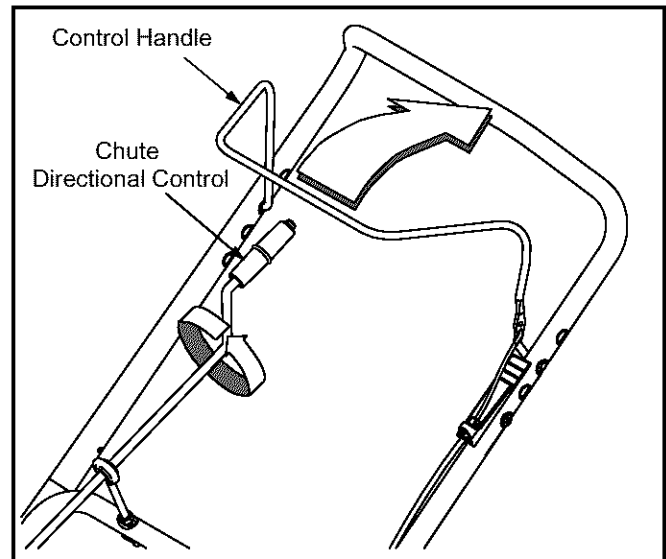


Figure 7



WARNING: Never operate the snow thrower with bystanders in front of or near the discharge chute opening.

- Engage the auger by squeezing the control handle against the upper handle. See Figure 7.
- Lift up slightly on the handle to allow the rubber paddles on the auger to contact the pavement and propel the snow thrower forward.

IMPORTANT: Excessive upward pressure on the handle will result in premature wear on the rubber auger paddles. Resulting wear would not be covered by warranty.

- As the snow thrower starts to move, maintain a firm hold on the handle, and guide the snow thrower along the path to be cleared.
- Release the auger control handle to stop the snow throwing action and the forward motion.

Stopping the Engine



WARNING: Muffler, engine and surrounding areas become hot and can cause a burn. Do not touch.

- After clearing snow, allow the engine to run for an extra few minutes before storing to help dry any moisture on the engine.
- To stop the engine: Turn the ignition key counterclockwise to the OFF position. Refer to **Ignition Key** on page 7. Remove the key from the snow thrower's ignition switch before storing.

IMPORTANT: Keep the ignition key in a safe place. The engine can not be started without it.

- Wipe all the snow and any moisture which has formed, from the unit.
- Move the choke lever back and forth several times.

SECTION 5: MAKING ADJUSTMENTS



WARNING: NEVER attempt to make any adjustments while the engine is running, except where specified in the operator's manual.

Control Cable & Belt Tension

As a result of both the control cable and the drive belt stretching due to wear, periodic adjustments may be necessary.

If the auger seems to hesitate when rotating while the engine maintains a constant speed, an adjustment is necessary. Proceed as follows:

The upper hole in the control handle provides for an adjustment in cable tension. To adjust, disconnect the end of control cable from the bottom hole in the control handle and reinsert it in the upper hole. Refer to Figure 3. Test the snow thrower to see if there is a noticeable difference.

If additional adjustment is required, proceed as follows.

- Remove the belt cover from the left side of the snow thrower's auger housing by unthreading the five hex screws which secure it in place. See Figure 8.

There are three adjustment holes provided in the idler bracket assembly. To adjust, proceed as follows:

- Move the extension spring (found on the end of the control cable) **from the low position to the middle position** on the idler bracket. See Figure 9.

NOTE: Be careful not to lose the idler spring when moving the clutch cable spring. See Figure 9.

- If the extension spring is already found in the middle position on the idler bracket, move it **from the middle position to the high position**.
- Reattach the belt cover with the five hex screws removed earlier.

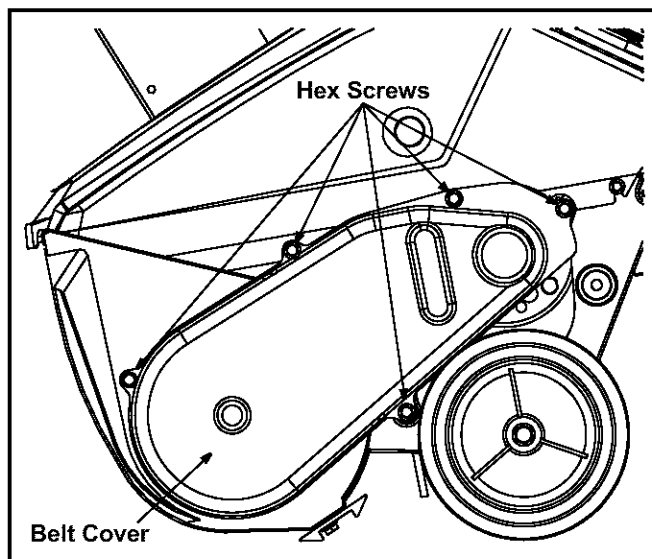


Figure 8

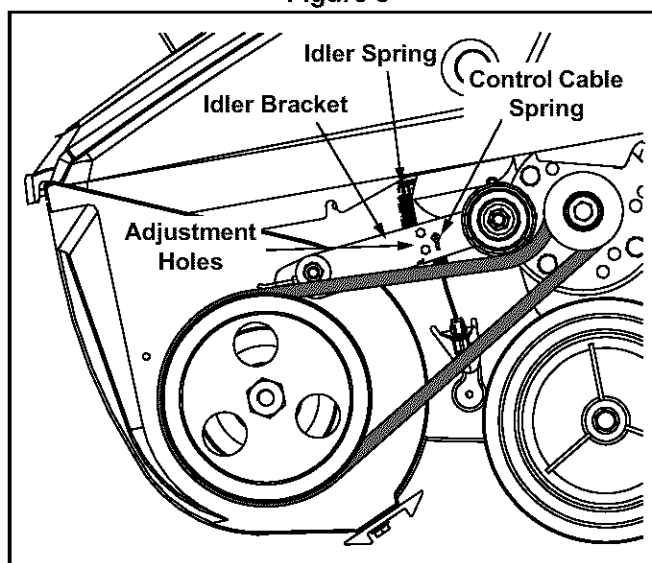


Figure 9

Shave Plate

- To check the adjustment of the shave plate, place the unit on a level surface. The wheels, shave plate and augers should all contact the level surface. Note that if the shave plate is adjusted too high, snow may blow under the housing. If the shave plate wears out excessively, or the unit will not self-propel, the shave plate may be adjusted too low.

NOTE: On new units or units with a new shave plate installed, the augers may be slightly off the ground.

- To adjust, tip the snow thrower back so that it rests on the handle. Loosen the lock nuts from the carriage bolts which secure the shave plate to the housing. See Figure 10.
- Move the shave plate to desired position and retighten the nuts and bolts. Make certain all four nuts are securely tightened.

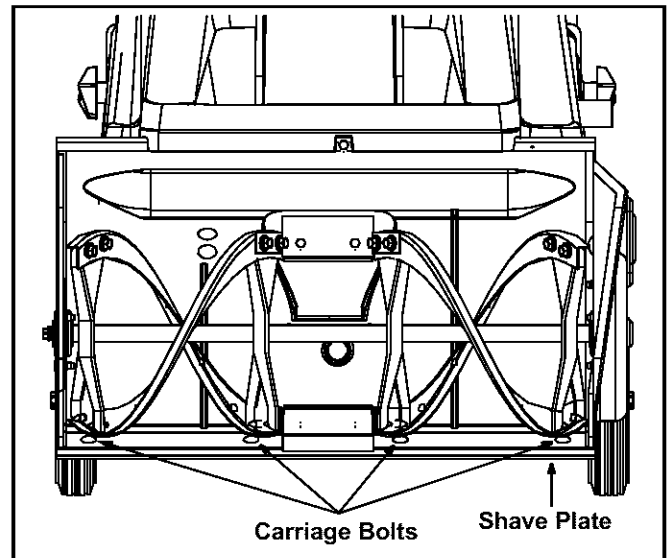


Figure 10

SECTION 6: MAINTAINING YOUR SNOW THROWER



WARNING: Before servicing, repairing, or inspecting, disengage all clutch levers and stop engine. Wait until all moving parts have come to a complete stop. Disconnect spark plug wire and ground it against the engine to prevent unintended starting.

Engine

Refer to the *Tecumseh Engines* manual packed with the snow thrower for detailed instructions regarding all engine-related maintenance.

Lubrication

- Lubricate pivot points on the control handle and the extension spring at the end of the clutch cable with a light oil once every season and before storage of the snow thrower at the end of the season.

Hardware

Check the engine and snow thrower frequently for loose or missing hardware, and tighten or replace as necessary.

Replacing the Drive Belt

The snow thrower's drive belt is subject to wear and should be replaced if any signs of cracking, shredding or rotting is present. To change the drive belt, proceed as follows:

- Install the replacement drive belt by following the

- Remove the belt cover from the left side of the snow thrower's auger housing by unthreading the five hex screws which secure it in place. Refer to Figure 8.
- Gently grasp the idler bracket and pivot it upward to ease tension on the drive belt. See Figure 11.

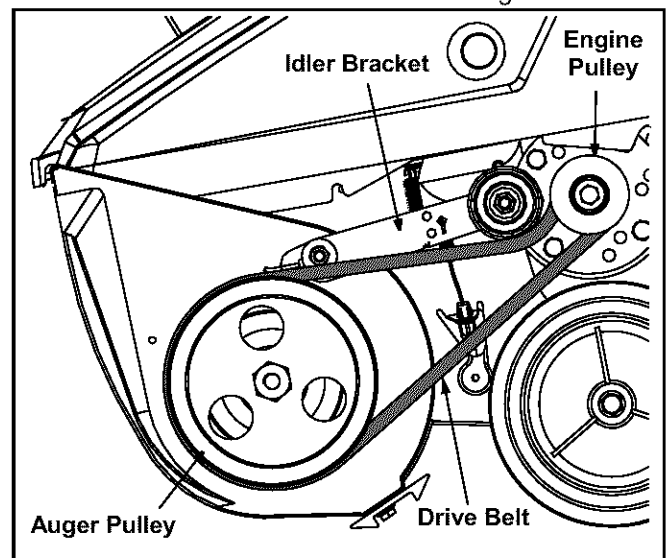


Figure 11

- While holding the idler bracket up, carefully slip the drive belt off the engine pulley. See Figure 11.
- Carefully release the idler bracket and allow it to pivot downward.
- Carefully slip the drive belt off the auger pulley, freeing it from the snow thrower. See Figure 11. preceding steps in reverse order.

- Reattach the belt cover with the five hex screws removed earlier.

Replacing the Shave Plate

The shave plate is subject to wear and should be checked periodically. There are two wearing edges and the shave plate can be reversed after one side wears out. To replace (or reverse) the shave plate, proceed as follows:

NOTE: Call 1-800-800-7310 for information regarding price and availability of Shave Plate Kit **753-0451** or contact an authorized MTD Service Dealer in your area).

- Remove the four carriage bolts and hex lock nuts which secure it to the snow thrower's auger housing. Refer to Figure 10.
- Install the new shave plate (or reverse the existing one, if both sides are not yet worn), making sure the heads of the carriage bolts are on the **inside** of the housing. The lock nuts should be on the **outside** of the housing.
- Adjust the shave plate as instructed in the **Making Adjustments** section on page 10 of this manual.
- Tighten the nuts securely before operating the snow thrower.

Replacing the Auger's Rubber Paddles

The snow thrower auger's rubber paddles are subject to wear and should be replaced if any signs of excessive wear is present.

IMPORTANT: Do NOT allow the auger's rubber paddles to wear to the point where the metal auger itself can come in contact with the pavement. Doing so can result in serious damage to your snow thrower.

NOTE: Call 1-800-800-7310 for information regarding the price and availability of Rubber Paddle Kit **753-0613** or contact an authorized MTD Service Dealer in your area).

To change the rubber paddles, proceed as follows:

- Remove the existing rubber paddles by unthreading the self-tapping screws which secure them to the auger.

IMPORTANT: There are two different styles of screws securing the rubber paddles to the auger. Note their location for ease in reassembling.

- Secure the replacement rubber paddles to the auger using the hardware removed earlier.

SECTION 7: OFF-SEASON STORAGE



WARNING: Never store engine with fuel in tank indoors or in enclosed, poorly ventilated areas where fuel fumes may reach an open flame, spark or pilot light as on a furnace, water heater, clothes dryer, or other gas appliance.

- Clean snow thrower thoroughly.
- Lubricate as instructed in the **Maintaining Your Snow Thrower** section on page 10 of this manual.
- Refer to the *Tecumseh Engines* manual packed with the snow thrower for detailed instructions regarding all engine-related storage instructions.

- Store the snow thrower in a clean, dry area.
- Place blocks under the front of the auger housing so that the snow thrower is not resting on the rubber auger paddles. The rubber can become misshaped if it supports the weight of the snow thrower for several months of storage.

NOTE: When storing any type of power equipment in an poorly ventilated or metal storage shed, care should be taken to rustproof the equipment, especially springs, cables and all moving parts.

SECTION 8: TROUBLESHOOTING GUIDE

| Problem | Cause | Remedy |
|------------------------------|--|---|
| Engine fails to start | <ol style="list-style-type: none"> 1. Key not in ignition switch or not in ON position. 2. Fuel tank empty, or stale fuel 3. Blocked fuel line 4. Spark plug wire disconnected 5. Faulty spark plug | <ol style="list-style-type: none"> 1. Insert key and turn to ON position 2. Fill tank with clean fresh gasoline/oil mixture as specified in the engine manual. 3. Clean fuel line 4. Connect wire to spark plug. 5. Clean spark plug, readjust gap, or replace. |
| Engine runs erratic | <ol style="list-style-type: none"> 1. Unit running on choke 2. Fuel line blocked, or stale fuel 3. Water or dirt in fuel system 4. Carburetor out of adjustment | <ol style="list-style-type: none"> 1. Move choke lever to off position. 2. Clean fuel line and fill tank with fresh, clean gasoline. 3. Refer to engine manual on remedy. 4. Refer to engine manual. |
| Loss of power | <ol style="list-style-type: none"> 1. Spark plug wire loose 2. Vent in fuel cap plugged 3. Engine exhaust pipe plugged. | <ol style="list-style-type: none"> 1. Connect and tighten spark plug wire. 2. Clear vent. 3. Remove obstruction from exhaust pipe. |
| Excessive vibration | <ol style="list-style-type: none"> 1. Loose parts or damaged auger | <ol style="list-style-type: none"> 1. Stop engine immediately and disconnect spark plug wire. Check for possible damage. Tighten all bolts and nuts. Repair as needed. If the problem persists, take unit to an authorized <i>MTD</i> service dealer. |
| Unit fails to self-propel | <ol style="list-style-type: none"> 1. Drive cable out of adjustment 2. Drive belt damaged | <ol style="list-style-type: none"> 1. Adjust the control cable as instructed on page 9 of this manual. 2. Inspect the drive belt for damage and replace if necessary as instructed on page 10 of this manual. |
| Unit fails to discharge snow | <ol style="list-style-type: none"> 1. Discharge chute clogged 2. Foreign object lodged in auger 3. Drive cable out of adjustment 4. Drive belt or damaged | <ol style="list-style-type: none"> 1. Stop engine immediately and disconnect spark plug wire. Clean discharge chute and the auger housing. 2. Stop engine immediately and disconnect spark plug wire. Remove object. 3. Adjust the control cable as instructed on page 9 of this manual. 4. Inspect the drive belt for damage and replace if necessary as instructed on page 10 of this manual. |

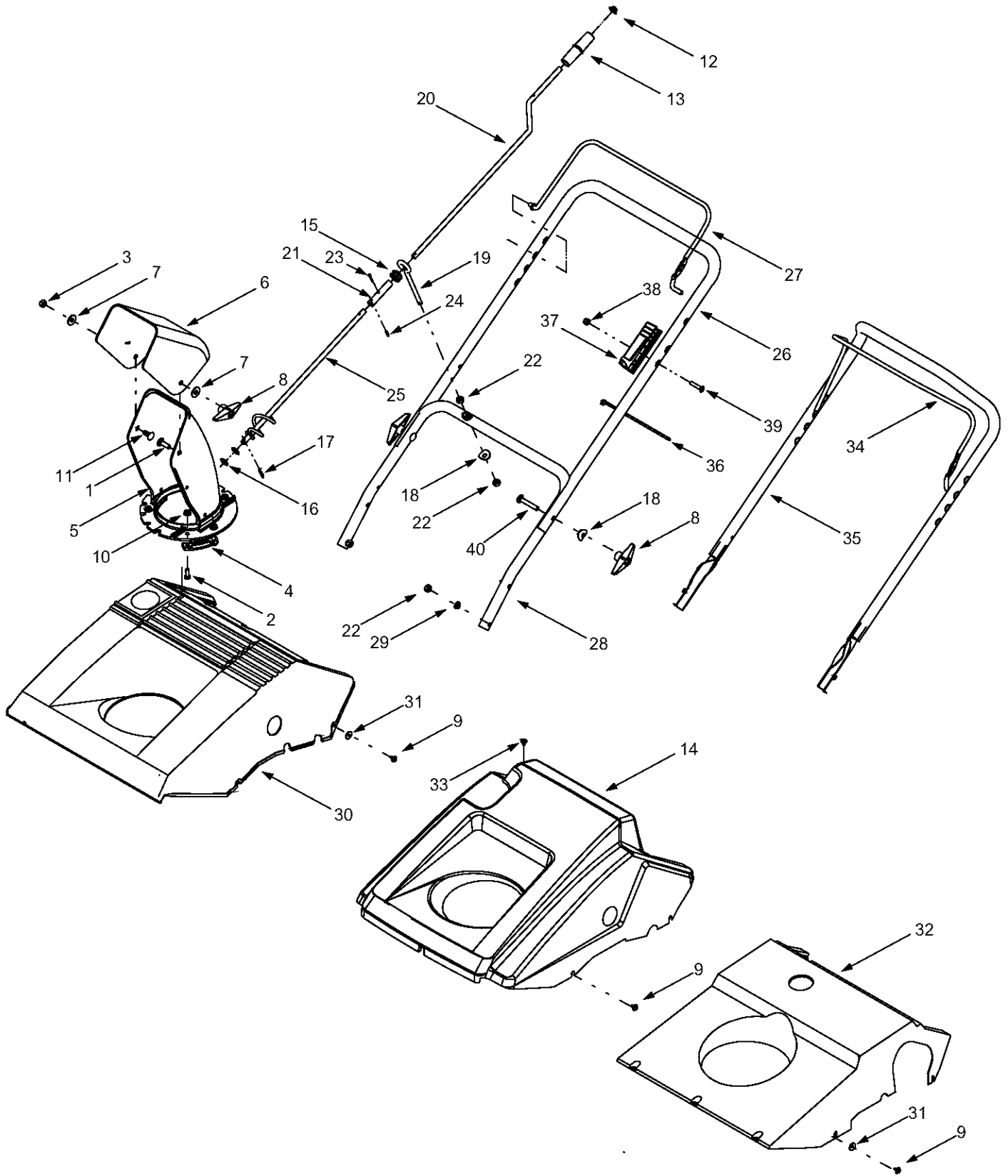
SECTION 9: ACCESSORIES & KITS

The following accessories and kits are available for **single-stage, two-stroke snow throwers**. See the retailer from which you purchased your snow thrower, an authorized *MTD* Service Dealer or phone (800) 800-7310 for information regarding price and availability.

| MODEL | DESCRIPTION |
|--------------|--|
| OEM-390-697 | Electric Start Kit (fits models with a two-cycle <i>Tecumseh</i> 3 HP or 3.5 HP engine) |
| OEM-390-996 | Electric Start Kit (fits models with a two-cycle <i>Tecumseh</i> 4.5 HP – 5 HP engine) |
| OEM-737-0325 | <i>MTD</i> two-cycle snow thrower oil (contains six 2.6 oz. bottles) |
| 753-0451 | Shave Plate (includes replacement shave plate and hardware) |
| 753-0613 | Auger Rubber Paddle Kit (includes replacement rubber paddles and hardware) |

NOTES

SECTION 10: PARTS LIST

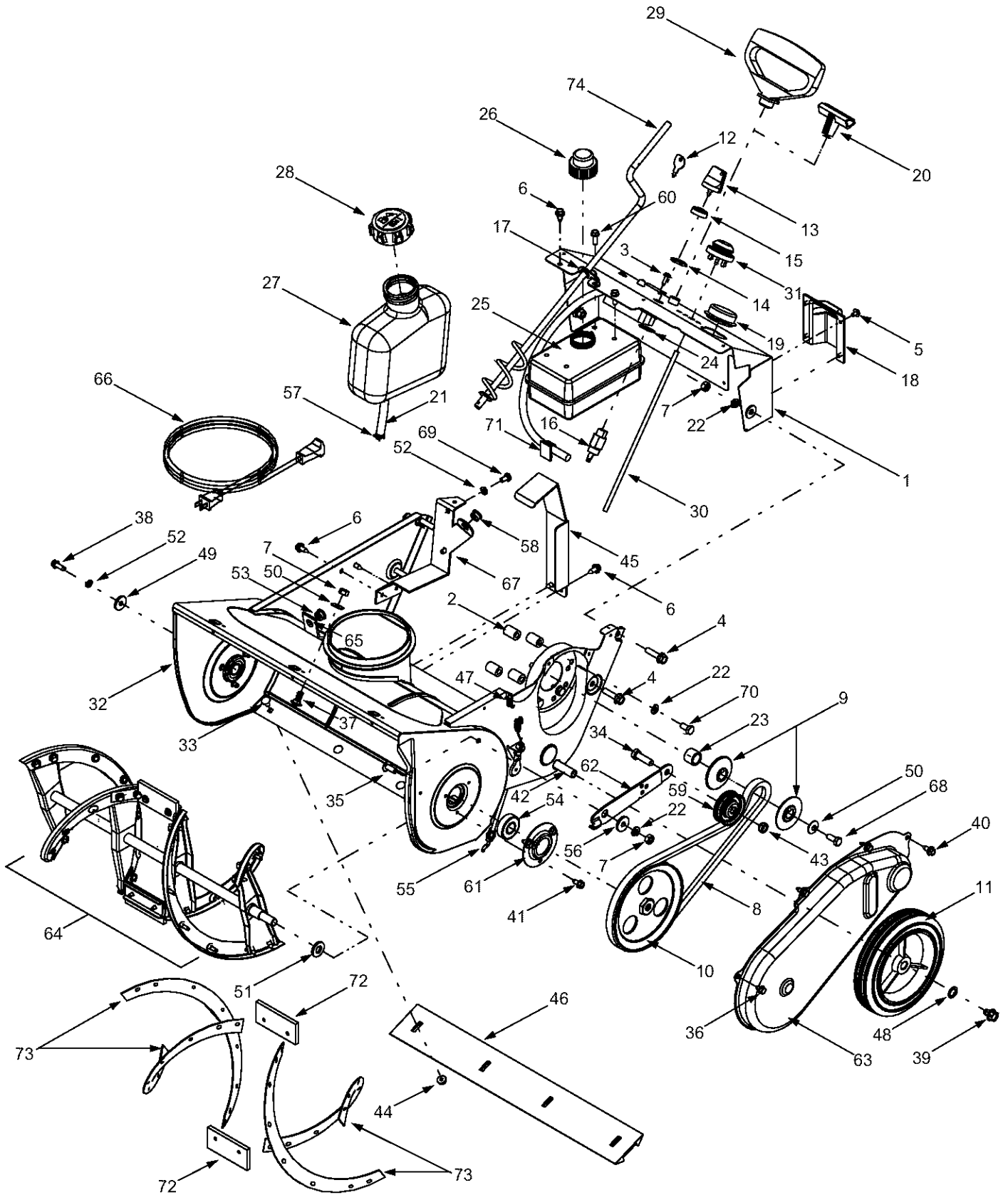


Models 140, 150, E150, E162 & E172

| REF. NO. | PART NO. | DESCRIPTION |
|----------|-----------|---|
| 1 | 710-04071 | Splined Carriage Screw, 5/16-18 x 1.0 |
| 2 | 710-3015 | Hex Cap Screw, 1/4-20 x .75 |
| 3 | 712-3068 | Hex Lock Nut, 5/16-18 |
| 4 | 731-0851A | Chute Flange Keeper |
| 5 | 731-0915C | Lower Chute, 5.0 |
| 6 | 731-0921 | Upper Chute, 5.0 |
| 7 | 736-0159 | Washer, .349 x .879 x .063 |
| 8 | 720-0284 | Wingnut Knob, 5/16-18 |
| 9 | 710-1268 | Screw, #10-16 x .375 |
| 10 | 712-3027 | Hex Flange Lock Nut, 1/4-20 |
| 11 | 710-0451 | Carriage Bolt, 5/16-18 x .75 |
| 12 | 726-0100 | Push Cap, 3/8 |
| 13 | 720-0201A | Knob, 1.0 x 3.2 |
| 14 | 731-1765 | Shroud, Black—Models E162 & E172 |
| 15 | 735-0234 | Rubber Grommet, .44 x .94 x .50 |
| 16 | 736-0185 | Flat Washer, .375 x .738 x .063 |
| 17 | 714-0104 | Internal Cotter Pin, .072 x 1.12 |
| 18 | 736-0451 | Saddle Washer, .320 x .93 |
| 19 | 747-0697 | Eyebolt, .70 |
| 20 | 747-0737 | Upper Chute Crank |
| 21 | 750-0785 | Spacer, .382 x .50 x 1.12 |
| 22 | 712-3010 | Hex Nut, 5/16-18 |
| 23 | 714-0507 | Cotter Pin, 3/32 x .75 |
| 24 | 715-0138 | Rolled Pin, 1/8 x .63 |
| 25 | 684-0126 | Chute Crank Assembly |
| 26 | 749-0705 | Upper Handle |
| 27 | 747-0946 | Auger Bail (Control Handle) |
| 28 | 749-0796B | Lower Handle |
| 29 | 736-0119 | Lock Washer, 5/16 |
| 30 | 731-1087A | Shroud, Black—Models 150 & E150 |
| 31 | 736-0400 | Flat Washer, .194 x .62 x .063 |
| 32 | 731-0702 | Shroud, Black—Model 140 |
| 33 | 710-1003 | Screw, #10-16 x .625 |
| 34 | 747-0956 | Auger Bail (Control Handle), Gullwing-style |
| 35 | 749-0711A | Upper Handle, Gullwing-style |
| — | 720-0295 | Foam Grip, 22" (not included with handle) |
| 36 | 725-0157 | Cable Tie |
| 37 | 746-0883 | Control (Cable) Housing |
| 38 | 712-0324 | Nylon Hex Lock Nut, 1/4-20 |
| 39 | 710-1270 | Machine Screw, 1/4-20 x 1.31 |
| 40 | 710-0487 | Carriage Screw 5/16-18 |

NOTE: Snow thrower features/components vary by model. NOT all parts listed above and pictured on the previous page are standard equipment.

Models 140, 150, E150, E162 & E172



Models 140, 150, E150, E162 & E172

| REF. NO. | PART NO. | DESCRIPTION | REF. NO. | PART NO. | DESCRIPTION |
|----------|------------|---|----------|-----------|---|
| 1 | 684-0054A | Dash Assembly—Model E162 (Includes Plastic Cup for Mitten Grip) | 36 | 710-0352 | Hex Index Washer Screw, 1/4-14 x .375 |
| | 684-0056 | Dash Assembly—Model 140 (Includes Plastic Sleeve for Starter Rope) | 37 | 710-0451 | Carriage Bolt, 5/16-18 x .75 |
| | 684-0160 | Dash Assembly—Model 150, E150, E172 (Includes Plastic Sleeve for Starter Rope) | 38 | 710-0642 | Self-tapping Screw 1/4-20 x .75 |
| 2 | 750-0589 | Spacer, .325 x .625 x .88—Model 140 | 39 | 710-0773 | Self-tapping Screw 3/8-16 x .50 |
| 3 | 710-1003 | Screw, #10-16 x .625 | 40 | 710-0896 | Self-tapping Screw, 1/4-14 x .625 |
| 4 | 710-1090 | Hex Flange Screw, 5/16-18 x 1.25 | 41 | 710-1005 | Self-tapping Screw, 1/4-14 x .50 |
| 5 | 710-1268 | Screw, #10-16 x .375 | 42 | 710-0848A | Axle, .35 x .5 x 20.75 |
| 6 | 710-1652 | Self-tapping Screw, 1/4-20 x .625 | 43 | 712-0116 | Jam Lock Nut, 3/8-24 |
| 7 | 712-3010 | Hex Nut, 5/16-18 | 44 | 712-3027 | Hex Flange Lock Nut, 1/4-20 |
| 8 | 754-0101A | Drive Belt—Model 150, E150, E162, E172 | 45 | 784-5177 | Engine Support Bracket—Model 140 |
| | 754-0367 | Drive Belt—Model 140 | 46 | 731-1033 | Shave Plate, 2.66 x 19.88 |
| 9 | 756-0416B | Pulley Half-.625 x 2.25 | 47 | 732-0357A | Extension Spring, .33 x 1.12 |
| 10 | 756-0475 | Auger Drive Pulley | 48 | 736-0108 | Flat Washer, .51 x .75 x .033 |
| - | 756-0550 | Auger Drive Pulley-Model 140 Series Only | 49 | 736-0176 | Flat Washer, .265 x .938 x .120 |
| 11 | 734-1176 | Wheel Assembly, 7 x 1.5 | 50 | 736-0242 | Belleville Washer, .340 x .872 |
| 12 | 725-0201 | Ignition Key | 51 | 736-0326 | Flat Washer, .51 x 1.0 x .125 |
| 13 | 725-1341B | Ignition Key w/ Plastic Cover | 52 | 736-0329 | Lock Washer, 1/4 |
| 14 | 725-1346 | Ignition Nut, 5/8-32—Model E162, E172 | 53 | 741-0475 | Plastic Bushing |
| | 712-0252 | Jam Nut, 5/8-32—Model 140, 150, E150 | 54 | 741-0600 | Ball Bearing, 17mm x 40mm x 12mm |
| 15 | 725-1347 | Ignition Switch Cap | 55 | 746-0910A | Cable, 41.78" (includes end spring) |
| 16 | 725-1425 | Ignition Switch | 56 | 748-0234 | Shoulder Spacer |
| 17 | 784-5178A | Chute Crank Bracket—Model 140 | 57 | 726-0205 | Hose Clamp, .49 |
| 18 | 731-1089A | Choke Cover | 58 | 741-0475 | Plastic Bushing, .38 |
| 19 | 731-1133C | Spark Plug Cap | 59 | 756-0313 | Flat Idler Pulley, 1.88 x .50 x 2.12 |
| 20 | 7510009630 | Recoil Handle (Standard) | 60 | 710-0895 | Hi-Lo Self-tapping Screw, 1/4-15 x .75 |
| 21 | 751-0535 | Fuel Line Hose | 61 | 784-5174 | Bearing Cup |
| 22 | 736-0119 | Lock Washer, 5/16 | 62 | 784-5175B | Brake Idler Bracket |
| 23 | 750-0716 | Spacer, .630 x .88 x .680 | 63 | 784-5176 | Belt Cover |
| 24 | 736-0225 | Internal Lock Washer, 5/8 x 1.058 x .046 | 64 | 784-5485 | Solid Shaft Auger Assembly |
| 25 | 751-0352 | Gas Tank, 1 qt—Model 140 | 65 | 784-5720 | Chute Crank Bracket |
| 26 | 751-0353 | Fuel Cap for 751-0352 | 66 | 629-0236 | 110V Extension Cord, 2-prong |
| 27 | 751-0540A | Gas Tank, 2 qt.—Model 150, E150, E162, E172 | 67 | 705-5139A | Fuel Tank Support Bracket—Model 150, E150, E162 & E172 |
| 28 | 751-0800 | Fuel Cap for 751-0540A (50:1 Red Print) | 68 | 710-0157 | Hex Cap Screw, 5/16-24 x .75 |
| 29 | 7510009636 | Recoil Handle (Mitten Grip) | 69 | 710-3013 | Hex Cap Screw, 1/4-20 x .50 |
| 30 | 723-0354 | Primer Tube | 70 | 710-3025 | Hex Cap Screw, 5/16-24 x .625 —Model 150, E150, E162, E172 |
| 31 | 751-0354 | Primer Bulb | | 710-0805 | Hex Cap Screw, 5/16-18 x 1.50 —Model 140 |
| 32 | 684-0114B | Auger Housing Assembly | 71 | 726-0152 | Self-adhesive Clamp, .5 (for starter cable) |
| 33 | 710-0167 | Screw, 1/4-20 x .50 | 72 | 731-0782 | Rubber Paddle |
| 34 | 710-0191 | Cap Screw, 3/8-24 x 1.25 | 73 | 731-0780A | Rubber Paddle/Spiral |
| 35 | 710-0323 | Trus Machine Screw, 5/16-18 x .75 | 74 | 784-5344 | Chute Crank Assembly—Model 140 |

IMPORTANT: For a proper working machine, use Factory Approved Parts. **V-belts** are designed to engage and disengage safely. A substitute (non OEM) V-belt can be dangerous by not disengaging completely.

NOTE: Snow thrower features/components vary by model. NOT all parts listed above and pictured on the previous page are standard equipment.

NOTES

MANUFACTURER'S LIMITED WARRANTY FOR:



The limited warranty set forth below is given by MTD LLC with respect to new merchandise purchased and used in the United States, its possessions and territories.

MTD LLC warrants this product against defects for a period of two (2) years commencing on the date of original purchase and will, at its option, repair or replace, free of charge, any part found to be defective in materials or workmanship. This limited warranty shall only apply if this product has been operated and maintained in accordance with the Operator's Manual furnished with the product, and has not been subject to misuse, abuse, commercial use, neglect, accident, improper maintenance, alteration, vandalism, theft, fire, water, or damage because of other peril or natural disaster. Damage resulting from the installation or use of any accessory or attachment not approved by MTD LLC for use with the product(s) covered by this manual will void your warranty as to any resulting damage.

Normal wear parts or components thereof are subject to separate terms as follows: All normal wear parts or component failures will be covered on the product for a period of 90 days regardless of cause. After 90 days, but within the two year period, normal wear part failures will be covered ONLY IF caused by defects in materials or workmanship of OTHER component parts. Normal wear parts and components include, but are not limited to: batteries, belts, blades, blade adapters, grass bags, rider deck wheels, seats, snow thrower skid shoes, shave plates, auger spiral rubber, and tires.

HOW TO OBTAIN SERVICE: Warranty service is available, WITH PROOF OF PURCHASE, through your local authorized service dealer. To locate the dealer in your area, check your Yellow Pages, or contact MTD LLC at P.O. Box 361131, Cleveland, Ohio 44136-0019, or call 1-800-800-7310 or 1-330-220-4683 or log on to our Web site at www.mtdproducts.com.

This limited warranty does not provide coverage in the following cases:

- a. The engine or component parts thereof. These items carry a separate manufacturer's warranty. Refer to applicable manufacturer's warranty for terms and conditions.
- b. Log splitter pumps, valves, and cylinders have a separate one year warranty.
- c. Routine maintenance items such as lubricants, filters, blade sharpening, tune-ups, brake adjustments, clutch adjustments, deck adjustments, and normal deterioration of the exterior finish due to use or exposure.

- d. MTD LLC does not extend any warranty for products sold or exported outside of the United States, its possessions and territories, except those sold through MTD LLC's authorized channels of export distribution.
- e. Parts that are not genuine MTD parts are not covered by this warranty.
- f. Service completed by someone other than an authorized service dealer is not covered by this warranty.
- g. Transportation charges and service calls are not covered.

No implied warranty, including any implied warranty of merchantability of fitness for a particular purpose, applies after the applicable period of express written warranty above as to the parts as identified. No other express warranty, whether written or oral, except as mentioned above, given by any person or entity, including a dealer or retailer, with respect to any product, shall bind MTD LLC. During the period of the warranty, the exclusive remedy is repair or replacement of the product as set forth above.

The provisions as set forth in this warranty provide the sole and exclusive remedy arising from the sale. MTD LLC shall not be liable for incidental or consequential loss or damage including, without limitation, expenses incurred for substitute or replacement lawn care services or for rental expenses to temporarily replace a warranted product.

Some states do not allow the exclusion or limitation of incidental or consequential damages, or limitations on how long an implied warranty lasts, so the above exclusions or limitations may not apply to you.

In no event shall recovery of any kind be greater than the amount of the purchase price of the product sold. **Alteration of safety features of the product shall void this warranty.** You assume the risk and liability for loss, damage, or injury to you and your property and/or to others and their property arising out of the misuse or inability to use the product.

This limited warranty shall not extend to anyone other than the original purchaser or to the person for whom it was purchased as a gift.

HOW STATE LAW RELATES TO THIS WARRANTY: This limited warranty gives you specific legal rights, and you may also have other rights which vary from state to state.