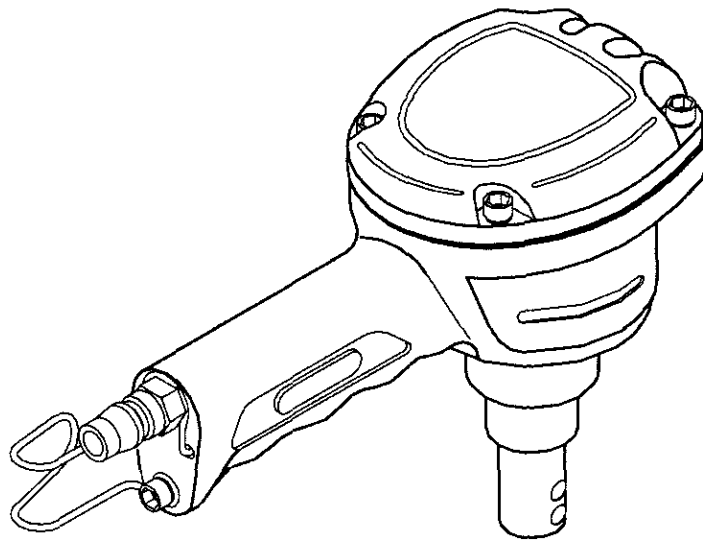


Operator's Manual

CRAFTSMAN®

PALM NAILER

Model No.
351.182930



- **Safety**
- **Operation**
- **Parts List**

CAUTION: Read and follow all Safety Rules and Operating Instructions before First Use of this Product.

Sears, Roebuck and Co., Hoffman Estates, IL 60179 U.S.A.

2698.01 Draft (06/21/00)

TABLE OF CONTENTS

Warranty	2	Troubleshooting	5
Safety Rules	2	Parts Illustration and List	6-7
Operation	2-3		

WARRANTY

FULL ONE YEAR WARRANTY ON CRAFTSMAN AIR-DRIVE TOOLS

If this Craftsman air-drive tool fails due to a defect in material or workmanship within one full year from the date of purchase, return it to the nearest Sears Service Center in the United States, and Sears will repair it free of charge.

If this air-drive tool is used for commercial purposes, this warranty applies for only 90 days from the date of purchase.

This warranty gives you specific legal rights and you may also have other rights which vary from state to state.

Sears, Roebuck and Co., Dept. 817WA, Hoffman Estates, IL 60179

SAFETY RULES

- Air tool operators and all others in work area should always wear safety goggles complying with United States ANSI Z87.1 to prevent eye injury from fasteners and flying debris when loading, operating or unloading this tool.
- Never exceed operating pressure of 100 PSI.
- Always keep hands and body away from the fastener discharge area when air supply is connected to tool.
- Always disconnect tool from air supply when servicing or adjusting tool and when tool is not in use.
- Never point tool at yourself or others.
- Do not use oxygen, combustible gas or high pressure compressed gas as the air supply for the tool.
- Always use tool at safe distance from other people in work area.
- Do not attempt to discharge fastener into hard or brittle materials such as concrete, steel or tile.
- Do not connect female quick-disconnect coupling to tool side of air line.
- Connect male, free-flow nipple to tool side of air line so that tool is depressurized when hose is disconnected.
- Do not use a hose swivel with this tool.

OPERATION

DESCRIPTION

The Craftsman Palm Nailer drives 2-5" long nails. Lightweight die cast aluminum body with handle provides easy maneuverability in where hammers and other tools will not work. Nailer has a

magnetic nose to hold nails for accurate, safe placement and includes a belt hook. Craftsman nailer is ideal for installation of electrical boxes, rafter bracing, joint hangers, fencing, decking and framing.

SPECIFICATIONS

- Nail length 2-5" (5d-40d)
- Nail head size (dia.) 1/4 to 13/32"
- Nail size (dia.) 7/64 to 3/16"
- Operating pressure 60-100 PSI
- Air inlet 1/4" N.P.T.
- Length 8"
- Height 5 1/2"
- Width 3 3/4"
- Weight 1.50 lbs.

AIR SUPPLY LINE

Refer to Figure 1.

- The air tool operates on compressed air at pressures from 60 to 100 PSI.
- Never exceed maximum pressure.

Minimum air requirements for tool:
Average working SCFM 2.6 at 90 PSI.

WARNING: Keep hands and body away from discharge area of tool when connecting air supply. Always disconnect tool from air supply when servicing or adjusting tool and when tool is not in use.

- Air operated tools require clean, dry, compressed air to ensure top performance, low maintenance and long life.
- Dirt and abrasive materials present in all air lines will damage tool O-rings, valves and cylinders.
- Moisture will reduce tool performance and life if not removed from compressed air.
- A filter-regulator system is required and should be located as close to

tool as possible (see Figure 1). A distance of less than 15 feet is recommended.

- Keep air filter clean. A dirty filter will reduce the air pressure to the tool causing a reduction in power and efficiency.
- The air supply system must be able to provide air pressure of 60 to 100 pounds per square inch at tool.
- All hoses and pipes in the air supply system must be clean and free of moisture and foreign particles.
- Do not mount swivel connector in air supply line.
- The air pressure should be properly regulated.
- Different workpiece materials and fastener lengths will require different operating pressure.
- Be sure all connections in air supply system are sealed to prevent air loss.
- Never connect a female quick-disconnect coupling to the tool side of air line connection. A male, free-flow coupling should be connected to the tool side of air line connection.

WARNING: The female coupling provides a seal preventing loss of compressed air from compressor tank when disconnected from male coupling. If connected to tool side of air supply, the female coupling could seal a compressed air charge in the tool which could discharge if the trigger is actuated.

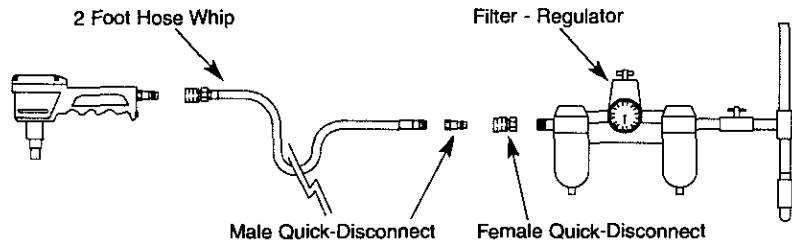


Figure 1 - Air Supply Line

NAILING OPERATION

Refer to Figures 2 & 3, pages 4 and 6.

WARNING: Do not operate tool without fasteners or damage to tool may result. Never point the tool at yourself or others.

- Position and place the fastener where it must be applied.
- Slide the nailer on to the fastener so that the magnets in the guide bushing (Key No. 18) contact the fastener head.
- Hold body firmly with palm on the palm rest and fingers on the finger rest. If necessary, use other hand on the handle.
- Gently push nailer against fastener head to activate. The nailer will automatically stop when the nail is driven completely.

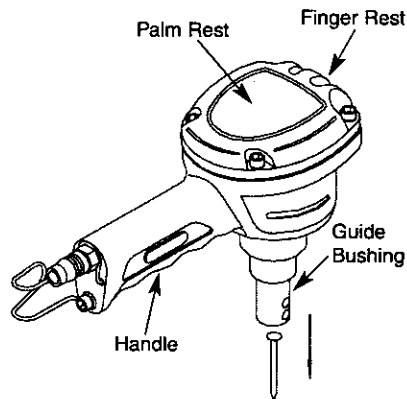


Figure 2 - Nailing Operation

OPERATING PRESSURE

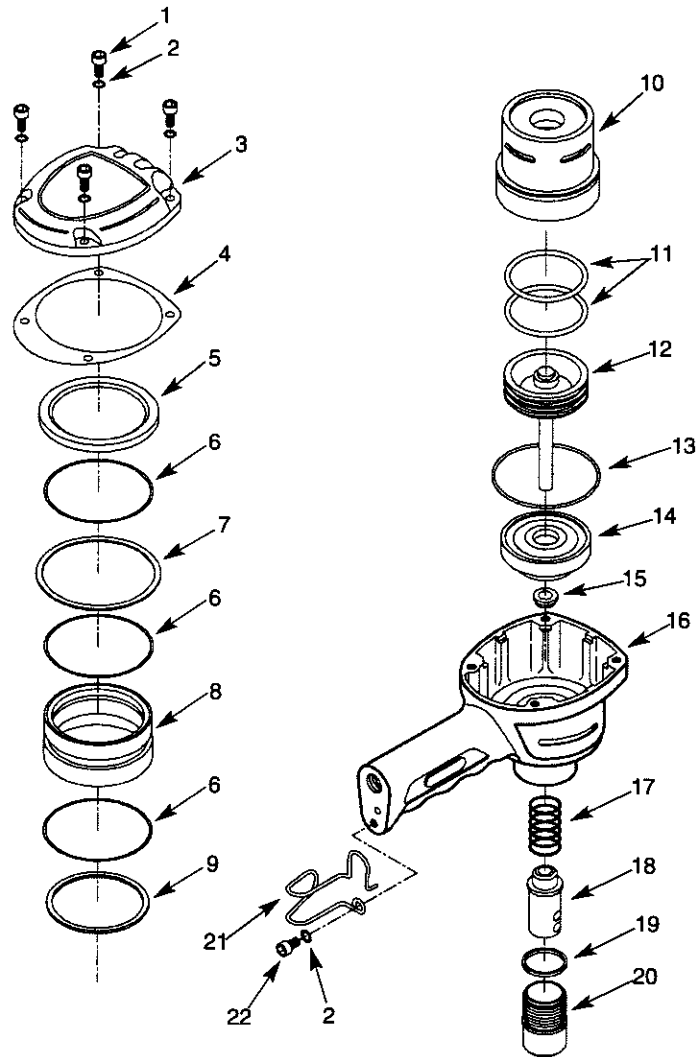
- Use only enough air pressure to perform the operation. Air pressure in excess of that which is required will make the operation inefficient and may cause premature wear or damage to the tool.
- Determine minimum air pressure required by driving some test fasteners into the workpiece. Set air pressure so that test fasteners are driven down flush with the work surface. Fasteners driven too deep may damage workpiece.

TROUBLESHOOTING

SYMPTOM	POSSIBLE CAUSE(S)	CORRECTIVE ACTION
Cap leaks air	<ol style="list-style-type: none"> 1. Cap bolts loose 2. Damaged gasket 	<ol style="list-style-type: none"> 1. Tighten bolts (Fig. 3, No. 1) 2. Check and replace damaged gasket (Fig. 3, Nos. 4 and 5)
Tool leaks air	<ol style="list-style-type: none"> 1. Damaged O-rings 2. Damaged Bumper 	<ol style="list-style-type: none"> 1. Check and replace damaged O-rings (Fig. 3, Nos. 6, 11 and 13) 2. Check and replace damaged bumper (Fig. 3, No. 14)
Tool will not operate	<ol style="list-style-type: none"> 1. Insufficient air supply 2. Damaged or worn head valve O-rings 3. Head valve binding 	<ol style="list-style-type: none"> 1. Check air supply 2. Replace damaged or worn O-rings (Fig. 3, No. 6) 3. Clean and lubricate cap and valve (Fig. 3, Nos. 3 and 8)
Tool operates slowly or loses power	<ol style="list-style-type: none"> 1. Damaged or worn O-rings 2. Cylinder not sealed on bumper properly 3. Insufficient air supply 	<ol style="list-style-type: none"> 1. Check and replace damaged or worn O-rings 2. Disassemble cylinder and assemble properly 3. Check air supply

Model 351.182930

Figure 3 - Replacement Parts Illustration for Stapler



REPLACEMENT PARTS LIST FOR STAPLER			
KEY NO.	PART NO.	DESCRIPTION	QTY.
1	6045.00	5-0.8 x 20mm Socket Head Bolt	4
2	STD852005	5mm Lock Washer*	5
3	9810.00	Cap	1
4	9811.00	Gasket	1
5	9812.00	Seal	1
6	9813.00	52.07 x 2.62mm O-Ring	3
7	9814.00	Ring	1
8	9815.00	Valve	1
9	9816.00	Seal	1
10	9817.00	Cylinder Assembly	1
11	9818.00	42.20 x 3.5mm O-Ring	2
12	9819.00	Piston Ram Assembly	1
13	9820.00	59.50 x 2mm O-Ring	1
14	9821.00	Bumper	1
15	9822.00	Bushing	1
16	9823.00	Body	1
17	9824.00	Spring	1
18	9825.00	Guide Bushing with Magnets	1
19	9827.00	Seal	1
20	9828.00	Guide Box	1
21	9959.00	Hanger	1
22	5331.00	5-0.8 x 12mm Socket Head Bolt	1
Δ	2698.01	Operator's Manual	1

* Standard hardware item available locally.

Δ Not Shown

**In U.S.A. or Canada
for in-home major brand repair service:**

Call 24 hours a day, 7 days a week

1-800-4-MY-HOMESM (1-800-469-4663)

Para pedir servicio de reparación a domicilio – 1-800-676-5811

Au Canada pour tout le service – 1-877-LE-FOYERSM (1-877-533-6937)

For the repair or replacement parts you need:

Call 6 a.m. – 11 p.m. CST, 7 days a week

PartsDirectSM

1-800-366-PART (1-800-366-7278)

www.sears.com/partsdirect

Para ordenar piezas con entrega a domicilio – 1-800-659-7084

For the location of a Sears Service Center in your area:

Call 24 hours a day, 7 days a week

1-800-488-1222

To purchase or inquire about a Sears Maintenance Agreement:

Call 7 a.m. – 5 p.m. CST, Monday – Saturday

1-800-827-6655

