

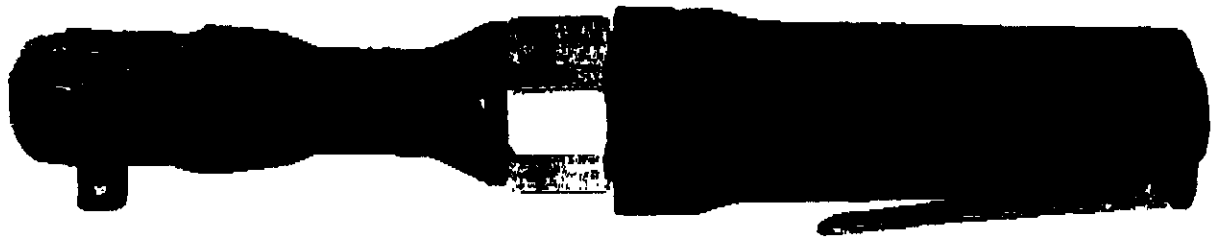
SEARS Owner's Manual

CRAFTSMAN®

PROFESSIONAL

Pneumatic 3/8" Drive **RATCHET WRENCH**

Model No.
875.199190



WARNING:

Before operating tool, read
this manual and follow all
Safety Recommendations and
Operating Instructions.

- ◆ Safety
- ◆ Warranty
- ◆ Features & Operation
- ◆ Maintenance
- ◆ Español

Sears, Roebuck and Co., Hoffman Estates, IL 60179 USA

SAFETY INSTRUCTIONS

Read Operating Instructions

Please become familiar with all the instructions and warnings before operating any pneumatic tool.

Always Wear Approved Eye Protection

Impact resistant eye protection should meet or exceed the standards set forth in ANSI Z87.1, Occupational and Educational Eye and Face Protection. Look for marking Z87.1 on your eye protection to ensure that it is an approved style.

Hearing Protection is Recommended

Hearing protection should be used when the noise level exposure equals or exceeds an 8 hour time-weighted average sound level of 85dBA. Process noise, reflective surfaces, other tools being operated nearby, all add to the noise level in a given work area. If you are unable to determine your noise level exposure, we recommend the use of hearing protection.

Avoid Prolonged Exposure to Vibration

Pneumatic tools can vibrate during use. Prolonged exposure to vibration or very repetitive hand and arm movements can cause injury. Discontinue the use of any tool if you experience tingling, numbness, discomfort or pain in your hands or arms. You should consult your physician before resuming use of tool.

90 PSIG Maximum

This tool is designed to operate at an air pressure of 90 pounds per square inch gauge pressure (90 PSIG) maximum, at the tool. Use of higher air pressure can and may cause injury. Also, the use of higher air pressure places the internal components under loads and stresses they were not designed for, which could cause premature tool failure.

NOTE: THE AIR SUPPLY SHOULD BE CLEAN AND DRY, PREFERABLY LUBRICATED, FOR BEST RESULTS DRAIN THE MOISTURE FROM YOUR COMPRESSOR DAILY.

Use Only Power Sockets & Accessories

Sockets and accessories used shall be of the power socket type. Always check sockets, retainers and drives regularly for wear or damage and replace whenever necessary.

WARNING:

SOME DUST CREATED BY POWER SANDING, SAWING, GRINDING, DRILLING, AND OTHER CONSTRUCTION ACTIVITIES CONTAINS CHEMICALS KNOWN TO CAUSE CANCER, BIRTH DEFECTS OR REPRODUCTIVE HARM. SOME EXAMPLES OF THESE CHEMICALS ARE:

- LEAD FROM LEAD-BASED PAINTS
- CRYSTALLINE SILICA FROM BRICKS, CEMENT AND OTHER MASONRY PRODUCTS
- ARSENIC AND CHROMIUM FROM CHEMICALLY TREATED LUMBER

YOUR RISK FROM THESE EXPOSURES VARIES, DEPENDING ON HOW OFTEN YOU DO THIS TYPE OF WORK. TO REDUCE YOUR EXPOSURE TO THESE CHEMICALS, WORK IN A WELL VENTILATED AREA AND WORK WITH APPROVED SAFETY EQUIPMENT SUCH AS THOSE DUST MASKS THAT ARE SPECIALLY DESIGNED TO FILTER OUT MICROSCOPIC PARTICLES.

WARRANTY

FULL TWO YEAR WARRANTY ON CRAFTSMAN AIR-DRIVE TOOLS

If this Craftsman Air-Drive Tool fails to give complete satisfaction within two years from the date of purchase, RETURN IT TO THE NEAREST SEARS SERVICE CENTER/DÉPARTMENT IN THE UNITED STATES, and Sears will repair it, free of charge. If this Craftsman tool is used for commercial or rental purposes, this warranty applies for only 90 days from the date of purchase. This warranty gives you specific legal rights, and you may also have other rights which vary from state to state.

Sears, Roebuck and Co., Dept. 817WA, Hoffman Estates, IL 60179.

DESCRIPTION

The Craftsman Pro Model 875.199190 3/8" Drive Ratchet Wrench is designed for applications such as automotive repair, general assembly, transmission tear-down, and maintenance. Features include a lever throttle for speed control and a low profile head for work in close quarters.

FEATURES & OPERATION

Features

- Molded polyurethane housing cover for increased operator control and comfort.
- 1-1/8" Ratchet head height (without socket) for use in close-quarter applications.
- Front exhaust directs air away from operator.

The Craftsman Pro 3/8" Drive Ratchet Wrench is designed to operate on 90 PSIG. Lower pressure (below 90 PSIG) will reduce performance of the tool while higher air pressure (over 90 PSIG) raises the performance of the tool beyond its rated capacity and could cause serious damage to tool and user.

Always use clean dry air. Excessive moisture and dirt will greatly reduce the life of any air motor. We recommend the installation of an in-line filter-regulator-lubricator as close to the tool as possible.

A 3/8" air hose is required up to a length of 8 ft. If more length is required, a 1/2" air hose should be connected to the 3/8" hose to ensure the tool has the necessary air supply. Be sure all hoses and fittings are the correct size and tightly secured.

This ratchet is equipped with a lever throttle which allows the operator to vary the speed. Direction control is located on the back of the ratchet head. Initial tightening and loosening of fasteners should be done manually with ratchet used as a hand tool. Nuts may then be run on and off with relative ease.

Keep socket firmly against work surface when running the ratchet to avoid dislodging the socket from the anvil. Excessive torque leverage above the tool specifications will result in premature gear wear.

recommended as it increases tool life and keeps the tool in sustained operation. The in-line lubricator should be regularly checked and filled with air tool oil. Proper adjustment of the in-line lubricator is performed by placing a sheet of paper next to the exhaust ports and holding the throttle open approximately 30 seconds. The lubricator is properly set when a light stain of oil collects on the paper. Excessive amounts of oil should be avoided.

In the event that it becomes necessary to store the tool for an extended period of time (overnight, weekend, etc.), it should receive a generous amount of lubrication at that time. The tool should be run for approximately 30 seconds to ensure oil has been evenly distributed throughout the tool. The tool should be stored in a clean and dry environment.

Recommended lubricants: Use air tool oil or any other high grade turbine oil containing moisture absorbent, rust inhibitors, metal wetting agents and an EP (extreme pressure) additive.

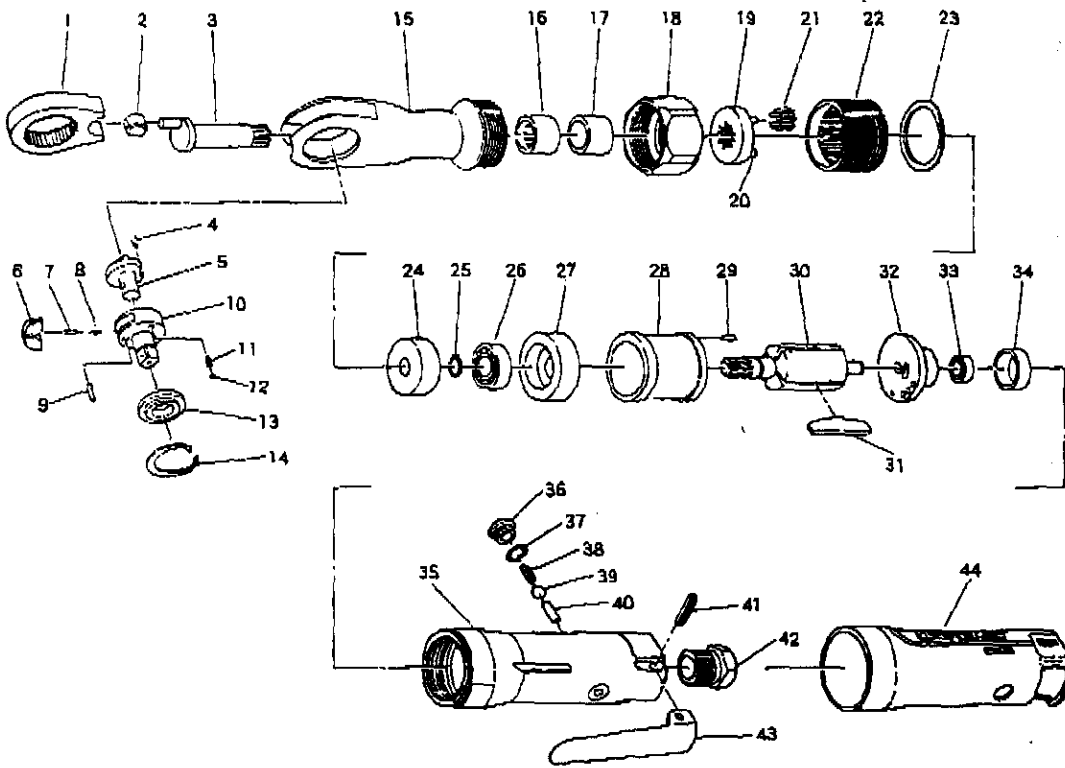
Specifications

- Free Speed RPM 150
- Drive 3/8-in.
- Air Inlet 1/4-in. NPT
- Working Torque 65 ft.-lbs.
- Length 10-in.
- Weight 2.4 lbs.
- Recommended Hose Size 3/8-in.
- Average Air Consumption 4 CFM
- Maximum operating pressure 90 PSI

TROUBLESHOOTING				
Low Power	Erratic Action	Blows Air Won't Run	Tool Noisy	Causes and Solutions
X				Check air pressure.
X	X	X	X	Check for water in lines.
		X		Check forward / reverse lever.
X	X	X	X	Oil tool with air tool oil.

Pneumatic 3/8" Drive Ratchet Wrench

Exploded View and Parts List



Ref.	Part No.	Description	Q'ty.	Ref.	Part No.	Description	Q'ty.
1	8729200	Yoke	1	23	89013126	Lock Washer	1
2	8729177	Drive Bushing	1	24	89013128	Flywheel	1
3	89013124	Crank Shaft	1	25	89013129	Retainer	1
4	8731043	Roll Pin	1	26	81001532	Ball Bearing	1
5	8731042	Reverse Lever	1	27	8731035	Front Plate	1
6	8729170	Ratchet Pawl	1	28	8729183	Cylinder	1
7	8729190	Reverse Pin	1	29	8729182	Roll Pin	1
8	8729168	Reverse Spring	1	30	89013127	Rotor	1
9	8729197	Dowel Pin	1	31	8732445	Rotor Blade	4
10	8731044	Anvil	1	32	8731033	Rear Plate	1
11	8729175	Thrust Washer Spring	2	33	8729012	Ball Bearing	1
12	81004968	Steel Ball	2	34	8729178	Bearing Cap	1
13	8729194	Thrust Washer	1	35	8900946	Motor Housing (incl. Bush.)	1
14	8729191	Retaining Ring	1	36	8729173	Valve Screw	1
15	89013125	Ratchet Housing	1	37	81008680	O-Ring	1
16	8729186	Needle Bearing	1	38	8729163	Valve Spring	1
17	8731039	Bushing	1	39	81015215	Valve	1
18	8729199	Lock Ring	1	40	8729164	Valve Pin	1
19	8732446	Planet Cage (incl. 20)	1	41	8729167	Lever Pin	1
20	8900202	Planet Pin	3	42	8729162	Inlet Bushing	1
21	8731038	Planet Gear	3	43	8732444	Throttle Lever	1
22	8731036	Internal Gear	1	44	8900947	Housing Cover	1

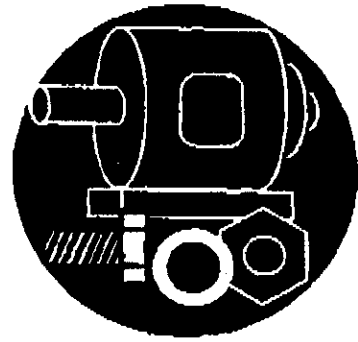
**For the repair or replacement
parts you need delivered directly to your home**

Call 7 am - 7 pm, 7 days a week

1-800-366-PART

(1-800-366-7278)

**Para ordenar piezas con entrega
a domicilio - 1-800-659-7084**



**For the location of a
Sears Parts and Repair Center
in your area**

Call 24 hours a day, 7 days a week

1-800-488-1222



**For more information on
purchasing a Sears
Maintenance Agreement or to inquire
about an existing Agreement**

Call 9 am - 5 pm, Monday-Saturday

1-800-827-6655



The model number of your air tool is located
on the serial plate attached to the tool.

When requesting service or ordering parts,
always give the following information:

- Product Type
- Pneumatic Tool
- Model Number
- Part Description

SEARS
America's Repair Specialists

Sears, Roebuck and Co., Hoffman Estates, IL 60179 USA

Printed in Japan
Impreso en Japon
401