

ASSEMBLY GUIDE

RT1

- Parts**
- 1 Safety Key
 - 2 Water Bottle Holders
 - 1 Hardware Pack (contents listed below)
 - Left and right outer console mast boots
 - Console

- Tools (included)**
- 5mm Allen Wrench/Phillips Screw Driver
 - Flat Wrench
 - 6mm Allen Wrench

H A R D W A R E



A) Linkage Arm
40mm bolt
Quantity: 2

B) Console Assembly
Bracket
45mm bolt
Quantity: 2

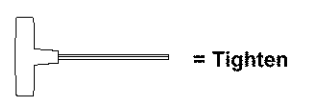


C) Console Assembly
Bracket
13mm nylon nut
Quantity: 2

D) Console Mast Boot
16mm bolt
Quantity: 6

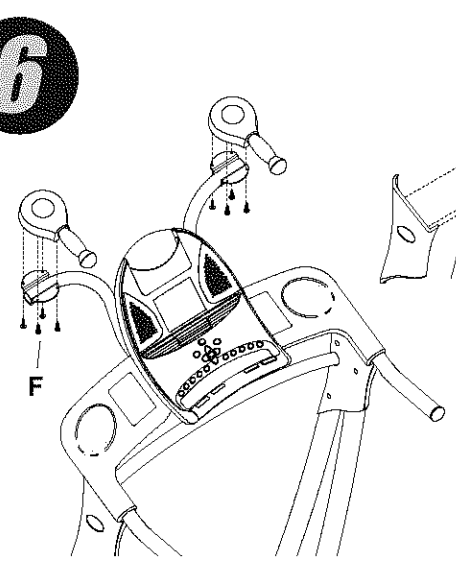
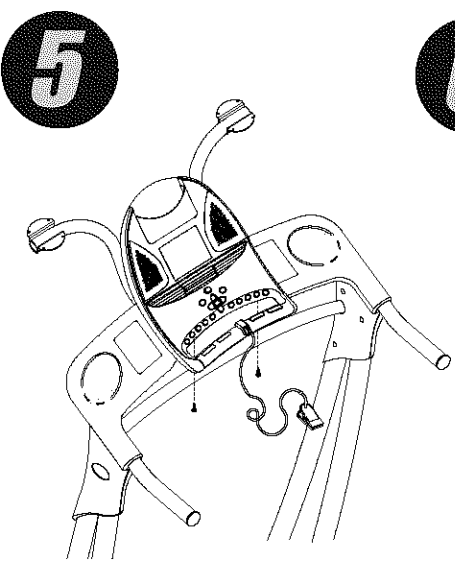
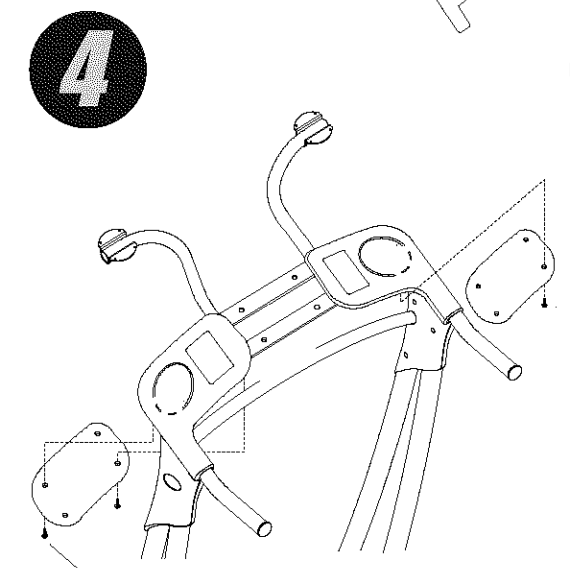
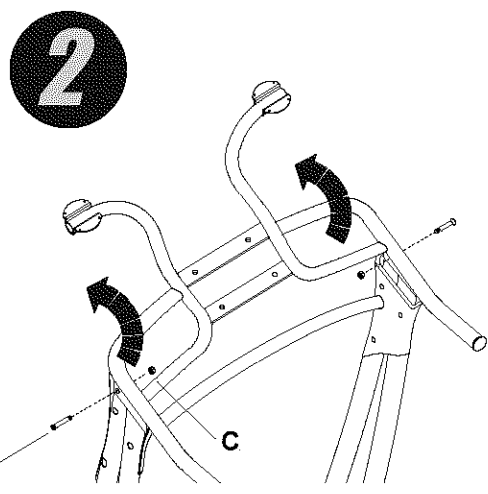
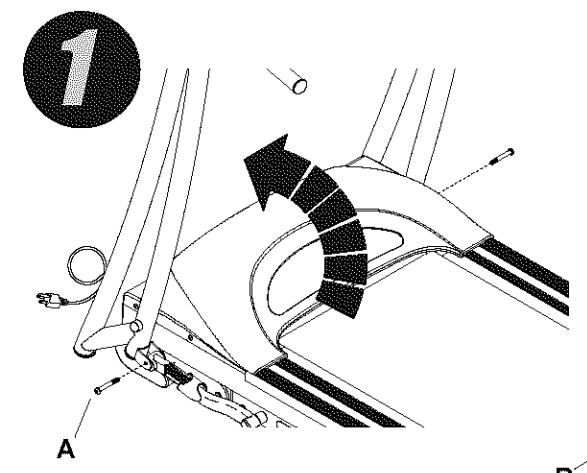


F) Screw
Quantity: 16



NOTE: Console screws come Pre-Attached.

NOTE: It is recommended that you apply grease to the threads of each bolt as you assemble your treadmill, to prevent loosening and noise. Also, during each assembly step, ensure that ALL nuts and bolts are in place and partially threaded in before completely tightening any ONE bolt.



U N P A C K I N G

Take caution when handling and transporting this unit. Never open box when it is on its side. Once the banding straps have been removed, do not lift or transport this unit unless it is fully assembled and in the upright folded position, with the lock latch secure. Unpack the unit where it will be used. The enclosed treadmill is equipped with high-pressure shocks and may spring open if mishandled. See owner's guide for reference. **FAILURE TO FOLLOW THESE INSTRUCTIONS COULD RESULT IN INJURY!** Place your treadmill on a level flat surface. It is recommended that you place a protective covering on your floor.

