

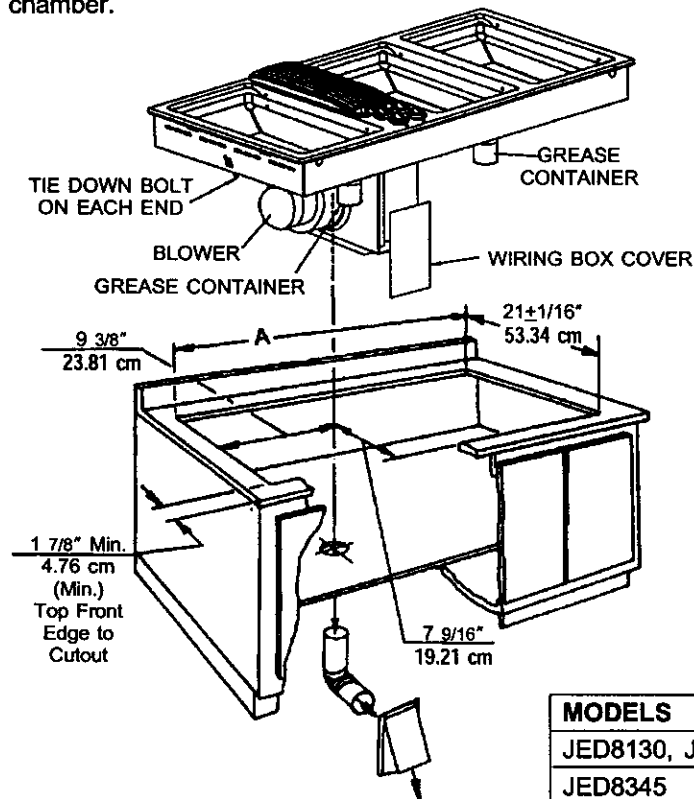
# INSTALLATION MANUAL

## Electric Convertible Cooktop Models JED8130, JED8230 & JED8345

**JENN-AIR**  
403 WEST FOURTH STREET, NORTH • NEWTON, IA 50208

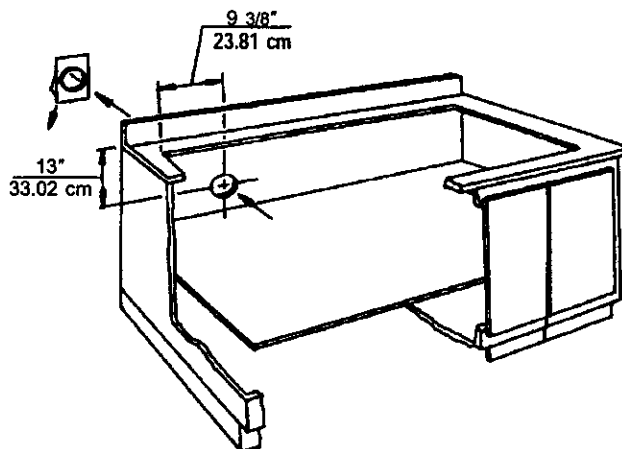
### DIMENSIONS SHOWN IN BOTH INCHES AND CENTIMETERS

\*Blower may be rotated for horizontal or vertical direction by loosening nuts around blower inlet. Accessible inside ventilation chamber.



**NOTICE TO INSTALLER:** Leave these instructions with the appliance.

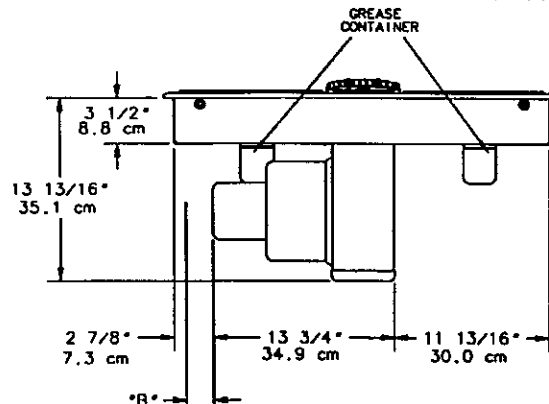
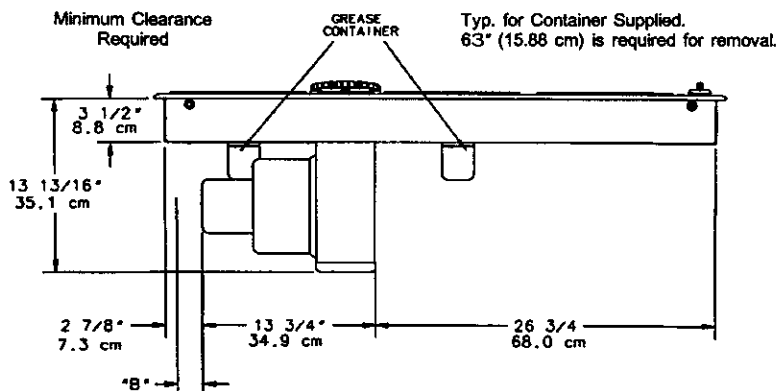
**NOTICE TO CONSUMER:** Retain these instructions for future reference.



MODELS	A	INCHES	CM
JED8130, JED8230	Double Bay	29 ± 1/16	73.66
JED8345	Triple Bay	43 1/4 ± 1/16	109.86 ± .16

#### MODEL SERIES: JED8345 TRIPLE BAY

#### MODEL SERIES: JED8130 & JED8230 DOUBLE BAY



ONLY MODELS WITH GRILLING FEATURE HAVE BEEN ILLUSTRATED

### INSTRUCTIONS TO INSTALLER

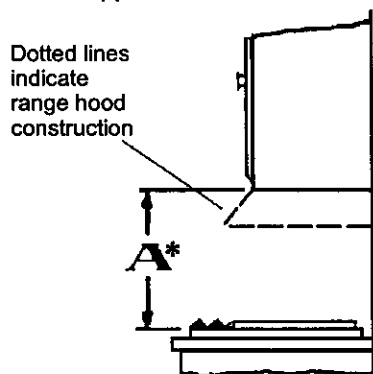
- S Dimension "B" - Provide 2" min. (5.08 cm) cabinet clearance to motor for cooling purpose.
- S **Installer** - Where possible, 6" (15.24 cm) is recommended for motor/blower service.
- S Side Clearance - Grill models installed near a side wall must allow a minimum clearance of 6" (15.24 cm) for maximum performance.
- S Electrical Hook UP - The unit should be properly circuit protected and wired according to local electrical codes. See electrical wiring information on back. Unit power requirements are located on the data plate.
- S \*\* Access must be provided to remove and empty grease container(s).

**8101P351-60**  
(12-00-00)

## Installing Cabinetry Over Your Jenn-Air Grill

A\* = 30" (76.2 cm) minimum clearance between the top of the cooking platform and the bottom of an unprotected wood or metal cabinet.

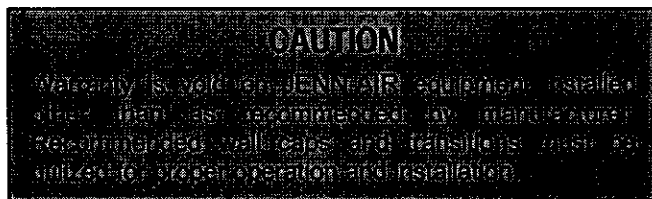
A\* = 24" (60.96 cm) minimum clearance when bottom of wood or metal cabinet is protected by not less than 1/4" (0.635 cm) FLAME RETARDANT millboard covered with no less than no. 28 MSG sheet steel, 0.015" (0.038 cm) stainless steel, 0.024" (0.061 cm) aluminum or copper.



- \* To eliminate the risk of burns or fire by reaching over heated surface units, cabinet storage space located above the surface units should be avoided. If cabinet storage is to be provided, the risk can be reduced by installing a range hood that projects horizontally a minimum of 5 inches beyond the bottom of the cabinets.

## Installer Installation Suggestions

1. Chamfer all exposed edges of decorative laminate to prevent damage from chipping.
2. Radius corners of cutout and file to insure smooth edges and prevent corner cracking. Recommend 1/4" or 3/8" diameter drill in each corner.
3. Rough edges, inside corners which have not been rounded and forced fits can contribute to cracking of the counter top laminate.
4. Countertop must be supported within 3" of cutout.



## Electrical Wiring Information

The neutral of this unit is grounded to the frame through the green grounding wire. If local conditions do not permit grounding of the neutral, untwist or disconnect the green wire and connect the green wire to ground in accordance with local codes. Connect the white neutral to the service neutral.

## Proper Electric Supply

You must provide an adequate electrical supply system as required for your cooktop. All wire connections must be in accordance with local codes and properly insulated. Check with local utility for governing electrical codes and ordinances. In the absence of local electrical codes, the National Electrical Code, NFPA No. 70, governing electric range installations must be followed. A copy of the National Electrical Code, NFPA No. 70, can be obtained by writing to:

**NATIONAL FIRE PROTECTION ASSOC.**  
 Batterymarch Park  
 Quincy, Massachusetts 02269

A three-wire, single phase, A.C. 120/240 volt 60 cycle electrical system (properly circuit protected to meet Local Codes of NFPA No. 70) must be provided. Unit must be properly grounded in accordance with local wiring code. The chart below recommends the minimum circuit protector and wire size if the appliance is the only unit on the circuit. If smaller sizes of wire are used, the unit efficiency will be reduced and a fire hazard may be created. It is advisable that the electrical wiring and hookup be accomplished by a competent electrician.

<b>RECOMMENDED MINIMUM</b>			
K.W. RATING ON SERIAL PLATE	CIRCUIT PROTECTION IN AMPERES	WIRE SIZE, AWG	REMOVE KNOCKOUT
0 - 4.9	20	12	NO
5.0 - 6.9	30	10	NO
7.0 - 9.9	40	8	NO
10.0 - 11.9	50	8	**YES
12.0 - 14.9	60	6	**YES

**SAVE FOR LOCAL ELECTRICAL INSPECTOR'S USE**