

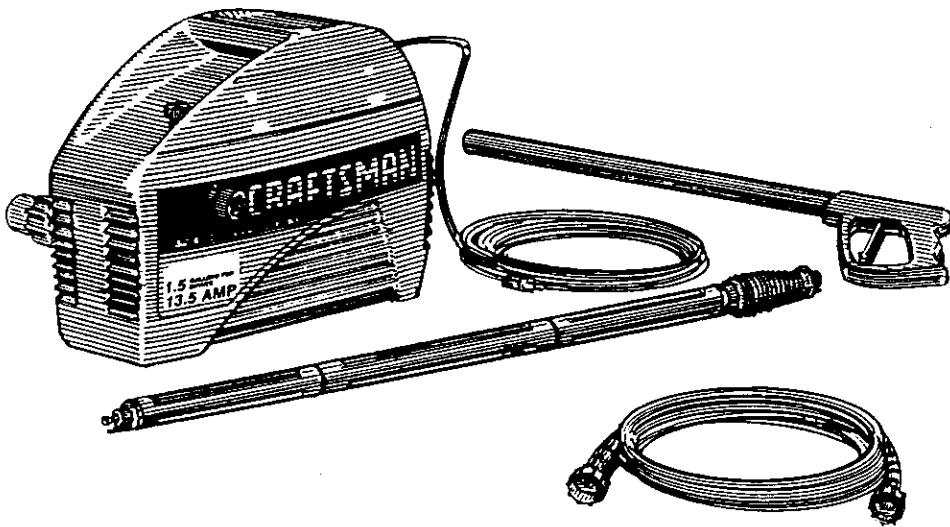
SEARS Owner's Manual

CRAFTSMAN[®]

1250 PSI 1.5 GPM
DOUBLE INSULATED

ELECTRIC HIGH PRESSURE WASHER

Model No.
580-677130



CAUTION: Before using this product, read this manual and follow all Safety Rules and Operating Instructions.

SEARS CANADA, Inc., Toronto, Ontario M5B 2B8

Part No. B1245 Draft 1 (2/27/97)

SAFETY

ASSEMBLY

OPERATION

MAINTENANCE

PARTS LIST

TABLE OF CONTENTS

SAFETY RULES	2-3	SERVICE AND ADJUSTMENTS	9
ASSEMBLY	4	STORAGE	9
OPERATION	5-8	TROUBLESHOOTING	10
MAINTENANCE	8	REPAIR PARTS	11-13
PRODUCT SPECIFICATIONS	8	HOW TO ORDER PARTS	BACK PAGE

LIMITED ONE YEAR WARRANTY ON CRAFTSMAN ELECTRIC PRESSURE WASHER

For one year from the date of purchase, when this Craftsman High Pressure Washer is maintained and operated according to the instructions in the owner's manual, Sears will repair, free of charge, any defect in material and workmanship.

If this washer is used for commercial purposes, this warranty applies for only 90 days from the date of purchase. If this high pressure washer is used for rental purposes, this warranty applies for only 30 days after date of purchase.

This warranty does not cover:

- Repairs necessary because of operator abuse or negligence, including damage resulting from no water being supplied to pump or failure to maintain the equipment according to the instructions contained in the owner's manual.

WARRANTY SERVICE IS AVAILABLE BY RETURNING THE HIGH PRESSURE WASHER TO THE NEAREST SEARS STORE OR OTHER CRAFTSMAN OUTLET CANADA.

This warranty gives you specific legal rights and you may also have other rights, which vary from state to state.

SEARS CANADA, Inc., Toronto, Ontario M5B 2B8

SAFETY RULES

Save these instructions



CAUTION: Before using this product, read this manual and follow all Safety Rules and Operating Instructions.

WARNING

RISK OF ELECTROCUTION

- Inspect cord before every use. Do not use if cord is damaged.
- Keep all connections dry and off the ground.
- Do not touch plug with wet hands.
- Double-insulated – When servicing, use only identical replacement parts.
- This product shall only be connected to a power supply receptacle protected by a Ground Fault Circuit Interrupter (GFCI).
- Read instruction manual before using

WARNING

When using this product, basic precautions should always be followed, including the following:

WARNING

To reduce the risk of injury, close supervision is necessary when product is used near children.

- Know how to stop the product and bleed the pressure quickly. Be thoroughly familiar with controls.
- Stay alert. Watch what you are doing.
- Do not operate the product when fatigued or under the influence of alcohol or drugs.
- Keep operating area clear of all persons.

WARNING

Risk of injury or injection to persons – Do not discharge stream at persons.

- High pressure hose can develop leaks from wear, kinking, abuse, etc. Water spraying from a leak is capable of injecting material into skin. Do not point the pressure washer spray at people or animals.
- Do not overreach or stand on unstable support. Keep good footing and balance at all times.
- Follow the maintenance instructions specified in the manual.
- This product shall only be connected to a power supply receptacle protected by a Ground Fault Circuit Interrupter (GFCI). This is done to comply with National Electrical Code (NFPA 70) and to provide additional protection from risk of electrical shock.

TRAINING:

- Locate this pressure washer in areas away from combustible materials, combustible fumes or dust.
- Some chemicals or detergents may be harmful if inhaled or ingested, causing severe nausea, fainting or poisoning. The harmful elements may cause property damage or severe injury.
- Do not allow CHILDREN to operate the Pressure Washer at any time.

PREPARATION:

- Before starting the Pressure Washer in cold weather, check all parts of the equipment and be sure ice has not formed there.
- Units with broken or missing parts, or without protective housing or covers should NEVER be operated.

OPERATION:**⚠ WARNING****Do not spray flammable liquids.**

- High pressure stream of water that this equipment produces can pierce skin and its underlying tissues, leading to serious injury and possible amputation.
- Never aim the gun at people, animals or plants.
- For household use. For indoor or outdoor use.
- High pressure spray can cause paint chips or other particles to become airborne and fly at high speeds.
- Always wear eye protection when you use this equipment or when you are in vicinity where the equipment is in use.
- Operate the pressure at no more than the PSI fluid pressure rated for your pressure washer.
- Never move the machine by pulling on high pressure hose. Use the handle provided on the top of the unit.
- Use a respirator or mask whenever there is a chance that vapors may be inhaled. Read all instructions with the mask so you are certain the mask will provide the necessary protection against inhaling harmful vapors.
- High pressure spray may damage fragile items including glass. Do not point spray gun at glass when in the high pressure mode.
- Keep the hose connected to machine and the spray gun while the system is pressurized. Disconnecting the hose while the unit is pressurized is dangerous.

- Hold the spray gun firmly in your hand before you start the unit. Failure to do so could result in an injury from a whipping spray gun. Do not leave the spray gun unattended while the machine is running.
- Cleaning area should have adequate slopes and drainage to reduce possibility of a fall due to slippery surfaces.
- Keep water spray away from electric wiring or fatal electric shock may result.
- Do not by-pass any safety device on this machine.


MAINTENANCE AND STORAGE:

- Operate and store this unit on a stable surface.
- Inspect hose each time before using it. Check all hoses for cuts, leaks, abrasions or bulging of cover, or damage or movement of couplings. If any of these conditions exist, replace hose immediately. Never repair high pressure hose. Replace it with another hose that meets minimum pressure rating of your pressure washer.
- Store in a clean, dry area. Ideally, the unit should be stored in a frost-free room.

SERVICING OF A DOUBLE-INSULATED PRODUCT

In a double-insulated product, two systems of insulation are provided instead of grounding. No means of grounding is provided on a double-insulated product, nor should a means for grounding be added.

Servicing a double-insulated product requires extreme care and knowledge of the system and should be done only by qualified service personnel. Replacement parts for a double-insulated product must be identical to the parts they replace. Use only genuine replacement parts. A double-insulated product is marked with the words "DOUBLE INSULATION" or "DOUBLE INSULATED".

The symbol  may also be marked on the product.

EXTENSION CORDS

We do not recommend that you use an extension cord with this pressure washer. If, however, it is necessary for you to use an extension cord, then you must use only extension cords that are intended for outside use. These extension cords are identified by a marking "ACCEPTABLE FOR USE WITH OUTDOOR APPLIANCES; STORE INDOORS WHILE NOT IN USE."



LOOK FOR THIS SYMBOL TO POINT OUT IMPORTANT SAFETY PRECAUTIONS. IT MEANS "ATTENTION!!! BECOME ALERT!!! YOUR SAFETY IS INVOLVED."

ASSEMBLY

CARTON CONTENTS

The following parts are shipped loose with your pressure washer:

- Main Unit — pressure washer and electrical cord
- Parts Bag (which includes items listed below)
 - Quick-connect (male and female adaptors)
 - Product Introduction Video
 - Nozzle Cleaner Kit
- Box marked PARTS INSIDE (which includes items listed below)
 - Spray Gun
 - Wand Extension with Hi-Lo Adjustable Nozzle
 - High Pressure Hose

Become familiar with each piece before assembling the pressure washer. Check all contents against the illustration on Page 5. If any parts are missing or damaged, call the Pressure Washer Helpline at 1-800-222-3136.

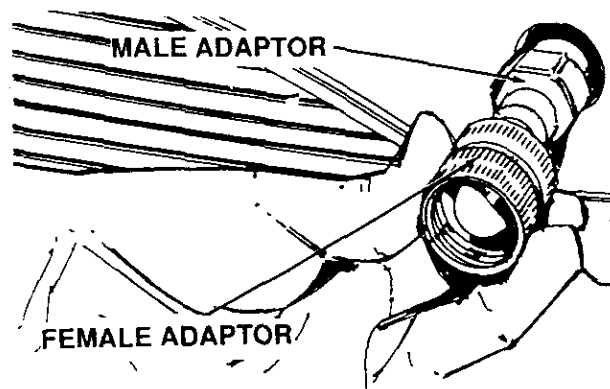
TO REMOVE PRESSURE WASHER FROM CARTON

- Remove parts bag.
- Remove box labeled PARTS INSIDE.
- Remove main unit with attached electrical cord.

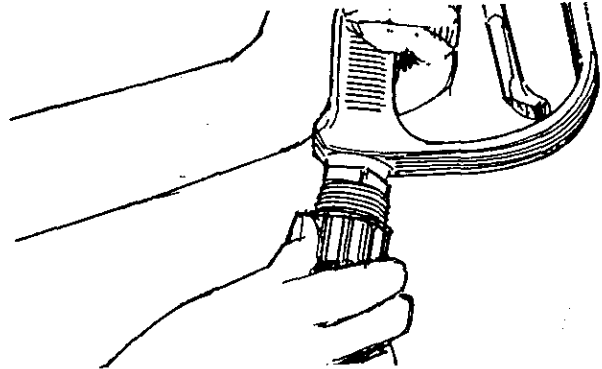
HOW TO SET UP YOUR PRESSURE WASHER

Note: Included with your pressure washer is a video cassette that demonstrates how to set up your pressure washer. If you have a video cassette recorder (VCR), you may want to view the video before assembling your unit.

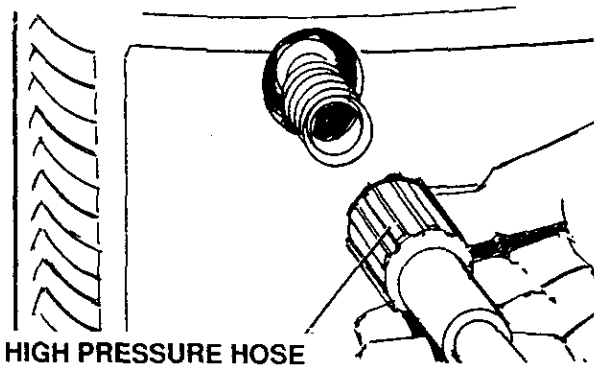
Included with this unit is a quick-connect fitting that you must attach to the water inlet. You can install the male connector end by hand but you may need to use an adjustable wrench to tighten it. Check the screen on the female adaptor. Be sure it is clean and check for holes. If you see any holes in the screen, do not use that adaptor.



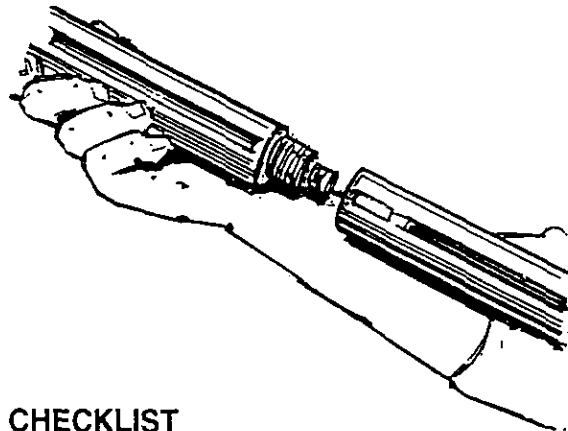
- Unwind the high pressure hose and attach it to spray gun.



- Attach the high pressure hose to the high pressure outlet and tighten by hand.



- Attach adjustable nozzle extension to spray gun by inserting threaded end of extension into end of spray gun and tightening the extension securely by hand. The extension will click when it is in place properly.



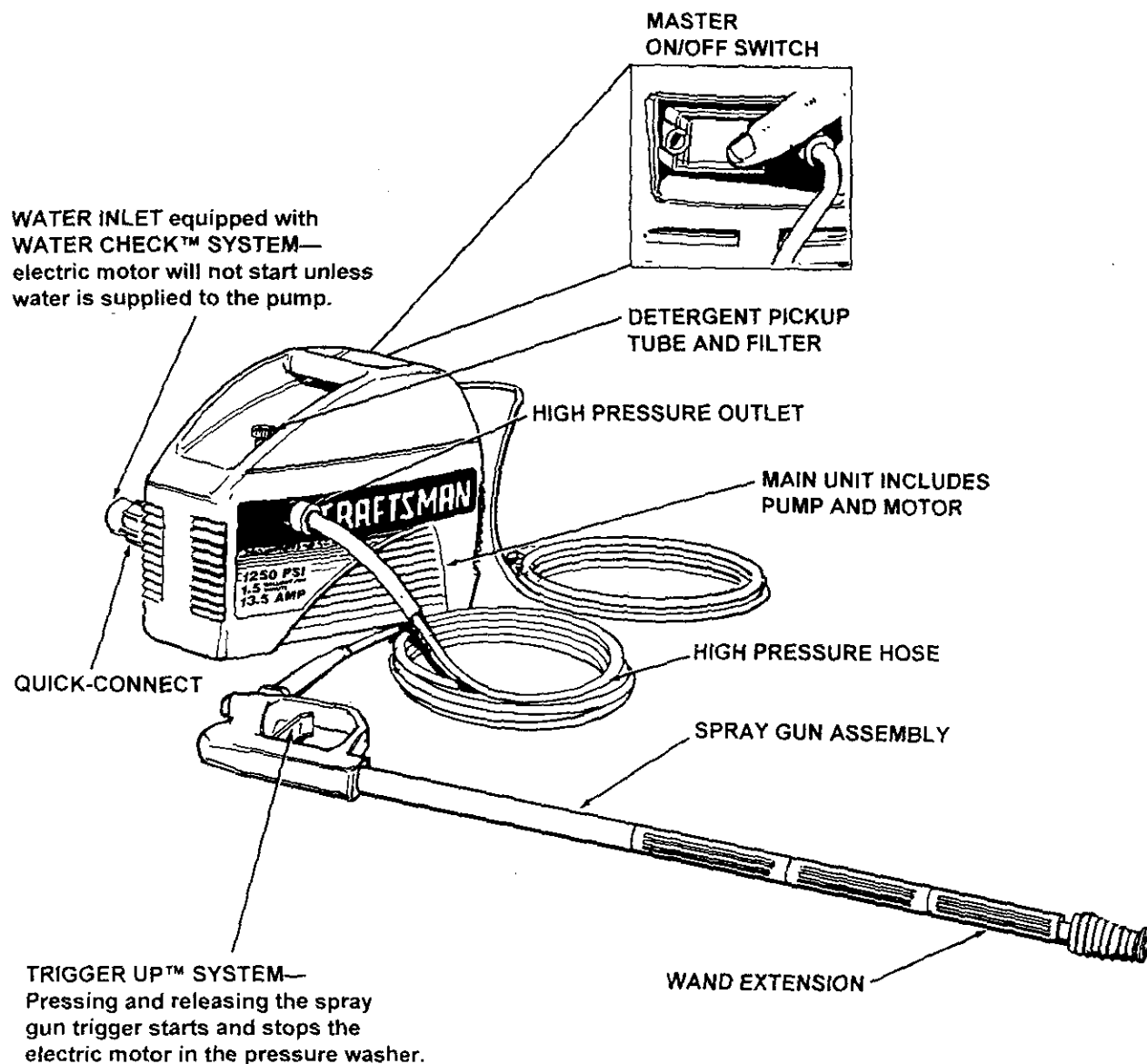
CHECKLIST

- Check for proper hose connections (high pressure and water supply) and for tight connections and that there are no kinks, cuts, or damage to the high pressure hose.
- Provide proper water supply (not to exceed 104°F).
- Be sure to read "Safety Rules" and "Operation" sections before using the pressure washer.

OPERATION

KNOW YOUR HIGH PRESSURE WASHER

READ THIS OWNER'S MANUAL AND SAFETY RULES BEFORE OPERATING YOUR HIGH PRESSURE WASHER. Compare the illustrations with your high pressure washer to familiarize yourself with the locations of various controls and adjustments. Save this manual for future reference.



SPRAY GUN ASSEMBLY – Controls the application of water onto cleaning surface with trigger device. Includes safety latch.

DETERGENT PICKUP TUBE AND FILTER – Mixes water and detergent in outlet water flow.

HIGH PRESSURE OUTLET – Connection for high pressure hose.

MASTER ON-OFF SWITCH – This switch ONLY enables the Trigger Up™ system to function.

QUICK-CONNECT – Easy connection for intake water supply.

TRIGGER UP™ SYSTEM – Pressing and releasing the spray gun trigger starts and stops the electric motor in the pressure washer.

WATER CHECK™ SYSTEM – Electric motor will not start unless water is supplied to the pump.

HOW TO USE YOUR WASHER

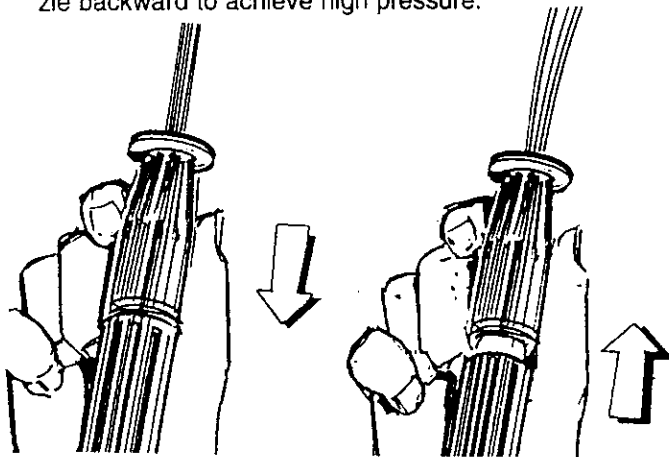
If you have any problems operating your pressure washer, please call the pressure washer helpline at 1-800-222-3136.

Note: Included with your pressure washer is a video cassette that demonstrates how to operate your pressure washer. If you have a video cassette recorder (VCR), you may want to view the video before assembling your unit.

HOW TO USE ADJUSTABLE NOZZLE

With the adjustable nozzle you can adjust the spray pattern to be either low pressure stream or high pressure stream. Twisting the nozzle adjusts the spray from a narrow spray pattern to a fan spray pattern.

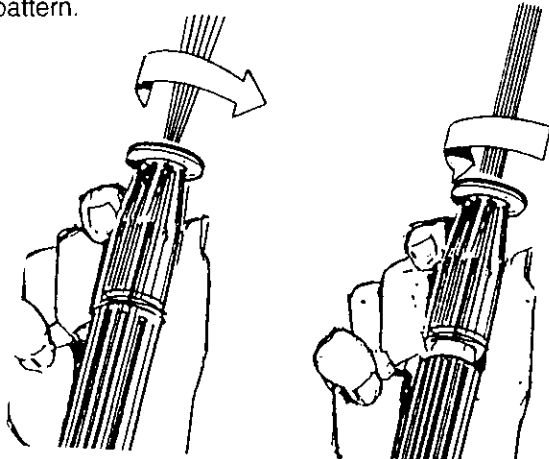
- Slide the nozzle attachment forward when you wish to adjust the spray to low pressure mode. Slide the nozzle backward to achieve high pressure.



NOZZLE IN HIGH PRESSURE MODE

PUSH NOZZLE FORWARD FOR LOW PRESSURE MODE AND DETERGENT APPLICATION

- Twisting the nozzle adjusts the spray pattern from a narrow stream to an expanded stream.
- Point the nozzle toward the ground and test the spray pattern.



TWIST NOZZLE FOR FAN PATTERN

TWIST NOZZLE FOR NARROW SPRAY PATTERN

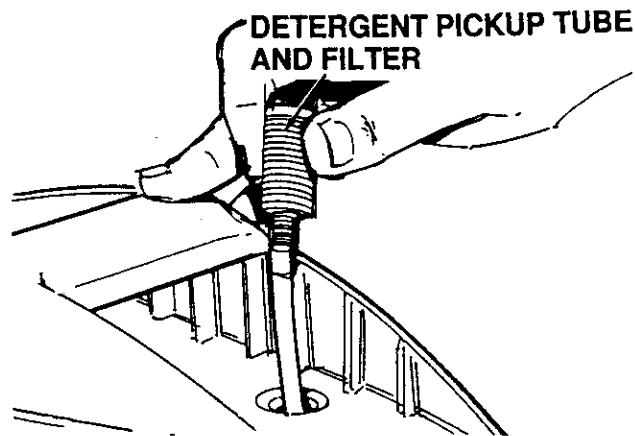
APPLYING DETERGENT AND CLEANING WITH ADJUSTABLE NOZZLE

IMPORTANT: Use soaps designed specifically for pressure washers. Household detergents could damage the pump.

To apply detergent follow these steps:

- Prepare the detergent solution as required by your job.
- Place the small filter connected to the detergent pickup tube into the detergent container.

Note: The first step involves applying an appropriate detergent/solvent solution to penetrate and loosen grime.



The detergent is applied at low pressure to avoid splashing, overspraying and waste. Leave the solution on surface for 3 to 5 minutes to allow solution to work.

Note: The second step involves cleaning the surface you have prepared with the pressure washer and then rinsing it clean.

- Slide the adjustable nozzle forward to low pressure mode. Detergent cannot be applied with nozzle in high pressure position.
- Review the use of adjustable nozzles.
- Check that garden hose is connected to water inlet, check that high pressure hose is connected to spray gun and pump, turn ON water and start motor (see TO START THE WASHER).
- Apply detergent to a dry surface, starting from the bottom and working up.
- Allow the detergent to soak in between 3-5 minutes before washing and rinsing.
- For cleaning, start at lower portion of area to be washed and work upward, using long, even overlapping strokes.

RINSING WITH THE PRESSURE WASHER



WARNING Be extremely careful if you must use the pressure washer from ladder, scaffolding or any other relatively unstable location. Pressure in a running washer builds in the wand as you climb. When you press the trigger, the recoil from the initial spray could force you to fall, or if you are too close to the cleaning surface, high pressure could force you off a climbing apparatus.

- Slide nozzle sleeve rearward to high pressure mode and wait for detergent to clear. Detergent will not flow when in the high pressure mode.
- When detergent has cleared you may want to use the fan spray pattern for a more gentle rinsing action. Start at top of area to be rinsed, working down with same action as for cleaning.

You can also stop detergent from flowing by simply removing siphon from bottle.

Note: The high pressure mode is most effective when the tip of the wand is held between 8 to 24 inches from the surface being cleaned.

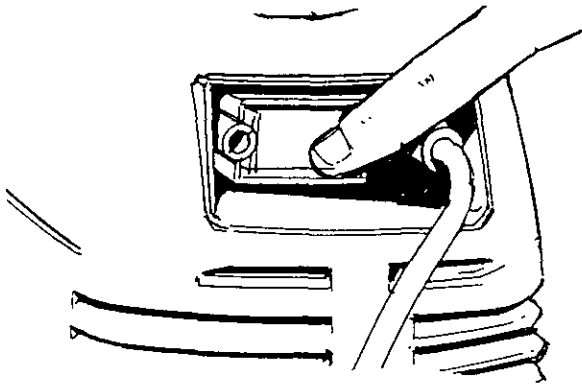
STOPPING YOUR PRESSURE WASHER

- The pressure washer motor is running only when the trigger is engaged. To stop the pressure washer, release trigger and the motor will shut OFF.



WARNING: Never leave the pressure washer unattended while it is plugged into an electrical outlet and while water is supplied to the machine.

- Press the Master ON/OFF switch so it is in the OFF position.



BEFORE STARTING PRESSURE WASHER

To operate the unit you will need the following:

- Electrical supply on an isolated circuit rated for 120 volts at 15 amps should only be connected to a receptacle that is protected by a ground fault circuit interruptor (GFCI).

EXTENSION CORDS

Sears recommends that you do not use an extension cord with this pressure washer.

If, however, you must use an extension cord for your application, use only an extension cord that is intended for outside use. This extension cord is identified by a marking "ACCEPTABLE FOR USE WITH OUTDOOR APPLIANCES; STORE INDOORS WHILE NOT IN USE."

If using an extension cord, observe the following specifications:

CABLE LENGTH	WIRE GAUGE
Up to 25 feet (8m)	14 AWG
50 feet (15m)	12 AWG

GROUND FAULT PROTECTION



DANGER Improper connection of the equipment-grounding conductor can result in electrocution. Check with a qualified electrician if you are in doubt as to whether the outlet is properly grounded. Do not modify the plug provided with the machine if it will not fit the outlet. Have a proper outlet installed by a qualified electrician.



WARNING: To reduce risk of electrocution, keep all connections dry and off the ground. DO NOT touch plug with wet hands.

To comply with the National Electrical Code (NFPA 70), and to provide additional protection from the risk of electric shock, this pressure washer should only be connected to a receptacle that is protected by a ground fault circuit interruptor (GFCI).

TO TURN ON WASHER



WARNING: To reduce risk of electrocution, keep all connections dry and off the ground. DO NOT touch plug with wet hands.



WARNING: Never adjust spray pattern when water is spraying. Never put hands in front of spray nozzle to adjust spray pattern.

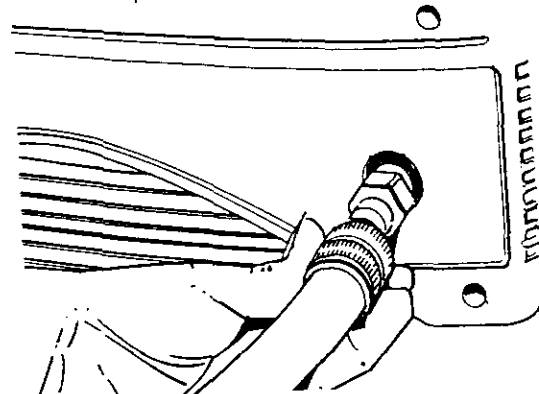


CAUTION: Gun kicks back. Use both hands.



WARNING: Risk of injury — Do not discharge stream at persons.

- Plug in your high pressure washer.
- Check that high pressure hose is attached to pump outlet.
- Remove the female quick-connect, attach it to the garden hose of your water supply and then connect water supply to pump inlet (male quick-connect). Push until you hear the quick-connect click.

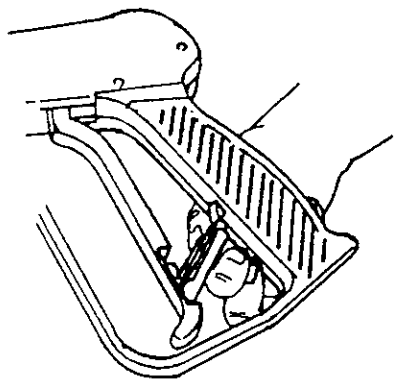


- Remove wand extension.
- Press the Master ON/OFF switch to the ON position.



CAUTION: You must be careful at this point. Anytime you squeeze the trigger, the motor will start and water will spray out of the gun.

- Turn ON water. Water supply should not exceed 104°F. Use a cold water source.
- Squeeze trigger on spray gun. Motor will start and force air from high pressure hose.
- Adjust the Safety Latch on spray gun to ON position. This disables the trigger so you cannot inadvertently actuate a spray stream.



- Reconnect the wand extension.
- Adjust nozzle for correct pressure, spray angle.
- Place Safety Latch in OFF position and squeeze trigger on spray gun. Motor will start and water should stream from the nozzle..

IMPORTANT: The pump will NOT run without the water supply connected and turned ON.

SIPHONING

We recommend that you DO NOT siphon your water supply. Connect only to household water supply.

TIPS

- Never leave the pressure washer unattended while it is plugged into an electrical outlet and while water is supplied to the machine.
- Never use the garden hose inlet to siphon detergent or wax.
- If you have the spray nozzle too far away, the cleaning will not be as effective.

MAINTENANCE

GENERAL RECOMMENDATIONS

The warranty of the high pressure washer does not cover items that have been subjected to operator abuse or negligence. To receive full value from the warranty, operator must maintain high pressure washer as instructed in this manual.

BEFORE EACH USE



DANGER: Water spraying from a leak is capable of injecting material into skin. NEVER repair a high pressure hose. Replace a bad hose with a hose that meets the minimum pressure rating of your pressure washer.

Check and Clean Quick-connect Screen: Remove quick-connect and examine inlet screen on the female connector. Clean if it is clogged or replace if it is torn.

Check High Pressure Hose: High pressure hose can develop leaks from wear, kinking, abuse. Inspect hose each time before using it. Check for cuts, leaks, abrasions or bulging of cover, or damage or movement of couplings. If any of these conditions exist, replace hose immediately.

Check Detergent Hose: Examine the filter on the detergent hose and clean if clogged. Hose should fit tightly on barbed fitting. Examine hose for leaks or tears. Replace the filter or hose if either is damaged.

Check Gun and Wand: Examine hose connection to gun and make sure it is secure. Test trigger by pressing it and making sure it springs back into place when you release it. Put safety latch in ON position and test trigger. You should not be able to press trigger.

PRODUCT SPECIFICATIONS

PRESSURE	1250 psi
FLOW RATE	1.5 GPM
DETERGENT MIX	Use undiluted detergent
WATER SUPPLY TEMPERATURE	Not to exceed 104°F
MOTOR	Brush Type
RATED VOLTAGE	120 volts
CURRENT	13.5 amps

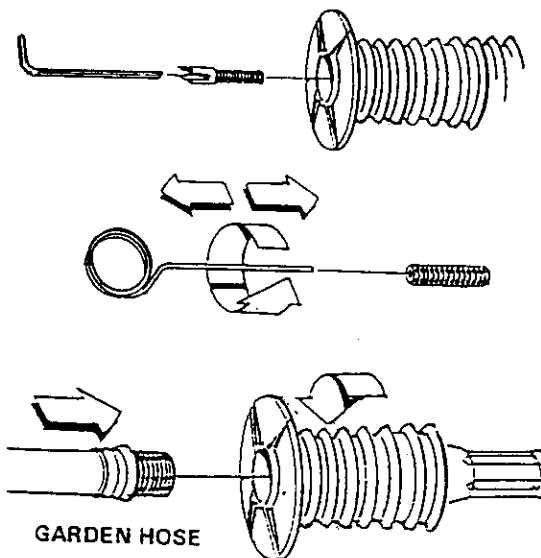
SERVICE AND ADJUSTMENTS

NOZZLE MAINTENANCE

If the nozzle becomes restricted or clogged with foreign materials, such as dirt, excessive pump pressure may develop. A partially clogged nozzle can cause a pulsing sensation during use. This generally is not a pump related problem, but rather a clogged or partially restricted nozzle.

If the nozzle becomes clogged or partially restricted, immediately clean the nozzle with the kit included with your pressure washer by following these instructions:

- Shut off the motor and turn off the water supply.
- Separate the wand from the gun.
- Adjust the nozzle to the stream position.
- Remove nozzle from the end of the wand using a 2mm or 5/64 allen wrench (like the one included in the kit).
- Use the wire included in the kit or a small paper clip to free the foreign materials clogging or restricting the nozzle.
- Remove additional debris by back flushing water supply through wand. Back flush between 30 to 60 seconds. Turn wand to stream spray and move nozzle from low to high pressure while flushing.
- Reinstall nozzle into wand. DO NOT overtighten.



- Reconnect wand extension to spray gun.
- Reconnect the water supply, turn ON the water, and start the motor.
- Test the pressure washer by operating with nozzle in the high and the low pressure positions.

STORAGE

Water should not remain in the unit for long periods of time. Sediments of minerals can deposit on pump parts and "freeze" pump action. After each time you are finished using your pressure washer, follow this procedure:

- Flush detergent hose by placing the injector filter into a pail of clear water while running Pressure Washer with nozzle in low pressure mode. Flush until you can see clear water flowing through hose.
- Switch the Master ON/OFF switch to OFF, unplug it, then remove all the hoses.
- Store the pressure washer and its components in such a way as to protect it from freezing.

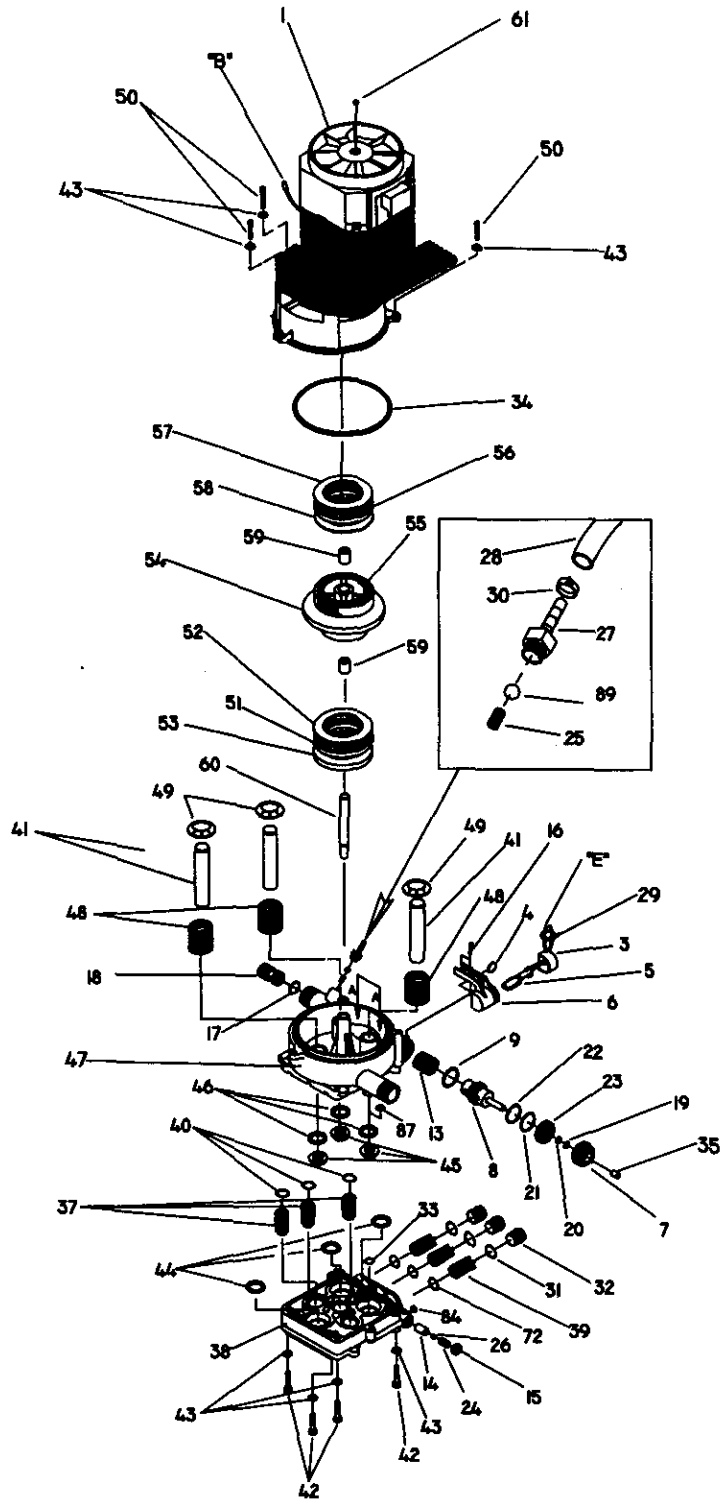
- Store in a clean, dry area. Ideally, the unit should be stored in a frost-free room.
- Coil the high pressure hose and inspect it for damage. Cuts in the hose or fraying of it could result in leaks and loss of pressure. Should any damage be found, replace the hose. DO NOT attempt to repair a damaged hose. Replace the hose with the genuine Craftsman part.
- Drain water from hose and properly store it to prevent cuts and general wear.

TROUBLESHOOTING

PROBLEM	CAUSE	CORRECTION
Pressure Washer will not start.	<ol style="list-style-type: none"> 1. No electrical power is available. 2. Motor overheats. 3. Trigger not open. 4. Electrical defect. 	<ol style="list-style-type: none"> 1. Check cable, plug, power socket and fuse/circuit breaker. 2. Length of extension cord is well beyond 50 feet. 3. Open trigger. 4. Contact Sears Service Department.
Pressure Washer does not come up to pressure.	<ol style="list-style-type: none"> 1. Spray gun is in low pressure mode. 2. Pump is sucking air. 3. Water filter clogged. 4. Pump not bled to remove air. 5. Pump is defective. 	<ol style="list-style-type: none"> 1. Adjust nozzle to high pressure mode. 2. Water hose must be 1/2" diameter Make sure water supply is ON. Make sure water supply is clean. Check all connections for leaks or blockage. 3. Clean filter. 4. Switch OFF washer, press trigger, switch ON washer while pressing trigger. Repeat if necessary. 5. Contact Sears Service Department.
High pressure spray is irregular.	<ol style="list-style-type: none"> 1. Nozzle or water supply is restricted. 2. Water supply inadequate. 	<ol style="list-style-type: none"> 1. Position nozzle completely in low pressure or high pressure position. Unplug unit and clean nozzle. 2. Turn ON water to full position. Operate washer in suction operation with open container.
No intake of cleaning agent.	<ol style="list-style-type: none"> 1. Wrong nozzle setting. 2. Nozzle clogged. 3. Suction filter clogged. 	<ol style="list-style-type: none"> 1. Adjust nozzle to low pressure mode. 2. Clean nozzle. 3. Clean filter in suction nozzle.

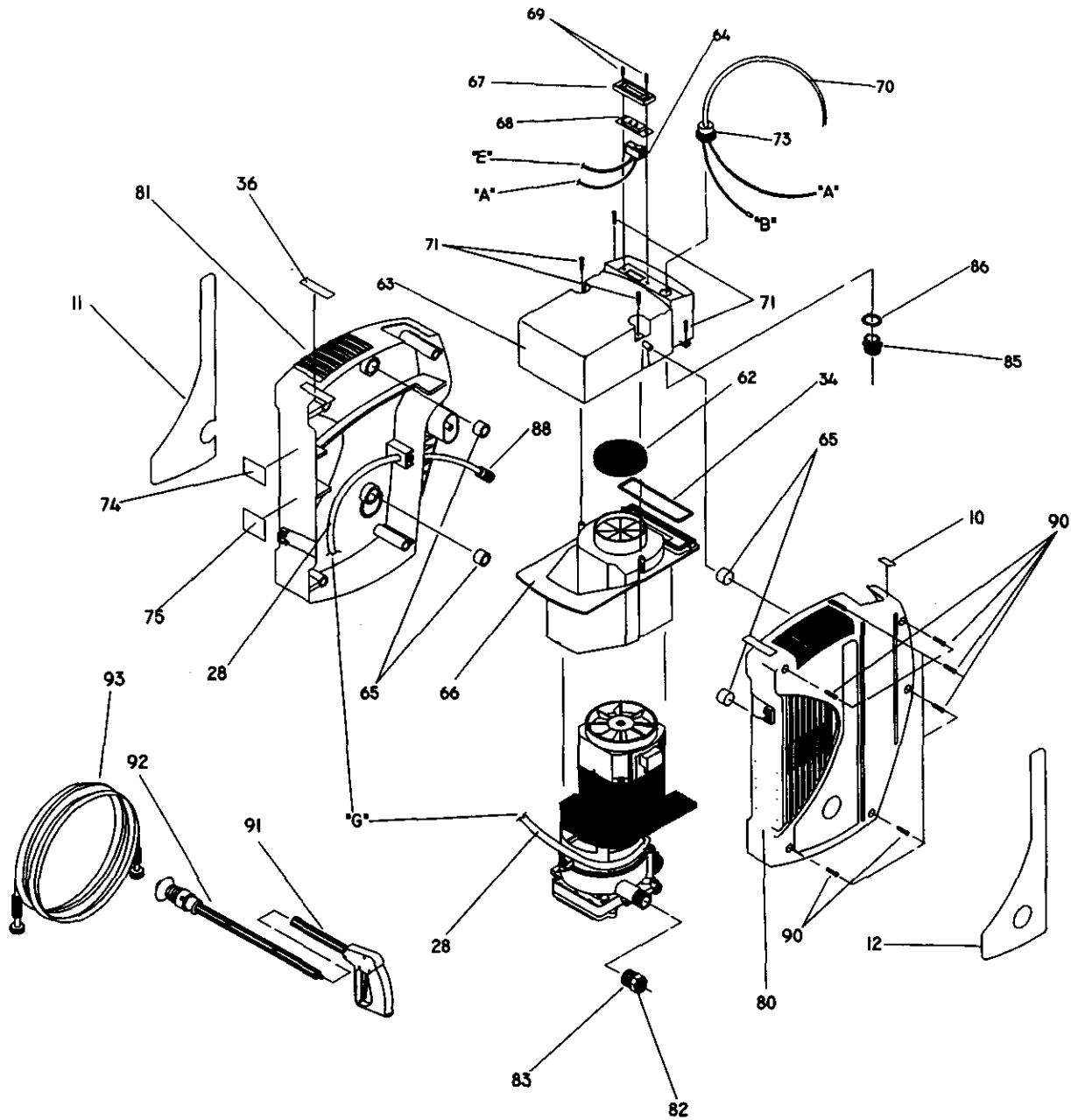
PARTS

CRAFTSMAN 1250 PSI HIGH PRESSURE WASHER 580-677130



PARTS

CRAFTSMAN 1250 PSI HIGH PRESSURE WASHER 580-677130



ITEM	PART NO.	DESCRIPTION
1	21144	Assy, Motor Complete (1 req.)
3	21054	Boot, Rubber (1 req.)
4	21055	Grommet, Rubber (1 req.)
5	20138	Switch, Auto (1 req.)
6	20928	Housing, Auto-switch (1 req.)
7	20218	Cap, Retainer (1 req.)
8	21342	Ass'y, Piston (1 req.)
9	21525	Wiper, Piston Bore (1 req.)
10	96462	Decal, Circuit (1 req.)

ITEM	PART NO.	DESCRIPTION
11	A1128	Decal, Unit (1 req.)
12	21318	Decal, Instructions (1 req.)
13	20212	Spring 15.08 x dia. 1.62CS x 22.3mm (1 req.)
14	A1132	Seat, Ball (1 req.)
15	A1131	Plug, Expansion (1 req.)
16	A1495	Taptite M4 - 0.7 x 10mm, Switch Mounting (2 req.)

PARTS

CRAFTSMAN 1250 PSI HIGH PRESSURE WASHER 580-677130

ITEM	PART NO.	DESCRIPTION	ITEM	PART NO.	DESCRIPTION
17	B1077	"O" Ring, Venturi (1 req.)	58	97823	Washer, Brg dia. 35 x 52 x 1mm (1 req.)
18	B1060	Venturi, Chem. Injector (1 req.)	59	97834	Bearing, Needle dia. 8 x 12 x 10mm (2 req.)
19	21124	Ring, Backup dia. 4.34 Id x 1.24 (1 req.)	60	97833	Shaft, Idler Axial Cam (1 req.)
20	21123	"O" Ring dia. 3.68 Id x 1.78 CS [.070"] (1 req.)	61	B1125	Nut, M5-0.8 LH Thread (1 req.)
21	21126	Ring, Backup dia. 26.0 ID (1 req.)	62	98806	Foam, Air In, Fan-end (1 req.)
22	21125	"O" Ring dia. 25.07 ID x 2.62 CS [.103"] (1 req.)	63	97893	Housing, Switch and Cord (1 req.)
23	20217	Stop, Piston Return (1 req.)	64	20984	Switch, Rocker 16A (1 req.)
24	A1130	Spring, Pop-off Valve (1 req.)	65	98801	Mount, Rubber (4 req.)
25	95380	Spring, Chem. Injector (1 req.)	66	97892	Cover, Motor (1 req.)
26	97852	Ball, dia. 3/16" Pop-off Valve (1 req.)	67	20985	Enclosure, Rocker Switch, Boot (1 req.)
27	A1575	Barb, Hose, Brass with nylon Insert (1 req.)	68	20986	Boot, Rocker Switch (1 req.)
28	A1040A	Hose, Chem (1 req.)	69	84543B	Plastite 3.5mm x 12mm (2 req.)
29	28739A	Tie Wrap (1 req.)	70	98805	Cord, Power (1 req.)
30	48031G	Hose Clamp, 3/16" (1 req.)	71	84358	Plastite #6-19 x .75mm (5 req.)
31	97840	"O" Ring, Hi-press Port dia. 15.6 x 1.78mm (3 req.)	72	97934	"O" Ring, Chk Valve dia. 12.4 x 1.78mm (3 req.)
32	97841	Cap, Check Valve (3 req.)	73	99349	Relief, Strain Cord (1 req.)
33	97837	"O" Ring, Hi-press Trans dia. 9.2 x 2.62mm (1 req.)	74	B1053	ETL Decal (1 req.)
34	97835	"O" Ring, Hsg Seal, dia. 82.2 x 2.62mm (2 req.)	75	B1052	Data Decal (1 req.)
35	B1026	Vinyl Cap (1 req.)	80	97694	Housing, Inlet (1 req.)
36	96307	Decal, 800 # (1 req.)	81	97695	Housing, Outlet (1 req.)
37	97838	Assy., Check Valve, Inlet (3 req.)	82	21781	Quick Disconnect, Male (1 req.)
38	A1111A	Head Pump (1 req.)	83	21782	Quick Disconnect, Female (1 req.)
39	97839	Assy., Check Valve, Outlet (3 req.)	84	76353A	Plug, Taper dia. 5.4 (1 req.)
40	97851	"O" Ring, Piston dia. 10.82 x 1.78mm (3 req.)	85	A1484	Lock Nut, Strain Relief (1 req.)
41	97832	Piston, dia. 15 x 65mm (3 req.)	86	A1485	Seal Ring, Strain Relief (1 req.)
42	40946	Bolt, SHCS M6- 1.0 x 35mm (4 req.)	87	97855	"O" Ring dia. 6.5 x 2.01mm (1 req.)
43	93873	Lockwasher, M6 Ribbed (7 req.)	88	A1041	Filter, Chem Hose (1 req.)
44	93667	Seal, Piston "U" Cup (3 req.)	89	95379	Ball, Chemical Injector (1 req.)
45	97831	Spacer, Pilot (3 req.)	90	99350	Screw #6 Plastite (5 req.)
46	93680	Seal, Oil-piston dia. 15 TC4 (3 req.)	91	97809	Spray Gun (1 req.)
47	20140	Housing, Piston (1 req.)	92	95602F	Wand Extension (1 req.)
48	99503	Spring, Piston Return (3 req.)	93	21779	High Pressure Hose (1 req.)
49	97830	Retainer, Piston Spring (3 req.)	94	B1236D	Nozzle, 1.15mm (1 req.)
50	97962	Bolt, SHCS M6-1.0 x 25mm (3 req.)			
51	97824A	Bearing, Needle dia. 40 x 60mm (1 req.)			
52	97826	Washer, Brg dia. 40 x 60 x 1mm (1 req.)			
53	97825	Washer, Brg dia. 36 x 60 x 6mm (1 req.)			
54	97716	Cam, Axial 4.3 Mm Stroke (1 req.)			
55	97829	Gear, Axial Cam (1 req.)			
56	97822	Brg Needle Thrust dia. 35 x 52mm (1 req.)			
57	20610	Washer, Brg dia. 35 x 55 x 3mm (1 req.)			

PARTS NOT ILLUSTRATED

B1245 Owner's Manual (1 req.)

OPTIONAL ACCESSORIES (not shown)

71 75199	Rotating Brush Kit
71 75189	Utility Brush Kit
71 75190	Broom Brush Kit
71 75184	Electric Turbo Nozzle
71 75187	Garden Hose Quick-connect Kit
71 75100	Multipurpose Cleaner
71 75101	Deck Wash
71 75102	Vehicle Wash
71 75103	Degreaser
71 75104	Spray Wax
71 75183	Multipurpose Storage Bracket
71 76477	Electric Cart

Dear Customer,

In manufacturing this product, many steps have been taken to provide you with the highest quality. Unfortunately, errors or omissions occasionally occur. In the event that you find a missing or defective part, please contact your nearest Sears store.

**SERVICE AND REPAIR PARTS
CALL 1-800-665-4455 ***

Keep this number handy should you require a service call or need to order repair parts.
If ordering parts make sure you have the name, make and model no. of the merchandise and the name and number of the part you wish to order.

*If calling locally, please use one of the following numbers:

- | | |
|----------------------|---------------------|
| Regina - 566-5124 | Montreal - 333-5740 |
| Toronto - 744-4900 | Halifax - 454-2444 |
| Kitchener - 894-7590 | Ottawa - 738-4440 |
| Vancouver - 420-8211 | |

If you have any suggestions that would help us to improve our assembly/operation instructions of this product, please write them down and mail to:

Sears Canada, Inc.
222 Jarvis Street
Toronto, Ontario
M5B 2B8

Attention: Buyer Dept. 671

Model No. _____

NAME: _____

ADDRESS: _____

POSTAL CODE: _____ PHONE #: _____

COMMENTS: _____
