

**MODEL MK-370
TILE SAW
OWNER'S MANUAL
PARTS LIST &
OPERATING
INSTRUCTIONS**



WARNING:

- FOR YOUR OWN SAFETY READ INSTRUCTION MANUAL BEFORE OPERATING SAW.
- WEAR EYE PROTECTION.
- USE SPLASH HOOD FOR EVERY OPERATION FOR WHICH IT CAN BE USED.
- DISCONNECT SAW BEFORE SERVICING, WHEN CHANGING CUTTING WHEELS, AND CLEANING.
- USE TOOL ONLY WITH SMOOTH EDGE CUTTING WHEELS FREE OF OPENINGS AND GROOVES.
- REPLACE DAMAGED CUTTING WHEEL BEFORE OPERATING.

PLEASE RECORD THE SERIAL NUMBER
(LOCATED ON THE COVER POST CASTING) OF
YOUR SAW IN THIS BLOCK.

SERIAL NUMBER

FOR YOUR WARRANTY TO BE EFFECTIVE,
COMPLETE THE WARRANTY CARD (INCLUDE
THE SERIAL NUMBER) AND MAIL IT IN AS
SOON AS POSSIBLE.

Manual Part No. 156760
Revision 8/99

MK-370 TILE SAW

Table of Contents

General Safety Instructions	pg 1-2
Safety Messages	
Hazard Symbols	
Damage Prevention Messages	
Safety Label Locations	
Saw Features	pg 2-3
Motor	
Cutting Head	
Water Recirculation System	
Unpacking and Preparation	pg 3
Initial Assembly	pg 3-5
Installing the Cutting Head	
Installing the Blade	
Installing the Water Pump	
Electrical Requirements	
Lockout Method	
Sawing Operations	pg 5-6
General Cutting Guidelines	
Table Markings	
Maintenance	pg 6
Trouble Shooting	pg 7
Optional Accessories	pg 7
Parts Listing	pg 8-9
Exploded View	pg. 8
How to Order Repair Parts	back cover
Returned Merchandise Policy	back cover

IMPORTANT SAFETY INSTRUCTIONS FOR THE MK-370 TILE SAW

For your safety, read all instructions!

These safety precautions should be followed at all times. Failure to follow these safety precautions could result in injury to yourself and others. Safety is a combination of operator common sense and alertness at all times when the saw is being used.

- KEEP GUARDS IN PLACE and in working order.
- REMOVE ADJUSTING KEYS AND WRENCHES. Form habit of checking to see that keys and adjusting wrenches are removed from tool before turning it on.
- KEEP WORK AREA CLEAN. Cluttered areas and benches invite accidents.
- DON'T USE IN DANGEROUS ENVIRONMENT. Don't use power tools in damp or wet locations, or expose them to rain. Keep work area well lighted.
- KEEP CHILDREN AWAY. All visitors should be kept safe distance from work area.
- MAKE WORKSHOP KID PROOF with padlocks, master switches, or by removing starter keys.
- DON'T FORCE TOOL. It will do the job better and safer at the rate for which it was designed.
- USE RIGHT TOOL. Don't force tool or attachment to do a job for which it was not designed.
- USE PROPER EXTENSION CORD. Make sure your extension cord is in good condition. When using an extension cord, be sure to use one heavy enough to carry the current your product will draw. An undersized cord will cause a drop in line voltage resulting in loss of power and overheating. Extension Cords Table 1 shows the correct size to use depending on cord length and name plate ampere rating. If in doubt, use the next heavier gage. The smaller the gage number, the heavier the cord.



• WEAR PROPER APPAREL. Do not wear loose clothing, gloves, neckties, rings, bracelets, or other jewelry which may get caught in moving parts. Nonslip footwear is recommended. Wear protective hair covering to contain long hair.



• ALWAYS USE SAFETY GLASSES. Also use face or dust mask if cutting operation is dusty. Everyday eyeglasses only have impact resistant lenses, they are NOT safety glasses.



• SECURE WORK. Use clamps or a vice to hold work when practical. It's safer than using your hand and it frees both hands to operate tool.

• DON'T OVERREACH. Keep proper footing and balance at all times.

• MAINTAIN TOOLS WITH CARE. Keep tools sharp and clean for best and safest performance. Follow instructions for lubricating and changing accessories.

• DISCONNECT TOOLS before servicing; when changing accessories, such as blades, bits, cutters, and the like.

• REDUCE THE RISK OF UNINTENTIONAL STARTING. Make sure switch is in off position before plugging in.

• USE RECOMMENDED ACCESSORIES. Consult the owner's manual for recommended accessories. The use of improper accessories may cause risk of injury to persons.

• NEVER STAND ON TOOL. Serious injury could occur if the tool is tipped or if the cutting tool is unintentionally contacted.

• CHECK DAMAGED PARTS. Before further use of the tool, a guard or other part that is damaged should be carefully checked to determine that it will operate properly and perform its intended function - check for alignment of moving parts, binding of moving parts, breakage of parts, mounting, and any other conditions that may affect its operation. A guard or other part that is damaged should be properly repaired or replaced.

• DIRECTION OF FEED. Feed work into a blade or cutter against the direction of rotation of the blade or cutter only.

• NEVER LEAVE TOOL RUNNING UNATTENDED. TURN POWER OFF. Don't leave tool until it comes to a complete stop.

• SAVE THESE INSTRUCTIONS.

Safety Messages

A safety message informs you about potential hazards that could hurt you or others. Each safety message is preceded by one of the three words: Danger, Warning, or Caution.



Danger

You WILL be KILLED or SERIOUSLY injured if you don't follow instructions.



Warning

You CAN be KILLED or SERIOUSLY injured if you don't follow instructions.



Caution

You CAN be injured if you don't follow instructions.

Additional information as to the nature of the hazard is provided by the following Hazard Symbols which appear throughout the manual in conjunction with safety message alert symbols.

Hazard Symbols



⚠ Electrical Shock!

Never touch electrical wires or components while the motor is running. Exposed, frayed or worn electrical motor end/or water pump wiring can be sources of electrical shock which could cause severe injury or burns.



⚠ Accidental Starts!

Before plugging the equipment into an electrical outlet, ensure that the ON/OFF switch is in the "OFF" position to prevent accidental starting. Unplug unit before performing any service operation.



⚠ Rotating or Moving Parts!

Keep hands, feet, hair, and clothing away from all moving parts to prevent injury. Never operate the motor with covers, shrouds, or guards removed.

damage prevention messages

Other important messages that are designed to help prevent damage to your MK Diamond 370 tile saw, other property, or the environment are preceded by the word, "notice."

notice Your MK-370 Tile Saw or other property could be damaged if you don't follow instructions.

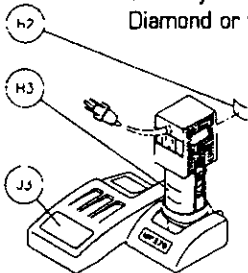
California Proposition 65 Message

⚠ Warning

Sawing and drilling generates dust. Excessive airborne particles may cause irritation to eyes, skin and respiratory tract. To avoid breathing impairment always employ dust controls and protection suitable to the material being sawed or drilled. In accordance with OSHA (29 CFR Part 1910.1200), Diamond Blades improperly used are dangerous. Comply with American National Standards Institute Safety Code B7.1 and Occupational Safety and Health Act covering: Speed, Safety Guards, Flanges, Mounting Procedures, General Operating Rules, Handling, Storage and General Machine Conditions.

Safety Label Locations

Safety labels are located according to the drawing below. The labels contain important safety information. Please read them carefully. These labels are considered a permanent part of your saw. If a label comes off or becomes hard to read, contact MK Diamond or your dealer for replacement.



Item	Location	Description	Part #
G5	Motor	General safety warnings	155806
G3	Motor	Receptacle warning label	154822
G2	Motor	GFCI Warning label	155678



370 TILE SAW

7 inch (178mm) blade capacity

The MK-370 Tile Saw is a versatile cutting machine designed to use diamond blades. Its function is to cut a variety of materials to include ceramics and certain types of stone. The MK-370 is compact and lightweight, and incorporates features found on larger professional models. This saw is engineered as a self-contained unit consisting of a powerful universal motor, removeable water reservoir and water recirculating system, and quality diamond blade. The motor operates on standard 115V current, and the water pump is conveniently energized by the motor.

Motor

The MK-370 features a powerful right angle drive universal motor with the following specifications:

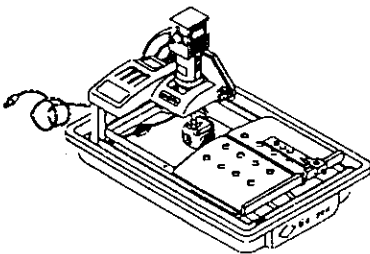
115V 50/60Hz 1/3 Horsepower
6.0 Amp 5,500 RPM

Maintenance free sealed pinion shaft and gear assembly

The heavy-duty pinion shaft and gear assembly are permanently lubricated and sealed within the gear box.

Cutting Head

The 7 inch (178mm) blade capacity yields a depth of cut of 1-3/4". The hinged blade guard allows easy blade changes.



Saw Features

Table

Built of rugged composite material, the one-piece table allows for the cutting of 12" (305mm) tile and diagonally cuts 8" (203mm).

Frame

The structural steel frame of the MK-370 provides high strength and rigidity, while keeping weight to a minimum. The MK-370 is very portable at 29 pounds and an overall size of 28"L x 21"W x 25"H.

Water System

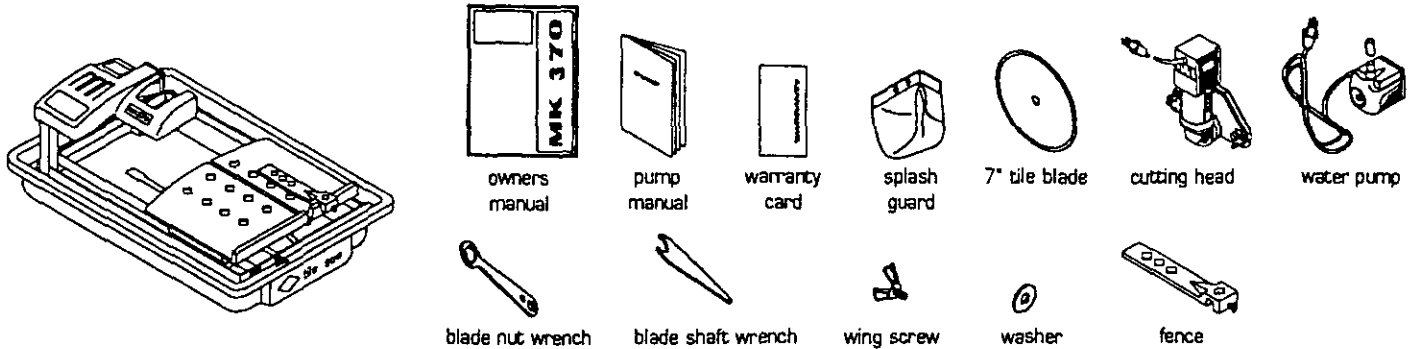
The water system of the MK-370 consists of a thermoplastic water reservoir and a submersible recirculating pump that connects to water tubes in the blade guard in order to provide a continuous supply of water to both sides of the blade. The water reservoir will not rust or peel and is easy to clean.

Unpacking and Preparation

Carefully open carton. Remove the accessory pack. Lift the saw out of the carton by the pan, and place onto a level work surface. Open the accessory pack, and check each item with the contents list and illustration below, making certain that all items are accounted for and in good condition before discarding any packing material. If there are any missing or damaged parts, call our toll free number 1-(800)-421-5830 or (310) 539-5221 for instructions before proceeding with the assembly.

Contents of carton: Saw Frame Assembly and Accessory Pack

Accessory Pack contains:



Initial Assembly



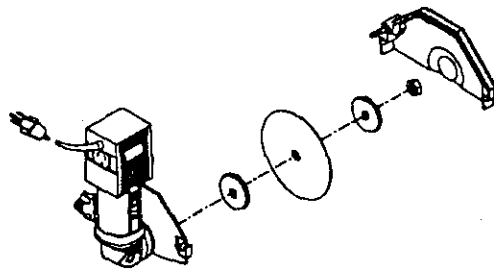
Warning

For your own safety and protection, do not attempt to operate this saw until it is completely assembled and installed according to the instructions. Read the instructions carefully and understand the capabilities of the saw. Loosen the davies knob (part# B3) and wing nut (part# B5) on the blade guard. Raise the blade guard to its highest position and retighten the wing nut. Place flanges ② and diamond blade ① onto

Installing the Cutting Head

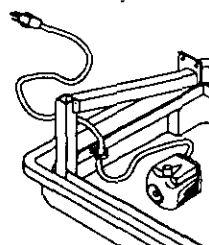
Remove the three screws (part# G4) from the mounting flange of the frame assembly and set them aside. From the Cutting Head, loosen the davies knob (part# B3) and remove the wing nut (part# B5) on the blade guard. Remove the blade guard and set it aside. With the Cutting Head, align the three screw holes of its casting (part# G1) with the mounting screws through the casting into the saw frame and retighten. Reinstall the blade guard and connect the vinyl water hose to the brass fitting located on the blade guard.

Installing the Blade



Loosen the davies knob (part# B3) and wing nut (part# B5) on the blade guard. Raise the blade guard to its highest position and retighten the wing nut. Loosen and remove the blade shaft nut (part# H6) & outside blade flanges (part# H5) and set them aside. Place the diamond blade onto the motor shaft against the inside flange. Ensure that the rotation arrow (stamped onto the steel core of the blade) points "counter-clockwise" when viewed from the blade side of the saw. Place the outer blade flange against the blade and tighten the blade shaft nut onto the threaded shaft. **DO NOT OVERTIGHTEN.** reposition the blade guard and tighten fittings. Attach splash guard to back of blade guard with wingscrew and washer provided.

Installing the Water Pump



The end of the water hose (lying in the water pan) has a 3/8" diameter vinyl sleeve attached. Affix this 3/8" sleeve onto the spout of the water pump, using the plastic adapter provided. Place the pump *anywhere* in the water pan. Route the water pump power cord through the slot in the side of the table as shown. Fill the pan with clean water, and ensure that the water level is above the intake port of the pump. It is very important to keep the pump's intake port under water during operations. Any air introduced to the pump could cause an interruption of water flow. This pump is fully submersible, and you may wish to place it adjacent to your saw in a bucket of water to provide a continuous flow of clean water to your blade (this helps extend the life of both blade and pump). Connect the plug end of the water pump into the water pump receptacle located on the motor. The pump is activated by the ON/Off switch on the electric motor.



Warning

This pump requires the use of a Ground Fault Circuit Interrupter. To reduce risk of electric shock, connect the saw to a Ground Fault Circuit Interrupter outlet when operating the saw with the pump plugged into the 3-pole receptacle on motor. See the pump manual and informational tags enclosed separately for all pump information.



Caution

Shock Hazard. For replacement pump, use only identical pump, MK model PES-100, part# 155987.

notice

Do not run the pump dry. Also be sure to disconnect and remove the water pump when cutting dry.

Electrical Requirements and Grounding Instructions

The MK-370 tile saw is wired for 115V, single phase operation, and draws 5.3 amps at 115V. This is not a large load, however if the machine is operated on any circuit that is already close to it's capacity, the circuit breaker may be tripped. If this occurs, eliminate other loads from the circuit. A separate circuit protected by a 20 amp breaker is ideal. If other loads do not exist and power failure still occurs, have the circuit inspected by a qualified electrician. If a generator is used, use one rated at 3.5Kw minimum.



Warning

This tool must be grounded. In the event of a malfunction or breakdown, grounding provides a path of least resistance for electric current to reduce the risk of electric shock. This tool is equipped with an electric cord having an equipment-grounding conductor and a grounding plug. The plug must be plugged into a matching outlet that is properly installed and grounded in accordance with all local codes and ordinances.

- Do not modify the plug provided - if it will not fit the outlet, have the proper outlet installed by a qualified electrician.
- Improper connection of the equipment - grounding conductor can result in a risk of electric shock. The conductor with the insulation having an outer surface that is green, with or without yellow stripes, is the equipment grounding conductor. If repair or replacement of the electric cord or plug is necessary, do not connect the equipment - grounding conductor to a live terminal.
- Check with a qualified electrician or service personnel if the grounding instructions are not completely understood, or if in doubt as to whether the tool is properly grounded.
- Use only 3-wire extension cords that have 3-prong grounding plugs and 3-pole receptacles that accept the tool's plug.
- Repair or replace damaged or worn cord immediately. See Table 1 for proper extension cord gage requirements.



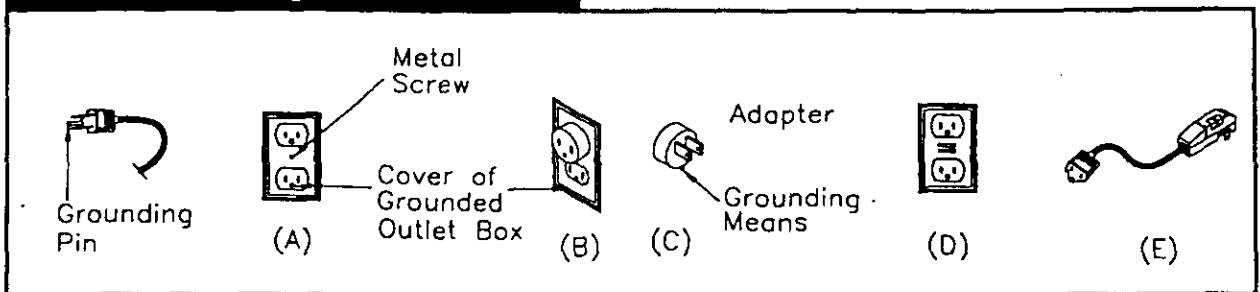
Warning

This tool is intended for use on a circuit that has an outlet that looks like the one illustrated in Sketch A in Figure 1. The tool has a grounding plug that looks like the plug illustrated in Sketch A in Figure 1. A temporary adapter, which looks like the adapter illustrated in Sketches B and C, may be used to connect this plug to a 2-pole receptacle as shown in Sketch B if a properly grounded outlet is not available. The temporary adapter should be used only when a properly grounded outlet is not available. The temporary adapter should be used only until a properly grounded outlet can be installed by a qualified electrician. The green-colored rigid ear, lug, and the like, extending from the adapter must be connected to a permanent ground such as a properly grounded outlet box.

Note Use of a temporary adapter is not permitted in Canada.

Additionally, the water pump requires the use of a Ground Fault Circuit Interrupter. Therefore, when using the water pump plugged into the water pump receptacle, this tool must be plugged into a properly installed and grounded Ground Fault Circuit Interrupter outlet, like the one illustrated in Sketch D in Figure 1. If a Ground Fault Circuit Interrupter outlet is not available, MK Diamond has available, as an accessory item, a plug - in Ground Fault Circuit Interrupter that may be plugged into a properly installed and grounded 3-pole outlet. See Sketch E in Figure 1.

Figure 1
Grounding methods



Extension Cords

Use only extension cords that are intended for outdoor use. These extension cords are identified by a marking of, "Acceptable for use with outdoor appliances; store indoors while not in use." Use only extension cords having an electrical rating not less than the rating of the product. Do not use damaged extension cords, do not "yank" on any cord to disconnect it from the power supply. Keep cord away from heat and sharp edges. Always disconnect the extension cord from the receptacle before disconnecting the product from the extension cord.

Warning

To reduce the risk of electrocution, keep all connections dry and off the ground. Do not touch plug with wet hands.

Ground Fault Circuit Interrupter (GFCI) protection should be provided on the circuit(s) or outlet(s) to be used for the tile saw. Receptacles are available having built-in GFCI protection and may be used for this measure of safety.

Table 1
Minimum gage for cord

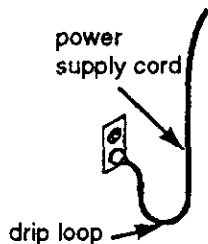
Ampere Rating		Total length of cord in feet					
		120V	240V	25 ft.	50 ft.	100 ft.	150 ft.
more than	not more than	—	—	50 ft.	100 ft.	200 ft.	300 ft.
				AWG			
0	6			18	16	16	14
6	10			18	16	14	12
10	12			16	16	14	12
12	16			14	12	not recommended	

Notice Use of undersize extension cords results in low voltage to the motor, which can result in motor burnout and premature failure. MK Diamond warns that equipment returned to us, showing signs of being run in a low voltage condition through the use of undersized extension cords, will be repaired or replaced totally at the customer's expense, there will be no warranty claim.



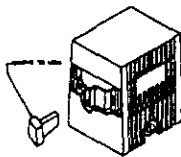
Warning

If the plug or receptacle does get wet, DO NOT unplug the cord. Disconnect the fuse or circuit breaker that supplies power to the tool. Then unplug and examine for presence of water in the receptacle.



To avoid the possibility of the appliance plug or receptacle getting wet, position tile saw to one side of a wall mounted receptacle to prevent water from dripping onto the receptacle or plug. A "drip loop," shown in the figure below, should be arranged by the user to properly position the power cord relative to the power source. The "drip loop" is that part of the cord below the level of the receptacle, or the connector if an extension cord is used. This method of positioning the cord prevents the travel of water along the power cord and coming in contact with the receptacle.

Lock Out Method



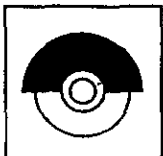
In order to help prevent accidental starting and to help make your workshop "Kidproof", this saw is provided with a means to deactivate the functioning of the motor switch. The switch is provided with a removable toggle. With the toggle removed the switch does not function, and the motor cannot be turned on. Replacing the toggle reactivates the switch function. See illustration.

Sawing Operations

General Cutting Guidelines

For Best Results...Use MK Diamond Blades

- A diamond blade *does not cut, it grinds*. Do not force the tile into the blade, nor feed it too quickly.
- Diamond blades are not all alike. Match the MK blade to the product to be cut.
- Before mounting any blade on the saw, inspect the arbor shaft, flanges and blade for damage or fatigue.
- It is natural for the diamond blade to wear out. Follow MK's blade recommendations for better longevity and efficiency.
- Check that the directional arrow of your MK blade always points in a counter-clockwise direction as it is mounted.
- Ensure that a continuous flow of water to both sides of the blade occurs during operation.
- Diamond blades need to be sharpened from time-to-time, as this allows for optimum performance. (See optional accessories.)
- Be sure the blade arbor hole diameter matches the blade shaft.
- Never operate any saw without safety guards in place.
- Do not force the blade into the material; allow the blade to cut at its own speed.
- Do not cut dry with blades designed for wet cutting.
- Do not make long continuous cuts with dry cutting blades; allow the blade to cool by turning the air every few minutes.
- Do not exceed the blades safe operating speed.
- Do not operate the saw with a blade diameter larger than the saw's capacity.
- Do not cut or grind with the side of the diamond blade, or make radius or curve cuts.



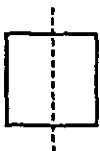
notice Use only MK DIAMOND authorized brushes to ensure compatibility and avoid motor damage.
For best results use only MK DIAMOND blades.



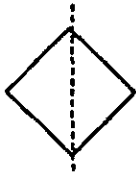
Warning

Do not attempt to cut pieces too small to hold by hand outside the blade guard. Avoid awkward hand positions where a sudden slip could cause a hand or fingers to come in contact with the blade. When cutting any material, make sure it is fully supported. Hold workpiece firmly against the fence. Only feed the material as fast as the blade is able to effectively cut. **DO NOT FORCE THE MATERIAL INTO BLADE!**

Rip Cutting



square cut



diagonal cut

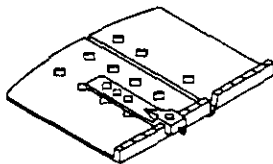
Rip cutting is the term used to describe cutting the material flat on the conveyor table. When cutting the material on the square, position the rip guide to the desired cutting dimension, and tighten the thumb screw to secure it in place. Firmly hold the material against the conveyor table back stop and the rip guide while cutting. When cutting diagonally, position the material using the conveyor table back stop and the optional dual 45° flat angle guide. For cutting materials at other angles, use the 0-90° protractor to align material to the desired angle. (See optional accessories, page 5.)

Warning

Do not attempt to cut pieces too small to hold by hand outside the blade guard. Avoid awkward hand positions where a sudden slip could cause a hand to move into the blade. When cutting a large piece of material, make sure it is fully supported. Hold workpiece firmly against conveyor table, back stop and guide. Only feed the material fast enough for the blade to cut. **DO NOT FORCE.**



Table Markings



The markings on the table back stop are used to aid in cutting tile to particular dimensions. The scale on the top of the back stop is used for setting the rip guide's diamond window indicator relative to the exact distance from the diamond blade to the edge of the rip guide. You must *first measure* the tile for the cut to act as the standard, and then use the rip guide & table markings to assist in additional cuts.

Maintenance



For your safety, turn ON/OFF switch "OFF" and unplug saw from the power source before performing any maintenance or cleaning.

If the power cord becomes damaged in any way, replace it immediately with the approved cord. When cleaning the saw, **DO NOT** let the motor come in direct contact with water. If excessive moisture is introduced to the motor electrical shock could occur and can cause damage to the internal parts.

DO NOT Service the motor's internal parts yourself. Contact an authorized MK Service Center, or MK Diamond's Factory Service Center for technical support and parts information 1-800-474-5594 for help in solving any problems.



Periodic maintenance your MK-370 allows for long life and trouble-free operation. The cutting residue that the saw generates could be considerable. A cleaning, lubrication and maintenance schedule should be maintained.

Required maintenance practices include:

- Clean the saw with fresh water after every use.
- Pump clear/fresh water for (1) minute through the water pump and blade guard assembly to safeguard against slurry build-up and clogging.
- Inspect the diamond blade for it's overall integrity. Check the rim or segment rim for wear or damage.
- Inspect the wear of the electric motor's (2) carbon/graphite brushes regularly. The brushes are easily accessible by removing the brush caps with a flat end screw driver from the square top of the motor. Pull the brushes from their holder and change them when approximately 1/4" of the brush remains. Use only authorized MK parts.

Trouble Shooting



motor problems

Warning

For your safety, turn the ON/OFF switch "OFF" and unplug the saw from the power source before performing any troubleshooting procedures.

- Check the power source for 115V.
- Check that the circuit breaker from power source is at 20 amp.
- Check for correct extension cord gauge/length
- Reset Ground Fault Circuit Interrupter (if used)
- Check integrity of the carbon/graphite brushes (min. 1/4")
- Check the continuity of the ON/OFF switch

if blade won't cut properly

Check that the blade is the correct specification for material being cut.
Check for worn out diamond edge & sharpen as necessary using dressing stick (MK part #152792), and slowly cut stick in (10) 1/16" slices to redress the diamond blade edge.
Check that blade is rotating in the same direction as the rotation arrow.
Make sure the blade core is not bent.

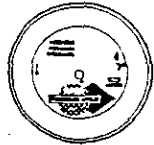
table motion

Check that the guide bar is not over rotated in either direction and is clean and free of slurry build up.
Lubricate guide bar periodically with light machine oil per maintenance instructions.
Check the condition of the (2) multi-lube bearings & insure they are in good condition.
Check that the saw frame has not been bent.
Check that the (2) end bolts (part# E2) are not over torqued.

water flow problems

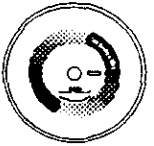
Check that the water pump vibrates when the motor is on. Reprime pump: Take water hose off blade guard, remove air bubbles, fully submerge pump outlet in water, turn motor on.
Plug the water pump into an electrical outlet, fully submerge pump in water and check it's operation.
Check that the water jets in the blade guard are clear, not clogged with hardened slurry or tile particles.
Check that the pump's water valve is in the full OPEN position.

Optional Accessories



MK-200

The MK-200 blade is a premium continuous rim wet cutting diamond blade (without groves). This blade offers fast cutting on many types of ceramic materials. (part# 139295, 7" (178mm))



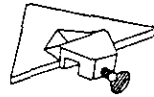
MK-215

The MK-215 blade is a supreme continuous rim wet cutting diamond blade (without groves). It is designed with a diamond concentration suited for hard ceramics and soft marble. (part# 139311, 7" (178mm))



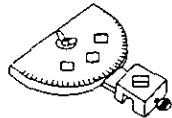
MK-315

The MK-315 blade is a super-hi rim continuous rim wet cutting diamond blade (without groves). The type and depth of diamond permits longer life and fast cutting on hard vitreous, porcelain tile as well as marble and granite. (part# 153293, 7" (178mm))



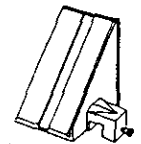
Dual 45° flat angle guide

This guide is used to align the material for diagonal cutting. (part #134569-MK)



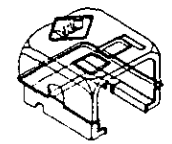
0-90° Protector

This guide is used to align the material for cutting any desired flat angle. (part #134569-MK)



Small 45° Bullnose Miter Plate

This guide is used to cut 45° miters on bullnose and 1/4 round tile. (part #134585-MK)



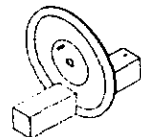
Water Containment Hood

This two piece thermoplastic hood controls mist and water for a dry work area, without limiting visibility. (part #151924-MK)



Ground Fault Circuit Interrupter

This accessory (120V/15 amp) allows the use of a water pump when an outlet mounted GFCI is not installed. Easily plugs into a standard 3-pole grounded outlet to convert a ground fault protected circuit. (part# 152610)



Dressing Stick

Specially formulated abrasive stone that permits the fast exposure of new jagged diamonds to the blade's periphery and sides. Resharpener of the blade is easily accomplished by cutting multiple 1/16" slivers from the stone. This action quickly redresses the blade, and is especially ideal when tacking very hard stone and ceramics. (part# 152792)



Saw Stand

Sturdy, compact & rugged steel saw stand designed for the MK-370 Tile Saw. The stand easily affixes to the water reservoir and orients the saw to a comfortable operating height. Easy assembly & "How-To" instructions are included with the stand. (part# 155953)

MK-370 Parts List**Model**

MK-370 Tile Saw 115v/5.3a, Part # 156440

Item	Description	Qty	Part #
A1	Wrench, Blade Nut, 15/16 Boxed End	1	134684
A2	Wrench, Blade Shaft, 11/16 Open End	1	153450
A3	Blade, 7 Dia X 5/8 Arbor	1	153441
A4*	Owner's Manual, 370	1	156760
A5*	Warranty Card	1	155037
A6*	Information Tag, 370	1	156750
A7	Assembly, Rip Guide w/ Screw, 1/4-20 X 3/4 Thumb	1 1	134551-MK 150991
B	Assembly, Blade Guard, 7"	1	154811-MK
B1	Casting, Guard, Blade, 7"	1	154811
B2	Elbow, 1/8 MNPT X 1/4 BARB 90° Brass	1	154652
B3	Knob, Davies	1	151681
B4	Washer, 5/16 SAE Flat	2	151754
B5	Wingnut, 5/16-18 Nylock	1	151746
D1	Frame	1	155792
D2	Pan, Water	1	155791
D3	Cord Clip, 1/4 Push Mount	1	157259
E	Assembly, Guide Bar, 5/8	1	151739-MK
E1	Bar, Guide, 5/8 Dia	1	151739
E2	Screw, 5/16-18 X 1 Hex Head Cap	2	151743
E3	Washer, 5/16 Split Lock	2	151747
E4	Washer, 5/16 SAE Flat	2	151754
F	Assembly, Linear Bearing, 5/8 Dia	1	n/a
F1	Bearing, Linear, 5/8 Dia	1	151737
	F1A) Bearing, Multilube	2	151781
F2	Screw, 5/16-18 X 1 Hex Head Cap	2	151743
F3	Washer, 5/16 Split Lock	2	151747
F4	Washer, 5/16 SAE Flat	2	151754
G	Assembly, Motor Mount	1	155811-MK
G1	Motor Mount	1	157403
G2	Washer, 5/16 Split Lock	1	151747
G3	Screw, 5/16-18 X 2 1/2 Hex Head Cap. Full Thread	1	151748
G4	Screw, 1/4-20 X 1/2 Flat Head Phillips Cap	3	155812
H1	Motor, 120v/5.3a, 370	1	156418
H2	Label, Caution, GFCI, 1 X 2 1/8	1	155678
H3	Label, Caution, Receptacle, 1 X 2 1/8	1	154822
H4	Screw, 10-32 X 5/8 Flat Head Phillips Cap	4	157554
H5	Flange, Blade	2	135830
H6	Nut, 5/8-18 UNF	1	135848
H7	Adapter, Motor, 370	1	156703
H8	Screw, 10-32 X 1/4 Socket Head Set. Cup Point	3	156715

H9	Label, 370 Model	1	156692
J1	Cover, Post, 370	1	156748
J2	Screw, 1/4-20 X 5/16 Socket Head Set, Cup Point	2	154226
J3	Label, Warning, Read Owner's Manual	1	155806
J4	Label, 370 Model	1	156692
K	Assembly, Roller Wheel, Double	1	156586
K2	Bracket, Roller Wheel	1	156522
K2	Wheel, Roller	2	151799
K3	Screw, 1/4-20 X 1 1/2 Hex Head Cap	2	151914
K4	Washer, 1/4 SAE Flat	2	151915
K5	Nut, 1/4-20 Hex	2	151893
L	Assembly, Splash Curtain	1	155901-MK
L1	Curtain, Splash	1	134841
L2	Bracket, Splash Curtain	1	155901
L3	Washer, 1/4 SAE Flat	1	151915
L4	Wingscrew, 1/4-20 X 1/2	1	151888
M1	Table, 370	1	156536
M2	Screw, 5/16-18 X 1 Hex Head Cap	2	151743
M3	Washer, 5/16 Split Lock	2	151747
M4	Washer, 5/16 SAE Flat	2	151754
N	Assembly, PES-100 120v Water Pump	1	155987-MK
N1	Pump, Water, PES-100 120v	1	155987
N2	Hose, Vinyl, 3/8 ID	2"	156039
N3	Hose, Vinyl, 1/4 ID	2"	132951
N4	Clamp, Flow, 1/4-1/2	1	154394
N5	Owner's Manual, Water Pump	1	155745

* Not shown in exploded view

Rev 8/99

HOW TO ORDER REPAIR PARTS

PLEASE HAVE THE FOLLOWING INFORMATION READY BEFORE CALLING:

SERIAL NUMBER OF YOUR SAW
MODEL NUMBER OF SAW
WHERE PURCHASED AND WHEN
PART NUMBER
PART DESCRIPTION

ALL PARTS LISTED MAY BE ORDERED FROM YOUR LOCAL DISTRIBUTOR OR FROM MK DIAMOND. IF THE PART IS NOT STOCKED LOCALLY, CALL OUR TOLL FREE NUMBER LISTED BELOW AND ASK FOR OUR CUSTOMER SERVICE DEPARTMENT. FOR TECHNICAL SUPPORT CALL: 1 (800) 474-5594. THERE IS A \$25.00 MINIMUM ORDER.

RETURNED MERCHANDISE POLICY

SHOULD YOU NEED TO RETURN ANY PRODUCT YOU HAVE PURCHASED FROM MK DIAMOND, PLEASE OBSERVE THE FOLLOWING:

OUR CUSTOMER SERVICE DEPARTMENT SHOULD BE CONTACTED FOR APPROVAL TO RETURN MERCHANDISE. MERCHANDISE WILL NOT BE ACCEPTED WITHOUT A RETURNED GOODS AUTHORIZATION NUMBER. ALL RETURNED MERCHANDISE MUST BE SHIPPED PREPAID TO DESTINATION. ALL RETURNED MERCHANDISE MUST HAVE BEEN PURCHASED WITHIN THE PREVIOUS 12 MONTHS AND BE IN RESALABLE CONDITION. A RESTOCKING CHARGE OF 15% WILL BE BILLED.

PARA ORDENAR PARTES DE REPUESTO

SÍRVASE TENER LISTA LA SIGUIENTE INFORMACIÓN ANTES DE LLAMAR:

NÚMERO DE SERIE DE LA SIERRA
NÚMERO DE MODELO DE LA SIERRA
DÓNDE Y CUANDO SE COMPRÓ LA SIERRA
NÚMERO DE LA PARTE
DESCRIPCIÓN DE LA PARTE

TODAS LAS PARTES LISTADAS SE PUEDEN PEDIR A TRAVÉS DE SU DISTRIBUIDOR AUTORIZADO O DIRECTAMENTE A MK DIAMOND. SI LA PARTE NO ESTÁ EN EXISTENCIA LOCAL, LLAME AL NÚMERO DE TELÉFONO INDICADO ABAJO Y PIDA EL DEPARTAMENTO DE ATENCIÓN AL CLIENTE. PARA SOPORTE TÉCNICO, LLAME AL 1-800-474-5594 SIN CARGO. EL PEDIDO MÍNIMO ES DE \$25.00.

POLÍTICA DE DEVOLUCIÓN DE MERCANCÍA

EN CASO DE QUE SEA NECESARIO DEVOLVER ALGÚN PRODUCTO QUE USTED HAYA COMPRADO A MK DIAMOND, SÍVASE OBSERVAR LO SIGUIENTE:

USTED DEBE DIRIGIRSE A NUESTRO DEPARTAMENTO DE ATENCIÓN AL CLIENTE PARA RECIBIR UNA APROBACIÓN DE DEVOLUCIÓN DE MERCANCÍA. NO SE ACEPTARÁ MERCANCÍA DEVUELTA SIN EL CORRESPONDIENTE NÚMERO DE PAGADO HASTA SU DESTINO. TODA LA MERCANCÍA DEVUELTA DEBERÁ EMBARCARSE CON FLETES MESES ANTERIORES Y ESTAR EN CONDICIONES DE PODERSE VENDER COMO NUEVA. SE APLICARÁ UN CARGO DE 15% POR REINTEGRO AL ALMACÉN.

POUR COMMANDER LES PIÈCES DE RECHANGE

VEUILLEZ AVOIR LES INFORMATIONS SUIVANTES AVANT D'APPELER :

NUMÉRO DE SÉRIE DE LA SCIE
NUMÉRO DE MODÈLE DE LA SCIE
DATE ET LIEU D'ACHAT
RÉFÉRENCE
DESIGNATION DE LA PIÈCE

TOUTES LES PIÈCES INDIQUÉES PEUVENT ÊTRE COMMANDÉES AUPRÈS DE VOTRE DISTRIBUTEUR LOCAL OU AUPRÈS DE MK DIAMOND. SI LA PIÈCE N'EST PAS STOCKÉE LOCALEMENT, VEUILLEZ APPELER NOTRE NUMÉRO D'APPEL GRATUIT INDIQUÉ CI-DESSOUS ET DEMANDER LE SERVICE DE LA CLIENTÈLE. POUR SUPPORT TECHNIQUE, VEUILLEZ CONTACTER LE 1 (800) 474-5594. UN MINIMUM DE COMMANDE 25,00 DOLLARS US EST DE RIGUEUR.

POLITIQUE DE RETOUR DE MARCHANDISES

SI VOUS VOUS TROUVEZ DANS L'OBLIGATION DE RETOURNER UN PRODUIT DONT VOUS AVEZ FAIT L'ACHAT À MK DIAMOND, VEUILLEZ SUIVRE LES CONSIGNES SUIVANTES:

NOTRE SERVICE DE CLIENTÈLE DEVRAIT ÊTRE CONSULTÉ POUR APPROBATION AVANT DE RETOURNER TOUTE MARCHANDISE. LA MARCHANDISE NE SERA EN AUCUN CAS ACCEPTÉE SANS NUMÉRO D'AUTORISATION DE MARCHANDISES RETOURNÉES. TOUTES LES MARCHANDISES RETOURNÉES DOIVENT AVOIR FAIT L'OBJET DE L'ACHAT DANS LES 12 MOIS PRÉCÉDENTS ET ÊTRE EN ÉTAT DE REVENTE. UNE CHARGE DE RESTOCKAGE DE 15% SERA FACTURÉE.



MK Diamond Products, Inc.
1315 Storm Parkway, Torrance, CA 90509-2803
1 (800) 421-5830 FAX 1 (310) 539-5158