

LEAF BLOWER

#77151

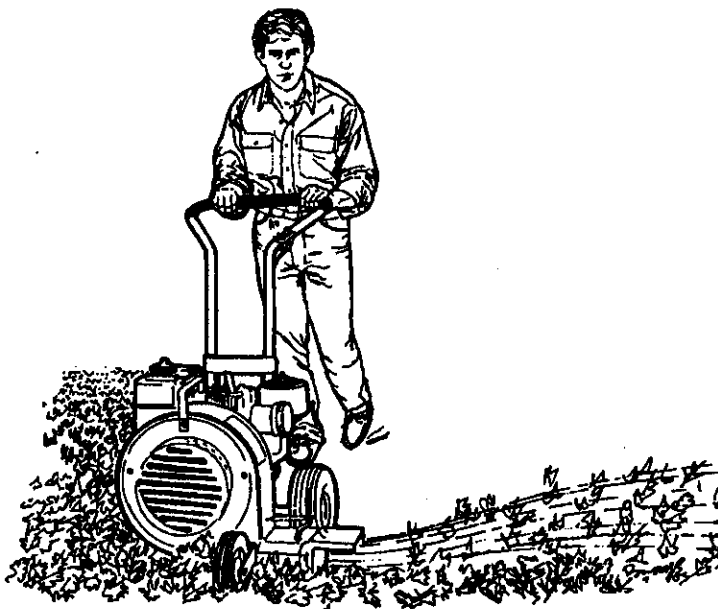
#77181

LB552PNM - LB862M

OWNER'S MANUAL

NOTICE

FAMILIARIZE YOURSELF WITH THE CAUTION INSTRUCTIONS BELOW BEFORE PROCEEDING TO READ THE INSTRUCTION MANUAL. IMPROPER OPERATION CAN CAUSE SERIOUS INJURY.



⚠ CAUTION ⚠

- (1) READ OPERATING INSTRUCTIONS THOROUGHLY BEFORE USING.
- (2) DANGER: Rotating parts, keep hands, feet, and clothing out of openings at all times and especially while machine is running.
- (3) NEVER operate with the protective cover removed.
- (4) NEVER direct the discharge with the bag removed towards any persons, children, or animals.
- (5) Stop engine and disconnect spark plug wire before attempting to clean intake or discharge.
- (6) Do not use this machine for any purpose other than that for which intended.

091-0058

⚠ CAUTION ⚠

DO NOT REMOVE IMPELLER COVER WHILE MACHINE IS RUNNING. SEVERE INJURY WILL RESULT.

091-0059

610/495-7181

MACKISSIC, INC. P.O. BOX 111, PARKER FORD, PA 19457
e-mail mackissic1@msn.com

FAX 610/495-5951

FORM NO. LB552PNM-862M-06/99
P/N 705-0154

Assembly Instructions

Your leaf blower has been carefully packed at the factory. Before proceeding with assembly, make sure all parts have been received and are in good condition. If there are shortages or damage, report it immediately to the company from whom you obtained the machine.

NOTE: In the following instructions, the item number refers to the number encircled for that part on the drawing.

1. Insert the upper handle into the lower square tube handle. There are three holes in each side of the upper handle which serve as height adjustment holes. Position the upper handle at a comfortable height for you (usually waist high). Move the upper handle up or down slightly to align the holes in the upper and lower handles. Assemble the handle bar brace, placing the top holes of the brace on the upper handle and the lower holes on the lower handle. Space with washers as shown in the drawing. Tighten securely.
2. For 8 hp units, align the wheel hole with the front bracket hole and slide the 1/2" Dia. shoulder bolt through. Tighten with the 3/8-16 Nylon Locknut while being careful not to overtighten by checking that the wheel turns freely.
Note: The front wheel bracket (item 34) provides two different discharge height adjustments by turning the bracket over. The total discharge height adjustment is 1-1/4".
3. Engine is shipped WITHOUT OIL. Fill crankcase with oil before starting.
4. Service the engine as recommended by the manufacturer. Fill the fuel tank with fresh gasoline.
5. Familiarize yourself with the operating instructions before attempting to use your blower.

Training and Preparation/Safety Precautions

- Become familiar with the owner's manual before attempting to operate this machine.
- Children should not be allowed to operate this equipment.
- Before starting the leaf blower, check that all screws, nuts, bolts, and other fasteners are properly secured.
- NEVER direct the discharge air stream toward any observers, children, pets or fragile objects. Small stones, twigs, or grit can be thrown with sufficient force to cause injury or damage.
- NEVER start the engine or use your blower without the impeller cover mounted in place. Do NOT put any objects like sticks or fingers in holes of impeller cover.
- While running your leaf blower, operators should NOT allow hands or any other part of the body or loose fitting clothing near the rotating impeller which can cause injury.

Operating Instructions

1. Stop the engine and disconnect the spark plug wire and make sure that all moving parts have come to a complete stop before attempting to inspect, service, or clean obstructions or blockages from the intake or discharge passages.
2. Stop the engine and allow it to cool for at least two minutes before refilling the gas tank or before lifting leaf blower.
3. For maximum air speed, run the engine with throttle wide open in the "FAST" position.
4. To change air flow from side to front, simply pull diverter handle back to direct air flow to the side and push the handle forward to direct air flow to the front.
5. When frequent switching of front and side discharges is needed, attach spring to standard position (as from factory). If side discharge is used frequently, attach spring to optional position, as shown in Figure #1. In the optional position, the air diverter will automatically snap from the front to the side discharge when engine speed is reduced. The spring is easily moved with needle nose pliers.

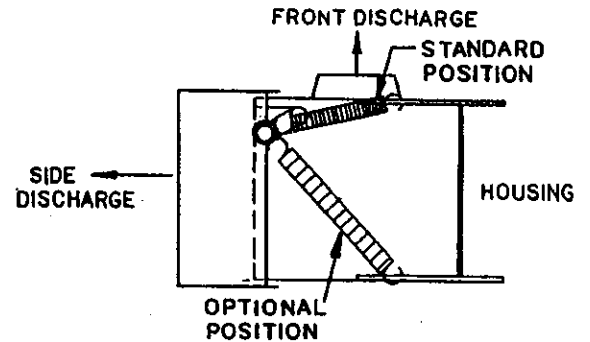
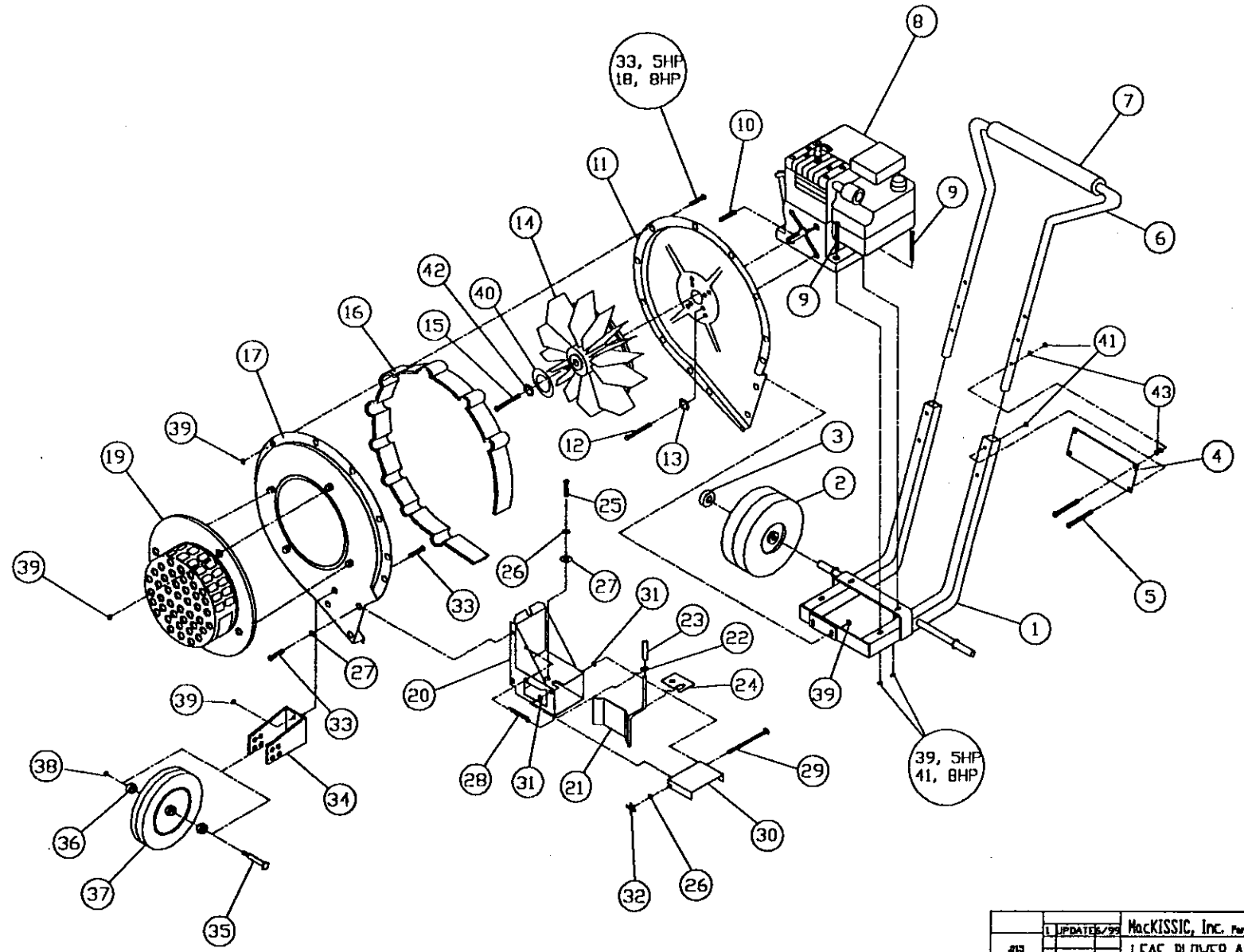


FIGURE NO. 1

Maintenance Instructions

- ◆ Follow engine owner's manual for engine maintenance and repair.
- ◆ Allow the machine to cool before making any inspections or adjustments.
- ◆ When not in use, your leaf blower should be stored out of reach of children. Be sure there are no gasoline fumes in the storage area. Always allow the engine to cool before storing.
- ◆ Do NOT run the machine in an enclosed area since the exhaust from the engine contains carbon monoxide which is colorless, odorless, and tasteless and can be extremely dangerous.
- ◆ Operators shall not tamper with the engine governor settings on the engine which controls the maximum safe operating speed and protects the engine from overspeeding.
- ◆ Order parts with your model number, engine horsepower, and part number.



1	UPDATED/99	MackISSIC, Inc. Parker Ford, PA		
213		LEAF BLOWER ASSEMBLY		
1/92		DC	1/6	
1			1/3/97	715-0000

LEAF BLOWER PARTS LIST

Order Parts by Engine Horsepower and Part Number

<u>Item No.</u>	<u>PART NO. LB552PNM</u>	<u>PART NO. LB862M</u>	<u>QTY.</u>	<u>Description</u>
1	705-0140	705-0092	1	Lower Frame Weldment w/ Gusset
2	705-0153	703-0108	2	Pneumatic Wheel 4.10/3.50-4
3	090-0457	090-0457	2	Push Nut Cap
4	704-0104	704-0104	1	Handle Bar Brace - Plastic
5	090-0078	090-0078	4	5/16-18 x 2" HHCS
6	705-0034	705-0034	1	Upper Handlebar Assembly
7	705-0002	705-0002	1	Grip, Handlebar
8	804-0003	---	1	5 HP Engine (LB552PN)
8	---	030-0173	1	8HP Engine (LB862)
9	090-0090	---	4	5/16-18 x 1 1/2" HHCS
9	---	090-0094	4	5/16-18 x 3 1/4" HHCS
10	703-0424	703-0424	1	1/4" x 1/4" x 2" Lg. Shaft Key
11	705-0095	705-0095	1	Engine Housing Weldment
12	090-0408	090-0408	4	5/16-24 x 3/4" HHCS
13	090-0394	090-0394	4	5/16" Split Lockwasher
14	705-0184	705-0184	1	Impeller - Nylon Plastic
15	090-0021	090-0021	1	3/8-24 x 1 1/4" HHCS
16	---	705-0097	1	Housing Spacer
17	705-0093	705-0093	1	Front Housing Weldment
18	---	090-0090	11	5/16-18 x 1 1/2 HHCS
19	703-0021-A	703-0021-A	1	Impeller Housing Cover
20	705-0100	705-0104	1	Chute Weld Assembly
21	705-0108	705-0110	1	Diverter Weld Assembly
22	090-0225	090-0225	1	3/8" Internal Tooth Lockwasher Pltd.
23	701-0185	701-0185	1	Vinyl Grip, Diverter Handle
24	705-0113	705-0113	1	Diverter Clip
25	090-0052	090-0052	1	1/4-20 x 1/2" HHCS
26	090-0378	090-0378	2	1/4" Split Lockwasher Pltd
27	090-0232	090-0232	5	1/4" USS Flat Washer Pltd
28	701-0059	701-0059	1	Extension Spring, Diverter
29	090-0480	---	1	1/4-20 x 5" Lg. Carriage Bolt
29	---	090-0481	1	1/4-20 x 6" Lg. Carriage Bolt
30	705-0098	705-0099	1	Deflector
31	090-0223	090-0223	2	1/4" Internal Tooth Lockwasher Pltd.
32	705-0049	705-0049	1	Adjustment Knob - 1/4-20 Thread
33	090-0067	---	17	5/16-18 x 5/8" HHCS Pltd
33	---	090-0067	6	5/16-18 x 5/8" HHCS Pltd
34	705-0014	705-0014	1	Front Wheel Bracket
35	705-0056-2	705-0056-2	1	1/2" Dia. Shoulder Bolt
36	705-0043	---	2	Spacer Wheel
37	703-0025	---	1	Front Wheel - 6 x 1.50
37	---	030-0223	1	Front Wheel - 8 x 1.75
38	090-0461	090-0461	1	3/8-16 Nylock Locknut
39	090-0418	---	23	5/16-18 Whiz Locknut Pltd
39	---	090-0418	19	5/16-18 Whiz Locknut Pltd
40	090-0540	090-0540	1	2" Flatwasher
41	090-0460	---	4	5/16-18 Nylock Nut
41	---	090-0460	8	5/16-18 Nylock Nut
42	090-0228	090-0228	1	3/8 Split Lockwasher
43	090-0233	090-0233	6	5/16 USS Flatwasher Pltd

LIMITED WARRANTY

Any product manufactured by MacKissic, Inc. and found, in the judgment of MacKissic, Inc., to be defective in material or workmanship, will be repaired or replaced by an Authorized MacKissic Service Dealer without charge for parts and labor to the original owner of the MacKissic product.

The MacKissic product including any defective part must be returned to an Authorized MacKissic Service Dealer within the warranty period. The expense of delivering the product to the dealer for warranty work and the expense of returning it back to the owner after repair or replacement will be borne by the owner. MacKissic's responsibility is limited to making the required repairs or replacements only. No claim of breach of warranty shall be cause for cancellation or rescission of the sales contract of any MacKissic product. Proof of purchase will be required by the dealer to substantiate any warranty claim. All warranty work must be performed by an Authorized MacKissic Service Dealer.

This warranty is limited to two years from the date of original retail purchase for any MacKissic product (except Tillers) that is used for consumer purposes or 90 day for commercial and rental use.

This warranty does not cover any product that has been subject to misuse, abuse, neglect, negligence, or accident, or that has been operated in any way contrary to or inconsistent with the operating instructions as specified in the owner's manual. The warranty does not apply to any damage to the product that is the result of improper maintenance, or to any product or parts that have not been assembled or installed as specified in the owner's manual.

The warranty does not cover any product that has been altered or modified. In addition, the warranty does not extend to repairs made necessary by normal wear, or by the use of parts or accessories which, in the judgment of MacKissic, Inc., are either incompatible with the MacKissic product or adversely affect its operation, performance or durability. This warranty does not cover engines, electric starters, batteries, and tires which are warranted separately by their manufacturer and for a different period of time.

MacKissic, Inc. reserves the right to change the design of any product without assuming any obligation to modify any product previously manufactured.

THE DURATION OF THE LIMITED WARRANTY IS TWO YEARS CONSUMER, 90 DAYS COMMERCIAL AND RENTAL USE REPAIR OR REPLACEMENT AS PROCEEDED UNDER THIS LIMITED WARRANTY IS THE EXCLUSIVE REMEDY OF THE PURCHASER MacKissic, INC , SHALL NOT BE LIABLE FOR ANY INCIDENTAL OR CONSEQUENTIAL DAMAGES, EXCEPT THE LIMITED WARRANTY DESCRIBED ABOVE, ALL IMPLIED WARRANTIES (MERCHANTABILITY AND FITNESS FOR A PARTICULAR PURPOSE) ARE SPECIFICALLY DISCLAIMED

MacKissic, INC ASSUMES NO RESPONSIBILITY FOR INCIDENTAL, CONSEQUENTIAL OR OTHER DAMAGES INCLUDING, BUT NOT LIMITED TO, EXPENSE FOR GASOLINE, OIL, EXPENSE OF DELIVERING THE PRODUCT TO AN AUTHORIZED MacKISSIC SERVICE DEALER AND EXPENSE OF RETURNING IT BACK TO THE OWNER, MECHANIC'S TRAVEL TIME, TELEPHONE OR TELEGRAM CHARGES, RENTAL OF A LIKE PRODUCT DURING THE TIME WARRANTY REPAIRS ARE BEING PERFORMED, TRAVEL, LOSS OR DAMAGE TO PERSONAL PROPERTY, LOSS OF REVENUE, LOSS OF USE OF THE PRODUCT, LOSS OF TIME OR INCONVENIENCE

This warranty gives you specific legal rights, and you may also have other rights that vary from state to state.