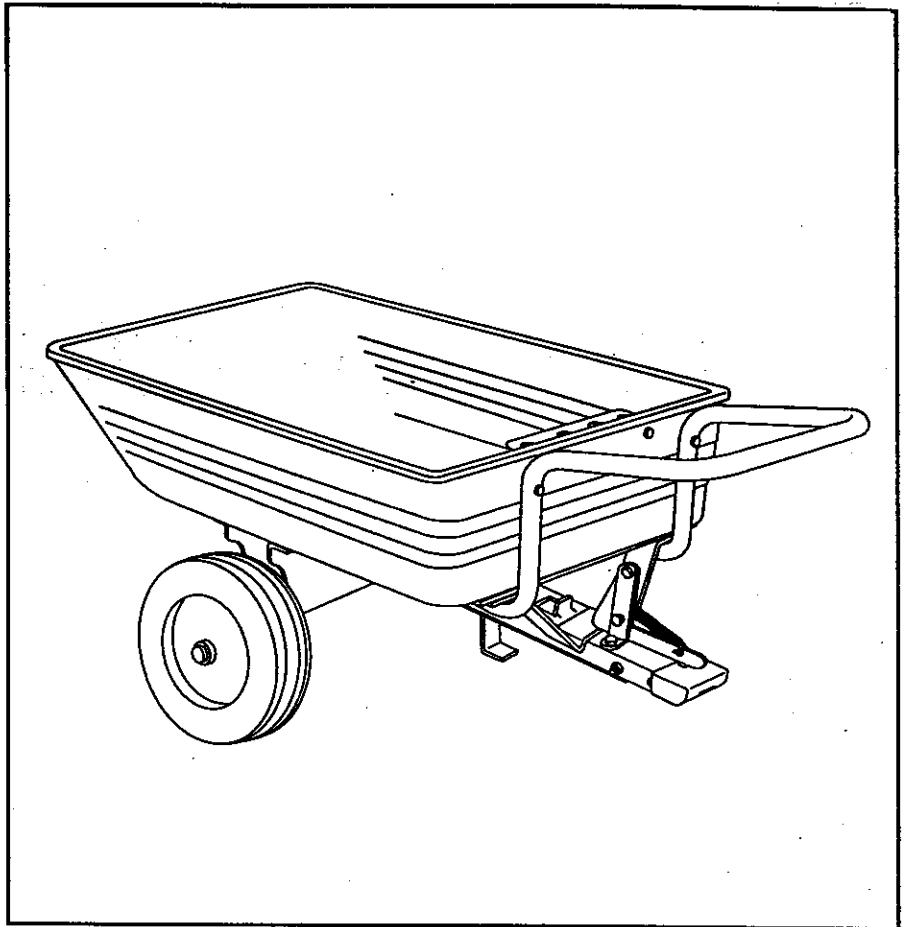


SEARS

**OWNERS
MANUAL**

**Model No.
486.24385**



CRAFTSMAN[®]
UTILITY 10 POLY
CONVERTIBLE CART

CAUTION:

Before using this product,
read this manual and follow
all Safety Rules and
Operating Instructions.

- Safety
- Assembly
- Operation
- Maintenance
- Parts

Sears, Roebuck and Co., Hoffman Estates, IL. 60179 U.S.A.

TABLE OF CONTENTS

Safety Rules	2	Maintenance	9
Warranty	2	Storage	9
Full Size Hardware Chart	3	Repair Parts Illustration	10
Assembly	4	Repair Parts List	10
Operation	8	Slope Gauge	11
		Parts Ordering/Service	Back Cover



SAFETY



Any power equipment can cause injury if operated improperly or if the user does not understand how to operate the equipment. Exercise caution at all times, when using power equipment.

- Read this owners manual before attempting to assemble or operate the cart.
- Read the vehicle owners manual and know how to operate your tractor, before using the cart attachment.
- Do not at any time carry passengers in this cart. It has not been designed to carry passengers.
- Never allow children to operate the tractor or the cart attachment.
- Do not allow adults to operate the tractor or cart attachment without proper instructions.
- Always begin with the transmission in first (low) and gradually increase speed as conditions permit.
- Tow the cart at reduced speed over rough terrain and hillsides or near creeks and ditches to prevent tipping over and loss of control. Do not drive too close to a creek or ditch.
- Vehicle braking and stability may be affected with the attachment of this cart. Do not fill cart to maximum weight capacity without checking the capability of the towing vehicle to safely pull and stop with the cart attached.
- Before operating vehicle on any grade (hill) refer to safety rules in the vehicle owner's manual concerning safe operation on slopes. Refer also to the slope guide on page 11 of this manual. Be aware of changing conditions on slopes. **Stay off steep slopes!**
- Do not tow this cart on highways or public thoroughfares.
- Maximum towing speed is 10 m.p.h.
- Do not load more weight into the push cart than you can handle and control comfortably.
- Follow maintenance and lubrication instructions as outlined in this manual.



Look for this symbol to point out important safety precautions. It means--**Attention!! Become alert!!** Your safety is involved.

WARRANTY

LIMITED ONE YEAR WARRANTY ON CRAFTSMAN POLY CART

For one year from the date of purchase, when this poly cart is maintained and lubricated according to the operating and maintenance instructions in the owner's manual, Sears will repair any defect in material or workmanship free of charge. If this poly cart is used for commercial or rental purposes, this warranty applies for only 90 days from the date of purchase.

This warranty does not cover repairs necessary because of operator negligence or abuse, including the failure to maintain the equipment according to instructions contained in the owner's manual.

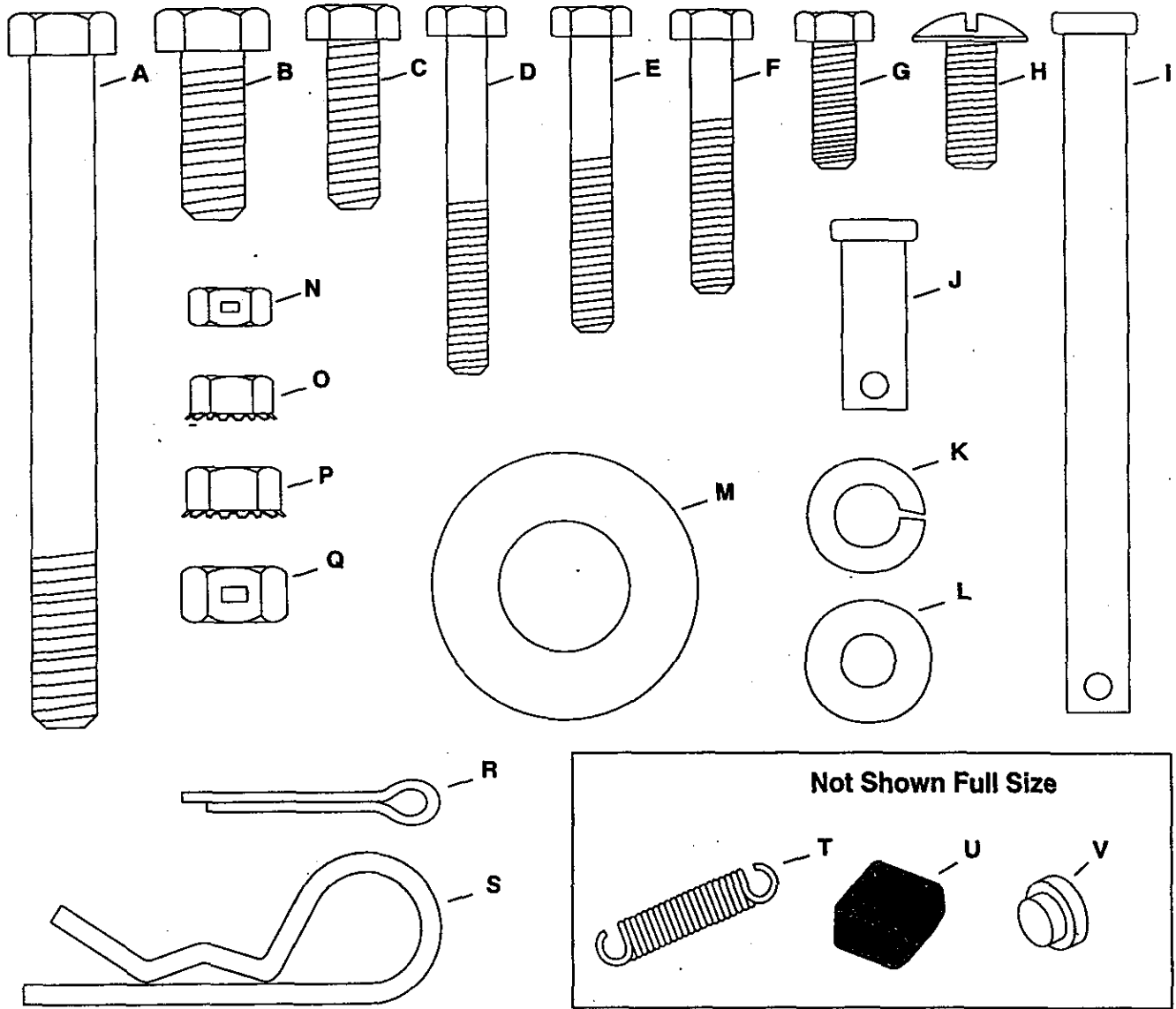
WARRANTY SERVICE IS AVAILABLE BY CONTACTING THE NEAREST SEARS SERVICE CENTER/DEPARTMENT IN THE UNITED STATES.

This warranty applies only while this product is in the United States.

This warranty gives you specific legal rights, and you may also have other rights which vary from state to state. Sears, Roebuck and Co. D/817 WA. Hoffman Estates, Chicago, IL 60179

HARDWARE PACKAGE CONTENTS

HARDWARE SHOWN FULL SIZE

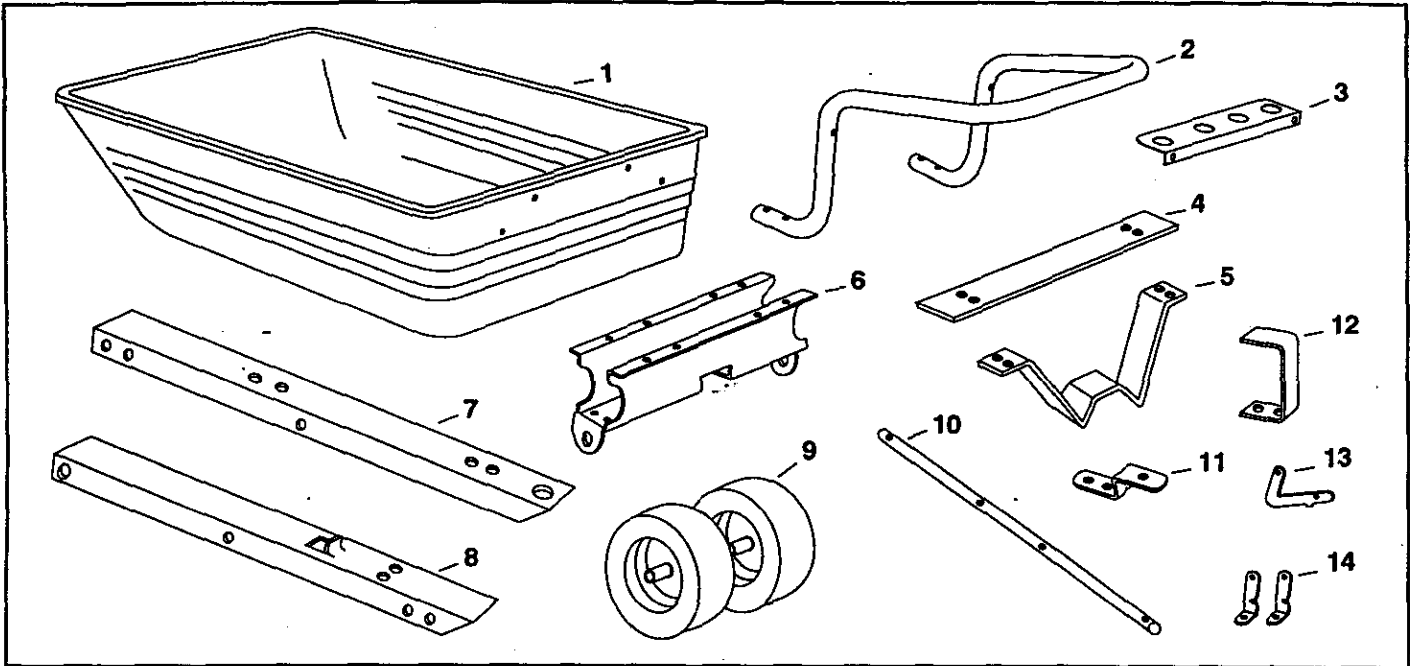


Ref. No.	Quant.	Description	Ref. No.	Quant.	Description
A	1	Hex Bolt, 3/8" x 4"	L	8	Flat Washer, 1/4"
B	2	Hex Bolt, 3/8" x 1"	M	4	Flat Washer, 3/4"
C	2	Hex Bolt, 5/16" x 1"	N	1	Hex Lock Nut, 1/4-20
D	4	Hex Bolt, 1/4" x 2"	O	12	Hex Nut, 1/4-20 SEMS
E	2	Hex Bolt, 1/4" x 1-3/4"	P	10	Hex Nut 5/16-18 SEMS
F	2	Hex Bolt, 1/4" x 1-1/2"	Q	3	Hex Lock Nut, 3/8-16
G	5	Hex Bolt, 1/4" x 3/4"	R	2	Cotter Pin, 1/8" x 1" Lg.
H	8	Truss Head Bolt, 5/16" x 3/4" Lg.	S	2	Hairpin Cotter, 1/8"
I	1	Clevis Pin, 3/8" x 4"	T	1	Extension Spring
J	1	Clevis Pin, 3/8" x 1"	U	1	Plastic Cap
K	2	Lock Washer, 3/8"	V	2	Hub Cap

ASSEMBLY

CARTON CONTENTS (Loose Parts in Carton)

- | | | |
|------------------------|------------------|------------------------------|
| 1. Poly Tray | 6. Wheel Support | 11. Hitch Bracket |
| 2. Handle Tube | 7. Front Tongue | 12. Leg Stand Bracket |
| 3. Tool Holder Bracket | 8. Rear Tongue | 13. Latch Lock |
| 4. Latch Stand Plate | 9. Wheels (2) | 14. Latch Mount Brackets (2) |
| 5. Latch Stand Bracket | 10. Axle | |



CARTON CONTENTS

TOOLS REQUIRED FOR ASSEMBLY

- (1) Screwdriver
- (1) Pliers
- (2) 7/16" Wrenches
- (2) 1/2" Wrenches
- (2) 9/16" Wrenches

- Remove the hardware pack and all loose parts from the carton. Be sure the carton is empty before discarding.

- Lay out all the parts shown on pages 3 and 4.

NOTE: All 1/4" flat washers should be assembled so that they rest directly against the poly tray surface.

- Assemble the latch lock between the latch mount brackets using a 1/4" x 3/4" hex bolt and a 1/4" hex lock nut. Tighten so that the latch lock can still pivot. Attach the extension spring to the latch lock and the latch mount bracket as shown in figure 1.

- Insert the 3/8" x 1" clevis pin through the holes in the latch mount brackets and secure with a 1/8" hairpin cotter. See figure 1.

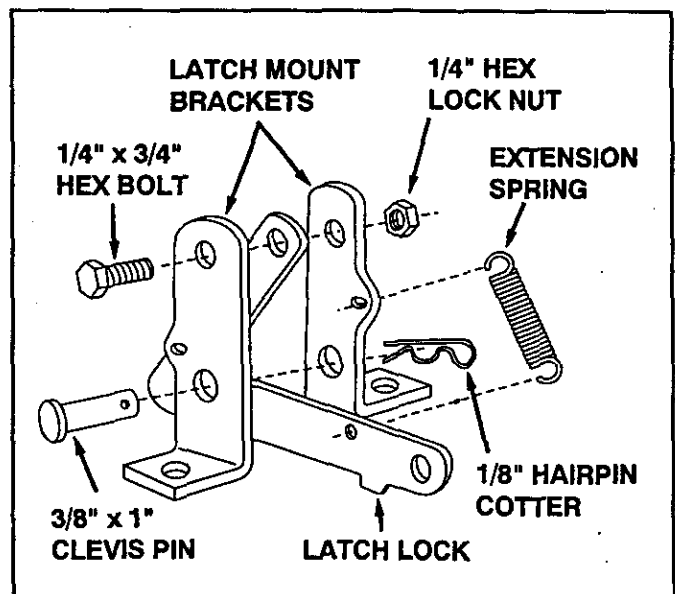


FIGURE 1

- Assemble the latch lock subassembly to the rear tongue using two 1/4" x 3/4" hex bolts and 1/4" (SEMS) type hex nuts. **Tighten.** See figure 2.
- Assemble the plastic cap to the front end of the rear tongue as shown in figure 2.

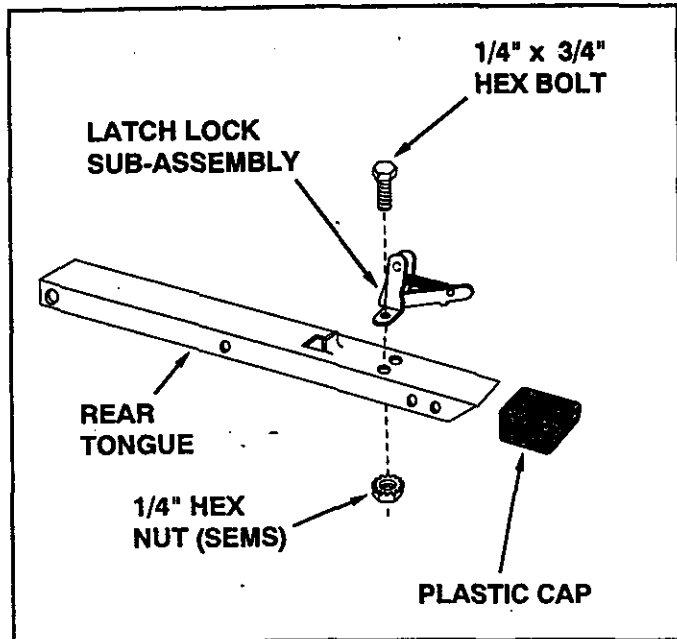


FIGURE 2

- Assemble the axle and the rear tongue to the wheel support with the open side of tongue facing away from the wheel support. Fasten the axle to the wheel support using two 1/4" x 1-1/2" hex bolts and two 1/4" (SEMS) type hex nuts. **Tighten.** See figure 3.

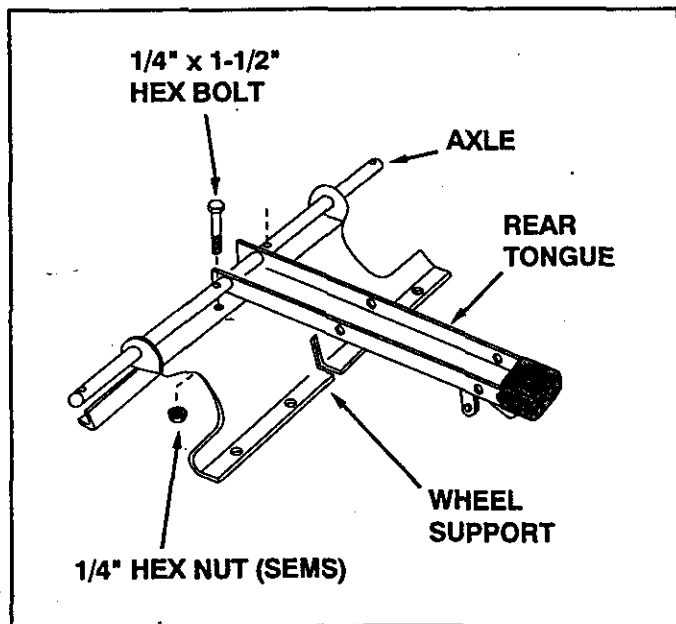


FIGURE 3

- Assemble the hitch bracket to the front tongue using two 3/8" x 1" hex bolts, 3/8" lock washers and 3/8" hex lock nuts. **Tighten.** See figure 4.
- Assemble the leg stand bracket to the front tongue using two 5/16" x 1" hex bolts and 5/16" (SEMS) type hex nuts. **Tighten.** See figure 4.

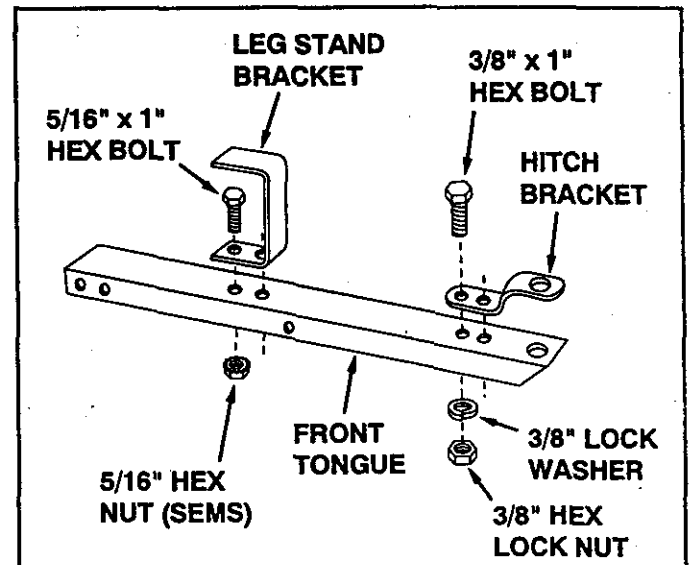


FIGURE 4

- Place the front tongue inside the rear tongue as shown in figure 5. Fasten the tongues together using a 3/8" x 4" hex bolt and a 3/8" hex lock nut. **Tighten** without collapsing the sides of the tongue so that the tongues can pivot freely. See figure 5.
- Insert the 3/8" x 4" clevis pin through the tongues and secure with a 1/8" hairpin cotter, as shown in figure 5.

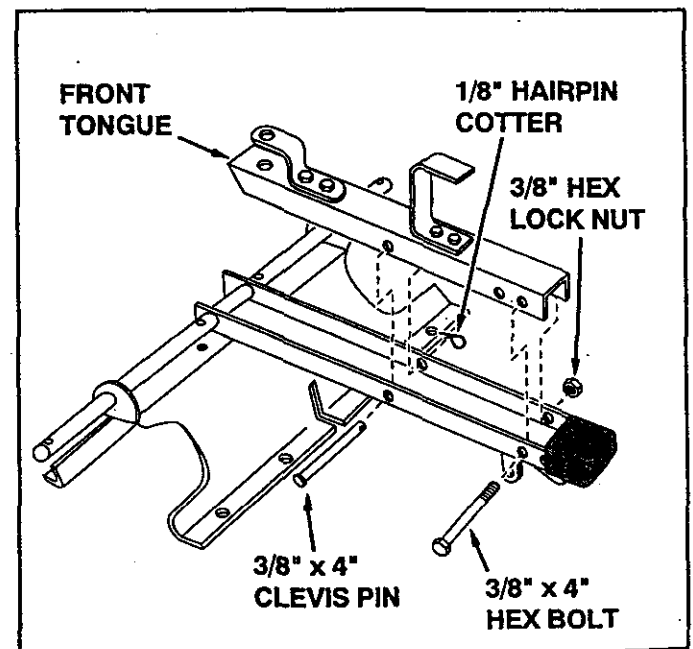


FIGURE 5

- Assemble a 3/4" flat washer, a wheel with the valve stem facing out, and another 3/4" flat washer onto the axle. Insert a cotter pin through the axle, spreading the ends so that a hub cap can fit over the cotter pin. Assemble a hub cap by pressing it onto the 3/4" flat washer. Repeat on other end of axle. See figure 6.

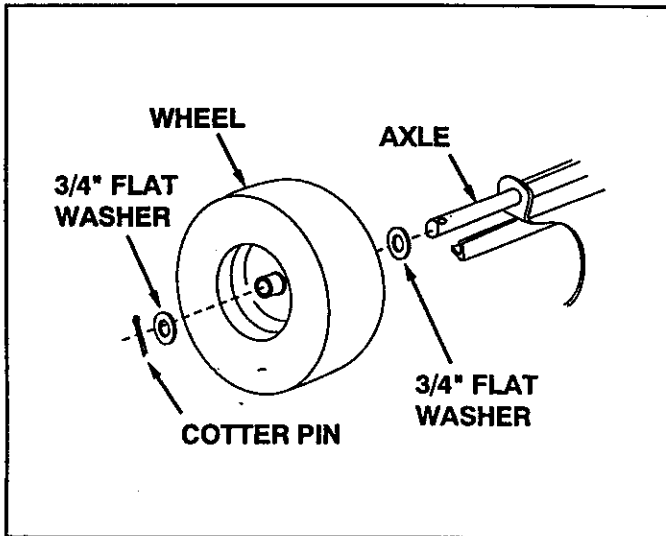


FIGURE 6

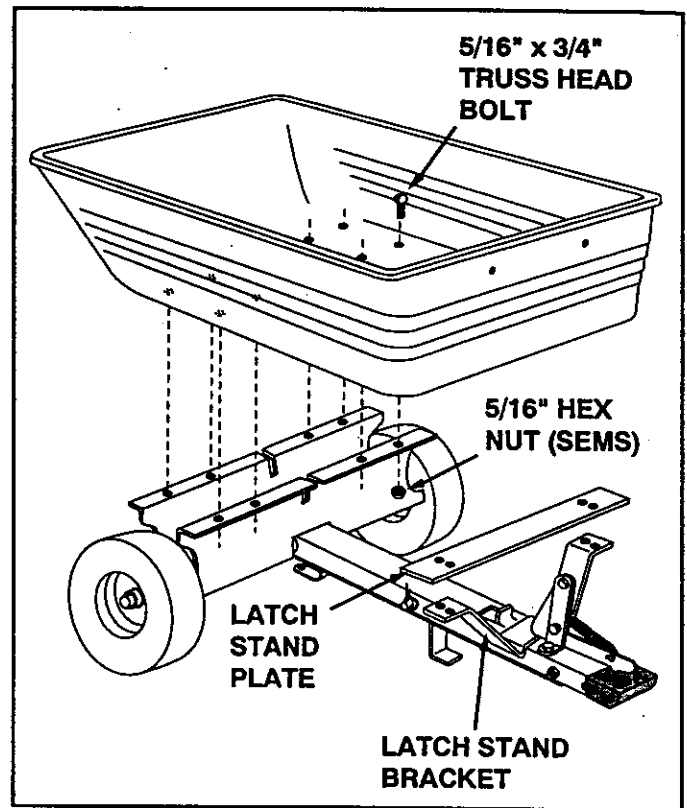


FIGURE 7

- Turn the wheel support over to the upright position. Place the latch stand bracket down between the latch lock assembly and the raised tab on the tongue. Place the poly tray down to rest on the wheel support and latch stand bracket. Fasten the tray to the wheel support using eight 5/16" x 3/4" truss head bolts and 5/16" (SEMS) hex nuts. **Do not tighten yet.** See figure 7.
- Place the latch stand plate between the latch stand bracket and the poly tray. See figure 7.

- Insert two 1/4" x 1-3/4" hex bolts through the handle tube as shown in figure 8. Holding the bolts in place in the handle, insert the bolts through the holes in the poly tray, allowing the legs of the handle to slip beneath the latch stand bracket. Secure the two bolts with two 1/4" flat washers and 1/4" (SEMS) hex nuts. **Do not tighten yet.** See figure 8.

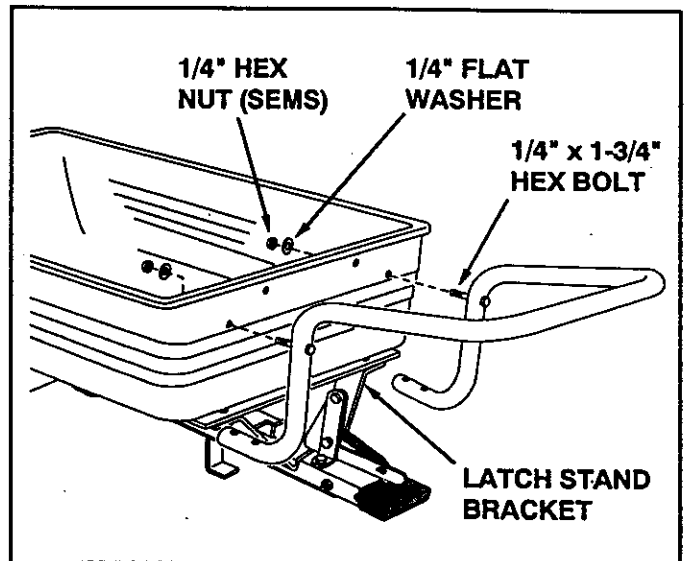


FIGURE 8

- Align the holes in the handle with the holes in the bottom of the poly tray, the latch stand plate and the latch stand bracket. Fasten together using four 1/4" x 2" hex bolts, 1/4" flat washers and 1/4" (SEMS) hex nuts as shown in figure 9. **Tighten.**
- At this time **tighten** all bolts which were left loose.

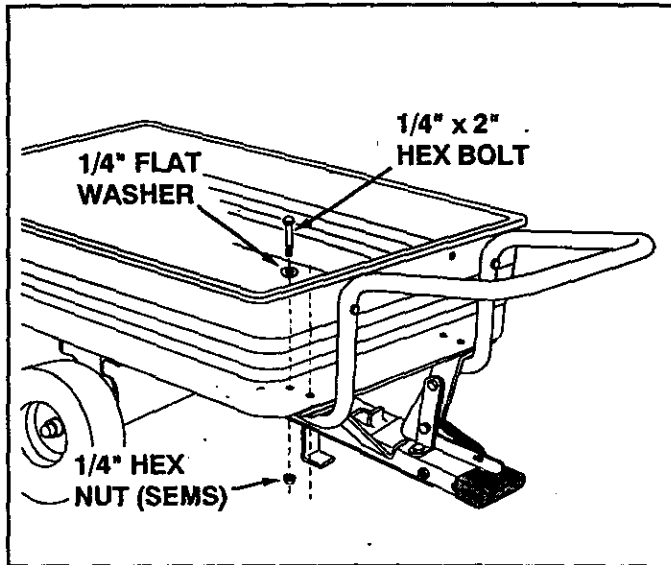


FIGURE 9

- Assemble the tool holder bracket inside the front of the poly tray using two 1/4" x 3/4" hex bolts, two 1/4" flat washers and two 1/4" (SEMS) type hex nuts. **Tighten.** See figure 10.

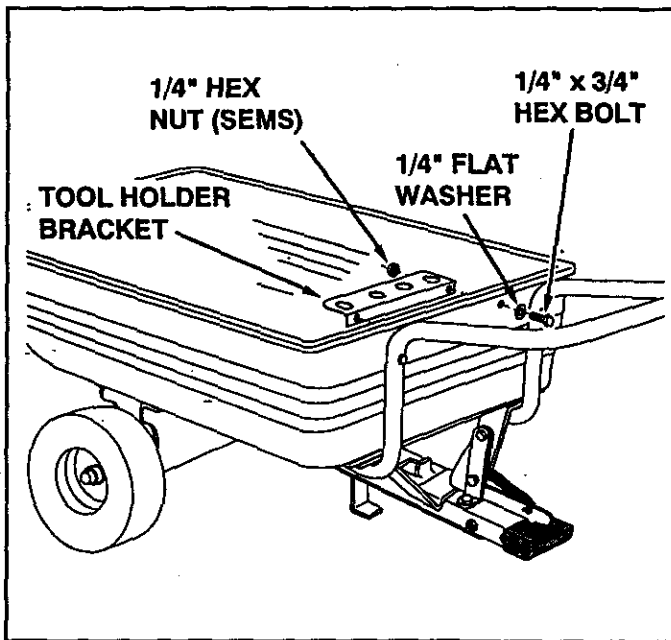
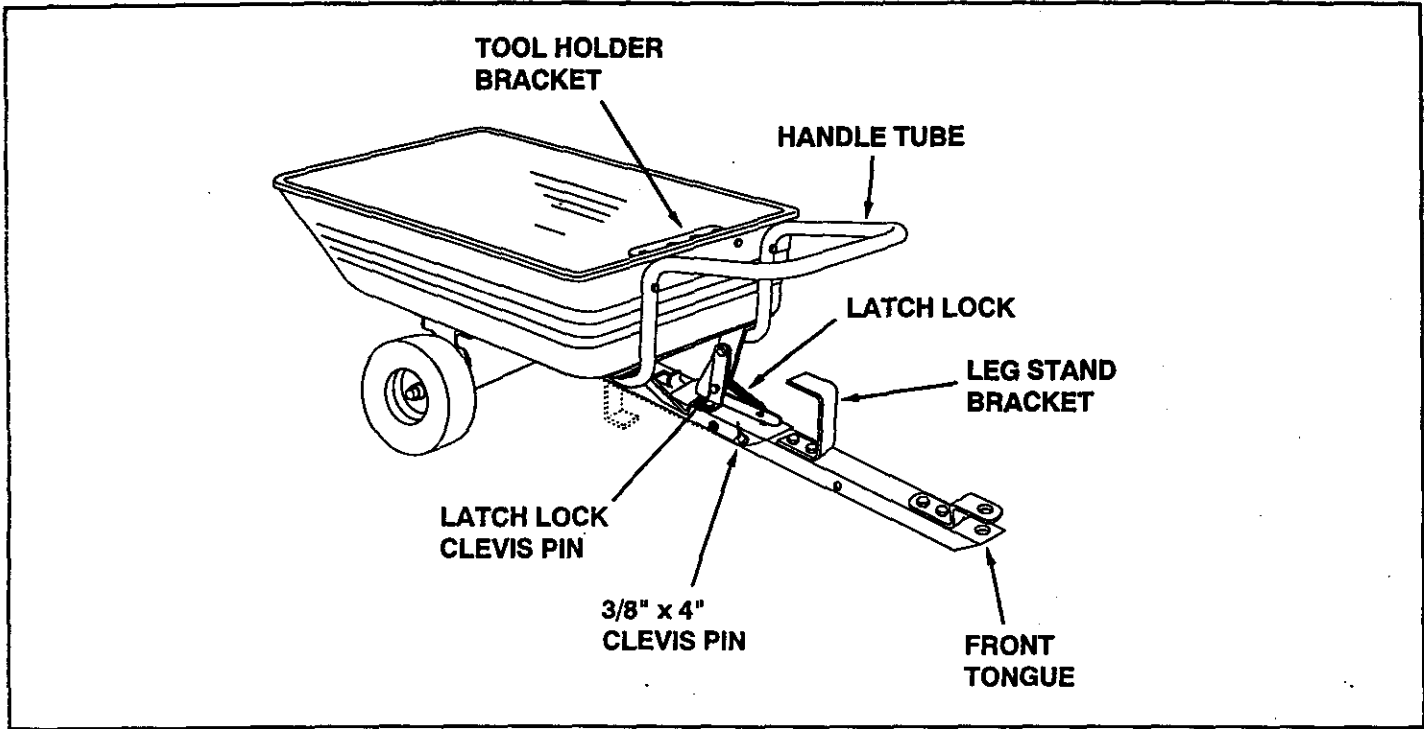


FIGURE 10

OPERATION

KNOW YOUR CART



TOOL HOLDER BRACKET	Designed to hold small hand tools.
HANDLE TUBE	Used to transport and dump the cart when it is converted into a push cart.
LATCH LOCK	Secures the cart bed to the tongue.
FRONT TONGUE	Extends forward or folds under the cart for towing with a tractor or pushing by hand.
LEG STAND BRACKET	Supports the front of the cart when the front tongue is folded under the cart.
3/8" x 4" CLEVIS PIN	Secures the front tongue in either the extended (shown) or folded position.
LATCH LOCK CLEVIS PIN	Prevents the latch lock mechanism from accidentally releasing.

HOW TO USE YOUR TOW CART

DO NOT EXCEED 650 LB. CAPACITY OF CART
One cubic foot of dirt weighs approximately 150 lbs.



CAUTION: Vehicle braking and stability may be affected with the addition of an accessory or and attachment. Be aware of changing conditions on slopes.

USING AS A TOW CART

- To convert the cart for towing, remove the plastic cap from the tongue. Remove the 4" long clevis pin and hairpin cotter which secure the front tongue in storage position underneath the rear tongue. Pivot the front tongue outward and secure it in the towing position using the same clevis pin and hairpin cotter. Refer to drawing above.
- The maximum towing speed for this cart is 10 m.p.h.

- Refer to the vehicle owners manual for instructions on safe operation on slopes.
- Use the slope guide provided on page 11 of this manual to determine whether slope angle is too steep for safe operation.
- Always test to make sure your tractor has adequate towing and braking capabilities whenever hauling a substantial amount of weight in your cart. Use extra caution when operating on slopes.
- For best handling and traction, distribute the weight of the load evenly in the cart.
- To dump material from the cart, remove the 1" long clevis pin from the latch on the tongue and release the latch. The cart bed will then tilt backwards to empty its contents. After emptying, pull the front of the bed down toward the cart tongue until the latch snaps into place. Reinstall the clevis pin in the latch to prevent accidental release of the latch.



CAUTION: To avoid possible injury, before releasing the latch be sure that no one is near the cart.

USING AS A PUSH CART:

IMPORTANT: Leave the latch lock clevis pin in place at all times while using the cart as a push cart. The clevis pin is shown in figure 1 on page 4.

- To convert the cart for push operation, remove the 4" long clevis pin and hairpin cotter which secure the tongue in the towing position. (See drawing on page 8.) Pivot the front tongue into the storage position underneath the rear tongue and secure it using the same clevis pin and hairpin cotter. (See figure 5 on page 5.) Place the plastic cap over the exposed end of the tongue.

- For best handling, and to help prevent accidental tipping, distribute the weight of the load evenly in the cart.
- Do not load more weight into the push cart than you can handle and control comfortably.
- To dump material from the push cart, lift up on the handle and tilt the cart forward. **Be sure** that the latch mechanism on the tongue is locked and secured with the clevis pin to prevent accidental release of the latch.

MAINTENANCE/STORAGE

CUSTOMER RESPONSIBILITIES

- Read and follow the maintenance schedule and the procedures listed in the maintenance section.

MAINTENANCE SCHEDULE Fill in dates as you complete regular service.	Service Dates											
	Before each use	After each use	Twice a year	Every season	Before storage							
Check for loose fasteners	X											
Check for worn or damaged parts	X											
Check tire pressure	X											
Lubricate				X								
Clean		X			X							

SCHEDULED MAINTENANCE

- Check for loose fasteners before each use.
- Check for worn or damaged parts before each use.
- Keep tires filled to a recommended tire pressure of 12-14 Lbs.



CAUTION: DO NOT inflate tires beyond the maximum recommended pressure printed on side of tire.

- At the beginning of each season, using a light machine oil, lubricate the latch, the latch pivot bolt, and the area of the axle where the draw bar tongue pivots. See figure 11.
- Grease or oil the wheel bearings periodically (at least once each season). Use grease or 20 weight oil. See figure 11.

STORAGE

- Clean thoroughly before storing.
- Remove any rust from painted surfaces and coat with touch up paint.
- Store in a dry area.

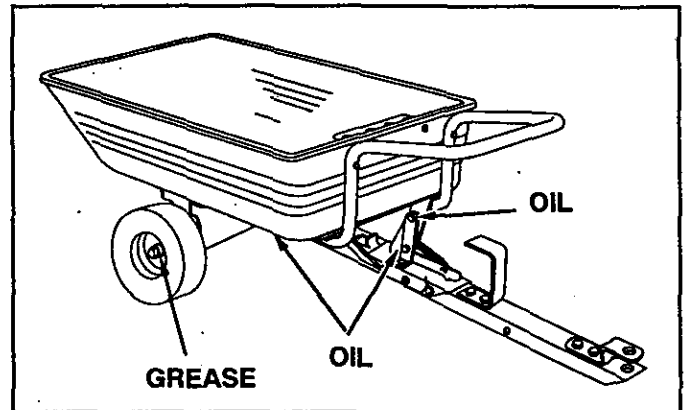
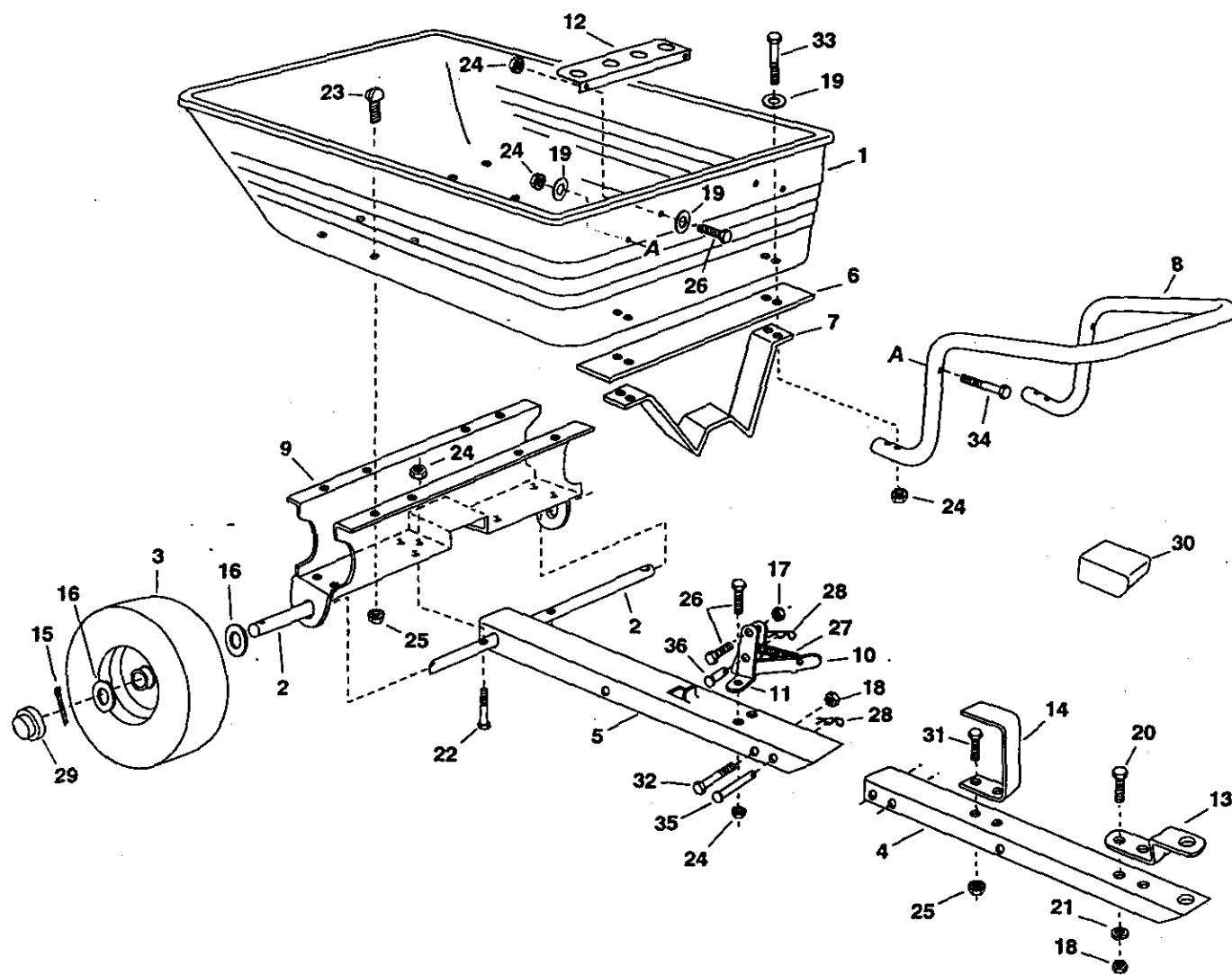


FIGURE 11

CART SPECIFICATIONS

Tires: 16" x 4" Pneumatic
Axle: 3/4" Dia. Steel
Capacity: Up to 650 Lbs. Max.
Approx. Sh. Wt. 55 Lbs.

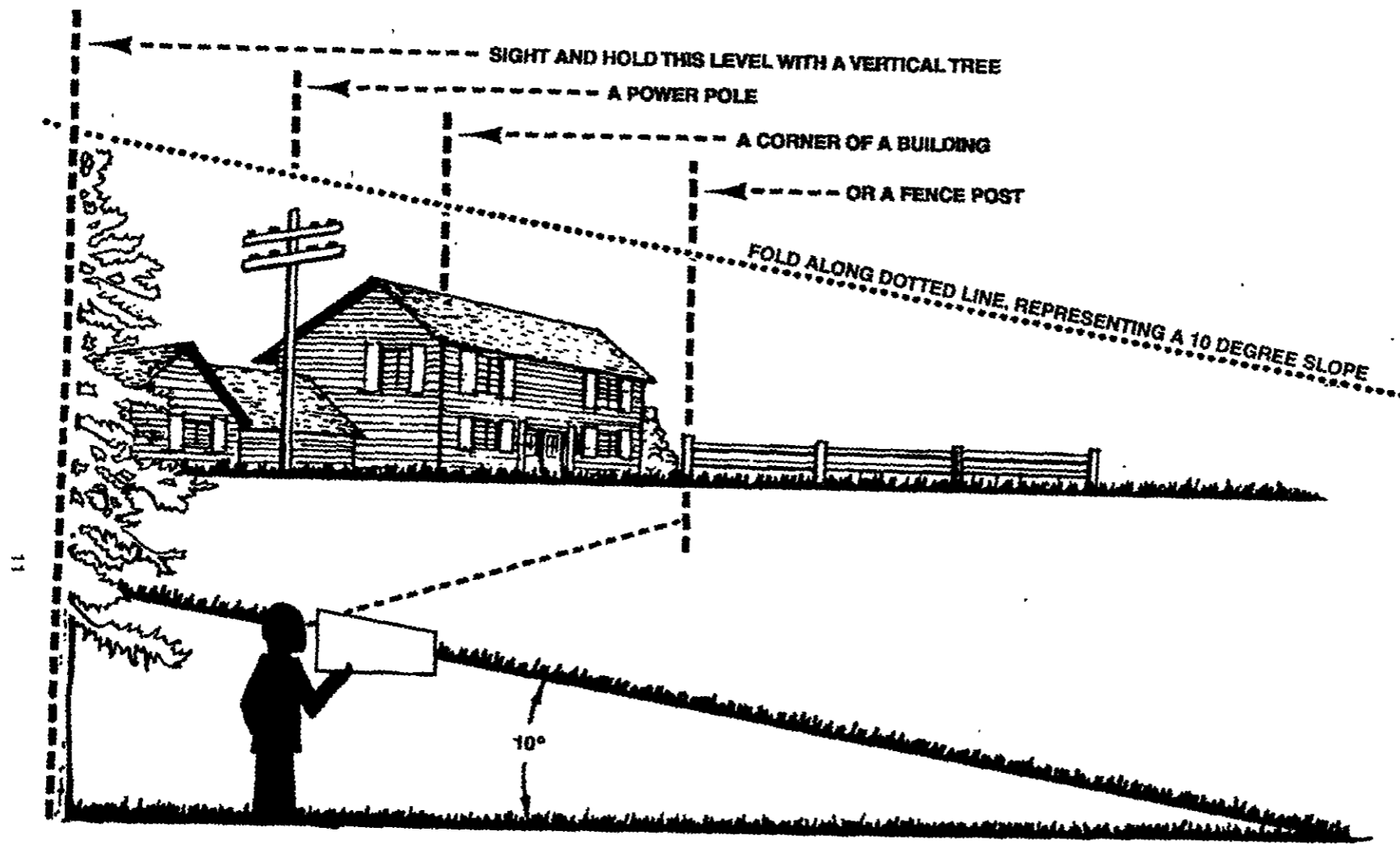
PARTS



REF NO	PART NO	QTY	DESCRIPTION	REF NO	PART NO	QTY	DESCRIPTION
1	47019	1	Poly Tray	19	43088	8	Washer, Flat 1/4" Std. Wrt.
2	23026	1	Axle, 3/4"	20	43001	2	Hex Bolt, 3/8-16 x 1" Lg. *
3	43008	2	Wheel Assembly	21	43003	2	Lock Washer, 3/8" *
4	24392	1	Tongue, Front	22	43648	2	Hex Bolt, 1/4-20 x 1-1/2" Lg. *
5	24391	1	Tongue, Rear	23	43814	8	Truss Head Bolt, 5/16-18 x 3/4" Lg.*
6	24386	1	Latch Stand Plate	24	46978	12	Hex Nut, 1/4-20 (SEMS) Type
7	23297	1	Latch Stand Bracket	25	46980	10	Hex Nut, 5/16-18 (SEMS) Type
8	47028	1	Handle Tube	26	43012	5	Hex Bolt, 1/4-20 x 3/4" *
9	24387	1	Wheel Support	27	43000	1	Extension Spring
10	62020	1	Latch Lock	28	43343	2	Hairpin, Cotter 1/8"
11	23470	2	Bracket, Latch Mounting	29	43014	2	Hub Cap
12	23918	1	Tool Holder Bracket	30	47038	1	Plastic Cap
13	23014	1	Hitch Bracket	31	43063	2	Hex Bolt, 5/16-18 x 1" Lg. *
14	24390	1	Leg Stand Bracket	32	43036	1	Hex Bolt, 3/8-16 x 4" Lg. *
15	43010	2	Cotter Pin, 1/8" Dia. x 1"	33	46699	4	Hex Bolt, 1/4-20 x 2" Lg. *
16	43009	4	Washer, Flat 3/4" 1.59" OD x .78" ID	34	1509-69	2	Hex Bolt, 1/4-20 x 1-3/4" Lg. *
17	43013	1	Hex Lock Nut 1/4-20 Thread *	35	47029	1	Clevis Pin, 3/8" x 4"
18	43082	3	Hex Lock Nut, 3/8-16 Thread *	36	45091	1	Clevis Pin 3/8" x 1"
					47304	1	Owner's Manual

SLOPE GUIDE

(Keep this sheet in a safe place for future reference.)
Use this guide to determine if a slope is safe for the operation of your tractor and cart. Refer also to the instructions in your vehicle owners manual.



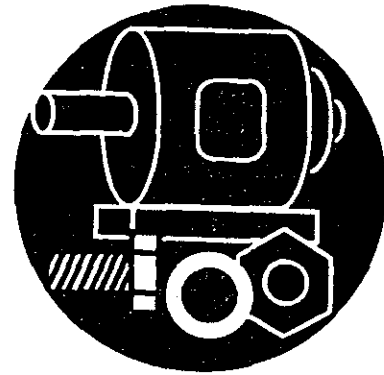
CAUTION: DO NOT OPERATE YOUR TRACTOR AND CART ON A SLOPE IN EXCESS OF 10 DEGREES. BE SURE OF YOUR TRACTOR'S TOWING AND BRAKING CAPABILITIES BEFORE OPERATING ON A SLOPE. AVOID ANY SUDDEN TURNS OR MANEUVERS WHILE ON A SLOPE.

For the repair or replacement parts you need delivered directly to your home

Call 7 am - 7 pm, 7 days a week

1-800-366-PART

(1-800-366-7278)



For in-home major brand repair service

Call 24 hours a day, 7 days a week

1-800-4-REPAIR

(1-800-473-7247)



For the location of a Sears Parts and Repair Center in your area

Call 24 hours a day, 7 days a week

1-800-488-1222



For information on purchasing a Sears Maintenance Agreement or to inquire about an existing Agreement

Call 9 am - 5 pm, Monday-Saturday

1-800-827-6655



When requesting service or ordering parts, always provide the following information:

- Product Name
- Part Name
- Model Number
- Part Number

SEARS
REPAIR SERVICES
America's Repair Specialists