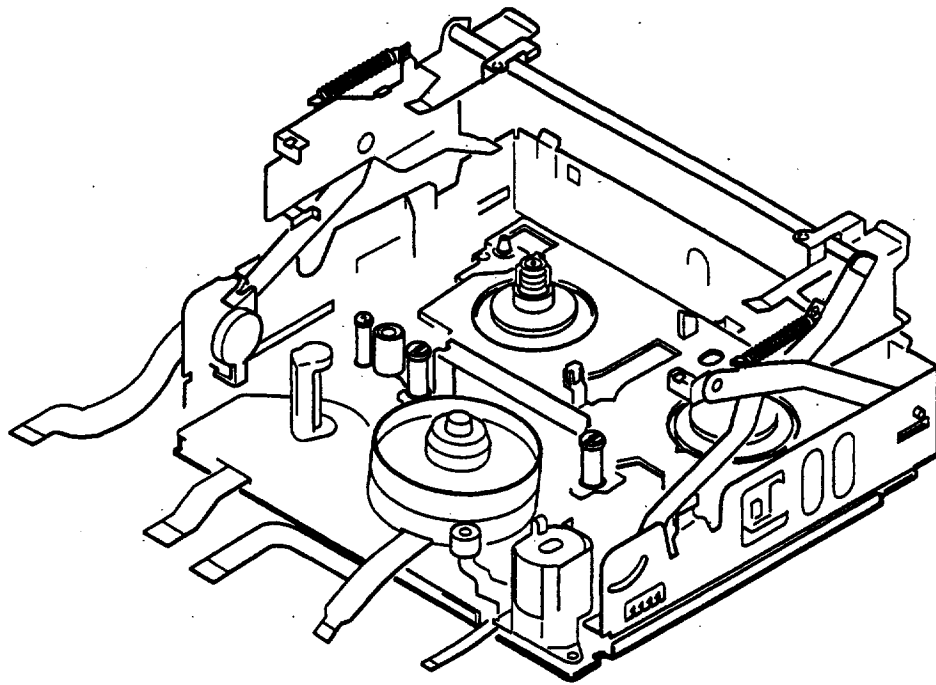


NEW TECHNICAL THEORY FOR SERVICING

Video8

B MECHANISM OPERATION MANUAL



8 MECHANISM DECK
SONY

CONTENTS

1. Main parts layout diagram	4
2. Operation of main parts	5
3. Operation of each part	6
3-1. Driving of LS chassis	6
3-2. Driving of pinch roller	8
3-3. Driving of tension regulator and TG1	10
3-4. Driving of S reel and S ratchet	12
3-5. Driving of T ratchet and T soft gear	14
4. Operation in each mode	17
4-1. Cassette IN \rightleftarrows STOP	17
4-2. STOP \rightleftarrows PB	23
4-3. STOP \rightleftarrows REC	27
4-4. STOP \rightleftarrows FF	31
4-5. STOP \rightleftarrows REWIND	35
4-6. PB \rightleftarrows CUE	38
4-7. PB \rightleftarrows REVIEW	40
4-8. PB \rightleftarrows PAUSE	42
4-9. STOP \rightleftarrows EJECT	45

1. Main parts layout diagram

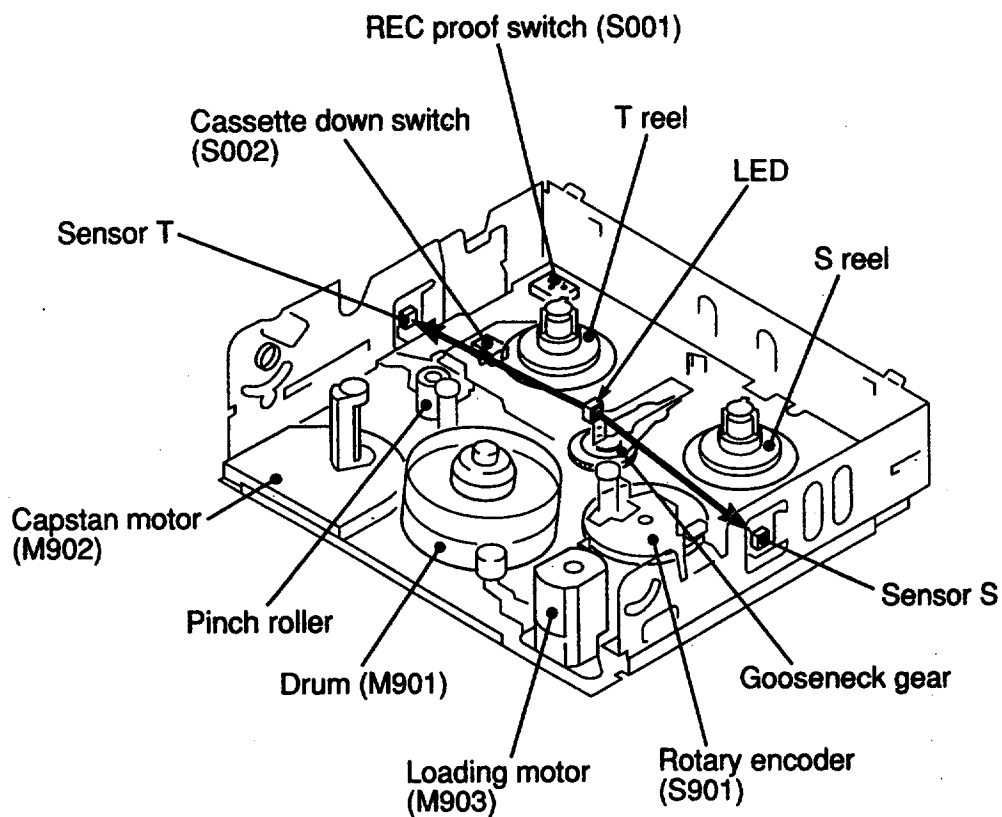


Fig. 1-1

2. Operation of main parts

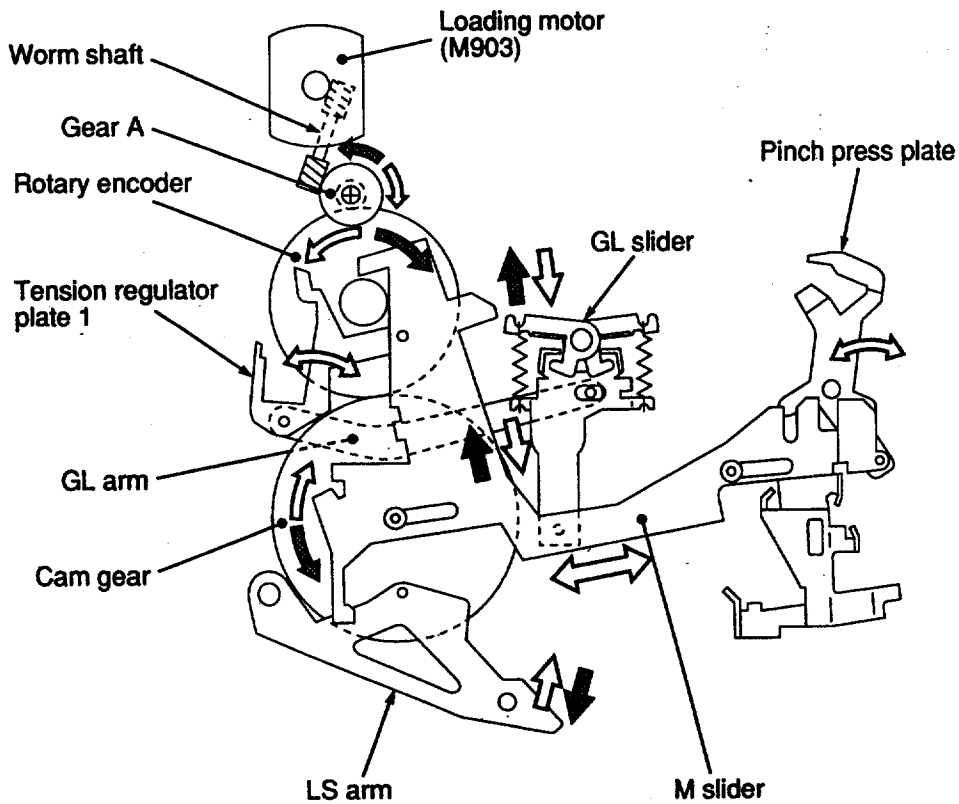
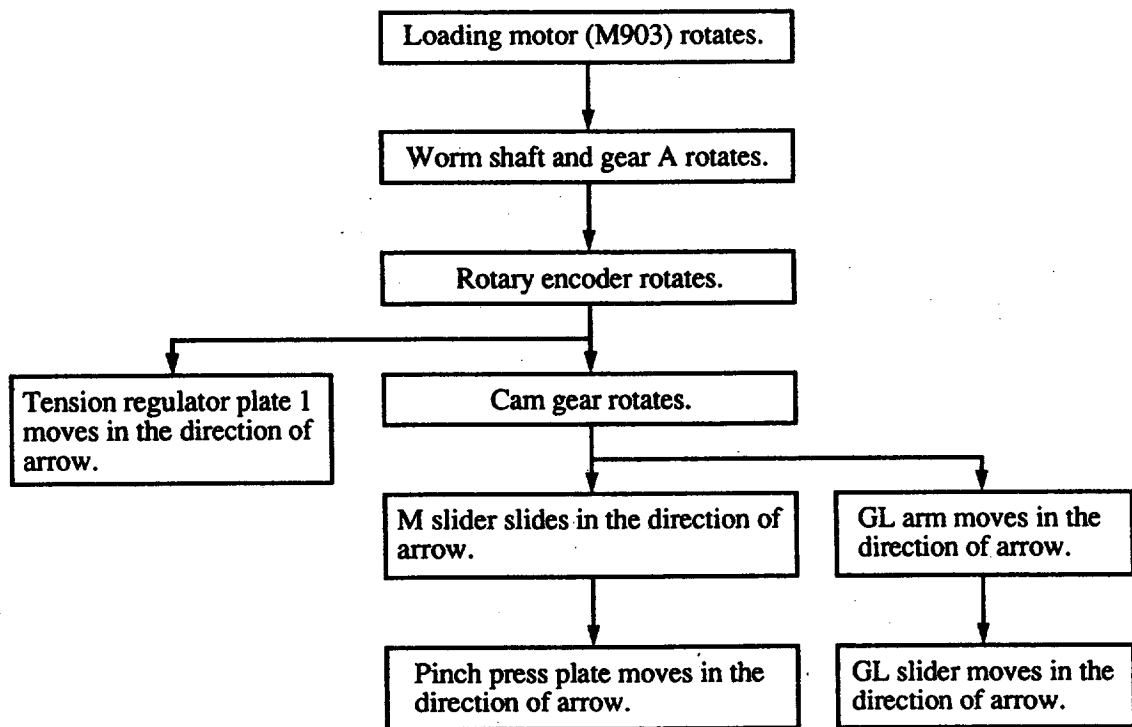
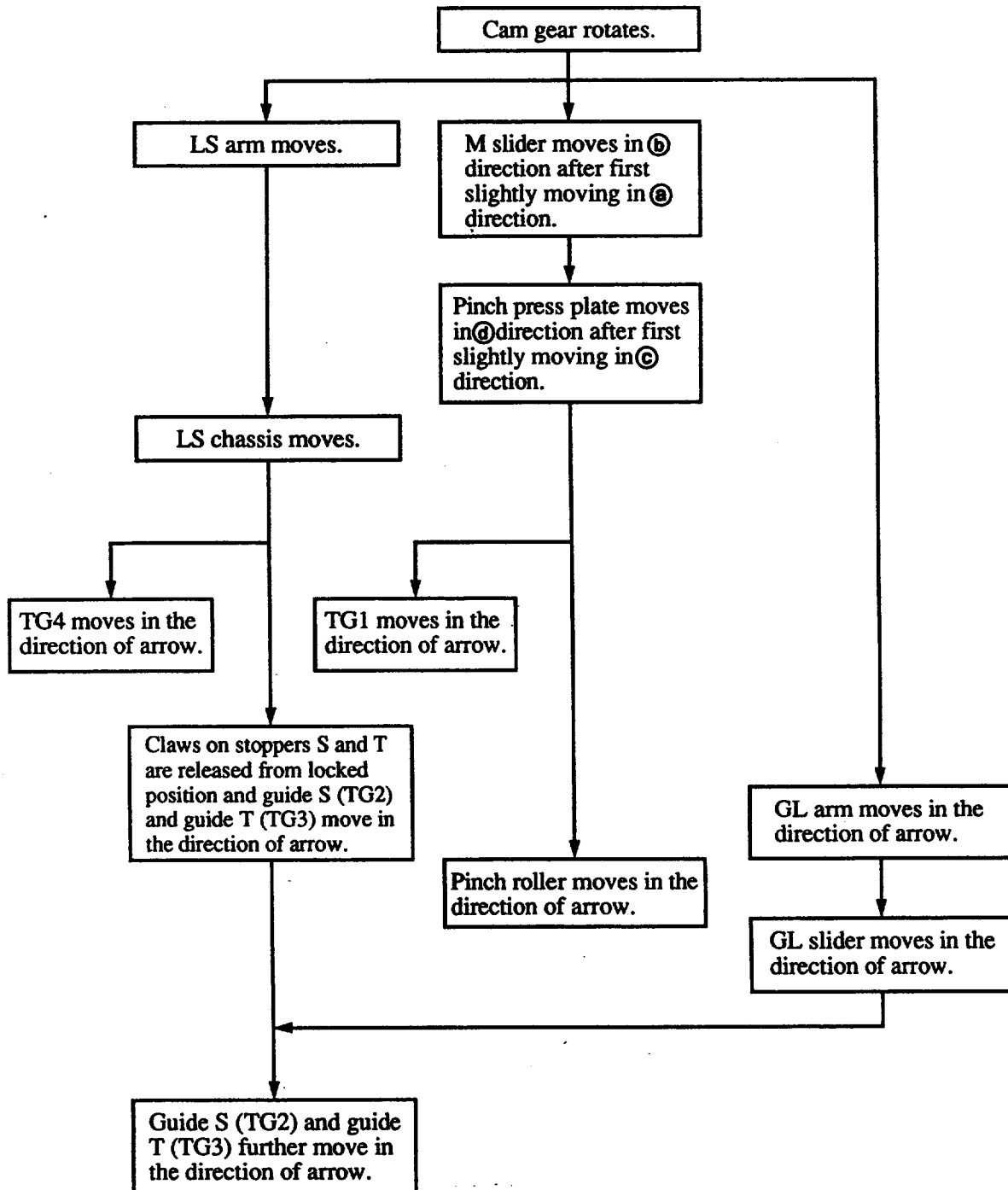


Fig. 2-1

3. Operation of each part

3-1. Driving of LS chassis



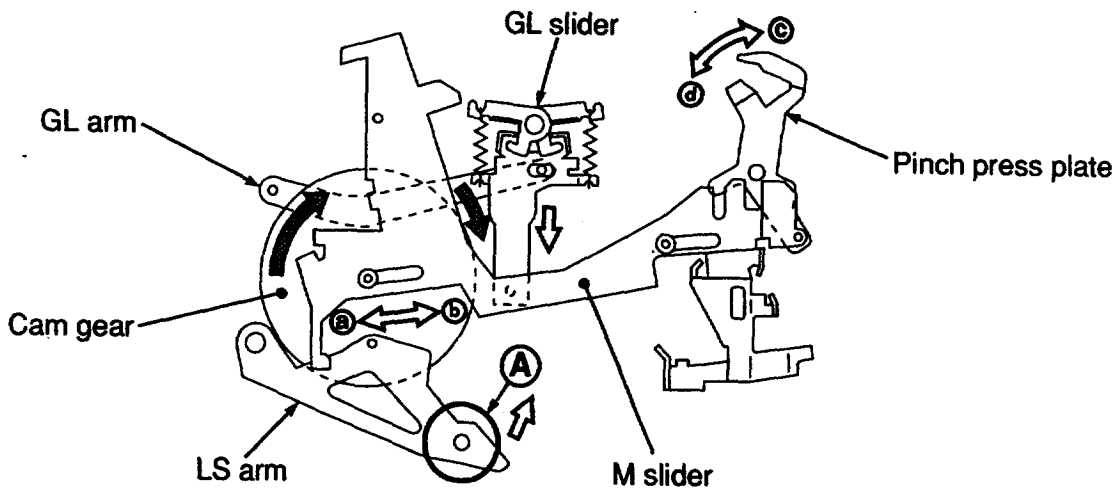


Fig. 3-1

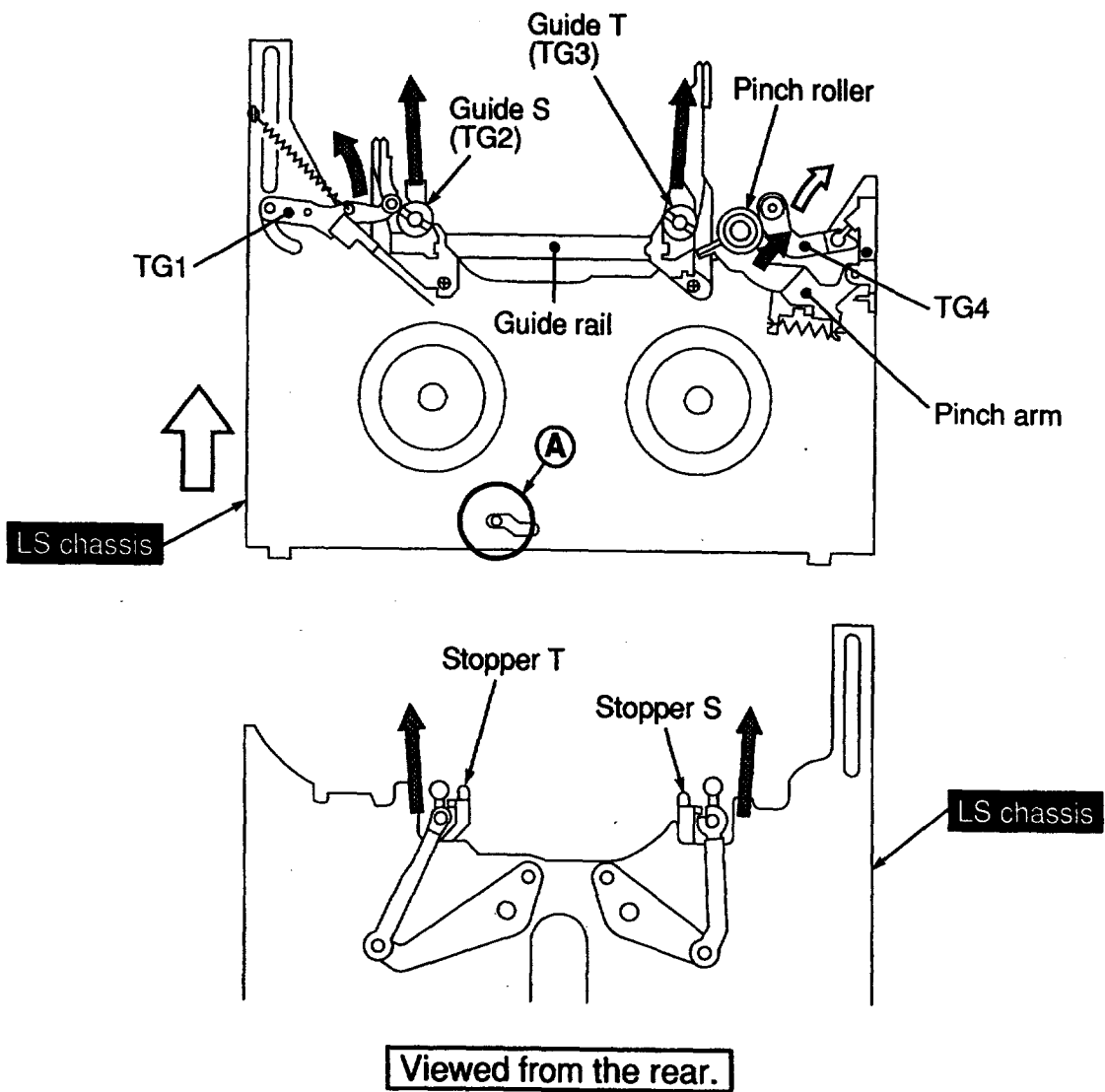
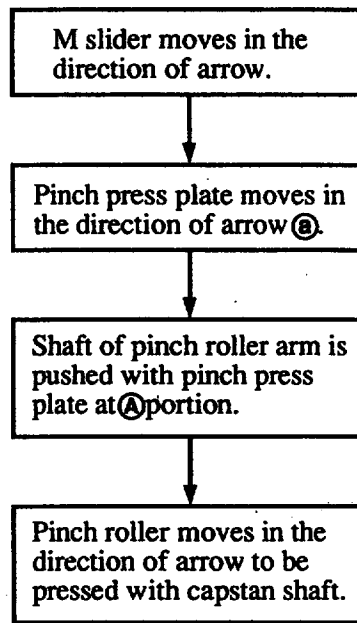


Fig. 3-2 LS chassis assembly

3-2. Driving of pinch roller



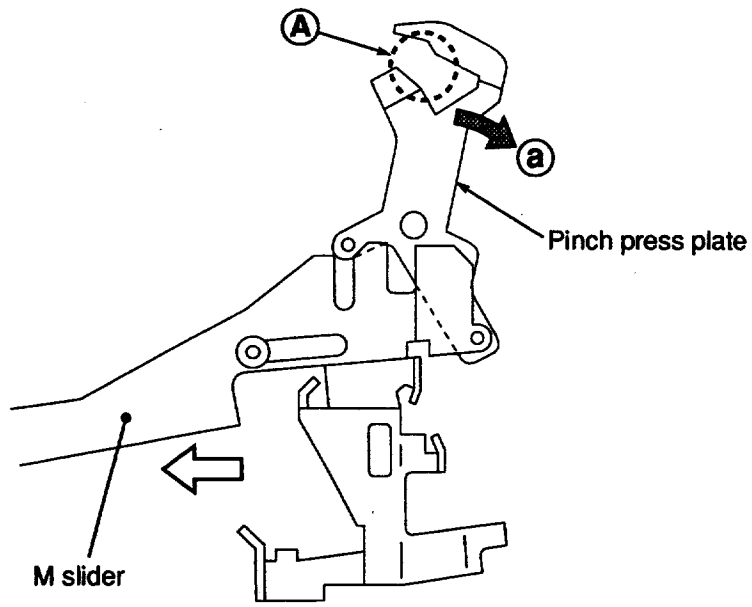


Fig. 3-3

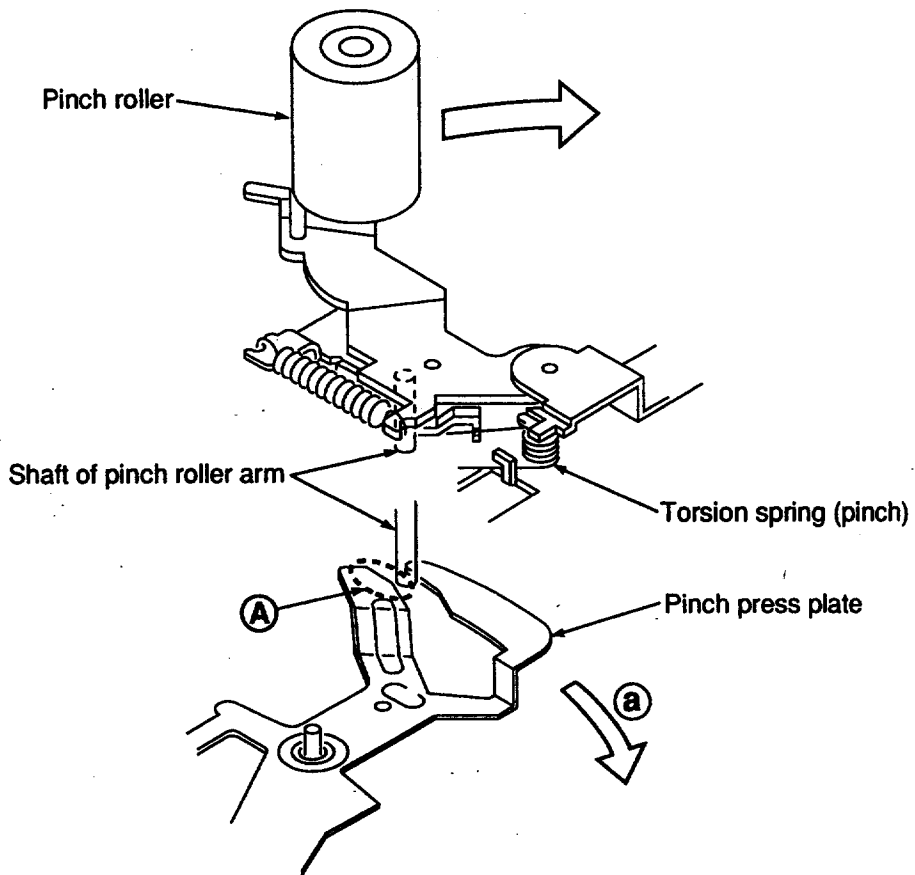
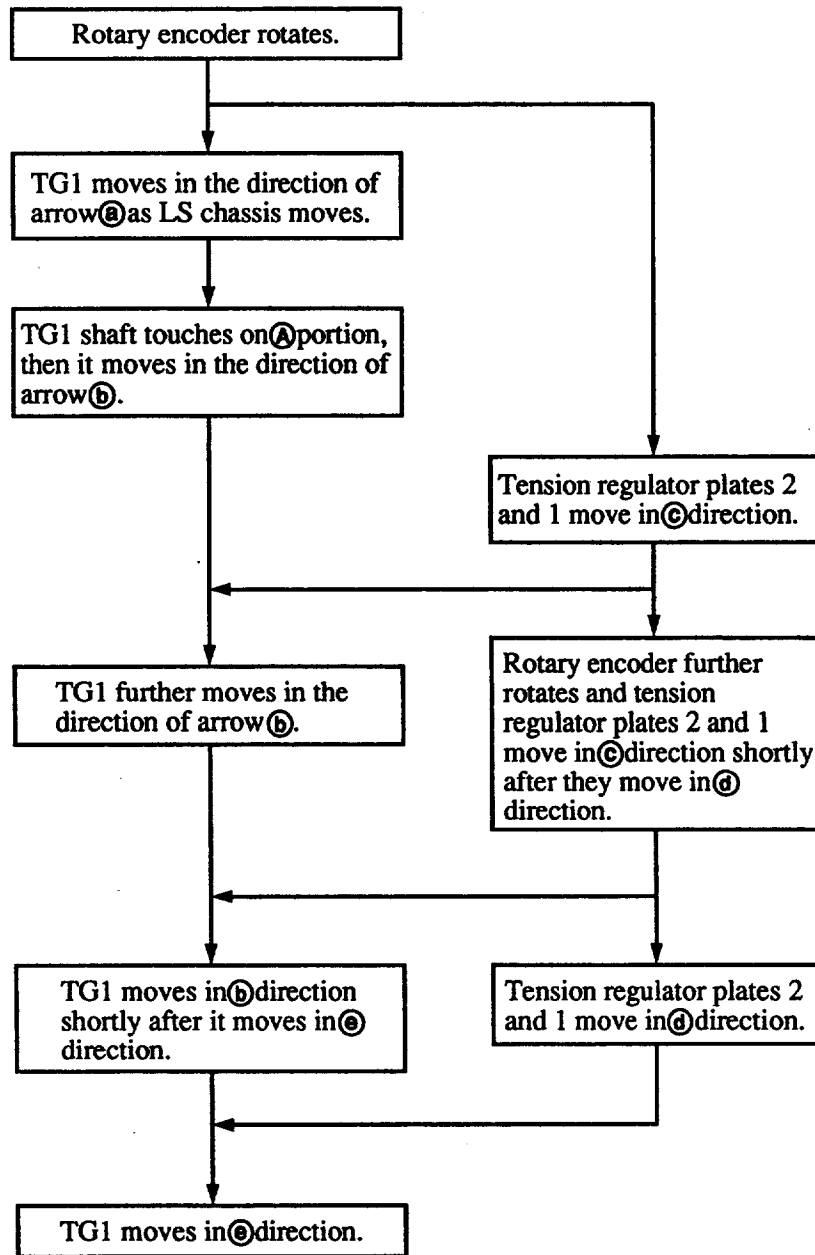


Fig. 3-4

3-3. Driving of tension regulator and TG1



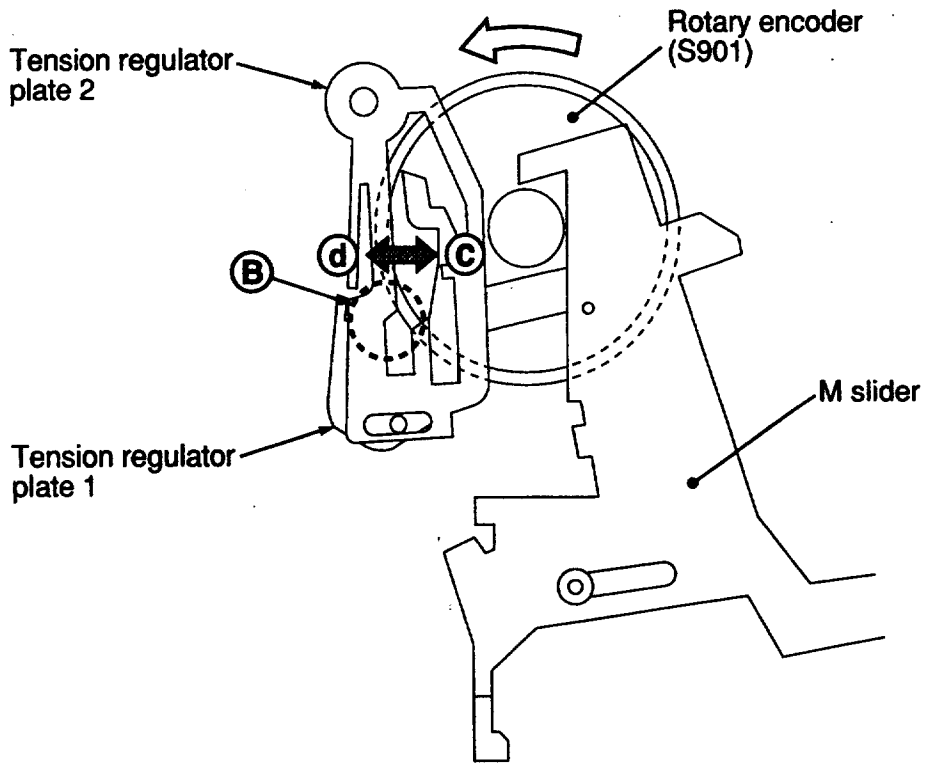


Fig. 3-5

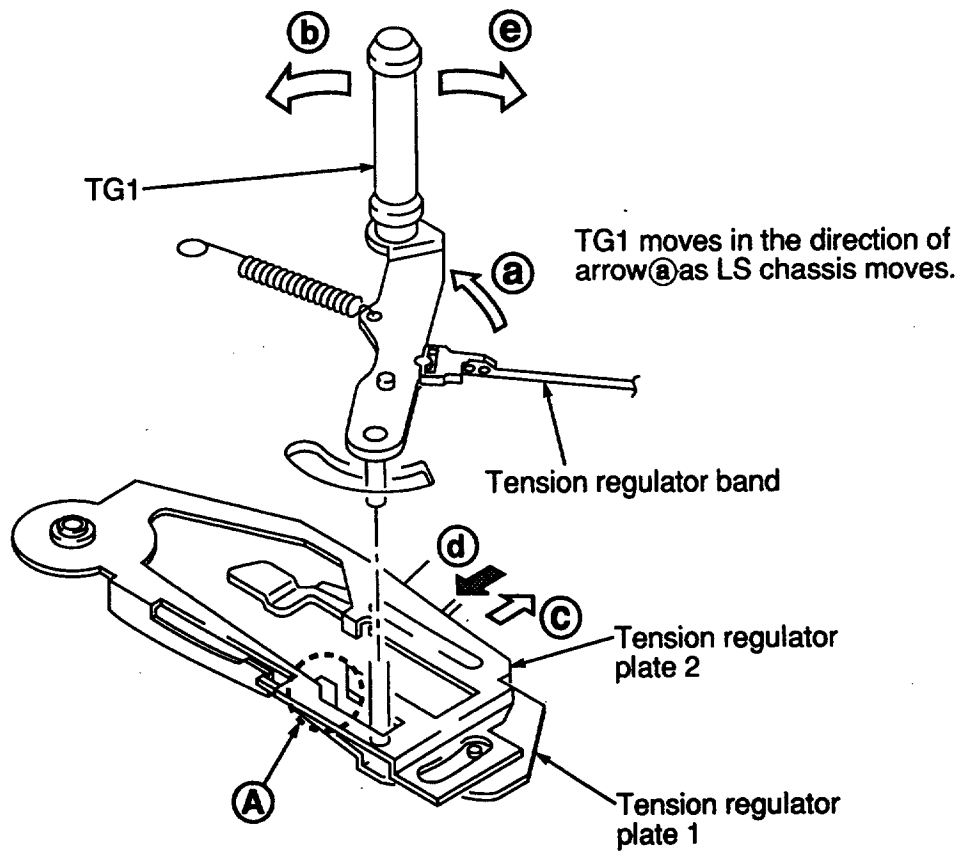
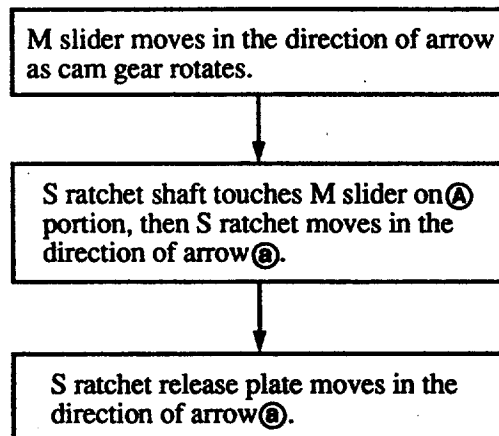


Fig. 3-6

3-4. Driving of S reel and S ratchet



* With this operation of S reel the brake is released.

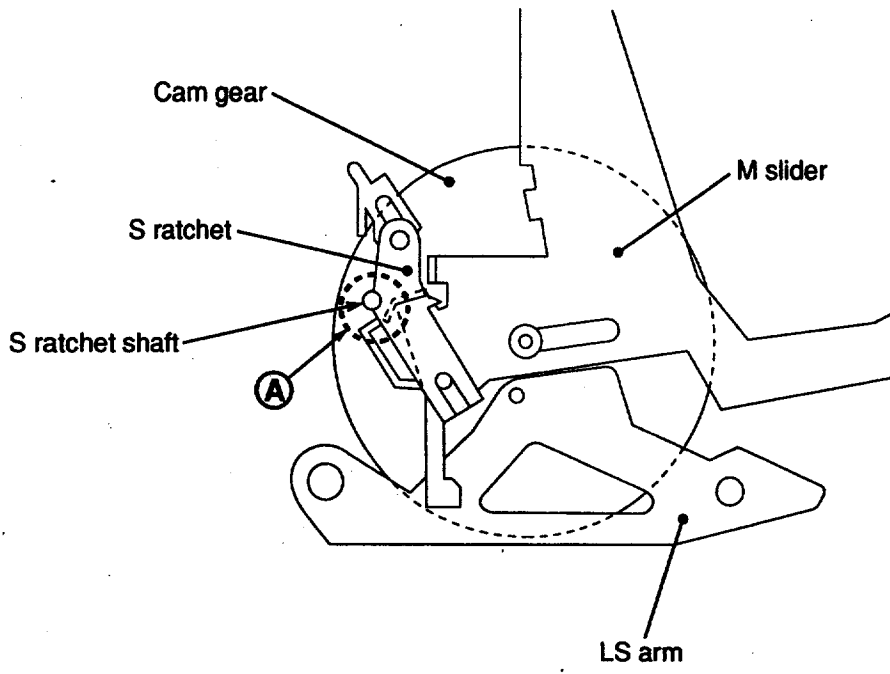


Fig. 3-7

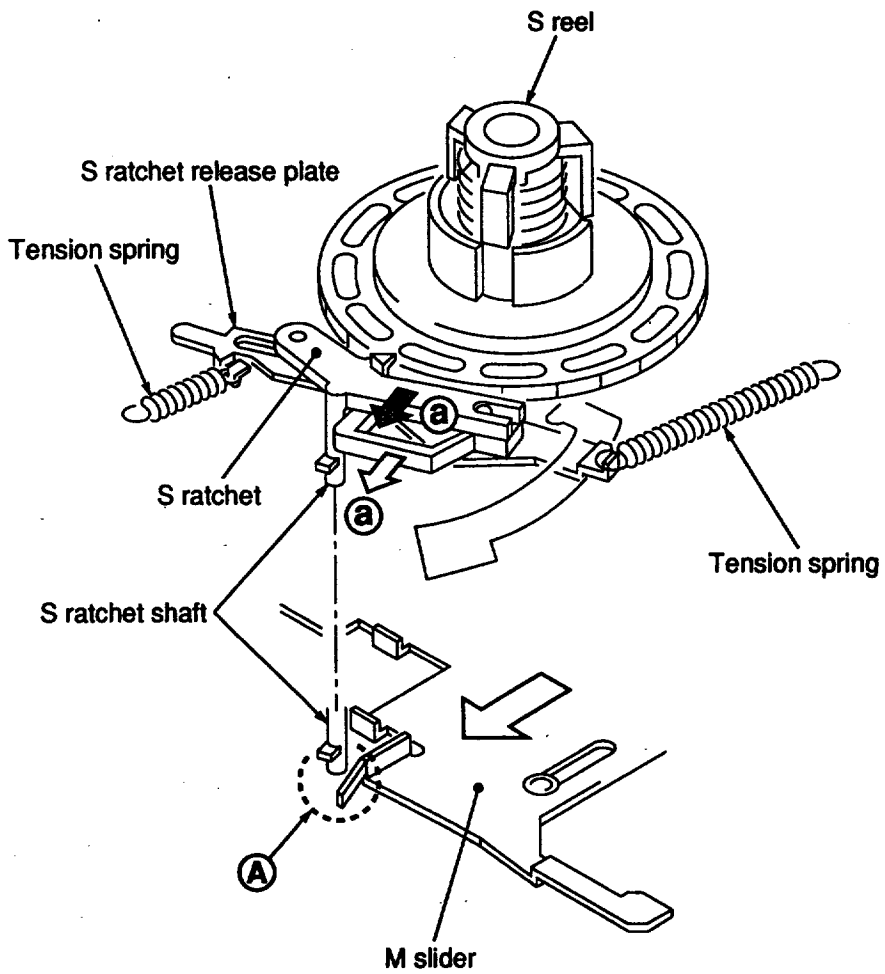
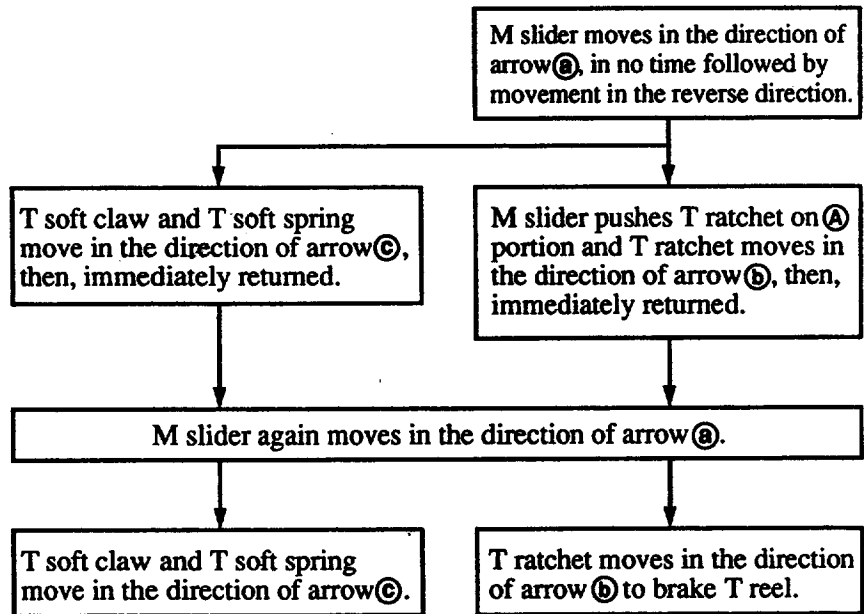


Fig. 3-8

3-5. Driving of T ratchet and T soft gear



* Under this condition T reel is locked, allowing no rotation.

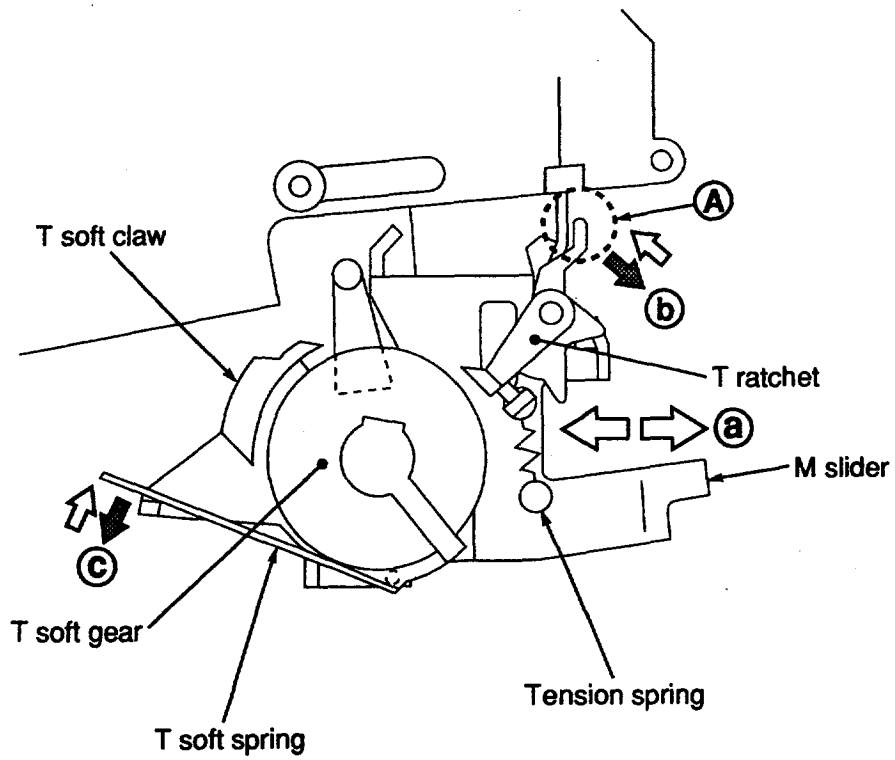


Fig. 3-9

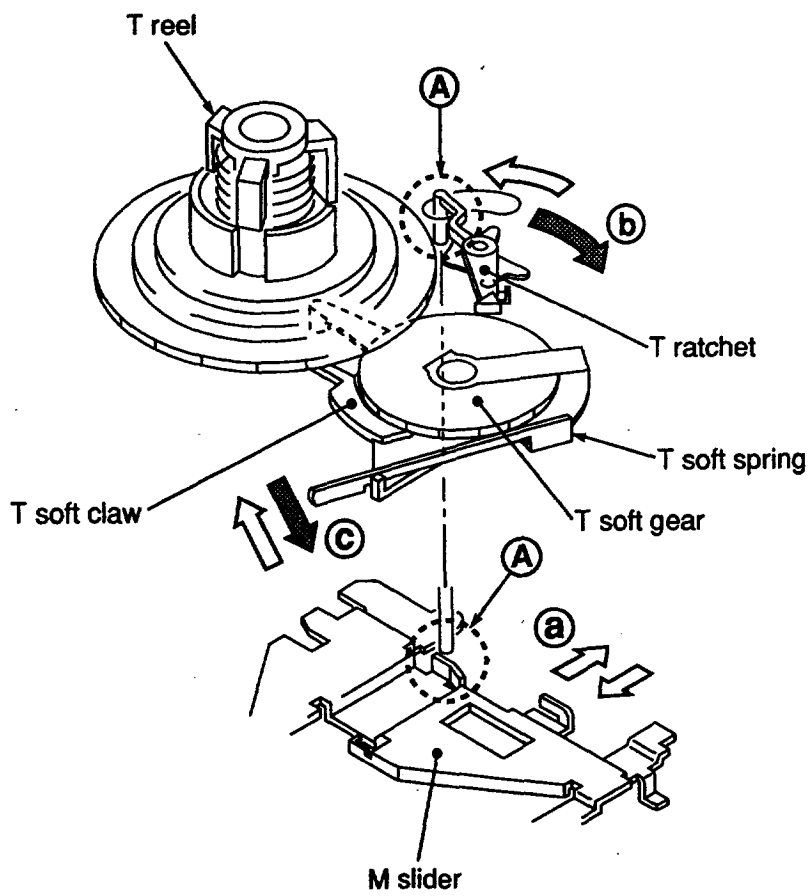


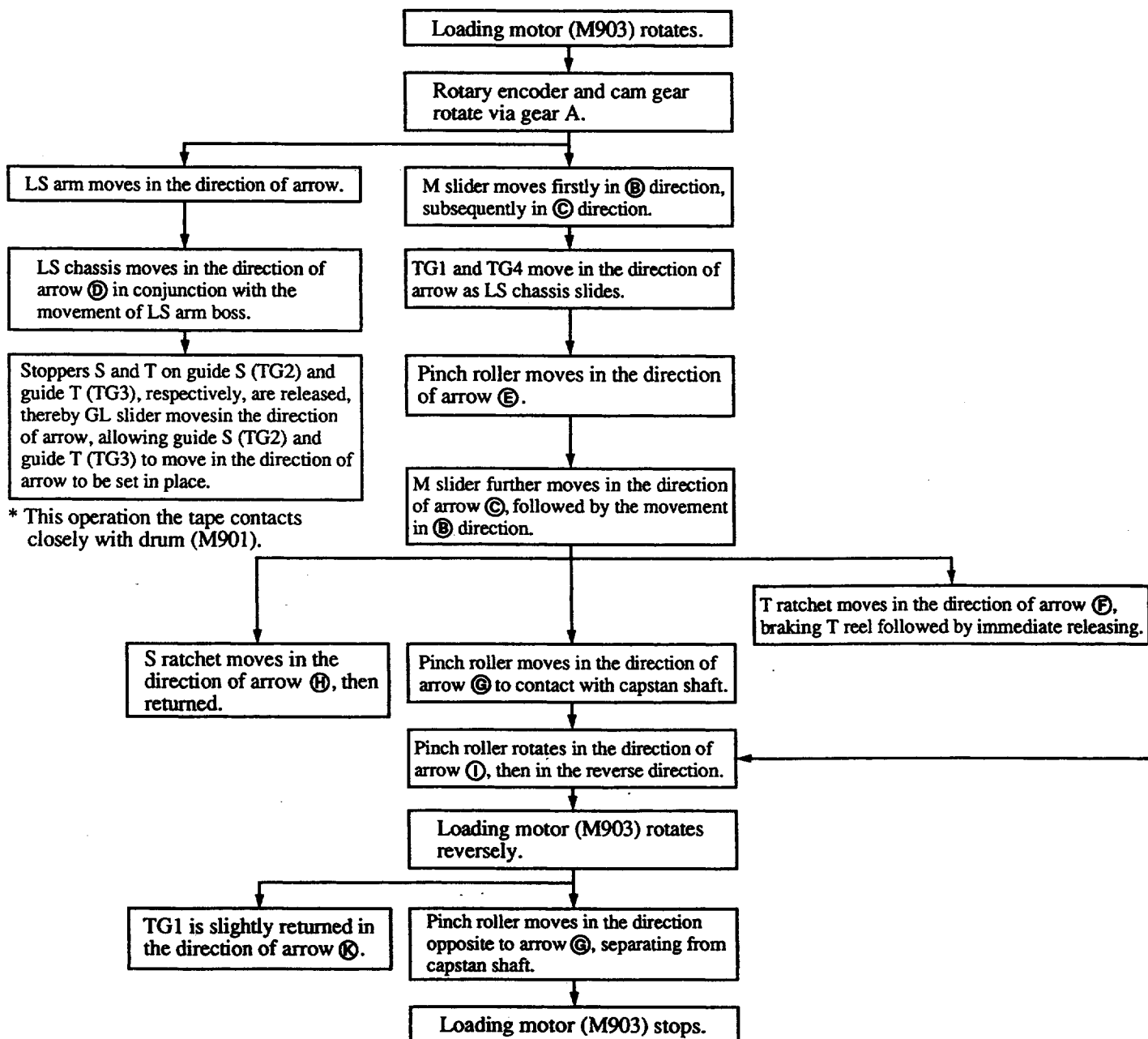
Fig. 3-10

Memo

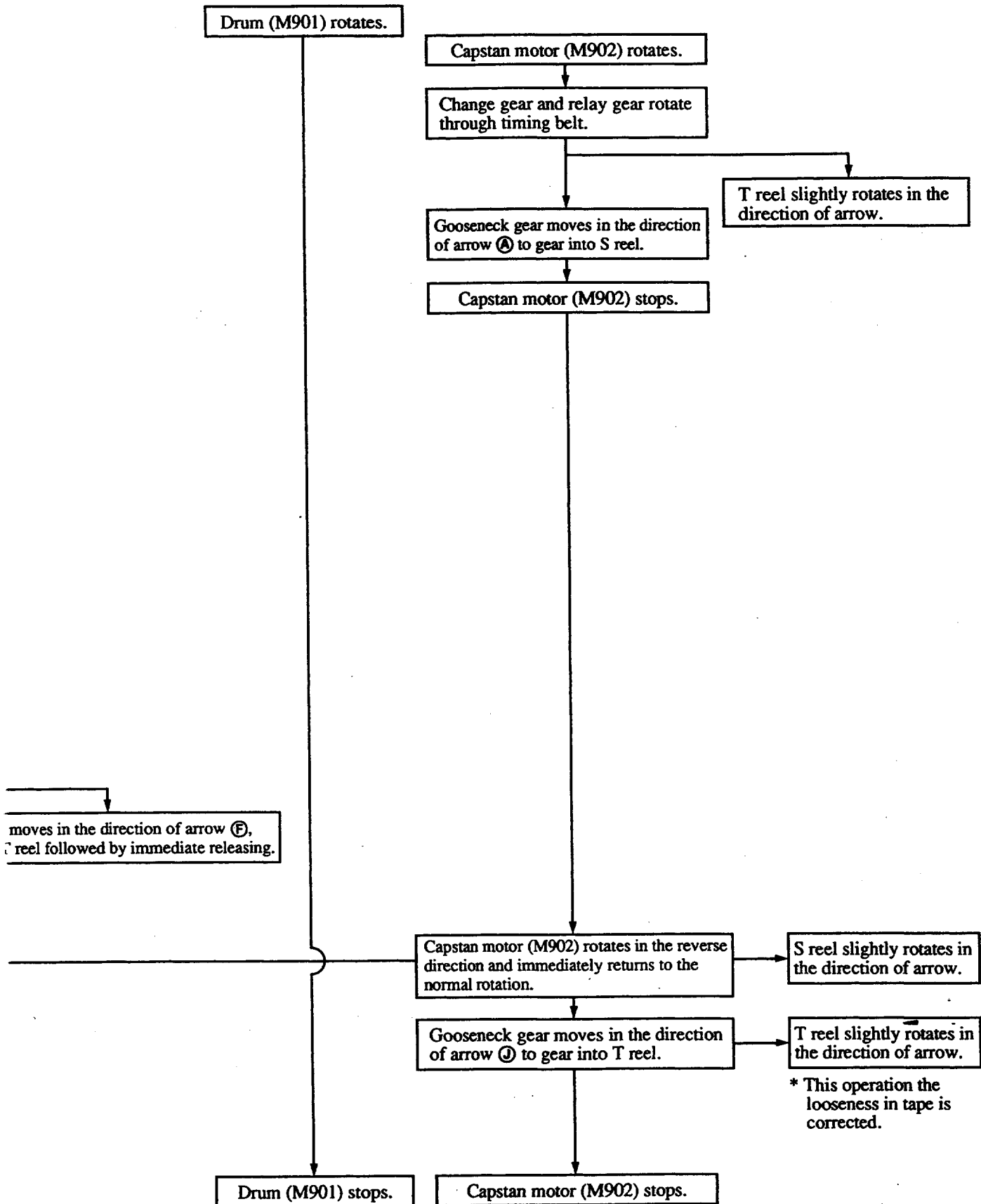
A series of horizontal dotted lines for writing.

4. Operation in each mode

4-1. Cassette IN \Longrightarrow STOP



* This operation the tape contacts closely with drum (M901).



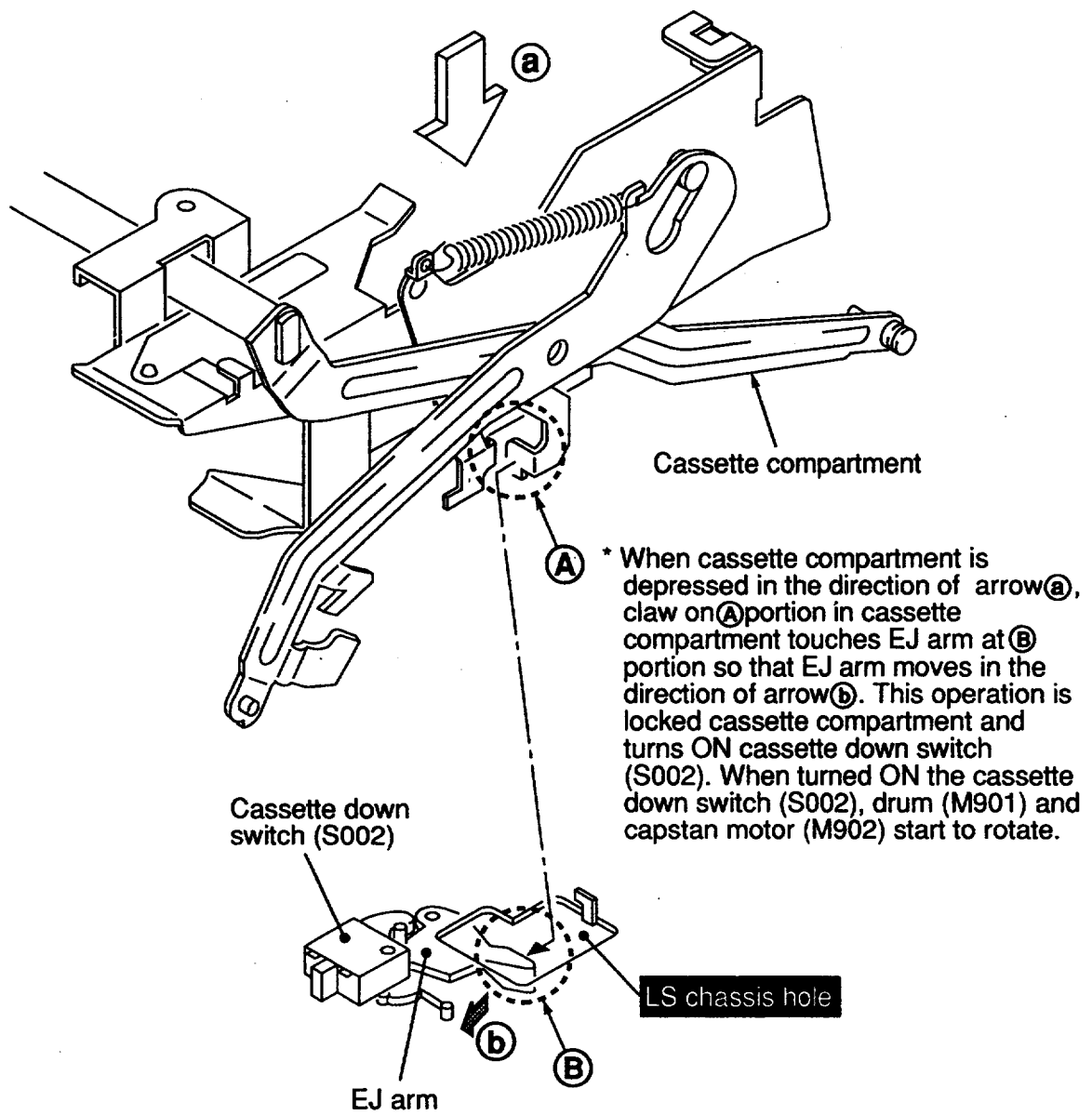


Fig. 4-1 Cassette compartment DOWN

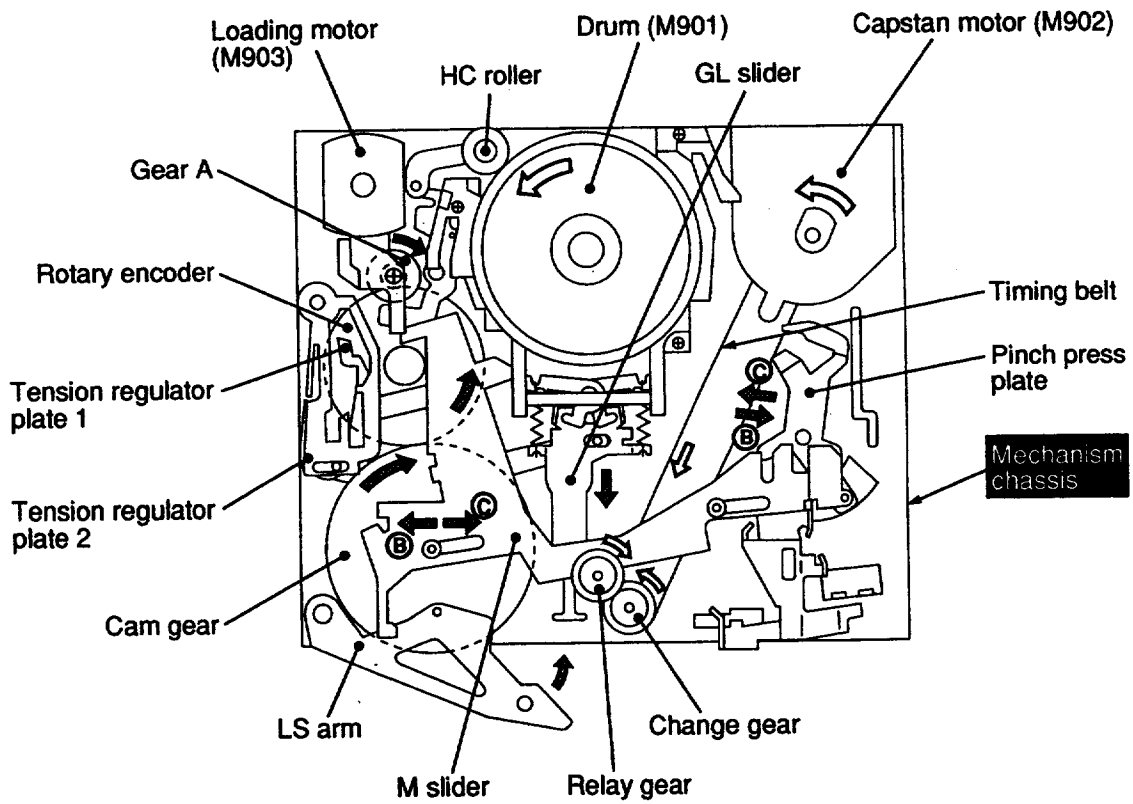


Fig. 4-2 Mechanism chassis assembly

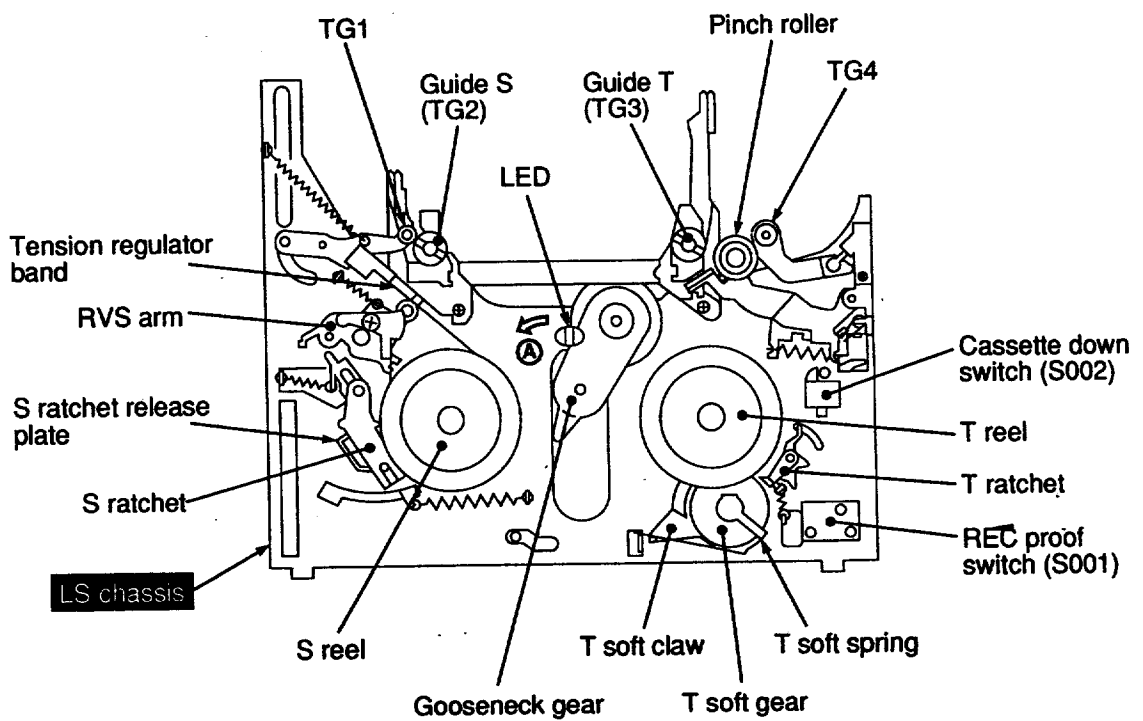


Fig. 4-3 LS chassis assembly

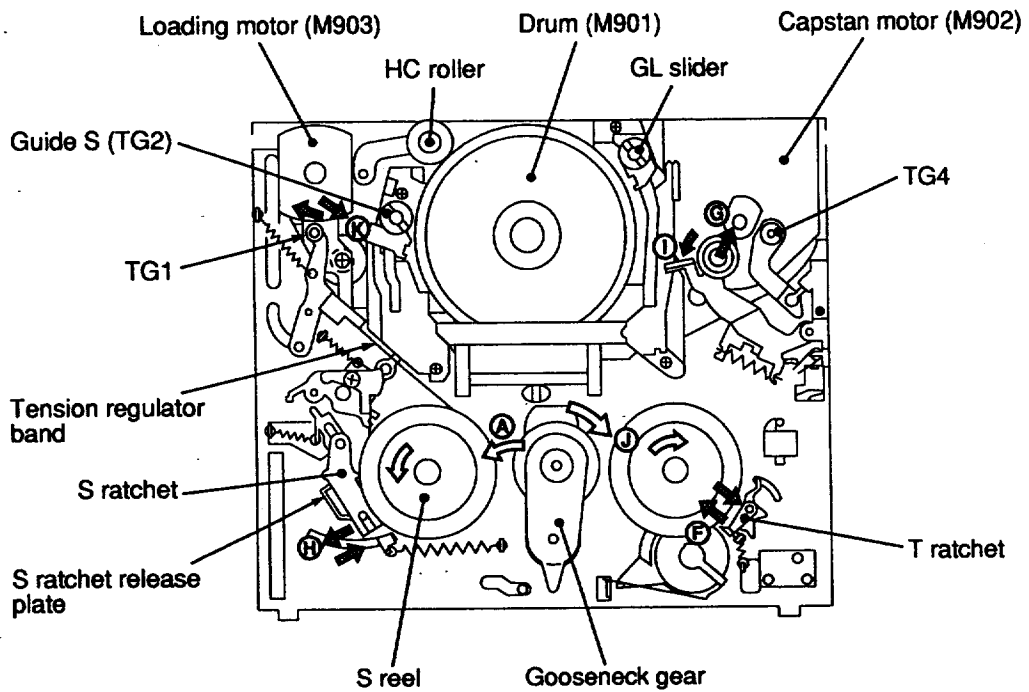
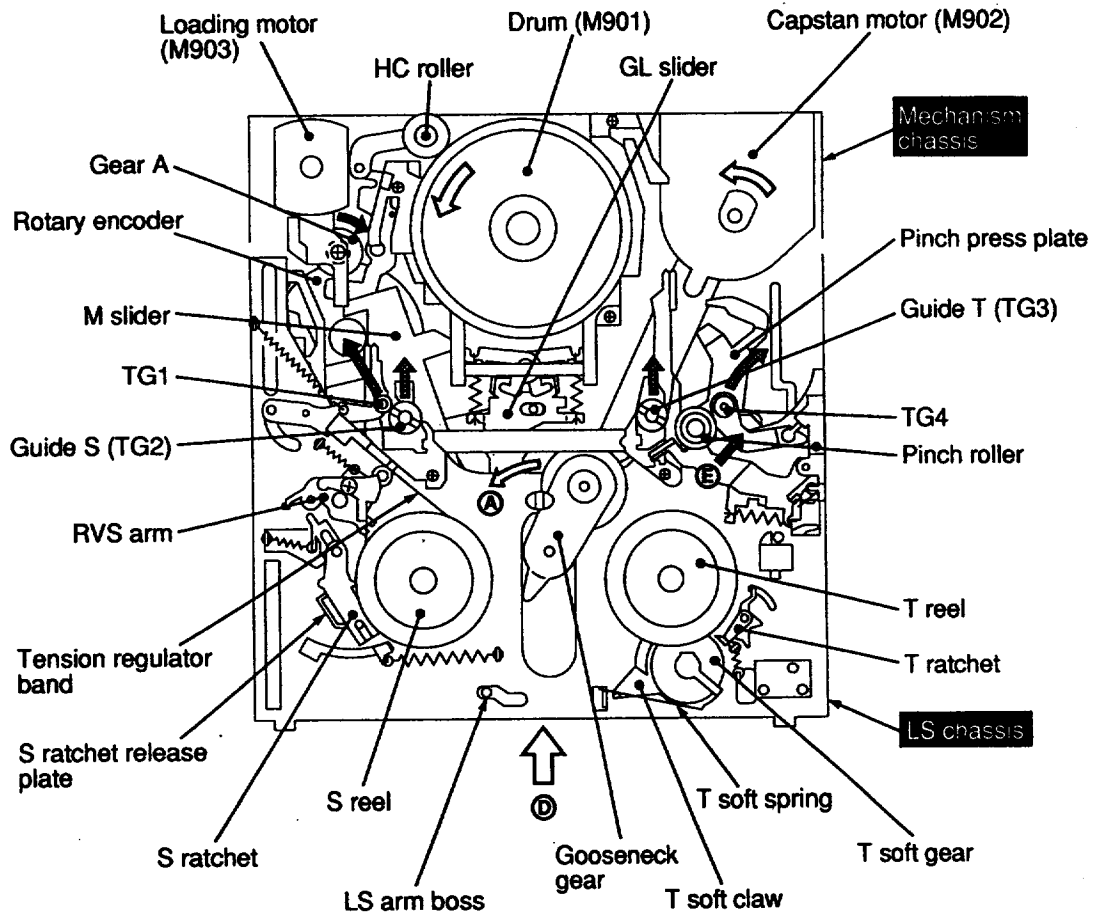
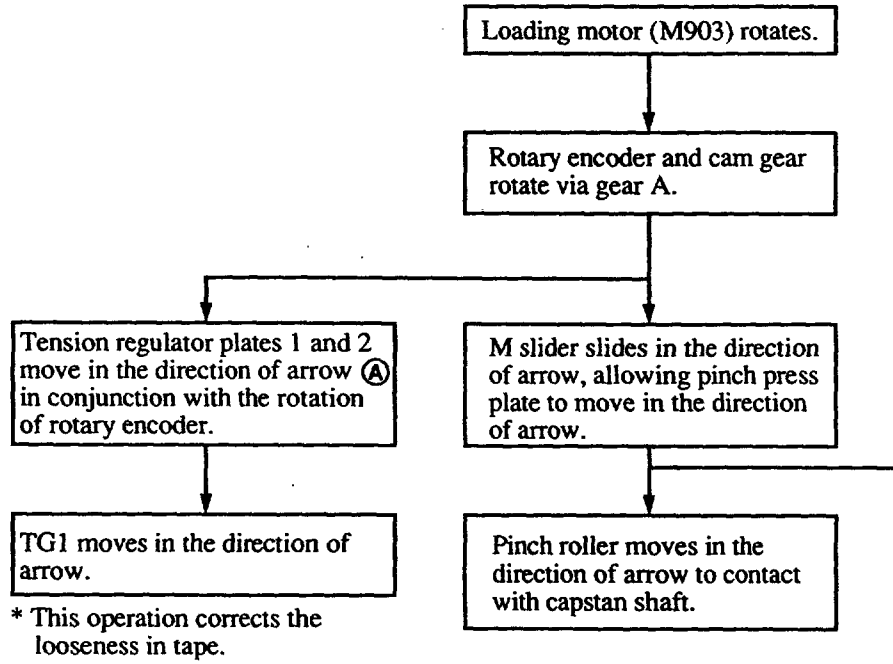


Fig. 4-4 Mechanism chassis and LS chassis assembly

4-2. STOP \Rightarrow PB



Drum (M901) rotates.

T ratchet and S ratchet move in each direction of arrows as M slider moves.

Brakes for T reel and S reel are released, allowing free rotation.

Capstan motor(M902) rotates in the direction of arrow.

Pinch roller rotates in the direction of arrow to start tape running.

Change gear and relay gear respectively rotate via timing belt.

Gooseneck gear rotates in the direction of arrow, allowing the rotation of T reel.

* This operation winds tape around T reel.

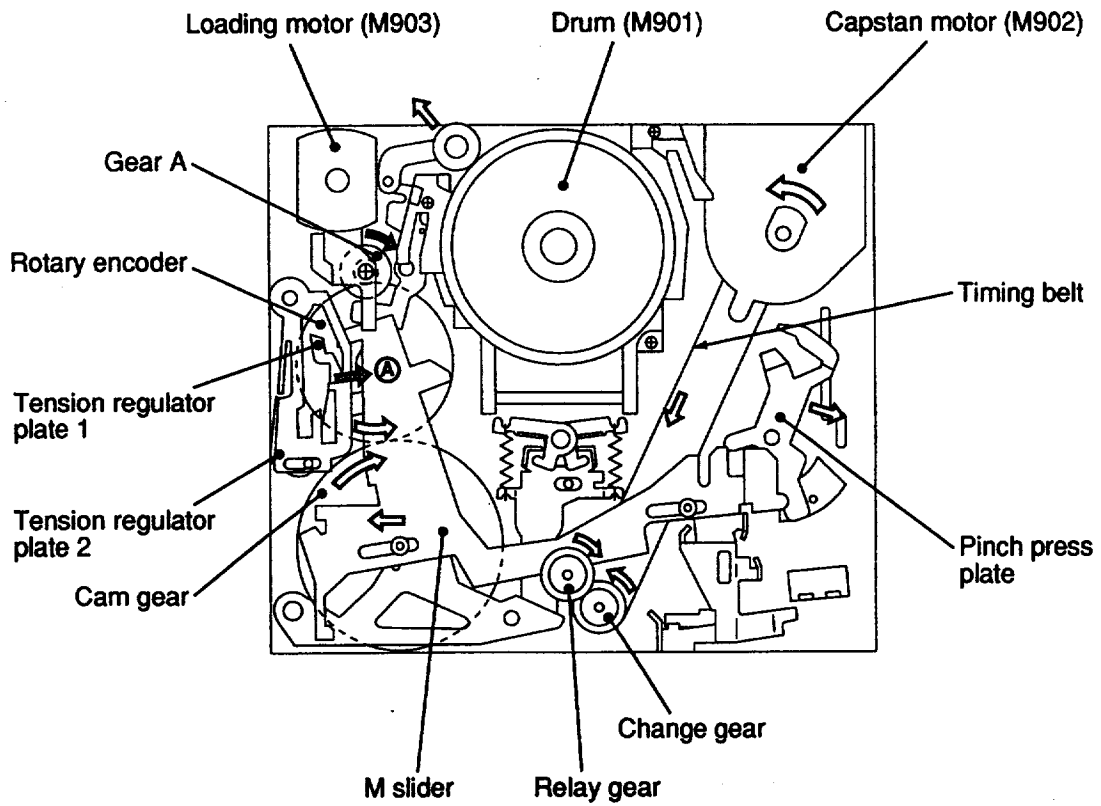


Fig. 4-5 Mechanism chassis assembly

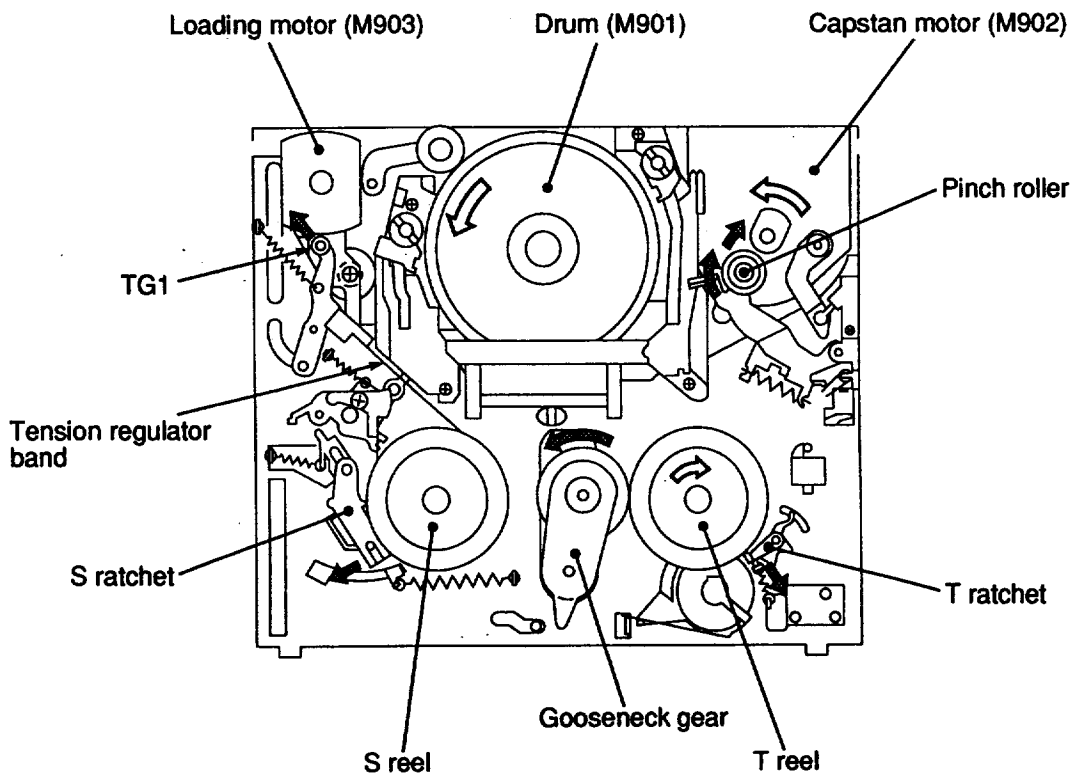
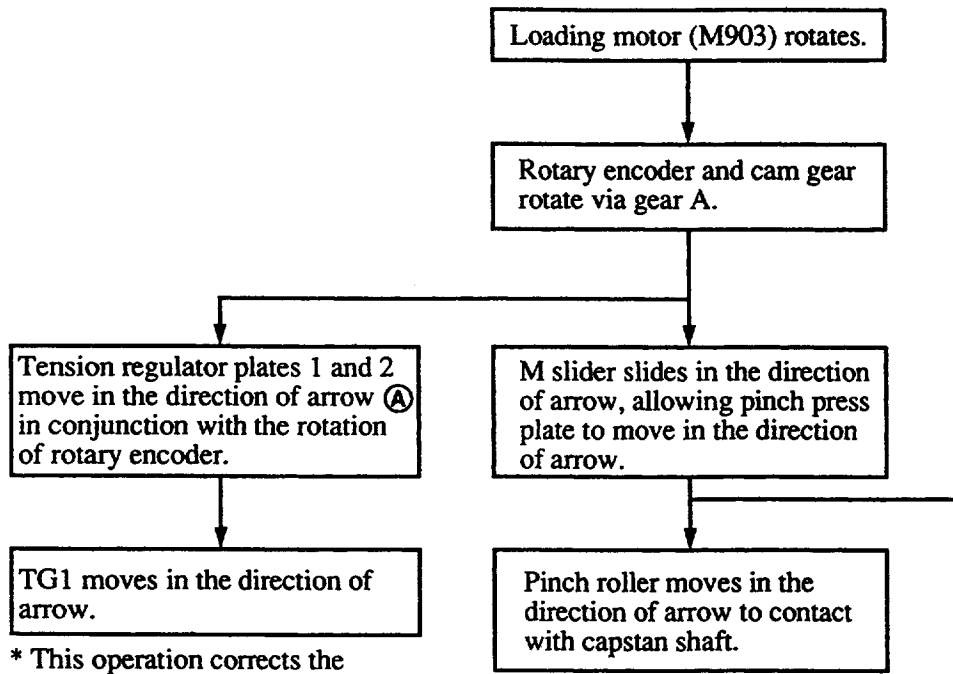


Fig. 4-6 Mechanism chassis and LS chassis assembly

4-3. STOP \Rightarrow REC



* This operation corrects the looseness in tape.

Drum (M901) rotates.

T ratchet and S ratchet move in each direction of arrows as M slider moves.

Brakes for T reel and S reel are released, allowing free rotation.

Capstan motor(M902) rotates in the direction of arrow.

Pinch roller rotates in the direction of arrow to start tape running.

Change gear and relay gear respectively rotate via timing belt.

Gooseneck gear rotates in the direction of arrow, allowing the rotation of T reel.

* This operation winds tape around T reel.

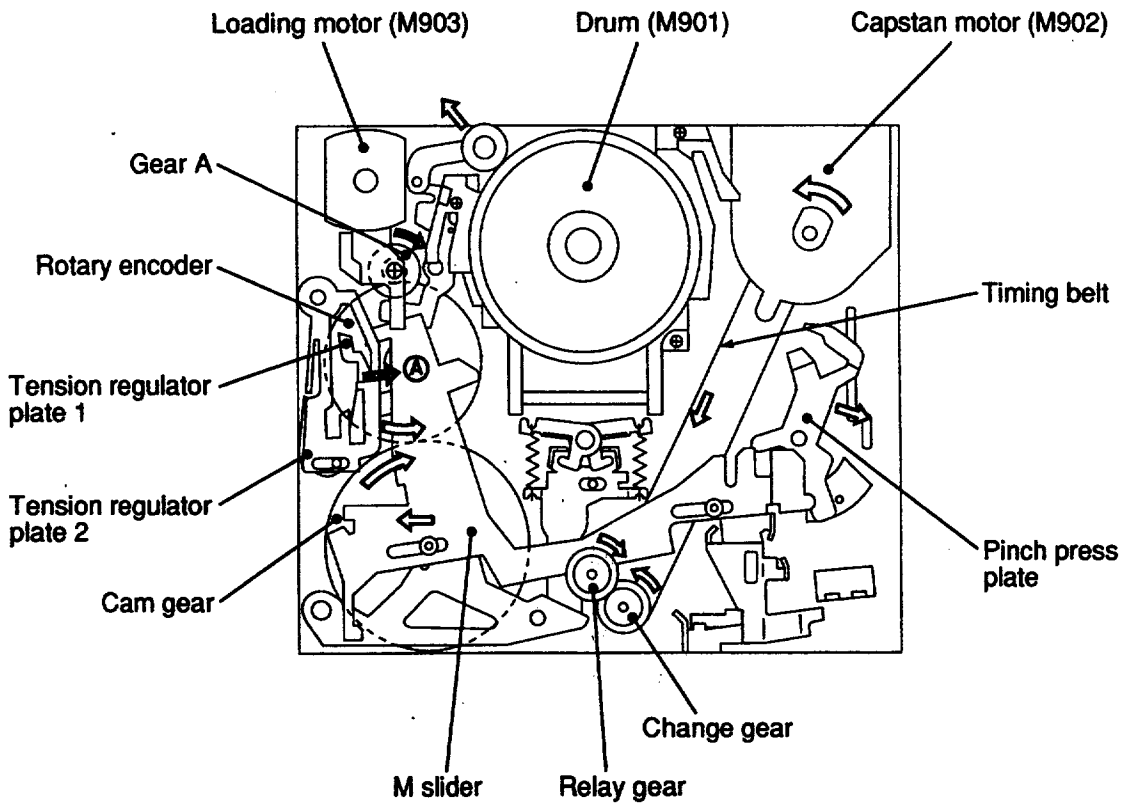


Fig. 4-7 Mechanism chassis assembly

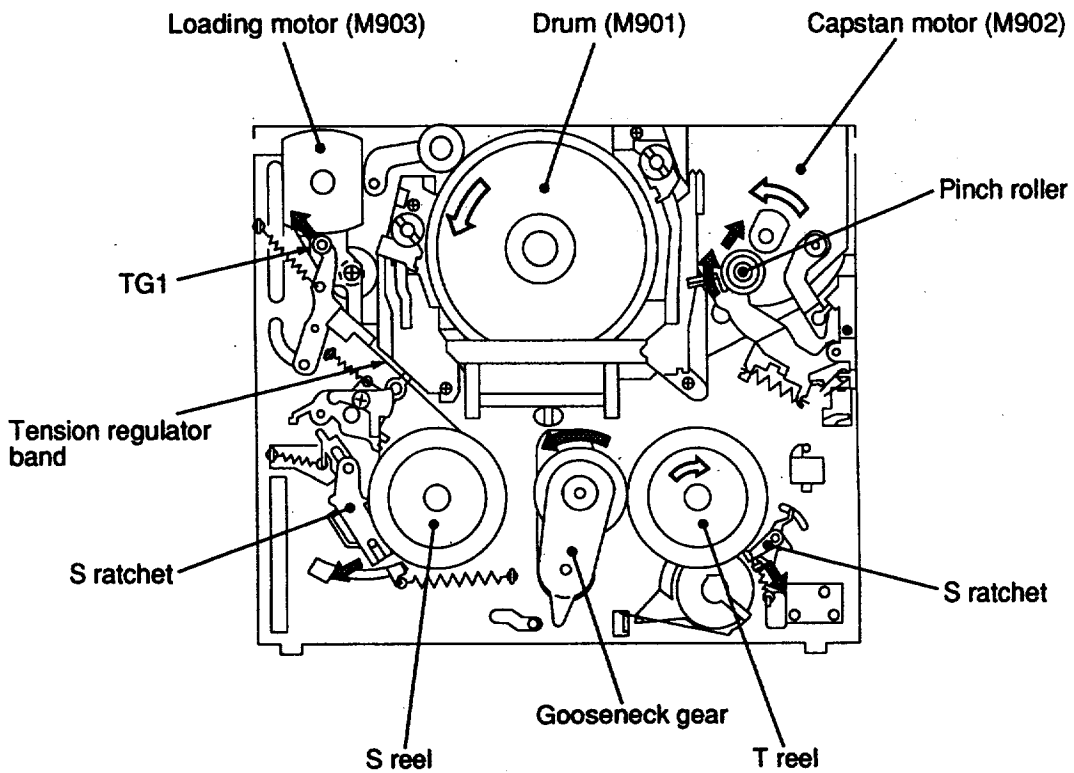
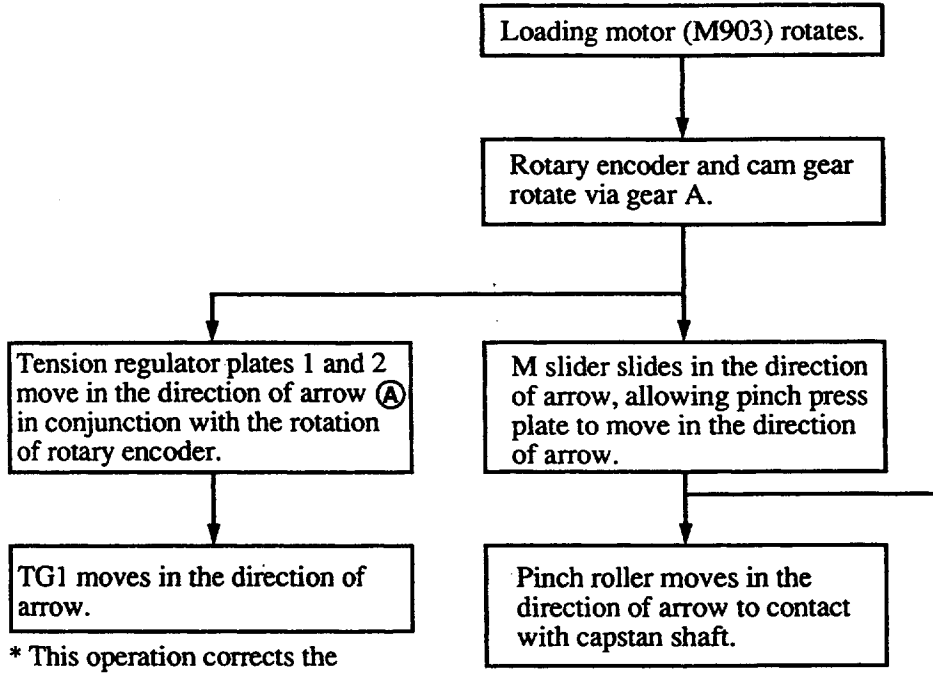


Fig. 4-8 Mechanism chassis and LS chassis assembly

Memo

.....
.....
.....
.....
.....
.....
.....
.....
.....
.....
.....
.....
.....
.....
.....
.....
.....
.....
.....
.....
.....
.....
.....
.....
.....
.....
.....
.....
.....
.....
.....
.....
.....
.....
.....
.....
.....
.....
.....
.....
.....
.....
.....
.....
.....
.....
.....
.....
.....
.....
.....
.....
.....

4-4. STOP \Longrightarrow FF



* This operation corrects the looseness in tape.

Drum (M901) rotates.

T ratchet and S ratchet move in each direction of arrows as M slider moves.

Brakes for T reel and S reel are released, allowing free rotation.

Capstan motor (M902) rotates in the direction of arrow at the high speed.

Pinch roller rotates in the direction of arrow to start tape running.

Change gear and relay gear respectively rotate via timing belt.

Gooseneck gear rotates in the direction of arrow, allowing the rotation of T reel.

* This operation winds tape around T reel.

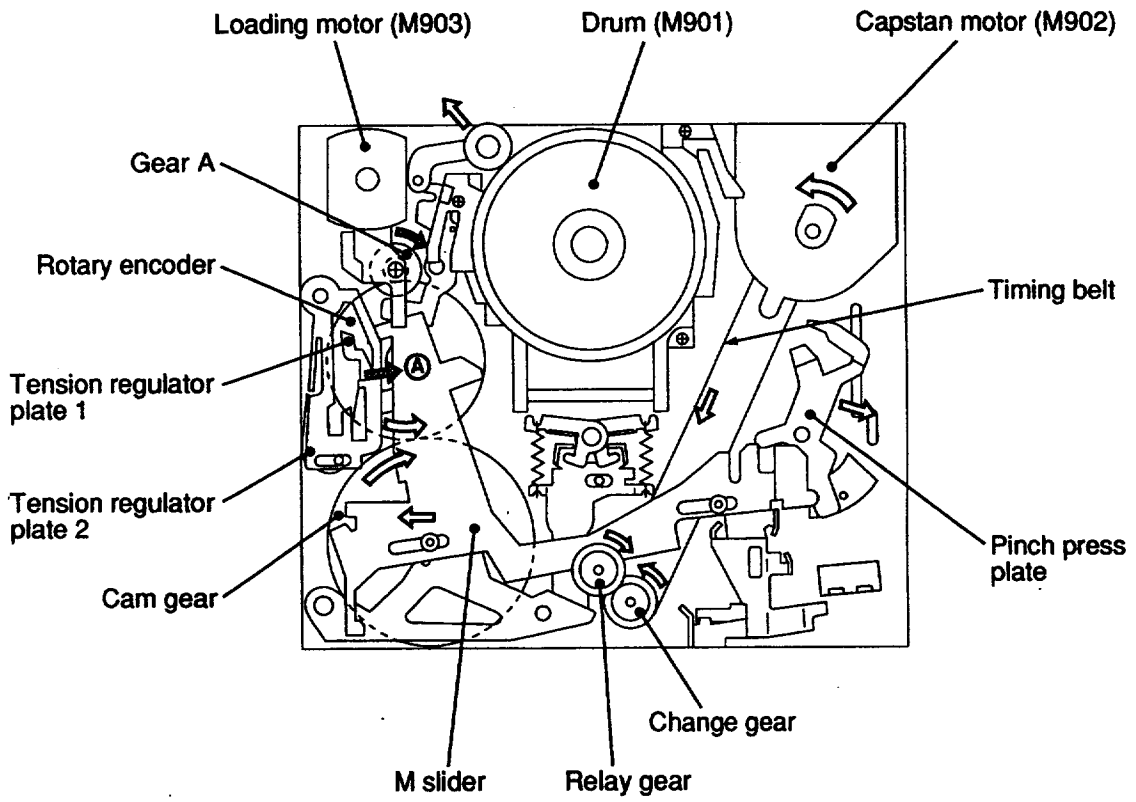


Fig. 4-9 Mechanism chassis assembly

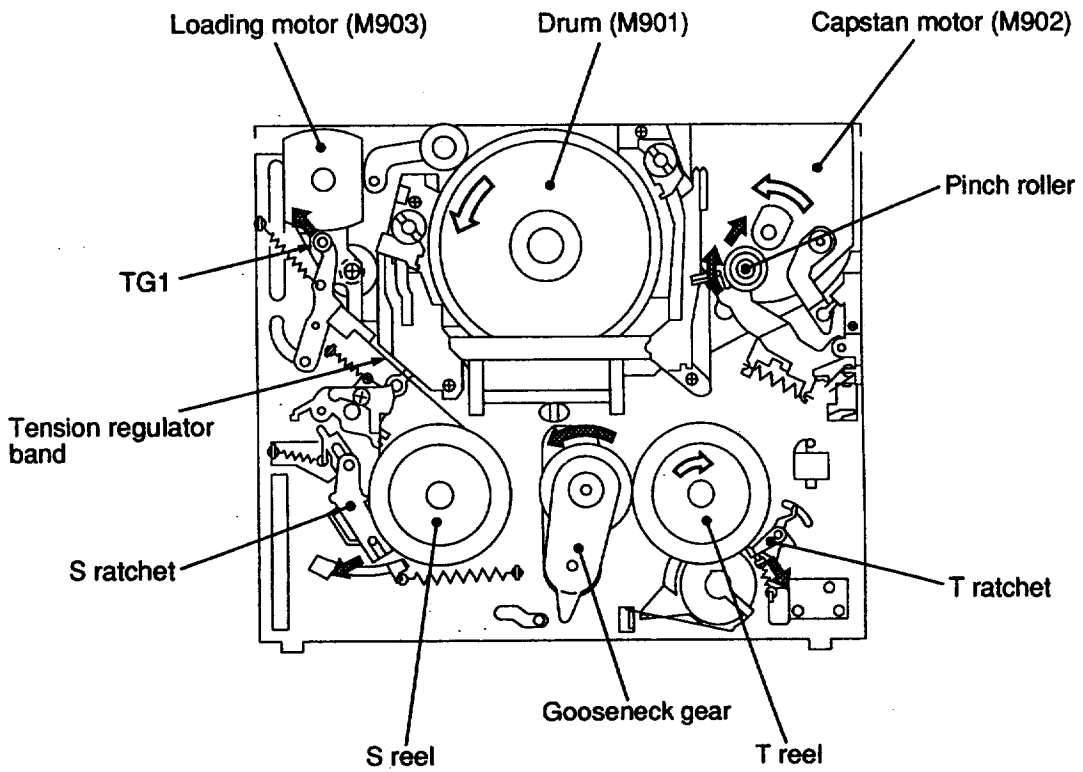
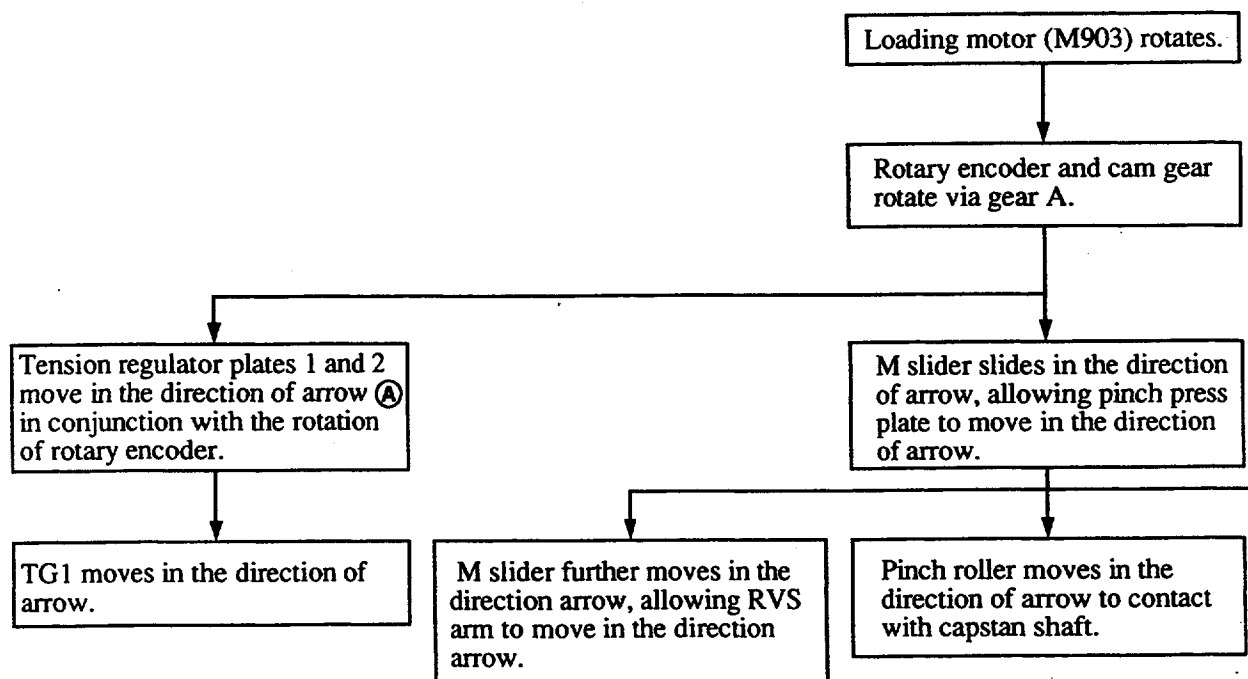


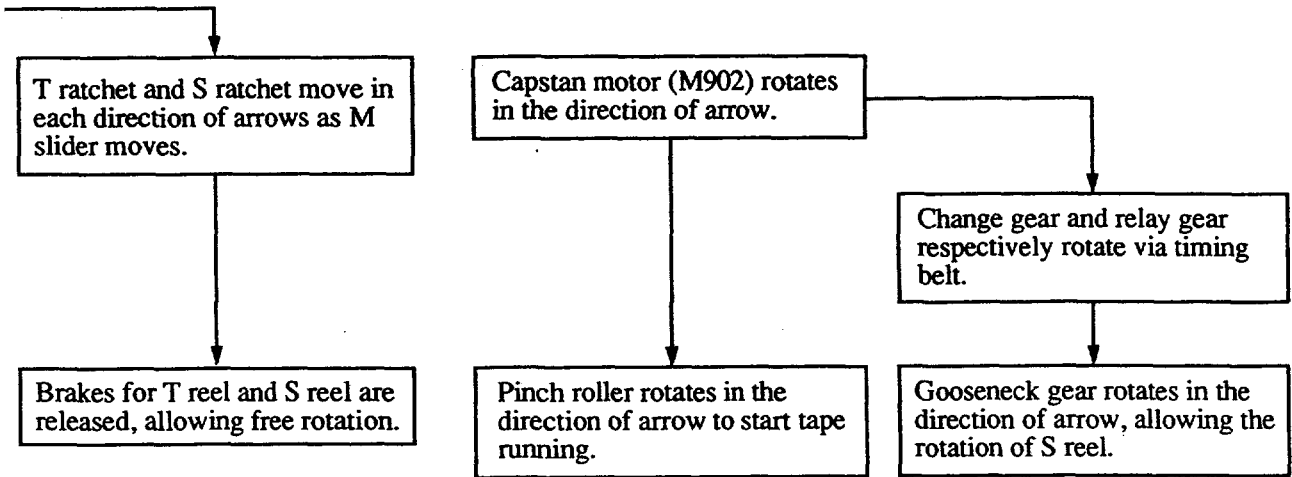
Fig. 4-10 Mechanism chassis and LS chassis assembly

4-5. STOP \Longrightarrow REWIND



* With this operation, tension regulator band is loosened so that the regulation of S reel rotation becomes less severe.

Drum (M901) rotates.



* This operation winds tape around S reel.

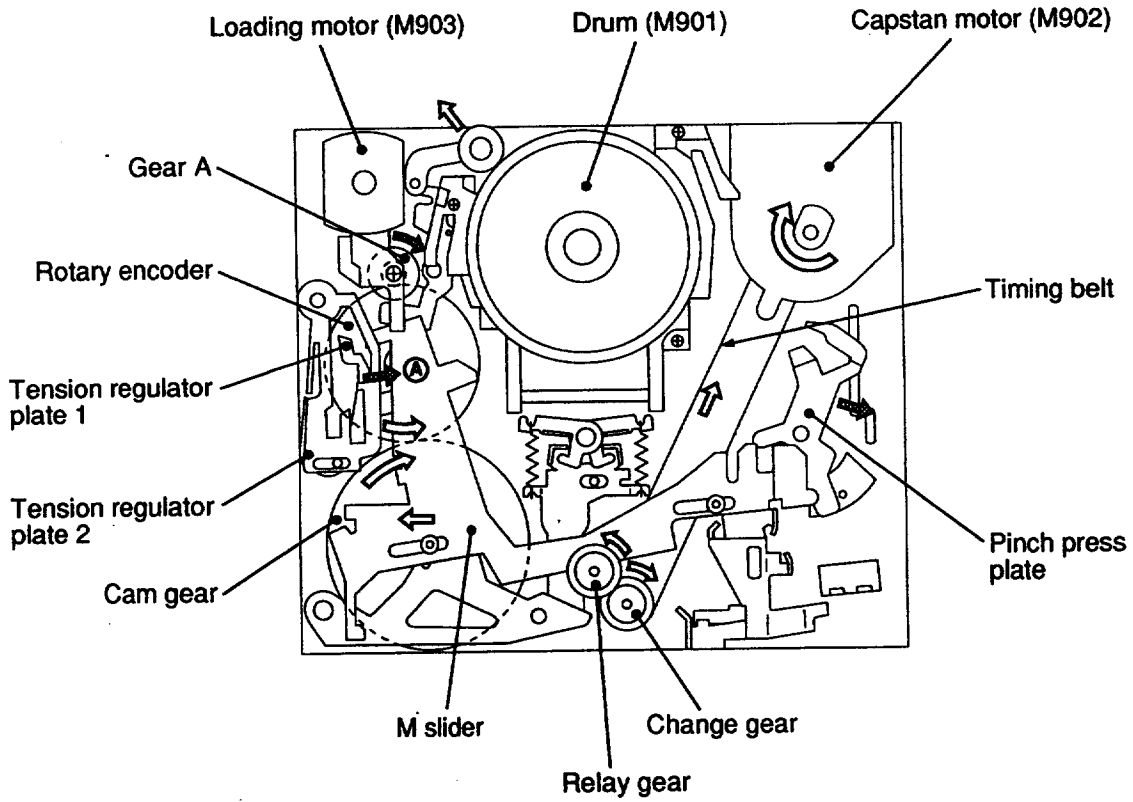


Fig. 4-11 Mechanism chassis assembly

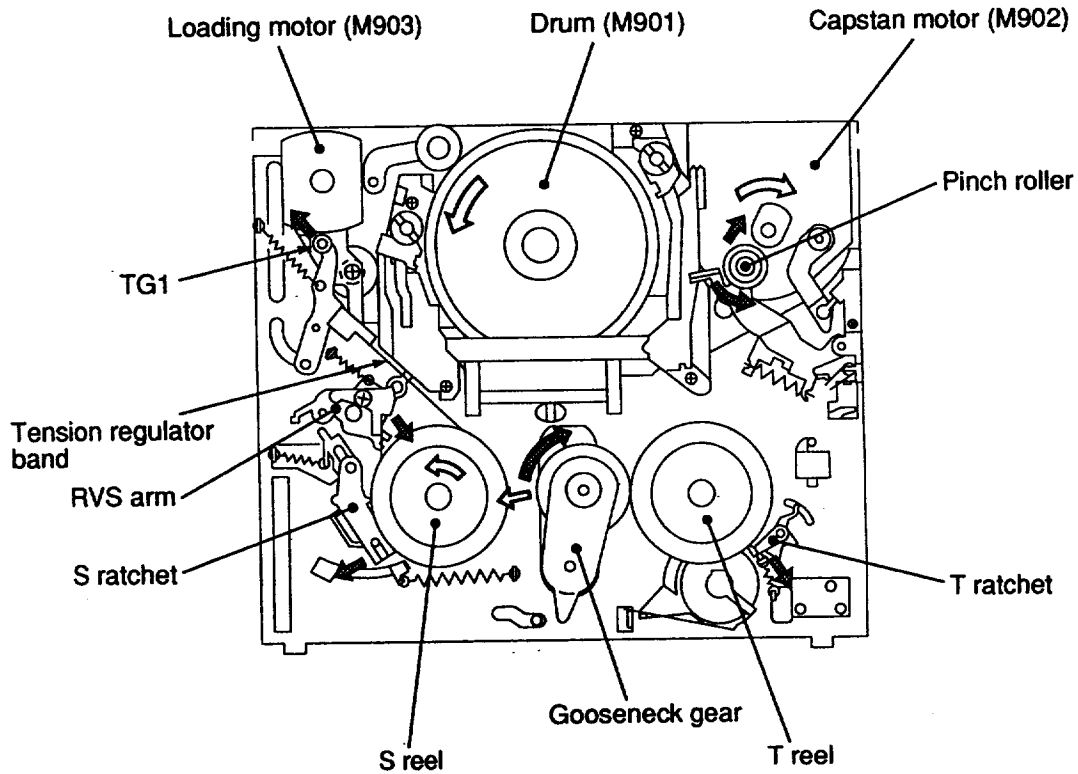
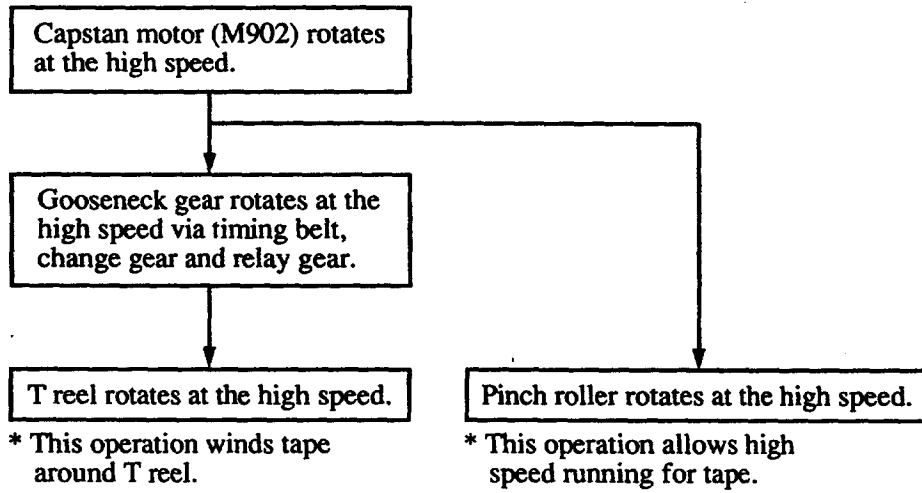


Fig. 4-12 Mechanism chassis and LS chassis assembly

4-6. PB → CUE



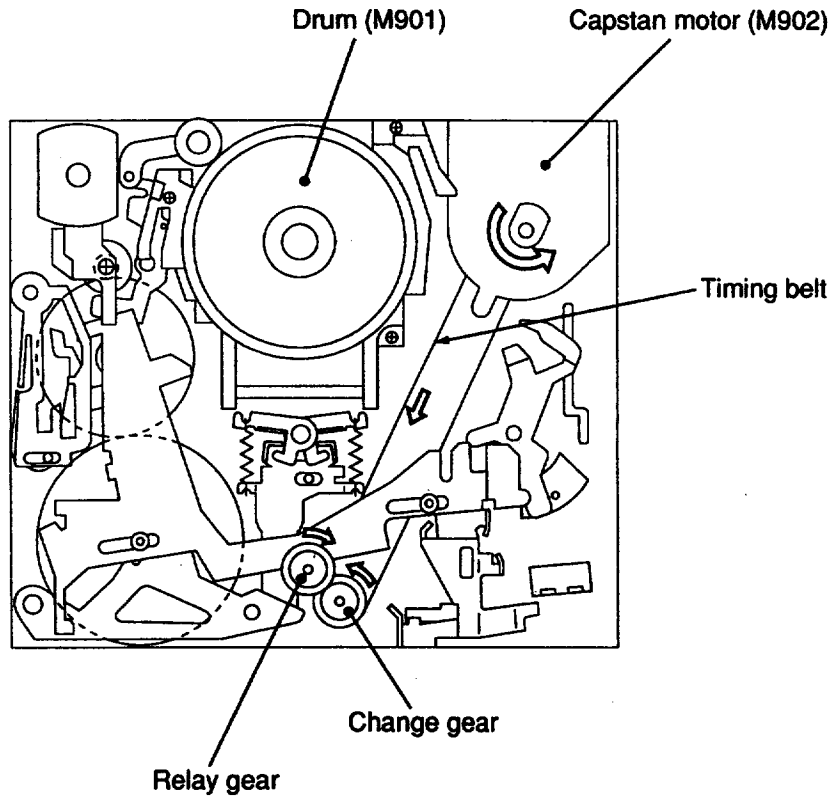


Fig. 4-13 Mechanism chassis assembly

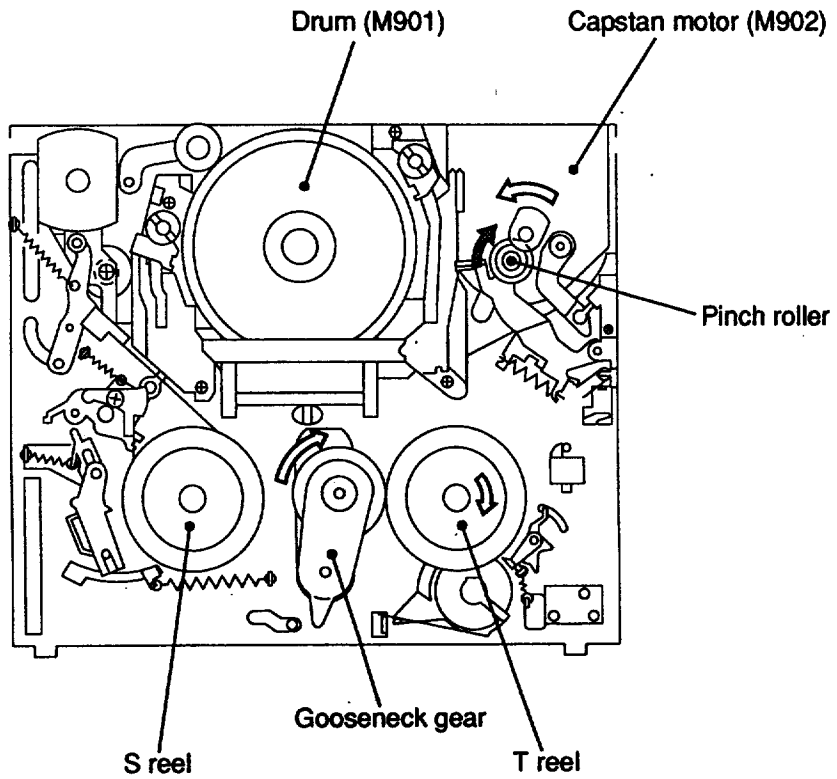
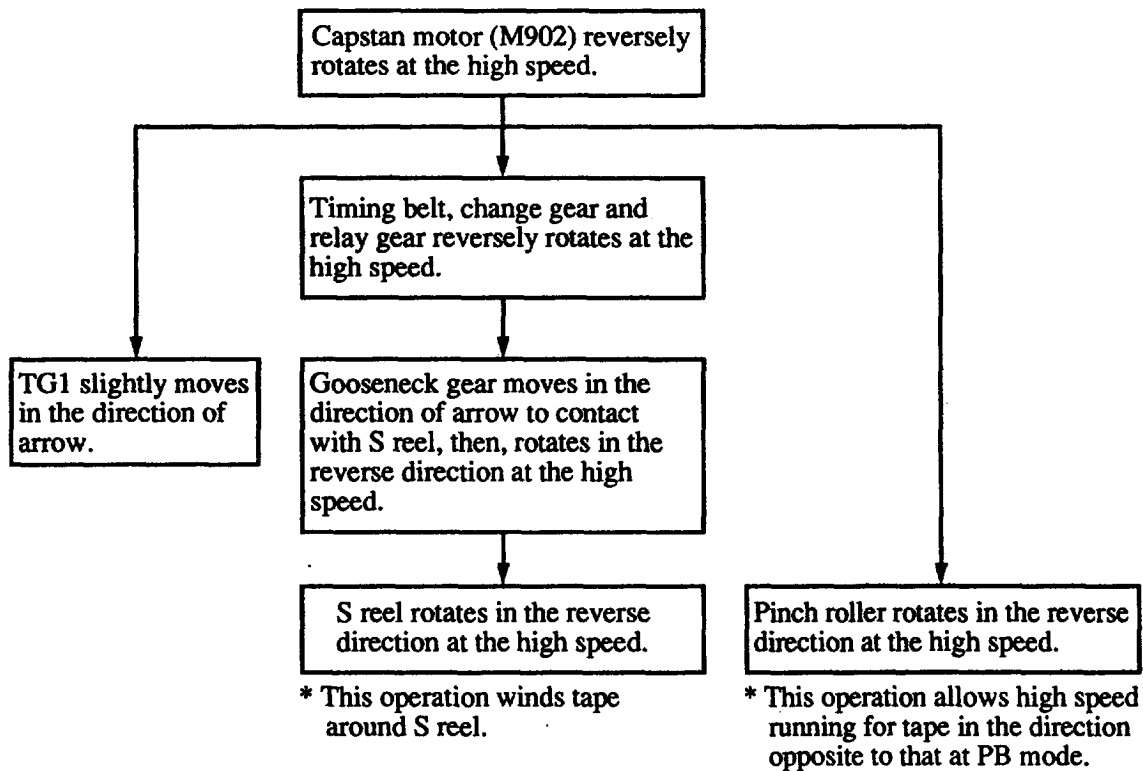


Fig. 4-14 Mechanism chassis and LS chassis assembly

4-7. PB \Rightarrow REVIEW



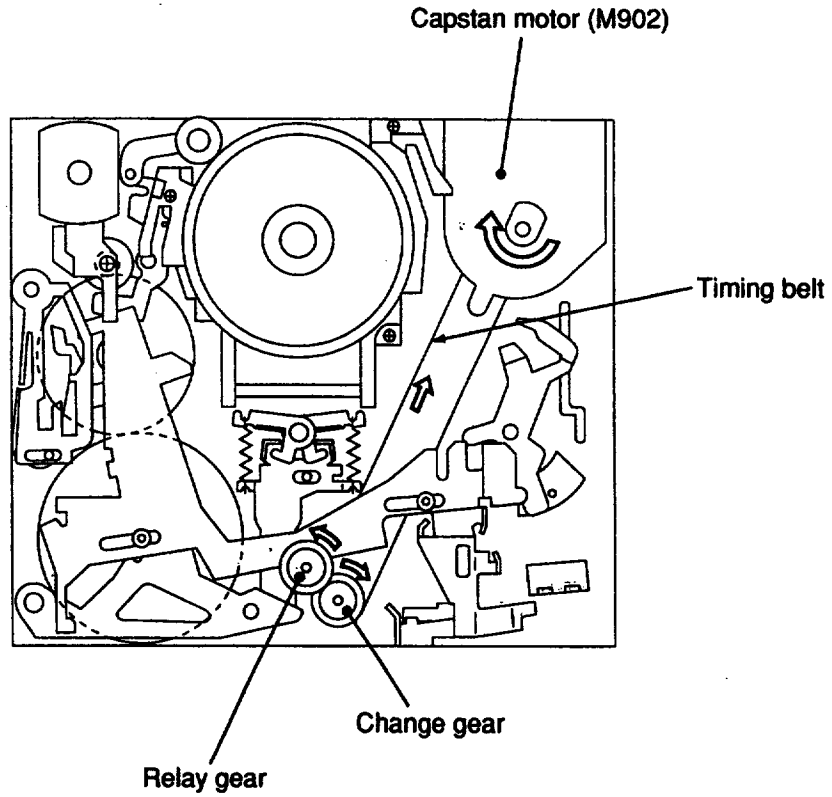


Fig. 4-15 Mechanism chassis assembly.

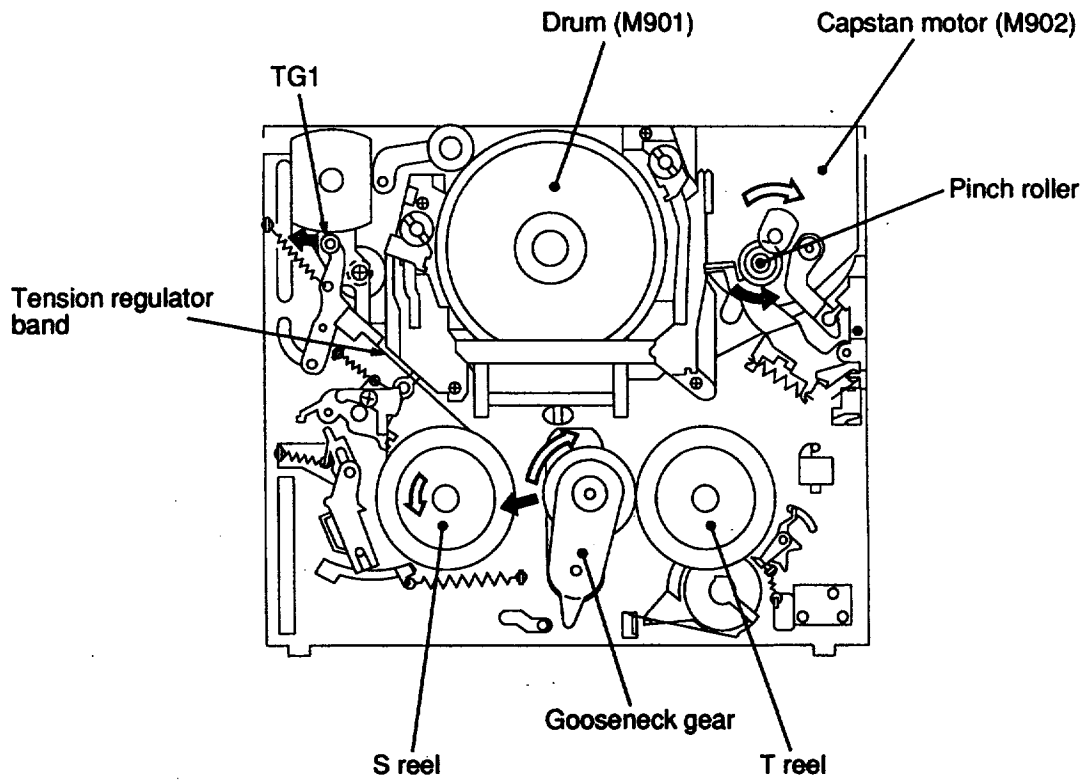
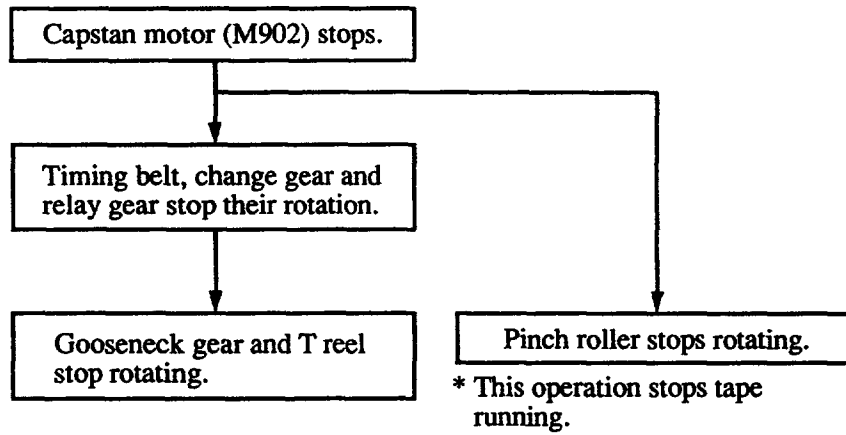


Fig. 4-16 Mechanism chassis and LS chassis assembly

4-8. PB \implies PAUSE



NOTE : Drum continues rotating without stopping the rotation.

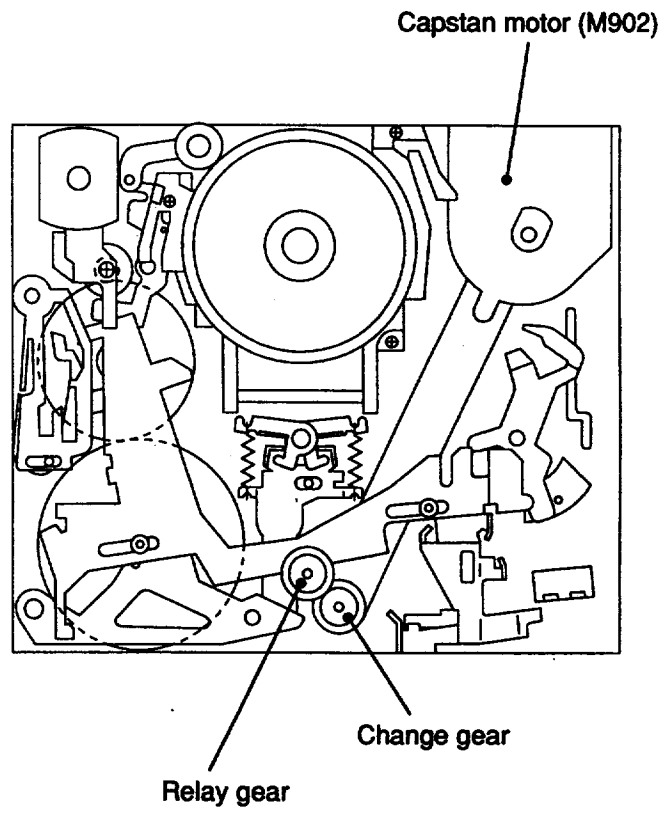


Fig. 4-17 Mechanism chassis assembly

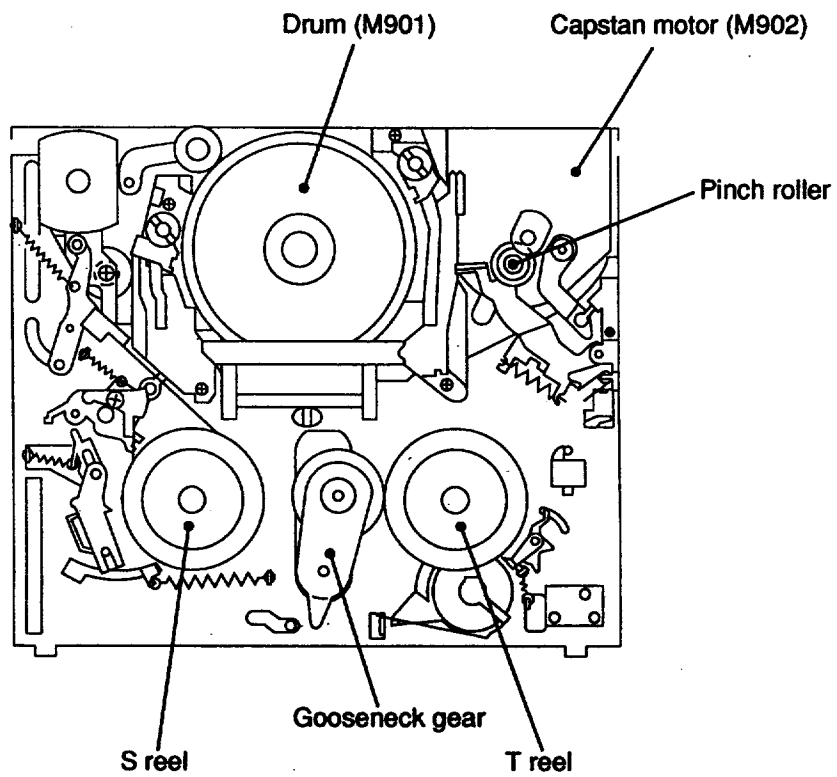
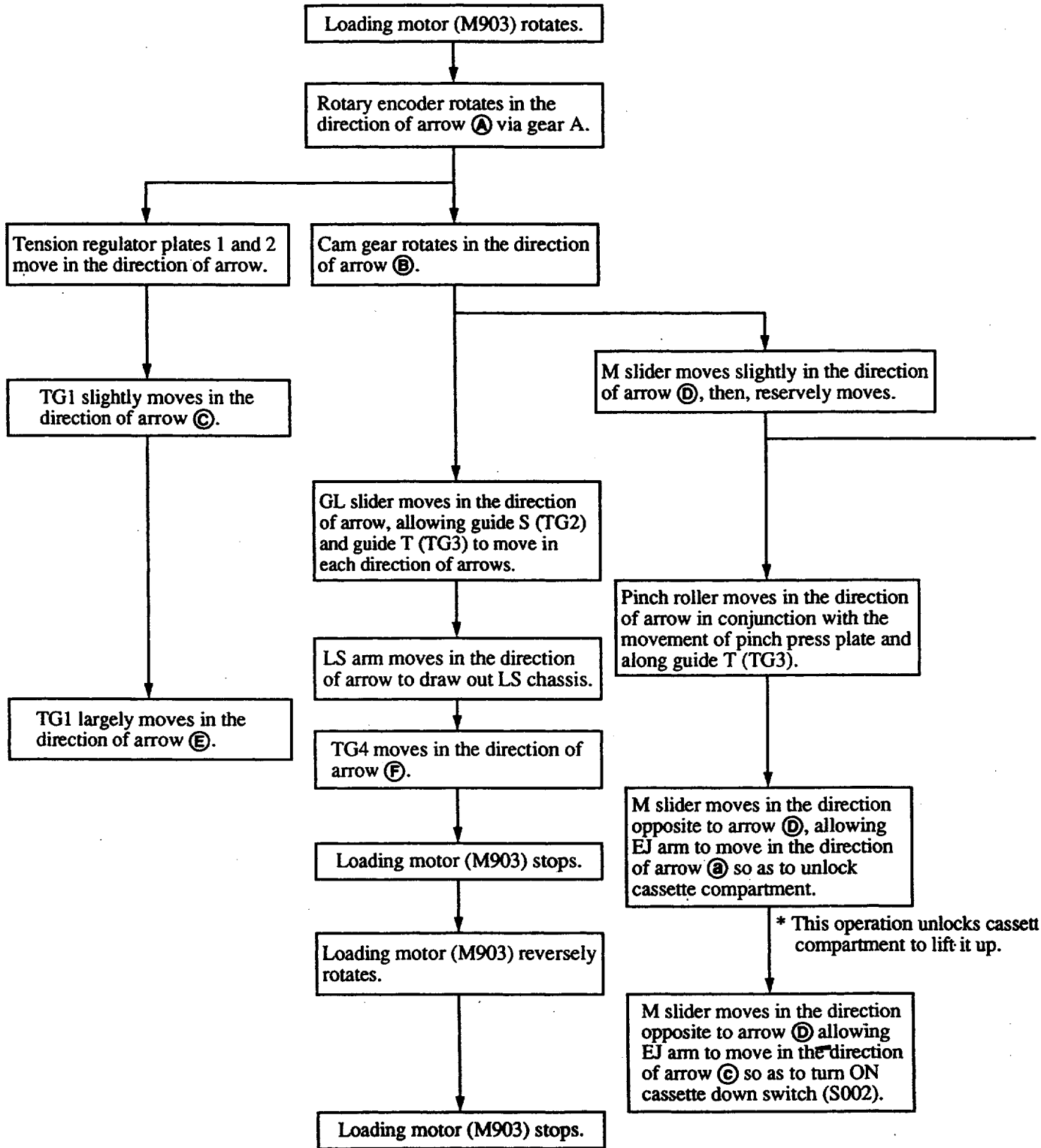


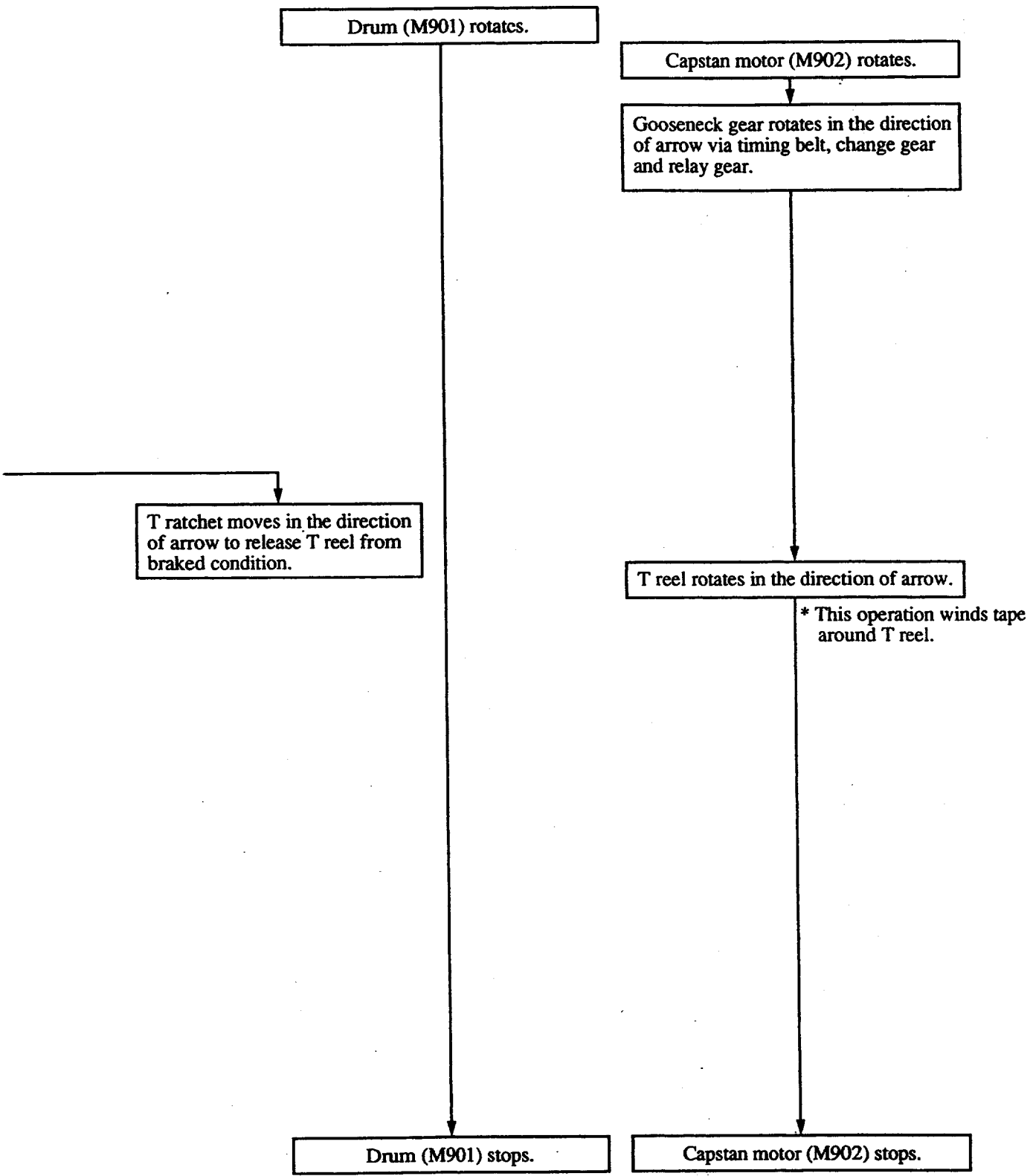
Fig. 4-18 Mechanism chassis and LS chassis assembly

Memo

Dotted lines for writing content.

4-9. STOP \longrightarrow EJECT





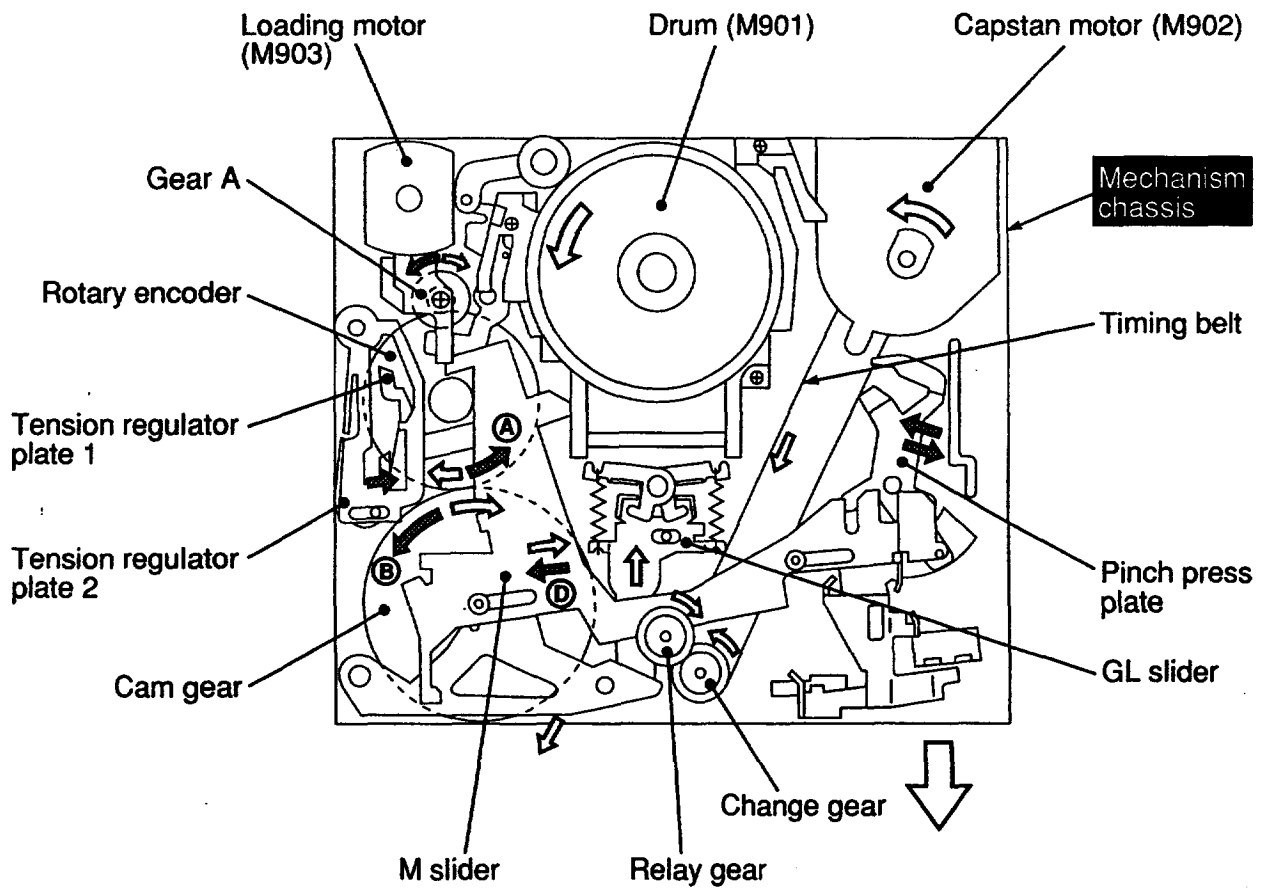


Fig. 4-19 Mechanism chassis assembly

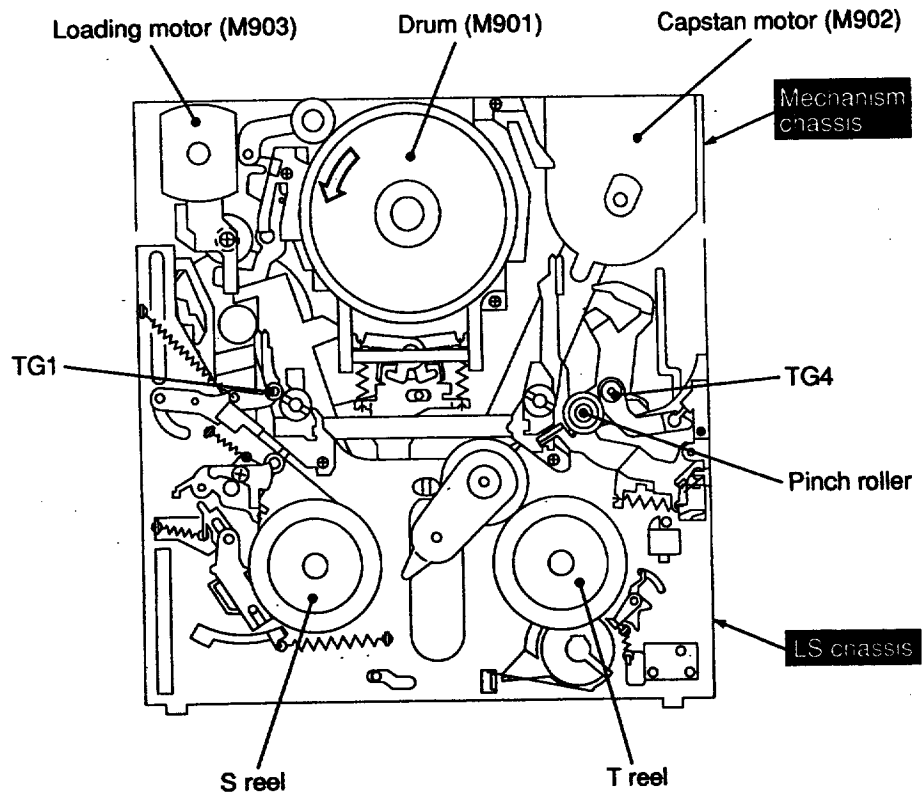
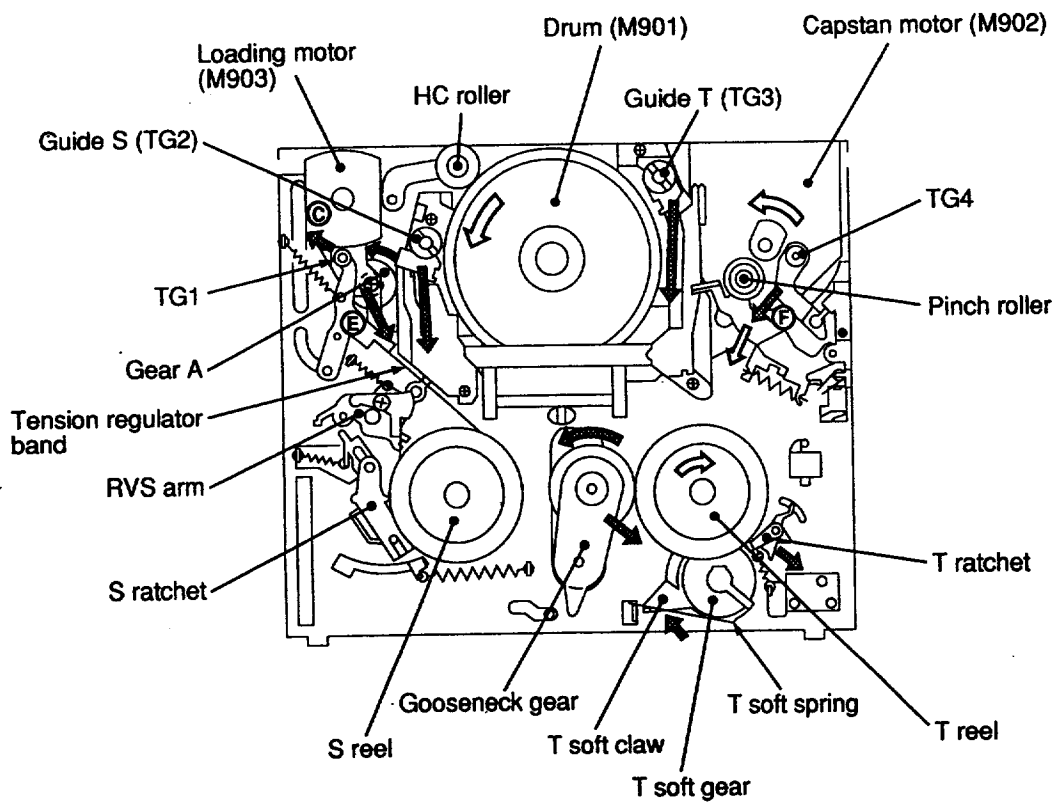


Fig. 4-20 Mechanism chassis and LS chassis assembly

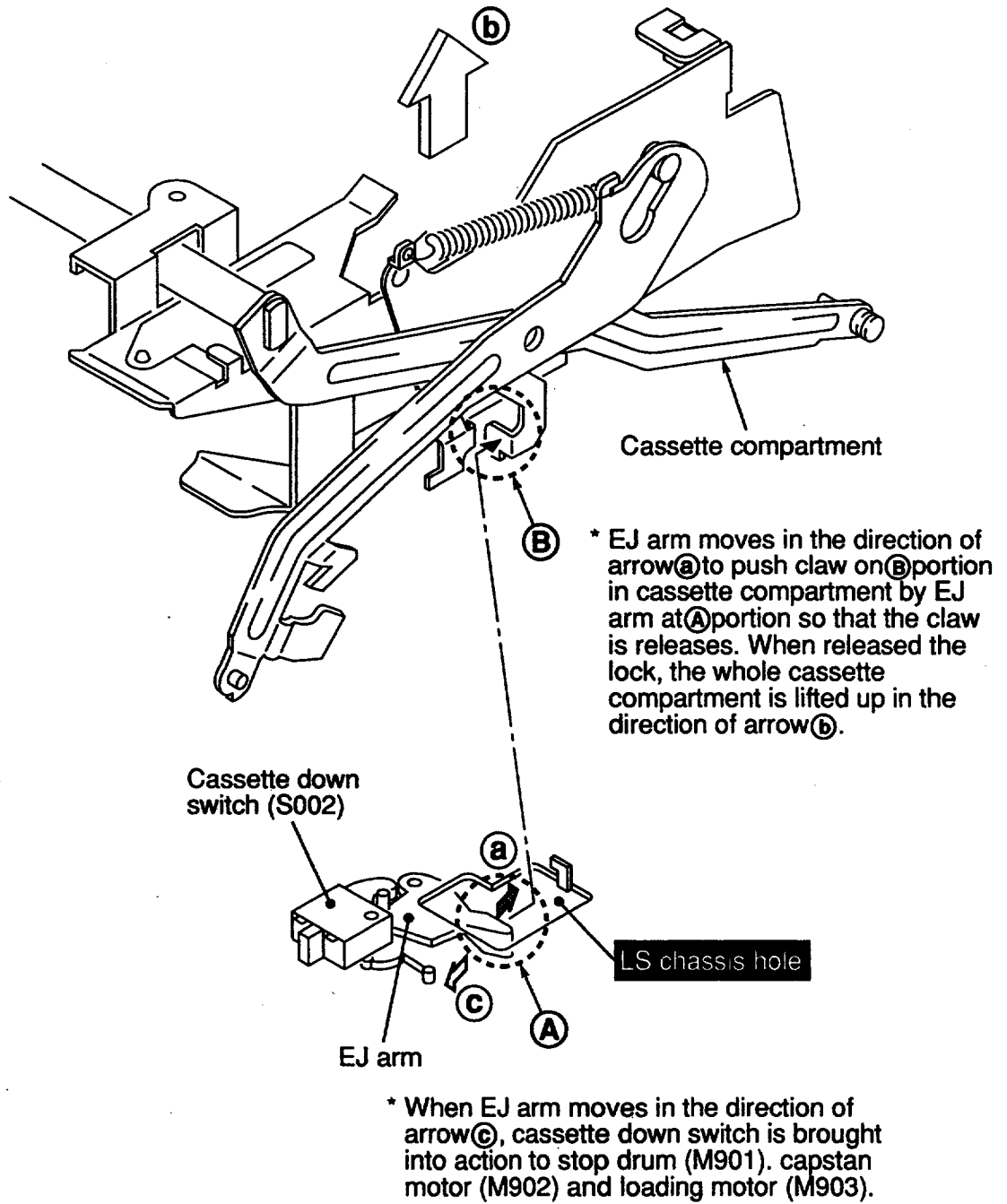


Fig. 4-21 Cassette compartment UP

SONY®

9-973-801-31

Sony Corporation
Consumer A&V Products Company
Personal Products Div.

- 50 -

English
95K0593-1
Printed in U.S.A.
© 1995. 11
Published by Personal A&V Products Div.
Quality Engineering Dept.