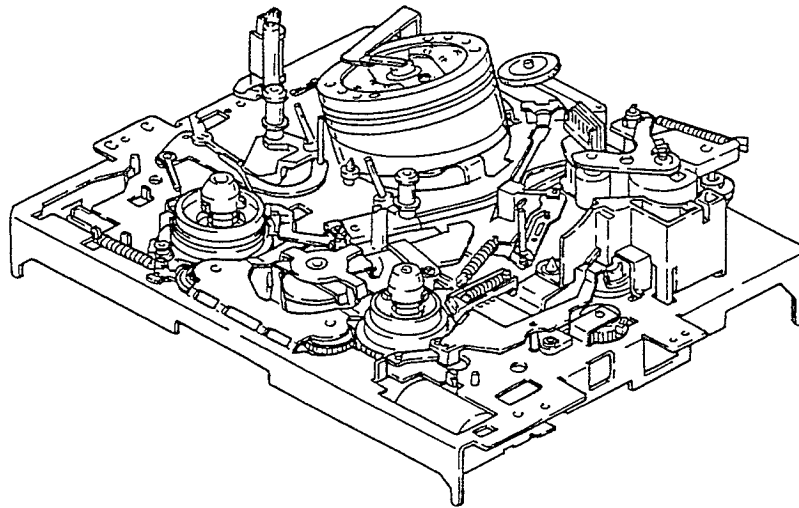
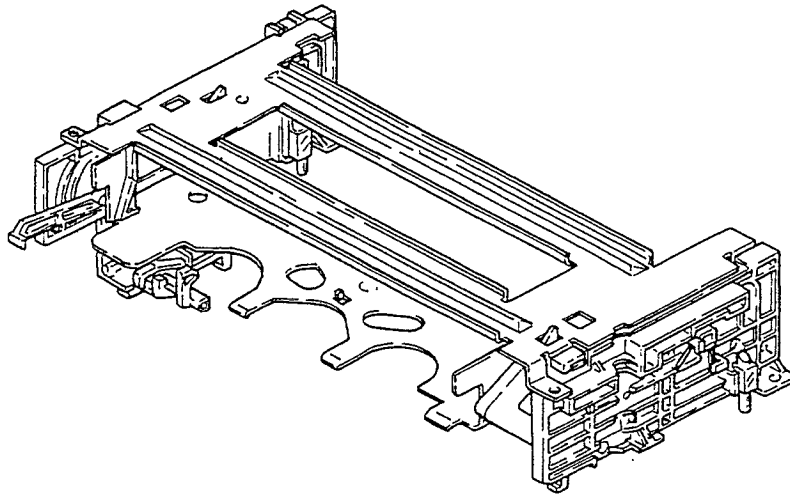


NEW TECHNICAL THEORY FOR SERVICING

H MECHANISM OPERATION MANUAL



SONY®

Contents

1. Main parts layout diagram	3
2. Tape path	4
3. Cassette IN → Loading → Stop	5
4. Stop → Playback	11
5. Stop → Power OFF	13
6. Playback → CUE	15
7. Playback → REV	17
8. Stop → Fast forward (FF)	19
9. Stop → Rewind (REW)	23
10. Stop → Unloading → Eject.....	27

1. Main parts layout diagram

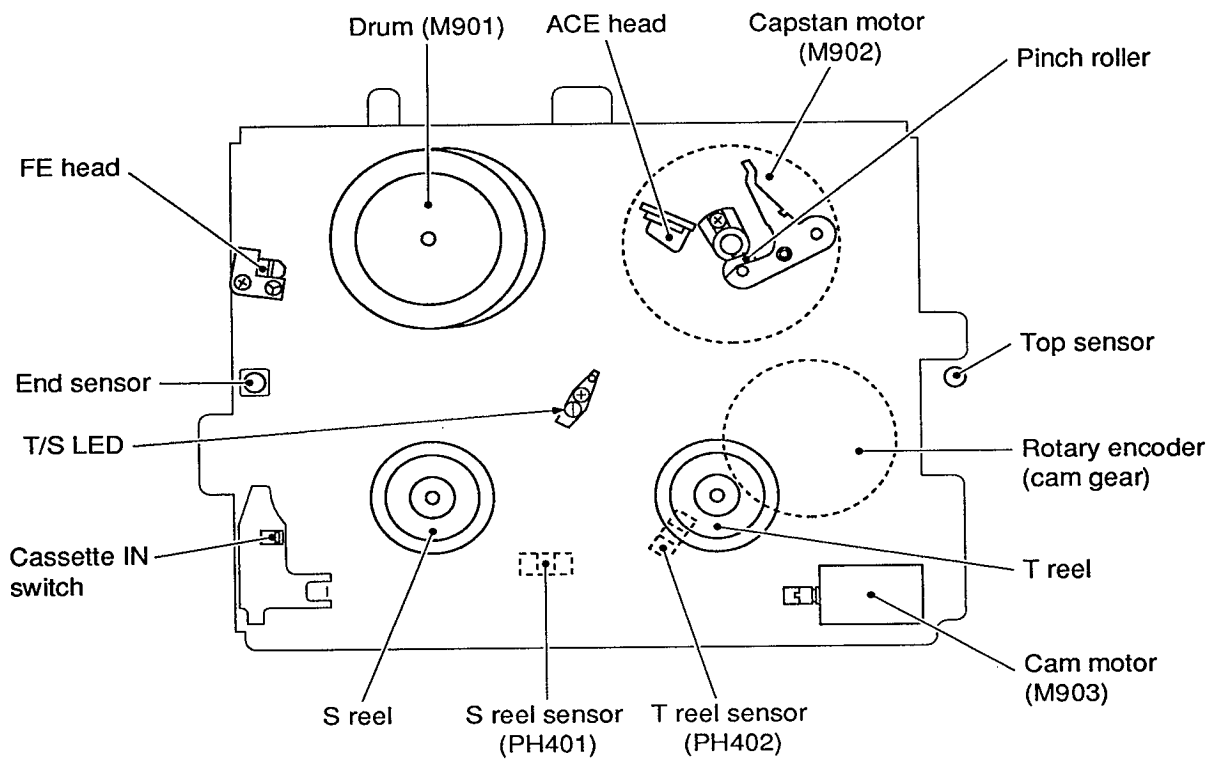


Fig. 1-1

2. Tape path

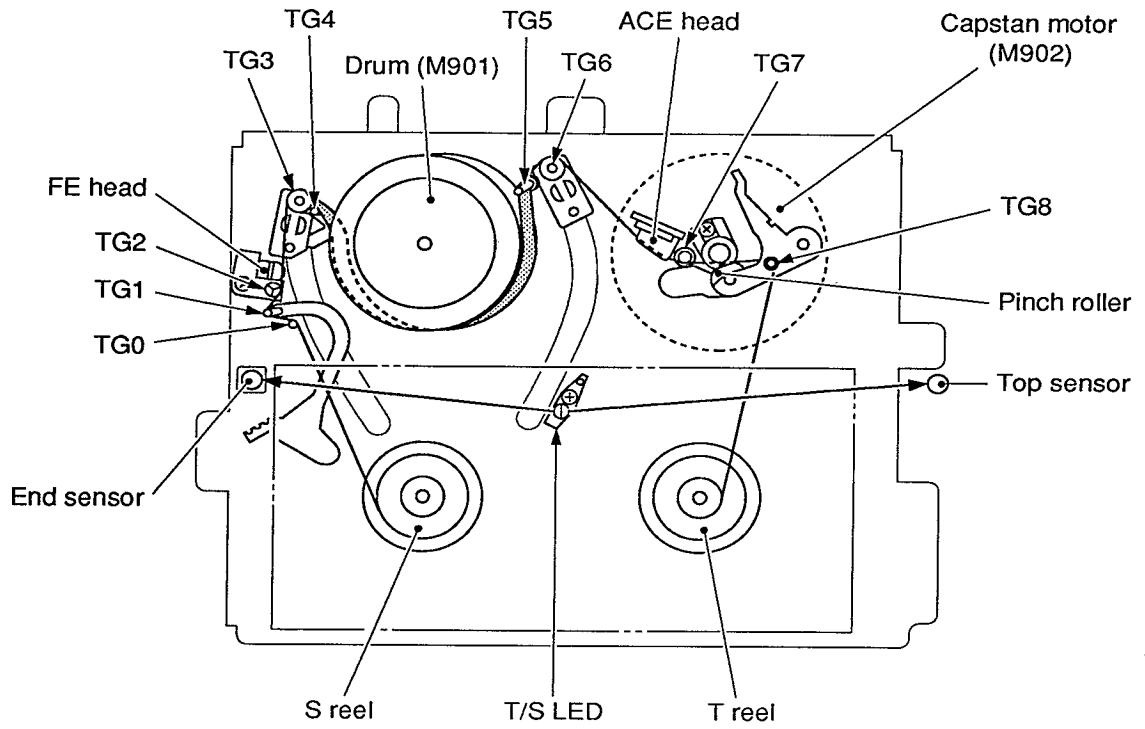


Fig. 2-1

3. Cassette IN → Loading → Stop

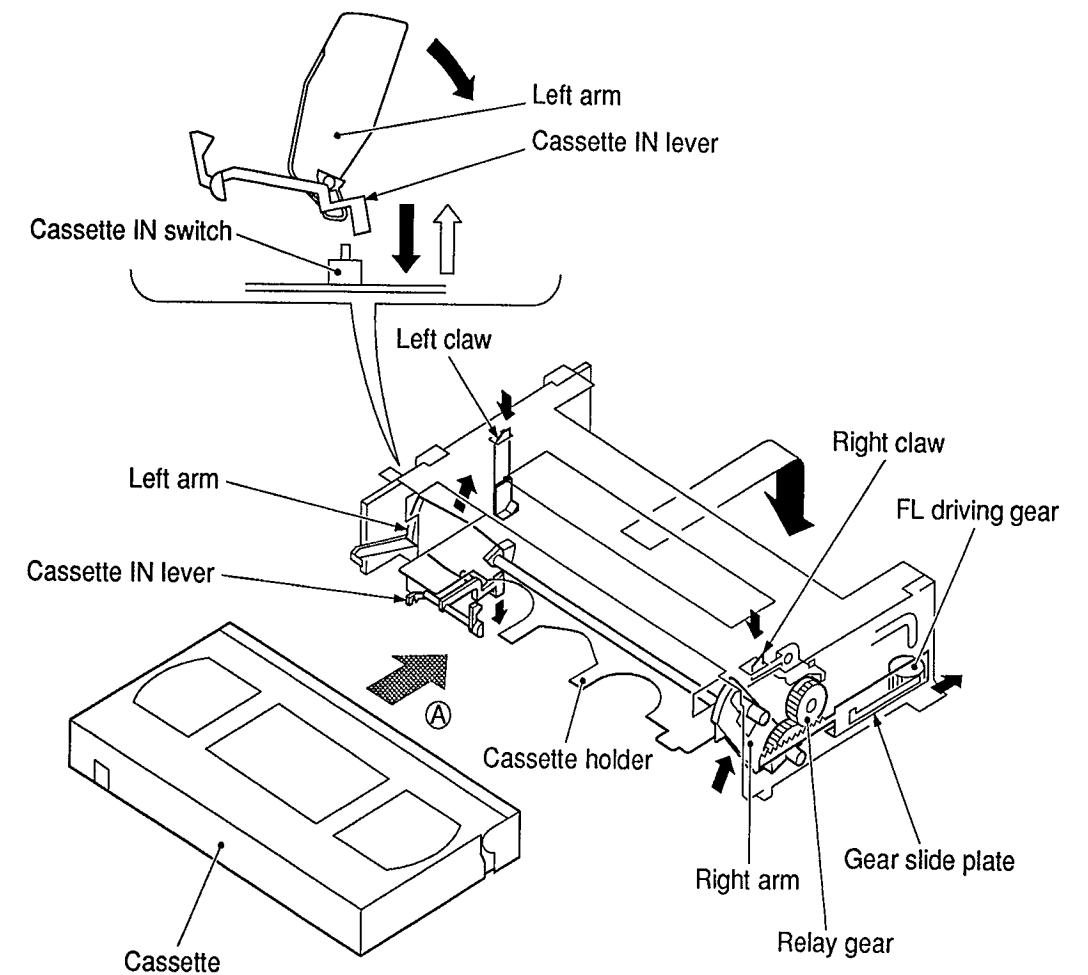
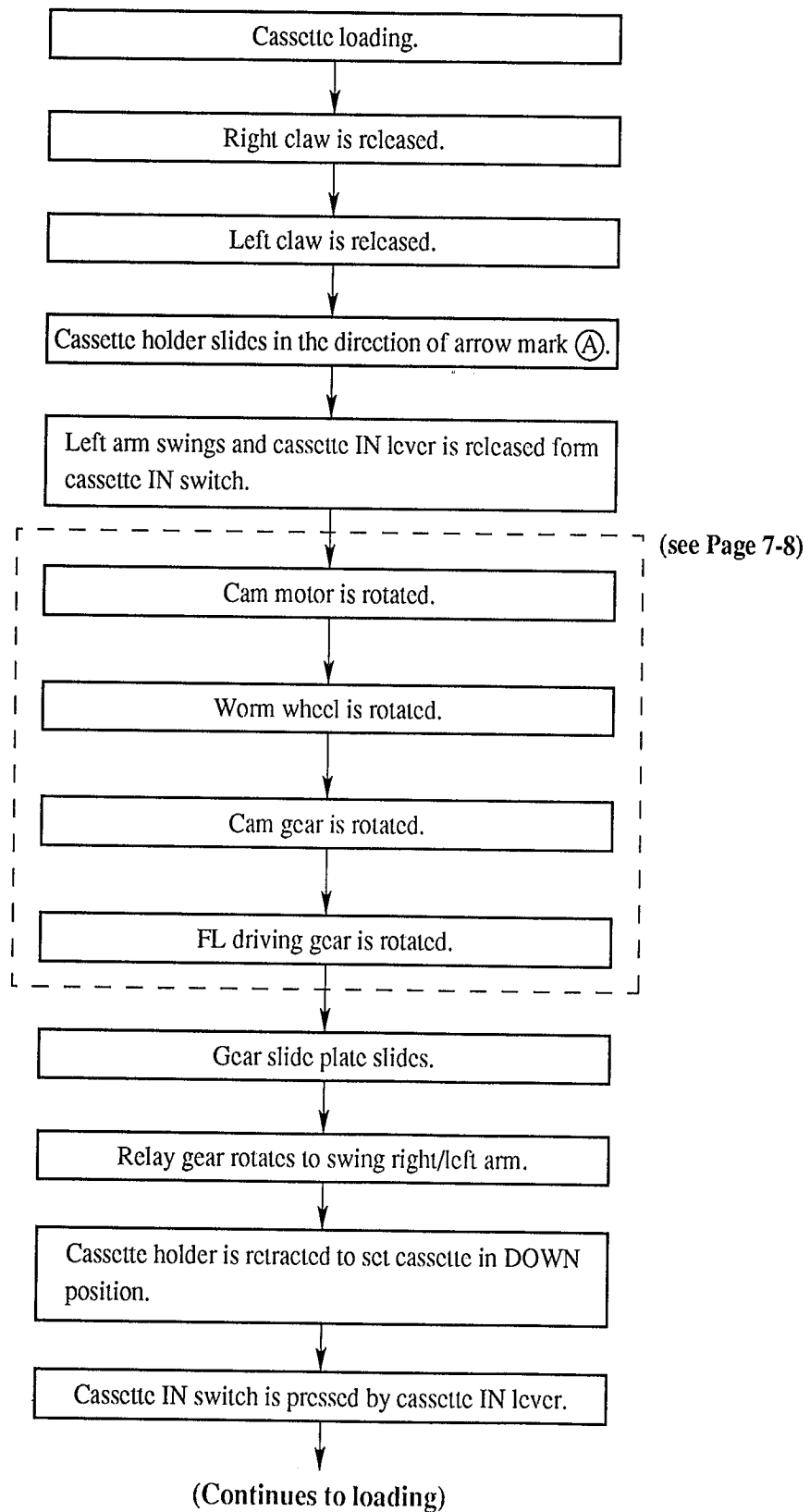
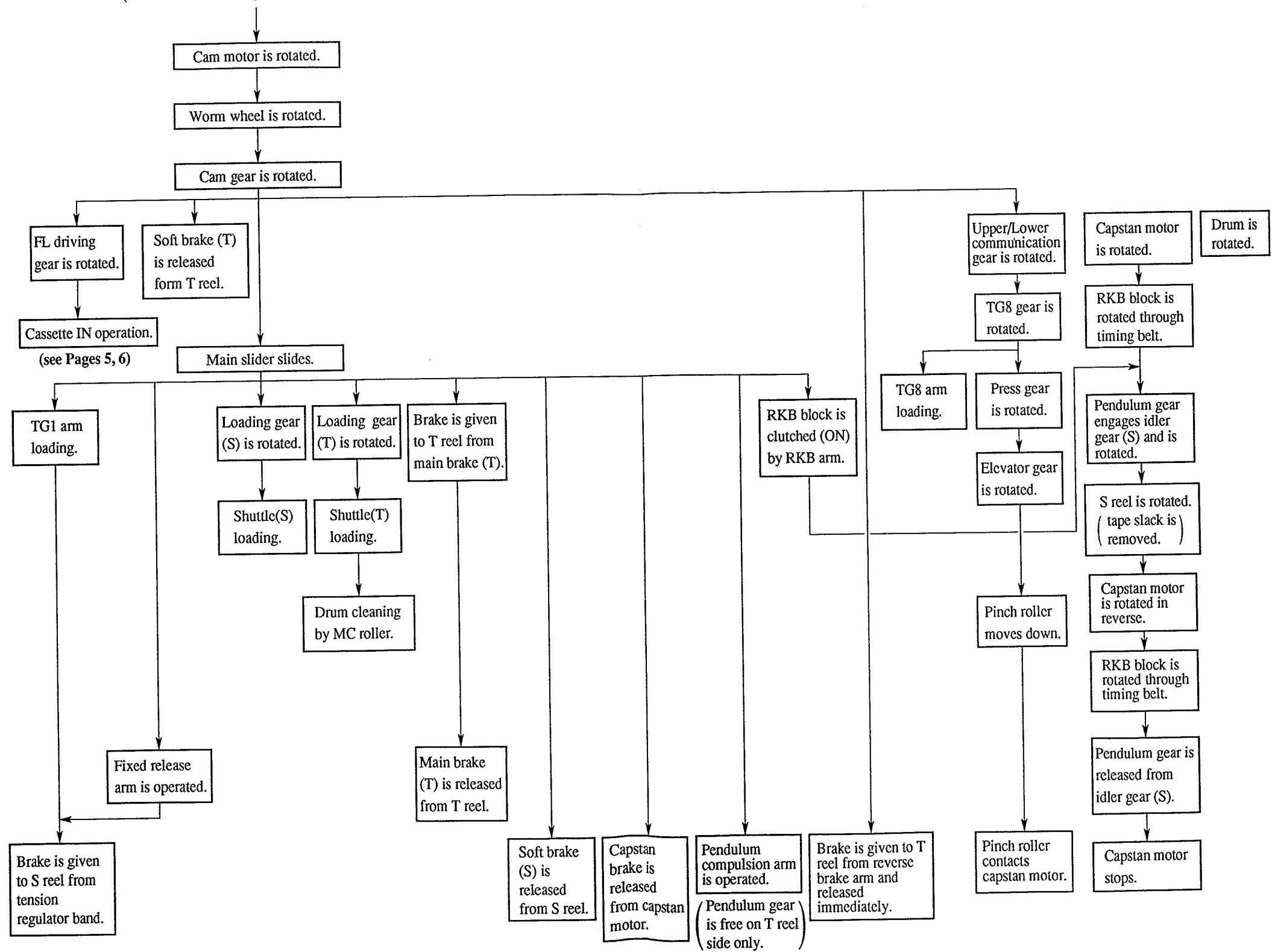


Fig.3-1

(From cassette compartment operation)



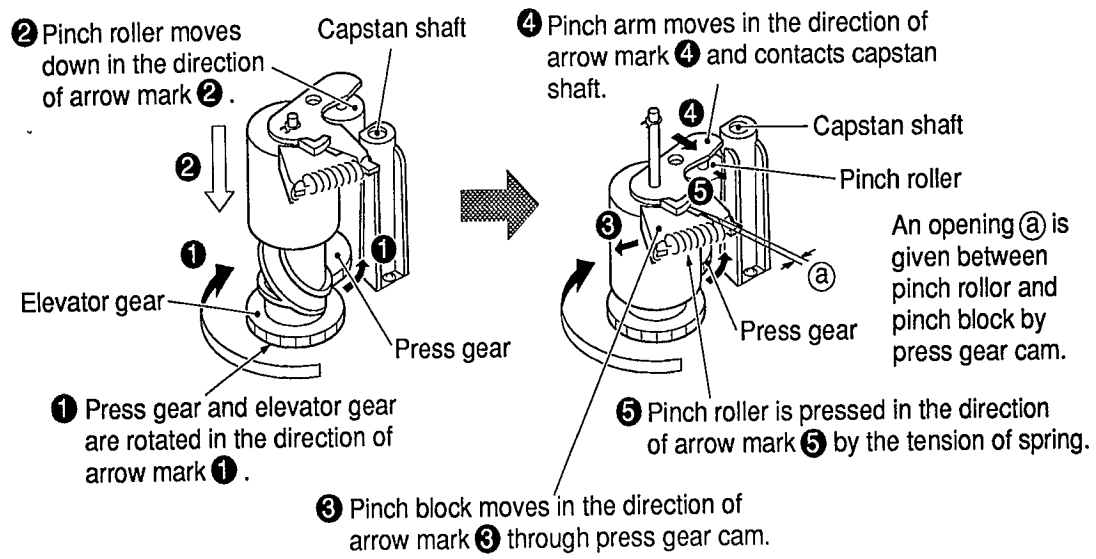


Fig.3-2

Main slider moves in the direction of arrow mark ①, and RKB arm pushed up by step (A) moves in the direction of arrow mark ②.

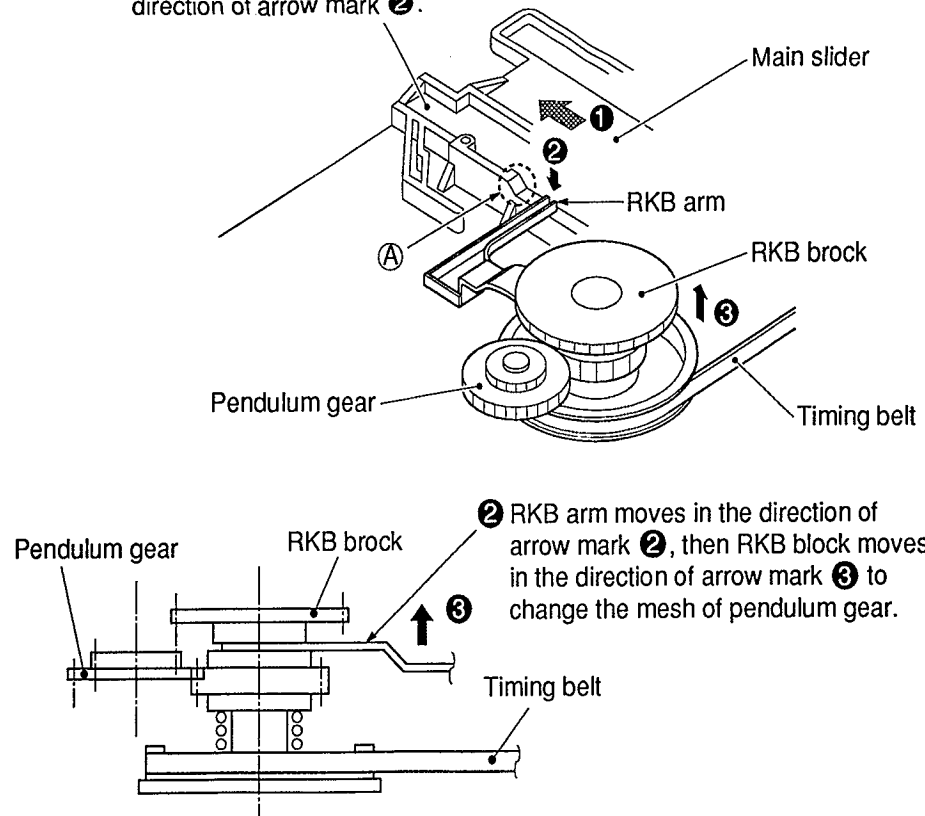


Fig.3-3

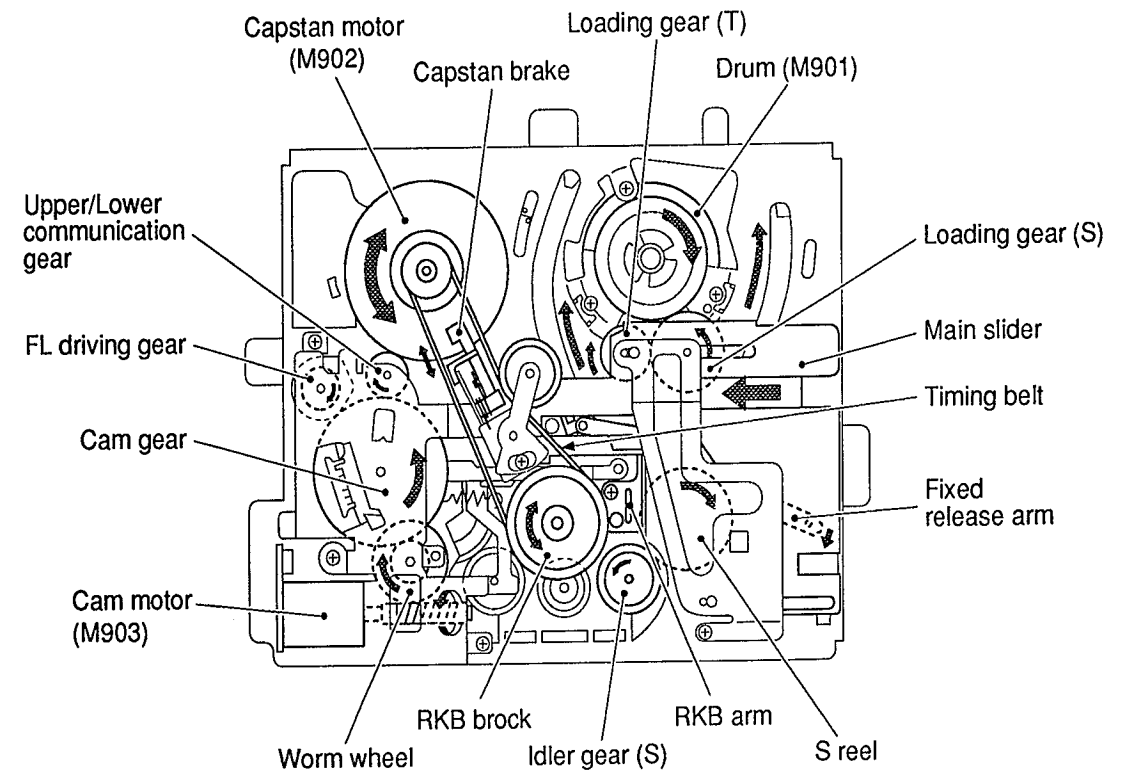
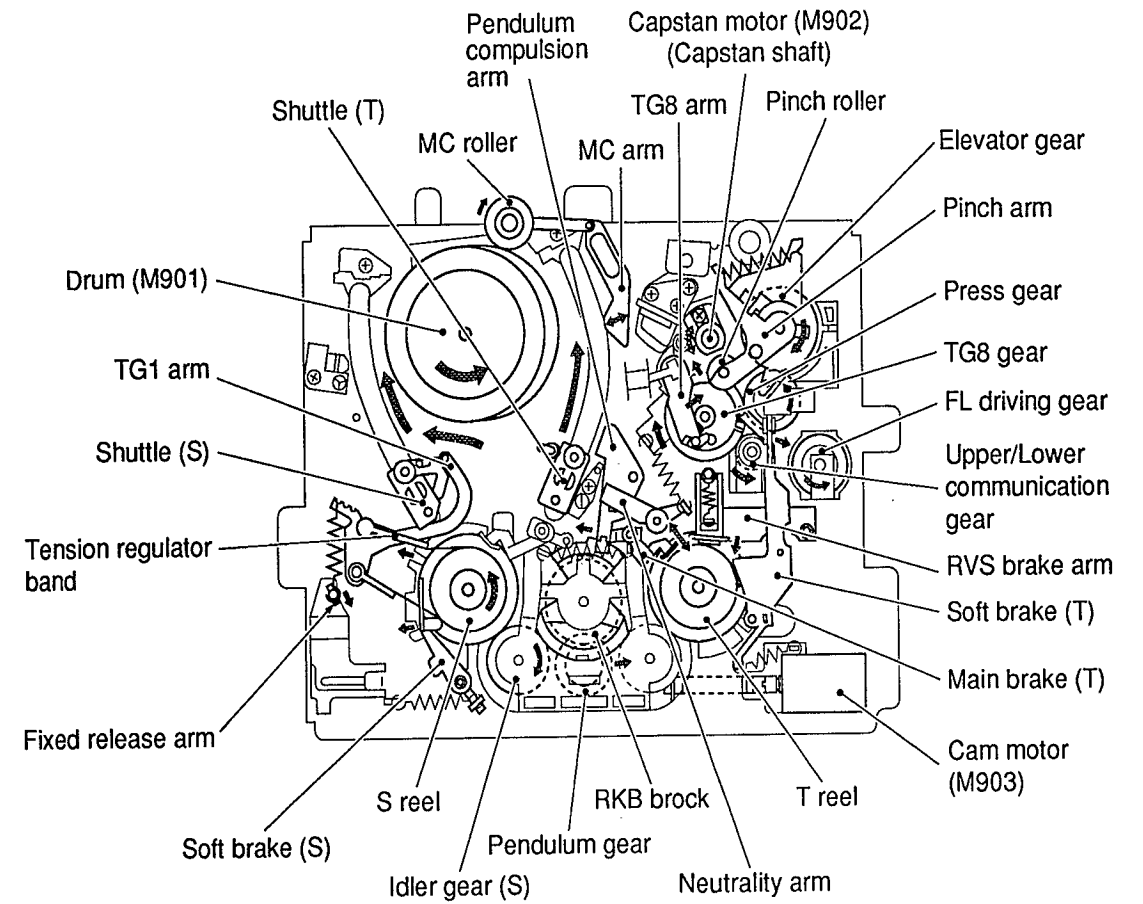


Fig.3-4

4. Stop → Playback

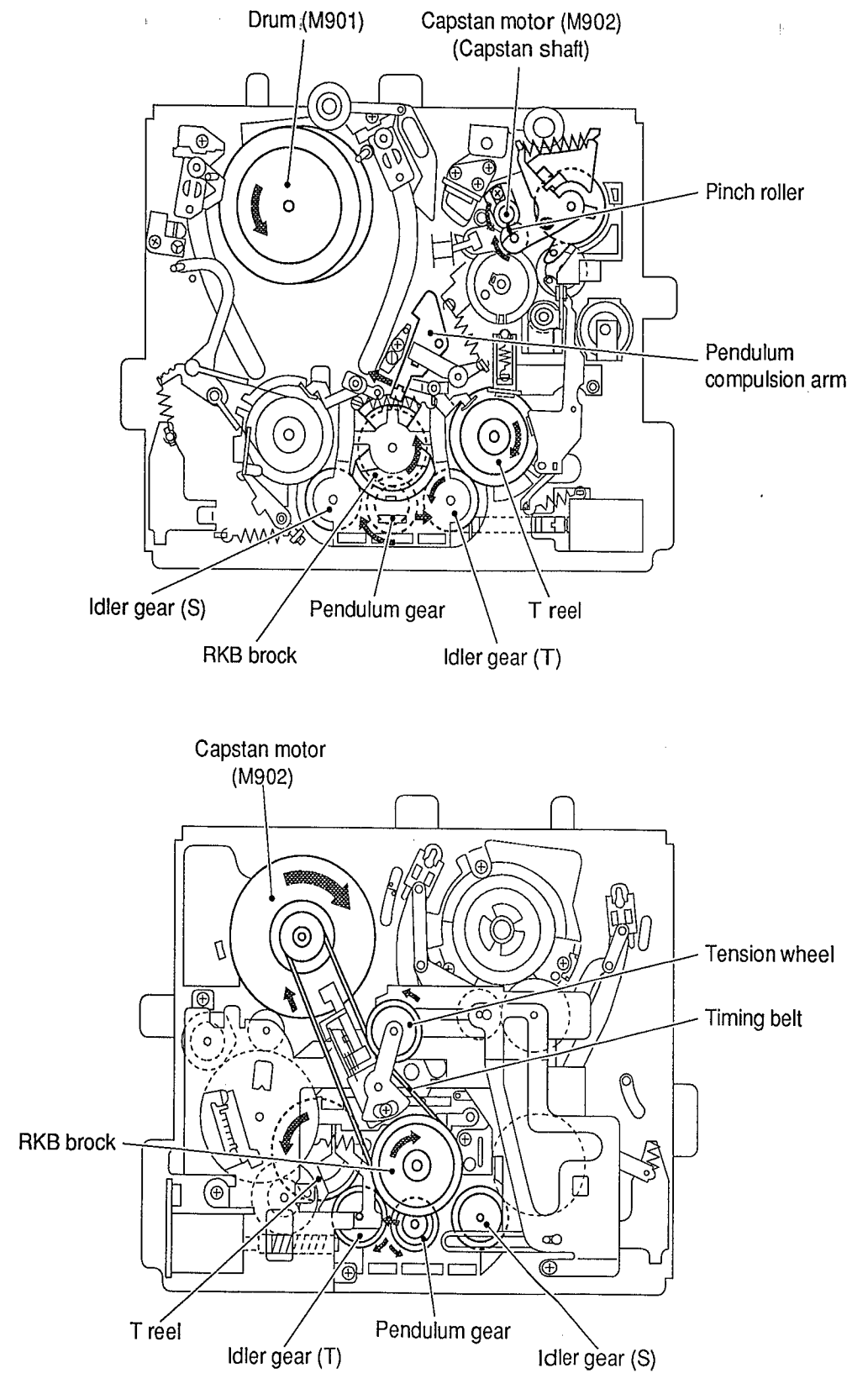
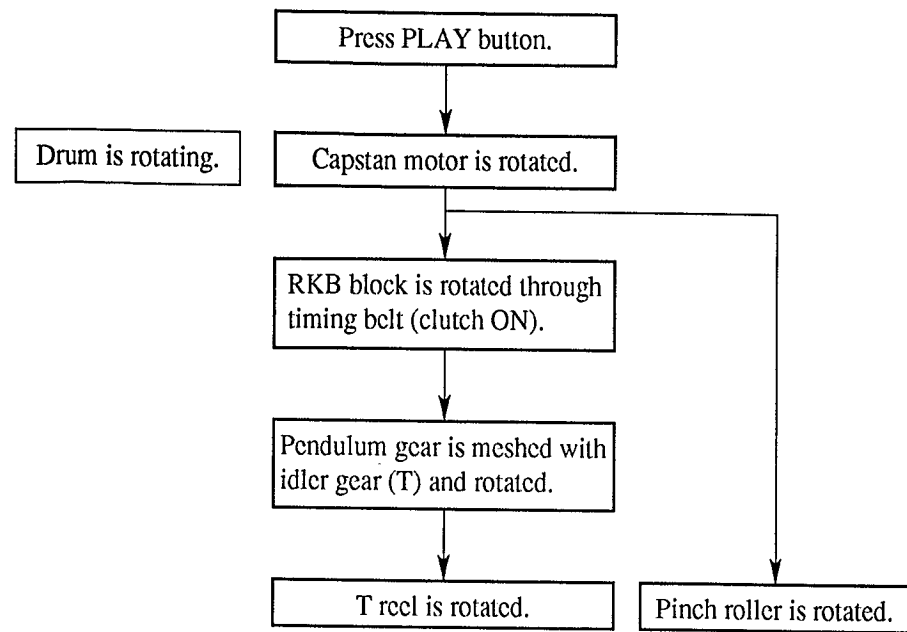


Fig. 4-1

5. Stop → Power OFF

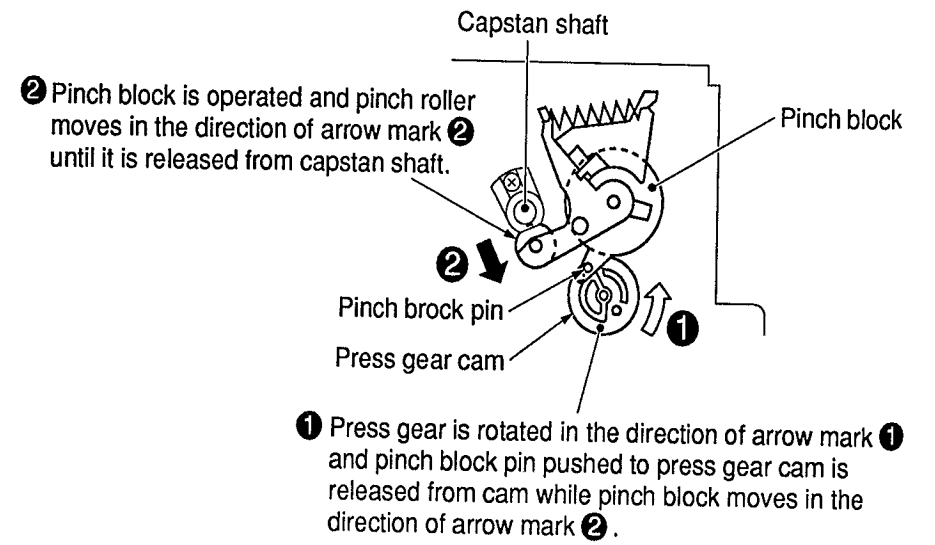
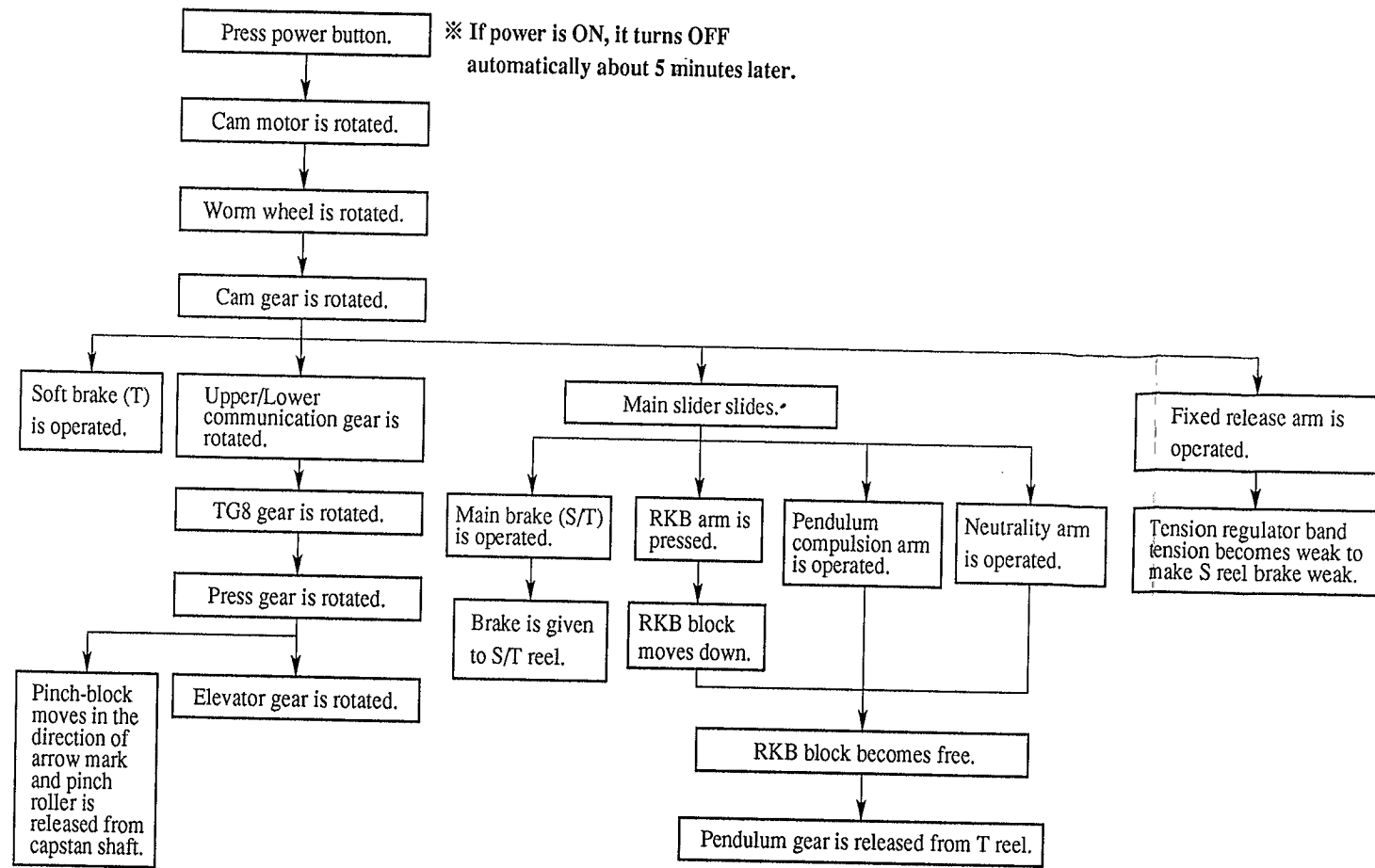


Fig. 5-2

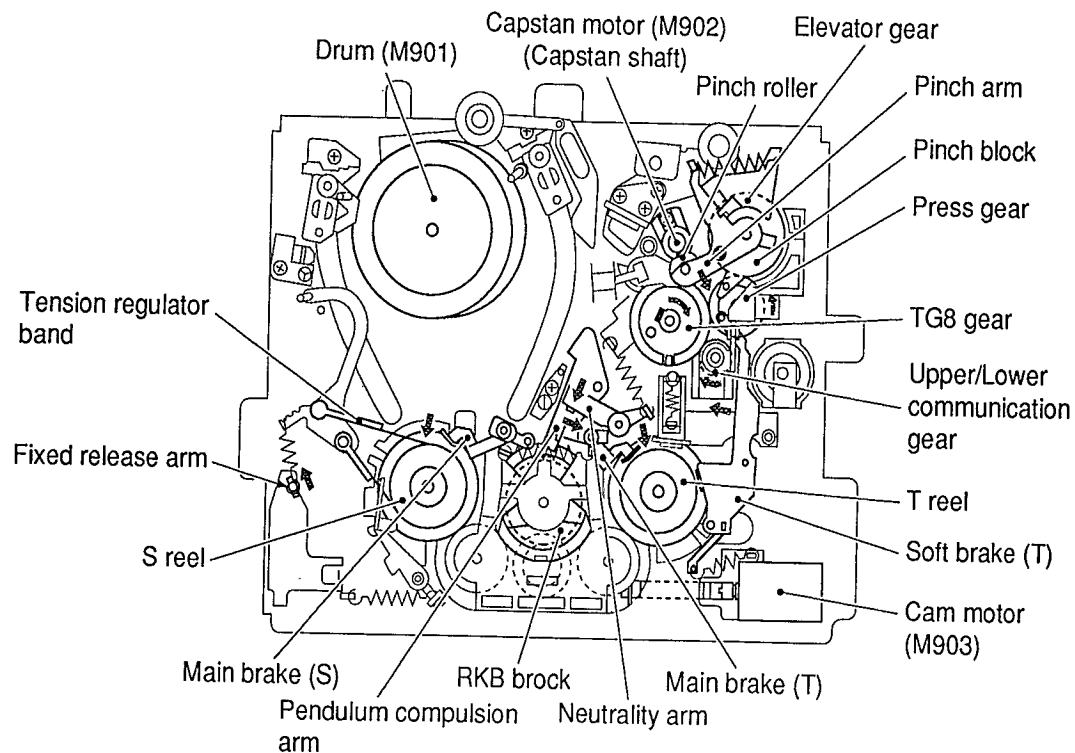
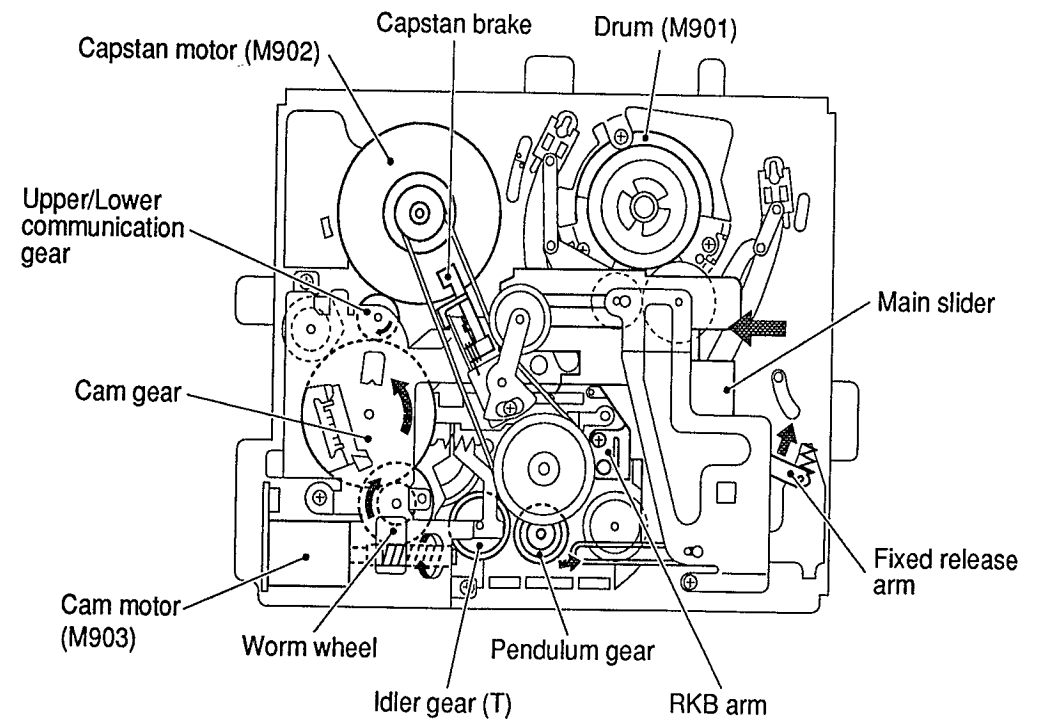
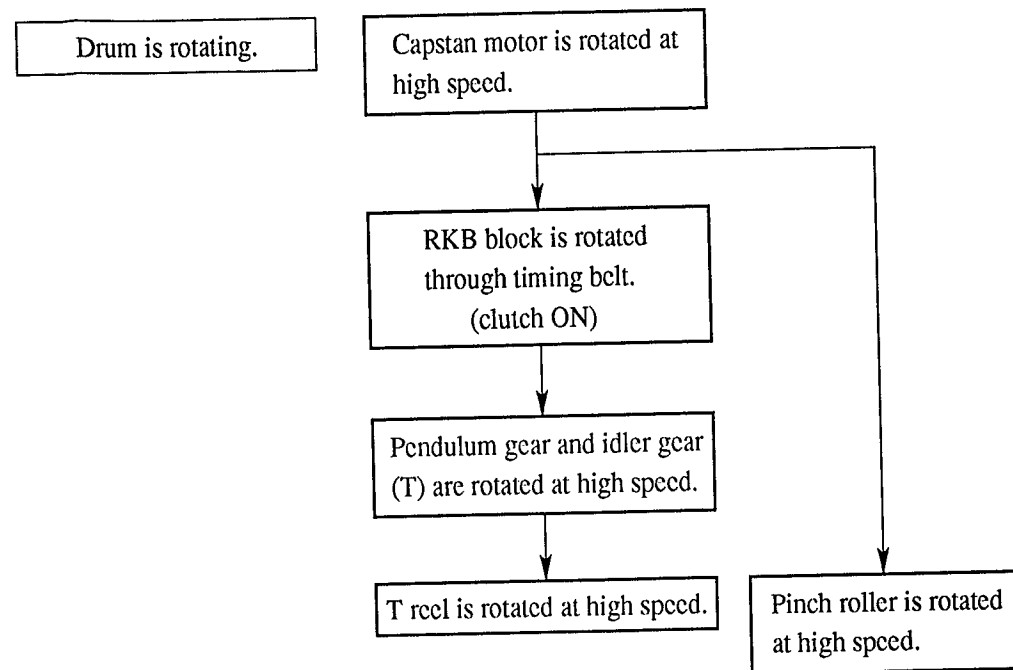


Fig. 5-1



6. Playback → CUE



※ Difference from (Stop → Playback)

- ① Capstan motor is rotating at high speed.
- ② Pendulum gear is meshed with idler gear (T) from the beginning.

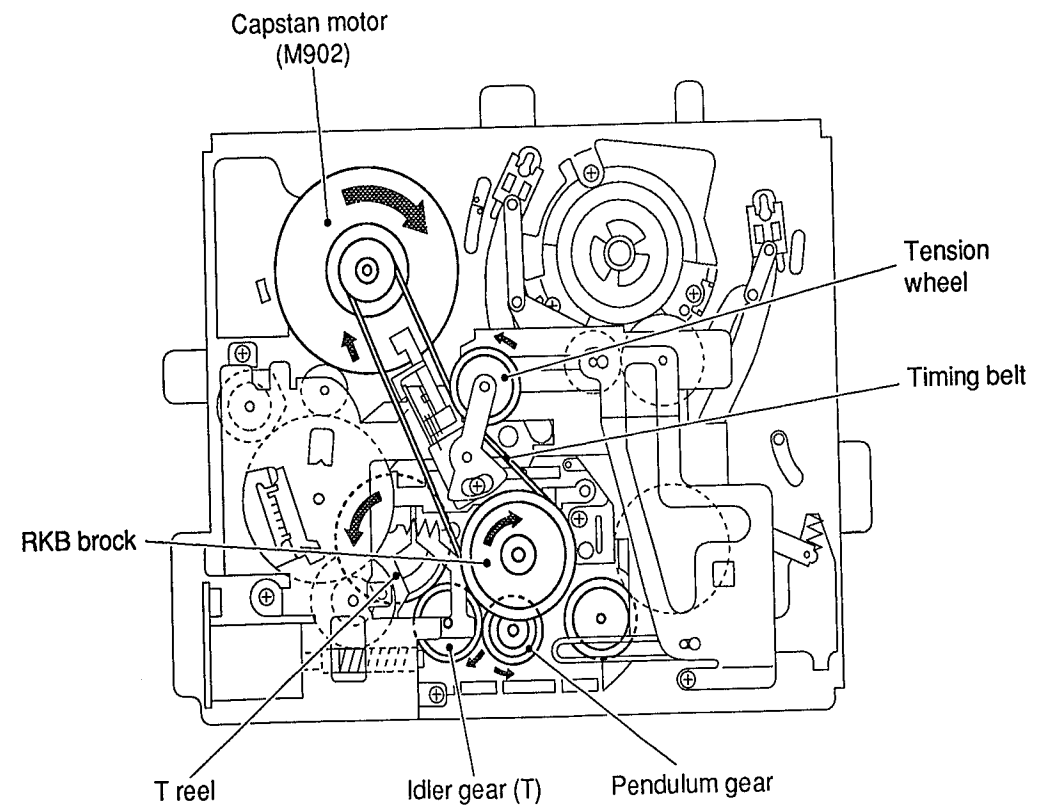
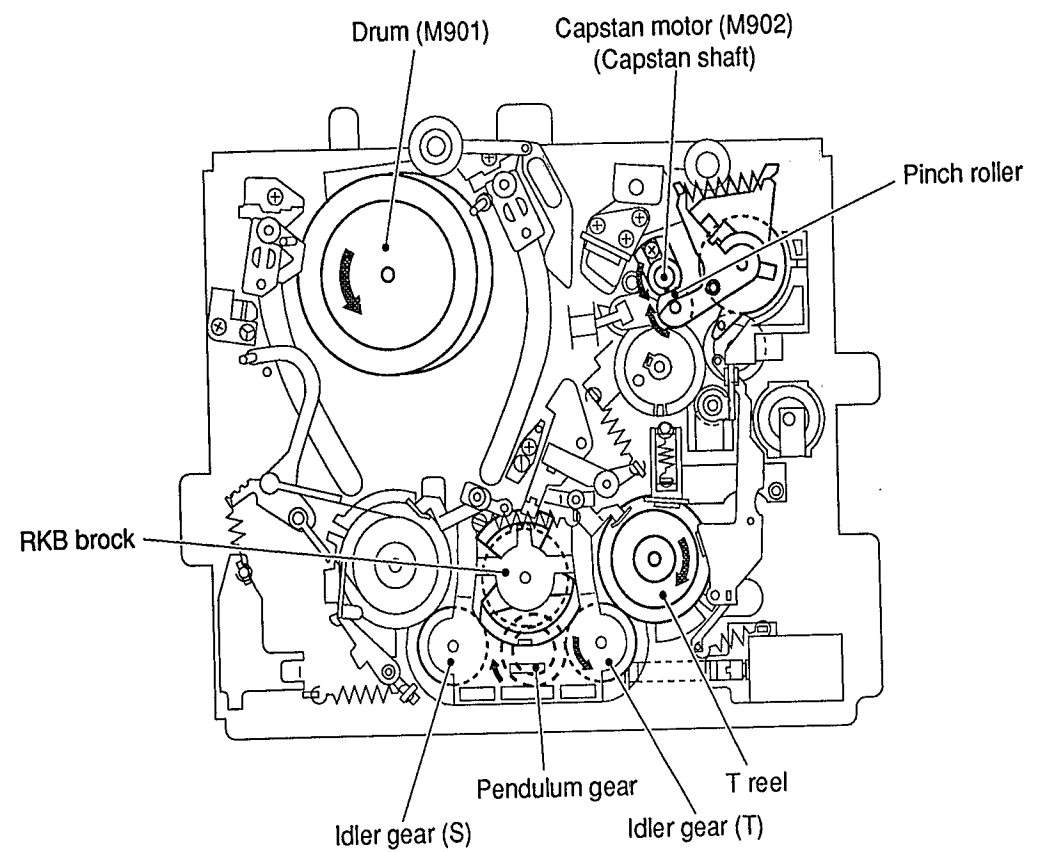


Fig. 6-1

7. Playback → REW

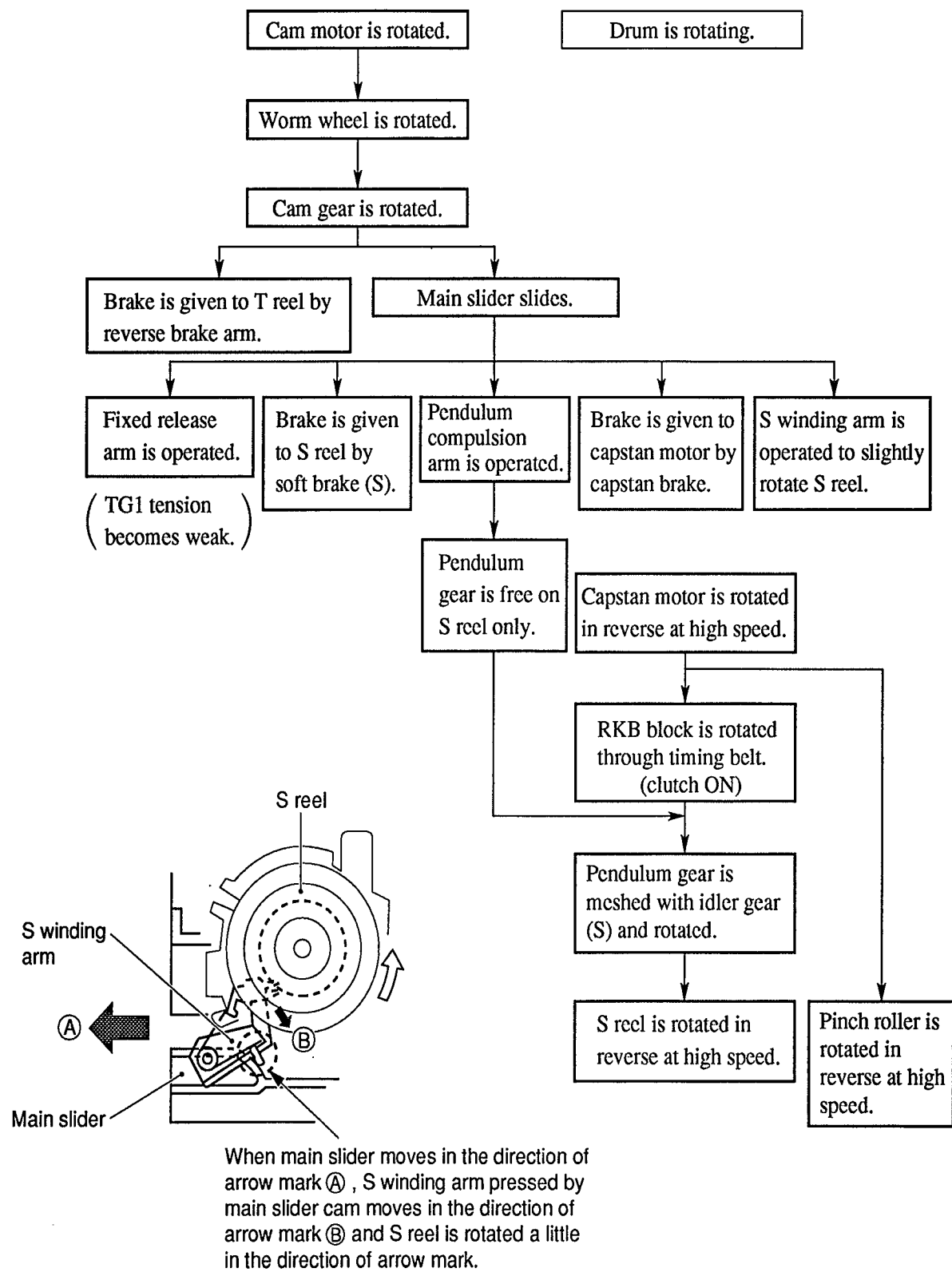


Fig. 7-1

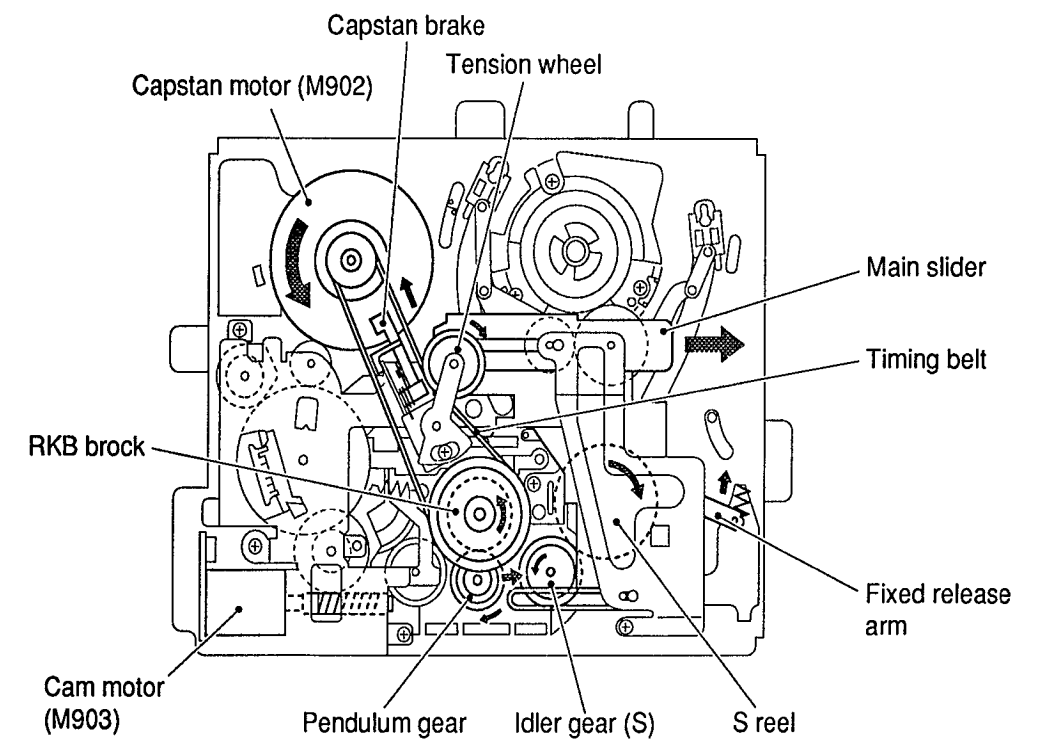
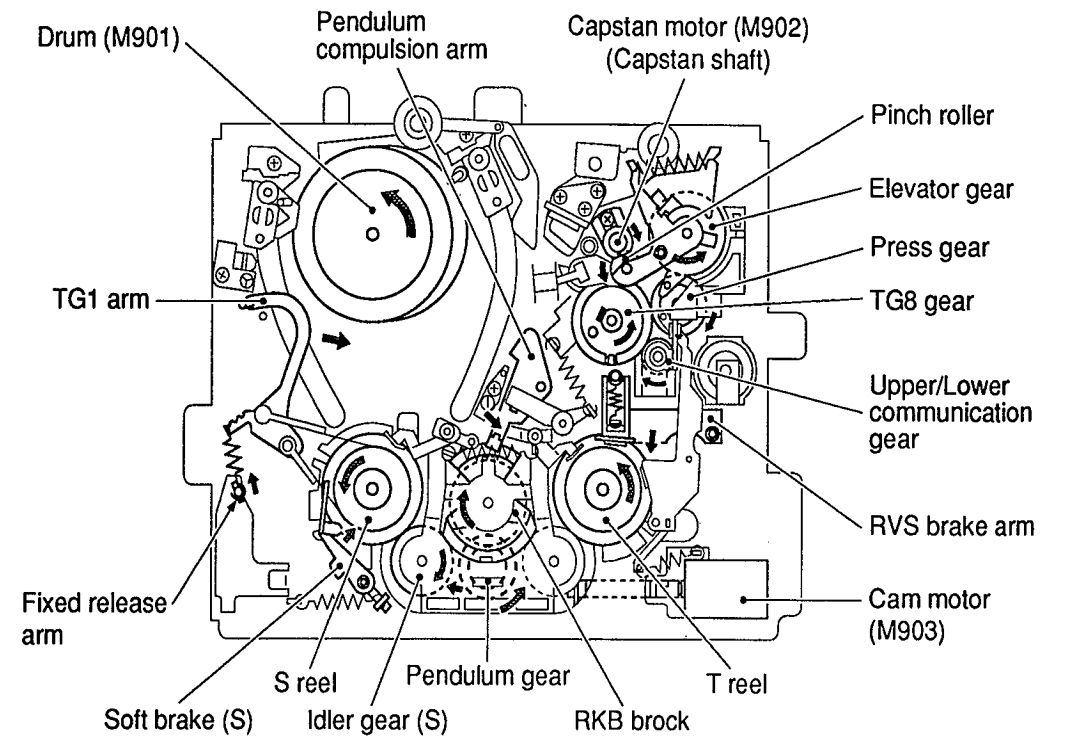
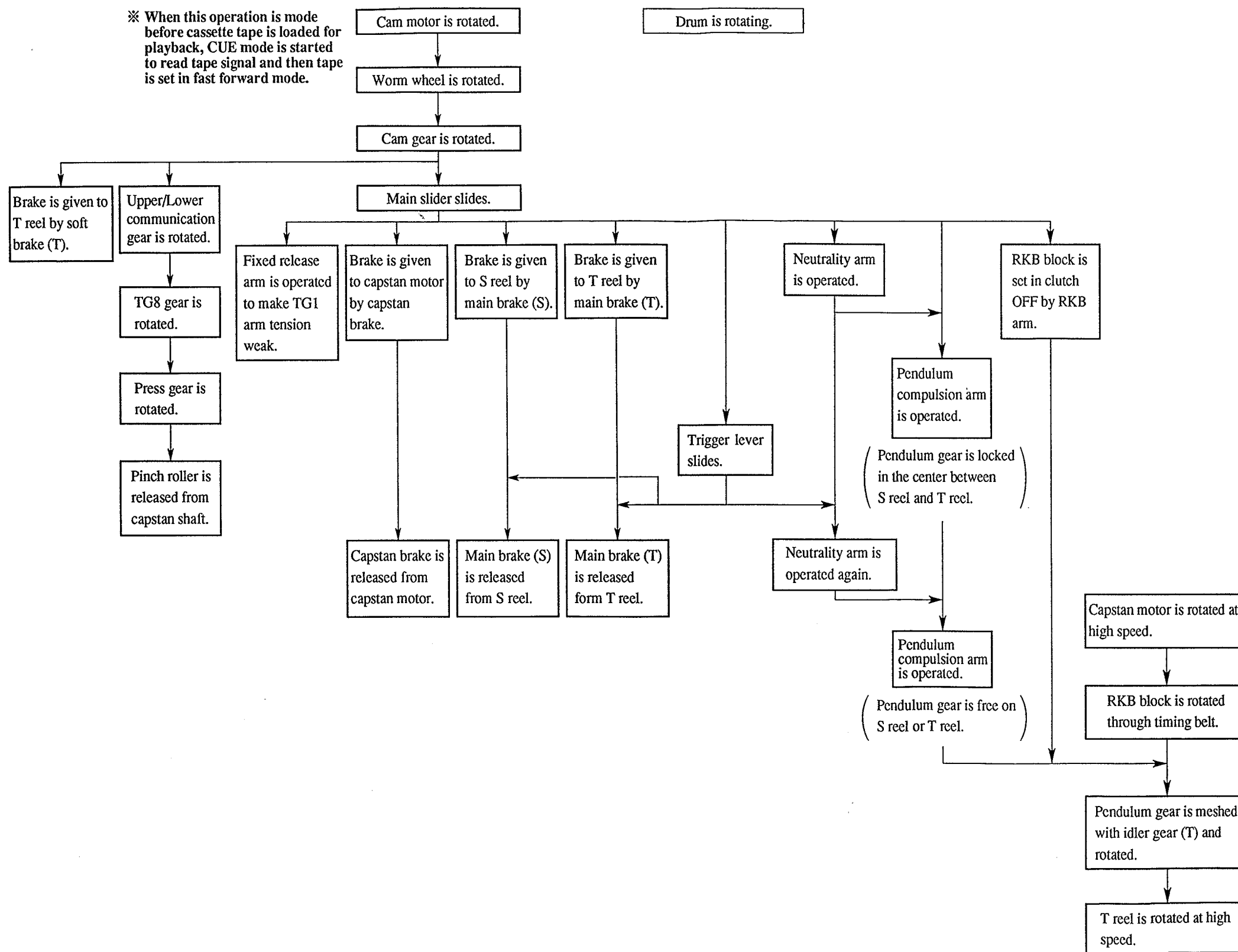


Fig. 7-2

8. Stop → Fast forward (FF)

※ When this operation is mode before cassette tape is loaded for playback, CUE mode is started to read tape signal and then tape is set in fast forward mode.



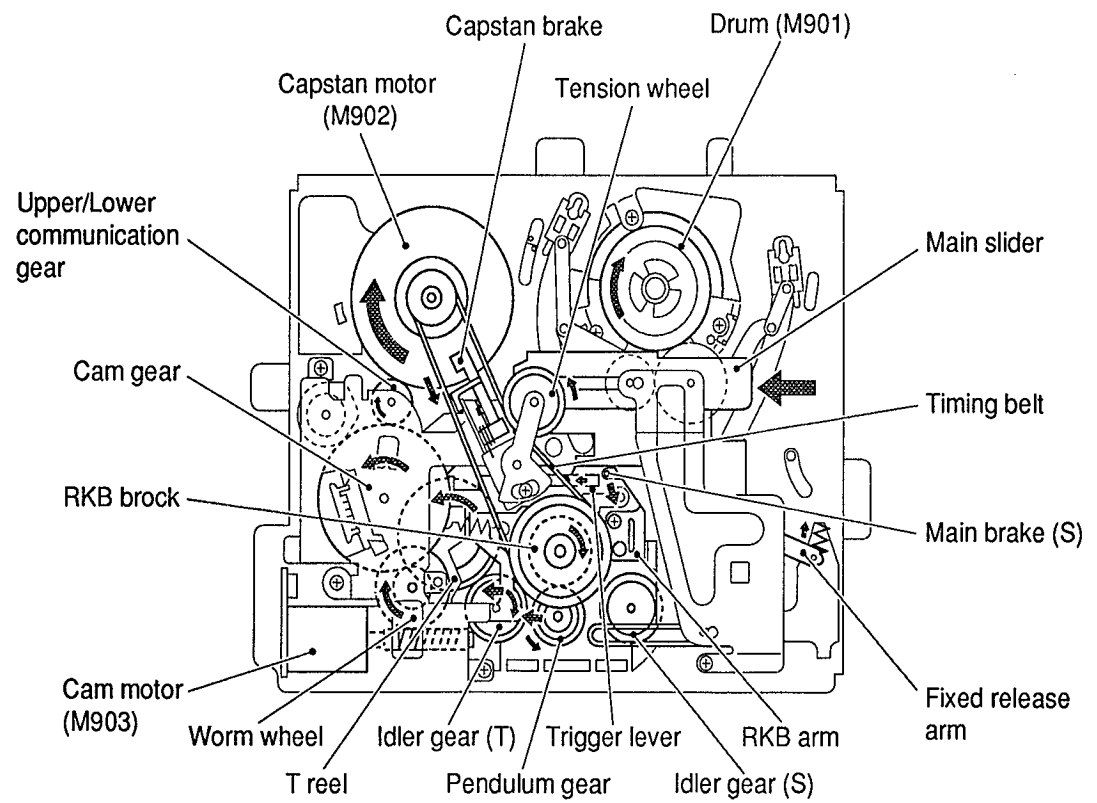
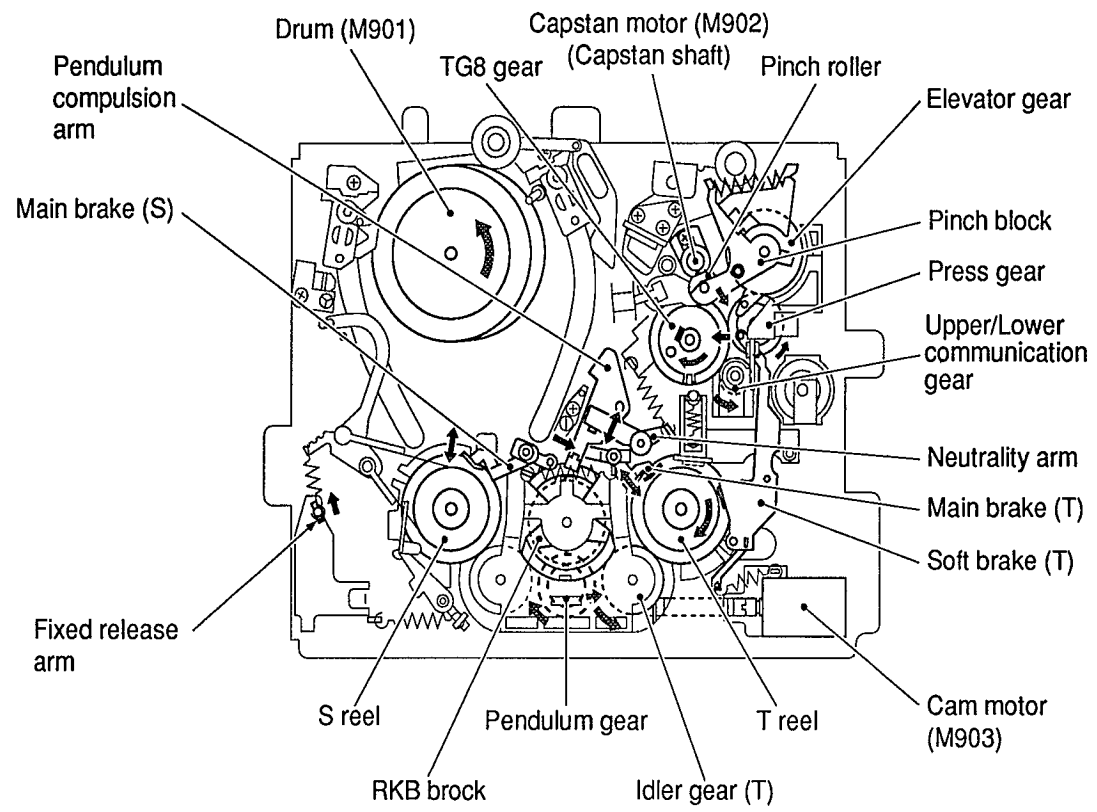
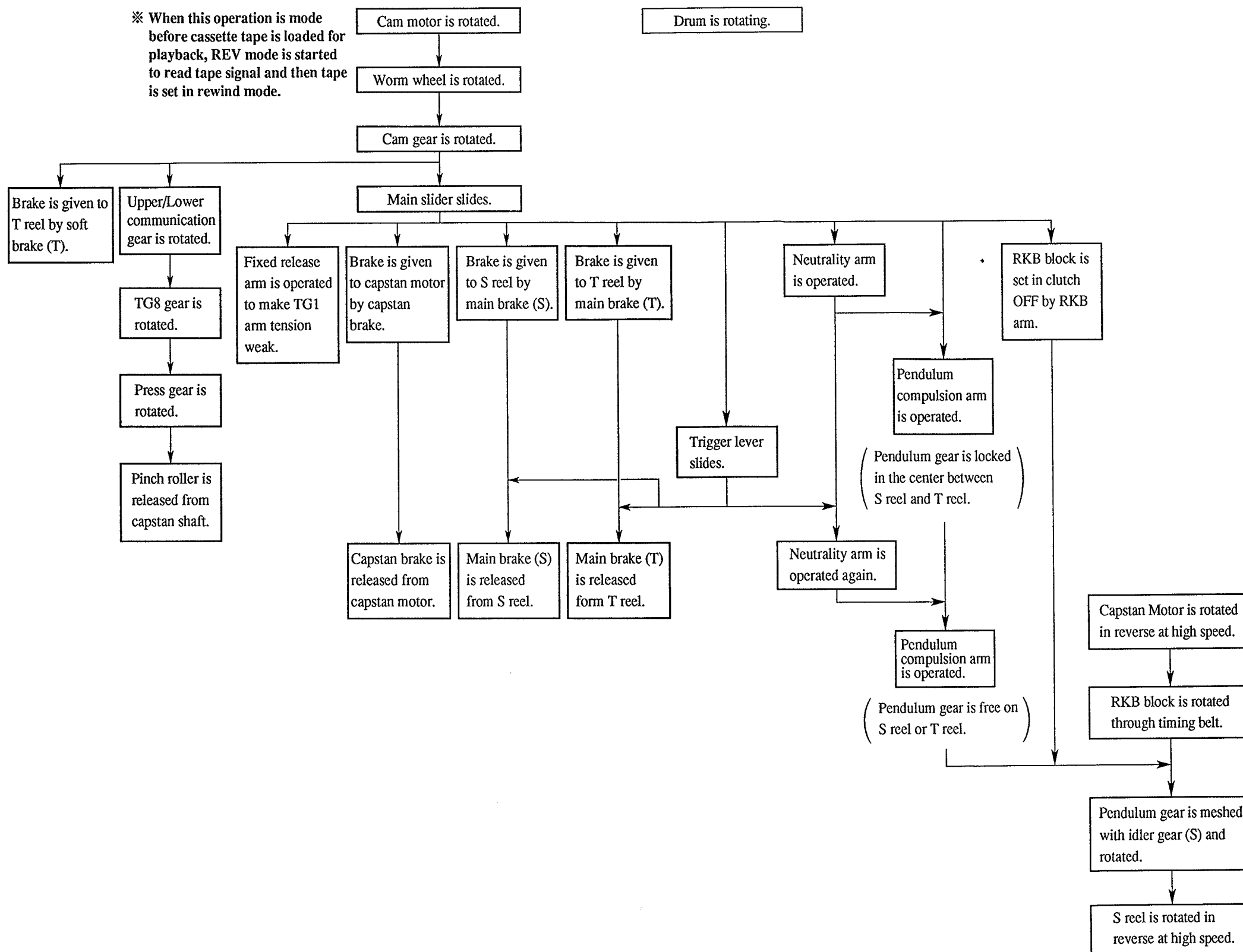


Fig. 8-1

9. Stop → Rewind (REW)

※ When this operation is mode before cassette tape is loaded for playback, REV mode is started to read tape signal and then tape is set in rewind mode.



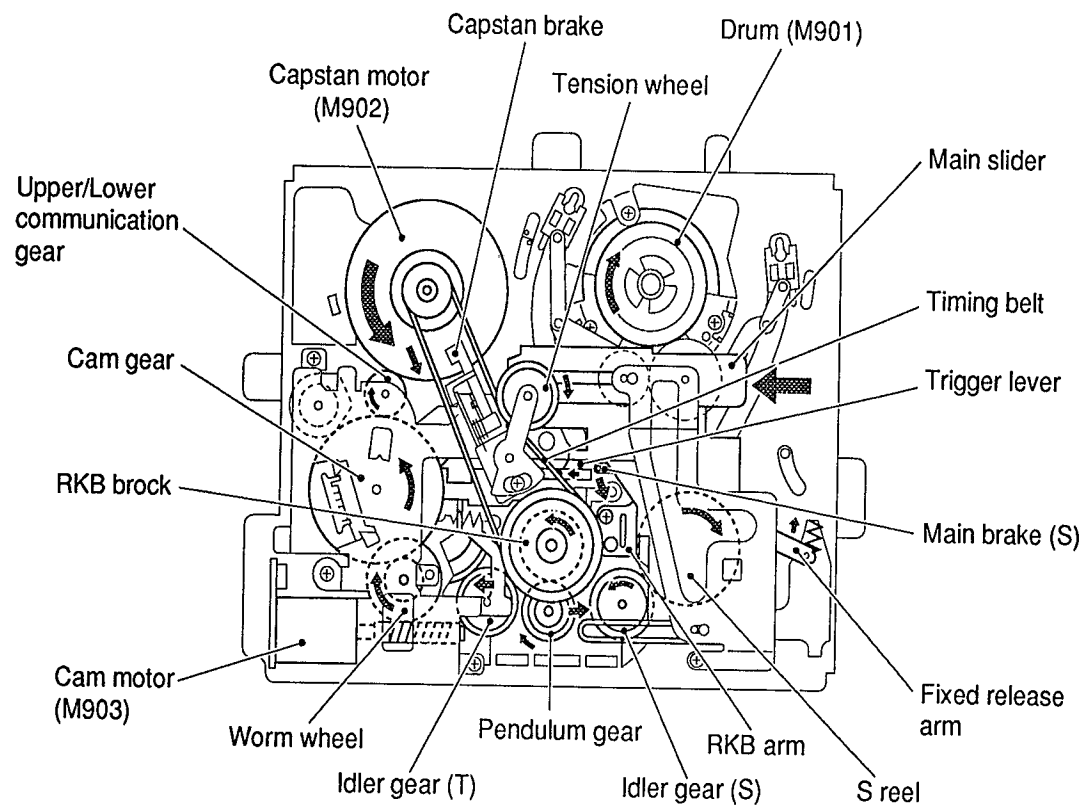
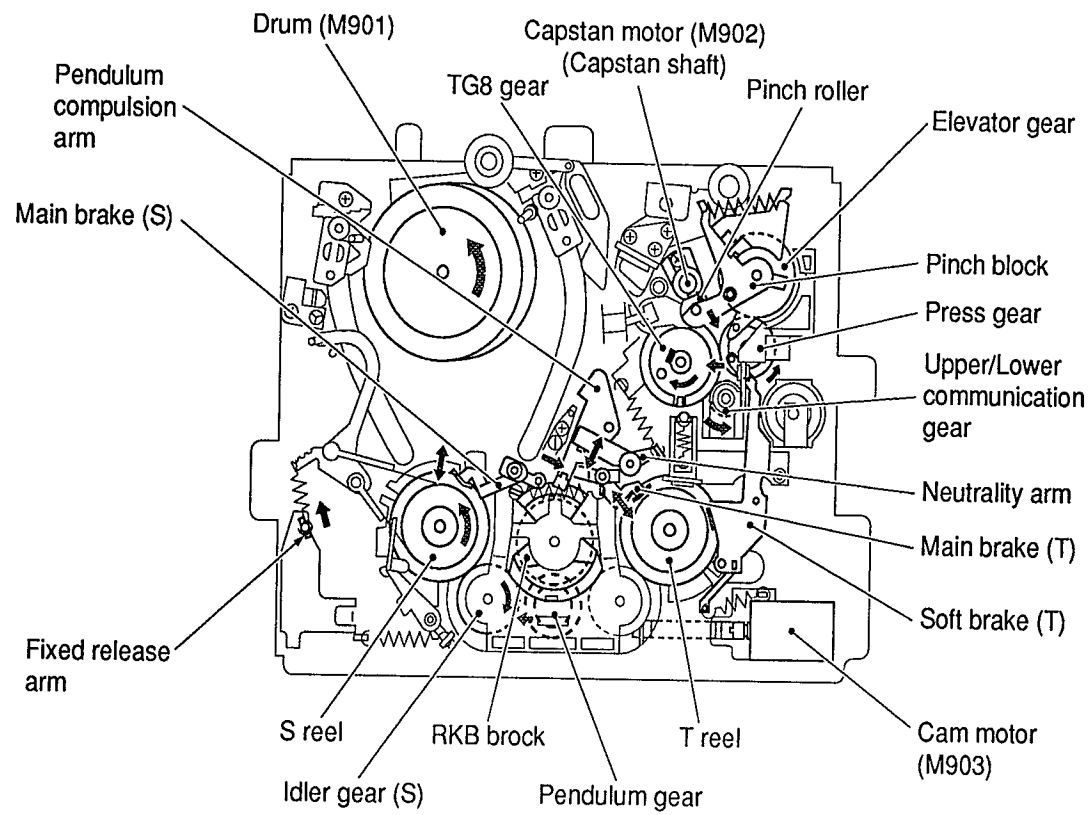
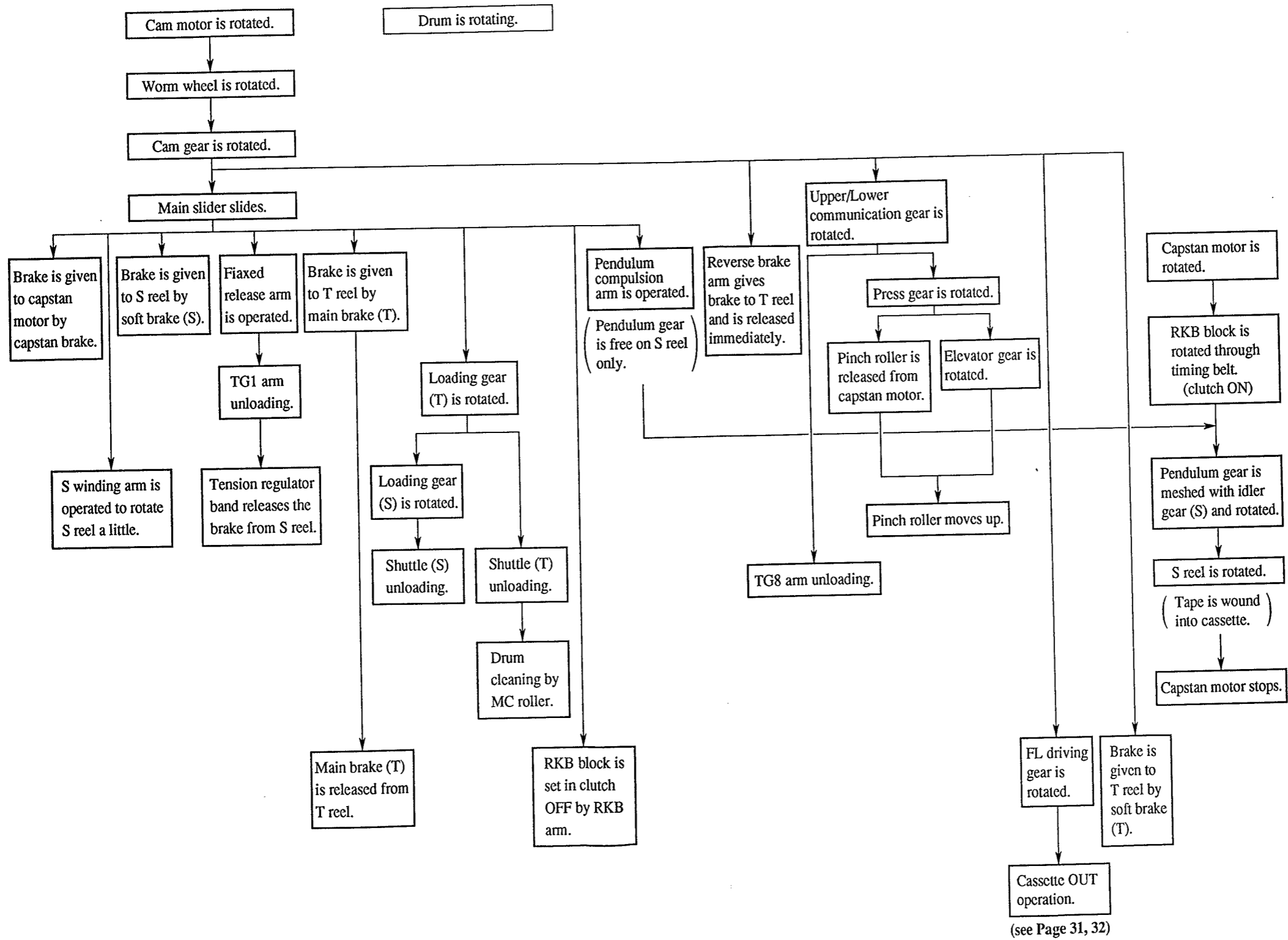


Fig. 9-1

10. Stop → Unloading → Eject



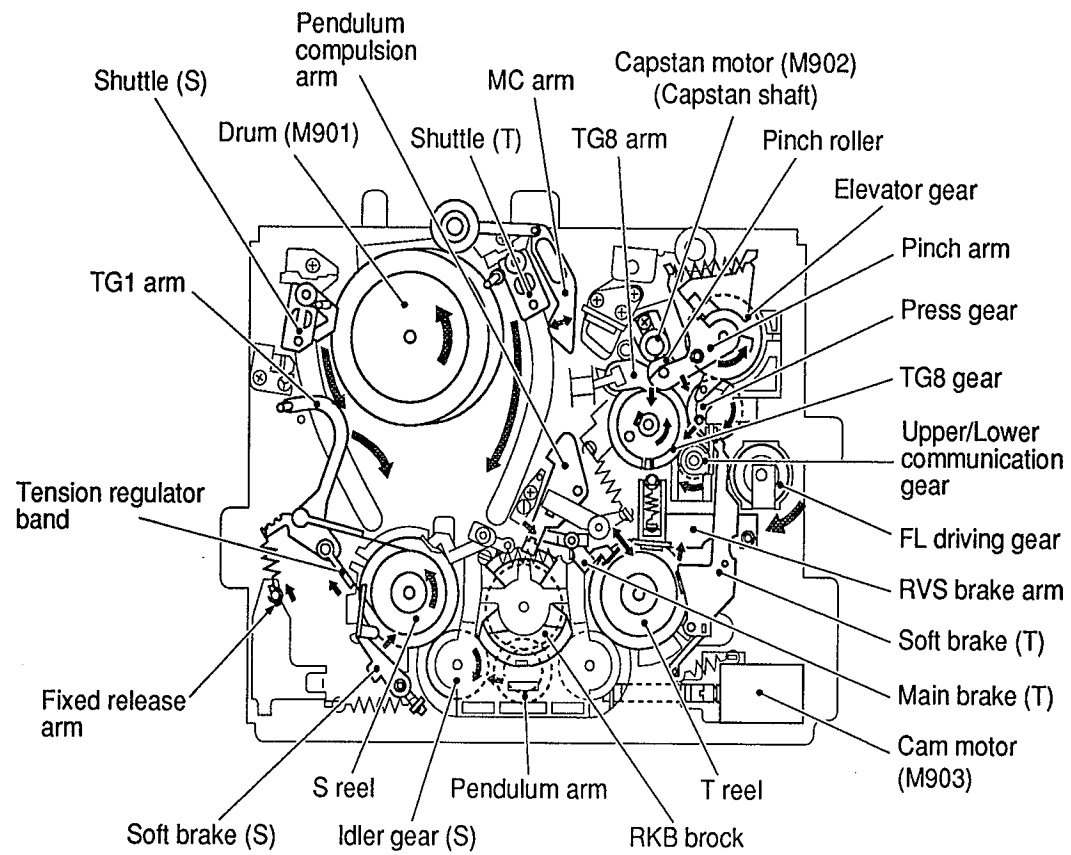


Fig. 10-1

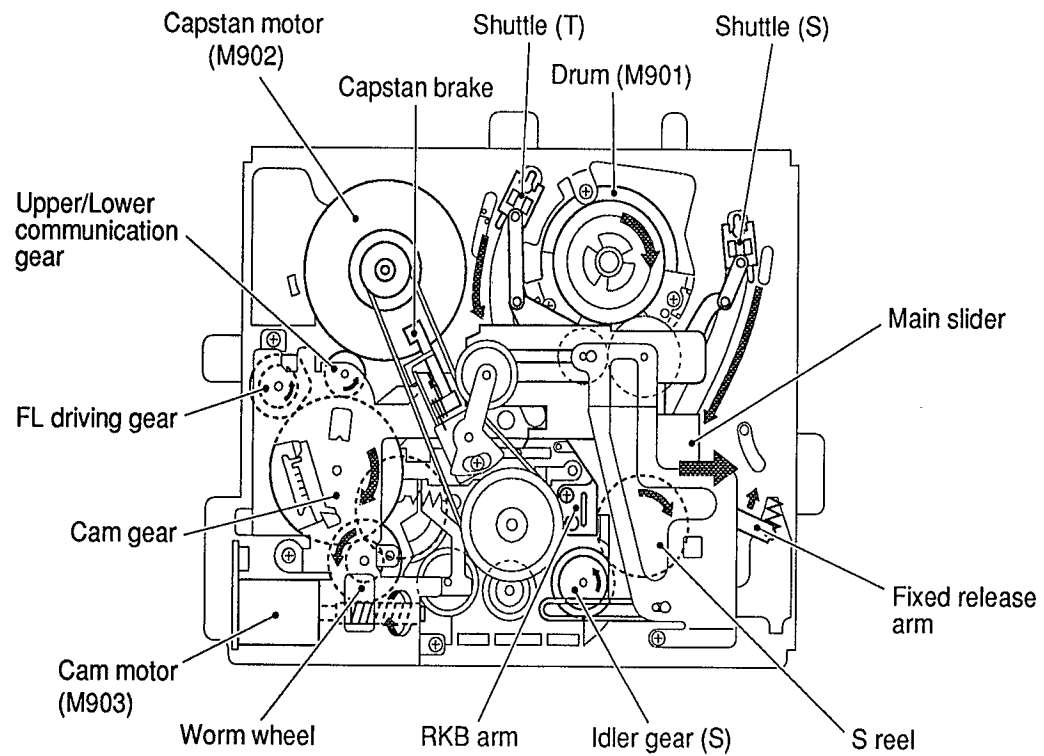


Fig. 10-2

1 Main slider moves in the direction of arrow mark 1 and RKB arm is pushed up in the direction of arrow mark 2 by step A.

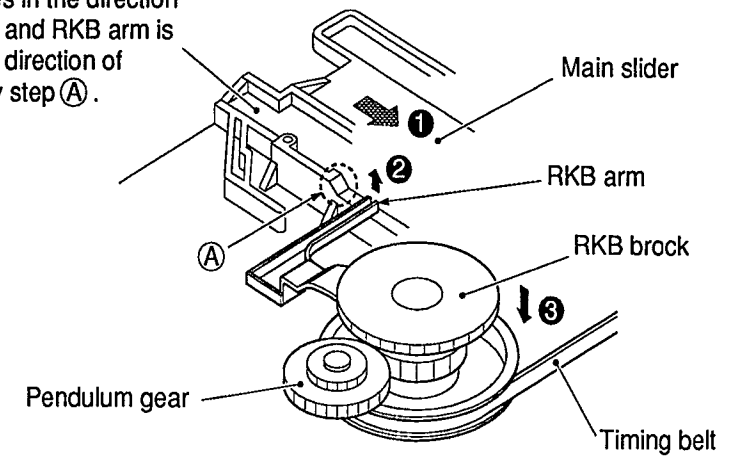
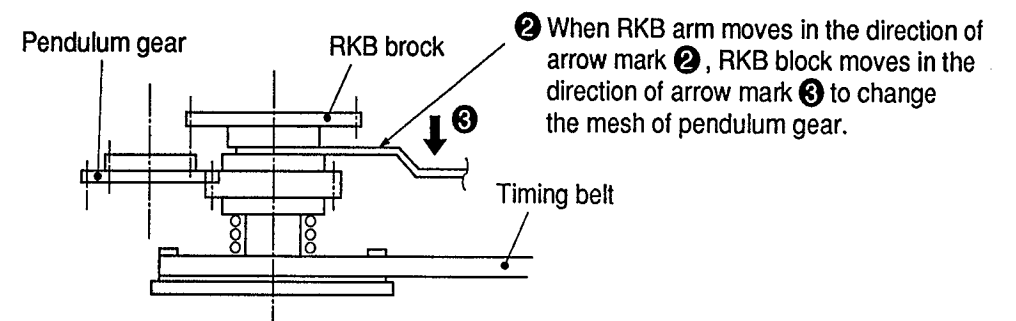
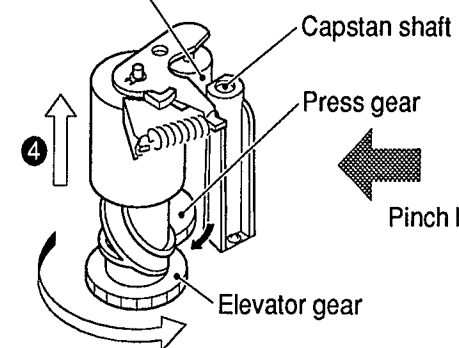


Fig. 10-3

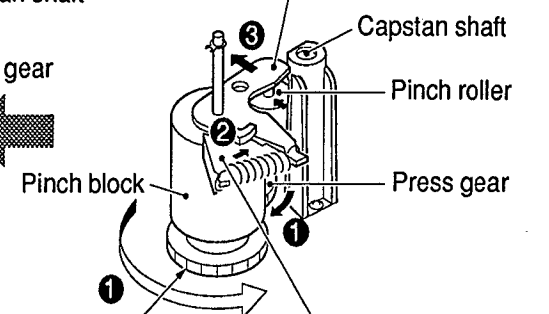


2 When RKB arm moves in the direction of arrow mark 2, RKB block moves in the direction of arrow mark 3 to change the mesh of pendulum gear.

4 Pinch roller moves up in the direction of arrow mark 4.



3 Pinch arm moves in the direction of arrow mark 3 and pinch roller is released from capstan shaft.



1 Press gear and elevator gear are rotated in the direction of arrow mark 1.

2 Pinch block pushed by press gear cam moves in the direction of arrow mark 2.

Fig. 10-3

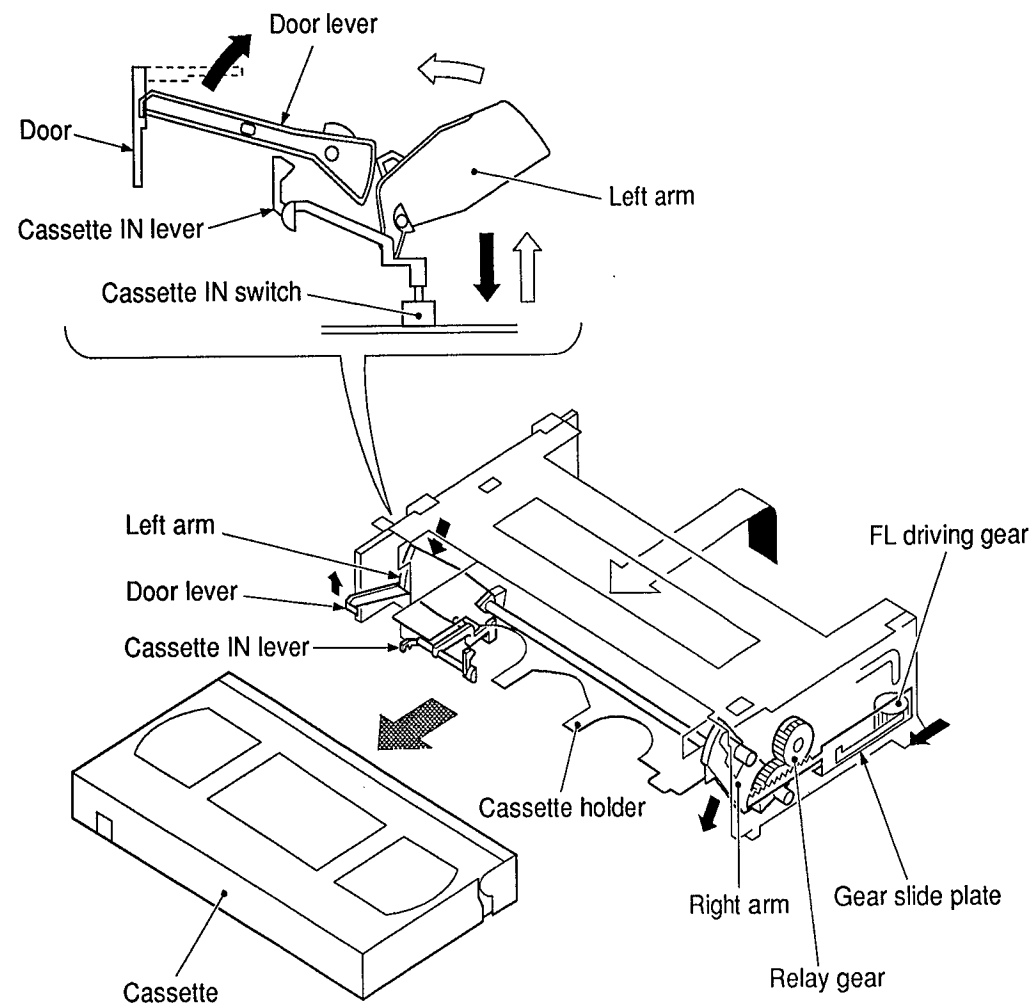
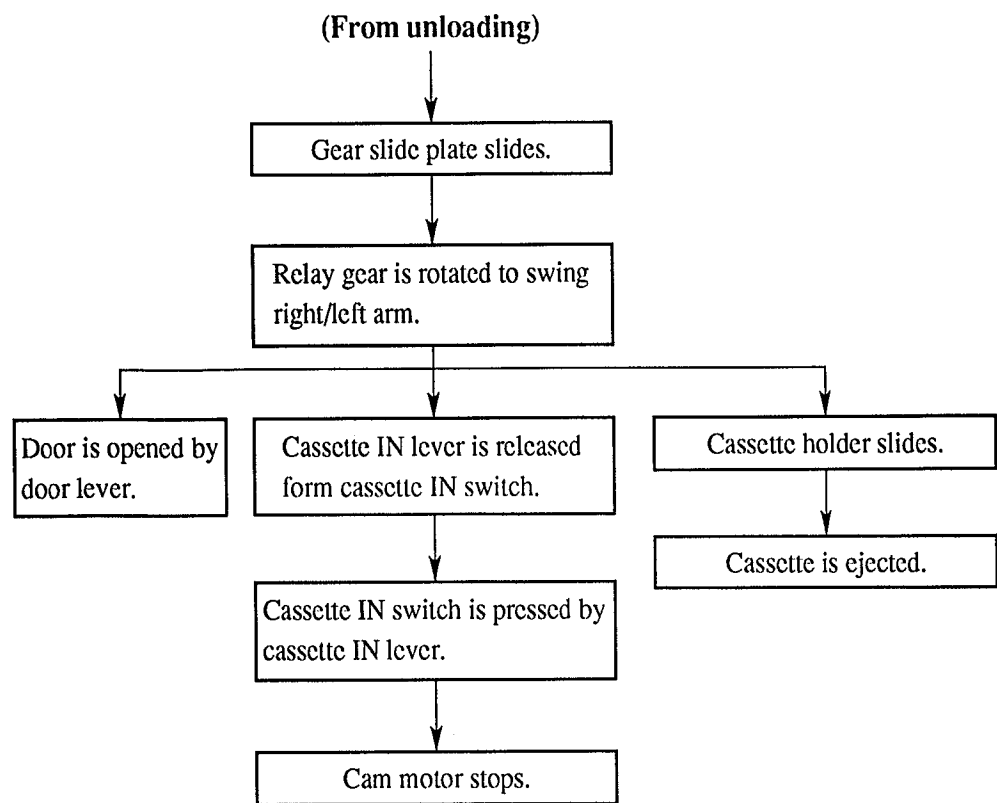


Fig. 10-4