



ENGLISH

FRANÇAIS

ESPAÑOL

# OWNER'S MANUAL

# FRENCH DOOR

# REFRIGERATOR

Please read this owner's manual thoroughly before operating and keep it handy for reference at all times.

LFX31995\*\*



P/No. : MFL62184433

[www.lg.com](http://www.lg.com)

# TABLE OF CONTENTS

## 4 PRODUCT FEATURES

---

## 5 IMPORTANT SAFETY INSTRUCTIONS

---

## 8 COMPONENTS

---

- 8 Refrigerator Exterior
- 9 Refrigerator Interior

## 10 INSTALLATION

---

- 10 Installation Overview
- 10 Specifications
  - 11 - LCD Display
  - 11 - Modem FCC / IC Certification
- 12 Unpacking Your Refrigerator
- 12 Choosing the Proper Location
  - 12 - Flooring
  - 13 - Ambient Temperature
  - 13 - Measuring the Clearances
- 13 Removing/Assembling the Refrigerator Door Handles
- 14 Removing/Assembling the Freezer Drawer Handle
- 14 Removing/Assembling the Doors and Drawers
  - 14 - Removing the Left Refrigerator Door
  - 16 - Removing the Right Refrigerator Door
  - 17 - Assembling the Right Refrigerator Door
  - 18 - Assembling the Left Refrigerator Door
  - 19 - Removing the Freezer Drawers
  - 21 - Assembling the Freezer Drawers
- 22 Connecting the Water Line
  - 22 - Before You Begin
  - 22 - Water Pressure
  - 22 - What You Will Need
  - 23 - Water Line Installation Instructions

- 25 Turning on the Power
- 26 Leveling and Door Alignment
  - 26 - Leveling
  - 26 - Door Alignment

## 27 HOW TO USE

---

- 27 Before Use
- 28 Control Panel
- 30 In-Door Ice Bin
  - 30 - Detaching the In-Door Ice Bin
  - 30 - Assembling the In-Door Ice Bin
- 31 Automatic Icemaker
  - 31 - Turning the Automatic Icemaker ON or OFF
  - 32 - When You Should Turn the Icemaker OFF
  - 32 - Normal Sounds You May Hear
  - 32 - Preparing for Vacation
- 33 Ice and Water Dispenser
  - 33 - Dispenser
  - 33 - Using the Dispenser
  - 33 - Locking the Dispenser
  - 33 - Cleaning the Dispenser Stand
- 34 Storing Food
  - 34 - Food Preservation Location
  - 35 - Food Storage Tips
  - 35 - Storing Frozen Food
- 36 Humidity Controlled Crisper and Glide'N'Serve
- 37 Detaching and Assembling the Storage Bins
- 38 Adjusting the Refrigerator Shelves

## 39 SMART REFRIGERATOR DISPLAY SCREEN

---

- 39 Before Use
- 39 - Smart Refrigerator Display Screen
- 39 - Touch Button Function
- 39 - Necessary Installation Parts
- 40 - Note Before Using
- 41 - Downloading The Smart Phone Application
- 41 - Turning the Touch Screen ON or OFF.
- 42 Home Screen
- 43 Basic Buttons
- 44 Food Manager
- 45 - Food Manager by Category
- 46 - Frequently used Items
- 47 - Food Manager using Keypad
- 49 - Function Menu
- 51 - Send Food List to Phone
- 53 Recipes
- 54 - Recipes Search
- 55 - Food in Refrigerator
- 56 - LG Smart Range Recipes
- 57 Grocery
- 57 - Add New Food
- 59 - To Add Food to the Grocery List using a Keypad
- 59 - To Add the Grocery Items to the Food Manager
- 60 - To Delete Groceries from the List
- 60 - Phone
- 63 Memo
- 64 - Creating a Memo
- 67 - Delete a Memo
- 68 - Save Memo to Home Screen
- 69 Google Calendar
- 69 - Log In to Your Google Account
- 71 - View Events
- 72 Photo Album
- 75 - View Photos
- 76 - Saving Photo to Home Screen
- 76 - Deleting Photo to Home Screen

- 77 REF Manager
- 77 Smart Saving
- 77 - Demand Response Functionality
- 80 - Delay Defrost Capability
- 81 Settings
- 81 - REF Information
- 82 - Smart Diagnosis
- 83 - Wi-Fi
- 85 - Date & Time
- 86 - Brightness
- 86 - Volume
- 87 - Zigbee
- 88 - Update
- 89 - Edit Homescreen
- 89 - Screen Saver
- 89 - Freshness Tracker Alert
- 90 - Log In
- 91 - Factory Reset
- 91 - Demo Mode
- 93 Using the Widgets

## 97 MAINTENANCE

---

- 97 Cleaning
- 98 Replacing the Fresh Air Filter
- 99 Replacing the Water Filter

## 103 SMART DIAGNOSIS

---

- 103 Audible Diagnosis (through call center)
- 104 Wi-Fi Diagnosis
- 104 Self Diagnosis using Smart Phone (Audible, Wi-Fi)

## 105 TROUBLESHOOTING

---

## 115 WARRANTY

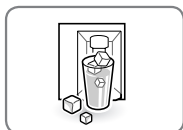
---

## 119 OPEN SOURCE SOFTWARE NOTICE

---

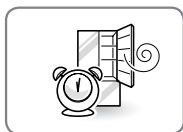
## PRODUCT FEATURES

\* Depending on the model, some of the following functions may not be available.



### FILTERED WATER AND ICE DISPENSER

The water dispenser dispenses fresh, chilled water. The ice dispenser dispenses cubed and crushed ice.



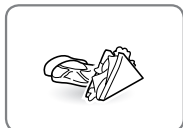
### DOOR ALARM

The Door Alarm function is designed to prevent refrigerator malfunctioning that could occur if a refrigerator door or freezer drawer remains open. If a refrigerator door or freezer drawer is left open for more than 60 seconds, a warning alarm sounds in 30 second intervals.



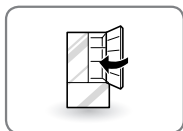
### HUMIDITY CONTROLLED CRISPER

The Humidity Controlled Crisper is designed to help keep your fruits and vegetables fresh and crisp. You can control the amount of humidity in the crisper by adjusting the setting between Low and High.



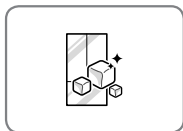
### GLIDE'N'SERVE

Glide'N'Serve provides storage space with a variable temperature control that keeps the compartment colder than the refrigerator. It is a convenient place to store sandwiches or meat to be cooked.



### AUTO CLOSING HINGE

The refrigerator doors and freezer drawers close automatically with a slight push. (The door only closes automatically when it is open at an angle less than 30°.)



### ICE PLUS

Ice production can be increased by approximately 20 percent when the freezer section is maintained at the coldest temperature for a 24-hour period.

# IMPORTANT SAFETY INSTRUCTIONS

## **READ ALL INSTRUCTIONS BEFORE USING THE APPLIANCE.**

This guide contains many important safety messages. Always **read and obey** all safety messages.



This is the safety alert symbol. It alerts you to safety messages that inform you of hazards that can kill or hurt you or others, or cause damage to the product.

All safety messages will be preceded by the safety alert symbol and the hazard signal word WARNING or CAUTION. These words mean:



**WARNING** You can be killed or seriously injured if you do not follow instructions.



**CAUTION** Indicates an imminently hazardous situation which, if not avoided, may result in minor or moderate injury, or product damage.



**WARNING**

**To reduce the risk of fire, electric shock, or personal injury when using your product, basic safety precautions should be followed, including the following.**

### Power

- NEVER unplug your refrigerator by pulling on the power cord. Always grip the plug firmly and pull it straight out from the outlet.
- Immediately repair or replace all power cords that have become frayed or otherwise damaged. Do not use a cord that shows cracks or abrasion damage along its length or at either the plug or connector end.
- Do not use an uncertified power outlet.
- Unplug the power plug immediately in the event of a blackout or thunderstorm.
- Plug in the power plug with the power cord facing downward.

### Installation

- Contact an authorized service center when you install or relocate the refrigerator.
- When moving your refrigerator away from the wall, be careful not to roll over or damage the power cord.
- Connect this product to a dedicated grounded electric outlet conforming with the rating prior to use. It is the user's responsibility to replace a standard 2-prong wall outlet with a standard 3-prong wall outlet.
- Do not install the refrigerator where there may be a danger of falling.

### Use

- DO NOT allow children to climb, stand, or hang on the refrigerator doors or shelves in the refrigerator. They could damage the refrigerator and seriously injure themselves.
- Do not place heavy objects on the dispenser of the refrigerator or hang onto it.
- Do not place heavy or dangerous objects (bottles with liquid) on the refrigerator.
- Do not put live animals inside of the refrigerator.
- Do not allow children to climb into the product when it is in use.
- In the event of a gas leak (propane/LPG), ventilate sufficiently and contact an authorized service center before use. Do not touch or disassemble the electric outlet of the refrigerator.
- In the event of a refrigerant leak, move flammable objects away from the refrigerator. Ventilate sufficiently and contact an authorized service center.
- Do not use or place flammable substances (chemicals, medicine, cosmetics, etc) near the refrigerator or store them inside the refrigerator. Do not place the refrigerator in the vicinity of flammable gas.

**READ ALL INSTRUCTIONS BEFORE USING THE APPLIANCE.**

To reduce the risk of fire, electric shock, or personal injury when using your product, basic safety precautions should be followed, including the following.

- Do not use this product for special purposes (storage of medicine or test materials or for ships, etc).
- Unplug the power plug before cleaning or repairing the refrigerator.
- When you replace the light bulb in the refrigerator, unplug the refrigerator or turn off the power.
- Do not modify or extend the power cord.
- Do not use a dryer to dry the interior. Do not light a candle to remove the interior odor.
- For your safety, this appliance must be properly grounded. Have the wall outlet and the circuit checked by a qualified electrician to make sure the outlet is properly grounded.
- Do not use an outlet that can be turned off with a switch. Do not use an extension cord. It is the user's responsibility to replace a standard 2-prong wall outlet with a standard 3-prong wall outlet.
- Do not, under any circumstances, cut or remove the third (ground) prong from the power cord.
- Do not use an adapter plug and plug the power plug into a multi-outlet extension cord.
- Disconnect the power cord immediately if you hear a noise, smell a strange odor or detect smoke.
- Turn the power off if water or dust penetrates into the refrigerator. Call a service agent.
- Do not disassemble or modify the refrigerator.
- Do not put hands, feet, or metal objects below or behind the refrigerator.
- Do not operate the refrigerator or touch the power cord with wet hands.
- In refrigerators with automatic icemakers, avoid contact with the moving parts of the ejector mechanism or with the heating element that releases the cubes. Do not place fingers or hands on the automatic ice-making mechanism while the refrigerator is plugged in.
- When dispensing ice from the dispenser, do not use crystal ceramics.
- Do not touch the cold surfaces in the freezer compartment with wet or damp hands, when your refrigerator is in operation.
- Do not put glass containers, glass bottles or soda in the freezer.
- This appliance is not intended for use by persons (including children) with reduced physical, sensory or mental capabilities, or lack of experience and knowledge, unless they have been given supervision or instruction concerning the use of the appliance by a person responsible for their safety.
- Do not refreeze frozen food that have thawed completely. It may result in a serious health issue.
- If you are throwing away your old refrigerator, make sure the CFC coolant is removed for proper disposal by a qualified servicer. If you release CFC coolant, you may be fined or imprisoned in accordance with the relevant environmental law.
- Junked or abandoned refrigerators are dangerous, even if they are sitting for only a few days. When disposing the refrigerator, remove the packing materials from the door or take off the doors but leave the shelves in place so that children may not easily climb inside.

## **READ ALL INSTRUCTIONS BEFORE USING THE APPLIANCE.**

To reduce the risk of fire, electric shock, or personal injury when using your product, basic safety precautions should be followed, including the following.

### CAUTION

#### **Installation**

- The refrigerator must be properly installed in accordance with the Installer Instructions that were taped to the front of the refrigerator.
- Be careful when you unpack and install the refrigerator. Immediately dispose of packing materials (plastic) out of reach of children.

#### **Use**

- Close the door carefully when children are around.
- Keep fingers out of pinch point areas; clearances between the doors and cabinets are necessarily small. Be careful closing doors when children are in the area.
- If you store food properly, beware that it may fall and cause injury.

#### **Maintenance**

- Do not use strong detergents like wax or thinners for cleaning. Clean with a soft fabric.
- Wipe foreign objects (dust, water, etc) off the prongs of the power plug and contact areas regularly.

### WARNING

#### **Warning when setting the Wi-Fi network**

- LG Electronics is not responsible for any network connection problems or any faults, malfunctions, or errors caused by network connection.
- Network connection may not work properly depending on Internet service provider.
- Wireless network can experience interference from other devices with 2.4 GHz frequency (wireless phone, Bluetooth device, or microwave oven). Interference may also be caused by devices with 5 GHz frequency, the same as any other Wi-Fi devices.
- The surrounding wireless environment can make wireless network service run slowly.
- Failure to turn off all local home networks may cause excessive traffic on some devices.
- Invalid settings of network devices (wired/wireless line sharer, hub) can cause the appliance to operate slowly or not operate properly. Install the devices correctly according to the appropriate manual and set network.
- Certain connected features (such as Program Update) will operate slowly if the Wi-Fi connection strength is not strong. To improve the Wi-Fi signal strength, it is recommended to purchase a Wi-Fi repeater.

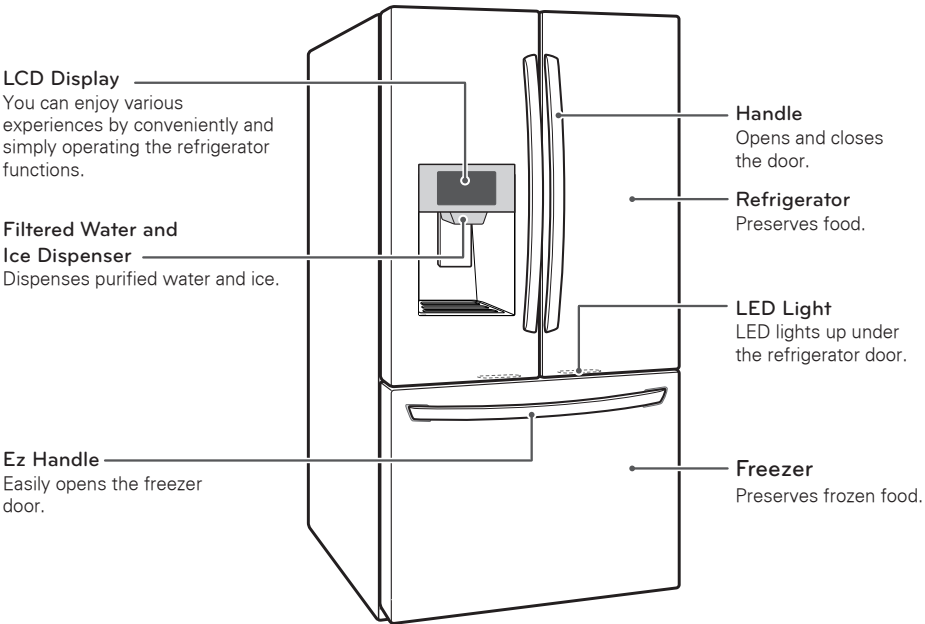
# **SAVE THESE INSTRUCTIONS**

# COMPONENTS

Use this page to become more familiar with the parts and features of your refrigerator. Page references are included for your convenience.

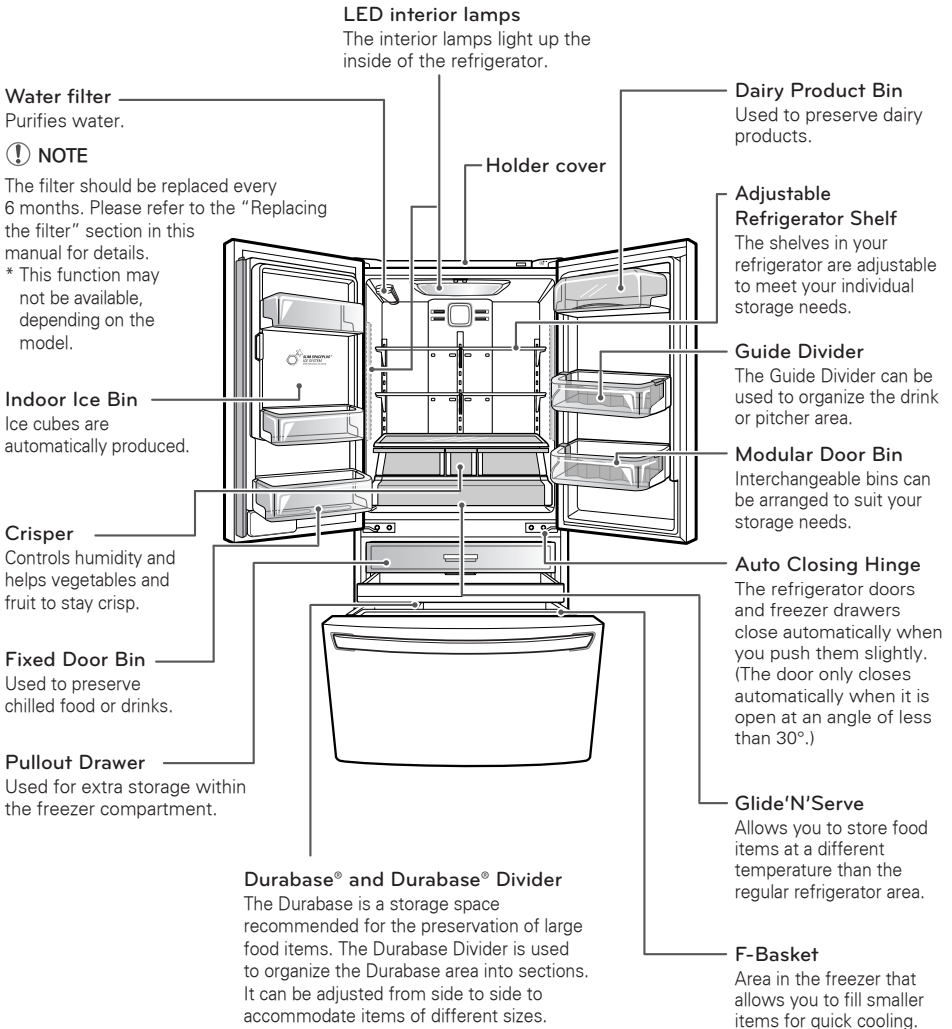
\*The appearance and specifications of the actual product may differ depending on the model.

## Refrigerator Exterior





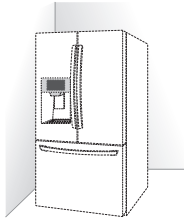
## Refrigerator Interior



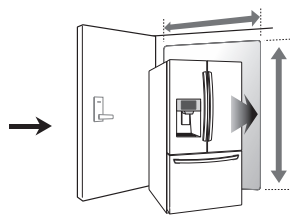
# INSTALLATION

## Installation Overview

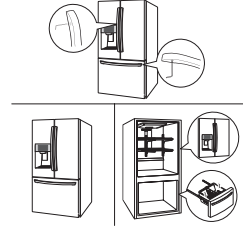
Please read the following installation instructions first after purchasing this product or transporting it to another location.



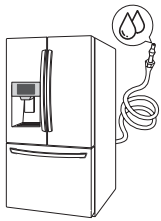
1 Unpacking your refrigerator



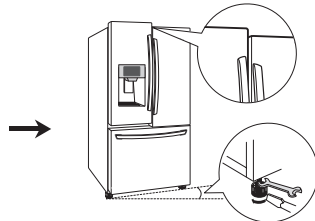
2 Choosing the proper location



3 Disassembling/Assembling



4 Connecting the water supply and water line



5 Leveling and Door Alignment

## Specifications

The appearance and specifications listed in this manual may vary due to constant product improvements.

Bottom-freezer refrigerator model	
Dimensions	35 3/4" (W) X 36 1/4" (D) X 70 1/4" (H), 48 1/8" (D w/ door open) 908 mm (W) X 921 mm (D) X 1782 mm (H), 1221 mm (D w/ door open)
Net weight	337 lb. (153 kg)
Refrigerator storage capacity	20.7 cu. ft.
Freezer storage capacity	10.0 cu. ft.

## LCD Display

Processor	Telechips (Cortex)
ROM	4GB
RAM	512MB
LCD	8" TFT-LCD(800 x 480)
Network	802.11 b/g/n

## Modem FCC / IC Certification

### - Product Specification

	WLAN (Wi-Fi)	ZigBee
Model	LGHA-WNA1105	LGHA-ZNA1105
Frequency Range	2412 ~ 2462 MHz	2405 ~ 2475 MHz
RF Max Power	802.11b(22.88 dBm)/802.11g(21.65dBm)/ 802.11n(20.67dBm)	18.91dBm
Channel	11	15
Modulation type	CCK/DSSS/OFDM	DSSS

### - U.S. Regulatory Wireless Notice

This products emits radio frequency energy, but the radiated output power of this device is far below the FCC radio frequency exposure limits. Nevertheless, the device should be used in such a manner that the potential for human contact with the antenna during normal operation is minimized.

### - FCC WARNING:

This equipment may generate or use radio frequency energy. Changes or modifications to this equipment may cause harmful interference unless the modifications are expressly approved in the instruction manual. The user could lose the authority to operate this equipment if an unauthorized change or modification is made.

### NOTE

This device complies with part 15 of the FCC rules.

Operation is subject to the following two conditions :

- (1) This device may not cause harmful interference, and
- (2) This device must accept any interference received, including interference that may cause undesired operation.

This device complies with RSS-210 of the Industry Canada Rules.

Operation is subject to the following two conditions:

- (1) This device may not cause interference and
- (2) This device must accept any interference, including interference that may cause undesired operation of the device.

## Unpacking Your Refrigerator

### WARNING

- Use two or more people to move and install the refrigerator. Failure to do so can result in back or other injury.
- Your refrigerator is heavy. When moving the refrigerator for cleaning or service, be sure to protect the floor. Always pull the refrigerator straight out when moving it. Do not wiggle or walk the refrigerator when trying to move it, as floor damage could occur.
- Keep flammable materials and vapors, such as gasoline, away from the refrigerator. Failure to do so can result in fire, explosion, or death.

Remove tape and any temporary labels from your refrigerator before using. Do not remove any warning-type labels, the model and serial number label, or the Tech Sheet that is located under the front of the refrigerator.

To remove any remaining tape or glue, rub the area briskly with your thumb. Tape or glue residue can also be easily removed by rubbing a small amount of liquid dish soap over the adhesive with your fingers. Wipe with warm water and dry.

Do not use sharp instruments, rubbing alcohol, flammable fluids, or abrasive cleaners to remove tape or glue. These products can damage the surface of your refrigerator.

Refrigerator shelves are installed in the shipping position. Please reinstall shelves according to your individual storage needs.

## Choosing the Proper Location

- Select a place where a water supply can be easily connected for the automatic icemaker.

### NOTE

The water pressure must be between 20 and 120 psi on models without a water filter and between 40 and 120 psi on models with a water filter.

- The refrigerator should always be plugged into its own individual properly grounded electrical outlet rated for 115 Volts, 60 Hz, AC only, and fused at 15 or 20 amperes. This provides the best performance and also prevents overloading house wiring circuits which could cause a fire hazard from overheated wires. It is recommended that a separate circuit serving only this appliance be provided.

### WARNING

To reduce the risk of electric shock, do not install the refrigerator in a wet or damp area.

## Flooring

To avoid noise and vibration, the unit must be leveled and installed on a solidly constructed floor. If required, adjust the leveling legs to compensate for unevenness of the floor. The front should be slightly higher than the rear to aid in door closing. Leveling legs can be turned easily by tipping the cabinet slightly. Turn the leveling legs to the left to raise the unit or to the right to lower it. (See Leveling and door Alignment.)

### NOTE

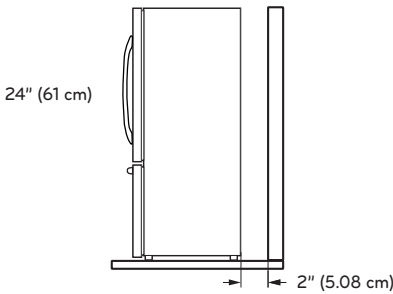
Installing on carpeting, soft tile surfaces, a platform or weakly supported structure is not recommended.

### Ambient Temperature

Install this appliance in an area where the temperature is between 55°F (13°C) and 110°F (43°C). If the temperature around the appliance is too low or high, cooling ability may be adversely affected.

### Measuring the Clearances

Too small of a distance from adjacent items may result in lowered freezing capability and increased electricity consumption charges. Allow at least 24 inches (61 cm) in front of the refrigerator to open the doors, and at least 2 inches (5.08 cm) between the back of the refrigerator and the wall.



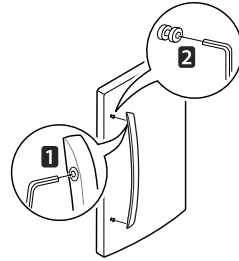
### Removing/Assembling the Refrigerator Door Handles

#### ! NOTE

Removing the doors is always recommended when it is necessary to move the refrigerator through a narrow opening. If it is necessary to remove the handles, follow the directions below.

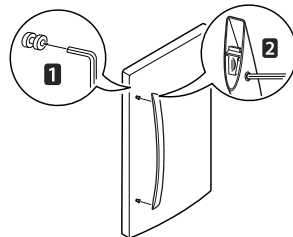
#### Removing the Handles

- 1 Loosen the set screws **1** with a  $\frac{3}{32}$  in. Allen wrench and remove the handle.
- 2 Loosen the mounting fasteners **2** that connect to the refrigerator door and handle using a  $\frac{1}{4}$  in. Allen wrench, remove the mounting fasteners.



#### Assembling the Handles

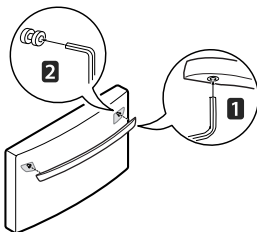
- 1 Assemble the mounting fasteners **1** at both ends of the handle using a  $\frac{1}{4}$  in. Allen wrench.
- 2 Place the handle on the door by fitting the handle footprints over the mounting fasteners and tightening the set screws **2** with a  $\frac{3}{32}$  in. Allen wrench.



## Removing/Assembling the Freezer Drawer Handle

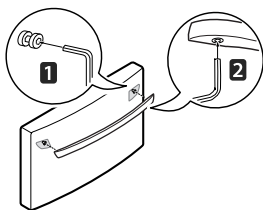
### Removing the Handles

- 1 Loosen the set screws **1** located on the lower side of the handle with a  $\frac{1}{8}$  in. Allen wrench and remove the handle.
- 2 Loosen the mounting fasteners **2** that connect to the freezer drawer and handle using a  $\frac{1}{4}$  in. Allen wrench, and remove the mounting fasteners.



### Assembling the Handles

- 1 Assemble the mounting fasteners **1** at both ends of the handle using a  $\frac{1}{4}$  in. Allen wrench.
- 2 Place the handle on the door by fitting the handle footprints over the mounting fasteners and tightening the set screws **2** with a  $\frac{1}{8}$  in. Allen wrench.



### ! WARNING

When the customer takes apart the handle or assemble it from a refrigerator, please be cautious of following things.

- Hold the handle with your own hand to make sure not to drop the handle to the floor or instep while taking apart the handle from a refrigerator.
- Do not swing the handle towards people or animals after taking apart the handle.
- Insert the bracket hole of the handle into the stopper bolt of the door exactly, and then assemble the set screws to fix the handle.
- Check if there's any gap between the door and handle after fixing the handle.

## Removing/Assembling the Doors and Drawers

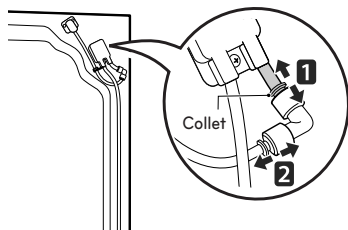
Removing the doors is always recommended when it is necessary to move the refrigerator through a narrow opening.

### ! WARNING

- If your entrance door is too narrow for the refrigerator to pass through, remove the refrigerator doors and move the refrigerator sideways through the doorway.
- Use two or more people to remove and install the refrigerator doors. Failure to do so can result in back or other injury.
- Disconnect the electrical supply to the refrigerator before installing. Failure to do so could result in serious injury or death.
- Do not put hands, feet or other objects into the air vents or bottom of the refrigerator. You may be injured or receive an electrical shock.
- Be careful when handling the hinge and stopper. It may result in injury.
- Remove food and bins from the doors and drawers before detaching.

### Removing the Left Refrigerator Door

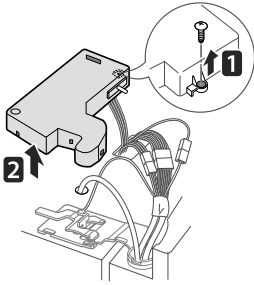
- 1 The water supply is connected to the upper right part of the rear surface of the refrigerator. Remove the ring in the joint area. Hold the water supply connection and gently push the Collet to detach the water supply line as shown in **1** and **2**.



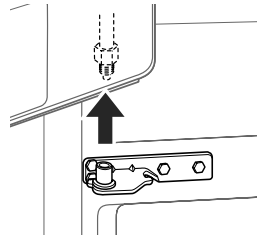
### ! NOTE

Detachment of the water supply line is applicable only when detaching the left refrigerator door.

- 2 Remove the **1** screw from the hinge cover at the top of the refrigerator. Lift the hook (not visible), located at the bottom of the front side of the cover **2** with a flat-head screwdriver.



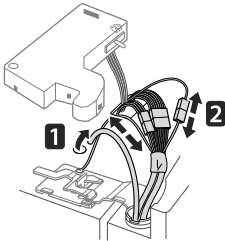
- 5 Lift the door from the middle hinge pin and remove the door.



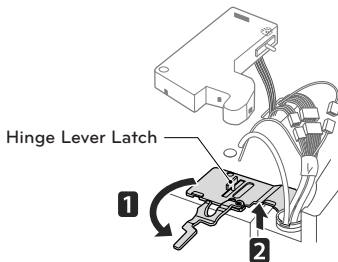
**CAUTION**

Place the door, inside facing up, on a non-scratching surface.

- 3 Remove the cover and pull out the tube **1**. Disconnect all wire harnesses **2**.



- 4 Rotate the hinge lever counterclockwise **1**. Lift the top hinge **2** free of the hinge lever latch.

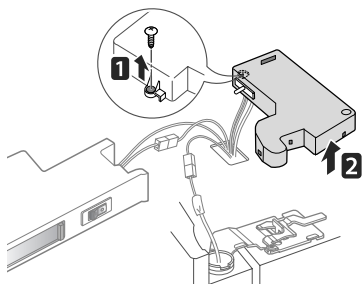


**CAUTION**

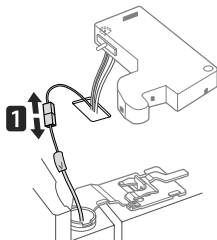
When lifting the hinge free of the latch, be careful that the door does not fall forward.

## Removing the Right Refrigerator Door

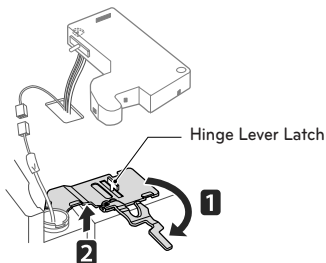
- 1 Remove the top hinge cover screw **1**. Lift the hook (not visible), located at the bottom of the front side of the cover **2**, with a flat-head screwdriver.



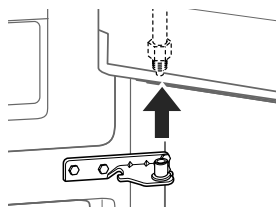
- 2 Detach the wire harness **1**.



- 3 Rotate the hinge lever **1** clockwise. Lift the top hinge **2** free of the hinge lever latch.



- 4 Lift the door from the middle hinge pin and remove the door.



### CAUTION

Place the door on the floor, inside facing up, on a non-scratching surface.

### CAUTION

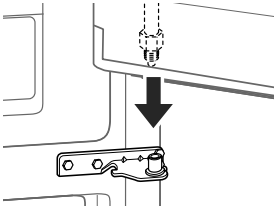
When lifting the hinge free of the hinge lever latch, be careful that the door does not fall forward.



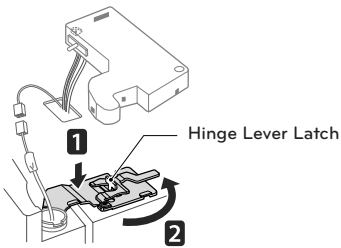
## Assembling the Right Refrigerator Door

Install the right-side door first.

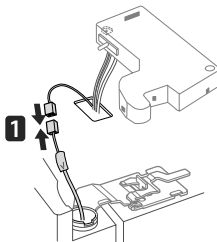
- 1 Make sure that the plastic sleeve is inserted in the bottom of the door. Lower the door onto the middle hinge pin as shown in the figure.



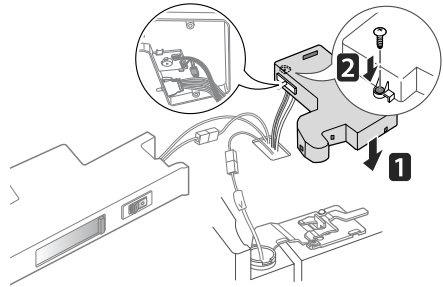
- 2 Fit the hinge **1** over the hinge lever latch and slot it into place. Rotate the lever **2** counterclockwise to secure the hinge.



- 3 Connect the wire harness **1**.



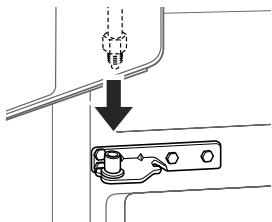
- 4 Make sure that the door-switch located inside the cover is tightly connected. Position the cover in its place. Insert and tighten the cover screw **2**.



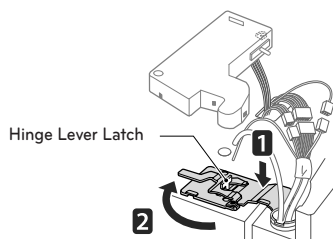
## Assembling the Left Refrigerator Door

Install the left refrigerator door after the right door is installed.

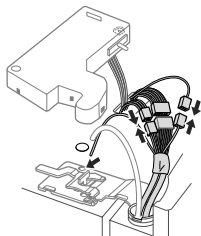
- 1 Make sure that the plastic sleeve is inserted in the bottom of the door. Install the refrigerator door onto the middle hinge.



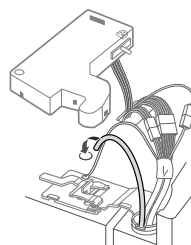
- 2 Fit the hinge **1** over the hinge lever latch and slot it into place. Rotate the lever clockwise **2** and fasten the hinge.



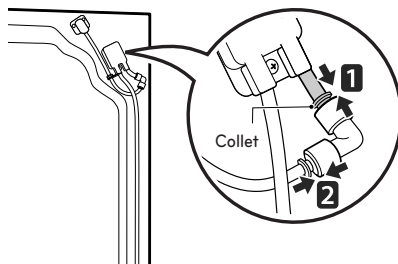
- 3 Connect all the wire harnesses.



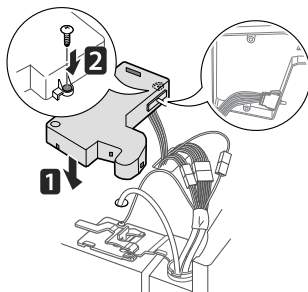
- 4 Push the water supply tube into the hole on the top case and pull it through the backplate.



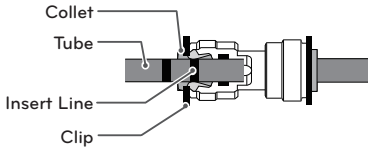
- 5 Hold the water supply connection and gently push in the collet to connect the water supply line as shown in **1** and **2**. Insert the tube at least  $\frac{5}{8}$  inch (15 mm) into the connector. Assemble the clip to the joint part for fastening.



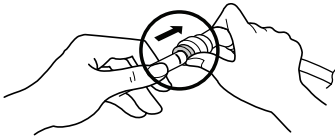
- 6 Make sure that the door-switch located inside the cover is tightly connected. Place the cover **1** in its position and tighten the cover screw **2**.



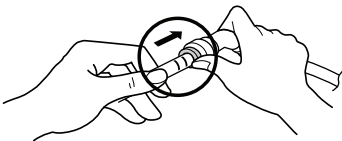
**NOTE**



- 1) Gently press the Collet and insert the tube until only one line shows on the tube.



(Correct)



(Incorrect)

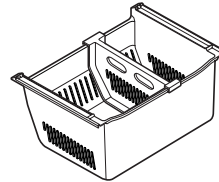
- 2) Pull the tube to make sure that the tube is tightly fastened and then insert the clip.

**Removing the Freezer Drawers**

The top, middle and bottom drawers are all removed in the same way. In the following figures, the Pullout Drawer located above the freezer drawer is not shown for clarity.

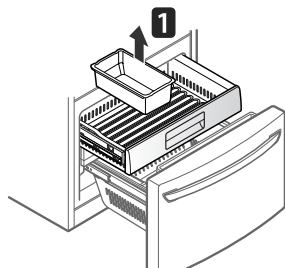
**CAUTION**

- Use two or more people to remove and install the freezer drawer. Failure to do so can result in back or other injury.
- Do not hold the handle when removing or replacing the drawer. The handle may come off and it could cause personal injury.
- Be careful of sharp hinges on both sides of the drawer.
- When you lay the drawer down, be careful not to damage the floor.
- Do not sit or stand on the freezer drawer.
- To prevent accidents, keep children and pets away from the drawer. Do not leave the drawer open. If the Durabase® storage bin is removed from the freezer drawer, there is sufficient space inside for a small child or a pet to get into.

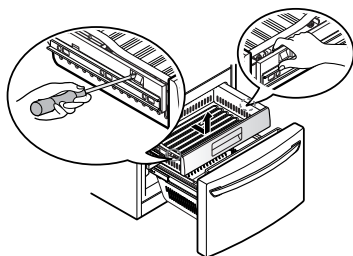


(Durabase®)

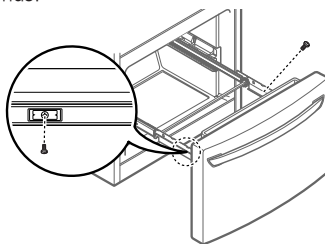
- 1 Pull the drawer open to full extension.
- 2 Gently lift and pull out the ice bin. (Images **1** in the figure below may differ from the actual drawers of the refrigerator.)



On the left rail, use a flat blade screwdriver to push in on the tab to release the drawer from the rail, as shown below. Once the left side is loose, push the tab on the right side with your finger to release the drawer. Lift the front of the drawer up, then pull it straight out.



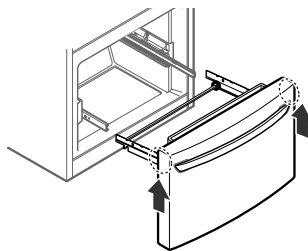
- 3 Remove the screws from the rails at both ends.



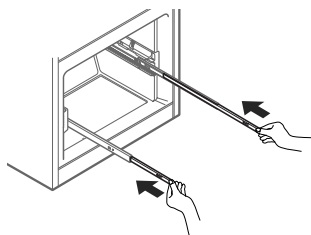
- 4 With both hands, grip both sides of the drawer and pull it up to remove it from the rails.

**CAUTION**

Do not hold the handle when removing or replacing the drawer. The handle may come off and it could cause personal injury.



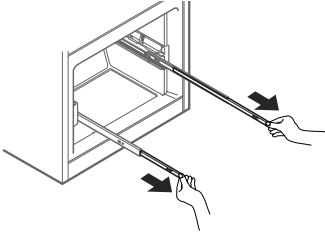
- 5 With both hands, hold each rail and push it in to allow both rails to slide in simultaneously.



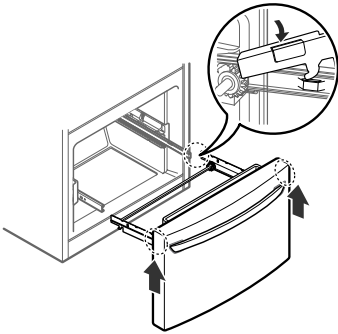
## Assembling the Freezer Drawers

The top, middle and bottom drawers are all assembled in the same way.

- 1 With both hands, pull out each rail simultaneously until both rails are fully extended.



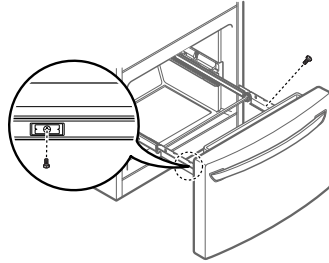
- 2 Grasp the drawer on each side and hook the drawer supports into the rail tabs located on both sides.



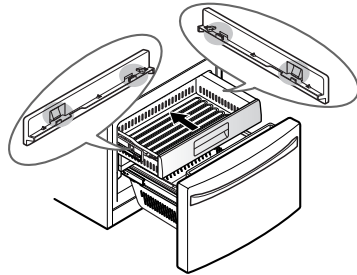
### CAUTION

Do not hold the handle when removing or replacing the drawer. The handle may come off and it could cause personal injury.

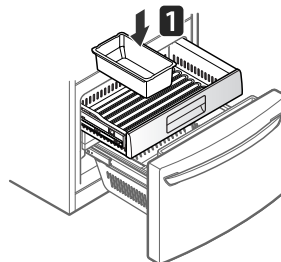
- 3 Lower the door into final position and tighten the screws located on both sides.



- 4 Insert drawer into the frame, and push drawer back into place until you hear a click.



- 5 Insert the lower basket in the rail assembly. (Images **1** in the figure below may differ from the actual drawers of the refrigerator.)



## Connecting the Water Line

### Before You Begin

This water line installation is not covered by the refrigerator warranty. Follow these instructions carefully to minimize the risk of expensive water damage.

Water hammer (water banging in the pipes) in house plumbing can cause damage to refrigerator parts and can lead to water leakage or flooding. Call a qualified plumber to correct water hammer before installing the water supply line to the refrigerator.



#### CAUTION

To prevent burns and product damage, only connect the refrigerator water line to a cold water supply.

If you use your refrigerator before connecting the water line, make sure the icemaker power switch is in the OFF (O) position.



#### CAUTION

Do not install the icemaker tubing in areas where temperatures fall below freezing.

### Water Pressure

A cold water supply. The water pressure must be between 20 and 120 psi on models without a water filter and between 40 and 120 psi on models with a water filter.

If a reverse osmosis water filtration system is connected to your cold water supply, this water line installation is not covered by the refrigerator warranty. Follow the following instructions carefully to minimize the risk of expensive water damage.

If a reverse osmosis water filtration system is connected to your cold water supply, the water pressure to the reverse osmosis system needs to be a minimum of 40 to 60 psi (2.8 kgf/cm<sup>2</sup> ~ 4.2 kgf/cm<sup>2</sup>, less than 2.0~3.0 sec. to fill a cup of 7 oz capacity).



#### CAUTION

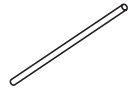
Wear eye protection during installation to prevent injury.

If the water pressure from the reverse osmosis system is less than 21 psi or 1.5 kgf/cm<sup>2</sup> (takes more than 4.0 sec to fill a cup of 7 oz capacity):

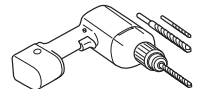
- Check to see if the sediment filter in the reverse osmosis system is blocked. Replace the filter if necessary.
- Allow the storage tank on the reverse usage.
- If the issue concerning water pressure from reverse osmosis remains, call a licensed, qualified plumber.
- All installations must be in accordance with local plumbing code requirements.

### What You Will Need

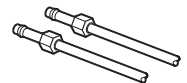
- **Copper Tubing**, ¼ in. outer diameter, to connect the refrigerator to the water supply. Be sure both ends of the tubing are cut square.
- To determine how much tubing you need: measure the distance from the water valve on the back of the refrigerator to the water supply pipe. Then, add 8 feet (2.4 m). Be sure there is sufficient extra tubing (about 8 feet [2.4 m] coiled into 3 turns of about 10 in. [25 cm] diameter) to allow the refrigerator to move out from the wall after installation.



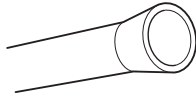
- **Power drill.**
- **½ in. or adjustable wrench.**
- **Flat blade and Phillips head screwdrivers.**



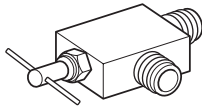
- **Two ¼ in. outer diameter compression nuts and 2 ferrules (sleeves)** to connect the copper tubing to the shutoff valve and the refrigerator water valve.



- If your existing copper water line has a flared fitting at the end, you will need an **adapter** (available at plumbing supply stores) to connect the water line to the refrigerator OR you can cut off the flared fitting with a tube cutter and then use a compression fitting.



- **Shutoff valve to connect to the cold water line.** The shutoff valve should have a water inlet with a minimum inside diameter of 5/32 in. at the point of connection to the COLD WATER LINE. Saddle-type shutoff valves are included in many water supply kits. Before purchasing, make sure a saddle-type valve complies with your local plumbing codes.



**NOTE**

A self piercing saddle type water valve should not be used.

**Water Line Installation Instructions**

**WARNING**

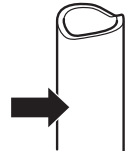
When using any electrical device (such as a power drill) during installation, be sure the device is battery powered, double insulated or grounded in a manner that will prevent the hazard of electric shock.

Install the shutoff valve on the nearest frequently used drinking water line.

- 1 SHUT OFF THE MAIN WATER SUPPLY  
Turn on the nearest faucet to relieve the pressure on the line.

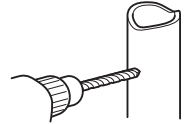
- 2 CHOOSE THE VALVE LOCATION

Choose a location for the valve that is easily accessible. It is best to connect into the side of a vertical water pipe. When it is necessary to connect into a horizontal water pipe, make the connection to the top or side, rather than at the bottom, to avoid drawing off any sediment from the water pipe.



- 3 DRILL THE HOLE FOR THE VALVE

Drill a 1/4 in. hole in the water pipe using a sharp bit. Remove any burrs resulting from drilling the hole in the pipe. Be careful not to allow water to drain into the drill. Failure to drill a 1/4 in. hole may result in reduced ice production or smaller cubes.

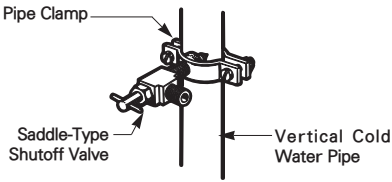


**NOTE**

The hookup line cannot be white, plastic tubing. Licensed plumbers must use only copper tubing NDA tubing #49595 or 49599 or Cross Link Polyethylene (PEX) tubing.

4 FASTEN THE SHUTOFF VALVE

Fasten the shutoff valve to the cold water pipe with the pipe clamp.

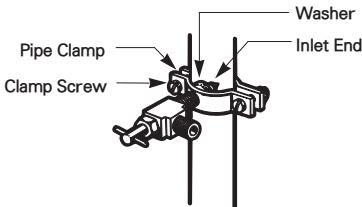


**NOTE**  
 Commonwealth of Massachusetts Plumbing Codes 248CMR shall be adhered to. Saddle valves are illegal and use is not permitted in Massachusetts. Consult with your licensed plumber.

5 TIGHTEN THE PIPE CLAMP

Tighten the clamp screws until the sealing washer begins to swell.

**NOTE: Do not overtighten clamp or you may crush the tubing.**



6 ROUTE THE TUBING

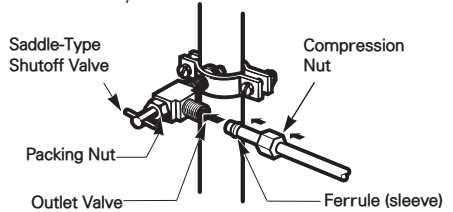
Route the tubing between the cold water line and the refrigerator.

Route the tubing through a hole drilled in the wall or floor (behind the refrigerator or adjacent base cabinet) as close to the wall as possible.

**NOTE**  
 Be sure there is sufficient extra tubing (about 8 feet coiled into 3 turns of about 10 in. diameter) to allow the refrigerator to move out from the wall after installation.

7 CONNECT THE TUBING TO THE VALVE

Place the compression nut and ferrule (sleeve) for copper tubing onto the end of the tubing and connect it to the shutoff valve. Make sure the tubing is fully inserted into the valve. Tighten the compression nut securely.



8 FLUSH OUT THE TUBING

Turn the main water supply on and flush out the tubing until the water is clear.

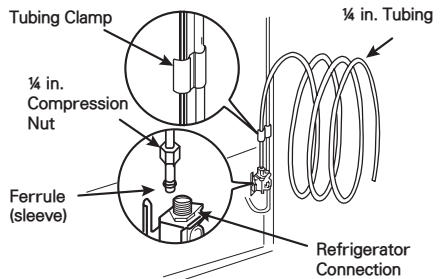
Shut the water off at the water valve after about one quart of water has been flushed through the tubing.



9 CONNECT THE TUBING TO THE REFRIGERATOR

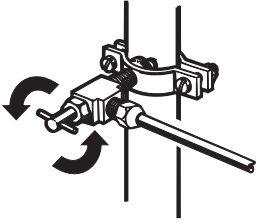
**NOTE: Before making the connection to the refrigerator, be sure that the refrigerator power cord is not plugged into the wall outlet.**

- a. Remove the plastic flexible cap from the water valve.
- b. Place the compression nut and ferrule (sleeve) onto the end of the tubing as shown.
- c. Insert the end of the copper tubing into the connection as far as possible. While holding the tubing, tighten the fitting.





- 10 TURN THE WATER ON AT THE SHUTOFF VALVE  
VALVE  
Tighten any connections that leak.



**CAUTION**

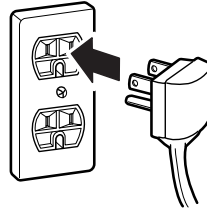
Check to see if leaks occur at the water line connections.

- 11 PLUG IN THE REFRIGERATOR

Arrange the coil of tubing so that it does not vibrate against the back of the refrigerator or against the wall. Push the refrigerator back to the wall.

**Turning on the Power**

- 1 Plug in the refrigerator.



**CAUTION**

- Connect to a rated power outlet.
- Have a certified electrician check the wall outlet and wiring for proper grounding.
- Do not damage or cut off the ground terminal of the power plug.

- 12 START THE ICEMAKER

Set the icemaker power switch to the **ON** position.

The icemaker will not begin to operate until it reaches its operating temperature of 15°F (-9°C) or below. It will then begin operation automatically if the icemaker power switch is in the **ON (I)** position.

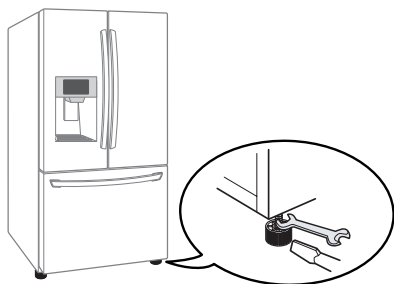
## Leveling and Door Alignment

### Leveling

After installing, plug the refrigerator's power cord into a 3-prong grounded outlet and push the refrigerator into the final position.

Your refrigerator has two front leveling legs—one on the right and one on the left. Adjust the legs to alter the tilt from front-to-back or side-to-side. If your refrigerator seems unsteady, or you want the doors to close more easily, adjust the refrigerator's tilt using the instructions below:

- 1 Turn the leveling leg to the left to raise that side of the refrigerator or to the right to lower it. It may take several turns of the leveling leg to adjust the tilt of the refrigerator.



#### NOTE

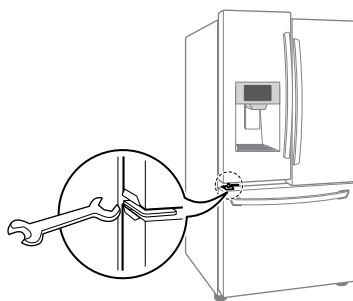
A flare nut wrench works best, but an open-end wrench will suffice.  
Do not over-tighten.

- 2 Open both doors again and check to make sure that they close easily. If the doors do not close easily, tilt the refrigerator slightly more to the rear by turning both leveling legs to the left. It may take several more turns, and you should turn both leveling legs the same amount.

### Door Alignment

Both the left and right refrigerator doors have an adjustable nut, located on the bottom hinge, to raise and lower them to align properly. If the space between your doors is uneven, follow the instructions below to align the doors evenly:

Use the wrench (included with the Owner's Manual) to turn the nut in the door hinge to adjust the height. To the right to raise or to the left to lower the height.



# HOW TO USE

## Before use



### Clean the refrigerator.

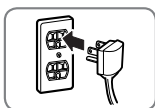
Clean your refrigerator thoroughly and wipe off all dust that accumulated during shipping.

#### ⚠ CAUTION

- Do not scratch the refrigerator with a sharp object or use a detergent that contains alcohol, a flammable liquid or an abrasive when removing any tape or adhesive from the refrigerator.
- Do not peel off the model or serial number label or the technical information on the rear surface of the refrigerator.

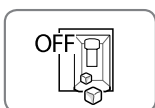
#### ⚠ NOTE

Remove adhesive residue by wiping it off with your thumb or dish detergent.



### Connect the power supply.

Check if the power supply is connected before use.  
Read the "Turning On The Power" section.



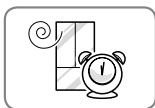
### Turn off the icemaker if the refrigerator is not yet connected to the water supply.

Turn off the automatic icemaker and then plug the power plug of the refrigerator into the grounded electric outlet.

\* This is applicable only to certain models.

#### ⚠ CAUTION

Running the automatic icemaker before connecting it to the water supply may cause the refrigerator to malfunction.

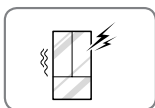


### Wait for the refrigerator to cool.

Allow your refrigerator to run for at least two to three hours before putting food in it. Check the flow of cold air in the freezer compartment to ensure proper cooling.

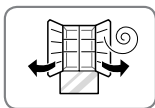
#### ⚠ CAUTION

Putting food in the refrigerator before it has cooled could cause the food to spoil, or a bad odor could remain inside the refrigerator.



### The refrigerator makes a loud noise after initial operation.

This is normal. The loudness will decrease as the temperature lowers.

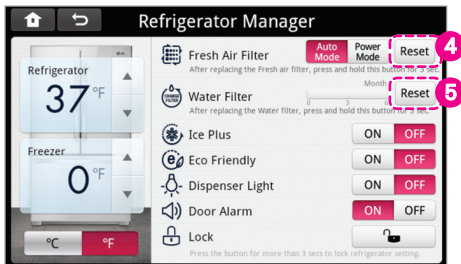


### Open refrigerator doors and freezer drawers to ventilate the interior.

The inside of the refrigerator may smell like plastic at first. Remove any adhesive tape from inside the refrigerator and open the refrigerator doors and the freezer drawers for ventilation.

## Control Panel

\* Depending on the model, some of the following functions may not be available.



### Refrigerator Temperature Refrigerator 37°F

Indicates the set temperature of the refrigerator compartment in Celsius (°C) or Fahrenheit (°F). If you want to set the temperature, touch the up and down arrow button.

### Freezer Temperature Freezer 0°F

Indicates the set temperature of the freezer compartment in Celsius (°C) or Fahrenheit (°F).

If you want to change the temperature mode from °F to °C (or vice versa), click on the desired type. (1)

The temperature indication on the display window switches between Celsius and Fahrenheit.

**NOTE**

The displayed temperature is the target temperature, and not the actual temperature of the refrigerator. The actual refrigerator temperature depends on the food inside the refrigerator.

### Fresh Air Filter

The Fresh Air Filter helps remove odors from the refrigerator. The Fresh Air Filter has two settings, Auto and Power(PWR). In Auto mode, the Fresh Air Filter will cycle on and off in increments of ten minutes on and one hundred ten minutes off. If set to the Power(PWR) mode, the Fresh Air Filter will stay on continuously for four hours, cycling on and off in increments of ten minutes on and five minutes off. After four hours, the Fresh Air Filter will switch back to Auto mode.

### Change Filter

- Replace Filter notification.
- 2 'Replacement' is shown on the screen.
- 4 Reset Button will activate.
- After replacing the filter, press and hold the 'Reset' button for approximately 3 seconds to complete replacement of the filter. It is recommended to change the air filter approximately every six months.

## Ice Plus

This function increases both ice making and freezing capabilities.

- When you touch the 'ON' button, this function will automatically shut off after 24 hours.
- You can stop this function manually by touching the 'OFF' button.

## Eco Friendly

The Eco Friendly function disables the mullion heater located on the refrigerator door in order to conserve electricity. Touch the On or Off button to turn the Eco Friendly feature either on or off.



### NOTE

Discontinue using the Eco Friendly function if excessive moisture begins to collect on the door mullion.

## Dispenser Light

When you touch the 'ON' button, the dispenser light will turn on.

## Change Water Filter

- Replace Filter notification.
  - 3 'Replacement' is shown on the screen.
  - 6 Reset Button will activate.
- After replacing the filter, press and hold the 'Reset' button for approximately 3 seconds to complete replacement of the filter. It is recommended to change the air filter approximately every six months.

## Door Alarm

- When power is connected to the refrigerator, the door alarm is initially set to ON. Touch the OFF button to deactivate the door alarm.
- When either the refrigerator or the freezer door is left open for more than 60 seconds, the alarm tone will sound to let you know that the door is open.
- When you close the door, the door alarm will turn off.

## Lock

**If you enable the Lock to prevent a mistake, you can not touch any button except unlock button.**

- Activate the Lock to disable every function on the display except for the Lock button.
- To activate the Lock, press and hold the Lock button for approximately three seconds. The Lock icon will display and the Lock function is now enabled.
- When the Lock function is activated, no other buttons will work. The dispenser pad is also deactivated.
- To disable the Lock function, press and hold the Lock button for approximately three seconds.

## Power Saving Mode

- When the refrigerator is in the **Power Saving Mode**, the display will remain off until a door is opened or a button is pressed. Once on, the display will remain on for 1 minute and photo slide show. Photo slide show time can be set in Settings > Screen Saver.

## In-Door Ice Bin

\* Depending on the model, some of the following functions may not be available.

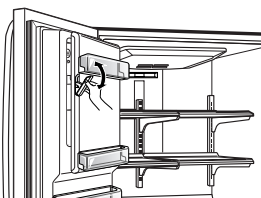


### CAUTION

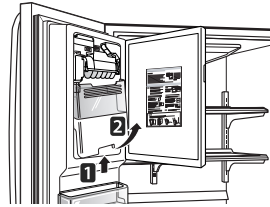
- Keep hands and tools out of the ice compartment door and dispenser chute. Failure to do so may result in damage or personal injury.
- The icemaker will stop producing ice when the in-door ice bin is full. If you need more ice, empty the ice bin into the extra ice bin in the freezer compartment. During use, the ice can become uneven causing the icemaker to misread the amount of ice cubes and stop producing ice. Shaking the ice bin to level the ice within it can reduce this problem.
- Storing cans or other items in the ice bin will damage the icemaker.
- Keep the ice compartment door closed tightly. If the ice compartment door is not closed tightly, the cold air in the ice bin will freeze food in the refrigerator compartment. This could also cause the icemaker to stop producing ice.
- If the ON/OFF switch on the icemaker is set to OFF for an extended period of time, the ice compartment will gradually warm up to the temperature of the refrigerator compartment. To prevent ice cubes from melting and leaking from the dispenser, ALWAYS empty the ice bin when the icemaker is set to OFF for more than a few hours.

## Detaching the In-Door Ice Bin

- 1 Gently pull the handle to open the ice compartment.

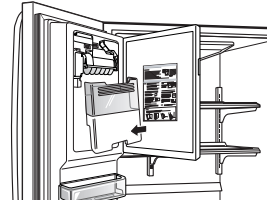


- 2 To remove the in-door ice bin, grip the front handle, slightly lift the lower part, and slowly pull out the bin as shown.

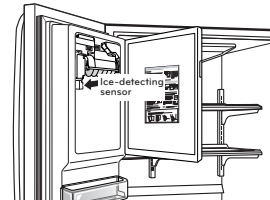


## Assembling the In-Door Ice Bin

- 1 Carefully insert the in-door ice bin while slightly slanting it to avoid contact with the icemaker.



- 2 Avoid touching the ice-detecting sensor when replacing the ice bin. See the label on the ice compartment door for details.



### CAUTION

When handling the ice bin, keep hands away from the icemaker tray area to avoid personal injury.

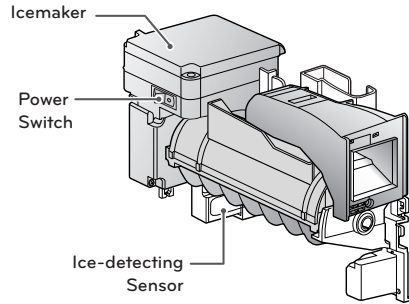


## Automatic Icemaker

\* Depending on the model, some of the following functions may not be available.

Ice is made in the automatic icemaker and sent to the dispenser. The icemaker will produce 70~210 cubes in a 24-hour period, depending on freezer compartment temperature, room temperature, number of door openings and other operating conditions.

- It takes about 12 to 24 hours for a newly installed refrigerator to begin making ice. Wait 72 hours for full ice production to occur.
- Ice making stops when the in-door ice bin is full. When full, the in-door ice bin holds approximately 6 to 8 (12-16 oz) glasses of ice.
- The water pressure must be between 20 and 120 psi on models without a water filter and between 40 and 120 psi on models with a water filter to produce the normal amount and size of ice cubes.
- Foreign substances or frost on the ice-detecting sensor can interrupt ice production. Make sure the sensor area is clean at all times for proper operation.



### Turning the Automatic Icemaker ON or OFF

To turn off the automatic icemaker, set the icemaker switch to **OFF (O)**. To turn on the automatic icemaker, set the switch to **ON (I)**.

## Automatic Icemaker (continued)



### CAUTION

- The first ice and water dispensed may include particles or odor from the water supply line or the water tank.
- Throw away the first few batches of ice. This is also necessary if the refrigerator has not been used for a long time.
- Never store beverage cans or other items in the ice bin for the purpose of rapid cooling. Doing so may damage the icemaker or the containers may burst.
- If discolored ice is dispensed, check the water filter and water supply. If the problem continues, contact a Sears or other qualified service center. Do not use the ice or water until the problem is corrected.
- Keep children away from the dispenser. Children may play with or damage the controls.
- The ice passage may become blocked with frost if only crushed ice is used. Remove the frost that accumulates by removing the ice bin and clearing the passage with a rubber spatula. Dispensing cubed ice can also help prevent frost buildup.
- Never use thin crystal glass or crockery to collect ice. Such containers may chip or break resulting in glass fragments in the ice.
- Dispense ice into a glass before filling it with water or other beverages. Splashing may occur if ice is dispensed into a glass that already contains liquid.
- Never use a glass that is exceptionally narrow or deep. Ice may jam in the ice passage and refrigerator performance may be affected.
- Keep the glass at a proper distance from the ice outlet. A glass held too close to the outlet may prevent ice from dispensing.
- To avoid personal injury, keep hands out of the ice door and passage.
- Never remove the dispenser cover.
- If ice or water dispenses unexpectedly, turn off the water supply and contact a qualified service center.

## When You Should Turn the Icemaker OFF

- When the water supply will be shut off for several hours.
- When the ice bin is removed for more than one or two minutes.
- When the refrigerator will not be used for several days.



### NOTE

The ice bin should be emptied when the icemaker on/off switch is turned to the OFF position.

## Normal Sounds You May Hear

- The icemaker water valve will buzz as the icemaker fills with water. If the power switch is in the ON (I) position, it will buzz even if it has not yet been hooked up to water. To stop the buzzing, move the power switch to OFF (O).



### NOTE

Keeping the power switch in the ON (I) position before the water line is connected can damage the icemaker.

- You will hear the sound of cubes dropping into the bin and water running in the pipes as the icemaker refills.

## Preparing For Vacation

Set the icemaker power switch to OFF (O) and shut off the water supply to the refrigerator.



### NOTE

The ice bin should be emptied anytime the icemaker on/off switch is turned to the OFF (O) position.

If the ambient temperature will drop below freezing, have a qualified technician drain the water supply system to prevent serious property damage due to flooding caused by ruptured water lines or connections.



## Ice and Water Dispenser

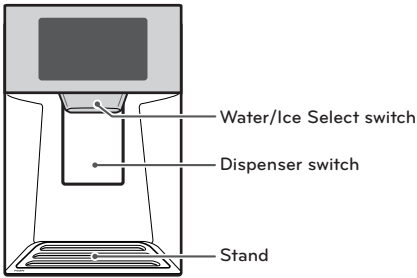
\* Depending on the model, some of the following functions may not be available.



### CAUTION

Keep children away from the dispenser. Children may play with or damage the controls.

## Dispenser



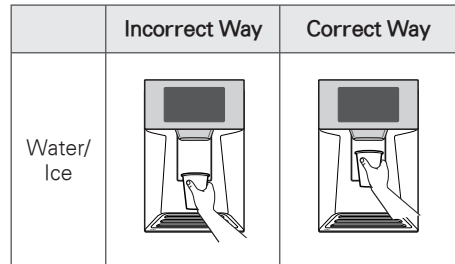
## Using the Dispenser

- To dispense cold water, set the 'water' type by pressing the Water/Ice Select switch and push on the Dispenser switch with a glass.
- To dispense cubed ice, set the 'cubed' type by pressing the Water/Ice Select switch and push on the Dispenser switch with a glass.
- To dispense crushed ice, set the 'crushed' type by pressing the Water/Ice Select switch and push on the Dispenser switch with a glass.



### NOTE

- If discolored ice is dispensed, check the water filter and water supply. If the problem continues, contact a qualified service center. Do not use the ice or water until the problem is corrected.
- The dispenser will not operate when either of the refrigerator doors are open.
- If dispensing water or ice into a container with a small opening, place it as close to the dispenser as possible.
- Some dripping may occur after dispensing. Hold your cup beneath the dispenser for a few seconds after dispensing to catch all of the drops.



### CAUTION

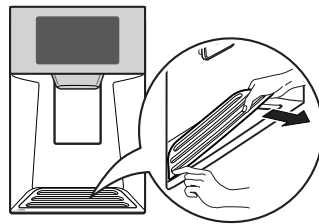
Throw away the first few batches of ice (about 24 cubes). This is also necessary if the refrigerator has not been used for a long time.

## Locking the Dispenser

Touch and hold the Lock button for 3 seconds to lock the dispenser and all the control display functions. Follow the same instructions to unlock.

## Cleaning the Dispenser Stand

- 1 Press down on either of the front corners to remove the stand.



- 2 Wipe out dirty areas with a clean cloth.

## Storing Food

### Food Preservation Location

Each compartment inside the refrigerator is designed to store different types of food. Store your food in the optimal space to enjoy the freshest taste.



#### Vegetable storage (Crisper)

Preserves vegetables and fruit.



#### Ice storage bin

If a large amount of ice is needed, transfer the ice in the in-door ice bin to the ice storage bin.



#### Durabase®

Largest storage space in the freezer.



#### Dairy bin



#### Adjustable refrigerator shelf

Adjustable shelves to meet your individual storage needs.



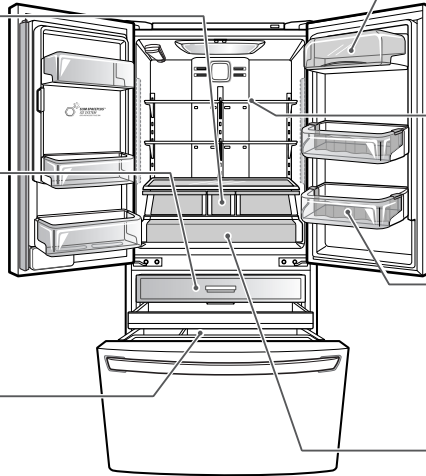
#### Modular door bin

Store drinks such as juice and soda, as well as seasonings, salad dressings and other food items.



#### Glide 'N' Serve

Provides storage space with a variable temperature control that keeps the compartment at a different temperature than the refrigerator. It is a convenient place to store sandwiches or meat to be cooked.



### CAUTION

- Do not store food with high moisture content towards the top of the refrigerator. The moisture could come in direct contact with the cold air and freeze.
- Wash food before storing it in the refrigerator. Vegetables and fruit should be washed, and food packaging should be wiped down to prevent adjacent foods from being contaminated.
- If the refrigerator is kept in a hot and humid place, frequent opening of the door or storing a lot of vegetables in the refrigerator may cause condensation to form. Wipe off the condensation with a clean cloth or a paper towel.
- If the refrigerator door or freezer drawer is opened or closed too often, warm air may penetrate the refrigerator and raise its temperature. It can also increase the cost of electricity.

### NOTE

- If you are leaving home for a short period of time, like a short vacation, the refrigerator should be left on. Refrigerated foods that are able to be frozen will stay preserved longer if stored in the freezer.
- If you are leaving the refrigerator turned off for an extended period of time, remove all food and unplug the power cord. Clean the interior, and leave the door open to prevent fungi from growing in the refrigerator.

## Food Storage Tips

\* The following tips may not be applicable depending on the model.

Wrap or store food in the refrigerator in airtight and moisture-proof material unless otherwise noted. This prevents food odor and taste transfer throughout the refrigerator. For dated products, check date code to ensure freshness.

Food	How to
<b>Butter or Margarine</b>	Keep opened butter in a covered dish or closed compartment. When storing an extra supply, wrap in freezer packaging and freeze.
<b>Cheese</b>	Store in the original wrapping until you are ready to use it. Once opened, rewrap tightly in plastic wrap or aluminum foil.
<b>Milk</b>	Wipe milk cartons. For best storage, place milk on interior shelf, not on door shelf.
<b>Eggs</b>	Store in original carton on interior shelf, not on door shelf.
<b>Fruit</b>	Do not wash or hull the fruit until it is ready to be used. Sort and keep fruit in its original container, in a crisper, or store in a completely closed paper bag on a refrigerator shelf.
<b>Leafy Vegetables</b>	Remove store wrapping and trim or tear off bruised and discolored areas. Wash in cold water and drain. Place in plastic bag or plastic container and store in crisper.
<b>Vegetables with skins (carrots, peppers)</b>	Place in plastic bags or plastic container and store in crisper.
<b>Fish</b>	Store fresh fish and shellfish in the freezer section if they are not being consumed the same day of purchase. It is recommended to consume fresh fish and shellfish the same day purchased.
<b>Leftovers</b>	Cover leftovers with plastic wrap, aluminum foil, or plastic containers with tight lids.

## Storing Frozen Food

### ! NOTE

Check a freezer guide or a reliable cookbook for further information about preparing food for freezing or food storage times.

## Freezing

Your freezer will not quick-freeze a large quantity of food. Do not put more unfrozen food into the freezer than will freeze within 24 hours (no more than 2 to 3 lbs. of food per cubic foot of freezer space). Leave enough space in the freezer for air to circulate around packages. Be careful to leave enough room at the front so the door can close tightly.

Storage times will vary according to the quality and type of food, the type of packaging or wrap used (how airtight and moisture-proof) and the storage temperature. Ice crystals inside a sealed package are normal. This simply means that moisture in the food and air inside the package have condensed, creating ice crystals.

### ! NOTE

Allow hot foods to cool at room temperature for 30 minutes, then package and freeze. Cooling hot foods before freezing saves energy.

## Storing Frozen Food (continued)

### Packaging

Successful freezing depends on correct packaging. When you close and seal the package, it must not allow air or moisture in or out. If it does, you could have food odor and taste transfer throughout the refrigerator and could also dry out frozen food.

### Packaging recommendations:

- Rigid plastic containers with tight-fitting lids
- Straight-sided canning/freezing jars
- Heavy-duty aluminum foil
- Plastic-coated paper
- Non-permeable plastic wraps
- Specified freezer-grade self-sealing plastic bags

Follow package or container instructions for proper freezing methods.

### Do not use

- Bread wrappers
- Non-polyethylene plastic containers
- Containers without tight lids
- Wax paper or wax-coated freezer wrap
- Thin, semi-permeable wrap

## Humidity Controlled Crisper and Glide'N'Serve

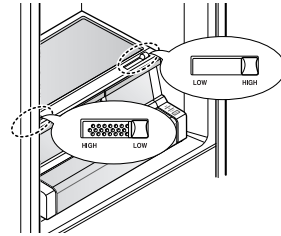
### Humidity Controlled Crisper

\* Depending on the model, some of the following functions may not be available.

The crispers provide fresher tasting fruit and vegetables by letting you easily control humidity inside the drawer.

You can control the amount of humidity in the moisture-sealed crispers by adjusting the control to any setting between **HIGH** and **LOW**.

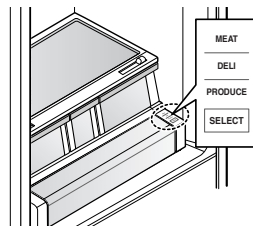
- **HIGH** keeps moist air in the crisper for best storage of fresh, leafy vegetables.
- **LOW** lets moist air out of the crisper for best storage of fruit.



### Glide'N'Serve

The Glide'N'Serve provides storage space with a variable temperature control that can keep the compartment at a slightly different temperature than the refrigerator section. This drawer can be used for large party trays, deli items and beverages. (This drawer should not be used for vegetables that require high humidity.)

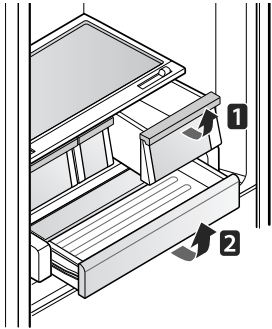
Press the **Select** button to choose between Meat (Coldest), Deli (Colder) and Produce (Cold).



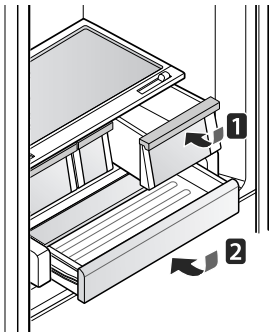
## Detaching and Assembling the Storage Bins

### Glide'N'Serve and Humidity Controlled Crisper

To remove the Humidity Controlled Crisper and the Glide'N'Serve, pull out the Crisper **1** and Glide'N'Serve **2** to full extension, lift the front up, and pull straight out.



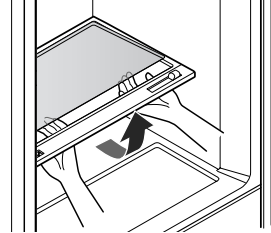
To install, slightly tilt up the front, insert the drawer into the frame and push it back into place.



### To Remove the Glass

(Pantry drawer not shown for clarity)

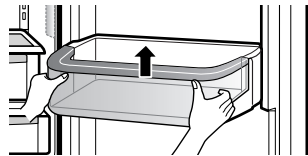
Lift up the glass under the crisper cover, and pull up and out.



### Door Bins

The door bins are removable for easy cleaning and adjustment.

- 1 To remove the bin, simply lift the bin up and pull straight out.
- 2 To replace the bin, slide it in above the desired support and push down until it snaps into place.



#### NOTE

Some bins may vary in appearance and will only fit in one location.

#### CAUTION

- Do not apply excessive force while detaching or assembling the storage bins.
- Do not use the dishwasher to clean the storage bins and shelves.
- Regularly detach and wash the storage bins and shelves; they can become easily contaminated by the food.

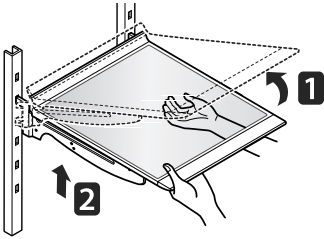
## Adjusting the Refrigerator Shelves

The shelves in your refrigerator are adjustable to meet your individual storage needs. Your model may have glass or wire shelves.

Adjusting the shelves to fit different heights of items will make finding the exact item you want easier. Doing so will also reduce the amount of time the refrigerator door is open which will save energy.

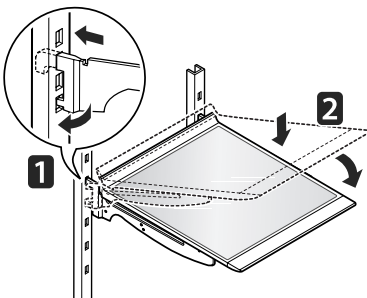
### Detaching the Shelf

Tilt up the front of the shelf and lift it straight up. Pull the shelf out.



### Assembling the Shelf

Tilt the front of the shelf up and guide the shelf hooks into the slots at a desired height. Then, lower the front of the shelf so that the hooks drop into the slots.

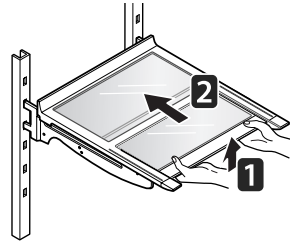


### CAUTION

Make sure that shelves are level from one side to the other. Failure to do so may result in the shelf falling or spilling food.

## Using the Folding Shelf

You can store taller items, such as a gallon container or bottles, by simply pushing the front half of the shelf underneath the back half of the shelf. Pull the front of the shelf toward you to return to a full shelf.



### CAUTION

- Do not clean glass shelves with warm water while they are cold. Shelves may break if exposed to sudden temperature changes or impact.
- Glass shelves are heavy. Use special care when removing them.

# SMART REFRIGERATOR DISPLAY SCREEN

## Before Use

### 1. Smart Refrigerator Display Dcreen

Utilize the many new features, such as Food Manager, Note Pad and Weather application, on the LCD display.

- Display screen buttons are touch activated.
- The touch screen will only respond to the human touch. Gloves, pens or other objects will not work with the touchscreen, and may cause a malfunction.

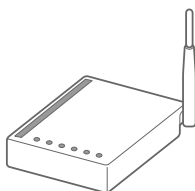
### 2. Touch Button Function

- The touch screen buttons do not need to be pressed hard or excessively. Lightly touch the touch screen buttons and icons.
- When the touch screen is turned off, touch the screen once to brighten the screen, and again to use the functions.
- Turn off the display screen before cleaning.
- Excessive dirt or residue on the display may inhibit the function. The display should be kept clean at all times for optimal performance.
- The touch function may not operate normally if there is moisture on the display. Wipe the display with a soft cloth.
- Do not touch the screen while the refrigerator is initially booting up. Doing so may cause a malfunction.

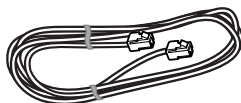
### 3. Necessary Installation Parts

To use the wireless network connection, please verify the following steps:

- The wireless modem can be purchased separately and installed to use smart refrigerator functions such as Food Manager and Weather (linked with smart phone using Wi-Fi) when the product is purchased.
- The user must use a wireless router that supports IEEE 802.11 b/g/n.
- Consult with your internet service provider or install a wireless router to connect your smart refrigerator.
- For best results, install the wireless router as close to the refrigerator as possible.
- For WEP security, IEEE 802.11 b/g is supported. Do not set up IEEE 802.11 n independently.



Wireless outer



LAN cable

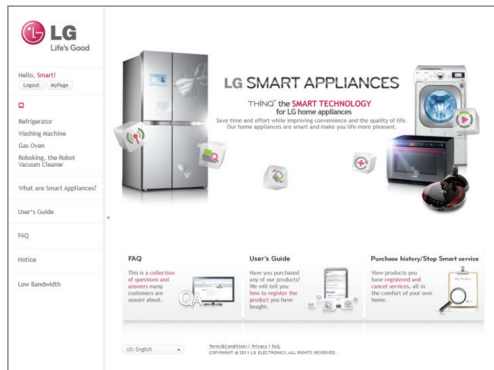
## 4. Note Before Using

To use the connectivity features of your appliance, you must first create a user ID and password at: <http://us.smarthinq.com>



### CAUTION

- Connectivity features are not available unless the product is registered.
- Images may vary.



### WARNING

#### Warning when setting the Wi-Fi network

- LG Electronics is not responsible for any network connection problems or any faults, malfunctions, or errors caused by network connection.
- Network connection may not work properly depending on Internet service provider.
- Wireless network can experience interference from other devices with 2.4 GHz frequency (wireless phone, Bluetooth device, or microwave oven). Interference may also be caused by devices with 5 GHz frequency, the same as any other Wi-Fi devices.
- The surrounding wireless environment can make wireless network service run slowly.
- Failure to turn off all local home networks may cause excessive traffic on some devices.
- Invalid settings of network devices (wired/wireless line sharer, hub) can cause the appliance to operate slowly or not operate properly. Install the devices correctly according to the appropriate manual and set network.
- Certain connected features (such as Program Update) will operate slowly if the Wi-Fi connection strength is not strong. To improve the Wi-Fi signal strength, it is recommended to purchase a Wi-Fi repeater.



## 5. Downloading the Smart Phone Application

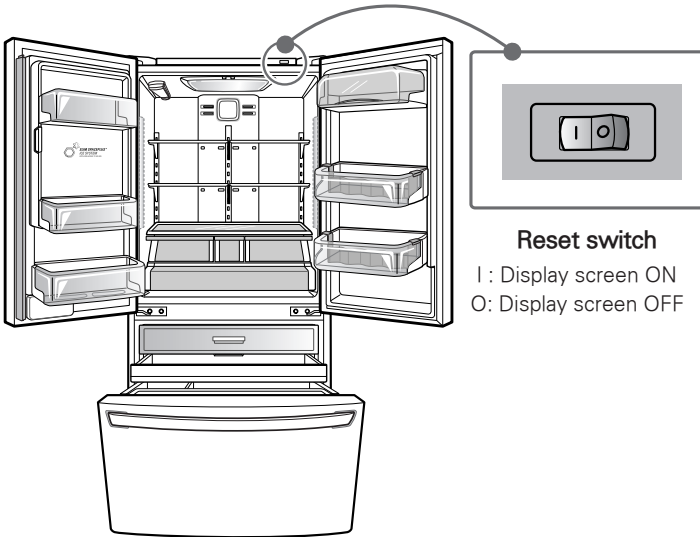
Download the application from the Android smart phone market. Search for 'LG Smart Refrigerator' in the search section of the market.

- Optimal resolution for this application is 480x800.

## 6. Turning the Touch Screen ON or OFF.

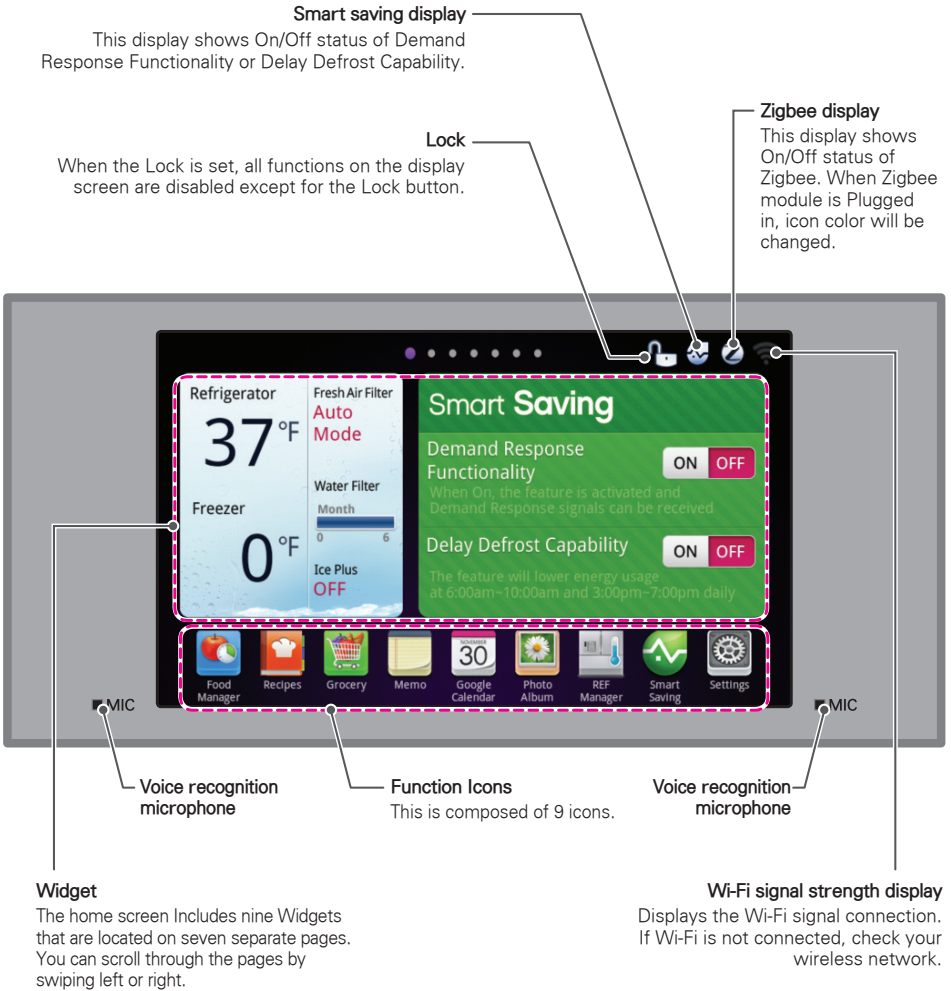
Turn the touch screen on or off using the reset switch.

- If the touch screen does not seem to be operating properly, reset the screen using the reset switch.
- Using the reset switch does not effect the refrigerator/freezer compartments.
- You must open the refrigerator doors to located the reset switch, located on the upper right hand corner (see image below).



## Home Screen


- The Home screen shows Widgets, Function Icons, Date/Time, Wi-Fi, Energy Saving, Zigbee.
- If you wish to change the order and position of Homescreen widget, use Settings > Edit Homescreen.



### CAUTION

- The touch screen will only respond to the human touch. Touch gloves, pens or other objects will not work with the touchscreen, and may cause a malfunction.

## Basic Buttons

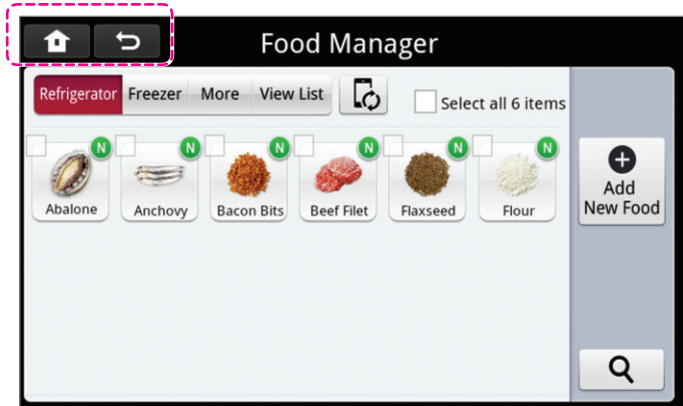
- When a function icon is touched, the basic buttons (   ) will display on the top left corner.

### Home Button

Touch the Home button to return to the Home screen.

### Back Button

Touch the Back button to return to the previous screen.

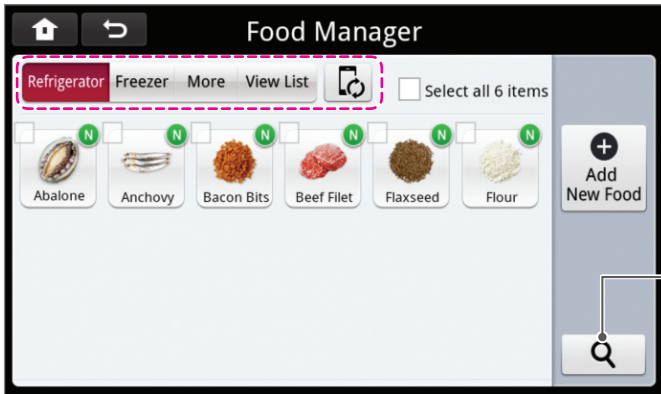


### CAUTION

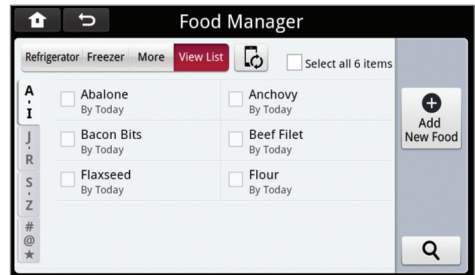
- The touch screen will only respond to the human touch. Touch gloves, pens or other objects will not work with the touchscreen, and may cause a malfunction.

## Food Manager

- Touch the Food Manager button at the bottom of the Home screen.
- In Food Manager, you can search for food items with the Add New Food button or magnify lens button to search using the keypad.



- You can check the food stored in each chamber (Refrigerator, Freezer, etc.).
- Select View List to view the entire food list in alphabetical order.



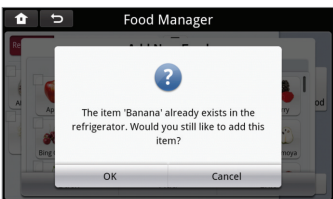
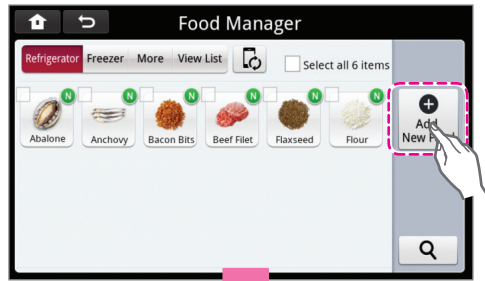
## Food Manager by Category

The Category tab in the Food Manager screen allows you to easily select food items to add to your refrigerator or freezer by category.

- Select the Food Manager button on the Home Screen.
- Select the Refrigerator or Freezer button.
- To add food items to the refrigerator by category, select Add New Food.
- Select the Category tab.
- Select the desired food category.
- Select the food items that you would like to add to the refrigerator. Once all of the desired food items in that category are selected, touch the Add button.
- Touch the Back button to return to the category list and add more food items.

### NOTE

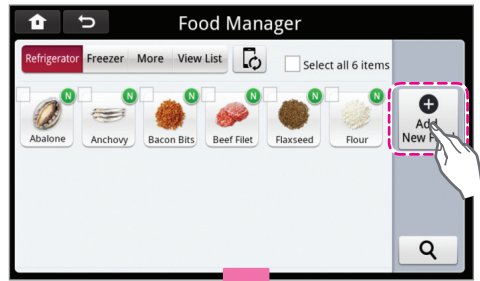
If a food item is already in the refrigerator, an alert will display on the screen.



### Frequently used Items

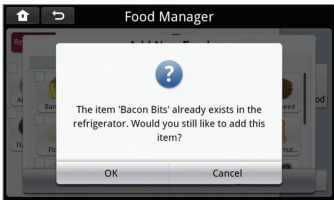
The Frequent tab contains up to 20 of your most frequently used food items.

- Select the Food Manager button on the Home Screen.
- Select the Add New button.
- Select the Frequent tab.
- Select the food item(s) that you would like to add to your refrigerator.
- Select the Add button.




**NOTE**

If a food item is already in the refrigerator, an alert will display on the screen.



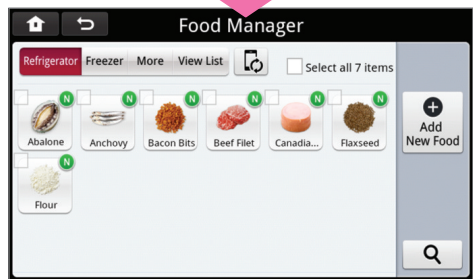
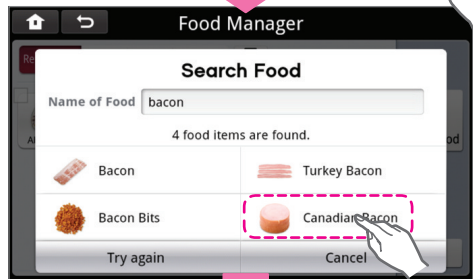
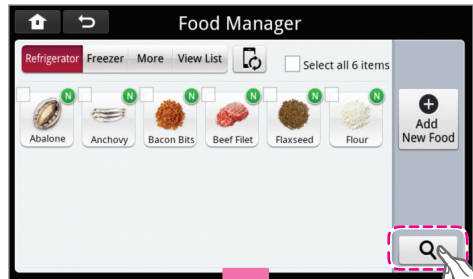
## Food Manager Using Keypad

Search for food items using the keypad.

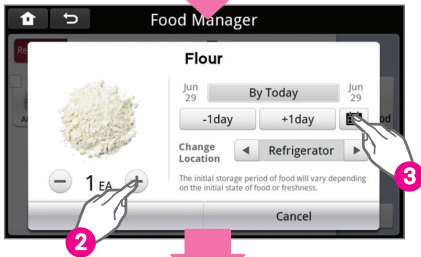
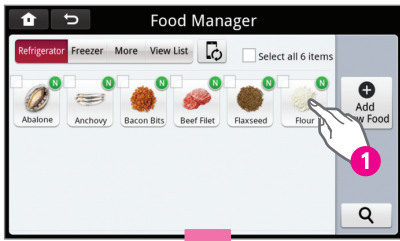
- Select the Food Manager button from the Home screen.
- Select the  .
- Using the keypad, type in the name of the food that you are searching for.
- Touch the magnifying glass button.
- Select the item that you would like to add to your refrigerator.

### NOTE

If a food item is already in the refrigerator, an alert will display on the screen.



## Modifying food information



- After the item has been loaded to the refrigerator, you are able to enter detailed information about the item, such as quantity and an expiration date.

- To enter information on an item, touch the item in the refrigerator.

- Enter desired information into the Food Details popup. To enter quantity, touch the +/- buttons. To enter an expiration date, touch the Change Expiration Date button and use the +/- buttons to set the date.

- The Freshness Tracker widget informs you of food that is about to expire.

### NOTE

- Do not store food longer than the expiration date. Be careful not to add an incorrect expiration date.
- Do not let children play with the refrigerator.
- If you have duplicate food items with different expiration dates, make sure to delete the correct food item with the correct expiration date.
- If transferring food from the refrigerator to the freezer (or the other way around) make sure to change the storage information.
- Consider the time and environment of the food while entering storage information.
- Update the storage information of leftovers.
- Make sure that all food items are properly packaged. Storage information for improperly packaged food may not be the same as the original storage instructions.

### CAUTION

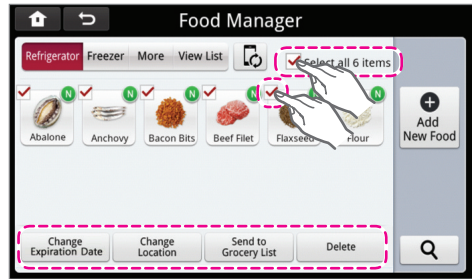
- It is the user's responsibility to determine the correct food storage information. The manufacturer of the food or refrigerator will not be held liable for improper storage information.



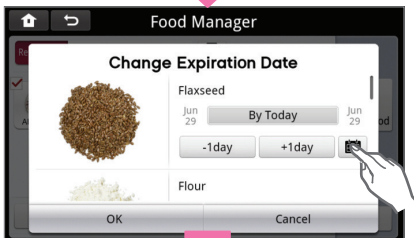
## Function Menu

To edit your refrigerator list or to edit food information.

- Select the Food Manager button on the Home Screen.
- Touch the box on the upper left hand corner of the food item(s) that you would like to edit. To select all food items, touch the box in the upper right hand corner of the display that says "Select all items."
- Select the appropriate function button on the bottom of the screen.



### 1) Change the expiration date (storage period)



- After selecting the items that you would like to change the expiration date for, touch the Change Expire Date button.

- All of the selected items will appear in the display (scroll down to view them).

- Use the calendar button to change the expiration date. You can also use the -1 or +1 buttons to either subtract or add days to the expiration date.

- Touch the Set button (if using the calendar button) or the OK button (if using the -1 day/+ 1 day buttons).

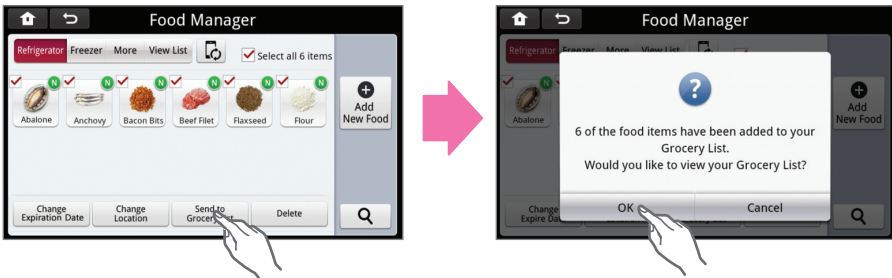
## 2) Change Location



After selecting the items that you would like to change the location of:

- Select the Change Location button.
- Touch either the Refrigerator or Freezer section. A check mark will display in the section selected.
- Touch the OK button when finished or the More button to add more food items.

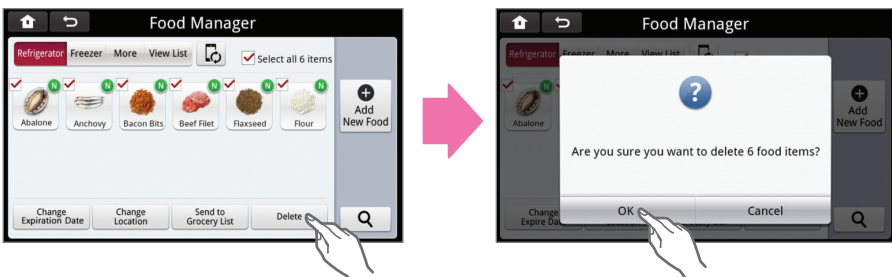
## 3) Send to Grocery list



After selecting the items that you would like to send to your grocery list:

- Touch the Send to Grocery List button.
- Touch the OK button to view your grocery list or the Cancel button to return to the Food Manager screen.

## 4) Delete



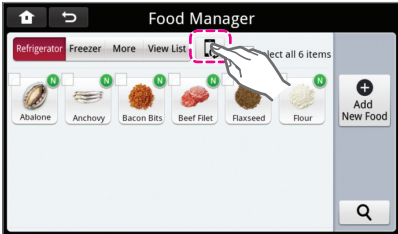
After selecting the items that you would like to delete:

- Touch the Delete button.
- Touch the OK button. Press the Cancel button to cancel the request.

## Send Food List to Phone

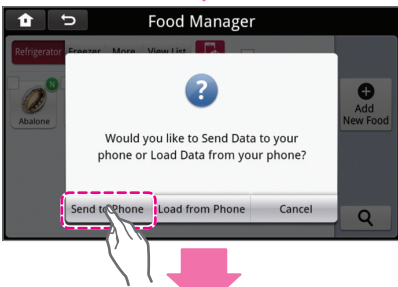
This is the button to send or load the food list to or from the phone.

### 1) Send

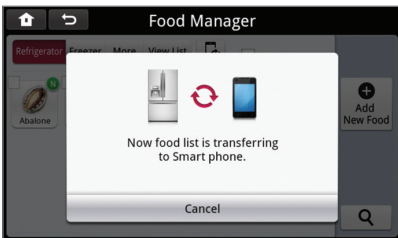


From the Home screen, touch the Food Manager button.

- Touch the phone icon.



- Touch the Send to Phone button.



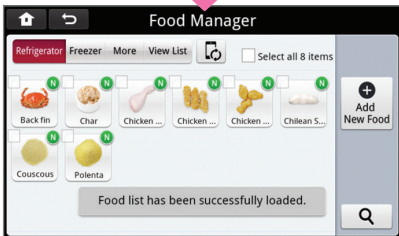
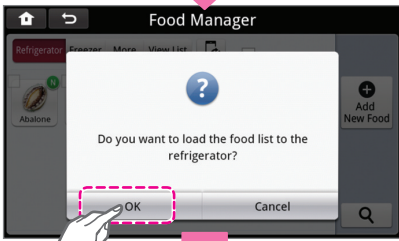
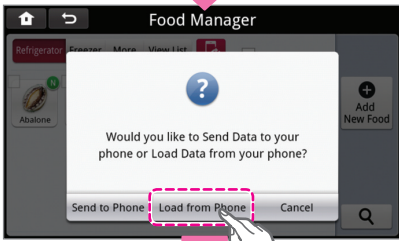
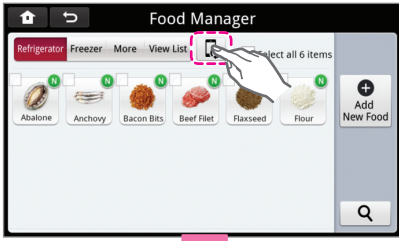
- The refrigerator list will now be sent to the Smart Phone that is registered with the refrigerator.



### CAUTION

- If the user does not log in(Product Registration) in 'Settings' menu, the food information is not updated.

2) Load from Phone



Touch this button to open the current food list sent from the server and smart phone.

- When the information is sent from Smart phone to the display screen, the user can check whether the applicable changes are applied.

- Popup is displayed based on the success/failure of the send result.

From the Home Screen, touch the Food Manager button.

- Touch the phone icon.

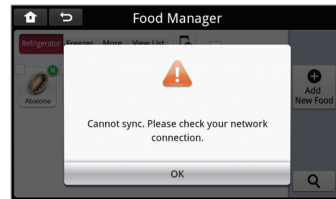
- Touch the Load from Phone button.

- The food list previously sent to your Smart Phone will send to the refrigerator.

**CAUTION**

- If the user does not log in(Product Registration) in 'Settings' menu, the food information is not updated.

► Send/Load error



- In case of wireless network error, the error popup window is displayed. Touch the Ok button and touch the Send or Load button again to refresh the screen.

\* If the network is not connected, the same message is displayed. Touch Ok for use, and there is no issue with Food Manager.

## Recipes



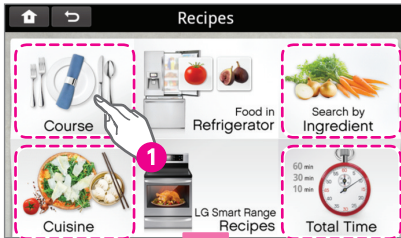
- The Recipes function can be accessed either by selecting the Recipes icon from the bottom of the home page or by touching the Recipes widget on the home screen.
- In the Recipes section there are several options for finding recipes:
  - **Search for Recipes:** You may search for recipes by Course, Total time, Ingredient, or Cuisine.
  - **Food in Refrigerator:** Your refrigerator will recommend recipes to you using items you already have in your refrigerator. You may add ingredients to included in your recommendations through Food Manager. Please refer to the Food Manager section of this manual for more information on this.
  - **LG Smart Range Recipes** displays recipes for food that are able to be made in your LG oven.



## Recipes Search

- There are four different ways to search for recipes: By Course, Ingredient, Cuisine, or Total Time.

### Using Recipes Search



- ❶ Select the desired search method.



- ❷ Once you have selected your preferred search method, a new screen will appear on the left side with a list of categories. Select the category for which you would like to view recipes.

- ❸ A list of recipes pertaining to the category you selected will appear directly to the right of the category list. The category you are currently viewing will remain appear highlighted in the category list.



- ❹ Scroll up and down the recipes list to identify your desired recipe. Once you have found a recipe you would like to view, select the recipe by touching it. The recipe will appear.

- ❺ To return to the View Recipes screen from a recipe, touch the Back button in the upper left hand corner.

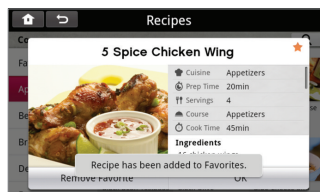
- In the same way, the recipes for Total Time, Ingredient and Cuisine can be viewed.

### Add to Favorites / Remove Favorite

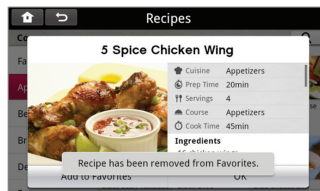
You can register/delete frequently used recipes.



Click!



Add to Favorites



Remove Favorite

## Food in Refrigerator

This feature will recommend recipes to you based on items you have available in your refrigerator.

### Viewing Recommended recipes



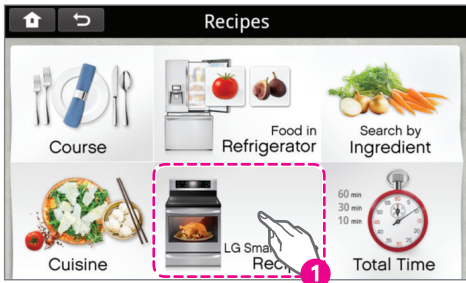
- 1 Touch the Food in the Refrigerator button.
- 2 Select the items in the refrigerator that you would like to see recipes for, or touch the + button to add food that does not appear in your refrigerator.

- 3 Once all of the food items are added, touch the Show Recipes button.

- 4 Scroll through and select the recipes that you would like to display. Touch the OK button to close out the recipe screen or touch the Add to Favorites button to add the recipe into the Favorites section in the LG Smart Range Recipes screen.

## LG Smart Range Recipes

- You can send the selected recipe to your LG Oven.



- ❶ Click LG Smart Range Recipes.



- ❷ Once you have selected your preferred search method, a new screen will appear on the left side with a list of categories. Select the category for which you would like to view recipes.

- ❸ A list of recipes pertaining to the category you selected will appear directly to the right of the category list. The category you are currently viewing will remain highlighted in the category list.

- ❹ Scroll up and down the recipes list to identify your desired recipe. Once you have found a recipe you would like to view, select the recipe by touching it. The recipe will appear.



- ❺ Touch the Send to LG Oven button, and the recipe will be sent to your LG Oven.

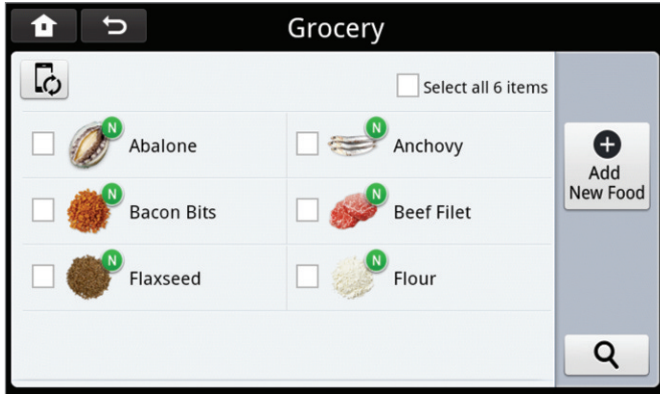




## Grocery



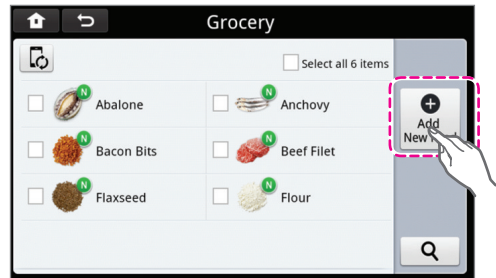
- Touch the Grocery icon at the bottom of the Home Screen.
- The Grocery function allows you to make a grocery list on your refrigerator and send the list to your Smart Phone.
- User can put the item to buy in the list and manage the shopping basket.
- The shopping basket list of the product can be interfaced with smart phone using Phone Sync function.



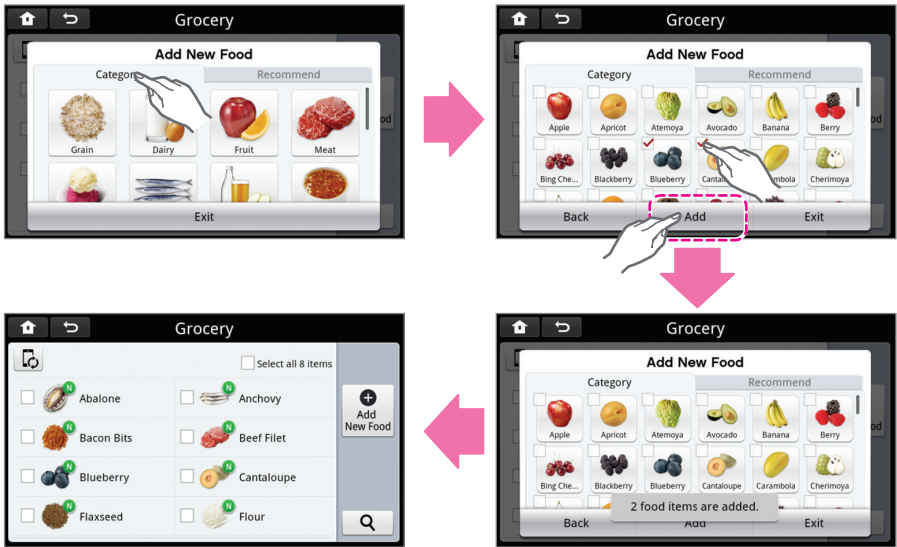
### Add New Food

To make a grocery list:

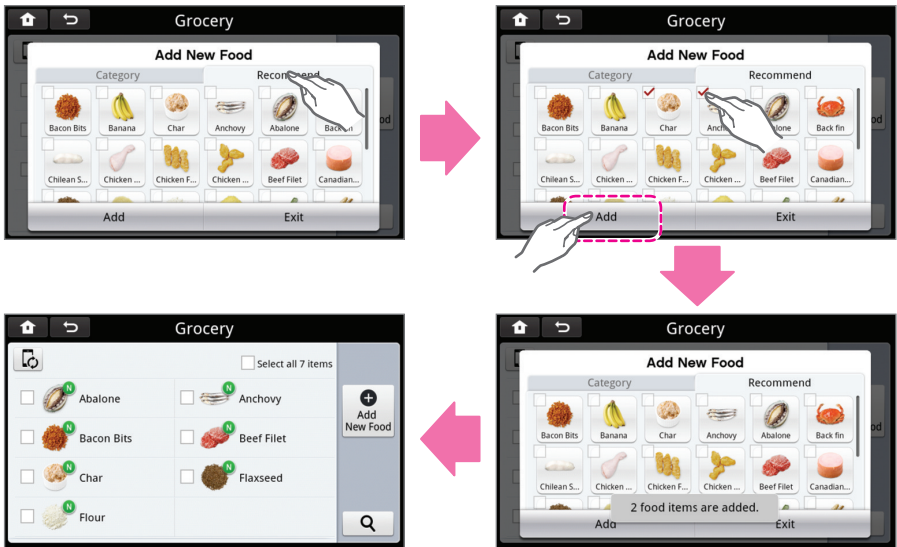
- Touch the Grocery button on the Home screen.
- Touch the Add New Food button.
- Search for food in the Category or Recommend tabs.
- Select the food items that you would like to add to your grocery list by touching the food item(s) icons. Make sure that the box in the upper left hand corner of the item is checked.
- Touch the Add button.



Category



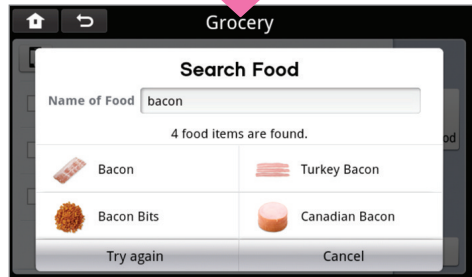
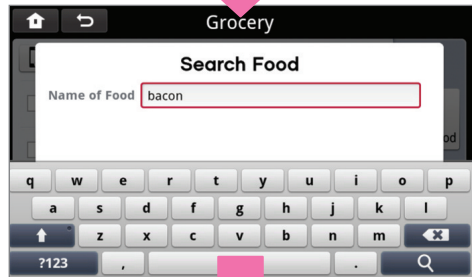
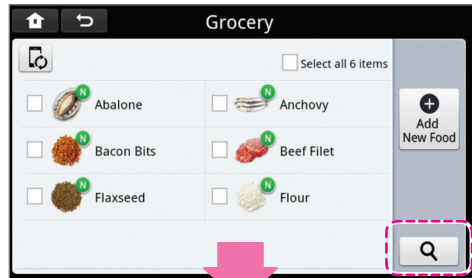
Recommend



## To Add Food to the Grocery List using a Keypad

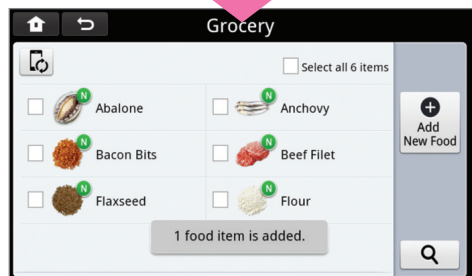
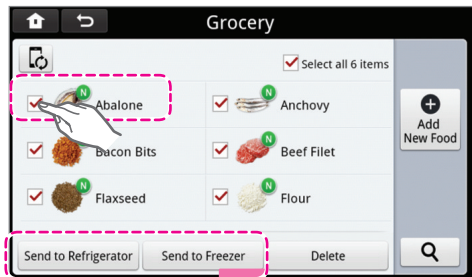
- Navigate to the grocery list.
- Touch the magnifying glass button.
- Type in the name of the food that you are searching for.
- Touch the magnifying glass button to search.
- Select the desired food item from the search list.

If the food item does not show up, then touch the Try Again button and retry. Otherwise, the item may not be an option on the refrigerator.



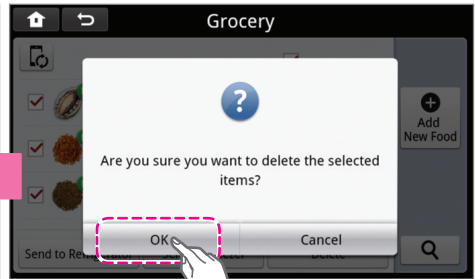
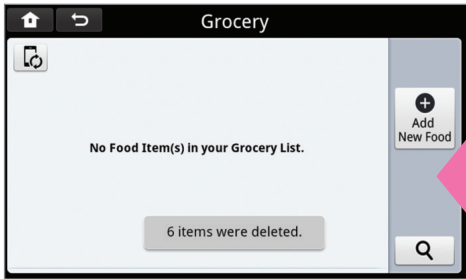
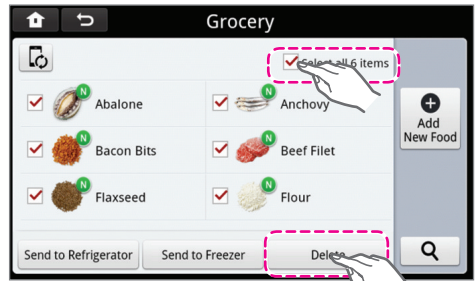
## To Add the Grocery Items to the Food Manager

- Navigate to the grocery list.
- Select the items that you would like to add to either the freezer or refrigerator.
- Touch either the Send to Refrigerator or Send to Freezer button, depending on where you will be storing the selected food.



### To Delete Groceries from the List

- Navigate to the grocery list.
- Select the groceries that you would like to delete.



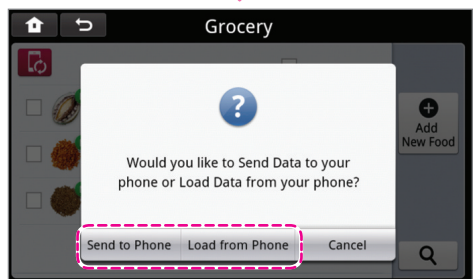
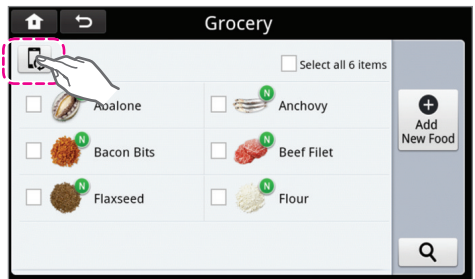
### Phone

To send or load the grocery list to your Smart Phone:

- Navigate to the grocery list.
- Touch the phone button.

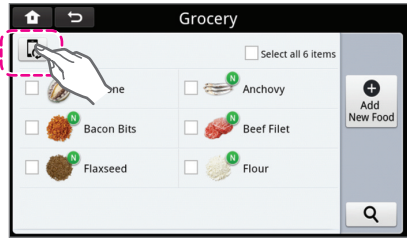
**CAUTION**

- You will not be able to load the grocery list to your smart phone if the refrigerator has not been registered.

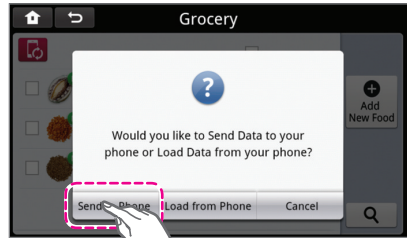


To send the grocery list to your Smart Phone:

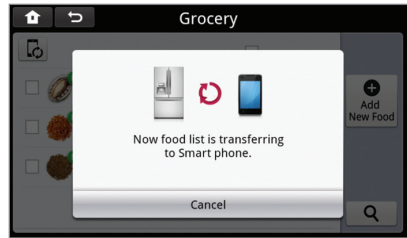
- Touch the phone button.



- Touch the Sent to Phone button.

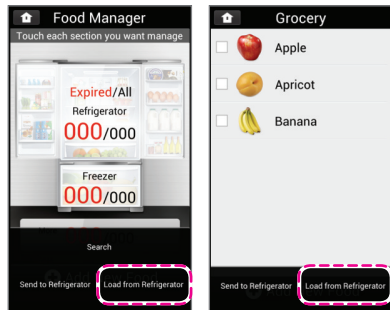


- When the information transmission is completed, the transmission success message will be displayed.



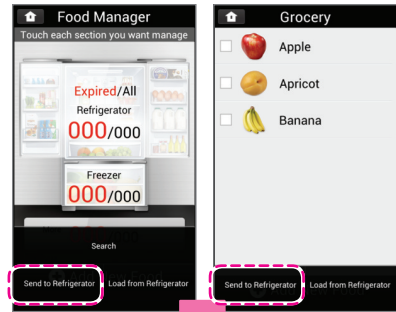
- Run LG refrigerator app, log in, enter Food Manager or Grocery, and press option key(or button) of the smart phone, then Load from Refrigerator menu will be displayed.

You can synchronize the information of the product with the smart phone through this menu.

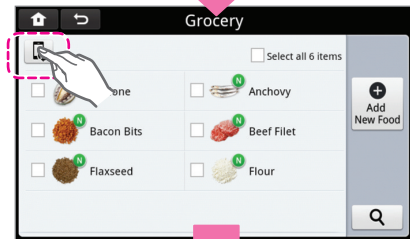


To load a grocery list from your Smart Phone

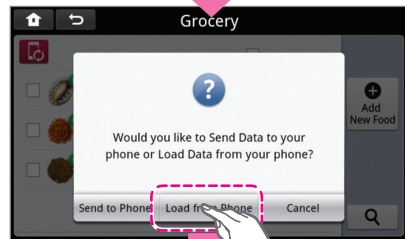
- Run LG refrigerator app, log in, enter Food Manager or Grocery, and press option key(or button) of the smart phone to run Send to Refrigerator.



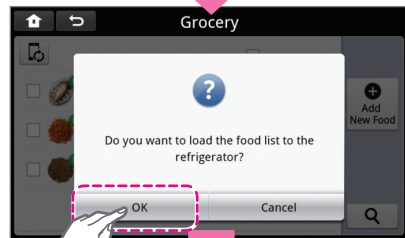
- Touch the phone icon.



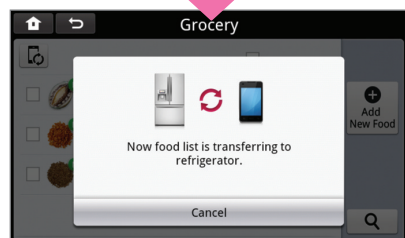
- Touch the Load from Phone button.



- Touch the OK button.



- Try to synchronize the information.



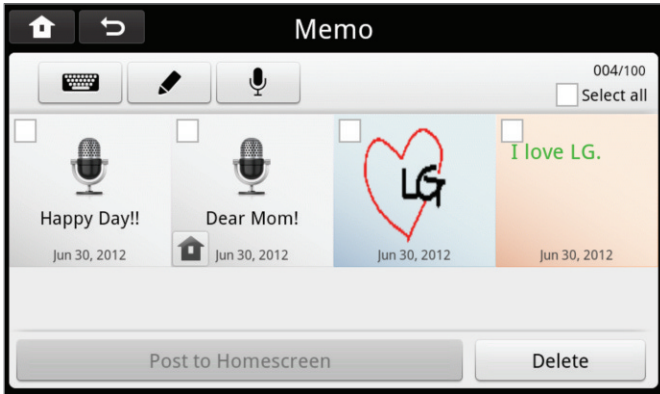
**CAUTION**

- For the synchronization of the information of the product with the smart phone, the product must be registered, and you must log in with the ID and password of the product registered after installing LG refrigerator application in the smart phone.

## Memo



- Touch the Memo icon on the bottom of the Home Screen or the Memo widget.
- The concept of post-it is expanded for text input and it also supports drawing memo and voice memo.



Add memo by typing



Add memo by drawing



Add memo by voice



Register to home screen widget

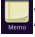


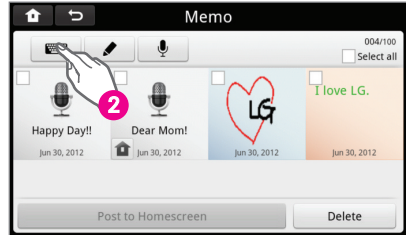
Delete memo

## Creating a Memo

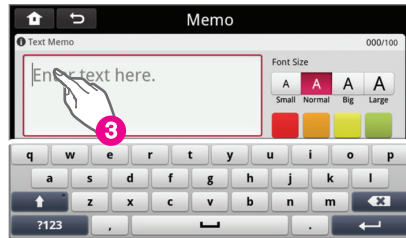
Create a new memo by either typing a message or drawing a picture.

### 1) Typing a memo

- 1 Touch the Memo (  ) button on the Home screen.
- 2 Touch the keypad button.



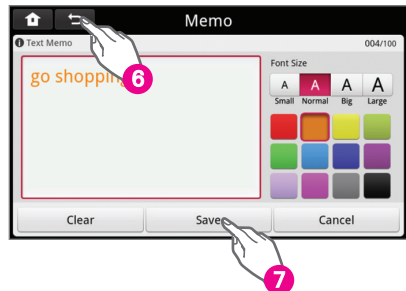
- 3 Touch the blank screen that says "Enter text here."



- 4 A keypad will appear in the display. Touch the color and font size that you would like to use.
- 5 Type your message using the keypad.

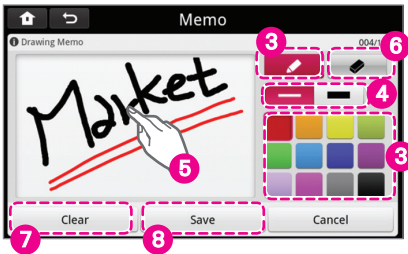
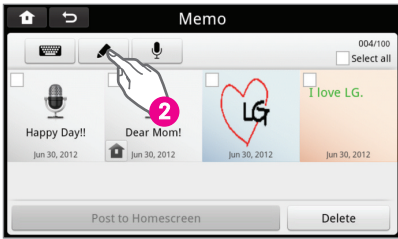


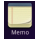
- 6 When finished typing your message, touch the arrow button on the top left of the display.
- 7 Touch the Save button.



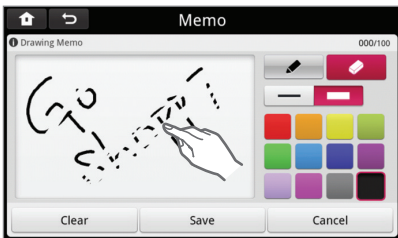


## 2) Drawing a memo



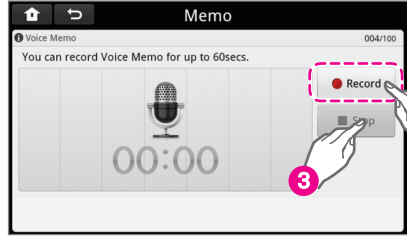
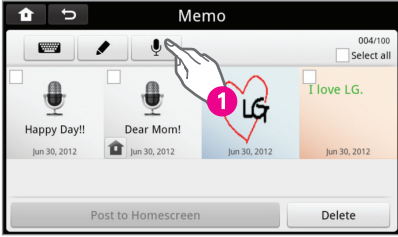
- 1 Touch the Memo (  ) button on the Home screen.
- 2 Touch the crayon icon.
- 3 Select the color of your memo.
- 4 Select the thickness of the line that you would like the memo to be.
- 5 Use your finger on the Drawing Memo screen to draw a picture.
- 6 Touch the eraser button to erase part of the memo. Use your finger as the eraser.
- 7 Touch the Clear button to clear the screen.
- 8 Touch the Save button to save the memo.

### \* How to use the eraser



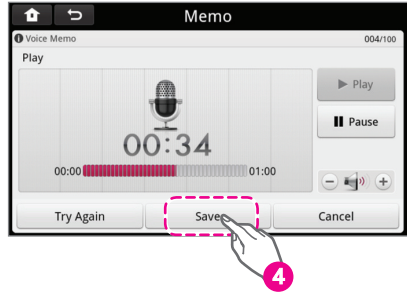
- Select the eraser button.
- Use your finger to wipe away the information in the memo screen.

3) Entering memo with voice

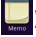


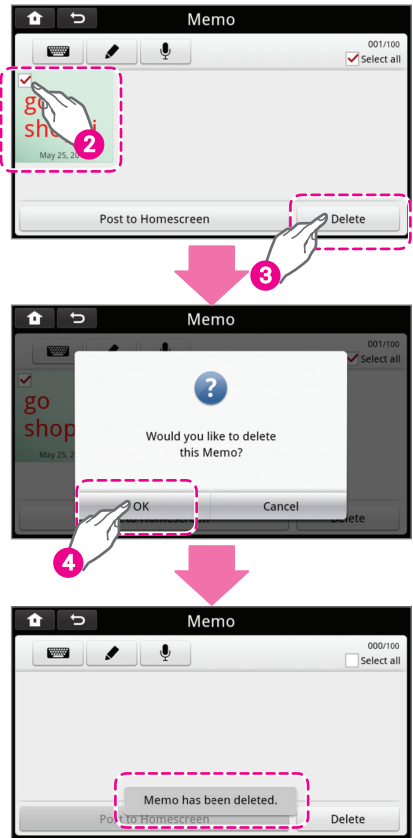
- ❶ Select microphone button.
- ❷ Touch Record button and record the words for memo.
- ❸ ❹ Touch Stop button and Save.

- You can listen to the recorded memo before saving it.
- You can adjust the volume during the Play.



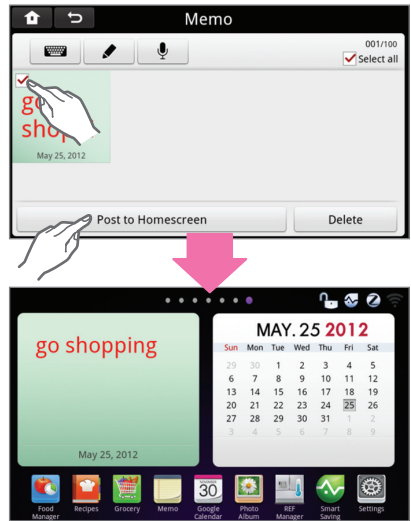
## Delete a Memo

- 1 Touch the Memo (  ) button from the Home screen.
- 2 Select the memo that you would like to delete.
- 3 Touch the Delete button.
- 4 Touch the OK button.

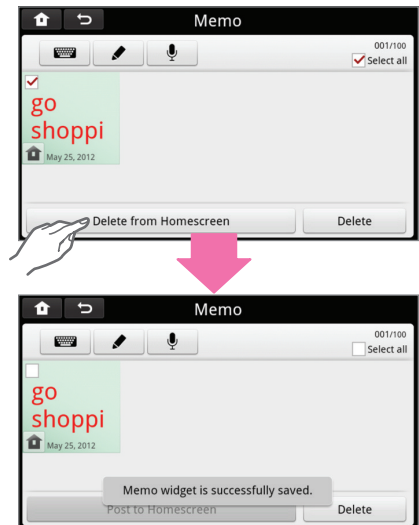


## Save Memo to Home Screen

- Touch the Memo (Memo icon) button on the Home screen.
- Touch the memo that you would like to save to the Home Screen.
- Touch the Post to Homescreen button.
- View the Memo by navigating to the Home Screen next to the weather widget.



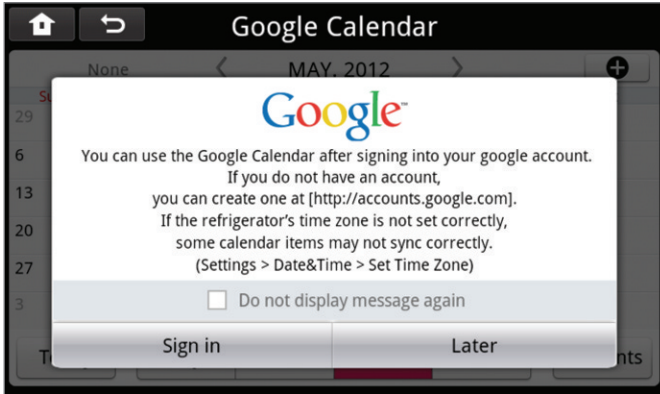
- Touch the Memo (Memo icon) button from the Homes Screen.
- Select the Memo that is posted to the Home Screen.
- Touch the Delete from Homescreen button.



## Google Calendar



- Sign into your Google account to access Google Calendar from your refrigerator.



### CAUTION

- If the refrigerator's time zone is not set correctly, some calendar items may not sync correctly. (Settings > Date & Time > Set Time Zone)
- There may be some limitations compared to the functions provided in Web.

## Log In to your Google Account

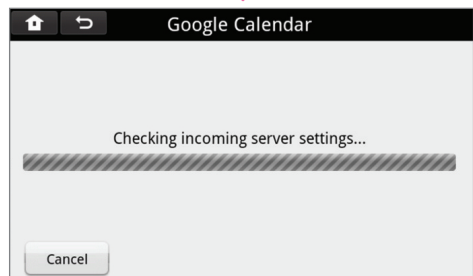
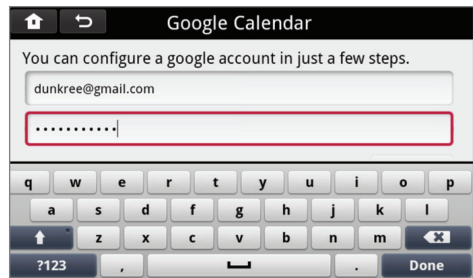


### NOTE

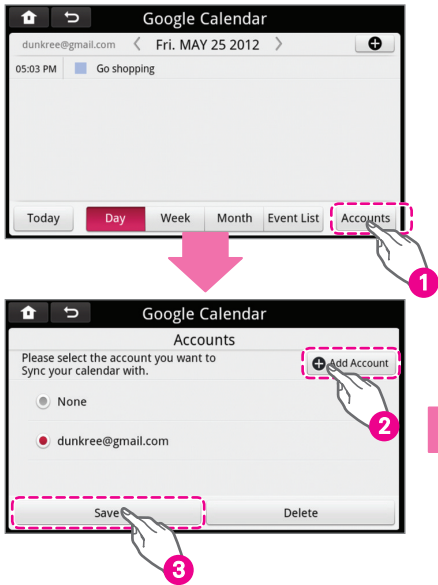
You must already have a Google account in order to log in from your refrigerator. If you do not have a Google account, then create one on a PC, smart phone, etc.

- If logging in for the first time, touch the Google Calendar button on the Home Screen.

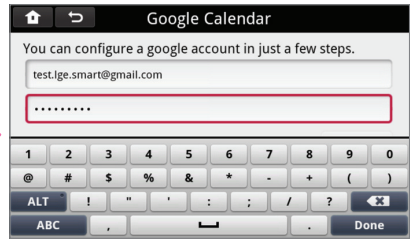
- Enter your gmail account name and password.



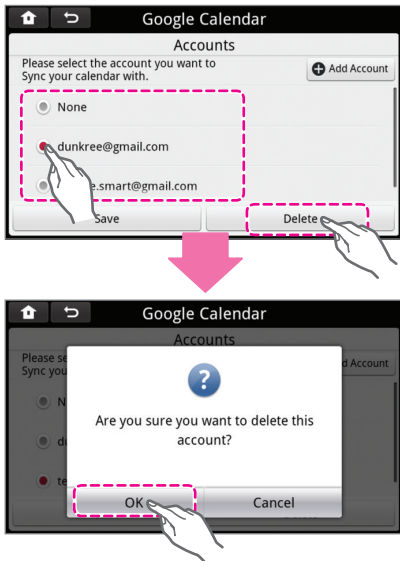
**To add another account (max. 5)**



- 1 Select Accounts button to manage the account.
  - 2 Select Add Accounts to add account.
  - 3 Input the account to add, and select Save button.
- \* When you insert only ID in the account, '@gmail.com' suffix is automatically added.

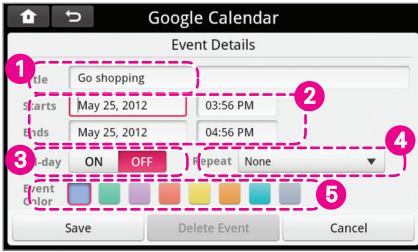


**To delete a Google account from the Accounts screen**



- Navigate to the Google Calendar.
  - Touch the Accounts button.
  - Select the account that you would like to delete.
  - Touch the Delete button.
  - Touch the OK button.
- \* Basic account(None) cannot be deleted.

**Schedule events**



- Customize your event. Touch the Title box and a Keypad will display. Type in the name of your event. Touch Done.
- Enter the start and end date by selecting the the date and time buttons. Adjust the date/ time by using the +/- buttons on the display.



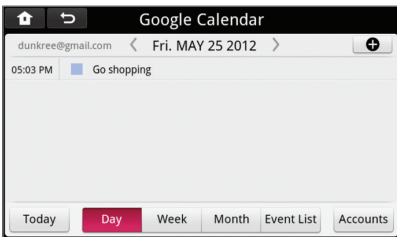
- Touch the Repetition button to make it a recurring or one-time event. Swipe up or down for the repetition options.
- Touch the Save button to save the event.

- Touch the Set button to save the date/time settings.
- For Repeat (4), the functions are reduced than those provided in Web.

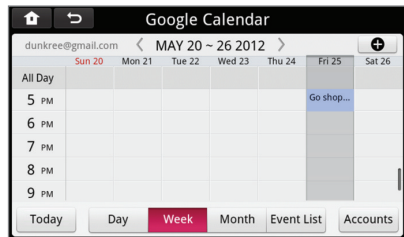
**View Events**

- Navigate to the Calendar widget screen.
- Touch the arrow buttons next to select the month.
- Use the buttons on the bottom of the screen to view events either by Day, Week, Month or as an Event List.

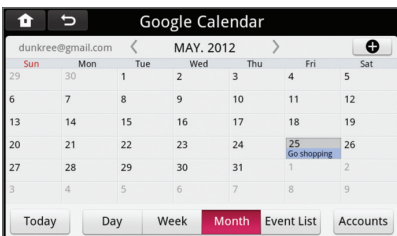
**1 Search daily event**



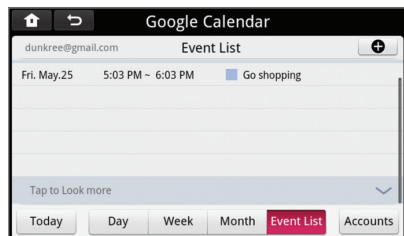
**2 Search weekly event**



**3 Search Monthly event**



**4 When selecting List Tasks**



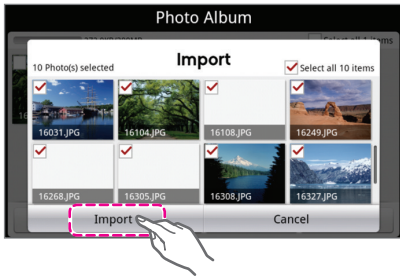
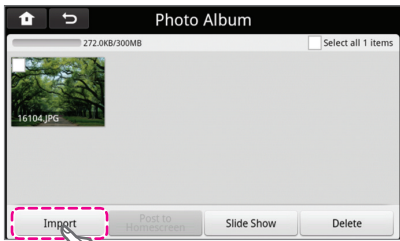
## Photo Album



- Import (load) pictures to your refrigerator from an SD card or Smart Phone. View the pictures as a slide show, on the Home screen or in a Photo Album.

### Uploading photos to the album

\* When image is saved in Photo Album

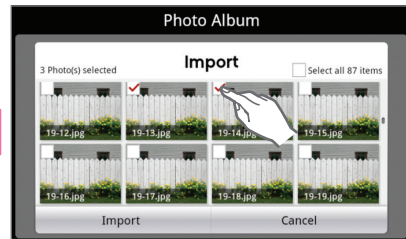


- This should appear in the beginning of the Photo Album section.
- If there are no photos loaded to the album, a screen will display instructing you to import photos from an SD card.
- Insert your SD card into the SD port.
- The photos loaded to your SD card will display on the screen.

- Select the photos that you would like to add to the photo album, or touch the Select All On/Off button to load all photos on the SD card.
- After selecting the desired photos, touch the Import button.
- Photos are now saved in Photo Album.



\* When image is not saved in Photo Album



- Pictures can be imported up to 300MB.
- Imported picture size is automatically converted to suit the resolution of the display.
- When you download LG refrigerator applet to the smart phone, you can send the picture to the refrigerator from the phone.

Uploading photos to the album by smart phone



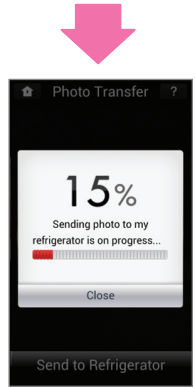
- Download 'LG Refrigerator' app from Google play or AppStore and install the app.
- Log in ThinQ homepage (<http://us.smarthinq.com>) with the registered ID/PW.

**CAUTION**


- To send pictures to the smart phone, you must first register the product (log in) with ThinQ ID/PW from the refrigerator.

- You can send the pictures from the smart phone to the refrigerator by pressing 'Photo Transfer' menu.

\* If the picture is already in the refrigerator, 'Photo Alert' window pops up.



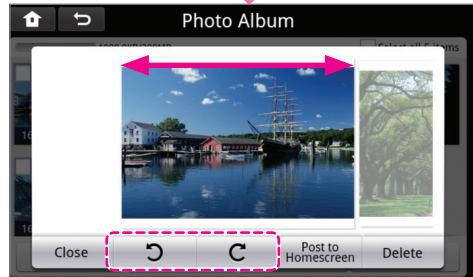
## View Photos

- From the Home screen, touch the Photo Album (  ) button.

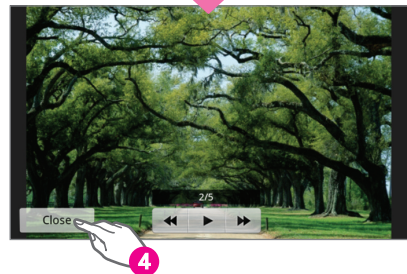


- If you turn the picture, you can see the next picture.

- Touch   button to rotate the picture.



## Slide Show

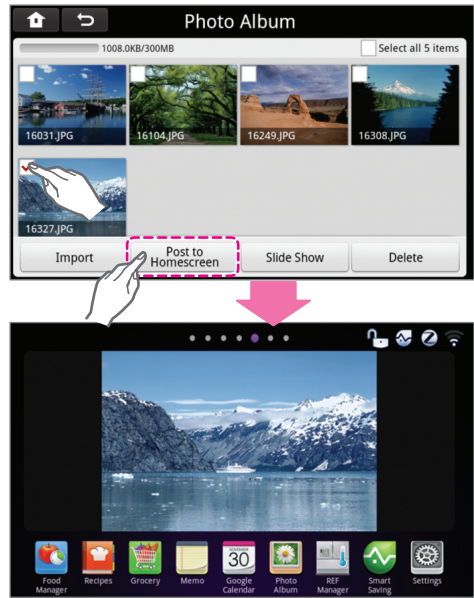


- **1** Photos can be selected one by one. Or by touching "Select All" all photos can be selected.
- **2** After selecting photos, touch Slide Show to view a slide show of photos.

- **3** Touch the screen to stop the slide show and view the photo being displayed.
- **4** Touch the Close button to switch to the main screen of Photo Album.

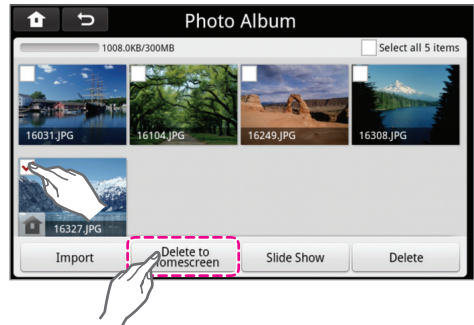
## Saving Photo to Home Screen

- Select picture to register to Home Screen.
- Touch Post to Homescreen button to register to Home Screen.



## Deleting Photo from Home Screen

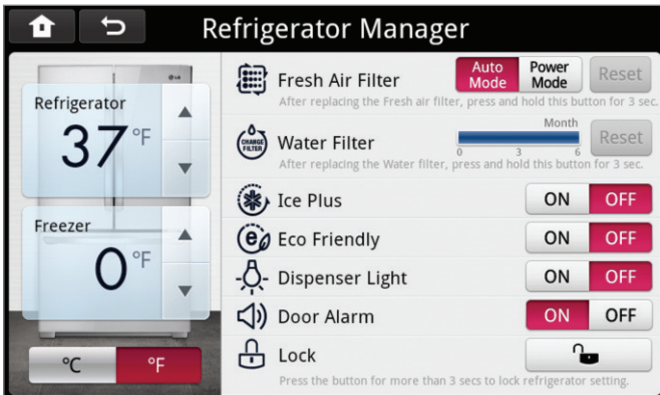
- If you want to delete a picture from Home Screen, touch Delete to Homescreen.



## REF Manager



- The Ref Manager is where you would go to change the refrigerator/freezer settings or to activate certain features.
- Temperature Settings
- Touch the up and down arrows in either the Refrigerator or Freezer sections to change the temperature in either compartment.
- Refer to the Control Panel section for more information on the use of the refrigerator controls.

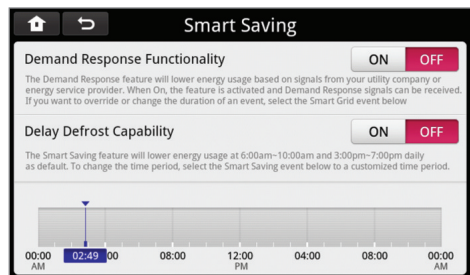


## Smart Saving



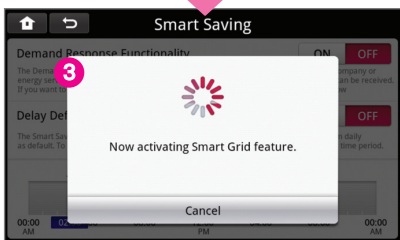
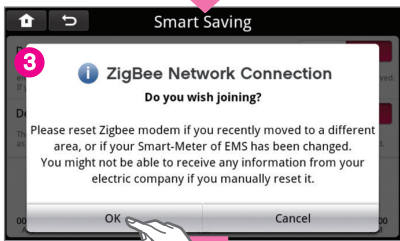
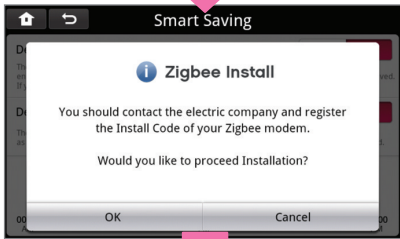
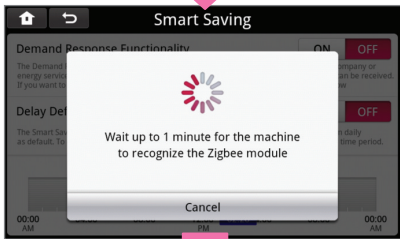
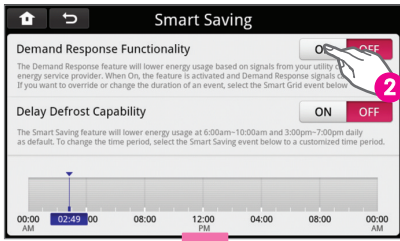
### Demand Response Functionality

- The Demand Response feature will lower energy usage based on signals from your utility company or energy service provider. When on, the feature is activated and Demand Response signals can be received. If you want to override or change the duration of an event, select the Smart Grid event.
- When this function is on, the Delay Defrost function will automatically turn off.



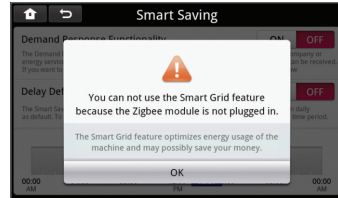
- \* This function can be used by the power company to provide Demand Response signal transmission service. Please contact the power company.

## Demand Response Functionality : Activation



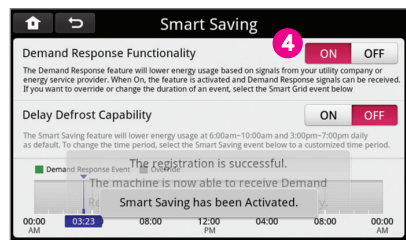
- 1 Enter Smart Saving (  ) menu.
- 2 Turn on Demand Response Functionality. It automatically checks the installed Zigbee module, and if Zigbee module is not installed, it alerts with confirmation window.

\* If Zigbee module is not installed, the following window pops up.

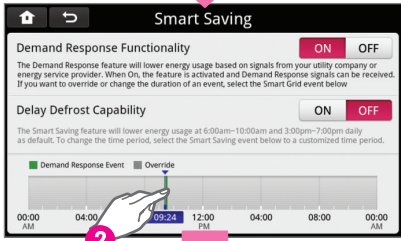
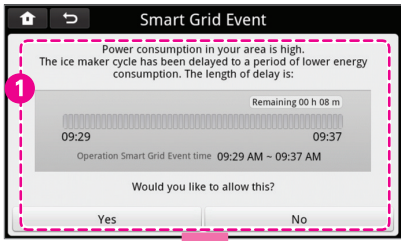


- 3 If Zigbee module is properly installed, it goes through Joining process with Utility company.
- 4 If it is properly connected, Demand Response Functionality will be On, and it receives Demand Response Signal from the smart meter installed at home to run the smart grid function.

\* According to the types of the Demand Response signals, the refrigerator operation for power saving will change.



**Demand Response Functionality : Reception of operation information and setting**

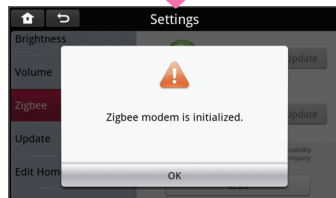
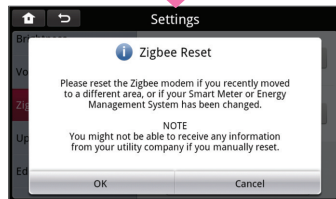
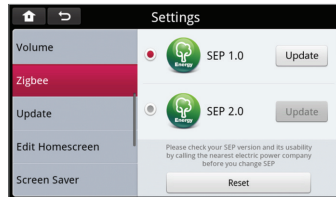


1 In the Demand Response operation interval, operation information is automatically displayed on the screen.

\* When you Override by selecting No in the corresponding screen, the corresponding signal is automatically ignored, and the refrigerator operates in normal state.

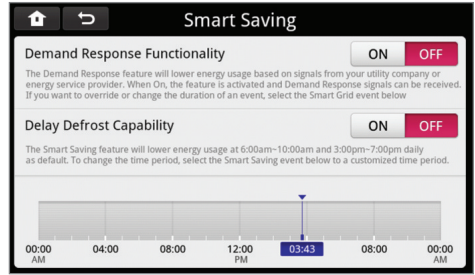
2 You can change time and run Override operation by selecting the signal mark received before the operation of Demand Response.

\* When you replace Zigbee Module, or if there is a change in Smart Meter interfacing with the power company, you need to enter 'Settings > Zigbee', run Zigbee Reset by pressing Reset button, turn on 'Smart Saving > Demand Response Functionality', and run Zigbee Setup.

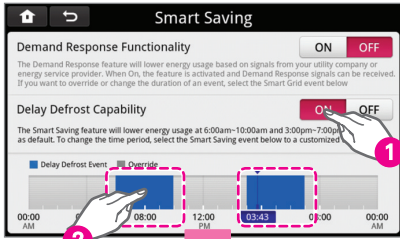


### Delay Defrost Capability

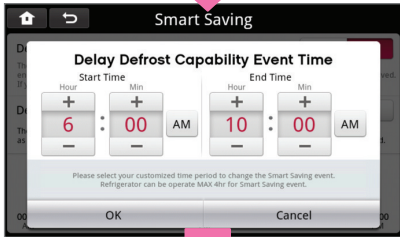
- The Smart Saving feature will lower energy usage at 6:00am-10:00am and 3:00pm-7:00pm daily as default. To change the time period, select the Smart Saving event below to customized time period.



### Delay Defrost Capability



1 Enter Smart Saving (Smart Saving icon) and Turn on Delay Defrost Capability.

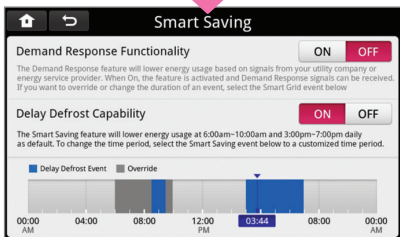


2 Traditionally, power saving operation is automatically performed for the interval No. 2 (06:00~10:00AM, 03:00~07:00PM) in North America with expensive electricity rate.

When you select the corresponding Delay Defrost Event interval, the power saving time can be adjusted in the corresponding interval.



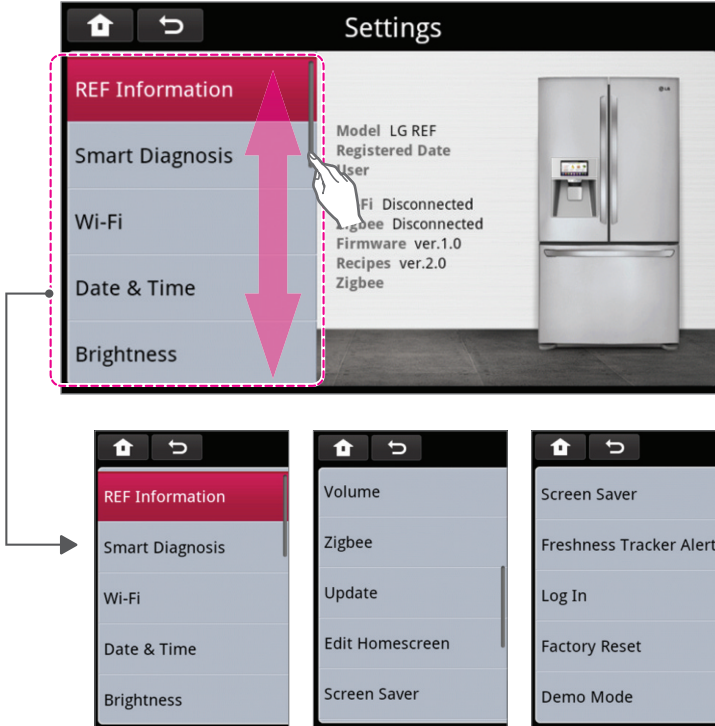
3 When the Delay Defrost Event interval is modified, the corresponding interval is marked in blue color in the graph, and power saving is performed for the interval. The remaining interval is marked with gray color, and it operates normally for the interval. (For example, change the front interval)





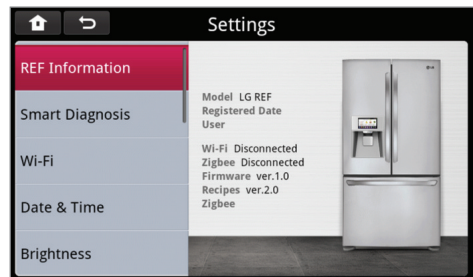
## Settings

- Touch the Settings button to view or modify the display settings: REF Information, Smart Diagnosis, Wi-Fi, Date & Time, Brightness, Volume, Zigbee, Update, Edit Homescreen, Screen Saver, Freshness Tracker Alert, Log In, Factory Reset, Demo Mode.



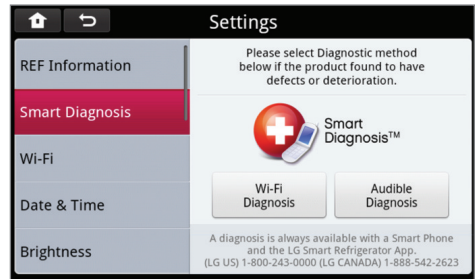
### REF Information

- Displays product information, connections and software versions.

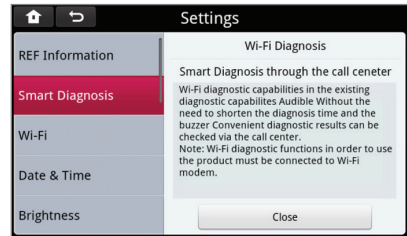
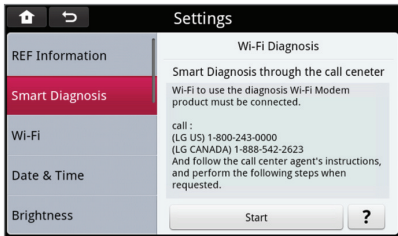


## Smart Diagnosis

- Should you experience any problems with your appliance, it has the capability of transmitting troubleshooting information via phone or Wi-Fi.
- Select the method of Smart Diagnosis that you would like to use.

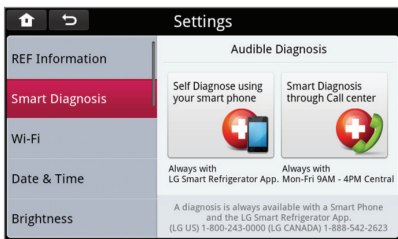


## Wi-Fi Diagnosis



- Touch the Wi-Fi Diagnosis button from the Smart Diagnosis Settings screen.
- To use this feature, the appliance must be connected to a Wi-Fi network using the Wi-Fi modem.
- Call the Service Center and follow the agent's instructions to send the diagnosis contents via Wi-Fi.

## Audible Diagnosis



- Touch the Audible Diagnosis button to use Smart Diagnosis using your Smart Phone or the call center.

### Smart Diagnosis using your Smart Phone:

1. Touch the Audible Diagnosis button.
2. Touch the Self Diagnose using your smart phone button.
3. Follow the instructions on the display screen.

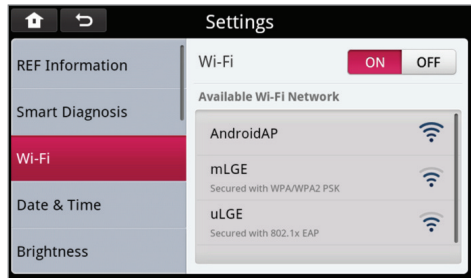
### Smart Diagnosis using the LG Customer Support Center:

1. Touch the Audible Diagnosis button.
2. Touch the Smart diagnosis through the call center button.
3. Follow the directions on the display screen.

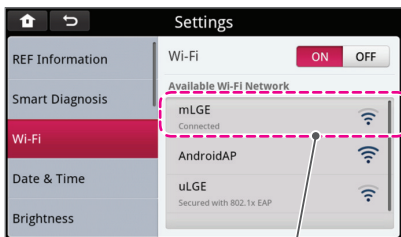
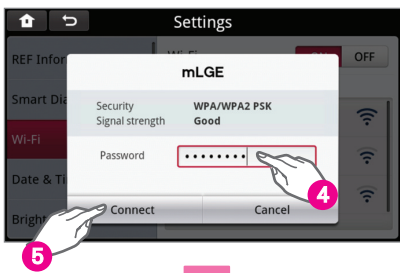
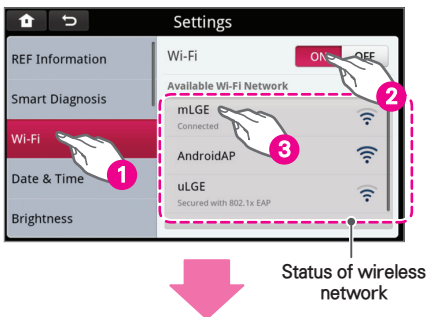
\* Please refer to **Smart Diagnosis** for more detail description of smart diagnosis.

## Wi-Fi

- Touch the Wi-Fi button on the Settings screen.
- Touch the Wi-Fi on/off button. The Wi-Fi is turned on when there is a check mark in the box.



### Connecting to a wireless network



Wireless network connection completed state (Example of router mLGE)

- 1 Touch the Wi-Fi button from the Settings screen.
- 2 Touch the ON button.
- 3 Select your network from the list of available networks.
- 4 If necessary, enter your wireless password. Refer to the next page for instructions on how to enter your wireless password using the keypad.
- 5 Touch the Connect button to complete the wireless setup.



### CAUTION

- When searching for the wireless network, wireless routers other than the one installed in the house hold used nearby can be searched. Using other routers without permission is illegal and can result in legal consequences when found. Therefore always use only the wireless routers that are authorized for use.

## How to enter your wireless password



- Touch the Password box
- A keypad will display.
- Enter your password.
- Touch the Done button.



Shift for lowercase or capital letters



Space button



Delete button



Alphabet/Number and special character switch button



Role of exchanging English and Special characters



### WARNING

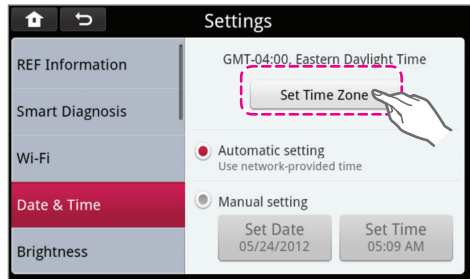
#### Warning when setting the Wi-Fi network

- LG Electronics is not responsible for any network connection problems or any faults, malfunctions, or errors caused by network connection.
- Network connection may not work properly depending on Internet service provider.
- Wireless network can experience interference from other devices with 2.4 GHz frequency (wireless phone, Bluetooth device, or microwave oven). Interference may also be caused by devices with 5 GHz frequency, the same as any other Wi-Fi devices.
- The surrounding wireless environment can make wireless network service run slowly.
- Failure to turn off all local home networks may cause excessive traffic on some devices.
- Invalid settings of network devices (wired/wireless line sharer, hub) can cause the appliance to operate slowly or not operate properly. Install the devices correctly according to the appropriate manual and set network.
- Certain connected features (such as Program Update) will operate slowly if the Wi-Fi connection strength is not strong. To improve the Wi-Fi signal strength, it is recommended to purchase a Wi-Fi repeater.

## Date & Time

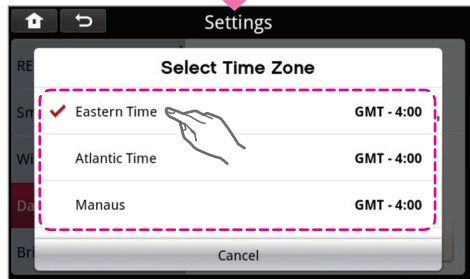
### Select your time zone

- Touch the Date & Time button from the Settings screen.
- Touch the Set Time Zone button.
- Scroll through the time zones by swiping the Select Time Zone screen up or down.
- Touch the desired time zone button.



### To manually set the date and time

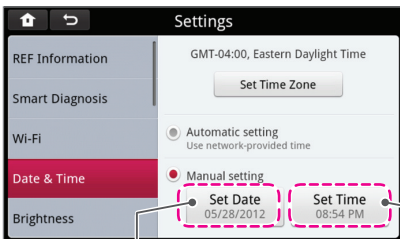
- Touch the Manual Setting circle.
- Touch the Set Date or Set Time button.
- Use the +/- buttons to increase or decrease the numbers for the date or time. If setting the time, touch the PM/AM button to change it from either PM or AM.
- Touch the Set button.



### CAUTION

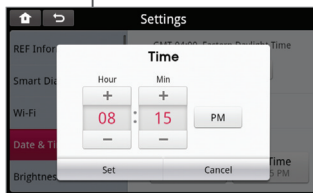
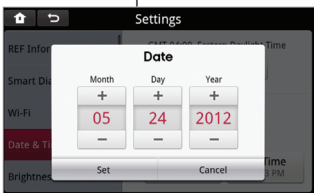
- If Time Zone is not correct, the Sync of Google Calendar information may not be correct.

### When the user sets the date and time



### CAUTION

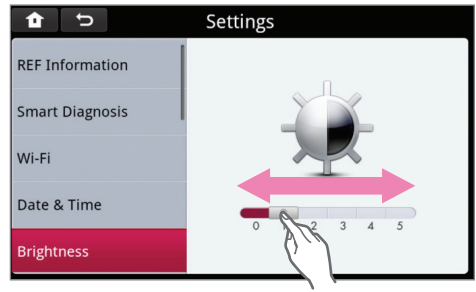
- Saved data value can be different from that of the network based on the date/time set up by the user.



## Brightness

Touch the Brightness button from the Settings screen.

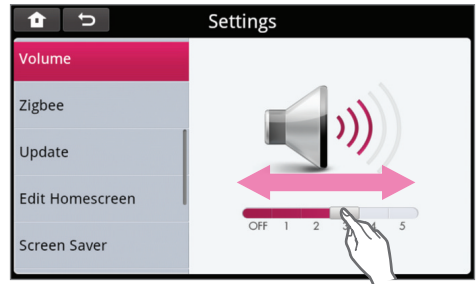
- Move the scroll bar left (darker) or right (brighter) to control the brightness of the display screen.



## Volume

Touch the Volume button from the Settings screen.

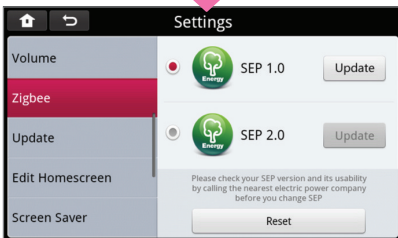
- Move the scroll bar left (softer) or right (louder) to control the volume of the display screen.
- Move the bar all the way to the left to turn the volume off.



## Zigbee

- The Zigbee Smart Energy Profile (SEP) protocol allows for communication between this appliance and the utility company.

### Update Zigbee



- Touch the Zigbee button from the Settings screen.

- Touch the Continue button.

- Available updates may appear in the screen.

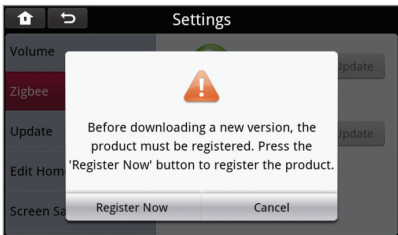
- Touch the Update button of whichever update you would like to use.

\* The appliance must be registered in order to use this feature.



### CAUTION

- Smart Grid feature can be used only when Smart Grid service is provided by the utility company. The LG Electronics Zigbee module must be compatible with the Smart Meter and installed properly prior to usage.
- If it is not logged-in, you can log-in to use update.



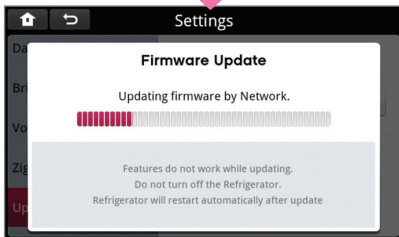
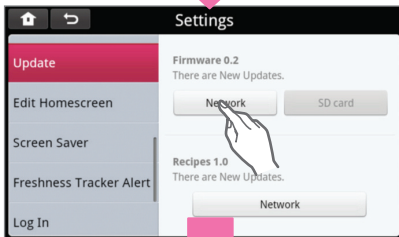
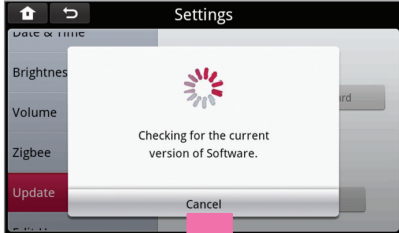
- If the appliance is not registered, an alert popup will display informing you that you need to register the appliance.

- After the appliance is registered, login. Refer to the Log In section in the Settings screen.

## Update

Once the user registration is complete, the firmware and recipes will automatically update through the network.

### Update firmware



- Once you are registered, touch the Update button from the Settings screen.
- Firmware and recipe updates are automatically checked.

- Touch the Network button if "There are new updates" appears in the display.

- After the update, the system will automatically reboot. Do not touch the screen while the firmware is updating.

- The update may take longer depending on the Wi-Fi connection. Please be patient. If the screen stalls during the update (progress bar has stopped) open the door and flip the reset switch off and on.



### WARNING

#### Warning when setting the Wi-Fi network

- LG Electronics is not responsible for any network connection problems or any faults, malfunctions, or errors caused by network connection.
- Network connection may not work properly depending on Internet service provider.
- Wireless network can experience interference from other devices with 2.4 GHz frequency (wireless phone, Bluetooth device, or microwave oven). Interference may also be caused by devices with 5 GHz frequency, the same as any other Wi-Fi devices.
- The surrounding wireless environment can make wireless network service run slowly.
- Failure to turn off all local home networks may cause excessive traffic on some devices.
- Invalid settings of network devices (wired/wireless line sharer, hub) can cause the appliance to operate slowly or not operate properly. Install the devices correctly according to the appropriate manual and set network.
- Certain connected features (such as Program Update) will operate slowly if the Wi-Fi connection strength is not strong. To improve the Wi-Fi signal strength, it is recommended to purchase a Wi-Fi repeater.

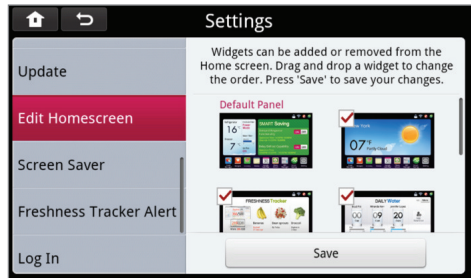


## Edit Homescreen

Widgets can be added or removed from the Home screen. Check the widgets that you would like to appear on the Home Screen. Uncheck the ones that you would like left off.

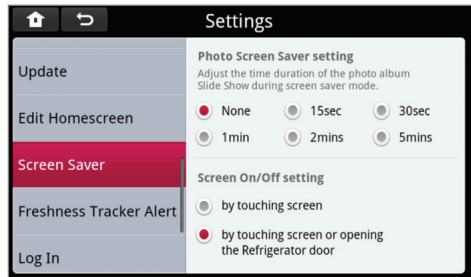
**Drag and drop a widget to change the order.**  
To do this:

- Touch and hold the widget until the white box in the upper left hand corner of the widget disappears.
- Drag the widget in the desired location.
- Touch the Save button to save your changes.



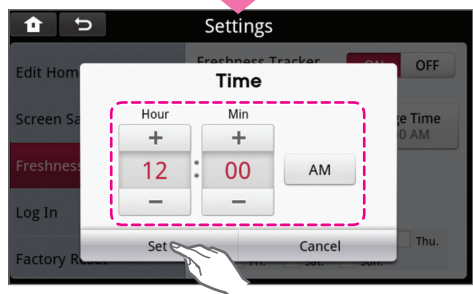
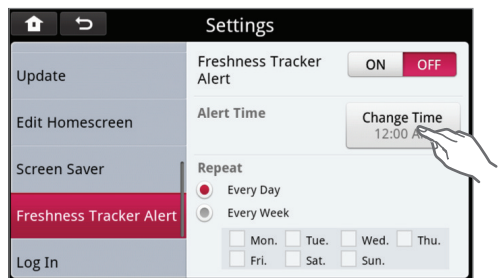
## Screen Saver

Touch the Screen Saver button in the Settings screen to modify the screen saver settings.



## Freshness Tracker Alert

Touch the Freshness Tracker Alert button in the Settings screen to change the settings of your Freshness Tracker.



## Log In

- You can register(log in) the product with the ID/PW subscribed/registered to home page(<http://us.smarthinq.com>)

- 1 Touch the Log In button from the Settings screen.

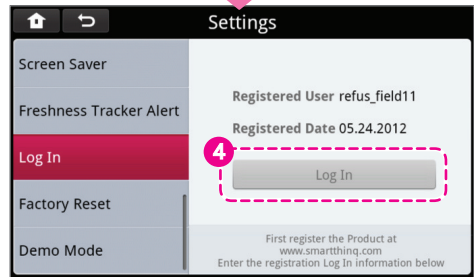
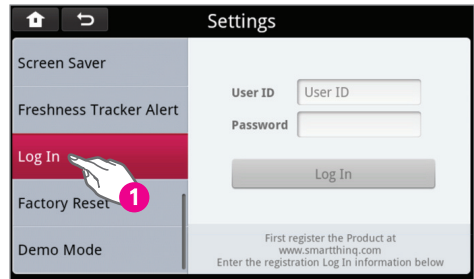
- 2 3 Touch the User ID box. A keypad will display.
  - Enter your User ID using the keypad.
  - Touch the Done button.
  - Touch the Password box. A keypad will display.
  - Enter your password.
  - Touch the Done button.

- 4 Touch the Log In button.



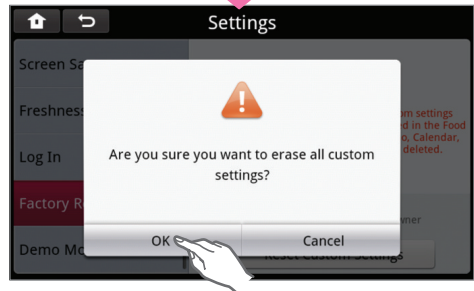
### CAUTION

- It must be connected to the wireless network for Log In.
- To use LG refrigerator app in the smart phone, you must register the product(Log In).



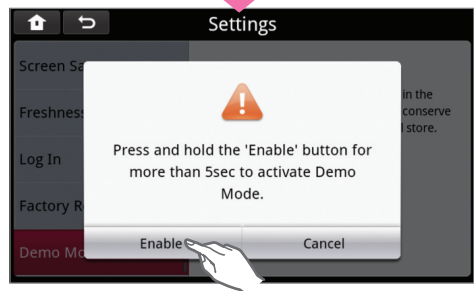
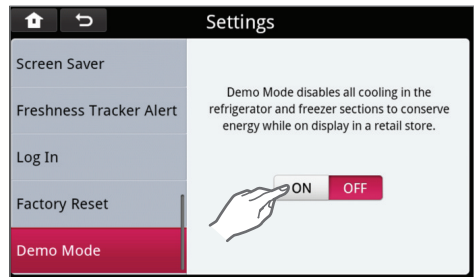
## Factory Reset

The Factory Reset erases all custom settings linked to the registered account. Data stored in the Food manager, Favorite Recipes, Grocery, Memo, Calendar, Photo Album and User Log In will be deleted.



## Demo Mode

- The Demo Mode disables all cooling in the refrigerator and freezer sections to conserve energy while on display in a retail store.
- Touch the OFF button to turn Demo Mode off.
- To turn ON Demo Mode, Press and hold the Enable button for approximately five seconds.

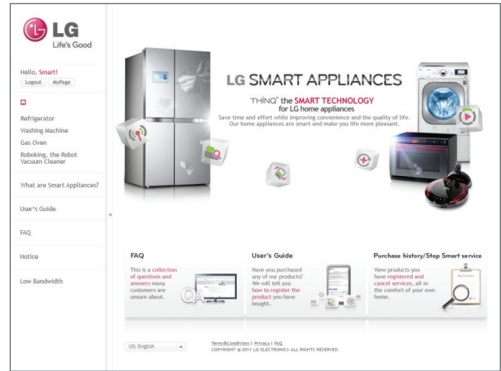


## How to set up ID/Password for User Registration

To use the connectivity features of your appliance, you must first create a user ID and password at the LG SMARTTHINQ website (<http://us.smarthinq.com>). From your home computer, or other computer with internet access, open the SMARTTHINQ website and follow the instructions below for creating your ID and password.

- Click Sign In in the left corner of the web page.
- On the Sign In page, below the ID and password boxes, click the Membership Register button.
- On the next page, you must agree to the terms of use and the privacy statement. Click "Confirm."
- Next, enter your email address. This will be your user ID. You will receive a confirmation email for activating the account at that email address, and this ID will be entered on the ID and password screen on your appliance when registering the appliance.
- Enter a password. Passwords are case sensitive, and you will need to enter this password on your appliance when you register the appliance. The password should be 6~12 characters, and you should make note of it for later use.
- Type the characters from the security box into the box to the right of the security box.
- Click the "Confirm" button. The system will send you an email containing a link to confirm your identity for the account.
- Click the link in the confirmation email, and the website will display a confirmation page.

You are now ready to register your appliances so you can take advantage of all the connectivity features of your LG SMARTTHINQ appliance.

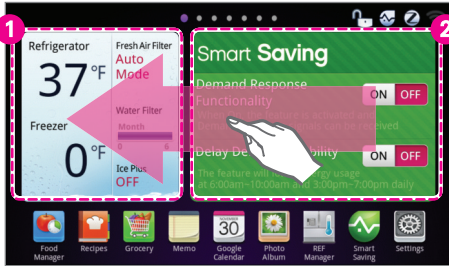


### CAUTION

- Connectivity features are not available unless the product is registered.
- Images may vary.

## Using the Widgets

- A widget is a mini application that can be accessed without using a web browser.
- There are nine widgets that are loaded to the display: REF Manager, Smart Saving, Weather, Freshness Tracker, Daily Water, Photo Album, Recipes, Memo and Calendar.
- View the widgets by swiping your finger left or right on the display screen. The Home screen can be set to any of the below widget screens.
- You can set the food storage information with food storage indicator window in 'Settings > Freshness Tracker Alert'.



### 1. REF Manager widget

- Shows information of REF manager. (Refrigerator/ Freezer temperature, Fresh Air Filter Mode, Water Filter status, Ice Plus Mode)

### 2. Smart Saving widget

- Easily turn on/off the Smart Saving feature modes.



### 3. Weather widget

- Displays the current temperature and weather image of the set region.
- Refer to the "Setting the weather widget" section for more information.



### 4. Freshness Tracker widget

- Shows the food items that have passed or are approaching their expiration dates.

\* Swipe in the direction of the arrows to navigate to the next widgets.



**5. Daily Water widget**

- When one of the registered users is selected, the amount of water that he/she used for the day will be displayed.
- Refer to the “Setting the Daily Water widget” section for more information.



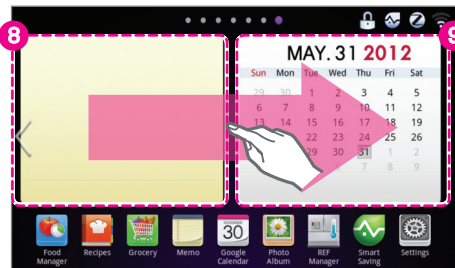
**6. Photo widget**

- The selected Homescreen photo will appear on the display.



**7. Recommended recipe widget**

- This recommends and displays recipes that can be prepared based on the stored food in random order.
- The recipe shown in the widget is refreshed at 7AM every day, and after visiting Food Manager contents, recipe widget is also refreshed.



**8. Memo widget**

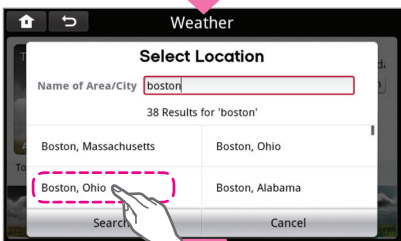
- Displays the memo that you chose to post to the Home screen.

**9. Calendar widget**

- Displays the calendar and weekly events.

\* Swipe in the direction of the arrows to navigate to the next widgets.

Setting the weather widget



- To change the weather region on the Weather widget:

- Touch the weather widget on the Home screen.

- Touch the Location button on the upper right hand corner of the display.

- Touch the region box.

- A Keypad will display. Type the region that you would like to search and touch the Done button.

- Select the desired city from the search results.

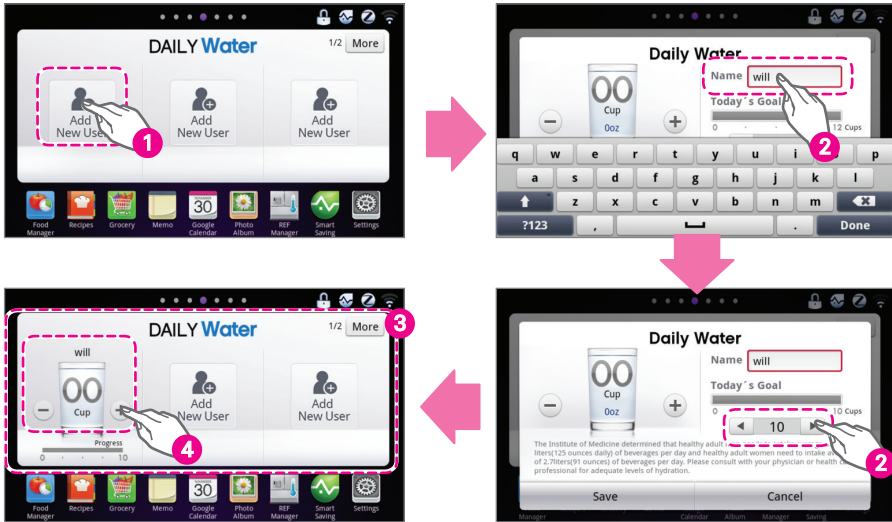


**CAUTION**

- This function only works when the system is connected to the Wi-Fi network.
- Applicable weather only includes weather information provided by Accuweather Co. Ltd.

**Setting the Daily Water widget**

- Users can register. (max 6 people)
- When one of the registered users is selected, the amount of dispensed water by the user is to be displayed.
- The amount of drink water per day will be reset to 00:00AM.



- 1 Add user by pressing 'Add New User' button in Daily Water widget.
  - 2 Enter the name, and set the target number of the glasses of water to drink using left and right arrows.(1 glass is based on 8 oz.)
  - 3 Added user will be displayed in Daily Water, and maximum of 6 users may be added.
  - 4 The user who had water can record the consumed amount of water using +/- button at both sides of the user's name in Daily Water widget.
- \* The number of glasses consume is reset at 00:00 every day.

**Deleting a user**



- 1 Select a registered user in Daily Water widget and enter detail screen.
- 2 Press Reset button to delete user profile.



# MAINTENANCE

## Cleaning

- Both the refrigerator and freezer sections defrost automatically; however, clean both sections about once a month to prevent odors.
- Wipe up spills immediately.
- Always unplug the refrigeration before cleaning.

## General Cleaning Tips

- Unplug refrigerator or disconnect power.
- Remove all removable parts, such as shelves, crispers, etc.
- Use a clean sponge or soft cloth and a mild detergent in warm water. Do not use abrasive or harsh cleaners.
- Hand wash, rinse and dry all surfaces thoroughly.

## Exterior

Waxing external painted metal surfaces helps provide rust protection. Do not wax plastic parts. Wax painted metal surfaces at least twice a year using appliance wax (or auto paste wax). Apply wax with a clean, soft cloth.

For products with a stainless steel exterior, use a clean sponge or soft cloth and a mild detergent in warm water. Do not use abrasive or harsh cleaners. Dry thoroughly with a soft cloth.



### CAUTION

- Do not use a rough cloth or sponge when cleaning the interior and exterior of the refrigerator.
- Do not place your hand on the bottom surface of the refrigerator when opening and closing.



### WARNING

Use non-flammable cleaner. Failure to do so can result in fire, explosion, or death.

## Inside Walls (allow freezer to warm up so the cloth will not stick)

To help remove odors, you can wash the inside of the refrigerator with a mixture of baking soda and warm water. Mix 2 tablespoons of baking soda to 1 quart of water (26 g soda to 1 liter water.) Be sure the baking soda is completely dissolved so it does not scratch the surfaces of the refrigerator.

## Door Liners and Gaskets

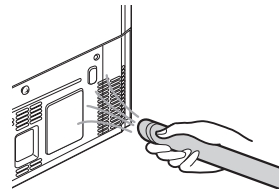
Use a clean sponge or soft cloth and a mild detergent in warm water. Do not use cleaning waxes, concentrated detergents, bleaches, or cleaners containing petroleum on plastic refrigerator parts.

## Plastic Parts (covers and panels)

Use a clean sponge or soft cloth and a mild detergent in warm water. Do not use window sprays, abrasive cleansers, or flammable fluids. These can scratch or damage the material.

## Condenser Coils

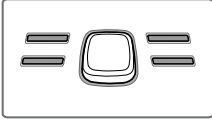
Use a vacuum cleaner with an attachment to clean the condenser cover and vents. Do not remove the panel covering the condenser coil area.



## Replacing the Fresh Air Filter

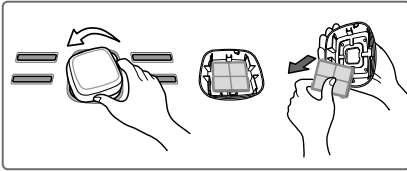
It is recommended that you replace the air filter:

- Approximately every six months.
- When the CHANGE FILTER light turns on.



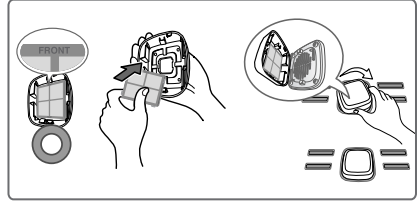
### 1 Remove the Old Filter

Turn the filter cover to the left to detach from the refrigerator wall. The filter is located on the inside of the filter cover. Remove the filter from the cover and replace it with a new filter.



### 2 Install a New Air Filter.

Place the new filter inside of the cover with the side that says "Front" facing outward. Turn the filter cover to the right to attach to the refrigerator wall.

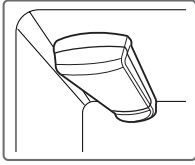


After changing the filter, push and hold the Air Filter button for three seconds to reset the filter sensor.

## Replacing the Water Filter

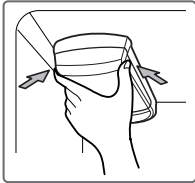
It is recommended that you replace the water filter:

- Approximately every six months.
- When the water filter indicator turns on.
- When the water dispenser output decreases.
- When the ice cubes are smaller than normal.



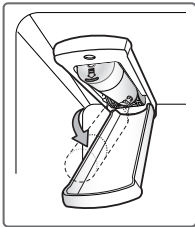
### 1 Remove the old water filter.

- Lower or remove the top left shelf to allow the water filter to rotate all the way down.
- Press the push button to open the water filter cover.



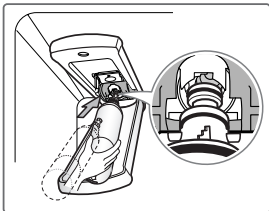
**NOTE:** Replacing the water filter causes a small amount of water (around 1 oz. or 25 cc) to drain. Place a cup under the front end of the water filter cover to collect any leaking water. Hold the water filter upright, once it is removed, to prevent any remaining water from spilling out of the water filter.

- Pull the water filter downward and pull out. Make sure to rotate the filter down completely before pulling it out of the manifold hole.

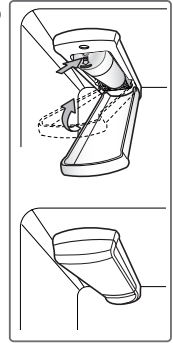


### 2 Replace with a new water filter.

- Take the new water filter out of its packing and remove the protective cover from the o-rings. With water filter tabs in the horizontal position, push the new water filter into the manifold hole until it stops.



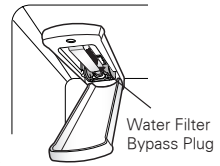
- Rotate the water filter up into position and close the cover. The cover will click when closed correctly.



- ### 3
- After the water filter is replaced, dispense 2.5 gallons of water (flush for approximately 5 minutes) to remove trapped air and contaminants from the system. Do not dispense the entire 2.5 gallon amount continuously. Depress and release the dispenser pad for cycles of 30 seconds ON and 60 seconds OFF.

### 4 Water Filter Bypass Plug

Keep the water filter bypass plug. You **MUST** use the water filter bypass plug when a replacement water filter cartridge is not available.



### CAUTION

DO NOT operate refrigerator without water filter or water filter plug installed.

### NOTE

- To purchase a replacement water filter:
  - Visit your local dealer or distributor
  - Web: Find Parts & Accessories from Support section of lg.com
  - Call : 1-800-243-0000 (USA)  
1-888-542-2623 (Canada)
- Part number of the replacement water filter: ADQ36006101

## Performance Data Sheet

Model: LG ADQ36006101-S

Use Replacement Cartridge: ADQ36006101

The concentration of the indicated substances in water entering the system was reduced to a concentration less than or equal to the permissible limit for water leaving the system as specified in NSF/ANSI Standard 42 and Standard 53.



System tested and certified by NSF International against NSF/ANSI Standard 42 and Standard 53 for the reduction of substances listed below.

Contaminant Reduction	Average Influent	NSF specified Challenge Concentration	Avg % Reduction	Average Product Water Concentration	Max Permissible Product Water Concentration	NSF Reduction requirements	NSF Test Report
Chlorine Taste and Odor	2.1 mg/L	2.0 mg/L $\pm$ 10%	97.2%	0.06 mg/L	N/A	$\geq$ 50%	J-00049247
Nominal Particulate Class 1, $\geq$ 0.5 to < 1.0 $\mu$ m	5,600,000 pts/mL	At least 10,000 particles/mL	98.7%	73,000 pts/ml	N/A	$\geq$ 85%	J-00049282
Asbestos	190 MFL	10 <sup>7</sup> to 10 <sup>8</sup> MFL; fibers greater than 10 $\mu$ m in length	>99%	< 1MLF	N/A	$\geq$ 99%	J-0004928
Atrazine	0.0094 mg/L	0.009 mg/L $\pm$ 10%	94.7%	0.00005 mg/L	0.003 mg/L	N/A	J-00049293
Benzene	0.016 mg/L	0.015 mg/L $\pm$ 10%	96.7%	0.005 mg/L	0.005 mg/L	N/A	J-00049300
Carbofuran	0.08 mg/L	0.08 mg/L $\pm$ 10%	98.1%	0.002 mg/L	0.04 mg/L	N/A	J-00049294
Lindane	0.002 mg/L	0.002 mg/L $\pm$ 10%	98.2%	0.00004 mg/L	0.0002 mg/L	N/A	J-00051975
P-Dichlorobenzene	0.22 mg/L	0.225 mg/L $\pm$ 10%	99.8%	0.0005 mg/L	0.075 mg/L	N/A	J-00049298
Toxaphene	0.014 mg/L	0.015 mg/L $\pm$ 10%	93%	0.001 mg/L	0.003 mg/L	N/A	J-00049302
2,4-D	0.213 mg/L	0.210 mg/L $\pm$ 10%	95.2%	0.009 mg/L	0.07 mg/L	N/A	J-00049284
Lead pH @6.5	0.150 mg/L	0.15 mg/L $\pm$ 10%	>99.3%	0.001 mg/L	0.010 mg/L	N/A	J-00051974
Lead pH @8.5	0.150 mg/L	0.15 mg/L $\pm$ 10%	>99.3%	0.001 mg/L	0.010 mg/L	N/A	J-00049277
Mercury @ pH 6.5	0.0059 mg/L	0.006 mg/L $\pm$ 10%	96.1	0.0002 mg/L	0.002 mg/L	N/A	J-00053886
Mercury @ pH 8.5	0.0058 mg/L	0.006 mg/L $\pm$ 10%	90.1	0.0006 mg/L	0.002 mg/L	N/A	J-00051972
Cyst*	120,000 cysts/L	Minimum 50,000 cysts/L	99.99%	<1 cyst/L	N/A	$\geq$ 99.95%	J-00049281

\* Based on the use of Cryptosporidium parvum oocysts.

Application Guidelines/Water Supply Parameters	
Service Flow	0.5 gpm (1.9 lpm)
Water Supply	Potable Water
Water Pressure	20 -120 psi (138 - 827 kPa)
Water Temperature	33°F - 100°F (0.6°C - 38°C)

It is essential that the manufacturer’s recommended installation, maintenance and filter replacement requirements be carried out for the product to perform as advertised.

**NOTE**

- While the testing was performed under standard laboratory conditions, actual performance may vary.

Replacement Cartridge: ADQ36006101

For estimated costs of replacement elements please call USA 1-800-243-0000

CANADA 1-888-LGCANADA (24 hours per day/7 days per week) or visit our website at [www.lg.com](http://www.lg.com)

3M is a trademark of 3M Company.  
NSF is a trademark of NSF International.  
© 2009 3M Company. All rights reserved.

**WARNING**

To reduce the risk associated with choking:

- Do not allow children under 3 years of age to have access to small parts during the installation of this product.

To reduce the risk associated with the ingestion of contaminants:

- Do not use with water that is microbiologically unsafe or of unknown quality without adequate disinfection before or after the system. Systems certified for cyst reduction may be used on disinfected water that may contain filterable cysts. EPA Establishment # 070595-MEX-001

**CAUTION**

To reduce the risk associated with property damage due to water leakage:

- Read and follow. Use Instructions before installation and use of this system.
- Installation and use MUST comply with all state and local plumbing codes.
- Do not install if water pressure exceeds 120 psi (827 kPa). If your water pressure exceeds 80 psi, you must install a pressure limiting valve. Contact a plumbing professional if you are uncertain how to check your water pressure.
- Do not install where water hammer conditions may occur. If water hammer conditions exist you must install a water hammer arrester. Contact a plumbing professional if you uncertain how to check for this condition.
- Do not install on hot water supply lines. The maximum operating water temperature of this filter system is 100°F (37.8°C).
- Protect filter from freezing. Drain filter when temperatures drop below 40°F (4.4°C).
- The disposable filter cartridge MUST be replaced every 6 months, at the rated capacity or if a noticeable reduction in flow rate occurs.
- Protect from freezing, remove filter cartridge when temperatures are expected to drop below 33° F.
- Do not install systems in areas where ambient temperatures may go above 110° F (43.3° C).
- Where a backflow prevention device is installed on a water system, a device for controlling pressure due to thermal expansion must be installed.
- Ensure all tubing and fittings are secure and free of leaks.

Manufactured for LG®Electronics by CUNO Incorporated 400 Research Parkway Meriden, CT 06450 U.S.A Worldwide: 203-237-5541

[www.cuno.com](http://www.cuno.com)

State of California  
 Department of Public Health  
 Water Treatment Device  
 Certificate Number  
 09-2018

Date Issued: December 15, 2009

---

**Trademark/Model Designation**

ADQ36006101-S

**Replacement Elements**

ADQ36006101

**Manufacturer:** Cuno Inc.

---

The water treatment device(s) listed on this certificate have met the testing requirements pursuant to Section 116830 of the Health and Safety Code for the following health related contaminants:

**Microbiological Contaminants and Turbidity**

Cysts

**Inorganic/Radiological Contaminants**

Asbestos

Lead

Mercury

**Organic Contaminants**

2,4-D Reduction

Atrazine

Benzene

Carbofuran

Lindane

p-Dichlorobenzene

Toxaphene

---

**Rated Service Capacity:** 200 gal

**Rated Service Flow:** 0.5 gpm

**Conditions of Certification:**

# SMART DIAGNOSIS

Should you experience any problems with your refrigerator, it has the capability of transmitting data via your telephone to the LG service center. This gives you the capability of speaking directly to our trained specialists. The specialist records the data transmitted from your machine and uses it to analyze the issue, providing a fast and effective diagnosis.

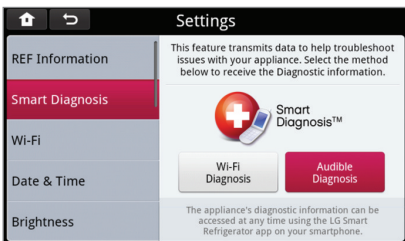
If you experience problems with your refrigerator, call 1-800-243-0000. Only use the Smart Diagnosis feature when instructed to do so by the LG call center agent. The transmission sounds that you will hear are normal and sound similar to a fax machine.

Smart Diagnosis cannot be activated unless your refrigerator is connected to power. If your refrigerator is unable to turn on, then troubleshooting must be done without using Smart Diagnosis.

## Audible Diagnosis (through call center)

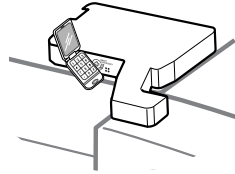
First, call 1-800-243-0000. Only use the Smart Diagnosis feature when instructed to do so by the LG call center agent.

- 1 After you select the Display's 'Settings > Smart Diagnosis' menu and touch the 'Audible Diagnosis' button, Select 'Smart Diagnosis through call center' button.

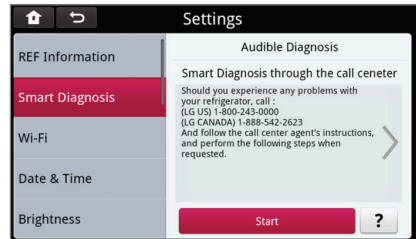


- 2 Open the right refrigerator door.

- 3 Hold the mouthpiece of your phone in front of the speaker that is located on the right hinge of the refrigerator door, when instructed to do so by the call center.



- 4 Touch the Start button while continuing to hold your phone to the speaker.



- 5 Keep the phone in place until the tone transmission has finished. This takes about 17 seconds, and the display will count down the time. Once the countdown is over and the tones have stopped, resume your conversation with the specialist, who will then be able to assist you in using the information transmitted for analysis.

### NOTE

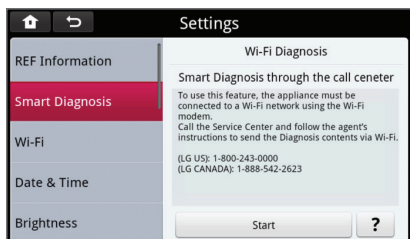
- For best results, do not move the phone while the tones are being transmitted.
- If the call center agent is not able to get an accurate recording of the data, you may be asked to try again.

### NOTE

- Call quality differences by region may affect the function.
- Use the home telephone for better communication performance, resulting in better service.
- Bad call quality may result in poor data transmission from your phone to the machine, which could cause Smart Diagnosis to not work properly.

## Wi-Fi Diagnosis

- 1 After you select the Display's 'Settings > Smart Diagnosis' menu and touch the 'Wi-Fi Diagnosis' button.



- 2 Press the Start button.
- 3 When Start button is pressed, diagnosis data is sent to Service Center, and you can receive detail guide by calling the Service Center.



### NOTE

- To use Wi-Fi diagnosis, Wi-Fi (Settings > Wi-Fi) must be connected and the user must be registered (Settings > Log In).
- Member subscription for user registration can be done in Thing site.

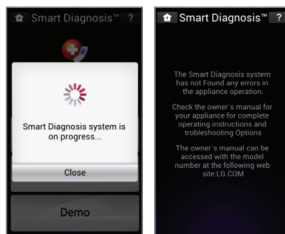
## Self Diagnosis using Smart Phone (Audible, Wi-Fi)

- Run the downloaded refrigerator app, and log in with ID/PW registered in Thing site.
- Select Smart Diagnosis menu.



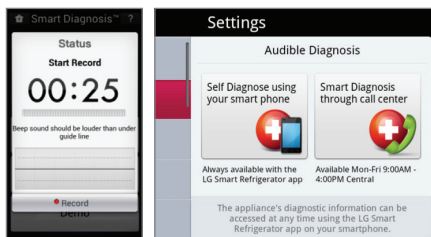
- 1 Wi-Fi Diagnosis in phone app.

- Select 'Smart Diagnosis > Wi-Fi Diagnosis' of App.
- Diagnosis result will be displayed on the smart phone screen.



- 2 Audible Diagnosis in phone app.

- Select 'Smart Diagnosis > Audible Diagnosis' of App.
- Recording screen will be displayed, and standby at this state.



- Select Audible Diagnosis from 'Settings > Smart Diagnosis' of TFF display, and select Self Diagnosis using your smart phone button.
- In No. 2~4 processes TFT display of Audible Diagnosis (through call center), press Start button, and press Record button of the smart phone app.
- When Beep sounds for about 17 seconds and Recording is completed, diagnosis result is displayed on the smart phone screen.



### NOTE

- Search for 'LG Smart Refrigerator' in Android Market or Apple App Store to download smart phone application.
- When you log in with ID/PW registered in Thing site, you can easily use Self Diagnosis through smart phone.



# TROUBLESHOOTING

Review the Troubleshooting section before calling for service; doing so will save you both time and money.

Problem	Possible Causes	Solutions
Refrigerator and Freezer section are not cooling.	The refrigerator control is set to OFF (some models).	Turn the control ON. Refer to the Setting the Controls section for proper temperature settings.
	Refrigerator is in the defrost cycle.	During the defrost cycle, the temperature of each compartment may raise slightly. Wait 30 minutes and confirm the proper temperature has been restored once the defrost cycle has completed.
	Refrigerator was recently installed.	It may take up to 24 hours for each compartment to reach the desired temperature.
	Refrigerator was recently relocated.	If the refrigerator was stored for a long period of time or moved on its side, it is necessary for the refrigerator to stand upright for 24 hours before connecting it to power.
Cooling System runs too much.	Refrigerator is replacing an older model.	Modern refrigerators require more operating time but use less energy due to more efficient technology.
	Refrigerator was recently plugged in or power restored.	The refrigerator will take up to 24 hours to cool completely.
	Door opened often or a large amount of food / hot food was added.	Adding food and opening the door warms the refrigerator, requiring the compressor to run longer in order to cool the refrigerator back down. In order to conserve energy, try to get everything you need out of the refrigerator at once, keep food organized so it is easy to find, and close the door as soon as the food is removed. (Refer to the Food Storage Guide.)
	Doors are not closed completely.	Firmly push the doors shut. If they will not shut all the way, see the Doors will not close completely or pop open section in Parts & Features Troubleshooting.
	Refrigerator is installed in a hot location.	The compressor will run longer under warm conditions. At normal room temperatures (70°F) expect your compressor to run about 40% to 80% of the time. Under warmer conditions, expect it to run even more often. The refrigerator should not be operated above 110°F.
	Condenser / back cover is clogged.	Use a vacuum cleaner with an attachment to clean the condenser cover and vents. Do not remove the panel covering the condenser coil area.
Certain Wi-Fi features are operation slowly	Wi-Fi connection strength is not strong	To improve the Wi-Fi signal strength, it is recommended to purchase a Wi-Fi repeater.

Problem	Possible Causes	Solutions
TFT Display - Wi-Fi disconnection.	Weak signal from the connected AP	Move the AP installed at home closer to the refrigerator, and place the AP at the height close to the height of the refrigerator. If you cannot move the AP, install a repeater to raise the wireless signal strength.
TFT Display - Error popup is occurred.	System Error and No Answer	'Press 'Force' button to close the popup window, and retry the corresponding operation. If it keeps occurring, open the right side door, and turn off and on the TFT Reset switch at the top.
TFT Display - Touch do not work.	Change of touch panel set value by environmental factor	After the screen becomes power saving state(Off state), touch the screen again. If no touch sense occurs again, open the right side door, and turn off and on the TFT Reset switch at the top.
TFT Display - Auto Reset.	System overload	It is turning on again for stabilization of the system, so it is not a disorder. The existing values remain as they are.
Refrigerator or Freezer section is too warm.	Refrigerator was recently installed.	It may take up to 24 hours for each compartment to reach the desired temperature.
	Air vents are blocked.	Rearrange items to allow air to flow throughout the compartment. Refer to the Airflow diagram in the Using Your Refrigerator section.
	Doors are opened often or for long periods of time.	When the doors are opened often or for long periods of time, warm, humid air enters the compartment. This raises the temperature and moisture level within the compartment. To lessen the effect, reduce the frequency and duration of door openings.
	Unit is installed in a hot location.	The refrigerator should not be operated in temperatures above 110°F.
	A large amount of food or hot food was added to either compartment.	Adding food warms the compartment requiring the cooling system to run. Allowing hot food to cool to room temperature before putting it in the refrigerator will reduce this effect.
	Doors not closed correctly.	See the Doors will not close correctly or pop open section in Parts & Features Troubleshooting.
	Temperature control is not set correctly.	If the temperature is too warm, adjust the control one increment at a time and wait for the temperature to stabilize. Refer to the Setting the Controls section for more information.
	Defrost cycle has recently completed.	During the defrost cycle, the temperature of each compartment may raise slightly and condensation may form on the back wall. Wait 30 minutes and confirm the proper temperature has been restored once the defrost cycle has completed.


Problem	Possible Causes	Solutions
Interior moisture buildup.	Doors are opened often or for long periods of time.	When the doors are opened often or for long periods of time, warm, humid air enters the compartment. This raises the temperature and moisture level within the compartment. To lessen the effect, reduce the frequency and duration of door openings.
	Doors not closed correctly.	See the Doors will not close correctly section in the Troubleshooting section.
	Weather is humid.	Humid weather allows additional moisture to enter the compartments when the doors are opened leading to condensation or frost. Maintaining a reasonable level of humidity in the home will help to control the amount of moisture that can enter the compartments.
	Defrost cycle recently completed.	During the defrost cycle, the temperature of each compartment may raise slightly and condensation may form on the back wall. Wait 30 minutes and confirm that the proper temperature has been restored once the defrost cycle has completed.
	Food is not packaged correctly.	Food stored uncovered or unwrapped, and damp containers can lead to moisture accumulation within each compartment. Wipe all containers dry and store food in sealed packaging to prevent condensation and frost.
Food is freezing in the refrigerator compartment.	Food with high water content was placed near an air vent.	Rearrange items with high water content away from air vents.
	Refrigerator temperature control is set incorrectly.	If the temperature is too cold, adjust the control one increment at a time and wait for the temperature to stabilize. Refer to the Setting the Controls section for more information.
	Refrigerator is installed in a cold location.	When the refrigerator is operated in temperature below 41°F (5°C), food can freeze in the refrigerator compartment. The refrigerator should not be operated in temperature below 55°F (13°C).
Frost or ice crystals form on frozen food (outside of package).	Door is opened frequently or for long periods of time.	When the doors are opened often or for long periods of time, warm, humid air enters the compartment. This raises the temperature and moisture level within the compartment. Increased moisture will lead to frost and condensation. To lessen the effect, reduce the frequency and duration of door openings.
	Door is not closing properly.	Refer to the Doors will not close correctly or pop open section in the Troubleshooting section.
Refrigerator or Freezer section is too cold.	Incorrect temperature control settings.	If the temperature is too cold, adjust the control one increment at a time and wait for the temperature to stabilize. Refer to the Setting the Controls section for more information.

Problem	Possible Causes	Solutions
Frost or ice crystals on frozen food (inside of sealed package).	Condensation from food with a high water content has frozen inside of the food package.	This is normal for food items with a high water content.
	Food has been left in the freezer for a long period of time.	Do not store food items with high water content in the freezer for a long period of time.
Icemaker is not making enough ice.	Demand exceeds ice storage capacity.	The icemaker will produce approximately 70~210 cubes in a 24 hour period.
	House water supply is not connected, valve is not turned on fully, or valve is clogged.	Connect the refrigerator to a cold water supply with adequate pressure and turn the water shutoff valve fully open. If the problem persists, it may be necessary to contact a plumber.
	Water filter has been exhausted.	It is recommended that you replace the water filter: <ul style="list-style-type: none"> <li>• Approximately every six months.</li> <li>• When the water filter indicator turns on.</li> <li>• When the water dispenser output decreases.</li> <li>• When the ice cubes are smaller than normal.</li> </ul>
	Low house water supply pressure.	The water pressure must be between 20 and 120 psi on models without a water filter and between 40 and 120 psi on models with a water filter. If the problem persists, it may be necessary to contact a plumber.
	Reverse Osmosis filtration system is used.	Reverse osmosis filtration systems can reduce the water pressure below the minimum amount and result in icemaker issues. (Refer to Water Pressure section.)
	Tubing connecting refrigerator to house supply valve is kinked.	The tubing can kink when the refrigerator is moved during installation or cleaning resulting in reduced water flow. Straighten or repair the water supply line and arrange it to prevent future kinks.

Problem	Possible Causes	Solutions
Icemaker is not making enough ice (continued).	Doors are opened often or for long periods of time.	If the doors of the unit are opened often, ambient air will warm the refrigerator which will prevent the unit from maintaining the set temperature. Lowering the refrigerator temperature can help, as well as not opening the doors as frequently.
	Doors are not closed completely.	If the doors are not properly closed, ice production will be affected. See the Doors will not close completely or pop open section in Parts & Features Troubleshooting for more information.
	The temperature setting for the freezer is too warm.	The recommended temperature for the freezer compartment for normal ice production is 0°F. If the freezer temperature is warmer, ice production will be affected.
Dispensing water slowly.	Water filter has been exhausted.	<p>It is recommended that you replace the water filter:</p> <ul style="list-style-type: none"> <li>• Approximately every six months.</li> <li>• When the water filter indicator turns on.</li> <li>• When the water dispenser output decreases.</li> <li>• When the ice cubes are smaller than normal.</li> </ul>
	Reverse osmosis filtration system is used.	<p>Reverse osmosis filtration systems can reduce the water pressure below the minimum amount and result in icemaker issues.</p> <p>If the problem persists, it may be necessary to contact a plumber.</p>
	Low house water supply pressure.	<p>The water pressure must be between 20 and 120 psi on models without a water filter and between 40 and 120 psi on models with a water filter.</p> <p>If the problem persists, it may be necessary to contact a plumber.</p>

Problem	Possible Causes	Solutions
Not dispensing ice.	Doors are not closed completely.	Ice will not dispense if any of the refrigerator doors are left open.
	Infrequent use of the dispenser.	Infrequent use of the ice dispenser will cause the cubes to stick together over time, which will prevent them from properly dispensing. Check the ice bin for ice cubes clumping/sticking together. If they are, break up the ice cubes to allow for proper operation.
	The delivery chute is clogged with frost or ice fragments.	Eliminate the frost or ice fragments by removing the ice bin and clearing the chute with a plastic utensil. Dispensing cubed ice can also help prevent frost or ice fragment buildup.
	The dispenser display is locked.	Press and hold the Lock button for three seconds to unlock the control panel and dispenser.
	Ice bin is empty.	It may take up to 24 hours for each compartment to reach the desired temperature and for the icemaker to begin making ice. Make sure that the shutoff (arm/sensor) is not obstructed.  Once the ice supply in the bin has been completely exhausted, it may take up to 90 minutes before additional ice is available, and approximately 24 hours to completely refill the bin.
Icemaker is not making ice.	Refrigerator was recently installed or icemaker recently connected.	It may take up to 24 hours for each compartment to reach the desired temperature and for the icemaker to begin making ice.
	Icemaker not turned on.	Locate the icemaker ON/OFF switch and confirm that it is in the ON (I) position.
	The ice detecting sensor is obstructed.	Foreign substances or frost on the ice-detecting sensor can interrupt ice production. Make sure that the sensor area is clean at all times for proper operation.
	The refrigerator is not connected to a water supply or the supply shutoff valve is not turned on.	Connect refrigerator to the water supply and turn the water shutoff valve fully open.
	Icemaker shutoff (arm or sensor) obstructed.	If your icemaker is equipped with an ice shutoff arm, make sure that the arm moves freely. If your icemaker is equipped with the electronic ice shutoff sensor, make sure that there is a clear path between the two sensors.
	Reverse osmosis water filtration system is connected to your cold water supply.	Reverse osmosis filtration systems can reduce the water pressure below the minimum amount and result in icemaker issues. (Refer to the Water Pressure section.)

Problem	Possible Causes	Solutions
Not dispensing water.	New installation or water line recently connected.	Dispense 2.5 gallons of water (flush for approximately 5 minutes) to remove trapped air and contaminants from the system. Do not dispense the entire 2.5 gallon amount continuously. Depress and release the dispenser pad for cycles of 30 seconds ON and 60 seconds OFF.
	The dispenser panel is locked.	Press and hold the Lock button for three seconds to unlock the control panel and dispenser.
	The dispenser is not set for water dispensing.	The dispenser can be set for ice or water. Make certain that the control panel is set for the proper operation. Press the Water button on the control panel to dispense water.
	Refrigerator or freezer doors are not closed properly.	Water will not dispense if any of the refrigerator doors are left open.
	Water filter has been recently removed or replaced.	After the water filter is replaced, dispense 2.5 gallons of water (flush for approximately 5 minutes) to remove trapped air and contaminants from the system. Do not dispense the entire 2.5 gallon amount continuously. Depress and release the dispenser pad for cycles of 30 seconds ON and 60 seconds OFF.
	Tubing connecting refrigerator to house supply valve is kinked.	The tubing can kink when the refrigerator is moved during installation or cleaning resulting in reduced water flow. Straighten or repair the water supply line and arrange it to prevent future kinks.
	The house water supply is not connected, the valve is not turned on fully, or the valve is clogged.	Connect refrigerator to the water supply and turn the water shutoff valve fully open.  If the problem persists, it may be necessary to contact a plumber.

Problem	Possible Causes	Solutions
Ice has bad taste or odor.	Water supply contains minerals such as sulfur.	A water filter may need to be installed to eliminate taste and odor problems.  NOTE: In some cases, a filter may not help. It may not be possible to remove all minerals / odor / taste in all water supplies.
	Icemaker was recently installed.	Discard the first few batches of ice to avoid discolored or bad tasting ice.
	Ice has been stored for too long.	Ice that has been stored for too long will shrink, become cloudy, and may develop a stale taste. Throw away old ice and make a new supply.
	The food has not been stored properly in either compartment.	Rewrap the food. Odors may migrate to the ice if food is not wrapped properly.
	The interior of the refrigerator needs to be cleaned.	See the Care and Cleaning section for more information.
	The ice storage bin needs to be cleaned.	Empty and wash the bin (discard old cubes). Make sure that the bin is completely dry before reinstalling it.
Dispensing warm water.	Refrigerator was recently installed.	Allow 24 hours after installation for the water storage tank to cool completely.
	The water dispenser has been used recently and the storage tank was exhausted.	Depending on your specific model, the water storage capacity will range from approximately 20 to 30 oz.
	Dispenser has not been used for several hours.	If the dispenser has not been used for several hours, the first glass dispensed may be warm. Discard the first 10 oz.
	Refrigerator is connected to the hot water supply.	Make sure that the refrigerator is connected to a cold water pipe.   WARNING: Connecting the refrigerator to a hot water line may damage the icemaker.
Water has bad taste or odor.	Water supply contains minerals such as sulfur.	A water filter may need to be installed to eliminate taste and odor problems.
	Water filter has been exhausted.	It is recommended that you replace the water filter: <ul style="list-style-type: none"> <li>• Approximately every 6 months.</li> <li>• When the water filter indicator turns on.</li> <li>• When the water dispenser output decreases.</li> <li>• When the ice cubes are smaller than normal.</li> </ul>
	Refrigerator was recently installed.	Dispense 2.5 gallons of water (flush for approximately 5 minutes) to remove trapped air and contaminants from the system. Do not dispense the entire 2.5 gallon amount continuously. Depress and release the dispenser pad for cycles of 30 seconds ON and 60 seconds OFF.



Problem	Possible Causes	Solutions
Icemaker is making too much ice.	Icemaker shutoff (arm/sensor) is obstructed.	Empty the ice bin. If your icemaker is equipped with an ice shutoff arm, make sure that the arm moves freely. If your icemaker is equipped with the electronic ice shutoff sensor, make sure that there is a clear path between the two sensors. Reinstall the ice bin and wait 24 hours to confirm proper operation.
Clicking	The defrost control will click when the automatic defrost cycle begins and ends. The thermostat control (or refrigerator control on some models) will also click when cycling on and off.	Normal Operation
Rattling	Rattling noises may come from the flow of refrigerant, the water line on the back of the unit, or items stored on top of or around the refrigerator.	Normal Operation
	Refrigerator is not resting solidly on the floor.	Floor is weak or uneven or leveling legs need to be adjusted. See the Door Alignment section.
	Refrigerator with linear compressor was jarred while running.	Normal Operation
Whooshing	Evaporator fan motor is circulating air through the refrigerator and freezer compartments.	Normal Operation
	Air is being forced over the condenser by the condenser fan.	Normal Operation
Gurgling	Refrigerant flowing through the cooling system.	Normal Operation
Popping	Contraction and expansion of the inside walls due to changes in temperature.	Normal Operation
Sizzling	Water dripping on the defrost heater during a defrost cycle.	Normal Operation
Vibrating	If the side or back of the refrigerator is touching a cabinet or wall, some of the normal vibrations may make an audible sound.	To eliminate the noise, make sure that the sides and back cannot vibrate against any wall or cabinet.
Dripping	Water running into the drain pan during the defrost cycle.	Normal Operation

Problem	Possible Causes	Solutions
Pulsating or High-Pitched Sound	Your refrigerator is designed to run more efficiently to keep your food items at the desired temperature. The high efficiency compressor may cause your new refrigerator to run longer than your old one, but it is still more energy efficient than previous models. While the refrigerator is running, it is normal to hear a pulsating or high-pitched sound.	Normal Operation
Doors will not close correctly or pop open.	Food packages are blocking the door open.	Rearrange food containers to clear the door and door shelves.
	Ice bin, crisper cover, pans, shelves, door bins, or baskets are out of position.	Push bins all the way in and put crisper cover, pans, shelves and baskets into their correct positions. See the Using Your Refrigerator section for more information.
	The doors were removed during product installation and not properly replaced.	Remove and replace the doors according to the Removing and Replacing Refrigerator Handles and Doors section.
	Refrigerator is not leveled properly.	See Door Alignment in the Refrigeration Installation section to level refrigerator.
Doors are difficult to open.	The gaskets are dirty or sticky.	Clean the gaskets and the surfaces that they touch. Rub a thin coat of appliance polish or kitchen wax on the gaskets after cleaning.
	Door was recently closed.	When you open the door, warmer air enters the refrigerator. As the warm air cools, it can create a vacuum. If the door is hard to open, wait one minute to allow the air pressure to equalize, then see if it opens more easily.
Refrigerator wobbles or seems unstable.	Leveling legs are not adjusted properly.	Refer to the Leveling and Door Alignment section.
	Floor is not level.	It may be necessary to add shims under the leveling legs or rollers to complete installation.
Lights do not work.	LED interior lighting failure.	The refrigerator compartment lamp is LED interior lighting, and service should be performed by a qualified technician.
Refrigerator has an unusual odor.	The Air Filter may need to be set to the MAX setting or replaced.	Set the Air Filter to the MAX setting. If the odor does not go away within 24 hours, the filter may need to be replaced. See the Replacing the Air Filter section for replacement instructions.
The interior of the refrigerator is covered with dust or soot.	The refrigerator is located near a fire source, such as a fireplace, chimney or candle.	Make sure that the refrigerator is not located near a fire source, such as a fireplace, chimney or candle.

## WARRANTY (USA)

Should your LG Refrigerator ("Product") fail due to a defect in materials or workmanship under normal home use, during the warranty period set forth below, LG will at its option repair or replace the product. This limited warranty is valid only to the original retail purchaser of the product and applies only when purchased and used within the United States including U.S. Territories. Proof of original retail purchase is required to obtain warranty service under this limited warranty.

WARRANTY PERIOD			
Refrigerator	Sealed System (Condenser, Dryer, Connecting Tube, Refrigerant and Evaporator)		Linear Compressor
One (1) year from the date of original retail purchase	One (1) year from the date of original retail purchase	Seven (7) years from the date of original retail purchase	Ten (10) years from the date of original retail purchase
Parts and Labor (internal/functional parts only)	Parts and Labor	Parts only (Consumer will be charged for labor)	Part only (Consumer will be charged for labor)

Noises associated with normal operation and failure to follow instructions found in the use and care and installation guides or operating the unit in an unsuitable environment will not be covered under this warranty.

- ▶ Replacement products and parts are warranted for the remaining portion of the original warranty period or ninety (90) days, whichever is greater.
- ▶ Replacement products and parts may be new or remanufactured.

**THIS WARRANTY IS IN LIEU OF ANY OTHER WARRANTY, EXPRESS OR IMPLIED, INCLUDING WITHOUT LIMITATION, ANY WARRANTY OF MERCHANTABILITY OR FITNESS FOR A PARTICULAR PURPOSE. TO THE EXTENT ANY IMPLIED WARRANTY IS REQUIRED BY LAW, IT IS LIMITED IN DURATION TO THE EXPRESS WARRANTY PERIOD ABOVE. NEITHER THE MANUFACTURER NOR ITS U.S. DISTRIBUTOR SHALL BE LIABLE FOR ANY INCIDENTAL, CONSEQUENTIAL, INDIRECT, SPECIAL, OR PUNITIVE DAMAGES OF ANY NATURE, INCLUDING WITHOUT LIMITATION, LOST REVENUES OR PROFITS, OR ANY OTHER DAMAGE WHETHER BASED IN CONTRACT, TORT, OR OTHERWISE.** Some states do not allow the exclusion or limitation of incidental or consequential damages or limitations on how long an implied warranty lasts, so the above exclusion or limitation may not apply to you. This warranty gives you specific legal rights and you may also have other rights that vary from state to state.

**THIS LIMITED WARRANTY DOES NOT COVER:**

1. Service trips to deliver, pick up, install, or repair the product; instruct the customer on operation of the product; repair or replace fuses or correct wiring or plumbing, or correction of unauthorized repairs/installation.
2. Failure of product to perform during power failures and interruptions or inadequate electrical service.
3. Damage caused by leaky or broken water pipes, frozen water pipes, restricted drain lines, inadequate or interrupted water supply or inadequate supply of air.
4. Damage resulting from operating the product in a corrosive atmosphere or contrary to the instructions outlined in the product owner's manual.
5. Damage to the product caused by accidents, pests and vermin, lightning, wind, fire, floods, or acts of God.
6. Damage resulting from misuse, abuse, improper installation, repair, or maintenance. Improper repair includes use of parts not approved or specified by LG.
7. Damage or failure caused by unauthorized modification or alteration, or if it is used for other than the intended purpose, or any water leakage where the unit was not properly installed.
8. Damage or failure caused by incorrect electrical current, voltage, or plumbing codes, commercial or industrial use, or use of accessories, components, or consumable cleaning products that are not approved by LG.
9. Damage caused by transportation and handling, including scratches, dents, chips, and/or other damage to the finish of your product, unless such damage results from defects in materials or workmanship and is reported within one (1) week of delivery (Call: 1-800-243-0000).
10. Damage or missing items to any display, open box, discounted, or refurbished product.
11. Products with original serial numbers that have been removed, altered, or can not be readily determined. Model and Serial numbers, along with original retail sales receipt, are required for warranty validation.
12. Increases in utility costs and additional utility expenses.
13. Replacement of light bulbs, filters, or any consumable parts.
14. Repairs when your product is used in other than normal and usual household use (e.g. commercial use, offices, and recreational facilities) or contrary to the instructions outlined in the product owner's manual.
15. Costs associated with removal of your product from your home for repairs.
16. The removal and reinstallation of the product if it is installed in an inaccessible location or is not installed in accordance with published installation instructions, including LG's owner's and installation manuals.
17. Shelves, door bins, drawers, handles, accessories, and other parts besides those that were originally included with this particular model.

**The cost of repair or replacement under these excluded circumstances shall be borne by the consumer.**

<b>For complete warranty details and customer assistance, please call or visit our website:</b>
Call 1-800-243-0000 (24 hours a day, 365 days a year) and select the appropriate option from the menu, or visit our website at <a href="http://www.lg.com">http://www.lg.com</a> Or by mail: LG Customer Information Center: P. O. Box 240007, 201 James Record Road Huntsville, Alabama 35813 ATTN: CIC
Write your warranty information below: _____ Product Registration Information: _____ Model: _____ Serial Number: _____ Date of Purchase: _____

## WARRANTY (Canada)

**WARRANTY:** Should your LG Refrigerator (“Product”) fail due to a defect in material or workmanship under normal home use during the warranty period set forth below, LG Canada will at its option repair or replace the Product upon receipt of proof of original retail purchase. This warranty is valid only to the original retail purchaser of the product and applies only to a Product distributed in Canada by LG Canada or an authorized Canadian distributor thereof. The warranty only applies to Products located and used within Canada.

WARRANTY PERIOD: (Note: If the original date of purchase can not be verified, the warranty will begin sixty (60) days from the date of manufacture)			
Refrigerator/ Freezer	Sealed System (Condenser, Dryer, Connecting Tube, Refrigerant and Evaporator)		Linear Compressor
One (1) year from the date of original retail purchase	One (1) year from the date of original retail purchase	Seven (7) years from the date of original retail purchase	Ten (10) years from the date of original retail purchase
Parts and Labor (internal/functional parts only)	Parts and Labor	Parts only (Consumer will be charged for labor)	Part only (Consumer will be charged for labor)

Noises associated with normal operation and failure to follow instructions found in the use and care and installation guides or operating the unit in an unsuitable environment will not be covered under this warranty.

- ▶ Replacement products and parts are warranted for the remaining portion of the original warranty period or ninety (90) days, whichever is greater.
- ▶ Replacement products and parts may be new or remanufactured.
- ▶ LG Authorized Service Center warranties their repair work for thirty (30) days.

**LG CANADA’S SOLE LIABILITY IS LIMITED TO THE WARRANTY SET OUT ABOVE. EXCEPT AS EXPRESSLY PROVIDED ABOVE, LG CANADA MAKES NO AND HEREBY DISCLAIMS ALL OTHER WARRANTIES AND CONDITIONS RESPECTING THE PRODUCT, WHETHER EXPRESS OR IMPLIED, INCLUDING, BUT NOT LIMITED TO, ANY IMPLIED WARRANTY OR CONDITION OF MERCHANTABILITY OR FITNESS FOR A PARTICULAR PURPOSE, AND NO REPRESENTATIONS SHALL BE BINDING ON LG CANADA. LG CANADA DOES NOT AUTHORIZE ANY PERSON TO CREATE OR ASSUME FOR IT ANY OTHER WARRANTY OBLIGATION OR LIABILITY IN CONNECTION WITH THE PRODUCT. TO THE EXTENT THAT ANY WARRANTY OR CONDITION IS IMPLIED BY LAW, IT IS LIMITED TO THE EXPRESS WARRANTY PERIOD ABOVE. LG CANADA, THE MANUFACTURER OR DISTRIBUTOR SHALL NOT BE LIABLE FOR ANY INCIDENTAL, CONSEQUENTIAL, SPECIAL, DIRECT OR INDIRECT DAMAGES, LOSS OF GOODWILL, LOST PROFITS, PUNITIVE OR EXEMPLARY DAMAGES OR ANY OTHER DAMAGE, WHETHER ARISING DIRECTLY OR INDIRECTLY FROM ANY CONTRACTUAL BREACH, FUNDAMENTAL OR OTHERWISE, OR FROM ANY ACTS OR OMISSIONS, TORT, OR OTHERWISE.** This warranty gives you specific legal rights. You may have other rights which may vary from province to province depending on applicable provincial laws. Any term of this warranty that negates or varies any implied condition or warranty under provincial law is severable where it conflicts with provincial law without affecting the remainder of this warranty’s terms.

**THIS LIMITED WARRANTY DOES NOT COVER:**

1. Service trips to deliver, pick up, or install the product; instructing a customer on operation of the product; repair or replacement of fuses or correction of wiring or plumbing, or correction of unauthorized repairs/installation.
2. Failure of the product to perform during power failures and interruptions or inadequate electrical service.
3. Damage caused by leaky or broken water pipes, frozen water pipes, restricted drain lines, inadequate or interrupted water supply or inadequate supply of air.
4. Damage resulting from operating the Product in a corrosive atmosphere or contrary to the instructions outlined in the Product owner's manual.
5. Damage to the Product caused by accidents, pests and vermin, lightning, wind, fire, floods, or acts of God.
6. Damage resulting from the misuse, abuse, improper installation, repair, or maintenance of the Product. Improper repair includes use of parts not approved or specified by LG Canada.
7. Damage or product failure caused by unauthorized modification or alteration, or use for other than its intended purpose, or resulting from any water leakage due to improper installation.
8. Damage or Product failure caused by incorrect electrical current, voltage, or plumbing codes, commercial or industrial use, or use of accessories, components, or cleaning products that are not approved by LG Canada.
9. Damage caused by transportation and handling, including scratches, dents, chips, and/or other damage to the finish of your product, unless such damage results from defects in materials or workmanship and is reported within one (1) week of delivery.
10. Damage or missing items to any display, open box, discounted, or refurbished Product.
11. Products with original serial numbers that have been removed, altered, or cannot be readily determined. Model and Serial numbers, along with original retail sales receipt, are required for warranty validation.
12. Increases in utility costs and additional utility expenses.
13. Replacement of light bulbs, filters, or any consumable parts.
14. Repairs when your Product is used in other than normal and usual household use (including, without limitation, commercial use, in offices or recreational facilities) or contrary to the instructions outlined in the Product owner's manual.
15. Costs associated with removal of the Product from your home for repairs.
16. The removal and reinstallation of the Product if it is installed in an inaccessible location or is not installed in accordance with published installation instructions, including the Product owner's and installation manuals.
17. Shelves, door bins, drawers, handles, and accessories to the Product. Also excluded are parts besides those that were originally included with the Product.

**All costs associated with the above excluded circumstances shall be borne by the consumer.**

**For complete warranty details and customer assistance, please call or visit our website:**

Call 1-888-542-2623 (24 hours a day, 365 days a year) and select the appropriate option from the menu, or visit our website at <http://www.lg.com>

Write your warranty information below: \_\_\_\_\_  
 Product Registration Information: \_\_\_\_\_  
 Model: \_\_\_\_\_  
 Serial Number: \_\_\_\_\_  
 Date of Purchase: \_\_\_\_\_

## Open Source Software Notice

To obtain the source code under GPL, LGPL, MPL and other open source licenses, that is contained in this product, please visit <http://opensource.lge.com> .

In addition to the source code, all referred license terms, warranty disclaimers and copyright notices are available for download.

LG Electronics will also provide open source code to you on CD-ROM for a charge covering the cost of performing such distribution (such as the cost of media, shipping and handling) upon email request to [opensource@lge.com](mailto:opensource@lge.com). This offer is valid for three (3) years from the date on which you purchased the product.







### LG Customer Information Center

For inquires or comments,  
visit [www.lg.com](http://www.lg.com) or call;

**1-800-243-0000** USA, Consumer User

**1-888-865-3026** USA, Commercial User

**1-888-542-2623** CANADA

**Register your product Online!**

[www.lg.com](http://www.lg.com)