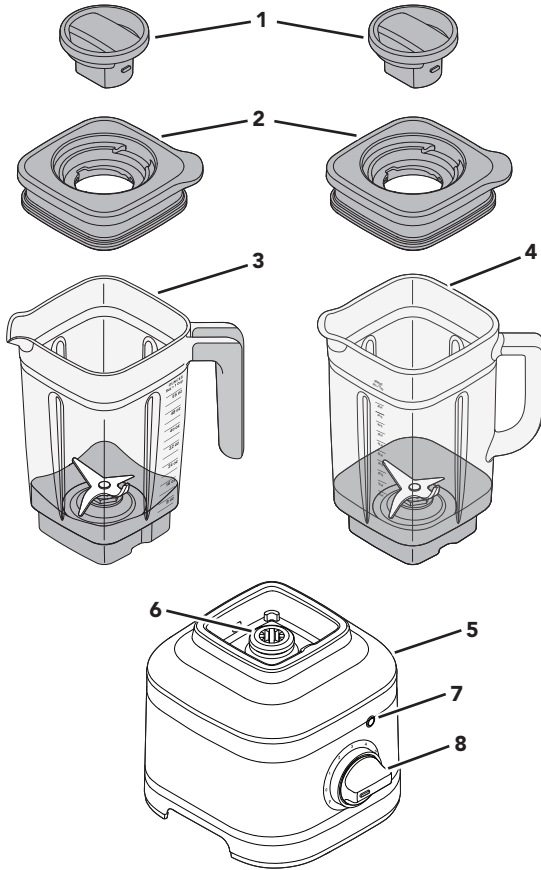


KitchenAid

Liquidificador K400
*KSB4027**, KUA35A**



PARTS AND FEATURES



- | | | | |
|---|-----------------------------|---|---------------------------------------|
| 1 | Lid Center Cap | 5 | Base |
| 2 | Lid with Vent Well | 6 | Interlock |
| 3 | Jar (1.6 L capacity) | 7 | START/STOP Button (▶ ⊗) with LED Ring |
| 4 | Glass Jar* (1.4 L capacity) | 8 | Control Dial |

*Accessories only included with Glass Jar Blender models.

PRODUCT SAFETY

Your safety and the safety of others are very important.

We have provided many important safety messages in this manual and on your appliance. Always read and obey all safety messages.



This is the safety alert symbol.

This symbol alerts you to potential hazards that can kill or hurt you and others.

All safety messages will follow the safety alert symbol and either the word “DANGER” or “WARNING.” These words mean:

⚠ DANGER

You can be killed or seriously injured if you don't immediately follow instructions.

⚠ WARNING

You can be killed or seriously injured if you don't follow instructions.

All safety messages will tell you what the potential hazard is, tell you how to reduce the chance of injury, and tell you what can happen if the instructions are not followed.

IMPORTANT SAFEGUARDS

When using electrical appliances, basic safety precautions should always be followed, including the following:

1. Read all instructions. Misuse of appliance may result in personal injury.
2. To protect against risk of electrical shock do not put the Stand Blender Base in water or other liquid.
3. This appliance is not intended for use by persons (including children) with reduced physical, sensory or mental capabilities, or lack of experience and knowledge, unless they have been given supervision or instruction concerning use of the appliance by a person responsible for their safety.
4. Children should be supervised to ensure that they do not play with the appliance.
5. Turn the appliance OFF, then unplug from the outlet when not in use, before assembling or disassembling parts and before cleaning. To unplug, grasp the plug and pull from the outlet. Never pull from the power cord.
6. Avoid contacting moving parts.
7. Do not operate any appliance with a damaged cord or plug or after the appliance malfunctions, or is dropped or damaged in any manner. Contact the manufacturer at their customer service telephone number for information on examination, repair or adjustment.
8. Do not use outdoors.
9. Do not let cord hang over edge of table or counter.
10. Keep hands and utensils out of container while blending to reduce the risk of severe injury to persons or damage to the Blender. A scraper may be used but must be used only when the Blender is not running.
11. Blades are sharp. Care should be taken when handling the sharp cutting blades, emptying the jar and during cleaning.
12. Be careful if hot liquid is poured into the Blender as it can be ejected out of the appliance due to sudden steaming.

PRODUCT SAFETY

13. If the supply cord is damaged, it must be replaced by the manufacturer, its service agent or similarly qualified persons in order to avoid a hazard.
14. Refer to the “Care and Cleaning” section for instructions on cleaning the surfaces in contact with food.
15. Always operate the Blender with cover in place.
16. When blending hot liquids or ingredients, Lid Centre Cap shall remain in place over the lid opening. Always start on lowest speed and slowly ramp to desired speed when blending hot liquids or ingredients.
17. The use of attachments, including canning jars, not recommended or sold by the manufacturer may cause a risk of injury to persons.
18. This appliance is intended to be used in household and similar applications such as:
 - staff kitchen areas in shops, offices, or other working environments;
 - farmhouses;
 - by clients in hotels, motels and other residential type environments;
 - bed and breakfast type environments.

SAVE THESE INSTRUCTIONS

PRODUCT SAFETY

ELECTRICAL REQUIREMENTS

⚠ WARNING



Electrical Shock Hazard

Plug into an earthed outlet.

Do not remove earth prong.

Do not use an adapter.

Do not use an extension cord.

Failure to follow these instructions can result in death, fire, or electrical shock.

Models: KUA35AVANA, KUA35APANA

Voltage: 127 V~

Frequency: 60 Hz

Wattage: 1200 W

Model: KUA35AVBNA

Voltage: 220 V~

Frequency: 60 Hz

Wattage: 1200 W

NOTE: If the plug does not fit in the outlet, contact a qualified electrician. Do not modify the plug in any way. Do not use an adapter.

Do not use an extension cord. If the power supply cord is too short, have a qualified electrician or serviceman install an outlet near the appliance.

The power rating of your Stand Blender is printed on the serial plate.

The maximum rating is based on the attachment that draws the greatest load (power). Other recommended attachments may draw significantly less power.


ELECTRICAL EQUIPMENT WASTE DISPOSAL

Scrapping the product

- This appliance is marked in compliance with European Directive 2012/19/EU, Waste Electrical and Electronic Equipment (WEEE).

- By ensuring this product is disposed of correctly, you will help prevent potential negative consequences for the environment and human health, which could otherwise be caused by inappropriate waste handling of this product.



- The symbol  on the product or on the accompanying documentation indicates that it should not be treated as domestic waste but must be taken to an appropriate collection centre for the recycling of electrical and electronic equipment.


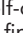
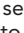
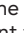
For more detailed information about treatment, recovery and recycling of this product, please contact your local city office, your household waste disposal service or the shop where you purchased the product.




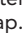
MOTOR HORSEPOWER

Motor horsepower for the Blender motor was measured using a dynamometer, a machine that laboratories routinely use to measure the mechanical power of motors. Our 1.5 peak horsepower (HP) motor reference reflects the horsepower output of the motor itself and not the Blender's horsepower output in the Blender Jar. As with any Blender, the power output in the Jar is not the same as the horsepower of the motor itself.

GET STARTED

BLENDER FUNCTION GUIDE

It features variable speeds (from **1** to **5**) and Pulse (**P**) function to customize blending. Also, pre-programmed recipe settings like, Ice Crush () , Icy Drink () and, Smoothie () are designed to deliver optimal results. Use the self-cleaning cycle () after blending for easy clean up. We encourage you to experiment to find the best speed for your favorite recipes.

Setting	Description	Blending Time (min:sec)	Suggested Items to Blend
Pulse P	Allows precise control of the duration and frequency of blending.	Manual	Salsa, crumb topping, chopped nuts, fruits or vegetables & more.
Variable speeds 1 - 5	Manual speeds offer ultimate control of the Blender.	3:00	Fruits, Soups, Sauces, Doughs, Vegetables, Butters, Nuts, Dips, Frozen desserts, Purees.
Ice Crush 	The Blender runs at optimal speed to crush ice.	00:30	To crush and chop ice without adding any liquid ingredients.
Icy Drink 	Gradually ramp up to full power to blend hard foods.	00:30	Ice, whole fruits or vegetables, or frozen fruits. Use for drinks as Margaritas, Daiquiris, and blended ice coffee drinks.
Smoothie 	The Blender will operate at the high speed to make puree of items or ingredients.	00:45	Fruits, vegetables, ice cream and yogurt into thick smoothie, blended drinks and milkshakes, etc.
Clean 	Quick pulses of power and high speeds work to clean the Blender Jar.	00:13	Half of the Jar filled with warm water and 1-2 drops of dish soap.

BLENDER ACCESSORY GUIDE

Accessories	Capacity	Speed	Suggested Items to Blend Chart
Blender Jar	1.6 L	All Speeds, Pulse, and Preset recipes	Full recipe smoothie, icy drinks, shakes / malts, dips, spreads and more.
Glass Blender Jar	1.4 L		

USING THE BLENDER

First, clean all parts and accessories (see “Care and Cleaning” section).
 Be sure the countertop beneath the Blender and surrounding areas are dry and clean.

IMPORTANT: When moving your Blender, always support/lift from the Blender Base.
 Base will become disengaged from Jar if carried by Blender Jar or Blender Jar handle only.

⚠ WARNING

Electrical Shock Hazard



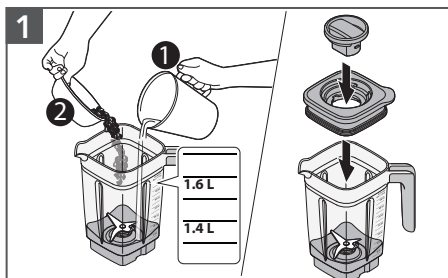
Plug into an earthed outlet.

Do not remove an earth prong.

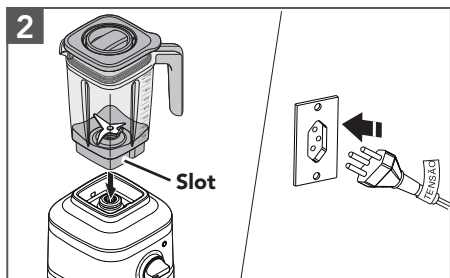
Do not use an adapter.

Do not use an extension cord.

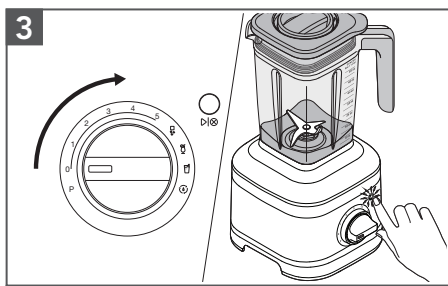
Failure to follow these instructions can result in death, fire, or electrical shock.



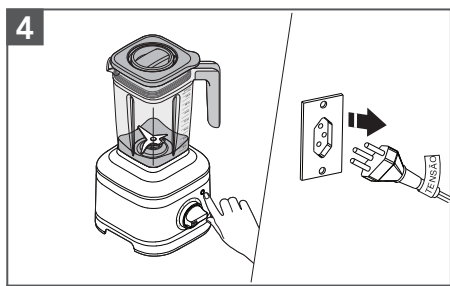
1 Add ingredients into Jar (max. 1.6 L or max. 1.4 L for Glass Jar). Secure the Lid and Lid Center Cap.



2 Place and align the Jar with the Slot to fit inside the jar pad, facing Jar handle towards Control Dial. Plug the Blender into earthed outlet.



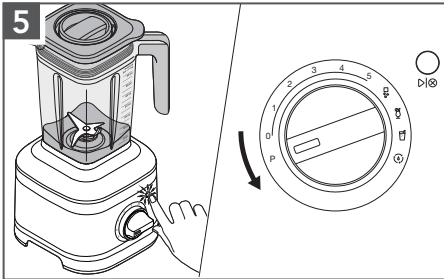
3 Turn Dial from (O) to desired speed or preset recipe program. Press (D/STOP) to START. See “Blender Function Guide” for more details.



4 When finished, press (D/STOP) to STOP. Unplug before removing the Blender Jar.

NOTE: For variable speeds (from 1 to 5), the Blender will stop automatically after 3 minutes of run time. For preset recipe programs, the Blender will automatically stop blending once the cycle is complete.

USING THE BLENDER



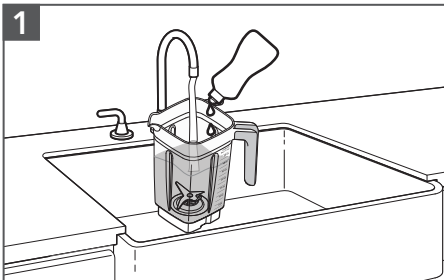
Pulse mode: Press (D). Turn and hold the Control Dial from (O) to (P) as per desired interval of time. When finished, release the Dial to STOP.

NOTE: If blending hot liquids and ingredients, start on a low speed and then ramp up to the desired speed. Use variable speed and run for 1-2 minutes.

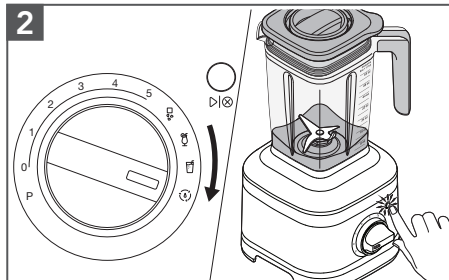
NOTE: Blender will not run if jar is not on Base.

IMPORTANT: Allow the Blender to fully stop before removing the Lid, Jar, or pouring out blended ingredients.

CARE AND CLEANING



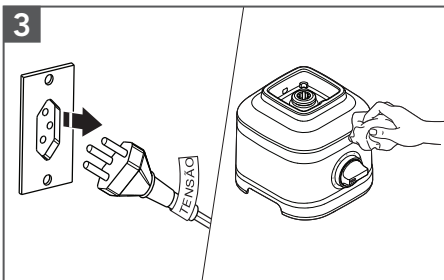
Fill half of the Jar with warm water and add 1 or 2 drops of dish-washing liquid. Place the Jar on the Base. Secure the Lid and Lid Center Cap.



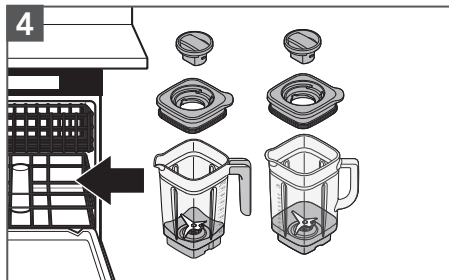
Turn from (O) to (I). Press (D) button to START.

Remove and empty contents and rinse with warm water and dry thoroughly.

NOTE: Do not immerse the Blender Base or cord in water. Do not use abrasive cleansers or scouring pads to avoid scratching.



Unplug before cleaning. Wipe the Base and the Power Cord with a warm, damp cloth and dry with a soft cloth.



Dishwasher-safe, top rack only: Lid Center Caps and Lids with Vent Well.

Blender Jar and Glass Jar can be washed in the bottom rack.

TROUBLESHOOTING GUIDE

WARNING

Electrical Shock Hazard



Plug into an earthed outlet.

Do not remove an earth prong.

Do not use an adapter.

Do not use an extension cord.

Failure to follow these instructions can result in death, fire, or electrical shock.

Problem	Solution
If Blender fails to start:	Check to see if the Blender is securely plugged into an earthed electrical outlet.
	If you have a Circuit Breaker Box, make sure the circuit is closed.
If Blender stops after 3 minutes:	It's a part of the Blender operation to ensure lasting durability. Turn the Control Dial to (O) and repeat the process until desired consistency.
If Blender stops while blending:	When overloaded or jammed, it will automatically shut off to prevent motor damage. Unplug the Blender. Remove the Jar and use a spatula to rearrange ingredients.
	Or, divide contents into smaller batches. For certain recipes, adding liquid in the Jar may also reduce the load.
If ingredients are stuck or not blending:	Unplug the Blender. Remove the Jar and use a spatula to rearrange ingredients in the Jar.
If Blender stops while blending and the white LED ring flashes rapidly:	An error is detected in the Blender. Contact an authorized service center for assistance. Please see the "Warranty and Service" sections.
If the white LED ring is off:	10 minutes of no activity will make the Blender go into Sleep mode. To wake up the Blender, press (D)⊕ button.
If the problem cannot be corrected:	See the "Warranty and Service" section. Do not return the Blender to the retailer. Retailers do not provide service.

RECIPE

Ingredients	Operating Time
1- 1½ cups water	Maximum period allowed by the timer.
1 large carrot, roughly chopped	
1 red or yellow beet, peeled and roughly chopped	
1 tart-sweet apple, cored and peeled and roughly chopped	
1 slice fresh ginger, ½ inch thick, peeled and roughly chopped	
6 ice cubes	





KitchenAid

©2020 All rights reserved.
Todos os direitos reservados.