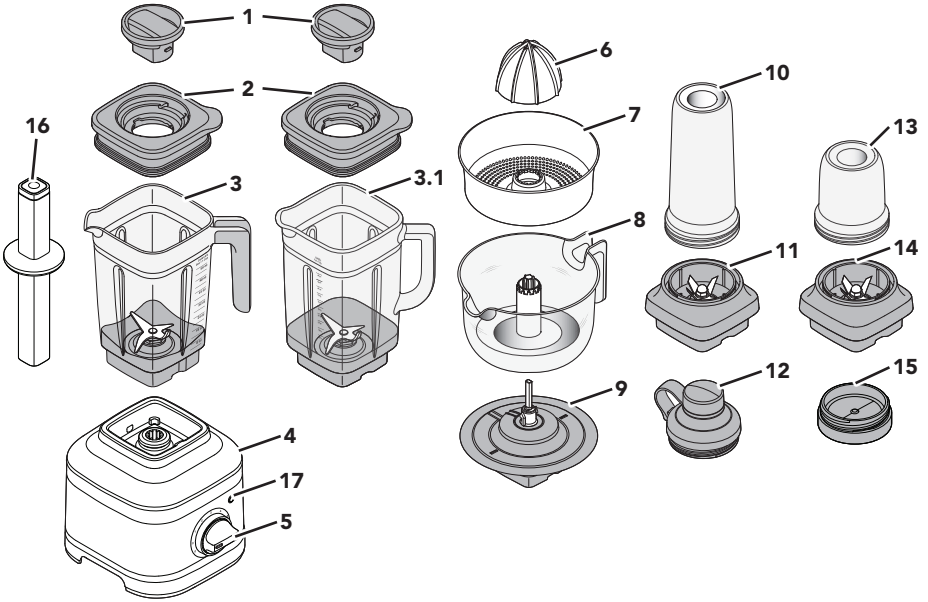


KitchenAid®

Stand Blender
KSB40**, 7KSB40**



PARTS AND FEATURES



- 1 Lid Center Cap
- 2 Lid with Vent Well
- 3 Jar (56 oz / 1.6 L capacity)
- 3.1 Glass Jar**** (48 oz / 1.4 L capacity)
- 4 Base
- 5 Control Dial
- 6 Reamer*
- 7 Pulp Strainer/Basket*
- 8 Juice Container* (32 oz / 1 L capacity)
- 9 Gear Assembly*
- 10 Personal Jar** (16 oz / 500 ml capacity)
- 11 Blade Assembly of Personal Jar**
- 12 Personal Jar Easy-Drink Lid**
- 13 Small Batch Jar*** (6 oz / 200 ml capacity)
- 14 Blade Assembly of Small Batch Jar***
- 15 Small Batch Jar Lid***
- 16 Tamper
- 17 START/STOP button (▶|⊗) with LED ring

* Accessories only included with Citrus Press models.
 ** Accessories only included with Personal Jar models.
 *** Accessories only included with Small Batch Jar models.
 **** Accessories only included with Glass Jar Blender models.

PRODUCT SAFETY

Your safety and the safety of others are very important.

We have provided many important safety messages in this manual and on your appliance. Always read and obey all safety messages.



This is the safety alert symbol.

This symbol alerts you to potential hazards that can kill or hurt you and others.

All safety messages will follow the safety alert symbol and either the word "DANGER" or "WARNING." These words mean:

 **DANGER**

You can be killed or seriously injured if you don't immediately follow instructions.

 **WARNING**

You can be killed or seriously injured if you don't follow instructions.

All safety messages will tell you what the potential hazard is, tell you how to reduce the chance of injury, and tell you what can happen if the instructions are not followed.

IMPORTANT SAFEGUARDS

When using electrical appliances, basic safety precautions should always be followed, including the following:

1. Read all instructions.
2. To protect against risk of electrical shock do not put Stand Blender base in water or other liquid.
3. This appliance is not intended for use by persons (including children) with reduced physical, sensory, or mental capabilities, or lack of experience and knowledge, unless they are closely supervised and instructed concerning use of the appliance by a person responsible for their safety. Close supervision is necessary when any appliance is used by or near children. Children should be supervised to ensure that they do not play with the appliance.
4. Turn the appliance OFF, then unplug from the outlet when not in use, before assembling or disassembling parts and before cleaning. To unplug, grasp the plug and pull from the outlet. Never pull from the power cord.
5. Avoid contacting moving parts.
6. Do not operate any appliance with a damaged cord or plug or after the appliance malfunctions, or is dropped or damaged in any manner. Contact the manufacturer at their customer service telephone number for information on examination, repair or adjustment.
7. Do not use outdoors.
8. Do not let cord hang over edge of table or counter.
9. Keep hands and utensils, other than the Tamper provided, out of the container while blending to reduce the risk of severe injury to persons or damage to the Blender. The cover must remain in place when using the Tamper through the cover opening. A scraper may be used but must be used only when the Blender is not running.

PRODUCT SAFETY


10. Blades are sharp. Handle carefully.
11. Always operate Blender with cover in place.
12. Do not blend hot liquids and ingredients in the Personal Jar or Small Batch Jar.
13. To reduce the risk of injury, never place cutter-assembly blades on base without Personal Jar or Small Batch Jar properly attached.
14. The use of attachments, including canning jars, not recommended or sold by the manufacturer may cause a risk of injury to persons.
15. Do not use appliance for other than intended use.
16. When blending hot liquids or ingredients, Lid Center Cap should remain in place over the lid opening. Always start on lowest speed and slowly ramp to desired speed when blending hot liquids or ingredients.

SAVE THESE INSTRUCTIONS

This product is designed for household use only.

ELECTRICAL REQUIREMENTS

⚠ WARNING



Electrical Shock Hazard

Plug into a grounded 3 prong outlet.

Do not remove ground prong.

Do not use an adapter.

Do not use an extension cord.

Failure to follow these instructions can result in death, fire, or electrical shock.

Voltage: 120 VAC

Frequency: 60 Hz

NOTE: If the plug does not fit in the outlet, contact a qualified electrician. Do not modify the plug in any way. Do not use an adapter.

Do not use an extension cord. If the power supply cord is too short, have a qualified electrician or serviceman install an outlet near the appliance.

The power rating of your Stand Blender is printed on the serial plate.





The maximum rating is based on the attachment that draws the greatest load (power). Other recommended attachments may draw significantly less power.





MOTOR HORSEPOWER

Motor horsepower for the blender motor was measured using a dynamometer, a machine that laboratories routinely use to measure the mechanical power of motors. Our 1.5 peak horsepower (HP) motor reference reflects the horsepower output of the motor itself and not the Blender's horsepower output in the Blender Jar. As with any Blender, the power output in the jar is not the same as the horsepower of the motor itself.

GET STARTED

BLENDER FUNCTION GUIDE

It features variable speeds (from **1** to **5**) and Pulse (**P**) function to customize blending. Also, pre-programmed recipe settings like, Ice Crush () , Icy Drink () and, Smoothie () are designed to deliver optimal results. Use the self-cleaning cycle () after blending for easy clean up. We encourage you to experiment to find the best speed for your favorite recipes.

Setting	Description	Blending Time (min:sec)	Suggested Items to Blend
Pulse P	Allows precise control of the duration and frequency of blending.	Manual	Salsa, crumb topping, chopped nuts, fruits or vegetables & more.
Variable speeds 1 - 5	Manual speeds offer ultimate control of the Blender.	3:00	Fruits, Soups, Sauces, Doughs, Vegetables, Butters, Nuts, Dips, Frozen desserts, Purees.
Ice Crush 	The Blender runs at optimal speed to crush ice.	00:30	To crush and chop ice without adding any liquid ingredients.
Icy Drink 	Gradually ramp up to full power to blend hard foods.	00:30	Ice, whole fruits or vegetables, or frozen fruits. Use for drinks as Margaritas, Daiquiris, and blended ice coffee drinks.
Smoothie 	The Blender will operate at the high speed to make puree of items or ingredients.	00:45	Fruits, vegetables, ice cream and yogurt into thick smoothie, blended drinks and milkshakes, etc.
Clean 	Quick pulses of power and high speeds work to clean the Blender jar.	00:13	Half of the Jar filled with warm water and 1-2 drops of dish soap.

BLENDER ACCESSORY GUIDE

Accessories	Capacity	Speed	Suggested items to blend chart
Blender Jar	56 oz / 1.6 L	All Speeds, Pulse, and Preset recipes	Full recipe smoothie, icy drinks, shakes / malts, dips, spreads and more.
Glass Blender Jar	48 oz / 1.4 L		
Personal Jar	16 oz / 500 ml		Individual smoothies, icy drinks, shakes / malts and lower volume recipes.
Small Batch Jar	6 oz / 200 ml		Small volume recipes - Purees, sauces, baby food, dressings, marinades, pesto and more.
Citrus Press	32 oz / 1 L	Speed 1	Citrus juice, Grapefruit juice and more.

USING THE BLENDER

First, clean all parts and accessories (see “Care and Cleaning” section).
Be sure the countertop beneath the Blender and surrounding areas are dry and clean.

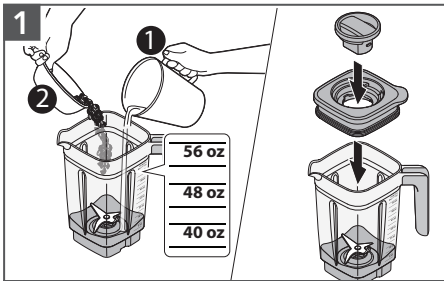
IMPORTANT: When moving your Blender, always support/lift from the Blender base. Base will become disengaged from jar if carried by Blender jar or Blender jar handle only.

⚠ WARNING

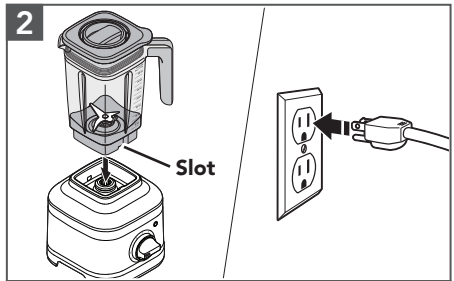
Electrical Shock Hazard



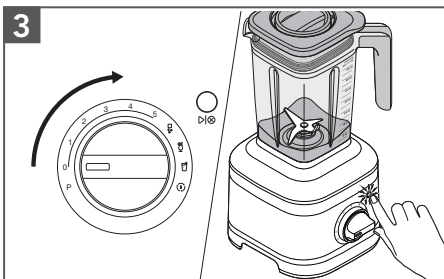
- Plug into a grounded 3 prong outlet.
- Do not remove ground prong.
- Do not use an adapter.
- Do not use an extension cord.
- Failure to follow these instructions can result in death, fire, or electrical shock.



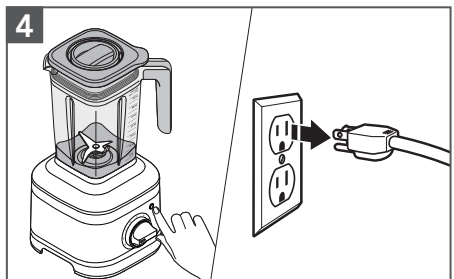
Add ingredients into jar (max. 56 oz / 1.6 L or max. 48 oz / 1.4 L for Glass Jar).
Secure the Lid and Lid Center Cap.



Place and align the Jar with the Slot to fit inside the jar pad, facing Jar handle towards Control Dial. Plug the Blender into a grounded 3 prong outlet.



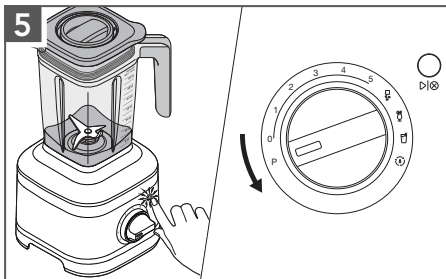
Turn Dial from (O) to desired speed or preset recipe program. Press (D|⊗) to start. See “Blender Function Guide” for more details.



When finished, press (D|⊗) to stop.
Unplug before removing the Blender Jar.

NOTE: For variable speeds (from 1 to 5), the Blender will stop automatically after 3 minutes of run time. For preset recipe programs, the Blender will automatically stop blending once the cycle is complete.

USING THE BLENDER



Pulse mode: Press (P). Turn and hold the Control Dial from (O) to (P) as per desired interval of time. When finished, release the Dial to stop.

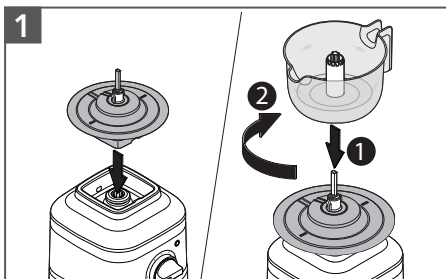


Tamper accessory: Remove the Lid Center Cap only. Stir or press contents down towards the blade. Then, place the Lid Center cap back before resuming blending.

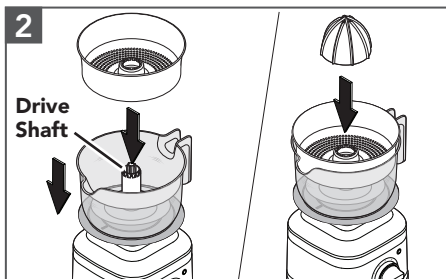
NOTE: If blending hot liquids and ingredients, start on a low speed and then ramp up to the desired speed. Use variable speed and run for 1-2 minutes.

IMPORTANT: Allow the Blender to fully stop before removing the Lid, Jar, or pouring out blended ingredients.

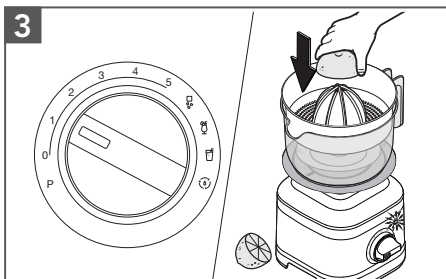
USING THE CITRUS PRESS



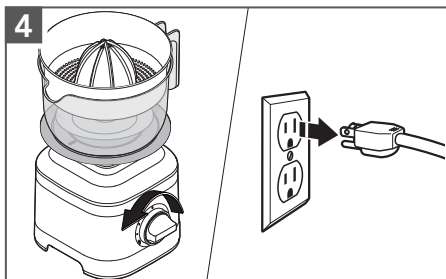
Place the Gear Assembly on Base. Place the Juice Container on Gear Assembly and twist clockwise to lock in place.



Place the Pulp Basket and then the Reamer into the Juice Container by aligning them with the Drive Shaft.



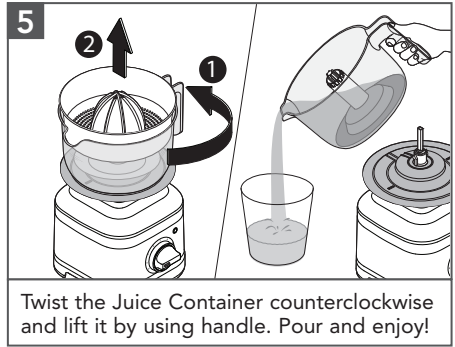
Turn from (O) to speed (1 or 2). Hold down the halved citrus fruit on the Reamer. Press (P) button to start.



Press (P) button to stop the Blender. Turn the Control Dial to (O). Unplug the Blender.

USING THE CITRUS PRESS

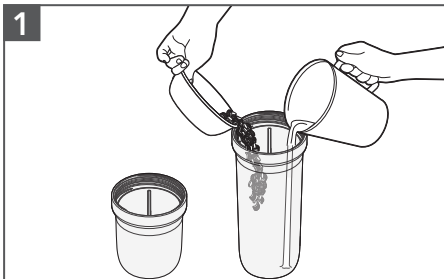
IMPORTANT: Allow the Blender to fully stop before removing the Reamer, Juice Container, or pouring out the juice.



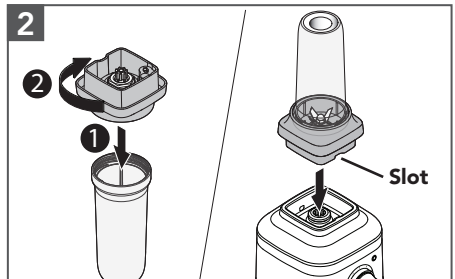
USING THE PERSONAL JAR/SMALL BATCH JAR

The Personal Jar is perfect in size for single servings or smaller recipes and handy to carry with you on the go. And the Small Batch Jar is perfect for smaller recipes like sauces, dressings, marinades and more.

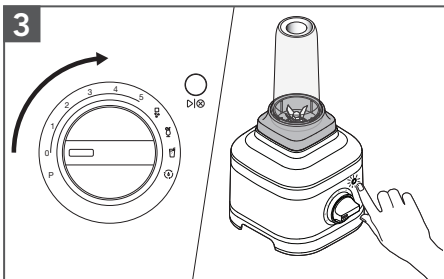
NOTE: Do not blend hot liquids and ingredients in the Personal Jar or Small Batch Jar.



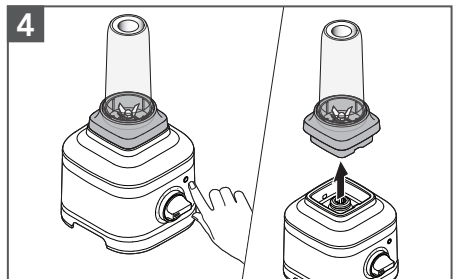
Personal Jar: Add ingredients (max. 16 oz / 500 ml). Add ice or frozen items, then leafy greens, then soft foods and liquids at last.
Small Batch Jar : Add ingredients (max. 6 oz / 200 ml).



Secure the Blade Assembly on the Jar and rotate it clockwise until it is tight. Place it on the Base.



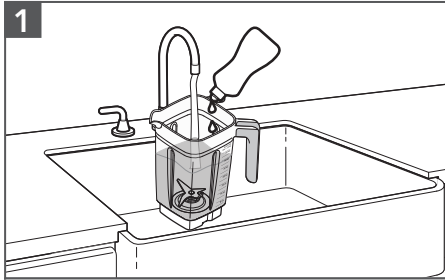
Turn from (O) to desired speed or preset recipe program. Press (D) to start. See "Blender Function Guide" for more details.



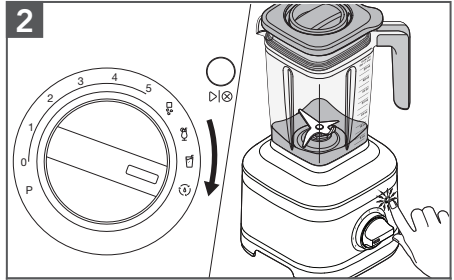
Press (D) to stop. Always remove the Personal Jar or Small Batch Jar with Blade Assembly from the Base.

CARE AND CLEANING

USING THE CLEAN FUNCTION

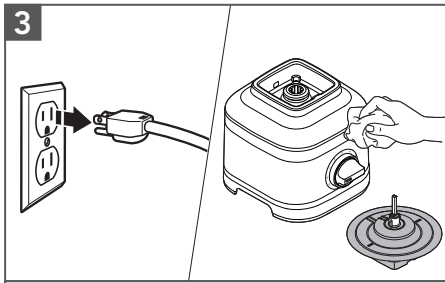


1 Fill half of the Jar with warm water and add 1 or 2 drops of dish-washing liquid. Place the Jar on the base. Secure the Lid and Lid Center Cap.

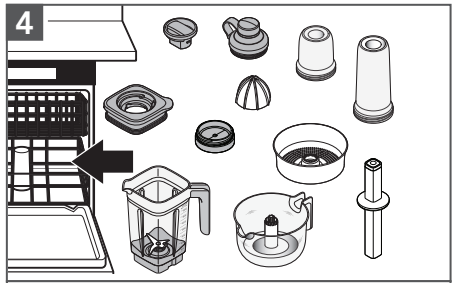


2 Turn from (0) to (Clean). Press (Power) button to start. Remove and empty contents and rinse with warm water and dry thoroughly.

NOTE: Do not immerse the Blender base or cord in water. Do not use abrasive cleansers or scouring pads to avoid scratching.



3 Unplug before cleaning. Wipe the Base, Power Cord and the Gear Assembly of the Citrus Press with a warm, damp cloth and dry with a soft cloth.




Dishwasher-safe, top rack only: Personal Jar, Small Batch Jar, Lids, Blade Assembly, Reamer, Juice Container, Pulp Basket, Tamper, and Lid Center Cap. Blender Jar and Glass Jar can also be washed in the bottom rack.

FOR DETAILED INFORMATION ON USING AND CLEANING THE BLENDER

Visit www.kitchenaid.com/quickstart for additional instructions with videos, inspiring recipes, and tips on how to clean your Blender.

TROUBLESHOOTING GUIDE



! WARNING

Electrical Shock Hazard

Plug into a grounded 3 prong outlet.

Do not remove ground prong.

Do not use an adapter.

Do not use an extension cord.

Failure to follow these instructions can result in death, fire, or electrical shock.


Problem	Solution
If Blender fails to start:	Check if the Blender is securely plugged into a grounded 3 prong outlet.
	If you have a circuit breaker box, make sure the circuit is closed.
If Blender stops after 3 minutes:	It's a part of the Blender operation to ensure lasting durability. Turn the Control Dial to (O) and repeat the process until desired consistency.
If Blender stops while blending:	When overloaded or jammed, it will automatically shut off to prevent motor damage. Unplug the Blender. Remove the Jar and use a spatula to rearrange ingredients.
	Or, divide contents into smaller batches. For certain recipes, adding liquid in the Jar may also reduce the load.
If ingredients are stuck or not blending:	Unplug the Blender. Remove the Jar and use a spatula to rearrange ingredients in the Jar.
If Blender stops while blending with Personal Jar or Small Batch Jar:	Unplug the Blender. Remove the Personal Jar or Small Batch Jar with the Blade Assembly from the base. Shake it a little bit. Place it back on the base, plug in the Blender and turn it back on to continue regular use.
If Blender stops while blending and the white LED ring flashes rapidly:	An error is detected in the Blender. Contact an authorized service center for assistance. Please see the "Warranty and Service" sections.
If the white LED ring is off:	10 minutes of no activity will make the Blender go into Sleep mode. To wake up the Blender, press (D)⓪ button.

If the problem is not due to one of the above items, see the "Warranty and Service" section. Do not return the Blender to the retailer. Retailers do not provide service.

WARRANTY AND SERVICE

KITCHENAID® BLENDER WARRANTY FOR THE 50 UNITED STATES, THE DISTRICT OF COLUMBIA, PUERTO RICO, AND CANADA

This warranty extends to the purchaser and any succeeding owner for Blenders operated in the 50 United States, the District of Columbia, Puerto Rico, and Canada.

Length of Warranty:	Five Years Full Warranty from date of purchase.
KitchenAid Will Pay for Your Choice of: 	<p>Hassle-Free Replacement of your Blender. See the next page for details on how to arrange for service, or call the Customer eXperience Center toll-free at 1-800-541-6390.</p> <p>OR</p> <p>The replacement parts and repair labor costs to correct defects in materials and workmanship. Service must be provided by an Authorized KitchenAid Service Facility.</p>
KitchenAid Will Not Pay for:	<ul style="list-style-type: none"> A. Repairs when your Blender is used in other than normal single family home use. B. Damage resulting from accident, alteration, misuse or abuse. C. Any shipping or handling costs to deliver your Blender to an Authorized Service Facility. D. Replacement parts or repair labor costs for Blender attachments operated outside the 50 United States, District of Columbia, Puerto Rico, and Canada.
<p>DISCLAIMER OF IMPLIED WARRANTIES; LIMITATION OF REMEDIES</p> <p>IMPLIED WARRANTIES, INCLUDING TO THE EXTENT APPLICABLE WARRANTIES OF MERCHANTABILITY OR FITNESS FOR A PARTICULAR PURPOSE, ARE EXCLUDED TO THE EXTENT LEGALLY PERMISSIBLE. ANY IMPLIED WARRANTIES THAT MAY BE IMPOSED BY LAW ARE LIMITED TO FIVE YEARS, OR THE SHORTEST PERIOD ALLOWED BY LAW. SOME STATES AND PROVINCES DO NOT ALLOW LIMITATIONS OR EXCLUSIONS ON HOW LONG AN IMPLIED WARRANTY OF MERCHANTABILITY OR FITNESS LASTS, SO THE ABOVE LIMITATIONS OR EXCLUSIONS MAY NOT APPLY TO YOU.</p> <p>IF THIS PRODUCT FAILS TO WORK AS WARRANTED, CUSTOMER'S SOLE AND EXCLUSIVE REMEDY SHALL BE REPAIR OR REPLACEMENT ACCORDING TO THE TERMS OF THIS LIMITED WARRANTY. KITCHENAID AND KITCHENAID CANADA DO NOT ASSUME ANY RESPONSIBILITY FOR INCIDENTAL OR CONSEQUENTIAL DAMAGES. This warranty gives you specific legal rights and you may also have other rights which vary from state to state or province to province.</p>	

WARRANTY AND SERVICE

HASSLE-FREE REPLACEMENT WARRANTY—50 UNITED STATES, DISTRICT OF COLUMBIA, AND PUERTO RICO

We're so confident the quality of our products meets the exacting standards of KitchenAid that, if your Blender should fail within the five years of ownership, KitchenAid will arrange to deliver an identical or comparable replacement to your door free of charge and arrange to have your original Blender returned to us. Your replacement unit will also be covered by our five years limited warranty.

If your Blender should fail within the five years of ownership, simply call our toll-free Customer eXperience Center at

1-800-541-6390 Monday through Friday. Please have your original sales receipt available when you call. Proof of purchase will be required to initiate the claim. Give the consultant your complete shipping address (no P.O. Box numbers, please).

When you receive your replacement Blender, use the carton, packing materials, and prepaid shipping label to pack up your original Blender and send it back to KitchenAid.

HASSLE-FREE REPLACEMENT WARRANTY—CANADA

We're so confident the quality of our products meets the exacting standards of the KitchenAid brand that, if your Blender should fail within the five years of ownership, we will replace your Blender with an identical or comparable replacement. Your replacement unit will also be covered by our five years limited warranty.

If your Blender should fail within the five years of ownership, simply call our toll-free Customer eXperience Center at

1-800-807-6777 Monday through Friday. Please have your original sales receipt available when you call. Proof of purchase will be required to initiate the claim. Give the consultant your complete shipping address.

When you receive your replacement Blender, use the carton, packing materials, and prepaid shipping label to pack up your original Blender and send it back to KitchenAid.

ARRANGING FOR SERVICE AFTER THE WARRANTY EXPIRES, OR ORDERING ACCESSORIES AND REPLACEMENT PARTS

In the United States and Puerto Rico:

For service information, or to order accessories or replacement parts, call toll-free at **1-800-541-6390** or write to:

Customer eXperience Center,
KitchenAid Small Appliances,
P.O. Box 218, St. Joseph, MI 49085-0218

Outside the United States and Puerto Rico:

Consult your local KitchenAid dealer or the store where you purchased the Blender for information on how to obtain service.

For service information in Canada:

Call toll-free **1-800-807-6777**.

For service information in Mexico:

Call toll-free **01-800-0022-767**.

DISCOVER MORE. DÉCOUVREZ PLUS. DESCUBRA MÁS.
[KITCHENAID.COM/QUICKSTART](https://kitchenaid.com/quickstart)



PRODUCT QUESTIONS OR RETURNS

QUESTIONS SUR LE PRODUIT OU LES RETOURS

PREGUNTAS SOBRE EL PRODUCTO O DEVOLUCIONES

USA: 1.800.541.6390 | [KitchenAid.com](https://kitchenaid.com)

CANADA: 1.800.807.6777 | [KitchenAid.ca](https://kitchenaid.ca)

MEXICO: [KitchenAid.com.mx](https://kitchenaid.com.mx)

LATIN AMERICA: [KitchenAid-Latam.com](https://kitchenaid-latam.com)

KitchenAid[®]

®/™ ©2020 KitchenAid. All rights reserved. Used under license in Canada.

Tous droits réservés. Utilisé sous licence au Canada.

Todos los derechos reservados. Usada en Canadá bajo licencia.