

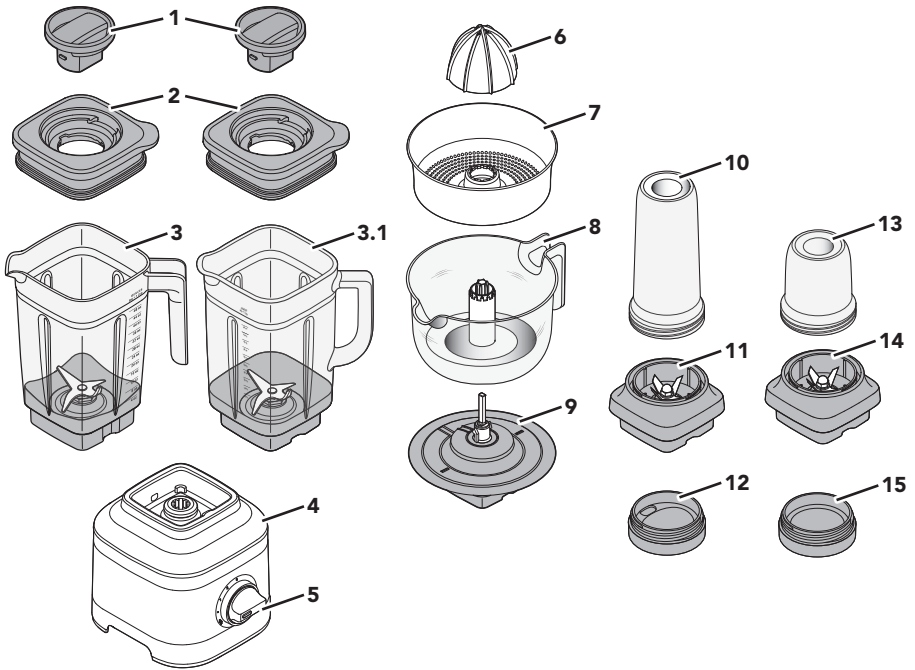
KitchenAid

Stand Blender
5KSB13**



| | | | | | |
|-----------|-----------------------|----|-----------|--------------------------|-----|
| EN | Owner's Manual | 2 | NO | Brukerhåndbok | 111 |
| DE | Bedienungsanleitung | 15 | FI | Omistajan opas | 123 |
| FR | Manuel d'utilisation | 27 | DA | Brugervejledning | 135 |
| IT | Manuale utente | 39 | IS | Handbók eiganda | 147 |
| NL | Gebruikershandleiding | 51 | RU | Руководство пользователя | 159 |
| ES | Manual del usuario | 63 | PL | Instrukcja obsługi | 171 |
| PT | Manual do Utilizador | 75 | CS | Uživatelská příručka | 183 |
| EL | Εγχειρίδιο χρήστη | 87 | TR | Kullanıcı Kılavuzu | 195 |
| SV | Användarhandbok | 99 | AR | دليل المالك | 1 |

PARTS AND FEATURES



- | | | | |
|------------|--------------------------------|-----------|--------------------------------------|
| 1 | Lid Centre Cap | 8 | Juice Container* (1 L capacity) |
| 2 | Lid with Vent Well | 9 | Gear Assembly* |
| 3 | Jar (1.4 L capacity) | 10 | Personal Jar** (500 ml capacity) |
| 3.1 | Glass Jar**** (1.4 L capacity) | 11 | Blade Assembly of Personal Jar** |
| 4 | Base | 12 | Personal Jar Easy-Drink Lid** |
| 5 | Control Dial | 13 | Small Batch Jar*** (200 ml capacity) |
| 6 | Reamer* | 14 | Blade Assembly of Small Batch Jar*** |
| 7 | Pulp Strainer/Basket* | 15 | Small Batch Jar Lid*** |

* Accessories only included with Citrus Press model.

** Accessories only included with Personal Jar model.

*** Accessories only included with Small Batch Jar model.

**** Accessories only included with Glass Jar Blender model.

The Glass Blender Jar (1.4 L capacity) is clear, easy-to-clean (Dishwasher safe) and, with the comfortable firm grip for better handling.

PRODUCT SAFETY

Your safety and the safety of others are very important.

We have provided many important safety messages in this manual and on your appliance. Always read and obey all safety messages.



This is the safety alert symbol.

This symbol alerts you to potential hazards that can kill or hurt you and others.

All safety messages will follow the safety alert symbol and either the word "DANGER" or "WARNING." These words mean:

! DANGER

You can be killed or seriously injured if you don't immediately follow instructions.

! WARNING

You can be killed or seriously injured if you don't follow instructions.

All safety messages will tell you what the potential hazard is, tell you how to reduce the chance of injury, and tell you what can happen if the instructions are not followed.

IMPORTANT SAFEGUARDS

When using electrical appliances, basic safety precautions should always be followed, including the following:

1. Read all instructions. Misuse of appliance may result in personal injury.
2. European Union only: Appliances can be used by persons with reduced physical, sensory or mental capabilities or lack of experience and knowledge if they have been given supervision or instruction concerning use of the appliance in a safe way and understand the hazards involved. Children shall not play with the appliance.
3. European Union only: This appliance shall not be used by children. Keep the appliance and its cord out of reach of children.
4. To protect against risk of electrical shock do not put the Stand Blender Base in water or other liquid.
5. This appliance is not intended for use by persons (including children) with reduced physical, sensory or mental capabilities, or lack of experience and knowledge, unless they have been given supervision or instruction concerning use of the appliance by a person responsible for their safety.
6. Children should be supervised to ensure that they do not play with the appliance.
7. Turn the appliance OFF, then unplug from the outlet when not in use, before assembling or disassembling parts and before cleaning. To unplug, grasp the plug and pull from the outlet. Never pull from the power cord.
8. Avoid contacting moving parts.
9. Do not operate any appliance with a damaged cord or plug or after the appliance malfunctions, or is dropped or damaged in any manner. Contact the manufacturer at their customer service telephone number for information on examination, repair or adjustment.
10. Do not use outdoors.
11. Do not let cord hang over edge of table or counter.

PRODUCT SAFETY

12. Keep hands and utensils out of container while blending to reduce the risk of severe injury to persons or damage to the Blender. A scraper may be used but must be used only when the Blender is not running.
13. Blades are sharp. Care should be taken when handling the sharp cutting blades, emptying the jar and during cleaning.
14. Be careful if hot liquid is poured into the blender as it can be ejected out of the appliance due to sudden steaming.
15. If the supply cord is damaged, it must be replaced by the manufacturer, its service agent or similarly qualified persons in order to avoid a hazard.
16. Refer to the “Care and Cleaning” section for instructions on cleaning the surfaces in contact with food.
17. Always operate the Blender with cover in place.
18. When blending hot liquids or ingredients, Lid Centre Cap should remain in place over the lid opening. Always start on lowest speed and slowly ramp to desired speed when blending hot liquids or ingredients.
19. Do not blend hot liquids and ingredients in the Personal Jar or Small Batch Jar.
20. To reduce the risk of injury, never place blade assembly on the base without Personal Jar or Small Batch Jar properly attached.
21. The use of attachments, including canning jars, not recommended or sold by the manufacturer may cause a risk of injury to persons.
22. This appliance is intended to be used in household and similar applications such as:
 - staff kitchen areas in shops, offices, or other working environments;
 - farmhouses;
 - by clients in hotels, motels and other residential type environments;
 - bed and breakfast type environments.

SAVE THESE INSTRUCTIONS

ELECTRICAL REQUIREMENTS

Voltage: 220-240 VAC

Frequency: 50-60 Hz

Wattage: 650 Watts

NOTE: If the plug does not fit in the outlet, contact a qualified electrician.
Do not modify the plug in any way.
Do not use an adapter.


Do not use an extension cord. If the power supply cord is too short, have a qualified electrician or service technician to install an outlet near the appliance.

The cord should be arranged so that it will not drape over the countertop or tabletop where it can be pulled on by children or tripped over unintentionally.

PRODUCT SAFETY

ELECTRICAL EQUIPMENT WASTE DISPOSAL

Disposal of packing material

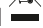
The packing material is 100% recyclable and is marked with the recycle symbol . The various parts of the packing must therefore be disposed of responsibly and in full compliance with local authority regulations governing waste disposal.

Scrapping the product

- This appliance is marked in compliance with European Directive 2012/19/EU, Waste Electrical and Electronic Equipment (WEEE).
- By ensuring this product is disposed of correctly, you will help prevent potential negative consequences for the environment and human health,

which could otherwise be caused by inappropriate waste handling of this product.



- The symbol  on the product or on the accompanying documentation indicates that it should not be treated as domestic waste but must be taken to an appropriate collection centre for the recycling of electrical and electronic equipment.

For more detailed information about treatment, recovery and recycling of this product, please contact your local city office, your household waste disposal service, or the shop where you purchased the product.

DECLARATION OF CONFORMITY

This appliance has been designed, constructed and distributed in compliance with the safety requirements of EC Directives: 2014/35/EU, 2014/30/EU, 2009/125/EC and 2011/65/EU (RoHS Directive).

GET STARTED

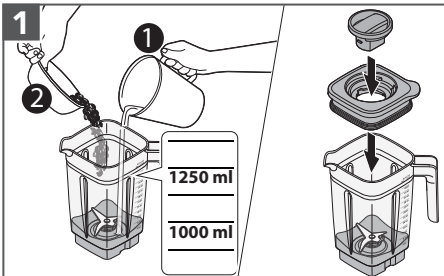
The Blender features 3 speeds and Ice Crush/Pulse function, allowing you to customise your blend. Recipes can differ significantly and might work best on speed that are not obvious. We encourage you to find the best speed match for your favourite recipes.

| Accessories | Capacity | Speed | Suggested items to blend |
|-------------------|----------|------------------------------------|---|
| Blender Jar | 1.4 L | Speed 1, 2, 3, and Pulse/Ice crush | Smoothies, Icy drinks, Shakes / Malts, Dips, Spreads and more. |
| Glass Blender Jar | 1.4 L | | |
| Personal Jar | 500 ml | | Individual Smoothie, Icy drinks, Shakes / Malts and lower volume recipes. |
| Small Batch Jar | 200 ml | | Small volume recipes - Purées, Sauces, Baby food, Dressings, Marinades, Pesto and more. |
| Citrus Press | 1 L | Speed 1 | Citrus juice, Grapefruit juice and more. |

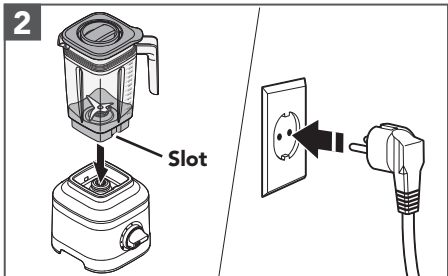
BLENDER USAGE

Before first use, clean all parts and accessories (see Care and Cleaning section). Be sure the countertop beneath the Blender and surrounding areas are dry and clean.

IMPORTANT: When moving your Blender, always support/lift from the Blender base. The base will become disengaged from Jar if, carried by Blender Jar or Blender Jar handle only.

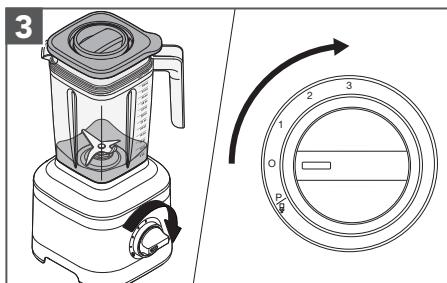


1 Add ingredients into Blender Jar OR Glass Blender Jar (max. 1.4 L).
Secure the Lid and Lid Centre Cap.

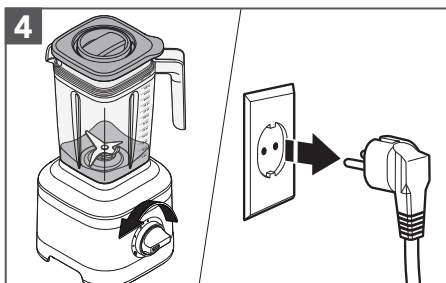


2 Place the Blender Jar on the base by aligning with the Slot to fit inside the jar pad, so that the handle of the Jar will be towards the Control Dial.
Plug the Blender into an earthed outlet.

BLENDER USAGE



Turn the Control Dial from (0) to desired speed for constant operation.

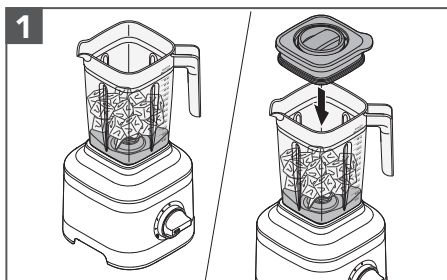


When finished, turn the Blender off by returning the Control Dial to (0). Unplug the Blender before removing the Blender Jar.

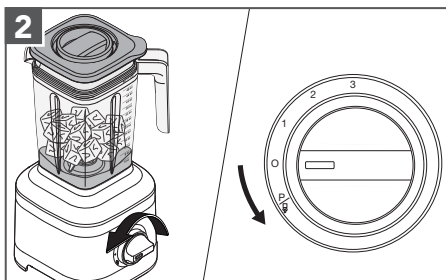
IMPORTANT: Allow the Blender to fully stop before removing the Lid, Jar, or pouring out your blended ingredients.

PULSE /ICE CRUSH FUNCTION USAGE

Your Blender offers a "Pulse/Ice Crush (P/I)" function with a soft start to avoid ingredient splatter. In this function, the Blender will operate at optimal speed to crush ice. This function will continue until you release the Control Dial, returning to (0).



Place ingredients or Ice cubes into the Blender Jar.
Firmly secure the Lid with Lid Centre Cap on Blender Jar.



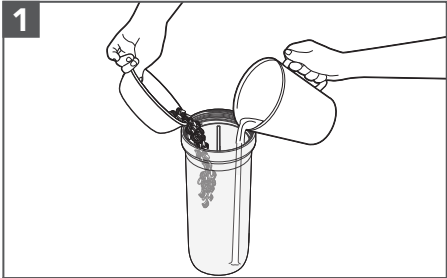
Turn and hold the Control Dial from (0) to (P/I) as per desired interval of time.
When finished, release the Control Dial to stop the Blender.

TIP: Use half of standard ice cube tray or 7-8 standard ice cubes at a time for blending. The Pulse/Ice Crush (P/I) function has been optimised to crush and chop ice without adding any liquid ingredients.

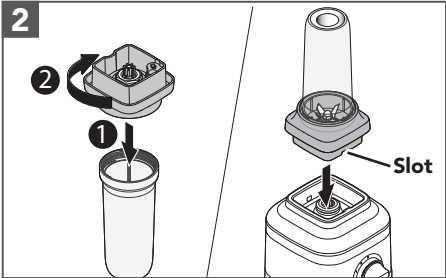
USING THE PERSONAL JAR

The Personal Jar is perfect in size for single servings or smaller recipes and handy to carry with you on the go. Before first use, clean all parts and accessories (see "Care and Cleaning" section).

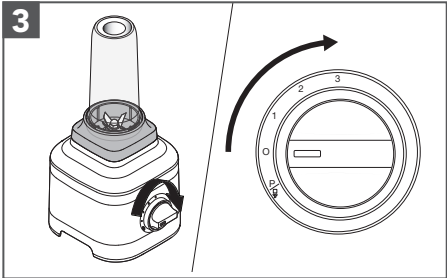
IMPORTANT: Do not blend hot liquids and ingredients in the Personal Jar.



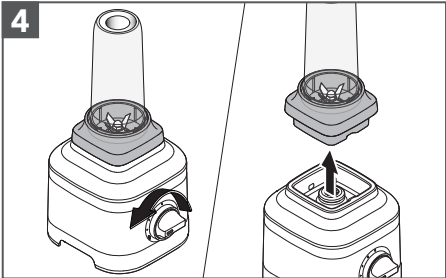
1 Add ingredients (max. 500 ml). Add ice or frozen items, then leafy greens, then soft foods and liquids at last.



2 Secure the Blade Assembly on the Personal Jar and rotate it clockwise until it is tight. Place it on the Blender Base.



3 Turn the Control Dial from (0) to desired speed for constant operation.



4 When finished, turn the Blender off by returning Control Dial to (0). Always remove the Personal Jar with the Blade Assembly from the Base.

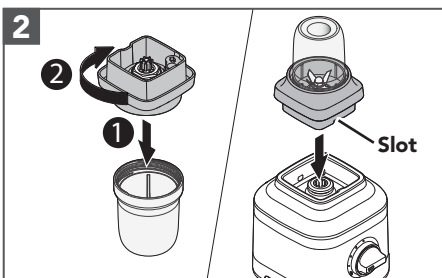
USING THE SMALL BATCH JAR

The Small Batch Jar is perfect for smaller recipes like sauces, dressings, marinades and more. Before first use, clean all parts and accessories (see "Care and Cleaning" section).

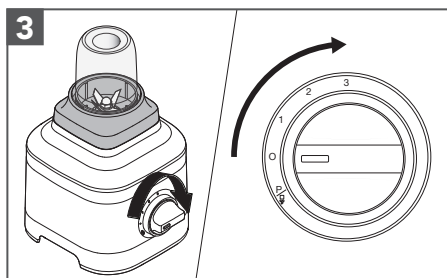
IMPORTANT: Do not blend hot liquids and ingredients in the Small Batch Jar.



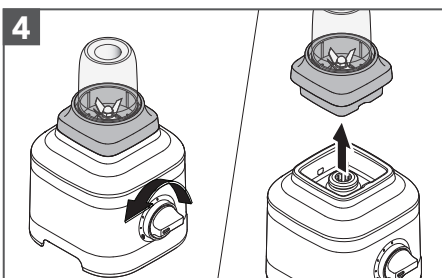
1 Add ingredients into the Small Batch Jar (max. 200 ml).



2 Secure the Blade Assembly on Small Batch Jar and rotate it clockwise until it is tight. Place it on the Blender base.



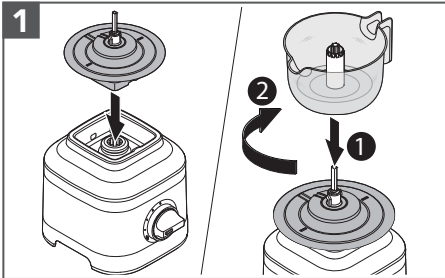
3 Turn the Control Dial from (0) to desired speed for constant operation.



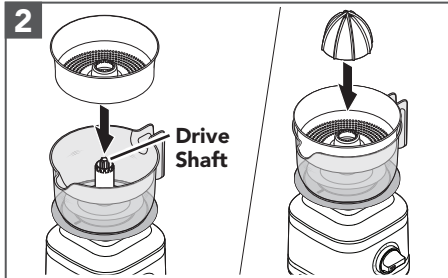
4 When finished, turn the Blender off by returning Control Dial to (0). Always remove the Small Batch Jar with Blade Assembly from the Base.

USING THE CITRUS PRESS

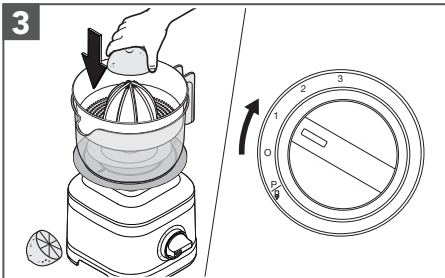
Before first use, clean all parts and accessories (see "Care and Cleaning" section).



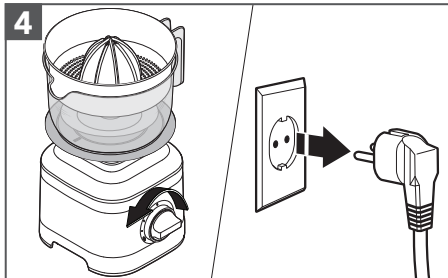
Place the Gear Assembly on the base. Then, place the Juice Container on the Gear Assembly and twist clockwise to lock in place.



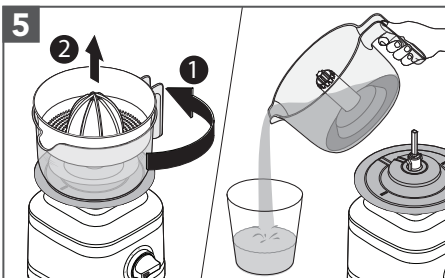
Place the Pulp Basket and then the Reamer into the Juice Container by aligning them with the Drive Shaft.



Hold down the halved citrus fruit on the Reamer. Turn the Control Dial from (0) to speed (1) to start juicing.

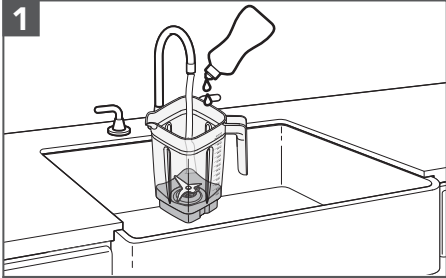


When finished juicing, turn the Blender off by returning Control Dial to (0). Unplug the Blender.

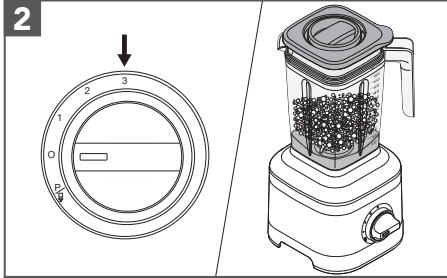


Twist the Juice Container counterclockwise and lift it by using handle. Pour and enjoy!

CARE AND CLEANING

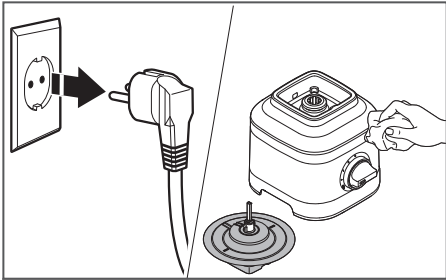


1
Empty the Jar. Fill half of the Jar with warm water and add 1 or 2 drops of dish-washing liquid.
Place the Jar on the base. Secure the Lid and Lid Centre Cap.

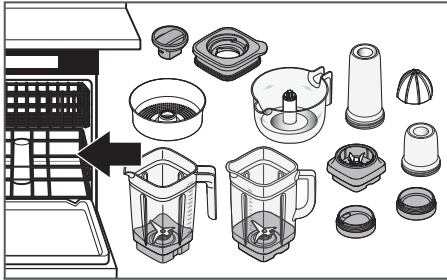


2
Run the Blender for 15-20 seconds on speed 3.
Remove the Jar, empty contents and rinse with warm water and dry thoroughly.

NOTE: To avoid damaging the Blender, do not immerse the Blender base or cord in water. Do not use abrasive cleansers or scouring pads to avoid scratching the Blender.



Unplug the Blender before cleaning. Wipe clean the Base, Power Cord and the Gear Assembly of the Citrus Press with a warm, damp cloth and dry with a soft cloth.



Dishwasher-safe, top rack only: Personal Jar, Small Batch Jar, Lids, Blade Assembly, Reamer, Juice Container, Pulp Basket and Lid Centre Cap.

Blender Jar and Glass Blender Jar can also be washed in the bottom rack.

TROUBLESHOOTING GUIDE

| Problem | Solution |
|---|---|
| If Blender fails to start: | Check to see if the Blender is securely plugged into an earthed electrical outlet. |
| | If you have a circuit breaker box, make sure the circuit is closed. Try unplugging the Blender, then plug it back into an earthed electrical outlet. |
| If Blender stops while blending: | The Blender becomes overloaded or jammed. It will automatically shut off to prevent damage to the motor. Unplug the power cord. Remove the Blender Jar from the base and use a spatula to rearrange ingredients in the Blender Jar. |
| | The Blender is overloaded, divide contents into smaller batches. For certain recipes, adding liquid to the Blender Jar may also reduce the load on the Blender. |
| If Blender stops while blending with Personal Jar or Small Batch Jar: | Unplug the power cord. Remove the Personal Jar or Small Batch Jar from the base with the Blade Assembly. Shake it a little bit. Place it back on the base, and then plug and turn the Blender back on to continue regular use. |
| If the problem cannot be corrected: | See the "Product Warranty and Customer Service" sections. Contact an Authorised Service Centre for assistance. Do not return the Blender to the retailer – retailers do not provide service. |

PRODUCT WARRANTY

| Length of Warranty: | KitchenAid Will Pay For: | KitchenAid Will Not Pay For: |
|---|--|---|
| Europe, Middle East and Africa: 5KSB13** Two years full warranty from date of purchase. | The replacement parts and repair labour costs to correct defects in materials or workmanship. Service must be provided by an Authorised KitchenAid Service Centre. | A. Repairs when Blender is used for operations other than normal household food preparation. B. Damage resulting from accident, alterations, misuse, abuse, or installation/operation not in accordance with local electrical codes. |

KITCHENAID DOES NOT ASSUME ANY RESPONSIBILITY FOR INDIRECT DAMAGES.

CUSTOMER CARE

In U.K. and Ireland:

For any questions, or to find the nearest KitchenAid Authorised Service Centre, please find our contact details below.

NOTE: All service should be handled locally by an Authorised KitchenAid Service Centre.

General hotline number:  00800 3810 4026

In other countries:

For all product related questions and after sales matters, please contact your dealer to obtain the name of the nearest Authorised KitchenAid Service/Customer Centre.

For more information, visit our website at:

www.KitchenAid.co.uk
www.KitchenAid.eu

PRODUCT REGISTRATION

Register your new KitchenAid appliance now: <http://www.kitchenaid.eu/register>

KitchenAid

©2019 All rights reserved.
Specifications subject to change without notice.