

Owner's Manual/Manual Del Propietario



GARAGE DOOR OPENER
Abridor de puerta de cochera
MODEL/MODELO 200.57983

For Residential Use Only
Sólo para uso residencial



Read and follow all safety rules and operating instructions before first use of this product.

Fasten the manual near the garage door after installation.

Periodic checks of the opener are required to ensure safe operation.

DO NOT install on a one-piece door.

HPe horsepower equivalent with same lifting force specification as 1HP Craftsman garage door openers.

Write down the Craftsman® serial number located on the garage door opener:
Anote en el recuadro el número de sería de Craftsman ubicado en el abre-puerta:



Leer y seguir todas las reglas de seguridad y las instrucciones de operación antes de usar este producto por primera vez.

Guardar este manual cerca de la puerta de la cochera.

Se deben realizar revisiones periódicas del abridor de puertas para asegurar su operación segura.

Los dispositivos y funciones automáticas deben usarse **ÚNICAMENTE** con puertas seccionales.

HPe equivalente en caballos de fuerza con la misma especificación de fuerza de elevación que los abridores de puerta de cochera Craftsman de 1HP.

Spanish Section Begins Page: 34
Manual en Español empieza en la pagina: 34

Table of Contents

Introduction

Symbols and Icons	2
Inventory	3
Preparation / Tools Required	4

Assembly

Rail and Trolley Assembly	5
Installing the Belt	6-7
Important Installation Instructions	8
Mounting Header Bracket	9

Installation

Attaching Rail to Header Bracket and Mounting Door Bracket	10
Mounting Opener to Ceiling	11
Attaching Door Arms	12
Installing Light and Emergency Release Handle	13

Wiring

Wiring Instructions	14
Connecting Photo Eye Safety System	15
Connecting Door Control Console	16
Connecting Power	17

Adjustment

Aligning the Photo Eye Safety System	17
Travel Limit Adjustment– I. UP Limit	18
Travel Limit Adjustment– II. DOWN Limit	19
Auto Force Adjustment	20
Final Adjustment and Testing	21

Operation

Programming 3-Button Remote	22
Programming Keyless Entry Pad	23
Important Safety Instructions	24
Operating the Opener	25
Door Status vs. Activation	26
Backup Battery Installation / Battery and Status Indicator	27
Backup Battery Features / Motion-Sensing Light	28
Maintenance	29
Troubleshooting	29-30

Repair Parts and Service

Rail Assembly Parts / Installation Parts / Accessories	31
Opener Assembly parts	32

Warranty

33

Symbols and Icons

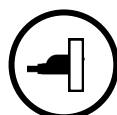


WARNING

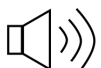
READ WARNINGS CAREFULLY to prevent **SERIOUS INJURY** or **DEATH** caused by electrocution or mechanical hazard.



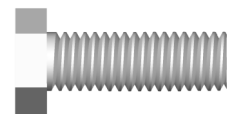
DO NOT connect power



Please connect power



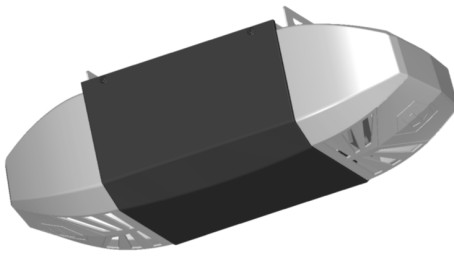
Beeps from built-in buzzer of the opener



Installation hardware are shown in actual size

*See Accessories in Repair Parts section of this manual for purchase information.

Inventory



Opener Unit + Light Lens Cover

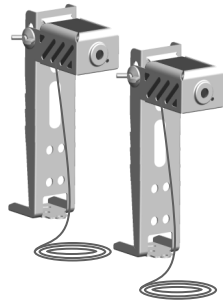


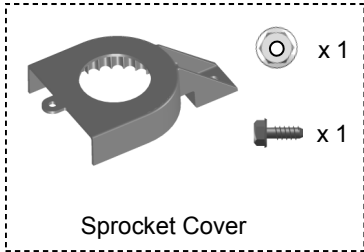
Photo Eye Safety System



Rail — Header Segment

Rail — Middle Segments x3

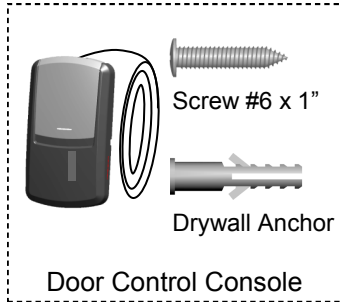
Rail — End Segment with Trolley Stop Bolt



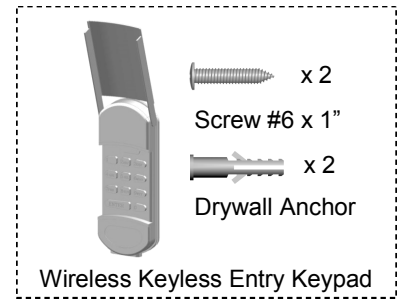
Sprocket Cover



Two 3-Button Mini Remotes



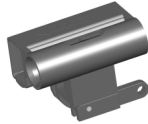
Door Control Console



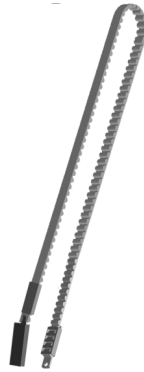
Wireless Keyless Entry Keypad



Emergency Release Handle + Rope



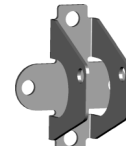
Trolley



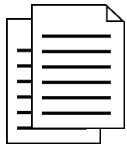
Belt



Pulley



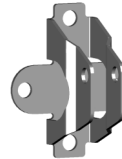
Header Bracket



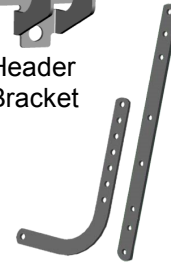
Literature + Safety Labels



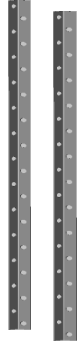
Trolley Shaft



Door Bracket



Door Arms



Hanging Brackets

INSTALLATION HARDWARE, LOCATED IN HARDWARE BAG (SHOWN IN ACTUAL SIZE)



Clevis Pin — Door arms
5/16" x 1"



Clevis Pin — Header Bracket
5/16" x 1-1/2"



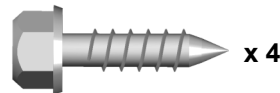
Clevis Pin — Pulley
3/8" x 1-3/4"



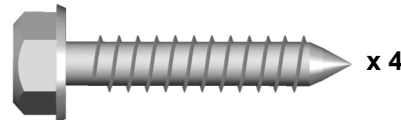
Hitch Pin — Locking Clevis Pins



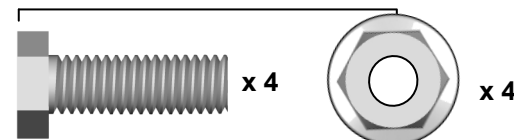
Self-Threading Screw 1/4" x 5/8"
Door Bracket



Lag Screw #12 x 1" — Photo Eye System



Lag Screw 5/16" x 1-1/2"
— Header Bracket / Mounting Opener



Bolt 5/16" x 1" 5/16" Flange Nut
— Door arms / Mounting Opener



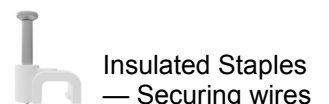
Screw #6 x 1-1/4"
- Push Button



Drywall Anchor
- Push Button



Master Link Set
— Trolley Shaft



Insulated Staples
— Securing wires

Preparation

WARNING

To prevent **SERIOUS INJURY** or **DEATH**:

- Before beginning installation of the opener please complete the following test to ensure that your door is balanced and in good working condition.
- A poorly balanced door can cause serious injury and damage to the opener.
- Always have a qualified garage door service technician make any required adjustments and/or repairs to your door before proceeding with installation.
- **DISABLE ALL LOCKS** and **REMOVE ALL ROPES** connected to the garage door **BEFORE** installing and/or operating the opener.



To prevent damage to the door and opener:

- **DO NOT** connect power until instructed.
- Operate this opener with AC 120V/60Hz power supply **ONLY**.

DO NOT REUSE PARTS FROM ANOTHER BRAND OF OPENER!!!

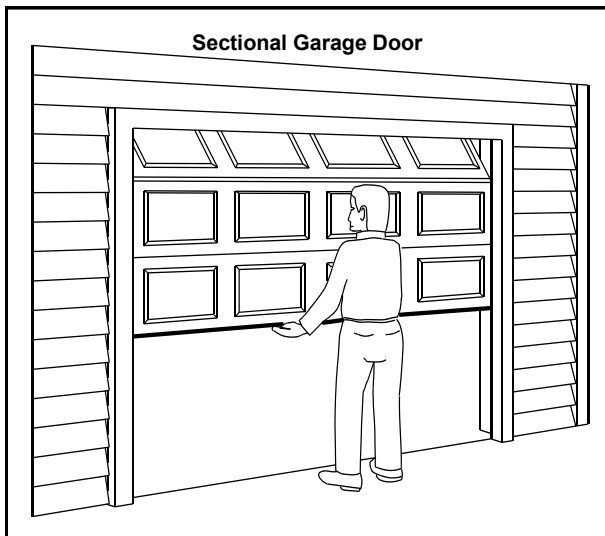
BEFORE beginning Installation:

1. **Disable locks and remove all ropes connected to the garage door.**
2. **Perform the following door test to ensure your door is balanced and in good working condition.**

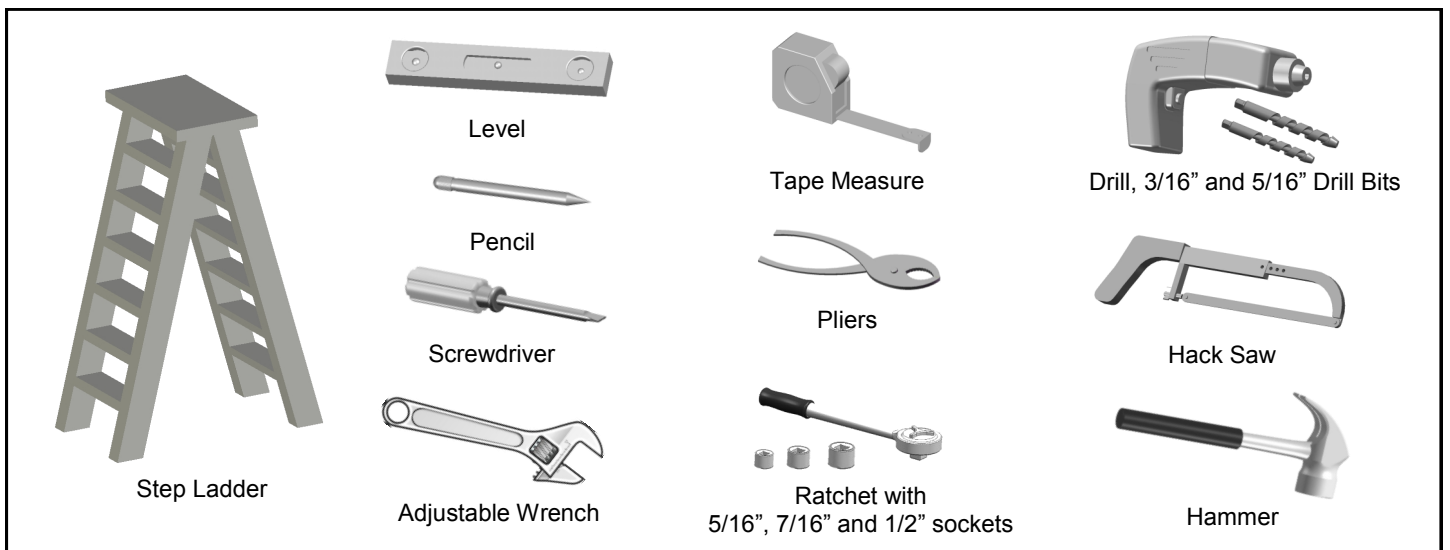
To Test Your Garage Door

1. Raise and lower the door to check if there is any sticking or binding.
2. Check for loose hinges, damaged rollers, frayed cables and damaged or broken springs.
3. Lift the door approximately halfway and release. The door should stay at the point under proper spring tension.

Call a qualified garage door service technician if your door binds, sticks or is unbalanced.



Tools Required



Rail and Trolley Assembly

WARNING

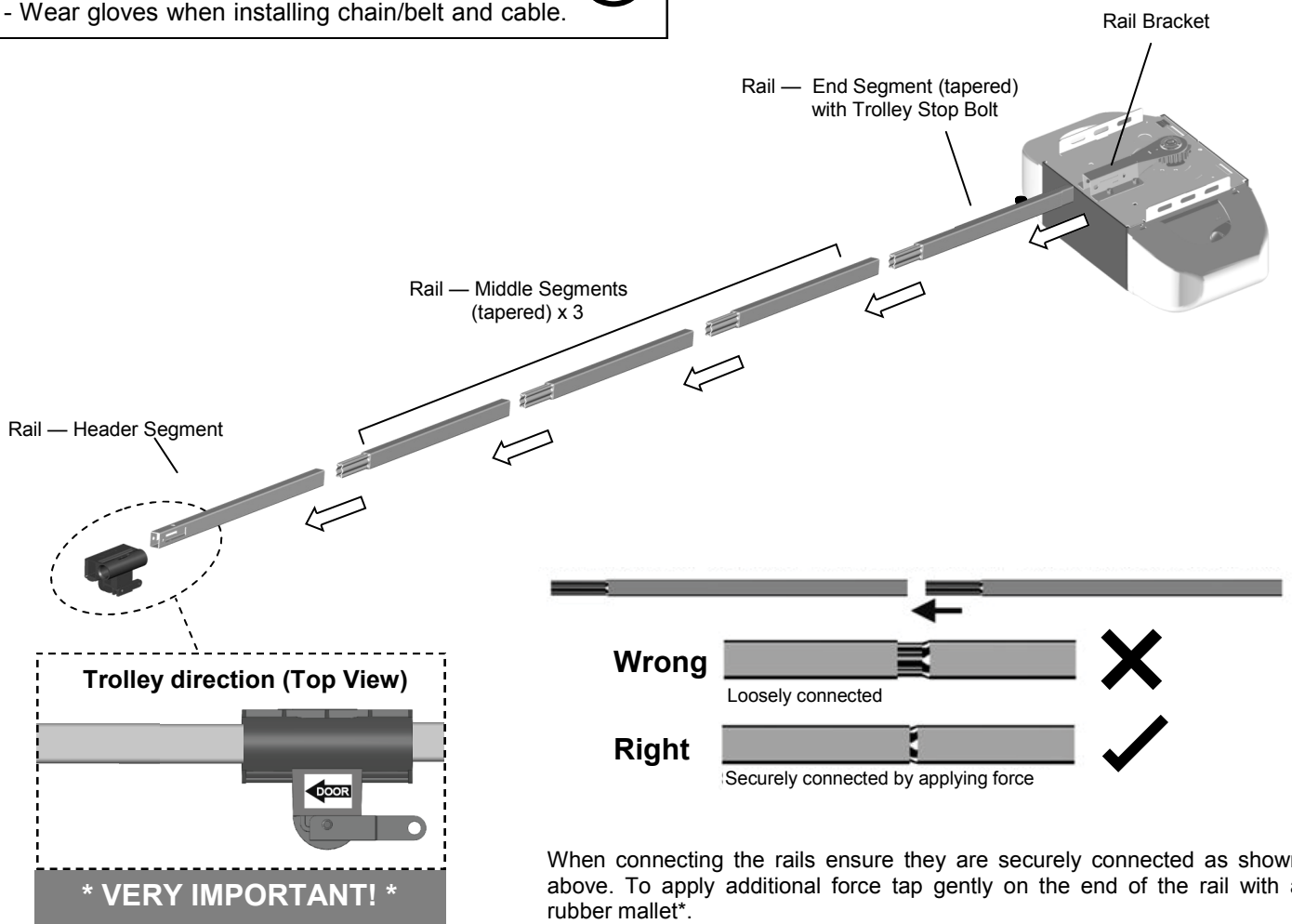
To prevent SERIOUS INJURY:

- DO NOT connect power until instructed.
- Keep hands and fingers clear from sprocket during operation.
- Wear gloves when installing belt.
- Keep hands and fingers away from joints and possible sharp edges.



CAUTION

- DO NOT connect power until instructed.
- To prevent INJURY, keep hands and fingers away from joints and possible sharp edges.
- Wear gloves when installing chain/belt and cable.



When connecting the rails ensure they are securely connected as shown above. To apply additional force tap gently on the end of the rail with a rubber mallet*.

*Only use a soft rubber mallet to tap on the end of the rails as other tools may damage the rail.

Fig.1

To Assemble Rail and Opener

1. Prepare the rails as shown in Fig.1.
2. Connect the rails starting with the Header Segment. Insert the tapered ends into open ends, apply any additional force necessary by tapping the Rail on padded flooring. Ensure the End Segment has Trolley Stop Bolt facing up. Make sure the rails are securely joined together as shown.
3. Slide the Trolley onto the rail from the Header Segment. Make sure the arrow is pointing towards the door as shown .
4. Insert the Rail - End Segment into the Rail Bracket on the Opener. Secure End Segment to Bracket as described on next page.

Installing the Belt

WARNING

To prevent **SERIOUS INJURY**:

- DO NOT connect power until instructed.
- Keep hands and fingers clear from sprocket during operation.
- Wear gloves when installing the belt.
- Keep hands and fingers away from joints and possible sharp edges.

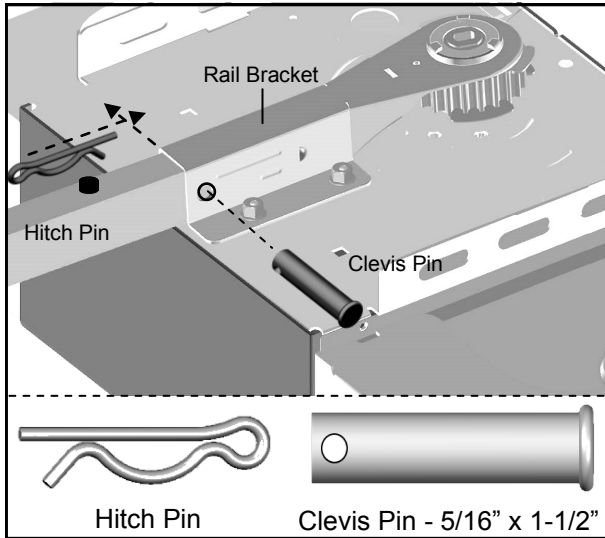


Fig.1

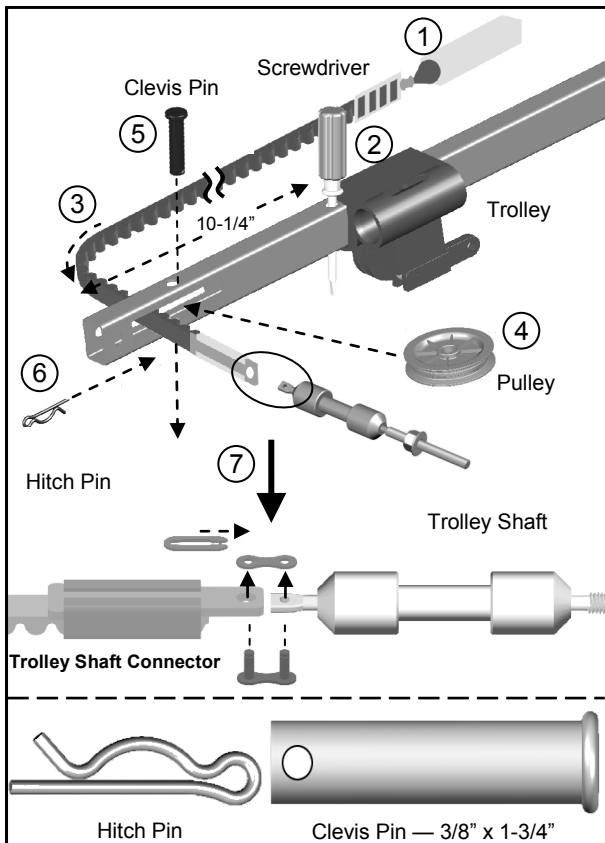


Fig.2

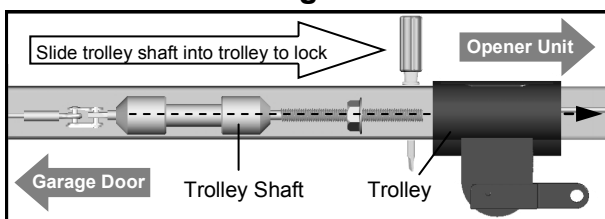


Fig.3

To Secure the Rail on the Opener

With the End Segment of the rail fully inserted into the Rail Bracket, insert a 5/16" x 1-1/2" Clevis Pin through the hole and lock it into position with a Hitch Pin as shown in Fig.1.

To Assemble the Header Section of Rail

See Figure 2 for steps 1 through 7.

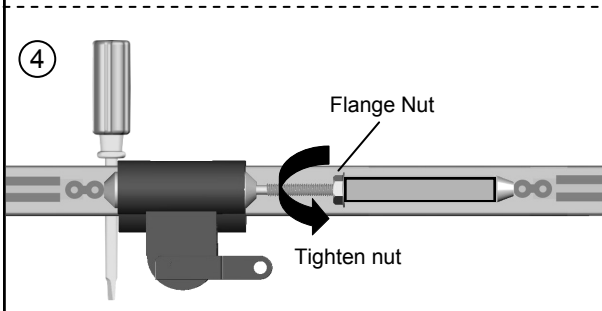
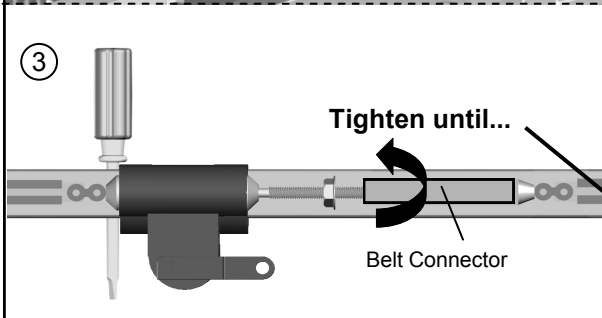
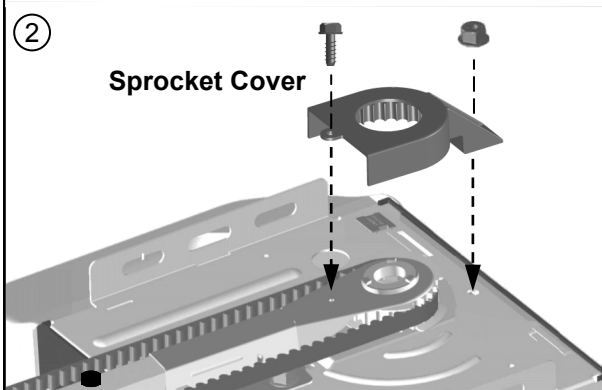
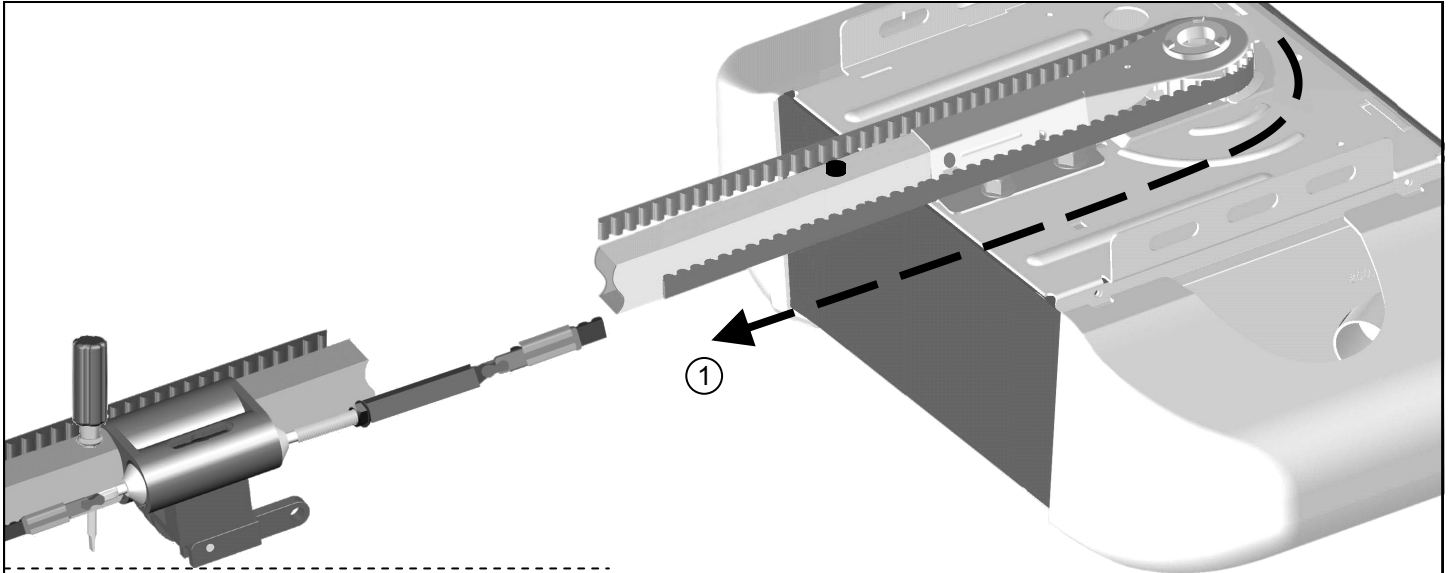
1. Place the belt beside the rail as shown
2. Insert a screwdriver into the hole approximately 10-1/4" from the end of the Rail - Header Segment. Slide the trolley against this screw driver. The trolley must stay in this position for proper alignment of the belt.
3. Pass the belt end with Trolley Shaft Connector through the slot on the Rail - Header Segment.
4. Insert the Pulley into the slot to the right of the belt.
5. Secure the Pulley by inserting the 3/8" x 1-3/4" Clevis Pin through the top of the rail.
6. Lock the Clevis Pin with a Hitch Pin. Rotate the Pulley to ensure it spins smoothly.
7. Connect the Trolley Shaft to the Trolley Shaft Connector on the belt, using the Master Link Set.
8. Slide the Trolley Shaft into the Trolley until you hear a "click" when they lock together. See Fig. 3.

Installing the Belt

WARNING

To prevent **SERIOUS INJURY**:

- DO NOT connect power until instructed.
- Keep hands and fingers clear from sprocket during operation.
- Wear gloves when installing chain/belt and cable.
- Keep hands and fingers away from joints and possible sharp edges.



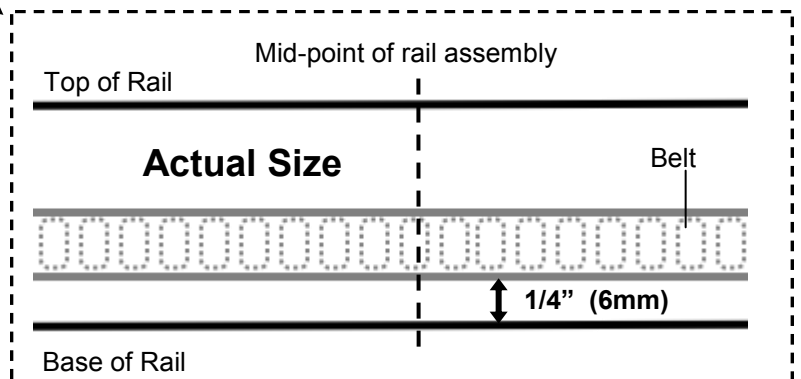
To Connect and Tension the Belt

1. With the trolley positioned against the screwdriver, pull the remaining belt straight along the rail and engage belt teeth around the sprocket. (Make sure the belt is not twisted around the rail.) See Fig. 1.
2. After the belt is connected, attach the Sprocket Cover to the opener with the screw and nut provided. See Fig. 2.

* VERY IMPORTANT! *

THE SPROCKET COVER MUST BE SECURELY INSTALLED!

3. Rotate the Belt Connector towards the Trolley Shaft until the belt is slightly loose about 1/4" (6mm) above the base of the rail. Refer to the actual-sized illustration below for proper belt tension. See Fig. 3.



4. Tighten the Flange Nut on Trolley Shaft against the Belt Connector. See Fig. 4.

Remove the screwdriver holding the trolley in position on the Rail - Header Segment.

NOTE: FOR HEAVY DOORS

For heavier doors an additional half turn to the belt connector may be required to eliminate belt slippage.

IMPORTANT INSTALLATION INSTRUCTIONS

⚠ WARNING

To reduce the risk of severe injury or death:

1. READ AND FOLLOW ALL INSTALLATION INSTRUCTIONS.
2. Install only on a properly balanced garage door. An improperly balanced door has the potential to inflict severe injury. Have a qualified service person make repairs to cables, spring assemblies, and other hardware before installing the opener.
3. Remove all ropes and remove or make inoperative all locks connected to the garage door before installing opener.
4. Where possible, install the door opener 7 feet or more above the floor. For products having an emergency release, mount the emergency release within reach, but at least 6 feet above the floor and avoiding contact with vehicles to avoid accidental release.
5. Do not connect the opener to source of power until instructed to do so.
6. Locate the push button: (a) within sight of door, (b) at a minimum height of 5 feet so small children are not able to reach it, and (c) away from all moving parts of the door.
7. Install the Entrapment Warning Label next to the wall-mount push button in a prominent location. In case the adhesive does not adhere on the surface, the label should be attached to the surface by mechanical means.



Place entrapment warning label on wall next to garage door control.

8. After installing the opener, the door must reverse when it contacts a 1-1/2-inch high object (or a 2 by 4 board laid flat) on the floor.

Mounting Header Bracket

⚠ WARNING

To prevent **SERIOUS INJURY**:

- DO NOT connect power until instructed.
- The header bracket **MUST** be **SECURELY** fastened to the structural support on the mounting wall or ceiling, otherwise the door may not reverse when required. DO NOT install the header bracket over drywall.
- Concrete anchors **MUST** be used when mounting the header bracket into masonry.
- **NEVER** try to loosen, move or adjust garage door springs, cables, pulleys, brackets, or hardware.
- Contact a qualified garage door service technician if your door binds, sticks or is unbalanced. An unbalanced door might not reverse when required.

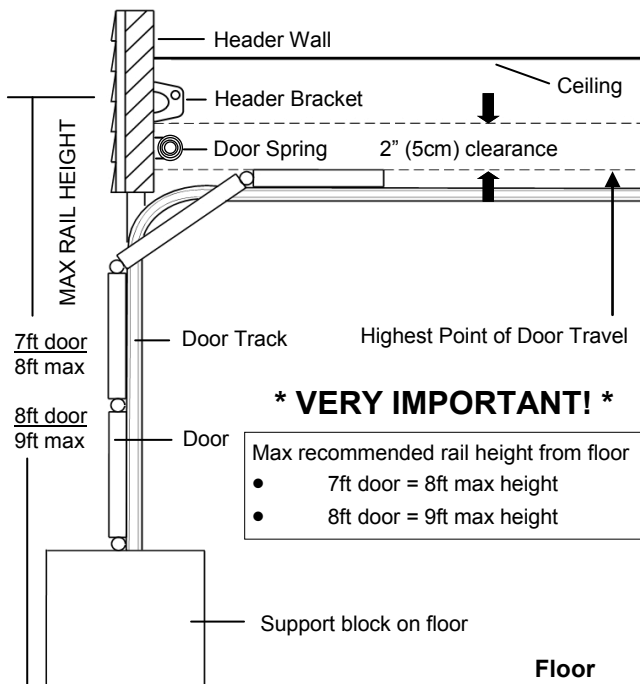


Fig.1

To Install Header Bracket

Note: Installation procedures may vary according to door type.

1. While inside your garage, close the door and mark the vertical centerline of the garage door. Extend the line onto the header wall above the door spring.
2. Open the door to the highest point of travel. Mark a line on the header wall 2" (5cm) above the highest point of travel.

Note: DO NOT install the header bracket over drywall. In some installations, it may be necessary to install a 2x4 across two wall studs to create a suitable location for the header bracket.

If installing into masonry, use concrete anchors (not provided).

Wall-Mounting

As shown in Fig.2, place the header bracket on the vertical centerline in direction shown.

Mark and drill two 3/16" holes. Fasten the header bracket securely to a structural support using two 5/16" x 1-1/2" lag screws.

Alternative Ceiling-Mounting

Ceiling-mounting is suggested **ONLY** when clearance is minimal.

Extend the vertical centerline onto the ceiling as shown in Fig.3. Center the header bracket on the vertical mark, no more than 6" (15cm) from the header wall. Mark and drill holes to fasten the header bracket securely to a structural support.

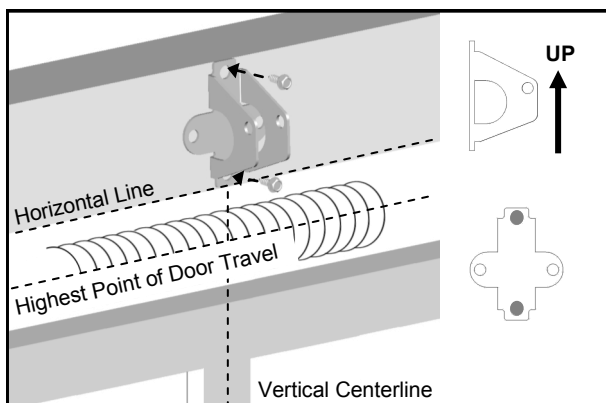


Fig.2 (Wall-Mounting)

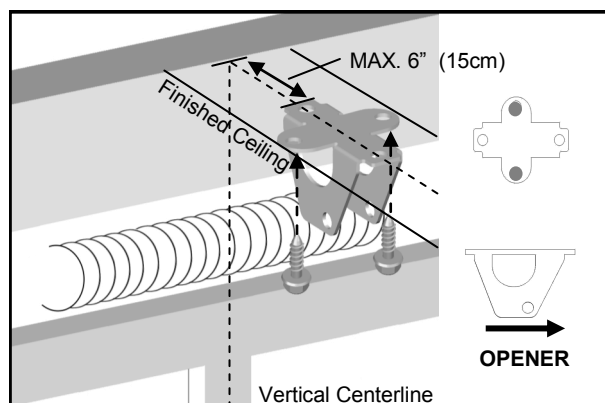
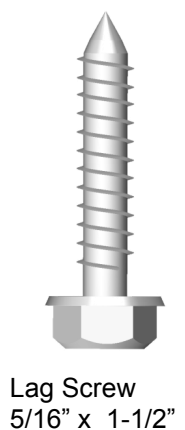


Fig.3 (Ceiling-Mounting)



Attaching Rail to Header Bracket and Mounting Door Bracket

CAUTION

To prevent **SERIOUS INJURY**:

- DO NOT connect power until instructed.
- Horizontal and vertical **REINFORCEMENT** is needed for fiberglass, aluminum or lightweight steel garage doors **BEFORE** installing the door bracket. Contact your door manufacturer for reinforcement options.

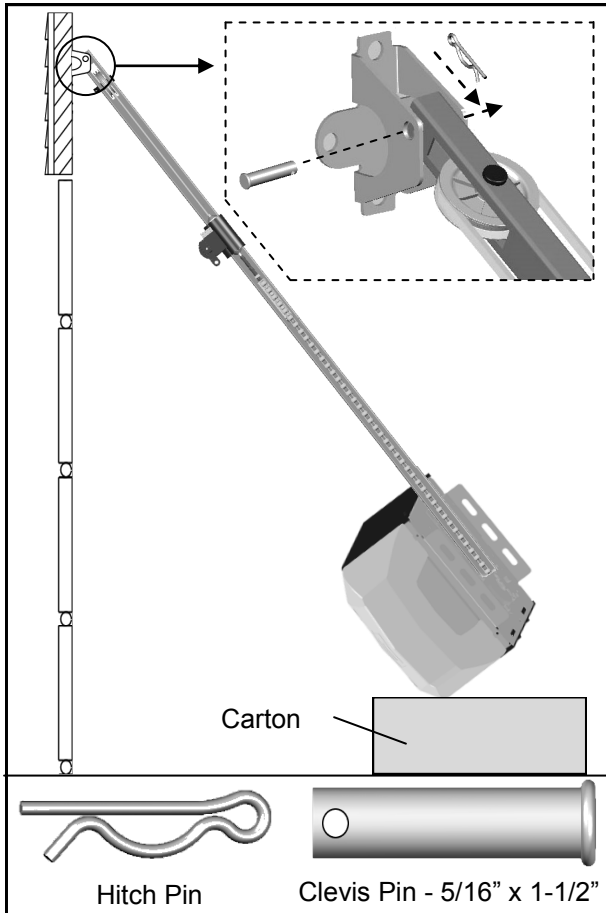


Fig.1

To Attach the Opener to the Header Bracket

1. As shown in Fig.1, use the packaging carton as temporary support for the opener. Place the opener on carton to prevent damage.
2. Align the mounting hole on the header rail to the mounting hole on the Header Bracket.
3. Connect the header rail and the door bracket together with a $5/16'' \times 1-1/2''$ clevis pin and lock it in place with a hitch pin.

To mount the Door Bracket

Note: Some door reinforcement kits may provide direct attachment of the door arm to the reinforcement bracket. If you have a door reinforcement bracket with this option, skip this step and proceed with the next step “mounting opener to ceiling”.

1. Position the door bracket on the centerline of the door approximately 2” - 4” (5-10cm) below the top edge of the door, as shown in Fig.2.
2. Depending on the construction of your door, install using one of the steps shown if Fig. 3 below:

For lightweight steel doors, with factory equipped vertical steel reinforcement and horizontal strut.

(a) Mark and drill two $3/16''$ holes. Make sure not to drill through the garage door. Secure the door bracket with two $1/4'' \times 5/8''$ self-threading screws (provided) as shown in Fig.3(a).

(b) Alternative installation: Drill two $5/16''$ holes through the door. Secure the door bracket using two $5/16''$ bolts, lock washers and nuts (not provided) as shown in Fig.3(b). The length of bolts will depend on the thickness of your door.

Wood door

(c) Mark and drill two $5/16''$ holes through the garage door. Secure the door bracket using two $5/16''$ carriage bolts, washers and nuts (not provided) as shown in Fig.3(c). The length of bolts will depend on the thickness of your door.

Note: DO NOT use Self-Threading Screws on a wood door.

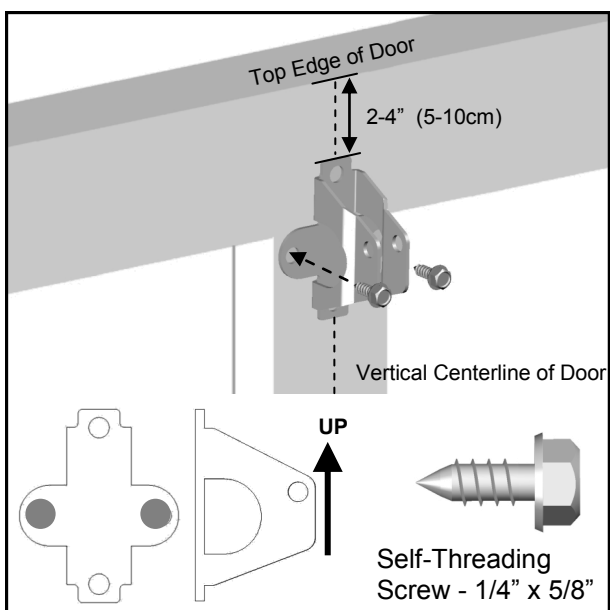


Fig.2

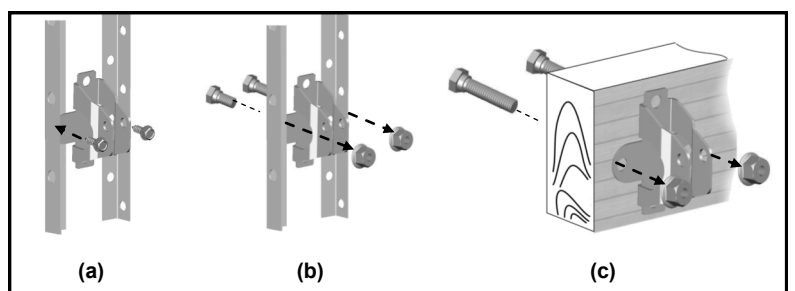


Fig.3

Mounting Opener to Ceiling

WARNING

To prevent SERIOUS INJURY or DEATH:

- DO NOT connect power until instructed.
- Install the opener at least 7 feet (2.13m) above the floor.
- Fasten the opener SECURELY to STRUCTURAL SUPPORTS of the garage to prevent falling.
- If installing brackets to masonry, concrete anchors (not provided) MUST be used.

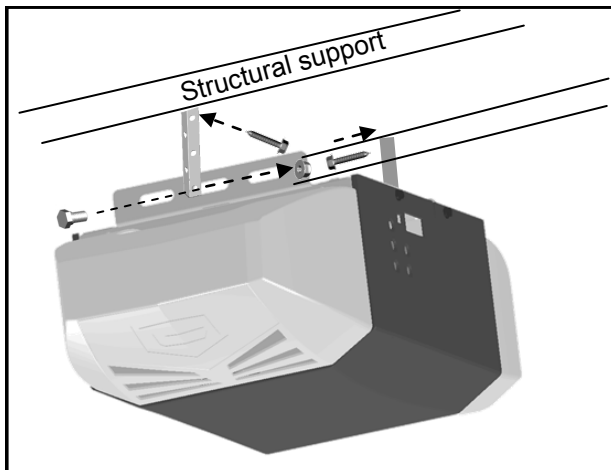


Fig.1

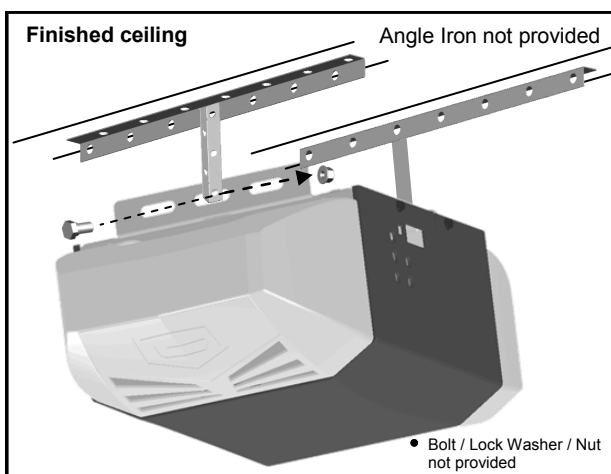


Fig.2

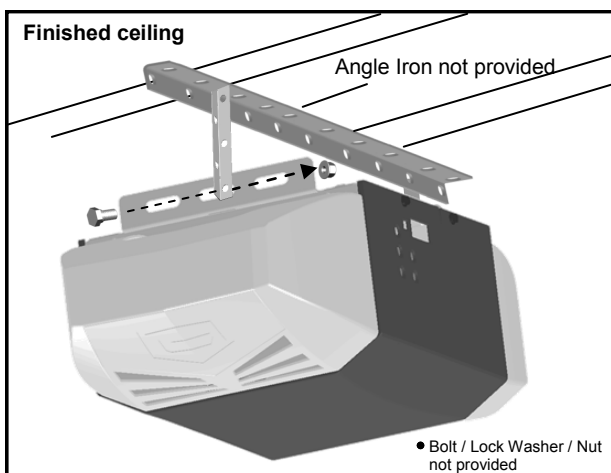


Fig.3

To Mount the Opener to Ceiling

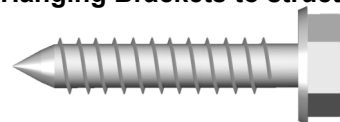
The three most common installation options are shown in Fig.1-3.

Fig.1 shows mounting the opener directly to structural support on the ceiling. Fig.2 and 3 show mounting on a finished ceiling, with heavy duty angle iron*. *(angle iron not included)

Determine the mounting option that works best for your application and follow installation steps below:

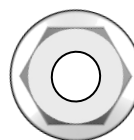
1. Raise the opener and rail assembly and temporarily place it on a stepladder.
2. Position the opener and rail assembly so that it is aligned to the center line of the garage door. If the header bracket was mounted off center, align the opener with the header bracket.
3. Measure the distance from each side of the opener to the structural supports.
4. Cut both hanging brackets to appropriate length.
5. Drill 3/16" holes in the structural supports.
6. Secure one end of each of the hanging brackets to the structural supports using 5/16" x1-1/2" lag screws (provided).
7. Secure the opener to the hanging brackets and secure each side with a 5/16" x 1" bolt and flange nut (provided).
8. Move the door manually to check clearance between highest point of travel of the door and rail. If the door hits the rail, raise the header bracket or adjust the mounting of opener.
9. Remove the ladder ONLY when the opener is securely mounted to the structural supports.

Fastening Hanging Brackets to structural supports

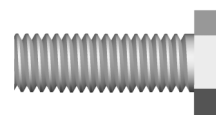


Lag Screw 5/16" x 1-1/2"

Securing Opener to Hanging Brackets



Flange Nut



Bolt 5/16" x 1"

Attaching Door Arms

WARNING

To prevent **SERIOUS INJURY**:

- DO NOT connect power until instructed.
- Keep hands and fingers away from the sprocket during operation.
- Wear gloves when installing chain and cable.
- Keep hands and fingers away from joints and possible sharp edges.



NOTE: The trolley must be a minimum of 8" (20cm) away from the pulley.

To Connect Door Arm

Follow the steps shown in Fig. 1

1. Fasten the straight door arm to the trolley with a 5/16" x 1" clevis pin and lock it with a hitch pin.
2. Fasten the curved door arm to the door bracket with 5/16" x 1" clevis pin and lock it with a hitch pin.
3. To connect the door arms together, choose two pairs of holes which are as far apart as possible. Fasten the arms using two 5/16" x 1" bolts and flange nuts.

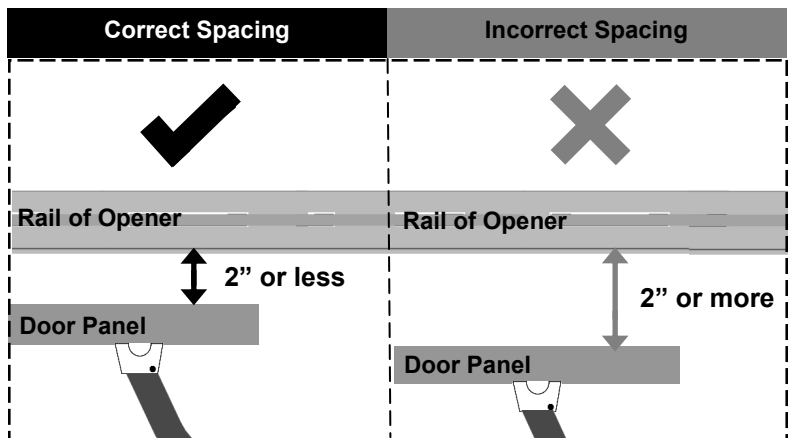
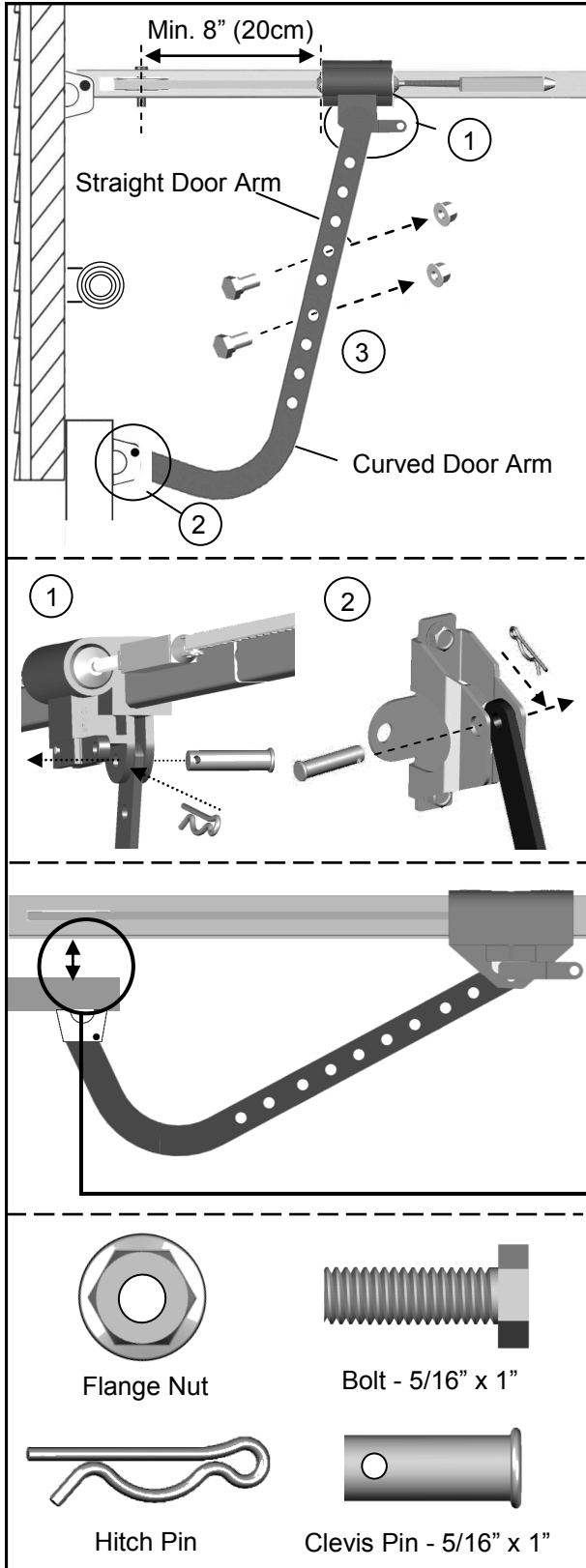


Fig.1

Installing Light and Emergency Release Handle

WARNING

To prevent **SERIOUS INJURY** or **DEATH** from electrocution:

- Disconnect power cord before installing/replacing light bulb.

To prevent possible **OVERHEATING** or damage to opener:

- Use **ONLY** A19 (E26) incandescent bulbs* (100W max.).

- **DO NOT** use short neck or specialty light bulbs.

- **DO NOT** use halogen bulbs.

* CFL or LED light bulbs will work but may interfere with hand-held remotes.

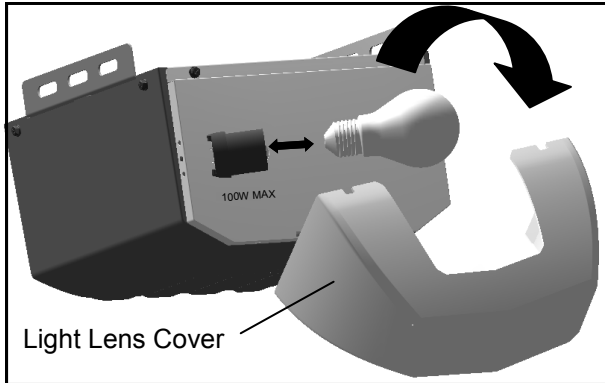


Fig. 1

To install the light:

1. Insert screw driver between lens and the cover at the detents, pry and pull the light lens cover from the top and detach it from the opener.
2. Install a standard A19 (E26) 100 watt maximum light bulb.
3. Re-attach the light lens cover.

Notice

When replacing the light bulb, make sure the bulb on the opener has cooled down to prevent injury.

WARNING

To prevent **SERIOUS INJURY** or **DEATH** from a falling garage door:

- In case of power failure or door obstruction, **PULL EMERGENCY HANDLE** to release door from opener.

- When emergency release is in the released position, the door can be operated manually.

- To reconnect, flip the lever on the trolley towards opener, back to connect position, it will reconnect automatically upon pressing push button or remote control.

- **DO NOT** use emergency handle to pull the door open or closed.

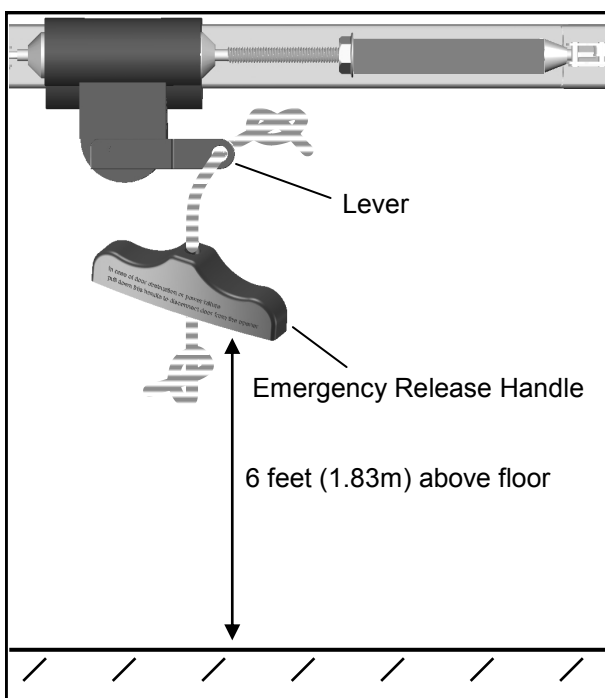


Fig. 2

To attach the Emergency Release Handle:

1. Thread one end of the rope through the hole of the emergency release handle and secure with an overhand knot.
2. Thread the other end of the rope through the hole in the trolley lever.
3. Measure the rope length so that the handle is 6 feet (183cm) above the floor and is clear from the top of your vehicle. Secure with an overhand knot.

*** VERY IMPORTANT! ***

Emergency release handle must clear all vehicles. An emergency release handle set too low may get caught by the vehicle and cause damage to the door and opener. Measure from the floor to the top of your vehicle and set the emergency release handle above this measurement.

Wiring Instructions

WARNING

To prevent **SERIOUS INJURY** or **DEATH** from electrocution:

- Power **MUST NOT** be connected until instructed.
- **NO** exposed part of the wire should be visible outside of the terminal for proper connection.



* **VERY IMPORTANT!** *

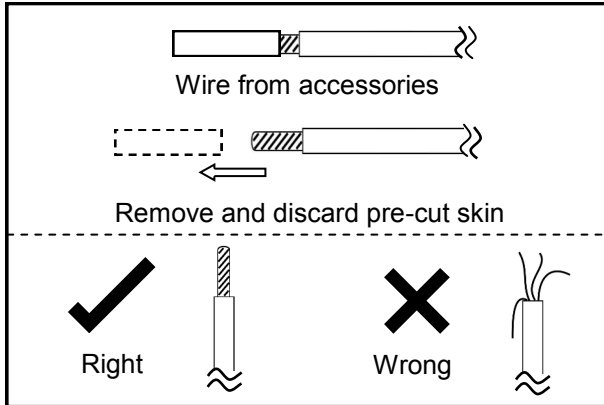


Fig. 1

In the following section, the photo eye safety system and push button will be connected to the opener. Please read and understand the wiring instructions before connecting wires.

1. Remove the pre-cut skin on the open end of wire from accessories. Wires **MUST NOT** be frayed. Wires must be connected as shown in Fig.1.
2. To connect a wire to an assigned terminal, use a small “flat head” screwdriver to push in the orange tab on the Wire terminal as shown in Fig.2.
3. Insert approximately 1/2” (13mm) of the wire into the terminal while pushing in the tab as shown in Fig.2.
4. Each accessory requires a pair of terminals. Each pair of terminals **MUST** be connected with one white wire and one striped wire (non-polarized) from the **SAME** accessory as shown in Fig.2.
5. Check for proper connection by gently pulling on the wire. The wire should not come out of the terminal. **NO** exposed part of the wire should be visible outside of the terminal.
6. Use the insulated staples provided to secure the wires to the wall and/or ceiling. Be careful not to damage the wires while securing the staples.

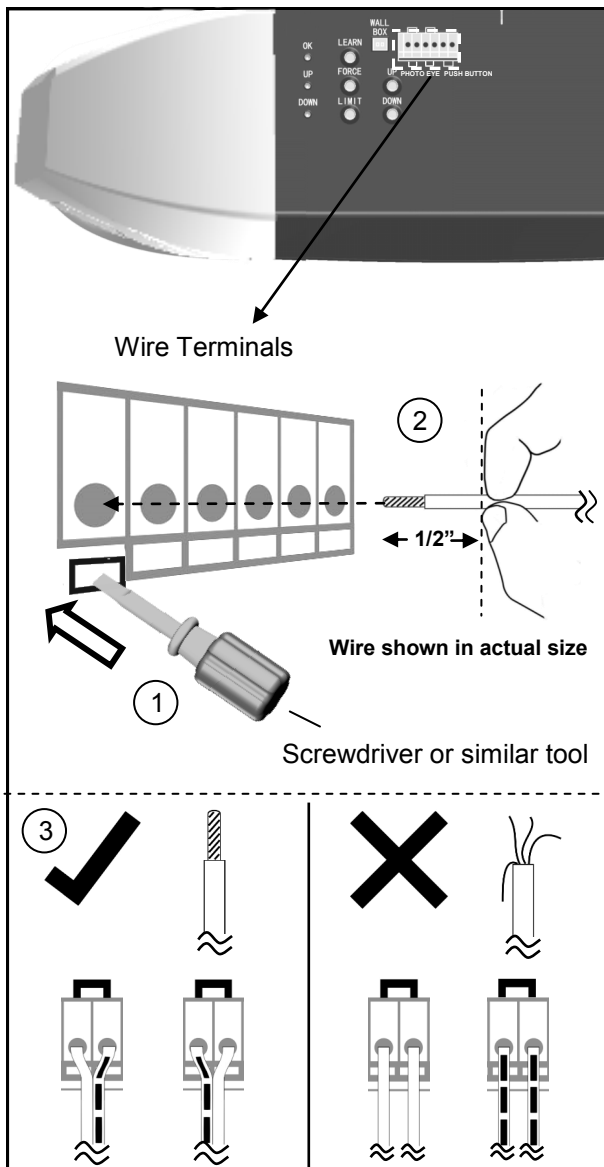
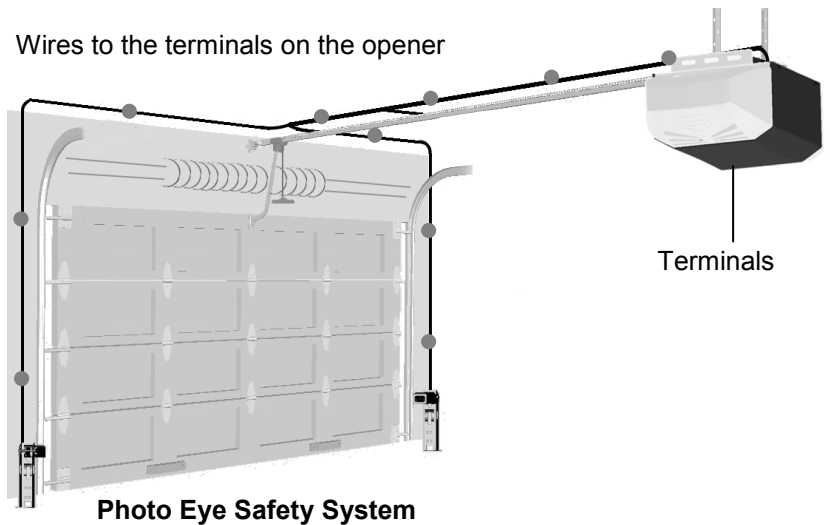


Fig. 2



 Suggested placement of insulated staples



Connecting Photo Eye Safety System

WARNING

To prevent **SERIOUS INJURY** or **DEATH** from electrocution:

- Power **MUST NOT** be connected **BEFORE** photo eye safety system is connected and aligned.
- The opener will not operate until the photo eye safety system is properly connected and aligned.
- Install the photo eyes **NO** higher than 6" (15cm) above the floor.

No part of garage door or other objects should obstruct the photo eye safety system during door-closing.



NOTICE: The opener will not close until the photo eyes are installed. Photo eyes are required by federal law to be installed on all openers.

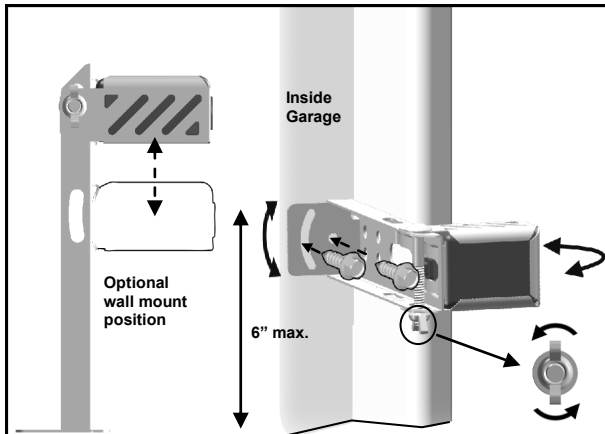


Fig. 1 (Wall Mount)

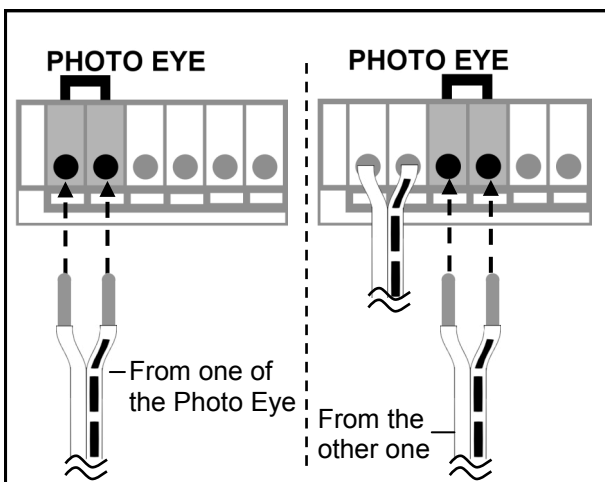
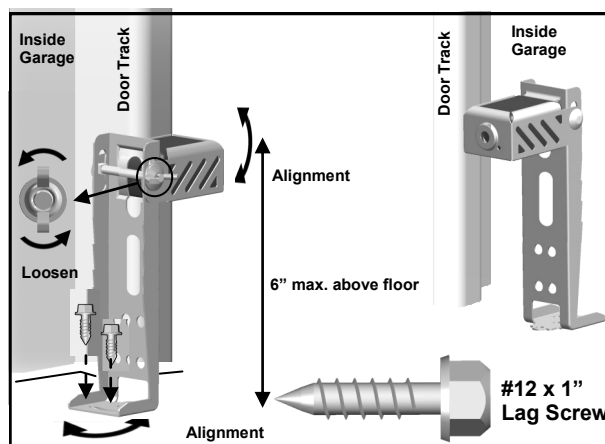


Fig. 3

About the Photo Eye Safety System

The photo eye safety system provides protection against entrapment while the door is closing. When properly connected and aligned, the emitter photo eye emits an invisible infrared light beam while the sensor photo eye monitors that beam.

If the beam is obstructed during door-closing, the entrapment protection will be triggered and the door will stop and reverse to the open position. The courtesy light will flash for 30 seconds indicating an obstruction.

Installing The Photo Eye Safety System

Wall-mounting

1. Place the photo eyes facing each other on each side of the garage door. Position the sensors so they are no higher than 6" (15cm) above the floor, as shown in Fig.1.
2. Drill 3/16" holes using the mounting holes on the bracket as a template. Secure with #12 x 1" lag screws (provided).
3. Be sure brackets, when mounted, are **NOT** in contact with the door track.
4. If necessary use the optional wall-mount position (Fig.1) to better fit your door-track and improve obstacle avoidance. To adjust the position, loosen the wing nut, disassemble the bracket and move the photo eye to the lower position on the holder.
5. If necessary, align the photo eyes by loosening the wing nut. (This step may be further required in **Aligning the Photo Eye Safety System** on page 17.)

Alternative Floor-mounting

1. Place the photo eyes facing each other on each side of the garage door, as shown in Fig.2.
2. If attaching to concrete, secure the photo eyes using concrete anchors and bolts (not provided).
3. Be sure brackets, when mounted, are **NOT** in contact with the door track.
4. If necessary, align the photo eyes by loosening the wing nut. (This step may be further required in **Aligning the Photo Eye Safety System** on page 17.)

To Connect Photo Eye Safety System

1. Connect a pair of wires from either one of the photo eyes to a pair of "PHOTO EYE" terminals on the rear of the opener as shown in Fig. 3. Refer to **Wiring Instructions** on page 14 for proper connections.
2. Repeat above step to connect the other photo eye.
3. Refer to **Wiring Instructions** on page 14 to ensure wires are connected properly.

Connecting Door Control Console

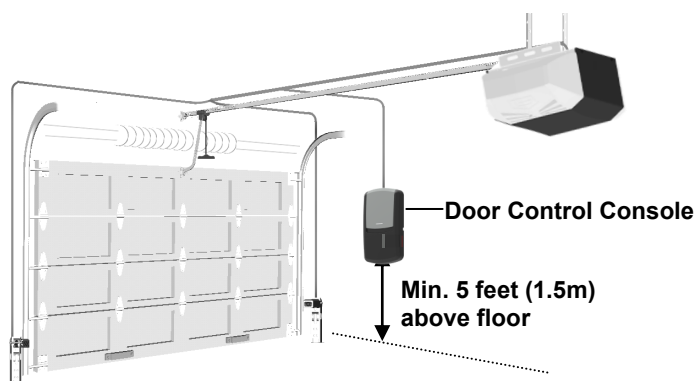
WARNING

To prevent **SERIOUS INJURY** or **DEATH** from electrocution:

- Power **MUST NOT** be connected until instructed.

To prevent **SERIOUS INJURY** or **DEATH** from using the push button and a closing door:

- Install the push button within sight of the door at a minimum height of 5 feet (1.5m) above the floor. Make sure it is out of the reach of children and moving parts of door and hardware.
- **NEVER** permit children to access the door control console or remote controls.
- Operate the door **ONLY** when it is adjusted properly with no obstructions present and is in clear sight.
- **ALWAYS** keep a moving door in sight until it's completely closed.
- **NEVER** cross the path of a moving door.



The Door Control Console is a wired, illuminated door control placed inside your garage.

Door Control Console Installation

- Inside your garage, install the control console within sight of the door at a minimum height of 5 feet (1.5 m) above the floor.
 - Ensure that the console is installed out of reach of children and is free from contact with moving parts of the door.
 - Install the console onto a solid mounting surface. If mounting to drywall, drill 3/16" holes and use provided drywall anchors.
1. Hold the console against the mounting surface and mark the console bottom hole position on the surface.
 2. Remove the console from the surface. Drill a 5/32" pilot hole at the mark. Install the bottom screw into the surface. Allow 1/8" of the screw to protrude above the surface. Position bottom hole on back of console over the screw and slide console down into place.
 3. Lift the console actuation cover to expose the top screw hole. Mark the top screw hole position on the mounting surface. Remove the console from the surface and drill a 5/32" pilot hole at the mark.
 4. Position bottom hole on back of console over the bottom screw and slide console down into place. Install the top screw through the top screw hole and into the mounting surface.

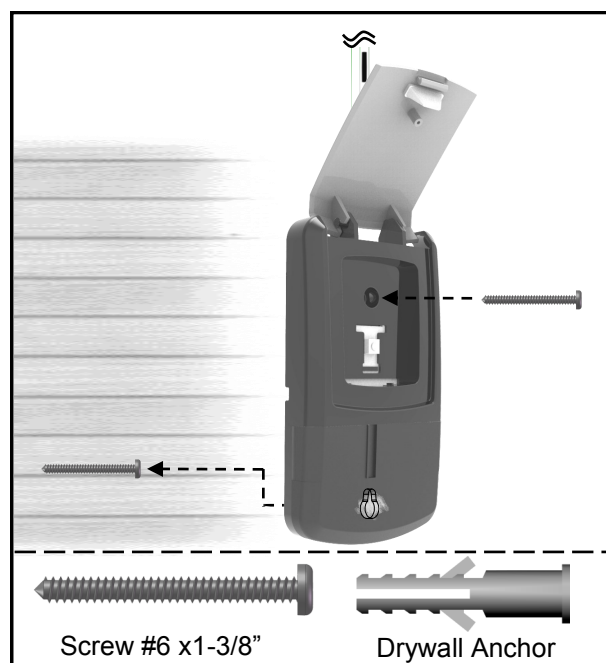


Fig. 1

To Connect the Door Control Console to the Opener

Connect the plug from the Door Control Console to the "Wall Panel" outlet on the rear of the Opener, as shown in Fig.2.

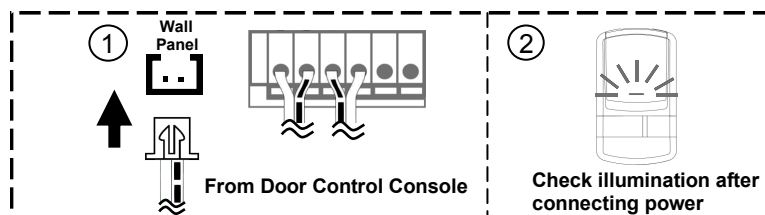


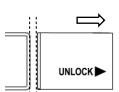
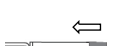



Fig. 2

Using the Door Control Console

(ONLY after installation is completed)

-  **Door** — Press and release to access the door
-  **Light** — Turns the courtesy light On/Off
-  **Vacation Lock**
-  **Unlock** — Door can be accessed by either Door button or controls
-  **Lock** — Prevent access of door by any controls and Door button.

Connecting Power

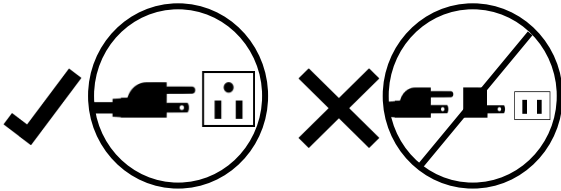
WARNING

To prevent **SERIOUS INJURY** or **DEATH** from electrocution or fire:

- Power **MUST** be **DISCONNECTED BEFORE** proceeding with permanent wiring procedures.
- Garage door opener installation and wiring **MUST** be in compliance with all local electrical and building codes. Make sure the opener is **ALWAYS** grounded.
- **NEVER** use an extension cord, 2-wire adapter or modify the power plug in any way to make it fit the outlet.



Ordinary Power Connection



DO NOT OPERATE OPENER AT THIS TIME.

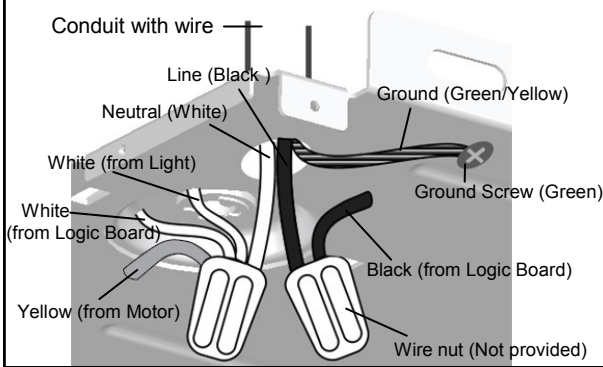
To Connect Power

Plug the opener into a grounded outlet **ONLY**. If there is no grounded outlet present, call a qualified electrician to replace the outlet. Use of a surge protector is highly recommended.

Permanent Wiring (If Required by Local Code)

1. Remove the enclosure by removing the 6 screws located on the sides and rear of the opener.
2. Cut the two cable pressure connectors connecting line (black) and neutral (white) wire from the power cord.
3. Remove the grounding screw connecting the green wire.
4. Remove the power cord.
5. Group neutral (white) wires from power source with 2 white wires from light cable, and logic board, and yellow wire from motor, inside the opener. Connect them with a wire nut.
6. Group line (black) wires from power source with another black wires from logic board inside the opener. Connect them with a wire nut.
7. Secure the ground (green or bare) wire from the power source with a grounding screw.
8. Reinstall the enclosure.
9. Turn on power supply. If the wiring is properly connected, a "click" should be heard and the light will illuminate (if a bulb is installed). If there is no response from the opener, check power source and wiring.

For Permanent Wiring **ONLY**



Aligning the Photo Eye Safety System

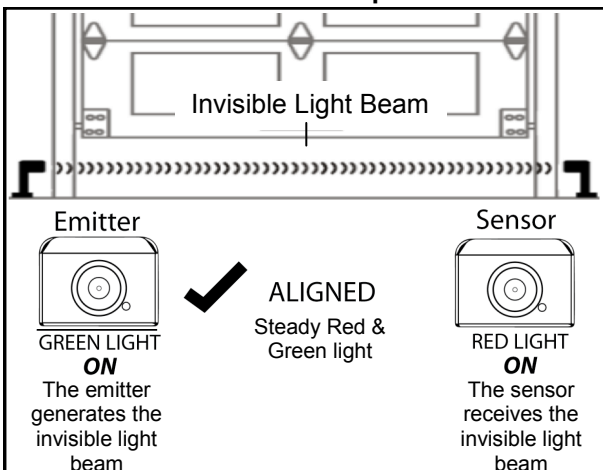
WARNING

To prevent **SERIOUS INJURY** or **DEATH** from a closing garage door:

- The photo eye safety system **MUST** be installed **BEFORE** connecting power.
- The photo eye safety system **MUST** be properly connected and aligned **BEFORE** operating the opener.



NOTICE: The opener will not close until the photo eyes are installed. Photo eyes are required by federal law to be installed on all openers.



Aligning the Photo Eye Safety System:

1. When power is supplied, the green photo eye (Emitter) will flash until it is aligned with the red photo eye (sensor). The red photo eye will not light until it is aligned with the green eye.
2. When the photo eye system is properly aligned the green photo eye (emitter) will emit a steady green light and the red photo eye (sensor) will emit a steady red light.
3. If either of the photo eye lights are unsteady, flash or dim, check for an obstruction and carefully adjust the position of the photo eyes until they give a steady green light and steady red light.

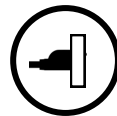
Note: The path of the invisible light beam **MUST NOT be obstructed. No part of the garage door or any hardware should interfere or block either sensor.**

Travel Limit Adjustment— I. UP Limit

WARNING

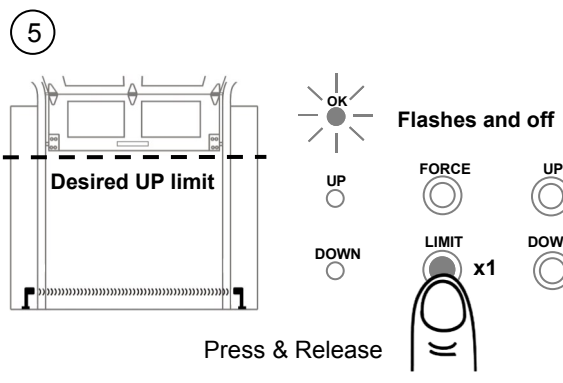
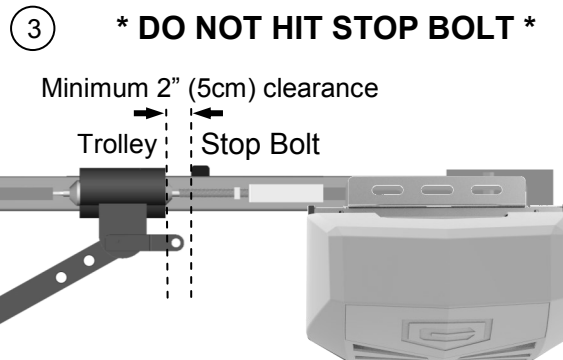
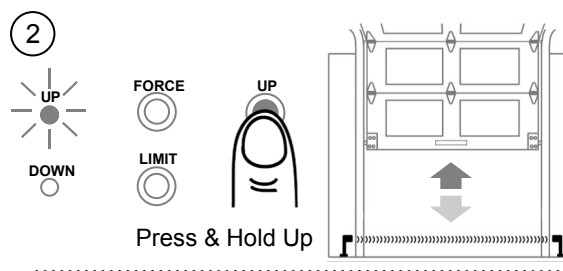
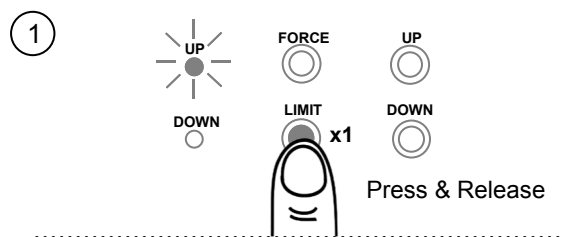
To prevent **SERIOUS INJURY** or **DEATH** from improper Force Adjustment:

- **YOU CANNOT** adjust force manually to compensate for binding or sticking of the garage door. Call a qualified garage door service person to make necessary adjustments in case of binding.
- **YOU CANNOT** manually increase the force required for closing the door.
- After **ANY** adjustments, Safety Reverse Test **MUST** be performed to ensure the door reverses on contact with a 1.5" high object (2x4 laid flat).



NOTICE: This opener will not work until you set the travel limits and the auto force adjustment. You must follow all steps on pages 18,19,20.

I. Setting UP Limit



About Travel UP Limit Adjustment

Travel "UP" Limit Adjustment regulates the fully-open (UP limit) position. This step will program how far the opener will open the garage door.

Make sure the trolley is engaged, photo eyes are installed P.15 and photo eyes are aligned P.17 before proceeding with adjustments.

I. Setting Travel UP Limit

1. Press and Release "LIMIT" button **ONCE** to enter Travel Limit Adjustment. "UP" indicator (green) will turn on*.
*NOTE: Once you have pressed and released the "Limit" button, the "UP" light will stay on for 10 seconds. You must press & hold the "UP" button within 10 seconds to begin programming. If the "UP" light turns off before pressing and holding the "UP" you will need to start over.
2. **With green indicator on**, press & hold the "UP" button, the door will travel up. You may use both "UP" or "DOWN" buttons to inch-adjust the door to the desired UP limit position.
3. **DO NOT HIT STOP BOLT!** There is a minimum 2" (5cm) gap between Trolley and Stop Bolt.
4. Make sure there is enough clearance for your vehicle(s), to enter and exit the garage door.
5. Once the door is at the desired UP limit position, press and release "LIMIT" button once, "OK" indicator (orange) flashes and goes off. The UP limit is set.

Continue to page 19 for down limit

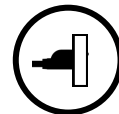


Travel Limit Adjustment— II. DOWN Limit

WARNING

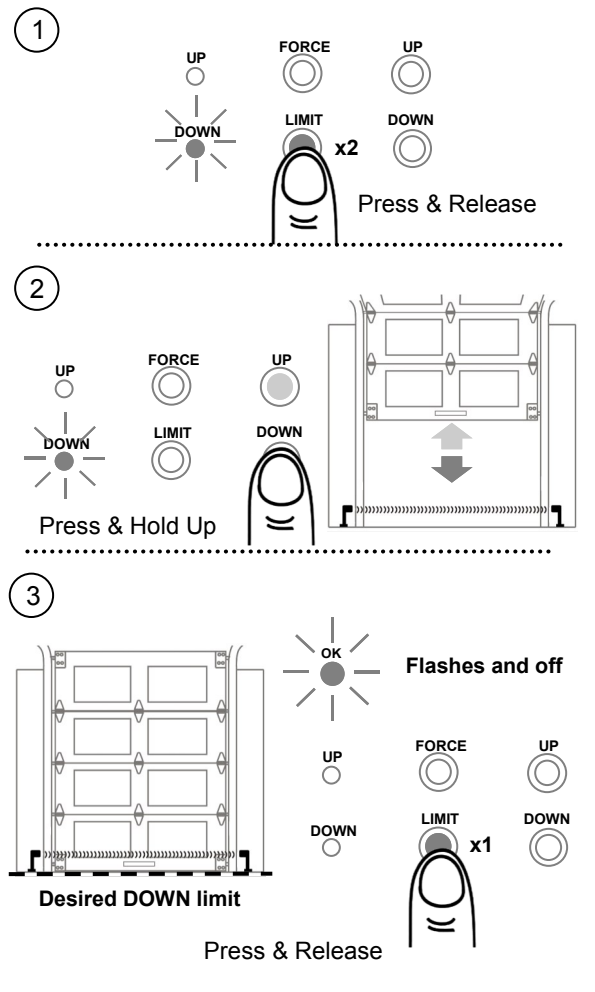
To prevent SERIOUS INJURY or DEATH from improper Force Adjustment:

- YOU CANNOT adjust force manually to compensate for binding or sticking of the garage door. Call a qualified garage door service person to make necessary adjustments in case of binding.
- YOU CANNOT manually increase the force required for closing the door.
- After ANY adjustments, Safety Reverse Test MUST be performed to ensure the door reverses on contact with a 1.5" high object (2x4 laid flat).



NOTICE: This opener will not work until you set the travel limits and the auto force adjustment. You must follow all steps on pages 18,19,20

II. Setting DOWN Limit



CAUTION: WHILE SETTING THE DOWN LIMIT, CAREFULLY WATCH DOOR TRAVEL DISTANCE. RELEASE BUTTON WHEN THE DOOR MAKES CONTACT WITH THE GROUND!

About Travel DOWN Limit Adjustment

Travel “DOWN” Limit Adjustment regulates the fully-closed (DOWN limit) position. This step will program how far the opener will close the garage door.

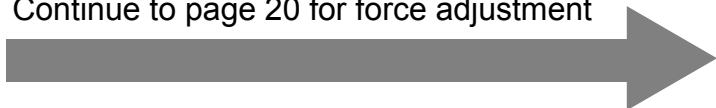
Make sure the trolley is engaged, photo eyes are installed P.15 and photo eyes are aligned P.17 before proceeding with adjustments.

I. Setting Travel DOWN Limit

1. Press and Release “LIMIT” button **TWICE** to enter Travel Limit Adjustment. “DOWN” indicator (red) will turn on*.
*NOTE: Once you have pressed and released the “Limit” button twice, the “DOWN” light will stay on for 10 seconds. You must press & hold the “DOWN” button within 10 seconds to begin programming. If the “DOWN” light turns off before pressing and holding the “DOWN” you will need to start over.
2. **With red indicator on**, press & hold the “DOWN” button, the door will travel down. You may use both “UP” or “DOWN” buttons to inch-adjust the door to the desired DOWN limit position.
3. Once the door is at the desired DOWN limit position, press and release “LIMIT” button once, “OK” indicator (orange) flashes and goes off. The DOWN limit is set.

Both “UP” and “DOWN” (green and red) indicators are now on, indicating that both UP and DOWN limits are set, and the opener is ready for Auto Force Adjustment, see Page 20.

Continue to page 20 for force adjustment



Auto Force Adjustment

WARNING

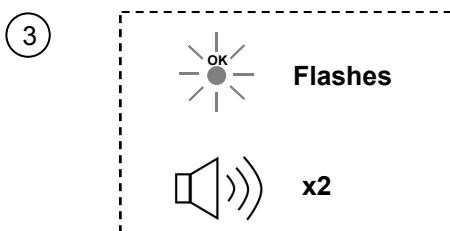
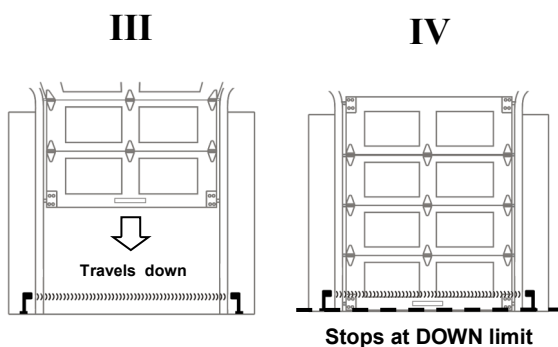
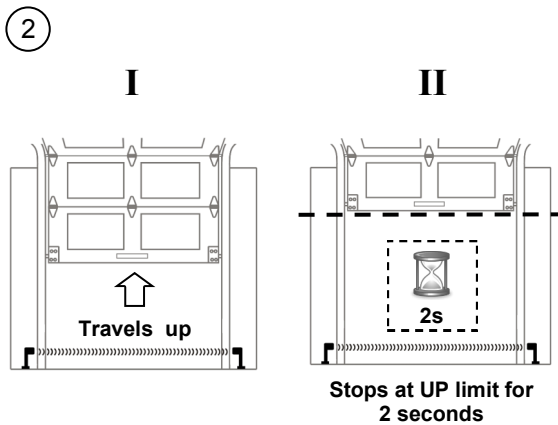
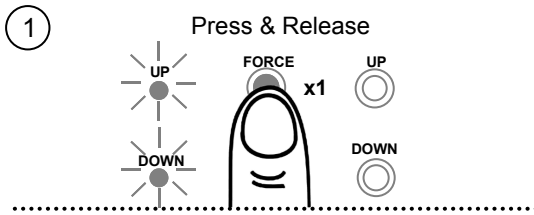
To prevent **SERIOUS INJURY** or **DEATH** from improper Force Adjustment:

- **YOU CANNOT** adjust force manually to compensate for binding or sticking of the garage door. Call a qualified garage door service person to make necessary adjustments in case of binding.
- **YOU CANNOT** manually increase the force required for closing the door.
- After **ANY** adjustments, Safety Reverse Test **MUST** be performed to ensure the door reverses on contact with a 1.5" high object (2x4 laid flat).



NOTICE: This opener will not work until you set the travel limits and the auto force adjustment. You must follow all steps on pages 18,19,20

Auto Force Adjustment



Following limit-setting, the unit is now ready to automatically adjust the forces for opening and closing the door. The door will automatically open and close. The opener is measuring the weight of the door and the force that is required to open and close the garage door. Proceed with the following steps to complete adjustment.

Make sure the trolley is engaged, photo eyes are installed P.15 and photo eyes are aligned P.17 before proceeding with adjustments.

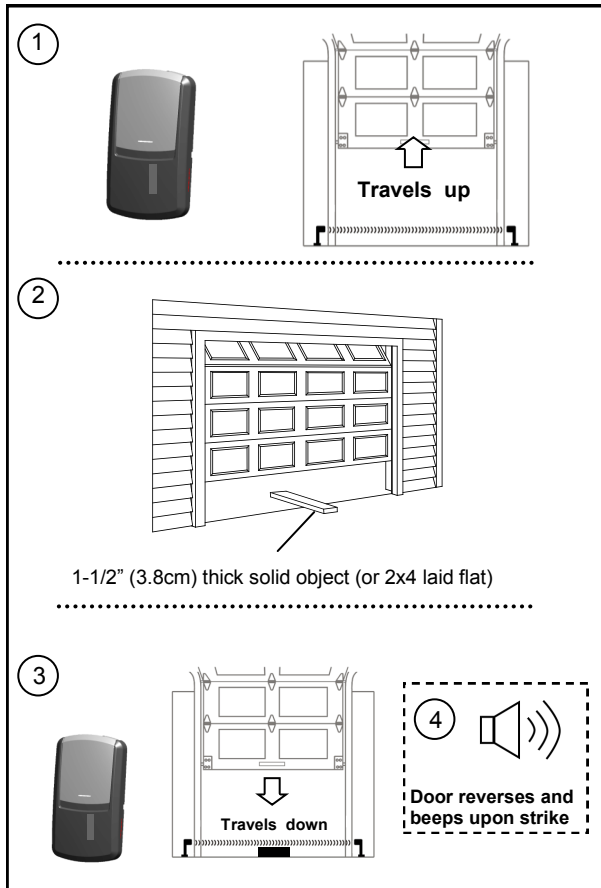
1. With both "UP" and "DOWN" indicators on after Travel Limit Adjustment, press and release the "FORCE" button once to enter Auto Force Adjustment.
2. The door will travel up **automatically** (I) and stop at UP limit for 2 seconds (II). Door will then travel down **automatically** (III) and stop at down limit (IV).
3. The "OK" indicator (orange) will flash with beeps, the Auto Force Adjustment is completed.

Final Adjustments and Testing

WARNING

To prevent **SERIOUS INJURY** or **DEATH** from a closing garage door:

- The Safety Reversal Test **MUST** be conducted **ONCE A MONTH**.
- **NO ONE** should cross the path of moving door during operation and/or testing.
- If either force or travel limit adjustment is made, the other adjustment may also be needed.
- After **ANY** adjustments to the door system, the Safety Reverse Test **MUST** be performed to ensure the door reverses on contact with a 1-1/2" thick (2x4 laid flat) object.
- The photo eye safety system **MUST** be properly aligned, and tested regularly.



Testing the Safety Reverse System

The Safety Reverse System prevents the door from closing when an obstruction is present.

1. Open the door by using the large push button or remote
2. Place a 1-1/2" (3.8cm) thick solid object (or 2x4 laid flat) on floor under the center of garage door.
3. Keeping the door in sight, use the push button or remote to close the door.
4. The door **MUST REVERSE** upon striking the object within 1.5 seconds, and stop at the fully opened position.
5. The courtesy light will start flashing for 30 seconds upon triggering the Safety Reverse System.

If the door just stops on the object, adjust the opener as follows:

The close travel maybe inadequate, Increase close travel limit by 1/4 turn (See **Limit Adjustment** on page 18, 19)

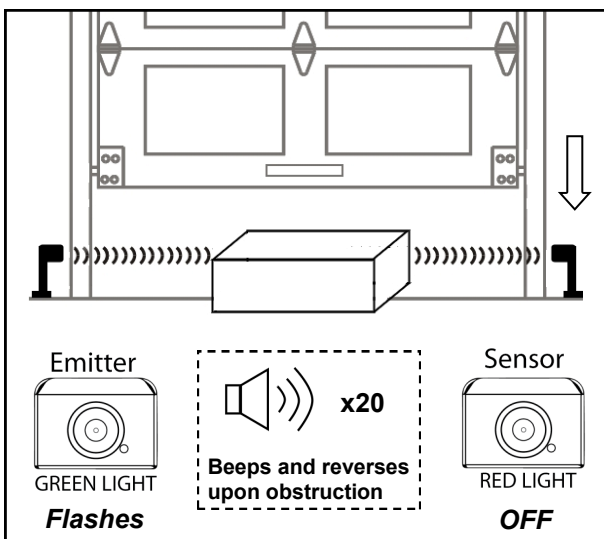
Conduct the test again. If the door reverses on contact, remove the object and run at least 3 **COMPLETE** travel cycles to ensure proper adjustment.

If the door still does not reverse on the object, decrease the close force (see **Force Adjustment** on page 20) and repeat the test.

If the opener still fails the safety reverse test, call a qualified technician for door adjustment.

Testing the Photo Eye Safety System

1. Open the door by using the large push button or remote
2. Make sure both photo eyes steadily emit the green and red indicator lights. (If not, check alignment)
3. Place an object under the door about 8" (20cm) high by 12" (30cm) wide (the opener carton can be used),
4. The green indicator light on the emitter eye should flash and red and the red indicator light on the sensor eye should be dimmed.
5. Keep the door in sight and use the push button or remote to try to close the door.
6. The door should **NOT** move more than 1" (2.5cm) and the opener will beep and flash 20 times.



Programming 3-Button Remote

WARNING

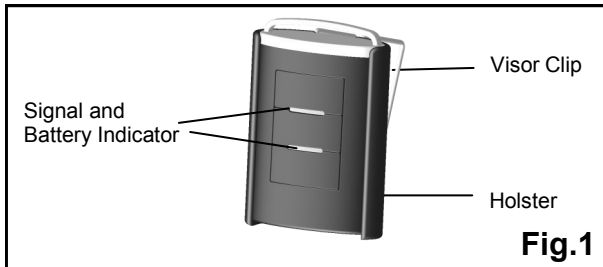
To prevent **SERIOUS INJURY** or **DEATH**:

- Keep remote and battery out of reach of children.
- **NEVER** permit children to access the wall panel nor remotes.
- Operate the door **ONLY** when it is properly adjusted, and there are no obstructions present.
- **ALWAYS** keep a moving door in sight until completely closed. **NEVER** cross the path of a moving door.



To reduce risk of fire, explosion or electric shock:

- **DO NOT** short circuit, recharge, disassemble or heat the battery, batteries may explode or leak.
- **NEVER** allow small children near batteries.
- Replace with 27AE 12 volt batteries **ONLY**. Dispose of batteries properly.



To Program Transmitter(s):

1. Press/release the "LEARN" button on the rear control panel, "OK" LED will glow and beep. The unit is now ready to accept a transmitter in the next 30 seconds as shown in Fig.2.
2. Press/release the large grey button on the Transmitter.
(Additional buttons used for multiple garage door openers)
3. The "OK" LED will flash and beep twice indicating transmitter is stored successfully.

Up to 20 Transmitters (including wireless keypad codes) can be added to the unit by repeating the above procedures.

If more than 20 Transmitters are stored, the first stored Transmitter will be replaced. (i.e. the 21st Transmitter replaces the 1st stored Transmitter.)

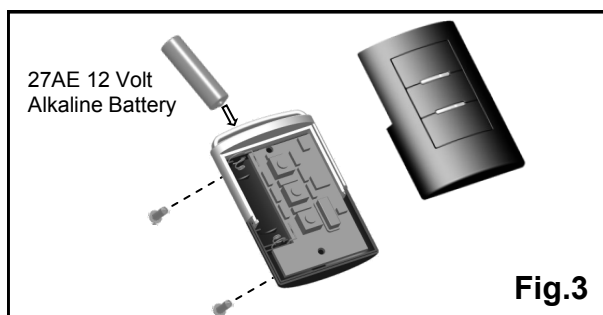
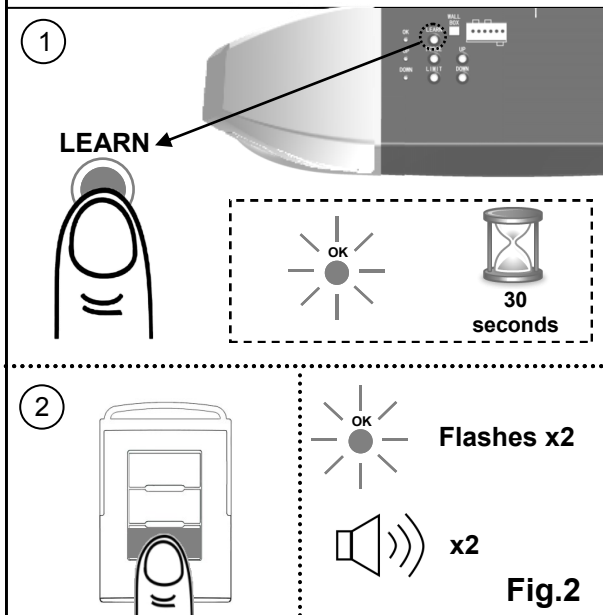
Note: After backup battery has been installed--slide the battery up to remove the battery from the holster to access the LEARN button to program new remote controls. Remove the holster to read programming instructions printed on the opener's back panel next to the programming buttons.

Removing ALL Transmitters:

To remove ALL Transmitters from memory, press and hold the "LEARN" button for 5 seconds. The "OK" LED will flash and beep 2 times indicating ALL transmitters have been removed from memory.

Replacing Remote Battery:

When the battery of the hand held remote is low, the indicator light will become dim and/or the range of the remote will diminish. To replace the battery, remove the battery cover from the remote as shown in Fig 4. Replace with a 27AE 12 volt alkaline battery with polarity shown in Fig.4.



Warning: Changes or modifications to this unit not expressly approved by the party responsible for compliance could void the user's authority to operate the equipment.

NOTE: This equipment has been tested and found to comply with the limits for a Class B digital device, pursuant to Part 15 of the FCC Rules. These limits are designed to provide reasonable protection against harmful interference in a residential installation. This equipment generates, uses and can radiate radio frequency energy and, if not installed and used in accordance with the instructions, may cause harmful interference to radio communications.

However, there is no guarantee that interference will not occur in a particular installation. If this equipment does cause harmful interference to radio or television reception, which can be determined by turning the equipment off and on, the user is encouraged to try to correct the interference by one or more of the following measures:

- Reorient or relocate the receiving antenna.
 - Increase the separation between the equipment and receiver.
 - Connect the equipment into an outlet on a circuit different from that to which the receiver is connected.
- Consult the dealer or an experienced radio/TV technician for help.

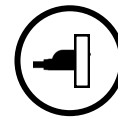
Programming Wireless Keyless Entry Keypad

To purchase a wireless keyless entry keypad, visit a Craftsman outlet, call 1-888-331-4569, or go online

WARNING

To prevent SERIOUS INJURY or DEATH:

- Keep remote and battery out of reach of children.
- NEVER permit children to access the wall panel, push button nor remotes.
- Operate door only when it is adjusted properly with no obstructions to door travel and is in clear sight.
- ALWAYS keep a moving door in sight until completely closed. NO ONE should cross the path of a moving door.



To reduce risk of fire, explosion or electric shock:

- DO NOT short circuit, recharge, disassemble or heat the battery, batteries may explode or leak.
- Replace with 1.5 volt AAA batteries ONLY. Dispose of batteries properly.

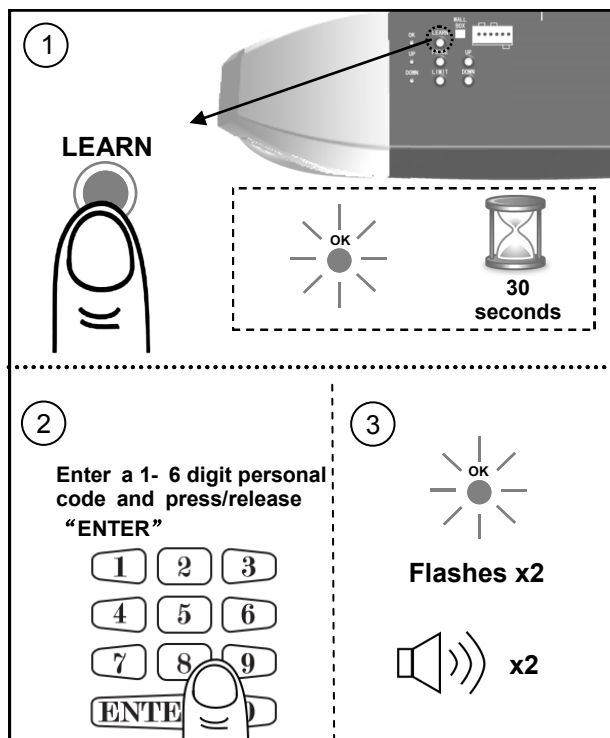


Fig.1

Note: After backup battery has been installed--slide the battery up to remove the battery from the holster to access the LEARN button to program new remote controls. Remove the holster to read programming instructions printed on the opener's back panel next to the programming buttons.

To Add Personal Codes:

1. Press the "LEARN" button on the rear control panel, "OK" LED will glow and beep. The unit is ready to accept a keypad code in the next 30 seconds as shown in Fig.1.
2. Enter a 1 - 6 digit personal code on the keyless entry within 30 seconds and press/release "ENTER" button. "OK" LED will flash and beep twice indicating personal code is stored in memory.

Up to 20 personal codes (including 1-button remotes) can be added to the unit by repeating the above procedures.

If more than 20 personal codes are stored, the previously stored one from the very beginning will be replaced, (i.e. the 21st code replaces the 1st stored one.)

Operation:

To access the door, enter a pre-stored personal code and press "ENTER" to transmit code, and within 20 seconds, "ENTER" button can be used to stop or reverse the door.

If the code is entered incorrectly, correction can be made by pressing "ENTER" to reset and re-enter code.

When dark, "ENTER" may be pressed in advance to turn on back light.

Removing ALL Personal Code(s):

To remove ALL personal code(s) and/or transmitters from memory, press and hold the "LEARN" button for 5 seconds. "OK" LED will flash and beep, indicating ALL codes/transmitters have been removed from memory.

Mounting the Keyless Entry:

Keyless entry may be secured on door jamb face outside your garage. Locate keyless entry within sight of door at minimum height of 5 feet (1.5m), ensure it is away from reach of children and moving parts of door and hardware. Test the reception of the keyless entry before mounting. Change location for better reception if necessary.

Use the mounting holes on the keyless entry as template to mark position on the mounting surface. To attach to a wooden surface use the screws provided. In case of a drywall surface, drill holes and use drywall anchors provided.

Replacing Keyless Entry Battery:

When the battery of keyless entry is low, dimmed illumination is observed. To replace battery, remove the battery cover by loosening the screws underneath, and replace the battery with two 1.5 volt AAA batteries.

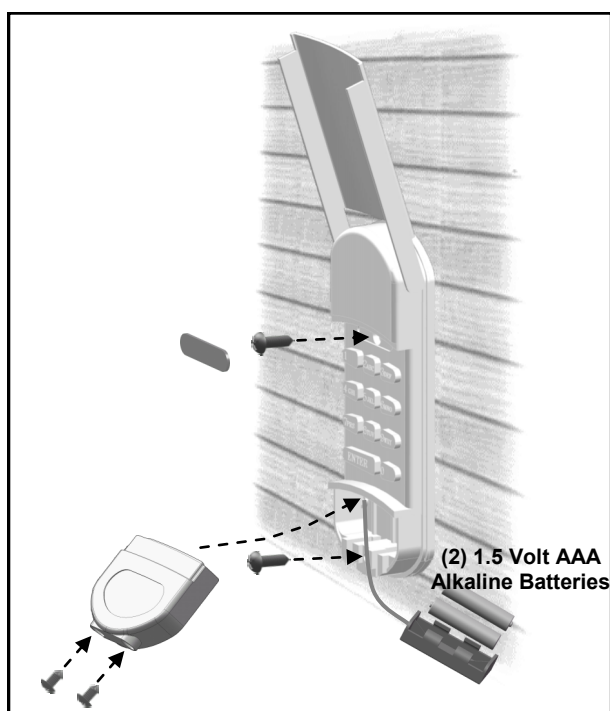


Fig.2

IMPORTANT SAFETY INSTRUCTIONS

WARNING

To reduce the risk of severe injury or death:

1. READ AND FOLLOW ALL INSTRUCTIONS.
2. Never let children operate or play with door controls. Keep the remote control away from children.
3. Always keep the moving door in sight and away from people and objects until it is completely closed. **NO ONE SHOULD CROSS THE PATH OF THE MOVING DOOR.**
4. **NEVER GO UNDER A STOPPED, PARTIALLY OPEN DOOR.**
5. Test door opener monthly. The garage door **MUST** reverse on contact with a 1-1/2-inch high object (or a 2 by 4 board laid flat) on the floor. After adjusting either the force or the limit of travel, retest the door opener. Failure to adjust the opener properly increases the risk of severe injury or death.
6. Use the emergency release only when the door is closed. Use caution when using this release with the door open. Weak or broken springs are capable of increasing the rate of door closure and increasing the risk of severe injury or death.
7. **KEEP GARAGE DOORS PROPERLY BALANCED.** See owner's manual. An improperly balanced door increases the risk of severe injury or death. Have a qualified service person make repairs to cables, spring assemblies, and other hardware.

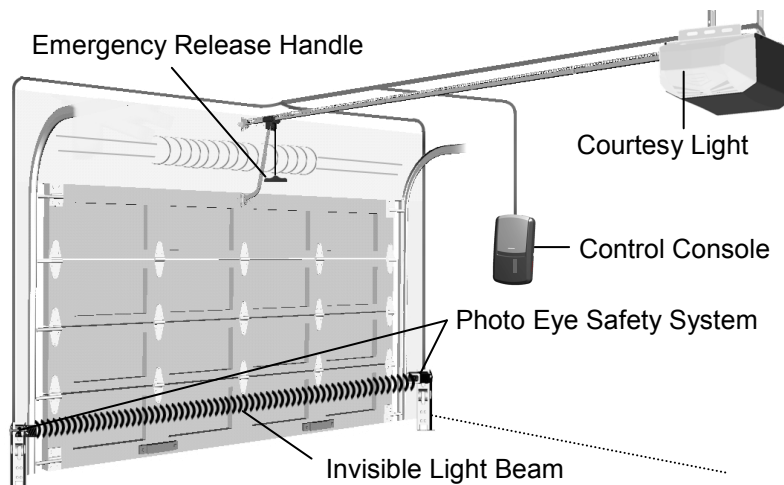
SAVE THESE INSTRUCTIONS.

Operating the Opener

WARNING




To prevent **SERIOUS INJURY** or **DEATH**:

- **READ AND FOLLOW ALL INSTRUCTIONS AND WARNINGS IN THE OWNER'S MANUAL AND LABELS**
- Keep remote and battery out of reach of children.
- **NEVER** permit children to access the door control console or remotes.
- Operate the door **ONLY** when it is properly adjusted, and there are no obstructions and is in clear sight.
- **ALWAYS** keep a moving door in sight until completely closed. **NEVER** cross the path of a moving door.
- If travel limit adjustment is made, force adjustment may also be needed.
- After **ANY** adjustments, the safety reverse test **MUST** be performed to ensure the door reverses on contact with a 1-1/2" thick object (2x4 laid flat).
- **ALWAYS** ensure that your door is balanced and in good working condition.



Actual Operating Scenario


Activating the Opener

Controls	Operation
 <p>Door Control Console (Indoor)</p>	<p>Press and hold the push button until the door starts to move, and controls as follows:</p> <ul style="list-style-type: none"> - Open or close the door. - Reverse the door while it is closing - Stops the door while it is opening. - Close the door when the photo eye safety system is not installed, misaligned or obstructed INTENTIONALLY.
 <p>3-Button Mini Remote Control</p>	<p>Remote distance up to 100 ft. in open field. For safety concerns, the hand-held remote WILL NOT work if the photo eye safety system is not properly installed and aligned.</p>
 <p>Wireless Keyless Entry Keypad</p>	<p>Program the keyless entry pad accordingly and access the door using the PIN code.</p>

Door Status vs. Activation

DOOR STATUS vs REMOTE CONTROL ACTIVATION	
IF DOOR IS...	ON ACTIVATING REMOTE CONTROL...
Fully closed	Door will move to fully open position
Fully opened	Door will move to fully closed position
Closing	Door will reverse
Opening	Door will stop moving
Stopped as intended in partially open position	Door will close
Obstructed while closing	Door will reverse while flashing courtesy light
Obstructed while opening	Door will stop
Fully opened and photo eye system is obstructed	Door will not close

Courtesy Light / Buzzer Responses

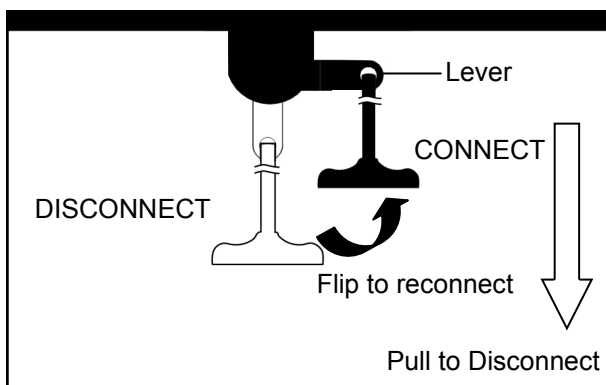
Operation / Condition	 Courtesy Light / Audible Responses
Opener is initially plugged-in (no travel limits stored)	Flash x 5
Reconnecting power (with travel limits stored)	Flash x 3
"LEARN" button is pressed	Beep x 1
Upon activation	Light On for 4.5 minutes
Upon activation by remote controls	Beep x 1, Light On for 4.5 minutes
Remote Control / Keyless Entry PIN code accepted	Beep x 2
Opener is operated without programming	Beep x 5
Door travels with abnormal speed	Beep x 12 (1 beep / second)
Photo Eye System is obstructed during door-closing	Beep x 20
The door is obstructed during travel	Beep x 25

Manual Operation

WARNING

To prevent SERIOUS INJURY or DEATH:

- Use emergency release to disconnect trolley ONLY when the door is CLOSED to prevent unexpected rapid falling in case of a unbalanced / poor-conditioned door.
- Use emergency release ONLY when doorway is clear of persons and obstructions.
- DO NOT use emergency release to pull the door open or closed.



In case of a power failure or door obstruction, PULL EMERGENCY handle to release door from opener.

To Disconnect Trolley for Manual Operation

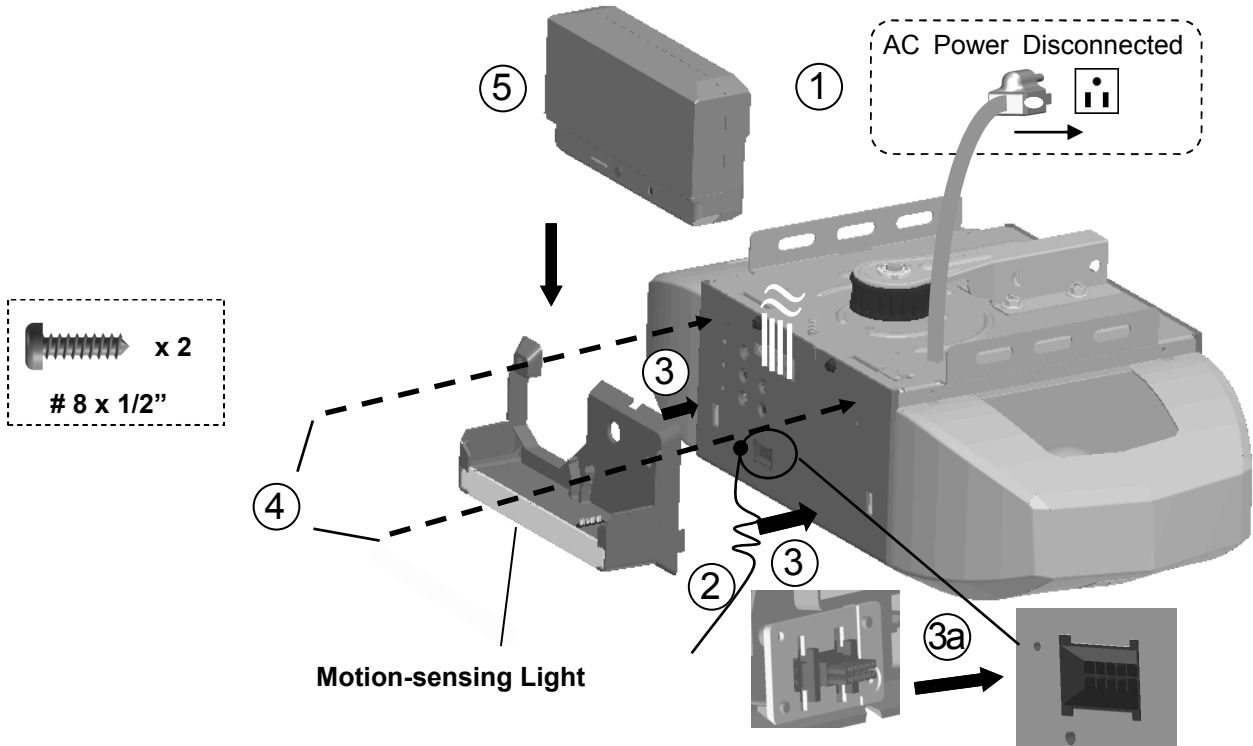
With the door closed, pull down the emergency release handle to the DISCONNECT position. The door can be raised / lowered manually.

To Re-connect Trolley

Pull the handle toward the opener so that the lever will flip up to the CONNECT position. The trolley will reconnect itself when the opener is activated or when the door is manually opened/closed.

Backup Battery Installation

The backup battery is continually charged when the opener is plugged into an electrical receptacle. During a power outage the charged battery enables you to use the opener.

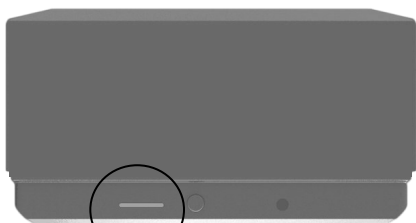


Installing the Backup Battery:

1. Unplug the power cord from the electrical outlet.
2. Ensure that the antenna wire hangs down from the opener so it will be positioned at the location of the slot on the lower left side of the holster.
3. Align the tabs on each side of the holster with the slots in the opener's back panel. Push the holster into the opener. The holster plug will be inserted into the connector in the opener. See 3a.
4. Secure the holster to the opener at the points shown with two #8 x 1/2" screws provided.
5. Slide the backup battery down into the holster. Be sure that it is seated securely.
6. Plug the opener's power cord back into the electrical outlet.
7. Proceed to testing procedures on page 20.

Note: After backup battery has been installed--slide the battery up to remove the battery from the holster to access the LEARN button to program new remote controls. Remove the holster to read programming instructions printed on the opener's back panel next to the programming buttons.

Battery and Status Indicator



Status
Red Green

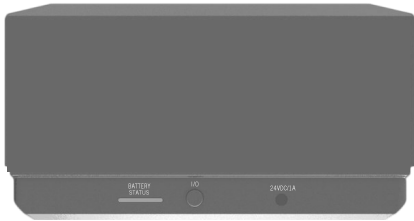
Legend	
	LED off
	LED glows steadily
	LED flashes

Power mode	Status Indicators	Description
AC120V mains		Battery is fully charged
		Battery is being charged
Power outage (Battery mode)		Opener is powered by battery
		Opener is operating with battery
		Battery is low

Note: The opener will run at a slower speed when powered only by the battery.

Backup Battery Features

Features



- LED indicators showing the battery and status.
- Built-in protection features: over current protection; short circuit protection, overload protection, over-voltage protection, over-charge protection.
- DC power jack for pre-charging or recharging with a plug-in transformer.

Specification

Dimension (L x W x H)	7.2" x 3.9" x 1.7"
Fully Charge Time	Suggested 24 hours
Recharging Input (DC Jack)	24VDC/1A
Cycle life	Approx. 300 cycles
Operation Temperature	14°F - 122°F (-10°C-50°C)

WARNING

1. RISK OF EXPLOSIVE GASES:

- To reduce risk of battery explosion, follow ALL instructions and warnings on the battery pack
2. DO NOT touch eyes while working near batteries.
 3. NEVER smoke or allow a spark or flame in the vicinity of battery or engine.
 4. DO NOT drop ANY metal tools onto the battery. It might spark or short-circuit battery or other electrical part that may cause explosion.
 5. NEVER wear watches, rings, bracelets, or necklaces when working with car batteries. Batteries can produce a short-circuit current high enough to weld a ring or the like to metal, causing a severe burn.

Motion-Sensing Light



Motion and Ambient Light Sensor

LED Courtesy Light

The Motion-Sensing Light feature:

- The backup battery holster is equipped with a motion detection sensor. The sensor will turn on the LED courtesy light when ambient light is low and motion is detected. The light will remain on for several minutes.
- During a power outage, the LED courtesy light will turn on automatically upon door operation or when ambient light is low.

Maintenance

Schedule	Maintenance
Once a month	Door balance test, refer to page 4. Safety reverse test, refer to page 21
Twice a year	Check belt tension (refer to page 6-7 for adjustment if necessary).
Once a year	- Limit and force adjustment may be necessary due to weather conditions. Refer to pages 18-20 for adjustment. Conduct safety reverse test after ANY adjustments. - Lubricate door rollers, bearings and hinges. The Opener is permanently lubricated, DO NOT lubricate or grease the Opener, rail or door tracks.

Troubleshooting

TROUBLESHOOTING: Status - Courtesy Light Flashes	
3-Flashes	Power reconnected to opener with travel limits learned and stored <ul style="list-style-type: none"> Door should open/close on command.
5-Flashes	Power connected to opener without travel limits learned and stored <ul style="list-style-type: none"> Program the opener limits. <i>Note: Opener will not program without photo-eyes properly installed.</i> <i>(Refer to pages 18-20 to check the travel limits & travel force).</i>
COURTESY LIGHT STAYS ON for 4.5 min.	Upon activation <ul style="list-style-type: none"> Door will open/close on command.

TROUBLESHOOTING: Status & Diagnostic Chart - Beeps	
1 BEEP Learn remote control code	"LEARN" button is pressed <ul style="list-style-type: none"> Proceed to program remote controls. <i>(Refer to page 22 to program remote)</i>
1 BEEP & LIGHT ON 4.5 minutes Remote control code received	Remote control has activated the Opener <ul style="list-style-type: none"> Door should open/close.
2 BEEPS Confirmation of learned code	Remote control/keyless entry PIN code accepted <ul style="list-style-type: none"> Remote control has been programmed. If door does not operate, check deluxe door control console (if applicable) And switch vacation mode to off position.
5 BEEPS Command sent, but operator has not been programmed	SYMPTOM: Door does not open. <ul style="list-style-type: none"> Program or reprogram the opener limits. <i>(Refer to pages 18-20 to check the travel limits & travel force).</i>
12 BEEPS Door travels with abnormal speed	SYMPTOM: Door travels too fast , too slow or not at all. <ul style="list-style-type: none"> Opener may not be using the proper force to open and close the door. <i>(Refer to pages 18-20 to check the travel limits & travel force).</i> SYMPTOM: During limit learn mode, if door travels only 1" to 28" then stops. <ul style="list-style-type: none"> Check RPM encoder connections or replace RPM encoder (call service tech) Please contact Guardian Tech Support for further assistance.
20 BEEPS Photo Eye System is obstructed during door-closing	SYMPTOM: Opener does not close door & door reverses. Red and/or green LED indicators do not illuminate or one photo eye LED flashes. <ul style="list-style-type: none"> The photo eye may be obstructed, improperly aligned or installed. A staple may have cut through the photo eye wire and caused a short circuit <i>(Refer to page 17)</i>
25 BEEPS The door is obstructed during travel	SYMPTOM: The door reverses upon touching the floor or stops in the up direction and the courtesy light flashes <i>(Refer to pages 18-20 to reset the travel limits and the travel force)</i> Please contact Guardian Tech Support for further assistance. SYMPTOM: Door travels 1" to 12" then stops, and beeps 25 times <ul style="list-style-type: none"> Remote soft settings and reset Up/Down and Force limits.

Troubleshooting

TROUBLESHOOTING: Status & Diagnostic Chart - beeps

SYMPTOM: Opener does not respond to remote control.

- Check remote control battery.
- Program remote control.
- **2 Beeps:** 'Vacation Lock' may be activated on deluxe control (if installed) *(Refer to page 22 to program remote control)*

SYMPTOM: Opener stops before reaching full open/closed position.

- Travel Limit is not properly adjusted.
Check adjustment (Conduct safety reverse test after ANY adjustment).
(Refer to pages 18-20 to reverse test & travel force)
- If door is obstructed or force setting related, please count the BEEPS and refer to the **"TROUBLESHOOTING: Diagnostic Chart - Beeps"** (Page 27).

SYMPTOM: Door reverses unintentionally.

- Make sure the photo eye safety system is aligned and clear of obstructions.
- A door spring that has relaxed, door or track alignment that has changed or a sudden change in temperature could create the phantom obstruction sensed.
(Refer to pages 18-20 to check the travel limits & travel force)
- Check for a broken door spring
(Refer to page 4 to check the door balance)
- Call a qualified service technician to check the door or replace the spring.

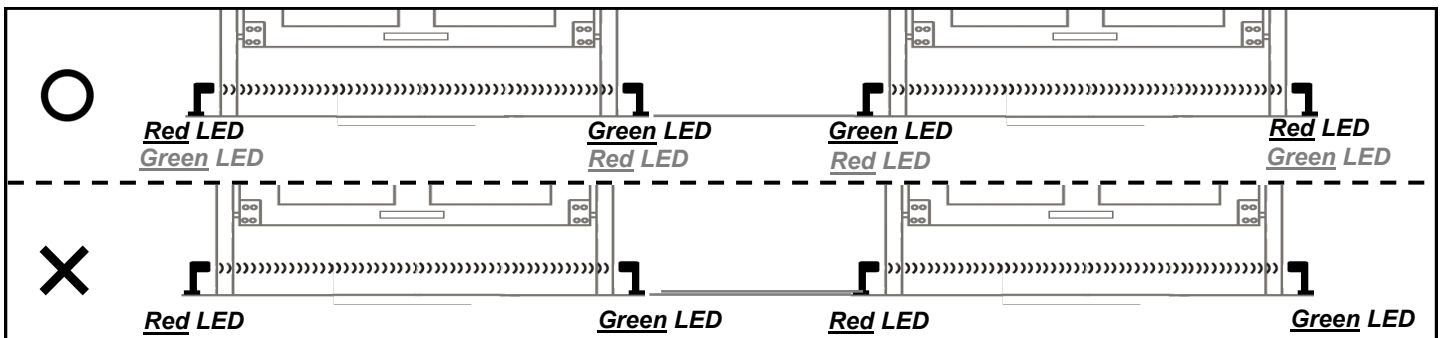
SYMPTOM: If courtesy lamp does not turn ON ,replace light bulb.

- Replace light bulb (A19 incandescent Max. 100W).
- If after light bulb is replaced, and courtesy lamp still does not turn ON, replace logic board.

SYMPTOM: Courtesy light does not turn OFF.

- If deluxe door control console installed, press courtesy light on/off switch. If after pressing light on/off of deluxe door control dose not work, then replace logic board.

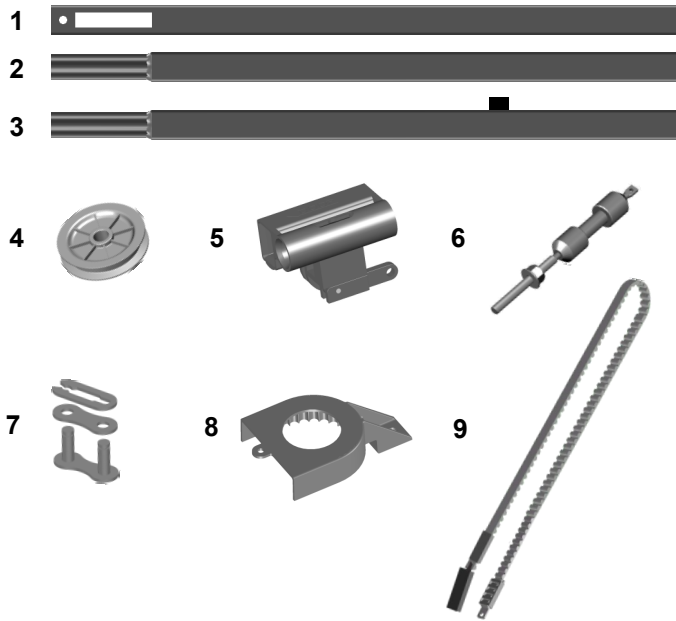
Note: If installing operators on two doors in the same garage, Photo Eyes should be aligned as below:



Repair Parts

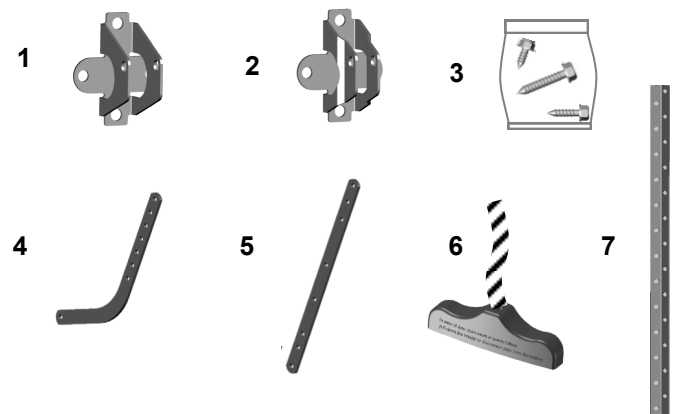
To purchase repair parts, call 1-888-331-4569.

Rail Assembly Parts



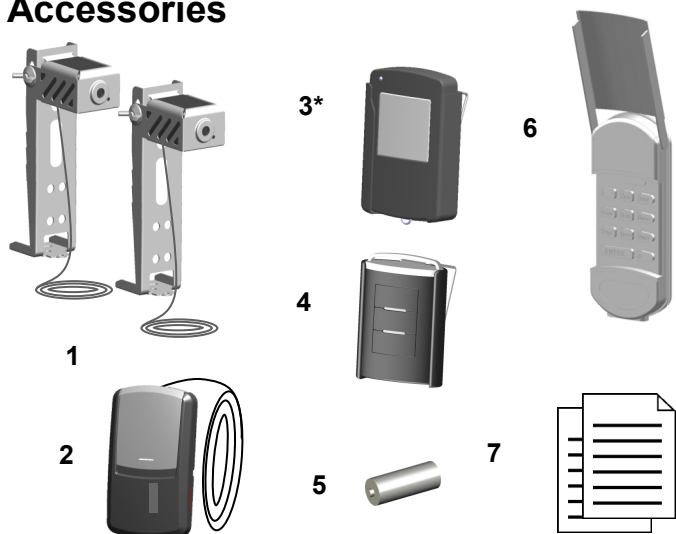
Item	Part No.	Name / Description
1	RP-001	Rail—Header Segment
2	RP-002	Rail—Middle Segments
3	RP-003	Rail—End Segment with Stop Bolt
4	GUT-840	Pulley
5	RP-004	Trolley
6	RP-021	Trolley Shaft
7	GUT-410	Master Link Set
8	RP-022	Pulley Cover-16T
9	RP-014	Belt

Installation Parts



Item	Part No.	Name / Description
1	RP-007	Header Bracket
2	GUAT-022	Door Bracket
3	RP-008	Hardware Bag with Emergency Release Handle & Rope (Installation hardware shown on P.3)
4	GUAT-024	Curved Door Arm
5	GUAT-025	Straight Door Arm
6	GUAT-026	Emergency Release Handle + Rope
7	RP-009	Hanging Bracket

Accessories

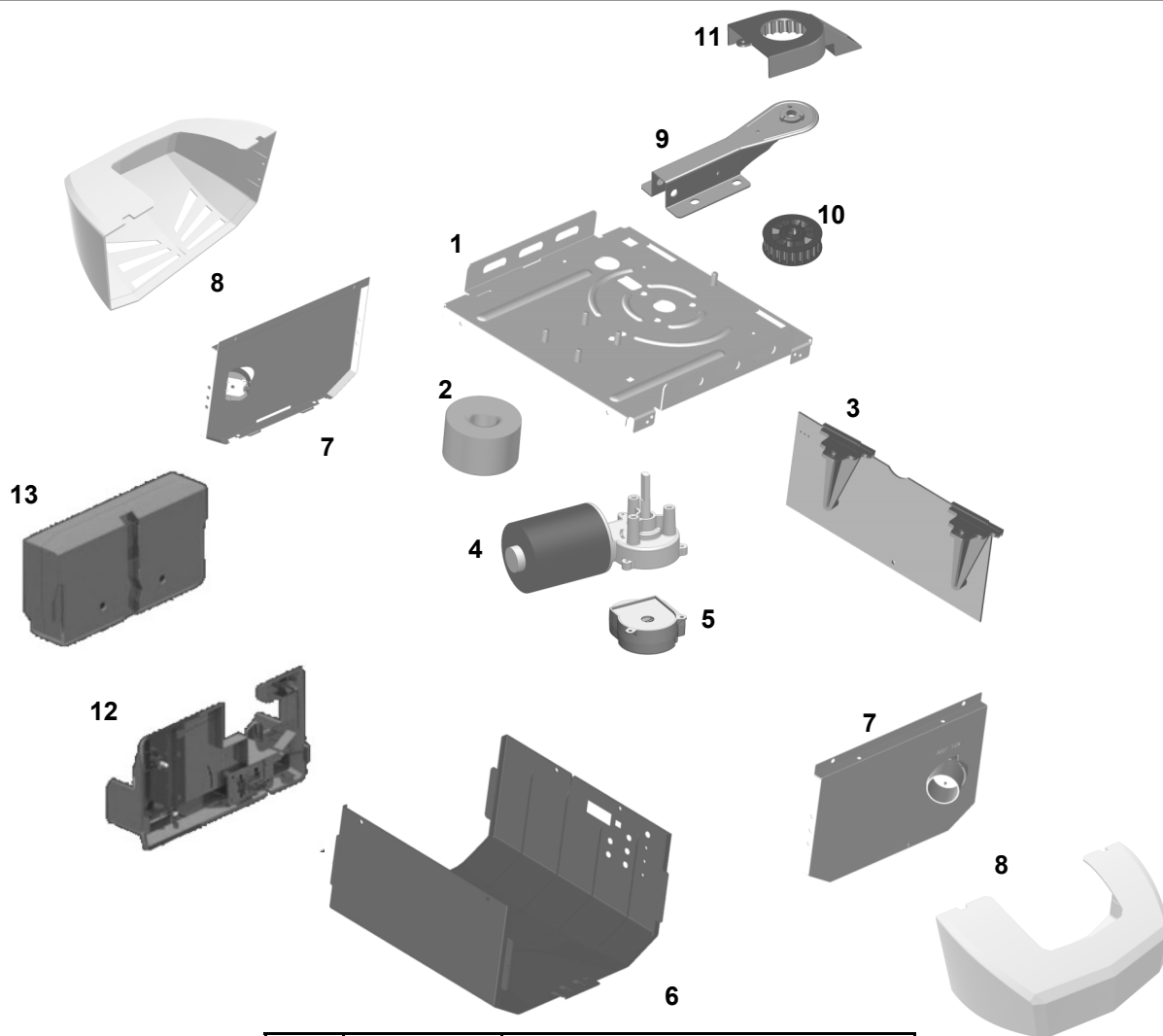


Item	Part No.	Name / Description
1	GUAT-201	Photo Eye Safety System (Emitter + Sensor with Brackets)
2	CR-007	Door Control Console
3	58502	1-Button Remote
4	57938	3-Button Mini Remote
5	GUAT-210	27AE 12 Volt Alkaline Battery
6	57939	Keyless Entry Pad
7	CR-017	Owner's Manual

***Optional**

To purchase optional accessories, visit a Craftsman outlet, call 1-888-331-4569, or go online to www.sears.com

Opener Assembly Parts



Item	Part No.	Name / Description
1	N/A	Chassis
2	GUDT-321	Transformer
3	RP-322	Receiver/Logic Board-BBU
4	GUDT-323	DC Motor
5	GUDT-314	Encoder Module
6	CR-018	Opener Cover
7	GUAT-303	Lamp Plate
8	CR-003	Lamp Lens
9	RP-018	Rail Bracket
10	RP-023	Belt Pulley-16T
11	RP-022	Pulley Cover-16T
12	GUDT-319	Battery Holster
13	CR-012	Battery

* Should be replaced only by a qualified technician.

CRAFTSMAN WARRANTY

90-DAY IN-HOME LIMITED WARRANTY

FOR 90 DAYS from the date of sale this product is warranted against defects in material or workmanship. With proof of purchase a defective product will be repaired free of charge.

LIMITED WARRANTY ON PARTS

FROM THE 91st DAY THROUGH 3 YEARS from the date of sale this product is warranted against defective parts. With proof of purchase a new part will be furnished to replace a defective one free of charge. Any costs for professional installation are not included.

LIMITED WARRANTY ON MOTOR

FROM THE 91st DAY THROUGH 10 YEARS from the date of sale the motor on this product is warranted against defects in material or workmanship. With proof of purchase a new motor will be furnished to replace a defective one free of charge. Any costs for professional installation are not included.

WARRANTY SERVICE

For warranty coverage details to obtain product repair or replacement parts, call this number:
1-888-331-4569

WARRANTY RESTRICTION

This warranty does not cover light bulbs, which are expendable parts, or repair parts necessary because of operator abuse or negligence, including the failure to install, adjust and operate this garage door opener according to instructions contained in the owner's manual. This warranty also does not cover any problems caused by interference.

LIMITATION ON LIABILITY

Seller will not be liable for loss or damage to property or any incidental or consequential loss or expense from property damage due directly or indirectly to the use of this product. Some states do not allow the exclusion or limitation of incidental or consequential damages, so the above limitation or exclusion may not apply to you.

DISCLAIMER OF IMPLIED WARRANTIES

Except for the motor, all implied warranties for this product, including but not limited to any implied warranties of merchantability and fitness for a particular purpose, are limited in duration to the 90 day and 91st day through 1-year limited warranty period set forth above. All implied warranties with respect to the motor are limited in duration to the 91st day through 10-year limited warranty period set forth above. No implied warranties will exist or apply after such periods. Some states do not allow limitations on how long an implied warranty lasts, so the above limitations may not apply to you.

This warranty applies only while this product is in use in the United States.

This warranty gives you specific legal rights, and you may also have other rights which vary from state to state.

Transform SR Brands Management LLC, Hoffman Estates, IL 60179

CRAFTSMAN®

**To order replacement parts
or schedule repair service**

**Para ordenar piezas
o pedir servicio de reparación**

1-888-331-4569