

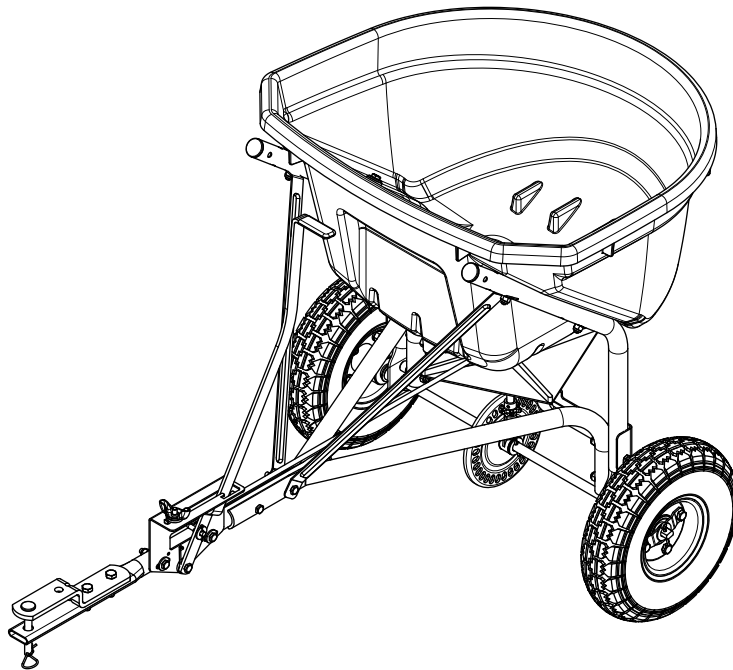
Operator's Manual



BROADCAST SPREADER

Model No. 486.24571

DO NOT RETURN TO STORE
For Missing Parts or Assembly
Questions Call 1-866-576-8388



CAUTION:

Before using this product, read this manual and follow all Safety Rules and Operating Instructions.

- Safety
- Assembly
- Operation
- Maintenance
- Parts

Sears Brands Management Corporation, Hoffman Estates, IL 60179 U.S.A.
www.craftsman.com
Used under license

TABLE OF CONTENTS

SAFETY RULES.....	2	OPERATION.....	8
WARRANTY	2	MAINTENANCE	9
FULL SIZE HARDWARE CHART	3	REPAIR PARTS ILLUSTRATION.....	10
CARTON CONTENTS.....	3	REPAIR PARTS LIST.....	11
ASSEMBLY.....	4	PARTS ORDERING/SERVICE	BACK PAGE

SAFETY RULES

Any power equipment can cause injury if operated improperly or if the user does not understand how to operate the equipment. Exercise caution at all times when using power equipment

- Read the towing vehicle owners manual and towing vehicle safety rules. Know how to operate your tractor before using the broadcast spreader attachment.
 - Read the chemical label instructions and cautions for handling and applying the chemicals purchased for spreading.
 - Wear eye and hand protection when handling and when applying lawn or garden chemicals.
 - Never operate tractor and spreader attachment without wearing substantial footwear, and do not allow anyone to ride or sit on spreader attachment frame.
 - Never allow children to operate the tractor or spreader attachment, and do not allow adults to operate without proper instructions.
- Always begin with the transmission in first (low) gear and with the engine at low speed, and gradually increase speed as conditions permit. Maximum towing speed - 6 M.P.H.
 - When towing broadcast spreader do not drive too close to a creek or ditch and be alert for holes and other hazards which could cause you to lose control of the broadcast spreader and tractor.
 - Before operating vehicle on any grade (hill) refer to the safety rules in the vehicle owner's manual concerning safe operation on slopes. Stay off steep slopes!
 - Follow maintenance and lubrication instructions as outlined in this manual.

WARRANTY

CRAFTSMAN LIMITED WARRANTY

FOR ONE YEAR from the date of sale this product is warranted against defects in material or workmanship. WITH PROOF OF SALE a defective part will be replaced free of charge. If a replacement part is unavailable, the product will be replaced with one of equal value.

For warranty coverage details to obtain free replacement, visit the web page: www.craftsman.com/warranty

This warranty does not cover expendable items that can wear out from normal use or deterioration within the warranty period, including but not limited to tires, belts, exterior finishes or product labels.

This warranty does not apply to a product that is damaged or altered through transportation, misuse, abuse, corrosion, accident, neglect, modification or mishandling.

This warranty is void if this product is ever used while providing commercial services or if rented to another person.

This warranty gives you specific legal rights, and you may also have other rights which vary from state to state.

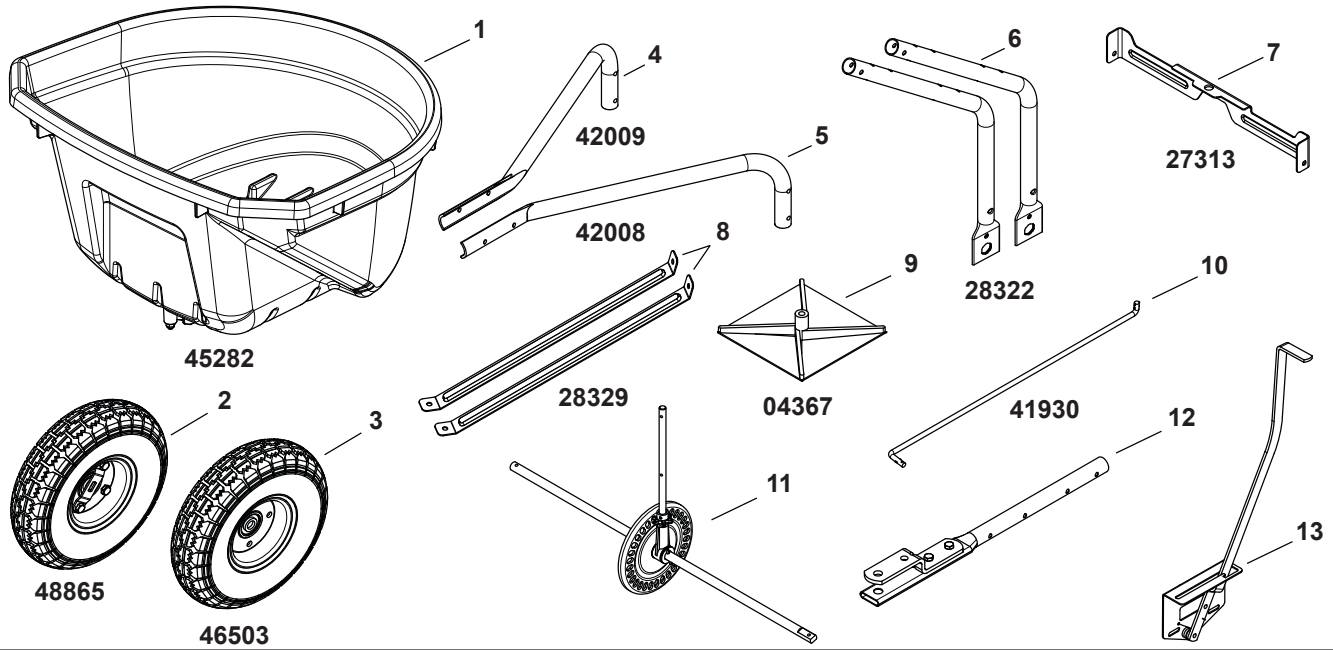
Sears Brands Management Corporation, Hoffman Estates, IL 60179

DO NOT RETURN TO STORE for Missing Parts or Assembly Questions

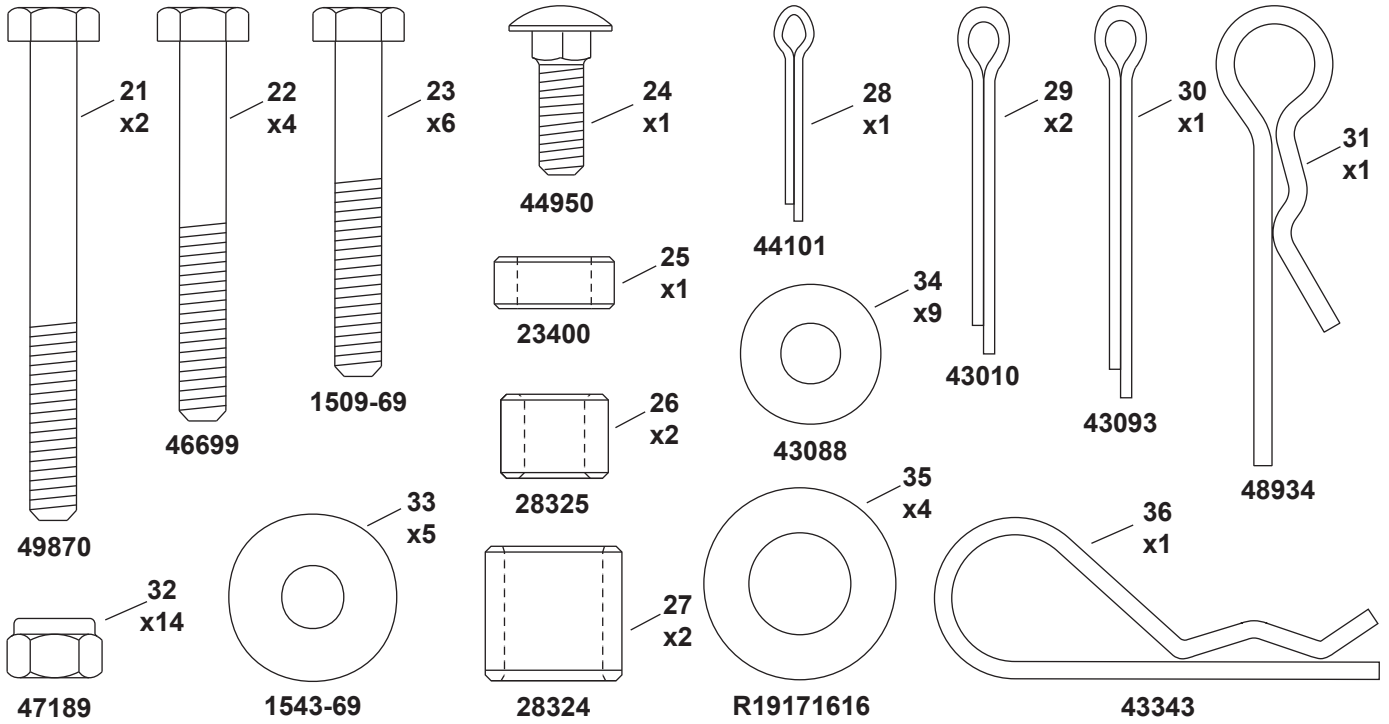
Call 1-866-576-8388 Attachment Hotline

<p>The model number and serial numbers will be found on a decal attached to the Broadcast Spreader.</p> <p>You should record both the serial number and the date of purchase and keep in a safe place for future reference.</p>	<table style="width: 100%; border-collapse: collapse;"> <tr> <td style="width: 60%;">MODEL NUMBER:</td> <td style="width: 40%;">486.24571</td> </tr> <tr> <td>SERIAL NUMBER:</td> <td>_____</td> </tr> <tr> <td>DATE OF PURCHASE:</td> <td>_____</td> </tr> </table>	MODEL NUMBER:	486.24571	SERIAL NUMBER:	_____	DATE OF PURCHASE:	_____
MODEL NUMBER:	486.24571						
SERIAL NUMBER:	_____						
DATE OF PURCHASE:	_____						

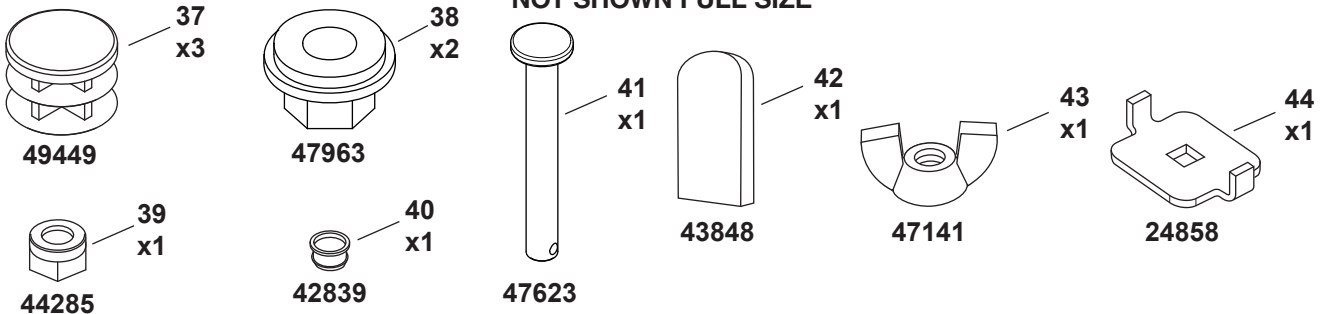
CARTON CONTENTS



FULL SIZE HARDWARE CHART



NOT SHOWN FULL SIZE



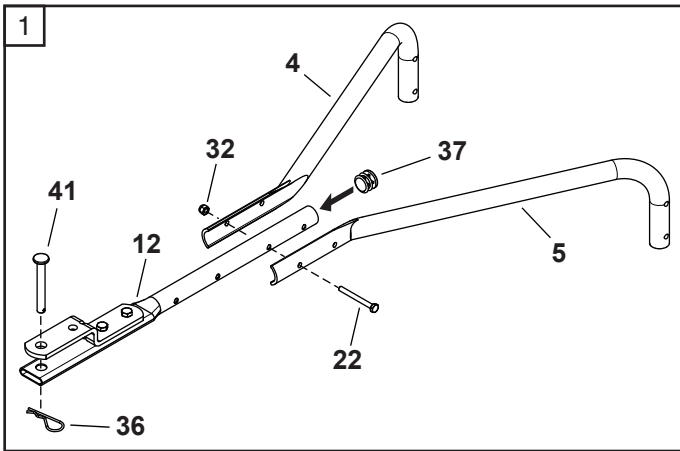
ASSEMBLY

TOOLS REQUIRED FOR ASSEMBLY

- (1) Pliers
- (2) 7/16" Open or Box End Wrenches

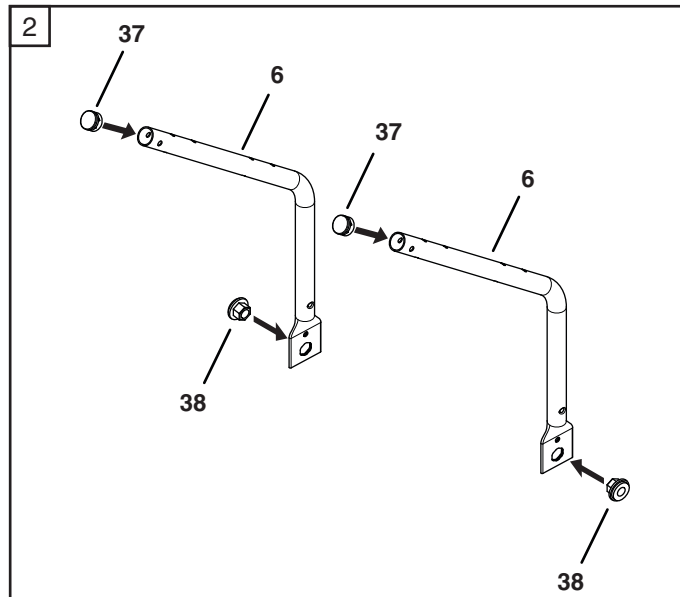
STEP 1: (SEE FIGURE 1)

- Insert a plug (37) in to the end of the hitch tube (12).
- Install the hitch pin (41) in the hitch bracket and hitch tube and secure it with the hairpin cotter (36).
- Attach the hitch support tubes (4) and (5) to the hitch tube using one 1/4" x 2" hex bolt (22) and 1/4" nylock nut (32). **Do not tighten completely.**



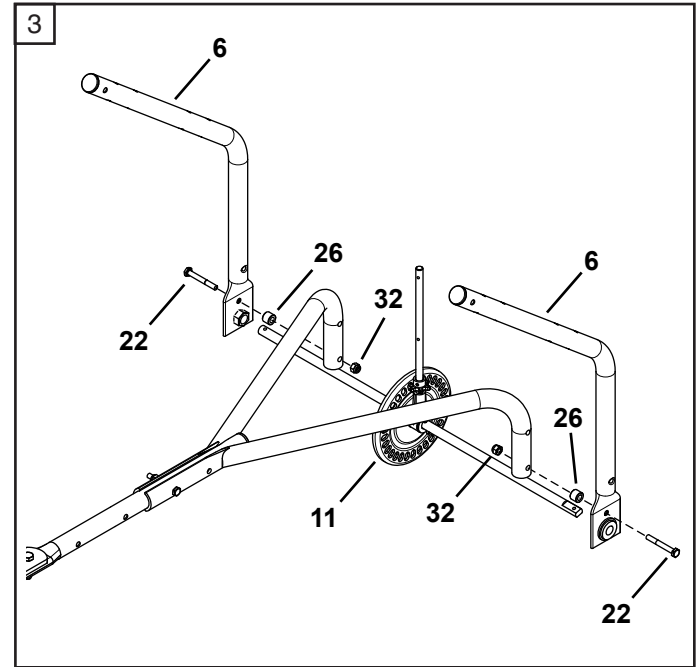
STEP 2: (SEE FIGURE 2)

- Insert plugs (37) into the ends of the hopper support tubes (6).
- Insert hex flange bearings (38) into the holes in the hopper support tubes (6) as shown below.



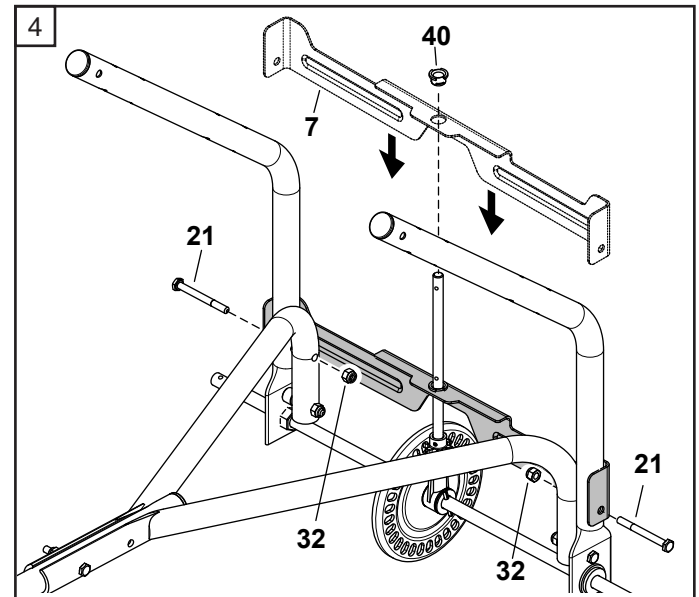
STEP 3: (SEE FIGURE 3)

- Assemble the axle/gear assembly (11) and hopper support tubes (6) to the hitch support tubes as shown using two 1/4" x 2" hex bolts (22), spacers (26), and 1/4" nylock nuts (32). **Do not tighten completely.**



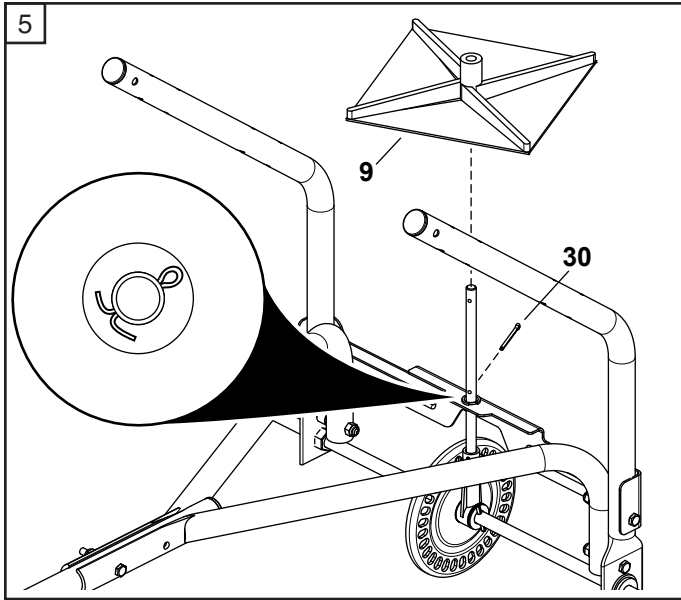
STEP 4: (SEE FIGURE 4)

- Slide the cross brace (7) onto the spreader shaft.
- Insert the bushing (40) into the cross brace (7).
- Attach the cross brace to the hopper support tubes using two 1/4" x 2-1/2" hex bolts (21) and 1/4" nylock nuts (32). **Do not tighten completely.**



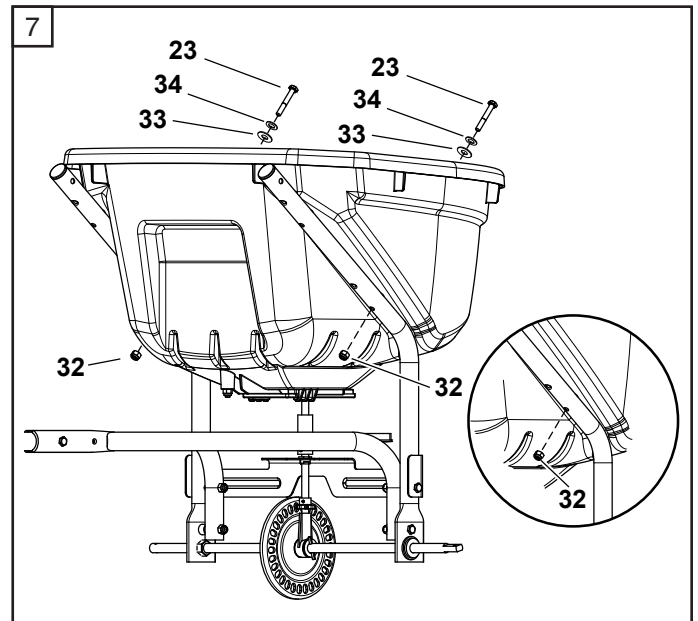
STEP 5: (SEE FIGURE 5)

- Slide the spreader impeller (9) onto the spreader shaft and secure it with a 1/8" x 1-1/2" cotter pin (30).



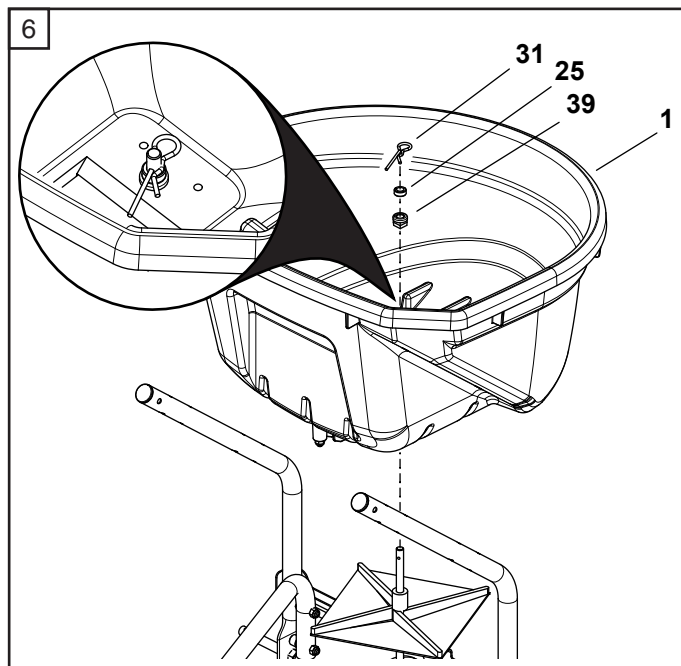
STEP 7: (SEE FIGURE 7)

- Attach the hopper to the lower set of holes in the hopper support tubes using four 1/4" x 1-3/4" hex bolts (23), 1/4" washers (34), nylon washers (33) and 1/4" nylock nuts (32). **Tighten.**



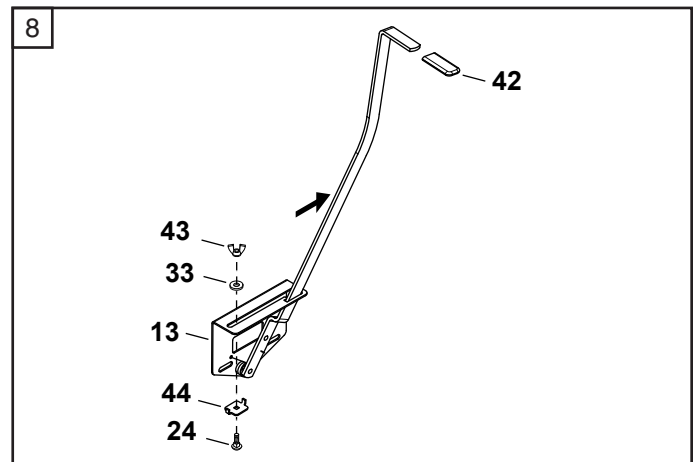
STEP 6: (SEE FIGURE 6)

- Place the hopper on the hopper support tubes, inserting the spreader shaft through the square hole in the bottom of the hopper.
- Slide the hopper bushing (39) onto the spreader shaft and insert it into the bottom of the hopper.
- Slide the spacer (25) onto the spreader shaft.
- Install the agitator hairpin (31) in the spreader shaft.



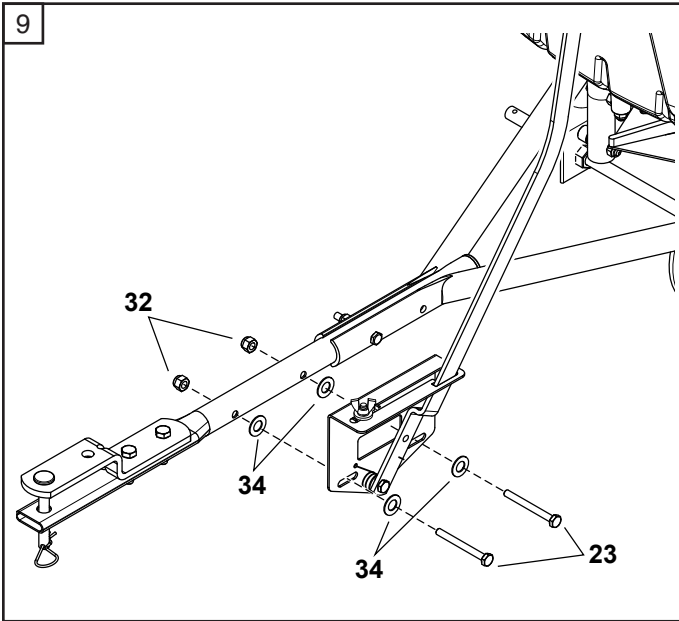
STEP 8: (SEE FIGURE 8)

- Install the grip (42) onto the flow control arm.
- Assemble the adjustable stop (44) to the flow control bracket using the 1/4" x 3/4" carriage bolt (24), nylon washer (33) and wing nut (43). **Tighten.**



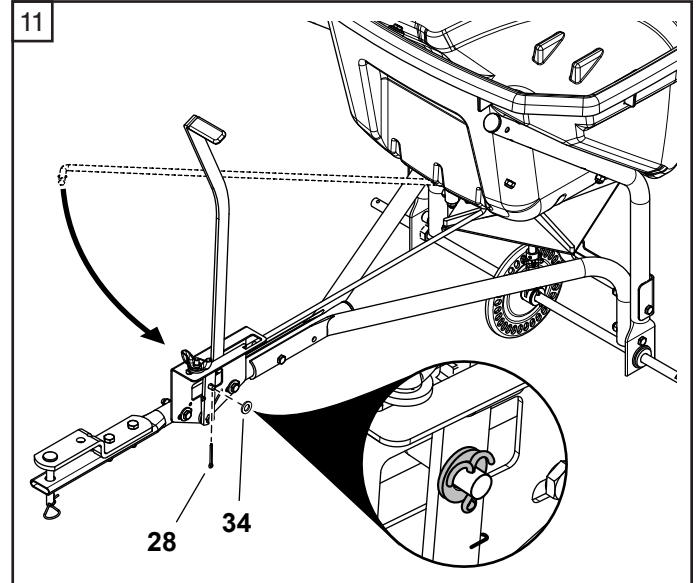
STEP 9: (SEE FIGURE 9)

- Attach the flow control bracket to the hitch tube using two 1/4" x 1-3/4" hex bolts (23), four 1/4" washers (34) and two 1/4" nylock nuts (32). **Do not tighten completely.**



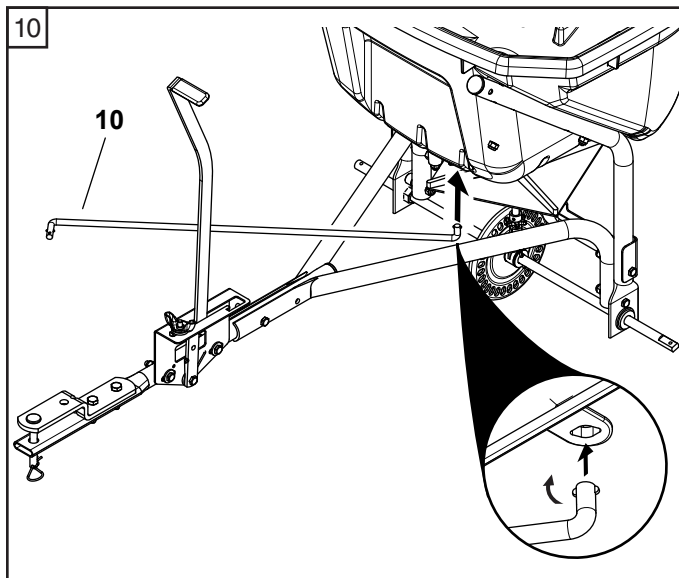
STEP 11: (SEE FIGURE 11)

- Swing the flow control rod around and insert the end of the rod into the flow control arm. Secure it with a 1/4" washer (34) and a 3/32" x 3/4" cotter pin (28).



STEP 10: (SEE FIGURE 10)

- Install the end of the flow control rod (10) with no hole into the elongated hole in the flow plate on the bottom of the hopper. Lock the rod in the flow plate by rotating the rod.



STEP 12: (SEE FIGURE 12)

- Fasten the hopper braces (8) to the hopper support tubes using two 1/4" x 1-3/4" hex bolts (23), 1/4" washers (34), nylon washers (33) and 1/4" nylock nuts (32). **Do not tighten completely.**
- Fasten the loose ends of the hopper braces to the hitch tube using a 1/4" x 2" hex bolt (22) and a 1/4" nylock nut (32). **Do not tighten completely.**

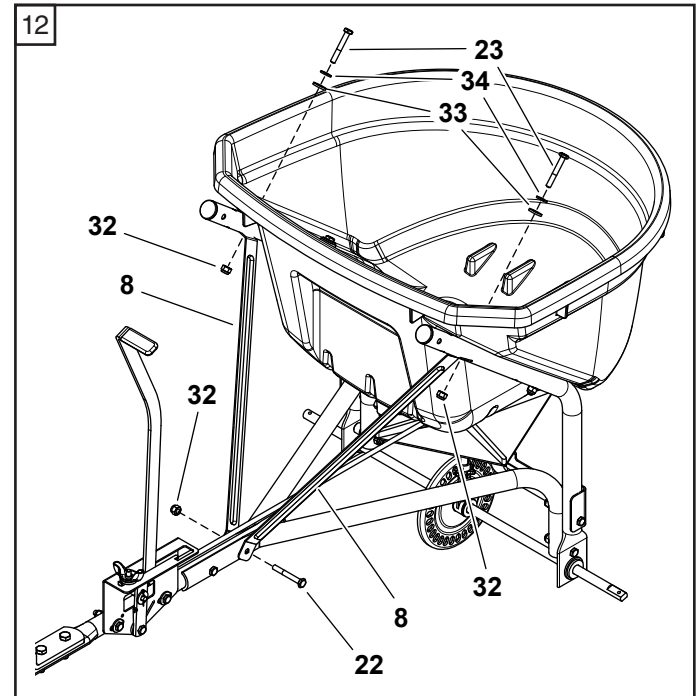
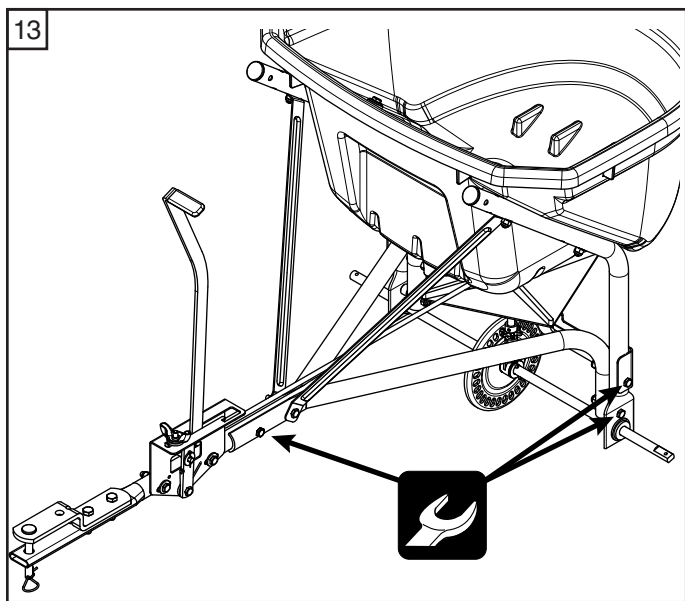


FIGURE 8

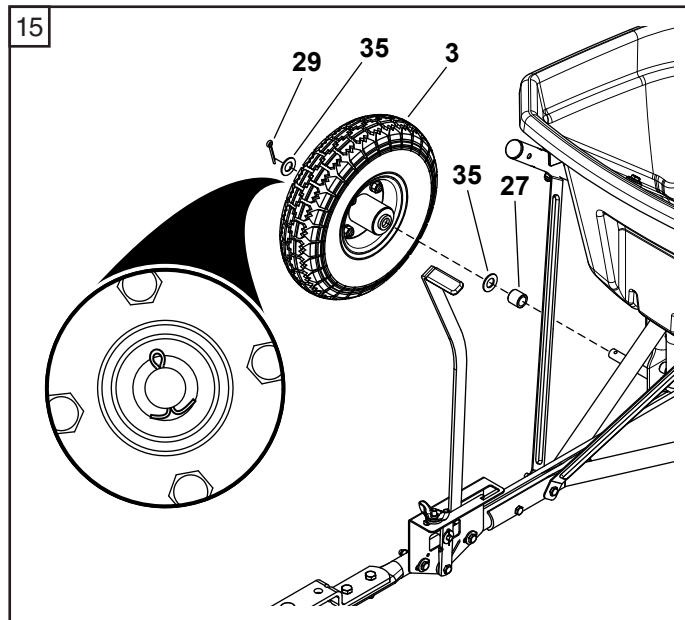
STEP 13: (SEE FIGURE 11)

- **Tighten** all bolts and nuts **except** for those shown in step 9 that fasten the control bracket to the hitch tube.



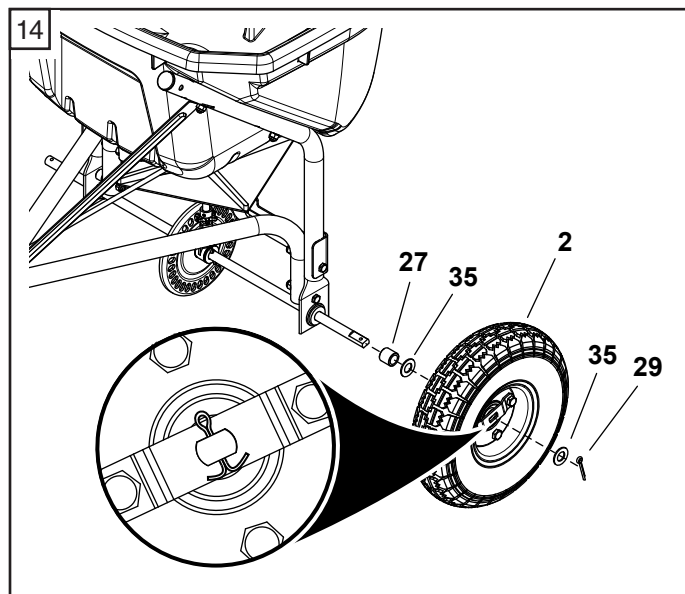
STEP 15: (SEE FIGURE 14)

- Slide a spacer (27), a 1/2" washer (35), and a wheel (2) onto the round end of the axle.
- Slide a 1/2" washer (35) over the axle and secure the wheel with a 1/8 x 1-1/4" cotter pin (29), spreading the ends.



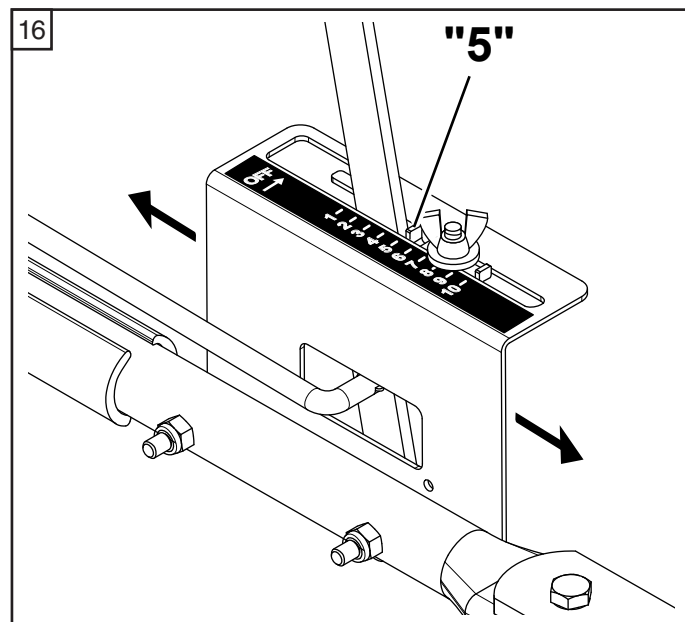
STEP 14: (SEE FIGURE 14)

- Slide a spacer (27), a 1/2" washer (35), and the drive wheel (2) onto the square end of the axle.
- Slide a 1/2" washer (35) over the axle and secure the wheel with a 1/8 x 1-1/4" cotter pin (29), spreading the ends.



STEP 16: (SEE FIGURE 15)

- Set the adjustable stop at "5" and move the control handle back against it.
- Slide the control bracket along the hitch tube until the flow plate in the bottom of the hopper is open half way.
- **Tighten** the bolts and nuts fastening the control bracket. **Do not deform** the control bracket.
- Make sure the flow plate will open and close all the way. Readjust if necessary.



OPERATION

USING YOUR SPREADER

We do not recommend the use of any powdered lawn chemicals due to difficulty in obtaining a satisfactory or consistent broadcast pattern.

- Determine approximate square footage of area to be covered and estimate amount of material required.
- Before filling the hopper make sure the flow control arm is in the off position and the closure plate is shut.
- Break up any lumpy fertilizer as you fill the hopper.
- Set the adjustable stop with the flow control arm still in the off position. Refer to the application chart on this page and to the instructions on the fertilizer bag to select the proper flow rate setting.
- The application chart is calculated for light to heavy application at a walking speed of 3 mph, or 100 ft. in 23 seconds. A variation in speed will require an adjustment of the flow rate to maintain the same coverage.
- Always start the spreader in motion before opening the closure plate.
- Always shut the closure plate before turning or stopping the spreader.
- If fertilizer is accidentally deposited too heavily in a small area, soak the area thoroughly with a garden hose or sprinkler to prevent burning of the lawn.
- To insure uniform coverage, make each pass so that the broadcast pattern slightly overlaps the pattern from the previous pass as shown in figure 17. The approximate broadcast widths for different materials are shown in the application chart on this page.
- When broadcasting weed control fertilizers, make sure the broadcast pattern does not hit evergreen trees, flowers or shrubs.
- Heavy moisture conditions may require a cover over the hopper to keep contents dry. The vinyl hopper cover acts as a wind and moisture shield, but should not be used as a rain cover.

APPLICATION DIAGRAM

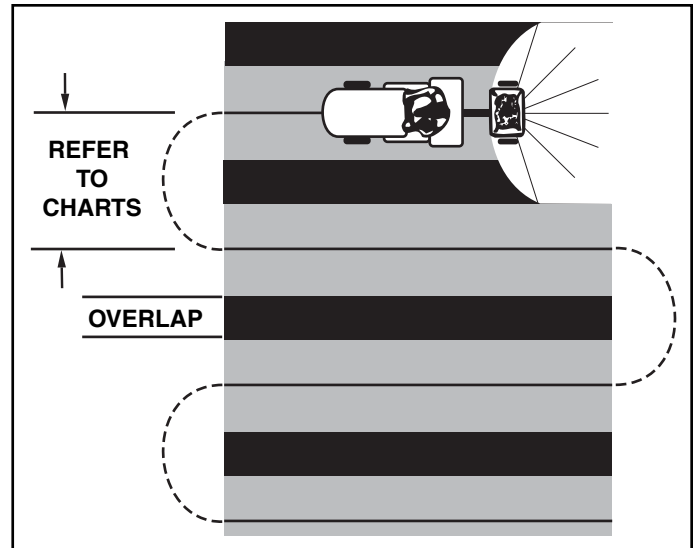


FIGURE 17

IMPORTANT: Application rates shown in the chart are affected by humidity and by the moisture content of the material (granular and pellet). Some minor setting adjustments may be necessary to compensate for this condition.

APPLICATION CHART		
TYPE MATERIAL	FLOW SETTING	SPREAD WIDTH
FERTILIZER		
Powder	3 - 5	3' - 4'
Granular	3 - 5	8' - 10'
Pelleted	3 - 5	10' - 12'
Organic	6 - 8	6' - 8'
GRASS SEED		
Fine	3 - 4	6' - 7'
Coarse	4 - 5	8' - 9'
ICE MELTER	6 - 8	10' - 12'

OPERATING SPEED - 3 MPH. (100 ft. in 23 seconds)

MAINTENANCE

CHECK FOR LOOSE FASTENERS

- Before each use make a thorough visual check of the spreader for any bolts and nuts which may have loosened. Retighten any loose bolts and nuts.

CHECK FOR WORN OF DAMAGED PARTS

- Check for worn or damaged parts before each use. Repair or replace parts if necessary.

CHECK TIRE INFLATION

- Check if tires are adequately inflated before each use. Do not inflate tires beyond maximum recommended pressure.



WARNING: Over-inflated tires can explode, causing serious injury. To avoid injury, NEVER inflate tires beyond the maximum pressure printed on the sidewall of the tire. ALWAYS use a hand pump to safely inflate tires.

LUBRICATE

- Lightly apply automotive grease as needed to the sprocket and gear.
- Oil nylon bushings on vertical sprocket shaft and on axle at least once a year, or more often as needed.
- Oil right hand (idler) wheel bearing at least once a year or more often as needed.

STORING

- Empty the spreader after each use, storing left over material in its original bag.
- Rinse the inside of the hopper and the exterior of the spreader and dry off before storing.
- Store in a clean, dry area.

SERVICE

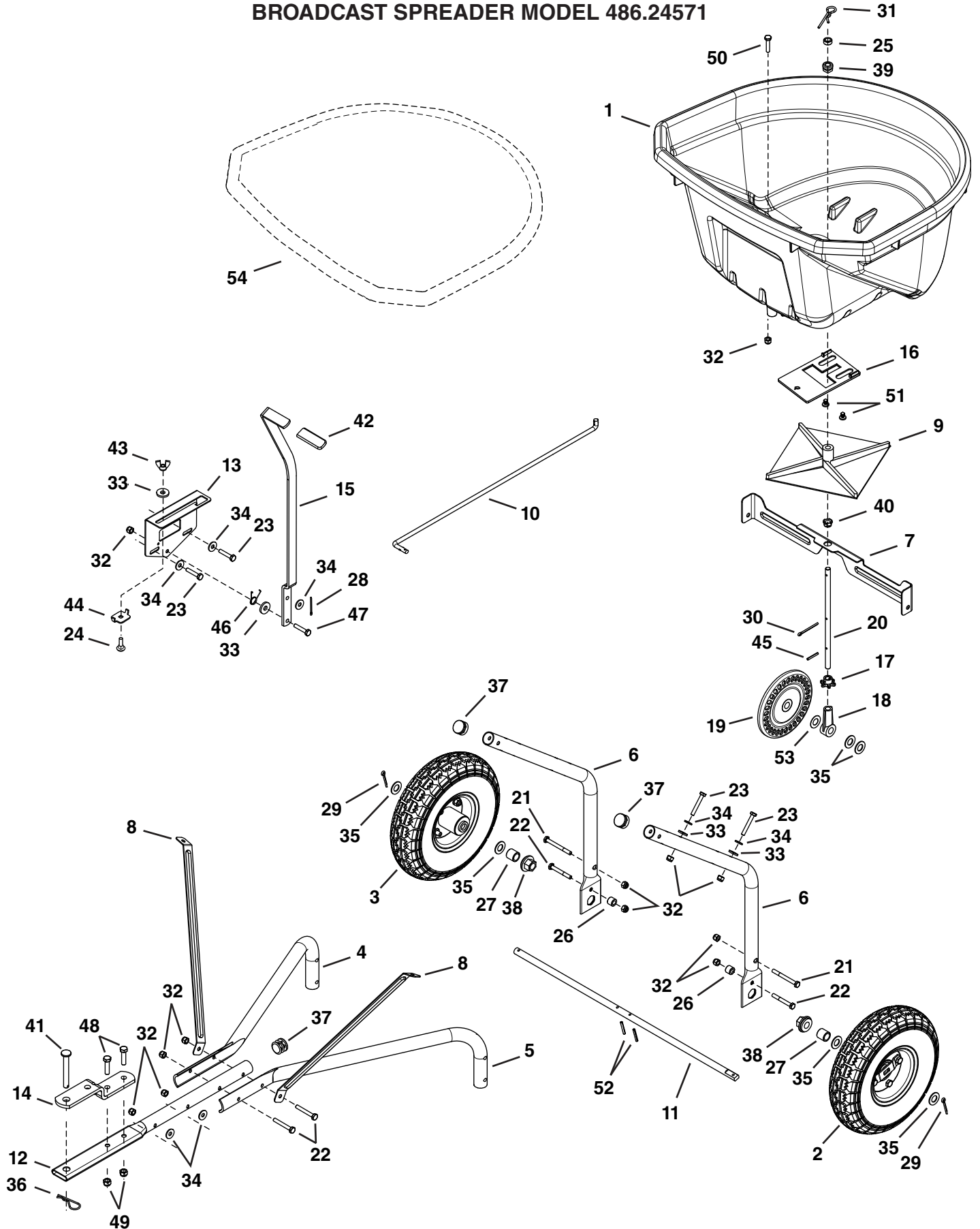
- If you replace the gears, be sure to reassemble the axle, gears and washers in their original positions. Add grease to the gears.

CLEANING

- Rinse inside of hopper and exterior of spreader and dry off before storing.

REPAIR PARTS ILLUSTRATION

BROADCAST SPREADER MODEL 486.24571



REPAIR PARTS LIST

BROADCAST SPREADER MODEL 486.24571

REF	QTY	PART NO	DESCRIPTION	REF	QTY	PART NO	DESCRIPTION
1	1	45282	Hopper	29	2	43010	Pin, Cotter 1/8 X 1-1/4
2	1	48865	Wheel, Drive	30	1	43093	Pin, Cotter 1/8 x 1-1/2
3	1	46503	Wheel	31	1	48934	Hairpin, Agitator
4	1	42009	Tube, Hitch Support	32	14	47189	Nut, Hex 1/4-20 Nylock
5	1	42008	Tube, Hitch Support	33	6	1543-69	Washer, Nylon .3281 x .75
6	2	28322	Tube, Hopper Support	34	9	43088	Washer, 1/4 Std .312 x .734
7	1	27313	Cross Brace	35	6	R19171616	Washer, .531 x 1 x .059
8	2	28329	Brace, Hopper	36	1	43343	Hairpin Cotter
9	1	04367	Spreader Impeller	37	3	49449	Plug, 1" Tube
10	1	41930	Rod, Flow Control	38	2	47963	Bearing, Hex Flange
11	1	28332	Axle	39	1	44285	Bushing, Hopper Bottom Black
12	1	41937	Tube, Hitch	40	1	42839	Bushing, 3/8" Plastic
13	1	27322	Bracket, Flow Control Mount	41	1	47623	Pin, Hitch 3/8" x 3" Flat Hd
14	1	23687	Bracket, Hitch	42	1	43848	Grip
15	1	27314	Arm, Flow Control	43	1	47141	Nut, Wing 1/4-20
16	1	45344	Plate, Flow	44	1	24858	Stop, Adjustable
17	1	44468	Sprocket	45	1	43850	Pin, Spring 1/8 x 5/8
18	1	44672	Bushing, Axle Shaft	46	1	42347	Spring, Torsion
19	1	62798	Slotted Gear	47	1	43661	Bolt, Hex 1/4-20 x 1
20	1	28323	Shaft, Spreader	48	2	43840	Bolt, Hex 5/16-18 x 1-1/4
21	2	49870	Bolt, Hex 1/4-20 x 2-1/2	49	2	47810	Nut, Hex 5/16-18 Nylock
22	4	46699	Bolt, Hex 1/4-20 x 2	50	1	1509-90	Bolt, Hex 1/4-20 x 1-1/4
23	6	1509-69	Bolt, Hex 1/4-20 x 1-3/4	51	2	48402	Plug, 1/4"
24	1	44950	Bolt, Carriage 1/4-20 x 3/4	52	2	44665	Pin, Spring 5/32 x 1-1/4
25	1	23400	Spacer	53	1	44137	Washer, .518 x 1 x .02
26	2	28325	Spacer	54	(1)	41316	Hopper Cover (Optional)
27	2	28324	Spacer, .51 ID x .75 OD x .70		1	45547	Owner's Manual
28	1	44101	Pin, Cotter 3/32 x 3/4				

CRAFTSMAN®

Product questions or problems?

1-888-331-4569

Customer Care Hot Line

**Get answers to questions, troubleshoot problems,
order parts, or schedule repair service.**

Para respuestas a preguntas o problemas, y ordenar
piezas o pedir servicio para la reparación de su equipo.

To help us help you, register your product at www.craftsman.com/registration

Para poderte ayudar mejor, registra tu producto en www.craftsman.com/registration

Join the Craftsman Club today!



www.craftsman.com/signup

**Receive exclusive member benefits including special pricing and offers,
project sharing, expert advice, and SHOP YOUR WAY REWARDS!**

Como miembro exclusivo, recibe diversos beneficios como ofertas, precios especiales, proyectos nuevos, consejos de expertos y nuestro programa de puntos SHOP YOUR WAY REWARDS!