

# KitchenAid®

---

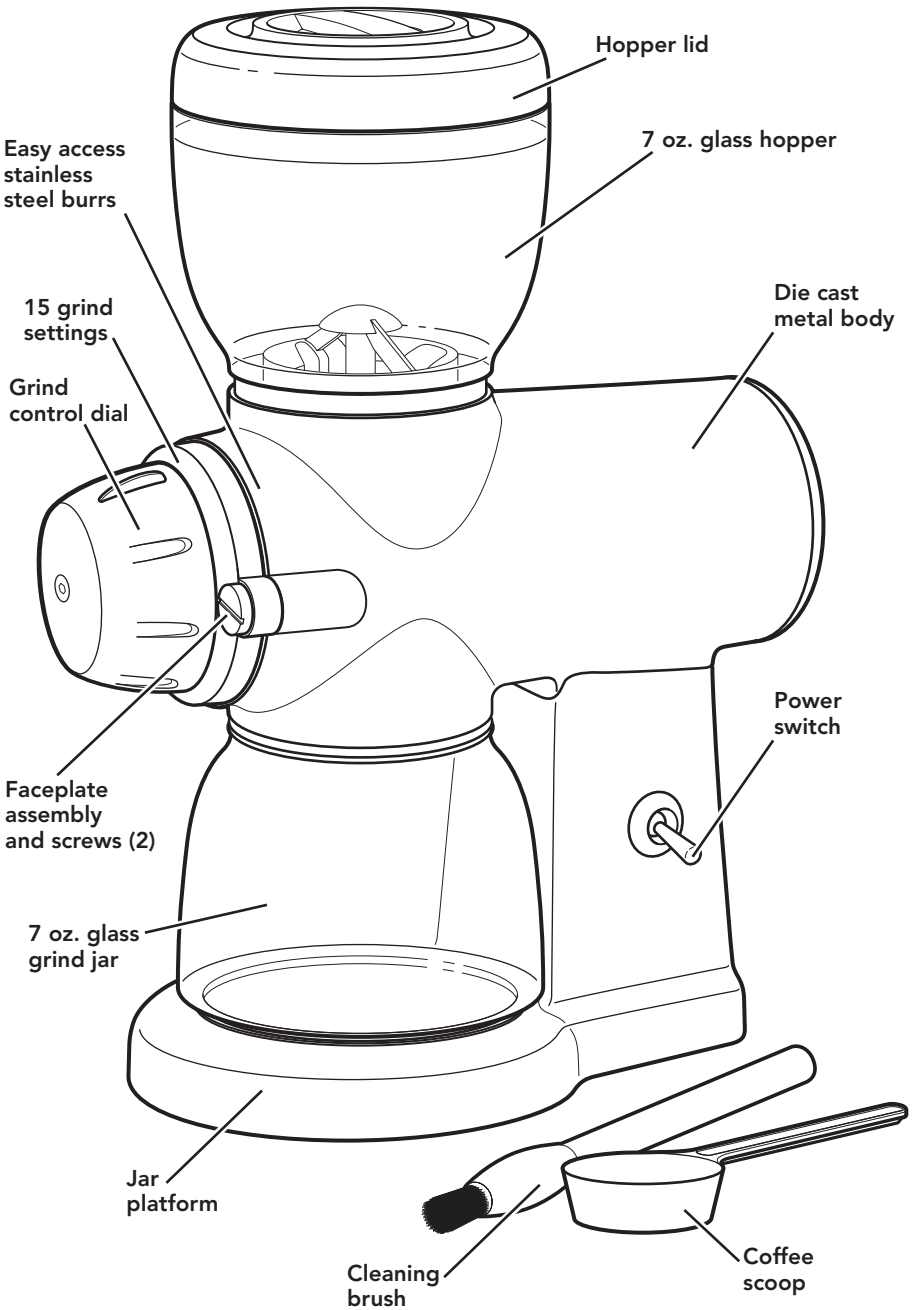
KCG0702



# PARTS AND FEATURES

## PARTS AND ACCESSORIES

---



# BURR GRINDER SAFETY

## Your safety and the safety of others are very important.

We have provided many important safety messages in this manual and on your appliance. Always read and obey all safety messages.



This is the safety alert symbol.

This symbol alerts you to potential hazards that can kill or hurt you and others.

All safety messages will follow the safety alert symbol and either the word “DANGER” or “WARNING.” These words mean:

 **DANGER**

**You can be killed or seriously injured if you don't immediately follow instructions.**

 **WARNING**

**You can be killed or seriously injured if you don't follow instructions.**

All safety messages will tell you what the potential hazard is, tell you how to reduce the chance of injury, and tell you what can happen if the instructions are not followed.

State of California Proposition 65 Warnings:

**WARNING:** This product contains one or more chemicals known to the State of California to cause cancer.

**WARNING:** This product contains one or more chemicals known to the State of California to cause birth defects or other reproductive harm.

## IMPORTANT SAFEGUARDS

When using electrical appliances, basic safety precautions should always be followed, including the following:

1. Read all instructions.
2. To protect against risk of electric shock, do not put the Burr Grinder in water or other liquid.
3. Close supervision is necessary when any appliance is used by or near children.
4. Unplug the Burr Grinder from the outlet when not in use, before putting on or taking off parts, and before cleaning.
5. Avoid contacting moving parts.
6. Do not operate any appliance with a damaged cord or plug, or after the appliance malfunctions or is dropped or damaged in any manner. Return the appliance to the nearest authorized service facility for examination, repair, or electrical or mechanical adjustment.
7. The use of attachments not recommended or sold by KitchenAid may cause fire, electric shock, or injury.

# BURR GRINDER SAFETY

8. Do not use outdoors.
9. Do not let cord hang over edge of table or counter, or touch hot surfaces.
10. Check the bean hopper for the presence of foreign objects before using.

## SAVE THESE INSTRUCTIONS

**This product is designed for household use only.**

### ELECTRICAL REQUIREMENTS

---

#### **⚠ WARNING**



#### **Electrical Shock Hazard**

**Plug into a grounded 3 prong outlet.**

**Do not remove ground prong.**

**Do not use an adapter.**

**Failure to follow these instructions can result in death, fire, or electrical shock.**

**Volts:** 120 V.A.C.

**Hertz:** 60 HZ

**NOTE:** This Burr Grinder has a 3 prong grounded plug. To reduce the risk of electrical shock, the plug will fit in an outlet only one way. If the plug does not fit in the outlet, contact a qualified electrician. Do not modify the plug in any way.

A short power-supply cord is provided to reduce the risk resulting from becoming entangled in or tripping over a longer cord. Extension cords are available and may be used if care is exercised in their use.

If a longer extension cord is used:

The marked electrical rating of the extension cord should be at least as great as the electrical rating of the appliance.

- The extension cord should be a grounding-type 3 wire cord.
- The cord should be arranged so it will not drape over the countertop or tabletop where it can be pulled on by children or tripped over.

# USING THE BURR GRINDER

## GRIND SETTING CHART

**NOTE:** The bean hopper holds a maximum of 7 oz (200 g) of beans.

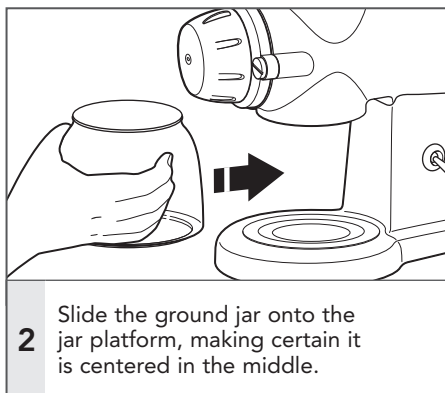
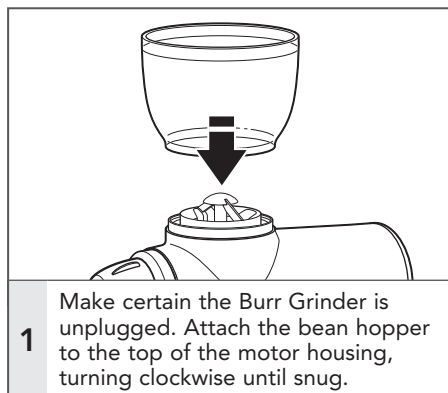
**HELPFUL TIP:** Because partially ground coffee beans may remain between the burrs after the Burr Grinder is turned off, it is recommended to select a finer grind setting while the Burr Grinder is running.

This Burr Grinder offers 15 different grind levels, available in half-step increments from 1 to 8. Select the grind by turning the grind control dial to the desired setting on the grind settings ring, as shown in this chart. With continued use, you will be able to refine the setting to match your own tastes.

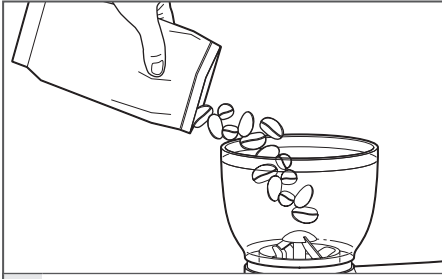
GRIND	COFFEE TYPE	SETTING
COARSE	FRENCH PRESS	1-3
MEDIUM-COARSE	SIPHON	3-5
MEDIUM	AUTOMATIC DRIP	5-6
MEDIUM-FINE	POUR OVER	6-7
FINE	ESPRESSO	8

## ASSEMBLING AND RUNNING THE BURR GRINDER

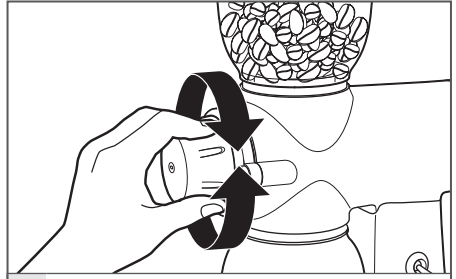
**NOTE:** Before using the Burr Grinder, wipe the motor housing and cord with a clean damp cloth. Wash the bean hopper, lid, and ground jar in hot soapy water, then rinse and dry; or, wash in the top rack of a dishwasher.



# USING THE BURR GRINDER



- 3** Fill the bean hopper, then attach the lid.



- 4** Select your desired grind setting, using the "Grind setting chart".

## ⚠ WARNING



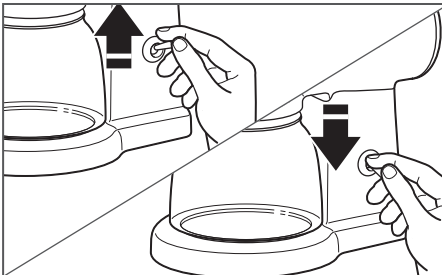
### Electrical Shock Hazard

Plug into a grounded 3 prong outlet.

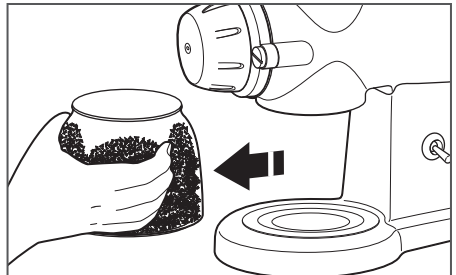
Do not remove ground prong.

Do not use an adapter.

Failure to follow these instructions can result in death, fire, or electrical shock.



- 5** Plug the Burr Grinder into a grounded 3 prong outlet. Flip the POWER switch up to turn on, and begin grinding your coffee. Flip the POWER switch down when you have ground the desired amount of coffee.

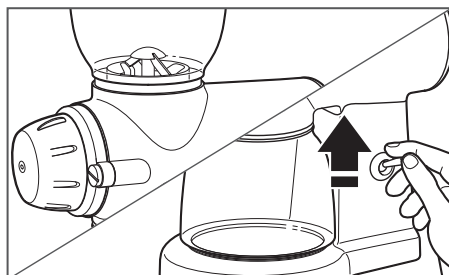


- 6** After grinding, remove the ground jar from the Burr Grinder, and scoop out the ground coffee.

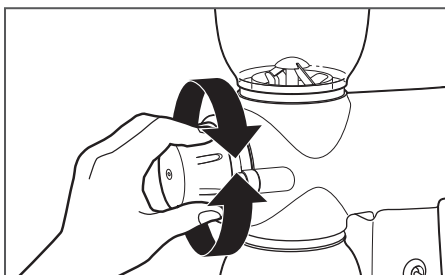
# USING THE BURR GRINDER

## ADJUSTING THE BURRS FOR A FINER OR COARSER GRIND

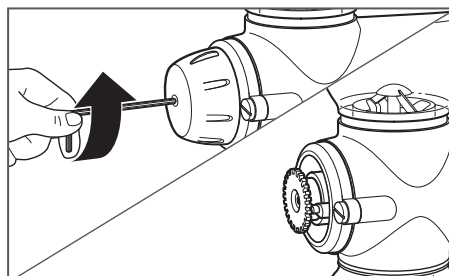
If you're an espresso or French Press aficionado, you may wish to adjust the factory setting of the cutting burrs to provide optimum performance for your style of brewing.



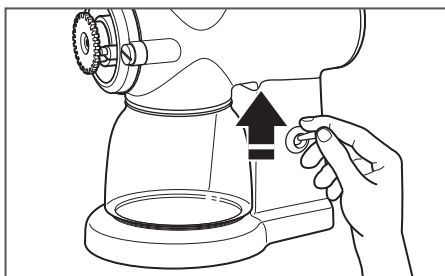
- 1** Make sure the bean hopper is empty; then, flip the POWER switch up to turn on and run for a few seconds to clear any debris.



- 2** **For maximum grind fineness:** Turn the grind control dial to level 8.  
**For maximum grind coarseness:** Turn the grind control dial to level 1.



- 3** Using a 5/32 in (4mm) allen wrench or a hex-head screwdriver, remove the screw from the front of the grind control dial by turning it counterclockwise. You will be able to see the grind control gear after the dial is removed.



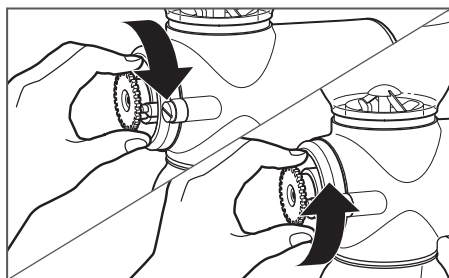
- 4** **For maximum grind fineness:** Flip the POWER switch up to turn on the Burr Grinder.  
**For maximum grind coarseness:** You do not need to turn the Burr Grinder on while adjusting the burrs.

**NOTE:** If you cannot get the exact maximum coarseness of grind you prefer by adjusting the Burr Grinder while it is off, try adjusting with the Burr Grinder turned on.

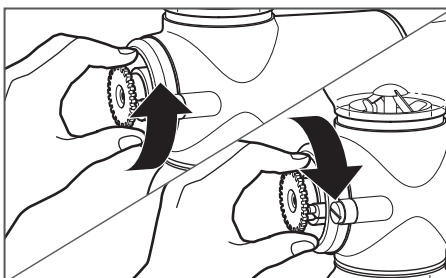
### FOR DETAILED INFORMATION ON USING THE BURR GRINDER:

Visit [kitchenaid.com/quickstart](http://kitchenaid.com/quickstart) for additional Instructions with videos, inspiring recipes, and tips on how to use your Burr Grinder.

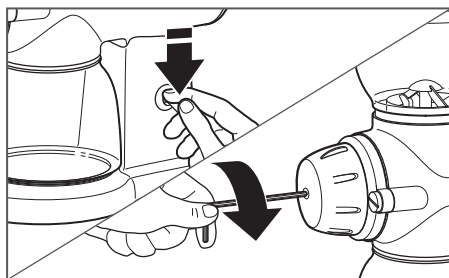
## USING THE BURR GRINDER



**5a** **For maximum grind fineness:** Turn the grind control gear clockwise, one “click” at a time, until you hear a distinct grating or rubbing sound that signifies the burrs are touching. Then, turn the grind control gear one “click” counterclockwise. The grating or rubbing sound will stop.



**5b** **For maximum grind coarseness:** Turn the grind control gear counterclockwise, one “click” at a time, until the clicking sound diminishes and the gear offers little resistance to being turned.



**6** **Flip the POWER switch off.**  
**If you adjusted for maximum grind fineness:** Reattach the grind control dial, making certain the dial indicator points to grind level 8.  
**If you adjusted for maximum grind coarseness:** Reattach the grind control dial, making certain the dial indicator points to grind level 1.

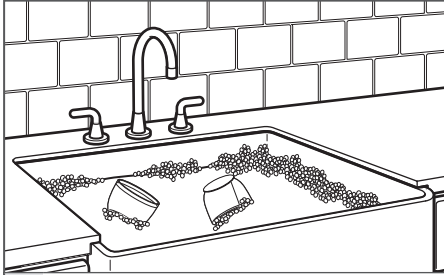
**IMPORTANT:** If the Burr Grinder produces a grating or “rubbing” sound during use, the burrs have been improperly adjusted. Damage to the burrs will result. Readjust the burrs immediately.



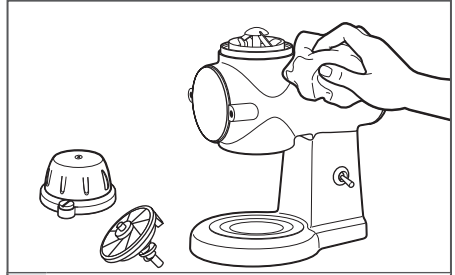
# CARE AND CLEANING

## CLEANING THE BURR GRINDER AND BURRS

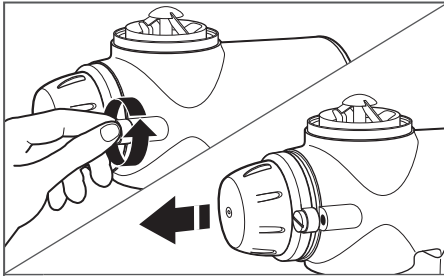
**IMPORTANT:** To avoid damage, never wash or immerse the Burr Grinder main body, cutting burrs, burr-shaft assembly, or faceplate in water, or place in the dishwasher. The bean hopper and lid, and grind jar are dishwasher safe, top rack only.



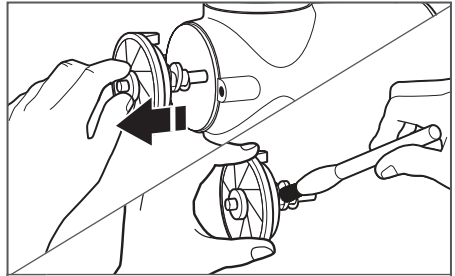
- 1** After using the Burr Grinder, remove the bean hopper, lid, and grind jar. Wash these pieces by hand with a soft cloth, in warm sudsy water; or, wash in the top rack of the dishwasher.



- 2** Clean the Burr Grinder main body and all its parts by hand only. Wash with a soft, damp cloth. Dry thoroughly with a soft dry cloth. Do not wash in the dishwasher. Do not immerse in water.



- 3** Remove the faceplate assembly by loosening the screws on either side. Screws can be loosened by hand.



- 4** Pull the burr-shaft assembly out to clean with the other parts. Using the burr-cleaning brush, clean the burr mounted on the burr-shaft assembly and the burr mounted in the motor housing.

**IMPORTANT:** If the Burr Grinder is used frequently, the burrs should be cleaned regularly for best performance. Cleaning enables the burrs to achieve the finest, most consistent grinds possible.


### FOR DETAILED INFORMATION ON CLEANING THE BURR GRINDER:

Visit [kitchenaid.com/quickstart](http://kitchenaid.com/quickstart) for additional Instructions with videos, inspiring recipes, and tips on how to use your Burr Grinder.

# TROUBLESHOOTING

If your Burr Grinder should malfunction or fail to operate during use, please check the following:

**⚠ WARNING**



**Electrical Shock Hazard**

**Plug into a grounded 3 prong outlet.**

**Do not remove ground prong.**

**Do not use an adapter.**

**Failure to follow these instructions can result in death, fire, or electrical shock.**

- Is the Burr Grinder plugged in? Check to see if the Burr Grinder is plugged into a grounded 3 prong outlet. If it is, unplug the Burr Grinder, then plug it into the same outlet again. If it still does not work, check the fuse or circuit breaker on the electrical circuit the Burr Grinder is connected to and make sure the circuit is closed. If it does not run after taking these steps, a foreign object may be jamming the cutting burrs. Refer to "Care and cleaning" section for detailed information on cleaning the cutting burrs.

- If the Burr Grinder runs when switched on, but coffee does not grind: The burrs require cleaning or are worn. Refer to "Care and cleaning" section for detailed information on cleaning the cutting burrs.
- If the Burr Grinder is operating normally, but stops abruptly: Immediately turn off the Burr Grinder. A coffee bean may have jammed the cutting burrs. Refer to "Care and cleaning" section for detailed information on cleaning the cutting burrs.
- If the grind is too coarse, or the Burr Grinder isn't producing an acceptable range of grinds: Refer to the "Adjusting the burrs for a finer or coarser grind" section for more information.


If the problem is not due to one of the above items, see the "Arranging for Service" chapter in the "Warranty and service" section.

Do not return the Burr Grinder to the retailer, as they do not provide service.

# WARRANTY AND SERVICE

## KITCHENAID® BURR GRINDER WARRANTY FOR THE 50 UNITED STATES, THE DISTRICT OF COLUMBIA, PUERTO RICO, AND CANADA

This warranty extends to the purchaser and any succeeding owner for Burr Grinders operated in the 50 United States, the District of Columbia, Puerto Rico, and Canada.

<b>Length of Warranty:</b>	One Year Full Warranty from date of purchase.
<b>KitchenAid Will Pay for Your Choice of:</b> 	Hassle-Free Replacement of your Burr Grinder. See the next page for details on how to arrange for service, or call the Customer eXperience Center toll-free at <b>1-800-541-6390</b> . OR The replacement parts and repair labor costs to correct defects in materials and workmanship. Service must be provided by an Authorized KitchenAid Service Center.
<b>KitchenAid Will Not Pay for:</b>	<ul style="list-style-type: none"> <li><b>A.</b> Repairs when your Burr Grinder is used in other than normal single family home use.</li> <li><b>B.</b> Damage resulting from accident, alteration, misuse or abuse.</li> <li><b>C.</b> Any shipping or handling costs to deliver your Burr Grinder to an Authorized Service Center.</li> <li><b>D.</b> Replacement parts or repair labor costs for Burr Grinders operated outside the 50 United States, District of Columbia, Puerto Rico, and Canada.</li> </ul>
<p><b>DISCLAIMER OF IMPLIED WARRANTIES; LIMITATION OF REMEDIES</b></p> <p>IMPLIED WARRANTIES, INCLUDING TO THE EXTENT APPLICABLE WARRANTIES OF MERCHANTABILITY OR FITNESS FOR A PARTICULAR PURPOSE, ARE EXCLUDED TO THE EXTENT LEGALLY PERMISSIBLE. ANY IMPLIED WARRANTIES THAT MAY BE IMPOSED BY LAW ARE LIMITED TO ONE YEAR, OR THE SHORTEST PERIOD ALLOWED BY LAW. SOME STATES AND PROVINCES DO NOT ALLOW LIMITATIONS OR EXCLUSIONS ON HOW LONG AN IMPLIED WARRANTY OF MERCHANTABILITY OR FITNESS LASTS, SO THE ABOVE LIMITATIONS OR EXCLUSIONS MAY NOT APPLY TO YOU.</p> <p>IF THIS PRODUCT FAILS TO WORK AS WARRANTED, CUSTOMER'S SOLE AND EXCLUSIVE REMEDY SHALL BE REPAIR OR REPLACEMENT ACCORDING TO THE TERMS OF THIS LIMITED WARRANTY. KITCHENAID AND KITCHENAID CANADA DO NOT ASSUME ANY RESPONSIBILITY FOR INCIDENTAL OR CONSEQUENTIAL DAMAGES. This warranty gives you specific legal rights and you may also have other rights which vary from state to state or province to province.</p>	

## WARRANTY AND SERVICE

### HASSLE-FREE REPLACEMENT WARRANTY – 50 UNITED STATES, DISTRICT OF COLUMBIA, AND PUERTO RICO

---

We're so confident the quality of our products meets the exacting standards of KitchenAid that, if your Burr Grinder should fail within the first year of ownership, KitchenAid will arrange to deliver an identical or comparable replacement to your door free of charge and arrange to have your original Burr Grinder returned to us. Your replacement unit will also be covered by our one year limited warranty.

If your Burr Grinder should fail within the first year of ownership, simply call our

toll-free Customer eXperience Center at **1-800-541-6390** Monday through Friday. Please have your original sales receipt available when you call. Proof of purchase will be required to initiate the claim. Give the consultant your complete shipping address. (No P.O. Box numbers, please.)

When you receive your replacement Burr Grinder, use the carton, packing materials, and prepaid shipping label to pack up your original Burr Grinder and send it back to KitchenAid.

### HASSLE-FREE REPLACEMENT WARRANTY – CANADA

---

We're so confident the quality of our products meets the exacting standards of the KitchenAid brand that, if your Burr Grinder should fail within the first year of ownership, we will replace your Burr Grinder with an identical or comparable replacement. Your replacement unit will also be covered by our one year limited warranty.

If your Burr Grinder should fail within the first year of ownership, simply call our toll-free Customer eXperience Center

at **1-800-807-6777** Monday through Friday. Please have your original sales receipt available when you call. Proof of purchase will be required to initiate the claim. Give the consultant your complete shipping address.

When you receive your replacement Burr Grinder, use the carton, packing materials, and prepaid shipping label to pack up your original Burr Grinder and send it back to KitchenAid.

### ARRANGING FOR SERVICE AFTER THE WARRANTY EXPIRES, OR ORDERING ACCESSORIES AND REPLACEMENT PARTS

---

#### **In the United States and Puerto Rico:**

For service information, or to order accessories or replacement parts, call toll-free at **1-800-541-6390** or write to:

Customer eXperience Center,  
KitchenAid Small Appliances,  
P.O. Box 218, St. Joseph, MI 49085-0218

#### **Outside the United States and Puerto Rico:**

Consult your local KitchenAid dealer or the store where you purchased the Burr Grinder for information on how to obtain service.

#### **For service information in Canada:**

Call toll-free **1-800-807-6777**.

#### **For service information in Mexico:**

Call toll-free **01-800-0022-767**.

DISCOVER MORE. DÉCOUVREZ PLUS. DESCUBRA MÁS.  
KITCHENAID.COM/QUICKSTART



PRODUCT QUESTIONS OR RETURNS  
QUESTIONS SUR LE PRODUIT OU LES RETOURS  
PREGUNTAS SOBRE EL PRODUCTO O DEVOLUCIONES

USA: 1.800.541.6390 | KitchenAid.com  
CANADA: 1.800.807.6777 | KitchenAid.ca

**KitchenAid**<sup>®</sup>  
FOR THE WAY IT'S MADE.<sup>®</sup>

®/™ © 2016 KitchenAid. All rights reserved. Used under license in Canada.

®/™ © 2016 KitchenAid. Tous droits réservés. Utilisé sous licence au Canada.

®/™ © 2016 KitchenAid. Todos los derechos reservados. Usada en Canadá bajo licencia.