



LEARN MORE

In an effort to conserve natural resources, this dishwasher includes a condensed User Guide. A complete User Guide can be downloaded at www.jennair.com/manuals.

For future reference, please make a note of your product model and serial numbers. These can be located on a label in the tub along the left outer edge.

Model Number _____ Serial Number _____

Register your dishwasher at www.jennair.com. In Canada, register your dishwasher at www.jennair.ca.

Para una version de estas instrucciones en español, visite www.jennair.com.

Your safety and the safety of others are very important.

We have provided many important safety messages in this manual and on your appliance. Always read and obey all safety messages.



This is the safety alert symbol.

This symbol alerts you to potential hazards that can kill or hurt you and others.

All safety messages will follow the safety alert symbol and either the word "DANGER" or "WARNING."

These words mean:

DANGER

You can be killed or seriously injured if you don't immediately follow instructions.

WARNING

You can be killed or seriously injured if you don't follow instructions.

All safety messages will tell you what the potential hazard is, tell you how to reduce the chance of injury, and tell you what can happen if the instructions are not followed.

IMPORTANT SAFETY INSTRUCTIONS

WARNING: When using the dishwasher, follow basic precautions, including the following:

- Read all instructions before using the dishwasher.
- Use the dishwasher only for its intended function.
- Use only detergents or rinse agents recommended for use in a dishwasher, and keep them out of the reach of children.
- When loading items to be washed:
 - 1) Locate sharp items so that they are not likely to damage the door seal; and
 - 2) Load sharp knives with the handles up to reduce the risk of cut-type injuries.
- Do not wash plastic items unless they are marked "dishwasher safe" or the equivalent. For plastic items not so marked, check the manufacturer's recommendations.
- Do not touch the heating element during or immediately after use.
- Do not operate the dishwasher unless all enclosure panels are properly in place.
- Do not tamper with controls.
- Do not abuse, sit on, or stand on the door, lid, or dish racks of the dishwasher.
- To reduce the risk of injury, do not allow children to play in or on the dishwasher.
- Under certain conditions, hydrogen gas may be produced in a hot water system that has not been used for two weeks or more. HYDROGEN GAS IS EXPLOSIVE. If the hot water system has not been used for such a period, before using the dishwasher turn on all hot water faucets and let the water flow from each for several minutes. This will release any accumulated hydrogen gas. As the gas is flammable, do not smoke or use an open flame during this time.
- Remove the door or lid to the washing compartment when removing an old dishwasher from service or discarding it.

SAVE THESE INSTRUCTIONS

State of California Proposition 65 Warnings:

WARNING: This product contains one or more chemicals known to the State of California to cause cancer.

WARNING: This product contains one or more chemicals known to the State of California to cause birth defects or other reproductive harm.

⚠ WARNING



Tip Over Hazard

- Do not use dishwasher until completely installed.
- Do not push down on open door.
- Doing so can result in serious injury or cuts.

GROUNDING INSTRUCTIONS

■ For a grounded, cord-connected dishwasher:

The dishwasher must be grounded. In the event of a malfunction or breakdown, grounding will reduce the risk of electric shock by providing a path of least resistance for electric current. The dishwasher is equipped with a cord having an equipment-grounding conductor and a grounding plug. The plug must be plugged into an appropriate outlet that is installed and grounded in accordance with all local codes and ordinances.

WARNING: Improper connection of the equipment-grounding conductor can result in a risk of electric shock.

Check with a qualified electrician or service representative if you are in doubt whether the dishwasher is properly grounded. Do not modify the plug provided with the dishwasher; if it will not fit the outlet, have a proper outlet installed by a qualified electrician.

■ For a permanently connected dishwasher:

The dishwasher must be connected to a grounded metal, permanent wiring system, or an equipment-grounding conductor must be run with the circuit conductors and connected to the equipment-grounding terminal or lead on the dishwasher.

SAVE THESE INSTRUCTIONS

Key Usage Tips

Filtration system and Maintenance

The filter system consists of two parts, an upper filter assembly and lower filter.

IMPORTANT: To avoid damage to dishwasher, do not operate your dishwasher without filters properly installed. Be sure lower filter is securely in place and upper filter assembly is locked into place. If upper assembly turns freely, it is not locked into place.

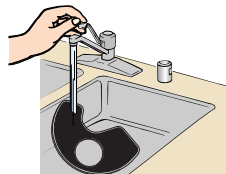
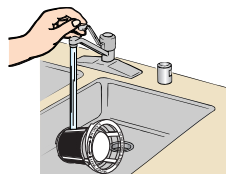
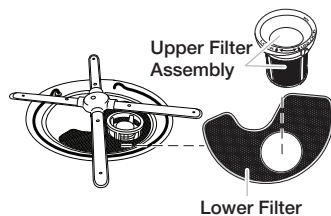
The filters may need to be cleaned when:

- Visible objects or soils are on upper filter assembly.
- Dishes feel gritty to the touch.

See "Filtration System" in full User Guide for complete removal and maintenance schedule.

IMPORTANT: Do not use wire brush, scouring pad, etc., as they may damage the filters.

Rinse filter under running water until soils are removed. If you have hard to remove soils or calcium deposits from hard water, a soft brush may be required.

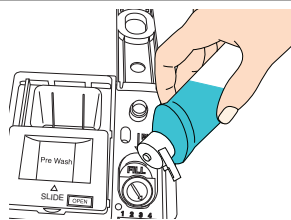


Drying - Rinse Aid is essential.

You must use a drying agent such as a rinse aid for good drying performance. Rinse aid along with the Precision Dry® or Precision Dry +® option will provide best drying and avoid excessive moisture in dishwasher interior.

Precision Dry

Precision Dry +



Energy efficiency

Energy efficiency is gained by extending cycle time and reducing the amount of wattage and water used during your dishwasher's cycle. For exceptional cleaning, cycles are longer due to the soak and pauses. Several models contain an optical water sensor used to determine water and energy consumption for great cleaning performance.

Efficient dishwashers run longer to save water and energy, just as driving a car slower saves on gas. Your first cycle will run longer to calibrate the optical water sensor.



Press start/resume every time you add a dish.

IMPORTANT: If anyone opens the door (such as, for adding a dish, even during the Delay Hours option), START/RESUME must be pressed each time.

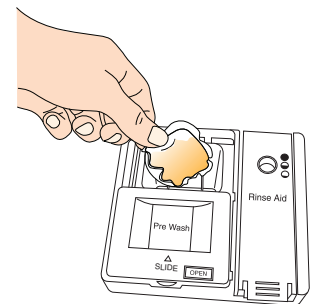
Push door firmly closed within 3 seconds of pressing START/RESUME. If door is not closed within 3 seconds, the Start indicator will flash, an audible tone will be heard, and cycle will not start.

START/
Resume

Repeat Last Cycle

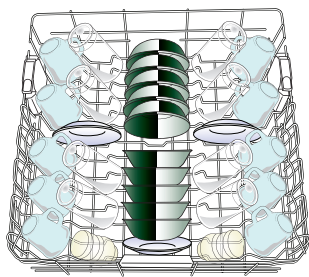
Recommended detergent

Tablets and packs are recommended for improved performance. See the "Add detergent" section of the online guide for more details when choosing powders, liquids and gels.

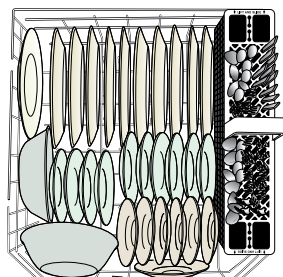


Operating Your Dishwasher

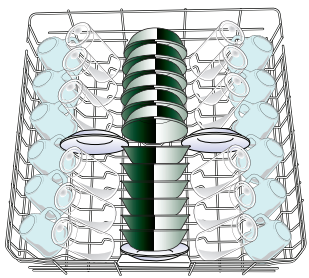
1. Prepare and Load the Dishwasher



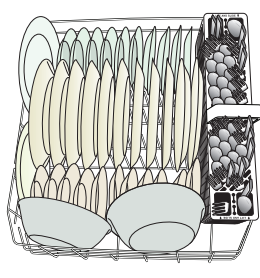
10 place load - upper rack



10 place load - lower rack



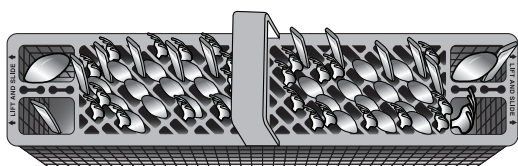
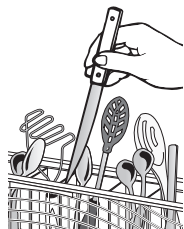
12 place load - upper rack



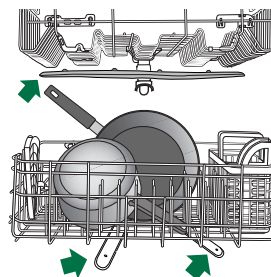
12 place load - lower rack

IMPORTANT: Remove leftover food, bones, toothpicks and other hard items from dishes. Remove labels from containers before washing.

- Make sure no items are blocking the detergent dispenser when the dishwasher door is closed.
- Items should be loaded with soiled surfaces facing down and inward to the spray, as shown in the graphics above. This will improve cleaning and drying results. Angle dirtiest dish surface downward, allowing space for water to flow up through rack and between dishes.
- Avoid overlapping items like bowls or plates that may trap food.
- Place plastics, small plates and glasses in upper rack.
- Wash only items marked “dishwasher safe.”
- To avoid thumping/clattering noises during operation: Load dishes so they do not touch one another. Make sure lightweight load items are secured in racks.
- When loading silverware, always place sharp items pointing down and avoid “nesting”.
- If your silverware does not fit into the designated slots, lift and slide covers off to remove them. Mix silverware types to keep them separated.
- Use slots in the covers and suggested loading patterns to keep your silverware separated for optimum wash.



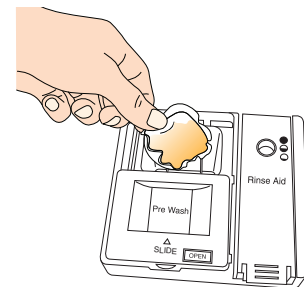
2. Check that all arms spin freely



3. Add Detergent

NOTE: If you do not plan to run a wash cycle soon, run a rinse cycle. Do not use detergent.

- Use automatic dishwasher detergent only. Add detergent just before starting a cycle.
- Fresh automatic dishwasher detergent results in better cleaning. Store tightly closed detergent container in a cool, dry place.



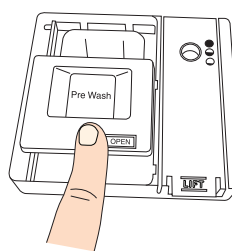
Detergents

Many detergents now come in several forms (gel packs, tablets, or powder packs).

It is recommended to use tablets and packs for convenience and improved performance. They have been proven better than powder, liquid or gel detergents at reducing filming on dishes. Using tablets and packs over time will start to reduce or eliminate white film. Also, by using a rinse aid, you can minimize repeat buildup of white film. These forms are suitable for all hardness and soil levels. Always place detergents in the main compartment and slide lid to close.

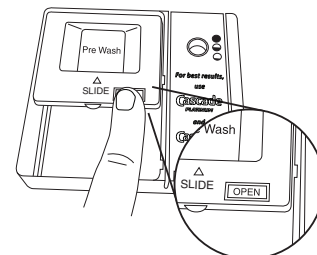
NOTE: Follow instructions on the package when using other dishwasher detergent types. See the online user guide for more information on powder, liquid and gel usage.

To close lid



Place selected detergent in the dispenser. Place finger, as shown, and slide lid closed. Press firmly until it clicks.

To open lid

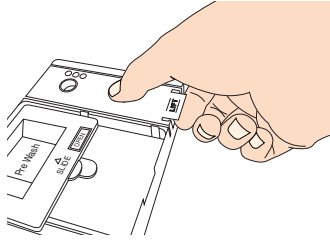


Push OPEN, as shown, and the lid will slide open.

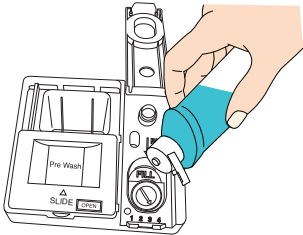
4. Add Rinse Aid

- Your dishwasher is designed to use rinse aid for good drying performance. Without rinse aid, your dishes and dishwasher interior will have excessive moisture. The heating and drying options will not perform as well without rinse aid.
- Rinse aid keeps water from forming droplets that can dry as spots or streaks. It also improves drying by allowing water to drain off of dishes after final rinse.

- To add rinse aid, open the dispenser lid by gently pushing in the center of the lid with your thumb while lifting up on the edge.



- Pour rinse aid into the opening until the indicator level shows that it is full.



- Close dispenser by pushing down gently on the lid.

NOTE: For most water conditions, the factory setting will give good results.

- If you are experiencing poor drying performance, you may want to try a higher setting. Turn the arrow adjuster to a higher setting to increase the amount of rinse aid.



5. Select a Cycle (cycles vary by model)

Efficient dishwashers run longer to save water and energy, just as driving a car slower saves on gas. Typical cycle time is approximately 2½ hours, but can take less or more time to complete depending on selections.

6. Select Options (options vary by model)

You can customize your cycles by pressing the options desired. If you change your mind, press the option again to turn off the option. Not all options are available for every cycle. If an invalid option is selected for a given cycle, the lights will flash.

7. Start or Resume a Cycle

NOTE: Run hot water at the sink nearest your dishwasher until the water is hot. Turn off water.

- Push door firmly closed within 3 seconds of pressing START/RESUME. If door is not closed within 3 seconds, the Start indicator will flash, an audible tone will be heard, and cycle will not start.
- IMPORTANT:** If anyone opens the door (such as, for adding a dish, even during the Delay Hours option), the START/RESUME button must be pressed each time.
- Press START/RESUME to repeat the same cycle and options as in the previous wash cycle.





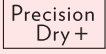


Cycle Guide


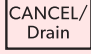
This information covers several different models. Your dishwasher may not have all of the cycles and options described.

CYCLES	SOIL LEVEL	WASH TIME* (MIN.) W/O OPTIONS		WATER USAGE GALLONS (LITERS)
		TYPICAL	MAX	
SENSOR WASH	Light to Medium	110	150	3.8 (14.5)
	Tough/Baked-On	125	190	5.0 (19.1)
	Heavy	125	190	7.7 (29.0)
Cookware/ Bakeware	Heavy/Baked-On	140	205	7.9 (30.0)
Normal Tableware	Light	110	150	2.8 (10.5)
	Medium	110	150	4.0 (15.0)
	Heavy	125	190	7.9 (30.0)
China/ Crystal	Light to Medium	105	145	4.2 (15.2)
	Heavy/Baked-On	120	185	7.7 (29.0)
1 Hour Wash	All soil levels	58	64	6.2 (23.5)
Refresh/ Rinse	All soil levels	17	20	2.4 (9.0)

OPTIONS	CAN BE SELECTED WITH	WHAT IT DOES	ADDED TIME TO CYCLE		ADDED WATER GALLONS (LITERS)
			TYPICAL	MAX	
Hi-Temp Wash	Sensor Wash Cookware/ Bakeware Normal Tableware	Raises the main wash temperature from 105°F (41°C) to either 130°F or 140°F (55°C or 60°C).	42	60	0 - 3.0 (0 - 11.2)

Sound On/Off - 3 Sec

OPTIONS		CAN BE SELECTED WITH	WHAT IT DOES	ADDED TIME TO CYCLE		ADDED WATER GALLONS (LITERS)
				TYPICAL	MAX	
	Raises the temperature with the power of steam before final rinse to help enhance shine, finish and reduce glass spots.	Sensor Wash Cookware/ Bakeware Normal Tableware	Raises main wash temperature from 105°F to 140°F (41°C to 60°C), steam clean before rinsing, final rinse temperature 140°F to 155°F (60°C to 68°C).	78	100	0 - 3.9 (0 - 14.9)
	For added convenience, use for washing a small load of dishes in the top rack to help keep the kitchen continuously clean.	Available with any cycle	Slightly faster wash for smaller loads	-7	-30	0
	Sanitizes dishes and glassware in accordance with NSF International NSF/ANSI Standard 184 for Residential Dishwashers. Certified residential dishwashers are not intended for licensed food establishments. Only sanitizing cycles have been designed to meet the requirements of the NSF/ANSI 184 performance standard for soil removal and for sanitization efficacy. There is no intention, either directly or indirectly, that all cycles on a NSF/ANSI 184 certified dishwasher meet the NSF/ANSI 184 performance standard for soil removal and for sanitization efficacy. The Sani indicator glows at the end of the cycle if the Sani Rinse option was successfully completed. If the indicator does not activate, it is probably due to the cycle being interrupted.	Sensor Wash Cookware/ Bakeware Normal Tableware Top Rack Wash	Raises main wash temperature from 105°F to 140°F (41°C to 60°C) and the final rinse from 140°F to 155°F (60°C to 68°C).	53	73	0 - 3.0 (0 - 11.2)
	Dries dishes with heat. This option with the use of rinse aid will provide the best drying performance. Plastic items are less likely to deform when loaded in the top rack. Turn Precision Dry® off for an air dry.	Available with any cycle except Refresh/Rinse	Activates the heating element at the end of the wash cycle to speed drying times. The option defaults to ON when any cycle is selected except for 1 Hour Wash.	44	52	0
						
	Runs the dishwasher at a later time or during off-peak electrical hours. Select a wash cycle and options. Press 4 Hour Delay. Press START/RESUME. Close the door firmly. NOTE: Anytime the door is opened (such as, to add a dish), the START/RESUME button must be pressed again to resume the delay countdown.	Available with any cycle	Delays the start of a cycle up to 4 hours.	240	240	0
 Hold 3 Sec	Avoids unintended use of the dishwasher between cycles, or cycle and option changes during a cycle. To turn on Lock, press and hold CONTROL LOCK for 3 seconds. The Control Lock light will stay on for a short time, indicating that it is activated, and all buttons are disabled. If you press any button while your dishwasher is locked, the light flashes 3 times. The dishwasher door can still be opened/closed while the controls are locked. To turn off Lock, press and hold CONTROL LOCK or 3 seconds. The light turns off.					

Control	Purpose	Comments
 Repeat Last Cycle	To start or resume a wash cycle.	If the door is opened during a cycle or power is interrupted, the Start/Resume indicator flashes. Press START/RESUME and push the door firmly closed within 3 seconds. NOTE: If the door is not closed within 3 seconds, the Start/Resume indicator will flash, an audible tone will be heard, and the cycle will not start.
	To reset any cycle or options during selection. To cancel a wash cycle after it has started.	Press CANCEL/DRAIN to reset any control selections made. See “Canceling a Cycle After Dishwasher Is Started” and “Changing a Cycle After Dishwasher Is Started” sections in the full online User Guide.

Control	Purpose	Comments
<div style="border: 1px solid black; padding: 2px; display: inline-block; margin-bottom: 5px;">Hi-Temp Wash</div> Sound On/Off - 3 Sec	To turn the audible tones on or off.	Press and hold HI-TEMP WASH for 3 seconds to turn the audible tones on or off. Only audible tones for confirming button presses can be turned on/off. Important audible tones, such as indicating a cycle has been interrupted, cannot be deactivated.
<div style="display: flex; justify-content: space-around; font-size: 8px;"> Add SaltWashingDryingCleanSanitized </div> <div style="text-align: center; margin: 5px 0;">OR</div> <div style="display: flex; justify-content: space-around; font-size: 8px;"> Add DishWashingDryingCleanSanitized </div>	To follow the progress of the dishwasher cycle.	Clean indicator glows when a cycle is finished. If you selected the Sani Rinse option, the Sanitized indicator glows when the cycle is finished. If your dishwasher did not properly sanitize your dishes, the indicator flashes at the end of the cycle. This can happen if the cycle is interrupted, or the water could not be heated to the required temperature. If Add Dish is glowing, you may add a dish even though the cycle has started. After adding a dish, press START/RESUME before closing the door. For Water Softener models, the Add Salt indicator will glow when it is time to add salt to the Salt Container. Refer to the Water Softener System User Instructions for instructions for filling the salt container. The Clean and Sanitized indicators turn off when you open and close the door, or press CANCEL.

Dishwasher Care

Cleaning the Dishwasher

Clean the exterior of dishwasher with a soft, damp cloth and mild detergent. If your dishwasher has a stainless steel exterior, affresh® Stainless Steel Cleaner - Part Number W10355016 is recommended.

Removal of Hard Water/Filming: It is recommended to use a monthly maintenance product such as affresh® Dishwasher Cleaner Part Number W10282479.

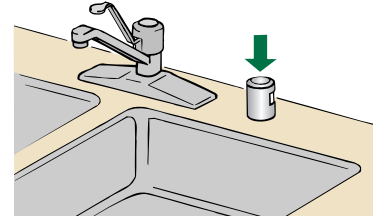
- Load your dishwasher (preferably with dishes affected by hard water/filming).
- Place tablet in main wash compartment of detergent dispenser.
- Select cycle/option best for heavily soiled dishes and start dishwasher.

NOTE: It is recommended to use a detergent tablet or pack for regular daily use.

If you have a drain air gap, check and clean it if the dishwasher isn't draining well.

To Reduce Risk of Property Damage During Vacation or Extended Time Without Use

- When you will not be using the dishwasher during the summer months, turn off the water and power supply to the dishwasher.
- Make sure the water supply lines are protected against freezing conditions. Ice formations in the supply lines can increase water pressure and cause damage to your dishwasher or home. Damage from freezing is not covered by the warranty.
- When storing your dishwasher in the winter, avoid water damage by having your dishwasher winterized by authorized service personnel.



Problem Solver

First try the solutions suggested here. If you need further assistance or more recommendations that may help you avoid a service call, refer to the warranty page in this manual and scan the code with your mobile device, or visit https://www.jennair.com/product_help. Contact us by mail with any questions or concerns at the address below:

In the U.S.A.:

Jenn-Air Brand Home Appliances
 Customer eXperience Center
 553 Benson Road
 Benton Harbor, MI 49022-2692

In Canada:

Jenn-Air Brand Home Appliances
 Customer eXperience Center
 200—6750 Century Avenue
 Mississauga, Ontario L5N 0B7

Please include a daytime phone number in your correspondence.

Please keep these User Instructions and model number information for future reference.

If you experience	Recommended Solutions
Dishes do not dry completely	<p>NOTE: Plastic and items with nonstick surfaces are difficult to dry because they have a porous surface which tends to collect water droplets. Towel drying may be necessary.</p> <p>Use of rinse aid along with the Precision Dry® or Precision Dry®+ option is needed for proper drying.</p> <p>Proper loading of items can affect drying.</p> <p>For improved results, place items on the more slanted side of the rack.</p> <ul style="list-style-type: none"> ■ Glasses and cups with concave bottoms hold water. This water may spill onto other items when unloading. ■ Unload the bottom rack first.
The Clean light is flashing	<p>Check the following:</p> <ul style="list-style-type: none"> ■ Is the overflow protection float able to move up and down freely? Press down to release. ■ Be sure the water supply is turned on to the dishwasher. (This is very important following the new installation of your dishwasher.) ■ Check for suds in the dishwasher. For more information on suds, see “Dishwasher does not clean completely.”

If you experience

Recommended Solutions

Spotting/Filming

NOTES:

- Liquid rinse aid is necessary for drying and to reduce spotting.
- Use the correct amount of detergent.

Confirm that the cloudiness is removable by soaking the item in white vinegar for 5 minutes. If the cloudiness disappears, it is due to hard water. Adjust the amount of detergent and rinse aid. See the “Dishwasher Care” section. If it does not come clear, it is due to etching.

Be sure the incoming water temperature is set at 120°F (49°C).

Try using the Hi-Temp Wash and Sani Rinse options.

To remove spotting, see the “Dishwasher Care” section.

Dishwasher does not clean completely

Be sure the dishwasher is loaded correctly. Improper loading can greatly decrease the washing performance. See the Operating Your Dishwasher” section.

Check filter to ensure it is properly installed. Clean it if needed. See the “Filtration System” section in the online guide for details.

Select the proper cycle for the type of soils. The Sensor Wash or Cookware/Bakeware cycle can be used for tougher loads.

Be sure the incoming water temperature is at least 120°F (49°C).

Use the proper amount of fresh detergent. More detergent is needed for heavier-soiled loads and hard water conditions.

Scrape food from dishes prior to loading. Do not prerinse.

If foam or suds are detected by the dishwasher sensing system, the dishwasher may not operate properly or may not fill with water.

Suds can come from:

- Using the incorrect type of detergent, such laundry as detergent, hand soap, or dish detergent for hand washing dishes.
- Not replacing the rinse aid dispenser cap after filling (or refilling) the rinse aid.
- Using an excessive amount of dishwasher detergent.

Interior tub lights do not light up.

- The interior lights turn on when the door is opened. The lights will turn off automatically after 15 minutes if the door is left open.
- If the lights do not turn on after closing and opening the door, call for Service.

JENN-AIR® DISHWASHER LIMITED WARRANTY

ATTACH YOUR RECEIPT HERE. PROOF OF PURCHASE IS REQUIRED TO OBTAIN WARRANTY SERVICE.

Please have the following information available when you call the Customer eXperience Center:

- Name, address and telephone number
- Model number and serial number
- A clear, detailed description of the problem
- Proof of purchase including dealer or retailer name and address

IF YOU NEED SERVICE:

1. Before contacting us to arrange service, please determine whether your product requires repair. Some questions can be addressed without service. Please take a few minutes to review the Troubleshooting or Problem Solver section of the Use and Care Guide, scan the QR code on the right to access additional resources, or visit <https://jennair.custhelp.com>.
2. All warranty service is provided exclusively by our authorized Jenn-Air Service Providers. In the U.S. and Canada, direct all requests for warranty service to:

**Jenn-Air Customer eXperience Center
1-800-JENNAIR (1-800-536-6247)**



<https://jennair.custhelp.com>

If outside the 50 United States or Canada, contact your authorized Jenn-Air dealer to determine whether another warranty applies.

WHAT IS COVERED

TWO YEAR LIMITED WARRANTY (PARTS & LABOR)

For two years from the date of purchase, when this major appliance is installed, operated and maintained according to instructions attached to or furnished with the product, Jenn-Air brand of Whirlpool Corporation or Whirlpool Canada LP (hereafter "Jenn-Air") will pay for factory specified replacement parts and repair labor to correct defects in materials or workmanship that existed when this major appliance was purchased, or at its sole discretion replace the product. In the event of product replacement, your appliance will be warranted for the remaining term of the original unit's warranty period.

**THIRD THROUGH FIFTH YEAR LIMITED WARRANTY
(CERTAIN COMPONENT PARTS ONLY - LABOR NOT INCLUDED)**

In the third through fifth years from the date of original purchase, when this major appliance is installed, operated and maintained according to the instructions attached to or furnished with the product, Jenn-Air brand will pay for factory specified replacement parts for the following components to correct non-cosmetic defects in materials or workmanship in these parts that prevent function of this major appliance and that existed when this major appliance was purchased. This is a limited 5-year warranty on the below named parts only and does not include repair labor.

- Dish racks
- All parts of the wash system
- Drain motor
- Electronic controls
- Heating element

**LIFETIME LIMITED WARRANTY
(STAINLESS STEEL TUB AND INNER DOOR LINER ONLY)**

For the lifetime of the product from the date of original purchase, when this major appliance is installed, operated and maintained according to instructions attached to or furnished with the product, Jenn-Air will pay for factory specified parts and repair labor for the following components to correct non-cosmetic defects in materials or workmanship that existed when this major appliance was purchased:

- Stainless steel tub
- Inner door liner

YOUR SOLE AND EXCLUSIVE REMEDY UNDER THIS LIMITED WARRANTY SHALL BE PRODUCT REPAIR AS PROVIDED HEREIN. Service must be provided by a Jenn-Air designated service company. This limited warranty is valid only in the United States or Canada and applies only when the major appliance is used in the country in which it was purchased. This limited warranty is effective from the date of original consumer purchase. Proof of original purchase date is required to obtain service under this limited warranty.

WHAT IS NOT COVERED

1. Commercial, non-residential or multiple-family use, or use inconsistent with published user, operator or installation instructions.
2. In-home Instruction on how to use your product.
3. Service to correct improper product maintenance or installation, installation not in accordance with electrical or plumbing codes or correction of household electrical or plumbing (i.e. house wiring, fuses or water inlet hoses).
4. Consumable parts (i.e. light bulbs, batteries, air or water filters, etc.).
5. Defects or damage caused by the use of non-genuine Jenn-Air parts or accessories.
6. Damage from accident, misuse, abuse, fire, floods, acts of God or use with products not approved by Jenn-Air.
7. Repairs to parts or systems to correct product damage or defects caused by unauthorized service, alteration or modification of the appliance.
8. Cosmetic damage including scratches, dents, chips, and other damage to appliance finishes unless such damage results from defects in materials and workmanship and is reported to Jenn-Air within 30 days.
9. Discoloration, rust or oxidation of surfaces resulting from caustic or corrosive environments including but not limited to high salt concentrations, high moisture or humidity or exposure to chemicals.
10. Pick-up or delivery. This product is intended for in-home repair.
11. Travel or transportation expenses for service in remote locations where an authorized Jenn-Air servicer is not available.
12. Removal or reinstallation of inaccessible appliances or built-in fixtures (i.e. trim, decorative panels, flooring, cabinetry, islands, countertops, drywall, etc.) that interfere with servicing, removal or replacement of the product.
13. Service or parts for appliances with original model/serial numbers removed, altered or not easily determined.

The cost of repair or replacement under these excluded circumstances shall be borne by the customer.

DISCLAIMER OF IMPLIED WARRANTIES

IMPLIED WARRANTIES, INCLUDING ANY IMPLIED WARRANTY OF MERCHANTABILITY OR IMPLIED WARRANTY OF FITNESS FOR A PARTICULAR PURPOSE, ARE LIMITED TO ONE YEAR OR THE SHORTEST PERIOD ALLOWED BY LAW. Some states and provinces do not allow limitations on the duration of implied warranties of merchantability or fitness, so this limitation may not apply to you. This warranty gives you specific legal rights, and you also may have other rights that vary from state to state or province to province.

DISCLAIMER OF REPRESENTATIONS OUTSIDE OF WARRANTY

Jenn-Air makes no representations about the quality, durability, or need for service or repair of this major appliance other than the representations contained in this warranty. If you want a longer or more comprehensive warranty than the limited warranty that comes with this major appliance, you should ask Jenn-Air or your retailer about buying an extended warranty.

LIMITATION OF REMEDIES; EXCLUSION OF INCIDENTAL AND CONSEQUENTIAL DAMAGES

YOUR SOLE AND EXCLUSIVE REMEDY UNDER THIS LIMITED WARRANTY SHALL BE PRODUCT REPAIR AS PROVIDED HEREIN. JENN-AIR SHALL NOT BE LIABLE FOR INCIDENTAL OR CONSEQUENTIAL DAMAGES. Some states and provinces do not allow the exclusion or limitation of incidental or consequential damages, so these limitations and exclusions may not apply to you. This warranty gives you specific legal rights, and you also may have other rights that vary from state to state or province to province.