

Earn BISSELL Rewards!

Register your product today!
See details on back page

REWIND SMARTCLEAN® **REWIND POWERCLEAN®** **REWIND POWERHELIX™** **REWIND CLEANVIEW®**
pet

USER'S GUIDE

58F8, 18M9, 84G9, 26T5 SERIES

- 2 Thank You
- 3 Safety Instructions
- 4 Product View
- 5 Assembly
- 6-8 Operations
- 8-12 Maintenance and Care
- 13 Troubleshooting
- 14 Replacement Parts
- 14 Accessories
- 15 Warranty
- 16 Consumer Services



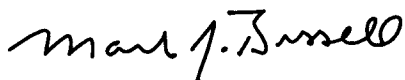
Thanks for buying a BISSELL vacuum

We're glad you purchased a BISSELL vacuum. Everything we know about floor care went into the design and construction of this complete, high-tech home cleaning system.

Your BISSELL vacuum is well made, and we back it with a limited three year warranty. We also stand behind it with a knowledgeable, dedicated Consumer Services department, so, should you ever have a problem, you'll receive fast, considerate assistance.

My great-grandfather invented the floor sweeper in 1876. Today, BISSELL is a global leader in the design, manufacture, and service of high quality homecare products like your BISSELL vacuum.

Thanks again, from all of us at BISSELL.



Mark J. Bissell
Chairman, President & CEO



IMPORTANT SAFETY INSTRUCTIONS

When using an electrical appliance, basic precautions should be observed, including the following:

READ ALL INSTRUCTIONS BEFORE USING YOUR UPRIGHT VACUUM.

Always connect to a polarized outlet (left slot is wider than right). Unplug from outlet when not in use and before conducting maintenance.

⚠ WARNING: To reduce the risk of fire, electric shock, or injury:

- Do not modify the polarized plug to fit a non-polarized outlet or extension cord.
- Do not leave vacuum cleaner unattended when it is plugged in.
- Unplug from outlet when not in use and before servicing.
- Unplug before attaching the TurboBrush.
- Do not use outdoors or on wet surfaces.
- Do not allow children to operate vacuum cleaner or use as a toy.
- Close attention is necessary when used by or near children.
- Do not use for any purpose other than described in this user's guide.
- Use only manufacturer's recommended attachments.
- Do not use with damaged cord or plug.
- If appliance is not working as it should, has been dropped, damaged, left outdoors, or dropped into water, have it repaired at an authorized service center.
- Do not pull or carry by cord, use cord as a handle, close a door on cord, or pull cord around sharp edges or corners. Do not run appliance over cord. Keep cord away from heated surfaces.
- Do not unplug by pulling on cord. To unplug, grasp the plug, not the cord.
- Do not handle vacuum cleaner or plug with wet hands.
- Do not put any object into openings. Do not use with any opening blocked; keep openings free of dust, lint, hair, and anything that may reduce air flow.
- Keep hair, loose clothing, fingers, and all parts of body away from openings and moving parts.

- Turn off all controls before plugging or unplugging vacuum cleaner.
- Use extra care when cleaning stairs.
- Do not pick up flammable materials (lighter fluid, gasoline, kerosene, etc.) or use in the presence of explosive liquids or vapors.
- Do not pick up toxic material (chlorine bleach, ammonia, drain cleaner, etc.).
- Do not use vacuum cleaner in an enclosed space filled with vapors given off by oil base paint, paint thinner, some moth proofing substances, flammable dust, or other explosive or toxic vapors.
- Do not pick up hard or sharp objects such as glass, nails, screws, coins, etc.
- Do not pick up anything that is burning or smoking, such as cigarettes, matches, or hot ashes.
- Do not use without filters in place.
- Use only on dry, indoor surfaces.
- Keep appliance on a level surface.
- Do not carry the vacuum cleaner while it is running.
- Hold plug when rewinding onto cord reel. Do not allow plug to whip when rewinding.

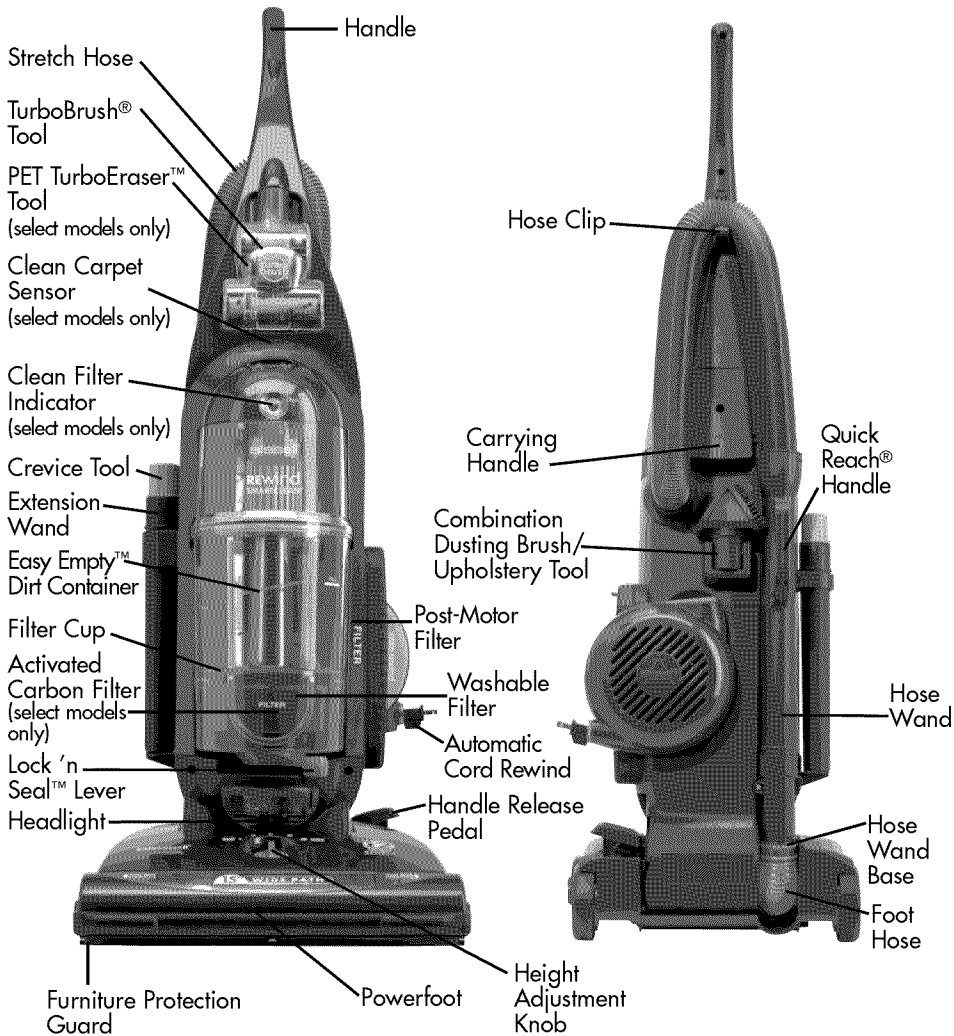
SAVE THESE INSTRUCTIONS FOR FUTURE USE

THIS APPLIANCE HAS A POLARIZED PLUG

To reduce the risk of electric shock, this appliance has a polarized plug (one blade is wider than the other). This plug will fit in a polarized outlet only one way. If the plug does not fit fully in the outlet, reverse the plug. If it still does not fit, contact a qualified electrician to install a proper outlet. Do not change the plug in any way.

This model is for household use only.

Product view



CAUTION:

Do not plug in your vacuum cleaner until you are familiar with all instructions and operating procedures.



WARNING:

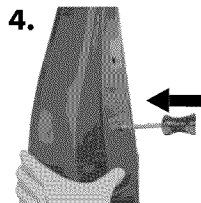
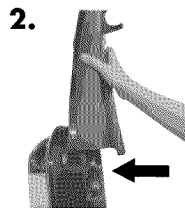
Plastic film can be dangerous. To avoid danger of suffocation, keep away from babies and children.

Assembly

You need: Phillips head screwdriver.

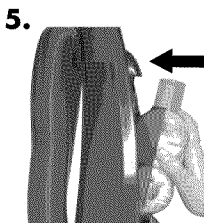
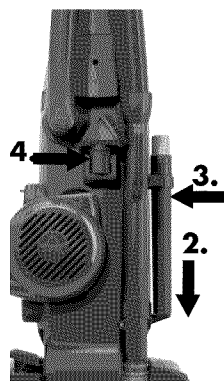
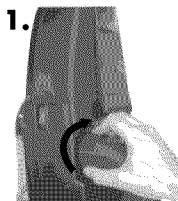
Attach handle to vacuum

1. Locate the vacuum handle and remove the screw packet taped to the base of the handle.
2. Stand the vacuum upright and slide the base of the handle firmly into the grooves at the top of the vacuum body.
3. Check to be sure the handle is fitted to the vacuum body. If there is a gap in front, continue to push firmly until the handle is flush.
4. Insert the screw provided from the screw packet into the existing hole. Tighten securely with a screwdriver.



Attach vacuum hose and tools

1. Line up tabs on the base of the Twist 'n Snap hose with the corresponding notches on the hose collar. Turn the hose to the right to lock into place.
2. Grasp the Quick Reach Handle and slide the end of the hose into the hose wand base. Snap the hose into the upper hose clip on handle.
3. Slide the extension wand and crevice tool together into storage clip.
4. Snap the combination tool into the storage clip.
5. Attach the TurboBrush Tool by lining up with base of holder in handle and push back to snap into place.



Operations

Automatic cord rewind

1. Gently pull out power cord and stop when yellow line is visible. Do not pull power cord beyond the red line. Plug cord into electrical outlet.
2. To return cord, turn vacuum power switch OFF, and remove plug from outlet. Hold plug and press automatic cord button to wind cord into reel. Do not allow plug to whip when rewinding.



Power switch

The power switch is located just below the handle on the side of the vacuum.

I - ON

O - OFF

Handle position

Press the handle release pedal with foot to place vacuum into cleaning positions.

1. **Upright:** For storage, transporting, and above floor cleaning with tools.
 - Transport in upright position by tilting vacuum on rear wheels and push forward or use carrying handle on back of handle base.
2. **Normal cleaning:** Press handle release pedal once for most household floor cleaning.
3. **Low cleaning:** From normal cleaning position, press handle release pedal once for cleaning under low furniture.



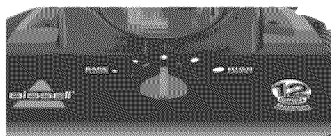
Height adjustments

Turn dial on powerfoot to adjust to one of five height adjustments. If dial is difficult to turn, tilt the cleaner back slightly to take the weight off the foot while turning.

Lowest Setting: For low pile carpet and bare floors.

Medium Setting: For medium pile carpet.

Highest Setting: For high pile and most shag carpet. Adjust to high setting if difficult to push.



Operations

Clean carpet sensor (select models only)

Clean carpet sensor detects dirt and debris being picked up while vacuum is in use.

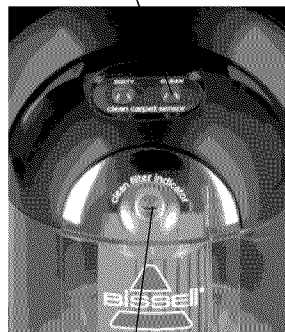
Red Light: Vacuum picking up dirt.

Alternate to Green and Red:

Slightly soiled area.

Green Light: Vacuum detects clean area.

Clean Carpet Sensor



Clean Filter Indicator

Clean filter indicator (select models only)

The indicator tells you when the air flow in your vacuum is reduced due to dirty filters or a clog in the hose. The indicator will remain green until the air flow is reduced - and then will change to red. When fully red, the airflow is greatly reduced or clogged by a dirty filter; follow instructions on pages 8 & 9 to clean/replace your filters.

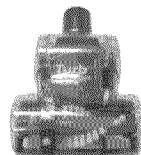
Tools

Attach desired tool to hose for above floor cleaning surfaces or hard to reach areas.

1. Remove Hose: with vacuum in upright position, grasp the Quick Reach Handle to separate hose from hose base.
2. Attach tools by firmly pushing onto vacuum hose or extension wand.
 - A. Combination dusting brush/ upholstery tool:**
Rotate for desired use. Use brush side to dust, or for blinds, books, lamps, shelves, and baseboards. Use upholstery side to for furniture, drapes, and fabrics.
 - B. Crevice Tool:** Use in tight, narrow spaces.
 - C. Extension Wand:** Use with desired attachment for longer reach.
 - D. TurboBrush Tool:** Use rotation brush action for small flat areas such as stairs and cushions. Press gently down and pull towards you in raking motion; too much pressure will cause brush to stop rotating. Select models include Pet TurboEraser™ Tool - follow same instructions for operation and maintenance.

NOTICE:

The floor brush will continue to rotate while you use your vacuum for above floor cleaning. To prevent carpet damage, do not lean on the vacuum or let the powerfoot tilt forward.



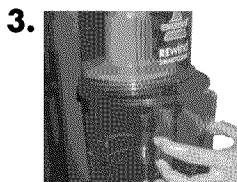
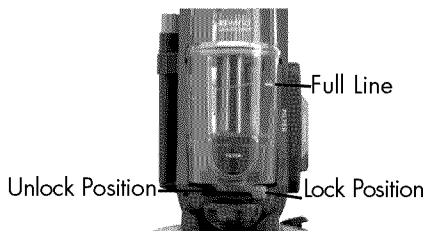
Operations

Empty Dirt Container

Empty when dirt reaches the “Full” line on the container.

1. Turn power OFF. Unplug power cord from electrical outlet.
2. Slide Lock ‘n Seal lever to “Unlock” position.
3. Grasp dirt cup handle portion and pull straight out to remove from vacuum and empty.
4. Place dirt container back in the vacuum and slide lever to lock position.

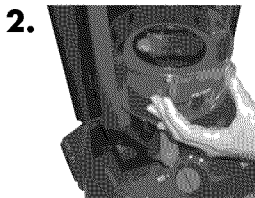
NOTE: The dirt container may be washed in warm water with mild detergent. Make sure it is completely dry before replacing.



Maintenance and care

Cleaning the inner & outer circular filter

1. Turn power OFF. Unplug vacuum cord from electrical outlet.
2. Remove dirt container. Grasp the filter located at the bottom of the dirt container, lift and pull straight out.
DO NOT PULL CIRCULAR FOAM FILTER OUT OF THE FILTER CUP WHILE IT IS STILL IN THE VACUUM.
3. Grasp the plastic tab on the top of the circular foam filters; twist to unlock and pull out.



Maintenance and care

Cleaning the inner & outer circular filter continued

4. Separate the outer foam filter and inner pleated circular filter. Wash each individually by hand in warm water. Mild detergent may be used if desired. Rinse well; let filters completely air dry before replacing in filter cup.
5. Wash filter cup in warm water with mild detergent. Completely air dry before reassembling with filters.
DO NOT PUT IN DISHWASHER.
6. The upper tank and louvers can be wiped clean with a damp cloth. Reach underneath the upper tank and turn the rim of the louvers to the left to unlock. Pull straight down and remove. Make sure all parts are completely dry before replacing.
7. To replace louvers, position top of louvers inside clear center cavity and turn toward the right to lock tabs into place.

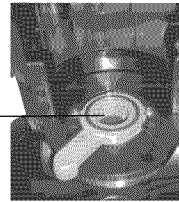


Cleaning the pre-motor filter

The pre-motor filter protects the motor from debris.

1. Turn power OFF. Unplug vacuum cord from electrical outlet.
2. The pre-motor filter is located underneath the filter cup in the round center portion of the Lock 'n Seal lever.
3. Remove the small round filter and any debris on top of it. Rinse under warm water; air dry completely before replacing.

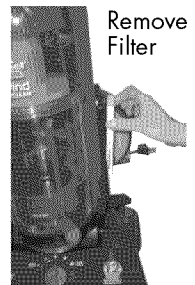
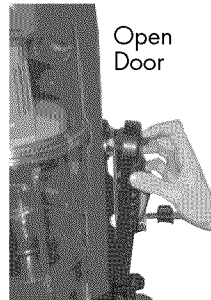
Pre-Motor Filter



Replacing the post-motor filter

The post-motor filter assists in the filtration process to return clean air to the room.

1. Turn power OFF. Unplug vacuum cord from electrical outlet.
2. Locate filter behind door on side of vacuum. Remove and replace when filter becomes dirty. The white, pleated filter is NOT washable.



Select model 18M9-W includes an Activated Carbon Filter that follows the same operation and replacement instructions.

Maintenance and care

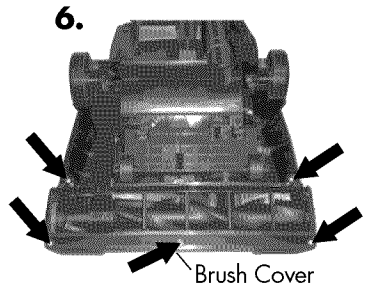
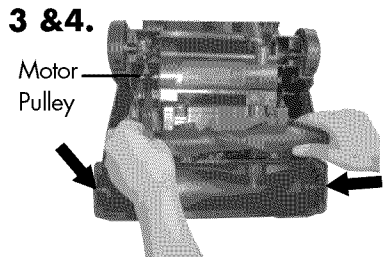
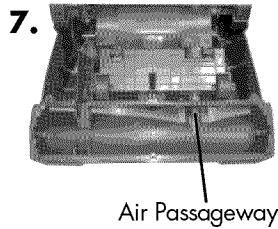
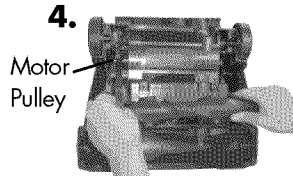
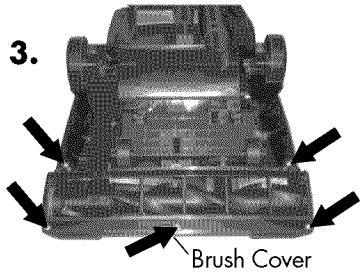
Checking rotating floor brush and drive belt

Check your vacuum's rotating floor brush and drive belt regularly for wear or damage.

1. Turn power OFF. Unplug vacuum cord from electrical outlet.
2. Place handle in low position and turn vacuum over so bottom side is facing up.
3. Using a screwdriver, remove the five screws and lift brush cover off.
4. Grasp rotating floor brush at both ends and lift.
5. Clean strings, hair and other debris from rotating floor brush, motor pulley and drive belt areas.
6. Check drive belt for wear, cuts or stressed areas.
7. Check air passageway for obstructions. Remove debris from this area.

Replace drive belt

1. Turn power OFF. Unplug vacuum cord from electrical outlet.
2. With rotating brush removed (steps 1-4 of checking rotating floor brush and drive belt), grasp old drive belt and remove from motor pulley. Discard old drive belt.
3. Place new drive belt over motor pulley and stretch other end over rotating floor brush in the space between the bristles.
4. Place ends of rotating floor brush down into slots.
5. Turn rotating floor brush by hand in the direction of the motor pulley. If properly installed, drive belt will center itself on rotating brush.
6. Reposition brush cover and fasten 5 screws back into place.

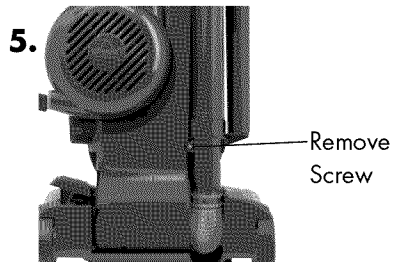
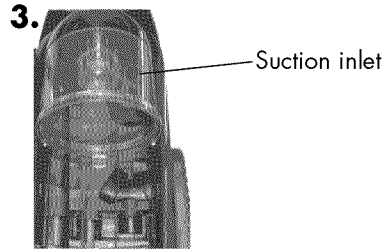


Maintenance and care

Clearing a clog

Low suction or poor pickup may be due to a clog in the vacuum. If you notice a change in the sound of the vacuum motor, check for clogs.

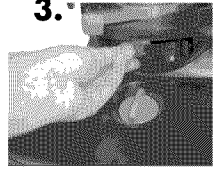
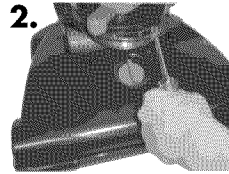
1. Turn power OFF. Unplug vacuum cord from electrical outlet.
2. Empty dirt container.
3. Check upper tank and suction inlet for clogs.
4. Grasp Quick Reach Handle and remove hose wand from base to check for clogs in the base, the wand, and the hose.
5. Remove the screw attaching the hose wand base to the vacuum. Straighten the hose wand base and unclog with long, narrow object such as broom stick.
6. If the clog persists, follow steps for checking rotating floor brush on page 10 and inspect the air passageway for obstructions.



Maintenance and care

Replace headlight

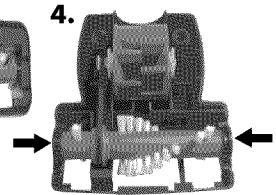
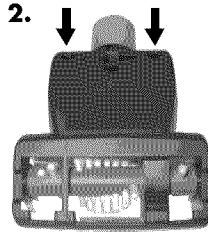
1. Turn power OFF. Unplug vacuum from electrical outlet.
2. Using a flat screwdriver or coin, insert into the slot on the right of the lens and gently push inner latch to the left to remove the lens.
3. Pull old bulb straight out of socket. Push new bulb straight into socket until locked into place.
4. Reposition lens by inserting the tab on the left side and then pushing the right side back into place.



TurboBrush Tool maintenance

Select models include **Pet TurboEraser Tool** that follows same maintenance instructions.

1. Turn power OFF. Unplug vacuum cord from electrical outlet.
2. Turn tool so bottom side faces up and remove the two screws.
3. Remove the faceplate and clear any obstructions
4. Remove the brush from the drive belt to clean debris.
5. Reposition the drive belt on the brush, and place ends of brush in slots on the side. Reposition faceplate and secure with two screws.





Troubleshooting

Vacuum cleaner won't turn on

Possible causes

1. Power cord not plugged in
2. Blown fuse/tripped breaker
3. Damaged cord

Remedies

1. Check electrical plug
2. Check/replace fuse or reset breaker
3. Refer to a BISSELL authorized service center for repair or replacement

Vacuum cleaner won't pick up

Possible causes

1. Clog in hose or elsewhere in vacuum
2. Filters are dirty
3. Dirt container is full
4. Hose not attached properly
5. Dirt container or upper tank not installed properly
6. Incorrect height adjustment
7. Crack or hole in hose
8. Broken or worn belt drive
9. Rotating floor brush jammed
10. Rotating floor brush bristles worn

Remedies

1. Follow instructions on page 11 for clearing clogs
2. Check and clean pre-motor and post-motor filters, see pages 8 & 9
3. Empty dirt container
4. Grasp quick reach handle and firmly push hose wand onto the hose wand base
5. Position correctly and lock in place
6. Adjust powerfoot to correct height setting
7. Check hose and replace if needed
8. Replace drive belt, see page 10
9. Remove brush and clean debris from brush ends
10. Replace brush

Tools won't pick up

Possible causes

1. Clog in hose or elsewhere in vacuum
2. Filters are dirty
3. Dirt container is full
4. Dirt container or upper tank not installed properly
5. Crack or hole in hose

Remedies

1. Follow instructions on page 11 for clearing clogs
2. Check and clean pre-motor and post-motor filters, see pages 8 & 9
3. Empty dirt container
4. Position correctly and lock in place
5. Check hose and replace if needed

Visible dirt escaping from cleaner

Possible causes

1. Dirt container full
2. Filters missing or installed incorrectly

Remedies

1. Empty dirt container
2. Check pre-motor and post-motor filters for correct installation

Cord will not retract

Possible causes

1. Knotted or twisted

Remedies

1. Follow instructions on page 6

Other maintenance or service not included in the manual should be performed by an authorized service representative.

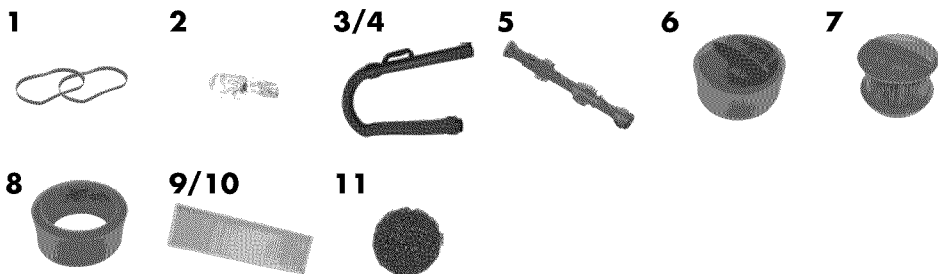
Thank you for selecting a BISSELL product.

Please do not return this product to the store.

**For any questions or concerns, BISSELL is happy to be of service.
Contact us directly at 1-800-237-7691.**

Replacement parts

Item	Part No.	Part Name
1	32074	Style 9 Drive Belt (2-Pack)
2	203-1297	Standard Headlight Bulb
3	203-2450	Hose Assembly (84G9/18M9/26T5 series)
4	203-2468	Hose Assembly (58F8 series)
5	203-2449	Brush Dowel (15")
6	32R9	Style 16 Inner and Outer Circular Pre-Motor Filter Set
7	73K1	Style 16 Inner Circular Pre-Motor Filter
8	69B1	Style 16 Outer Circular Pre-Motor Filter
9	32076	Style 7/9/16 Post-Motor Filter
10	203-1215	Style 7/9/16 Pre-Motor Filter
11	203-5685	Carbon Pre-Motor Filter (18M9-W model)



Accessories

These items are available for purchase as accessories for your BISSELL vacuum: To purchase call 1-800-237-7691 or visit www.bissell.com.

Item	Part No.	Part Name
1	203-2447	TurboBrush Tool
2	203-7529	Pet TurboEraser Tool (18M9-W model only)
3	203-1063	Crevice Tool
4	203-1099	Combination Dusting/Upholstery Brush
5	203-1084	Extension Wand



Warranty

This warranty gives you specific legal rights, and you may also have other rights which may vary from state to state. If you need additional instruction regarding this warranty or have questions regarding what it may cover, please contact BISSELL Consumer Services by E-mail, telephone, or regular mail as described below.

Limited Three Year Warranty

Subject to the *EXCEPTIONS AND EXCLUSIONS identified below, upon receipt of the product BISSELL Homecare, Inc. will repair or replace (with new or remanufactured components or products), at BISSELL's option, free of charge from the date of purchase by the original purchaser, for three years any defective or malfunctioning part.

See information below on "If your BISSELL product should require service".

This warranty applies to product used for personal, and not commercial or rental service. This warranty does not apply to fans or routine maintenance components such as filters, belts, or brushes. Damage or malfunction caused by negligence, abuse, neglect, unauthorized repair, or any other use not in accordance with the User's Guide is not covered.

If your BISSELL product should require service:

Contact BISSELL Consumer Services to locate a BISSELL Authorized Service Center in your area.

If you need information about repairs or replacement parts, or if you have questions about your warranty, contact BISSELL Consumer Services.

Website or E-mail:

www.bissell.com

Or Call:

BISSELL Consumer Services

1-800-237-7691

Monday - Friday 8 a.m. - 10 p.m. ET

Saturday 9 a.m. - 8 p.m. ET

Or Write:

BISSELL Homecare, Inc.

PO Box 3606

Grand Rapids, MI 49501

ATTN: Consumer Services

BISSELL HOMECARE, INC. IS NOT LIABLE FOR INCIDENTAL OR CONSEQUENTIAL DAMAGES OF ANY NATURE ASSOCIATED WITH THE USE OF THIS PRODUCT. BISSELL'S LIABILITY WILL NOT EXCEED THE PURCHASE PRICE OF THE PRODUCT.

Some states do not allow the exclusion or limitation of incidental or consequential damages, so the above limitation or exclusion may not apply to you.

*EXCEPTIONS AND EXCLUSIONS FROM THE TERMS OF THE LIMITED WARRANTY

THIS WARRANTY IS EXCLUSIVE AND IN LIEU OF ANY OTHER WARRANTIES EITHER ORAL OR WRITTEN. ANY IMPLIED WARRANTIES WHICH MAY ARISE BY OPERATION OF LAW, INCLUDING THE IMPLIED WARRANTIES OF MERCHANTABILITY AND FITNESS FOR A PARTICULAR PURPOSE, ARE LIMITED TO THE THREE YEAR DURATION FROM THE DATE OF PURCHASE AS DESCRIBED ABOVE.

Some states do not allow limitations on how long an implied warranty last so the above limitation may not apply to you.

NOTE: Please keep your original sales receipt. It provides proof of date of purchase in the event of a warranty claim.

Don't forget to register your product!

Registering is quick, easy and offers you benefits over the lifetime of your product. You'll receive:

BISSELL Rewards Points

Automatically earn points for discounts and free shipping on future purchases.

Faster Service

Supplying your information now saves you time should you need to contact us with questions regarding your product.

Product Support Reminders and Alerts

We'll contact you with any important product maintenance reminders and alerts.

Special Promotions

Optional: Register your email to receive notice of offers, contests, cleaning tips and more!

Visit www.bissell.com/registration now!

BISSELL consumer services

For information about repairs or replacement parts, or questions about your warranty, call:

BISSELL Consumer Services

1-800-237-7691

Monday - Friday 8 a.m. — 10 p.m. ET

Saturday 9 a.m. — 8 p.m. ET

Or write:

BISSELL Homecare, Inc.

PO Box 3606

Grand Rapids MI 49501

ATTN: Consumer Services

Or visit the BISSELL website - **www.bissell.com**

When contacting BISSELL, have model number of cleaner available.

Please record your Model Number: _____

Please record your Purchase Date: _____

NOTE: Please keep your original sales receipt. It provides proof of purchase date in the event of a warranty claim. See Warranty on page 15 for details.



©2013 BISSELL Homecare, Inc.
Grand Rapids, Michigan
All rights reserved. Printed in Korea
Part Number 110-4367
Rev 9/13
Visit our website at:
www.bissell.com

