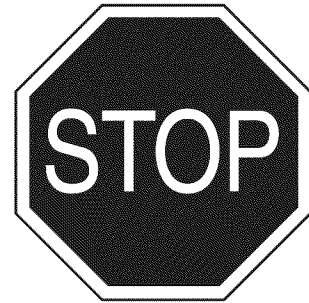


Owner's Manual



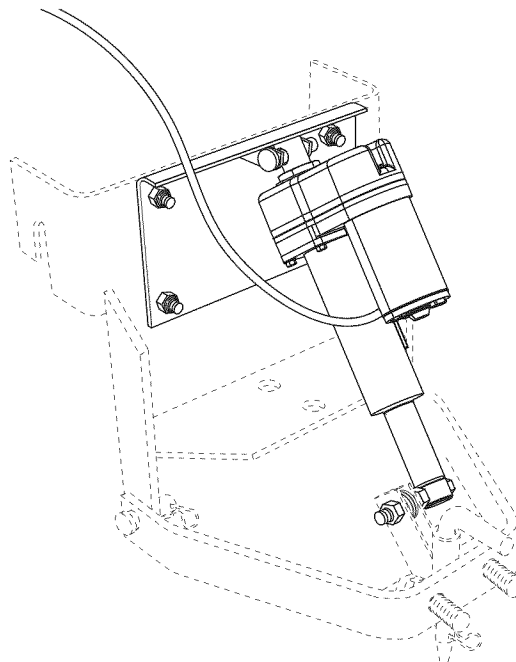
ELECTRIC ASSIST KIT

DO NOT RETURN TO STORE
For Missing Parts or Assembly
Questions Call 1-866-576-8388

MODEL NO. 486.245452

For Sleeve Hitch Models

486.24535, 486.24536, 486.24586 & 475 76 50-01



CAUTION:

Before using this product, read this manual and follow all Safety Rules and Operating Instructions.

- Safety
- Assembly
- Operation
- Maintenance
- Parts

Sears, Roebuck and Co., Hoffman Estates, IL 60179 U.S.A.
www.sears.com/craftsman

PRINTED IN U.S.A.

FORM NO. 42551 (04/05/12)

TABLE OF CONTENTS

SAFETY RULES.....	2	MAINTENANCE	6
FULL SIZE HARDWARE CHART	3	REPAIR PARTS ILLUSTRATION.....	7
CARTON CONTENTS.....	4	REPAIR PARTS LIST.....	7
ASSEMBLY.....	4	PARTS ORDERING/SERVICE	Back Page
OPERATION.....	6		

WARRANTY

CRAFTSMAN ONE YEAR FULL WARRANTY

FOR ONE YEAR from the date of purchase, this product is warranted against any defects in material or workmanship. A defective product will be replaced free of charge.

For warranty coverage details to obtain free replacement, visit the web site: www.craftsman.com

This warranty is void if this product is ever used while providing commercial services or if rented to another person.

This warranty gives you specific legal rights, and you may also have other rights which vary from state to state.

Sears Brands Management Corporation, Hoffman Estates, IL 60179

DO NOT RETURN TO STORE for Missing Parts or Assembly Questions
Call 1-866-576-8388 Attachment Hotline



SAFETY



Any power equipment can cause injury if operated improperly or if the user does not understand how to operate the equipment. Exercise caution at all times, when using power equipment.

- Read this owners manual and your vehicle and sleeve hitch owners manuals before using this electric assist kit with the sleeve hitch.
- Do not allow children to operate vehicle or sleeve hitch.
- Do not allow adults to operate the vehicle or sleeve hitch without proper instructions.
- Keep all nuts and bolts tight and be sure the equipment is in safe operating condition.



Look for this symbol to point out important safety precautions. It means--**Attention!! Become alert!! Your safety is involved.**

The model number and serial numbers will be found on a decal attached to the frame.

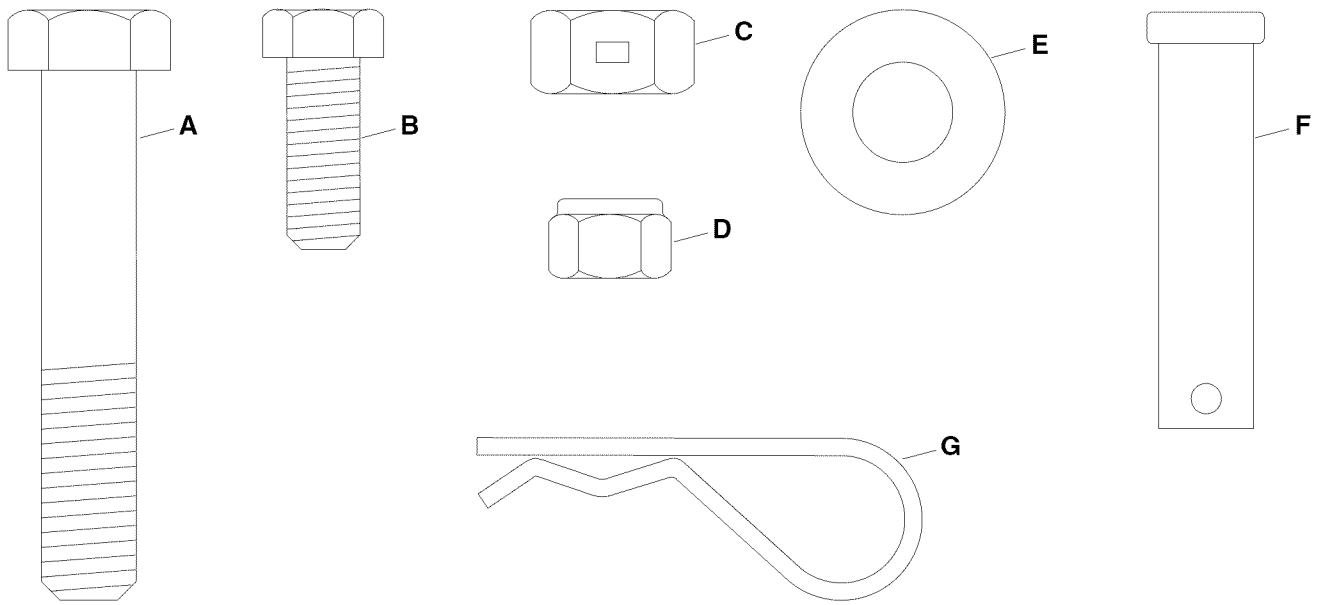
You should record both the serial number and the date of purchase and keep in a safe place for future reference.

MODEL NUMBER: 486.245452

SERIAL NUMBER: _____

DATE OF PURCHASE: _____

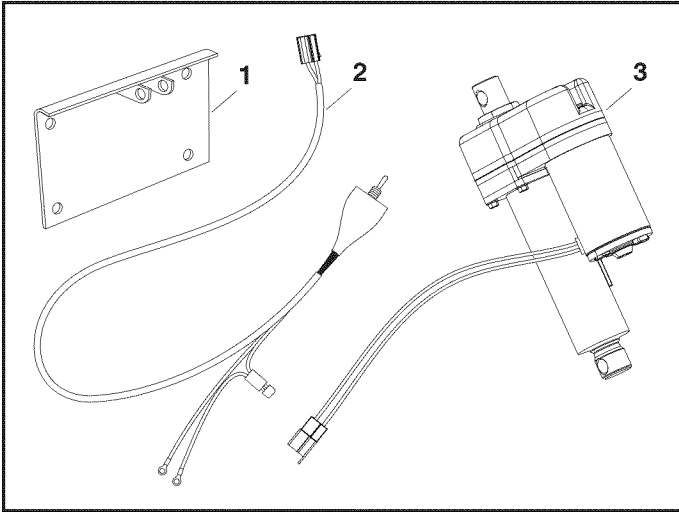
HARDWARE PACKAGE CONTENTS



KEY	QTY.	DESCRIPTION	KEY	QTY.	DESCRIPTION
A	1	Hex Bolt, 1/2" x 2-3/4"	E	5	Flat Washer, 1/2"
B	4	Hex Bolt, 3/8" x 1"	F	1	Clevis Pin, 1/2" x 2"
C	2	Hex Lock Nut, 1/2"	G	1	Hair Cotter Pin, 3/32"
D	4	Hex Nylock Nut, 3/8"			

ASSEMBLY

CARTON CONTENTS



1. Mount Bracket Assembly
2. Switch with Wiring
3. Linear Actuator

TOOLS REQUIRED FOR ASSEMBLY

- (2) 9/16" Wrenches or Adjustable Wrenches
- (2) 3/4" Wrenches or Adjustable Wrenches

PREPARING THE SLEEVE HITCH

- Remove the bolt and nut that attach the lift link to the sleeve hitch frame. Remove the handle and the pivot brackets from the sleeve hitch frame. See figure 1.

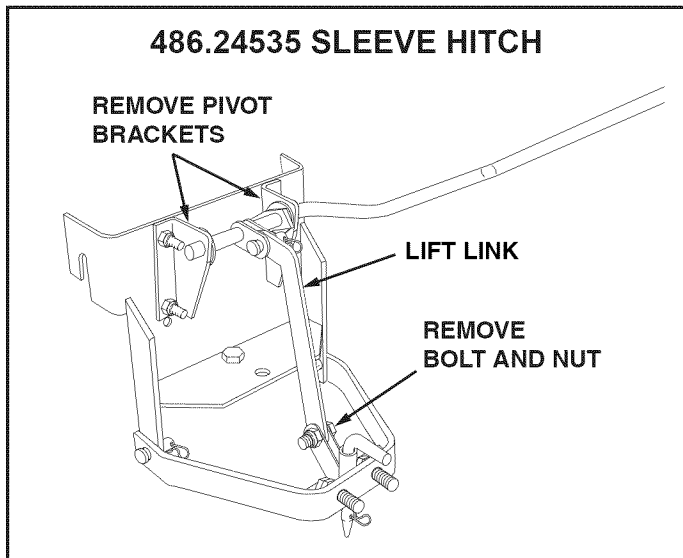


FIGURE 1

ATTACHING THE ELECTRIC ASSIST KIT

- Attach the mount bracket assembly to the sleeve hitch frame using four 3/8" x 1" hex bolts and 3/8" nylock hex nuts. See figure 2.

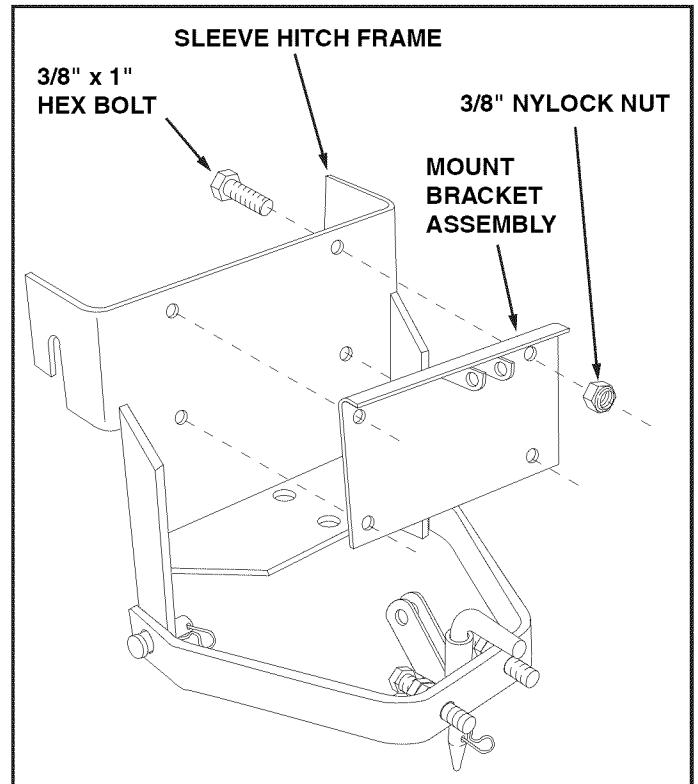


FIGURE 2

- Insert the 1/2" x 2-3/4" hex bolt into the lower shaft of the actuator and then screw a 1/2" hex lock nut as far as possible onto the bolt. See figure 3.
- Place up to five 1/2" flat washers between the anchor brackets on the lift assembly and insert the end of the 1/2" x 2-3/4" hex bolt through the anchor brackets and the washers. Screw a second 1/2" hex lock nut onto the bolt so that it is flush with the end of the bolt. Screw the first nut back against the anchor brackets and tighten both nuts securely. See figure 3.

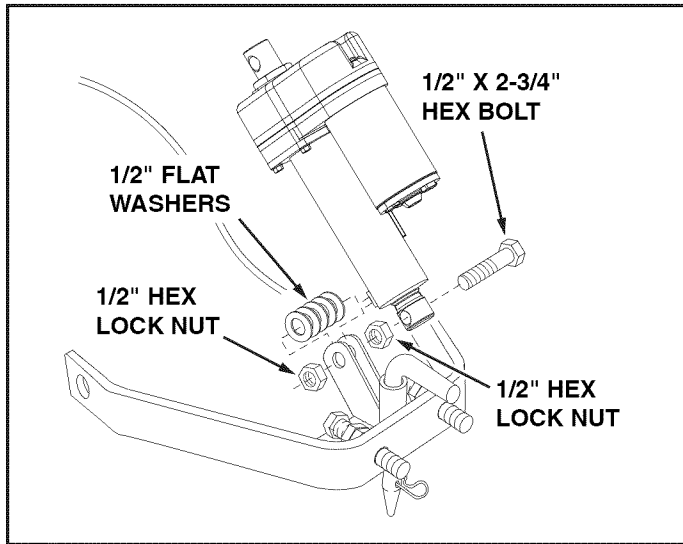


FIGURE 3

- Place the other end of the actuator between the anchor brackets on the mount bracket assembly. Insert the 1/2" x 2" clevis pin through the anchor brackets, securing it with the 3/32" hair cotter pin. See figure 4.

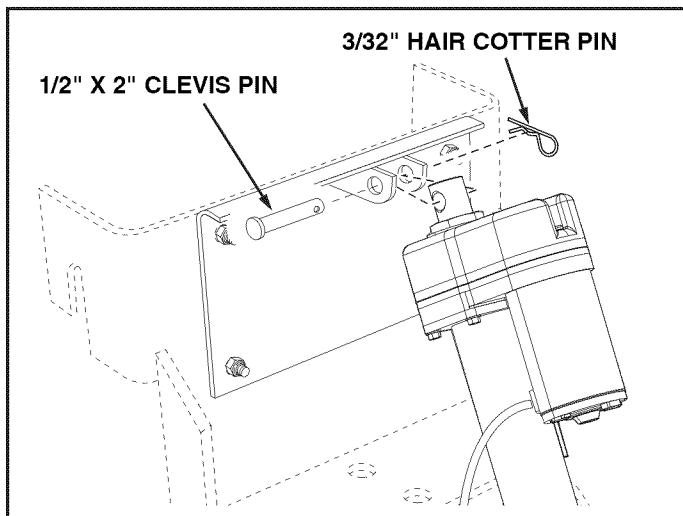


FIGURE 4

IMPORTANT: Connect to a 12 volt power source only.

- To connect the switch to the tractor battery, attach the terminal on the red wire (with fuse) to the positive post of the battery and the terminal on the black wire to the negative post of the battery.
- Route the flexible conduit to the rear of the tractor avoiding hot engine parts, moving parts and pinch points. Connect the plug on the conduit wires to the plug on the actuator wires.
- On some tractors the switch can be permanently attached to the tractor dash. **If the battery is located under the hood** and you wish to attach the switch to the tractor dash:
 - a. Determine if there is a location that provides adequate clearance to mount the switch inside the dash. Drill a 1/2" hole in that location. Do not drill a hole larger than 1/2".
 - b. Remove the hex nut from the actuator switch and then screw the round nut to about the mid-point on the threads.
 - c. Insert the switch into the hole you drilled in the tractor's dash and secure it with the hex nut you removed from the switch.

OPERATION

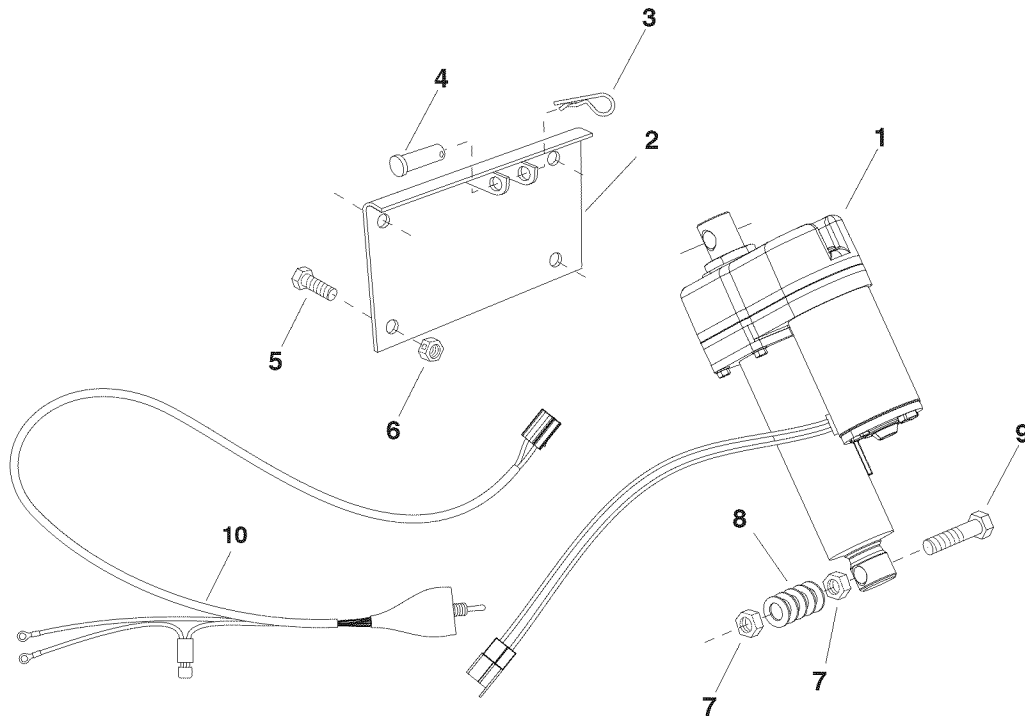
- Keep clear of the linear actuator, the sleeve hitch and the attached implement when raising and lowering.
- The linear actuator is equipped with a safety clutch. When the actuator reaches the end of its stroke the clutch will slip and make a loud clicking sound.

MAINTENANCE

- Clean off after each use.
- Store in a dry location.

PARTS

PARTS FOR MODEL 486.245452 ELECTRIC ASSIST KIT



REF	PART NO	QTY		REF	PART NO	QTY	
1	42549	1	Linear Actuator	7	43262	2	Hex Lock Nut, 1/2-13
2	64941	1	Mount Bracket Assembly	8	1540-59	5	Flat Washer
3	43343	1	Hair Cotter Pin, 3/32" x 2-5/16"	9	43510	1	Hex Bolt, 1/2-13 x 2-3/4"
4	HA23505	1	Clevis Pin, 1/2" x 2"	10	42550	1	Switch with Fuse
5	43001	4	Hex Bolt, 3/8-16 x 1"		42551	1	Owners Manual
6	HA21362	4	Nylock Nut, 3/8-16				

To order replacement parts, call Sears Parts Direct 1-800-252-1698
or go to www.searspartsdirect.com