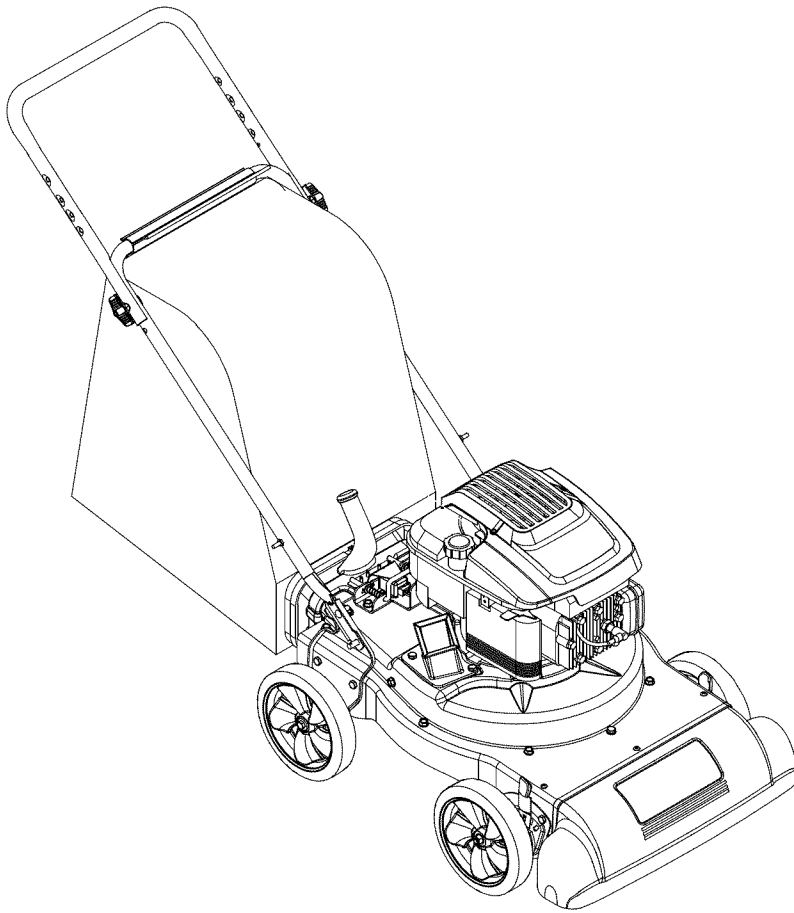


Operator's Manual



Chipper Shredder Vacuum

Model Series 020

IMPORTANT: Read safety rules and instructions carefully before operating equipment

Warning: This unit is equipped with an internal combustion engine and should not be used on or near any unimproved forest-covered, brush-covered or grass-covered land unless the engine's exhaust system is equipped with a spark arrester meeting applicable local or state laws (if any). If a spark arrester is used, it should be maintained in effective working order by the operator. In the State of California the above is required by law (Section 4442 of the California Public Resources Code). Other states may have similar laws. Federal laws apply on federal lands. A spark arrester for the muffler is available through your nearest authorized engine service dealer or contact the service department, P.O. Box 361131 Cleveland, Ohio 44136-0019.

MTD PRODUCTS LLC., P.O. Box 361131, Cleveland, Ohio 44136-0019

PRINTED IN U.S.A.

FORM NO. 770-10535F
(7/2004)

TABLE OF CONTENTS

Content	Page	Content	Page
Important Safe Operation Practices	3	Maintaining Your Yard Vacuum	8
Assembling Your Yard Vacuum	5	Troubleshooting	11
Know Your Yard Vacuum	6	Illustrated Parts List	12
Operating Your Yard Vacuum	7	Warranty	Back Cover

FINDING MODEL NUMBER

This Operator's Manual is an important part of your new yard vacuum. It will help you assemble, prepare and maintain the unit for best performance. Please read and understand what it says.



Before assembling your new equipment, copy the information from the model plate in the space provided below. You can locate the model plate by standing at the operating position and looking down at the rear of the equipment. This information will be necessary to use the manufacturer's web site and/or seek help from Customer Support or an authorized service dealer. A sample model plate is also shown below.



Copy the model number here: _____

Copy the serial number here: _____

CUSTOMER SUPPORT

Please **DO NOT** return the equipment to the retailer from where it was purchased without first contacting Customer Support.

If you have difficulty assembling this product or have any questions regarding the controls, operation or maintenance of this unit, you can seek help from the experts. Choose from the options below:

	<p>Visit mtdproducts.com for many useful suggestions. Click on Customer Support button and you will get the four options reproduced here. Click on the appropriate button and help is immediately available.</p> <div style="display: flex; justify-content: space-between; align-items: center; margin-top: 20px;"> <div style="width: 45%; text-align: center;"> <p><i>The answer you are looking for could be just a mouse click away!</i></p> </div> <div style="width: 45%; border: 1px solid black; padding: 5px;"> <div style="border-bottom: 1px solid black; padding: 2px;"> <p>Find Answers Click here to search our knowledge base. Search by product, keyword, or phrase.</p> </div> <div style="border-bottom: 1px solid black; padding: 2px;"> <p>My Stuff Login to check the status of your questions, modify your inquiries, or update your personal profile.</p> </div> <div style="border-bottom: 1px solid black; padding: 2px;"> <p>Service Locator Need local assistance? Click here to find authorized service centers in your area.</p> </div> <div style="padding: 2px;"> <p>Manuals Online Need a manual and/or parts list? Download literature from recent model years.</p> </div> </div> <div style="width: 45%; text-align: center;"> <p><i>The answer you are looking for could be just a mouse click away!</i></p> </div> </div>
	<p>To reach the Customer Support Department, please call 1-800-800-7310.</p>
	<p>The engine manufacturer is responsible for all engine-related issues with regards to performance, power-rating, specifications, warranty and service. Please refer to the engine manufacturer's Owner's/Operator's Manual, packed separately with your unit, for more information.</p>

SECTION 1: IMPORTANT SAFE OPERATION PRACTICES



WARNING: This symbol points out important safety instructions which, if not followed, could endanger the personal safety and/or property of yourself and others. Read and follow all instructions in this manual before attempting to operate this machine. Failure to comply with these instructions may result in personal injury. When you see this symbol—HEED ITS WARNING.

WARNING: Engine exhaust, some of its constituents, and certain vehicle components contain or emit chemicals known to State of California to cause cancer and birth defects or other reproductive harm.

WARNING: This machine was built to be operated according to the rules for safe operation in this manual. As with any type of power equipment, carelessness or error on the part of the operator can result in serious injury. This machine is capable of amputating hands and feet and throwing objects. Failure to observe the following safety instructions could result in serious injury or death.

General Operation

1. Read this operator's manual carefully in its entirety before attempting to assemble this machine. Read, understand, and follow all instructions on the machine and in the manual(s) before operation. Be completely familiar with the controls and the proper use of this machine before operating it. Keep this manual in a safe place for future and regular reference and for ordering replacement parts.
2. Be familiar with all controls and their proper operation. Know how to stop the machine and disengage them quickly.
3. Never allow children under 16 years old to operate this machine. Children 16 years old and over should read and understand the operation instructions and safety rules in this manual and should be trained and supervised by a parent.
4. Never allow adults to operate this machine without proper instruction.
5. Keep bystanders, helpers, pets, and children at least 75 feet from the machine while it is in operation. Stop machine if anyone enters the area.
6. Never run an engine indoors or in a poorly ventilated area. Engine exhaust contains carbon monoxide, an odorless and deadly gas.
7. Do not put hands and feet near rotating parts or in the feeding chambers and discharge opening. Contact with the rotating impeller can amputate fingers, hands, and feet.
8. Never attempt to unclog either the feed intake or discharge opening, remove or empty vacuum bag, or inspect and repair the machine while the engine is running. Shut the engine off and wait until all moving parts have come to a complete stop. Disconnect the spark plug wire and ground it against the engine.
3. Wear sturdy, rough-soled work shoes and close-fitting slacks and shirts. Loose fitting clothes or jewelry can be caught in movable parts. Never operate this machine in bare feet or sandals. Wear leather work gloves when feeding material in the chipper chute.
4. Before starting, check all bolts and screws for proper tightness to be sure the machine is in safe working condition. Also, visually inspect machine for any damage at frequent intervals.
5. Maintain or replace safety and instructions labels, as necessary.
6. To avoid personal injury or property damage use extreme care in handling gasoline. Gasoline is extremely flammable and the vapors are explosive. Serious personal injury can occur when gasoline is spilled on yourself or your clothes which can ignite. Wash your skin and change clothes immediately.
 - a. Use only an approved gasoline container.
 - b. Extinguish all cigarettes, cigars, pipes, and other sources of ignition.
 - c. Never fuel machine indoors.
 - d. Never remove gas cap or add fuel while the engine is hot or running.
 - e. Allow engine to cool at least two minutes before refueling.
 - f. Never over fill fuel tank. Fill tank to no more than 1/2 inch below bottom of filler neck to provide space for fuel expansion.
 - g. Replace gasoline cap and tighten securely.
 - h. If gasoline is spilled, wipe it off the engine and equipment. Move machine to another area. Wait 5 minutes before starting the engine.
 - i. Never store the machine or fuel container inside where there is an open flame, spark, or pilot light (e.g. furnace, water heater, space heater, clothes dryer, etc.)
 - j. To reduce a fire hazard, keep machine free of grass, leaves, or other debris build-up. Clean up oil or fuel spillage and remove any fuel soaked debris.
 - k. Allow machine to cool at least 5 minutes before storing.

Preparation

1. Thoroughly inspect the area where the equipment is to be used. Remove all rocks, bottles, cans, or other foreign objects which could be picked up or thrown and cause personal injury or damage to the machine.
2. Always wear safety glasses or safety goggles during operation or while performing an adjustment or repair, to protect eyes. Thrown objects which ricochet can cause serious injury to the eyes.

Operation

1. Do not put hands and feet near rotating parts or in the feeding chambers and discharge opening. Contact with the rotating impeller can amputate fingers, hands, and feet.
2. Before starting the machine, make sure the chipper chute, feed intake, and cutting chamber are empty and free of all debris.
3. Thoroughly inspect all material to be shredded and remove any metal, rocks, bottles, cans, or other foreign objects which could cause personal injury or damage to the machine.
4. If the impeller strikes a foreign object or if your machine should start making an unusual noise or vibration, immediately shut the engine off. Allow the impeller to come to a complete stop. Disconnect the spark plug wire, ground it against the engine and perform the following steps:
 - a. Inspect for damage.
 - b. Repair or replace any damaged parts.
 - c. Check for any loose parts and tighten to assure continued safe operation.
5. Do not allow an accumulation of processed material to build up in the discharge area. This can prevent proper discharge and result in kickback of material through the feed opening.
6. Do not attempt to shred or chip material larger than specified on the machine or in this manual. Personal injury or machine damage could result.
7. Never attempt to unclog either the feed intake or discharge opening while the engine is running. Shut the engine off, wait until all moving parts have stopped, disconnect the spark plug wire and ground it against the engine before clearing debris.
8. Never operate without vacuum bag and discharge chute properly attached to the machine. Never empty or change vacuum bag while the engine is running. Zippered end of vacuum bag must be kept closed at all times during operation.
9. Never operate without either the inlet nozzle or optional hose attachment properly attached to the machine. Never attempt to attach or change either attachment while the engine is running.
10. Keep all guards, deflectors and safety devices in place and operating properly.
11. Keep your face and body back and to the side of the chipper chute while feeding material into the machine to avoid accidental kickback injuries.

12. Never operate this machine without good visibility or light. Always be sure of your footing and keep a firm hold on the handles.
13. Do not operate this machine on a gravel surface.
14. Do not operate this machine while under the influence of alcohol or drugs.
15. Muffler and engine become hot and can cause a burn. Do not touch.
16. Never pick up or carry machine while the engine is running.

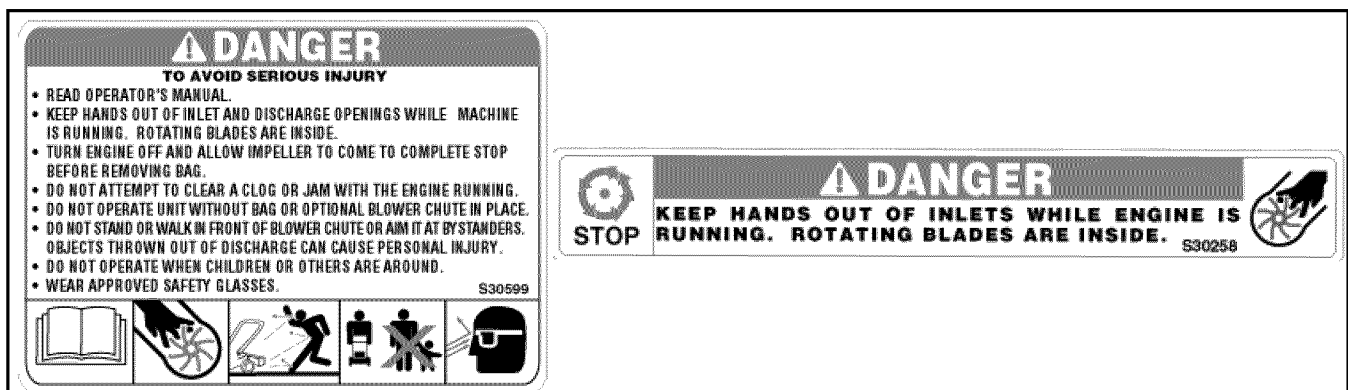
Maintenance And Storage

1. Never tamper with safety devices. Check their proper operation regularly.
2. Check bolts and screws for proper tightness at frequent intervals to keep the machine in safe working condition. Also, visually inspect machine for any damage and repair, if needed.
3. Before cleaning, repairing, or inspecting, stop the engine and make certain the impeller and all moving parts have stopped. Disconnect the spark plug wire and ground it against the engine to prevent unintended starting.
4. Do not change the engine governor settings or overspeed the engine. The governor controls the maximum safe operating speed of the engine.
5. Maintain or replace safety and instruction labels, as necessary.
6. Follow this manual for safe loading, unloading, transporting, and storage of this machine.
7. Never store the machine or fuel container inside where there is an open flame, spark or pilot light such as a water heater, furnace, clothes dryer, etc.
8. Always refer to the operator's manual for proper instructions on off-season storage.
9. If the fuel tank has to be drained, do this outdoors.
10. Observe proper disposal laws and regulations for gas, oil, etc. to protect the environment.

Your Responsibility

Restrict the use of this power machine to persons who read, understand and follow the warnings and instructions in this manual and on the machine.

NOTE: *Not all safety labels may apply to your Yard Vacuum.*



SECTION 2: ASSEMBLING YOUR LAWN MOWER

Removing Unit From Carton

- Remove staples, break glue on top flaps, or cut tape at carton end and peel along top flap to open.
- Remove loose parts if included with unit (i.e., operator's manual, grass bag, safety glasses etc.)
- Cut along corners, lay carton down flat, and remove packing material and bottle of oil, if any.
- Roll or slide unit out of carton and check carton thoroughly for loose parts.

Loose Parts In Carton

1. Handle Assembly
2. Bag
3. Blower Chute (on models so equipped)
4. Safety Glasses (not shown)

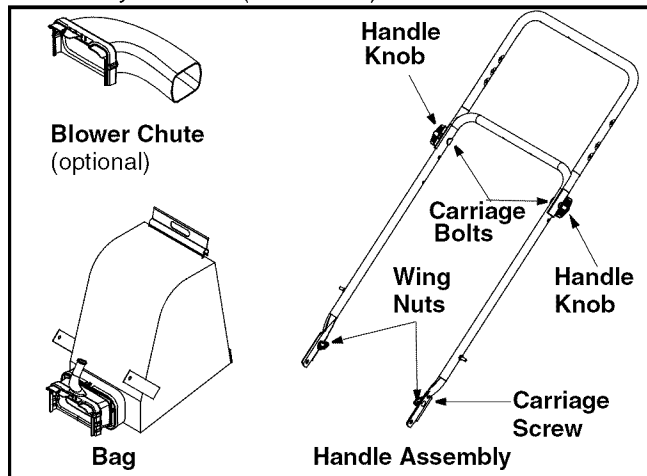


Figure 1

Before Assembly

- Before setting up your chipper shredder vacuum, disconnect the spark plug wire from the spark plug and ground to a stud on the engine.

Attaching The Handle

- Unfold the upper handle until it aligns with the lower handle as shown in Figure 1.
- Tighten both handle knobs securing the two handles. See Figure 1. Make sure both carriage bolts are seated properly on the handle.
- Remove carriage screws and wing nuts, called out in Figure 1, from the lower handle.
- Remove hairpin clips from the handle brackets on the chipper shredder vacuum. See Figure 2.
- Place bottom hole of the lower handle over weld pin on the handle bracket as shown in Figure 2. Secure with a hairpin clip removed earlier. Repeat on the other side.

- Insert carriage screw, removed earlier, through the upper hole in the lower handle and secure with wing nut. See Figure 2. Repeat on the other side.

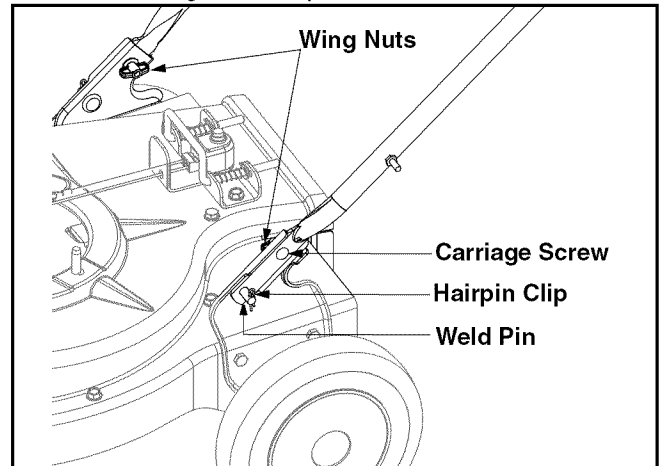


Figure 2

Attaching The Bag

- Grasp bag handle with one hand and slide locking rod on the mounting bracket with other hand toward engine. Use end of mounting bracket as leverage when sliding the locking rod. See Figure 3.

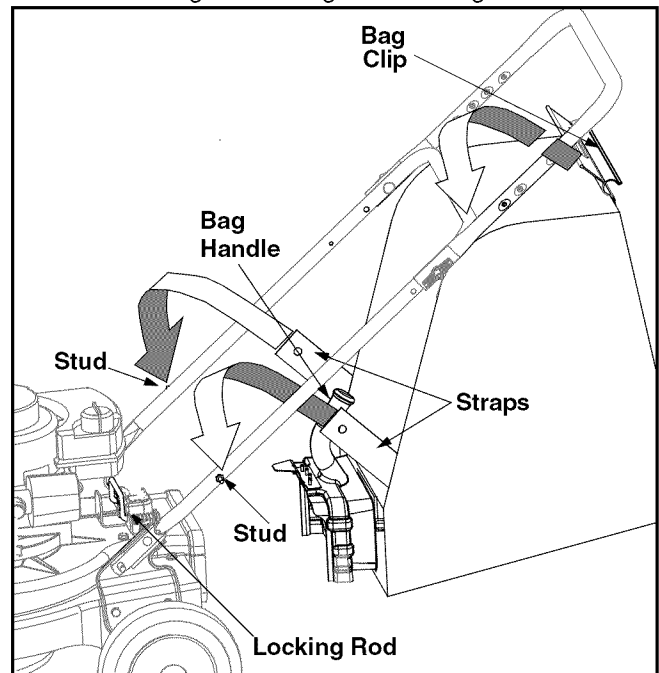


Figure 3

- Slip bag over the rim of the discharge opening and release locking rod to secure bag in place.
- Place the bag straps **over** the lower handle, hooking them on the studs. See Figure 3.
- Snap bag clip to the top of the lower handle. See Figure 3.

NOTE: The safety switch button attached to the mounting bracket must be fully depressed by the front tab on the bag handle when securing the bag or the engine will not start. See Figure 4.

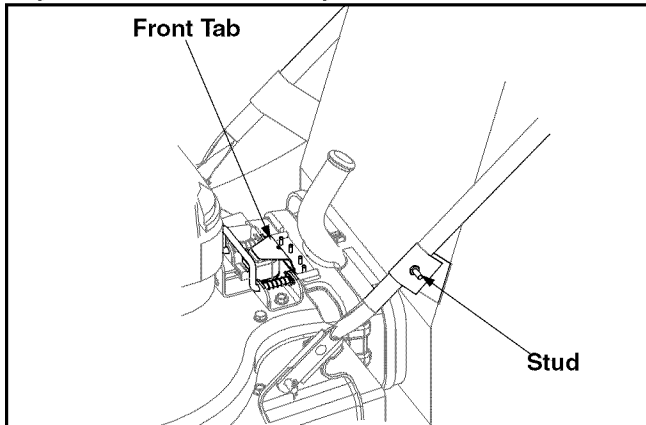


Figure 4

- Slip blower chute over rim of the discharge opening and release locking rod to secure chute in place. Make sure safety switch button is fully depressed by the front tab on the blower chute. See Figure 5.
- Raise the nozzle height to the highest setting when using the blower chute. Refer to nozzle height adjustment in the OPERATION section.

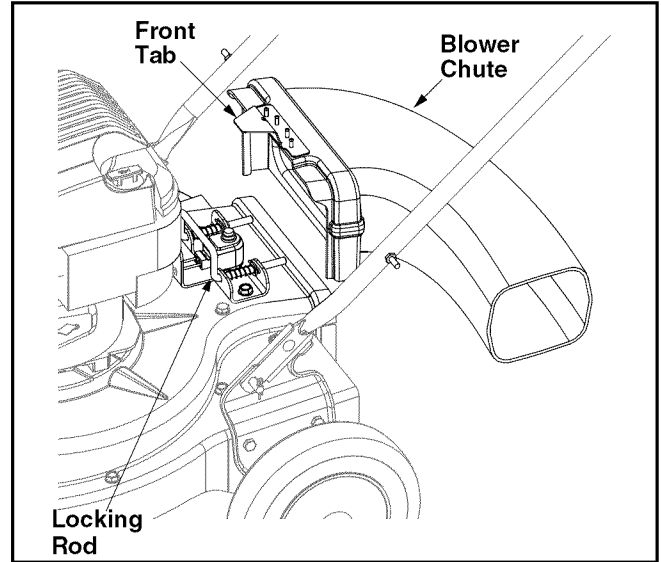


Figure 5

Attaching The Blower Chute (If equipped)

- Grasp blower chute with one hand and slide locking rod of the mounting bracket with other hand toward the engine. Use end of the mounting bracket as leverage when sliding the locking rod. See Figure 5.

SECTION 3: KNOW YOUR CHIPPER SHREDDER VACUUM

Read this operator's manual and safety rules before operating your chipper shredder vacuum. Compare the illustration in Figure 6 with your unit to familiarize yourself with the location of various controls and adjustments. Save this manual for future reference.

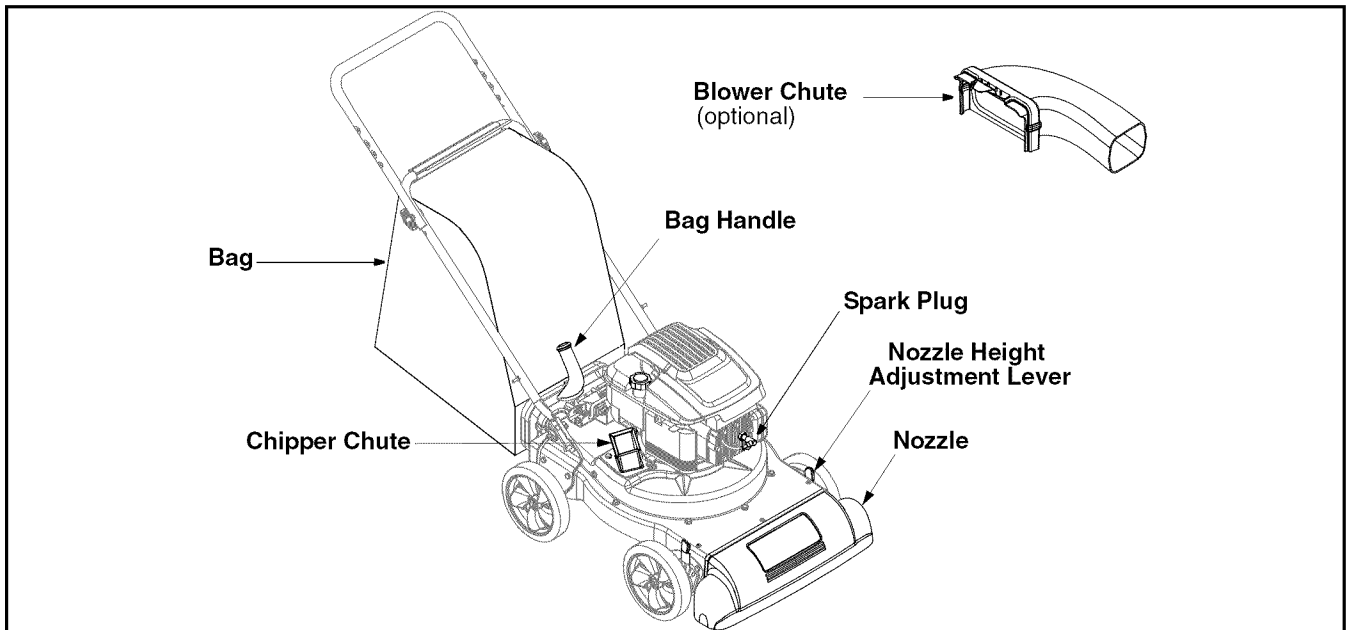


Figure 6

Bag

Collects shredded material fed through the chipper chute or vacuumed through the nozzle.

Bag Handle

Used to grasp bag in order to assist in attaching, removing and emptying bag.

Chipper Chute

Allow twigs and small branches up to 1-1/2" in diameter to be fed into the impeller for chipping.

Blower Chute (optional)

When attached to unit, the blower chute is used to blow or scatter yard waste such as leaves, pine needles, or small twigs across yard.

Nozzle Height Adjustment Lever

Used to adjust ground clearance of the nozzle ranging approximately 5/8" to 4-1/8".

Nozzle

Yard waste such as leaves and pine needles can be vacuumed up through the nozzle for shredding.

Engine Controls

See the accompanying engine manual for description of engine controls.

Stopping Engine

- Move throttle control lever to STOP or OFF position.
- Disconnect spark plug wire from spark plug and ground against the engine.

SECTION 4: OPERATING YOUR CHIPPER SHREDDER VACUUM



WARNING: Operation of any chipper shredder vacuum can result in foreign objects being thrown into the eyes, which can damage your eyes severely. Always wear safety glasses, provided with this unit, or eye shields to handle this equipment.

Gas And Oil Fill-Up

Service the engine with gasoline and oil as instructed in the separate engine manual packed with your chipper shredder vacuum. Read instructions carefully.



WARNING: Never fill fuel tank indoors with engine running or until the engine has been allowed to cool for at least two minutes after running.

Starting Engine

- Attach spark plug wire to spark plug. Make sure metal cap at the end of the spark plug is fastened securely over metal tip of the spark plug.
- Make sure safety switch wire is connected to engine and properly grounded.
- **Engines with choke lever:** Move choke lever on engine to CHOKE position. (A warm engine may not require choking).
- **Engines with primer:** Prime engine as instructed in the engine manual.
- The throttle control is located on the engine. Move this lever to FAST or ON position.
- Stand behind the unit, grasp starter handle and pull rope out slowly until engine reaches start of compression cycle (rope will pull slightly harder at this point).

- Pull rope with a rapid, continuous, full arm stroke. Keep a firm grip on the starter handle. Let the rope rewind slowly. Repeat until engine starts.
- When engine starts, move choke control (if so equipped) gradually to RUN position.



WARNING: Never run engine indoors or in a poorly ventilated area. Engine exhaust contains carbon monoxide, an odorless and deadly gas.

To Empty Bag

- Unhook straps from the lower handle and open clip from the top of the lower handle. See Figure 7.

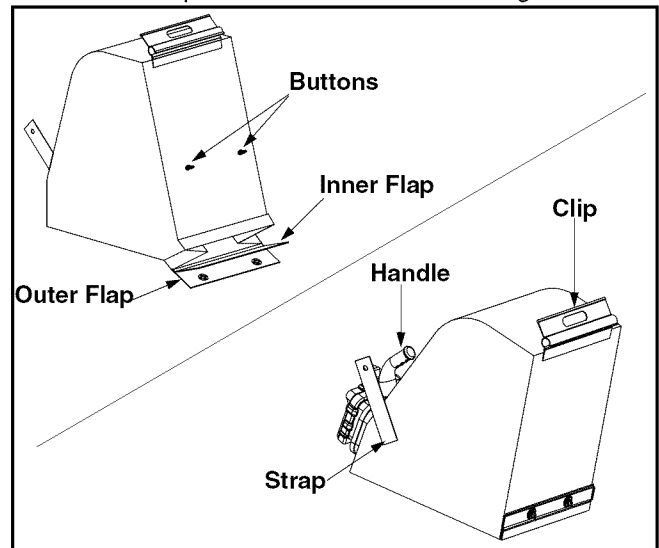


Figure 7

- Grasp bag handle with one hand and with the other, pull the lock rod on the mounting bracket toward engine to release.

- Remove bag from rim of the discharge opening. Refer to Figure 3.
- Twist the two buttons on the back of the bag to unlock and empty contents. See Figure 7.
- Hold bag handle and clip while emptying contents.
- Compress bag opening and fold inner flap over the opening. Fold outer flap over the inner flap and insert buttons on the bag through metal outlets.
- Twist buttons to lock the bag.

To Remove Blower Chute (If equipped)

- Grasp blower chute with one hand and with the other, pull the lock rod on the mounting bracket toward engine to release. Refer to Figure 5.
- Remove blower chute from rim of the discharge opening.

Using the Chipper Shredder Vacuum

Place both hands on top of the upper handle to push unit over yard waste. Yard waste such as leaves and pine needles can be vacuumed up through the nozzle for shredding. After material has been shredded by the flail blades on the impeller assembly, it will be discharged into catcher bag or through blower chute. Do not attempt to shred or chip any material other than vegetation found in a normal yard (i.e. branches, leaves, twigs, etc.) Avoid fibrous plants such as tomato vines until they are thoroughly dried out. Materials such as stalks or heavy branches up to 1-1/2" in diameter may be fed into the chipper chute.

IMPORTANT: The flail screen is located inside the housing in the discharge area. If the flail screen becomes clogged, remove and clean as instructed in the Maintenance section on page 9. For best performance, it is also important to keep the chipper blade sharp.



WARNING: Do not at any time make any adjustments without first stopping the engine and disconnecting the spark plug wire.

Nozzle Height Adjustment

The nozzle can be adjusted by moving the height adjustment lever to one of five positions, ranging from 5/8" to 4 1/8" ground clearance. Raise the nozzle height to vacuum a thick layer of leaves or to operate with the blower chute. Lower the nozzle height for smoother surfaces. See Figure 8.

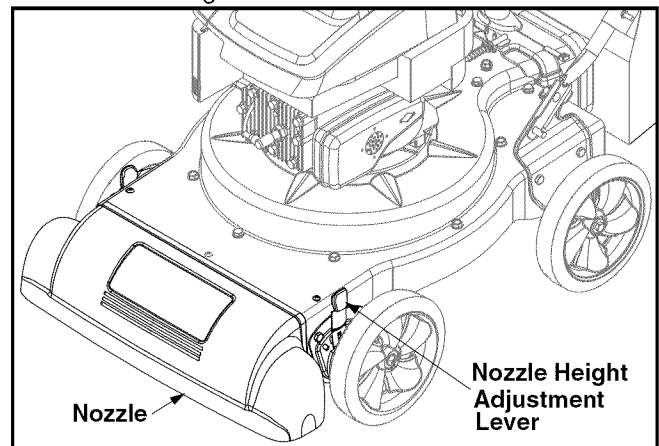


Figure 8

SECTION 5: MAINTAINING YOUR CHIPPER SHREDDER VACUUM



WARNING: Always stop engine and disconnect spark plug wire before cleaning, lubricating or doing any kind of maintenance on your machine.

Lubrication

Wheels: Lubricate each wheel shoulder screw once a season with light oil.

Nozzle height adjustment levers: Lubricate the pivot points of the nozzle height adjustment levers once a season with light oil.

Engine: Follow the separate engine manual packed with you unit for lubrication instructions.

Maintenance

Engine

Some general recommendations for good engine performance are listed below. Refer to the separate engine manual for further details and instructions.

- Check **engine oil level** before each use as instructed in the engine manual. Read and follow instructions carefully.
- Clean **air cleaner** every 25 hours under normal conditions or once a season. Clean every few hours under extremely dusty conditions. To service the air cleaner, refer to the engine manual.
- Clean **spark plug** and reset the gap once a season. Check engine manual for correct plug type and gap specifications.

Removing The Flail Screen

If the discharge area becomes clogged, remove the flail screen and clean area as follows:

- Stop the engine and make certain the chipper shredder vacuum has come to a complete stop.
- Disconnect spark plug wire from spark plug and ground against the engine.
- Remove the bag or blower chute (if equipped) from the unit as instructed in the OPERATION section to obtain access to flail screen.
- Remove self-tapping screw on right side of unit that attaches to the flail screen. See Figure 9.

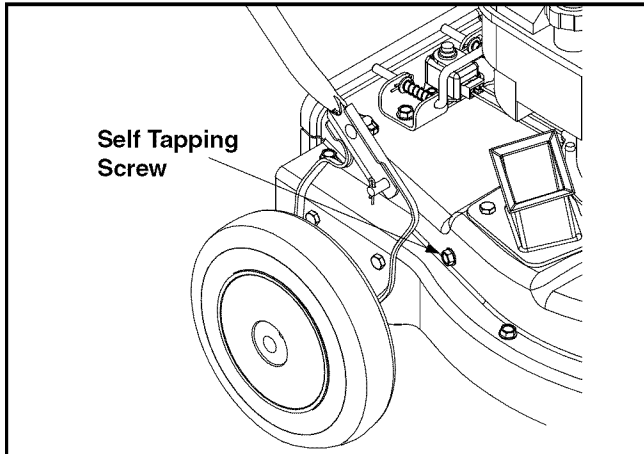


Figure 9

- Remove hex screw on top of rear housing mounting bracket and the flange lock nut that secures the flail screen. See Figure 10.
- Remove and clean the screen by scraping or washing with water. Reinstall the flail screen.

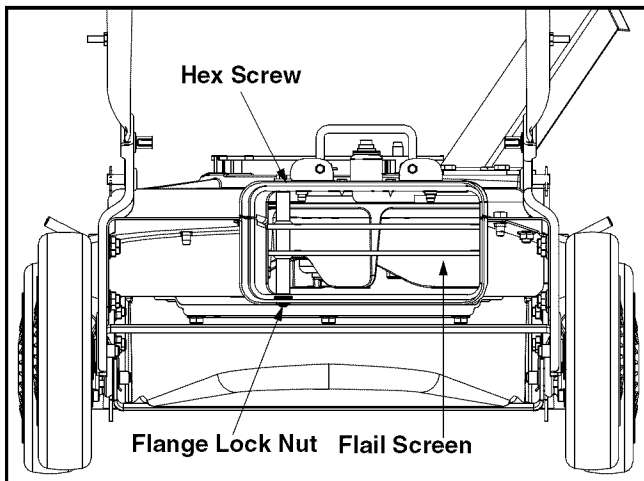


Figure 10

Sharpening Or Replacing Chipper Blade

IMPORTANT: Because the engine on this unit has a tapered crankshaft, a special impeller tool (part number 753-0900) is required to remove the impeller assembly. For further assistance, contact your local service dealer. The instructions below involve use of this tool.

NOTE: When tipping the unit, empty the fuel tank and keep spark plug side up.

- Disconnect spark plug wire and ground it away from the spark plug.
- Remove flange lock nuts and front wheels that attach to pivot arm assemblies. See Figure 11.

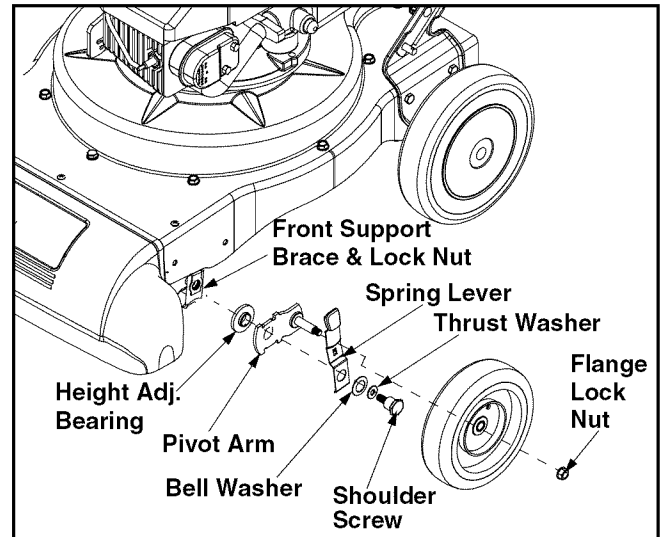


Figure 11

- Remove the shoulder screws and thrust and bell washers that go through the spring levers and pivot arms/height adjuster bearings to the front support brace. The front support brace and lock nut can be removed at this time as well.
- Remove the three screws on the upper housing that secure the nozzle cover and the nine screws that secure the lower housing to the upper housing. See Figure 12.

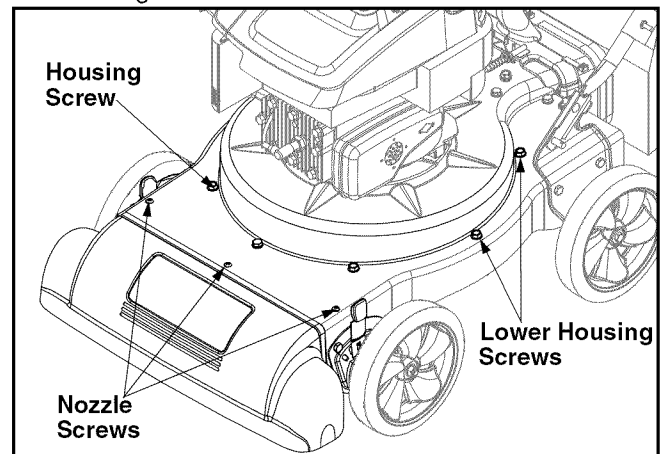


Figure 12

- Remove flange lock nut that secures flail screen to the lower housing. The flail screen does not have to be removed.
- Remove the hex bolt, lock washer, and flat washer that secure the impeller assembly to the crankshaft. See Figure 13.

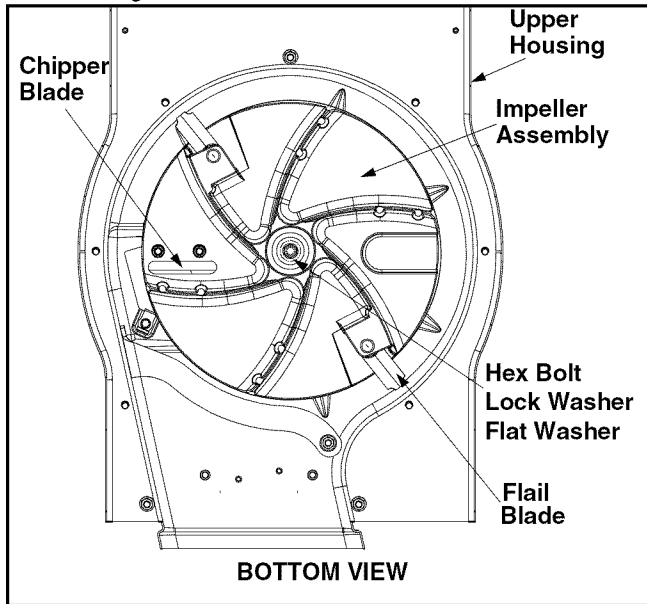


Figure 13

- Apply lubricant to the threads of impeller removal tool and then thread the tool into the crankshaft. Stop when the impeller assembly can move on the crankshaft.
- Remove the impeller assembly from the crankshaft. Unthread the impeller removal tool from the impeller assembly.

- Remove the blade using a 3/16" allen wrench on the outside of the blade and 1/2" wrench on the impeller assembly.
- Replace or sharpen chipper blade. The blade can be sharpened with a file or on a grinding wheel.
- When sharpening blade, protect hands by using gloves and follow the original angle of grind.
- Reassemble by performing the previous steps in the opposite order and manner of removal.
- Tighten blade screws to 210-250 in-lbs. Tighten impeller bolt to 375-425 in-lbs.

NOTE: Make certain chipper blade is reassembled with the sharp edge facing upward. See Figure 14.

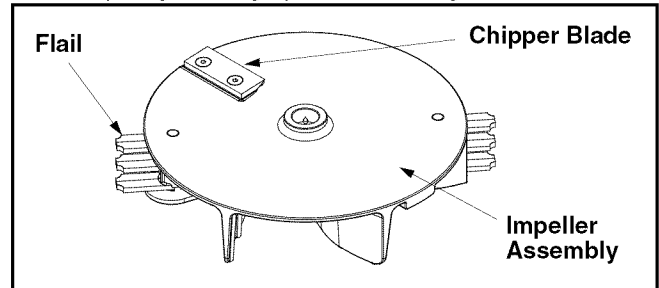


Figure 14

Storing Your Chipper Shredder Vacuum

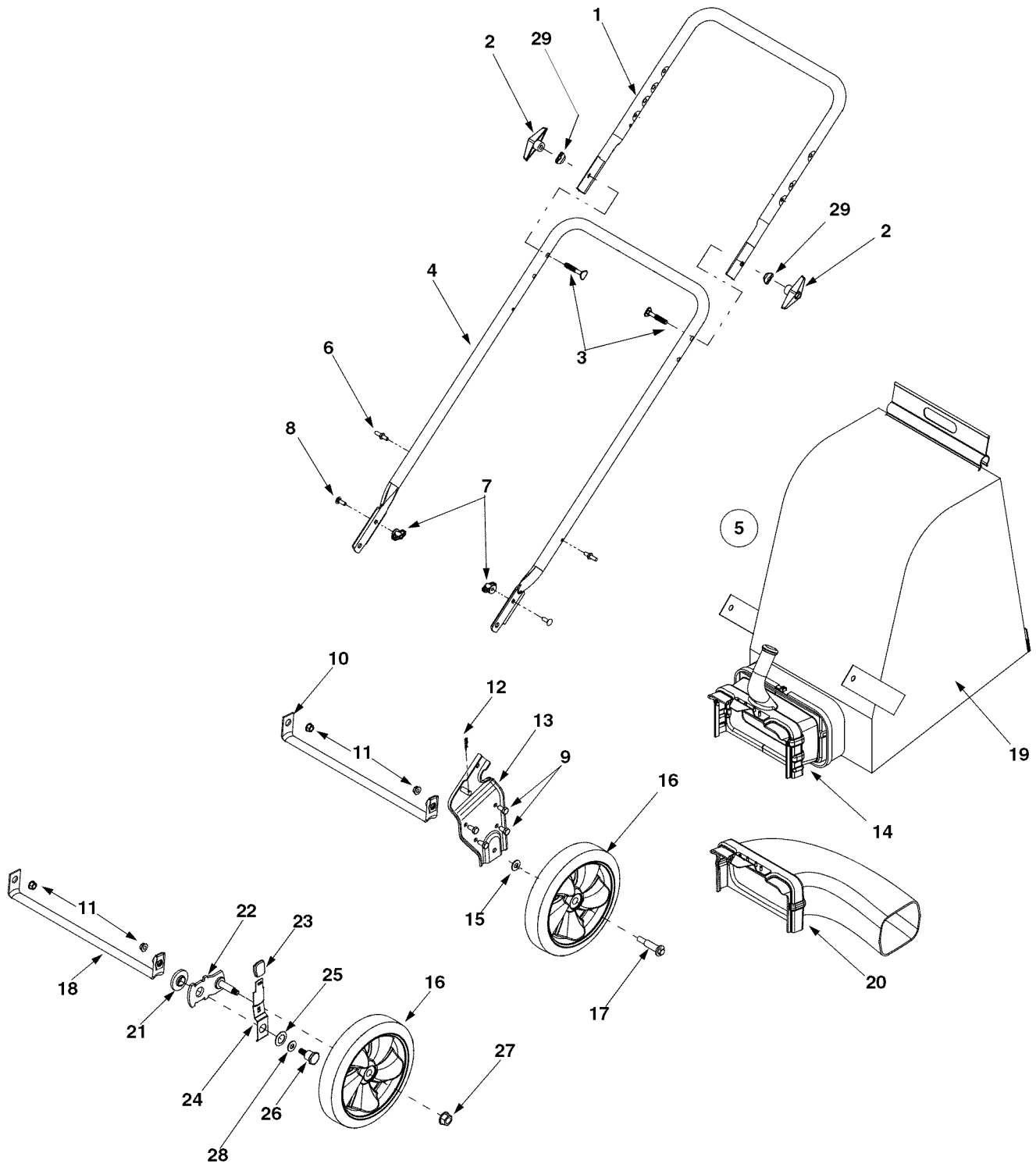
- Clean the equipment thoroughly.
- Wipe equipment with a oiled rag to prevent rust.
- Refer to engine manual for correct engine storage instructions.
- Store unit in a clean, dry area. Do not store next to corrosive materials such as fertilizer.

SECTION 6: TROUBLESHOOTING

Problem	Cause	Remedy
Engine fails to start	<ol style="list-style-type: none"> 1. Spark plug wire disconnected. 2. Fuel tank empty or stale fuel. 3. Throttle control lever (if so equipped) not in correct starting position. 4. Choke, if so equipped, not in CHOKE position. 5. Blocked fuel line. 6. Faulty spark plug. 7. Safety switch not depressed. 	<ol style="list-style-type: none"> 1. Connect wire to spark plug. 2. Fill tank with clean, fresh gasoline. 3. Move throttle lever to FAST position. 4. Move choke to CHOKE position. 5. Clean fuel line. 6. Clean, adjust gap, or replace. 7. Safety switch must be depressed by the front tab on the bag handle when securing the bag.
Engine runs erratic	<ol style="list-style-type: none"> 1. Spark plug wire loose. 2. Unit running on CHOKE. 3. Blocked fuel line or stale fuel. 4. Water or dirt in fuel system. 5. Dirty air cleaner. 6. Carburetor out of adjustment. 	<ol style="list-style-type: none"> 1. Connect and tighten spark plug wire. 2. Move choke lever (if equipped) to OFF position. 3. Clean fuel line; fill tank with clean, fresh gasoline 4. Drain fuel tank. Refill with fresh fuel. 5. Clean or replace air cleaner. 6. See authorized service dealer.
Too much vibration	<ol style="list-style-type: none"> 1. Loose parts or damaged impeller. 	<ol style="list-style-type: none"> 1. See authorized service dealer.
Engine overheats	<ol style="list-style-type: none"> 1. Engine oil level low. 2. Dirty air cleaner. 3. Carburetor not adjusted properly. 	<ol style="list-style-type: none"> 1. Fill crankcase with proper oil. 2. Clean or replace air cleaner. 3. See authorized service dealer.
Occasional skip (hesitates) at high speed	<ol style="list-style-type: none"> 1. Spark plug gap too close. 	<ol style="list-style-type: none"> 1. Adjust gap to .030".
Unit does not discharge	<ol style="list-style-type: none"> 1. Discharge chute clogged. 2. Foreign object lodged in impeller. 3. Low engine RPM 4. Vacuum bag is full. 	<ol style="list-style-type: none"> 1. Stop engine immediately and disconnect spark plug wire. Clean flail screen and inside of discharge opening. 2. Stop engine and disconnect spark plug wire. Remove lodged object. 3. Always run engine at full throttle. 4. Empty bag.
Rate of discharge slows considerably or composition of discharged material changes.	<ol style="list-style-type: none"> 1. Low engine RPM. 2. Chipper blade dull. 	<ol style="list-style-type: none"> 1. Always run engine at full throttle. 2. Replace chipper blade or see your authorized service dealer.

NOTE: For repairs beyond the minor adjustments listed above, contact your nearest authorized service dealer.

SECTION 7: PARTS LIST FOR MODEL SERIES 020

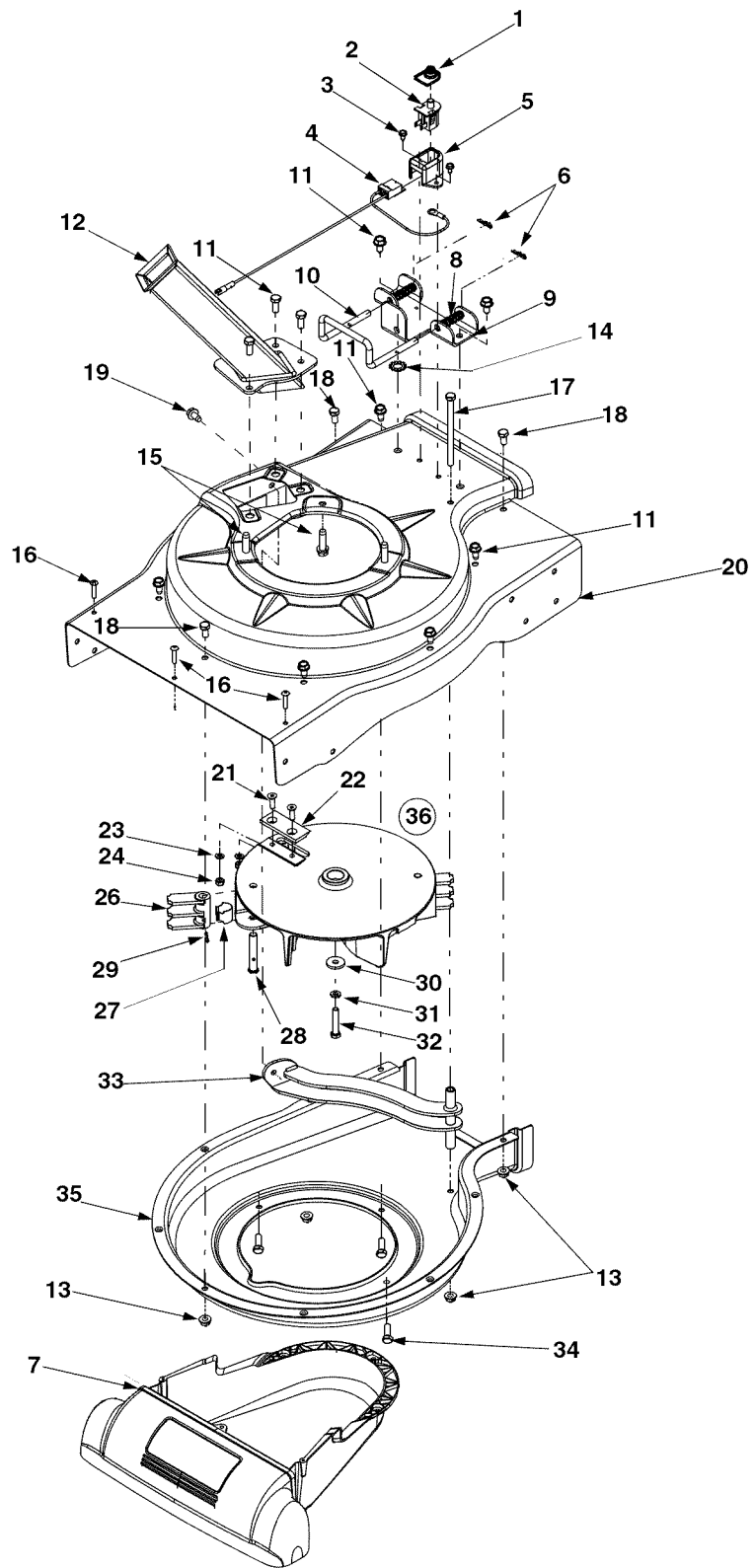


Model Series 020

Ref. No.	Part No.	Part Description
1.	749-04172	Upper Handle
2.	720-0241	Handle Knob 5/16-18
3.	710-1174	Carriage Bolt
4.	749-04165	Lower Handle
5.	664-0095	Bag Assembly
6.	711-1293	Studs
7.	712-0397	Wing Nut 1/4-20
8.	710-0703	Carriage Screw 1/4-20 x.75
9.	710-0726	Hex Cap Screw 5/16-12 x.750
10.	781-04081	Rear Wheel Support Brace
11.	712-04065	Flange Lock Nut, 3/8-16
12.	714-0104	Cotter Pin
13.	681-0155A	Handle Bracket Ass'y LH
	681-0156A	Hndle Brkt Ass'y RH (Not Shown)
14.	631-0083	Chute Assembly
15.	736-0105	Bell Washer.401 ID x.870 OD
16.	734-1987	Wheel 8 x 8.1
17.	738-1015	Shoulder Screw 3/8-16
18.	781-04082	Front Wheel Support Brace
19.	764-0632A	Bag
20.	631-0090†	Blower Chute Ass'y
21.	741-0751	Height Adjustment Bearing
22.	687-02094	Pivot Arm Assembly
23.	720-0426	Height Adjustment Knob
24.	732-1026	Spring Lever
25.	736-0741	Bell Washer.760 ID x.25OD
26.	738-1172	Shoulder Screw,.750 x.500
27.	712-0431	Flange Lock Nut 3/8-16
28.	736-0314	Thrust Washer.375 x.70 x.030
29.	736-0451	Saddle Washer

†If Equipped

Model Series 020



Model Series 020

Ref. No.	Part No.	Part Description
1.	725-1700	Switch Cover
2.	725-3166	Safety Switch
3.	710-0224	Hex Washer Screw #10-16 x.50
4.	629-0920A	Wire Harness
5.	731-1613	Safety Switch Cover
6.	714-0104	Cotter Pin
7.	731-1905A	Nozzle
8.	732-0962	Compression Spring
9.	781-0778A	Switch Mounting Bracket
10.	747-1153	Lock Rod
11.	710-0726	AB Screw 5/16-12 x.75
12.	681-0122	Chipper Chute Assembly
13.	712-04063	Flange Lock Nut, 5/16-18
14.	736-0607	External Lock Washer 5/16
15.	710-0502A	Hex Screw, 3/8-16 x 1.25
16.	710-1220	Screw #12-16 x.750
17.	710-3195	Hex Cap Screw 5/16-18 x 4.5
18.	710-3025	Hex Cap Screw 5/16-18 x.625
19.	710-0607	Screw, 5/16-18 x.500
20.	781-04068	Upper Housing
21.	710-1054	Hex Screw 5/16-24 x 1.0
22.	781-0490	Chipper Blade
23.	736-0119	Lock Washer 5/16
24.	712-0411	Hex Lock Nut 5/16-24
26.	719-0329	Flail
27.	781-0735	Pin Clip
28.	711-1401	Clevis Pin
29.	715-0166	Spiral Pin
30.	736-0247	Flat Washer.375 ID x 1.25 OD
31.	736-0217	Lock Washer 3/8
32.	710-0818	Hex Cap Screw 3/8-24 x 2.0
33.	681-0154	Screen Assembly
34.	710-1650	Shoulder Screw, #12-24
35.	781-0721B	Lower Housing
36.	681-0152	Impeller Assembly (Includes Ref. 21– Ref. 29)
—	723-0400	Safety Glasses (Not Shown)

MANUFACTURER'S LIMITED WARRANTY FOR:



The limited warranty set forth below is given by MTD LLC with respect to new merchandise purchased and used in the United States, its possessions and territories.

“MTD” warrants this product against defects in material and workmanship for a period of two (2) years commencing on the date of original purchase and will, at its option, repair or replace, free of charge, any part found to be defective in materials or workmanship. This limited warranty shall only apply if this product has been operated and maintained in accordance with the Operator’s Manual furnished with the product, and has not been subject to misuse, abuse, commercial use, neglect, accident, improper maintenance, alteration, vandalism, theft, fire, water, or damage because of other peril or natural disaster. Damage resulting from the installation or use of any part, accessory or attachment not approved by MTD for use with the product(s) covered by this manual will void your warranty as to any resulting damage.

Normal wear parts are warranted to be free from defects in material and workmanship for a period of thirty (30) days from the date of purchase. Normal wear parts include, but are not limited to items such as: batteries, belts, blades, blade adapters, grass bags, rider deck wheels, seats, snow thrower skid shoes, shave plates, auger spiral rubber and tires.

HOW TO OBTAIN SERVICE: Warranty service is available, WITH PROOF OF PURCHASE, through your local authorized service dealer. To locate the dealer in your area, check your Yellow Pages, or contact MTD LLC at P.O. Box 361131, Cleveland, Ohio 44136-0019, or call 1-800-800-7310 or 1-330-220-4683 or log on to our Web site at www.mtdproducts.com.

This limited warranty does **not** provide coverage in the following cases:

- a. The engine or component parts thereof. These items may carry a separate manufacturer’s warranty. Refer to applicable manufacturer’s warranty for terms and conditions.
- b. Log splitter pumps, valves, and cylinders have a separate one year warranty.
- c. Routine maintenance items such as lubricants, filters, blade sharpening, tune-ups, brake adjustments, clutch adjustments, deck adjustments, and normal deterioration of the exterior finish due to use or exposure.
- d. Service completed by someone other than an authorized service dealer.

- e. MTD does not extend any warranty for products sold or exported outside of the United States, its possessions and territories, except those sold through MTD’s authorized channels of export distribution.
- f. Replacement parts that are not genuine MTD parts.
- g. Transportation charges and service calls.

No implied warranty, including any implied warranty of merchantability of fitness for a particular purpose, applies after the applicable period of express written warranty above as to the parts as identified. No other express warranty, whether written or oral, except as mentioned above, given by any person or entity, including a dealer or retailer, with respect to any product, shall bind MTD. During the period of the warranty, the exclusive remedy is repair or replacement of the product as set forth above.

The provisions as set forth in this warranty provide the sole and exclusive remedy arising from the sale. MTD shall not be liable for incidental or consequential loss or damage including, without limitation, expenses incurred for substitute or replacement lawn care services or for rental expenses to temporarily replace a warranted product.

Some states do not allow the exclusion or limitation of incidental or consequential damages, or limitations on how long an implied warranty lasts, so the above exclusions or limitations may not apply to you.

In no event shall recovery of any kind be greater than the amount of the purchase price of the product sold. **Alteration of safety features of the product shall void this warranty.** You assume the risk and liability for loss, damage, or injury to you and your property and/or to others and their property arising out of the misuse or inability to use the product.

This limited warranty shall not extend to anyone other than the original purchaser or to the person for whom it was purchased as a gift.

HOW STATE LAW RELATES TO THIS WARRANTY: This limited warranty gives you specific legal rights, and you may also have other rights which vary from state to state.

IMPORTANT: Owner must present Original Proof of Purchase to obtain warranty coverage.

MTD LLC, P.O. BOX 361131 CLEVELAND, OHIO 44136-0019; Phone: 1-800-800-7310, 1-330-220-4683