

# **OWNER'S OPERATING**

## **INSTRUCTIONS**

### **AND PARTS LIST**

**VERTI·CUT<sup>®</sup>**

**Model VC-15**

**STOCK NO. 420**

**SERIES NO. 7700**

**Model VCD-15**

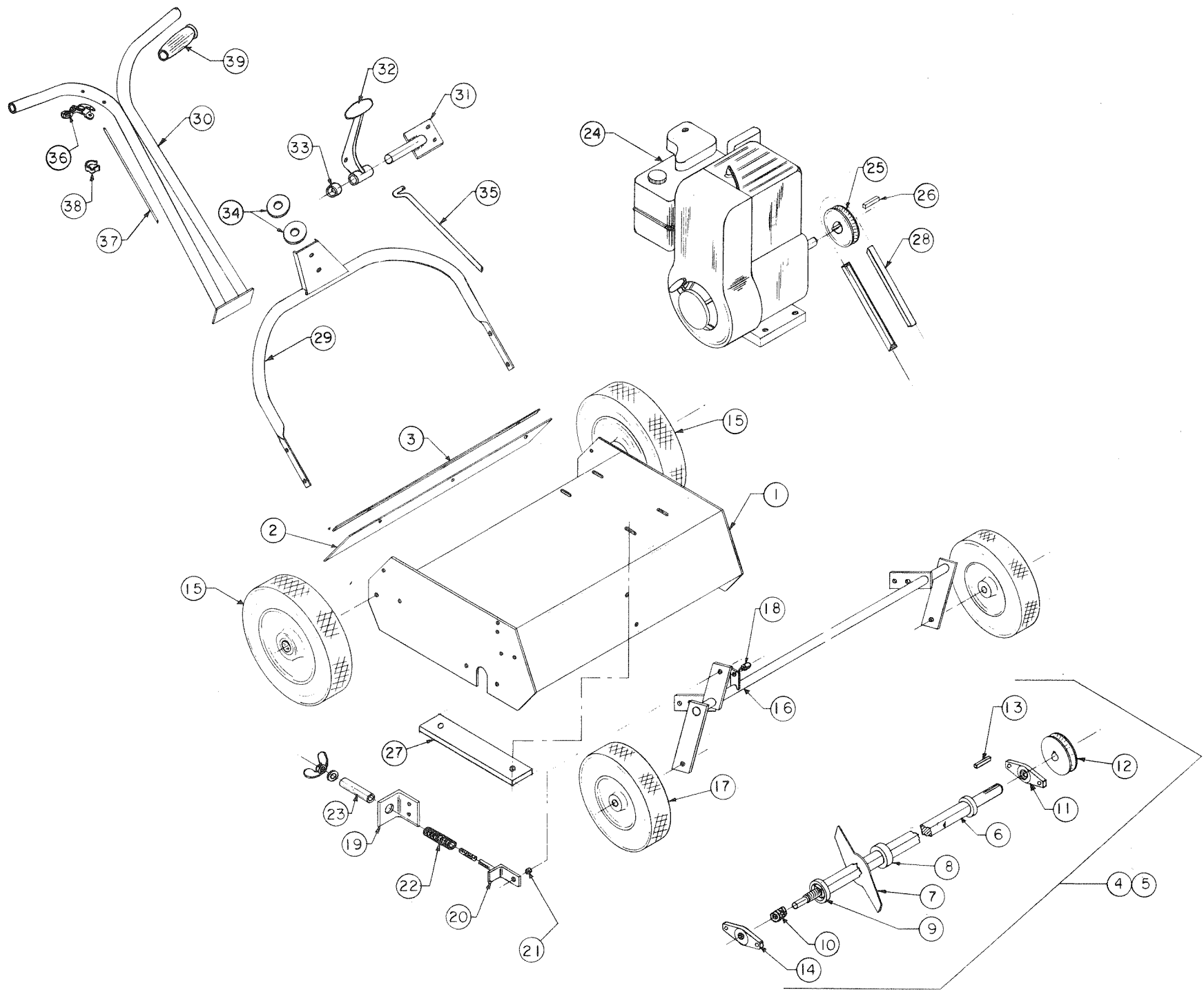
**STOCK NO. 422**

**SERIES NO. 7701**

---

**WEST POINT PRODUCTS CORP.**

**1625 N. GARVIN ST., EVANSVILLE, IND. 47717**



VERTI-CUT  
PARTS LIST

Model VC-15  
Stock No. 420  
Series No.7700

Model VCD-15  
Stock No. 422  
Series No.7701

<u>REF.</u> <u>NO.</u>	<u>NEW</u> <u>PART NO.</u>	<u>DESCRIPTION</u>	<u>QTY.</u>	<u>OLD</u> <u>PART NO.</u>
1	682006	Hood Assembly - Welded -----	1	8305
2	667306	Flapper - Rear -----	1	8317
3	431157	Strip - Backing -----	1	8318
4	492982	Reel Assembly (complete) -----	1	8350
5	492983*	Reel Assembly (complete) -----	1	8360
6	482982	Reel Shaft Assembly -----	1	8355
7	732406	Blade - Cutter -----	8	965
	*	Blade - Cutter -----	27	965
8	436533	Spacer -----	28	9889
	*	Spacer -----	26	
9	721944	Collar -----	1	3762
10	324741	Nut - Special -----	2	3764
11	307254	Bearing - Flange (L.H.) -----	1	948
12	451221	Sheave -----	1	9606
13	314110	Key - Sq. 3/16 -----	1	6003
14	307255	Bearing - Flange (R.H.) -----	1	954
15	484501	Wheel - Rear -----	2	9207
16	482981	Front Suspension Assembly - Welded --	1	8320
17	404636	Wheel -----	2	9516
18	431091	Stud - Adjusting -----	1	739
19	728383	Bracket - Depth Control -----	1	8124
20	481158	Depth Adj. Ass'y. - Welded -----	1	8120
21	436531	Spacer - Bolt -----	1	1007
22	338342	Spring - Depth Adj. -----	1	9625
23	436532	Spacer - Depth Adj. Stud -----	1	8309
24	313011	Engine - 5 H.P. Horiz. B & S -----	1	9614
25	451219	Sheave - Engine -----	1	9605
26	314110	Key - Sq. 3/16 -----	1	6003
27	761402	Bar - Engine Mounting -----	2	8823
28	308459	Belt - V 3V300 -----	1	9607
29	682328	Handle Bow Tube Ass'y.-Lower -----	1	3685
30	682327	Handle Assembly - Upper -----	1	3670
31	482983	Transport Handle Shaft Assembly -----	1	8325
32	561459	Lever - Control -----	1	9637
33	721943	Collar - Clutch Handle -----	1	9638
34	356303	Washer -----	2	
35	522930	Rod - Clutch -----	1	8316
36	389048	Control Lever -----	1	9072
37	389032	Throttle Cable Complete -----	1	9461
38	359015	Conduit Clip -----	1	9896
39	362424	Handle Grip -----	2	

\* VCD-15 Model only.

VERTI-CUT  
MODELS VC-15 & VCD-15  
ASSEMBLY and OPERATING INSTRUCTIONS

ASSEMBLY

1. The unit is shipped less upper handle and throttle control assembled. Attach upper handle (with throttle lever holes on right hand side) using fasteners to hold control lever assembly during shipment. Tighten fasteners.
2. Mount throttle cable and control lever on right hand handle with fasteners provided.

OPERATION

1. The control handle mounted to the lower handle assembly when pulled back and down allows the unit for transport position. When it is thrown forward, the machine is in working position.
2. Depth control of the unit is provided by loosening or tightening the wing nut located on the right hand side of the main chassis.
3. Before attempting to operate the unit, place it on a flat surface and make certain the tips of the blades clear a flat surface by at least 1/2" when the control lever is in the forward working position.
4. The cutting reel is coupled directly to the engine by a V-belt and starts rotating when the engine is started. Therefore, the unit must be in transport position when starting engine.
5. Refer to engine operating and maintenance manual provided with the engine for proper engine starting.

SERVICE & MAINTENANCE

1. Proper engine operating and maintenance instructions have been provided with this unit by the engine manufacturer. It is important to read and maintain this manual. Engine difficulty, if any, should be reported to an authorized engine manufacturer's service center. Warranty on this engine and engine accessories is provided by the engine manufacturer.
2. CUTTING REEL ADJ. With engine stopped and control handle forward, set depth adjustment so that blades are just tipping the grass plants. The depth adjustment is spring loaded and will lock in this position until changed by the operator. After the machine is running, increase speed by throttle control on handle. Tip front of machine up and throw control handle forward. LOWER FRONT OF MACHINE AND PUSH FORWARD MAKING A TRIAL RUN. If sufficient grass and thatch material is not being removed, set the blade a little deeper. Repeat this process until the desired amount of material is being removed.
3. CUTTING REEL REMOVAL. Slip V-belt off of sheave. Remove complete reel assembly by removing fasteners at reel bearings. If individual blades are being replaced, remove bearings and jam nuts. Blades and spacers will slip off. When replacing blades, always start assembly with a blade, then spacer(s) rotating each blade 90° to each other. Reel Assembly #492982 requires four (4) spacers between each blade.
4. DRIVE BELT ADJUSTMENT. Due to normal "wear in" the belt may start to slip under load. To correct this, loosen engine mounting bolts and slide engine toward rear of unit.