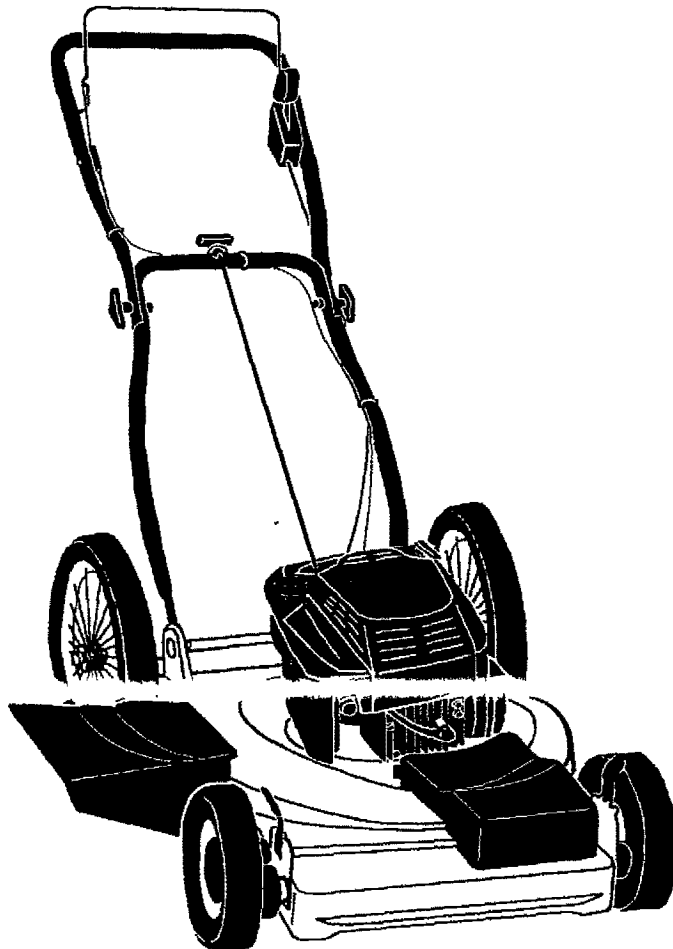


**SEARS**

# **CRAFTSMAN<sup>®</sup>**

**MODEL NUMBER 917.378590 OWNER'S MANUAL**



- **Assembly**
- **Operation**
- **Customer Responsibilities**
- **Service Adjustments**
- **Repair Parts**

**Caution:**  
**Read and Follow**  
**all Safety Rules**  
**and Instructions**  
**Before Operating**  
**This Equipment**

Sears, Roebuck and Co., Hoffman Estates, IL 60179 U.S.A.

# SAFETY RULES



**CAUTION: ALWAYS DISCONNECT SPARK PLUG WIRE AND PLACE WIRE WHERE IT CANNOT CONTACT SPARK PLUG TO PREVENT ACCIDENTAL STARTING WHEN SETTING UP, TRANSPORTING, ADJUSTING OR MAKING REPAIRS.**



## IMPORTANT

**SAFETY STANDARDS REQUIRE OPERATOR PRESENCE CONTROLS TO MINIMIZE THE RISK OF INJURY. YOUR UNIT IS EQUIPPED WITH SUCH CONTROLS. DO NOT ATTEMPT TO DEFEAT THE FUNCTION OF THE OPERATOR PRESENCE CONTROLS UNDER ANY CIRCUMSTANCES.**

### TRAINING:

- Read this operator's manual carefully. Become familiar with the controls and know how to operate your mower properly. Learn how to quickly stop mower.
- Do not allow children to use your mower. Never allow adults to use mower without proper instructions.
- Keep the area of operation clear of all persons, especially small children and pets.
- Use mower only as the manufacturer intended and as described in this manual.
- Do not operate mower if it has been dropped or damaged in any manner. Always have damage repaired before using your mower.
- Do not use accessory attachments that are not recommended by the manufacturer. Use of such attachments may be hazardous.
- The blade turns when the engine is running.
- Always stop the engine whenever you leave or are not using your mower, or before crossing driveways, walks, roads, and any gravel-covered areas.
- Never direct discharge of material toward bystanders nor allow anyone near the mower while you are operating it.
- Before cleaning, inspecting, or repairing your mower, stop the engine and make absolutely sure the blade and all moving parts have stopped. Then disconnect the spark plug wire and keep it away from the spark plug to prevent accidental starting.
- Do not continue to run your mower if you hit a foreign object. Follow the procedure outlined above, then repair any damage before restarting and operating you mower.
- Do not change the governor settings or overspeed the engine. Engine damage or personal injury may result.
- Do not operate your mower if it vibrates abnormally. Excessive vibration is an indication of damage; stop the engine, safely check for the cause of vibration and repair as required.
- Do not run the engine indoors. Exhaust fumes are dangerous.
- Never cut grass by pulling the mower towards you. Mow across the face of slopes, never up and down or you might lose your footing. Do not mow excessively steep slopes. Use caution when operating the mower on uneven terrain or when changing directions - maintain good footing.
- Never operate your mower without proper guards, plates, grass catcher or other safety devices in place.

### PREPARATION:

- Always thoroughly check the area to be mowed and clear it of all stones, sticks, wires, bones, and other foreign objects. These objects will be thrown by the blade and can cause severe injury.
- Always wear safety glasses or eye shields when starting and while using your mower.
- Dress properly. Do not operate mower when barefoot or wearing open sandals. Wear only solid shoes with good traction when mowing.
- Check fuel tank before starting engine. Do not fill gas tank (accidentally) when the engine is running or when the engine is hot. Allow the engine to cool for several minutes before filling the gas tank. Clean off any spilled gasoline before starting the engine.
- Always make wheel height adjustments before starting your mower. Never attempt to do this while the engine is running.
- Mow only in daylight or good artificial light.

### OPERATION:

- Keep your eyes and mind on your mower and the area being cut. Do not let other interests distract you.
- Do not mow wet or slippery grass. Never run while operating your mower. Always be sure of your footing - keep a firm hold on the handles and walk.
- Do not put hands or feet near or under rotating parts. Keep clear of the discharge opening at all times.
- Check the blade and the engine mounting bolts often to be sure they are tightened properly.
- Check all bolts, nuts and screws at frequent intervals for proper tightness to be sure mower is in safe working condition.
- Keep all safety devices in place and working.
- To reduce fire hazard, keep the engine free of grass, leaves or excessive grease and oil.
- Check grass catcher often for deterioration and wear and replace worn bags. Use only replacement bags that are recommended by and comply with specifications of the manufacturer of your mower.
- Always keep a sharp blade on your mower.
- Allow engine to cool before storing in any enclosure.
- Never store mower with fuel in the tank inside a building where fumes may reach an open flame or an ignition source such as a hot water heater, space heater, clothes dryer, etc.

### MAINTENANCE AND STORAGE:



**LOOK FOR THIS SYMBOL TO POINT OUT IMPORTANT SAFETY PRECAUTIONS. IT MEANS - ATTENTION!!! BECOME ALERT!!! YOUR SAFETY IS INVOLVED.**

**CONGRATULATIONS** on your purchase of a Sears Lawn Mower. It has been designed, engineered and manufactured to give you the best possible dependability and performance.

Should you experience any problem you cannot easily remedy, please contact your nearest Sears Authorized Service Center/Department. We have competent, well-trained technicians and the proper tools to service or repair this lawn mower.

Please read and retain this manual. The instructions will enable you to assemble and maintain your lawn mower properly. Always observe the "SAFETY RULES".

MODEL NUMBER	917.378590
SERIAL NUMBER	_____
DATE OF PURCHASE	_____
THE MODEL AND SERIAL NUMBERS WILL BE FOUND ON A DECAL ATTACHED TO THE REAR OF THE LAWN MOWER HOUSING	
YOU SHOULD RECORD BOTH SERIAL NUMBER AND DATE OF PURCHASE AND KEEP IN A SAFE PLACE FOR FUTURE REFERENCE.	

## PRODUCT SPECIFICATIONS

HORSEPOWER:	5.5
DISPLACEMENT:	9.0 CU. IN.
GASOLINE CAPACITY AND TYPE:	1.6 QUARTS UNLEADED REGULAR
OIL TYPE (API-SG):	SAE 30 (ABOVE 32°F) SAE 5W-30 (below 32°F)
OIL CAPACITY:	20 OZS.
SPARK PLUG: (GAP: .030")	CHAMPION RJ19-LM STD361458
VALVE CLEARANCE:	INTAKE: .008" EXHAUST: .008"
SOLID STATE IGNITION AIR GAP:	.0125 IN.
BLADE BOLT TORQUE:	35-40 FT. LBS.

## MAINTENANCE AGREEMENT

A Sears Maintenance Agreement is available on this product. Contact your nearest Sears store for details.

## CUSTOMER RESPONSIBILITIES

- Read and observe the safety rules.
- Follow a regular schedule in maintaining, caring for and using your lawn mower.
- Follow the instructions under "Customer Responsibilities" and "Storage" sections of this owner's manual.

## LIMITED TWO YEAR WARRANTY ON CRAFTSMAN POWER MOWER

For two years from date of purchase, when this Craftsman Lawn Mower is maintained, lubricated, and tuned up according to the operating and maintenance instructions in the owner's manual, Sears will repair free of charge any defect in material or workmanship.

If this Craftsman Lawn Mower is used for commercial or rental purposes, this warranty applies for only 90 days from the date of purchase.

This Warranty does not cover:

- Expendable items which become worn during normal use, such as rotary mower blades, blade adapters, belts, air cleaners and spark plug.
- Repairs necessary because of operator abuse or negligence, including bent crankshafts and the failure to maintain the equipment according to the instructions contained in the owner's manual.

WARRANTY SERVICE IS AVAILABLE BY RETURNING THE CRAFTSMAN POWER MOWER TO THE NEAREST SEARS SERVICE CENTER/DEPARTMENT IN THE UNITED STATES. THIS WARRANTY APPLIES ONLY WHILE THIS PRODUCT IS IN USE IN THE UNITED STATES.

This Warranty gives you specific legal rights, and you may also have other rights which vary from state to state.

SEARS, ROEBUCK AND CO., D/817 WA, HOFFMAN ESTATES, ILLINOIS 60179

# TABLE OF CONTENTS

SAFETY RULES .....	2	MAINTENANCE SCHEDULE .....	9
PRODUCT SPECIFICATIONS .....	3	SERVICE AND ADJUSTMENTS .....	12
CUSTOMER RESPONSIBILITIES .....	3, 9-11	STORAGE .....	15
WARRANTY .....	3	TROUBLESHOOTING .....	27
ASSEMBLY .....	5	REPAIR PARTS - LAWN MOWER .....	16-20
OPERATION .....	6	REPAIR PARTS - ENGINE .....	21-26
		PARTS ORDERING/SERVICE .....	BACK COVER

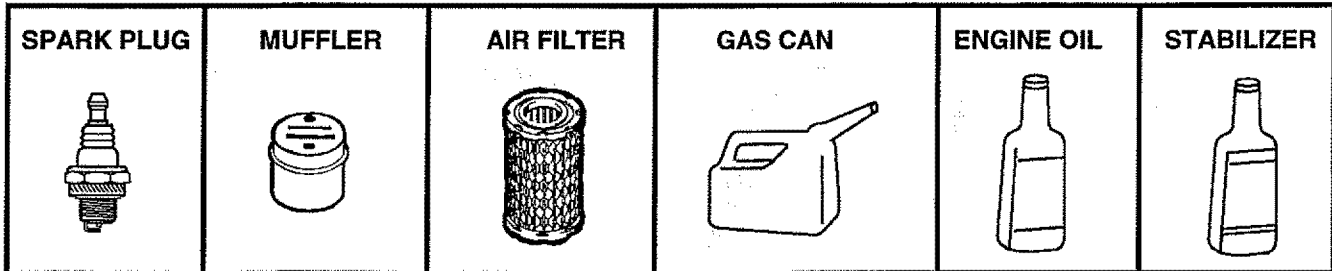
## INDEX

<p style="text-align: center;"><b>A</b></p> <p>Accessories ..... 5</p> <p>Adjustments:</p> <p style="padding-left: 20px;">Carburetor ..... 14</p> <p style="padding-left: 20px;">Drive Control Cable ..... 12</p> <p style="padding-left: 20px;">Engine Speed ..... 14</p> <p style="padding-left: 20px;">Handle Height ..... 13</p> <p style="padding-left: 20px;">Height of Cut ..... 7</p> <p>Air Filter:</p> <p style="padding-left: 20px;">Replacement ..... 11</p> <p style="padding-left: 20px;">Service ..... 11</p> <p>Assembly ..... 5</p> <p style="text-align: center;"><b>B</b></p> <p>Blade:</p> <p style="padding-left: 20px;">Sharpening ..... 10</p> <p style="padding-left: 20px;">Replacement ..... 10</p> <p style="text-align: center;"><b>C</b></p> <p>Controls:</p> <p style="padding-left: 20px;">Drive Control ..... 6</p> <p style="padding-left: 20px;">Engine Zone Control ..... 6</p> <p style="padding-left: 20px;">Engine Speed Control ..... 6</p> <p style="padding-left: 20px;">Operator Presence Control Bar ..... 6</p> <p>Customer Responsibilities ..... 3, 9-11</p> <p style="padding-left: 20px;">Air Filter ..... 11</p> <p style="padding-left: 20px;">Blade Care/Replacement ..... 10</p> <p style="padding-left: 20px;">Drive Wheels ..... 10</p> <p style="padding-left: 20px;">Engine ..... 11</p> <p style="padding-left: 20px;">Lubrication ..... 11</p> <p style="padding-left: 20px;">Spark Plug ..... 11</p> <p>Cutting Levels ..... 7</p>	<p style="text-align: center;"><b>E</b></p> <p>Engine:</p> <p style="padding-left: 20px;">Air Filter ..... 11</p> <p style="padding-left: 20px;">Oil Change ..... 12</p> <p style="padding-left: 20px;">Oil Level ..... 12</p> <p style="padding-left: 20px;">Oil Type ..... 12</p> <p style="padding-left: 20px;">Starting ..... 8</p> <p style="padding-left: 20px;">Stopping ..... 8</p> <p style="padding-left: 20px;">Storage ..... 15</p> <p style="text-align: center;"><b>F</b></p> <p>Fuel:</p> <p style="padding-left: 20px;">Capacity ..... 3</p> <p style="padding-left: 20px;">Storage ..... 15</p> <p style="padding-left: 20px;">Type ..... 8</p> <p style="text-align: center;"><b>H</b></p> <p>Handle Adjustment:</p> <p style="padding-left: 20px;">Assembly ..... 5</p> <p style="padding-left: 20px;">Cutting Height ..... 7</p> <p style="text-align: center;"><b>L</b></p> <p>Lubrication:</p> <p style="padding-left: 20px;">Engine ..... 11</p> <p style="padding-left: 20px;">Lawn Mower ..... 9</p> <p style="text-align: center;"><b>M</b></p> <p>Maintenance Agreement ..... 3</p> <p>Maintenance Schedule ..... 9</p> <p>Mowing Tips ..... 8</p> <p style="text-align: center;"><b>O</b></p> <p>Oil:</p> <p style="padding-left: 20px;">Engine ..... 11</p> <p style="padding-left: 20px;">Storage ..... 15</p>	<p>Operation:</p> <p style="padding-left: 20px;">Drive Control ..... 7</p> <p style="padding-left: 20px;">Engine Control ..... 7</p> <p style="padding-left: 20px;">Grass Catcher ..... 10</p> <p style="padding-left: 20px;">Mower ..... 7</p> <p style="padding-left: 20px;">Operator Presence Control Bar ..... 7</p> <p>Options:</p> <p style="padding-left: 20px;">Accessories ..... 5</p> <p style="text-align: center;"><b>R</b></p> <p>Repair Parts:</p> <p style="padding-left: 20px;">Engine ..... 21-26</p> <p style="padding-left: 20px;">Lawn Mower ..... 16-20</p> <p>Responsibilities, Customer ..... 3, 9-11</p> <p style="text-align: center;"><b>S</b></p> <p>Safety Rules ..... 2</p> <p>Service and Adjustments ..... 12</p> <p style="padding-left: 20px;">Carburetor ..... 14</p> <p style="padding-left: 20px;">Discharge Guard ..... 12</p> <p style="padding-left: 20px;">Drive Belt ..... 12</p> <p style="padding-left: 20px;">Engine Speed ..... 14</p> <p style="padding-left: 20px;">Handle ..... 13</p> <p>Spark Plug ..... 11</p> <p>Specifications ..... 3</p> <p>Speed Control:</p> <p style="padding-left: 20px;">Engine ..... 14</p> <p>Starting the Engine ..... 8</p> <p>Stopping the Engine ..... 8</p> <p>Storage ..... 15</p> <p style="text-align: center;"><b>T</b></p> <p>Trouble Shooting Chart ..... 27</p> <p style="text-align: center;"><b>W</b></p> <p>Warranty ..... 3</p>
---	--	---

# LAWN MOWER ACCESSORIES

These accessories were available when this lawn mower was produced. They are also available at most Sears retail outlets and service centers. Most Sears stores can also order repair parts for you, when you provide the model number of your lawn mower. Some of these accessories may not apply to your lawn mower.

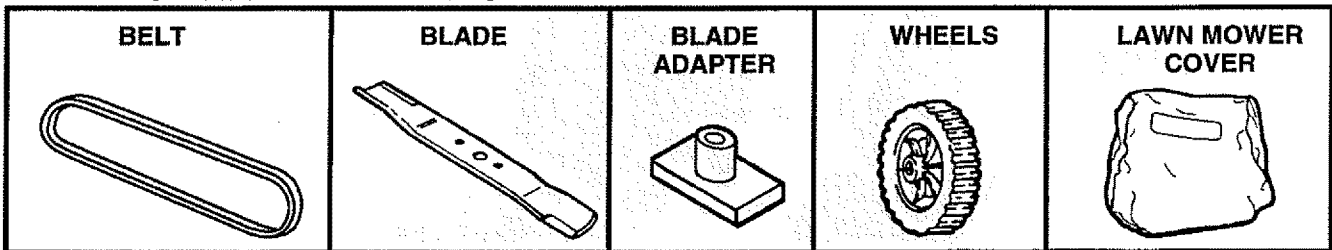
## ENGINE



## LAWN MOWER PERFORMANCE



## LAWN MOWER MAINTENANCE



# ASSEMBLY

Read these instructions and this manual in its entirety before you attempt to assemble or operate your new lawn mower. Your new lawn mower has been assembled at the factory with the exception of those parts left unassembled for shipping purposes. To ensure safe and proper operation of your lawn mower, all parts and hardware you assemble must be tightened securely. Use the correct tools as necessary to ensure proper tightness. All parts such as nuts, washers, bolts, etc., necessary to complete the assembly have been placed in the parts bag.

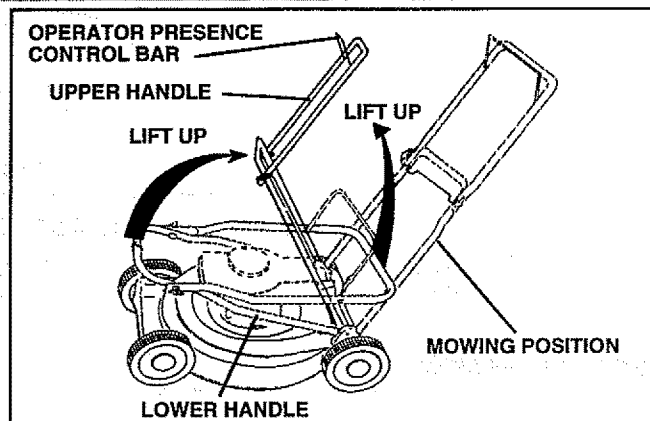
## TO REMOVE LAWN MOWER FROM CARTON

- Remove loose parts included with mower.
- Cut down two end corners of carton and lay end panel down flat.
- Remove all packing materials except padding between upper and lower handle and padding holding operator presence control bar to upper handle.
- Roll lawn mower out of carton and check carton thoroughly for additional loose parts.

## HOW TO SET UP YOUR LAWN MOWER

### TO UNFOLD HANDLE (See Fig. 1)

**IMPORTANT:** UNFOLD HANDLE CAREFULLY SO AS NOT TO PINCH OR DAMAGE CONTROL CABLES.



**FIG. 1**

- Raise handles until lower handle section locks into place in mowing position.
- Raise upper handle section into place on lower handle, remove protective padding and tighten both handle knobs.
- Remove handle padding holding operator presence control bar to upper handle.
- Your lawn mower handle can be adjusted for your mowing comfort. Refer to "Adjust Handle" in the Service and Adjustments section of this manual.

---

# OPERATION

---

## KNOW YOUR LAWN MOWER

READ THIS OWNER'S MANUAL AND SAFETY RULES BEFORE OPERATING YOUR LAWN MOWER. Compare the illustrations with your lawn mower to familiarize yourself with the location of various controls and adjustments. Save this manual for future reference.

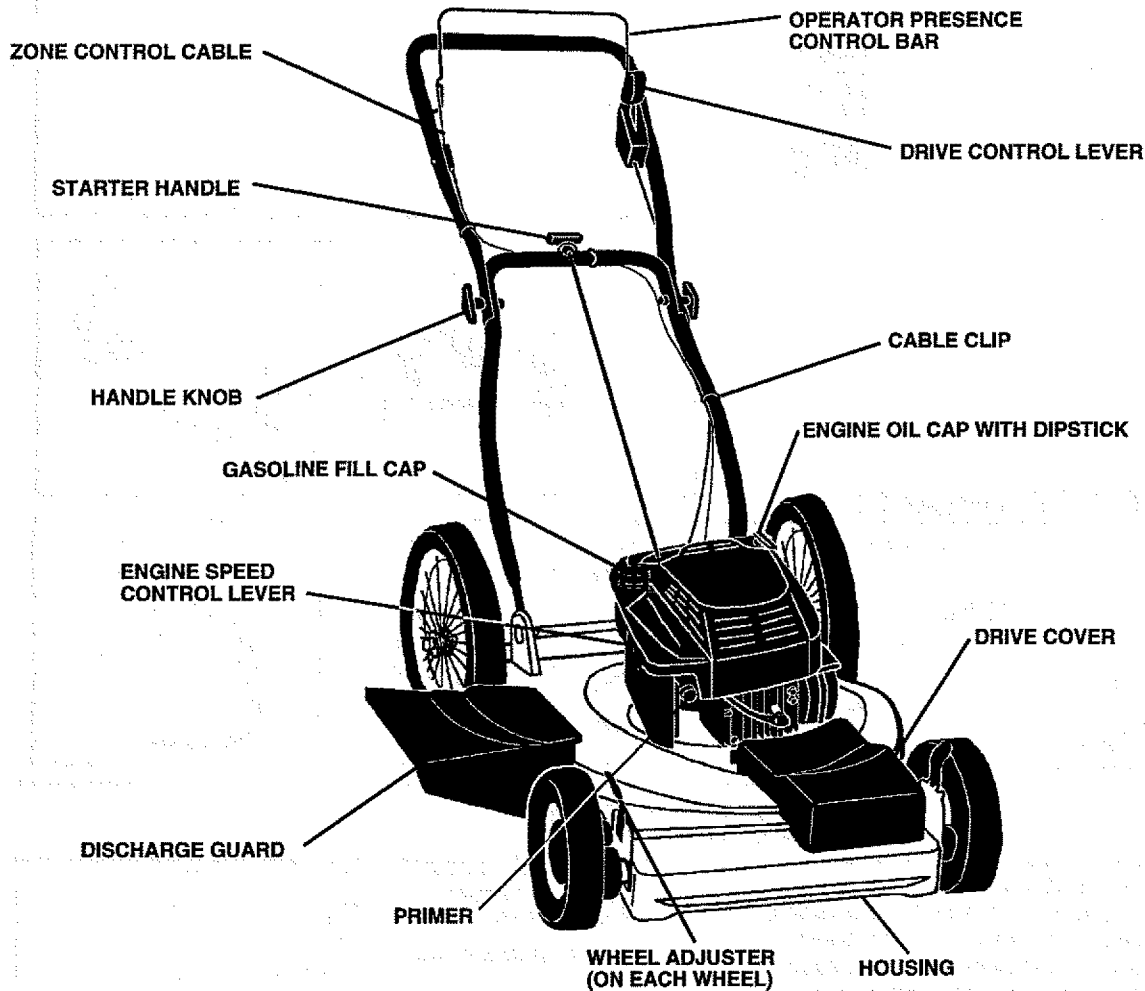


FIG. 2

---

### MEETS CPSC SAFETY REQUIREMENTS

Sears rotary walk-behind power lawn mowers conform to the safety standards of the American National Standards Institute and the U.S. Consumer Product Safety Commission. The blade turns when the engine is running.

**OPERATOR PRESENCE CONTROL** - must be held down to the handle to start the engine. Release to stop the engine.

**STARTER HANDLE** - used for starting the engine.

**DRIVE CONTROL LEVER** - used to engage power-propelled forward motion of lawn mower.

**PRIMER** - pumps additional fuel from the carburetor to the cylinder for use when starting a cold engine.

**ENGINE SPEED CONTROL LEVER** - located on the side of the engine which allows you to select either fast (🔝) or slow (🔞) engine speed.

# OPERATION

## HOW TO USE YOUR LAWN MOWER

### ENGINE SPEED (See Fig. 3)

The engine speed is controlled by a lever located on the side of the engine. Fast (⚡) position is for starting engine, normal cutting and better grass bagging. Slow (🐢) position is for light cutting, trimming and fuel economy.

### ENGINE ZONE CONTROL



**CAUTION:** Federal regulations require an engine control to be installed on this lawn mower in order to minimize the risk of blade contact injury. Do not under any circumstances attempt to defeat the function of the operator control. The blade turns when the engine is running.

- Your lawn mower is equipped with an operator presence control bar which requires the operator to be positioned behind the lawn mower handle to start and operate the lawn mower.

### DRIVE CONTROL (See Fig. 4)

- Self-propelling is controlled by holding the operator presence control bar down to the handle and pushing the drive control lever forward until it clicks; then release the lever.
- Forward motion will stop when the operator presence control bar is released. To stop forward motion without stopping engine, release the operator presence control bar slightly until the drive control disengages. Hold operator presence control bar down to handle to continue mowing without self-propelling.
- To keep drive control engaged when turning corners, push down on handle and lift front wheels off ground while turning lawn mower.

### TO ADJUST CUTTING HEIGHT (See Fig. 5)

- Raise wheels for low cut and lower wheels for high cut.
- Wheels are set in low cut for shipping. Adjust cutting height to suit your requirements. Medium position is best for most lawns.
- To change cutting height, squeeze adjuster lever toward wheel. Move wheel up or down to suit your requirements. Be sure all wheels are in the same setting.

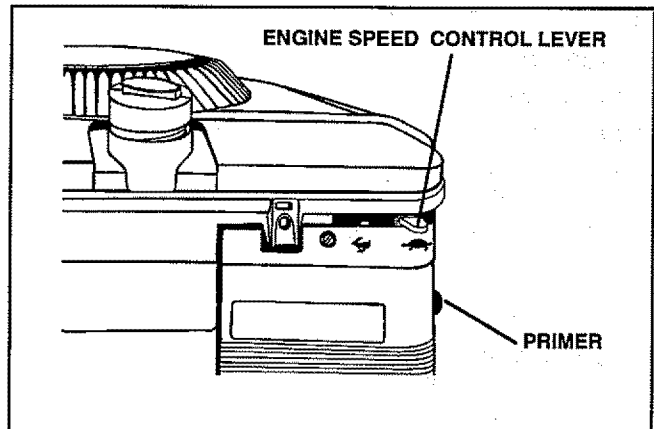


FIG. 3

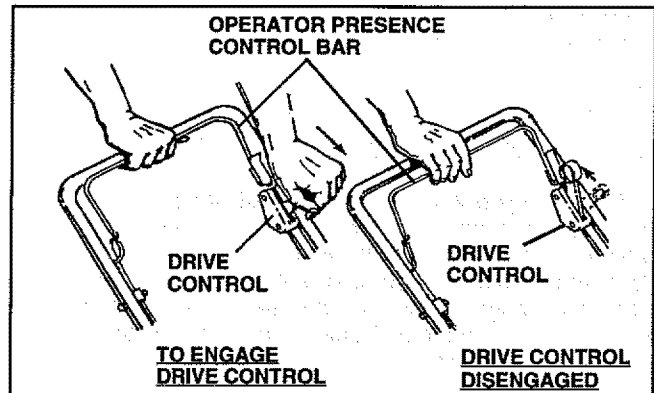


FIG. 4

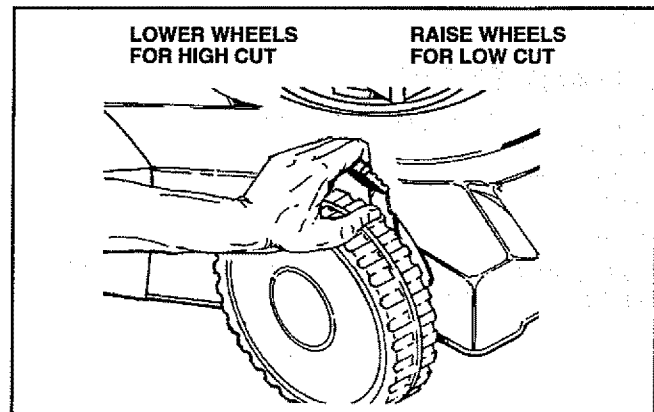


FIG. 5

# OPERATION

## BEFORE STARTING ENGINE

### OIL (See Fig. 6)

Your lawn mower is shipped without oil in the engine.

- Be sure mower is level and area around oil fill is clean.
- Remove engine oil cap w/dipstick and fill to the full line on the dipstick.
- Use 20 ozs. of oil. For type and grade of oil to use, see "ENGINE" in Customer Responsibilities section of this manual.
- Pour oil slowly. Do not over fill.
- Check oil level before each use. Add oil if needed. Fill to full line on dipstick.
- To read proper level, tighten engine oil cap each time.
- Reinstall engine oil cap and tighten.
- After the first two (2) hours of mowing, change the oil, and every 25 hours thereafter. You may need to change the oil more often under dusty, dirty conditions.

### GAS (See Fig. 6)

- Fill gasoline tank with fresh, clean, unleaded gasoline. **DO NOT USE PREMIUM GASOLINE. BE CAREFUL NOT TO OVER FILL TANK.**

**WARNING:** Experience indicates that alcohol blended fuels (called gasohol or using ethanol or methanol) can attract moisture which leads to separation and formation of acids during storage. Acidic gas can damage the fuel system of an engine while in storage. To avoid engine problems, the fuel system should be emptied before storage of 30 days or longer. Drain the fuel tank, start the engine and let it run until fuel lines and carburetor are empty. Use fresh fuel next season. See Storage Instructions for additional information. Never use engine or carburetor cleaner products in fuel tank or permanent damage may occur.

## TO START ENGINE

- To start a cold engine, push primer three (3) times before trying to start. Use a firm push. This step is not usually necessary when starting an engine which has already run for a few minutes.
- Push engine speed control lever to fast (⚡) position.
- Hold operator presence control bar down to the handle and pull starter handle quickly. **DO NOT** allow starter rope to snap back.
- To **STOP** engine, release operator presence control bar.

**NOTE:** In cooler weather it may be necessary to repeat priming steps. In warmer weather over priming may cause flooding and engine will not start. If you do flood engine, wait a few minutes before attempting to start and **DO NOT** repeat priming steps.

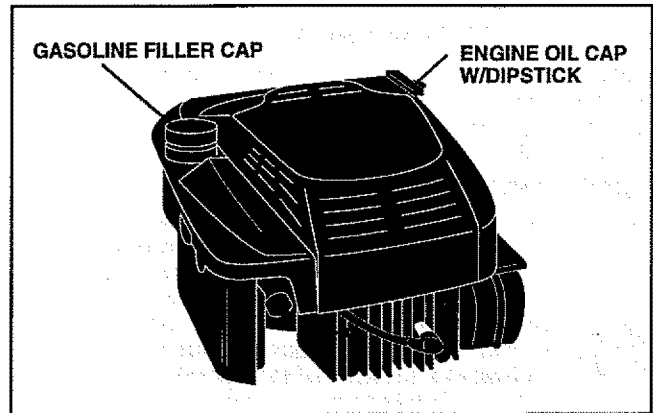


FIG. 6

## MOWING TIPS

- Under certain conditions, such as very tall grass, it may be necessary to raise the height of cut to reduce pushing effort and to keep from overloading the engine and leaving clumps of grass clippings.
- For extremely heavy cutting, reduce the width of cut by overlapping previously cut path and mow slowly.
- For better grass bagging and most cutting conditions, the engine speed should be set in the fast (⚡) position.
- For side discharge lawn mowers, cutting in a counter-clockwise direction, starting at the outside of the area to be cut, spreads grass clippings more evenly and puts less load on the engine. To keep clippings off of walkways, flower beds, etc., make the first cuts in a clockwise direction.
- Pores in cloth grass catchers can become filled with dirt and dust with use and catchers will collect less grass. To prevent this, regularly hose catcher off with water and let dry before using.
- Keep top of engine around starter clear and clean of grass clippings and chaff. This will help engine air flow and extend engine life.



# CUSTOMER RESPONSIBILITIES

MAINTENANCE SCHEDULE		SERVICE DATES													
		BEFORE EACH USE	AFTER EACH USE	FIRST 2 HOURS	EVERY 5 HOURS	EVERY 25 HOURS	EVERY SEASON	BEFORE STORAGE							
<b>MOWER</b>	Check for Loose Fasteners	✓						✓							
	Clean/Inspect Grass Catcher (If Equipped)	✓	✓						✓						
	Clean Lawn Mower		✓						✓						
	Inspect/Clean Drive Wheels (Self-Propelled Mowers)	✓			✓										
	Sharpen/Replace Mower Blade					✓ <sup>3</sup>									
	Lubrication Chart					✓ <sup>3</sup>			✓						
	Clean Battery/Recharge (Electric Start Mowers)					✓			✓ <sup>4</sup>						
<b>ENGINE</b>	Check Engine Oil Level	✓		✓											
	Change Engine Oil		✓		✓ <sup>1,2</sup>										
	Clean Air Filter				✓ <sup>2</sup>										
	Inspect Muffler				✓										
	Replace Spark Plug							✓							
	Replace Air Filter Paper Cartridge							✓ <sup>2</sup>							

- 1 - Change more often when operating under a heavy load or in high ambient temperatures.
- 2 - Service more often when operating in dirty or dusty conditions.
- 3 - Replace blades more often when mowing in sandy soil.
- 4 - Charge 48 hours at end of season.

## GENERAL RECOMMENDATIONS

The warranty on this lawn mower does not cover items that have been subjected to operator abuse or negligence. To receive full value from the warranty, operator must maintain mower as instructed in this manual.

Some adjustments will need to be made periodically to properly maintain your unit.

All adjustments in the Service and Adjustments section of this manual should be checked at least once each season.

- Once a year, replace the spark plug, clean or replace air filter element and check blade for wear. A new spark plug and clean/new air filter element assures proper air-fuel mixture and helps your engine run better and last longer.

- Follow the maintenance schedule in this manual.

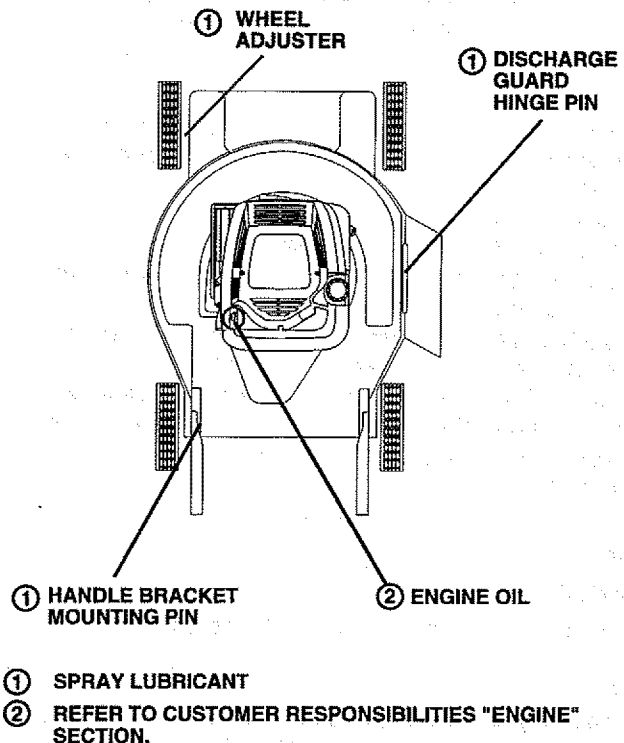
### BEFORE EACH USE

- Check engine oil level.
- Check for loose fasteners.

### LUBRICATION

Keep unit well lubricated (See "LUBRICATION CHART").

## LUBRICATION CHART



**IMPORTANT: DO NOT OIL OR GREASE PLASTIC WHEEL BEARINGS. VISCOUS LUBRICANTS WILL ATTRACT DUST AND DIRT THAT WILL SHORTEN THE LIFE OF THE SELF-LUBRICATING BEARINGS. IF YOU FEEL THEY MUST BE LUBRICATED, USE ONLY A DRY, POWERED GRAPHITE TYPE LUBRICANT SPARINGLY.**

# CUSTOMER RESPONSIBILITIES

## LAWN MOWER

Always observe safety rules when performing any maintenance.

### TIRES

- Keep tires free of gasoline, oil, or insect control chemicals which can harm rubber.
- Avoid stumps, stones, deep ruts, sharp objects and other hazards that may cause tire damage.

### BLADE CARE

For best results, mower blade must be kept sharp. Replace bent or damaged blades.

#### TO REMOVE BLADE (See Fig. 7)

- Disconnect spark plug wire from spark plug and place wire where it cannot come in contact with spark plug.
- Turn lawn mower on its side. Make sure air filter and carburetor are up.
- Use a wood block between blade and mower housing to prevent blade from turning when removing blade bolt.
- Protect your hands with gloves and/or wrap blade with heavy cloth.
- Remove blade bolt by turning counter-clockwise. Use a 9/16" box or open-end wrench.
- Remove blade and attaching hardware (bolt, lock washer and hardened washer).

**NOTE:** Remove the blade adapter and check the key inside hub of blade adapter. The key must be in good condition to work properly. Replace adapter if damaged.

#### TO REPLACE BLADE (See Fig. 7)

- Position the blade adapter on the engine crankshaft. Be sure key in adapter and crankshaft keyway are aligned.
- Position blade on the blade adapter aligning the two (2) holes in the blade with the raised lugs on the adapter.
- Be sure the trailing edge of blade (opposite sharp edge) is up toward the engine.
- Install the blade bolt with the lock washer and hardened washer into blade adapter and crankshaft.
- Use block of wood between blade and lawn mower housing and tighten the blade bolt, turning clockwise.
- The recommended tightening torque is 35-40 ft. lbs.

**IMPORTANT:** BLADE BOLT IS GRADE 8 HEAT TREATED.

**NOTE:** We do not recommend sharpening blade - but if you do, be sure the blade is balanced.

#### TO SHARPEN BLADE

Care should be taken to keep the blade balanced. An unbalanced blade will cause eventual damage to lawn mower or engine.

- The blade can be sharpened with a file or on a grinding wheel. Do not attempt to sharpen while on the mower.
- To check blade balance, drive a nail into a beam or wall. Leave about one inch of the straight nail exposed. Place center hole of blade over the head of the nail. If blade is balanced, it should remain in a horizontal position. If either end of the blade moves downward, sharpen the heavy end until the blade is balanced.

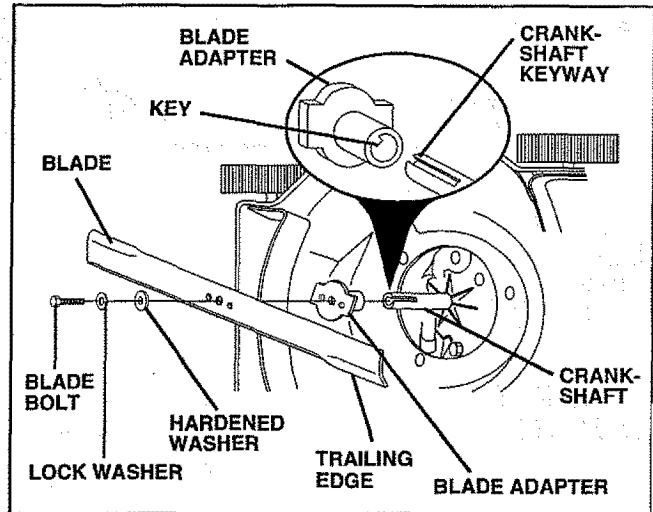


FIG. 7

## DRIVE WHEELS

Check front drive wheels each time before you mow to be sure they move freely.

The wheels not turning freely means trash, grass cuttings, etc. are in the drive wheel area and must be cleaned to free drive wheels.

If necessary to clean the drive wheels, check both front wheels.

- Remove hubcaps, hairpin cotters and washers.
- Remove wheels from wheel adjusters.
- Remove any trash or grass cuttings from inside the dust cover, pinion and/or drive wheel gear teeth.
- Put wheels back in place.
- If after cleaning, the drive wheels do not turn freely, contact your nearest authorized service center.

## GEAR CASE

- To keep your drive system working properly, the gear case and area around the drive should be kept clean and free of trash build-up. Clean under the drive cover twice a season.
- The gear case is filled with lubricant to the proper level at the factory. The only time the lubricant needs attention is if service has been performed on the gear case.
- If lubricant is required, use only Texaco Starplex Premium 1 Grease, Part No. 750369. Do not substitute.

## GRASS CATCHER

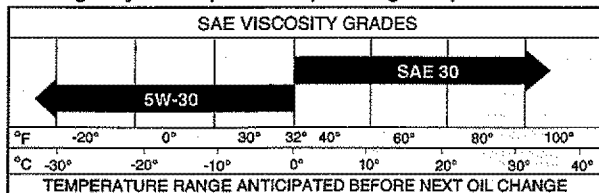
(If purchased as an accessory)

- The grass catcher may be hosed with water, but must be dry when used.
- Check your grass catcher often for damage or deterioration. Through normal use it will wear. If catcher needs replacing, replace only with a manufacturer approved replacement catcher. Give the lawn mower model number when ordering.

# CUSTOMER RESPONSIBILITIES

## ENGINE LUBRICATION

Use only high quality detergent oil rated with API service classification SG. Select the oil's SAE viscosity grade according to your expected operating temperature.



**NOTE:** Although multi-viscosity oils (5W30, 10W30 etc.) improve starting in cold weather, these multi-viscosity oils will result in increased oil consumption when used above 32°F. Check your engine oil level more frequently to avoid possible engine damage from running low on oil. Change the oil after the first two hours of operation and every 25 hours thereafter or at least once a year if the lawn mower is not used for 25 hours in one year. Check the crankcase oil level before starting the engine and after each five (5) hours of continuous use. Add SAE 30 motor oil or equivalent. Tighten oil plug securely each time you check the oil level.

**TO CHANGE ENGINE OIL** (See Fig. 8)

**NOTE:** Before tipping lawn mower to drain oil, drain fuel tank by running engine until fuel tank is empty.

- Disconnect spark plug wire from spark plug and place wire where it cannot come in contact with spark plug.
- Remove engine oil cap; lay aside on a clean surface.
- Tip lawn mower on its side and drain oil into a suitable container. Rock lawn mower back and forth to remove any oil trapped inside of engine.
- Wipe off any spilled oil on lawn mower and on side of engine.
- Fill engine with oil. Fill only to the "FULL" line on the dipstick. **DO NOT OVER FILL.**
- Replace engine oil cap.
- Reconnect spark plug wire to spark plug.

## AIR FILTER

Your engine will not run properly and may be damaged by using a dirty air filter.

Replace the air filter every year, more often if you mow in very dusty, dirty conditions.

**TO SERVICE AIR FILTER** (See Fig. 9)

- Loosen screw and tilt cover as shown.
- Carefully remove cartridge.
- Clean by tapping gently on a flat surface. If very dirty, replace cartridge or clean as follows:
- Wash in a low or non-sudsing detergent and warm water solution. Rinse thoroughly with flowing water from mesh side until water runs clear. Let cartridge air dry thoroughly before using.



**CAUTION:** Petroleum solvents, such as kerosene, are not to be used to clean cartridge. They may cause deterioration of the cartridge. Do not oil cartridge. Do not use pressurized air to clean or dry cartridge.

- Install cartridge, then replace cover making sure the tabs are aligned with the slots in back plate. Fasten screw securely.

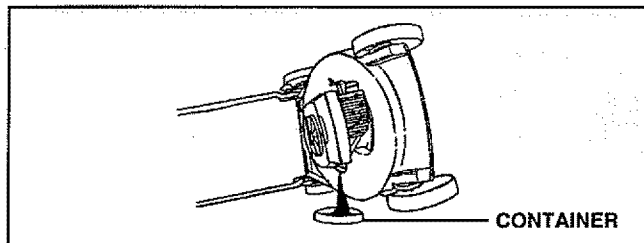


FIG. 8

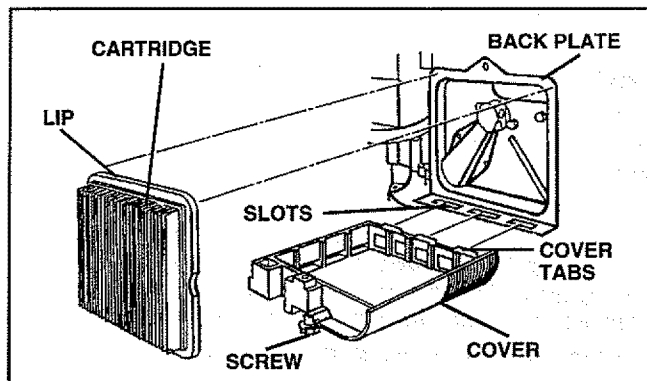


FIG. 9

## MUFFLER

Inspect and replace corroded muffler as it could create a fire hazard and/or damage.

## SPARK PLUG

Change your spark plug each year to make your engine start easier and run better. Set spark plug gap at .030 inch.

## CLEANING

**IMPORTANT:** FOR BEST PERFORMANCE, KEEP MOWER HOUSING FREE OF BUILT-UP GRASS AND TRASH. CLEAN THE UNDERSIDE OF YOUR MOWER AFTER EACH USE.



**CAUTION:** Disconnect spark plug wire from spark plug and place wire where it cannot come in contact with the spark plug.

- Turn lawn mower on its side. Make sure air filter and carburetor are up. Clean the underside of your lawn mower by scraping to remove build-up of grass and trash.
- Clean engine often to keep trash from accumulating. A clogged engine runs hotter and shortens engine life.
- Keep finished surfaces and wheels free of all gasoline, oil, etc.
- We do not recommend using a garden hose to clean lawn mower unless the electrical system, muffler, air filter and carburetor are covered to keep water out. Water in engine can result in shortened engine life.

## CLEAN UNDER DRIVE COVER

Clean under drive cover at least twice a season. Scrape underside of cover with putty knife or similar tool to remove any build-up of trash or grass on underside of drive cover.

# SERVICE AND ADJUSTMENTS



## CAUTION: BEFORE PERFORMING ANY SERVICE OR ADJUSTMENTS:

- Release control bar.
- Make sure the blade and all moving parts have completely stopped.
- Disconnect spark plug wire from spark plug and place where it cannot come in contact with plug.

## LAWN MOWER

### TO ADJUST CUTTING HEIGHT

See "TO ADJUST CUTTING HEIGHT" in the Operation section of this manual.

### DISCHARGE GUARD

The discharge guard, attached to the discharge opening of your lawn mower, is provided to prevent the possibility of injury resulting from objects being thrown out of the discharge opening into the operator mowing position. If the discharge guard becomes damaged, it should be replaced.

### TO REMOVE/REPLACE DRIVE BELT (See Fig. 10)

- Remove drive cover. Remove belt by pushing down on gear case pulley.
- Turn lawn mower on its side with carburetor and fuel cap up.
- Remove blade.
- Remove debris shield.
- Remove belt from engine pulley on crankshaft.
- Install new belt by reversing above steps.
- Always use factory approved belt to assure fit and long life.

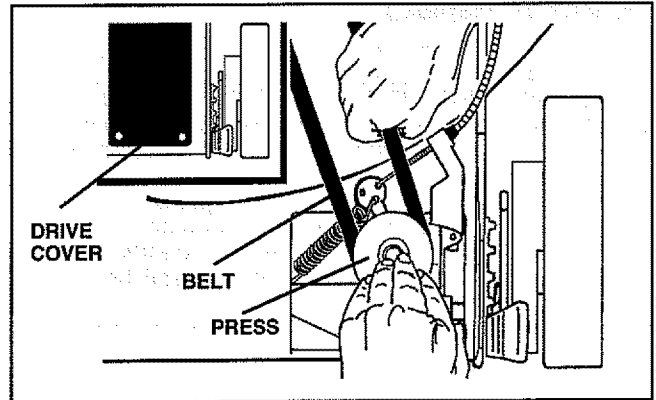


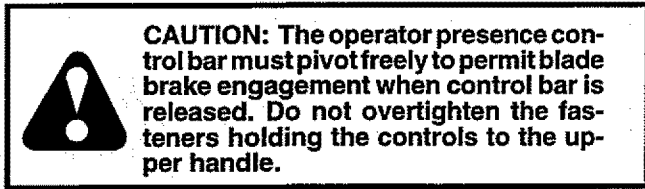
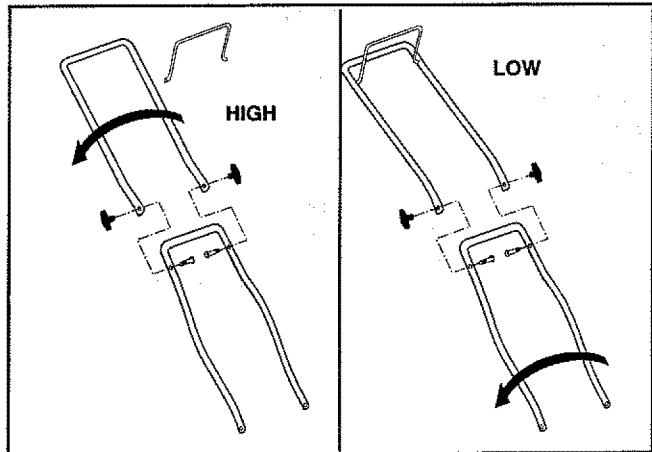
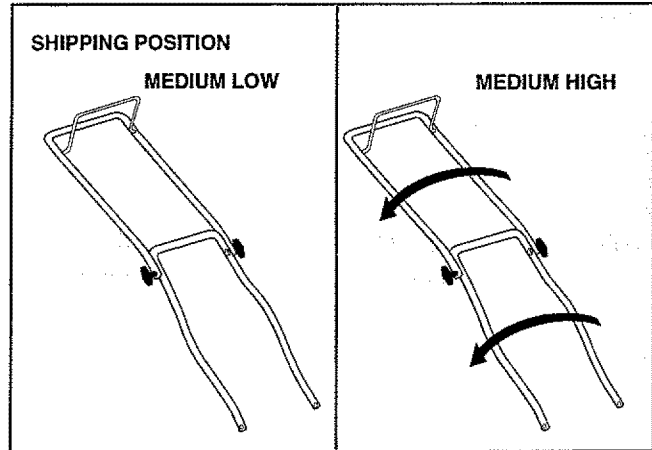
FIG. 10

# SERVICE AND ADJUSTMENTS

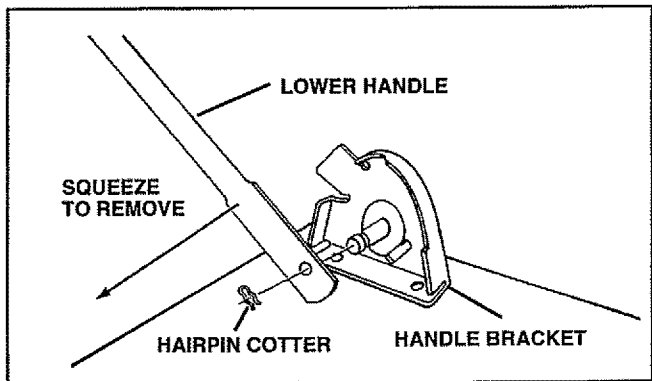
## TO ADJUST HANDLE (See Figs. 11 Thru 13)

Your lawn mower handle can be raised or lowered for your mowing comfort. Four (4) positions are available: high, medium high, medium low and low. Handles are shipped mounted in the medium low position.

- To change from medium low to medium high position, the upper and lower handle sections will have to be turned over (See Fig. 11B).
- Remove the controls and operator presence control bar from the upper handle.
- Remove the starter rope guide from the lower handle.
- Remove hairpin cotters.
- Disconnect the lower handle from the handle brackets (See Fig. 13).
- Turn the handle over and reassemble the hairpin cotters that have been removed.
- Reassemble the starter rope guide.
- Reassemble the controls and the operator presence control bar to the upper handle.



- To change from medium low to high position only the upper handle section will have to be turned over (See Fig. 12A).
- To change from medium low to low position, only the lower handle section will have to be turned over (See Fig. 12B).



# SERVICE AND ADJUSTMENTS

## ENGINE

### ENGINE SPEED

Your engine speed has been factory set. Do not attempt to increase engine speed or it may result in personal injury. If you believe that engine is running too fast or too slow, take your mower to an authorized service center for repair and adjustment.

### TO ADJUST CARBURETOR (See Fig. 14)

Minor carburetor adjustments may be required to compensate for differences in fuel, temperature, altitude or load. The air cleaner and air cleaner cover must be assembled to carburetor when running.

#### INITIAL ADJUSTMENT-

With the engine not running, gently turn idle mixture screw clockwise until it just closes. Screw may be damaged by turning it in too far.

Next open the screw one turn counter-clockwise. This initial adjustment will permit the engine to be started and warmed up (approximately 5 minutes) prior to final adjustment.

**NOTE:** DO NOT adjust top no load adjusting screw. It was pre-set at the factory.

#### FINAL ADJUSTMENT-

Place engine speed control lever in "IDLE" or "SLOW" (☛) position. Adjust idle RPM by turning idle speed adjusting screw to obtain 1700 RPM. Next, turn idle mixture screw in (clockwise - lean mixture) until engine just starts to slow. Then turn idle mixture screw out (counter-clockwise - rich

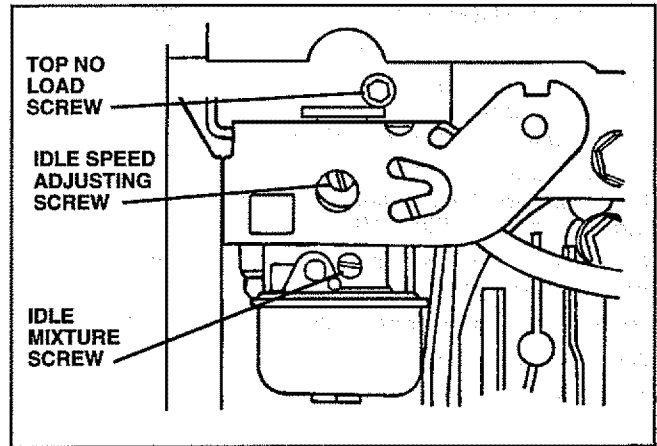


FIG. 14

mixture) until engine runs unevenly. Now turn idle mixture screw midway between rich and lean. Engine should accelerate smoothly. If engine does not accelerate properly, the carburetor should be readjusted, usually to a richer mixture, by turning the idle mixture screw counter-clockwise 1/8 turn more.

**IMPORTANT:** NEVER TAMPER WITH THE ENGINE GOVERNOR, WHICH IS FACTORY SET FOR PROPER ENGINE SPEED. OVERSPEEDING THE ENGINE ABOVE THE FACTORY HIGH SPEED SETTING CAN BE DANGEROUS. IF YOU THINK THE ENGINE-GOVERNED HIGH SPEED NEEDS ADJUSTING, CONTACT YOUR NEAREST AUTHORIZED SERVICE CENTER, WHICH HAS PROPER EQUIPMENT AND EXPERIENCE TO MAKE ANY NECESSARY ADJUSTMENTS.

# STORAGE

Immediately prepare your lawn mower for storage at the end of the season or if the unit will not be used for 30 days or more.

## LAWN MOWER

When lawn mower is to be stored for a period of time, clean it thoroughly, remove all dirt, grease, leaves, etc. Store in a clean, dry area.

- Clean entire lawn mower (See "CLEANING" in the Customers Responsibilities section of this manual).
- Lubricate as shown in the Customers Responsibilities section of this manual.
- Be sure that all nuts, bolts, screws, and pins are securely fastened. Inspect moving parts for damage, breakage and wear. Replace if necessary.
- Touch up all rusted or chipped paint surfaces; sand lightly before painting.

## HANDLE (See Fig. 15)

You can fold your lawn mower handle for storage.

- Squeeze the bottom ends of the lower handle toward each other until the lower handle clears the handle bracket, then move handle forward.
- Loosen upper handle mounting bolts enough to allow upper handle to be folded back.

**IMPORTANT:** WHEN FOLDING THE HANDLE FOR STORAGE OR TRANSPORTATION, BE SURE TO FOLD THE HANDLE AS SHOWN OR YOU MAY DAMAGE THE CONTROL CABLES.

- When setting up your handle from the storage position, the lower handle will automatically lock into the mowing position.

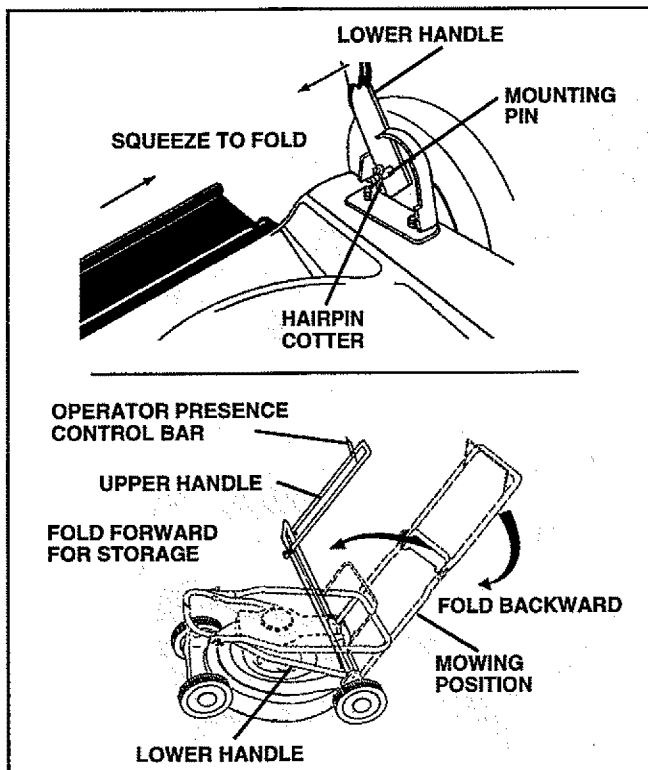


FIG. 15

## ENGINE

### FUEL SYSTEM

**IMPORTANT:** IT IS IMPORTANT TO PREVENT GUM DEPOSITS FROM FORMING IN ESSENTIAL FUEL SYSTEM PARTS SUCH AS CARBURETOR, FUEL FILTER, FUEL HOSE, OR TANK DURING STORAGE. ALSO, EXPERIENCE INDICATES THAT ALCOHOL BLENDED FUELS (CALLED GASOHOL OR USING ETHANOL OR METHANOL) CAN ATTRACT MOISTURE WHICH LEADS TO SEPARATION AND FORMATION OF ACIDS DURING STORAGE. ACIDIC GAS CAN DAMAGE THE FUEL SYSTEM OF AN ENGINE WHILE IN STORAGE.

- Drain the fuel tank.
- Start the engine and let it run until the fuel lines and carburetor are empty.
- Never use engine or carburetor cleaner products in the fuel tank or permanent damage may occur.
- Use fresh fuel next season.

**NOTE:** Fuel stabilizer is an acceptable alternative in minimizing the formation of fuel gum deposits during storage. Add stabilizer to gasoline in fuel tank or storage container. Always follow the mix ratio found on stabilizer container. Run engine at least 10 minutes after adding stabilizer to allow the stabilizer to reach the carburetor. Do not drain the gas tank and carburetor if using fuel stabilizer.

### ENGINE OIL

Drain oil (with engine warm) and replace with clean engine oil. (See "ENGINE" in the Customers Responsibilities section of this manual).

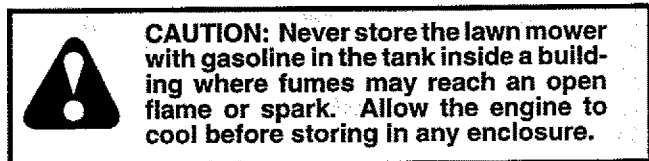
### CYLINDER

- Remove spark plug.
- Pour one ounce (29 ml) of oil through spark plug hole into cylinder.
- Pull starter handle slowly a few times to distribute oil.
- Replace with new spark plug.

### OTHER

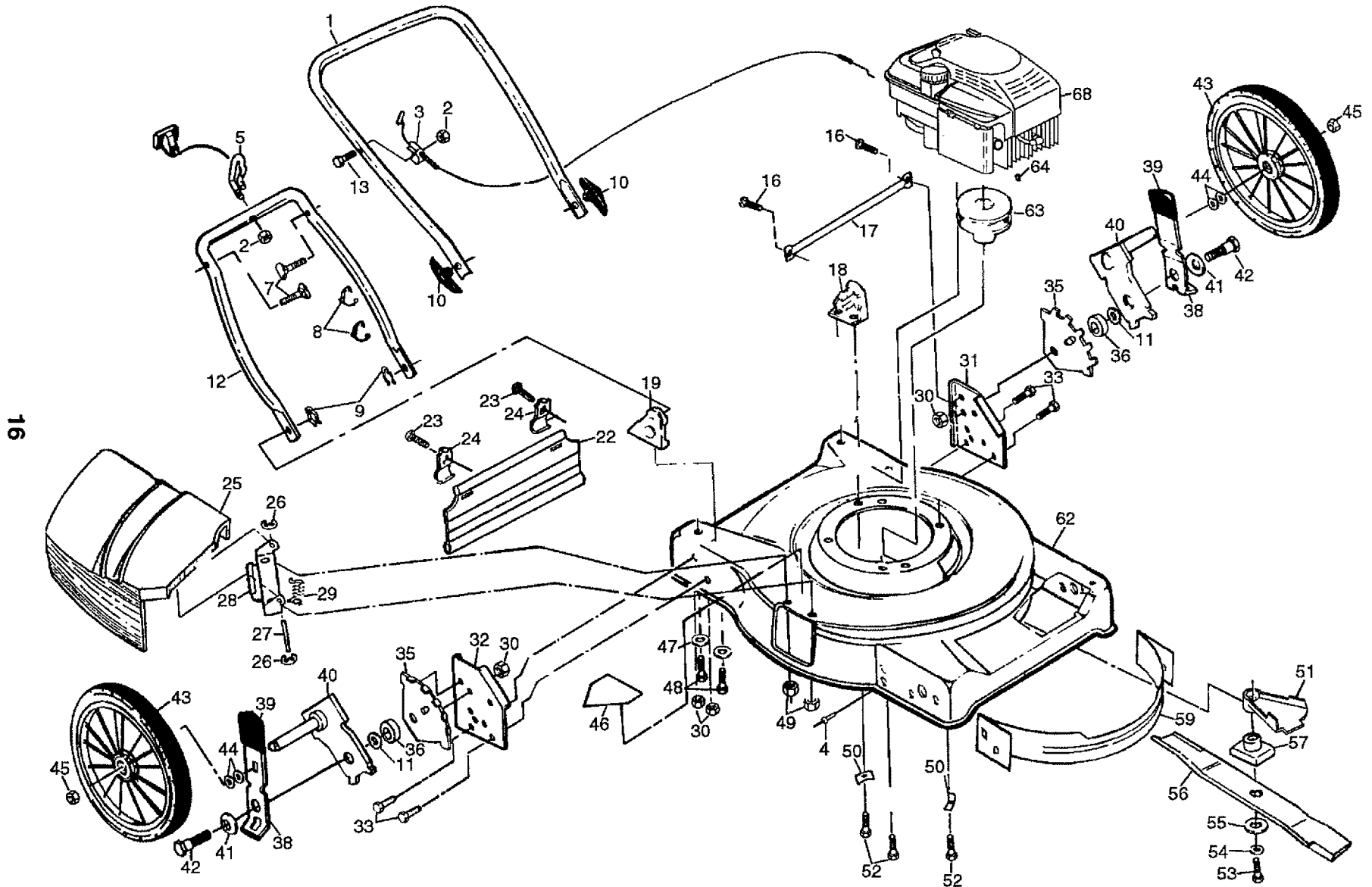
- Do not store gasoline from one season to another.
- Replace your gasoline can if your can starts to rust. Rust and/or dirt in your gasoline will cause problems.
- If possible, store your unit indoors and cover it to give protection from dust and dirt.
- Cover your unit with a suitable protective cover that does not retain moisture. Do not use plastic. Plastic cannot breathe which allows condensation to form and will cause your unit to rust.

**IMPORTANT:** NEVER COVER MOWER WHILE ENGINE AND EXHAUST ARE STILL WARM.



# REPAIR PARTS

## CRAFTSMAN 22" ROTARY LAWN MOWER - MODEL NO. 917.378590

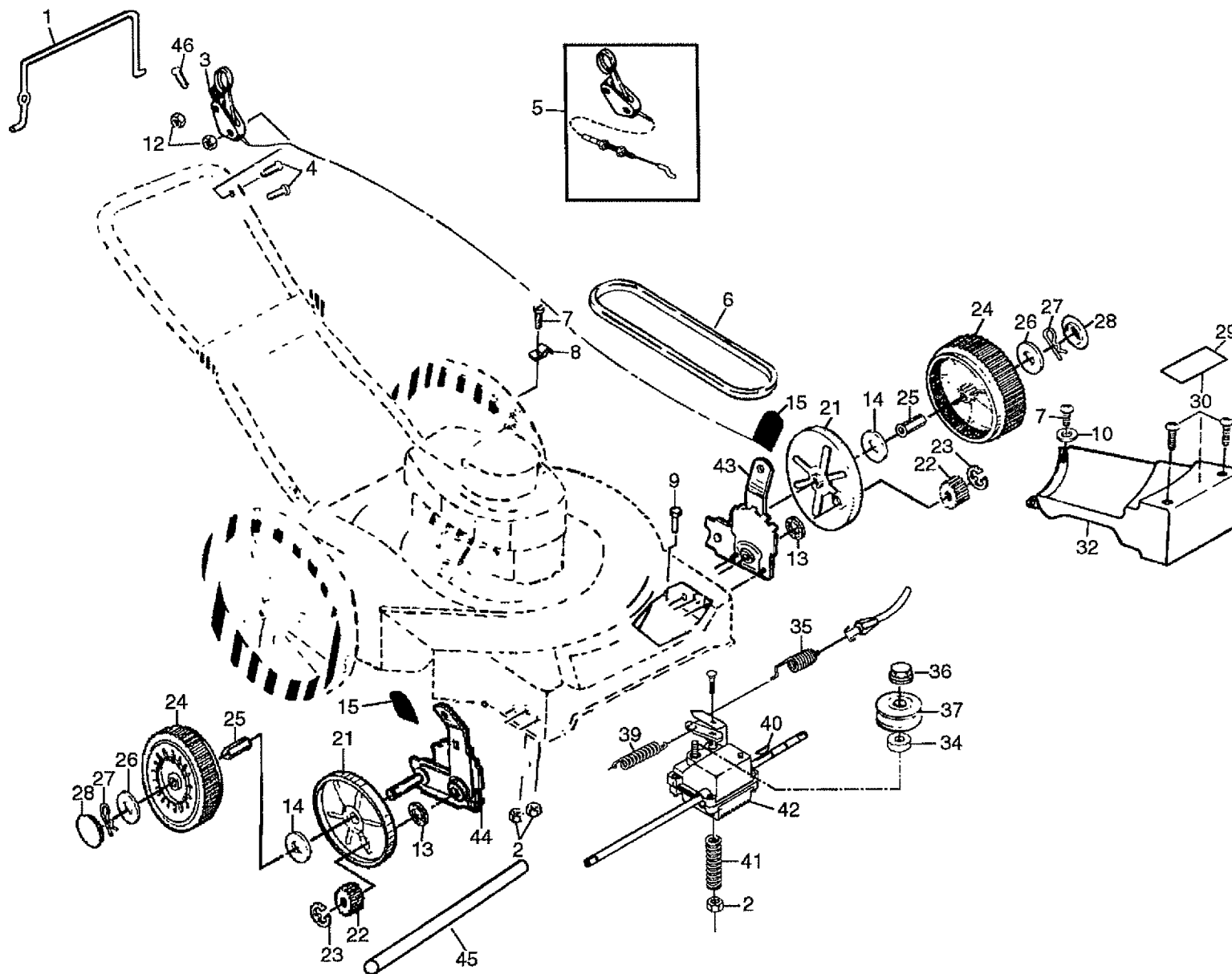






# REPAIR PARTS

## CRAFTSMAN 22" ROTARY LAWN MOWER - MODEL NO. 917.378590



# REPAIR PARTS

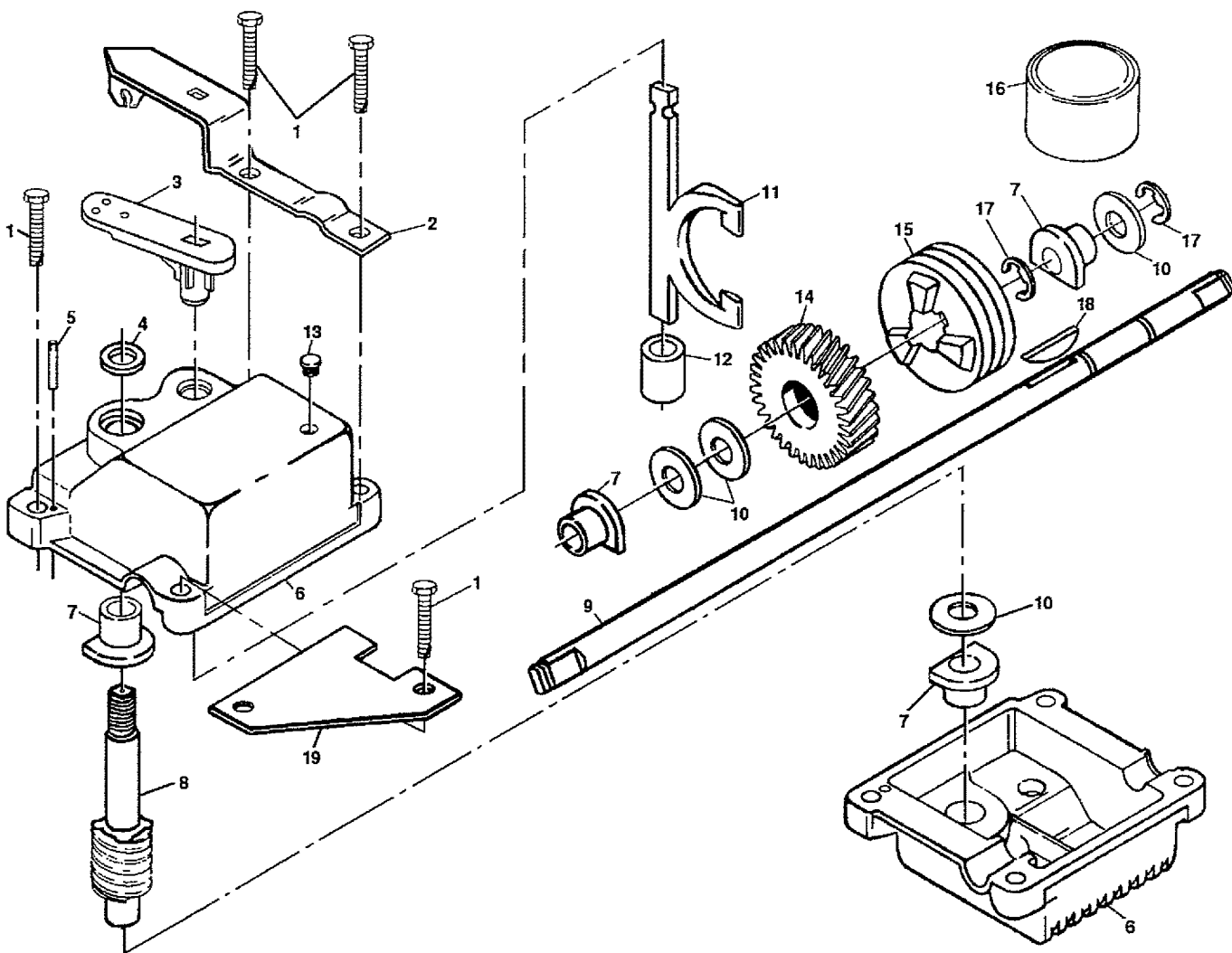
## CRAFTSMAN 22" ROTARY LAWN MOWER - MODEL NO. 917.378590

KEY PART NO.	PART NO.	DESCRIPTION	KEY PART NO.	PART NO.	DESCRIPTION
1	851509	Control Bar	26	52160	Flat Washer
2	STD541425	Locknut 1/4-20	27	85179	Retainer Clip
3	48029	Control Head Kit	28	77400	Hubcap
4	750029	Screw #10-24 x 2	29	702182	Drive Cover Decal
5	137076	Control Cable Assembly	30	87866	Pan Head Tapping Screw #10-24 x 2-3/4
6	137078	V-Belt	32	137088	Drive Cover
7	750097	Hex Washer Head Screw #10-24 x 1/2	34	77881	Spacer
8	87930	Clip Guide (Housing)	35	48323	Drive Control Cable Kit
9	700875	Carriage Bolt 1/4-20 x 2	36	132010	Flanged Locknut 3/8-16
10	4802	Washer	37	137052	Drive Pulley
12	69180	Locknut #10-24	39	75192	Spring
13	88118	Felt Washer	40	850848	Hi-Pro Key
14	67725	Washer 1/2 x 1-1/2 x .134	41	137090	Spring
15	87877	Selector Knob	42	702511	Gear Case Assembly (Complete)
21	88080	Dust Cover	43	751809	Wheel Adjuster Assembly (Left)
22	137054	Pinion	44	751810	Wheel Adjuster Assembly (Right)
23	12000058	E-Ring	45	86012	Drive Shaft Cover
24	700953	Wheel & Tire Assembly	46	851552	Pan Head Hi Lo Screw #10-16 x .63
25	86960	Wheel Bushing			

# REPAIR PARTS

22" CRAFTSMAN ROTARY LAWN MOWER - - MODEL NO. 917.378590

GEAR CASE ASSEMBLY PART NUMBER 702511



KEY NO.	PART NO.	DESCRIPTION
1	17490416	Tapping Screw 1/4-20 x 1-1/4
2	137055X004	Engagement Bracket
3	137053	Shifter
4	57072	Seal
5	702710	Grooved Pin 1/8 x 5/8
6	48373	Gear Case Halves Kit (Includes Key Nos. 4, 5, and 7)
7	77881	Bearing
8	137051	Worm Shaft
9	137074	Drive Shaft
10	57079	Hardened Washer
11	131484	Clutch Yoke
12	700343	Bushing

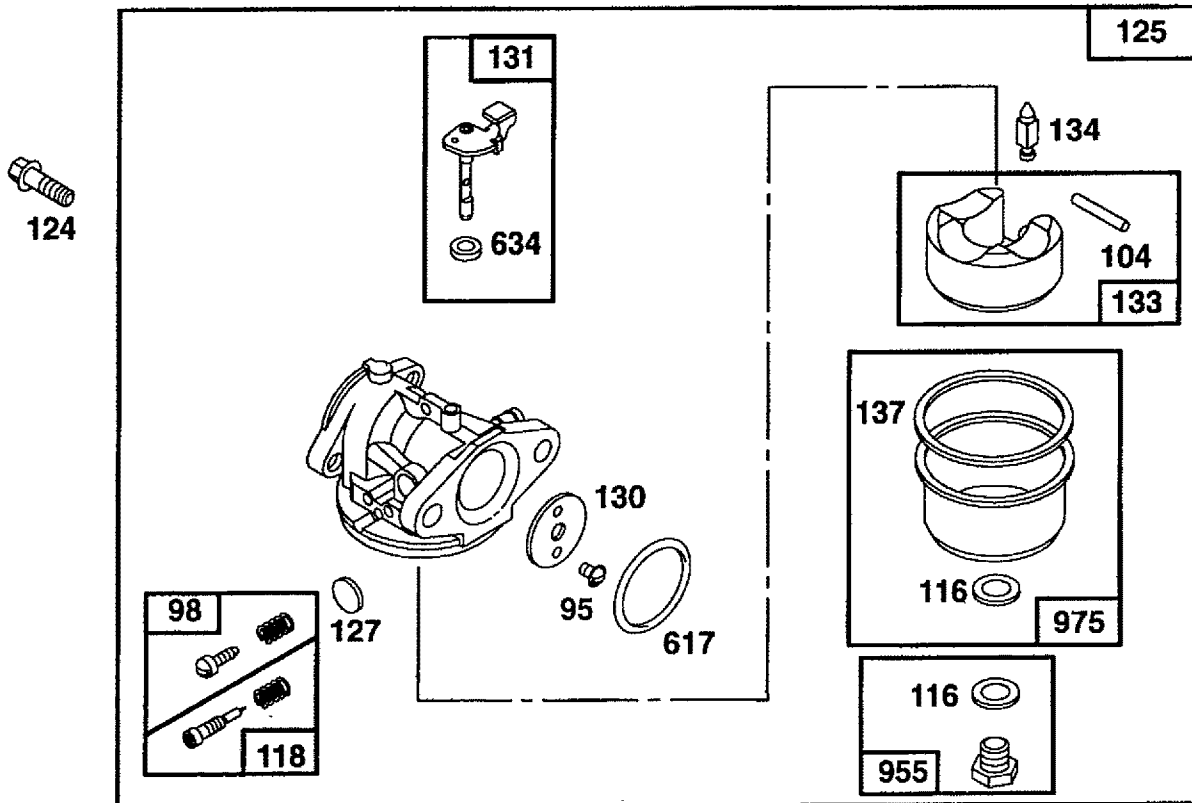
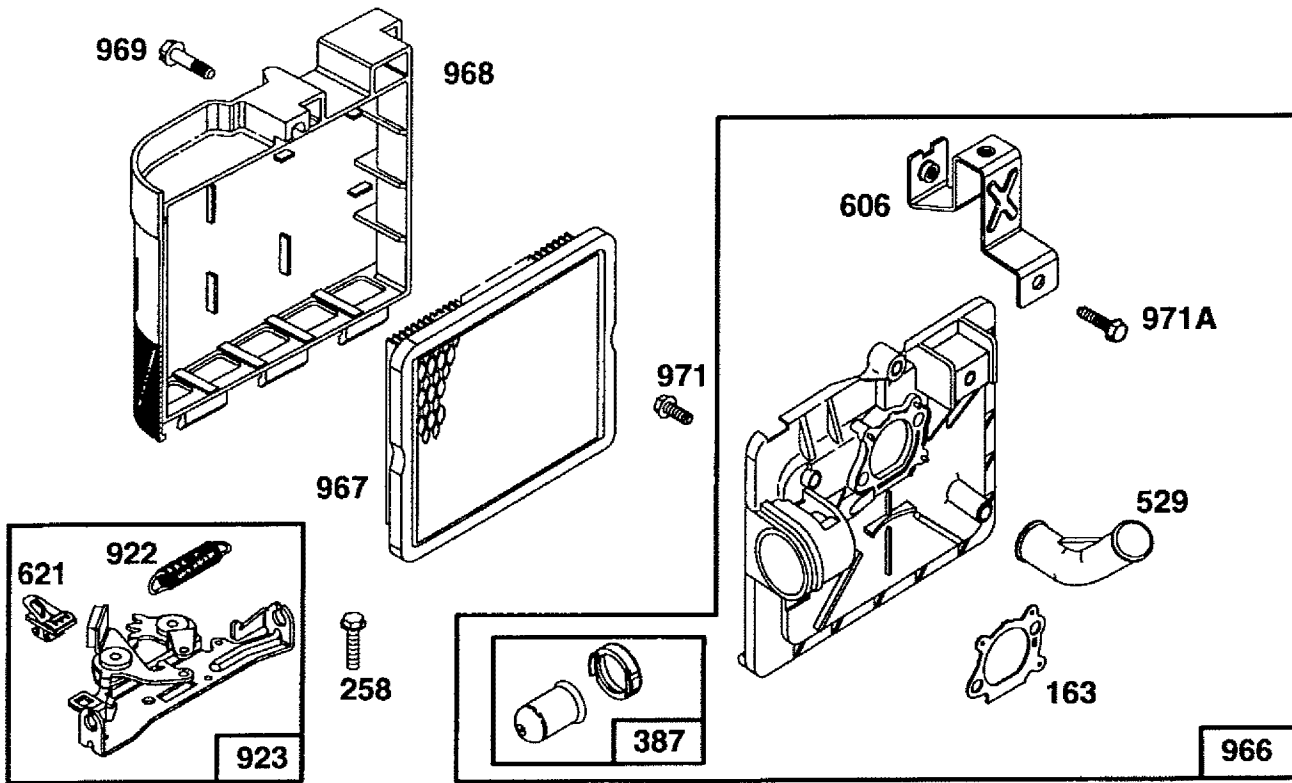
KEY NO.	PART NO.	DESCRIPTION
13	86447	Plug
14	137050	Helical Gear
15	750436X	Clutch Jaw
16	750369	Grease
17	12000003	E-Ring
18	850848	Hi-Pro Key
19	81585X004	Spring Bracket

**NOTE:** To reseal housing halves use Loctite No. 515, Part No. 77923

**NOTE:** All component dimensions given in U.S. inches. 1 inch = 25.4 mm

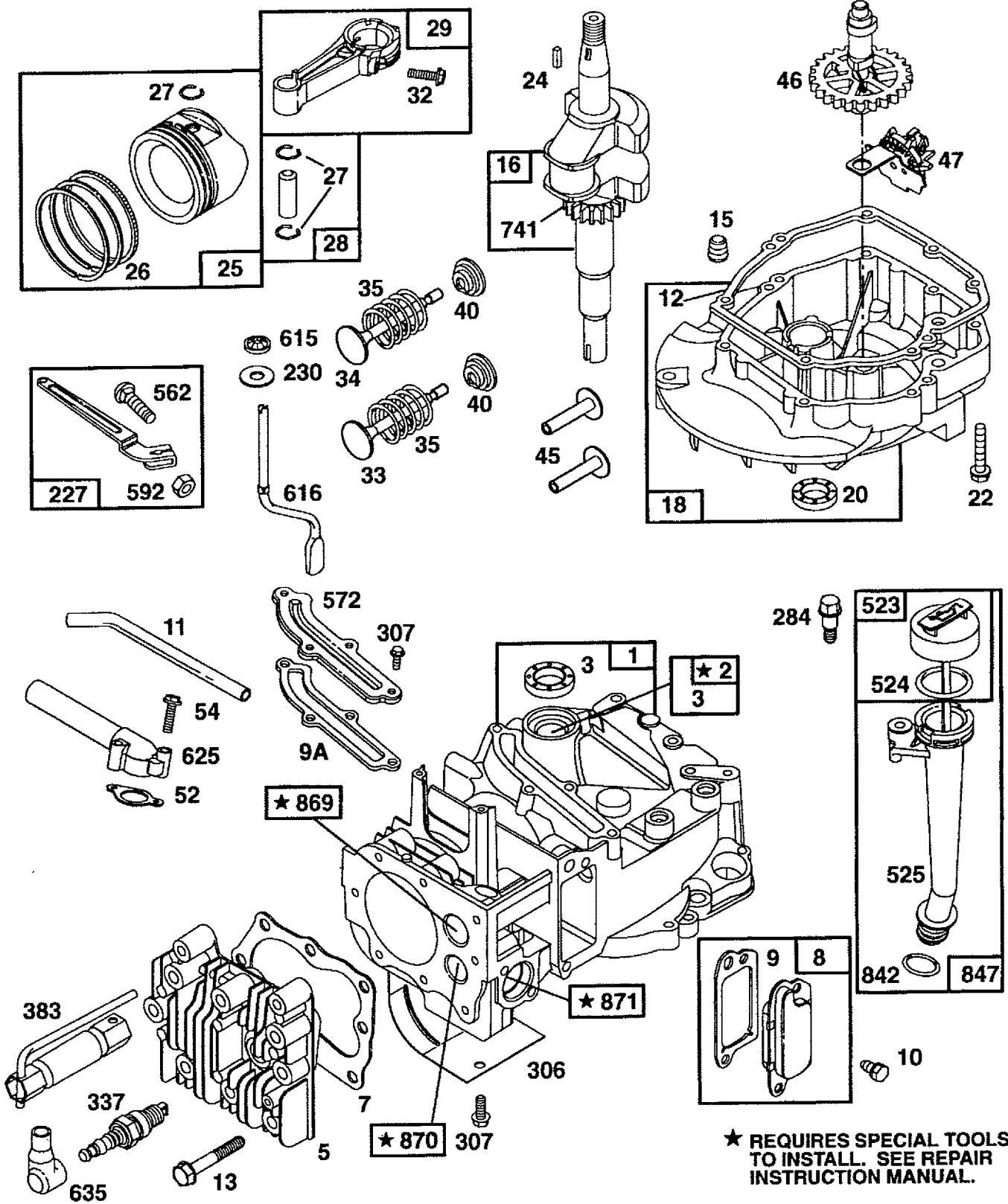
**BRIGGS & STRATTON  
4-CYCLE ENGINE**

**MODEL NO. 128802  
TYPE NO. 0519-21**

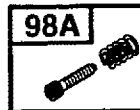
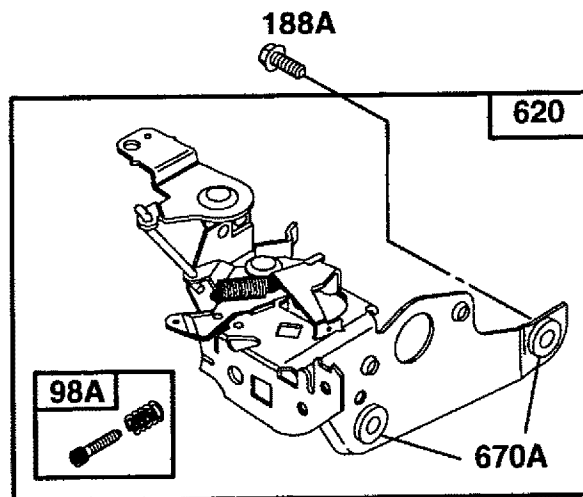
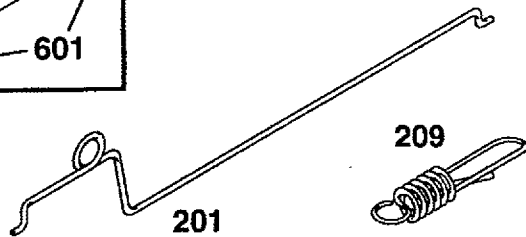
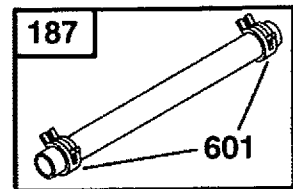
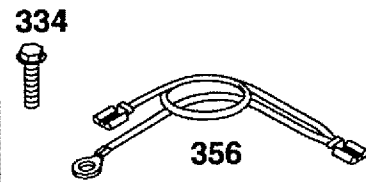
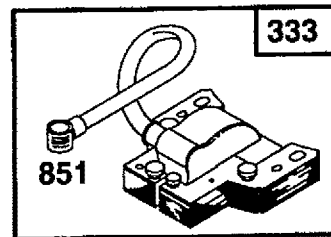
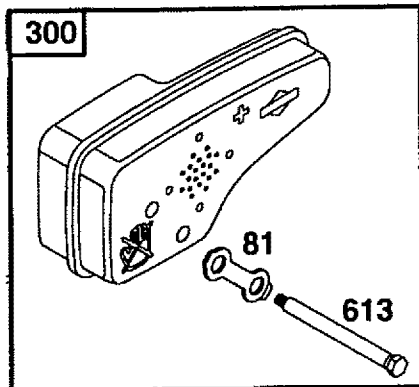
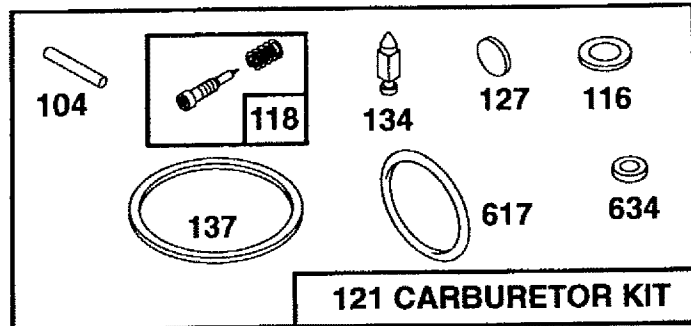
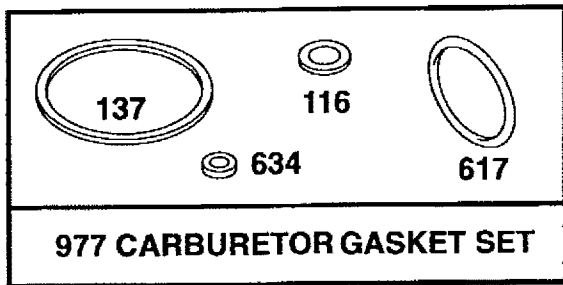
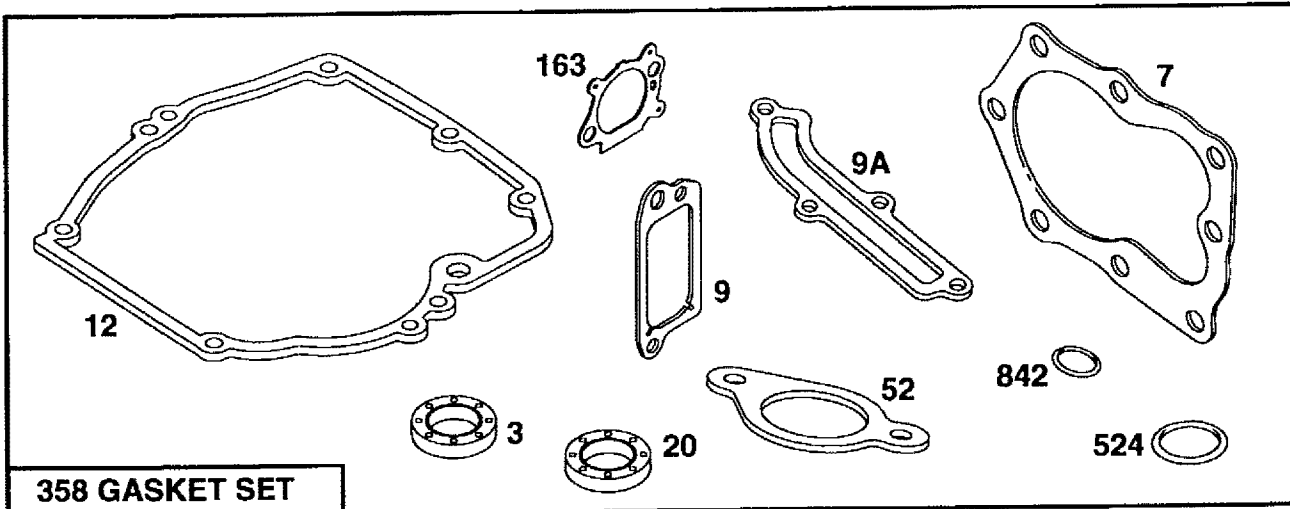


**BRIGGS & STRATTON  
4-CYCLE ENGINE**

**MODEL NO. 128802  
TYPE NO. 0519-21**

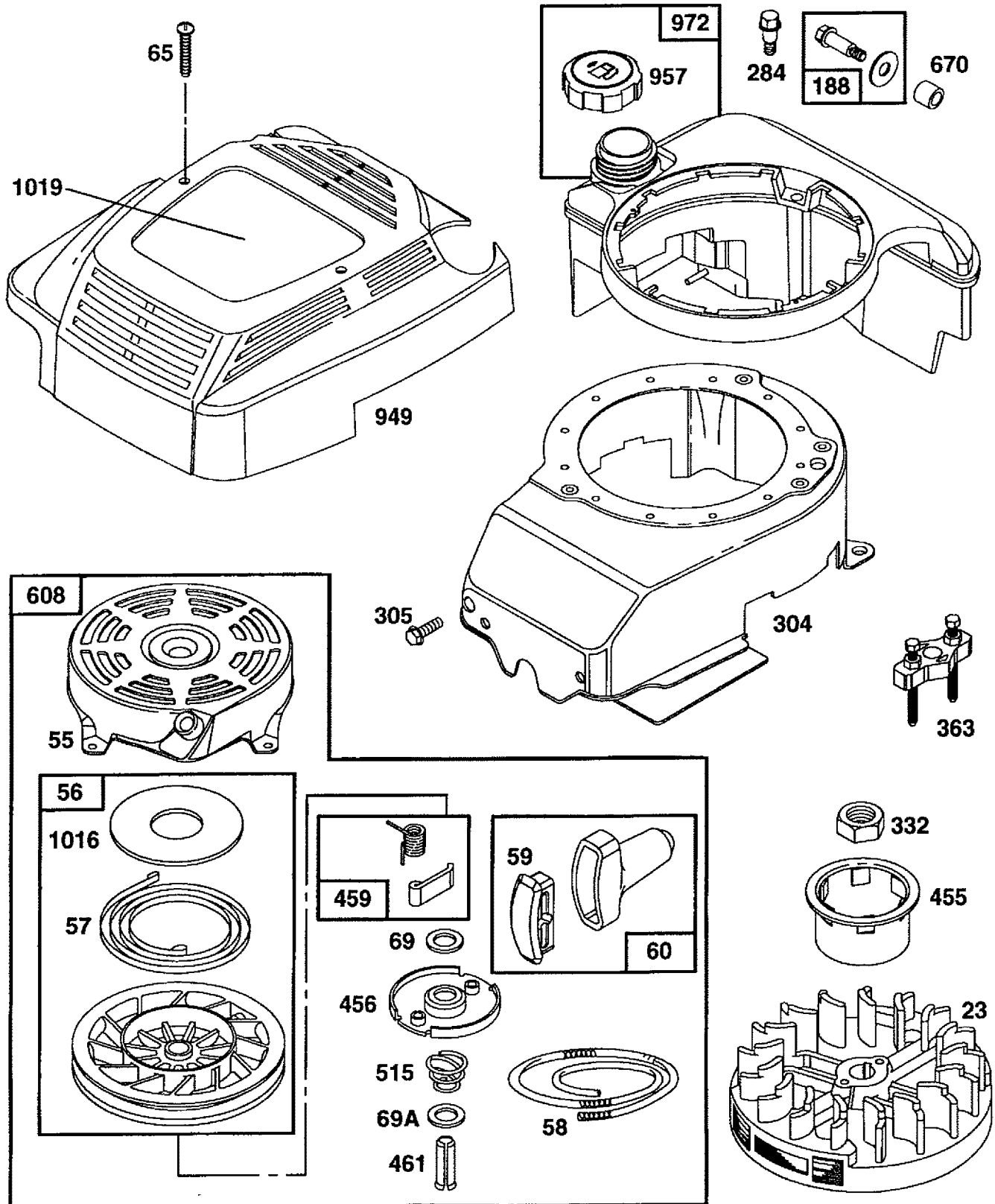


**★ REQUIRES SPECIAL TOOLS  
TO INSTALL. SEE REPAIR  
INSTRUCTION MANUAL.**



**BRIGGS & STRATTON  
4-CYCLE ENGINE**

**MODEL NO. 128802  
TYPE NO. 0519-21**





**BRIGGS & STRATTON  
4-CYCLE ENGINE**

**MODEL NO. 128802  
TYPE NO. 0519-21**

KEY PART NO. NO.	DESCRIPTION	KEY PART NO. NO.	DESCRIPTION
1 493260	Cylinder Assembly	47 493737	Slinger, Oil
2 293708	Bushing, Cylinder	52 272199	* Gasket, Intake Elbow
3 299819	* Seal, Oil	54 94526	Screw, Hex Head
5 214193	Head, Cylinder	55 492831	Housing, Rewind Starter
7 272200	* Gasket, Cylinder Head	56 493824	Pulley, Rewind Starter
8 495786	Breather Assembly	57 262594	Spring, Rewind Starter
9 272481	* Gasket, Valve Cover	58 280399	Rope, Rewind Starter (Cut To 88-5/8")
9A 272238	* Gasket, Baffle Plate	59 396892	Insert, Starter Grip
10 94650	Screw, Hex Head	60 393152	Grip, Starter Rope
11 231685	Tube, Breather	65 94696	Screw, Hex Head
12 272198	* Gasket, Crankcase	69 280973	Washer, Spring
13 94547	Screw, Cylinder Head	69A 224322	Washer, Flat
15 94720	Plug, Oil Drain	81 223664	Lock, Muffler Screw
16 493362	Crankshaft	95 94098	Screw, Round Head
94388	Timing Gear Key	98 398185	Screw, Idle Adjustment
18 493279	Sump, Engine	98A 493280	Screw, Speed Adjustment
20 399781	* Seal, Oil	104 231371	** Pin, Float Hinge
22 94220	Screw, Hex Head	116 - - -	*** Gasket, Sealing (Sold in Kit Only)
94612	(Used in Hole Nearest Breather)	118 493765	** Valve Kit, Needle
23 492177	Flywheel	121 493762	Carburetor Kit
24 222698	Key, Flywheel	124 94525	Screw, Carburetor Mounting
25 493262	Piston Assembly, Standard Size	125 496625	Carburetor
493385	Piston Assembly, .010" Oversize	127 - - -	** Plug, Welch (Sold in Kit Only)
493386	Piston Assembly, .020" Oversize	130 223470	Valve, Throttle
493387	Piston Assembly, .030" Oversize	131 493267	Shaft, Throttle
26 493261	Ring Set, Piston, Standard Size	133 398187	Float, Carburetor
493388	Ring Set, Piston, .010" Oversize	134 398188	Valve, Inlet (Includes Seat)
493389	Ring Set, Piston, .020" Oversize	137 - - -	*** Gasket, Bowl (Sold in Kit Only)
493390	Ring Set, Piston, .030" Oversize	163 272653	* Gasket, Air Cleaner
27 26026	Lock, Piston Pin	187 492790	Hose, Fuel
28 298909	Pin, Piston, Standard Size	188 398540	Screw, Hex Head
298908	Pin, Piston, .005" Oversize	188A 94644	Screw, Hex Head
29 490566	Rod, Connecting	201 262579	Link, Governor
490743	Rod, Connecting, .020" Undersize		
32 94699	Screw, Connecting Rod		
33 262651	Valve, Exhaust	* Included in Gasket Set (496117)	
34 262652	Valve, Intake	** Included in Carburetor Kit (493762)	
35 262224	Spring, Valve	*** Included in both Carburetor Kit (493762), and Carburetor Gasket Set (490937)	
40 93312	Retainer, Valve Spring		
45 262204	Tappet, Valve		
46 492830	Gear, Cam		

**NOTE:** All component dimensions given in U.S. inches  
1 inch = 25.4 mm

**BRIGGS & STRATTON  
4-CYCLE ENGINE**

**MODEL NO. 128802  
TYPE NO. 0519-21**

KEY PART NO. NO.	DESCRIPTION
209 262660	Spring, Governor
227 492349	Lever, Governor
230 67072	Washer, Thrust
258 94512	Screw, Hex Head
284 94511	Screw, Hex Head
300 496106	Muffler, Exhaust
304 493293	Housing, Blower
305 94786	Screw, Sems
306 224324	Shield, Cylinder
307 94515	Screw, Hex Head
332 92284	Nut, Flywheel
333 802574	Armature, Magneto
334 94731	Screw, Sems
337 802592	Plug, Spark
356 398808	Wire, Ground
358 496117	Gasket Set
363 19069	Puller, Flywheel
383 89838	Wrench, Spark Plug
387 496115	Primer, Carburetor
455 224250	Cup, Starter
456 224321	Retainer, Starter
459 492833	Pawl, Ratchet
461 262626	Pin, Shaft
515 262625	Spring, Retainer
523 495264	Cap, Oil Filler
524 280393	* Seal, Filler Tube
525 495265	Tube, Oil Fill
529 281299	Grommet
562 92613	Bolt, Governor Lever
572 224328	Baffle, Cylinder
592 231082	Nut, Hex
601 93807	Clamp, Hose
606 224815	Strap, Bracket
608 493295	Starter, Rewind
	Includes:
	94128 Screw, Sems
	92987 Nut, Hex
613 94231	Screw, Hex Head
615 94474	Fastener
616 262578	Crank, Governor
617 270344	*** Seal, Intake Elbow
620 495976	Bracket, Carburetor
621 396847	Switch, Stop

KEY PART NO. NO.	DESCRIPTION
625 281025	Tube, Fuel Intake
634 - - -	*** Washer, Shaft (Sold in Kit Only)
635 66538	Elbow, Spark Plug
670 280512	Spacer, Fuel Tank
670A 493823	Spacer, Bracket
741 262598	Gear, Timing
842 280966	* Seal, O-Ring
843 272616	Sleeve, Lever
847 495263	Tube Assembly, Oil
851 221798	Terminal, Ignition Cable
869 213512	Seat, Intake Valve
870 213513	Seat, Exhaust Valve
871 262001	Guide, Exhaust Valve
	63709 Guide, Intake Valve
883 272253	Gasket, Muffler
922 262640	Spring, Brake
923 493442	Brake Assembly
949 496642	Guard, Finger
955 493637	Screw, Fuel Bowl
957 397974	Cap, Fuel Tank
966 496116	Base, Air Cleaner
967 491588	Filter, Air
968 281340	Cover, Air Cleaner
969 94120	Screw, Hex Head
971 94121	Screw, Hex Head
971A 94749	Screw, Hex Head
972 495224	Tank, Fuel
975 493640	Bowl, Float
977 490937	Gasket Set, Carburetor
1016 224278	Cover, Pulley
1019 496658	Label Kit

RPM Settings: Low Speed: 1900-2100  
High Speed: 3000-3200

- \* Included in Gasket Set (496117)
- \*\* Included in Carburetor Kit (493762)
- \*\*\* Included in both Carburetor Kit (493762), and Carburetor Gasket Set (490937)

**NOTE:** All component dimensions given in U.S. inches  
1 inch = 25.4 mm

# TROUBLESHOOTING POINTS

PROBLEM	CAUSE	CORRECTION
<b>Does not start</b>	<ol style="list-style-type: none"> <li>1. Dirty air filter.</li> <li>2. Out of fuel.</li> <li>3. Stale fuel.</li> <li>4. Water in fuel.</li> <li>5. Spark plug wire is disconnected.</li> <li>6. Bad spark plug.</li> <li>7. Loose blade or broken blade adapter.</li> <li>8. Control bar in released position</li> <li>9. Control bar defective</li> </ol>	<ol style="list-style-type: none"> <li>1. Clean/replace air filter.</li> <li>2. Fill fuel tank.</li> <li>3. Drain tank and refill with fresh clean fuel.</li> <li>4. Drain fuel tank and carburetor and refill tank with fresh gasoline.</li> <li>5. Connect wire to plug.</li> <li>6. Replace spark plug.</li> <li>7. Tighten blade bolt or replace blade adapter.</li> <li>8. Depress control bar to handle.</li> <li>9. Replace control bar.</li> </ol>
<b>Loss of power</b>	<ol style="list-style-type: none"> <li>1. Rear of lawn mower housing/blade dragging in heavy grass.</li> <li>2. Cutting too much grass.</li> <li>3. Dirty air filter.</li> <li>4. Buildup of grass, leaves and trash under mower.</li> <li>5. Too much oil in engine.</li> <li>6. Walking speed too fast.</li> </ol>	<ol style="list-style-type: none"> <li>1. Set in "Higher Cut" position.</li> <li>2. Set in "Higher Cut" position.</li> <li>3. Clean/replace air filter.</li> <li>4. Clean underside of mower housing.</li> <li>5. Check oil level.</li> <li>6. Cut at slower walking speed.</li> </ol>
<b>Poor cut - uneven</b>	<ol style="list-style-type: none"> <li>1. Worn, bent or loose blade</li> <li>2. Wheel heights uneven.</li> <li>3. Low engine speed.</li> <li>4. Buildup of grass, leaves, and trash under mower.</li> </ol>	<ol style="list-style-type: none"> <li>1. Replace blade. Tighten blade bolt.</li> <li>2. Set all wheels at same height.</li> <li>3. Set engine speed control in fast position.</li> <li>4. Clean underside of mower housing.</li> </ol>
<b>Excessive vibration</b>	<ol style="list-style-type: none"> <li>1. Worn, bent or loose blade.</li> <li>2. Bent engine crankshaft.</li> </ol>	<ol style="list-style-type: none"> <li>1. Replace blade. Tighten blade bolt.</li> <li>2. Contact an authorized service center/department.</li> </ol>
<b>Starter rope hard to pull</b>	<ol style="list-style-type: none"> <li>1. Engine flywheel brake is on when control bar is released.</li> <li>2. Bent engine crankshaft</li> <li>3. Blade adapter broken.</li> <li>4. Blade dragging in grass.</li> </ol>	<ol style="list-style-type: none"> <li>1. Depress control bar to upper handle before pulling starter rope.</li> <li>2. Contact an authorized service center/department.</li> <li>3. Replace blade adapter.</li> <li>4. Move lawn mower to cut grass or to hard surface to start engine.</li> </ol>
<b>Loss of drive (Self-Propelled Mowing)</b>	<ol style="list-style-type: none"> <li>1. Drive wheels not turning with drive control engaged.</li> <li>2. Belt not driving.</li> </ol>	<ol style="list-style-type: none"> <li>1. Adjust or replace drive control cable, if broken.</li> <li>2. Put belt on pulleys or replace belts if broken.</li> </ol>
<b>Grass catcher not filling (If so equipped)</b>	<ol style="list-style-type: none"> <li>1. Cutting height too low.</li> <li>2. Lift on blade worn off.</li> <li>3. Catcher not venting air.</li> <li>4. Low engine speed.</li> </ol>	<ol style="list-style-type: none"> <li>1. Raise cutting height.</li> <li>2. Replace blade.</li> <li>3. Clean grass catcher.</li> <li>4. Set engine speed control in fast position.</li> </ol>
<b>Hard to push</b>	<ol style="list-style-type: none"> <li>1. Grass is too high or wheel height is too low.</li> <li>2. Rear of lawn mower housing/blade dragging in grass.</li> <li>3. Grass catcher too full.</li> <li>4. Handle height position not right for you.</li> </ol>	<ol style="list-style-type: none"> <li>1. Raise cutting height.</li> <li>2. Raise rear of lawn mower housing one (1) setting higher.</li> <li>3. Empty grass catcher.</li> <li>4. Adjust handle height to suit.</li> </ol>

**SEARS**

**OWNER'S  
MANUAL**

**MODEL NO.  
917.378590**

**HOW TO ORDER  
REPAIR PARTS**

**CRAFTSMAN®**

**5.5 HORSEPOWER  
22" SIDE DISCHARGE  
POWER PROPELLED  
ROTARY LAWN MOWER**

Each lawn mower has its own model number. Each engine has its own model number.

The model number for your lawn mower will be found on a decal attached to the rear of the lawn mower housing.

The model number for your engine will be found on the blower housing of the engine.

All parts listed herein may be ordered from any Sears, Roebuck and Co. Service Center/Department and most Retail Stores.

**WHEN ORDERING REPAIR PARTS, ALWAYS GIVE THE  
FOLLOWING INFORMATION:**

- **PRODUCT - LAWN MOWER**
- **MODEL NUMBER - 917.378590**
- **ENGINE - BRIGGS & STRATTON - MODEL  
NO. 128802, TYPE NO. 0519-21**
- **PART NUMBER**
- **PART DESCRIPTION**

Your Sears merchandise has added value when you consider Sears has service units nationwide staffed with Sears trained technicians... professional technicians specifically trained to insure that we meet our pledge to you, we service what we sell.

141192 08/20/93

Printed in U.S.A.

**Sears, Roebuck and Co., Hoffman Estates, IL 60179 U.S.A.**