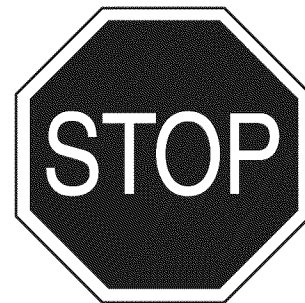


Operator's Manual

CRAFTSMAN®

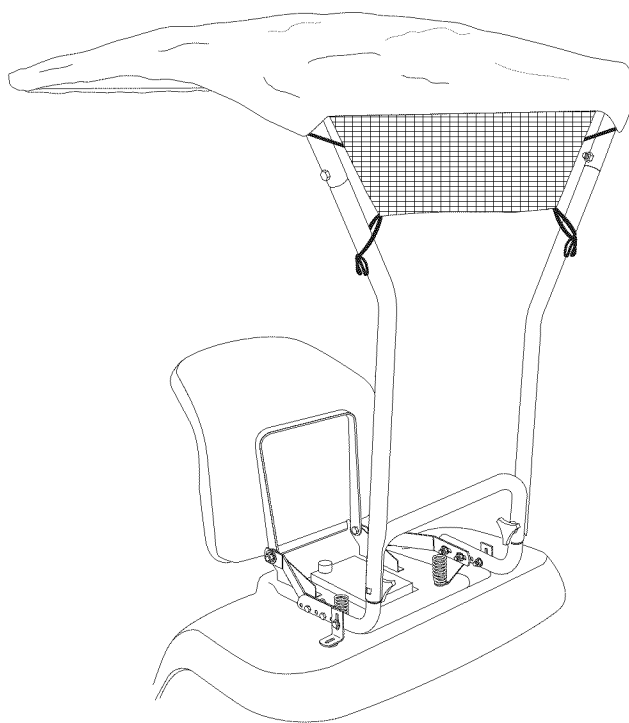


SUN SHADE

Model No. 486.242101

(For Source 247. Tractors)

DO NOT RETURN TO STORE
For Missing Parts or Assembly
Questions Call 1-866-576-8388



CAUTION:

Before using this product, read this manual and follow all Safety Rules and Operating Instructions.

TOOLS NEEDED FOR ASSEMBLY

7/16" Wrenches (2)
1/2" Wrench (2)
5/8" Wrench (1)
1/2" Socket Wrench and Extension (1)

Sears, Roebuck and Co., Hoffman Estates, IL 60179 U.S.A.
www.sears.com/craftsman

PRINTED IN U.S.A.

FORM NO. 41990 (3/21/11)

TABLE OF CONTENTS

SAFETY.....	2	CANOPY INSTALLATION.....	13
WARRANTY.....	2	OPERATION.....	14
CARTON CONTENTS.....	3	MAINTENANCE/STORAGE.....	14
HARDWARE CHART.....	4	REPAIR PARTS LIST.....	15
ASSEMBLY INSTRUCTIONS.....	5	PARTS ORDERING/SERVICE.....	Back Page



SAFETY



Any power equipment can cause injury if operated improperly or if the user does not understand how to operate the equipment. Exercise caution at all times when using power equipment.

- This sun shade does not provide protection against exhaust fumes, collision, rollover or other accidents.
- Read the sun shade and vehicle owner's manuals and know how to operate your vehicle and sun shade before using the sun shade attachment.
- Be sure there is adequate ventilation when using the tractor and sun shade in confined areas.
- The sun shade will restrict your field of vision in some directions. Use extra caution when operating your tractor with the sun shade attached.
- Watch out for low tree limbs or other overhead obstructions that may not previously have interfered with operation of the tractor. The extra height of the sun shade may cause these objects to become obstacles.
- Check the area of operation thoroughly before using the tractor.



Look for this symbol to point out important safety precautions. It means — **Attention!! Become alert!! Your safety is involved.**

WARRANTY

CRAFTSMAN FULL WARRANTY

When operated and maintained according to all supplied instructions, if this Craftsman product fails due to a defect in material or workmanship within one year from the date of purchase, return it to any Sears store or other Craftsman outlet in the United States for free replacement.

This warranty applies for only 90 days from the date of purchase if this product is ever used for commercial or rental purposes.

This warranty does not include items considered to be expendable parts that can wear out from normal use within the warranty period.

This warranty gives you specific legal rights, and you may also have other rights which vary from state to state.

Sears, Roebuck and Co., D817WA, Hoffman Estates, IL 60179

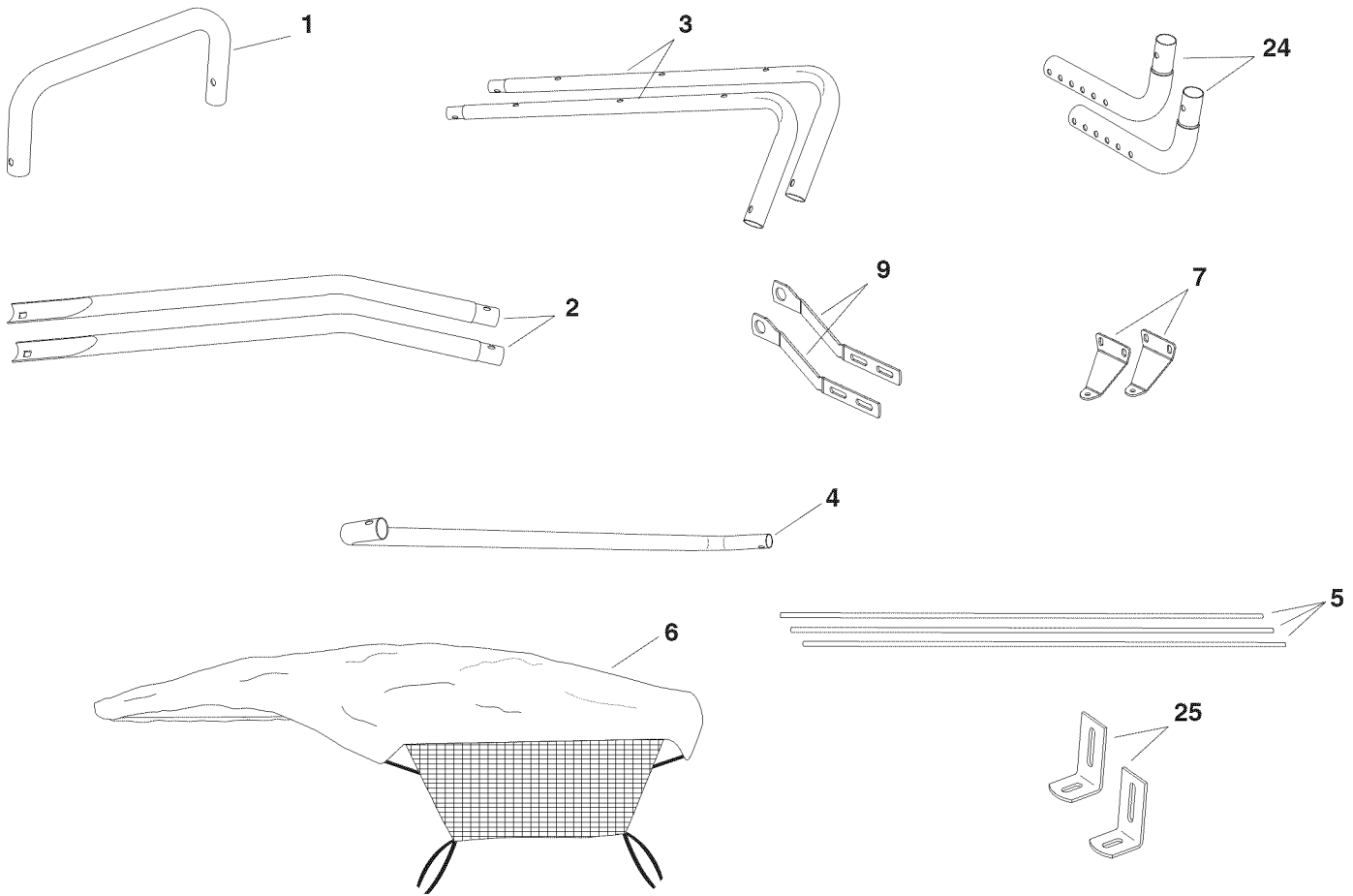
DO NOT RETURN TO STORE for Missing Parts or Assembly Questions

Call 1-866-576-8388 Attachment Hotline

The model number and serial numbers will be found on a decal attached to the base assembly. You should record both the serial number and the date of purchase and keep in a safe place for future reference.

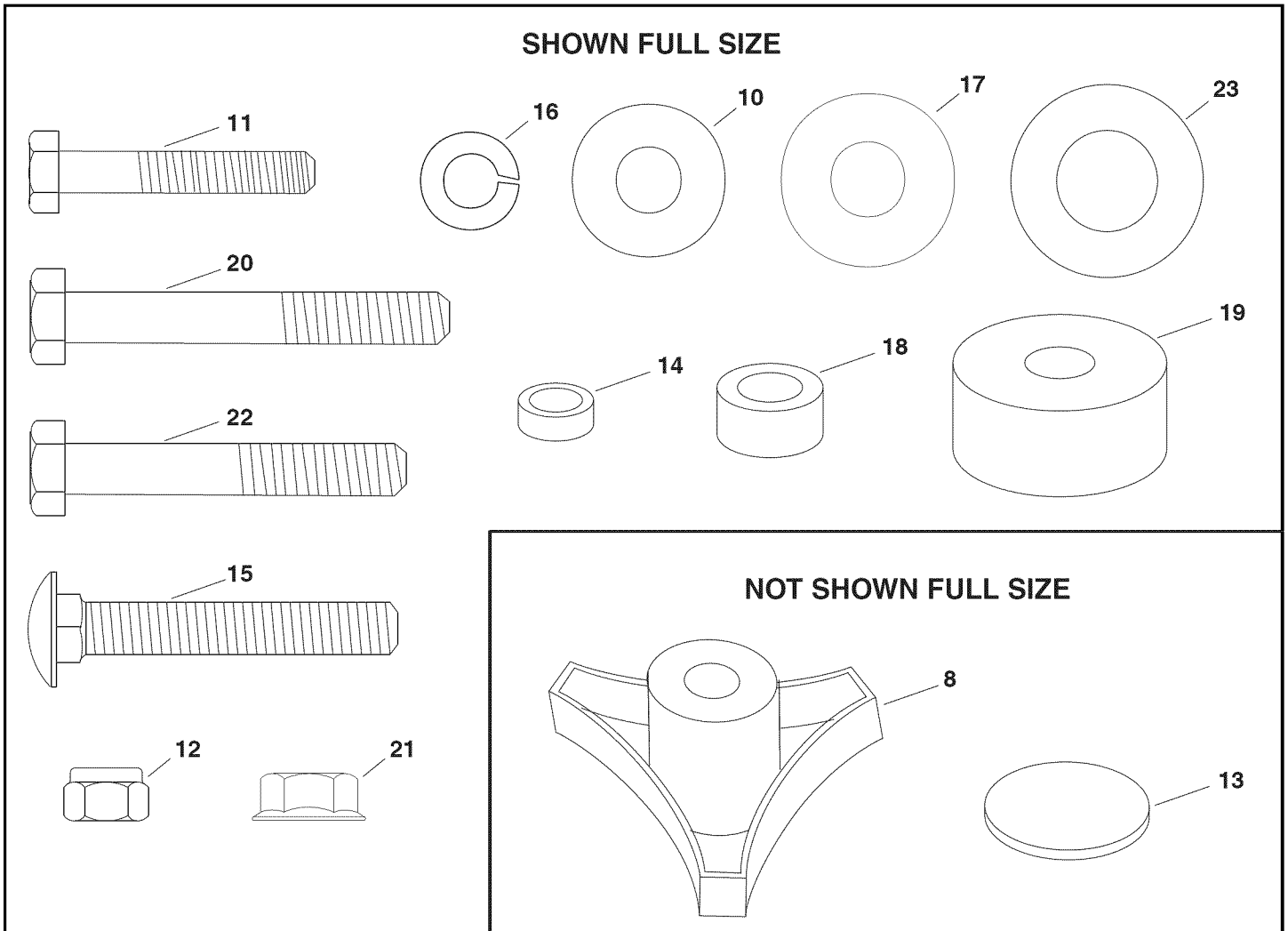
MODEL NUMBER: 486.242101
 SERIAL NUMBER: _____
 DATE OF PURCHASE: _____

CARTON CONTENTS



REF. NO.	PART NO.	QTY.	DESCRIPTION	REF. NO.	PART NO.	QTY.	DESCRIPTION
1	49242	1	Base Top Tube	7	27017	2	Mount Bracket
2	25014	2	Upright Tube	9	27263	2	Support Bracket
3	25013	2	Top Tube	24	49325	2	Base Leg Tube
4	25012	1	U-Tube	25	25304	2	Rear Base Support Bracket
5	25015	3	Support Rod				Hardware Pack (see page 4)
6	48660	1	Vinyl Canopy				

HARDWARE CHART



REF. NO.	PART NO.	QTY.	DESCRIPTION	REF. NO.	PART NO.	QTY.	DESCRIPTION
8	43720	2	Plastic Knob	17	43070	2	Washer, 3/8"
10	43081	6	Flat Washer, 5/16"	18	23625	4	Spacer, .38 ID x .62 OD x .27 L
11	43648	4	Hex Bolt, 1/4-20 x 1-1/2"	19	44911	2	Spacer, .41 ID x 1.25 OD x .5 L
12	47189	4	Nylock Nut, 1/4-20	20	43224	4	Hex Bolt, 5/16-18 x 2-1/4"
13	48661	4	Adhesive Pad	21	46584	6	Hex Nut, 5/16-18 Whiz Lock
14	25357	2	Spacer, .31 ID x .44 OD x .14 L.	22	44180	4	Hex Bolt, 5/16-18 x 2"
15	44977	2	Carriage Bolt, 5/16-18 x 2"	23	41370	2	Washer, .59 ID x 1.125 OD
16	43086	2	Lock Washer, 5/16"				

NOTE: Not all of the supplied parts and hardware will be needed for one particular tractor. Unneeded items may be discarded after assembly has been completed.

NOTE: Most fasteners are readily available through any hardware store.

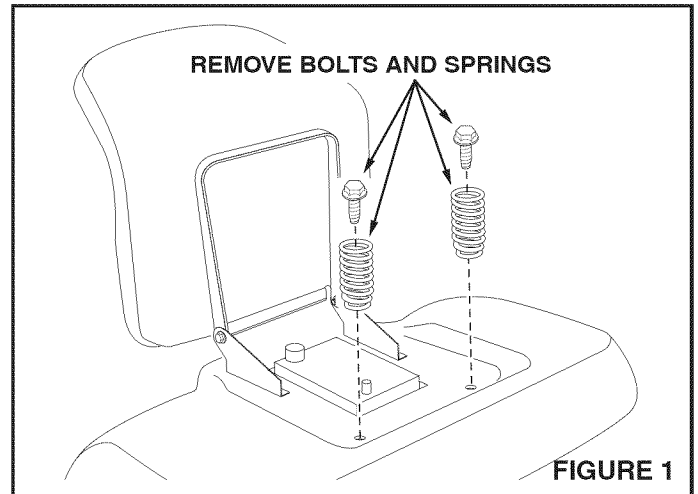
ASSEMBLY INSTRUCTIONS FOR (LT) LAWN TRACTORS

Skip to page 10 if you have a (YT) Yard Tractor or a (GT) Garden Tractor.

FOR TRACTORS WITH A SEAT ADJUSTMENT KNOB UNDERNEATH THE SEAT: Skip to page 8 if there is an adjustment lever on the side of the seat.

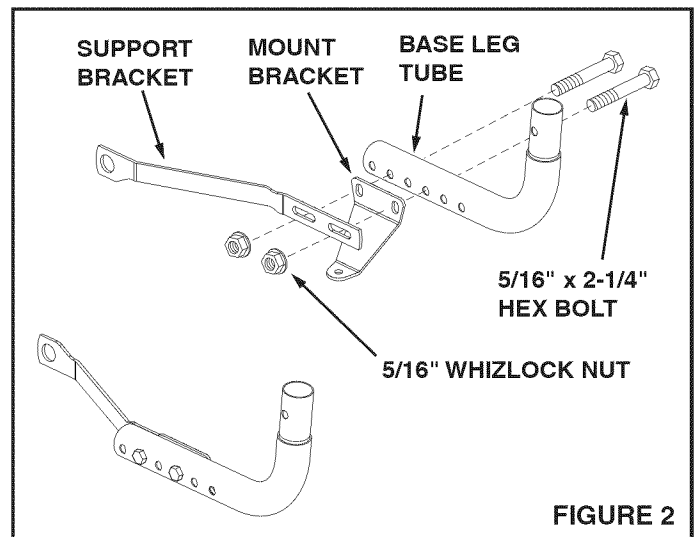
STEP 1: (Figure 1)

Raise the tractor seat and remove the seat springs and bolts.



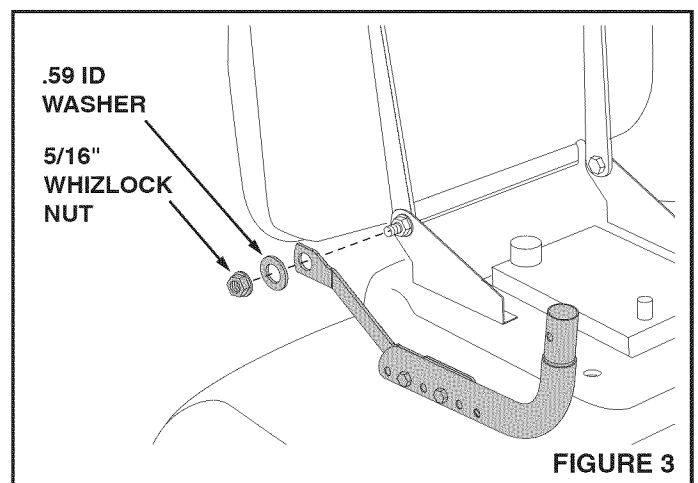
STEP 2: (Figure 2)

Loosely fasten together two sets of mount brackets, support brackets and base leg tubes. **Do not tighten yet.**



STEP 3: (Figure 3)

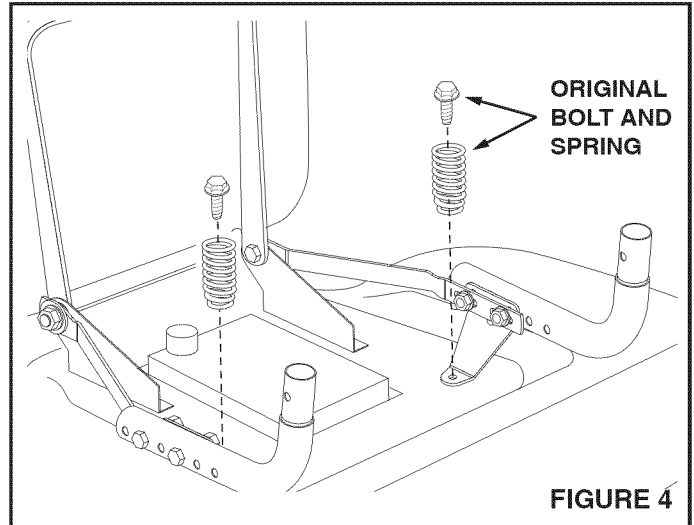
Attach the support brackets to the bolts and nuts in the seat brackets. **Tighten.**



ASSEMBLY INSTRUCTIONS FOR (LT) LAWN TRACTORS

STEP 4: (Figure 4)

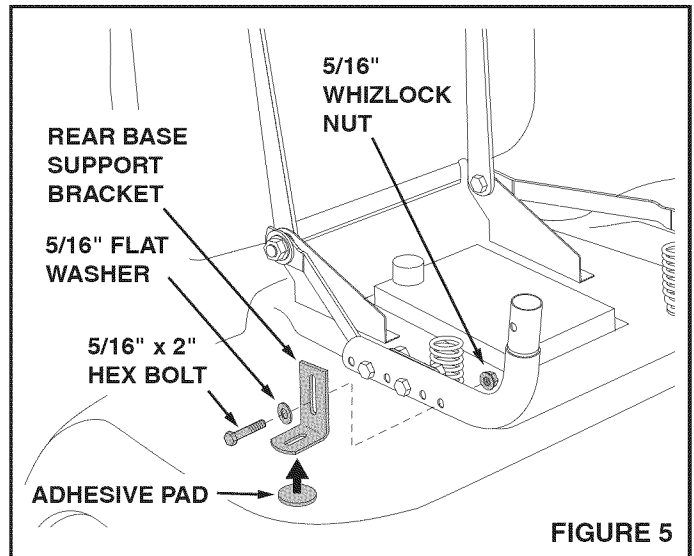
Loosely attach the seat springs and the mount brackets to the rear fender using the original bolts. **Do not tighten yet.**



STEP 5: (Figure 5)

Attach an adhesive pad to the bottom of each rear base support bracket.

Loosely attach a rear base support bracket to the outside of each base leg tube. **Do not tighten yet.**

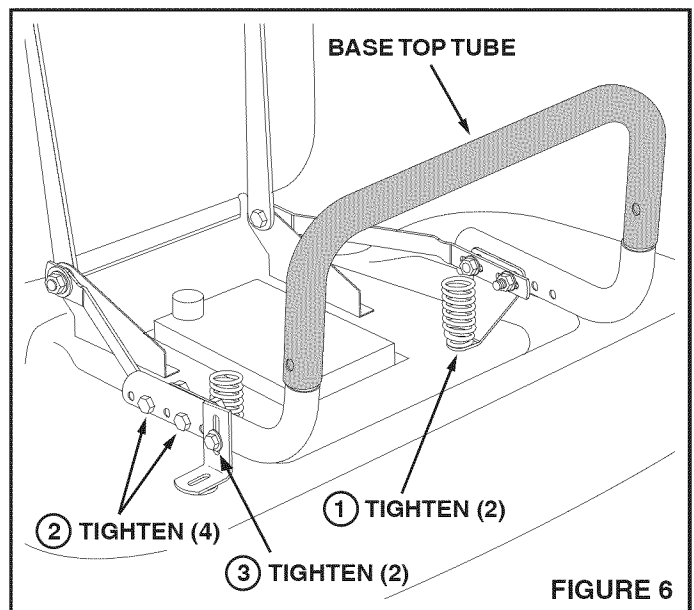


STEP 6: (Figure 6)

Assemble the base top tube onto the base leg tubes.

STEP 7: Tighten all loose bolts and nuts.

PROCEED TO PAGE 13



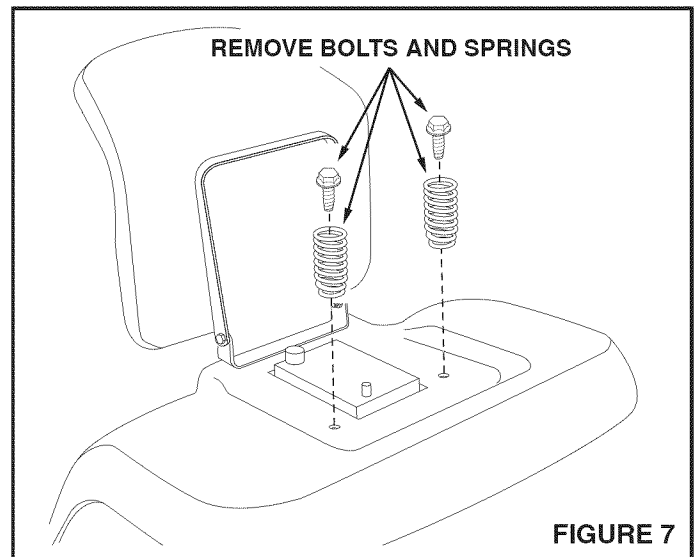
ASSEMBLY INSTRUCTIONS FOR (LT) LAWN TRACTORS

FOR TRACTORS WITH A SEAT ADJUSTMENT LEVER ON THE SIDE OF THE SEAT:

Go back to page 5 if there is a seat adjustment knob underneath the seat.

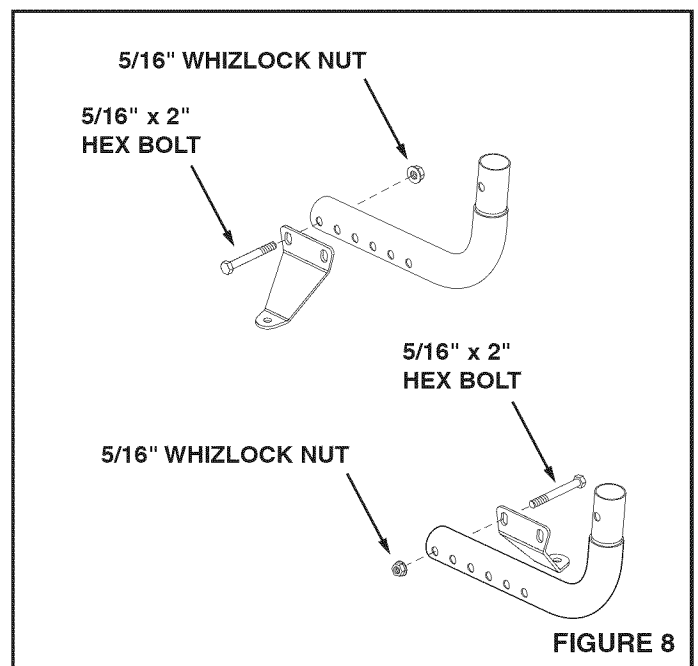
STEP 1: (Figure 7)

Raise the tractor seat and remove the seat springs and bolts.



STEP 2: (Figure 8)

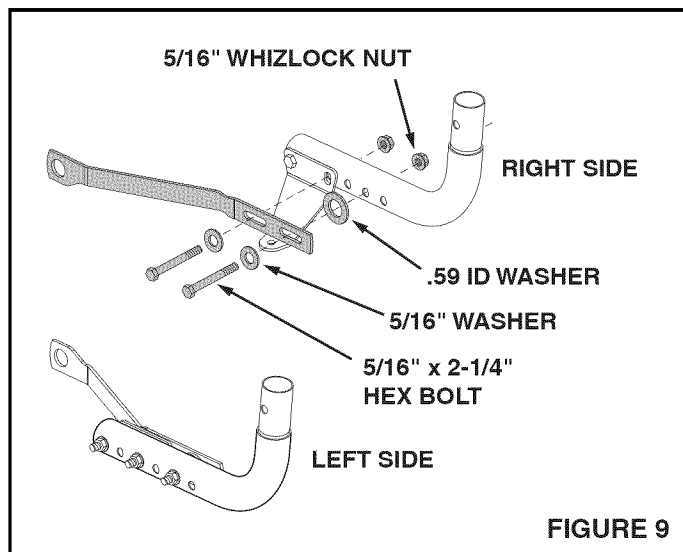
Loosely attach a mount bracket to each base leg tube using one bolt and nut. **Do not tighten yet.**



ASSEMBLY INSTRUCTIONS FOR (LT) LAWN TRACTORS

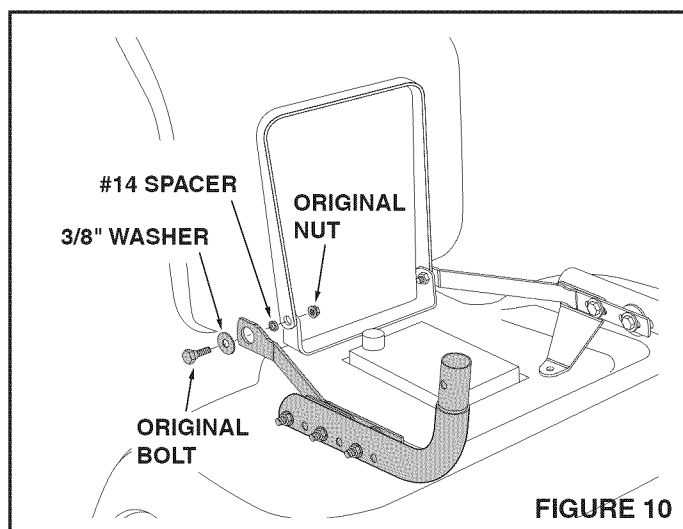
STEP 3: (Figure 9)

Loosely attach a support bracket to each assembled mount bracket and base leg tube. **Do not tighten yet.**



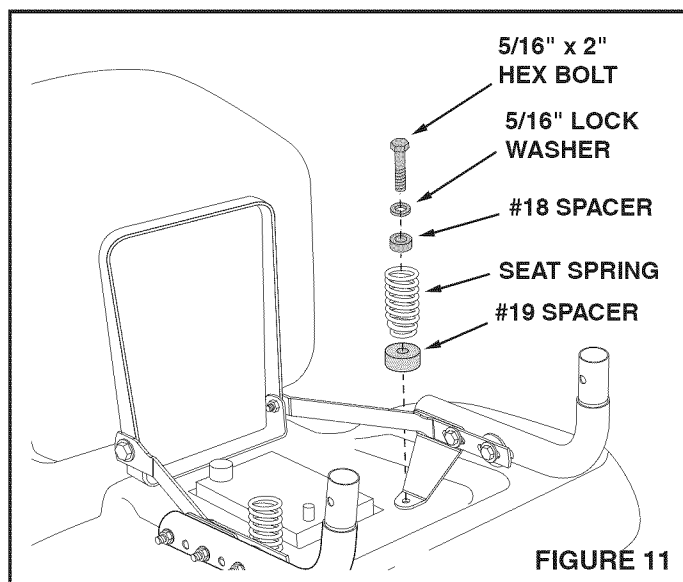
STEP 4: (Figure 10)

Attach the support brackets to the bolts and nuts in the seat brackets. **Tighten.**



STEP 5: (Figure 11)

Loosely attach the seat springs to the mount brackets and the rear fender. **Do not tighten yet.**

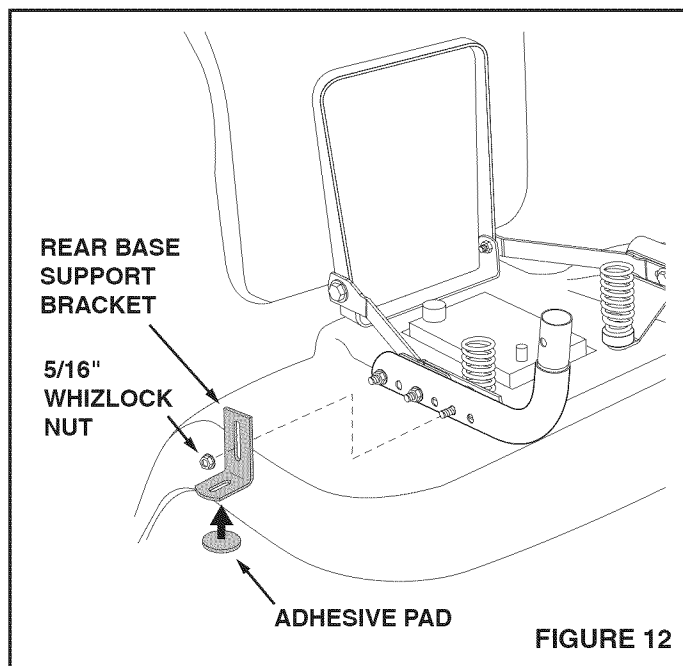


ASSEMBLY INSTRUCTIONS FOR (LT) LAWN TRACTORS

STEP 6: (Figure 12)

Attach an adhesive pad to the bottom of each rear base support bracket.

Remove the nut from the rear bolt in each base support tube. Use the nut to loosely attach a rear base support bracket to the outside of each base leg tube. Push the bracket down against the fender. **Do not tighten yet.**

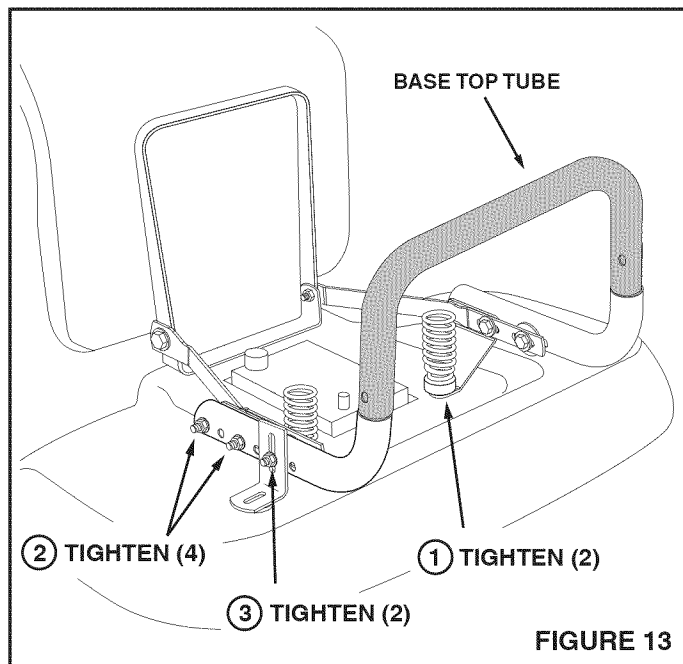


STEP 7: (Figure 13)

Assemble the base top tube onto the base leg tubes.

STEP 8: Tighten all loose bolts and nuts.

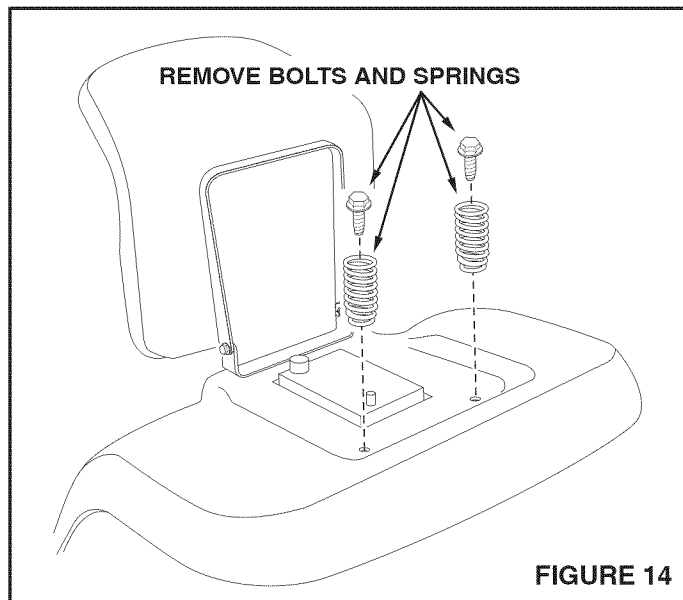
PROCEED TO PAGE 13



ASSEMBLY INSTRUCTIONS FOR (YT) YARD TRACTORS AND (GT) GARDEN TRACTORS

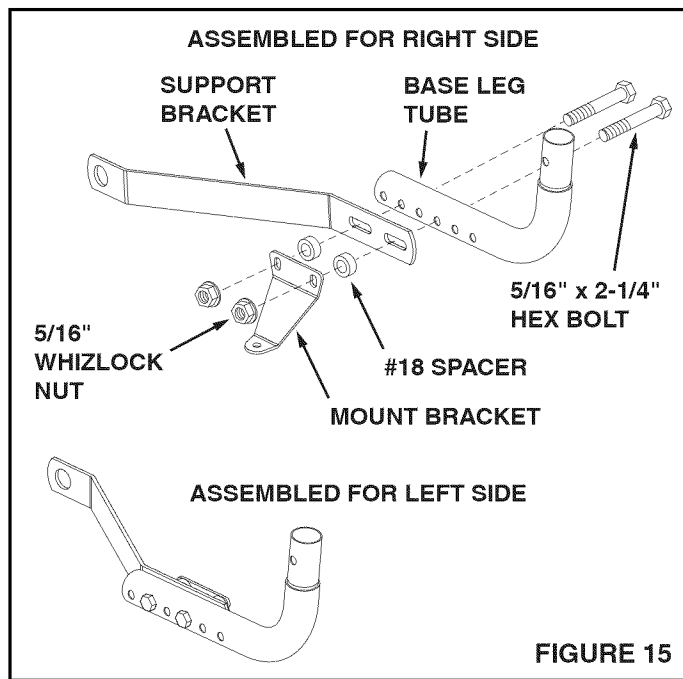
STEP 1: (Figure 14)

Raise the tractor seat and remove the springs from the rear fender. The original bolts can be stored, they will not be used with the sun shade.



STEP 2: (Figure 15)

Loosely fasten together two sets of mount brackets, #18 spacers, support brackets and base leg tubes. **Do not tighten yet.**



ASSEMBLY INSTRUCTIONS FOR (YT) YARD TRACTORS AND (GT) GARDEN TRACTORS

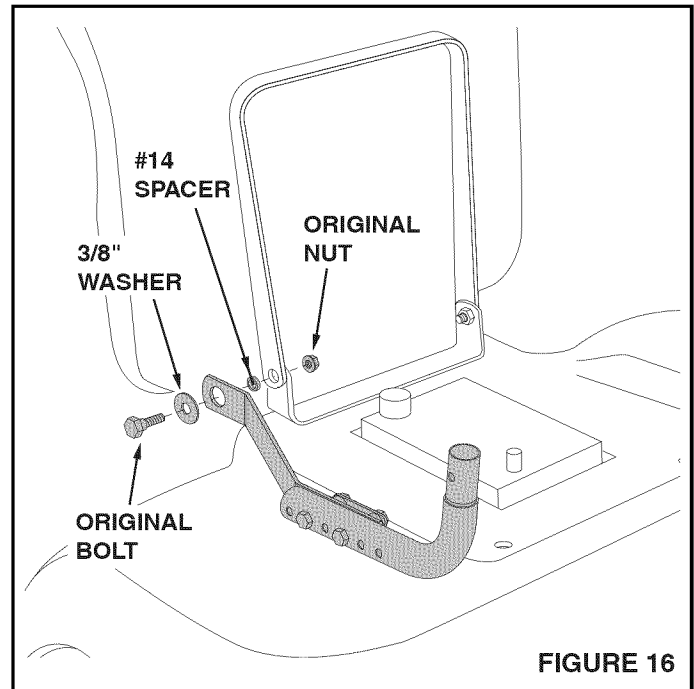
STEP 3: (Figure 16)

Remove the original bolt and nut from only one side of the seat bracket.

Insert a small spacer into the empty hole in the seat bracket.

Attach the end of an assembled support bracket to the seat bracket. **Tighten.**

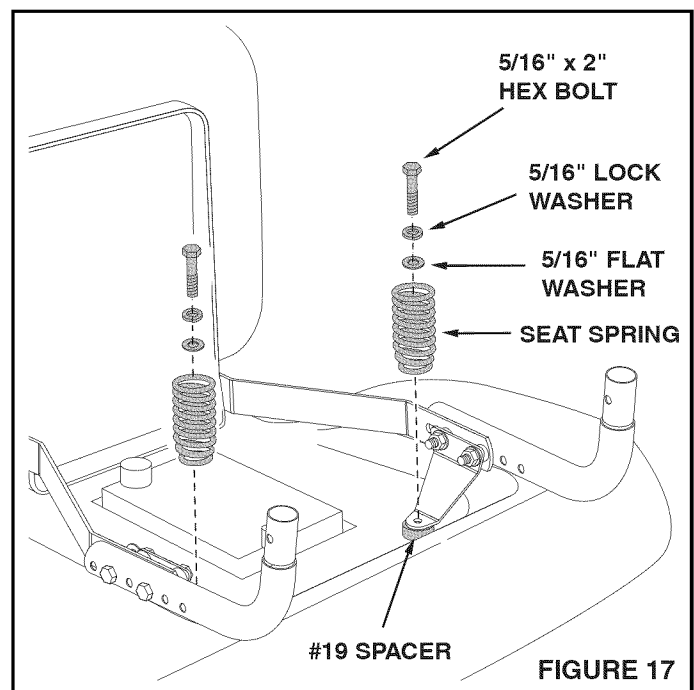
Repeat this step for other side of seat bracket.



STEP 4: (Figure 17)

Place a large spacer over each spring mount hole in the fender.

Place the assembled mount brackets and the springs on top of the spacers. Loosely attach them to the fender. **Do not tighten yet.**



ASSEMBLY INSTRUCTIONS FOR (YT) YARD TRACTORS AND (GT) GARDEN TRACTORS

STEP 5: (Figure 18)

Attach an adhesive pad to the bottom of each rear base support bracket.

Loosely attach a rear base support bracket to the outside of each base leg tube. **Do not tighten yet.**

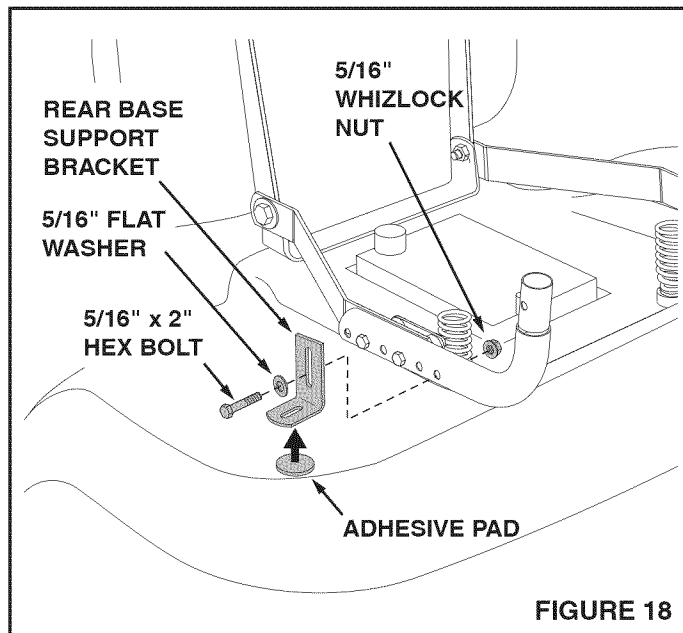


FIGURE 18

STEP 6: (Figure 19)

Assemble the base top tube onto the base leg tubes.

STEP 7: Tighten all loose bolts and nuts.

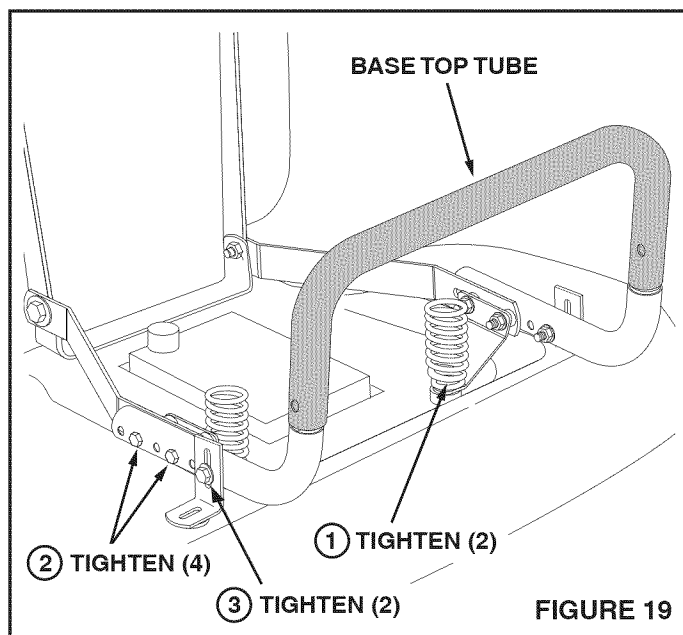


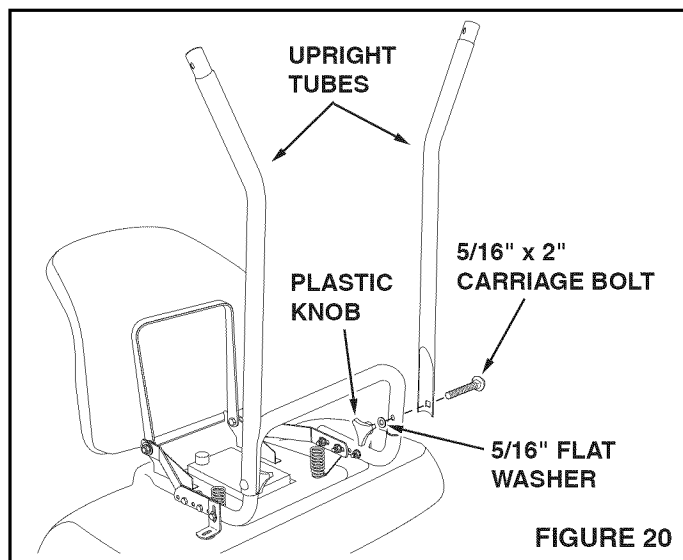
FIGURE 19

CANOPY INSTALLATION FOR ALL TRACTORS

STEP 1: (Figure 20)

Assemble the upright tubes to the base assembly.

NOTE: If holes are difficult to align, loosen bolts attaching base leg tubes to mounting bracket(s). If hole alignment is still difficult, loosen bolts attaching mounting bracket to rear fender. Retighten all bolts when finished.



STEP 2: (Figure 21)

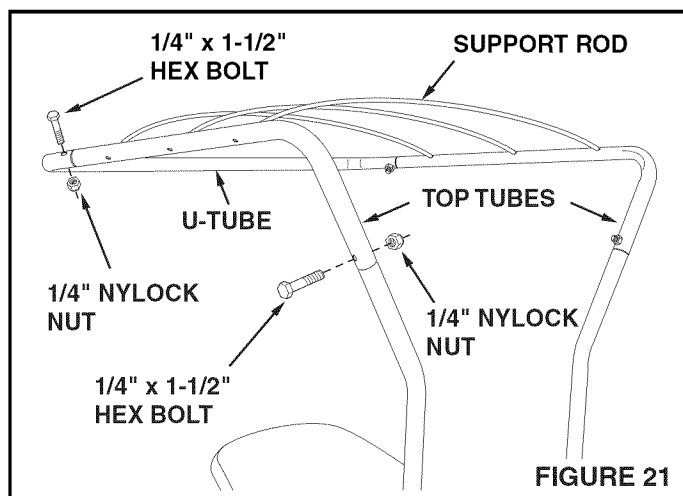
Assemble the top tubes to the upright tubes. **Do not tighten yet.**

STEP 3: (Figure 21)

Fit the front U-tube onto the top tubes. Fasten the tubes together. **Tighten all** loose bolts and nuts.

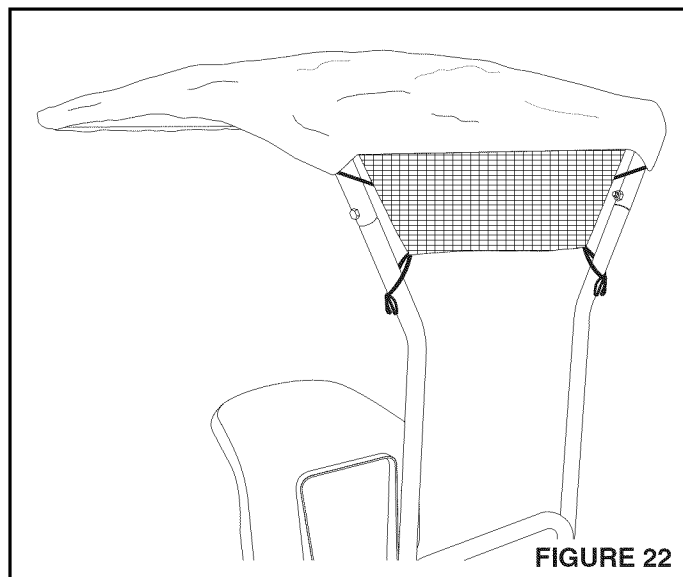
STEP 4: (Figure 21)

Fit the three support rods into the holes in the top tubes, with the rods arching upward. **Do not** over-bend the rods when installing.



STEP 5: (Figure 22)

Place the vinyl canopy on top of the tubing frame, fitting the front of the vinyl canopy around the front U-tube. Secure the nylon mesh to the upright tubes using the ties located on the corners of the mesh.



CAUTION: Make sure tractor seat raises and lowers freely after attaching Sun Shade. The tractor's operator presence safety switch will not operate if seat is stuck down.

OPERATION

Read this owner's manual and safety rules before operating your tractor with the sun shade.



CAUTION: This sun shade does not provide protection against exhaust fumes, collision, rollover or other accidents.

Check the area of operation thoroughly before using the tractor with the sun shade. The added height of the sun shade and a reduced field of vision require extra caution during operation.



CAUTION: **Watch out** for low tree limbs and other overhead objects which may interfere with the sun shade.

Remove the upper sun shade frame and canopy before you transport the tractor in an open truck or open trailer.



CAUTION: **Never** transport the tractor in an open truck or open trailer while the sun shade is attached.

MAINTENANCE/STORAGE

CUSTOMER RESPONSIBILITIES

Read and follow the maintenance schedule and the maintenance procedures listed in this section.

MAINTENANCE SCHEDULE Fill in dates as you complete regular service.	Before each use After each use Every season Before storage				Service Dates											
Check for loose fasteners	X															
Cleaning		X		X												

CHECK FOR LOOSE FASTENERS

Before each use make a thorough visual check of the sun shade for any bolts and nuts which may have loosened. Retighten any loose bolts and nuts.

STORAGE

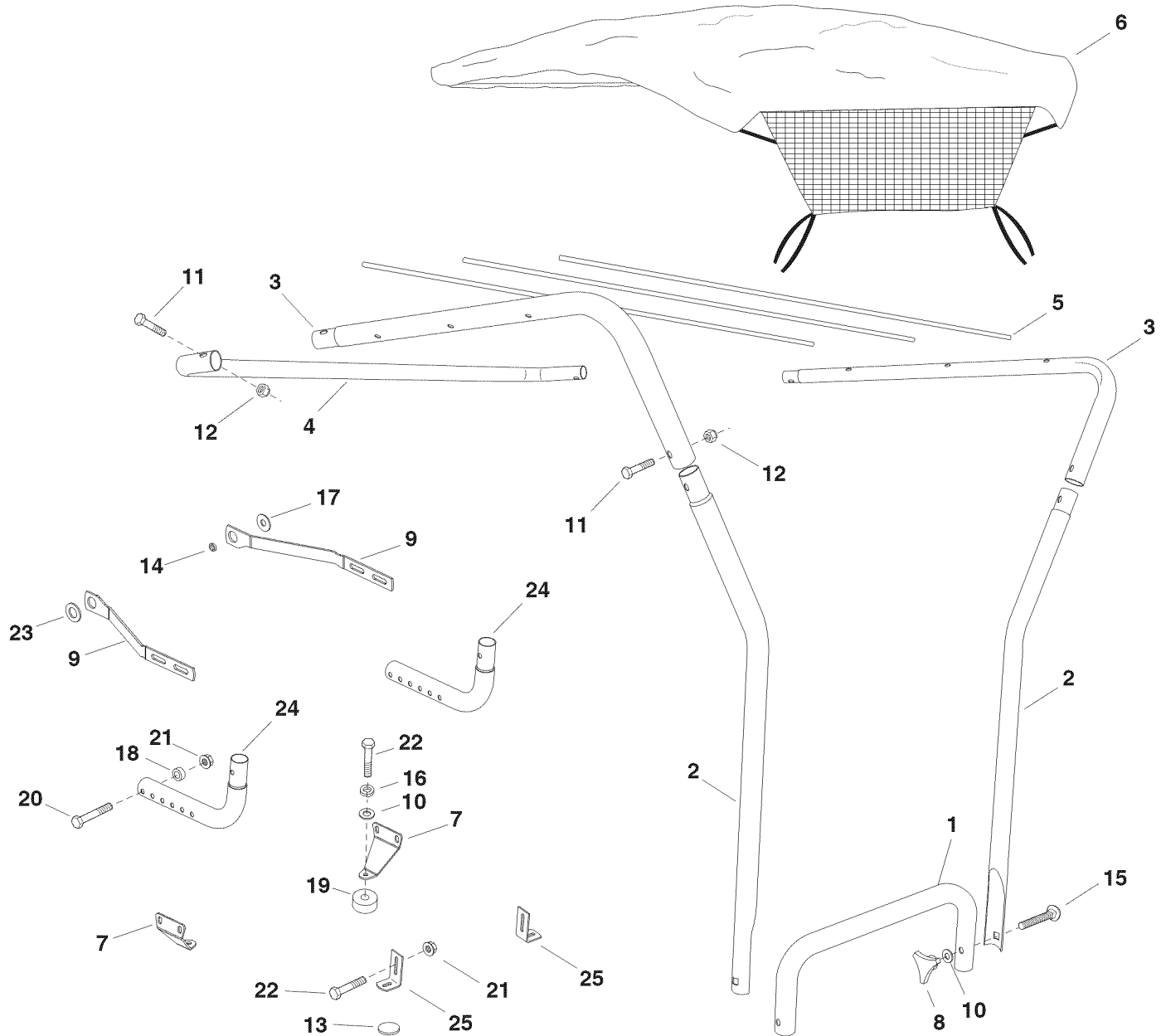
Clean the vinyl canopy thoroughly with mild liquid soap and water. Allow to dry before storing.

Store the sun shade in a clean, dry area away from direct sun light.

CLEANING

Wipe loose dirt and debris from the vinyl canopy after each use. The vinyl canopy can be washed using mild liquid soap and water.

REPAIR PARTS FOR MODEL 71-242101 SUN SHADE



REF. NO.	PART NO.	QTY.	DESCRIPTION	REF. NO.	PART NO.	QTY.	DESCRIPTION
1	49242	1	Base Top Tube	14	25357	2	Spacer, .31 ID x .44 OD x .14 L.
2	25014	2	Upright Tube	15	44977	2	Carriage Bolt, 5/16-18 x 2"
3	25013	2	Top Tube	16	43086	2	Lock Washer, 5/16"
4	25012	1	U-Tube	17	43070	2	Washer, 3/8"
5	25015	3	Support Rod	18	23625	4	Spacer, .38 ID x .62 OD x .27 L
6	48660	1	Vinyl Canopy	19	44911	2	Spacer, .41 ID x 1.25 OD x .5 L
7	27017	2	Mount Bracket	20	43224	4	Hex Bolt, 5/16-18 x 2-1/4"
8	43720	2	Plastic Knob	21	46584	6	Hex Nut, 5/16-18 Whiz Lock
9	27263	2	Support Bracket	22	44180	4	Hex Bolt, 5/16-18 x 2"
10	43081	4	Flat Washer, 5/16"	23	41370	2	Washer, .59 ID x 1.125 OD
11	43648	4	Hex Bolt, 1/4-20 x 1-1/2"	24	49325	2	Base Leg Tube
12	47189	4	Nylock Nut, 1/4-20	25	25304	2	Rear Base Support Bracket
13	48661	4	Adhesive Pad		41990	1	Owner's Manual

NOTE: Most fasteners are readily available through any hardware store.

Get it fixed, at your home or ours!

Your Home

For expert troubleshooting and home solutions advice:

manage my home

www.managemyhome.com

For repair – **in your home** – of **all** major brand appliances, lawn and garden equipment, or heating and cooling systems, **no matter who made it, no matter who sold it!**

For the replacement parts, accessories and owner's manuals that you need to do-it-yourself.

For Sears professional installation of home appliances and items like garage door openers and water heaters.

1-800-4-MY-HOME® (1-800-469-4663)

Call anytime, day or night (U.S.A. and Canada)

www.sears.com

www.sears.ca

Our Home

For repair of carry-in items like vacuums, lawn equipment, and electronics, call anytime for the location of your nearest

Sears Parts & Repair Service Center

1-800-488-1222 (U.S.A.)

www.sears.com

1-800-469-4663 (Canada)

www.sears.ca

To purchase a protection agreement on a product serviced by Sears:

1-800-827-6655 (U.S.A.)

1-800-361-6665 (Canada)

Para pedir servicio de reparación a domicilio, y para ordenar piezas:

1-888-SU-HOGAR®

(1-888-784-6427)

Au Canada pour service en français:

1-800-LE-FOYER^{MC}

(1-800-533-6937)

www.sears.ca

Sears

® Registered Trademark / TM Trademark / SM Service Mark of Sears Brands, LLC

® Marca Registrada / TM Marca de Fábrica / SM Marca de Servicio de Sears Brands, LLC

^{MC} Marque de commerce / ^{MD} Marque déposée de Sears Brands, LLC

© Sears Brands, LLC