

Owner's Manual

2000 Watt Generator



WARNING! To Reduce The Risk Of Injury, User Must Read And Understand Instruction Manual.

FOR SERVICE CALL: 888-896-6881
PARA SERVICIO LLAME: 888-896-6881

SP-GG200

www.steele-products.com

DANGER **Carbon Monoxide**

Using a generator indoors WILL KILL YOU IN MINUTES.

Carbon Monoxide

Generator exhaust contains high levels of carbon monoxide (CO), a poisonous gas you cannot see or smell. If you can smell the generator exhaust, you are breathing CO. But even if you cannot smell the exhaust, you could be breathing CO.

- NEVER use a generator inside homes, garages, crawlspaces, or other partly enclosed areas. Deadly levels of carbon monoxide can build up in these areas. Using a fan or opening windows and doors does NOT supply enough fresh air.
- ONLY use a generator outdoors and far away from open windows, doors, and vents. These openings can pull in generator exhaust.

Even when you use a generator correctly, CO may leak into the home. ALWAYS use a battery-powered or battery-backup CO alarm in the home.

If you start to feel sick, dizzy, or weak after the generator has been running, move to fresh air RIGHT AWAY. See a doctor. You could have carbon monoxide poisoning.

GASOLINE GENERATOR

CONTENTS

1. SAFETY PRECAUTIONS	2
2. CONTROL FUNCTION	4
3. PRE-OPERATION CHECKS	6
4. OPERATION	7
5. OIL SENSER	10
6. PERIODIC MAINTENANCE	11
7. TROUBLE SHOOTING	14
8. STORAGE	15
9. SPECIFICATIONS	16
10. WIRING DIAGRAM	17
11. PARTS LIST	19

GASOLINE GENERATOR INSTRUCTOR

WARNING:

PLEASE READ AND UNDERSTAND THIS MANUAL COMPLETELY BEFORE OPERATING

1. SAFETY PRECAUTIONS

1) EXHAUST FUMES ARE POISONOUS

- Never operate the machine in a closed area or it may cause unconsciousness and death within a short time. Operate the engine in a well ventilated area.

2) FUEL IS HIGHLY FLAMMABLE AND POISONOUS

- Always turn off the engine when refueling.
Never refuel while smoking or in the vicinity of an open flame.
Take care not to spill any fuel on the engine or muffler when refueling.
- If you swallow any fuel, inhale fuel vapor, or allow any to get in your eyes, see your doctor immediately. If any fuel spills on your skin or clothing, immediately wash with soap and water and change your clothes.
- When operating or transporting the machine, be sure it is kept upright. If it tilts, fuel may leak from the carburetor or fuel tank.

3) ENGINE AND MUFFLER MAY BE HOT

- Put the machine in a place where pedestrians or children are not likely to touch the machine.
- Avoid placing any flammable materials near the exhaust outlet during operation.

GASOLINE GENERATOR INSTRUCTOR

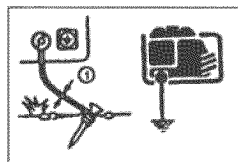
- Keep the machine away at least 1 m (3 ft) from buildings or other equipment, or the engine may overheat.
- Avoid operating the engine with a dust cover.

4) ELECTRIC SHOCK PREVENTION

- Never operate the engine in rain or snow.
- Never touch the machine with wet hands or electrical shock will occur.
- Be sure to ground (earth) the generator.

NOTE:

- Use ground (earth) lead of sufficient current capacity. Ground (earth) lead
Diameter: 0.12mm (0.005 in)



- Some types of generators have no ground bolts, so do not operate the machine in rain or snow !

While the machine is operating, don't touch it with wet hands!

5) CONNECTION NOTES

- Avoid connecting the generator to commercial power outlet.
- Avoid connecting the generator in parallel with any other generator.

6) BATTERY

- No smoking while handling the battery.
- The battery emits flammable hydrogen gas, which can explode if exposed to electric arcing or open flame.

GASOLINE GENERATOR INSTRUCTOR

- Keep the area well-ventilated and keep open flames/sparks away when handling the battery.

2. CONTROL FUNCTION

1) ENGINE SWITCH

The engine switch controls the ignition System.

- ☐ “ON” (run)

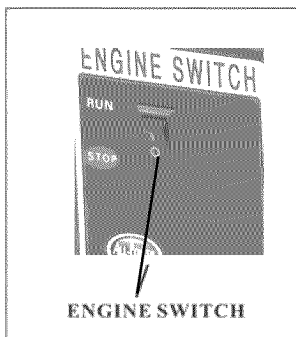
Ignition circuit is switched on.

The engine can be started.

- ☐ “OFF”(stop)

Ignition circuit is switched off.

The engine will not run.

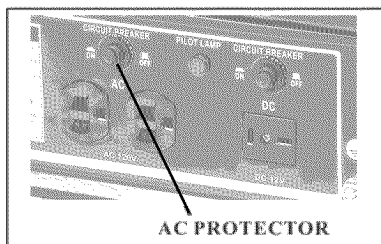


2) AC AND DC PROTECTOR

The AC or DC breaker turns off automatically when the load exceeds the generator rated output.

CAUTION:

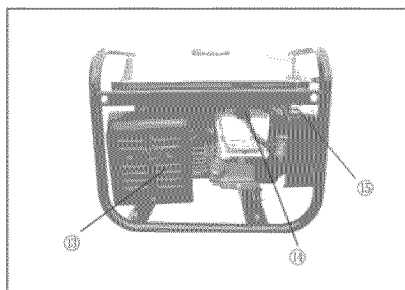
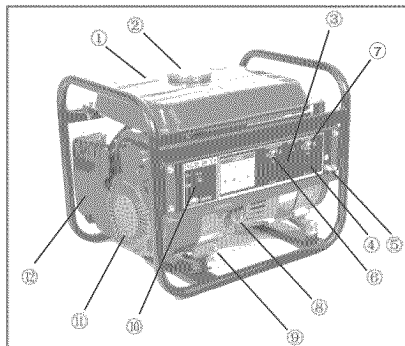
Reduce the load to within specified generator rated output if the protector turn off!



GASOLINE GENERATOR INSTRUCTOR

COMPONENTS

- (1) Fuel tank
- (2) Fuel tank cap
- (3) AC socket
- (4) DC socket
- (5) Ground terminal
- (6) AC protector
- (7) DC protector
- (8) Oil filter cap
- (9) Oil drain plug
- (10) Engine switch
- (11) Starter
- (12) Air filter cover
- (13) Muffler
- (14) Spark plug
- (15) Choke lever



GASOLINE GENERATOR INSTRUCTOR

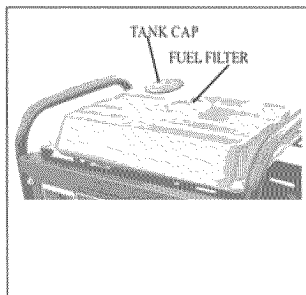
3. PRE-OPERATION CHECKS

NOTE:

Pre-operation checks should be made each time the generator is used.

1) CHECK ENGINE FUEL

- Check fuel level with the tank cap removed.
- If fuel level is low, refill with unleaded automotive gasoline.
- Be sure to use the fuel filter on the fuel filter neck.
- Recommended fuel: Unleaded gasoline.

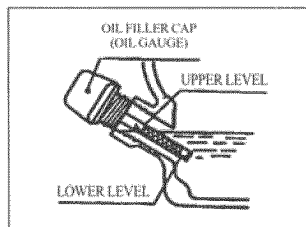


WARNING:

- Do not refill tank while engine is running or hot.
 - Close fuel cock before refueling with fuel.
 - Be careful not to admit dust, dirt, water or other foreign objects into fuel.
 - Wipe off spilt fuel thoroughly before starting engine.
 - Keep open flames away.
-

2) CHECK ENGINE OIL

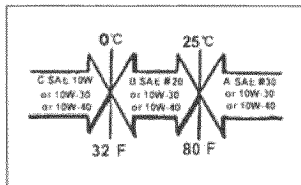
- Before checking or refilling oil, be sure the generator is put on a stable and level surface with engine stopped.
- Fuel level is below the lower level line, refill with suitable oil to upper level



GASOLINE GENERATOR INSTRUCTOR

line. Do not screw in the oil filler cap when checking oil level.

- Recommended engine oil: SAE 30
10W-30



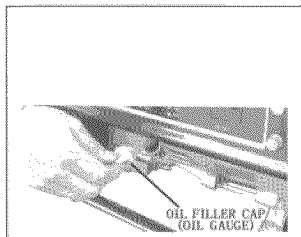
3) GROUND (Earth)

Make sure to ground (earth) the generator.

4. OPERATION

NOTE:

The generator has been shipped without engine oil. Fill with oil or it will not start.



WARNING:

Before starting the machine, you must check the oil level, or the engine can be damaged!

1) STARTING THE ENGINE

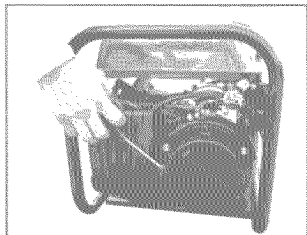
NOTE:

- Before starting the engine, do not connect the electric apparatus to the generator.

1. Turn the fuel cock to "ON" .
2. Turn the engine switch to "ON" .

GASOLINE GENERATOR INSTRUCTOR

3. Turn the choke level to the “|●|” position. Not necessary if the engine is warm.
4. Pull the starter handle slowly until resistance is felt. This is the compression point. Return the handle to its original position and pull swiftly. Do not fully pull out the rope. After starting, allow the starter handle to return to its original position while still holding the handle.
5. Warm up the engine.
6. Turn the choke level back to the operating position.
7. Warm up the engine without a load for a few minutes.



2) USING ELECTRIC POWER

1. AC PROTECTOR

- (a) Check the voltmeter or pilot lamp for proper voltage. (Some machines or not equipped with these features.)
- (b) Turn off the switch(s) of the electrical appliance(s) before connecting to the generator.
- (c) Insert the plug(s) of the electrical appliance(s) into the receptacle.

CAUTION:

- Be sure the electric apparatus is turned off before plugging in.
 - Be sure the total load is within generator rated output.
 - Be sure the socket load current is within socket rated current.
-

GASOLINE GENERATOR INSTRUCTOR

NOTE:

When the circuit breaker or no-fuse breaker turns off during operation, the generator is overloaded or the appliance is defective.

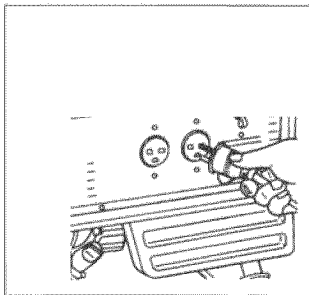
2. BATTERY CHARGING SOCKET (OPTION)

CAUTION:

1. This socket may be used for charging 12 V/8.3A batteries only.
 2. When charging , connect the charging cables to the battery terminals and then to the DC battery charging socket of the generator.
 3. The leads must be connected making sure of the (+) and (-) polarity.
-

3) STOPPING THE ENGINE

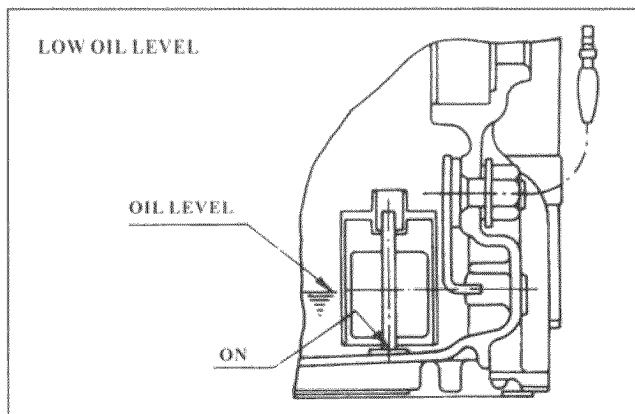
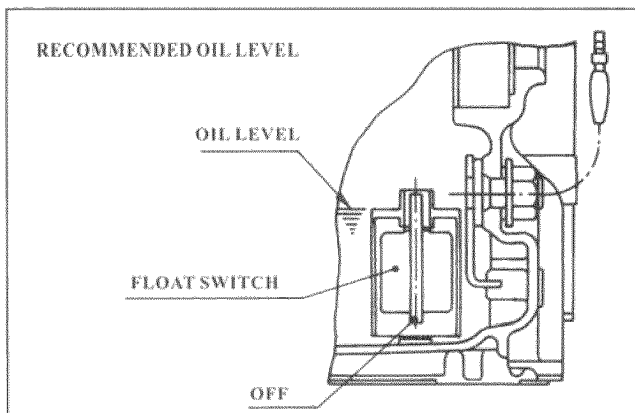
1. Turn off the power switch of the electric apparatus or unplug the cord from receptacle of the generator.
2. Turn the engine switch to "OFF" .
3. Turn the fuel cock lever to "OFF" .



GASOLINE GENERATOR INSTRUCTOR

5. OIL SENSOR

- The oil sensor detects the fall in oil in the crankcase and automatically stops the engine when the oil level falls down below the safety limit.
- When the engine stops automatically, check the oil level.
- If the engine can not start by usual starting procedures, check the oil level.



GASOLINE GENERATOR INSTRUCTOR

6. PERIODIC MAINTENANCE

1) MAINTENANCE CHART

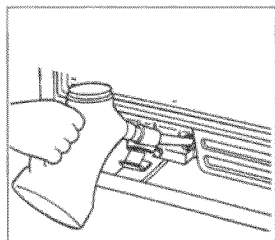
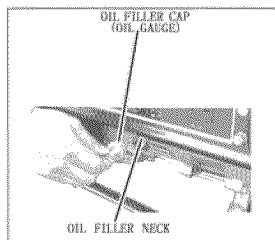
Regular maintenance is most important for the best performance and safe operation.

Item	Remarks	Per-operation check (daily)	Initial 1 months or 20 H	Every 3 months or 50 Hr	Every 6 months or 100Hr	Every 12 months or 300Hr
Spark Plug	Check condition adjust gap and clean. Replace if necessary.	●		●		
Engine Oil	Check oil level	●				
	Replace		●	●		
Air Filter	clean. Replace if necessary.			●		
Fuel Filter	Clean fuel cock filter. Replace if necessary.				●	
Valve Clearance	Check and adjust when engine is cold.					●
Fuel Line	Check fuel hose for crack or damage. Replace if necessary.	●				
Exhaust System	Check for leakage. Retighten or replace gasket if necessary.	●				
Carburetor	Check choke operation.				●	
Cooling system	Check for damage.					●
Starting system	Check recoil starter operation.	●				
Decarbonization	More frequently if necessary.					●
Fittings / Fasteners	Check all fittings and fasteners correct if necessary.				●	

GASOLINE GENERATOR INSTRUCTOR

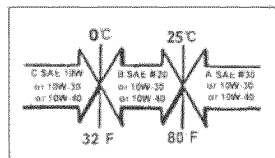
2) ENGINE OIL REPLACEMENT

1. Place the machine on a level surface and warm up the engine for several minutes. Then stop the engine.
2. Remove the oil filler cap.
3. Place an oil pan under the engine. Remove the oil drain plug so that the oil can be completely drained.
4. Check the oil drain plug, gasket, oil filler cap and O-ring. If damaged replace.
5. Add engine oil to the upper level.
6. Reinstall the oil drain plug.



CAUTION:

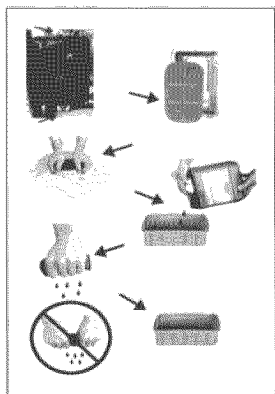
Be sure no foreign material enters the crankcase.



3) AIR FILTER

Maintaining an air cleaner in proper condition is very important. Dirt induced through improperly installed, improperly serviced, or inadequate elements damages and wears out engines. Keep the element always clean.

1. Take out the air cleaner, clean it well in kerosene and dry it.



GASOLINE GENERATOR INSTRUCTOR

2. After wetting the element by clean engine oil, squeeze it tight by hand.
3. Lastly, put the element in the case and install it securely.

CAUTION: _____

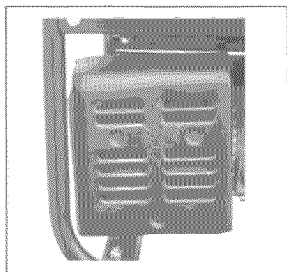
The engine should never run without the element; excessive piston and/or cylinder may wear.

4) MUFFLER

WARNING: _____

- The engine and muffler will be very hot after the engine has been run. Avoid touching the engine and muffler while they are still hot with any part of your body or clothing during inspection or repair.
-

1. Remove the muffler from the engine.
2. Clean the carbon deposits out of the muffler using a wire brush.
3. Check the muffler, Replace it if damaged.
4. Install the muffler to the engine.



GASOLINE GENERATOR INSTRUCTOR

7. TROUBLE SHOOTING

1) Engine fails to start

1. Fuel system

No fuel supplied to combustion chamber.

- No fuel in tank Supply fuel.
- Clogged fuel line Clean fuel line.
- Foreign matter in fuel cock Clean fuel cock or if closed, open it.
- Clogged carburetor Clean carburetor.

2. Engine oil system Insufficient

- Oil level is low Add engine oil.

3. Electrical systems

Poor spark

- Spark plug dirty with carbon or wet
Remove carbon or wipe spark plug dry.
- Faulty ignition system Consult dealer.

4. Compression insufficient

- Worn out piston and cylinder
Consult dealer.
- Loose cylinder head nuts Tighten nuts properly.
- Damaged gasket Replace gasket.

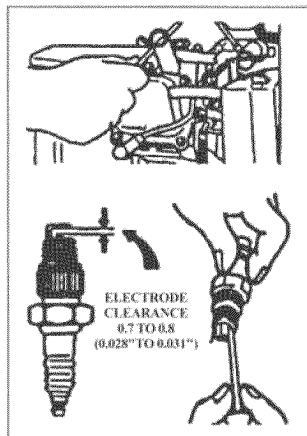
5. Choke lever

- If the cheke lever is not in proper position, set it to close position.
(After the engine runs, set the cheke lever to open position.)

2) No electricity is generated at receptacle

1. AC protector

Check to make sure the AC protector is in the on position.



GASOLINE GENERATOR INSTRUCTOR

2. Appliance

Check whether the appliance has been connected to the generator when the engine is started.

Disconnect the appliance from receptacle.

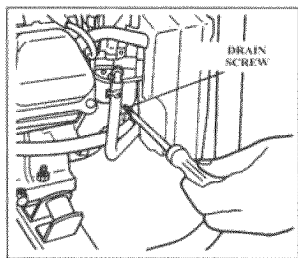
3. Control box

Check wire leads in control box for loose connections. Secure connections if necessary.

8. STORAGE

Long-term storage of your machine will require some preventive procedures to guard against deterioration.

1. Pour in about 2~3cc SAE 10W30 or 20W40 motor oil into the cylinder with the spark plug removed. Drain the fuel from the carburetor completely.
2. Use the recoil starter to turn the engine over several times (with ignition cap off).
3. Pull the recoil starter until you feel compression.
4. Stop pulling.
5. Drain fuel from the tank carefully.
6. Clean exterior of the generator and apply a rust inhibitor.
7. Store the generator in a dry, well-ventilated place, with the cover place over it.
8. The generator must remain in a vertical position.



NOTE:

After a long-term storage of your machine, change the engine oil before it starts.

GASOLINE GENERATOR INSTRUCTOR

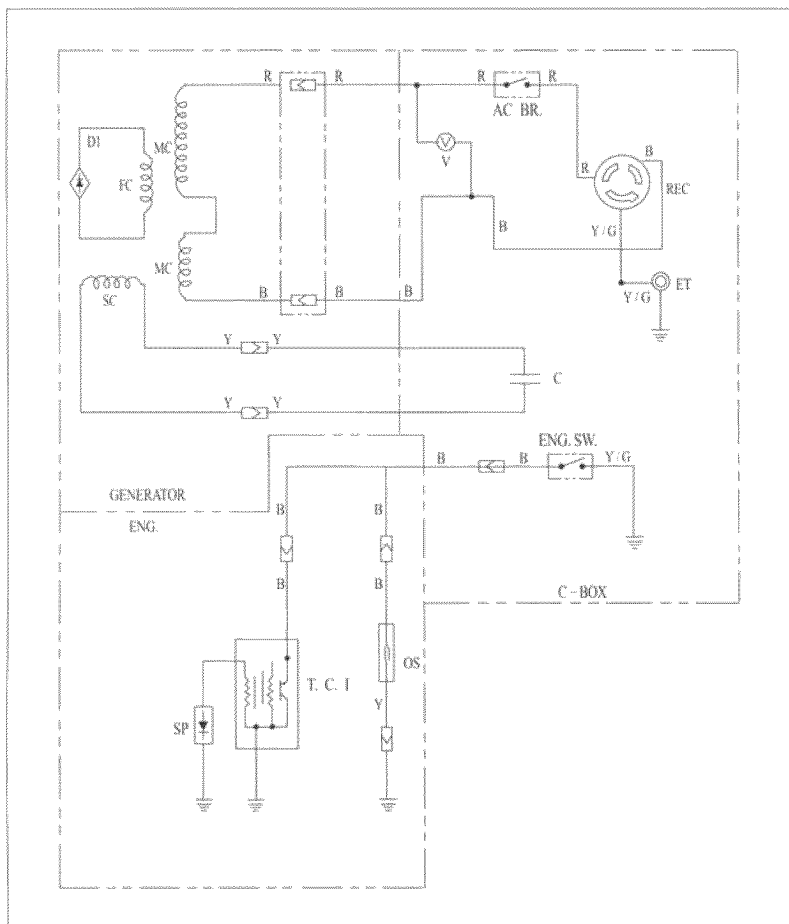
9. SPECIFICATION

	Model	SP-GG200
GENERATOR	Type	Brush
	Rated AC Output(W)	1400W
	Max. AC Output(W)	2000W
	Frequency(Hz)	60Hz
ENGINE	Model	JF154
	Bore×Stroke(mm×mm)	54×38
	Displacement(ml)	98.5 ml
	Max. AC Power(W)	2000W (3600 RPM)
	Right Crankcase Form	Crankcase Cover
SET	Overall Dimension(L×W×H)(in)	8.54x14.25x15.35
	Net Weight (lbs)	54.56 lbs.
	Gross Weight (lbs)	56.76 lbs.
STANDARD FEATURES	AC Socket	●
	AC Circuit Breaker	●
	AC Socket	●
	Engine Switch	●
	Pilot Lamp	●
	Oil Alert	●
OPTION	DC socket (8.3A@120V)	○
	DC Circuit Breaker	○

- Specifications subject to change without prior notice.

GASOLINE GENERATOR INSTRUCTOR

10. WIRING DIAGRAM



GASOLINE GENERATOR INSTRUCTOR

Symbol	Parts Name	Symbol	Parts Name
ENG.	Engine	OS	Oil senser
SP	Spark plug	SC	Auxiliary winding
FC	Field winding	V	Voltmeter
MC	AC winding	C	Capacitor
AC BR.	AC circuit breaker	ST. MC	Stator winding
DI	Rectifier	T.C.I	T.C.I unit
Symbol	Wire Colour	Symbol	Wire Colour
Y/G	Yellow/Green	BR	Brown
Y	Yellow	O	Orange
R	Red	O/G	Orange/Green
B	Black	BL	Blue

Owner's Manual

General Parts Listing

This list is provided for reference purposes only.
All repairs and part replacement should be performed by a qualified technician.
Some parts may not be available as single replacements.

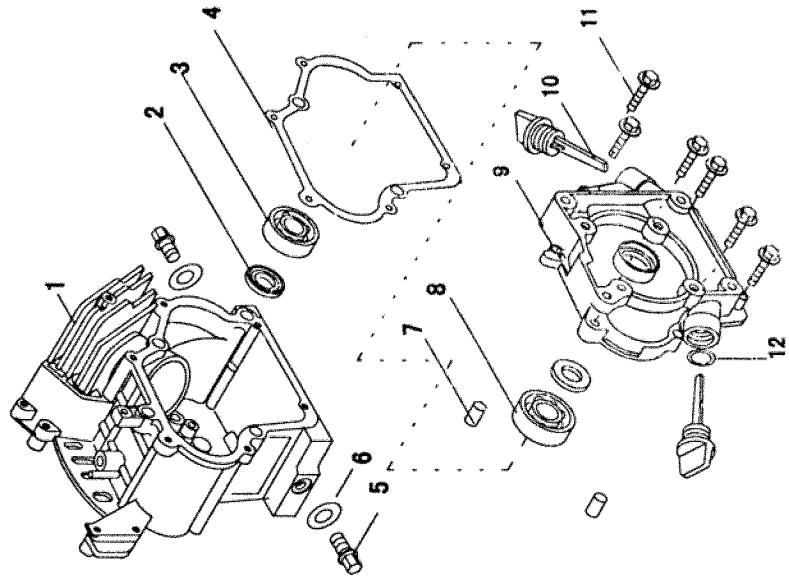


FIG A. CRANKCASE ASSY

APA Part No.	Part No	Description	Qty.
SP-GG200-A-01-JD	EG-LY152-A01	Crankcase assy.	1
SP-GG200-A-02-JD	EG-HT152-A02	Oil seal	2
SP-GG200-A-03-JD	EG-HT152-A03	Bearing 6203	1
SP-GG200-A-04-JD	EG-HT152-A04	Crankcase gasket	1
SP-GG200-A-05-JD	EG-HT152-A05	Drain bolt	2
SP-GG200-A-06-JD	EG-HT152-A06	Washer	2
SP-GG200-A-07-JD	EG-HT152-A07	Dowel pin	2
SP-GG200-A-08-JD	EG-HT152-A08	Bearing 6203	1
SP-GG200-A-09-JD	EG-HT152-A09	Crankcase cover	1
SP-GG200-A-10-JD	EG-HT152-A10	Oil level cap assy.	2
SP-GG200-A-11-JD	EG-HT152-A11	Flange bolt	6
SP-GG200-A-12-JD	EG-HT152-A12	"O" Ring	2

2000W Generator

General Parts Listing

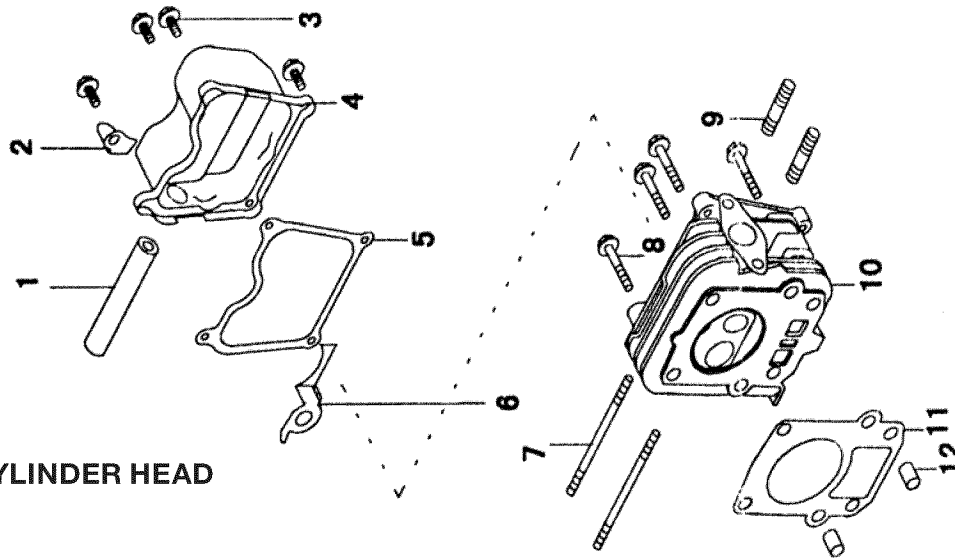


FIG B. CYLINDER HEAD

APA Part No.	Part No	Description	Qty.
SP-GG200-B-01-JD	EG- LY 152-B01	Pipe	1
SP-GG200-B-02-JD	EG- LY 152-B02	Wire board	1
SP-GG200-B-03-JD	EG- LY 152-B03	Flange bolt	4
SP-GG200-B-04-JD	EG- LY 152-B04	Head cover comp	1
SP-GG200-B-05-JD	EG- LY 152-B05	Head cover gasket	1
SP-GG200-B-06-JD	EG- LY 152-B06	Press board	1
SP-GG200-B-07-JD	EG- LY 152-B07	Bolt M6x90	2
SP-GG200-B-08-JD	EG- LY 152-B08	Flange bolt	4
SP-GG200-B-09-JD	EG- LY 152-B09	Bolt M6x38	2
SP-GG200-B-10-JD	EG- LY 152-B10	Cylinder head assy.	1
SP-GG200-B-11-JD	EG- LY 152-B11	Cylinder head gasket	1
SP-GG200-B-12-JD	EG- LY 152-B12	Dowel pin	2

Owner's Manual

General Parts Listing

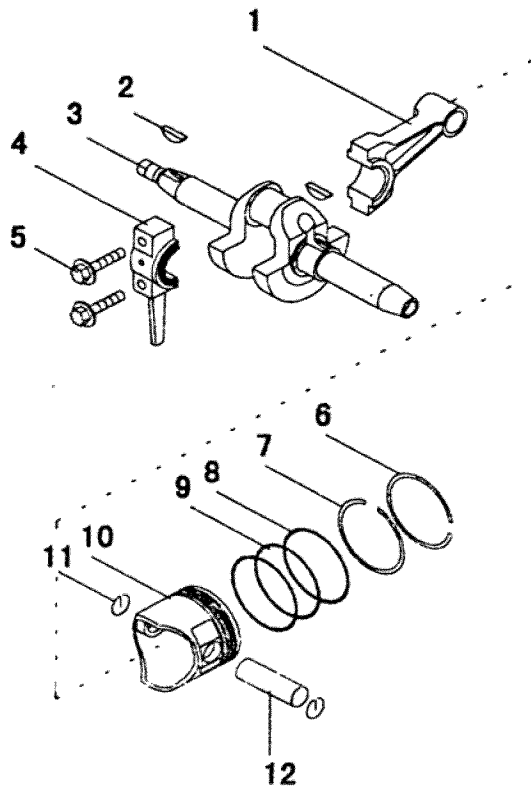


FIG C. CRANKSHAFT PISTON

APA Part No.	Part No.	Description	Qty.
SP-GG200-C-01-JD	EG-LY152-C01	Connecting rod	1
SP-GG200-C-02-JD	EG-LY152-C02	Semicircle key	2
SP-GG200-C-03-JD	EG-LY152-C03	Crankshaft assy.	1
SP-GG200-C-04-JD	EG-LY152-C04	Connecting rod cover	1
SP-GG200-C-05-JD	EG-LY152-C05	Flange bolt	2
SP-GG200-C-06-JD	EG-LY152-C06	First piston ring	1
SP-GG200-C-07-JD	EG-LY152-C07	Second piston ring	1
SP-GG200-C-08-JD	EG-LY152-C08	Oil ring guide slot	1
SP-GG200-C-09-JD	EG-LY152-C09	Spring	1
SP-GG200-C-10-JD	EG-LY152-C10	Piston	1
SP-GG200-C-11-JD	EG-LY152-C11	Piston pin clip	2
SP-GG200-C-12-JD	EG-LY152-C12	Piston pin	1

2000W Generator

General Parts Listing

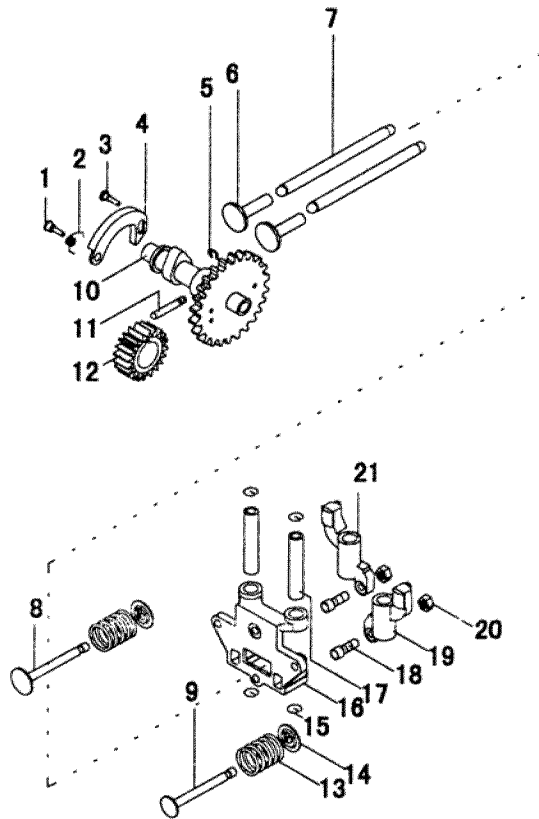


FIG D. CAMSHAFT

APA Part No.	Part No.	Description	Qty.
SP-GG200-D-01-JD	EG-LY152-D01	Pin A	1
SP-GG200-D-02-JD	EG-LY152-D02	Spring	1
SP-GG200-D-03-JD	EG-LY152-D03	Pin B	1
SP-GG200-D-04-JD	EG-LY152-D04	Slide block	1
SP-GG200-D-05-JD	EG-LY152-D05	Lock ring	1
SP-GG200-D-06-JD	EG-LY152-D06	Valve lifter	2
SP-GG200-D-07-JD	EG-LY152-D07	Push rod	2
SP-GG200-D-08-JD	EG-LY152-D08	Intake valve	1
SP-GG200-D-09-JD	EG-LY152-D09	Exhaust valve	1
SP-GG200-D-10-JD	EG-LY152-D10	Camshaft	1
SP-GG200-D-11-JD	EG-LY152-D11	Pin	1
SP-GG200-D-12-JD	EG-LY152-D12	Pinion	1

Owner's Manual

General Parts Listing

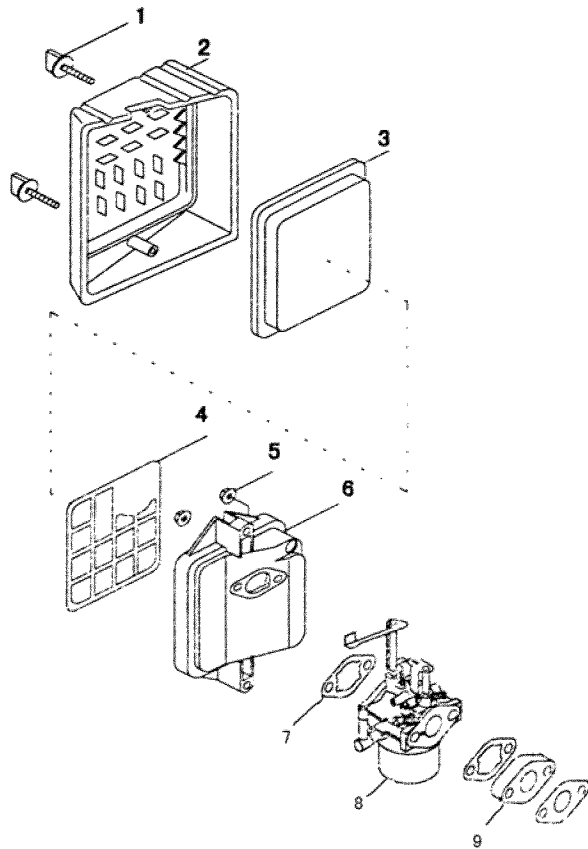
FIG D. CAMSHAFT

APA Part No.	Part No.	Description	Qty.
SP-GG200-D-13-JD	EG-LY152-D13	Valve spring	2
SP-GG200-D-14-JD	EG-LY152-D14	Spring retainers	2
SP-GG200-D-15-JD	EG-LY152-D15	Rocker ring	4
SP-GG200-D-16-JD	EG-LY152-D16	Rocker seat	1
SP-GG200-D-17-JD	EG-LY152-D17	Rocker arm shaft	2
SP-GG200-D-18-JD	EG-LY152-D18	Adjusters screw	2
SP-GG200-D-19-JD	EG-LY152-D19	Exhaust rocker	1
SP-GG200-D-20-JD	EG-LY152-D20	Net M6	2
SP-GG200-D-21-JD	EG-LY152-D21	Intake rocker	1

2000W Generator

General Parts Listing

FIG E. AIR CLEANER



APA Part No.	Part No.	Description	Qty.
SP-GG200-E-01-JD	EG-LY152-E01	Bolt	2
SP-GG200-E-02-JD	EG-LY152-E02	Filter cover	1
SP-GG200-E-03-JD	EG-LY152-E03	Air cleaner element	1
SP-GG200-E-04-JD	EG-LY152-E04	Hold rack	1
SP-GG200-E-05-JD	EG-LY152-E05	Net M6	2
SP-GG200-E-06-JD	EG-LY152-E06	Filter seat	1
SP-GG200-E-07-JD	EG-LY152-E07	Gasket	3
SP-GG200-E-08-JD	EG-LY152-F01	Carburetor assy.	1
SP-GG200-E-09-JD	EG-LY152-E09	Carburetor pipe	1

Owner's Manual

General Parts Listing

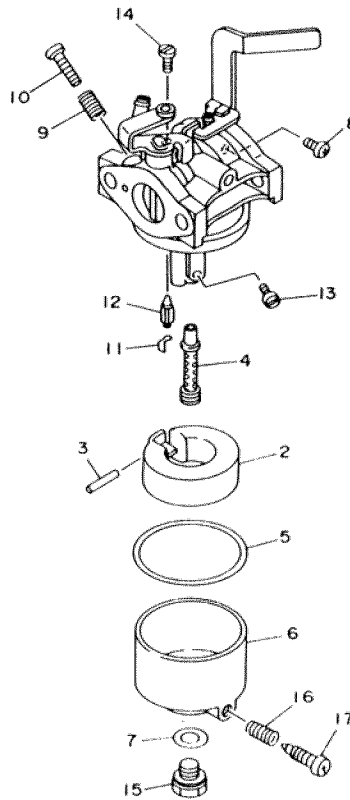


FIG F. CARBURETOR

APA Part No.	Part No.	Description	Qty.
SP-GG200-F-01-JD	EG-LY152-F01	Carburetor assy.	1
SP-GG200-F-02-JD	EG-LY152-F02	Float	1
SP-GG200-F-03-JD	EG-LY152-F03	Float pin	1
SP-GG200-F-04-JD	EG-LY152-F04	Main nozzle	1
SP-GG200-F-05-JD	EG-LY152-F05	Gasket	1
SP-GG200-F-06-JD	EG-LY152-F06	Float chamber body	1
SP-GG200-F-07-JD	EG-LY152-F07	Gasket	1
SP-GG200-F-08-JD	EG-LY152-F08	Bolt	1
SP-GG200-F-09-JD	EG-LY152-F09	Spring	1
SP-GG200-F-10-JD	EG-LY152-F10	Pilot screw	1
SP-GG200-F-11-JD	EG-LY152-F11	Bracket	1
SP-GG200-F-12-JD	EG-LY152-F12	Needle assembly	1

2000W Generator

General Parts Listing

FIG F. CARBURETOR

APA Part No.	Part No.	Description	Qty.
SP-GG200-F-13-JD	EG-LY152-F13	Main jet	1
SP-GG200-F-14-JD	EG-LY152-F14	Pilot jet	1
SP-GG200-F-15-JD	EG-LY152-F15	Bolt	1
SP-GG200-F-16-JD	EG-LY152-F16	Spring	1
SP-GG200-F-17-JD	EG-LY152-F17	Bolt	1

Owner's Manual

General Parts Listing

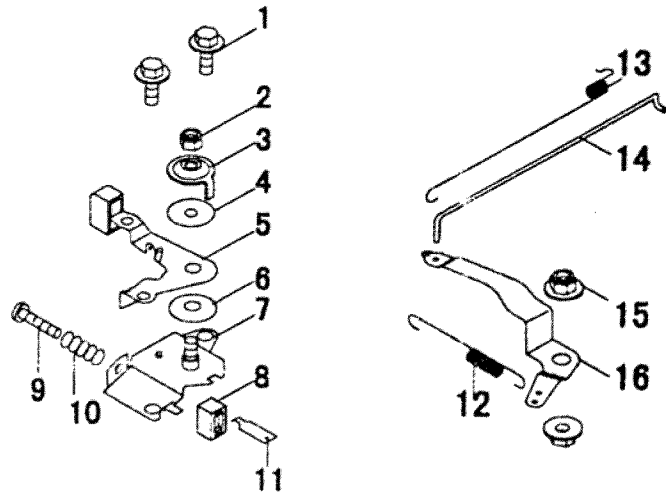
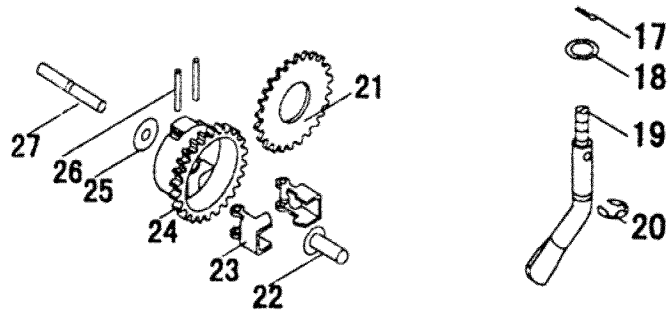


FIG G. GOVERNOR



APA Part No.	Part No.	Description	Qty.
SP-GG200-G-01-JD	EG-LY152-G01	Bolt	2
SP-GG200-G-02-JD	EG-LY152-G02	Nut M6	1
SP-GG200-G-03-JD	EG-LY152-G03	Platen	1
SP-GG200-G-04-JD	EG-LY152-G04	Spring washer	1
SP-GG200-G-05-JD	EG-LY152-G05	Handle	1
SP-GG200-G-06-JD	EG-LY152-G06	Washer	1
SP-GG200-G-07-JD	EG-LY152-G07	Shaft	1
SP-GG200-G-08-JD	EG-LY152-G08	Insulationframe	1
SP-GG200-G-09-JD	EG-LY152-G09	Bolt	1
SP-GG200-G-10-JD	EG-LY152-G10	Spring	1
SP-GG200-G-11-JD	EG-LY152-G11	Socket	1

2000W Generator

General Parts Listing

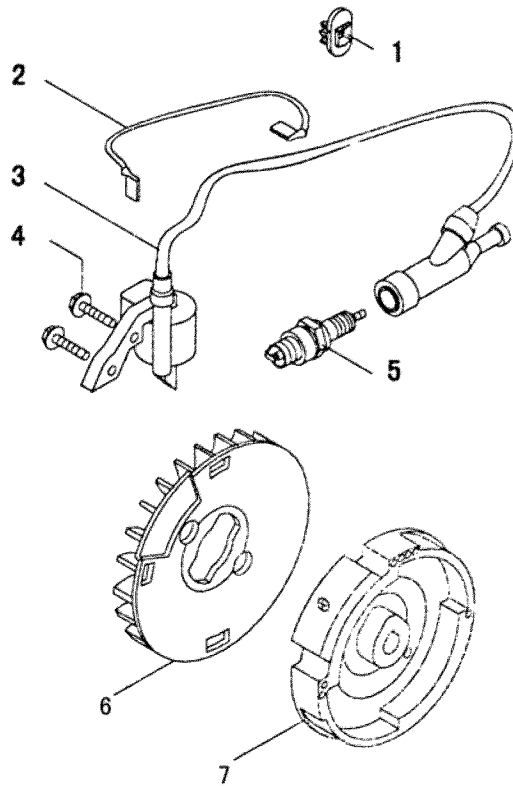
FIG G. GOVERNOR

APA Part No.	Part No.	Description	Qty.
SP-GG200-G-12-JD	EG-LY152-G12	Spring	1
SP-GG200-G-13-JD	EG-LY152-G13	Spring	1
SP-GG200-G-14-JD	EG-LY152-G14	Link rod	1
SP-GG200-G-15-JD	EG-LY152-G15	Nut M 6	2
SP-GG200-G-16-JD	EG-LY152-G16	Governor arm	1
SP-GG200-G-17-JD	EG-LY152-G17	Lockring	1
SP-GG200-G-18-JD	EG-LY152-G18	Washer	1
SP-GG200-G-19-JD	EG-LY152-G19	Governor shaft	1
SP-GG200-G-20-JD	EG-LY152-G20	Lock ring	1
SP-GG200-G-21-JD	EG-LY152-G21	Gear	1
SP-GG200-G-22-JD	EG-LY152-G22	Governor slider	1
SP-GG200-G-23-JD	EG-LY152-G23	Flyweight	2
SP-GG200-G-24-JD	EG-LY152-G24	Adjust speed gear	1
SP-GG200-G-25-JD	EG-LY152-G25	Washer	1
SP-GG200-G-26-JD	EG-LY152-G26	Flywheel shaft	2
SP-GG200-G-27-JD	EG-LY152-G27	Adjusts peed gear shaft	1

Owner's Manual

General Parts Listing

FIG H. IGNITION FLYWHEEL

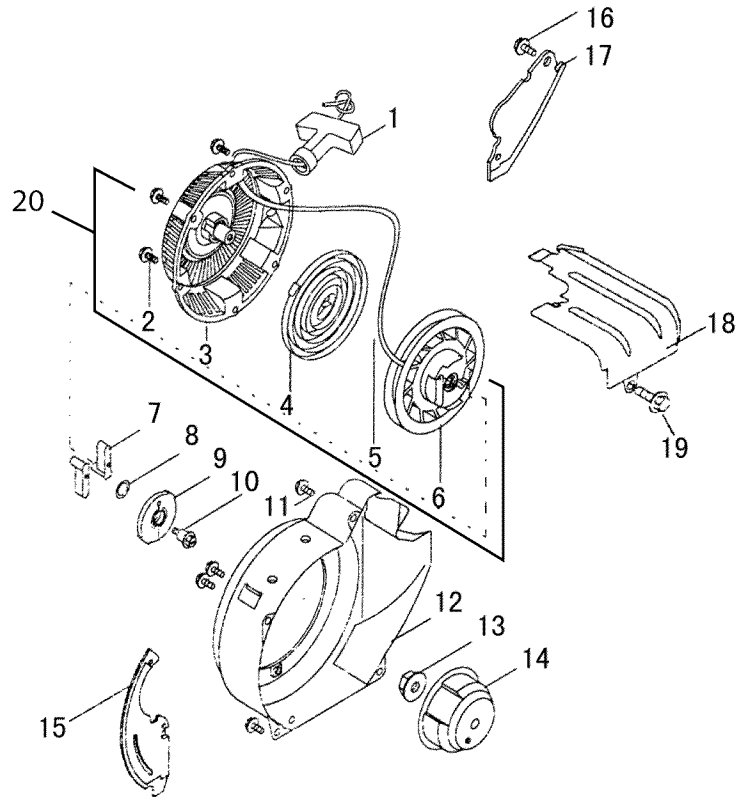


APA Part No.	Part No.	Description	Qty.
SP-GG200-H-01-JD	EG-LY152-H01	String frame	1
SP-GG200-H-02-JD	EG-LY152-H02	Stopping protective wires	1
SP-GG200-H-03-JD	EG-LY152-H03	Ignition coil assy.	1
SP-GG200-H-04-JD	EG-LY152-H04	Flange bolt	2
SP-GG200-H-05-JD	EG-LY152-H05	Spark plug	1
SP-GG200-H-06-JD	EG-LY152-H06	Fan	1
SP-GG200-H-07-JD	EG-LY152-H07	Flywheel	1

2000W Generator

General Parts Listing

FIG I. RECOIL STARTER



APA Part No.	Part No.	Description	Qty.
SP-GG200-I-01-JD	EG-LY152-I01	Handle	1
SP-GG200-I-02-JD	EG-LY152-I02	Bolt	3
SP-GG200-I-03-JD	EG-LY152-I03	Recoil starter case	1
SP-GG200-I-04-JD	EG-LY152-I04	Starter spring	1
SP-GG200-I-05-JD	EG-LY152-I05	Recoil starter rope	1
SP-GG200-I-06-JD	EG-LY152-I06	Drum sheave	1
SP-GG200-I-07-JD	EG-LY152-I07	Drive pawls	2
SP-GG200-I-08-JD	EG-LY152-I08	Clip	1
SP-GG200-I-09-JD	EG-LY152-I09	Drive plate	1
SP-GG200-I-10-JD	EG-LY152-I10	Pin	1
SP-GG200-I-11-JD	EG-LY152-I11	Bolt	4
SP-GG200-I-12-JD	EG-LY152-I12	Flywheel cover	1
SP-GG200-I-13-JD	EG-LY152-I13	Nut	1

Owner's Manual

General Parts Listing

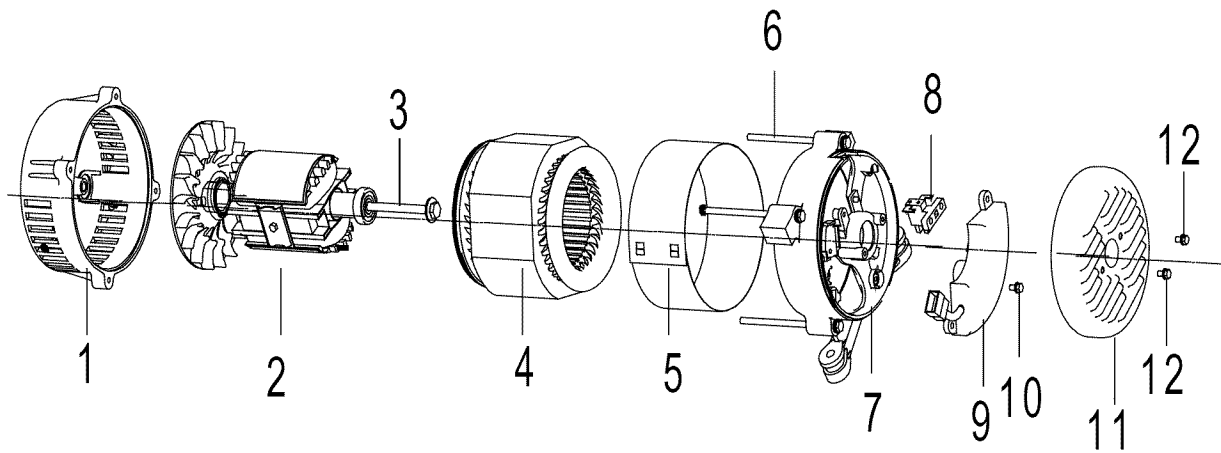
FIG I. RECOIL STARTER

APA Part No.	Part No.	Description	Qty.
SP-GG200-I-14-JD	EG-LY152-I14	Starter pulle	1
SP-GG200-I-15-JD	EG-LY152-I15	Behind cover	1
SP-GG200-I-16-JD	EG-LY152-I16	Bolt	2
SP-GG200-I-17-JD	EG-LY152-I17	Front cover	1
SP-GG200-I-18-JD	EG-LY152-I18	Air shroud	1
SP-GG200-I-19-JD	EG-LY152-I19	Bolt	1
SP-GG200-I-20-JD	EG-LY152-I20	Recoil starter assy	1

2000W Generator

General Parts Listing

FIG J. magneto

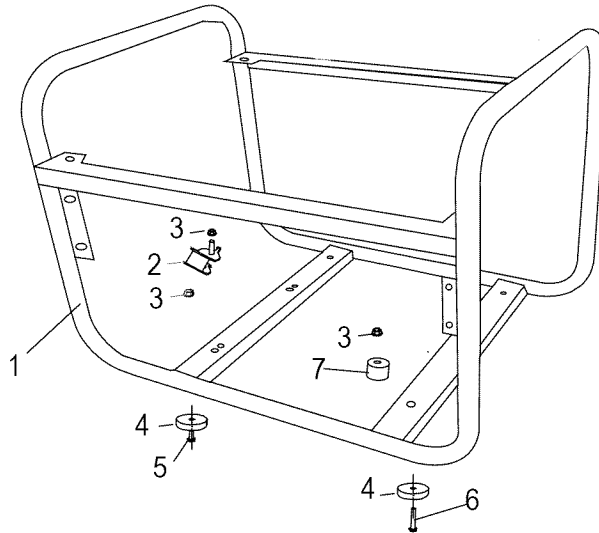


APA Part No.	Part No.	Description	Qty.
SP-GG200- J-01-JD	JD1200-J-01	Front cover	1
SP-GG200- J-02-JD	JD1200-J-02	Rotor	1
SP-GG200- J-03-JD	JD1200-J-03	Bolt M8X185	1
SP-GG200- J-04-JD	JD1200-J-04	Stator	1
SP-GG200- J-05-JD	JD1200-J-05	Stator	1
SP-GG200- J-06-JD	JD1200-J-06	Bolt M6X105	4
SP-GG200- J-07-JD	JD1200-J-07	Rear cover	1
SP-GG200- J-08-JD	JD1200-J-08	Bush Assy.	1
SP-GG200- J-09-JD	JD1200-J-09	AVR.	1
SP-GG200- J-10-JD	JD1200-J-10	Tapping screw	2
SP-GG200- J-11-JD	JD1200-J-11	Generator cover	1
SP-GG200- J-12-JD	JD1200-J-12	Bolt	2

Owner's Manual

General Parts Listing

FIG K.

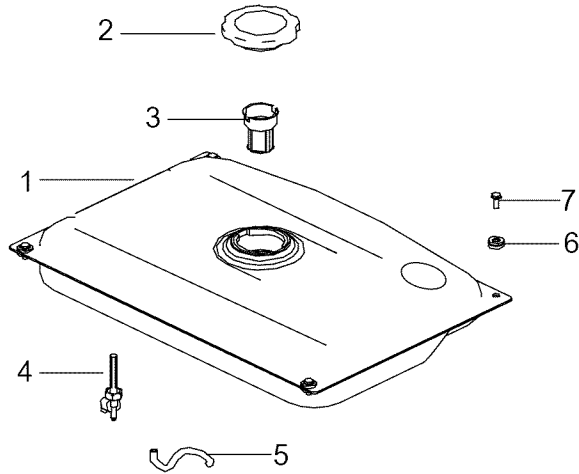


APA Part No.	Part No.	Description	Qty.
SP-GG200- K-1-JD	JD1200-K-01	Frame comp.	1
SP-GG200- K-2-JD	JD1200-K-02	Bottom rubber A	2
SP-GG200- K-3-JD	JD1200-K-03	Flange nut M8	9
SP-GG200- K -4-JD	JD1200-K-04	Bottom rubber B	4
SP-GG200- K-5-JD	JD1200-K-05	Bolt M8X16	3
SP-GG200- K-6-JD	JD1200-K-06	Bolt M8X55	2
SP-GG200- K-7-JD	JD1200-K-07	Bottom rubber C	2

2000W Generator

General Parts Listing

FIG L

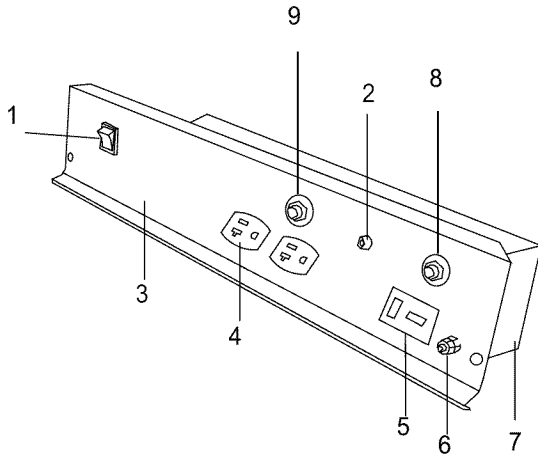


APA Part No.	Part No.	Description	Qty.
SP-GG200-L -01-JD	JD1200-L-01	Fuel tank comp.	1
SP-GG200-L -02-JD	JD1200-L-02	Fuel filter cap comp	1
SP-GG200-L -03-JD	JD1200-L-03	Fuel filter	1
SP-GG200-L -04-JD	JD1200-L-04	Fuel valve	1
SP-GG200-L -05-JD	JD1200-L-05	Fuel tube	1
SP-GG200-L-06-JD	JD1200-L-06	Tank cushion rubber	4
SP-GG200-L -07-JD	JD1200-L-07	Flange bolt M6X16	4

Owner's Manual

General Parts Listing

FIG M



APA Part No.	Part No.	Description	Qty.
SP-GG200-M-01-JD	JD1200-M-01	ENGINE SWITCH ASSY	1
SP-GG200-M -02-JD	JD1200-M-02	OIL ALERT LAMP	1
SP-GG200-M -03-JD	JD1200-M-03	CONTROL PANEL COMP.	1
SP-GG200-M -04-JD	JD1200-M-04	120V RECEPTACLE	1
SP-GG200-M -05-JD	JD1200-M-05	120V RECEPTACLE	1
SP-GG200-M -06-JD	JD1200-M-06	EARTH TERMINAL SCREW	1
SP-GG200-M -07-JD	JD1200-M-07	CONTROL PANEL BACK BOX	1
SP-GG200-M -08-JD	JD1200-M-08	CIRCUIT PROTECTOR(8A)	1
SP-GG200-M -09-JD	JD1200-M-09	CIRCUIT PROTECTOR(10A)	1