

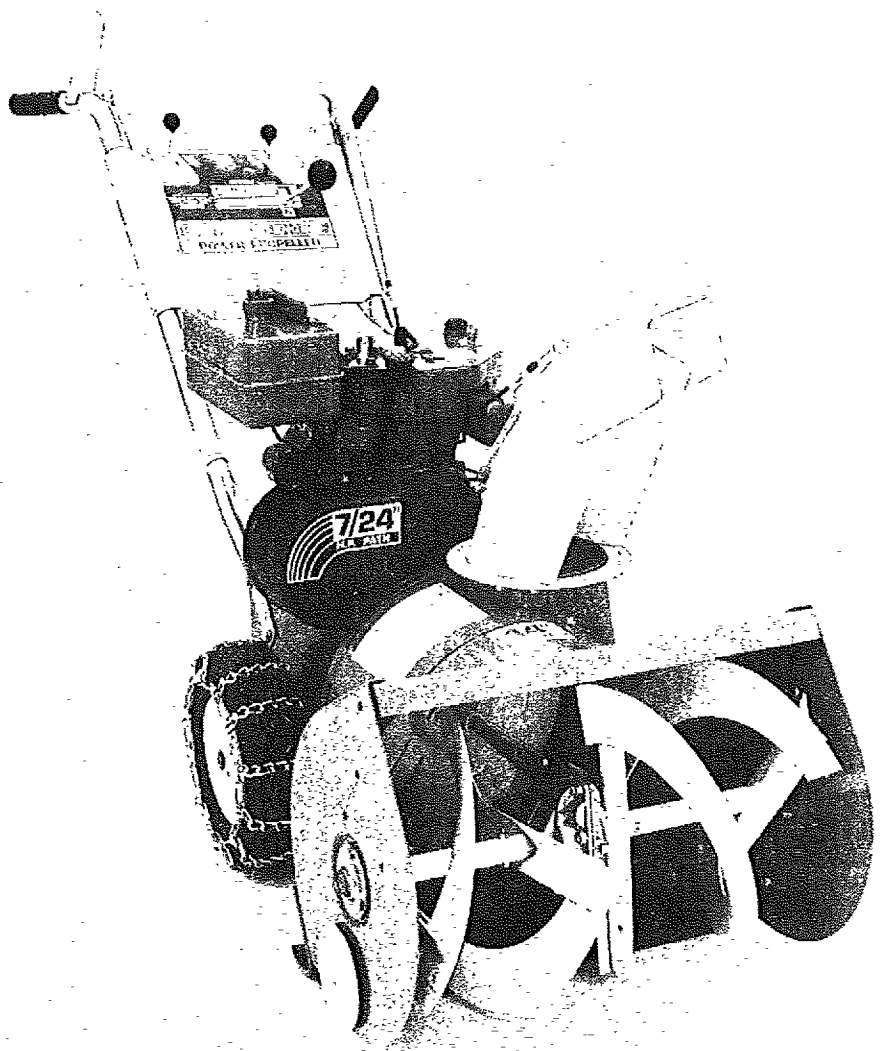
**Sears**

owner's  
manual

**MODEL NO.  
536.918300**

**CAUTION:**

Read  
INSTRUCTIONS  
carefully



**Sears**

**CRAFTSMAN®**

## **24" SNOW THROWER**

- **Assembly**
- **Operating**
- **Maintenance**
- **Repair Parts**

SEARS, ROEBUCK AND CO., Chicago, Illinois 60684 U.S.A.



Look for this symbol. It means — **ATTENTION! BECOME ALERT! A HAZARD TO OPERATOR, BYSTANDERS, PROPERTY OR UNIT MAY EXIST.**



## TABLE OF CONTENTS

|   | Page |   | Page  |
|---|------|---|-------|
| OWNERS INFORMATION .....                      | 2    | Impeller/Auger Control Cable Adjustment ..... | 10    |
| MAINTENANCE AGREEMENT .....                   | 2    | Carburetor Adjustment .....                   | 10    |
| WARRANTY .....                                | 2    | Spark Plug Adjustment .....                   | 10    |
| OPERATIONAL PRECAUTIONS .....                 | 3    | MAINTENANCE .....                             | 10-12 |
| Contents of Shipping Carton .....             | 4    | Drive Belt Replacement .....                  | 10,11 |
| Tools Required for Assembly .....             | 4    | Shear Bolt Replacement .....                  | 11    |
| ASSEMBLY .....                                | 4-6  | Roller Chain Replacement .....                | 11    |
| Handle Assembly .....                         | 4    | Transmission Replacement .....                | 11    |
| Controls Assembly .....                       | 4,5  | Snow Chain Removal .....                      | 11    |
| Skid and Gage Wheel (Height) Adjustment ..... | 6    | Lubrication .....                             | 11,12 |
| OPERATION .....                               | 6-8  | Engine Service .....                          | 12    |
| Operating Controls .....                      | 6,7  | STORAGE .....                                 | 12    |
| Snow Thrower Operation .....                  | 7    | Engine Storage .....                          | 12    |
| Before Starting Engine .....                  | 7,8  | Unit Storage .....                            | 12    |
| To Start Engine .....                         | 8    | LUBRICATION CHART .....                       | 13    |
| ADJUSTMENTS .....                             | 8-10 | UNIT REPAIR PARTS .....                       | 14-21 |
| Drive Belt Adjustment .....                   | 8,9  | ENGINE REPAIR PARTS .....                     | 22-25 |
| Chute Deflector Cable Adjustment .....        | 9    | TRANSMISSION REPAIR PARTS .....               | 26    |
| Power Clutch Cable Adjustment .....           | 9    | SERVICE HELPS CHART .....                     | 27    |
| Wheel Drive Control Adjustment .....          | 9,10 | HOW TO ORDER REPAIR PARTS .....               | 28    |

## OWNER'S INFORMATION

Record the following information about your unit so that you will be able to provide it in case of loss or theft.

DATE PURCHASED: \_\_\_\_\_ MODEL NO.: 536.918300 CODE NO.: \_\_\_\_\_  
 STORE WHERE PURCHASED: ADDRESS \_\_\_\_\_  
 CITY \_\_\_\_\_ STATE \_\_\_\_\_ TELEPHONE \_\_\_\_\_

## MAINTENANCE AGREEMENT

The Craftsman Warranty, plus a Maintenance Agreement, provide maximum value for Sears products. Contact your nearest Sears store for details.

### CRAFTSMAN WARRANTY

#### FULL ONE YEAR WARRANTY ON CRAFTSMAN SNOW THROWER

If this Snow Thrower fails to perform properly due to a defect in material or workmanship within one year from the date of purchase, Sears will repair it, free of charge.

WARRANTY SERVICE IS AVAILABLE BY SIMPLY CONTACTING THE NEAREST SEARS STORE OR SERVICE CENTER THROUGHOUT THE UNITED STATES.

This warranty gives you specific legal rights, and you may have other rights which vary from state to state.

SEARS, ROEBUCK AND CO. SEARS TOWER BSC 41-3 CHICAGO, IL 60684

## OPERATIONAL PRECAUTIONS



It is imperative in operating and handling your **Snow Thrower** that certain normal precautions be observed to prevent the possibility of injury or damage. Please read the following operational precautions before you assemble or use your new **Snow Thrower**.



### TRAINING

1. Wear safety glasses or eye shields when assembling or operating snow thrower.
2. Read the Owner's Manual carefully. Be thoroughly familiar with the controls and the proper use of the equipment. Know how to stop the unit and disengage the controls quickly.
3. Never allow children or young teenagers to operate equipment and instruct them to stay away from the unit while it is operating. Never allow adults to operate equipment without proper instruction.
4. Keep the area of operation clear of all persons, especially small children and pets.
5. Exercise caution to avoid slipping or falling, especially when operating in reverse.

### PREPARATION

1. Thoroughly inspect the area where the equipment is to be used and remove all door mats, sleds, boards, wires, and other foreign objects.
2. Disengage all clutches and shift into neutral before starting engine or motor.
3. Do not operate equipment without wearing adequate winter outer garments. Wear footwear which will improve footing on slippery surfaces.
4. Handle gasoline with care - it is highly flammable.
  - A. Use only approved gasoline containers.
  - B. Never remove fuel tank cap or add gasoline to a running or hot engine or fill fuel tank indoors.
  - C. Replace fuel tank cap securely and wipe any spilled gasoline at once.
  - D. Check your fuel supply before each use, allowing space for expansion as the heat of the engine and/or sun can cause gasoline to expand.
5. Use a grounded three wire plug-in for all units with electric starting motors.
6. Adjust auger housing height to clear gravel or crushed rock surfaces.
7. Never attempt to make any adjustments, except where required, while engine is running.
8. Let engine and machine adjust to outdoor temperatures before starting to clear snow.

### OPERATION

1. Do not put hands or feet near rotating parts. Keep clear of discharge opening at all times.
2. Exercise extreme caution when operating on or crossing a gravel drive, walks, or roads. Stay alert for hidden hazards or traffic. Do not carry passengers.
3. After striking a foreign object, stop the engine, remove wire from spark plug, thoroughly inspect the snow thrower for any damage, and repair the damage before restarting and operating the snow thrower.
4. If the unit should start to vibrate abnormally, stop the engine and check immediately for the cause. Vibration is generally a warning of trouble.

5. Stop engine whenever you leave the operating position, before unclogging the auger/impeller housing or discharge chute, and making any repairs, adjustments, or inspections.

6. Take all possible precautions when leaving the machine unattended. Disengage the auger/impeller, shift into neutral, stop the engine, and remove the key.

7. When cleaning, repairing, or inspecting, make certain auger/impeller and all moving parts have stopped. Disconnect spark plug wire and keep wire away from plug to prevent accidental starting.

8. Do not run engine indoors, except when starting engine and for transporting snow thrower in or out of building. If for some reason engine must be run indoors, open outside doors. Exhaust fumes contain carbon monoxide which is odorless and deadly poisonous.

9. Do not clear snow across the face of slopes. Exercise extreme caution when changing direction on slopes. Do not attempt to clear steep slopes.

10. Never operate snow thrower without guards, plates or other safety protective devices in place.

11. Never operate snow thrower near glass enclosures, automobiles, window wells, drop-off, etc. without proper adjustment of snow discharge angle.

12. Do not overload machine capacity by attempting to clear snow at too fast a rate.

13. Do not change engine governor settings. The governor controls the speed and protects the engine from excessive, damaging speeds.

14. Never operate machine at high transport speeds on slippery surfaces. Use care when backing.

15. Never direct discharge at bystanders or allow anyone in front of unit.

16. Disengage power to auger/impeller when transporting unit or when unit is not in use.

17. Use only accessories approved by manufacturer of the snow thrower (such as tire chains, electric start kits, etc).

18. Never operate the snow thrower without good visibility or light. Always be sure of your footing and keep a firm hold on the handles and walk, never run.

### MAINTENANCE AND STORAGE

1. Check shear bolts, engine mounting bolts, etc., at frequent intervals for proper tightness to be sure equipment is in safe working condition.

2. Run machine a few minutes after throwing snow to prevent freeze up of auger/impeller.

3. Never store gasoline or equipment with gasoline in the tank inside of a building where fumes may reach an open flame or spark. Never store your snow thrower for prolonged periods (more than 15 days) with gasoline in the fuel tank. Store gasoline and your snow thrower in a locked safe storage area secure from children and others.

## CONTENTS OF SHIPPING CARTON

- 1 - 24 inch Snow Thrower (completely assembled except for handles, controls and headlight).
- 1 - Can of Engine Oil
- 1 - Upper Chute Control Rod
- 1 - Left Hand Handle Assembly
- 1 - Right Hand Handle Assembly (with clutch lever attached)
- 1 - Control Panel Assembly
- 1 - Bag of Assembly Parts Containing:
  - 1 - 3/4 inch Flatwasher
  - 2 - 5/16 inch Split Lockwasher
- 10 - Formed (curved) Washers
- 4 - No. 10 x 1/2 inch Hex Head Screws
- 4 - No. 10 Locknuts
- 2 - 5/16 x 5/8 inch Hex Head Screws
- 2 - 5/16 x 1 inch Hex Head Screws
- 8 - 5/16 x 1 3/4 inch Hex Head Screws
- 8 - 5/16 inch Locknuts
- 1 - 3/8 x 3/4 inch Hex Head Screws
- 1 - 3/8 inch Locknut
- 1 - Cable Clamp (metal)
- 2 - Knobs (for Throttle and Impeller/Auger Drive Levers)
- 1 - Bag of Shear Bolt Replacement Parts (Not used in assembly) Containing:
  - 3 - 5/16 x 1 3/4 inch Shear Bolts
  - 3 - 5/16 inch Locknuts
  - 1 - Instruction Sheet

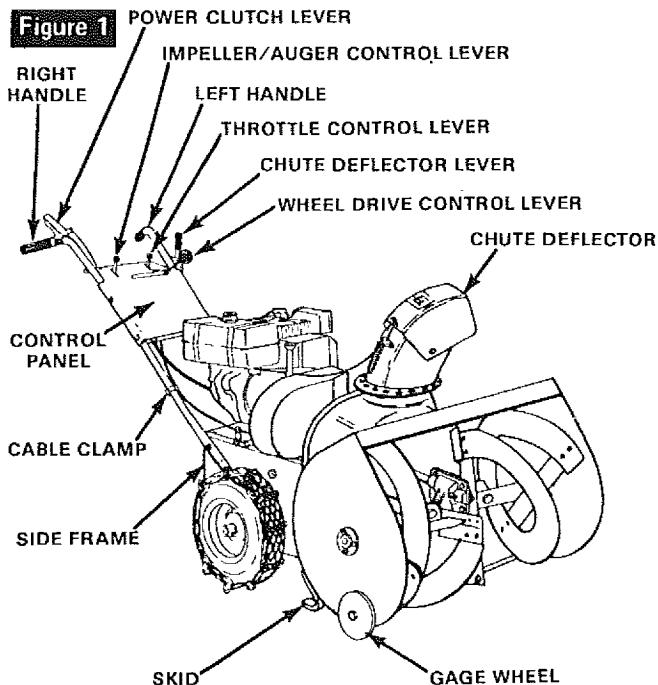
## TOOLS REQUIRED FOR ASSEMBLY

- 1 - 3/8 inch Wrench (or adjustable wrench)
- 1 - 5/16 inch Wrench (or adjustable wrench)
- 2 - 1/2 inch Wrenches (or adjustable wrenches)
- 2 - 7/16 inch Wrenches (or adjustable wrenches)
- 2 - 9/16 inch Wrenches (or adjustable wrenches)
- 1 - Hammer (plastic or rawhide head recommended)

## ASSEMBLY

Your Snow Thrower is right or left hand as you face the unit from operator position.

Figure 1 shows the Snow Thrower completely assembled. To complete the assembly, proceed as follows:



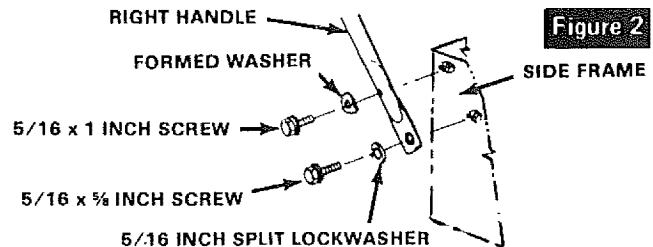
## ⚠ DANGER ⚠

The operation of any powered equipment can result in foreign objects being thrown into the eyes, which can result in severe eye damage. Always wear safety glasses or eye shields while assembling or operating Snow Thrower.

## HANDLE ASSEMBLY

Right handle has a lever (power clutch) attached to upper end. Nuts used to attach lower end of handles are attached to inside of side frame.

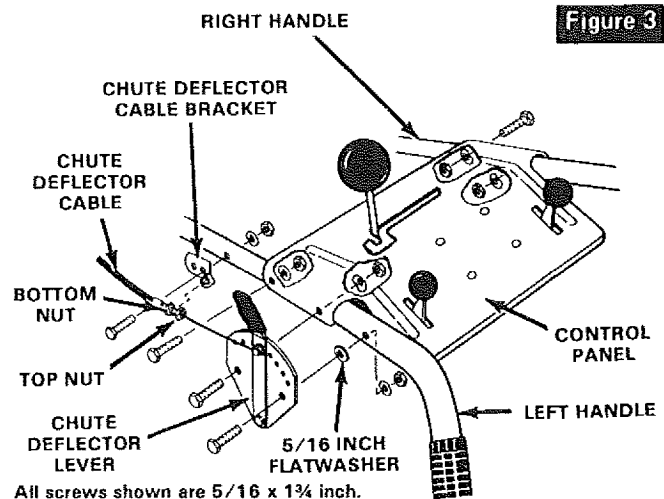
1. Attach right lower handle to side of side frame as shown in figure 2. Handle grip should be tilted down and out when handle is properly installed.
2. Repeat step 1 for left handle.



## CONTROLS ASSEMBLY

1. Attach control panel to handles as shown in figure 3. **NOTE:** Attach panel with lower screw only on left side.

2. Attach chute deflector lever as shown in figure 3. **NOTE:** Place a 5/16 inch flatwasher between lever assembly and handle at top screw position.



All screws shown are 5/16 x 1 3/4 inch.

All locknuts shown are 5/16 inch.

A formed washer is used on inside of handle at all screw locations.

3. To attach chute deflector cable bracket (attached to cable), proceed as follows:

- A. Place chute deflector lever in lowest (forward) notch.
- B. Grasp chute deflector cable bracket and pull down until a 5/16 x 1 3/4 inch screw can be placed through bracket and through left handle as shown in figure 3. **NOTE:** Only one of holes in cable bracket is large enough for mounting screw.

4. Cable length will need to be adjusted if chute deflector lever will not move all the way up to top notch in bracket or if

cable is loose and sags when lever is pushed all the way down to last notch. **To adjust cable:**

- A. Loosen bottom nut on power clutch cable (figure 4) and tighten top nut until lever will reach top notch.
- B. Loosen top nut and tighten bottom nut to remove looseness from cable when lever is in bottom notch.

5. Attach throttle control lever assembly (other end of cable attached to left rear of engine) to control panel as shown in figure 4 by:

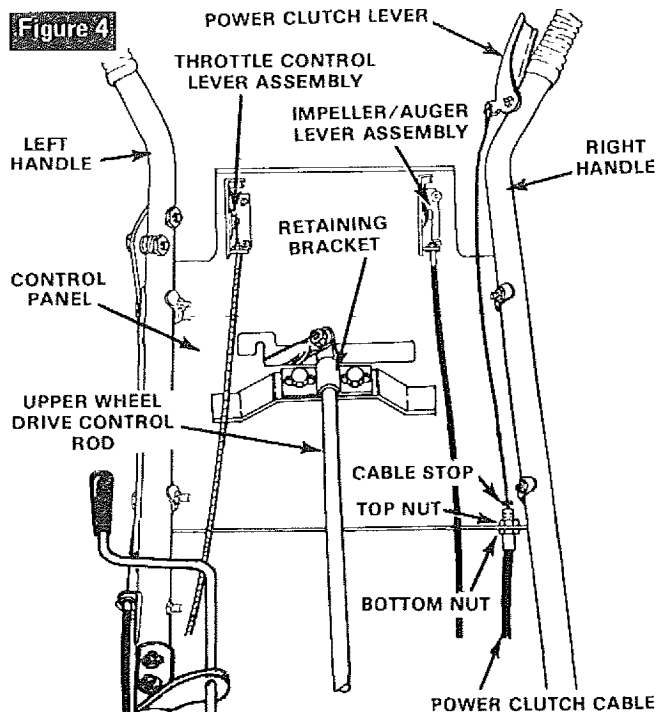
- A. Insert lever up through slot in left side of control panel.
- B. Attach with two No. 10 x 1/2 inch hex washer head screws and two No. 10 locknuts. **NOTE:** Before tightening screws and locknuts, check to make sure that lever does not rub side of slot in control panel.

6. Attach impeller/auger drive control lever (other end of cable is attached on right side of unit below gas tank) to control panel as shown in figure 4 by:

- A. Insert lever up through slot in right side of control panel.
- B. Attach with two No. 10 x 1/2 inch hex washer head screws and two No. 10 locknuts. **NOTE:** Before tightening screws and locknuts, check to make sure that lever does not rub side of slot in control panel.
- C. Attach impeller/auger drive control cable to handle with a cable clamp.
- D. Place a knob onto throttle and impeller/auger drive control levers and tap firmly with a hammer until knobs will not pull off. **CAUTION:** Knobs are made of plastic and will break if hit too hard. A plastic or rawhide hammer is recommended.

7. A power clutch cable is attached under belt cover in front of engine. Cable should wrap around left side of engine and under carburetor. Attach cable by:

- A. Remove top nut from threaded end of cable and slide cable through slot in lower edge of control panel.



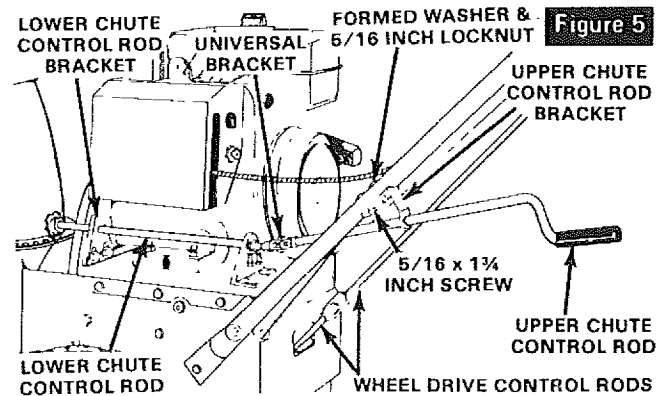
B. Push threaded end of cable up through hole in control panel and replace, but do not tighten, top nut.

C. Hook loop end of power clutch cable over pin on power clutch lever (figure 4). **NOTE:** It may be necessary to loosen bottom nut on cable to lengthen cable enough to hook over pin on clutch handle.

D. Tighten bottom nut on power clutch cable until cable stop (figure 4) just clears top end of threaded portion of cable. Tighten top nut to complete assembly.

8. Attach upper chute control rod and upper chute control rod bracket (mounted on rod) to bottom side of left handle (figure 5) with two 5/16 x 1 3/4 inch hex head screws, two 5/16 inch locknuts, and two formed washers.

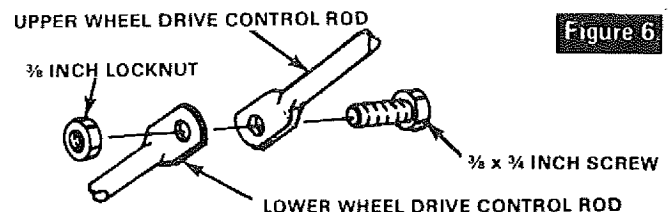
9. Remove the 1 inch screw and locknut from pivot block (part of universal bracket) located on end of lower rod (figure 5). Insert lower end of upper rod onto pivot block in universal bracket (figure 5) on lower chute control rod and secure with the removed screw and locknut. **CAUTION: Do not tighten locknut against universal bracket. This screw and nut must be loose enough to allow universal to move freely.**



10. Check sprocket end of chute control rod to make sure teeth on sprocket fully engages holes in flange around bottom of discharge chute. If adjustment is necessary, simply loosen screws attaching lower chute control rod bracket to main frame and slide bracket up or down until teeth on sprocket fully engages holes in flange.

11. Attach upper wheel drive control rod to lower wheel drive control rod as follows:

- A. Place wheel drive control lever in NEUTRAL position.
- B. Attach upper and lower rod ends with a 3/8 x 3/4 inch screw and 3/8 inch locknut as shown in figure 6 and tighten securely. **NOTE:** If rod ends do not line up, proceed with the following steps.
- C. Loosen screws in retaining bracket at top end of upper wheel drive rod (below control panel).
- D. Move rod left or right (make sure lever stops in NEUTRAL position) until holes in rods line up and place 3/8 x 3/4 inch screws through both rods. Tighten securely.
- E. Retighten loosened screws on retaining bracket.



## SKID and GAGE WHEEL (Height) ADJUSTMENT

### ⚠ CAUTION ⚠

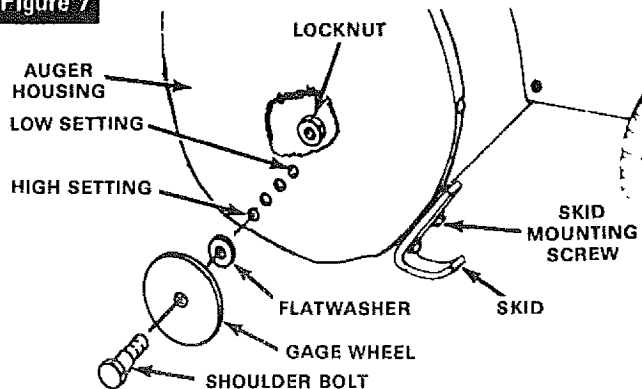
For packing purposes, the gage wheels on this unit were adjusted all the way up to lowest height position. Adjust height as instructed below before using snow thrower.

This unit is equipped with a pair of skids mounted on the back side of the auger housing and a pair of gage wheels located on the outside of the auger housing. Both the skids and gage wheels are used to elevate the front of the machine up to 1 inch. Figure 7 shows both parts.

When removing snow from hard surface area such as paved driveway or sidewalk, we suggest use of gage wheels only, to elevate front of machine to desired height. **To change height of gage wheels:**

1. Remove locknut on shoulder bolt through gage wheel (figure 7).
2. Relocate shoulder bolt into hole representing desired height and replace locknut.
3. Set wheel on other side at same height.
4. Loosen, pull up and tighten skids to full UP position after gage wheels have been set.

Figure 7



When removing snow from rock or unpaved construction; we suggest you raise the front of the machine with the skids. **To raise the machine with the skids:**

1. Loosen the skid mounting nuts (figure 7) and push the skid down until the front of the machine is raised to desired height. Retighten mounting nuts.
2. Set skid on other side at same height. **NOTE:** Be sure that front of unit is set at same height on both sides.

### ⚠ DANGER ⚠

Be certain to maintain proper ground clearance for your particular area to be cleared. Objects such as gravel, rocks or other debris, if struck by the impeller/auger, may be thrown with sufficient force to cause personal injury or property damage.

## OPERATION

The operation of any powered outdoor equipment can result in foreign objects being thrown into the eyes, which can result in severe eye damage. Always wear safety glasses or eye shields before beginning snow thrower operation. We recommend Wide Vision Safety Mask for over spectacles or standard safety glasses, available at SEARS Retail or Catalog Stores.



Familiarize yourself with the equipment and with the **Operational Precautions.**

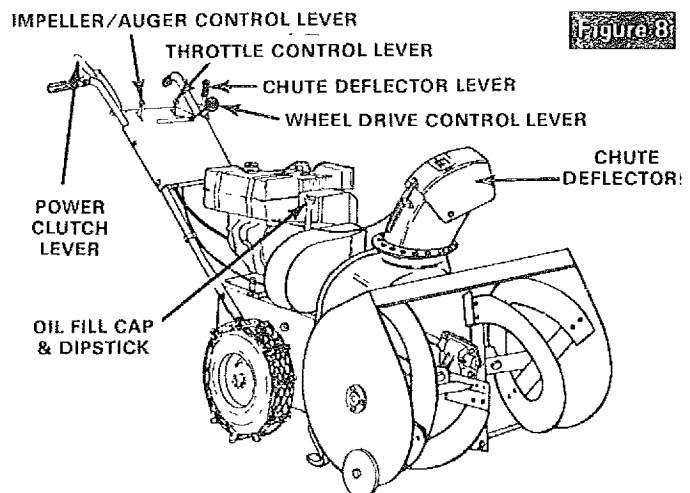
### OPERATING CONTROLS

Operating controls (figures 8 & 9) and their functions are as follows:

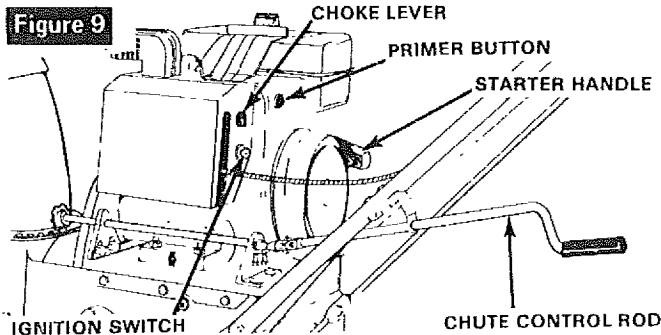
- **Power Clutch Lever** - The power clutch lever controls forward or reverse motion of the unit when the wheel drive control lever is in the appropriate position. When the operator's hand is removed from the power clutch lever, tension is removed from drive belts, therefore unit motion and impeller/auger rotation stop. Engage slowly but firmly and all the way down against hand grip.
- **Impeller/Auger Drive Control Lever** - Used to disengage power to impeller/auger without interfering with power to drive wheels. Pull up to engage. Push down to disengage. **NOTE:** Power clutch lever must be in released (disengaged) position before impeller/auger lever position is changed.
- **Throttle Control Lever** - This snow thrower is equipped with a control panel mounted throttle control lever used to control speed of engine. There are three positions on the throttle control - Stop - Slow - Fast.
- **Wheel Drive Control Lever** - Used to select desired unit speed or direction. Choice of five forward speeds, neutral and reverse.
- **Chute Deflector Lever** - The distance snow will be discharged can be adjusted by raising chute deflector (figure 8) for more distance, or lowering for less distance. Pull lever up to top notch for most distance. Push lever down to bottom notch for least distance.

### ⚠ DANGER ⚠

Do not put hands in or near the deflector chute while the engine is running.



- **Chute Control Rod** - Used to change direction of snow discharge. Turn handle counterclockwise to turn chute to left. Turn handle clockwise to turn chute to right. All snow can be discharged to one side by changing chute direction when changing direction of travel.
- **Choke Lever** - Set choke lever to FULL CHOKE position to start engine.
- **Primer Button** - Used to inject fuel directly into carburetor manifold to insure fast starts.
- **Ignition Switch** - Switch must be turned to ON position to start engine and turned to OFF position to stop engine.
- **Starter Handle** - This unit is equipped with a recoil starter.



## SNOW THROWER OPERATION

The most effective use of the snow thrower will be established by experience, taking into consideration the terrain, wind conditions and the depth and weight of the snow. It is the wind conditions and building location which will determine the direction of the discharge chute. Since the wind will tend to blow the discharged snow back into the cleared area, it will be necessary to change the chute direction to offset this condition. **NOTE:** Do not throw snow towards a building as hidden objects could be thrown with sufficient force to cause damage.

To engage the self-propelling drive mechanism, proceed as follows:

1. Start the engine as described in paragraph To Start Engine.
2. Using the chute control rod (figure 9), position the discharge chute so as to discharge the snow with the wind.
3. Select proper speed for snow conditions as outlined below and set wheel drive control lever to desired position.
  - A. Number 1 position is for extra deep, wet, heavy snow.
  - B. Number 2 position is for deep, wet, heavy snow. Experience will help make choice between position 1 and 2.
  - C. Number 3 position is for light fluffy snow.
  - D. Number 4 position is mainly for transporting unit over bare or plowed areas, but may be used for very light snow.
  - E. Number 5 position is for transporting unit over bare or plowed areas.

## ⚠ DANGER ⚠

The moment the wheel drive control lever is set in a position other than NEUTRAL and the power clutch lever on the right hand grip is pressed, the snow thrower will move forward.

4. Set the impeller/auger control lever to the ON position.
5. Press the power clutch lever to begin impeller/auger rotation and forward motion. As the unit starts to move, maintain a firm hold on the handles and guide the snow thrower along the cutting path. Do not attempt to push the unit.
6. To disengage the drive mechanism: Release the power clutch lever. Set the wheel drive control lever to the NEUTRAL position. Set the impeller/auger drive control lever to the OFF position.

## ⚠ DANGER ⚠

Do not attempt to remove any item that may become lodged in auger without taking the following precautions:

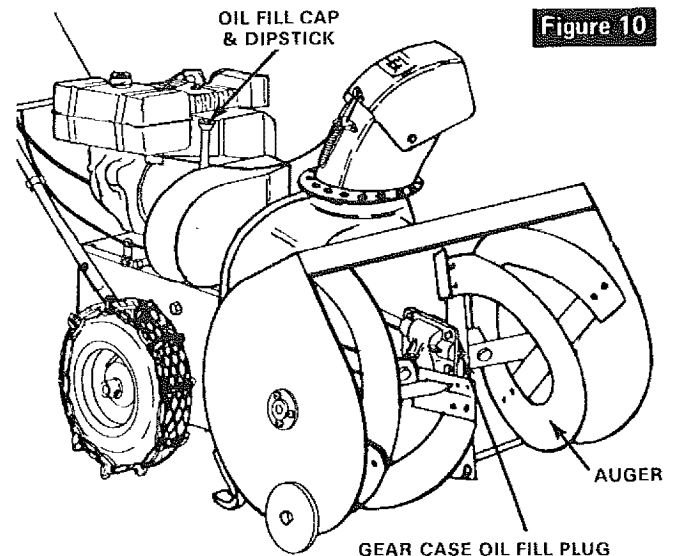
1. Move impeller/auger drive control lever to OFF position.
2. Move wheel drive control lever to NEUTRAL position.
3. Move throttle lever to STOP position.
4. Turn key to OFF position.
5. Remove spark plug.
6. Do not place your hands in the auger or discharge chute. Use a pry bar. The engine compression could cause the auger to rotate sharply when lodged item is removed, if above precautions are not followed.

7. To move unit backwards: Place wheel drive control lever in REVERSE position and press the power clutch lever. To stop backward motion: Release pressure from power clutch lever. Return wheel drive control lever to NEUTRAL position.

## BEFORE STARTING ENGINE

A can of high quality 5W-20 motor oil is supplied with your unit.

1. Remove the oil cap and dipstick (figure 10) and fill crankcase to the FULL line on dipstick (approximately 1½ pints).
2. Replace the oil cap and dipstick and tighten securely.
3. Always check oil level before starting the engine and after each five hours of continuous use. Add oil as required. Do not overfill.



4. Change crankcase oil after the first 2 hours of operation and after each 25 hours of operation thereafter, or at the beginning of each season, whichever comes first.

5. To drain the oil, see paragraph Lubrication in Maintenance section of this manual.

6. Fill gas tank with clean, fresh, unleaded grade automotive gasoline. Leaded regular grade gasoline is an acceptable substitute. **Do not use Ethyl or high octane gasoline.** Be certain container is clean and free from rust or foreign particles. Never use gasoline that may be stale from long periods of storage in the container.

## ⚠ DANGER ⚠

Never fill the gas tank while engine is running or is hot. Immediately wipe off any spilled gasoline before attempting to start engine.

7. Check oil level in gear case by removing oil level fill plug (figure 10). Oil should be visible in hole. If not, insert a funnel that has an adjustable neck and add SEARS SAE-30 (or equivalent) engine oil until it starts to run out of hole. Replace plug and tighten securely.

## TO START ENGINE

The snow thrower engine is equipped with a recoil starter. The operation of this engine is controlled by the throttle control lever (figure 8). Before starting the engine, be certain that you have read and followed all the instructions on the preceding pages.

## ⚠ DANGER ⚠

Never run engine indoors or in enclosed, poorly ventilated areas. Engine exhaust contains carbon monoxide, an odorless and deadly gas.

Keep hands, feet, hair and loose clothing away from any moving parts on engine and snow thrower.

**WARNING** - Temperature of muffler and nearby areas may exceed 150° F. Avoid these areas.

1. Move wheel drive control lever (figure 8) to NEUTRAL position.
2. Move impeller/auger control lever (figure 8) to OFF position.
3. Rotate ignition switch key (figure 9) clockwise to ON position.
4. Move throttle control lever (figure 9) to FAST position.
5. Move choke lever (figure 9) to FULL CHOKE position.  
**NOTE:** Do not choke a warm engine.
6. Push primer button (figure 9) 2 times. **NOTE:** Do not prime a warm engine.
7. Pull starter handle (figure 9) rapidly. **NOTE:** Do not allow starter handle to snap back but rewind slowly while keeping a firm hold of starter handle.

## ⚠ DANGER ⚠

Do not put hands, feet or loose clothing in or near the deflector chute or auger housing while engine is running.

8. As engine warms up and begins to operate evenly, move choke lever slowly to OFF position. If engine falters, return to ½ choke until it runs smoothly, then move to OFF

choke position. **NOTE:** Allow the engine to warm up for a few minutes as the engine will not develop full power until it reaches operating temperature.

9. Run engine at or near top speed. **NOTE:** To help prevent possible freeze-up of rewind starter, proceed as follows after each snow blowing job:

- A. **With engine running**, pull starter rope hard with a continuous full arm stroke three or four times. Pulling of starter rope will produce a loud clattering sound. This is not harmful to the engine or starter.

10. To stop forward motion, release power clutch lever (figure 8) on right handle. To stop engine, move throttle control lever to STOP position and move ignition switch key to OFF position. **NOTE:** To help prevent possible freeze-up of engine controls, proceed as follows after each snow blowing job:

- A. **With engine not running**, wipe all snow and moisture from carburetor cover in area of control levers. Also move control levers backward and forward several times.

**IMPORTANT:** After each use of the snow thrower, stop the engine, remove the ignition key, remove all accumulated snow from the unit and wipe clean. Store the snow thrower in a protected area.

**NOTE:** To prevent or cure icing of cables and control, a de-icer can be used. De-icer is available in the automotive department of your nearest SEARS Store.

## ⚠ CAUTION ⚠

Pay close attention to instruction on the de-icer container. Also be extra careful that no de-icer comes in contact with muffler or any other hot area on or near engine.

## ADJUSTMENTS

## ⚠ CAUTION ⚠

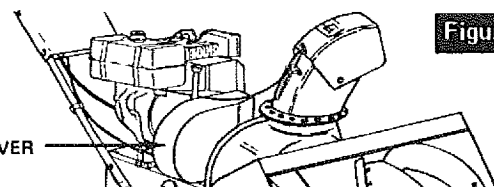
Always remove the spark plug before making any repairs or adjustments.

## DRIVE BELT ADJUSTMENT

This unit is equipped with two drive belts located just in front of engine under belt cover (figure 11). Figure 12 shows both belts and idler pulleys. Belt nearest engine is unit drive (wheels) belt. Other belt (farthest from engine) is impeller/auger drive belt.

If adjustment becomes necessary due to wear or stretch of either belt:

1. Remove belt cover (figure 11).

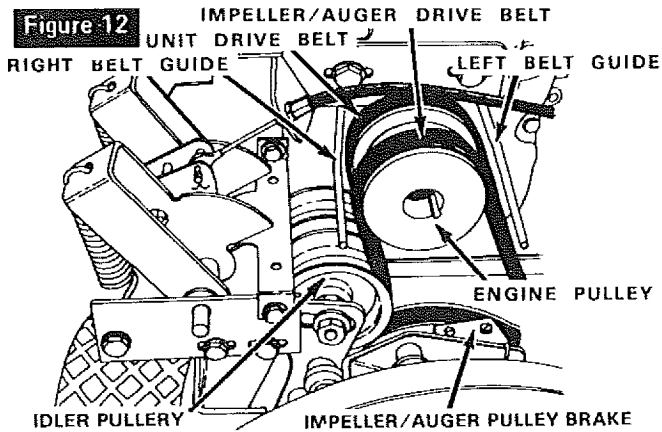


2. Loosen locknut on idler pulley (figure 12) and push idler pulley toward belt until sufficient tension is achieved. Tighten securely.



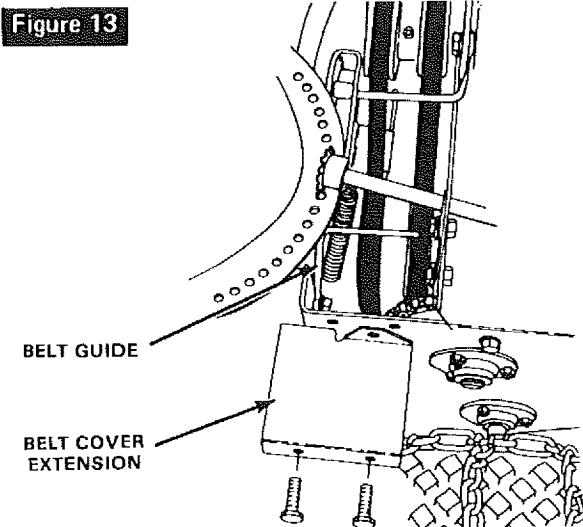
3. Check belt guides (figure 12) for proper clearances as follows: **IMPORTANT: Never loosen both belt guides at same time. Adjust one belt guide, retighten, then adjust other guide.**

- A. Place impeller/auger lever in ENGAGE position.
- B. Have someone hold power clutch lever down to engaged position.
- C. Adjust left belt guide, if necessary, to a clearance between guide and belt of not more than 1/16 inch.
- D. Adjust right belt guide, if necessary, to a clearance between guide and belt of not less than 1/8 inch or more than 1/4 inch.
- E. Be sure to tighten belt guide mounting screws securely to prevent guides from slipping from adjusted positions.



4. A third belt guide is located under belt cover extension (figure 13). To adjust this belt guide, proceed as follows:

- A. Remove two screws that hold belt cover extension in place and remove extension.
- B. Place impeller/auger lever in ENGAGE position.
- C. Have someone hold power clutch lever down to engaged position.
- D. Loosen nut holding belt guide (figure 13) and adjust guide to a clearance from belt of not more than 1/16 inch.
- E. Tighten nut and replace belt cover extension and belt cover.



5. A brake (figure 12) that stops impeller/auger pulley when power clutch lever is released is not adjustable. When brake is operating properly, the impeller/auger should stop within 5 seconds after power clutch lever is released. If brake is not operating properly, replace pad as follows:

- A. Use original equipment part. See **Unit Repair Parts** section of this manual for proper part.
- B. Remove two screws from top of brake arm. Replace worn pad with new pad and attach with removed screws.

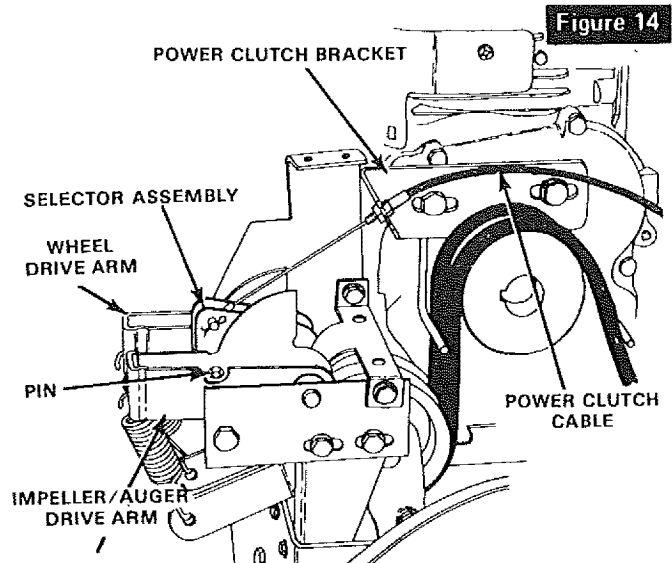
## CHUTE DEFLECTOR CABLE ADJUSTMENT

If adjustment becomes necessary, adjust as instructed in **Step 4** of paragraph **Controls Assembly** in **Assembly** section of this manual.

## POWER CLUTCH CABLE ADJUSTMENT

If adjustment becomes necessary, adjust cable length as instructed in **Step 7** in paragraph **Controls Assembly** in **Assembly** section of this manual. If further adjustment is required, proceed as follows:

1. Remove belt cover (figure 11).
2. Loosen screws that hold belt guides and power clutch bracket (figure 14).
3. Move power clutch bracket until pin in selector assembly (figure 14) is centered in holes in impeller/auger and wheel drive arms.
4. Retighten screws.
5. Readjust belt guides as instructed in **Steps 3 and 4** in paragraph **Drive Belt Adjustment**. **NOTE:** Loosen and adjust one belt guide at a time or power clutch bracket may move causing adjustment to be lost.



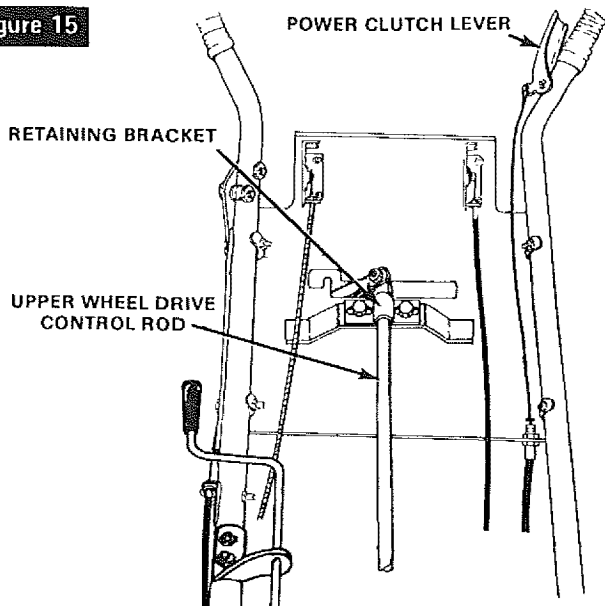
## WHEEL DRIVE CONTROL ADJUSTMENT

Adjustment to wheel drive control rod will be necessary if:

1. Unit is not in neutral when wheel drive control lever is in NEUTRAL position.
2. Reverse position can not be fully reached.
3. Fifth (5th) gear can not be fully reached. If any of these three conditions exist, adjust as follows:
  - A. With engine running and power clutch lever depressed, locate neutral position of wheel drive control lever.

- B. Leave wheel drive control lever in position where neutral was obtained and release power clutch lever. Shut off engine.
- C. Loosen screws in retaining bracket (figure 15) at top end of wheel drive control rod (under control panel).
- D. Slide retaining bracket and rod left or right until wheel drive control lever is in proper neutral position. Tighten screws in retaining bracket.
- E. Start engine and check adjustment by moving lever to each position. **NOTE:** Be sure to check to see that NEUTRAL is properly reached from both directions (from reverse and from forward gear).

**Figure 15**

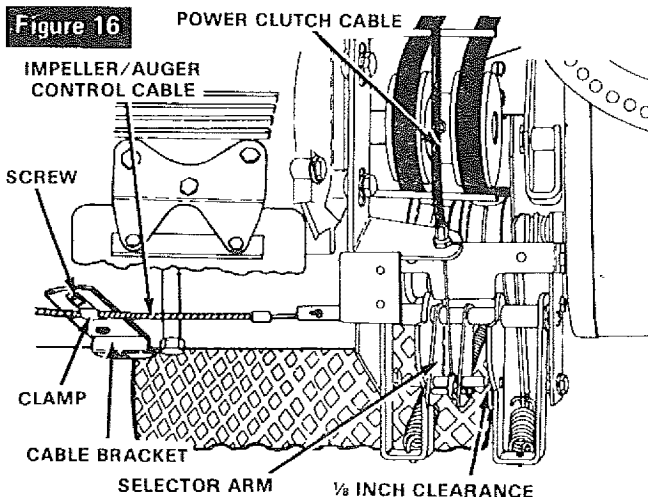


## IMPELLER/AUGER CONTROL CABLE ADJUSTMENT

If impeller/auger control should need adjustment because impeller/auger will not engage or will not disengage, adjust as follows:

1. Remove belt cover (figure 11).

**Figure 16**



2. Move impeller/auger control lever from OFF to ENGAGE and check action of selector arm (figure 16). When impeller/auger control lever is in ENGAGE position, pin through selector arm should fully engage wheel drive arm and impeller/auger drive arm. When lever is in OFF position,

pin through selector arm should engage wheel drive arm only and clear impeller/auger drive arm by at least 1/8 inch. To adjust to these positions:

- A. Loosen screw that clamps impeller/auger control cable to cable bracket (figure 16).
- B. Move cable forward or backward in clamp to obtain proper position mentioned above.
- C. Reclamp cable by tightening loosened screw.

## **⚠ DANGER ⚠**

Never attempt to manually stop auger from turning.

## CARBURETOR ADJUSTMENT

HIGH SPEED and IDLE ADJUST NEEDLES are pre-set at the factory and re-adjustment should not be necessary. **NOTE:** If you think the carburetor needs adjusting, contact your nearest SEARS Service Center who has the proper equipment and experience to make any necessary adjustments.

## **⚠ CAUTION ⚠**

Never tamper with engine governor which is factory set for proper engine speed. Over-speeding engine above factory high speed setting can be dangerous. If you think the engine governed high speed needs adjusting, contact your nearest SEARS Service Center who has the proper equipment and experience to make any necessary adjustments.

Changing of engine governed speed will void engine warranty.

## SPARK PLUG ADJUSTMENT

Check the spark plug periodically and reset spark plug gap to 0.030 inch using a wire feeler gauge.

The condition of the spark plug may be determined by color. A carbonized plug is black and burnt plugs are greyish in color, whereas a normal functioning spark plug is brown. If a new spark plug is required, refer to the Engine Repair Parts section for proper replacement spark plug.

Before installing spark plug, coat threads lightly with graphite grease to insure easy removal.

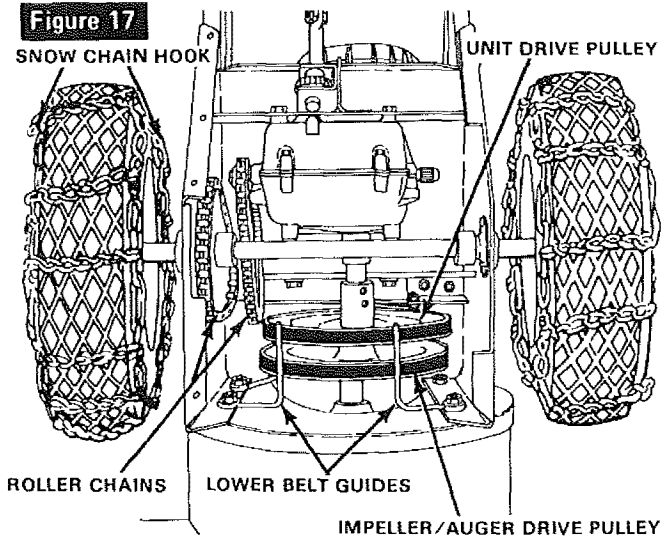
## MAINTENANCE

### DRIVE BELT REPLACEMENT

The drive belts on this unit are of special construction and should be replaced with original equipment belts available from your nearest SEARS Store or Service Center.

To Replace Unit Drive Belt (belt nearest engine):

1. Remove belt cover (figure 11).
2. Loosen screw holding left belt guide (figure 12) and swing guide away from pulley. Retighten screw.
3. Loosen screw holding right belt guide (figure 12) and swing guide away from pulley. Retighten screw.
4. Roll belt off engine pulley. **NOTE:** It will be necessary to roll impeller/auger drive belt off engine pulley to allow unit drive belt to be removed from engine pulley.
5. Remove belt by threading up between large drive pulleys.
6. Install new belt in reverse order.

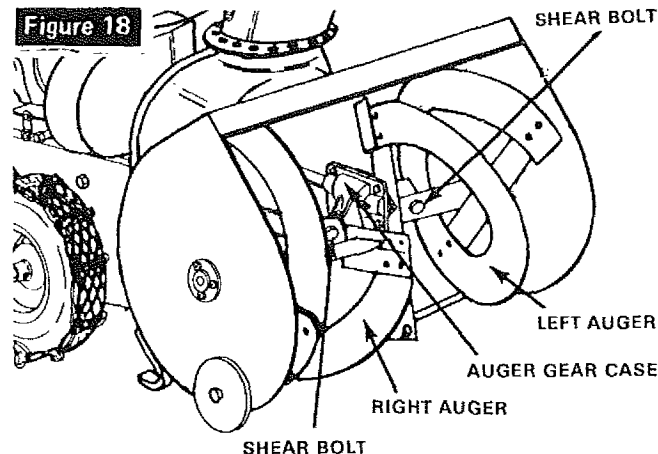


**To Replace Impeller/Auger Drive Belt (belt farthest from engine):**

1. Remove belt cover (figure 11).
2. Stand unit up on auger end, remove screws from bottom cover and remove cover.
3. Loosen screws holding lower belt guides (figure 17) and swing guides away from belt.
4. Roll belt off impeller/auger drive pulley and engine pulley and remove between drive pulleys.
5. Install new belt in reverse order.
6. Move lower belt guides back to within 1/16 inch of impeller/auger drive pulley and tighten screws.
7. Replace bottom cover and return unit to operating position.
8. Adjust right and left belt guides (figure 12) as instructed in **Step 3** in paragraph **Drive Belt Adjustment** in **Adjustment** section of this manual.
9. Replace belt cover.

**SHEAR BOLT REPLACEMENT**

The main auger assembly is made up of a right and left auger. Each is secured with a special bolt (figure 18) that acts as a shear bolt. These bolts are designed to break if an object becomes lodged in the auger. Three spare shear bolts and nuts have been furnished with your unit. If additional bolts are required, order genuine replacement bolts. Use of a harder bolt will destroy the protection provided by this special bolt. To replace a broken shear bolt, proceed as follows:

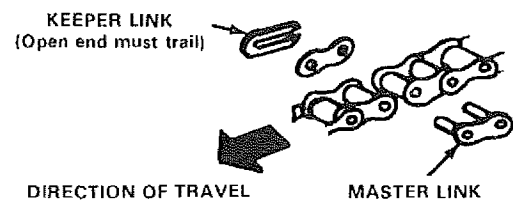


1. Remove the parts of the broken bolt.
2. Align the hole in the auger with the hole in the auger shaft. Install new shear bolt.

**ROLLER CHAIN REPLACEMENT**

There are two roller chains on this unit as shown in figure 17. Bottom cover will have to be removed to reach chains.

1. Stand unit up on auger end, remove screws from bottom cover and remove cover.
2. Locate master link (figure 19) in chain to be replaced.
3. Check position of open end of keeper link (figure 19) so that replacement link can be installed in the same manner. Open end of keeper link must be in trailing position when chain is operating in direction required for forward motion of unit.
4. Remove master link and remove chain.
5. Install new chain in reverse order of removal.



**Figure 19**

**TRANSMISSION REPLACEMENT**

The replacement of the transmission on this unit is a major service operation and should be done by a trained technician. The **Transmission Repair Parts** section of this manual contains a list of replacement parts and illustrations to assist the trained technician in making repairs and ordering proper replacement parts.

**SNOW CHAIN REMOVAL**

To remove the snow chains, release the chain hooks (figure 17). Flatten the chain out on the ground and push unit off the chain. Illustration is the reverse of removal.

**LUBRICATION**

For lubrication points, frequency of lubrication and type of lubricant, see **Lubrication Chart**.

1. Check crankcase oil level before starting engine and after each 5 hours of continuous use. Add SEARS 5W-30 motor oil or equivalent as required. Change crankcase oil after first 2 hours of operation and every 25 hours of operation thereafter, or at beginning of each season. **NOTE:** SEARS 5W-30 or 10W motor oil (or equivalent) are acceptable substitutes.

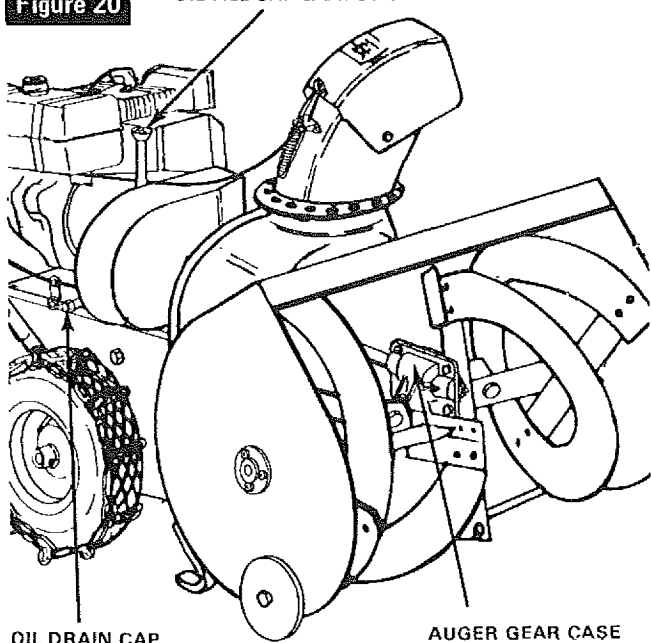
**To Drain Oil, Proceed as Follows:**

- A. Remove oil fill cap and dipstick (figure 20).
- B. Remove oil drain cap (figure 20).
- C. Tip unit toward oil drain cap and drain oil into a suitable container. **NOTE:** Oil will drain more freely when warm.
- D. Replace oil drain cap securely and fill crankcase to proper level shown on dipstick (approximately 1½ pints).

2. Check auger gear case oil level before each use by removing oil level plug as shown in **Lubrication Chart**. Oil should be visible in hole. If oil is required, remove oil fill plug and add SEARS SAE 30 engine oil until oil begins to run out oil level hole. Replace plug and tighten securely.

**Figure 20**

OIL FILL CAP & DIPSTICK



3. The transmission has been factory lubricated for life. If, for some reason, lubricant should leak out, have transmission checked by a competent repairman.

### ENGINE SERVICE

Unless the operator is fully qualified to make engine adjustments and repairs, it is recommended that such work be done by technicians trained to work on snow thrower type gasoline engines.

The Engine Repair Parts section of this manual contains a list of engine replacement parts and illustrations to assist the trained technicians in making repairs and ordering proper replacement parts.

## STORAGE

The snow thrower should be immediately prepared for storage at the end of the season or if the unit is to be un-used for 30 days or more.

### ENGINE STORAGE

## DANGER

Never store engine with fuel in tank indoors or in enclosed, poorly ventilated enclosures, where fuel fumes may reach an open flame, spark or pilot light as on a furnace, water heater, clothes dryer, etc.

Gasoline, if permitted to stand un-used for extended periods (30 days or more), may develop gummy deposits which can adversely affect the engine carburetor and cause engine malfunction. To avoid this condition, proceed as follows:

## DANGER

Handle gasoline carefully. It is highly flammable and careless use could result in serious fire damage to your person and/or property.

1. Prior to shut down for 30 days or more, and for seasonal storage, drain gasoline from fuel tank.

## DANGER

Drain fuel into approved container outdoors, away from open flame.

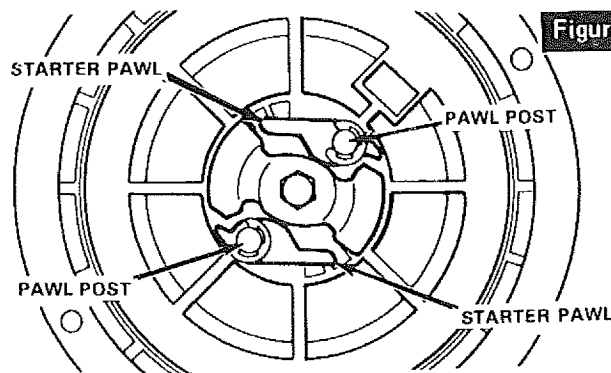
2. Run engine until fuel tank is empty and engine stops due to lack of fuel.

3. Remove spark plug and pour one (1) ounce of engine oil through spark plug hole into cylinder. Crank engine several times to distribute oil. Replace spark plug.

4. Store unit in wheel down, operating position. If unit is stored in any other position, oil from crankcase could enter cylinder head, causing a service problem.

5. When storing unit at the end of the snow blowing season, service REWIND STARTER as follows:

- A. Remove rewind starter from engine and brush away accumulation of dirt and debris from starter pawl and pawl post (figure 21).
- B. Apply a few drops of engine oil to each pawl post and rotate starter a few times.
- C. Reinstall starter on engine. Be sure the four starter retaining nuts are tightened securely.



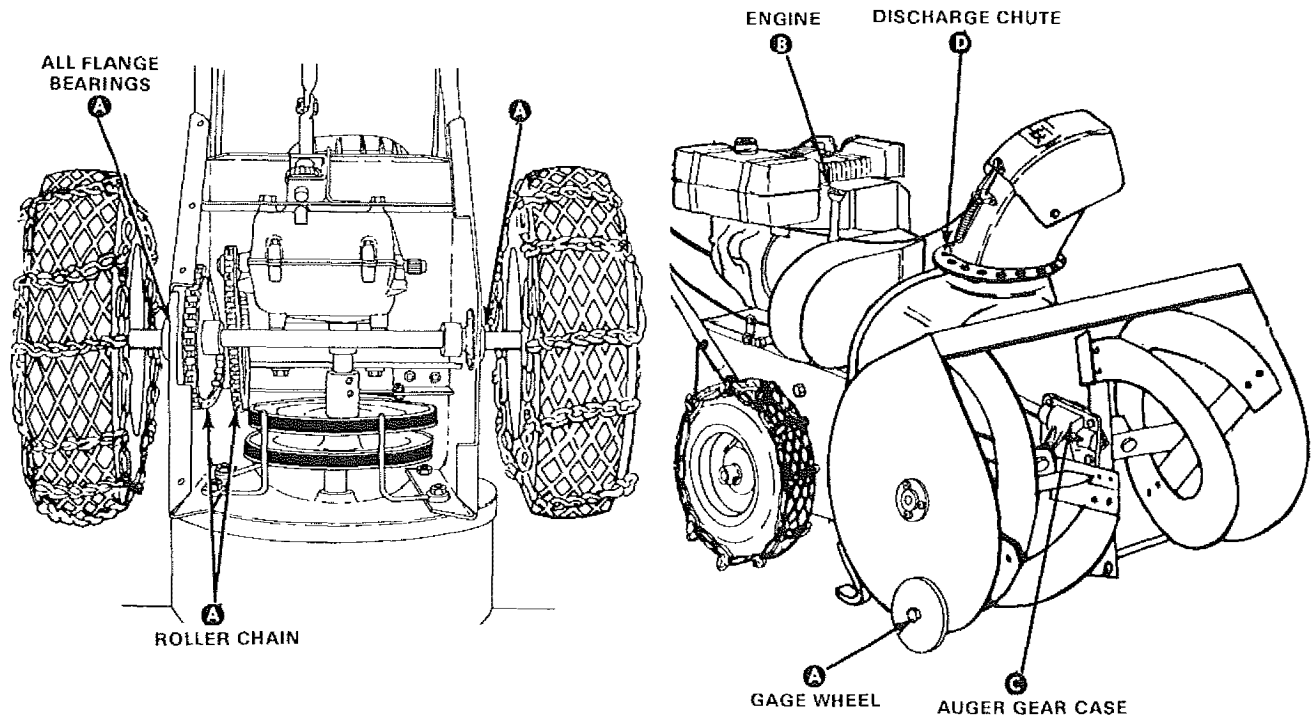
**Figure 21**

### UNIT STORAGE

- 1. Clean the unit thoroughly; remove all debris and wipe the unit dry.
- 2. Inspect the snow thrower for worn or damaged parts, tighten all loose hardware.
- 3. Oil all points described in paragraph **Lubrication**.
- 4. Store the snow thrower in a protected area and cover the unit for additional protection.

A yearly checkup or tuneup by the SEARS Service Department is a good way of insuring that your snow thrower will provide maximum performance for the next season.

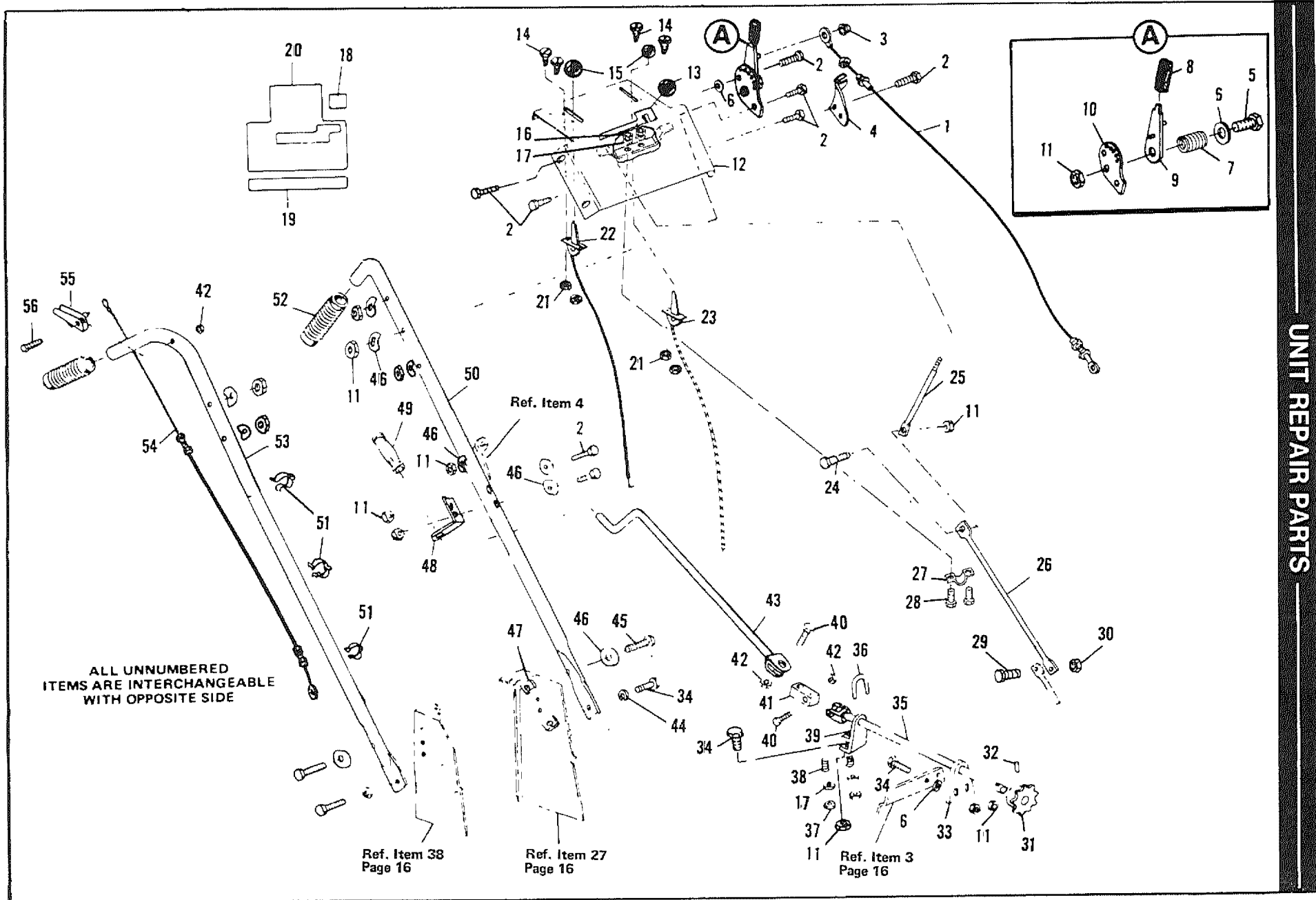
## LUBRICATION CHART



- A** Add Sears S.A.E. 10W oil (or equivalent) every 2 hours and after each use.
- B** Add Sears 5W-20 oil (or equivalent) as required. Check every 5 hours and before each use.
- C** Add Sears S.A.E. 30W oil (or equivalent) as required. Check before each use.
- D** Remove chute and coat with clinging type grease such as lubriplate once each season.

For Service Helps Chart, see page 27.

CRAFTSMAN 24" SNOW THROWER MODEL NUMBER 536.918300



UNIT REPAIR PARTS

## CRAFTSMAN 24" SNOW THROWER MODEL NUMBER 536.918300

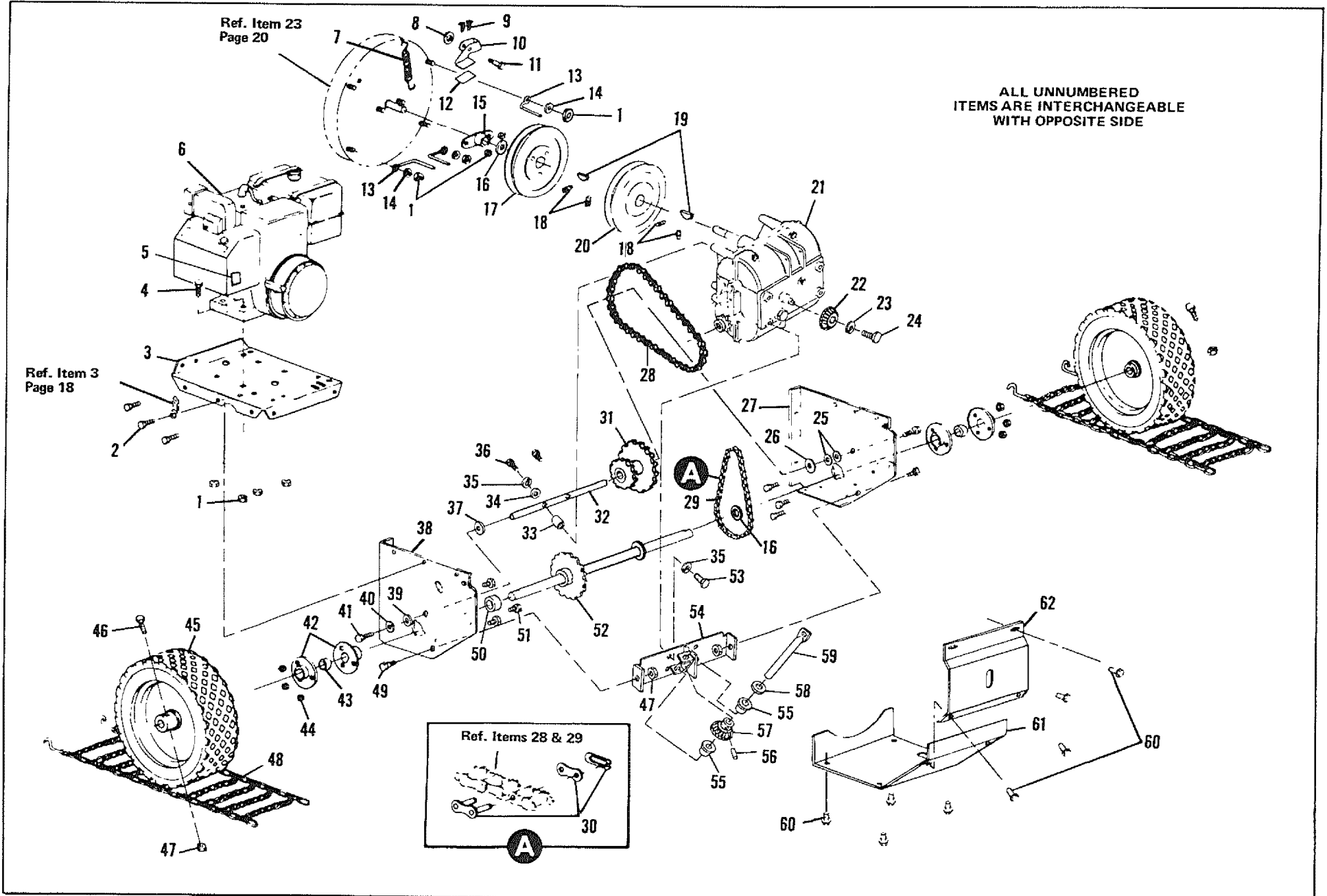
| Key No. | Part No. | Description                         |
|---------|----------|-------------------------------------|
| 1       | 49551    | Cable, Impeller/Auger Control       |
| 2       | 122052   | *Screw, Hex Hd, 5/16-18 x 1 3/4 In. |
| 3       | 49106    | Push Nut, 3/16 In.                  |
| 4       | 49569    | Bracket, Chute Deflector Cable      |
| 5       | 122033   | *Screw, Hex Hd, 5/16-18 x 1 3/8 In. |
| 6       | 996407   | *Flatwasher, 5/16 In. I.D.          |
| 7       | 25644    | Spring                              |
| 8       | 49576    | Hand Grip                           |
| 9       | 49557    | Lever Assembly, Chute Deflector     |
| 10      | 49558    | Bracket, Chute Deflector Lever      |
| 11      | 9413447  | Locknut, 5/16-18 Thd                |
| 12      | 50168    | Panel, Control                      |
| 13      | 22822    | Knob, Wheel Drive Control Lever     |
| 14      | 443874   | *Screw, Hex Hd, No. 10-24 x 1/2 In. |
| 15      | 50607    | Knob, Control Lever                 |
| 16      | 997316   | Locknut, No. 10-24 Thd              |
| 17      | 9417373  | *Flatwasher, No. 10                 |
| 18      | 67194    | Decal, Chute Control                |
| 19      | 68416    | Decal, Craftsman                    |
| 20      | 68413    | Decal, Control Panel                |

| Key No. | Part No. | Description                         |
|---------|----------|-------------------------------------|
| 21      | 271166   | Locknut, Keps, No. 10-24 Thd        |
| 22      | 50198    | Control Assembly, Impeller/Auger    |
| 23      | 50197    | Control Assembly, Throttle          |
| 24      | 25494    | Shoulder Bolt                       |
| 25      | 50393    | Lever Assembly, Wheel Drive         |
| 26      | 50146    | Rod, Wheel Drive, Upper             |
| 27      | 50152    | Retainer Bracket, Wheel Drive Rod   |
| 28      | 9423771  | *Screw, Hex Hd, No. 10-24 x 1/2 In. |
| 29      | 122119   | *Screw, Hex Hd, 3/8-16 x 3/4 In.    |
| 30      | 9413534  | Locknut, 3/8-16 Thd                 |
| 31      | 48395    | Sprocket, 9 Tooth                   |
| 32      | 455481   | *Roll Pin, 3/16 x 1 In.             |
| 33      | 48400    | Bracket, Lower Chute Control Rod    |
| 34      | 120228   | *Screw, Hex Hd, 5/16-18 x 5/8 In.   |
| 35      | 48399    | Rod, Chute Control, Lever           |
| 36      | 23940    | U-Bolt                              |
| 37      | 997319   | Locknut, No. 10-32 Thd              |
| 38      | 23939    | Spring                              |

| Key No. | Part No. | Description                            |
|---------|----------|--|
| 39      | 48402    | Bracket, Lower Chute Control Rod, Rear |
| 40      | 180022   | *Screw, Hex Hd, 1/4-20 x 1 In.         |
| 41      | 47323    | Pivot Block                            |
| 42      | 9424215  | Locknut, 1/4-20 Thd                    |
| 43      | 48405    | Rod, Chute Control, Upper              |
| 44      | 120638   | *Lockwasher, Split, 5/16 In.           |
| 45      | 122017   | *Screw, Hex Hd, 5/16-18 x 1 In.        |
| 46      | 22025    | Washer, Formed                         |
| 47      | 40631    | Nut, Retain                            |
| 48      | 48403    | Bracket, Upper Chute Control Rod       |
| 49      | 48441    | Hand Grip                              |
| 50      | 49545    | Handle, Left                           |
| 51      | 47422    | Clamp, Cable                           |
| 52      | 48641    | Hand Grip                              |
| 53      | 49544    | Handle, Right                          |
| 54      | 49564    | Cable, Power Clutch                    |
| 55      | 49008    | Lever Assembly, Power Clutch           |
| 56      | 133058   | *Screw, Rd Hd, 1/4-20 x 3/4 In.        |
|         | 61817    | Owner's Manual (Not Illust.)           |

\*Standard Hardware Items - May Be Purchased Locally.

# CRAFTSMAN 24" SNOW THROWER MODEL NUMBER 536.918300



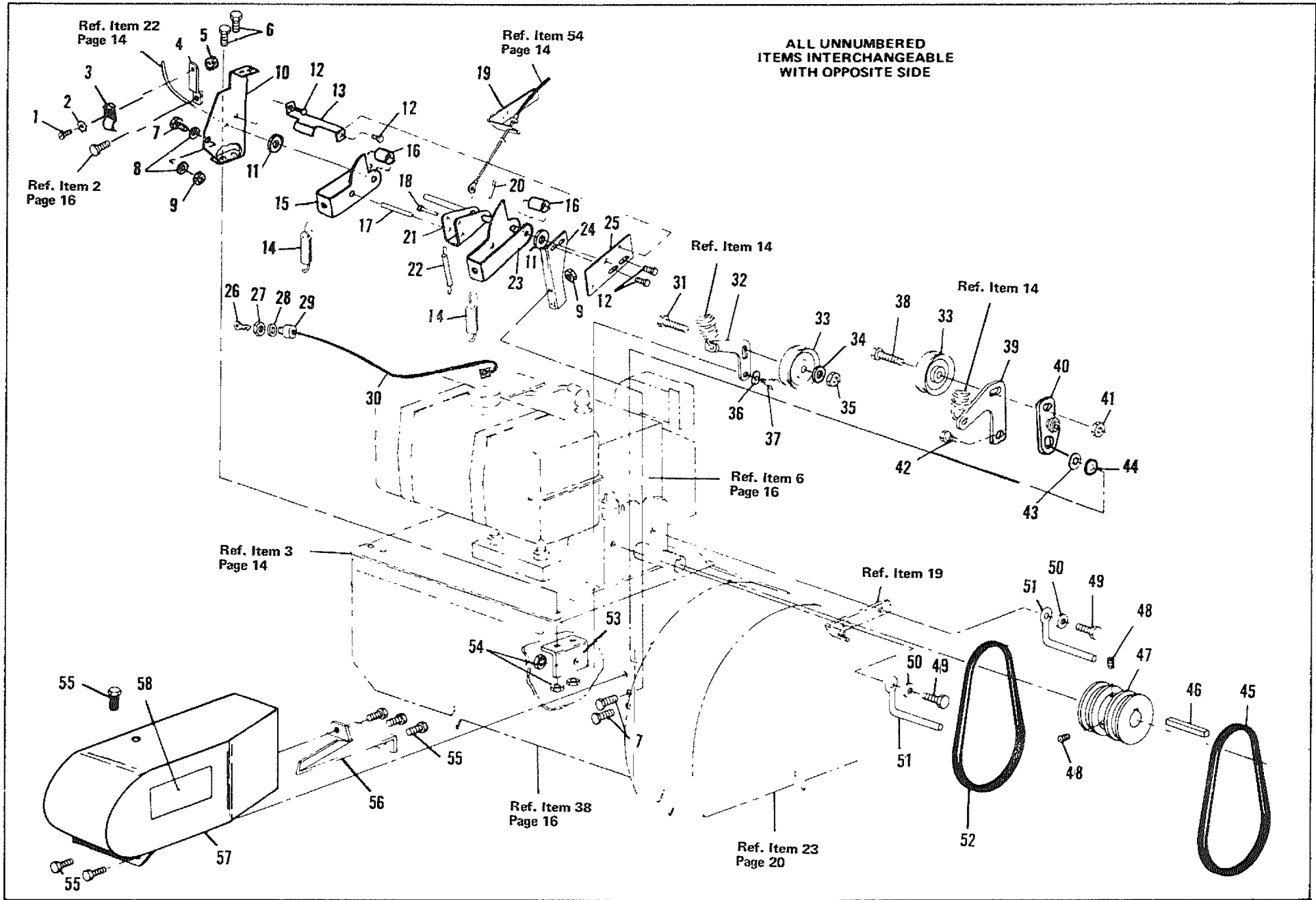


## CRAFTSMAN 24" SNOW THROWER MODEL NUMBER 536.918300

| Key No. | Part No. | Description  | Key No. | Part No. | Description                                   | Key No. | Part No. | Description   |
|---------|----------|--|---------|----------|---|---------|----------|---|
| 1       | 9413534  | Locknut, 3/8-16 Thd  | 22      | 50150    | Gear, Miter Drive                             | 44      | 9424215  | Locknut, 1/4-20 Thd                                   |
| 2       | 42619    | Screw, Taptite, 3/8-16 x 1/2 In.   | 23      | 120380   | *Lockwasher, Split, 1/4 In. I.D.              | 45      | 48445    | Wheel & Tire Assembly                                 |
| 3       | 49454    | Plate, Engine Mount  | 24      | 181566   | *Screw, Hex Hd, 1/4-28 x 3/4 In.              | 46      | 169      | *Screw, Hex Hd, 5/16-18 x 1 5/8 In.                   |
| 4       | 122119   | *Screw, Hex Hd, 3/8-16 x 3/4 In.   | 25      | 36625    | Ring, Retaining                               | 47      | 9413447  | Locknut, 5/16-18 Thd                                  |
| 5       | 68423    | Decal, Key, On/Off   | 26      | 50154    | Washer, Thrust                                | 48      | 20712    | Chains, Snow (Set of Two)                             |
| 6       | 15316    | Engine, Model No. 143.696102<br>(See Engine Repair Parts List)             | 27      | 50170    | Side Frame Assembly, Right                    | 49      | 180075   | *Screw, Hex Hd, 5/16-18 x 5/8 In.                     |
| 7       | 48422    | Spring   | 28      | 50641    | Roller Chain Assembly                         | 50      | 41709    | Spacer  |
| 8       | 138538   | *Lockwasher, Internal Tooth,<br>5/16 In. I.D.                              | 29      | 50640    | Roller Chain Assembly                         | 51      | 36602    | *Bolt, Carriage, 1/4-20 x 5/8 In.                     |
| 9       | 35055    | Screw, Taptite, No. 10-24 x 1/2 In.  | 30      | 20307    | Link, Connector                               | 52      | 50624    | Axle & Sprocket Assembly                              |
| 10      | 48424    | Bracket, Brake   | 31      | 50542    | Sprocket & Bearing Assembly                   | 53      | 35498    | Screw, Hex Washer Hd Tap,<br>5/16-18 x 3/4 In.        |
| 11      | 41727    | Shoulder Bolt  | 32      | 50155    | Shaft, Intermediate                           | 54      | 50163    | Plate Assembly, Transmission<br>Mounting              |
| 12      | 49577    | Pad, Brake   | 33      | 50149    | Spacer  | 55      | 50148    | Bearing, Flanged                                      |
| 13      | 49530    | Belt Guide, Lower  | 34      | 996407   | *Flatwasher, 5/16 In. I.D.                    | 56      | 454512   | Pin, Spring, 3/16 x 3/4 In.                           |
| 14      | 274517   | *Flatwasher, 3/8 In. I.D.  | 35      | 120638   | *Lockwasher, Split, 5/16 In. I.D.             | 57      | 50151    | Gear Miter Driver                                     |
| 15      | 40616    | Bearing, Impeller  | 36      | 180087   | Screw, Hex Hd, 5/16-18 x 2 In.                | 58      | 39024    | Flatwasher, 1/2 In. I.D.                              |
| 16      | 25177    | *Flatwasher, 3/4 In. I.D.  | 37      | 50153    | Washer, Thrust                                | 59      | 50147    | Rod, Wheel Drive, Lower                               |
| 17      | 48388    | Pulley, Impeller/Auger   | 38      | 50169    | Side Frame Assembly, Left                     | 60      | 35144    | Screw, Hex Hd Slotted Taptite,<br>No. 10-24 x 3/8 In. |
| 18      | 102883   | *Set Screw, 5/16-18 x 3/4 In.  | 39      | 41891    | Washer, Bow                                   | 61      | 50166    | Cover, Bottom   |
| 19      | 27324    | Key, Hi-Pro, No. 606   | 40      | 138485   | *Lockwasher, External Tooth,<br>5/16 In. I.D. | 62      | 50164    | Cover, Rear   |
| 20      | 50158    | Pulley, Transmission   | 41      | 41890    | Shoulder Bolt                                 |         |          |   |
| 21      | 50171    | Transmission, Model No. 143.735<br>(See Transmission Repair<br>Parts List) | 42      | 25072    | Disc, Bearing Retainer                        |         |          |   |
|         |          |  | 43      | 48666    | Bearing, Self-Aligning                        |         |          |   |

\*Standard Hardware Items - May Be Purchased Locally.

# CRAFTSMAN 24" SNOW THROWER MODEL NUMBER 536.918300



## CRAFTSMAN 24" SNOW THROWER MODEL NUMBER 536.918300

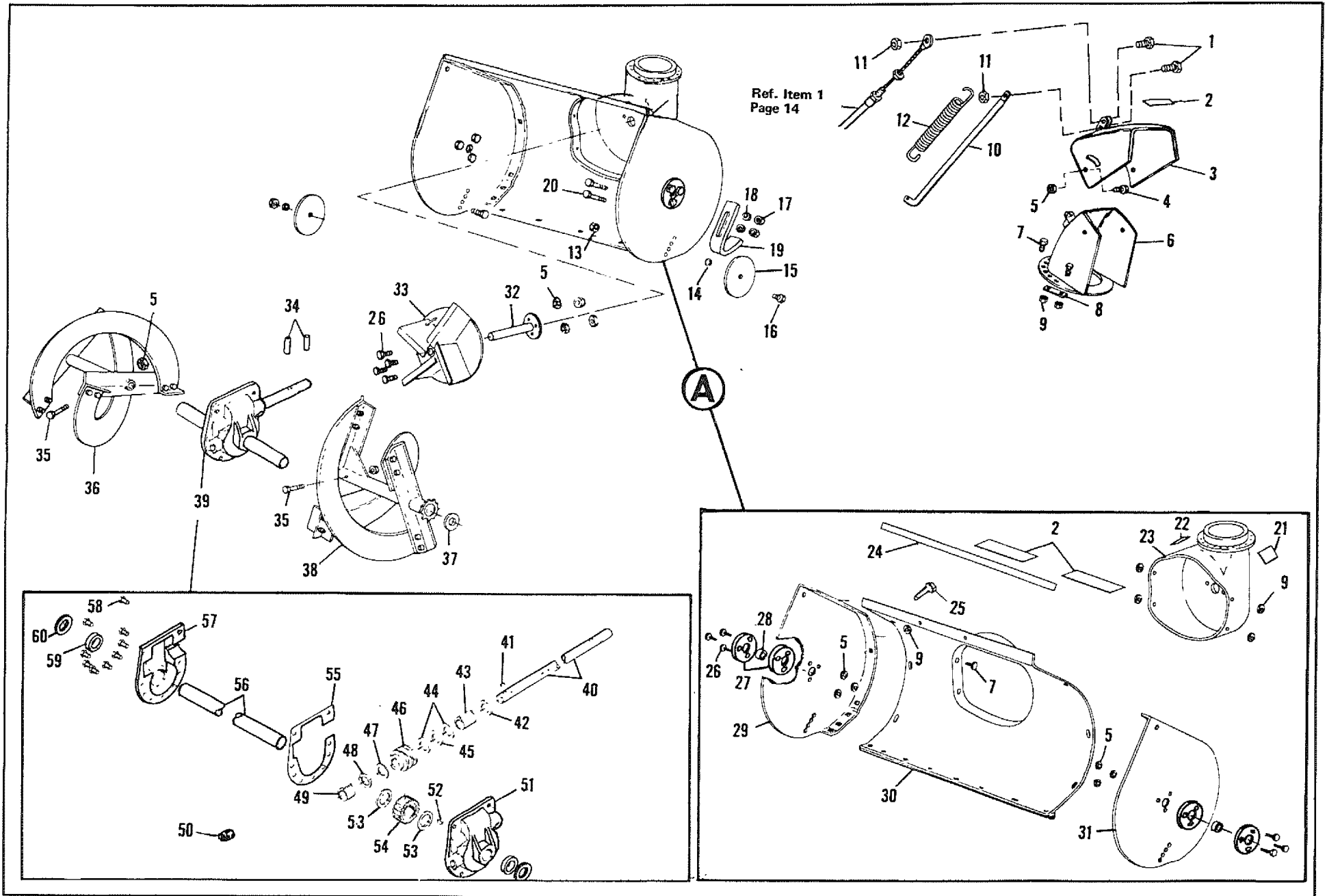
| Key No. | Part No. | Description  |
|---------|----------|--|
| 1       | 159920   | Screw, No. 10-24 x 1/2 In.                         |
| 2       | 138479   | Lockwasher, External Tooth                         |
| 3       | 41652    | Clip, Wire   |
| 4       | 49012    | Bracket, Impeller/Auger Cable                      |
| 5       | 271166   | Nut, Keps, No. 10-24 Thd                           |
| 6       | 120228   | *Screw, Hex Hd, 5/16-18 x 3/8 In.                  |
| 7       | 180016   | Screw, Hex Hd, 1/4-20 x 1/2 In.                    |
| 8       | 120380   | Lockwasher, Split                                  |
| 9       | 9424215  | Locknut, 1/4-20 Thd                                |
| 10      | 48994    | Plate, Idler Mount                                 |
| 11      | 120394   | Washer   |
| 12      | 40886    | Screw, Taptite, Hex Washer Hd,<br>1/4-20 x 3/8 In. |
| 13      | 49018    | Brace  |
| 14      | 49527    | Spring, Idler                                      |
| 15      | 49010    | Arm, Wheel Drive                                   |
| 16      | 49531    | Spacer   |
| 17      | 456836   | Pin, 1/4 x 2 1/4 In.                               |
| 18      | 49014    | Clevis Pin   |
| 19      | 48991    | Bracket, Power Clutch Cable                        |

| Key No. | Part No. | Description                       |
|---------|----------|-----------------------------------|
| 20      | 121223   | Cotter Pin, 1/16 x 3/4 In.        |
| 21      | 49019    | Selector Assy                     |
| 22      | 24347    | Spring                            |
| 23      | 49009    | Arm, Impeller/Auger Drive         |
| 24      | 49016    | Bracket, Mounting                 |
| 25      | 49017    | Plate                             |
| 26      | 36285    | Key, Ignition                     |
| 27      | 48140    | Locknut (Switch Part)             |
| 28      | 138557   | Lockwasher (Switch Part)          |
| 29      | 46376    | Switch (Incl. Items 26, 27 & 28)  |
| 30      | 47410    | Wire Assembly, Ignition           |
| 31      | 45892    | Carriage Bolt, 3/8-16 x 1 1/2 In. |
| 32      | 49504    | Idler Arm, Primary                |
| 33      | 50610    | Pulley, Idler                     |
| 34      | 120382   | Lockwasher, Split 3/8 In.         |
| 35      | 124829   | Nut, Hex Jam, 3/8-16 Thd          |
| 36      | 3140     | Washer, Wave                      |
| 37      | 46511    | Bolt, Shoulder                    |
| 38      | 120918   | Screw, Hex Hd, 3/8-16 x 1 1/2 In. |
| 39      | 49505    | Idler Arm, Auger                  |

| Key No. | Part No. | Description  |
|---------|----------|--|
| 40      | 50608    | Roller Arm Assembly                                |
| 41      | 9413534  | *Locknut, 3/8-16 Thd                               |
| 42      | 41727    | Bolt Shoulder                                      |
| 43      | 138538   | Lockwasher, Internal Tooth                         |
| 44      | 41728    | Spacer   |
| 45      | 49581    | V-Belt   |
| 46      | 26794    | Key, Square, 1/4 x 1 1/2 In.                       |
| 47      | 44917    | Pulley, Engine                                     |
| 48      | 998503   | *Set Screw, 5/16-18 x 1/4 In.                      |
| 49      | 120741   | *Screw, Hex Hd, 5/16-24 x 3/4 In.                  |
| 50      | 120638   | *Lockwasher, Split, 5/16 I.D.                      |
| 51      | 49822    | Belt Guide, L.H.                                   |
| 52      | 49570    | V-Belt   |
| 53      | 48999    | Mounting Bracket Auxiliary                         |
| 54      | 9413447  | *Locknut, 5/16-18 Thd                              |
| 55      | 35144    | Screw, Slotted Hex Hd, Taptite,<br>10-24 x 3/8 In. |
| 56      | 46161    | Extension, Belt Cover                              |
| 57      | 48534    | Cover, Belt  |
| 58      | 68415    | Decal  |

\*Standard Hardware Items - May Be Purchased Locally.

# CRAFTSMAN 24" SNOW THROWER MODEL NUMBER 536.918300



## CRAFTSMAN 24" SNOW THROWER MODEL NUMBER 536.918300

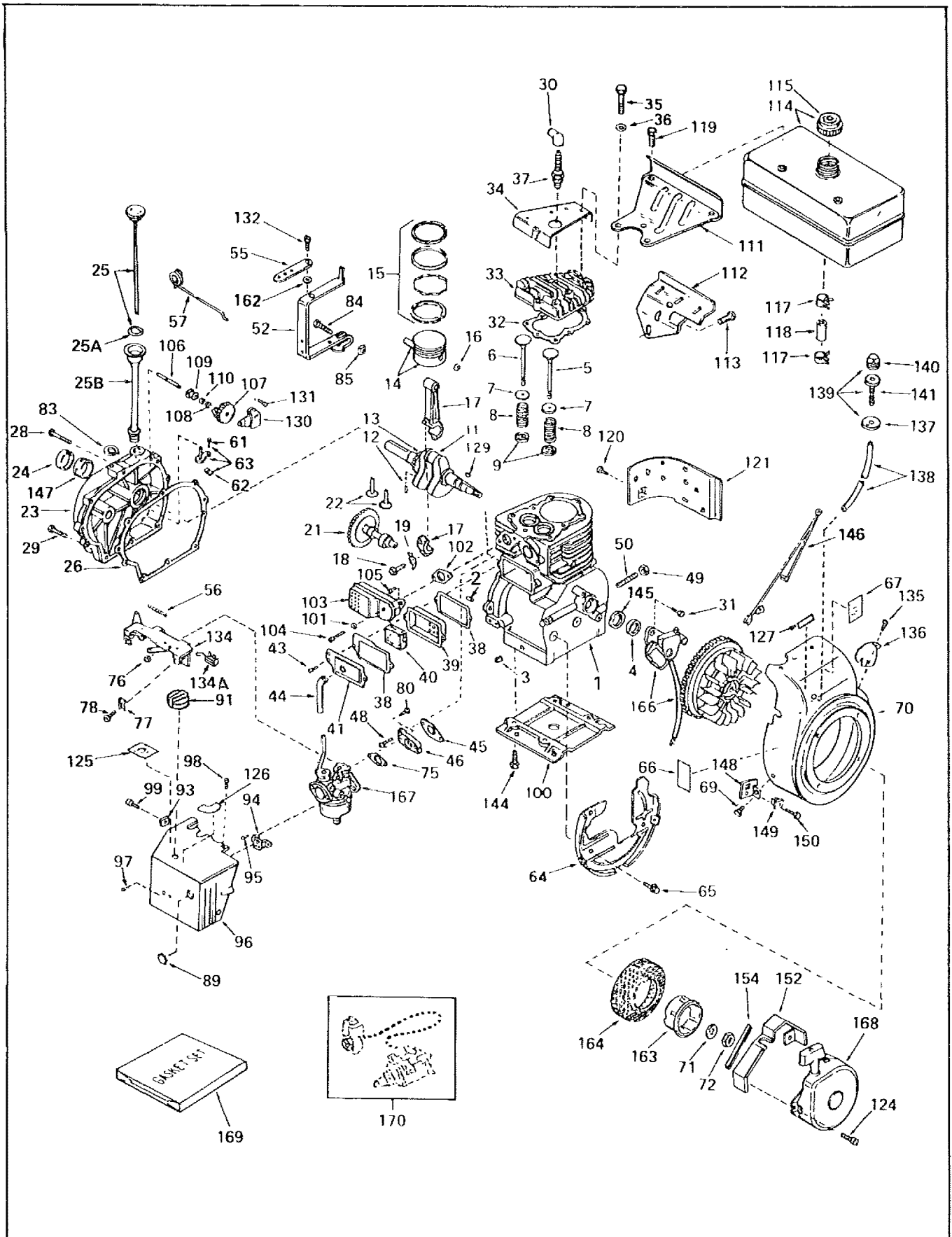
| Key No. | Part No. | Description                        |
|---------|----------|------------------------------------|
| 1       | 49573    | Screw, Hex Hd, No. 10-24 x 5/8 In. |
| 2       | 67173    | Decal, Caution                     |
| 3       | 49560    | Chute Assembly, Top                |
| 4       | 120834   | *Screw, Hex Hd, 5/16-18 x 3/4 In.  |
| 5       | 9413447  | Locknut, 5/16-18 Thd, Type N       |
| 6       | 49550    | Chute Assembly, Bottom             |
| 7       | 180016   | *Screw, Hex Hd, 1/4-20 x 1/2 In.   |
| 8       | 47240    | Chute Clip                         |
| 9       | 9424215  | Locknut, Hex, 1/4-20 Thd, Type N   |
| 10      | 49555    | Chute Rod                          |
| 11      | 997316   | Locknut, No. 10-24 Thd             |
| 12      | 49552    | Spring                             |
| 13      | 9413534  | Locknut, 3/8-16 Thd                |
| 14      | 274517   | *Flatwasher, 3/8 ID                |
| 15      | 27318    | Gage Wheel Assembly                |
| 16      | 39119    | Shoulder Bolt                      |
| 17      | 271184   | *Nut, Keps, 5/16-18                |
| 18      | 446363   | *Flatwasher, 5/16 ID               |
| 19      | 25091    | Skid                               |
| 20      | 126358   | Carriage Bolt, 5/16-18 x 1 In.     |
| 21      | 67680    | Decal, Caution                     |

| Key No. | Part No. | Description                       |
|---------|----------|-----------------------------------|
| 22      | 68183    | Decal, Caution                    |
| 23      | 47238    | Cover Assembly, Impeller          |
| 24      | 67167    | Decal, Name                       |
| 25      | 36602    | Carriage Bolt, 1/4-20 x 5/8 In.   |
| 26      | 180077   | *Screw, Hex Hd, 5/16-18 x 3/4 In. |
| 27      | 48209    | Bearing, Retainer                 |
| 28      | 48210    | Bearing, Self-Aligning            |
| 29      | 48216    | Auger Housing End, R.H.           |
| 30      | 48459    | Auger Cover & Scraper Assembly    |
| 31      | 48217    | Auger Housing End, L.H.           |
| 32      | 48606    | Impeller Shaft, Assembly          |
| 33      | 47256    | Impeller Assembly                 |
| 34      | 454565   | Roll Pin, 1/4 x 1 1/4 In.         |
| 35      | 13322    | Shear Bolt                        |
| 36      | 48768    | Auger Assembly, R.H.              |
| 37      | 21970    | *Washer, 1 ID x 3/4 OD x .125 Thk |
| 38      | 48767    | Auger Assembly, L.H.              |
| 39      | 48264    | Gear Case Assembly                |
| 40      | 48352    | Shaft, Gear Box, Long             |
| 41      | 3021     | *Key, Woodruff, No. 9             |
| 42      | 24274    | Oil Seal                          |

| Key No. | Part No. | Description                                |
|---------|----------|--|
| 43      | 48274    | Bearing                                    |
| 44      | 48275    | Washer, Thrust                             |
| 45      | 32397    | Bearing, Needle                            |
| 46      | 47787    | Worm Gear                                  |
| 47      | 21682    | Spring Washer                              |
| 48      | 21681    | Ring, Retaining                            |
| 49      | 48273    | Bearing, Input, Front                      |
| 50      | 23700    | Pipe Plug                                  |
| 51      | 48265    | Gear Case Assy, L.H. (Incl. Items 59 & 60) |
| 52      | 21684    | *Key, Hi-Pro                               |
| 53      | 48271    | Washer, Thrust                             |
| 54      | 47801    | Gear, Bronze                               |
| 55      | 48270    | Gasket, Gear Case                          |
| 56      | 48272    | Shaft, Gear Box, Short                     |
| 57      | 48266    | Gear Case Assy, R.H. (Incl. Items 59 & 60) |
| 58      | 35498    | Screw, Taptite, 5/16-18 x 3/4 In.          |
| 59      | 48269    | Bearing                                    |
| 60      | 21922    | Oil Seal                                   |

\*Standard Hardware Items - May Be Purchased Locally.

CRAFTSMAN 4-CYCLE ENGINE MODEL NUMBER 143.696102



# CRAFTSMAN 4-CYCLE ENGINE MODEL NUMBER 143.696102

| Ref. No. | Part No.        | Part Name  | Ref. No. | Part No. | Part Name  |
|----------|-----------------|--|----------|----------|--|
| 1        | 32586B          | Cylinder Assy. (Incl. Nos. 2, 3 & 4)   | 55       | 30205    | Bracket, Governor adjusting                        |
| 2        | 27652           | Pin, Dowel   | 56       | 30826    | Spring, Extension                                  |
| 3        | 27642           | Plug, Sq. hd. pipe (Oil drain)   | 57       | 30824    | Link, Governor-to-throttle                         |
| 4        | 32630           | Seal, Oil  | 61       | 650494   | Screw, Fil. hd. Sems, 6-40 x 5/16                  |
| 5        | 32783           | Valve, Intake (Std.) (Incl. No. 9)   | 62       | 30700    | Yoke, Governor                                     |
| 5        | 32784           | Valve, Intake (1/32" oversize) (Incl. No. 9)                                   | 63       | 30699C   | Rod Assy. Governor (Incl. Nos. 61 & 62)            |
| 6        | 27878A          | Valve, Exhaust (Std.) (Incl. No. 9)  | 64       | 29536    | Baffle, Blower housing                             |
| 6        | 27880A          | Valve, Exhaust (1/32" oversize) (Incl. No. 9)                                  | 65       | 650561   | Screw, Hex washer hd. durlock, 1/4-20 x 5/8        |
| 7        | 27882           | Cap, Upper valve spring  | 66       | 34374    | Decal, Instruction                                 |
| 8        | 27881           | Spring, Valve  | 67       | 34170    | Decal, Instruction                                 |
| 9        | 32581           | Cap, Lower valve spring  | 69       | 29747A   | Screw, Hex hd. Sems, 5/16-24 x 3/4                 |
| 11       | 32680A          | Crankshaft Assy. (Incl. Nos. 12 & 13)  | 70       | 32158B   | Housing, Blower (Incl. Nos. 135 & 136)             |
| 12       | 29783           | Pin, Crankshaft gear   | 71       | 650490   | Washer, Belleville                                 |
| 13       | 27884           | Gear, Crankshaft   | 72       | 8116     | Nut, Crankshaft                                    |
| 14       | 33592B          | Piston & Pin Assy. (Incl. No. 16) (Std.)                                       | 75       | *31688   | Gasket, Carburetor                                 |
| 14       | 33593B          | Piston & Pin Assy. (Incl. No. 16) (.010 oversize)                              | 76       | 29752    | Nut & Lockwasher Assy., 1/4-28                     |
| 14       | 33594B          | Piston & Pin Assy. (Incl. No. 16) (.020 oversize)                              | 77       | 27793    | Clip, Conduit                                      |
| 14       | 34517           | Piston, Pin & Ring Assy. (Incl. Nos. 15 & 16) (Std.)                           | 78       | 28942    | Screw, Hex washer hd. Sems, 10-32 x 3/8            |
| 14       | 34518           | Piston, Pin & Ring Assy. (Incl. Nos. 15 & 16) (.010 oversize)                  | 80       | 650572   | Screw, Flat hd. Sems, 1/4-28 x 1-1/8               |
| 14       | 34519           | Piston, Pin & Ring Assy. (Incl. Nos. 15 & 16) (.020 oversize)                  | 83       | 29642    | Ring, Retaining                                    |
| 15       | 32595           | Ring Set, Piston (Std.)  | 84       | 29826    | Screw, Hex washer hd., 10-32 x 3/4                 |
| 15       | 32596           | Ring Set, Piston (.010 oversize)   | 85       | 29216    | Locknut, Hex, 10-32                                |
| 15       | 32597           | Ring Set, Piston (.020 oversize)   | 89       | 31291    | Plug, Cover  |
| 16       | 27888           | Ring, Piston pin retaining   | 91       | 34585    | Knob, Control                                      |
| 17       | 32591C          | Rod Assy., Connecting (Incl. Nos. 18 & 19)                                     | 93       | 650764   | Nut, "U" Type                                      |
| 18       | 650662A         | Screw, Connecting rod  | 94       | 32398    | Bracket, Carburetor cover                          |
| 19       | 34242           | Dipper, Oil  | 95       | 28820    | Screw, Fil. hd. Sems, 10-32 x 1/2                  |
| 21       | 32115           | Camshaft (Mech. Compression Release)   | 96       | 34581    | Cover, Carburetor                                  |
| 22       | 34034           | Lifter, Valve  | 97       | 650257   | Screw, Pan hd. Sems, 8-32 x 5/16                   |
| 23       | 31303B          | Cover, Cylinder (Incl. Nos. 24, 106 & 147)                                     | 98       | 650765   | Screw, Hex washer hd. self-drilling, 10-32 x 1/2   |
| 24       | 28427           | Seal, Oil  | 99       | 650760   | Screw, Pan hd. taptite, 8-32 x 7/16                |
| 25       | 34011A          | Dipstick, Oil (Incl. No. 25A)  | 100      | 29538    | Base, Engine mounting                              |
| 25A      | 33590           | "O" Ring   | 101      | 26073    | Washer, Flat                                       |
| 25B      | 33893A          | Tube, Oil filler   | 102      | *27930   | Gasket, Muffler                                    |
| 26       | *30684          | Gasket, Cylinder cover   | 103      | 32401    | Muffler  |
| 28       | 650488          | Screw, Hex hd. Sems, 1/4-20 x 1-1/4  | 104      | 650694A  | Screw, Hex flange hd., 5/16-18 x 2                 |
| 29       | 650493          | Screw, Hex hd. Sems, 1/4-20 x 1-3/4  | 105      | 30196    | Screw, Fil. hd., 5/16-18 x 3/4                     |
| 30       | 610118          | Cover, Spark plug  | 106      | 31845    | Shaft, Mechanical governor                         |
| 31       | 650489          | Screw, Hex hd. Sems, 1/4-20 x 5/8  | 107      | 30591    | Gear Assy., Governor (Incl. No. 110)               |
| 32       | *32631          | Gasket, Cylinder head  | 108      | 29193    | Ring, Retaining                                    |
| 33       | 30938A          | Head, Cylinder   | 109      | 30588A   | Spool, Governor                                    |
| 34       | 30939A          | Cover, Cylinder head   | 110      | 30590A   | Washer, Flat                                       |
| 35       | 650697A         | Screw, Hex flange hd., 5/16-18 x 2-1/2   | 111      | 34159    | Plate, Fuel tank mounting                          |
| 36       | 650691          | Washer, Flat   | 112      | 34158    | Bracket, Fuel tank mounting                        |
| 37       | 33636           | Plug, Spark (Champion J-8 or equivalent) <u>Except for Canada</u>              | 113      | 650561   | Screw, Hex washer hd. durlock, 1/4-20 x 5/8        |
| 37       | 34251<br>Canada | Resistor Spark Plug (Canadian Regulations require RJ-17LM resistor spark plug) | 114      | 34186    | Tank Assy., Fuel (Incl. No. 115)                   |
| 38       | *27896          | Gasket, Valve spring cover   | 115      | 30998B   | Cap, Fuel  |
| 39       | 28423           | Body Assy., Breather   | 117      | 26460    | Clamp, Fuel line                                   |
| 40       | 28424           | Element, Breather  | 118      | 30962    | Line, Fuel   |
| 41       | 28425           | Cover, Valve spring  | 119      | 650665   | Screw, Hex washer hd. Sems, self-tap, 1/4-14 x 7/8 |
| 43       | 650128          | Screw, Fil. hd. Sems, 10-24 x 1/2  | 120      | 650128   | Screw, Fil. hd. Sems, 10-24 x 1/2                  |
| 44       | 27627           | Tube, Breather   | 121      | 30622    | Extension, Blower housing                          |
| 45       | *27915          | Gasket, Intake   | 124      | 29716    | Screw, Pan hd. Sems, 1/4-28 x 7/16                 |
| 46       | 30195A          | Flange, Carburetor (Incl. Nos. 77 & 80)  | 125      | 34129    | Decal, Warning                                     |
| 48       | 30196           | Screw, Fil. hd. Sems, 5/16-18 x 3/4  | 126      | 34133    | Decal, Choke                                       |
| 49       | 30969           | Cap, Oil drain   | 127      | 34144    | Decal, "Primer"                                    |
| 50       | 32678           | Nipple, Pipe   | 129      | 32589    | Key, Flywheel                                      |
| 52       | 32326A          | Lever, Governor  | 130      | 31843A   | Bracket, Governor gear                             |
|          |                 |  | 131      | 28763    | Screw, Hex washer hd., shakeproof, 10-32 x 19/32   |
|          |                 |  | 132      | 650548   | Screw, Hex washer hd., 8-32 x 5/16                 |

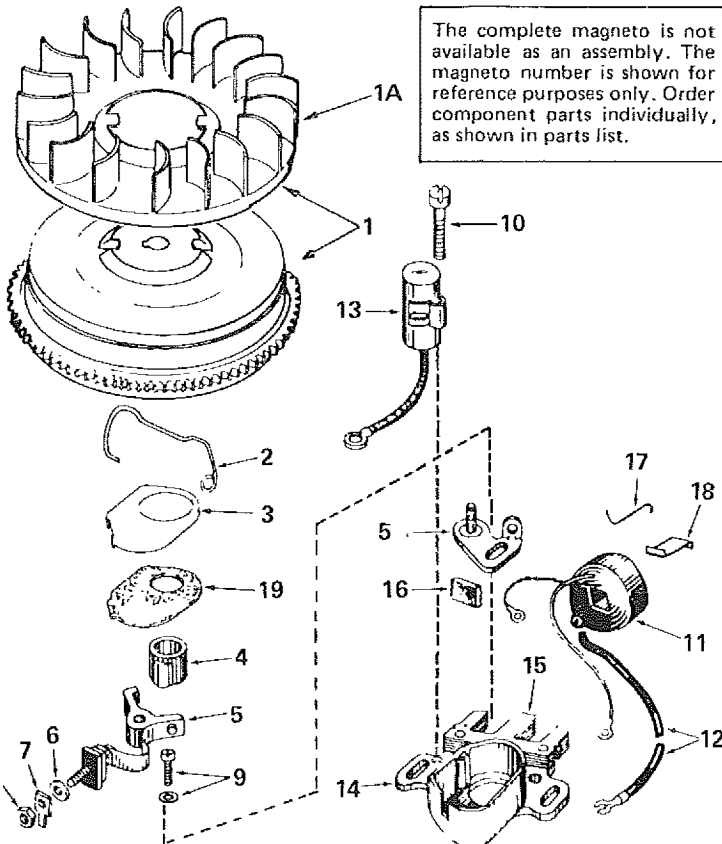
\*Indicates Parts Included in Gasket Set, Ref. No. 169.

# CRAFTSMAN 4-CYCLE ENGINE MODEL NUMBER 143.696102

| Ref. No. | Part No. | Part Name  | Ref. No. | Part No. | Part Name  |
|----------|----------|--|----------|----------|--|
| 134      | 33108A   | Control Assy., Remote speed (Incl. Nos. 56 & 134A) | 154      | 32576    | Seal, Snow guard   |
| 134A     | 610973   | Terminal Assy.                                     | 162      | 29918    | Lockwasher, No. 8 E.T.   |
| 135      | 650736   | Screw, Pan hd., 10-16 x 3/8                        | 163      | 32125    | Cup, Starter   |
| 136      | 33013    | Cover, Starter bubble                              | 164      | 590417   | Screen, Starter cup  |
| 137      | 32312    | Retainer, Primer bulb                              | 166      | 610694A  | Magneto (The complete magneto is not available as an assembly. The magneto number is shown for reference purposes only. Order component parts individually, as shown in parts list.) |
| 138      | 32180A   | Line, Primer                                       |          |          |  |
| 139      | 32182    | Primer Asy. (Incl. Nos. 137, 140 & 141)            |          |          |  |
| 140      | 32183    | Bulb, Primer                                       |          |          |  |
| 141      | 32184    | Body, Primer                                       |          |          |  |
| 144      | 650542   | Screw, Hex hd., 5/16-18 x 3/4                      | 167      | 631920   | Carburetor (Incl. No. 75)  |
| 145      | 33876    | Gasket, Stator                                     | 168      | 590473   | Starter Assy., Rewind  |
| 146      | 34240    | Wire, Ground                                       | 169      | 33239    | Gasket Set (Incl. items marked *)  |
| 147      | 31546    | Bushing, Crankshaft                                | 170      |          | Electric Starter Kit No. 143.88902 (Optional)  |
| 148      | 34126    | Bracket, Grommet mounting                          |          |          |  |
| 149      | 28545    | Grommet, Plastic                                   |          |          |  |
| 150      | 650643   | Screw, Pan hd. self-tap, 8-18 x 3/8                |          |          |  |
| 152      | 34127    | Guard, Starter                                     |          |          |  |

\*Indicates Parts Included in Gasket Set, Ref. No. 169.

## MAGNETO NUMBER 610694A

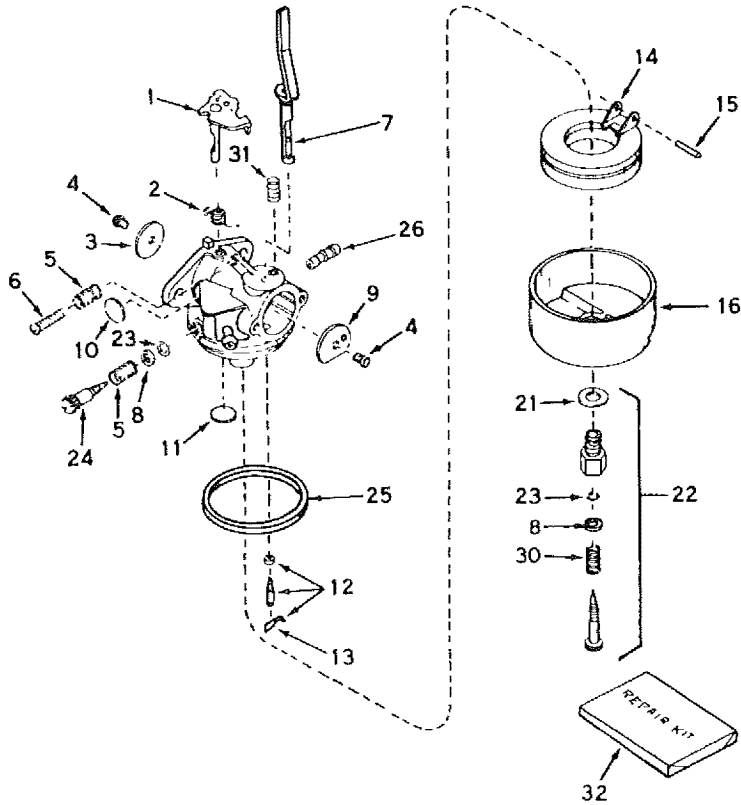


The complete magneto is not available as an assembly. The magneto number is shown for reference purposes only. Order component parts individually, as shown in parts list.

| Ref. No. | Part No. | Part Name  |
|----------|----------|--|
|          | 610694A  | Magneto  |
| 1        | 30811A   | Flywheel (Incl. No. 1A)                                |
| 1A       | 610934   | Fan  |
| 2        | 30551    | Spring, Breaker box dust cover                         |
| 3        | 610947   | Cover, Dust  |
| 4        | 30992    | Cam, Breaker   |
| 5        | 30547A   | Contact Assembly, Breaker                              |
| 6        | 610385   | Washer, Terminal                                       |
| 7        | 33356    | Tab, Ground terminal                                   |
| 8        | 610408   | Nut, Terminal  |
| 9        | 29181    | Screw & Washer, Breaker                                |
| 10       | 610593   | Screw, Condenser                                       |
| 11       | 30560A   | Coil Assy. (Incl. No. 12)                              |
| 12       | 30554    | Wire, Lead   |
| 13       | 30548B   | Condenser  |
| 14       | 30545    | Core & Plate   |
| 15       | 30561B   | Stator Assy. (Incl. Nos. 2, 3, 5 thru 14 & 16 thru 19) |
| 16       | 30549    | Felt, Cam wiper  |
| 17       | 31311    | Clip, Coil locking                                     |
| 18       | 29629    | Spring, Coil wedge                                     |
| 19       | 610955   | Gasket, Dust cover                                     |
| 19       | 610956   | Gasket, Dust cover                                     |

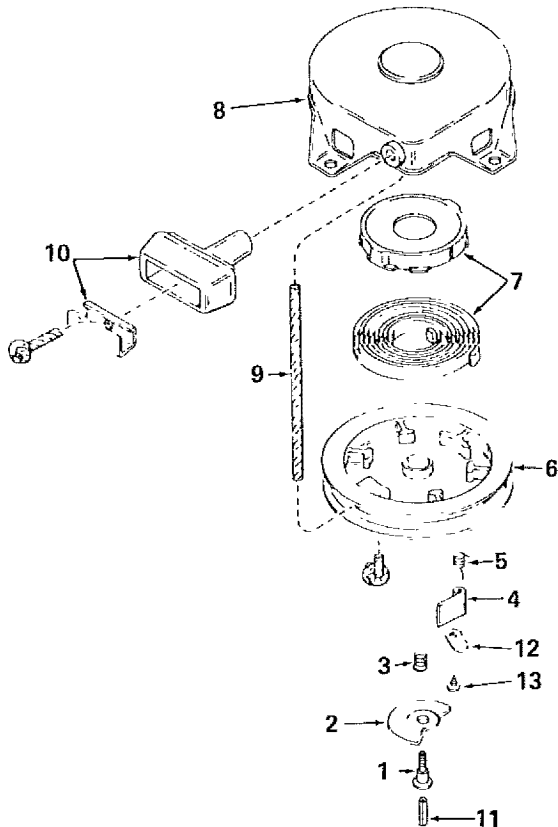


CARBURETOR NUMBER 631920



| Ref. No. | Part No. | Part Name  |
|----------|----------|--|
|          | 631920   | Carburetor   |
| 1        | 31834    | Shaft & Lever Assy., Throttle                            |
| 2        | 632016   | Spring, Throttle return                                  |
| 3        | 631036   | Shutter, Throttle  |
| 4        | 650506   | Screw, 4-40 x 3/16                                       |
| 5        | 630766   | Spring, Idle regulating screw                            |
| 6        | 650417   | Screw, Idle regulating                                   |
| 7        | 631913   | Shaft & Lever Assy., Choke                               |
| 8        | 630739   | Washer, Flat   |
| 9        | 631815   | Shutter, Choke   |
| 10       | *630748  | Plug, Welch  |
| 11       | *631027  | Plug, Welch  |
| 12       | *631021  | Inlet Needle, Seat & Clip Assy. (Incl. No. 13)           |
| 13       | 631022   | Clip, Inlet needle                                       |
| 14       | 632019   | Float, Carburetor  |
| 15       | *631024  | Shaft, Float   |
| 16       | 631867   | Bowl, Float  |
| 21       | 27110    | Gasket, Bowl-to-body                                     |
| 22       | *31839   | Adjustment Screw Assy., Main (Incl. Nos. 8, 21, 23 & 30) |
| 23       | *630740  | "O" Ring, Adjustment screw                               |
| 24       | *631078  | Screw, Idle adjustment                                   |
| 25       | *631028  | Gasket, Bowl-to-body                                     |
| 26       | 631803   | Fitting, Fuel inlet                                      |
| 30       | 630738   | Spring, Main Adjustment screw                            |
| 31       | 630735   | Spring, Choke stop                                       |
| 32       | 31840    | Repair Kit (Incl. items marked *)                        |

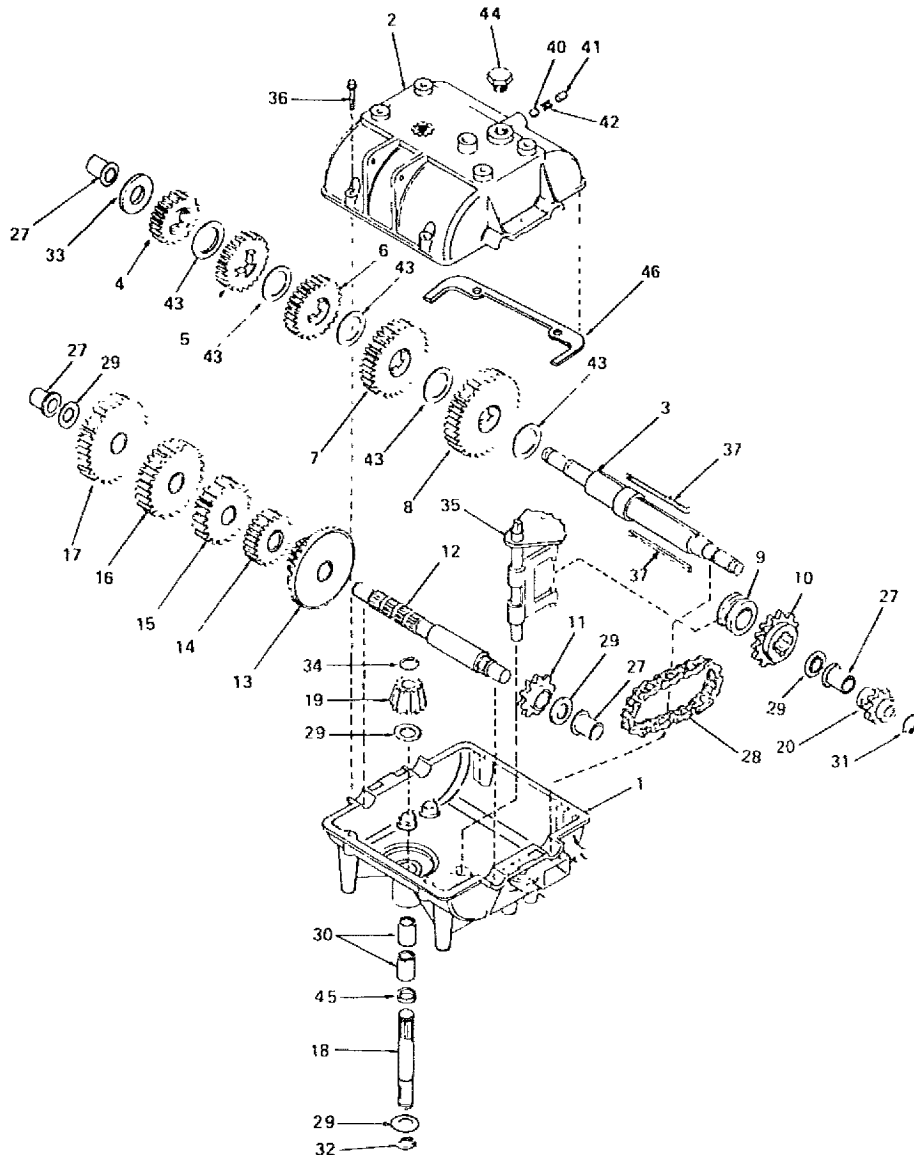
REWIND STARTER NUMBER 590473



| Ref. No. | Part No. | Part Name                            |
|----------|----------|--------------------------------------|
|          | 590473   | Starter, Rewind                      |
| 1        | 590409A  | Screw, Retainer                      |
| 2        | 590474   | Cam, Dog                             |
| 3        | 590411   | Spring, Brake                        |
| 4        | 590148   | Dog, Starter                         |
| 5        | 590475   | Spring, Dog                          |
| 6        | 590478   | Pulley                               |
| 7        | 590414   | Spring & Keeper Assy.                |
| 8        | 590415   | Housing Assy., Starter (Incl. No. 1) |
| 9        | 590451A  | Rope, Starter                        |
| 10       | 590387   | Handle Assy., Starter                |
| 11       | 590459   | Pin, Centering                       |
| 12       | 590476   | Retainer, Dog                        |
| 13       | 590477   | Screw, No. 6 x 5/16                  |

# TRANSMISSION REPAIR PARTS

## 5 SPEED TRANSMISSION MODEL NUMBER 143.735



| Ref. No. | Part No. | Part Name                                   | Ref. No. | Part No. | Part Name                               |
|----------|----------|---|----------|----------|---|
| 1        | 794254   | Complete Transmission                       | 19       | 778113   | Bevel pinion, Input                     |
| 2        | 770061   | Case, Transmission                          | 20       | 786049   | Sprocket (8 teeth)                      |
| 3        | 772070   | Cover, Transmission                         | 27       | 780105   | Bushing, Flanged                        |
| 4        | 776161   | Shaft, Output                               | 28       | 786062   | Chain, Roller (No. 41 chain, 22 links)  |
| 5        | 778121A  | Gear, Spur (20 teeth)                       | 29       | 780072   | Race, Thrust                            |
| 6        | 778122   | Gear, Spur (22 teeth)                       | 30       | 780086   | Bearing, Needle                         |
| 7        | 778123   | Gear, Spur (25 teeth)                       | 31       | 792072   | Ring, Retaining                         |
| 8        | 778124   | Gear, Spur (30 teeth)                       | 32       | 792035   | Ring, Retaining                         |
| 9        | 778125   | Gear, Spur (35 teeth)                       | 33       | 780109   | Washer                                  |
| 10       | 784266   | Collar, Shift                               | 34       | 788040   | Ring, Retaining                         |
| 11       | 786060   | Sprocket (14 teeth)                         | 35       | 784267   | Rod & Fork Assy., Shift                 |
| 12       | 786061   | Sprocket (10 teeth)                         | 36       | 792073   | Screw, Hex hd. tap-tite, 1/4-20 x 1-1/4 |
| 13       | 776134   | Shaft, Counter                              | 37       | 792089A  | Key                                     |
| 14       | 778109   | Gear, Bevel (42 teeth & 15 tooth spur gear) | 40       | 792077   | Ball, Steel, 5/16                       |
| 15       | 778126   | Gear, Spur (20 teeth)                       | 41       | 792078   | Screw, Set, 3/8-16 x 3/8                |
| 16       | 778127   | Gear, Spur (25 teeth)                       | 42       | 792079   | Spring                                  |
| 17       | 778128   | Gear, Spur (28 teeth)                       | 43       | 780108   | Washer, Thrust                          |
| 18       | 778129   | Gear, Spur (30 teeth)                       | 44       | 792074   | Plug                                    |
| 19       | 776143   | Shaft, Input                                | 45       | 792001   | Ring, Square cut                        |
|          |          |   | 46       | 788054   | Gasket                                  |

## SERVICE HELPS

**DANGER: ALWAYS DISCONNECT SPARK PLUG BEFORE ATTEMPTING ANY REMEDY!**

| TROUBLE   | LOOK FOR  | REMEDY  |
|---|---|---|
| Difficult starting,<br>Engine runs erratic              | Defective spark plug  | Replace defective plug.   |
|   | Blocked fuel line or empty gas tank                                   | Clean fuel line; check fuel supply.   |
|   | Review paragraph <b>To Start Engine</b> .                             |   |
| Engine stalls;<br>Loss of power;<br>Engine runs erratic | Unit running on CHOKE   | Set choke lever to RUN position.  |
|   | Obstruction in impeller housing                                       | Remove obstruction; clean impeller housing. Refer to <b>Danger</b> after <b>Step 6</b> of <b>Snow Thrower Operation</b> paragraph in <b>Operation</b> section of this manual.   |
|   | Water in fuel system  | Remove carburetor bowl to drain fuel tank. Refill with fresh fuel   |
|   | <b>CAUTION: Do not remove carburetor bowl when the engine is hot.</b> |   |
| Excessive vibration                                     | Loose parts;<br>Damaged impeller                                      | Stop engine immediately; tighten all bolts and make all necessary repairs. If vibration continues, have the unit serviced by a competent repairman.   |
| Unit fails to propel itself                             | Drive belt loose or defective   | Replace drive belt. Refer to <b>Drive Belt Replacement</b> paragraph in <b>Maintenance</b> section of this manual.  |
|   | Broken shear bolt   | Replace shear bolt. Refer to <b>Shear Bolt Replacement</b> paragraph in <b>Maintenance</b> section of this manual.  |
|   | Drive roller chain defective  | Replace roller chain. Refer to <b>Roller Chain Replacement</b> paragraph in <b>Maintenance</b> section of this manual.  |
|   | Unit drive belt loose or defective                                    | Adjust unit drive belt; replace if defective. Refer to <b>Drive Belt Adjustment</b> paragraph in <b>Adjustment</b> section or <b>Drive Belt Replacement</b> paragraph in <b>Maintenance</b> section of this manual.           |
| Unit fails to discharge snow                            | Impeller drive belt loose or defective                                | Adjust impeller/auger drive belt; replace if defective. Refer to <b>Drive Belt Adjustment</b> paragraph in <b>Adjustment</b> section or <b>Drive Belt Replacement</b> paragraph in <b>Maintenance</b> section of this manual. |
|   | Impeller/Auger control out of adjustment                              | Adjust impeller/auger control cable. Refer to <b>Impeller/Auger Control Cable Adjustment</b> paragraph in <b>Adjustment</b> section of this manual.   |
|   | Shear bolt broken   | Replace shear bolt. Refer to <b>Shear Bolt Replacement</b> paragraph in <b>Maintenance</b> section of this manual.  |
|   | Discharge chute clogged   | Clean discharge chute and inside of auger housing. Refer to <b>Danger</b> after <b>Step 6</b> of <b>Snow Thrower Operation</b> paragraph in <b>Operation</b> section of this manual.  |
|   | Foreign object lodged in auger  | Remove object from auger. Refer to <b>Danger</b> after <b>Step 6</b> of <b>Snow Thrower Operation</b> paragraph in <b>Operation</b> section of this manual.   |
|   | Auger gear case trouble   | Check auger gear case for broken or bound parts and for oil level. See <b>Unit Repair Parts</b> section of this manual for correct order of parts.  |
|   | Transmission trouble  | Have transmission checked by competent repairman.   |

**Sears**

**owner's  
manual**

**MODEL NO.  
536.918300**

**SEARS  
SERVICE  
is at  
YOUR  
SERVICE**

## HOW TO ORDER REPAIR PARTS

The Model Number will be found on a plate attached to the main frame. Always mention the Model Number when requesting service or repair parts for your CRAFTSMAN SNOW THROWER.

All parts listed herein may be ordered through SEARS, ROEBUCK AND CO. or SIMPSON-SEARS LIMITED Retail or Catalog Stores. If the parts you need are not stocked locally, your order will be electronically transmitted to a SEARS Repair Parts Distribution Center for expedited handling.

WHEN ORDERING REPAIR PARTS, ALWAYS GIVE THE FOLLOWING INFORMATION AS SHOWN IN THIS LIST:

1. The PART NUMBER
2. The PART DESCRIPTION
3. The MODEL NUMBER - 536.918300
4. The NAME OF ITEM - Snow Thrower
5. The ENGINE MODEL NUMBER - 143.696102

"Your Sears merchandise has added value when you consider that Sears has service units nationwide staffed with Sears trained technicians . . . professional technicians specifically trained on Sears products, having the parts, tools and equipment to insure that we meet our pledge to you . . . we service what we sell."

SEARS, ROEBUCK AND CO., Chicago, Illinois 60684 U.S.A.