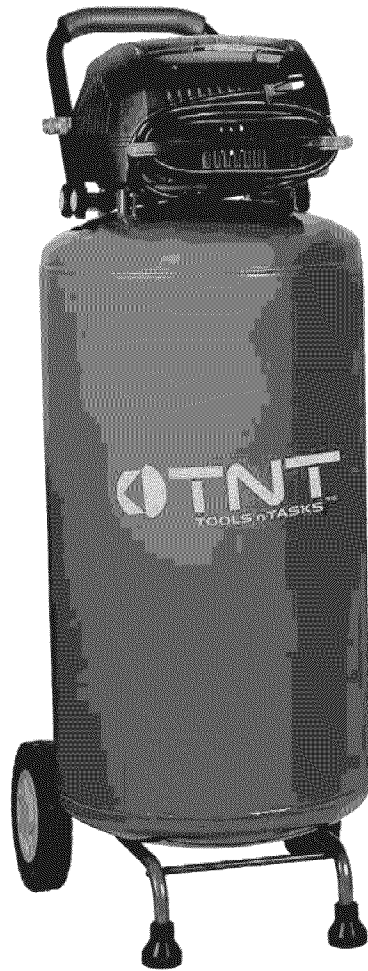




26-GALLON OIL-FREE AIR COMPRESSOR

Model: 15560



TOLL FREE HELPLINE: 1-888-266-7096
FOR SAFE OPERATION, READ AND UNDERSTAND
ALL CONTENTS OF THE INSTRUCTION MANUAL

SAVE THIS MANUAL

Keep this manual for the safety warnings and precautions, assembly, operating, inspection, maintenance and cleaning procedures. Write the product's serial number in the back of the manual near the assembly diagram (or month and year of purchase if product has no number). Keep this manual and the receipt in a safe and dry place for future reference.

IMPORTANT SAFETY INFORMATION

In this manual, on the labeling, and all other information provided with this product:



This is the safety alert symbol. It is used to alert you to potential personal injury hazards. Obey all safety messages that follow this symbol to avoid possible injury or death.

DANGER

DANGER indicates a hazardous situation which, if not avoided, will result in death or serious injury.

WARNING

WARNING indicates a hazardous situation which, if not avoided, could result in death or serious injury.

CAUTION

CAUTION, used with the safety alert symbol, indicates a hazardous situation which, if not avoided, could result in minor or moderate injury.

NOTICE

NOTICE is used to address practices not related to personal injury.

CAUTION

CAUTION, without the safety alert symbol, is used to address practices not related to personal injury.

GENERAL SAFETY RULES



WARNING! Read all instructions

Failure to follow all instructions listed below may result in electric shock, fire, and/or serious injury. The term “power tool” in all of the warnings listed below refers to your mains-operated (corded) power tool.

1. **Work area safety**

- a. Keep work area clean and well lit. Cluttered or dark areas invite accidents.
- b. Do not operate power tools in explosive atmospheres, such as in the presence of flammable liquids, gases or dust. Power tools create sparks which may ignite the dust or fumes.
- c. **Keep children and bystanders away while operating a power tool.** Distractions can cause you to lose control.

⚠CAUTION To reduce the risk of electric shock or injury, use indoors only.

2. **Electrical safety**

- a. Power tool plugs must match the outlet. Never modify the plug in any way. Do not use any adapter plugs with earthed (grounded) power tools. Unmodified plugs and matching outlets will reduce risk of electric shock.
- b. Avoid body contact with earthed or grounded surfaces such as pipes, radiators, ranges and refrigerators. There is an increased risk of electric shock if your body is earthed or grounded.
- c. **Do not expose power tools to rain or wet conditions.** Water entering a power tool will increase the risk of electric shock.
- d. **Do not abuse the cord. Never use the cord for carrying, pulling or unplugging the power tool. Keep cord away from heat, oil, sharp edges or moving parts.** Damaged or entangled cords increase the risk of electric shock.

3. **Personal safety**

- a. Stay alert, watch what you are doing and use common sense when operating a power tool. Do not use a power tool while you are tired or under the influence of drugs, alcohol or medication. A moment of inattention while operating power tools may result in serious personal injury.
- b. **Use safety equipment. Always wear eye protection.** Safety equipment such as dust mask, non-skid safety shoes, hard hat, or hearing protection used for appropriate conditions will reduce personal injuries.
- c. Avoid accidental starting. Ensure the switch is in the off-position before plugging in. Carrying power tools with your finger on the switch or plugging in power tools that have the switch on invites accidents.



- d. Remove any adjusting key or wrench before turning the power tool on. A wrench or a key left attached to a rotating part of the power tool may result in personal injury.
- e. Do not overreach. Keep proper footing and balance at all times. This enables better control of the power tool in unexpected situations.
- f. Dress properly. Do not wear loose clothing or jewellery. Keep your hair, clothing and gloves away from moving parts. Loose clothes, jewellery or long hair can be caught in moving parts.

4. **Power tool use and care**

- a. Do not force the power tool. Use the correct power tool for your application. The correct power tool will do the job better and safer at the rate for which it was designed.
- b. Do not use the power tool if the switch does not turn it on and off. Any power tool that cannot be controlled with the switch is dangerous and must be repaired.
- c. **Disconnect the plug from the power source before making any adjustments, changing accessories, or storing power tools.** Such preventive safety measures reduce the risk of starting the power tool accidentally.
- d. **Store idle power tools out of the reach of children and do not allow people unfamiliar with the power tool or these instructions to operate the power tool.** Power tools are dangerous in the hands of untrained users.
- e. Maintain power tools. Check for misalignment or binding of moving parts, breakage of parts and any other condition that may affect the power tools operation. If damaged, have the power tool repaired before use. Many accidents are caused by poorly maintained power tools.
- f. Use the power tool in accordance with these instructions and in the manner intended for the particular type of power tool, taking into account the working conditions and the work to be performed. Use of the power tool for operations different from those intended could result in a hazardous situation.

5. **Service**

- a. Have your power tool serviced by a qualified repair person using only identical replacement parts. This will ensure that the safety of the power tool is maintained.

SPECIFIC SAFETY RULES

- 1. Maintain labels and nameplates on the Air Compressor. These carry important safety information. If unreadable or missing, contact TOLL FREE HELPLINE 1-888-266-7096.

2. **CAUTION:** Your Warranty is voided if you drop the Air Compressor. Always transport the Air Compressor using its Handle and Wheels.
3. **DANGER!** This Air Compressor is NOT equipped and should not be used “as-is” to supply breathing air. For any application of air for human consumption, you must fit the Air Compressor with suitable in-line safety and alarm equipment (not included). This additional equipment is necessary to properly filter and purify the air to meet minimal specifications for Grade D breathing as described in Compressed Gas Association Commodity Specification G 7.1-1966, OSHA 29 CFR 1910. 134, and/or Canadian Standards Associations (CSA). In the event the Air Compressor is used for the purpose of breathing air application and proper in-line safety and alarm equipment is not simultaneously used, existing warranties are void, and supplier and manufacturer disclaims any liability whatsoever for any loss, personal injury, or damage.
4. **DANGER!** Never attempt to repair or modify the Air Tank (27). Welding, drilling, or any other modification will weaken the Tank resulting in damage from rupture or explosion. Always replace worn, cracked, or damaged Tanks.
5. **WARNING!** Never use plastic (PVC) pipe for compressed air; serious injury or death could result. Any tube, pipe, or hose used must have a pressure rating higher than 155 PSI. Minimum recommended pipe size: Up to 50 feet long use 1/2” diameter. Greater than 50 feet use 3/4” diameter. Larger diameter pipe is always better.
6. **CAUTION:** DO NOT use an extension cord with this product.
7. Make sure all tools and equipment used with the Air Compressor are rated to the appropriate capacity. Do not use any tool or equipment that operates over 155 PSI.
8. Drain the Air Compressor every day. Do not allow excessive moisture to build up inside the Air Compressor’s Tank. Do not open the Drain Valve (30) with more than 10 PSI of air pressure in the Tank. Do not unscrew the Drain Valve so that *more than* four turns are showing.
9. Avoid injury. Never direct the Air Outlet Valve (8) at people or animals.
10. Do not alter or remove the Safety Release Valve (18).
11. Make sure the Air Compressor is located on a flat, level, sturdy surface capable of supporting the weight of the Compressor, operator(s), and any additional tools and equipment.
12. Do not move or transport the Compressor if the Air Tank (27) is under pressure.
13. Industrial applications must follow OSHA guidelines.

14. Never stand on the Air Compressor. Serious injury could result if the Compressor is tipped.
15. Never leave the Air Compressor unattended when it is plugged in and running. Turn off the Compressor, and unplug the unit before leaving.
16. Do not allow children and other unauthorized people to handle or play with the Air Compressor.
17. Do not modify the factory set pressure shutoff or startup switches. This tool will do the work better and safer at the speed and capacity for which it was designed.
18. Avoid body contact with oils and lubricants used in the Compressor. If swallowed, seek medical treatment immediately. For skin contact, immediately wash with soap and water. For eye contact, immediately flush eyes with clean water.
19. **WARNING:** The brass components of this product contain lead, a chemical known to the State of California to cause birth defects (or other reproductive harm). (California Health & Safety code § 25249.5, *et seq.*)
20. **WARNING:** The warnings and precautions discussed in this manual cannot cover all possible conditions and situations that may occur. It must be understood by the operator that common sense and caution are factors which cannot be built into this product, but must be supplied by the operator.

GROUNDING INSTRUCTIONS

This product must be grounded. In the event of a malfunction or breakdown, grounding provides a path of least resistance for electric current to reduce the risk of electric shock.

This product is equipped with an electric cord having an equipment-grounding conductor and a grounding plug. The plug must be plugged into a matching outlet that is properly installed and grounded in accordance with all local codes and ordinances.

Do not modify the plug provided. If it will not fit the outlet, have the proper outlet installed by a qualified electrician.

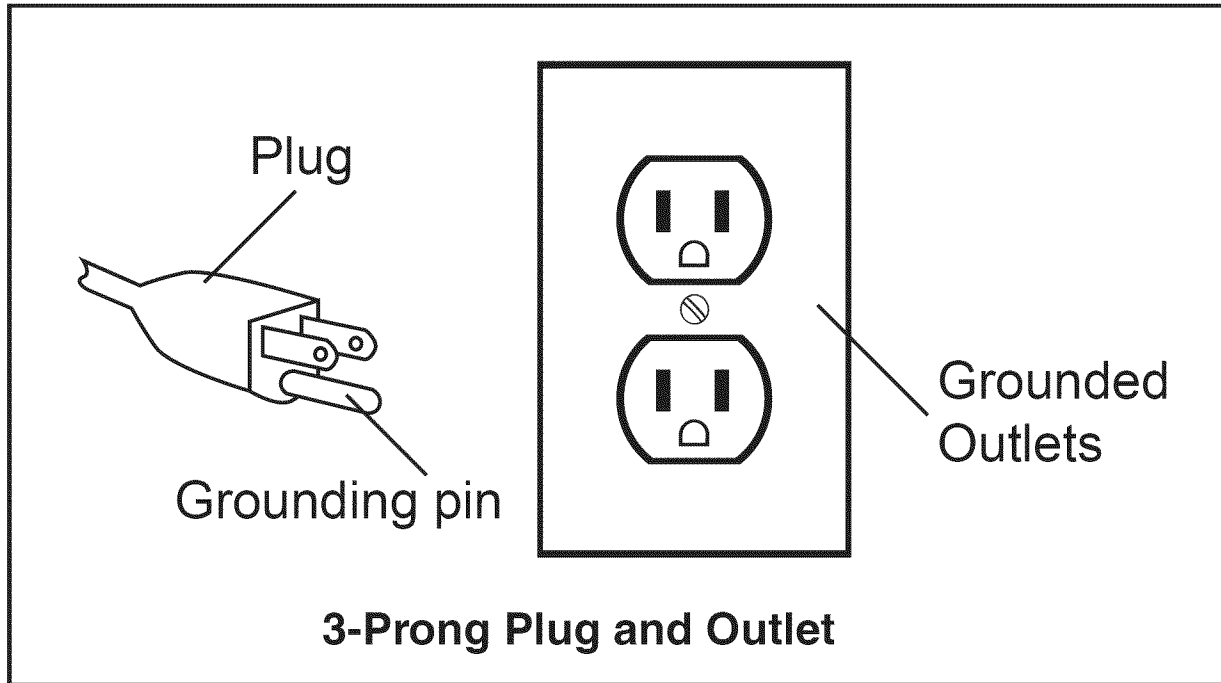
WARNING:

Improper installation of the grounding plug is liable to result in a risk of electric shock. When repair or replacement of the cord is required, do not connect the grounding wire to either flat blade terminal. The wire with insulation having an outer surface that is green with or without yellow stripes is the grounding wire.

GROUNDING INSTRUCTIONS

Check with a qualified electrician or service personnel if the grounding instructions are not completely understood, or if in doubt as to whether the product is properly grounded.

Repair or replace a damaged or worn cord immediately. This product is for use on a nominal 120 V circuit and has a grounding plug similar to the plug illustrated in figure. Only connect the product to an outlet having the same configuration as the plug. Do not use an adapter with this product.



SPECIFICATIONS

Electrical Requirements	120 V~ / 60 Hz / 13A 4.0 HP Motor (Peak) / 1500 Watts (Running) / 13000 Motor RPM Motor Thermal Protection Shut-Off: 275 Degrees Fahrenheit Thermal Protection Reset: Present (18 Amp Circuit Breaker Used) Power Cord: 16 AWG x 3C / 6' Long Power Plug: 3-Prong / Grounded
Compressor Type	Oilless for Maintenance Free Operation
Maximum Air Pressure	155 PSI
Air Delivery	3.4 SCFM @ 90 PSI / 4.0 SCFM @ 40 PSI
Air Tank Capacity	26 Gallons
Female Air Outlet Size	1/4"-18 NPT
Automatic Turn-On/Shut-Off Pressure	125 PSI Automatic Turn-On 155 PSI Automatic Shut-Off (+ or - 5 PSI)
Additional Features	Built-In Tool Storage Compartment
Overall Dimensions	43-7/8" H x 17-3/4" W x 21-1/4" L (Up to Handle)
Net Weight	86 lbs.(39kg)

UNPACKING

When unpacking, check to make sure that the item is intact and undamaged. If any parts are missing or broken, please call TOLL FREE HELPLINE at the number shown on the cover of this manual as soon as possible.

SET UP INSTRUCTIONS



Read the **ENTIRE IMPORTANT SAFETY INFORMATION** section at the beginning of this manual including all text under subheadings therein before set up or use of this product.

⚠️ WARNING

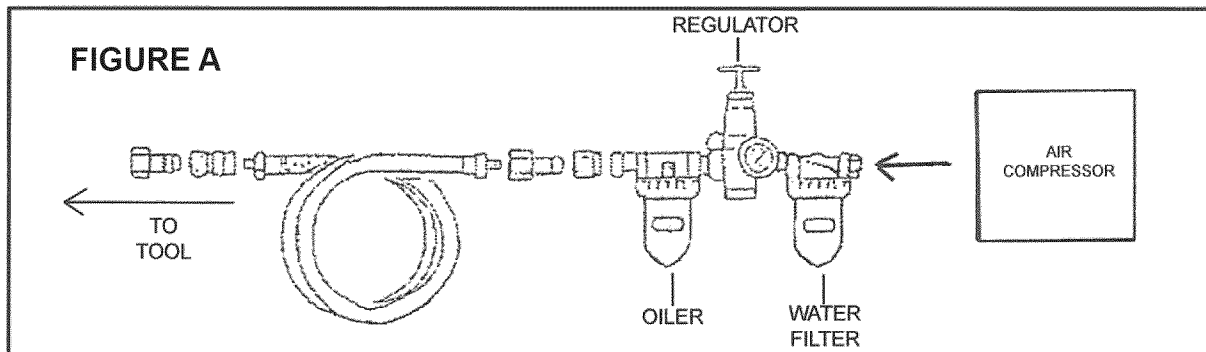
Risk of accidental starting; resulting in serious personal injury. Turn the Power Switch of the tool to its "OFF" position and unplug the tool from its electrical outlet before assembling or making any adjustments to the tool.

Note: For additional information regarding the parts listed in the following pages, refer to the Assembly Diagram near the end of this manual.

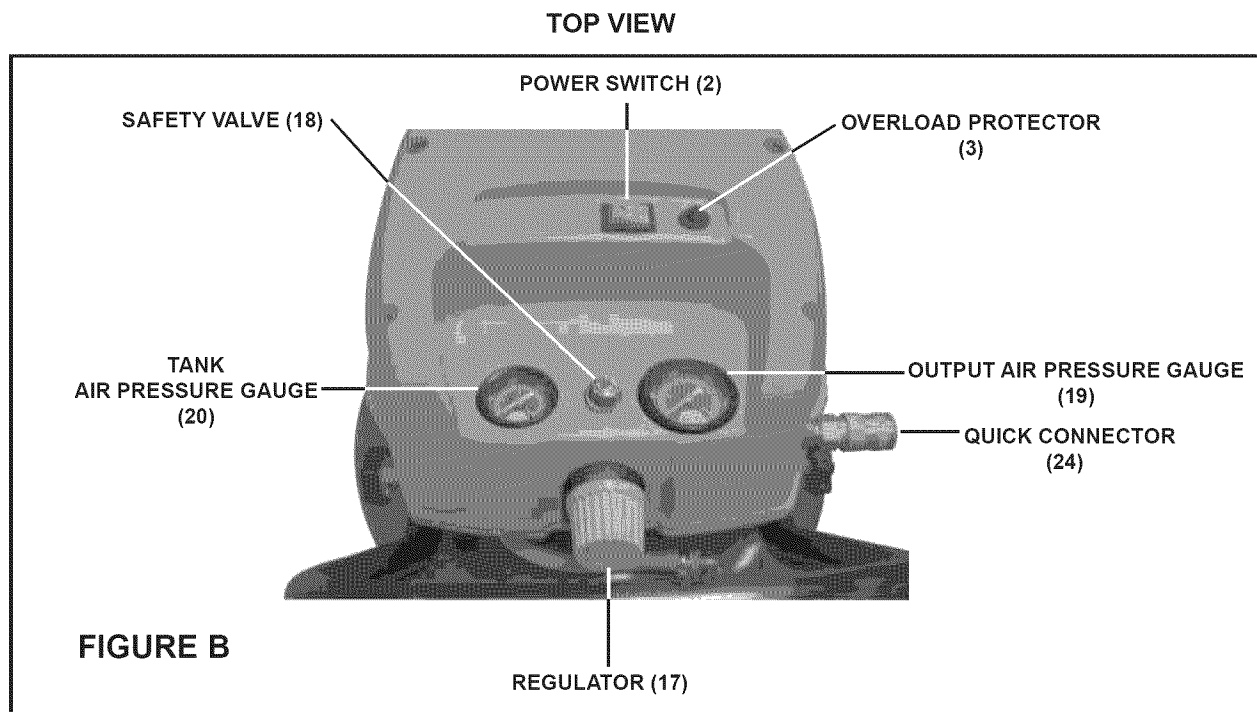
Assembly

1. **CAUTION!** Always make sure the Air Compressor's Power Switch (2) is in its "OFF" position prior to performing any service, maintenance, or cleaning of the Compressor.

2. To extend the life of your tools and equipment, it is recommended that you install an oiler and water filter in-line with the Air Outlet Valve (8) of the Air Compressor. (See Figure A)



PRODUCT FEATURES



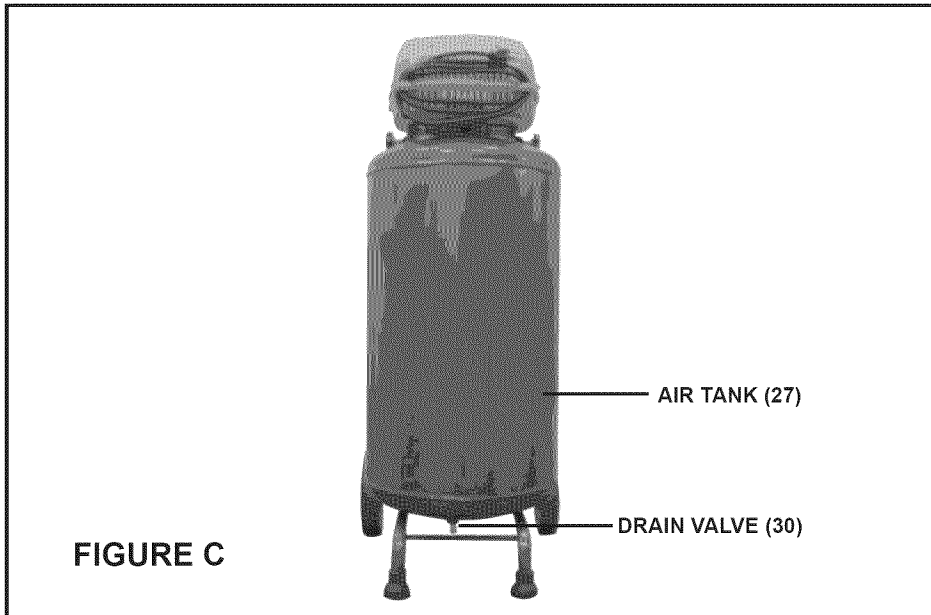
OPERATING INSTRUCTIONS



Read the **ENTIRE IMPORTANT SAFETY INFORMATION** section at the beginning of this manual including all text under subheadings therein before set up or use of this product.

GENERAL OPERATING INSTRUCTIONS

1. Pull on the Safety Valve (18) to make sure it moves freely. **(See Figure B, previous page)**
2. Check to make sure the Air Tank's Drain Valve (30), located at the bottom of the Air Tank (27), is fully closed. **(See Figure C)**



3. If the recommended water filter/regulator/oiler setup is implemented. **(Figure A)** Connect the air hose (not included) to the oiler outlet. Then connect the other end of the air hose to the pneumatic tool (not included) being used. **(See Figure B)**
4. Plug the Power Cord (16) into the nearest 120 volt, grounded, electrical outlet.
5. Turn the Power Switch (2) to its "ON" position to start the unit. **(See Figure B)**
6. When the Tank Air Pressure Gauge (20) reaches at least **125 PSI**, turn the air Regulator (17) clockwise or counterclockwise to allow the proper amount of air flow to reach the pneumatic tool being used. **(See Figure B)**
7. **NOTE:** The Regulator adjusts as follows:
 - **Clockwise** to increase tool air pressure.
 - **Counterclockwise** to decrease tool air pressure.
8. **IMPORTANT:** When the maximum air pressure, **155 PSI**, is reached as indicated by the Tank Air Pressure Gauge (20), the Motor will stop. The Air Compressor will automatically restart when the air pressure drops below **125 PSI**.
9. **IMPORTANT:** The internal overload protection mechanism will automatically shut off the Motor if the Motor becomes too hot. In this case, turn the Power

Switch to its “OFF” position. Wait until the Motor cools. Press the Overload Protector (3) button. Then restart the Air Compressor.

10. To stop the Air Compressor, turn the Power Switch (2) to its “OFF” position. Then unplug the Compressor from its electrical outlet. **(See Figure B)**
11. Pull the Safety Valve (18) to release any remaining air pressure from the Air Tank (27). Next, squeeze the trigger on the pneumatic tool to release any remaining air pressure from the tool. Then, disconnect the air hose from the Air Outlet Valve (8). **(See Figure B)**
12. Remove any moisture from the Air Tank (17) by opening the Drain Valve (30). Then, retighten the Drain Valve. **(See Figure B)**
13. Allow the Air Compressor to completely cool. Then store the Compressor in a clean, dry, safe location out of reach of children and other unauthorized people.

MAINTENANCE AND SERVICING

▲WARNING

Risk of serious personal injury from accidental starting or electric shock. Turn the Power Switch of the tool to its “OFF” position and unplug the tool from its electrical outlet before performing any inspection, maintenance, or cleaning procedures.

Damaged equipment can fail, causing serious personal injury. Do not use damaged equipment. If abnormal noise or vibration occurs, have the problem corrected before further use.

Inspection, Maintenance, And Cleaning

1. **BEFORE EACH USE**, inspect the general condition of the Air Compressor. Check for loose screws, misalignment or binding of moving parts, cracked or broken parts, damaged electrical wiring, and any other condition that may affect its safe operation.
2. **AFTER EACH USE**, remove any moisture from the Air Tank (27) by opening the Drain Valve (30). Then, retighten the Drain Valve. **(See Figure B)**
3. **AFTER EACH USE**, clean the external surfaces of the Air Compressor with a clean, moist cloth. Then dry. Do not use solvents. Do not introduce water into the electrical components of the Air Compressor.
4. **WARNING!** If the supply cord of this power tool is damaged, it must be replaced only by a qualified service technician.
5. **CAUTION!** All maintenance, service, and repairs not mentioned in this manual must only be performed by a qualified service technician.

TROUBLESHOOTING

Problem	Possible Causes	Probable Solutions
Air Compressor will not start.	<ol style="list-style-type: none"> 1. No power at outlet. 2. Cord not connected. 3. Air Tank maximum air pressure of 155 PSI has been reached. Compressor Motor will automatically shut-off. 	<ol style="list-style-type: none"> 1. Check power at outlet. 2. Check that cord is plugged in. 3. Wait until Air Tank air pressure falls to 125 PSI. Compressor Motor will then automatically turn on.
Low air pressure to pneumatic tool.	<ol style="list-style-type: none"> 1. Compressor Regulator not properly adjusted. 	<ol style="list-style-type: none"> 1. Turn Regulator clockwise to increase air flow to pneumatic tool.
Air pressure too high to pneumatic tool.	<ol style="list-style-type: none"> 1. Compressor Regulator not properly adjusted. 	<ol style="list-style-type: none"> 1. Turn Regulator counterclockwise to decrease air flow to pneumatic tool.
Power Switch not operating properly.	<ol style="list-style-type: none"> 1. Damaged Power Switch. 	<ol style="list-style-type: none"> 1. Immediately disconnect Power Cord from its electrical outlet. Do not use Compressor until a qualified service technician repairs Power Switch.

PLEASE READ THE FOLLOWING CAREFULLY

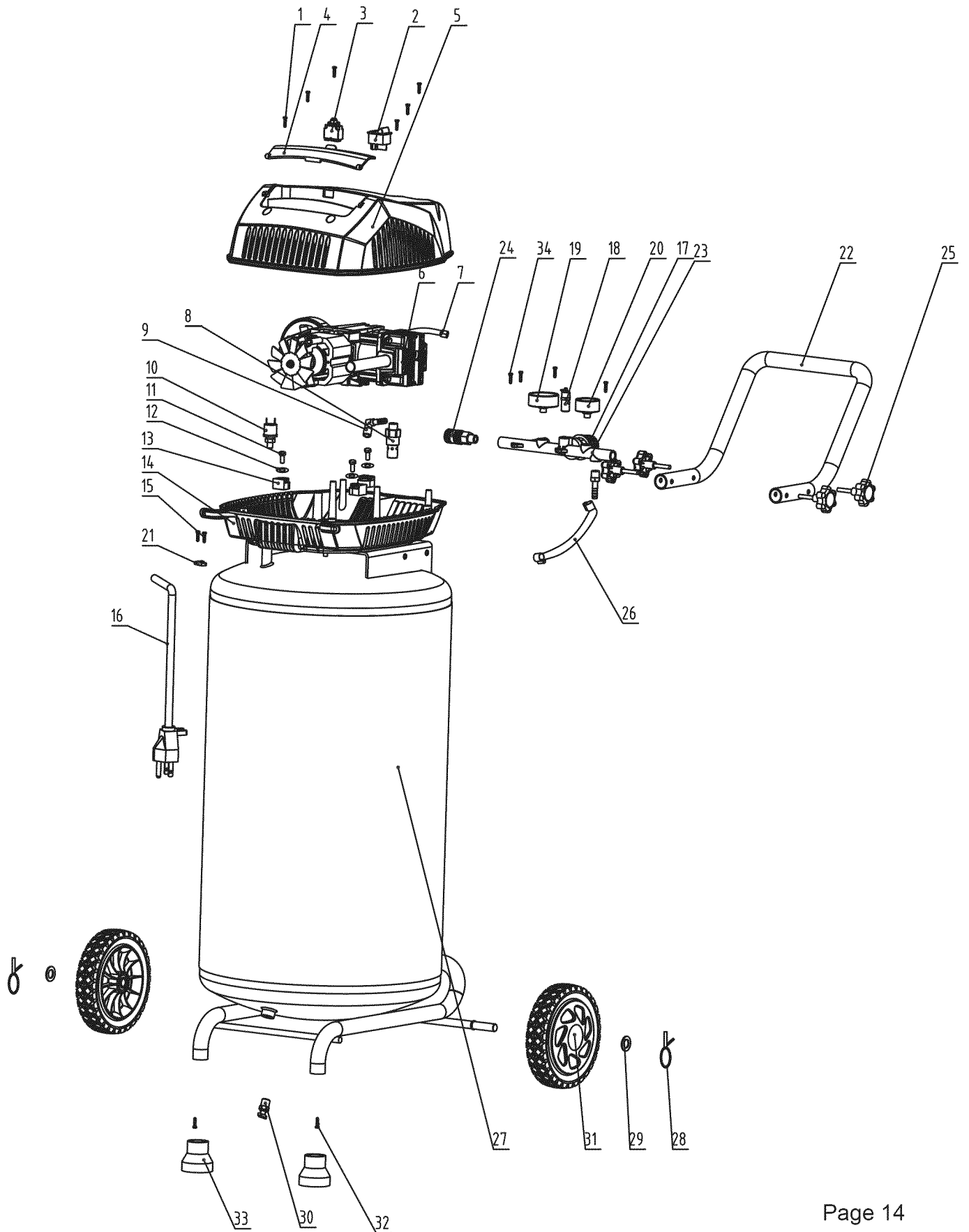
THE MANUFACTURER AND/OR DISTRIBUTOR HAS PROVIDED THE PARTS LIST AND ASSEMBLY DIAGRAM IN THIS MANUAL AS A REFERENCE TOOL ONLY. NEITHER THE MANUFACTURER OR DISTRIBUTOR MAKES ANY REPRESENTATION OR WARRANTY OF ANY KIND TO THE BUYER THAT HE OR SHE IS QUALIFIED TO MAKE ANY REPAIRS TO THE PRODUCT, OR THAT HE OR SHE IS QUALIFIED TO REPLACE ANY PARTS OF THE PRODUCT. IN FACT, THE MANUFACTURER AND/OR DISTRIBUTOR EXPRESSLY STATES THAT ALL REPAIRS AND PARTS REPLACEMENTS SHOULD BE UNDERTAKEN BY CERTIFIED AND LICENSED TECHNICIANS, AND NOT BY THE BUYER. THE BUYER ASSUMES ALL RISK AND LIABILITY ARISING OUT OF HIS OR HER REPAIRS TO THE ORIGINAL PRODUCT OR REPLACEMENT PARTS THERETO, OR ARISING OUT OF HIS OR HER INSTALLATION OF REPLACEMENT PARTS THERETO.

PARTS LIST

Part	No.	Description	Q'ty
1	3220404	Screw	6
2	3630283-1	Power Switch	1
3	3630183-1	Overload Protector	1
4	3410483	Tool Box Cover	1
5	3410183-2	Upper Cover	1
6	3110551	Motor Assy	1
7	3390183-1	Steel Wire Tube	1
8	3190551-1	Air Outlet Valve	1
9	3790651-2	Copper Tube	1
10	3630383	Pressure Controller	2
11	3221951-1	Screw	3
12	3290806	Washer	3
13	3420251-2	Bracket Support	3
14	3410283	Cover (Bottom)	1
15	3220106	Screw	2
16	3640183	Power Cord	1
17	31103119	Regulator turncap	1
18	3390853	Safety Valve	1

Part	No.	Description	Q'ty
19	3290283-1	Output Air Pressure Gauge	1
20	3290183-1	Tank Air Pressure Gauge	1
21	3411535	Wire clip	1
22	3330283	Handle	1
23	3110283-1	Pressure Valve	1
24	3321175	Quick Connector	1
25	3110282-1	Screw	4
26	3390183-8	Tube	1
27	3330119	Air Tank	1
28	3290135	Split Pin	2
29	3290235	Washer	2
30	3290275	Drain Valve	1
31	3420139	Wheel	2
32	3220250	Screw	2
33	3420183	Rubber Foot	2
34	3220101	Screw	4

ASSEMBLY DIAGRAM



WARRANTY

For TWO YEARS from the date of purchase within USA **SEARS** will, at its option, repair or replace for the original purchaser, free or charge, any part or parts found to be defective in material or workmanship.

This warranty does not cover:

1. Any part that has become inoperative due to misuse, commercial use, abuse, neglect, accident, improper maintenance, or alteration; or
2. The unit, if it has not been operated and/or maintained in accordance with the owner's manual; or
3. Normal wear, except as noted below;
4. Routine maintenance items such as lubricants, blade sharpening;
5. Normal deterioration of the exterior finish due to use or exposure.

Full One Hundred Twenty Days Warranty on Normal Wear Parts: Normal wear parts are defined as blade adaptors, blades, grass bags and tires. These parts are warranted to the original purchaser to be free from defects in material and workmanship for a period of one hundred twenty (120) days from the date of retail purchase.

How to Obtain Service: Warranty service is available by calling the toll-free helpline, at 1-888-266-7096. The factory will not accept the return of a complete unit unless prior written permission has been extended by **SEARS**.

Transportation Charges: Transportation charges for the movement of any power equipment unit or attachment are the responsibility of the purchaser. The purchaser must pay transportation charges for any part submitted for replacement under this warranty unless such return is requested in writing by **SEARS**.

Other Warranties: All other warranties, express or implied, including any implied warranty of merchantability is limited in its duration to that set forth in this express limited warranty. The provisions as set forth in this warranty provide the sole and exclusive remedy of obligations arising from the sale of its products.

SEARS will not be liable for incidental or consequential loss or damage.